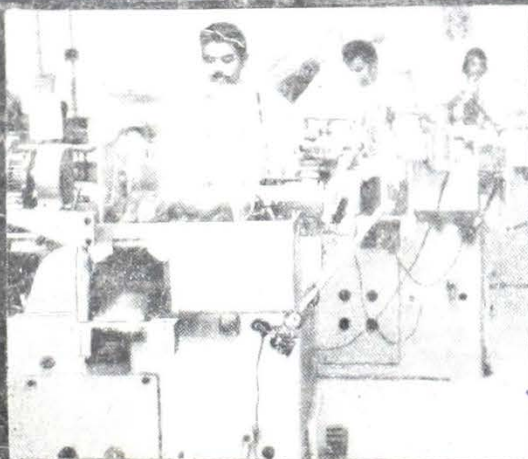
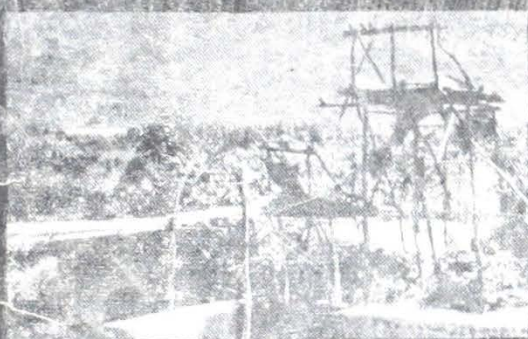


REPORT ON
ORGANISATION OF ADMINISTRATIVE
AND FINANCIAL STRUCTURE FOR
BACKWARD AREA DEVELOPMENT



NATIONAL COMMITTEE
ON
THE DEVELOPMENT OF BACKWARD AREAS

SEPTEMBER, 1980



X:75.2.3(Y:42).N8t
M1-
196241



**REPORT ON
ORGANISATION OF ADMINISTRATIVE AND
FINANCIAL STRUCTURE FOR BACKWARD AREAS
DEVELOPMENT**

**NATIONAL COMMITTEE
ON
THE DEVELOPMENT OF BACKWARD AREAS**

**PLANNING COMMISSION
GOVERNMENT OF INDIA
NEW DELHI
September, 1980**

NATIONAL COMMITTEE ON THE DEVELOPMENT OF BACKWARD AREAS
REPORT ON
ORGANISATION OF ADMINISTRATIVE AND FINANCIAL STRUCTURE
FOR BACKWARD AREA DEVELOPMENT

CONTENTS

| | PAGES |
|---|--------------|
| Summary of Recommendations | (i) to (iii) |
| 1. Introduction | 1 to 3 |
| 2. Concept and approach towards development of backward areas | 4 to 7 |
| 3. Planning processes and decentralisation of planning | 8 to 13 |
| 4. Methodology of Central and State plan allocations | 14 to 16 |
| 5. Identification of beneficiaries | 17 to 18 |
| 6. Organisational set-up for planning and implementation | 19 to 30 |
| 7. Personnel policies | 31 to 34 |
| 8. Financing and budgetary control | 35 to 40 |
| 9. People's participation and promotion of voluntary organisation | 41 to 46 |
| 10. Acknowledgements | 47 |
| Appendices | |
| I. Terms of reference of the Working Group on Organisational Structures | 48 |
| II. Number of meeting held by the Working Group | 49 |
| III. Question naire sent to the State Governments. | 50 to 53 |
| IV. Checklist of points for discussion with the State Governments at the Block level, District level and of focal points. | 54 to 55 |
| V. Composition of the Sub-Group on methodology of Central and State Plan allocations for backward areas, budget provision and financial control and its terms of reference. | 56 |
| VI. Report of the Sub-Group on the methodology of plan allocation, budget provision and financial control. | 57 to 60 |
| VII. Copies of the draft papers sent to State Governments and concerned Central Ministries on : | 61 to 74 |
| (i) integrated Structure of planning and implementation of a comprehensive integrated area development programme in backward areas at Block, District and State levels: | 61 to 64 |
| (ii) administrative structures, manpower requirements, delegation of powers, incentives and training of Staff in backward areas; and | 65 to 70 |
| (iii) methodology of Central and State plan allocations for the backward areas, budget provisions and financial control. | 71 to 74 |
| VIII. Summaries of comments received from some State Governments on the above papers. | 75 |
| IX. Summary of the Study of Development Administration in Kerala State—February, 1980. | 76 to 79 |