

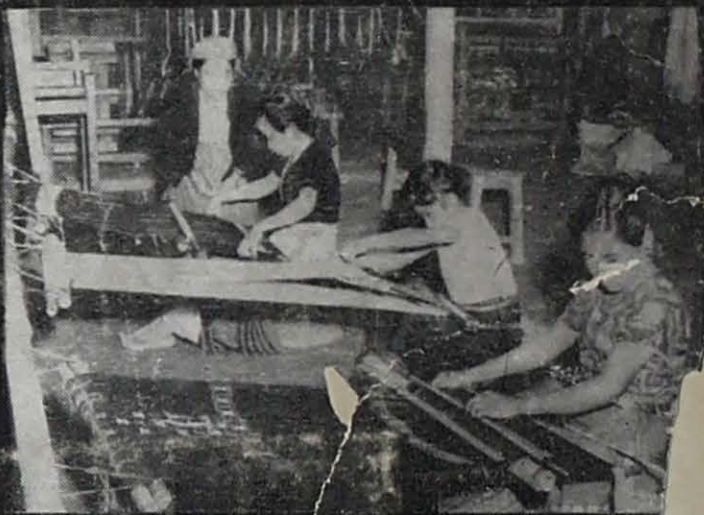
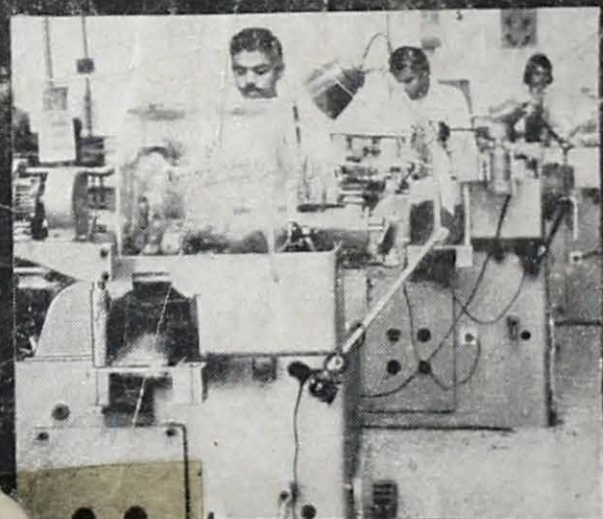
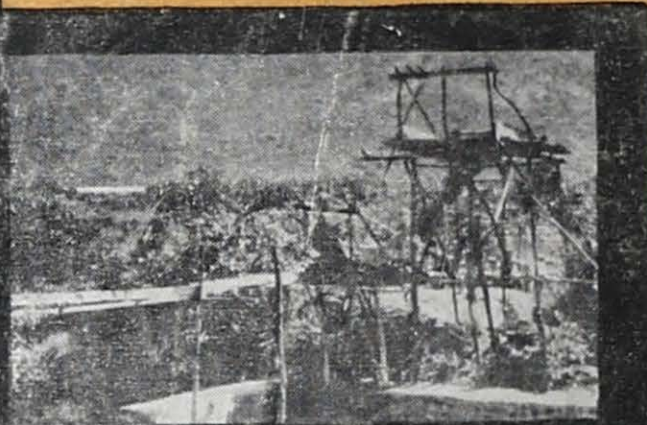
REPORT ON

DEVELOPMENT OF NORTH EASTERN REGION



NATIONAL COMMITTEE
ON
THE DEVELOPMENT OF BACKWARD AREAS

NOVEMBER, 1981



X:75.2.3(Y:42).N8t
M1.8
198599



**REPORT ON DEVELOPMENT
OF
NORTH-EASTERN REGION**

**NATIONAL COMMITTEE
ON
THE DEVELOPMENT OF BACKWARD AREAS**

**PLANNING COMMISSION : GOVERNMENT OF INDIA
NEW DELHI**

November, 1981

REPORT ON DEVELOPMENT OF NORTH EASTERN REGION

CONTENTS

Sl. No.		PAGE
	Summary of Conclusions and Recommendations	iii
1	Introduction	1
2	Characteristic Features of the Region	3
3	Strategy of Development	11
4	Administrative Structure	17
5	Jhum Cultivation	20
6	Horticulture	30
7	Plantations	35
8	Forestry	39
9	Animal Husbandry	43
10	Handlooms and Sericulture	48
11	Industry and Minerals	60
12	Transport and Power	64
ANNEXURES		
CHAPTER 2		
	ANNEXURE 2·1 Decadal variation in Population	10
	ANNEXURE 2·2 Mineral Resources in the North East	10
CHAPTER 6		
	ANNEXURE 6·1 Area and Production—Fruit-crops	34
	ANNEXURE 6·2 Area & Production—Vegetable Crops	34
CHAPTER 9		
	ANNEXURE 9·1 Livestock and Poultry	46
	ANNEXURE 9·2 Veterinary Health and Farms (as on 1977-78)	47
	ANNEXURE 9·3 Production of Livestock Products	47
CHAPTER 10		
	ANNEXURE 10·1 A note on the Development of Oak Tasar Industry in Manipur	54
	ANNEXURE 10·2 Contribution of Regional Tasar Research Station, Imphal in the Development of Oak Tasar in the North-Eastern Region(1972 to 1980-81)	54
	ANNEXURE 10·3 Present Position of Oak Tasar Industry in the North Eastern States	59
CHAPTER 11		
	ANNEXURE 11·1 Medium and Large scale Industries in North-Eastern Region	63
	ANNEXURE 11·2 Distribution of Small Scale Industries, 1971	63
CHAPTER 12		
	ANNEXURE 12·1 Total Motorable Road Length (as on 31-3-1979)	67