

FOR OFFICIAL USE ONLY

SOCIO ECONOMIC REVIEW
AND
DISTRICT STATISTICAL ABSTRACT
OF
GREATER BOMBAY DISTRICT

1975 - 76 & 1976 - 77

DIRECTORATE OF ECONOMICS & STATISTICS
GOVERNMENT OF MAHARASHTRA
BOMBAY

STATISTICAL ABSTRACT OF GREATER BOMBAY

FOR THE YEARS
1975-76 & 1976-77

DISTRICT

Sr. No.	Subject	Page No.
1	2	3
(1)	<u>AREA AND POPULATION:</u>	
1.	Wardwise Area, Houses and Population 1971 Census	1
2.	Decadal Variation in Population since 1901 to 1971 census	3
3.	Ward-wise Sections 1971 Census	4
4.	Wardwise Sex ratio and percentage of literacy 1971 census	8
5.	Number of workers and Non-workers in each Ward 1971 Census.	9
6.	Scheduled Castes, Scheduled Tribes & Buddhists according to 1971 Census.	10
7.	Distribution of population according to (A) Age Group (B) Religion and (C) Language Group as per 1971 Census.	11
8.	Slums and slum population during 1975-76.	13
(2)	<u>CLIMATE</u>	
9.	Monthwise rainfall at selected centres during the year 1975-76.	15
10.	Maximum and Minimum Monthly temperature of selected Centres during the year 1975-76.	17
(3)	<u>AGRICULTURE</u>	
11.	Land utilisation during the year 1972-73.	19
12.	Area and outturn of principal crops during 1972-73	20
13.	Area irrigated under different crops during 1972-73 and 1973-74	21
(4)	<u>ANIMAL HUSBANDRY, FORESTS AND FISHERIES.</u>	
14.	Live stock (As per 1972 Live stock census)	22
15.	Veterinary statistics during 1975-76 and 1976-77	23
16.	Miscellaneous statistics regarding Milk supply	24
17.	Miscellaneous statistics relating to fisheries	26
(5)	<u>EMPLOYMENT, INDUSTRY, MINING AND ELECTRICITY:</u>	
18.	Average daily employment of workers in factories	27
19.	Industrywise distribution of working factories according to working strength for the year -1975	46
20.	Distribution of factories according to No. of days worked. for the year 1975.	51

1	2	3
2	21. Important characteristics of Industries during 1975-76 and 1976-77	55 to 70
	22. Employment Exchange Statistics during the year 1975-76 and 1976-77	71
	23. Occupational distribution of placements in Employment Exchanges during the years 1975-76 & 1976-77.	72
	24. Employment in Different Industries during 1975-76	73
	25. Employment in different Industries during the year 1976-77.	74
	26. Consumption of Electricity during the years 1975-76 & 1976-77	75
(6)	<u>CO-OPERATION:</u>	
	27. Statement relating to Co-operative Societies during the year 1976-77.	77
	28. Statement regarding Consumers Co-operative Societies in urban areas during 1975-76.	80
	29. Number of registered Money lenders and Loans advanced by them during 1975-76.	81
(7)	<u>MEDICAL AND PUBLIC HEALTH:</u>	
	30. Medical facilities available in Government Hospitals during the years 1975-76 and 1976-77.	82
	31. No. of Births and Deaths registered during the year 1975 and 1976.	83
	32. No. of Deaths due to important causes during the year 1975 & 1976.	84
	33. Family Planning Centres operations during 1975-76 and 1976-77	85
(8)	<u>EDUCATION:</u>	
	34. Distribution of pupils by standard (In pre-primary Primary & Secondary Schools) for the year 1975-76 and 1976-77.	86
	35. Distribution of pupils in Primary and Secondary Schools according to Medium of instructions for the year 1975-76.	87
	37. Number of Back-ward class beneficiaries (Students) during 1975-76.	89
	38. Backward Class concessions for free education during the years 1975-76 and 1976-77.	90
	39. No. of Institutions, Pupils and Teachers during the year 1976-77.	91
(9)	<u>TRANSPORT AND COMMUNICATION :</u>	
	40. Length of Railway Routes during 1975-76 & 1976-77.	92
	41. Road length according to category and surface classification during 1975-76.	93

1	2	3
42. No. of Motor Vehicles in Operation during the year 1975 & 1976.		95
43. Operational Statistics of BEST Buses during 1975-76 and 1976-77.		96
44. Operation of Maharashtra State Road Transport Co-operation during the years 1975-76 & 1976-77		98
45. ----- deleted -----		
(10) LOCAL BODIES :		
46. Income and Expenditure of Bombay Municipal Corporation.		99
(11) PLAN		
47. District Annual Plan Expenditure under different developmental Heads in respect of district Level schemes during 1974-75 to 1976-77		101
(12) PRICES AND INDEX NUMBERS:		
48. Wholesale average prices of certain Agricultural Commodities in various markets in the Bombay.		102
49. Average Retail Prices of important commodities during 1975-76.		103 to 108
50. Consumer price index numbers (Revised Series) for working class, during 1975-76 & 1976-77. Centre - Bombay.		109
(13) JUDICIAL AND ADMINISTRATION:		
51. Strength of police (excluding C.I.D. staff & Railway Police Staff) for the year 1976.		110
52. Crime Statistics during the year 1976 and 1977		114 and 115
53. No. of cases disposed of in Civil and Criminal courts during the years 1975 and 1976		116
54. Cinema Statistics during 1975-76 and 1976-77.		117
(14) BANKING AND INSURANCE:		
55. No. of Banking Offices as on 30th June of 1976 and 1977		118
56. No. of Joint Stock Companies as on 31st March of 1976 - 1977.		120
57. No. of Life Insurance Policies issues and amount incurred during 1975-76 & 1976-77		119
(15) MISCELLANEOUS:		
58. Collection of Small Savings during 1975-76 & 1976-77.		121
59. Land Revenue collection during 1975-76 & 1976-77		122
60. No. of printing presses, news papers and periodicals published as at the end of 1975-76 and 1976-77.		123

(P.T.O.)

1. Land Utilisation - 1976-77
2. Plan Expenditure under different heads 1976-77
3. Growth of Co-operation 1975-76
&
1976-77
4. Education (Institutions and Enrolment) 1975-76
&
1976-77
5. Consumer Price Index Nos. for working class 1971 to 1976

-----X-----

SOCIO ECONOMIC REVIEW

OF

GREATER BOMBAY DISTRICT

1975-76 & 1976-77

PART - I

CONTENTS

<u>CHAPTER NO.</u>	<u>SUBJECT</u>	<u>PAGE NO.</u>
I	INTRODUCTION	1
II	EXPLANATORY NOTE	14

CHAPTER - I

Introduction :

Greater Bombay District :

Location :- The City of Bombay, the Capital of Maharashtra and the principal sea and air-port of Western India is one of a group of islands lying off the coast of northern konkan at 18'-15' N and 72'-54' E. Bombay island originally comprised of a group of seven islands which by means of connecting causeways and break waters to shut out the sea have been converted into a promonatory of solid land, measuring about 3 miles in width at the northern end and narrowing to a point of rock at Colaba, its southern extremity. It is united at the northern limits with the salsette Island by means of causeways and railway embankments. The island of Bombay alongwith its suburbs extend from Colaba point in the South upto Dahisar on the north west side and Mulund on the north East side. Gr. Bombay District conversan area of 603 S. Km. and contents XX of population of 5970515 as per 1971 census.

Physical features and topography :

2. Greater Bombay comprises of the island of Bombay, Trombay and major part of Salsette. In the north the island of Salsette is separated from the main land by the waters of Bassein creek. Similarly the Harbour Waters in the east, stand between the mainland and the islands of Bombay, Trombay and Salsette. The waters of the Arabian Sea wash the western and the southern margins.

3. The Bandra creek in the south of Salsette separates it from the island of Bombay. Its Western margin is further indented by Manori and Malad Creeks.

The densely forested hills in Salsette and Trombay together with Tulsi, Vihar and Powai lakes, the Harbour waters to the east and an open sea in the West all make a picturesque landscape of the Country.

4. The island of Bombay was formed of seven separate islands. They were subsequently joined to form one single unit. The island is flanked on either side - east and west - by two longitudinal ridges running in north-south direction. The intervening area is occupied by flats and low lands on which the city of Bombay has mainly developed. The Western ridge is a continuous chain. The Eastern ridge is made up of a broken chain of separate hills. The western as well as the eastern ridges have easterly scraps and dipslope to the west.

5. The two crescent shaped bays - the Back-bay and the Mahim Bay occur to the south and to the north of the island respectively. In each case the formation of the bay may be attributed to an exclusive erosion of the less resistant deposits of ash intercalated between two hard and highly resistant lava flows. The two highly resistant lava beds culminate in head lands or points known as the Colaba point and Malbar point. Similar geological conditions have contributed towards the formation of Mahim Bay where the soft ash material of the Worli fort has been carved out inland to a very great extent.

6. In the island of Salsette the life is quite bold with a cluster of hills almost in a north-south trend running close to the eastern margin. This knot of hills attains a maximum elevation in the north near about the Kanheri caves and then gradually tapers down

towards south. A north-south ridge also flanks the western margin.

7. In comparison to the above two islands, the island of Trombay presents quite a different topography of central high lands rimmed by flat plans forming the periphery. It is separated from the island of Bombay by mud flats and creek waters.

Geological setting :

8. The rock formations exposed in and around Bombay have come to be known in Indian Geology as the Deccan traps.

9. The rocks of Bombay, Trombay and Salsette are of volcanic origin and mostly crystalline in nature. The rock is black to greenish black in colour and is hard and compact with crystalline character.

10. Though all the rocks in these islands are of volcanic origin in the main some parts particularly in the islands of Bombay and Salsette have exposed rocks of stratified character partly formed of volcanic ejecta and partly of sediments.

11. Geologically the island is made up of two lava flows separated by an intertrapean or sedimentary bed which represents a period of repose when the lavas ceased to erupt. Its exposed thickness is about 70 feet and more.

12. The top lava flow is of basaltic composition. It is hard and is traversed by horizontal and vertical joints giving rise to huge cuboidal blocks. The rock is lithoidal in structure and reveals a splintary conchoidal fracture on breaking.

13. The underlying intertrappean sedimentary bed is comparatively much softer than the basalt.

Climate :

14. The climate of Bombay could be described as fairly equable where seasonal fluctuations of temperature are not significantly large. The tempering effects of the proximity of sea and the presence of aqueous vapour in the atmosphere has restricted the variety to within bearable limits.

15. The seasonal variation of temperature flows closely the course of the sun and varies with its zenith distance. January is the coldest month of the year and the warmest being the month of May.

16. The prevailing direction of the normal seasonal wind during the year is west-north-west, the oscillation of which about the mean position swerves to the north-west-east in December in one direction and in June to the south-west on the other, there is little fluctuation in the velocity during the dry season. During the wet season the velocity gradually increases reaching its peak in the month of July.

Seasons :

17. The year in Bombay may be divided into four seasons each extending roughly a period of three months, viz.

Cold Season	: December to February
Summer season	: March to May
Monsoon season	: June to Sept.
Post Monsoon	: Oct. to Nov.

Rainfall :

18. Monsoon season extends from June to Sept. The South West Monsoons burst in Bombay by the end of September. The wettest month is July with a normal rainfall of 827 m.m.

Area :

19. The present area known as Gr. Bombay came into existence in February 57 with the extension of the limits of the then Gr. Bombay upto Dahisar on the Western Railway and upto Mulund on the Central Railway side. Until 1950 the island of Bombay separated from the rest of the salsettee by the Mahim circle, was the limit of Bombay Municipal Corporation's jurisdiction. Bandra, Khar, Santacruz and Andheri etc. along the Central Railway corridor existed as independent urban entities having their own municipalities.

20. The docks and harbour together cover an area of about 180 hectares. Land in occupation of both the Central and Western Railways cut through out the length of Gr. Bombay on the eastern and western flanks including the Bombay Port Trust Railway comprises of 265.27 hectares in the city. The land in occupation of defence services is roughly 241.08 hectares.

21. The total area of low lying land in the city is 657.44 hectares which also including the low lying lands of the eastern and western coastline. The suburban and the other land comprise of vast areas of low lying land covering an area of 24 sq. miles.

Population :

22. Bombay City has a population of 59.70 lakh

person according to the 1971 census comprising of 34.70 lakh Males and 24.92 lakh females. The sex ratio works out at 816 females per 1000 males. This is due to the fact that many male persons came to Bombay in search of work leaving their females in the district or other states.

23. The density of population per sq.km. in Gr. Bombay is 9,901 per km. (it being 44686 persons per sq. km. in Bombay City and 7860 in the suburbs). Most congested ward in the city is 'C' Ward with a density of 1,75,546 persons per Sq. Km.

24. The Literacy percentage in Bombay city is 63.84. The literacy percentage amongst the male population is 69.65 percent and 55.72 percent amongst female population.

25. The scheduled caste population in Bombay City is 3.53 percent and the scheduled tribe population is 0.5 percent.

26. Out of the total population 36.8 per-cent are actually working in some occupation or the other. Percentage of male workers to total male population is 57.66 percent and female workers to total female population is 7.7%.

Decadal Variation :-

27. The rate of population growth in Gr. Bombay was rather low in the decades prior to 1941. The erratic and low growths in the earlier decades could be due to sporadic epidemics and high death rates and varying migration flows. In the recent periods migration flows have been substantial.

28. The growth rates in the constituent units

have been irregular. Whereas upto 1931 the city proper determined the growth of the population, after 1931 the suburbs and the extended suburbs with their added populations have determined the population growth in the Gr. Bombay district. It seems that the city proper has reached its peak point in attracting migrants whereas the extended suburbs with its sprawling areas has open spaces for ever increasing number of migrants. During the last three decades the population has shown a growth rate of 66.23, 38.66 and 43.80 percent.

29. The sex ratio (female per 1000 males) of the population in Gr. Bombay was 652, 570, 561, 592, 616, 663 and 716 respectively.

Land Use :

30. There is a heavy concentration of commercial activity in the southern part of the city spread over an area from Museum to Princes Street. Commercial activity is also wide spread in the precincts of Kalbadevi, Bhuleshwar, Opera House. But the Central Part of Bombay is largely a zone of mixed users comprising of residential and commercial users interspersed with several industrial users such as small workshops and godowns.

31. Major industrial activity of the city is located in the vicinity of Dock area. Textile Mills are concentrated within the core of Central Bombay.

32. Development in the suburban areas conforms to the ribbon type of development along the two major roads, viz. Bombay Agra Road and Swami Vivekanand Road. Commercial establishments of the suburban areas are

local in character and have cropped up according to the needs of the locality. In the eastern suburbs, some of the major industrial undertakings are located in areas of Trombay, Ghatkopar, Vikhrali, Dhandup and Mulund. Larger industrial concentrations in Western suburbs are in Jogeshwari, Goregaon and Borivali areas.

District Administration :

33. Greater Bombay is the capital of Maharashtra State. It is a city as well as a district. It is for the revenue purposes and other relevant matters administered by the Collectorate under the supervision of Collector. For the revenue purposes the city is divided into 4 parts Kurla, Andheri, Borivali tahsil and City.

34. Bombay city is an urban area. It is for civic amenities purposes administered by the Bombay Municipal Corporation under the administration of the Municipal Commissioner. In order to facilitate latter administrative control it has been further divided as Bombay City proper, Eastern suburbs and western suburbs. Each part is administered by the Deputy Municipal Commissioner in order to facilitate local control on civic amenities. The area is further divided into wards under the Central of ward officer.

35. The law and order situation in Gr. Bombay is looked after by the police department under the administrative control of Commissioner of Police.

36. Bombay City being the capital of Maharashtra the Mantralaya and most of the offices of the heads of departments are situated in Bombay.

Land Use :

37. Bombay City in the wake of its many sided

development is posed with a serious problems of traffic congestion. There is a concentration of activity in the extreme south with the bulk of its population residing in the northern areas.

38. Registration of vehicles indicates that its growth is increasing at faster rate than the growth of its population and industries.

39. Buses operated by the Bombay Electric Supply and Transport Undertaking provide excellent coverage of the entire Gr. Bombay. The undertaking has existing bus depots scattered in different parts of Gr. Bombay.

40. Rural Maharashtra is connected to Bombay City by means of State Transport Buses. Bombay is the head quarters of the state transport organisation.

Railways :

41. The railways constitute the most popular and the most effective means of mass transportation in Bombay. This is due to (1) the low cost which the railways offer for mass transportation (2) the time taken to travel from house to place of work is much shorter than by other means, Greater Bombay is served by both the Central Railway on the eastern flank and the Western Railway on the Western flank. Both these services penetrate into the core of Gr. Bombay with terminals at Churchgate and Victoria Terminus. The Western Railway line links Bombay with Gujarat, Rajasthan and North India and the Central Railway with the Central, Eastern and Southern parts of the country. The suburban railway traffic at present runs between Bombay-Virar along the Western Railway, Bombay to Titwala and Kasara on the North east and Ambarnath and Karjat on the South-east lin

42. Bombay has an international airport at Santacruz.

43. The Port of Bombay has been the most famous port on the west coast of India. Bombay is the largest port on the sea board of the country and caters to a very large volume of import and export trade. It is gifted with a natural deep water harbour. The deep waters in the Harbour provide a secure and ample shelter for shipping throughout the year.

Water Supply :

44. Portable water is essential for health and preservation of life. The earliest source of the city's water supply comprised of wells and tanks which were not free from pollution and the supply was dependent on vagaries of monsoon and was inadequate. This was therefore replaced by river scheme.

45. Bombay city is now supplied water from Vihar Lake, Tulsi Lake, Powai Lake, Wansa Lake, the Vaitarna river and Bhatsai river.

Electricity :

46. Bombay's main supply has been through the Tata groups of enterprises comprising the Tata Hydro Electric Power Supply Co. Ltd. The Andhra Valley Power Supply Co. Ltd. and the Tata Power Co. Ltd. The Thermal station at Trombay, the railway Thermal station at Thakurli. In addition Koyna power is also brought into the region and all this electricity is joined by Grid. The Atomic power from Tarapur has also started becoming available.

47. The distributing agencies are the B.E.S. & T. undertaking within the city limits. The Bombay Suburban Electric Supply Co. covering an area of the Western Suburbs and Southern part of the Eastern Suburbs and

the Thane Electric Supply Co. (Taken over by the M.S.E.B.) covering the northern area of Eastern suburbs. Major consumers like the Railways, Textile Mills and other industries in view of their huge load demand are supplied directly from the Tata Electric Supply,

Education :

48. Primary Education : It is a fundamental principle that all children should be given education suitable to their age, ability and aptitude.

49. The compulsory Primary Education Act extends the responsibility of the Local Authority towards all children of School Going age, except subnormal children for whom special education is required to be provided.

50. It is the obligatory duty of the Bombay Municipal Corporation to provide for primary education. It has to provide free and compulsory education for children of age group 6 to 11 years in the Gr. Bombay. Though the Act provides compulsory and free education upto IV standard only, the Corporation is also imparting instruction to standard V to X. Most of the schools are uncomfortably full owing to the rise in the number of students.

51. Primary Education is imparted through (i) Municipal Primary Schools, (ii) Private Primary Schools (aided) (iii) Private Primary School (unaided but recognised).

52. The media of instructions in majority of the schools in either Marathi, Gujarati, Urdu or Hindi. Besides these Kannada, Tamil, Telugu, Sindhi and English have been adopted as media of instruction wherever there is such a demand.

53. Bombay City's educational needs are supplemented by a number of secondary schools :- Some of these schools are run by the Bombay Municipal Corporation. But most of the middle and secondary schools are run by the private institutions. The average population served per secondary school was about 7500 students.

54. The educational standard in Bombay is far advanced than other centres in the country. It has therefore many colleges catering to the educational needs of the various faculties in education. Gr. Bombay has about 61 colleges and 21 other institutions. All the colleges in Bombay City are controlled by the Bombay University.

55. Apart from the colleges and other institutions there are nearly 148 commercial schools, 23 technical high-schools, 7 poly-technics institutions and 10 Diploma institutions. The Technical Education is also dealt in the Indian Institute of Technology at Powai.

Health :

56. Within the limits of Gr. Bombay, the State Govt. also supplements the efforts of the Corporation in maintaining several Government Hospitals (partially subsidised by the Corporation). The Employees State Insurance Corporation has also began to play a vital role in rendering medical assistance. Govt. and semi Govt institutions like the Railways and the Bombay Port Trust have established medical facilities for their employees. There are 53 Govt. and Municipal hospitals in Gr. Bombay including Ayurvedic Hospitals. In addition to these there are 88 private aided and non-aided hospitals.

There are 87 public dispensaries in Gr. Bombay. The relatively small number of public dispensaries must be seen against the availability of a very large number of private dispensaries.

Milk Supply :

57. There were a number of stables in Bombay during 1950-60. But the Bombay Municipal Corporation decided to abolish these stables for health purposes.

58. Gr. Bombay consumes around 400 million litres of fresh milk per year. This is obtained from ~~Aarey Milk~~ Colony, Worli Milk Colony, from Gujarat and from other rural areas of Maharashtra. Even at present the milk demand is more than supply and this will rise progressively with increase in per capita income and increase in population. The milk supply is stretched at present by converting part of the fresh milk into toned milk prepared with the help of imported milk powder.

Explanatory Note :

The data on various important sectors of the economy are presented in this abstract for the years 1975-76 and 1976-77. Wherever data for the years 1975-76 and or 1976-77 is not available, the data for the latest available year is presented. In the case of population, the data is reproduced from the 1971 population Census and that for Live-stock from the 1972 Live stock census. The data on agriculture relates to the agricultural year (July to June). All the data are collected from the State and Central Govt. offices, local bodies, and other relevant agencies. The foot notes below each table indicate the sources from which the data have been collected.

II. District at a glance :

This table presents a birds eye-view of the socio-economic indicators of development in Gr. Bombay District and in Maharashtra State under different heads, such as area, population, agriculture, animal husbandry, education, transport and communication, plan expenditure, local bodies and other miscellaneous statistics. Reference year of the data is also indicated in the table.

III. District Statistical Abstract :

The data incorporated in the District Statistical Abstract have been classified and presented in 14 groups. The concepts of the terms used in the tables and the scope and limitations of the data presented under each group are explained below :

I. Area and Population :

In all 8 tables are grouped under this section Data for 1971 population Census for the district as a whole

as made available from the Primary Census Abstract of 1971, is incorporated in the tables. Table 1 indicates area, population density, No. of occupied residential houses, No. of households and sexwise population as per 1971 census. The data has been presented for every ward in Bombay City and the suburbs.

Table 2 shows decadal variations in population since 1901 to 1971.

Table 3 gives ward-wise sections in Gr. Bombay, as per 1971 census Gr. Bombay City & Suburbs are divided in 88 sections for administrative purposes. The composition of different wards by sections is presented in this table.

Table 4 gives ward-wise sex ratios and percentage of literacy.

Table 5 gives ward-wise distribution of population according to nine-fold classification alongwith total number of non-workers. For this purpose necessary particulars were recorded in respect of each individual person and the entire population was first classified into (i) workers and (ii) non-workers. A worker is defined as a person whose main activity is participation in any economically productive work through his physical or mental activity. Work involves not only actual work but effective supervision and direction of work. In the case of regular work in trade, profession, service or business a person was considered as a worker, if he had participated in such regular work on only one of the days during the week preceeding the date of enumeration and that work has been returned as his main activity. A person who is engaged primarily in household duties such as cooking for ones own household or performing one's own household duties or a boy or a girl who is primarily a student attending an

institution, even if such a person helps the family's economic activity but not as a full time worker was not treated as workers for the main activity. A person who merely receives income such as rent or pension and who does not have to work for receiving that income has not been treated as worker. Cultivators includes both owner-Cultivators and tenant-Cultivators. Agriculture labour covers all other persons working on land as labourers on eages without holding any right upon the land. Workers in live-stock, forestry, fishing, hunting plantation orchards and allied activities are included under Live-Stock orchards etc. Mining quarrying includes workers in mining and quarrying. This includes coal mining crude petroleum natural gas, metal ore, mining, stone quarrying and other type of mining, salt, chemicals, precious stones, mica, gypsum etc. Household industry includes workers in household industry. Household industry is defined as an industry conducted at home in urban areas or within the village in rural areas by the head of the household himself and/or mainly by the members of the household. A household industry is not run on the scale of a registered factory and relates to repairing or making of goods. Thus the main criteria for household industry are its smaller scale, its being run at home in urban areas and within the village in rural areas. Manufacturing other than household industry includes all types of production, processing, servicing or repairing of goods. This does not include production, processing etc, which may classified as household industry. Construction workers includes workers engaged in construction and maintenance of building, roads, railways, bridges, telegraph and telephone line, water-ways reserviors etc. category of workers under

trade and commerce includes workers engaged in any capacity in wholesale or retail trading activity and commercial transactions relating to imports and exports and real estate and properties, stocks and shares, insurance, money lending, banking etc. category of workers in transport storage and communication includes workers engaged in transport activities by air, rail, road and water and in services incidental to transport such as packing, carting loading, unloading etc. Workers engaged in storage, warehousing and communications services such as posts telegraphs, telephones, wireless, signaling information and broadcasting are also included in this. Category of workers under other services includes workers engaged in public utility services like electricity, gas or water supply and sanitary.

Table 6 shows scheduled castes, Scheduled Tribes and Buddhists population as per 1971 census.

Table 7 shows distribution of population according to (a) age group, (b) religion and (c) language as per 1971 census.

Table 8 presents No. of slums prevailing in different category of land and the population spread over them.

2. Climate :

Only two tables are included under this group. They pertain to rainfall and temperature.

Table 9 gives monthly rainfall, normal rainfall, number of rainy days in each month at two selected centres viz. Colaba and Santacruz. A day is treated as a rainy day if during the 24 hours the rain gauge recorded a minimum of 25 mm. of rainfall.

Table 10 indicates monthly "maximum" and "minimum"

temperature as recorded at the selected centres Colaba and Santacruz. The data are based on the information supplied by the Regional Metropolitan Centre, Bombay.

Agriculture :

Three tables are included under this group :

The total geographical area is shown according to different types of land used. The changes in the geographical area over years are mainly due to the progress of cadastral surveys. This district being a big city a very small part of land is used for agriculture purposes.

Allowances made for areas covered by water, buildings, roads, etc. are different in two cases. Under "Forests" are included all actually forested areas or lands classed or administered as forests under any legal enactment dealing with forests whether state-owned or private. If any portion of such land is not actually wooded but put to some agricultural use that portion is included under the appropriate heading of cultivated or uncultivated land. Land put to non-agricultural uses stands for all lands occupied by buildings, roads and railways or under water i.e. rivers and canals and other lands put to uses other than agricultural. Barren and unculturable land covers all barren and unculturable land like mountains deserts etc. Land which cannot be brought under cultivation unless at a high level cost, is classed as unculturable whether such land is in isolated blocks or within cultivated holdings. Permanent pastures and other

grazing lands cover all grazing lands whether they are permanent pastures and meadows or not. Village common and grazing lands within corest areas are included under this head. Under miscellaneous tree crops and groves not included in the net area sown is included all cultivable land which is not included under net area sown but is put to some agricultural use. Culturable waste includes all lands available for cultivation whether not taken up for cultivation or taken up for cultivation once but not cultivated during the current year and last five years or not in succession such lands may be either fallow or covered with shrubs and jungles which are not put to any use. They may be assessed or not assessed and may lie in isolated blocks or within cultivated holdings. Current fallows comprise cropped areas which are kept fallow during the current year. If any seeding area is not cropped again in the same year it is also treated as current fallow. Other fallow land includes all lands which were taken up for cultivation but are temporarily out of cultivation but are temporarily out of cultivation for a period of less than one year and more than five years.

The net area sown consists of net area sown with crops and orchard area sown more than once being counted only once. The gross cropped area represents the sum total area under all crops. The difference between the total cropped area and net area sown is accounted for by the area sown more than once on the same land during the same year with the same or different crops.

Table 11 indicates figures of land utilisation under the standard heads of land use for the year 1972-73. Table 12 shows, area and outturn of principal crops in Gr. Bombay during 1972-73. Which table 13 gives area irrigated under different crops in Gr. Bombay during 1972-73 and 1973-74.

Animal Husbandry, Dairy Development and Fisheries

This group includes four tables.

Table 14 gives number of livestock and poultry by categories as enumerated in the district, in the livestock census 1972. Quinquennial censuses are conducted throughout the country on the uniform basis of concepts and methods of enumeration. In the census all the livestock is enumerated by house to house enquiry. Particular care is taken to enumerate livestock in slaughter houses, stray animals and animals in transit.

Table 15 gives number of veterinary institutions aided by Govt. or municipal Corporation and no. of animals treated in hospitals.

Table 16 presents statistics on milk supply, e.g. No. of Govt. dairies, total capacity of the dairy plan, milk processed and distributed no. of milk cardholders, no. of milk booths, quantity of milk powder and of other items prepared and distributed

Table 17 shows statistics relating to fisheries, covering data on fishing pads, fishermen community, fisherman actually engaged in fishing trade, boats & mechanised boats, fish production, fishermen's Co-operative societies and their membership and fish handled by them.

Employment, Industry, Mining and Electricity :

Item - 5 :

Gross output represents value of products & by-products manufactured for sale, work done for customers and a sale value of goods sold in the same condition as purchased and is adjusted for the difference in stocks of semi-finished goods at the beginning and at the end of the survey year.

Value added by manufacture is computed by deducting from the gross pre-factory value of output the gross value of input value added is net of depreciation.

Eight tables are included under this group:

Factory statistics is given in Tables 18 to 20. Table 18 shows factories under different groups with average daily employment, mandays worked, no. of factories submitting returns and no. of registered factories. Table 19 indicates industry-wise distribution of working factories according to working strength and table 20 deals with distribution of factories according to no. of days worked during the year. The factory statistics shown in the tables cover following type of factories registered under Factories Act 1948 (i) those employing ten or more workers working with the aid of power section-2m(i)(ii) those employing twenty or more workers working without the aid of power, section 2m(ii) (iii) those registered under section 85 of the Act under which the state government makes applicable the provisions of the act even though the above conditions are not

fulfilled. However, defence factories are excluded. The table 19 gives the distribution of working factories according to the size of the factory in terms of average daily employment of workers. The table 20 gives number of working factories and average daily employment therein according to major groups of industries. It must be mentioned here that the number of workers shown in these two tables are the average daily number of workers in the year and not the total number on the roll of the factories. The figures are given for the factories classified as per National Industrial classification of 1970 adopted by Govt. of India. Table 21 gives important characteristics of industries such as fixed capital, capital workers, wages to workers, total output and input etc. This information is based on the Annual survey of Industries for the year 1971.

Table 22 shows, registration, vacancies notified, placements done and no. of employment seekers on the live register of the employment exchange at the end of the year, while table 23 indicates occupational distribution of placements according to National classification. Table 24 gives no. of employees in State, Central and Quasi Govt. local bodies and private institutions in different industries.

Table 26 presents data on consumption of electricity by types of use sources of electric supply employment in electricity department and total income accruing to staff is incorporated in this table.

Co-operation :

This group consists of three tables only, relating to co-operative societies. Table 27 pertains to no. & type of societies their membership, share capital, and other funds, working capital loan advances and loans outstanding and cost of management. Owned capital shows paid up capital. Borrowing denotes the total borrowings (other than deposits) outstanding at the end of the period. Working capital includes paid-up capital, deposits and borrowings. Loans outstanding includes outstanding in respect of loans, cash credits and over drafts and the amount of the outstanding bills purchased or discounted. Over dues refer to the mount of loans or instalments which was due for collection but which was not actually collected and for the repayment of which no extention has been granted by the competent authority.

Table 28 deals with consumers cooperative societies. It shows, no. and type of societies, their membership, no. of share capital, reserve and other funds, working capital, value of good purchased and sold and net profit and loss. Table 29 shows no. of registered money lenders, loans advanced to the traders and non-traders.

Medical and Public Health :

This group includes four tables :

Table 30 gives no. of hospitals, dispensaries and beds attached to each hospital. Table 31 gives births and deaths registered in Gr. Bombay. Table 32 provides statistics about no. of deaths due

to important causes in the district during 1975-76.

Table 33 relates to the family planning programme.

Education :

In all 6 tables are included in this group.

Table 34 gives distribution of pupils by standard i.e. pre-primary, primary, secondary & Higher secondary.

Table 35 gives distribution of pupils in primary and secondary schools according to medium of instructions.

Table 37 gives information regarding no. of backward class students in pre-primary, primary, secondary and higher secondary standards. Table 38 shows value of

concessions for free education granted to backward

class students. Table 39 give information regarding

no. of institutions, pupils and teachers and

expenditure incurred on teaching and non-teaching staff.

Transport and Communications :

This group contains six tables.

Table 40 relates to length of rail routes.

Table 41 shows road length according to type of roads and surface classification. Table 42 indicates type-wise no. of motor vehicles in operation.

Table 43 is concerned with operational statistics of the B.E.S.T. undertaking. Main items included in this table are fleet, but routes passengers, earnings traffic staff etc. Table 44 presents statistical data of Maharashtra State Road Transport Corporation.

Table 45 relates to data on postal, telegraph and telephone statistics. It also includes no. of radio and television licences issued.

10. Local bodies :

Table 46 shows income and expenditure of the Bombay Municipal Corporation.

11. Expenditure under district plan :

Table 47 displays annual plan expenditure under different developmental heads, sub-heads in respect of district level plan schemes during the years 1974-75 to 1976-77.

12. Prices and Index Numbers :

This group includes three tables :

Table 48 shows wholesale average prices of certain agricultural commodities in various markets, while table 49 indicates average retail prices of important commodities. Table 50 gives consumers price index number for working class from April 1975 to March 1976.

13. Miscellaneous :

In all 10 tables are included in this group.

Table 51 is regarding strength of police (excluding C.I.D. staff and railway police staff), police stations, police vehicles and total cost on police force. Table 52 gives crime statistics while table 53 indicates no. of cases disposed of in civil and criminal courts, Table 54 relates to cinema statistics. It includes permanent, touring talkies, dramatheatres etc.

Table 55 indicates data on scheduled commercial banks, co-operative banks etc.

Table 56 gives data on no. of joint stock companies while Table 57 indicates no. of life insurance policies issued and amount insured. Table 58

shows collection of small savings while table 59 gives land revenue collection.

Lastly table 60 indicates no. of printing presses, news papers and periodicals published in the Gr. Bombay district.

....

PART - II

DISTRICT STATISTICAL ABSTRACT

FOR THE YEAR

1975-76 & 1976-77

Table No. 1.

Area, Houses and Population in Greater Bombay, 1971.

Sr. No.	Greater Bombay District Wards	Area in Sq. Km.	Popula- tion per Sq. Km.	No. of occupied residential Houses.	No. of House holds.	Population.		
						Persons	Males	Females.
1	2	3	4	5	6	7	8	9
	Greater Bombay	603.00	9,901	12,03,126	13,08,845	59,70,575	34,78,378	24,92,197
	Bombay City	68.71	44,686	5,75,859	6,30,180	30,70,378	18,38,843	12,31,535
	<u>Ward.</u>							
1.	A	11.41	16,135	33,014	39,154	1,84,104	1,15,910	68,194
2.	B	2.46	71,191	33,128	41,288	1,75,131	1,06,237	68,894
3.	C	1.78	1,75,546	61,315	70,558	3,12,472	1,92,580	1,19,892
4.	D	6.63	57,729	77,753	83,728	3,82,742	2,18,578	1,64,164
5.	E	7.41	71,354	87,927	97,696	5,28,736	3,22,473	2,06,263
6.	F	21.17	31,295	1,27,270	1,34,457	6,62,516	3,89,227	2,73,289
7.	G	17.85	46,200	1,55,452	1,63,299	8,24,677	4,93,838	3,30,839
	<u>Suburbs.</u>							
	<u>Ward.</u>							
8.	H	21.05	24,876	1,06,293	1,16,799	5,23,633	2,91,820	2,31,813

(1)

1	2	3	4	5	6	7	8	9
9.	K	47,46	12,088	1,21,335	1,31,207	5,73,693	3,24,447	2,49,246
10.	P	64,27	5,793	82,813	88,325	3,72,335	2,10,114	1,62,221
11.	R	77,56	3,041	50,351	54,802	2,35,833	1,31,743	1,04,090
12.	L	13,46	20,320	61,594	68,294	2,73,507	1,61,107	1,12,400
13.	M	54,92	5,761	72,571	75,601	3,16,371	1,76,358	1,40,013
14.	N	55,44	8,652	1,05,800	1,14,789	4,79,660	2,74,969	2,04,691
15.	T	34,84	3,593	26,510	28,848	1,25,165	68,977	56,188

Note :- The total area of Gr. Bombay has been shown as reported by the Surveyor General of India. The total of the section area figures may not tally with the District Area.

Source :- 1971 Population Census Publication.

Table No. 2.

Decadal Variation in Population since 1901 to 1971 in Gr. Bombay.

Sr. No.	YEAR	Population			Percentage Decadal variation in population.
		MALES	FEMALES	TOTAL	
1	2	3	4	5	6
1.	1901	5,61,825	3,66,169	9,27,994	-
2.	1911	7,31,634	4,17,123	11,48,757	+ 23.79
3.	1921	8,84,301	4,95,147	13,80,440	+ 20.17
4.	1931	8,73,102	5,19,710	13,97,812	+ 1.26
5.	1941	11,14,983	6,86,373	18,01,356	+ 28.87
6.	1951	18,68,335	11,26,109	29,94,444	+ 66.23
7.	1961	24,96,176	16,55,830	41,52,056	+ 38.66
8.	1971	34,78,378	24,92,197	59,70,575	+ 43.80

Source :- 1971 Population Census Publications

-4-
Table No. 3.

Ward-wise sections in Gr. Bombay, 1971.

Sr. No.	Gr. Bombay.	Ward	Section.
1	2	3	4
1.	Greater Bombay	A.	1. Upper Colaba
			2. Middle and Lower Colaba
			3. Fort (South)
			4. Fort (North)
			5. Esplanade.
		B.	6. Mandvi
			7. Chakala
			8. Umerkhadi
			9. Dongri
		C.	10. Khara Talao
			11. Kumbharwada
			12. Bhuleshwar
			13. Market
			14. Dhobi Talao
		D.	15. Fanaswadi
			16. Khetwadi
			18. Girgaum
			19. Chaupati
			20. Walkeshwar
			21. Mahalaxmi
			E.
		22. Mazgaon	
		23. Tadwadi	
		24. 1st Nagpada.	
		25. 2nd Nagpada.	
		26. Kamathipura	
		27. Byculla.	

Greater Bombay

- F. 28. Parel
29. Sewri
30. Naigaum
31. Matunga
32. Sion.
-

- G. 33. Dadar.
34. Mahim
35. Prabhadevi
36. Worli
37. Chinchpokli
38. Lovegrove
-

- H. 39. Slaughter House
40. Colwada and ^Bandra Hill
41. Pali Hill
42. Danda
43. Khar Scheme.
44. Khar and Pali
45. Hill road and Turner Road
46. Santacruz (West)
47. Santacruz (Central)
48. Santacruz (East)
-

- K. 49. Vile Parle (East)
50. Vile Parle (West)
51. Juhu
52. Andheri (West)
53. Varsova
54. Madh
55. Andheri (East)
56. Jogeshwari (East)
57. Jogeshwari (West)
-

1	2	3	4
Greater Bombay.	P.	58.	Goregaon Village Moroshi
		59.	Aarey
		60.	Eksar Pakhadi
		61.	Erangal and Daroli
		62.	Malad (West)
		63.	Malad (East)
		64.	Kurad, Dindoshi, Chincholi, and Vadhwan
		65.	Valnai, Malvani, Akse and Marve.
		66.	Manori Island.
	R.	67.	Kandivali and Charkop
		68.	Poisar and Akurli
		69.	Borivali, Shimpoli.
		70.	Eksar, Mandapeshwar
		71.	Govai and Kulvem
		72.	Kanheri
		73.	Magathane
		74.	Dahisar.
	K.	75.	New Mills, Kurla
		76.	Station, Takia Kurla
		77.	Swadeshi Mills, Chuna Bhatti, Khajuri Bhatti and Kasaiwada.
		78.	Bazar, Church Hall, Naupada and Villages.
	M.	79.	Chembur Proper
		80.	Mahul, Trombay, Govandi Vadavali, Borla, Mankhurd and Mandla.

1	2	3	4
---	---	---	---

Greater Bombay

N.

81. Ghatkopar

82. Kiroli Ghatkopar

83. Panjrapol

84. Vikhroli

85. Bhandup.

T.

86. Mulund (East)

87. Mulund (West)

88. Nahur, Tulsi, Gundgaon,
Vihar, Sai and Klerobad.

Table No. 3.

Sex Ratio and Percentage of Literacy in Gr. Bombay 1971

Sr.No.	District.	Population		Sex Ratio (Females per 1000 Males)	Literacy percentage		Total
		Male	Female		Male	Female	
1	2	3	4	5	6	7	8
1.	Ward - A.	1,15,910	68,194	588	74.0	62.4	69.7
2.	Ward - B	1,06,237	68,894	648	71.6	60.9	67.4
3.	Ward - C	1,92,580	1,19,992	623	77.4	69.2	74.2
4.	Ward - D	2,18,578	1,64,164	751	77.0	69.5	73.8
5.	Ward - E	3,22,473	2,06,263	640	67.5	53.3	62.0
6.	Ward - F	3,89,227	2,73,289	702	71.9	57.7	66.1
7.	Ward - G	4,93,838	3,30,839	670	67.9	51.0	61.1
8.	Ward - H	2,91,820	2,31,813	794	69.8	56.8	64.0
9.	Ward - K	3,24,447	2,49,246	768	67.9	54.5	62.1
10.	Ward - P	2,10,114	1,62,221	772	68.8	56.5	63.4
11.	Ward - R	1,31,743	1,04,090	790	68.8	56.7	63.5
12.	Ward - L	1,61,107	1,12,400	698	63.3	44.7	55.6
13.	Ward - M	1,76,358	1,40,013	794	64.6	48.0	57.3
14.	Ward - N	2,74,969	2,04,691	744	68.4	50.9	60.9
15.	Ward - T	68,977	56,138	815	68.7	55.1	62.6

Source :- 1971 Population Census Publications.

Table No. 5.

Number of workers and Non-workers in each ward of Greater Bombay as per 1971 Census.

Sr No	Greater Bombay Ward.	Total workers.	W O R K E R S								Non-workers.		
			Culti-vators	Agri-labou-res.	Live stock purchas- ds etc.	Mining squarr- ing	Manufacturing etc.	Const- ruc- tion.	Trade & Commerce	Trans- port storage & communi- cation.		Other services	
1	2	3	4	5	6	7	8	9	10	11	12	13	14
	Greater Bombay.	21,98,098	2,672	2,958	20,088	1,944	29,142	9,00,361	67,012	4,91,515	2,36,899	4,45,507	37,72,477
	<u>Ward</u>												
1.	A	86,627	63	198	488	50	417	12,056	1,572	22,128	13,281	35,464	97,477
2.	B	67,582	16	7	49	11	1,305	15,851	1,186	25,893	11,340	11,924	1,07,549
3.	C	1,29,686	264	59	51	26	3,559	32,506	4,820	57,068	10,549	20,784	1,82,786
4.	D	1,53,565	114	34	130	41	2,418	39,818	4,630	43,600	11,881	50,899	2,29,177
5.	E	2,11,405	141	156	226	122	5,118	84,482	3,310	48,325	29,700	39,825	3,17,331
6.	F	2,42,901	172	63	315	13	1,864	1,09,924	4,149	43,040	31,558	51,803	4,19,615
7.	G	3,18,689	149	89	1,219	58	3,173	1,69,057	6,368	53,308	27,694	57,574	5,05,988
8.	H	1,79,344	81	76	1,915	113	1,671	67,951	7,501	36,981	21,666	41,389	3,44,289
9.	K	1,99,483	240	327	6,655	533	2,523	83,720	7,765	41,130	18,637	37,953	3,74,210
10.	P	1,27,790	433	390	5,410	59	1,874	50,805	5,352	29,942	10,444	23,081	2,44,545
11.	R	78,983	610	1,162	1,293	74	1,028	30,853	3,710	20,560	6,790	12,903	1,56,850
12.	L	98,534	93	92	805	334	1,069	54,447	2,649	16,083	10,921	12,041	1,74,973
13.	M	1,01,769	91	187	605	342	1,563	47,478	6,423	15,202	12,191	17,687	2,14,602
14.	N	1,50,985	160	75	606	153	1,311	82,011	5,663	28,626	15,058	26,322	3,18,675
15.	T	40,755	45	43	321	15	249	18,492	1,914	9,529	4,120	5,858	84,410

Source :- 1971 Population Census publications.

Table No. 6.

Scheduled Castes, Scheduled Tribes & Buddhists in Gr. Bombay
according to 1971 Population Census.

District.	Total Population	Persons of			Percentage to total Population.		
		Scheduled Castes.	Scheduled Tribes.	Buddhists.	Scheduled Castes.	Scheduled Tribes.	Buddhists.
1	2	3	4	5	6	7	8
Greater Bombay	59,70,575	2,10,497	30,016	2,84,303	3.53	0.50	4.76

Source :- 1971 Population Census Publication.

Table No. 7.

Distribution of population according to (A) Age Group, (B) Religion and
(C) Language Group in Gr. Bombay as per 1971 population census.

(in '000)

(A) Population according to Age Group.

All Ages.	0 - 14 Years	15 - 19 Years	20 - 24 Years	25 - 29 Years	30 - 39 Years	40 - 49 Years	50 - 59 Years.	60 Years and Above	Age Not stated.
1	2	3	4	5	6	7	8	9	10
59,70,575	19,44,840	5,69,048	7,12,440	6,34,542	9,65,652	6,07,769	3,16,731	2,19,215	338

(B) Population according to Religion

All Religions.	Hindus	Muslims	Christians.	Sikhs	Buddhists	Jains	Other religion not and stated.	Religions not stated.
1	2	3	4	5	6	7	8	9
59,70,575	41,10,746	8,43,358	3,75,265	42,862	2,84,303	2,44,721	68,915	405

Table No. 7 Contd/-..

(C) Population according to Language group.

All Languages-	Assa- me se	Bengali	Gujarati	Hindi	Kannad	Kash- miri	Malayalam	Marathi	Oriya.
1	2	3	4	5	6	7	8	9	10
59,70,575	260	22,867	10,53,418	5,96,959	1,25,925	905	1,26,374	25,07,478	3,501
Punjabi	Sanskrit	Sindhi	Tamil	Telgu	Urdu	Others.			
11	12	13	14	15	16	17			
83,802	44	1,55,468	1,56,628	1,28,798	6,47,976	3,55,172			

Source :- Director of Census of operations, Bombay.

Table No. 8.

Slums and slum population in Gr. Bombay during 1975-76

Sr No.	District Ward	No. of Slums Prevailing.						Slum Population.					
		On Govt. Land	On Pvt. Land	On Municipal Land	On Central Govt. Land	Other Land	Total	On Govt. Land	On Pvt. Land	On Municipal Land	On Central Govt. Land	Other Land	Total
1	2	3	4	5	6	7	8	9	10	11	12	13	14
1.	Bombay City	38	-	-	-	-	38	65,279	-	-	-	-	65,279
2.	Andheri Taluka	110	-	-	-	-	110	87,010	-	-	-	-	87,010
3.	Borivli Taluka	79	-	-	-	-	79	64,812	-	-	-	-	64,812
4.	Kurla Taluka	188	-	-	-	-	188	2,39,965	-	-	-	-	2,39,965
5.	Bombay & BSD	-	-	-	-	M.H.B.	47	-	-	-	-	M.H.B.	1,01,959
						47							1,01,959
6.	A- Ward.	-	1	-	5	-	6	-	1,441	-	9,267	-	10,708
7.	D- Ward.	-	5	3	-	-	8	-	4,488	8,069	-	-	12,557
8.	E- Ward.	-	6	14	1	-	21	-	1,397	6,825	242	-	8,464
9.	F- North	-	4	16	10	-	30	-	8,277	41,706	17,462	-	67,445
10.	F- South	-	5	43	1	-	49	-	3,223	68,353	2,530	-	74,106
11.	G- North	-	27	61	8	-	96	-	16,742	1,40,327	11,016	-	1,68,085
12.	G- South	-	12	58	6	-	76	-	5,219	87,125	3,668	-	96,012

- 2 -

1	2	3	4	5	6	7	8	9	10	11	12	13	14
13. H- East	-	35	12	35	-	82	-	86,273	6,803	73,161	-	1,56,242	
14. H-West	-	32	-	1	-	33	-	26,180	-	22	-	26,202	
15. K- East	-	40	4	20	-	64	-	1,63,971	40,529	23,402	-	2,32,902	
16. K- West	-	22	8	1	-	31	-	53,385	4,790	121	-	58,596	
17. L- Ward	-	44	11	18	-	73	-	1,76,808	8,371	3,125	-	1,88,304	
18. M- Ward	-	77	23	13	-	113	-	86,735	1,02,047	15,367	-	2,04,149	
19. N- Ward	-	83	24	7	-	114	-	1,32,522	27,230	5,681	-	1,65,483	
20. P- Ward	-	79	14	1	-	94	-	1,26,302	22,033	230	-	1,48,615	
21. R- Ward	-	78	6	2	-	86	-	1,27,424	6,023	2,607	-	1,36,059	
22. T- Ward	-	131	4	2	-	137	-	2,95,790	2,513	165	-	2,98,468	
Total Gr. Bombay	415	681	301	131	47	1,575	4,57,066	13,21,482	5,72,799	1,63,116	1,01,959	26,21,422	

Source :- Maharashtra Slum Improvement Board, Bombay.

Table No. 9.

Monthwise rainfall at selected centres in Gr. Bombay
during the year 1975 -

(Rainfall in Millimetres)

Sr. No.	Month	Colaba Centre.			Santacruz Centre.		
		No. of Rainy days	Rain-fall	Normal Rain-fall	No. of Rainy days	Rain-fall	Normal Rain-fall
1	2	3	4	5	6	7	8
1.	January	-	-	2.0	-	-	0.1
2.	February	-	-	1.1	-	-	0.
3.	March	-	-	0.4	-	-	0.1
4.	April	-	-	2.8	-	-	0.4
5.	May	1	0.6	161.0	1	1.5	20.0
6.	June	18	539.4	520.3	15	693.8	647.5
7.	July	21	910.2	709.5	20	834.7	945.4
8.	August	27	715.0	439.3	28	772.5	660.4
9.	September	14	453.3	297.0	16	480.5	309.2
10.	October	7	173.5	58.0	9	126.1	117.0
11.	November	-	-	20.6	-	-	7.2
12.	December	-	-	2.2	-	-	0.9

Table No. 9 (Contd/...)

Monthwise rainfall at selected centres in Gr. Bombay
during the year 1976 -

(Rainfall in Millimetre)

Sr No	Month	Colaba Centre			Santacruz Centre		
		No. of Rainy Days	Rain-fall	Normal rain-fall	No. of Rainy Days	Rain-fall	Normal rain-fall
1	2	3	4	5	6	7	8
1.	January	-	-	2.0	-	-	0.1
2.	February	-	-	1.1	-	-	0.9
3.	March	-	Trace	0.4	-	0.6	0.1
4.	April	-	-	2.8	-	-	0.4
5.	May	-	1.9	16.0	-	1.1	20.0
6.	June	14	360.5	520.3	15	443.1	647.5
7.	July	22	695.9	709.5	25	855.7	945.4
8.	August	17	332.3	439.3	22	577.7	660.4
9.	September	16	398.5	297.0	16	393.2	309.2
10.	October	-	-	88.0	-	0.9	117.0
11.	November	5	33.9	20.6	2	33.0	7.2
12.	December	-	-	2.2	-	-	0.9

Source:- Regional Meteorological Centre, Colaba, Bombay-5.

Table No. 10

Maximum and Minimum Monthly temperature of Selected
Centres in Gr. Bombay during the year 1975 -

(Temp. in C°)

Sr. No.	Month	Colaba Centre		Santacruz Centre	
		Maximum	Minimum	Maximum	Minimum
1	2	3	4	5	6
1.	January	29.1	18.5	30.4	15.6
2.	February	29.1	19.6	30.9	17.1
3.	March	29.9	21.7	31.8	20.0
4.	April	31.7	24.5	33.0	23.5
5.	May	33.1	27.0	33.2	26.4
6.	June	31.5	25.9	31.3	25.6
7.	July	30.1	25.3	30.0	25.0
8.	August	29.3	24.7	29.2	24.5
9.	September	30.1	24.6	30.4	24.3
10.	October	31.0	24.7	31.5	23.9
11.	November	32.4	22.0	32.4	19.8
12.	December	31.1	19.7	31.9	16.3

Table No. 10 (Contd/-..)

Maximum & Minimum Monthly temperature of selected centres
in Gr. Bombay during the year 1976 -

(Temp. in C°)

Sr. No.	Month	Colaba Centre		Santacruz Centre	
		Maximum	Minimum	Maximum	Minimum
1	2	3	4	5	6
1.	January	29.4	19.3	30.9	16.3
2.	February	30.1	20.5	32.3	17.4
3.	March	31.9	23.0	34.4	20.8
4.	April	31.1	24.2	31.3	23.0
5.	May	31.6	25.2	32.5	25.6
6.	June	30.4	25.0	31.1	25.6
7.	July	30.3	25.3	30.2	25.0
8.	August	30.3	25.4	30.0	24.6
9.	September	30.1	24.6	30.1	24.0
10.	October	32.3	24.6	33.8	23.8
11.	November	33.1	24.7	34.0	22.7
12.	December	31.2	27.3	32.4	19.4

Source:- Regional meteorological centre, Colaba, Bombay-5.

Table No. 11.

Land utilisation in Gr. Bombay District during 1972-73.

Sr. No.	Particulars.	Area (In hundred hectorres.)
1	2	3
1.	Geographical area.	380
2.	Forests	15
3.	Not available for Cultivators :	
	i) Land put to non-agril. uses	163
	ii) Barren and uncultivated land	72
	<u>Total</u>	<u>235</u>
4.	Other uncultivated land excluding fallow lands :	
	i) Permanent pastures and other grazing land.	12
	ii) Land under miscellaneous crops trees & groves not included in area sown.	
	iii) Culturable Waste	13
	<u>Total</u>	<u>25</u>
5.	Fallow lands :	
	i) Current fallows.	3
	ii) Other fallows.	33
	<u>Total</u>	<u>36</u>
6.	Net area sown	69
7.	Area sown more than once.	1
8.	Gross cropped area	70

Source :- Statistical Abstract of Maharashtra (1972-73)

Table No. 12.

Area and outturn of principal crops in G. Bombay during 72-73.(Area in hundred hectares and
outturn in hundred tonnes.)

Sr. No.	Crop.	Area.	Out-turn
1	2	3	4
1.	Rice	11	8
	<u>Total Cereals.</u>	<u>11</u>	<u>8</u>
2.	Chillies.	1	1

Source :- Statistical Abstract of Maharashtra (1972-73)

Table No. 13.

Area irrigated under different crops in Gr. Bombay
during 1972-73 and 1973-74.

(Area in hundred hectares)

Sr. No.	Crops	Year	
		1972-73	1973-74
1	2	3	4
1.	Rice	-	-
2.	Wheat	-	-
3.	Jawar (Kharif)	-	-
4.	Jawar (Rabi)	-	-
5.	Bajri	-	-
6.	Barley	-	-
7.	Maize	-	-
8.	Ragi	-	-
9.	Gram	-	-
10.	Tur	-	-
11.	Chillies	-	-
12.	Sugar Cane	-	-
13.	All food crops.	1	1
14.	Cotton	-	-
15.	Ground nut	-	-
16.	Tobacco	-	-
17.	All non food crops	1	1
	<u>Total irrigated area(gross)</u>	2	2

Source :- Statistical Abstract of Maharashtra (1972-73)

Table No. 14.

Animal Husbandary

Live stock in Gr. Bombay (As per 1972 Live Stock Census)

Sr No	District.	Cattle		Buffaloas		Sheep	Goats	Horses and ponies	Other Live Stock	Poultry.
		Total	in Milk	Total	in Milk					
1	2	3	4	5	6	7	8	9	10	11
1.	Greater Bombay	11,849	4,363	91,543	74,478	6,678	26,002	995	7,792	2,59,528

Table No. 15.

Veterinary Statistics in Greater Bombay during 1975-76 and 1976-77.

Dist:- Gr. Bombay.

Sr No	Year	No. of Veterinary Institutions.							Others	Animals treated in		
		Govt. aided			Municipal aided.			Govt. aided		Municipal	Others.	
		Hospi- tals	Dispen- saries	Aid Cent- res.	Hospi- tals	Dispe- nsar- ies.	Aid Centr- es.	Hospi- tals		aided Hospi- tals		
		3	4	5	6	7	8	10		11	12	
1.	1975-76	-	-	3	-	1	-	1 Society for pre- vention of cruel- ty to Animals.	8961	-	Not Available.	
2.	1976-77	-	-	3	-	1	-	1 Society for pre- vention of cruel- ty to Animals.	9034	-	Not Available.	

Source : Deputy Director, Animal Husbandry, Bombay Region, Mulund.

Table No. 16.

Dairy Development.

Miscellaneous statistics regarding Milk Supply in Gr. Bombay.

Sr. No.	Item	Unit	Particulars.	
			1975-76	1976-77
1	2	3	4	5
1.	No. of Govt. Dairies:			
	Aarey, Worli, & Kurla	No.	3	3
2.	Total capacity at the Dairy Plant.	Ltrs. of Milk per day (000)		
	Aarey	do	250	250
	Worli	do	450	450
	Kurla	do	180	180
			880	880
3.	Milk processed and Distributed.			
	Processed	Ltrs of Milk per day (000)	640	735
	Distributed		640	735
4.	No. of Milk card holders.			
	1. Retail consumers	No	6,61,032	8,06,088
	2. Bulk consumers	No	845	889
5.	No. of Milk Booths.			
	1. Department.	No. Part time	1,158	1,280
		Full Time	61	44
	2. Other	No	Nil	Nil

1	2	3	4	5
6. Milk Collection.	Ltrs. of Milk per day (000)			
a) Agency licensees	- do -		27	27
b) from Mofussil area of Maharashtra	- do -		453	573
c) Gujarath	- do -		52	14
d) Others	- do -		-	-
		Total	532	620
7. Quantity of Milk powder	M.T.			
a) Imported	- do -		1,958	2,214*
b) Used	- do -		2,729	2,579*
				* This includes indigenous skim milk powder.
8. Quantity of other item prepared and distributed.	M.T.			
<u>Prepared.</u>				
a) Ghee	- do -		1,467	1,253
b) Butter	- do -		-	-
c) Cheese	- do -		19	23
d) Ice Cream	- do -		-	-
<u>Distributed.</u>				
a) Ghee	- do -		1,524	1,216
b) Butter	- do -		-	-
c) Cheese	- do -		19	20
d) Ice Cream	- do -		-	-

Source :- Office of the General Manager, Greater Bombay Milk Scheme, Worli Dairy, Bombay - 400 018.

Miscellaneous Statistics relating to fisheries
Dist. : Gr. Bombay

No.	Item	Unit	Particulars	
			1975-76	1976-77
1.	2.	3.	4.	5.
1.	Total Coastline	Km.	80	80
2.	Fishing Padas	No.	21	21
3.	No. of fishermen community	No.	31,955	31,955
			(As per census 1972)	
4.	No. of fishermen actually engaged in fishing trade			
	1. Active	No.	3,417	3,417
	2. Allied	No.	9,120	9,120
5.	Total No. of boats	No.	1,918	1,918
	Plank built	No.	425	425
6.	Total No. of Tonnies	No.	933	933
7.	No. of Mechanised boats	No.	560	560
8.	Total Fish Production			
	1) Marine	M.T. (000)	1.69	1.39
	2) Inland	M.T. (000)	0.67	0.67
9.	No. of fishermen's Co-operative societies	No.	15	N.A.
	Apex	No.	1	N.A.
10.	Membership of co-op. societies	No.	3,669	N.A.
	Membership (Apex)	No.	3,453	N.A.
11.	Fish handled by co-op. societies	M.T. (000)	N.A.	N.A.
12.	No. of fish curing yards	No.	Nil.	Nil
13.	No. of fish farms	No.	1	1

Source :- Director of Fisheries, Bombay.

Table No. 18.

Factory Statistics (Annual) 1975.

Average daily employment of workers in Factories in Gr. Bombay District.

Sr. No.	Industry Sub-Groups.	Indus-try Code No.	No. of regis-tered fac-to-ries	No. of No. of closed fac-to-ries.	No. of worki-ng fac-to-ries Submi-tting returns	Total workers in (6)			Total No. of Mandays worked.	No. of working fac-to-ries not submitt-ing returns	No. of worker in (9)
						Total	Males	Females			
1	2	3	4	5	6	7	8	9	10	11	12
1.	Activities not adequately defined (Other than those in X.O.)	X10	1	-	1	18	9	9	5,292	-	-
2.	Other forest products not elsewhere classified such as mur.h.	059	7	1	5	98	4	94	29,797	1	14
3.	Salt mining and quarrying including crushing screening and evaporating in pans.	192	2	-	-	-	-	-	-	2	102
4.	Slaughtering, preparation and preservation of meat.	200	2	-	1	1,138	1,138	-	4,06,266	1	74
5.	Manufacturing of dairy products.	201	7	-	6	732	717	15	2,42,765	1	100
6.	Canning and preservation of fruits and vegetables.	202	11	-	11	492	295	197	1,50,031	-	-

1	2	3	4	5	6	7	8	9	10	11	12
7. Canning, preserving and processing of fish, crustacean and similar foods.	203	4	1	2	54	28	26		2,740	1	13
8. Grain mill products.	204	45	3	39	1,748	1,740	8		5,04,104	3	64
9. Manufacture of bakery products	205	129	3	115	4,546	3,982	564		15,10,125	11	270
10. Production of common salt	208	12	4	7	395	395	7		93,004	1	65
11. Mfg. of Cocoa, Chocolate and sugar confectionery (including sweet-meats.)	209	19	1	13	319	247	72		97,545	5	207
12. Mfg. of hydrogenated oils, vanaspati ghee etc.	210	4	-	4	758	749	9		2,37,942	-	-
13. Mfg. of other edible oils, fats, e.g. mustard oil, groundnut oil, til oil, etc. (inedible oils shown under 315)	211	30	2	26	1,541	1,529	12		4,51,895	2	407
14. Coffee curing, roasting and grinding.	213	2	-	2	72	71	1		21,566	-	-
15. Manufacture of ice.	215	14	-	13	250	233	17		83,510	1	20
16. Mfg. of prepared animal feeds.	216	3	-	3	117	113	4		34,487	-	-
17. Mfg. of food products not elsewhere classified.	219	24	2	16	422	367	55		1,26,867	6	267
18. Soft drinks and carbonated water industries.	224	10	-	9	1,322	1,300	22		4,26,320	1	5

1	2	3	4	5	6	7	8	9	10	11	12
19. Mfg. of Cigars, cigarettes, cheroot, cigarette tobacco.	227	7	5	5	2,629	2,435	194	7,78,439	-	-	-
20. Cotton ginning, cleaning and baling.	230	17	-	17	695	455	240	2,07,410	-	-	-
21. Cotton spinning, weaving, shrinking, sanforizing, mercerising and finishing of cotton textiles in mills.	231	98	8	81	1,65,113	1,60,958	4,155	5,19,67,641	9	7,858	-
22. Printing, dyeing and bleaching of cotton textiles.	232	70	8	49	5,965	5,926	39	18,94,839	13	518	-
23. Cotton spinning other than in mills. (charkha)	233	1	-	-	-	-	-	-	1	30	-
24. Weaving and finishing of cotton textiles in hand looms other than Khadi	235	6	-	2	20	19	1	5,925	4	38	-
25. Weaving and finishing of cotton textiles in power looms.	236	42	1	34	5,513	5,342	171	17,34,072	7	178	-
26. Cotton textiles not elsewhere classified.	239	14	3	9	423	237	186	1,27,427	2	60	-
27. Wool cleaning, baling and pressing.	240	3	1	2	170	135	35	52,048	-	-	-

1	2	3	4	5	6	7	8	9	10	11	12
28.	Wool spinning, weaving and finishing in mills.	241	8	-	7	1,368	1,301	67	4,05,318	1	60
29.	Wool spinning and weaving (other than in mills.)	242	6	-	6	762	704	58	2,21,590	-	-
30.	Mfg. of wool not elsewhere classified.	244	1	-	1	494	494	-	1,52,646	-	-
31.	Spinning, weaving and finishing of silk textiles.	245	118	8	97	4,016	3,895	121	11,94,227	13	400
32.	Printing, dyeing and bleaching of silk textiles.	246	30	2	24	3,652	3,604	48	11,36,671	4	495
33.	Spinning, weaving and finishing of other textiles synthetic fibres rayons.	247	105	7	84	11,539	11,205	334	35,06,152	14	578
34.	Printing, dyeing and bleaching of synthetic textiles	248	56	3	50	5,153	5,114	39	15,69,342	3	271
35.	Silk and synthetic fibre textiles not elsewhere classified.	249	47	1	41	3,137	2,919	218	9,26,093	5	67
36.	Mfg. of jute bags and other jute textiles not elsewhere classified.	259	2	-	2	40	24	16	11,840	-	-
37.	Knitting Mills.	260	65	2	57	4,092	3,773	319	12,42,045	6	240
38.	Mfg. of all types of threads cordage, ropes, twines, nets etc.	261	33	1	30	1,002	864	138	2,97,837	2	36

1	2	3	4	5	6	7	8	9	10	11	12
39. Embroidery and making of crepes, laces and fringes,	262	19	-	14	996	841	155	3,06,535	5	135	
40. Weaving carpets, rugs and other similar textiles products.	263	4	-	1	15	15	-	4,635	3	37	
41. Mfg. of all types of textiles garments including weaving apparel.	264	188	19	132	10,365	8,130	2,235	31,99,494	37	2,162	
42. Mfg. of rain-coats, hats, etc.	265	4	1	3	294	267	27	88,860	-	-	
43. Mfg. of made up textiles goods (except garments) such as curtains, mosquito nets, etc.	266	5	1	3	141	131	10	41,419	1	20	
44. Mfg. of water proof textiles such as oil, cloth, tarpaulin etc.	267	11	-	10	999	997	2	2,94,411	1	18	
45. Mfg. of textiles not elsewhere classified like linoleum, padding, wadding upholstery, filling etc.	269	11	3	7	662	449	213	1,90,400	1	28	
46. Mfg. of Veneer, plywood, and their products.	270	7	-	7	41	332	9	1,02,950	-	-	
47. Sawing & Planing of wood- (other than plywood)	271	23	1	19	251	251	-	2,76,213	3	46	

10	2	3	4	5	6	7	8	9	10	11	12
48. Mfg. of wooden & cane boxes, crates, drums, barrels and other wooden containers, baskets & other other rattan, bamboo, reed & willow wares made entirely or mainly of cane, rattan, reed, bamboo and willow.	272	33	-	28	704	703	1	2,08,795	5	173	
49. Mfg. of structural wooden goods, (including treated timber) such as beams, posts, doors & windows (excluding hewing & rough shaping of poles, bolts and other wood material which is classified under logging)	273	4	2	2	121	116	5	32,593	-	-	
50. Mfg. of wooden industrial goods such as bobbins, blocks, handles saddling & similar equipment and fixtures.	274	22	-	20	380	329	51	1,14,550	2	34	1 2 1
51. Mfg. of cork & cork products.	275	6	-	3	102	92	10	30,534	3	452	
52. Mfg. of wooden furniture and fixtures.	276	19	1	18	366	366	-	1,08,556	-	-	
✓ 53. Mfg. of bamboo and cane furniture and fixtures.	277	1	-	1	14	14	-	4,074	-	-	
✓ 54. Mfg. of wood, bamboo & cane products not elsewhere classified.	279	11	-	11	440	403	37	1,28,152	-	-	
55. Mfg. of pulp, paper & paper board including newsprint.	280	26	1	21	1,150	1,083	67	3,35,085	4	149	

1	2	3	4	5	6	7	8	9	10	11	12
56.	Mfg. of container & boxes of paper and paper board.	281	113	7	97	2,738	2,563	175	7,97,407	9	176
57.	Mfg. of pulp products not elsewhere classified like dolls	282	1	-	1	184	182	2	47,858	-	-
58.	Mfg. of paper and paper boards, articles not elsewhere classified.	283	28	1	23	954	827	127	4,64,583	4	61
59.	Printing & Publishing of newspapers.	284	7	-	5	1,863	1,863	-	6,47,774	2	87
60.	Printing & Publishing of periodicals, books, journals, atlases, maps & sheet music, directories etc.	285	102	5	85	4,750	4,691	59	13,67,361	12	247
61.	Engraving, etching, block making etc.	287	31	-	28	577	568	9	1,99,274	3	33
62.	Book-binding	288	26	-	21	275	275	-	83,118	5	122
63.	Printing, Publishing and allied activities not elsewhere classified like envelope printing, picture post card printing, embossing etc.	289	312	19	258	8,713	8,460	253	26,31,725	35	1,008
64.	Tanning, curing, finishing, embossing and japanning of leather.	290	9	1	8	446	426	20	93,916	-	-

1	2	3	4	5	6	7	8	9	10	11	12
65. Mfg. of footwear (excluding repair) except vulcanized or moulded rubber or plastic footwear.	291	19	-	16	615	376	239	1,81,860	3	39	
66. Mfg. of Leather consumer goods (other than apparel & footwear)	293	10	-	9	166	118	48	50,254	1	39	
67. Mfg. of leather and fur products not elsewhere classified.	299	2	-	1	15	15	-	4,380	1	51	
68. Tyre and tube industries.	300	18	-	16	4,973	4,967	6	14,06,964	2	33	
69. Mfg. of footwear made primarily of vulcanized or moulded rubber.	301	34	4	26	2,466	2,293	173	7,32,368	4	57	
70. Mfg. of rubber products not elsewhere classified.	302	85	7	75	3,035	2,719	316	8,94,211	3	156	
71. Mfg. of plastic products not elsewhere classified (except house furnishing)	303	401	31	326	8,477	7,302	1,175	24,96,870	44	1,134	
72. Petroleum refineries.	304	3	-	3	1,078	1,077	1	3,70,700	-	-	
73. Mfg. of products of petroleum not elsewhere classified.	305	8	-	6	587	577	10	1,76,520	2	317	
74. Production of coal tar in coke ovens.	306	1	-	1	126	126	-	38,430	-	-	
75. Mfg. of other coal & coal tar products not elsewhere classified.	307	11	1	10	146	136	10	42,433	-	-	

1	2	3	4	5	6	7	8	9	10	11	12
76. Mfg. of basic industrial organic and inorganic chemicals & gases such as acids, alkalis & their salts, gases like acetylene, oxygen, nitrogen etc.	310	29	2	24	2,343	2,287	56	7,95,550	3	36	
77. Mfg. of fertilisers and pesticides.	311	19	-	18	2,853	2,734	119	9,49,673	1	85	
78. Mfg. of paints varnishes and lacquers.	312	59	2	53	4,627	4,281	346	13,31,226	4	223	
79. Mfg. of drugs and medicines.	313	157	6	137	15,779	11,978	3,801	41,87,298	14	287	
80. Mfg. of perfumes, cosmetics lotions, hair dressings, tooth pastes, soap in any form & synthetic detergents shampoos, shaving products, waxing cleansers, washing and scouring products and other toilet preparations.	314	44	3	35	4,081	3,663	418	11,70,722	6	561	
81. Mfg. of inedible oils.	315	8	-	7	4,496	4,249	247	13,67,343	1	57	
82. Mfg. of turpentine, synthetic resins, plastic materials and synthetic fibres like nylon, terylene except glass.	316	33	1	26	2,814	2,704	110	9,67,262	6	107	
83. Mfg. of explosives and ammunition and fire works.	318	2	-	2	60	13	47	15,480	-	-	

1	2	3	4	5	6	7	8	9	10	11	12
84. Mfg. of chemical products not elsewhere classified (including photo chemicals, sensitised films and paper)	319	106	3	96	5,752	4,852	900	16,51,192	7	108	
√85. Mfg. of structural clay products.	320	50	10	25	2,100	1,552	548	5,74,686	15	1,344	
86. Mfg. of glass and glass products.	321	47	5	39	7,025	6,588	437	24,12,437	3	220	
87. Mfg. of chinaware and porcelainware.	323	4	-	4	238	207	31	72,417	-	-	
88. Mfg. of cement, lime and plaster.	324	4	2	2	205	205	-	71,589	-	-	
89. Mfg. of structural stone goods, stone dressing and stone crushing and stoneware.	326	108	11	79	1,215	841	374	3,43,326	18	534	
90. Mfg. of asbestos, cement and other cement products.	328	5	-	5	1,206	1,197	9	3,55,666	-	-	
91. Mfg. of miscellaneous non-metallic mineral products such as slate products, abrasives, graphite products mineral wool silica products and non-metallic mineral products not elsewhere classified.	329	30	3	24	1,469	1,366	103	4,35,472	3	99	
92. Iron and steel industries.	330	1	-	1	196	196	-	15,680	-	-	

-36-

1	2	3	4	5	6	7	8	9	10	11	12
93.	Foundries for casting and forging iron and steel.	331	115	5	102	11,747	11,654	93	35,12,741	8	224
94.	Mfg. of ferro alloys	332	24	3	17	774	665	109	2,18,607	4	219
95.	Copper Manufacturing	333	28	2	24	1,962	1,059	3	3,16,676	2	49
96.	Brass Manufacturing	334	10	-	9	1,854	1,829	25	5,63,846	1	30
97.	Aluminium Manufacturing	335	38	-	34	1,705	1,647	58	5,06,280	4	163
98.	Zink Manufacturing	336	5	-	4	107	106	1	35,524	1	6
99.	Other non-ferrous metal industries.	339	39	-	38	1,739	1,717	22	5,22,327	1	11
100.	Mfg. of fabricated metal products such as metal cans, from tin plate, terne plate or enamelled sheet, metal, metal shipping containers, barrels, drums, kegs, pails, safes, vaults, enamelled sanitary and all products not elsewhere classified.	340	332	21	271	16,425	16,147	278	47,53,482	40	792
101.	Mfg. of structural metal products.	341	32	-	30	988	974	14	2,97,629	2	15
102.	Mfg. of furniture and fixtures, primarily of metal.	342	22	2	17	1,341	1,321	20	4,00,191	3	76
103	Mfg. of hand tools and general hardware	343	129	5	114	4,440	4,227	213	13,31,257	10	1,159

1	2	3	4	5	6	7	8	9	10	11	12
104	Enamelling, japanning, lacquering, galvanising, plating and polishing of metal products.	344	110	2	94	2,439	2,238	201	7,18,829	14	243
105	Mfg. of metal utensils, cutlery and kitchen ware.	345	118	1	101	2,756	2,655	101	7,97,235	16	581
106	Mfg. of metal products except machinery and transport equipment not elsewhere classified like type founding.	349	148	8	124	4,066	3,614	452	12,11,272	16	1,056
107	Mfg. of agricultural machinery and equipment and parts.	350	20	-	19	3,455	3,412	43	10,05,813	1	12
108	Mfg. and repair of drills, coal cutting machines earth moving, lifting and hoisting machinery, cranes, conveyors and road rollers and other heavy machinery and equipment used by construction and mining industries.	351	21	2	16	2,491	2,479	12	7,33,841	3	61
109	Mfg. of prime movers, boilers and steam generating plants such as diesel engines and parts.	352	19	1	18	1,821	1,807	14	5,42,461	-	-
110	Industrial Machinery for Food and Textile Industries.	353	79	6	66	3,919	3,836	83	11,56,598	7	156
111	Industrial Machinery for other than food and textile industries	354	105	1	93	4,373	4,297	76	12,56,154	11	183

1	2	3	4	5	6	7	8	9	10	11	12
112.	Mfg. of Refrigerators, Air conditioners and Fire fighting equipment and other parts components and accessories.	355	12	2	8	1,298	1,278	20	3,94,989	2	36
113.	Mfg. of alteration and repair of general items of non-electrical machinery, components equipment and accessories not elsewhere classified.	356	34	1	27	3,481	3,443	38	10,24,507	6	233
114.	Mfg. of machine, tools, their parts and accessories.	357	79	2	70	3,970	3,883	87	11,76,151	7	108
115.	Mfg. of office computing and accounting machinery and parts.	358	4	1	3	137	137	-	41,200	1	12
116.	Mfg. and repair of non electrical machinery, equipment components and accessories not elsewhere classified (such as sewing machines, automatic merchandising machines, washing laundry, dry-cleaning and pressing machines cooking service industry machines, arms and armament etc.) / ranges and ovens, other	359	298	21	248	6,756	6,623	133	19,80,275	29	1050

100

	1	2	3	4	5	6	7	8	9	10	11	12
117. Mfg. of electrical industrial machinery and apparatus and parts (such as electrical motors generators, transformers electro magnetic clutches and brakes etc.)	360	104	3	95	14,472	14,098	374	43,54,743	6	139		
118. Mfg. of insulated wires and cables.	361	24	2	16	1,806	1,782	24	5,23,468	6	141		
119. Mfg. of dry and wet batteries	362	14	1	11	2,962	2,921	41	8,96,597	2	57		
120. Mfg. of electrical apparatus appliances and their such as lamps, bulbs, tubes, sockets, switches, fans, insulated (except porcelain) conductors, irons, heaters, shavers, cleaners, etc. excluding repairing.	363	125	11	98	4,529	3,907	622	13,95,958	16	282		
121. Mfg. of radio and television transmitting and receiving sets, including transistor radio sets, sound reproducing, recording equipments including tape recorders public address systems, gramophone record and pre-recorded magnetic tapes, wire and wireless, telephone and telegraph equipment, signalling and detection equipment and apparatus, radar equipment and installation parts and supplies specially used for electronic apparatus classified in this office.	364	37	3	29	3,609	3,144	465	10,49,243	5	195		

1	2	3	4	5	6	7	8	9	10	11	12
122.	Mfg. and repair of Radio - graphic X-ray apparatus and tube and parts.	365	2	-	2	436	433	3	1,25,573	-	-
123.	Mfg. of electronic computers, control instrument and other Equipment.	366	26	-	19	1,579	1,352	227	4,45,862	7	257
124.	Mfg. of electronic components and accessories not elsewhere classified.	367	25	1	18	489	332	157	1,33,693	6	438
125.	Mfg. of electrical machinery apparatus, appliances and supplies and parts not elsewhere classified.	369	85	3	72	2,028	1,800	228	5,93,432	10	167
126.	Ship-building and repairing	370	11	1	8	7,567	7,515	52	23,13,425	2	1,645
127.	Mfg. of Locomotives and parts.	371	3	-	2	5,401	5,388	13	16,03,915	1	21
128.	Mfg. of Railway wagons and coaches and parts.	372	10	-	7	10,089	10,077	12	30,03,064	3	558
129.	Mfg. of motor vehicles and parts.	374	105	7	91	16,099	15,857	242	45,99,296	7	206
130.	Mfg. of motor cycles and scooters and parts.	375	6	-	5	2,162	2,135	27	6,07,151	1	10
131.	Mfg. of bicycles and cycle rickshaws and parts.	376	10	-	10	1,903	1,883	20	5,64,348	-	-
132.	Bullock-carts, push carts, hand carts etc.	378	2	-	2	9	9	-	2,772	-	-

1	2	3	4	5	6	7	8	9	10	11	12
133.	Mfg. of transport equipment and parts not elsewhere classified.	379	16	1	14	643	631	12	1,88,297	1	79
134.	Mfg. of medical surgical, scientific equipments.	380	41	2	32	1,113	1,031	82	3,26,781	8	221
135.	Mfg. of photographic and optical goods (excluding photo chemicals sensitised paper and film)	381	22	2	17	1,099	1,069	30	3,25,293	3	31
136.	Mfg. of watches and clocks.	382	20	1	19	1,852	1,495	357	5,38,185	-	-
137.	Mfg. of jewellery and related articles.	383	25	1	21	526	493	33	1,45,419	3	45
138.	Minting of coins	384	1	-	1	1,907	1,907	-	5,66,379	-	-
139.	Mfg. of sports and athletic goods.	385	3	-	2	102	102	-	23,733	1	17
140.	Mfg. of stationery articles like fountain pens, pencils, pens, pin cushions, tags, etc. elsewhere classified.	387	82	5	69	2,805	1,989	816	7,99,510	8	259
141.	Mfg. of Miscellaneous products not elsewhere classified such as costume jewellery, costume novelties, feathers, plumes, artificial flowers, brooms, brushes, lampshades, tobacco, pipes, cigarette holders, ivory goods, badges, wigs and similar articles.	389	79	7	62	2,176	1,529	647	6,20,535	10	186

142

1	2	3	4	5	6	7	8	9	10	11	12
142. Generation and transmission of electric energy.	400	12	-	5	577	577	-	2,09,046	7	79	
143. Distribution of electric energy to household industrial and commercial and other users.	401	8	-	5	400	391	9	1,32,071	3	189	
144. Mfg. of gas in works and distribution through mains to households industrial and commercial and other users.	410	4	-	3	943	932	11	3,29,306	1	574	
145. Water supply i.e. collection, purification and distribution of water	420	9	-	6	108	108	-	40,766	3	118	
146. Construction not elsewhere classified.	509	1	-	1	46	46	-	9,108	-	-	
147. Wholesale trade in fuel and lighting products.	611	2	-	1	219	212	7	65,043	1	5	
148. Wholesale trade in petrol, mobil oil and allied products.	620	5	-	4	173	173	-	51,885	1	95	
149. Wholesale trade in goods not elsewhere classified.	649	1	-	1	22	16	6	6,666	-	-	
150. Retail trade and others not elsewhere classified.	689	1	-	1	58	58	-	16,878	-	-	
151. Passenger transport by tram-way and bus services.	701	1	-	1	25	25	-	9,125	-	-	

	1	2	3	4	5	6	7	8	9	10	11	12
152. Supporting services to water transport like operation and maintenance of piers, docks, pilotage, light-houses, loading and discharging of vessels etc.	712	1	-	1	44	44	-	13,552	-	-		
153. Air-transport carriers (of passengers and freight)	720	1	-	1	384	383	1	1,14,432	-	-		
154. Supporting services to air transport, like operation of air ports, flying facilities, radio, beacons, flying control centres radar stations, etc.	721	4	-	4	2,820	2,813	7	8,45,079	-	-		
155. Services, incidental to transport, such as packing, crating travel agency, etc.	730	1	-	1	233	233	-	54,988	-	-		
156. Ware Housing.	740	1	-	1	18	18	-	5,382	-	-		
157. Cold - Storage	741	2	-	2	127	106	21	46,355	-	-		
158. Postal, telegraphic, wireless and signal communications.	750	1	-	1	27	27	-	8,046	-	-		
159. Data processing and tabulating services.	824	2	-	2	47	42	5	12,548	-	-		
160. Machinery and equipment rental and leasing.	827	1	-	1	80	80	-	24,000	-	-		
161. Sanitation and similar services such as garbage and sewage disposal, operation of drainage systems and all other type of work connected with public health and sanitation.	910	10	-	6	256	256	-	83,820	4	212		

11

1	2	3	4	5	6	7	8	9	10	11	12
162.	Educational services rendered by technical or vocational colleges, schools and other institutions	920	1	-	1	40	40	-	12,000	-	-
163.	Motion picture production	950	13	-	9	490	474	16	1,47,824	4	246
164.	Amusement and recreational services not elsewhere classified.	959	5	-	5	313	302	11	94,737	-	-
165.	Laundries, laundry services and cleaning and dyeing plants.	961	17	2	14	900	856	44	2,79,414	1	10
166.	Portrait and commercial photographic studios.	963	1	-	1	10	4	6	2,870	-	-
167.	Repair of footwear and other leather goods.	971	1	-	1	29	29	-	8,845	-	-
168.	Electrical repair shops	972	3	-	3	226	223	3	78,839	-	-
169.	Repair of motor vehicles and motor cycles.	973	68	4	51	6,138	6,128	10	18,28,041	13	284
170.	Repair of watches, clocks, jewellery	974	3	1	2	39	38	1	11,586	-	-
171.	Repair of enterprises not elsewhere classified	979	28	1	18	863	859	4	2,66,620	9	242
172.	International and other extra territorial bodies	980	2	-	2	105	103	2	31,229	-	-
173.	Services not elsewhere classified.	990	5	-	2	137	137	-	41,721	3	288
T O T A L			6,288	358	5,189	5,32,193	5,04,974	27,219	16,18,94,478	741	36,683

Table No. 19

Industrywise distribution of working factories according to working strength
in Greater Bombay for the year - 1975

Sr No	Major Group (2 digitd) of industries.	In- du- st- ry co- de No.	Less than 10 workers		10 to 19 workers		20 to 49 workers		50 to 99 workers		100 to 499 workers		500 to 999 workers		1000 to 4999 workers		5000 & above workers	
			A	B	A	B	A	B	A	B	A	B	A	B	A	B	A	B
			4	5	6	7	8	9	10	11	12	13	14	15	16	17	18	19
1	Forestry and Logging	05	1	4	3	43	2	65	3	-	-	-	-	-	-	-	-	-
2	Other Mining.	19	-	-	-	-	1	20	1	82	-	-	-	-	-	-	-	-
3	Manufacturing of Food products.	20-21	51	374	122	1,654	60	1,832	31	2,075	22	3,759	1	588	3	3,789	-	-
4	Manufacture of Beverages and tobacco and tobacco products.	22	3	18	2	31	1	43	3	257	2	573	4	3,034	-	-	-	-
5	Manufacture of Cotton Textiles.	23	32	191	44	577	54	1,613	22	1,349	17	3,507	4	2,849	46	1,17,514	9	58,811
6	Manufacture of Wool, Silk, and synthetic fibre textiles.	24	39	296	80	1,088	103	3,232	43	3,395	71	14,463	6	3,829	5	5,859	-	-
7	Manufacture of Jute, Hemp, and Mesta Textiles.	25	-	-	1	10	1	30	-	-	-	-	-	-	-	-	-	-
8	Manufacture of Textile products, (includ- ing wearing Apparel other than foot wear.)	26	28	212	93	1,301	93	2,998	58	3,880	29	5,830	6	4,443	1	2,578	-	-

	10	2	3	4	5	6	7	8	9	10	11	12	13	14	15	16	17	18	19
9. Mfg. of wood and wood products, furniture and fixtures.	27	21	141	56	760	31	893	8	523	6	1,107	-	-	-	-	-	-	-	-
10. Mfg. of paper and paper products, printing, publishing & Allied industries.	23	130	931	225	3,002	167	5,113	45	3,063	43	7,863	1	793	2	2,322	-	-	-	-
11. Mfg. of Leather & Fur products (Except Repair)	29	8	53	13	184	13	376	2	145	3	613	-	-	-	-	-	-	-	-
12. Mfg. of Rubber, Plastic, petroleum & Coal products.	30	106	713	200	2,772	149	4,345	27	1,984	29	5,649	4	2,655	3	4,467	-	-	-	-
13. Mfg. of Chemicals & chemical products (except products of petroleum and coal)	31	48	342	115	1,626	132	4,118	54	3,770	74	15,489	9	6,425	8	12,499	-	-	-	-
14. Mfg. of Non-Metallic Mineral products.	32	43	313	58	836	59	1,668	23	1,532	28	6,132	4	2,561	2	2,613	-	-	-	-
15. Basic Metal & Alloys industries.	33	23	148	79	1,131	76	2,416	34	2,341	31	6,563	5	3,395	2	3,892	-	-	-	-
16. Mfg. of Metal products & parts except machinery & Transport Equipment.	34	189	1,337	337	4,539	206	6,206	70	4,807	41	7,739	5	3,712	4	8,037	-	-	-	-

: 47 :

	10	2	3	4	5	6	7	8	9	10	11	12	13	14	15	16	17	18	19
17. Mfg. of Machinery Machine tools & parts except elec- trical machinery.	35	116	823	249	3,346	167	4,931	39	2,850	55	12,002	6	3,656	3	5,944	-	-	-	-
18. Mfg. of Electri- cal machinery, Apparatus, Appli- ances & supplies and parts.	36	62	440	125	1,702	137	4,273	51	3,390	23	5,872	3	5,757	7	12,146	-	-	-	-
19. Mfg. of Transport Equipment & parts.	37	22	140	47	666	34	1,019	13	1,325	13	3,198	5	3,069	6	12,667	4	24,303	-	-
20. Other Mfg. Indu- stries.	38	40	272	105	1,437	66	1,973	24	1,641	19	4,575	1	534	1	1,907	-	-	-	-
21. Electricity	40	4	32	7	94	4	126	1	70	2	406	1	517	-	-	-	-	-	-
22. Gas and Steam	41	-	-	-	-	-	-	1	73	1	177	2	1,262	-	-	-	-	-	-
23. Water Works & supply.	42	-	-	5	73	3	70	1	73	-	-	-	-	-	-	-	-	-	-
24. Construction	50	-	-	-	-	1	46	-	-	-	-	-	-	-	-	-	-	-	-
25. Wholesale trade in fuel, light, chemicals, per- fumery, Ceramic and glass.	61	1	5	-	-	-	-	-	-	1	219	-	-	-	-	-	-	-	-
26. Wholesale trade in wood, paper, other fabrics, skins & inedible oils.	62	-	-	1	13	1	39	3	216	-	-	-	-	-	-	-	-	-	-
27. Wholesale trade in miscellaneous Mfg.	64	-	-	-	-	1	22	-	-	-	-	-	-	-	-	-	-	-	-

: 48 :

1	2	3	4	5	6	7	8	9	10	11	12	13	14	15	16	17	18	19
23. Retail trade in others	68	-	-	-	-	-	-	-	1	58	-	-	-	-	-	-	-	-
29. Land transport	70	-	-	-	-	-	1	25	-	-	-	-	-	-	-	-	-	-
30. Water transport.	71	-	-	-	-	-	1	44	-	-	-	-	-	-	-	-	-	-
31. Air Transport	72	1	9	-	-	-	1	44	-	-	1	384	-	-	2	2,767	-	-
32. Services incidental to transport such as packing.	73	-	-	-	-	-	-	-	-	-	1	233	-	-	-	-	-	-
33. Storage and warehousing.	74	-	-	1	18	1	48	1	79	-	-	-	-	-	-	-	-	-
34. Communications.	75	-	-	-	-	-	1	27	-	-	-	-	-	-	-	-	-	-
35. Real Estate & business services.	82	-	-	-	-	-	2	47	1	80	-	-	-	-	-	-	-	-
36. Sanitary Services.	91	-	-	1	10	5	144	3	204	1	110	-	-	-	-	-	-	-
37. Educational, Scientific & Research Services.	92	-	-	-	-	-	1	40	-	-	-	-	-	-	-	-	-	-
38. Recreational & cultural services.	95	1	9	4	55	5	172	4	283	4	525	-	-	-	-	-	-	-
39. Personal Services.	96	3	21	5	63	1	25	3	191	4	620	-	-	-	-	-	-	-
40. Repair Services	97	14	107	17	243	28	977	17	1,123	20	3,587	-	-	1	1,734	-	-	-
41. International & other Extra Territorial Bodies.	98	-	-	-	-	1	22	1	83	4	-	-	-	-	-	-	-	-

49 :

	0	2	03	04	05	06	07	08	09	010	011	012	013	014	015	016	017	018	019
42. Services not else where classified.		99	1	3	-	-	1	25	1	95	2	297	-	-	-	-	-	-	-
43. Activities not adequately defined (other than those in X0.)		XI	-	-	1	18	2	-	-	-	-	-	-	-	-	-	-	-	-
Total		987	6,939	1,996	27,297	1,616	49,107	596	41,052	554	1,11,498	72	49,079	96	2,00,705	13	33,119		

Table No. 20

Distribution of factories according to No. of days worked in Gr. Bombay

District for the year 1975

Sr. No.	Major Group of Industries in 2 digitd.	Indu- stri- es Code No.	No. of days not reported		60 days or less		61 to 120 days		121 to 180 days		181 to 240 days		241 to 300 days		More than 300 days.	
			A	B	A	B	A	B	A	B	A	B	A	B	A	B
			4	5	6	7	8	9	10	11	12	13	14	15	16	17
1.	Activities not adequately defined (other than those in X0.)	XI	-	-	-	-	-	-	-	-	-	-	1	13	-	-
2.	Forestry & Logging	05	-	-	-	-	-	-	-	-	-	-	1	16	4	82
3.	Manufacture of food products.	20-21	-	-	1	47	-	-	5	303	9	210	44	1,639	199	10,335
4.	Mfg. of Beverages, Tobacco & Tobacco products.	22	-	-	-	-	-	-	-	-	-	-	4	1,703	10	2,248
5.	Mfg. of Cotton Textiles.	23	-	-	1	36	4	3	1	60	5	126	61	37,269	123	1,40,235
6.	Mfg. of Wool, Silk, & synthetic fibre textiles.	24	-	-	-	-	4	53	7	202	8	122	143	19,143	150	20,771
7.	Mfg. of Jute, Hemp, & Jute Textiles.	25	-	-	-	-	-	-	-	-	-	-	1	30	1	10
8.	Mfg. of Textile products (including wearing Apparel other than foot wear).	26	-	-	-	-	1	22	5	105	9	233	112	7,323	130	10,873

-51-

	1	2	3	4	5	6	7	8	9	10	11	12	13	14	15	16	17
9. Mfg. of wood & wood products, furniture & Fixtures.	27	-	-	-	-	-	-	-	-	-	-	2	27	46	1,214	61	1,478
10. Mfg. of paper & paper products & printing, publishing & Allied industries.	28	-	-	-	-	-	1	16	4	153	5	63	318	13,156	211	7,816	
11. Mfg. Leather & Leather & Fur products (Except repair)	29	-	-	-	-	-	1	7	1	10	-	-	12	326	20	899	
12. Mfg. of Rubber, Plastic petroleum & coal products.	30	-	-	1	17	1	37	2	30	10	184	274	13,653	175	6,967		
13. Mfg. of Chemicals & chemical products (except products of petroleum and coal)	31	-	-	-	-	-	1	20	3	211	8	1,039	226	22,220	160	19,315	
14. Mfg. of Non-Metallic Mineral products .	32	-	-	2	40	1	8	5	185	8	450	68	3,117	94	9,658		
15. Basic Metal & Alloys Industries.	33	-	-	-	-	-	1	196	3	49	12	243	130	6,581	83	12,115	
16. Mfg. of Metal products & parts except machinery & transport equipment	34	-	-	-	-	-	3	42	6	75	16	332	508	21,575	218	10,431	
17. Mfg. of Machinery Machine tools & parts except Electrical machinery.	35	-	-	1	20	4	227	8	192	7	95	365	20,005	183	11,162		

100

1	2	3	4	5	6	7	8	9	10	11	12	13	14	15	16	17
18.	Mfg. of Electrical Machinery, Apparatus, Appliances & supplies & parts.	36	-	-	1	28	1	14	6	59	11	510	245	13,330	126	17,969
19.	Mfg. of transport, equipment and parts.	37	-	-	-	-	1	31	1	8	2	32	95	33,811	40	9,991
20.	Other Manufacturing Industries	38	-	-	1	10	-	-	3	39	3	91	135	8,656	81	2,784
21.	Electricity	40	-	-	-	-	-	-	-	-	-	-	2	164	8	815
22.	Gas and Steam	41	-	-	-	-	-	-	-	-	-	-	-	-	3	943
23.	Water works & supply	42	-	-	-	-	-	-	-	-	-	-	-	-	6	108
24.	Construction.	50	-	-	-	-	-	-	-	-	-	-	1	46	-	-
25.	Wholesale trade in fuel, light, chemicals, perfumery, ceramics & Glass.	61	-	-	-	-	-	-	-	-	-	-	1	219	-	-
26.	Wholesale Trade in Wood, paper, other Fabrics, skins & inedible oils.	62	-	-	-	-	-	-	-	-	-	-	3	102	1	71
27.	Wholesale trade in Miscellaneous Mfg.	64	-	-	-	-	-	-	-	-	-	-	-	-	1	22
28.	Retail trade in others	68	-	-	-	-	-	-	-	-	-	-	1	58	-	-
29.	Land Transport.	70	-	-	-	-	-	-	-	-	-	-	-	-	1	25
30.	Water transport.	71	-	-	-	-	-	-	-	-	-	-	-	-	1	44
31.	Air Transport.	72	-	-	-	-	-	-	-	-	-	-	3	3,151	2	53
32.	Services incidental to transport such as packing.	73	-	-	-	-	-	-	-	-	1	233	-	-	-	-

-153-

	1	2	3	4	5	6	7	8	9	10	11	12	13	14	15	16	17
33. Storage & warehousing	74	-	-	-	-	-	-	-	-	-	-	-	-	1	18	2	127
34. Communications	75	-	-	-	-	-	-	-	-	-	-	-	-	1	27	-	-
35. Real Estate & Business Services.	82	-	-	-	-	-	-	-	-	-	-	-	-	3	127	-	-
36. Sanitary Services.	91	-	-	-	-	-	-	-	-	-	-	-	-	-	-	6	256
37. Education, Scientific & Research services.	92	-	-	-	-	-	-	-	-	-	-	-	-	1	40	-	-
38. Recreational & cultural services.	95	-	-	-	-	-	-	-	-	-	-	-	-	4	264	10	539
39. Personal Services.	96	-	-	-	-	-	-	-	-	-	-	-	-	1	10	14	900
40. Repair Services	97	-	-	-	-	-	-	-	-	-	1	120	44	5,936	30	1,239	
41. International & other Extra Territorial bodies	98	-	-	-	-	-	-	-	-	-	-	-	2	105	-	-	
42. Services not elsewhere classified.	99	-	-	-	-	-	-	-	-	-	-	-	-	1	8	1	129
TOTAL		-	-	8	198	21	676	60	1,681	117	4,115	2,328	2,25,115	2,155	3,00,408		

Table No.21.

(Annual Survey of Industries 1975-76 and 1976-77)

Important Characteristics of Industries in Greater Bombay District of Maharashtra State during 1975-76 and 1976-77.

(Rs. in Thousand)

Sr. No.	Industry Code	Description of the Industry	Fixed Capital	Working Capital	All Workers (No.)	All Employees (No.)	Wages to Workers.
1	2	3	4	5	6	7	8
1.	20 & 21	Manufacture of food products	17,93,47	13,96,52	12,801	19,234	16,01,76
2.	22	Manufacturing of Beverages, Tobacco and Tobacco products	6,29,64	14,86,99	3,098	4,522	2,77,79
3.	23	Manufacturing of Cotton Textiles.	1,11,61,93	92,52,97	1,69,828	1,95,319	1,13,34,95
4.	24	Manufacturing of wool, silk and synthetic fibre textiles.	24,59,22	18,04,64	29,547	35,891	14,46,32
5.	25	Manufacturing of Jute, Hemp and Merta Textiles.	1,99	7,77	36	52	1,12
6.	26	Manufacturing of Textile Products, (including wearing Apparel other than Foot wear)	11,27,69	10,52,81	18,475	22,718	16,85,12
7.	27	Manufacturing of wood & wood products Furniture & Fixture.	1,31,92	2,67,23	2,281	2,909	1,26,93
8.	28	Manufacturing of paper and paper products & printing, publishing and Allied Industries.	27,66,14	19,77,61	19,654	26,167	10,20,43

		5	6	7	8	
29	Mfg. of Leather and Leather & Fur products (except repair)	1,22	1,51,61	2,808	3,328	30,533
30	Mfg. of Rubber, Plastic, Petroleum and Coal products	62,13	52,64,58	18,282	24,691	,28,54
31	Mfg. of chemicals & Chemical products (except products of petroleum and coal)	1,91,23	1,84,72,66	33,616	53,480	,56,75
32	Mfg. of Non Metallic mineral products.	12,7	9,15,17	12,172	14,998	,19,57
33	Basic metal and alloys industries.	34,7	33,09,17	22,194	29,664	1,48,90
34	Mfg. of metal products and parts except machinery and transport equipment.	36,16,4	31,48,57	2,84,46	37,819	1,34,77
35	Mfg. of machinery, machine tools and parts except Electric machinery	37,11,9	40,10,68	23,603	34,492	1,67,65
36	Mfg. of Electrical machinery Apparatus, Appliance and supplies and parts.	52,43,8	39,68,75	26,185	37,278	1,64,26
37	Mfg. of transport equipment and arts.	32,04,96	7,58,83	25,061	33,754	1,65,35
38	Other Manufacturing industries	10,59,11	9,64,52	9,636	12,480	571,72

1
9

1	2	3	4	5	6	7	8
19.	40	Electricity	1,16,83,67	13,30,52	2,853	7,043	2,47,31
20.	41	Gas & Steam	5,34,19	66,42	778	1,196	56,83
21	42	Water works and supply	62,93	8,20	188	213	11,23
22.	44	Storage and ware housing	36,03	18,58	67	109	4,30
23.	94	Sanitary services.	75,87	4,14	348	391	23,15
24	95	Recreational and Cultural Services	2,35,40	2,17,41	1,278	1,772	78,80
25.	96	Personal Services.	1,23,00	25,98	1,041	1,201	48,40
26.	97	Repair Services.	24,90,57	28,00,55	16,692	20,778	12,75,94
		T O T A L	8,24,35,32	6,84,82,80	4,80,970	6,21,495	3,10,36,43

Details may not add upto total due to rounding.

Note :- Data is provisional

Source:- Data collected by N.S.S.D. (Govt. of India) and compiled by Directorate of Economics & Statistics, (Government of Maharashtra).

Table No. 21. Contd/-....

Sr. No.	Industry Code.	Description of the Industry	Total Enrolments.	Total input	Total Output	Value Added.
1	2	3	9	10	11	12
1.	20 & 21	Manufacture of food products.	11,41,60	2,83,45,89	3,05,68,74	19,94,11
2.	22	Mfg. of Beverages, Tobacco and Tobacco products.	5,29,99	40,31,96	51,87,66	10,65,00
3.	23	Mfg. of Cotton Textiles.	1,47,17,87	4,86,52,96	6,91,36,76	1,92,06,22
4.	24	Mfg. of wool, silk and synthetic fibre textiles.	20,51,46	1,33,49,39	2,29,56,87	36,56,71
5.	25	Mfg. of Jute, Hemp and Mesta Textiles.	2,33	97,23	1,04,43	6,36
6.	26	Mfg. of Textiles products, (including wearing apparel other than foot wear)	10,11,71	1,00,23,78	12,13,931	19,57,44
7.	27	Mfg. of wood & wood products furniture & fixture	1,96,44	6,98,02	9,75,90	2,64,60
8.	28	Mfg. of paper and paper products & printing, publishing and Allied industries.	16,99,19	81,89,78	1,15,11,60	30,28,58

11	2	3	9 4 9	10	11 6	12
9	29	Mfg. of Leather and Leather & Fur Products (except repair)	1,83,23	13,07,01	16,18,81	2,97,30
10.	30	Mfg. of Rubber, Plastic, Petroleum and Coal products.	2,21,11,12	4,14,11,55	4,67,51,40	45,34,16
11.	31	Mfg. of chemicals & chemical products (except products of petroleum and coal)	74,84,17	6,39,48,05	8,60,36,51	2,02,75,55
12.	32	Mfg. of Non metallic mineral products.	9,35,99	38,27,81	53,19,92	13,39,62
13.	33	Basic metal and alloys industries.	24,95,75	1,71,74,51	2,10,00,56	42,44,19
14.	34	Mfg. of metal products and parts except machinery and transport equipment.	29,82,50	1,55,02,95	2,16,91,01	57,93,37
15.	35	Mfg. of machinery, machine tools and parts except Electric machinery.	28,91,59	1,67,21,43	2,33,22,84	61,53,94
16.	36	Mfg. of Electrical machinery Apparatus, Appliance and supplies and parts.	34,15,37	2,00,55,84	2,74,93,63	63,89,35
17.	37	Mfg. of transport equipment and arts.	34,86,09	1,21,62,30	1,74,93,17	49,84,03
18.	38.	Other Manufacturing industries.	8,73,00	40,12,86	62,84,77	21,46,39

1	2	3	9	10	11	12
19.	40	Electricity	9,74,48	1,14,20,34	1,49,51,43	31,33,10
20.	41	Gas and Steam	1,12,69	6,42,76	7,98,88	1,10,42
21.	42	Water works and supply	13,74	47,20	5,75,60	5,23,11
22.	74	Storage and ware housing	67,97	27,20	56,00	25,11
23.	91	Sanitary services.	23,25	40,64	73,89	29,50
24.	95	Recreational and Cultural Services.	1,36,57	2,49,47	5,41,94	2,66,03
25.	96	Personal Services.	64,84	1,83,04	2,91,95	95,70
26.	97	Repair Services.	10,66,64	43,58,37	72,19,38	21,06,77
		T O T A L	5,25,34,42	35,24,82,54	43,49,58,02	9,42,11,69

Details may not add upto total due to rounding.

Note:- Data is provisional

Source:- Data collected by N.S.S.D. (Govt. of India) and compiled by Directorate of Economics & Statistics, (Government of Maharashtra.)

Table No. 21.

A.S.I. - 1971.

Important Characteristics of Industries in Gr. Bombay District of Maharashtra State.

(Rs. in '000)

Sr No	Industry Code No.	Description of the industry	Fixed Capital	Capital working	All workers (No.)	All employees (No.)	Wages to workers.
1	2	3	4	5	6	7	8
1.	201	Slaughtering, preparation and preserving of meat.					
	203	Canning and preserving of fruits and vegetables.	8,098	2,565	288	376	493
	204	Canning and preserving of fish and other sea foods.					
2.	205	Mfg. of grain mill products.	5,200	7,445	1,101	1,391	2,368
3.	206	Mfg. of bakery products.	25,606	19,194	3,239	4,339	10,693
4.	208	Mfg. of Cocoa, chocolate and sugar confectionery.	1,909	1,472	278	378	536
5.	209	Mfg. of miscellaneous food preparations.	47,118	40,990	4,837	6,468	14,209
6.	214	Soft drinks and carbonated water industries.	13,902	4,863	823	1,099	2,999
7.	220	Tobacco Manufactures.	36,809	58,458	2,577	3,397	14,789
8.	231	Spinning weaving and finishing of textiles.	10,30,264	5,84,029	1,85,820	2,10,742	7,25,094

61

Statement No. 21. contd/-..

Sr.No.	Industry Code. No.	Description of the industry	Total Emoluments.	Total in put	Total Output	Value added.
1	2	3	9	10	11	12
1.	201	Slaughtering, preparation and preserving of meat.				
	203	Canning and preserving of fruits and vegetables.	937	7,132	7,913	206
	204	Canning and preserving of fish and other sea foods.				
2.	205	Mfg. of grain mill products.	3,486	93,459	1,01,375	7,304
3.	206	Mfg. of bakery products.	17,714	1,38,730	1,79,353	37,798
4.	208	Mfg. of Cocoa, Chocolate, and sugar confectionery.	840	6,531	8,314	1,601
5.	209	Mfg. of miscellaneous food preparations.	23,514	7,99,398	8,57,251	51,833
6.	214	Soft drinks and carbonated water industries.	6,036	38,907	58,025	17,956
7.	220	Tobacco Manufactures.	28,450	3,62,815	4,90,882	1,22,248
8.	231	Spinning weaving and finishing of textiles.	9,27,303	25,10,052	49,77,456	23,06,902

Statement No. 21 - contd/-..

1	2	3	4	5	6	7	8
9	232	Knitting Mills	12,587	12,942	2,351	2,937	6,231
10	233	Cardage, rope and twine industries.	514	165	160	190	330
11	239	Mfg. of textiles not elsewhere classified.	14,015	15,409	2,489	3,048	5,741
12	241	Mfg. of footwear	13,647	3,821	2,160	2,683	3,298
	*242	Repair of footwear					
13	243	Mfg. of wearing apparel (except footwea)	20,316	23,142	5,335	6,572	13,335
14	251	Saw Mills, Planing and other wood mills.	633	4,024	441	541	996
15	252	Wooden and cane containers and cane small ware.	2,511	2,440	704	845	1,571
16	259	Mfg. of cork and wood products not elsewhere classified.	12,449	2,343	831	1,010	2,251
17	260	Mfg. of furniture and fixtures.	64,284	58,122	6,063	7,734	32,119
18	271	Mfg. of Pulp, paper and paper board.	60,630	33,070	5,262	6,384	14,146
19	280	Printing, publishing and Allied Industries.	1,80,606	83,072	64,370	24,593	66,150
20	291	Tanneries and leather finishing plants	1,239	3,917	240	716	1,573
21	293	Mfg. of leather products except foot wear and other wearing apparel.	433	949	89	125	252
22	300	Mfg. of Rubber products.	1,03,024	89,125	8,494	10,305	38,418

Table No. 21. contd/-..

1	2	3	9	10	11	12
9.	232	Knitting Mills.	10,011	1,02,250	1,23,356	18,470
10.	233	Cordage, rope and twine industries.	386	2,512	3,190	635
11.	239	Mfg. of textiles not elsewhere classified.	10,490	1,27,644	1,52,668	23,497
12.	241	Mfg. of footwear	5,502	64,973	80,747	13,305
	242	Repair of footwear				
13.	243	Mfg. of wearing apparel (except footwear)	19,642	1,19,537	1,59,185	37,185
14.	251	Saw Mills, planing and other wood mills.	1,315	7,785	10,396	2,531
15.	252	Wooden and cane containers and cane small ware.	2,189	11,552	14,964	3,205
16.	259	Mfg. of cork and wood products not elsewhere classified.	3,532	16,231	25,723	8,560
17.	260	Mfg. of furniture and fixture.	48,573	1,65,020	2,57,302	84,584
18.	271	Mfg. of Pulp, paper and paper board.	4,33,818	1,56,234	2,00,926	39,690
19.	280	Printing, Publishing and Allied Industries.	1,05,872	2,94,737	4,67,460	1,58,311
20.	291	Tanneries and leather finishing plants.	2,168	20,106	23,047	2,561
21.	293	Mfg. of leather products except footwear and other wearing apparel.	384	4,578	5,375	723
22.	300	Mfg. of Rubber products.	63,343	4,87,339	6,68,568	1,65,655

1	2	3	4	5	6	7	8
23.	311	Basic industrial chemical including fertilizers)	3,15,095	1,76,792	6,669	9,724	25,564
24.	312	Vegetable and animal oils and fats (except edible oils)	1,549	1,133	124	177	351
25.	313	Mfg. of paints, varnishes and lacquers.	17,583	38,827	1,542	2,327	6,629
26.	319	Mfg. of miscellaneous chemical products.	4,09,190	7,73,299	27,022	35,972	1,48,725
27.	321	Petroleum refineries (Motor and aviation spirit, diesel oil, fuel oil diverse hydro carbon oils and their blends including synthetic fuels, lubricating oils, etc.) Kerosene Oil	4,35,744	2,33,016	1,764	2,350	1,70,084
28.	329	Mfg. of miscellaneous products of petroleum and coal	6,682	1,009	355	428	1,537
29.	331	Mfg. of structural clay products.	9,230	4,331	4,486	4,784	4,253
30.	332	Mfg. of glass and glass products	41,568	751	6,781	7,703	20,074
31.	333	Mfg. of pottery, china and earthen ware	12,166	2,282	522	622	1,457
	334	Mfg. of Cement (hydraulic)					
32.	339	Mfg. of non-metallic mineral products not elsewhere classified	39,393	46,406	4,982	6,318	18,302
33.	341	Iron and steel basic industries.	1,49,582	1,34,722	13,640	18,738	53,520

Table No. 21. contd/-..

1	2	3	9	10	11	12
23.	311	Basic industrial chemical including fertilizers.	65,186	4,58,964	7,75,656	2,75,027
24.	312	Vegetable and animal oils and fats (except edible oils)	709	75,263	1,03,758	28,179
25.	313	Mfg. of paints, varnishes and lacquers.	15,114	1,12,039	1,57,894	43,418
26.	319	Mfg. of miscellaneous chemical products.	4,44,276	21,28,683	30,44,277	8,65,270
27.	321	Petroleum refineries (motor and aviation spirit, diesel oil, kerosene oil, fuel oil, diverse hydro carbon oils and their blends including synthetic fuels, lubricating oils, etc.)	36,814	7,74,190	9,70,382	1,66,142
28.	329	Mfg. of miscellaneous products of petroleum and coal.	2,916	3,897	11,494	6,930
29.	331	Mfg. of structural clay products.	6,208	13,104	22,073	7,913
30.	332	Mfg. of glass and glass products.	24,950	80,866	1,25,747	38,454
31.	333	Mfg. of pottery, china and earthen ware.	2,618	42,938	51,988	8,091
	334	Mfg. of cement. (hydraulic)				
32.	339	Mfg. of non-metallic mineral products not elsewhere classified.	30,409	78,737	1,37,687	53,669
33.	341	Iron and steel basic industries.	87,754	4,92,947	6,70,195	1,59,732

1	2	3	4	5	6	7	8
34.	342	Non-Ferrous basic metal industries.	65,111	71,950	6,464	8,648	26,331
35.	350	Mfg. of Metal products except Machinery and transport equipment.	2,45,444	2,43,197	24,900	31,628	87,615.
36.	360	Mfg. of Machinery except electrical machinery	3,04,473	3,03,987	24,273	33,473	94,757
37.	370	Mfg. of Electrical Machinery, Apparatus Appliances and supplies.	2,78,680	3,58,189	28,077	3,72,119	1,08,084
38.	381	Ship building and repairing.	10,731	10,461	2,862	3,448	16,443
39.	382	Mfg. of rail-road equipment.	38,216	18,871	15,757	17,971	62,106
40.	383	Mfg. of motor vehicles.	1,27,554	51,683	14,115	18,966	76,270
41.	384	Repair of motor vehicles	1,25,690	8,089	7,156	8,653	28,072
42.	385	Mfg. of motor cycles and bicycles.	48,756	8,529	4,255	5,392	20,194
43.	386	Mfg. of air craft	50,548	2,58,698	2,360	3,786	20,719
44.	389	Mfg. of transport equipment not elsewhere classified.	4,710	3,264	831	1,139	2,129
45.	391	Mfg. of professional and scientific measuring and controlling instruments	18,814	15,788	1,868	2,482	4,800
46.	392	Mfg. of photographic and optical goods.	20,560	21,756	1,079	1,556	5,348
47.	393	Mfg. of watches and clocks.	9,702	8,354	2,167	2,591	6,175

Table No. 21. contd/-..

1	2	3	4	5	6	7	8	9	10	11	12
34.	342	Non-ferrous basic metal industries									
			44,972	4,33,688	5,53,906	1,12,923					
35.	350	Mfg. of Metal products except Machinery and transport Equipment.	1,39,610	8,00,236	11,36,389	3,10,029					
36.	360	Mfg. of Machinery except electrical machinery,	1,71,777	8,10,395	11,90,435	3,45,100					
37.	370	Mfg. of Electrical Machinery, Apparatus Appliances and supplies,	1,89,653	9,68,036	14,98,230	4,95,220					
38.	381	Ship building and repairing	23,814	17,388	34,573	16,458					
39.	382	Mfg. of rail-road equipment,	80,954	54,222	1,43,559	86,130					
40.	383	Mfg. of Motor Vehicles.	1,29,762	6,29,956	10,21,959	3,76,823					
41.**	384	Repair of motor vehicles.	38,567	1,26,852	1,73,451	42,571					
42.	385	Mfg. of motor cycles and bicycles.	30,666	1,46,843	1,95,195	41,697					
43.	386	Mfg. of aircrafts.	46,264	54,810	1,13,093	51,891					
44.	389	Mfg. of transport equipment not elsewhere classified.	3,417	15,963	22,512	6,141					
45.	391	Mfg. of professional and scientific measuring and controlling instruments.	8,929	54,505	76,483	19,482					
46.	392	Mfg. of photographic and optical goods.	10,758	31,179	59,209	25,691					
47.	393	Mfg. of watches and clocks.	9,266	22,838	38,210	14,090					

1	2	3	4	5	6	7	8
48.	394	Mfg. of Jewellery and related articles.	16,740	66,756	2,223	2,725	12,403
49.	395	Mfg. of musical instruments.	4,10,772	76,572	16,894	21,022	37,661
	396	Mfg. industries not elsewhere classified.					
50.	511	Electric light and power (generation transmission and distribution of electric energy.)	43,92,360	4,34,119	13,885	28,654	75,581
51.	512	Gas Manufacture and distribution.	23,484	7,601	1,113	1,629	4,800
52.	521	Water supply (including collection distribution, purification and supply- ing of water and water works.)	1,889	538	189	227	568
53.	522	Sanitary services.	6,999	253	333	378	1,220
54.	841	Motion picture production.	9,451	6,523	1,163	1,445	3,020
55.	854	Laundries.	12,703	477	1,308	1,580	3,737

* Repair includes renovation second hand shoes purchased and repaired on own accounts will be included here.

** Repair includes renovation second-hand trucks and vehicles purchased and repaired on own account will be included here.

£ Includes motor vehicle parts and accessories such as engine, brakes, clutches, axles, gears, transmissions, wheels and frames. Tyres and tubes automobile glass and electrical equipment are excluded.

Table No. 21. contd/-..

1	2	3	9	10	11	12
48.	394	Mfg. of Jewellery and related articles.	15,392	21,928	41,730	18,990
49.	395	Mfg. of musical instruments.	58,713	3,61,750	4,76,138	95,476
	396	Mfg. industries not elsewhere classified }				
50.	511	Electric light and power (generation transmission and distribution of electric energy.)	1,58,495	1,14,014	13,36,864	4,99,037
51.	512	Gas manufacture and distribution	7,876	48,358	56,599	4,087
52.	521	Water supply (including collection, distribution, purification and supplying of water and water works.)	734	2,121	3,033	949
53.	522	Sanitary services.	1,591	1,172	3,365	1,659
54.	841	Motion picture production.	6,013	9,098	16,414	6,238
55.	854	Laundries.	4,987	6,318	13,750	6,317

Table No. 22

Employment Exchange statistics in Gr. Bombay during the year 1975-76 & 76-77

Sr. No.	Name of the employment exchange.	Year	No. of Registration.	No. of vacancies notified	No. of placements	No. of candidates on the live register at the end of the year.
1.	2.	3.	4.	5.	6.	7.
1.	Regional Employment Exchange, Bombay	1975-76	48,052	13,082	3,873	75,985
		1976-77	53,642	11,339	4,593	79,538
2.	Sub-Regional Employment Exchange, Bombay.	1975-76	54,642	14,395	5,547	71,784
		1976-77	46,270	10,197	6,388	97,753
3.	Employment Exchange, Ghatkopar.	1976-77	6,262	5,438	966	19,296
	<u>Total 1975-76</u>		1,02,694	27,477	9,420	1,47,769
	<u>Total 1976-77</u>		1,06,174	26,974	11,947	1,96,587

Source: - Office of the Director of Employment, Greater Bombay.

Table No. 23

Occupational distribution of placements in Employment Exchanges in
Gr. Bombay during the years 1975-76 & 1976-77

Sr. No.	Name of the Employment Exchange.	Year	Placements according to National Classification.								Total
			Professional Tech. and related worker	Admn. Executive and Managerial worker	Clerical and related workers	Sales workers	Service workers	Farmers Fishermen Hunters, Loggers and related workers.	Production & Related workers, transport equipment operators and laborers.	Workers not classified by occupation.	
1	2	3	4	5	6	7	8	9	10	11	12
1.	Regional Employment Exchange, Bombay.	75-76	49	6	1,816	24	40	4	1,846	88	3,873
		76-77	25	-	2,484	5	-	5	1,722	357	4,598
2.	Sub-Regional Employment Exchange, Bombay.	75-76	190	-	367	-	403	12	4,575	-	5,547
		76-77	395	-	755	-	1,187	25	4,026	-	6,388
3.	Employment Exchange, Ghatkopar.	76-77	20	-	-	-	-	-	946	-	966
<u>Total</u>		75-76	239	6	2,183	24	443	16	6,421	88	9,420
<u>Total</u>		76-77	440	-	3,239	5	1,187	30	6,694	357	11,952

Source:- Office of the Director of Employment, Gr. Bombay.

Table No.

Employment in Different Industries in Gr. Bombay during 1975-76.

(In Lakhs)

Sr No	Description of Industry	Number of Employees.					Total
		State Govt.	Central Govt.	Quasi Govt.	Local Bodies.	Private	
1	2	3	4	5	6	7	8
1.	Agriculture.	-	-	-	-	-	-
2.	Mining & Quarrying	-	-	-	-	-	-
3.	Manufacturing.	0.02	0.20	0.61	0.02	4.96	5.81
4.	Construction	-	-	0.01	0.03	0.06	0.15
5.	Electricity, Gas, Water & Sanitary Service.	0.03	0.04	0.04	0.15	0.03	0.29
6.	Trade, Commerce & Miscellaneous	-	-	0.08	-	0.27	0.35
7.	Transport, Storage & Communications	0.01	1.39	0.43	0.22	0.06	2.11
8.	Financing, Insurance, Real Estate & Business Services.	-	-	0.56	-	0.27	0.83
9.	Community, Social & Personal Services	0.58	0.44	0.20	0.66	0.41	2.29
TOTAL		0.64	2.07	1.93	1.13	6.06	11.83

Source :- Office of the Director of Employment, Bombay.

Table No.

Employment in different industries in Greater Bombay as on 1976-77.

(In Lakhs)

Sr. No.	Description of Industry	No. of Employeés					Total
		State Govt.	Central Govt.	Quaki Govt.	Local Bodies	Private	
1.	2.	3.	4.	5.	6.	7.	8.
1.	Agriculture.	-	-	-	-	-	-
2.	Mining & Quarrying	-	-	-	-	-	-
3.	Manufacturing.	0.02	0.21	0.59	0.02	5.02	5.86
4.	Construction	0.03	0.04	0.24	0.13	0.03	0.27
5.	Electricity, Gas & Water & Sanitary Service.	-	-	0.01	0.08	0.06	0.15
6.	Trade, Commerce & Miscellaneous	-	-	0.09	-	0.26	0.35
7.	Transport, Storage and Communications.	0.61	1.48	0.43	0.23	0.06	2.21
8.	Financing, Insurance, Real Estate and Business Services.	-	-	0.58	-	0.27	0.85
9.	Community, Social and Personal Services	0.60	0.44	0.19	0.69	0.41	2.33
Total		0.66	2.17	1.93	1.15	6.11	12.02

Table No. 26.

Consumption of Electricity in Gr. Bombay during the
year 1975-76 & 1976-77.

S. No.	Item	1975-76	1976-77
1	2	3	4
I. Name of the source of Electric supply to Gr. Bombay District.			
1)	Steam		
	i) Trombay (in Million KWH)	20.20	19.89
2)	Oil	-	-
3)	Hydro		
	i) Khopoli	1.86	2.08
	ii) Bhivpuri	2.60	3.17
	iii) Bhira (in Million KWH)	9.17	8.08
4)	Nuclear	-	-
1. Energy sold to private Distribution to companies.			
	i) Quantity (in Million KWH)	57.26	63.96
	ii) Value (in Lakhs Rs.)	1,06.53	1,38.20
	iii) No. of companies (No.)	216	215
2. Energy sold to consumers other than companies			
	i) Quantity (in Million KWH)	20.06	23.07
	ii) Value (in Lakhs Rs.)	53,42.73	74,59.53
	iii) No. of consumers (No.)	9,55,309	10,01,556
3. Energy sold to all consumers (Purpose-wise) (000 KWH)			
1.	Domestic light & small power	6.80	7.75
2.	Commercial light & small power	3.82	4.92
3.	Industrial power	8.84	10.09
4.	Public Lighting	47	51
5.	Traction	359	383
6.	Irrigation & dewatering	2	2
7.	Water works	31	31
8.	Miscellaneous (in million KWH)	29	6

Table No. 26 Contd./-76-

1	2	3	4
4. Total staff engaged in Electricity Deptt. (No.)		77,89	75,89
5. Total Income accruing to staff at item No. 4. (in lakhs)		4,771,52.53	4,81,71.22

- Source :-
- 1) B.E.S.T.
 - 2) B.S.E.S. Co.,
 - 3) Tata Electric Companies.
 - 4) The Thane Electric Supply Col.,

Statement No. 27.

Statement Relating to Co-operative Societies in Gr. Bombay during the year 76-77.

(Rs. in Thousand)

Sr. No.	Type of Societies	Number	Membership.		Share Capital	Reserve and other funds.	Working capital	Loans Advance. (Rs.)		
			Socys.	Individuals				Short term	Medium term	Long term
	2	3	4	5	6	7	8	9	10	11
1.	Primary Agril. Credit. Socys.	9	3,356	-	133	127	583	30	81	2
2.	Urban Banks	86	4,47,146	-	1,06,528	83,224	14,09,850	2,51,929	3,63,914	-
3.	Salary Earners socys.	894	12,88,366	-	2,72,526	39,585	5,31,176	2,90,300	-	-
4.	Urban Credit socys	274	7,11,550	-	6,299	2,801	18,788	8,538	-	-
5.	M.S.C. Bank	1	6,00,000	-	1,29,727	3,22,825	33,17,833	14,74,162	77,54,041	4,81,45,029
6.	Dist. Central Co-op. Bank	1	749	186	37	619	60	176	6	-
7.	Land Dev. Co-op. Bank.	1	7,000	-	1,28,727	71,873	28,45,246	-	-	1,769
Total		1,266	30,58,167	186	6,43,977	5,21,224	81,23,536	20,25,135	81,18,042	4,81,45,800

77

Statement No. 27 Contd/-
1976-77

- 2 -

Sr No	Type of Societies.	Loans	(Rs.)	Costs of Management		Employment No.	
		Out-stand- ing.	Over- dues.	Salary	Other expenses	For Pro- duction	For Admn.
1	2	12	13	14	15	16	17
1.	Primary Agril, Credit Socys.	118	31	52	82	-	-
2.	Urban Banks.	55,737	61,653	3,16,114	55,232	-	-
3.	Salary Earners Socys.	2,76,460	357	5,641	2,740	-	-
4.	Urban Credit Socys.	8,132	238	3,350	435	-	-
5.	M.S.C Bank	-	-	233	2,304	N.A.	N.A.
6.	Dist. Central Co-op. Bank	176	-	3	26	N.A.	N.A.
7.	Land Dev. Co-op. Bank	16,127	3,764	271	1,925	N.A.	N.A.
Total		3,56,750	66,043	3,25,664	62,744	N.A.	N.A.

Source :- District Deputy Registrar of Co-operative Societies, Bombay.

Table No. 27.

Statement relating to co-operative societies in Gr. Bombay During the year 75-76

(Rs. in Thousand)

Sr No	Type of Societies	Number	Memberships		Share capital	Reserve and Other funds.	Working Capital	Loan Advance (Rs.)		
			Socys.	Individual				Short Term	Medium Term	Long Term
1	2	3	4	5	6	7	8	9	10	11
1.	Primary Agril. Credit Societies	9	2,881	-	129	111	270	9	109	-
2.	Urban Bank	83	4,73,636	-	97,103	62,706	12,00,584	2,18,755	3,38,322	-
3.	Salary Earners socys	875	12,18,636	-	2,59,573	37,773	5,01,020	2,76,460	-	-
4.	Urban Credit socys	284	67,767	-	6,007	2,741	17,754	8,132	-	-
5.	M.S.C. Bank	1	6	-	1,19,656	3,20,906	40,40,531	1,87,586	3,68,960	-
6.	Dist. Central Co-op. Bank	1	600	174	3,431	74	28,735	1,52,639	-	-
7.	Land Dev. Co-op. Bank.	1	6,574	-	2,78,483	71,022	27,18,684	-	-	2,31,181
Total		1254	17,70,100	174	7,64,382	4,95,333	85,07,578	8,43,581	7,07,391	2,31,181
Contd/-		Loans (Rs.)		Cost of Management		Employment No.				
		Out Standing	Over dues	Salaries	Other expenses	For Production	For Admn.			
1.	9	28	97	102	-	-	-			
2.	5,57,137	47,626	24,426	18,340	-	-	-			
3.	2,76,460	344	5,371	2,595	-	-	-			
4.	8,132	238	1,285	414	-	-	-			
5.	22,446	78,375	28,998	2,33,057	-	-	-			
6.	13,434	248	232	1,548	-	-	-			
7.	16,82,146	2,77,581	26,017	1,97,076	-	-	-			
		24,59,764	4,04,400	86,426	4,53,132	-	-			

Source :- Dist. Deputy Registrar of Co-operative Societies, Bombay.

Statement regarding consumers co-operative societies in urban areas during 75-76

(Rs. in Lakhs)

Sr No	Type of Socys.	No. of societies.	Membership Socys.	No. of stores.	Share Capital	Reserve and other funds	Working capital	Value of goods purchased.	Value of goods sold.	Net profit. of loss.	
1	2	3	4	5	6	7	8	9	10	11	12
1.	Primary Consumers stores.	373	1,58,959	-	-	42.95	44.08	2,03,30	31,41.09	32,31.48	7.60
2.	Wholesale stores	15	70,817	420	7	91.48	58.72	4,61.79	30,29.14	32,13.61	(-)10.01 Loss
3.	Co-operative Canteen.	48	18,442	-	-	2.36	6.17	14.63	87.18	89.31	(-) 0.11 Loss
TOTAL		436	2,48,224	420	7	1,36.79	1,08.97	6,76.72	62,60.41	65,34.40	(-) 2.52 Loss

Statement regarding consumers co-operative societies during the year 76-77

1.	Primary Consumers Stores.	386	1,64,159	-	-	46.09	45.95	2,12.19	36,31.03	31,39.75	12.43
2.	Wholesale Stores.	22	79,569	420	7	1,70.87	59.25	5,03.54	50,47.14	7,64.47	12.33
3.	Co-operative Canteen	49	19,332	-	-	2.61	6.20	11.78	99.27	90.22	19.00
TOTAL		457	2,63,060	420	7	2,19.57	1,09.40	7,27.51	87,77.44	39,94.44	43.76

Source :- The District Deputy Registrar of Co-operative Societies, Bombay.

Table No. 29.

Number of registered Money Lenders and Loans advanced by them in Gr. Bombay during 1975-76.

Sr. No.	Year.	Number of Money Lenders.	Loans advanced to the Traders, (Rs. in 000)	Loans advanced to Non-traders	Total (in Rs. 000) (4 + 5)
1	2	3	4	5	6
1.	1975 - 76	2,210	27,92,72	5,37,23	33,29,95
			<u>1976-77</u>		
2.	1976-77	2,050	20,94,17	3,72,92	24,67,09

Source :- The District Deputy Registrar of Co-operative Societies, Bombay.

TABLE NO. 30.

Medical facilities available in Govt. Hospital in Gr. Bombay District
as on 1975-76 and 1976-77.

As on	Hospital		Dispensaries.	Total No. of beds in all Institutions.
	General	For Special diseases.		
1	2	3	4	5
31.12.76	1. J.J. Group of Hospitals, Bombay-8. 2. G.T. Hospital, Bombay-21. 3. St. George's Hospital, Bombay-1. 4. Cama & Alb. Hospital, Bombay-1.	There is no separate hospitals for specialised diseases. However there are facilities of treating patients of various diseases at the said four Hospitals.	* 1. Bandra Dispensary - O.P.D. 2. Sachivalaya - O.P.D. 3. Malbar Hill O.P.D. 4. M.L.A. Hostel - O.P.D. 5. High Court - O.P.D. 6. Mahalaxmi O.P.D.	1. J.J. Group of Hospitals. 1,292 2. G.T. Hospital 521 3. St. George's Hospital 463 4. Cama & Alb. Hospital 352
31.12.77	- do -	- do -	- do -	- do -

* There are no Indoor beds attached to any dispensary except Bandra Govt. Colony Dispensary which has 4 beds for Maternity. Other dispensaries give O.P.D. treatment only.

Source: Directorate of Medical Education & Research, Bombay - 400 001.

Table No.

No. of Births and Deaths registered in
Gr. Bombay during the year 1975 & 1976

<u>Sr.</u> <u>No.</u>	<u>Item</u>	<u>Year 1975</u>	<u>Year 1976</u>
1.	2.	3.	4.
1.	No. of Births registered	1,80,018	1,90,911
2.	No. of Deaths registered	65,234	64,403
3.	No. of infant deaths registered	13,767	14,147

Source: Municipal Corporation of Gr. Bombay
Public Health Department.

; 84 ;
Table No.

No. of Deaths due to important causes
in Gr. Bombay during the year 1975 & 1976

Sr. No.	Causes	Year 1975	Year 1976
1.	2.	3.	4.
1.	Malaria	1	Nil
2.	Cholera	Nil	Nil
3.	Small Pox	Nil	Nil
4.	Tuberculosis	8,415	7,452
5.	Pncumonia	8,759	8,411
6.	Dysentery, Diarropoea and Enterities	3,946	4,127
7.	Heart Diseases	6,855	7,280
8.	Typhoid	49	34
9.	Cancer	2,854	3,189
10.	Respiratory diseases without Pncumonia	22,887	2,920
11.	All accidents.	5,277	4,995
12.	Other Causes	26,191	25,995
13.	<u>Total Deaths</u>	<u>65,234</u>	<u>64,403</u>

Source:- Municipal Corporation of Gr. Bombay,
Public Health Department.

Table No.

Family Planning centres operation in
Gr. Bombay during 1975-76 and 1976-77

Sr. No.	Item	Year 1975-76	Year 1976-77
1.	2.	3.	4.
1.	Family Planning Centres (Nos.)		
	i) Government.	5	5
	ii) Local Bodies.	52	52
	iii) Voluntary Organisations.	13	13
	TOTAL	70	70
2.	No. of Sterilisation operations done.		
	i) Vasectomy	26,485	40,782
	ii) Tubectomy	28,394	37,925
	TOTAL	54,879	78,707
3.	No. of I.U.D. insertions performed.	11,823	8,997

Source:- Urban Development & Public Health Department,
Mantralaya.

Table No. 3

Distribution of Pupils by standard (In pre-primary- primary & Secondary Schools)
in Greater Bombay for the ^{year} 1975-76 and 1976-77.

Sr No	Standard	1975-76			1976-77		
		Boys.	Girls	Total	Boys	Girls	Total
1	2	3	4	5	6	7	8
1.	Pre-Primary	10,569	8,224	18,793	14,693	12,090	26,783
2.	Standard - I	1,10,373	96,238	2,06,611	1,34,001	1,17,577	2,51,578
3.	Standard - II	91,553	78,117	1,69,670	1,01,056	87,002	1,88,058
4.	Standard - III	85,877	72,050	1,57,927	92,411	77,652	1,70,063
5.	Standard - IV	78,168	64,970	1,43,138	81,979	69,046	1,51,025
6.	Standard - V	75,668	59,874	1,35,542	79,248	63,832	1,43,080
	<u>TOTAL - I to V</u>	<u>4,52,203</u>	<u>3,79,473</u>	<u>8,31,681</u>	<u>5,03,393</u>	<u>4,27,199</u>	<u>9,30,592</u>
7.	Standard - VI	62,619	49,229	1,11,848	64,170	50,997	1,15,167
8.	Standard - VII	55,953	43,710	99,663	55,783	43,523	99,306
9.	Standard - VIII	56,163	39,362	95,525	56,944	40,131	97,075
	<u>TOTAL - VI to VIII</u>	<u>1,74,735</u>	<u>1,32,301</u>	<u>3,07,036</u>	<u>1,76,897</u>	<u>1,34,651</u>	<u>3,11,548</u>
10.	Standard - IX	49,501	34,793	84,294	49,283	35,353	84,641
11.	Standard - X	38,359	27,982	66,341	38,390	26,633	65,023
12.	Standard - XI	17,062	11,876	28,938	20,956	14,853	35,809
13.	Standard - XII	-	-	-	14,841	11,008	25,849
	<u>TOTAL - IX to XII</u>	<u>1,04,922</u>	<u>74,651</u>	<u>1,79,573</u>	<u>1,23,475</u>	<u>87,847</u>	<u>2,11,322</u>
	<u>GRAND TOTAL</u>	<u>7,31,865</u>	<u>5,56,425</u>	<u>13,18,290</u>	<u>8,03,765</u>	<u>6,49,697</u>	<u>14,53,462</u>

Source :- Directorate of Education, Maharashtra State, Pune.

Table No. 35

Distribution of Pupils in Primary and Secondary Schools according to Medium of instructions in Gr. Bombay for the year 1975-76.

(No. of pupils)

Sr. No.	Type	Marathi	Gujarati	Urdu	Hindi	Sindhi	English	Kannad	Telgu	Others	Total
1	2	3	4	5	6	7	8	9	10	11	12
1.	Primary	3,67,509	1,02,773	77,415	60,275	1,888	1,38,839	11,801	7,398	10,396	7,78,294
2.	Secondary	1,95,132	95,611	23,363	31,029	3,014	1,70,251	7,557	492	-	5,26,449
	<u>TOTAL</u>	<u>5,62,641</u>	<u>1,98,384</u>	<u>1,00,778</u>	<u>91,304</u>	<u>4,902</u>	<u>3,09,090</u>	<u>19,358</u>	<u>7,890</u>	<u>10,396</u>	<u>13,04,743</u>

Source : Directorate of Education, Maharashtra State, Pune.

Table No. 35

Distribution of pupils in Primary and Secondary Schools according to medium of instructions in Gr. Bombay for the year 1976-77

(No. of pupils)

Sr. No.	Type	Marathi	Gujarati	Urdu	Hindi	Sindhi	English	Kannad	Telgu	Other	Total
1.	2.	3.	4.	5.	6.	7.	8.	9.	10.	11.	12.
1.	Primary	3,88,026	1,02,687	81,493	65,753	1,628	1,41,640	12,446	8,146	11,859	8,13,678
2.	Secondary	2,53,614	93,212	21,687	34,370	2,644	1,98,332	689	457	-	6,05,005
TOTAL		6,41,640	1,95,899	1,03,180	100,123	4,272	3,39,972	13,135	8,603	11,859	14,18,683

Source:- Directorate of Education, Maharashtra State, Pune.

Table No. 57

Number of Back-ward Class beneficiaries (Students) in Gr. Bombay during 1975-76.

Sr. No.	Beneficiaries Class.	Pre-Primary			Primary			Secondary and Higher Secondary			Total		
		Boys	Girls	Total	Boys	Girls	Total	Boys	Girls	Total	Boys	Girls	Total
1	2	3	4	5	6	7	8	9	10	11	12	13	14
1.	Scheduled Castes	23	9	32	34,655	23,096	58,551	12,428	7,336	19,764	47,106	31,241	78,347
2.	Scheduled Tribes	3	5	8	4,216	3,083	7,299	1,392	1,168	2,560	3,911	4,256	10,167
3.	Other Back-ward Class	NA	NA	NA	34,797	28,489	63,286	N.A.	N.A.	N.A.	34,797	28,489	63,286

Table No. Contd./... (1976-77)

1.	Scheduled Castes	111	87	198	62,108	47,437	1,09,545	16,729	8,597	25,326	78,940	56,121	1,35,069
2.	Scheduled Tribes	11	7	18	6,737	4,958	11,695	2,402	1,469	3,871	9,150	6,434	15,584
3.	Other Back-ward Class	17	8	25	28,692	23,755	52,447	6,639	3,106	9,745	35,348	26,869	62,217

Source :- Director of Education, Maharashtra State, Pune.

Table No. 38

Backward Class Concessions for free education in Gr. Bombay
during the year 1975-76 and 1976-77.

Sr No	Year	Item	Pre-Primary	Primary	Secondary & Higher Secondary	Higher Institutions	Total
1	2	3	4	5	6	7	8
1.	1975-76	No. of beneficiaries	-	-	40,985	7,396	48,381
2.	1976-77	No. of beneficiaries	-	-	65,489	7,636	73,125

Source :- Directorate of Education, Maharashtra State, Pune.

Note :- Information regarding concessions granted for the year 1975-76 & 1976-77 is not available in the Directorate of Education.

106

Table No. 39.

No. of Institutions, Pupils, and Teachers in Gr. Bombay
during the year 1976-77.

Sr No.	Category.	No. of Insti- tutio- ns.	Pupils			Teachers.			Expenditure (inRs.)	
			Boys	Girls	Total	Train- ed.	Un-Tra- ined.	Total	Teaching (Rs.in '000)	Non-Teach- ing. (Rs.in '000)
1	2	3	4	5	6	7	8	9	10	11
1.	Pre-Primary.	64	5,105	4,339	9,444	257	52	309	13,21	20,35
2.	Primary	1,819	4,38,535	3,75,143	8,13,678	21,879	1,491	23,370	13,28,29	1,49,94
3.	Secondary	699	3,48,601	2,56,404	6,05,005	17,984	1,611	19,595	12,03,61	1,87,87
T O T A L		2,582	7,92,241	6,35,886	14,28,127	40,120	3,154	43,274	25,45,11	3,40,16

Source : Directorate of Education, Maharashtra State - Pune -1.

TABLE

Length of Railway Routes in Gr. Bombay during

(Length in Kms.)

Sr. No.	Broad Gauge			Total Railway Route
	Single	Double	Triple or more.	
1	2	3	4	5
	12.10	32.47	66.30	110.87

Table No. 11

Road length according to category and surface classification in

Gr. Bombay during 1975-76.

(Length in Kms.)

Sr. No.	Type of Roads/ Category	P.W. & H. Department.	Municipal Corporation.	Port Trust.
1	2	3	4	5
	<u>I. Category</u>			
1.	Express Highway	44.00	-	-
2.	State Highways.	6.00	-	-
3.	Major Roads.	-	42.00	17.00
4.	Link Roads.	5.00	15.00	17.90
5.	Other Roads.	-	1287.09	57.38
	Total - I.	55.00	1344.09	75.28
	<u>II. Surface Classification.</u>			
1.	Cement Concrete	-	190.15	7.35
2.	Black Topped.	55.00	1115.94	67.72
3.	Water bound macadam	-	6.80	0.21
4.	Unsurfaced Roads.	-	31.20	-
	Total - II.	55.00	1344.09	75.28

Source:- 1) Public Works & Housing Deptt. (2) Bombay Port Trust and
3) Municipal Corporation.

Table No. 41.

Road Length according to category and surface classification in Gr. Bombay
for the year 1976-77.

(Length in Kms.)

Sr. No.	Type of Road/Category	B and C Department.	Municipal Corporation.	Port Trust.
1	2	3	4	5
<u>I-st Category</u>				
1.	Express Highways.	55*	-	-
2.	State Highways.	5	-	-
3.	Major Heads	-	42.00	-
4.	Link Roads.	-	15.00	17.90
5.	Other Roads.	-	1311.15	57.38
Total - I.		60	1368.15	75.28
<u>Urban Roads.</u>		-	1423	-
<u>II - Surface Classification.</u>				
1.	Cement Concrete.	-	190.15	7.35
2.	Black Topped.	60	1140.00	67.12
3.	Water Bound Mecadam	-	6.80	0.21
4.	Unsurfaced Roads.	-	31.20	-
Total - II.		60	1368.15	75.28

* Link Roads are also included.

Source :- 1) Public Works and Road, Deptt. 2) Bombay Port Trust, 3) Municipal Corporation.

Table No.42

No. of Motor Vehicles in Operation in
Bombay District during the year 1975 & 1976.

Sr. No.	Class of Vehicles	As on 1.1.1976	As on 1.1.1977
1.	2.	3.	4.
1.	Motor Cycles & Scooters.	51,764	56,087.
2.	Motor Car.	1,22,976	1,27,215
3.	Taxi Cabs.	20,630	22,883
4.	Auto Rickshaws	56.	186
5.	<u>Stage Carriages.</u>		
	i) Diesel	2,294	2,609
	ii) Petrol	47	56
56.	<u>Lorries</u>		
	a) <u>Private Carriers</u>		
	i) Diesel	9,305	9,757
	ii) Petrol	4,182	4,268
	b) <u>Public Carriers</u>		
	i) Diesel	11,345	12,145
	ii) Petrol	6,181	6,252
7.	Ambulances.	331	331
8.	School Buses.	371	380
9.	Private Services Vehicles.	678	739
10.	Trailers.	508	359
11.	Tractors.	589	687
12.	Others.	1,211	1,236
TOTAL		2,32,468	2,45,230

Source : Transport Commissioner's Office, Bombay.

Table No.43

Operational statistice of B E S T Buses
in Gr. Bombay during 1975-76 & 1976-77.

Sr. No.	Particulars	Year 1975-76*	Year 1976-77
1.	2.	3.	4.
1.	Fleet owned (As at the end of the year)	1,639	1,667
2.	Effective fleet (As at the end of the year)	1,583	1,633
3.	Average effective fleet	1,506	1,614
4.	Average numbers of buses in service.	1,370	1,486
5.	Fleet utilisation (Average for year (Item 4 and 3))	90.97%	92.07%
6.	(a) No. of routes (as at the end of the year)	144	138**
	(b) Effective Kms. (Aggregate)	10,84,95,193	12,02,99,696
	(c) Daily Average (Kms.)	2,97,247	3,29,588
	(d) Vehicles utilisation (Kms.)	217.0	221.8
7.	(a) Passengers carried (No)	1,12,90,51,050	1,20,50,11,737
	(b) Daily Average (No)	30,93,290	33,01,402
8.	(a) Earnings (Rs.)	29,32,07,221	35,01,63,806@
	(b) Daily Average (Rs.)	8,03,307	9,59,353
	(c) Per Vehicles in Service (Rs.)	586.36	645.59
	(d) Per seat - Km. (P)	3.60	3.88
	(e) Per Km. (P)	270.25	291.08
	(f) Per Passenger (P)	25.97	29.06
	(g) Cost per Km. (P)	312.66	N.A.
9.	(a) Bus depots (No)	12	13
	(b) Drivers (No)	4,995	5,204
	(c) Conductors (No)	6,979	7,308

1.	2.	3.	4.
10. Total No. of staff engaged in Transport (Office & Field staff)		20,80	21,21,012
11. Total income accruing to staff at item No. 10 (Rs. in '000)		3,10,582	N.A.
12. No. of tickets issued (Denomination wise) @@			
	<u>Paise</u>		
	5	49	
	10	5,28,99,543	5,71,36,031
	15	18,10,42,154	75,02,975
	20	35,18,56,581	49,46,41,395
	25	21,81,30,247	32,79,23,128
	30	10,17,17,294	2,57,75,359
	35	4,74,23,465	-
	40	7,73,45,896	15,52,00,671
	45	2,02,49,596	-
	50	2,51,88,049	5,07,01,434
	55	92,37,727	-
	60	1,95,42,318	4,68,15,751
	65	84,71,761	-
	70	41,91,683	-
	80	67,01,328	2,48,03,850
	100	36,68,625	1,39,35,281
	120	11,03,351	40,17,389
	140	16,767	50,269
	TOTAL	1,12,87,86,431	1,20,85,03,533

* Average of 365 days as there was no operation of buses on 1975-04-29 due to Drivers strike.

** In accounting the routes, clock-wise and anti-clock wise ring routes have been counted as one route.

@ Provisional figures as accounts are not yet finalised.

** Fare structure has been revised with effect from 1977-12-23

Source :- Bombay Electric Supply & Transport undertakings.

Table No.44

OPERATION OF MAHARASHTRA STATE ROAD TRANSPORT
CORPORATION IN BOMBAY DISTRICT DURING THE YEAR 1975-76 &
1976-77

Sr. No.	Particulars	Year 1975-76	Year 1976-77
1.	2.	3.	4.
1.	No. of Bus depots in Gr. Bombay District.	2	2
2.	The Bus fleet attached to Depots, in Bombay (Number)	123	124
3.	Average number of Buses in Bombay on Road per day.	80	80
4.	No. of routes in Bombay as at the end of the year.	NIL	NIL
5.	Number of passengers travelled per day.	1345820	1687771
6.	Total traffic receipts originating in Bombay during the year (Rs. in 000)	14762146	17528906
7.	Average earnings per passenger (in paise)	10.96	10.38

Source : Divisional controller, State transport, Palghar
 Divn. Bombay - 400 025.

Table No. 46.

Income and Expenditure of Bombay Municipal Corporation.

(Rs. in Thousand)

Sr. No.	Particulars.	1975-76	1976-77
1	2	3	4
		Rs.	Rs.
	<u>INCOME</u>		
1.	<u>Grants and contributions.</u>		
	i) Government	5,97.93	4,79.7
	ii) Others	-	-
2.	<u>Taxes.</u>		
	i) <u>Taxes on Income of Property</u>		
	1) On House and Land	24,52.82	26,89.1
	2) Other (specify in Foot-notes)	7,05.87	10,06.8
	ii) <u>Commodity Taxes.</u>		
	1) Octroi	28,21.70	43,82.8
	2) Others (Specify in foot notes)	-	-
	iii) Other Taxes (Specify in foot-note)	*27,49.65	42,54.8
	<u>TOTAL TAXES.</u>	87,30.04	1,23,33.58
3.	Revenue derived from properties	16,33.72	21,81.1
4.	Total Receipts from commercial undertakings.	62,08.95	81,37.58
5.	Dis-investments		
	i) Shares.	Nil	Nil
	ii) Securities.	Nil	Nil
6.	Loans Received.	Shown under Capital Account	
7.	Receipts on Account of Repayment of Loans.	Nil	Nil

Sr. No.	Particulars.	1975-76	1976-77
1	2	3	4
		Rs.	Rs.
8.	Other (Specify in foot note)	Nil	Nil
	<u>Total Income 1 to 8</u>	1,71,70.64	2,31,32.13

EXPENDITURE.

1.	General Administration	6,94.72	9,93.66
2.	Cost of Collection of Taxes.	2,23.20	2,50.70
3.	Public Safety	1,52.02	1,79.13
4.	Public Health and Convenience.	32,71.64	35,77.95
5.	Public Works.	51,67.62	53,31.82
6.	Public Instruction	3,43.18	3,30.21
7.	Total Expenditure in respect of Commercial undertakings.	62,20.63	72,59.73
8.	Investment in		
	i) Shares.	Nil	Nil
	ii) Securities.	Nil	Nil
9.	Loan Given.	Nil	Nil
10.	Loans repaid	-	-
11.	Other (Specify in foot note)	11,81.13	15,92.84
	<u>TOTAL EXPENDITURE.</u> <u>1 to 11</u>	1,72,54.14	1,95,16.04

£ Includes Fire Tax, Halalkhore Tax, Water Tax and Edu. Cess.

* Includes Water Benefit Tax, Swerage Benefit Tax, Wheel Tax, Theatre Tax and Dog Tax.

Note :- While recording expenditure/receipts in different columns, it may please be ensured that there is no overlapping.

Source :- Bombay Municipal Corporation.

Table No.47

~~District~~ Annual Plan Expenditure under different development Heads, Sub-heads in respect of district level schemes in Gr. Bombay during the years 1974-75 to 1976-77

(Rs. in Lakhs)

Sr. No.	Head/ sub-head	Actuals		
		1974-75	1975-76	1976-77
1	2	3	4	5
I	<u>Agriculture and Allied Services</u>			
	i) Dairy Development	10.32	21.32	10.15
	ii) Fisheries	4.25	3.56	2.10
II	<u>Co-operation</u>			
	iii) Co-operation	1.13	0.05	2.00
III	<u>Industry and Mining</u>			
	iv) Industry and Mining	4.76	11.67	9.72
IV	<u>Transport and Communications</u>			
	v) Ports and harbours	-	1.72	1.12
	vi) Road Transport	23.93	68.73	71.70
V	<u>Social & Community Services</u>			
	vii) General Education	85.53	233.26	213.25
	viii) Technical Education	0.58	0.09	17.52
	ix) Medical and Public Health	1.50	9.27	33.36
	x) Sewerage and Water Supply	105.03	154.58	488.45
	xi) Housing	109.10	469.62	442.29
	xii) Urban Development	20.96	85.52	34.79
	xiii) Information and Publicity	0.06	0.33	0.75
	xiv) Labour and Labour Welfare	-	16.68	12.07
	xv) Welfare of Backward Classes	0.30	10.89	16.00
	xvi) Social Welfare	-	0.07	3.00
	xvii) Nutritions	-	-	13.50
	T O T A L	377.43	1087.36	1371.73

Source:- Draft Annual Plan Gr. Bombay District for 1978-79

Table No. 48.

Wholesale average prices of certain Agricultural Commodities
at various markets in the Bombay City in Gr. Bombay District

Sr No	Important Commodities.	Variety.	Average price (Rs.) per quintal.	
			1975-76	1976-77
1	2	3	4	5
1.	Rice	-	N.A.	N.A.
2.	Wheat	Maharashtra Desi No. 2.	200.22	158.00
3.	Paddy	-	-	-
4.	Jowar	M.P. White	137.06	119.85
5.	Bajri	Khandesh. No. 2	126.88	109.50
6.	<u>Pulses :</u>			
	1. Urid	Khandeshi	165.83	227.27
	2. Moong	Green	182.05	174.29
	3. Masur	Bold	179.17	184.04
	4. Tur	White	175.42	166.50
	5. Matl	White	158.75	112.08
	6. Gram	Yellow	190.71	133.67
	7. Chavali	White	144.72	150.42
7.	<u>Oil Seeds.</u>			
	1. Ground Nut seed	Bold	271.67	318.18
	2. Caster Seed	Bold	161.50	237.83
	3. Lin Seed	Bold	224.17	273.83
8.	Chillies	Byadgi	1088.68	856.25
9.	Tobacco Bidi	Nipani-Bundal Buki	1400 to 1500	1377.08 to 1454.17
10.	Tobacco (Chewing)	Nipani-hundred Numbri	900 to 1100	900.00 to 1008.33
11.	Tobacco (Leaf)	Hatpan Nipani	1300 to 1500	1300 to 1500
12.	Onions	Nashik No. 1	9070.00	5123.33
13.	Potatoes	Talegaon No. 1	9123.33	11874.55
14.	Gul	Kolhapur No. 1	262.42	271.83

Source :- Deputy Director of Marketing (Survey & Research),
Maharashtra State, Bombay.

Table No.49

Average Retail Prices of important commodities in Gr. Bombay District
during 1975-76

(Prices in Rs.)

Sr. No.	Commodity	Brief description of Quality and Variety Brand count etc. (Local Trade name)	Unit	Average retail prices in the month of												Average for the year
				April, 1975	May, 1975	June, 1975	July, 1975	Aug., 1975	Sept., 1975	Oct., 1975	Nov., 1975	Dec., 1975	Jan., 1976	Feb., 1976	March, 1976	
1.	2.	3.	4.	5.	6.	7.	8.	9.	10.	11.	12.	13.	14.	15.	16.	17.
1.	Rice	i)Gurmutia medium mill husked, slightly broken grains mixed with the whole. ii)No.24, Mill husked medium, slightly broken mixed with whole.	Per Kg.	1.88	1.78	1.86	1.81	1.79	1.79	1.84	2.08	1.98	2.44	2.46	2.27	2.00
2.	Wheat (Whole)	Controlled variety, over seas.	Per Kg.	1.38	1.38	1.38	1.38	1.38	1.38	1.38	1.38	1.38	1.38	1.38	1.38	1.38
3.	Jawar	Sholapuri medium, brownish.	Per Kg.	2.28	2.23	2.12	2.07	2.04	2.04	1.95	1.72	1.35	1.27	1.11	1.11	1.77

1.	2.	3.	4.	5.	6.	7.	8.	9.	10.	11.	12.	13.	14.	15.	16.	17.
4.	Bajri	Nasik, medium, small grains.	Per Kg.	2.32	2.44	2.48	2.35	2.35	2.35	1.90	1.64	1.43	1.38	1.36	1.29	1.94
5.	Turdal	Kanpuri Medium	"	2.99	3.07	3.03	2.73	2.63	2.64	2.70	2.79	2.78	2.68	2.48	2.23	2.68
6.	Gram Dal	'Sapra' Medium without husk	"	2.79	2.87	2.85	2.66	2.65	2.76	2.83	2.84	2.81	2.77	2.69	2.39	2.74
7.	Moong Dal	Desi, medium without husk, yellow colour split.	"	3.43	3.67	3.82	3.78	3.73	3.54	3.07	2.99	2.88	2.81	2.76	2.68	3.26
8.	Urid Dal	Desi, medium without husk white colour split.	"	3.24	3.50	3.59	3.58	3.53	3.65	3.66	3.28	3.03	2.94	2.88	2.81	3.31
9.	Coconut Oil	Mill made, medium pure	"	5.70	5.65	5.31	4.46	4.20	4.28	4.25	4.68	4.78	4.72	4.61	4.46	4.76
10.	Groundnut Oil	Mill made, medium pure	"	3.85	3.98	3.87	3.59	3.76	3.48	3.47	2.95	2.49	2.35	2.13	2.09	3.17
11.	Vanaspatti	Any standard brand, loose	"	6.06	6.60	6.38	5.60	5.62	5.42	5.13	5.22	4.63	4.35	4.14	3.95	5.26
12.	Sugar	'Mill made', medium, small crystal, white	"	1.46	1.54	1.46	1.40	1.47	1.42	1.32	1.44	1.43	1.44	1.53	1.50	1.45

			1	2	3	4	5	6	7	8	9	10	11	12	13	14	15	16	17
13. Onion	'Kanda' desi medium, dry	Per Kg.	0.36	0.36	0.39	0.48	0.57	0.63	0.80	1.15	1.37	0.53	0.36	0.33	0.59				
14. Potatoes	'Bhatata' desi medium Fresh	"	0.49	0.55	0.60	0.60	0.62	0.64	0.64	0.69	0.65	0.50	0.50	0.51	0.58				
15. Washing soap.	501 Tata (2 half bar)	Per Bar	4.00	4.00	4.00	4.17	4.25	4.27	4.27	4.27	4.24	4.24	3.76	3.73	4.10				
16. Kerosene Oil.	'Phaslate' Superior, White.	Per Ltr.	1.04	1.04	1.04	1.06	1.09	1.09	1.09	1.09	1.21	1.21	1.21	1.21	1.11				
17. Charcoal	Charcoal, medium, mixture big and small pieces.	40. Kg.	31.06	31.06	31.06	31.04	27.37	27.97	27.92	27.85	27.85	28.00	28.00	28.00	28.97				

Table No. 4

Average Retail Prices of important commodities in Gr. Bombay District
during 1975-76

(Prices in Rs.)

Sr. No.	Commodity	Brief description of Quality and variety Branch count etc. (Local trade name)	Unit	Average retail prices in the month of												Average for the year.
				April 1976	May 1976	June 1976	July 1976	Aug. 1976	Sept. 1976	Oct. 1976	Nov. 1976	Dec. 1976	Jan. 1977	Feb. 1977	March 1977	
1	2	3	4	5	6	7	8	9	10	11	12	13	14	15	16	17
1.	Rice	i) Gurmudia medium, mill husked, slightly broken grains mixed with the whole ii) No. 24, mill husked medium slightly broken mixed with whole.	Per Kg.	2.17	2.15	2.20	2.09	1.72	1.91	1.83	1.89	1.76	1.66	1.84	1.63	1.90
2.	Wheat (Whole)	Controlled variety, over seas.	"	1.38	1.38	1.38	1.38	1.33	1.38	1.38	1.38	1.38	1.38	1.38	1.38	1.38
3.	Jawar	Sholapuri medium, brownish colour.	"	1.09	0.96	0.92	0.92	1.07	1.30	1.28	1.25	1.79	1.72	1.58	1.51	1.28

			1	2	3	4	5	6	7	8	9	10	11	12	13	14	15	16	17
4.	Bajri	Nasik, medium small grains	Per Kg	1.29	1.32	1.38	1.45	1.45	1.48	1.46	1.46	1.42	1.40	1.41	1.43	1.41			
5.	Turdal	Kanpuri, medium,	"	2.29	2.28	2.20	2.26	2.29	2.36	2.38	2.62	2.71	3.04	3.74	3.87	2.67			
6.	Grandal	'Sapra' medium, without husk.	"	2.29	2.05	1.92	1.91	1.90	1.93	1.92	1.93	1.90	1.90	1.99	2.02	1.97			
7.	Moong dal.	Desi, medium without husk, yellow colour split.	"	2.82	2.89	2.90	2.92	2.88	2.87	2.74	2.77	2.79	2.94	3.40	3.31	2.94			
8.	Urid dal.	Desi, medium without husk white colour split	"	3.15	3.38	3.48	3.76	3.06	3.34	3.72	3.56	3.56	3.86	3.98	4.00	3.73			
9.	Coconut oil.	Mill made, medium pure.	"	4.58	4.59	4.44	4.81	4.81	5.53	6.27	6.68	7.27	7.59	6.88	6.35	5.82			
10.	Ground nut oil	Mill made medium pure	"	2.30	2.24	2.30	3.03	3.12	3.10	3.10	3.10	3.42	3.57	4.49	4.16	3.16			
11.	Vanaspati	Any standard brand, loose.	"	4.10	4.02	3.96	4.17	5.02	4.86	4.69	5.28	5.31	5.72	5.89	5.87	4.95			
12.	Sugar	Mill made, medium, small crystal, white	"	1.56	1.44	1.57	1.63	1.51	1.66	1.64	1.64	1.59	1.54	1.53	1.52	1.57			

			1	2	3	4	5	6	7	8	9	10	11	12	13	14	15	16	17
13.	Onion	'Kanda' desi medium, dry	Per Kg	0.30	0.27	0.26	0.29	0.29	0.29	0.39	0.49	0.50	0.58	0.59	0.59	0.40			
14.	Potatoes	'Batata' desi medium, fresh	"	0.52	0.62	0.75	0.77	0.76	0.78	0.78	0.78	0.76	0.60	0.60	0.67	0.70			
15.	Washing soap.	501 Tata (2 half bar)	Per Bar	3.72	3.69	3.65	3.63	3.61	3.63	3.63	3.63	3.61	3.57	3.67	3.61	3.34			
16.	Kerosene Oil	'Ghaslate' Superior, White.	Per Ltr	1.21	1.21	1.21	1.21	1.21	1.21	1.21	1.21	1.21	1.21	1.21	1.21	1.21			
17.	Charcoal	Charcoal, medium, mixture big and small pieces.	40 Kg.	28.00	28.00	28.00	27.97	27.92	28.04	28.17	28.17	28.17	28.17	28.17	28.02	28.07			

103

Table No.50

Consumer price index numbers (Revised Series) for
working class, during 1975-76 & 1976-77, Centre-Bombay

Base period: 1960 = 100.

Sr. No.	Month/year	Food	Pan Supari, Tobacco and intoxi- cants,	Fuel & Light	Hou- sing	Cloth- ing, bedd- ing foot wear	Misc.	Genera Index
1.	2.	3.	4.	5.	6.	7.	8.	9.
1.	April, 1975	338	303	364	124	284	237	303
2.	May, 1975	346	303	365	124	280	237	308
3.	June, 1975	348	291	365	124	285	239	309
4.	July, 1975	340	284	369	128	285	240	305
5.	August, 1975	338	284	361	128	280	242	303
6.	September, 1975	335	284	361	128	277	243	301
7.	October, 1975	341	285	361	128	277	243	305
8.	November, 1975	338	286	360	128	278	243	303
9.	December, 1975	323	285	379	128	279	244	296
10.	January, 1976	316	289	379	131	278	247	292
11.	February, 1976	308	297	379	131	278	245	288
12.	March, 1976	303	312	379	131	278	244	286
13.	April, 1976	310	336	378	131	279	245	291
14.	May, 1976	309	329	379	131	280	245	290
15.	June, 1976	316	323	379	131	284	244	294
16.	July, 1976	320	325	379	137	293	244	298
17.	August, 1976	313	316	379	137	296	245	294
18.	September, 1976	320	316	379	137	300	245	298
19.	October, 1976	317	317	379	137	304	245	297
20.	November, 1976	319	327	379	137	304	245	299
21.	December, 1976	321	334	379	137	302	245	300
22.	January, 1977	322	337	379	143	304	246	301
23.	February, 1977	335	345	378	143	305	247	309
24.	March, 1977	333	349	378	143	309	248	309

— 110 —
Table No. 51.

Strength of Police (excluding C.I.D. staff & Railway Police Staff) in Gr. Bombay for the year 1976.

Sr. No.	Category	Perma- nent	Tempo- rary.	Total
1.	Addl. I.G. of Police/ Commissioner of Police.	-	1	1
2.	Addl. Commissioners of Police	-	2	2
3.	Dy. Commissioners of Police.	9	2	11
4.	Asstt. Commissioners of Police	18	14	32
5.	Inspector of Police	66	31	97
6.	Asstt. Inspector of Police (including P.S.Is.)	713	299	1,012
7.	Police Jamadars. (Armed/Unarmed)	195	48	243
8.	Head Constables/H.C. Ws. W.H.Cs. (Armed/unarmed)	1,878	1,617	3,495
9.	Police Constables/P.C.Ws. P.C.Ts., W.P.Cs. (Armed/unarmed)	10,401	2,227	12,628
10.	Launch Staff	69	32	101
11.	Police Prosecutors.	27	20	47
	<u>T O T A L</u>	<u>13,376</u>	<u>4,293</u>	<u>17,669</u>

Table No. 51 contd/...

Strength of Police (Excluding C.I.D. Staff and Rly. Police staff) in Gr. Bombay Police Force for the year 1977.

Sr. No.	Category	Permanent	Temporary	Total
1.	Addl. I.G. of Police/ Commissioner of Police.	-	1	1
2.	Addl. Commissioner of Police	-	1	1
3.	Dy. Commissioners of Police	9	3	12
4.	Asstt. Commissioner of Police.	18	14	32
5.	Inspector of Police	65	30	95
6.	Asstt. Inspectors of Police (including P.S.IS.)	694	319	1,013
7.	Police Jamadars (armed/unarmed)	219	44	263
8.	Head Constables/H.C.Ws. W.H.Cs. (Armed/unarmed)	1,857	2,269	4,126
9.	Police Constables/P.C.Ws. P.C.Ts./W.P.Cs. (Armed/unarmed)	9,765	3,136	12,901
10.	Launch Staff.	70	31	101
11.	Police Prosecutors.	29	22	51
	<u>T O T A L</u>	<u>12,726</u>	<u>5,870</u>	<u>18,596</u>

Source :- Office of the Commissioner of Police, Gr. Bombay.

Table No. 53 (II)

For the year 1976.

Sr. No.	Particulars.	Nos.
1.	Police Stations (including sub-police stations)	45
2.	Out Posts.	5
3.	Police Lock ups.	31
4.	Police Vehicles.	505
5.	Total Cost on Police Force, (in Rs.)	<u>10,95,81,690</u>

Table No. 51 (Part- II.)

For the year- 1977.

Sr. No.	Particulars.	Nos.
1.	Police Stations (including sub-police Stations (No.)	45
2.	Out Posts. (No.)	5
3.	Police Lock-ups (Nos.)	31
4.	Police Vehicles (No.)	505
5.	Total cost on Police Force (Rs. in 000)	11,40,70.780

Source :- Office of the Commissioner of
Police, Bombay.

Table No. 52.

Crime Statistics in Gr. Bombay during the year 1976.

Sr. No.	Particulars.	As on 1.12.1976.
1.	No. of recognizable offences registered.	33,255
2.	No. of Non- recognizable offences registered.	8,18,311
3.	No. of cases in which property was stolen.	18,064
4.	No. of cases in which property was recovered.	5,545
5.	Amount of property stolen (Rs. in 000)	15,19,04,202
6.	Amount of property recovered. (Rs. in 000)	3,85,08,738
7.	No. of persons arrested during the year.	24,753

Source :- Office of the Commissioner of Police,
Gr. Bombay.

Table No. 52.

Crime statistics in Gr. Bombay during the year 1977.

Sl. No.	Particulars	From 1.1.77 to 31.12.77
1.	No. of cognizable offences registered (No.)	4,10,045
2.	No. of Non-cognizable offences registered (No.)	93,183
3.	No. of cases in which property was stolen.	22,228
4.	No. of cases in which property was recovered.	8,321
5.	Amount of property stolen (Rs. 000)	6,35,78,821
6.	Amount of property recovered. (Rs.)	2,56,84,974
7.	No. of persons arrested during the year.	3,85,649.

Source :- Commissioner of Police, Bombay.

Table No. 53.

No. of cases disposed of in Civil and Criminal Courts of Gr. Bombay District, during the years 1975 and 1976.

Class of Court.	Year.	Civil				Criminal			
		Original		Appellate		Original		Appellate.	
		Regular	Misc.	Regu- lar	Misc.	Regular	Misc.	Regu- lar.	Misc.
1	2	3	4	5	6	7	8	9	10
City Civil and Sessions Court.	1975	6,839	2,722	-	92	452	-	329	457
Chief Metropolitan Magistrate	1975	-	-	-	-	8,21,744	-	-	-
Small Cause Court.	1975	16,687	13,000	327	175	-	-	-	-
Total		23,526	15,746	327	267	8,22,196	-	329	457
City Civil and Sessions Court	1976	7,597	2,775	-	100	547	-	840	-
Chief Metropolitan Magistrate	1976	-	-	-	-	9,80,184	-	-	-
Small Cause Court.	1976	19,152	18,541	380	147	-	-	-	-
Total		26,749	21,316	380	247	9,80,731	-	840	-

Source :- Registrar, High Court (Appellate side)

Cinema Statistics in Gr. Bombay during 1975-76 & 1976-77

Sr. No.	Item	1975-76	1976-77
1	2	3	4
1.	a) No. of permanent Talkies.	118	122
	b) Seating Capacity per show	1,00,083	1,03,989
2.	a) No. of Semi Movement Talkies	-	-
	b) Seating capacity per show	-	-
3.	a) No. of touring Talkies	-	-
	b) Seating capacity per show	-	-
4.	a) No. of permanent Drama theatres.	32	32
	b) Seating capacity per show	30,015	30,015
5.	a) No. of Semi Movement Drama Theatres.	Nil	Nil
	b) Seating capacity per show	-	-
6.	a) No. of Touring Drama theatres.	Nil	Nil
	b) Seating capacity per show	-	-

Source:- Commissioner of Police, Gr. Bombay.

Table No. 55.

No. of Banking Offices in Gr. Bombay during 75-76 & 76-77.

Sr. No.	Category of Bank.	No. of Banks		No. of Branches	
		75-76 (as on 31.3.76)	76-77 (as on 31.3.77)	75-76 (as on 31.3.76)	76-77 (as on 31.3.77)
1	2	3	4	5	6
1.	Scheduled Commercial Banks.	53	54	736	791
2.	Non-Scheduled Commercial Banks	-	-	-	-
3.	<u>Co-operative Banks.</u>				
	i) State Co-operative Banks	1	1	30	30
	ii) Central Co-op. Banks	1	1	1	1
	iii) Urban Co-op Banks	83	86	183*	186*
	iv) Primary (Salary Earner's Type) Co-op. Banks,	22	19	33	29
	v) Urban Credit Societies	1119	1168	1127	1175
	vi) Primary (Urban) Co-op. Banks,	79	80	149	156
	Total of Items 3.	1305	1355	1523	1577
	GRAND TOTAL	1358	1409	2259	2368

Source :- 1) Reserve Bank of India.

2) The Commissioner of Co-op. and Registrar of Co-operative Societies, M. S. Pune.

* Provisional

Table No. 57.

No. of Life Insurance Policies issued and amount incurred
in Gr. Bombay during 1975-76 & 1976-77.

Sr. No.	Particulars	Year 1975-76	Year 1976-77
1	2	3	4
1.	No. of Life Insurance Policies issued.	1,58,748	1,56,400
2.	Amount insured (Rs. '000)	200,41,82	197,75,89
3.	No. of policies matured (Includes Gr. Bombay district Kolaba, Thane & Goa Territory)	43,941	57,274
4.	Amount of matured policies (Rs. '000)	15,14,19	20,41,84
5.	Total Staff (Class-I, II, III & IV of Bombay Divisional Office)	<u>4,392</u>	<u>4,492</u>
6.	Total Salary paid to the above staff (Rs. '000)	<u>7,31.72</u>	<u>6,85.75</u>

Source:- Life Insurance Co-operations of India, Bombay Divisional Office.

- 120 -
Table No. 56

No. of Joint Stock companies in Gr. Bombay during the
Year 1975-76 & 1976-77.

Sr. No.	Particulars.	Year 1975-76	Year 1976-77
1	2	3	4
1.	Companies limited by shares. (No.) (both Govt. and Non-Govt.)		
	i) Public	1,206	1,258
	ii) Private	7,623	8,085
	<u>Total</u>	8,829	9,343
2.	Companies limited by guarantees (No.) (including Association not for profit)		
	i) Public	202	214
	ii) Private	32	31
	<u>Total</u>	234	245
	<u>GRAND TOTAL (1 + 2)</u>	9,063	9,588

Source:- Department of Company Affairs, Ministry of Law,
Justice and company affairs, Government of India,
New Delhi.

Table No. 58

Collection of Small Savings in Gr. Bombay during 1975-76 & 1976-77

						Rs. in Lakhs
Sr. No.	Year	Target	Gross Collection.	Withdrawals	Net Collection	
1	2	3	4	5	6	
1.	1975-76	22,00.00	64,46.87	53,59.70	10,87.17	
2.	1976-77	16,50.00	81,85.21	63,41.91	20,43.30	

Source :- Regional Director of Small Savings.

Table No. 59.

Land Revenue Collection in Gr. Bombay during
1975-76 & 1976-77.

(Figures in Rs.)

Sr. No.	Item	Year 1975-76	Year 1976-77
1	2	3	4
1.	Land Revenue	32,59,066	42,31,326
2.	Backbay Reclamation, (Lease Rent)	1,60,60,513	2,76,23,953

Source: Office of the Collector of Bombay, Old Custom House

Table No. 60.

No. of printing presses, news papers and periodicals
Published in Gr. Bombay during 1975-76 and 1976-77.

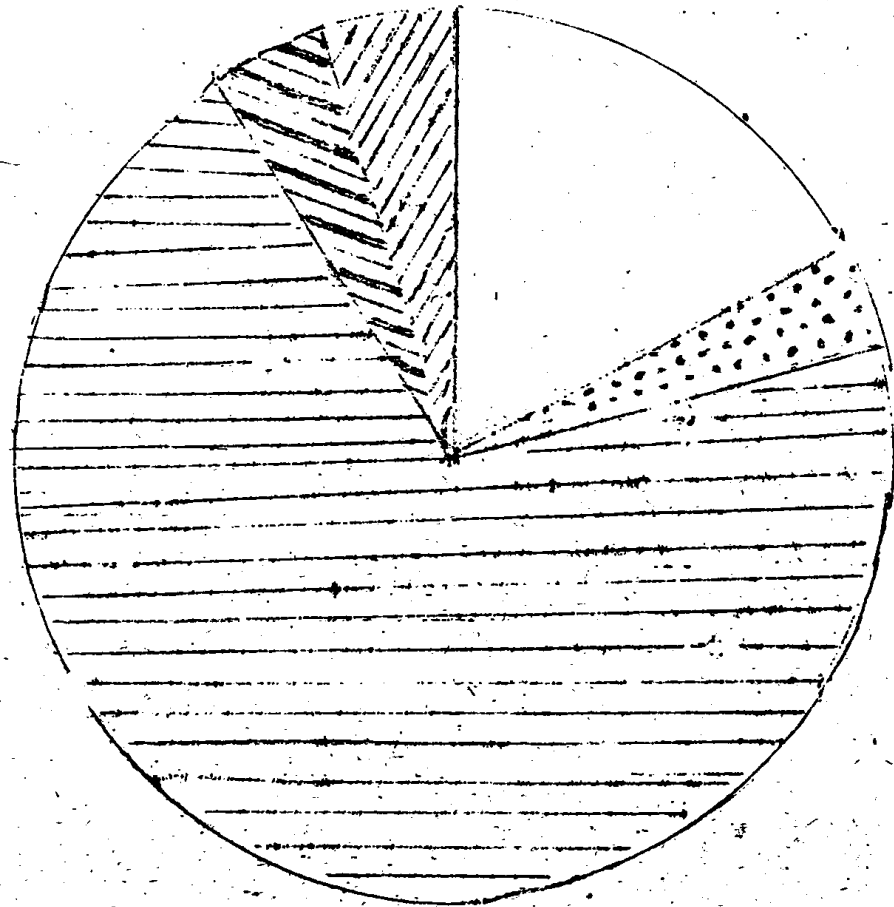
Sr. No.	Item	1975-76	1976-77
1	2	3	4
1.	No. of Printing Presses.	785	2,847
	No. of News Papers & periodicals published.		
	i) Dailies :		
	1) Marathi	9	7
	2) Hindi	2	3
	3) English	12	12
	4) Gujarati	5	5
	5) Urdu	6	5
	6) Others	2	2
	<u>Total</u>	36	34
	ii) Weeklies: (including Bi-weekly and Tri-Weekly)		
	1) Marathi	25	28
	2) Hindi	16	25
	3) English	43	45
	4) Gujarati	23	22
	5) Urdu	13	8
	6) Others	7	5
	<u>Total</u>	127	133
	iii) Fort-nights :		
	1) Marathi	12	14
	2) Hindi	15	17
	3) English	15	22
	4) Gujarati	8	11
	5) Urdu	9	8
	6) Others	2	2
	<u>Total</u>	61	74

Table No. 60./-

1	2	3	4
iv) Monthlies :			
1) Marathi		104	93
2) Hindi		46	53
3) English		244	248
4) Gujarati		89	87
5) Urdu		21	20
6) Others		9	10
<u>Total</u>		513	511
v) Quarterlies :			
1) Marathi		23	12
2) Hindi		23	20
3) English		197	207
4) Gujarati		17	17
5) Urdu		88	55
6) Others		Nil	Nil
<u>Total</u>		268	261
vi) Annuals (including four - monthlies & Six-monthlies)			
1) Marathi		21	19
2) Hindi		14	14
3) English		72	72
4) Gujarati		6	6
5) Urdu		5	6
6) Others.		12	11
<u>Total</u>		130	128

Source :- Office of the Examiner of Books & Publications.

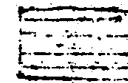
LAND UTILISATION IN GREATER BOMBAY 1976/77



NET AREA SOWN



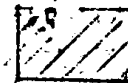
FOREST



AREA NOT AVAILABLE FOR CULTIVATION



OTHER UNCULTIVATED LAND EXCLUDING FALLOW LAND

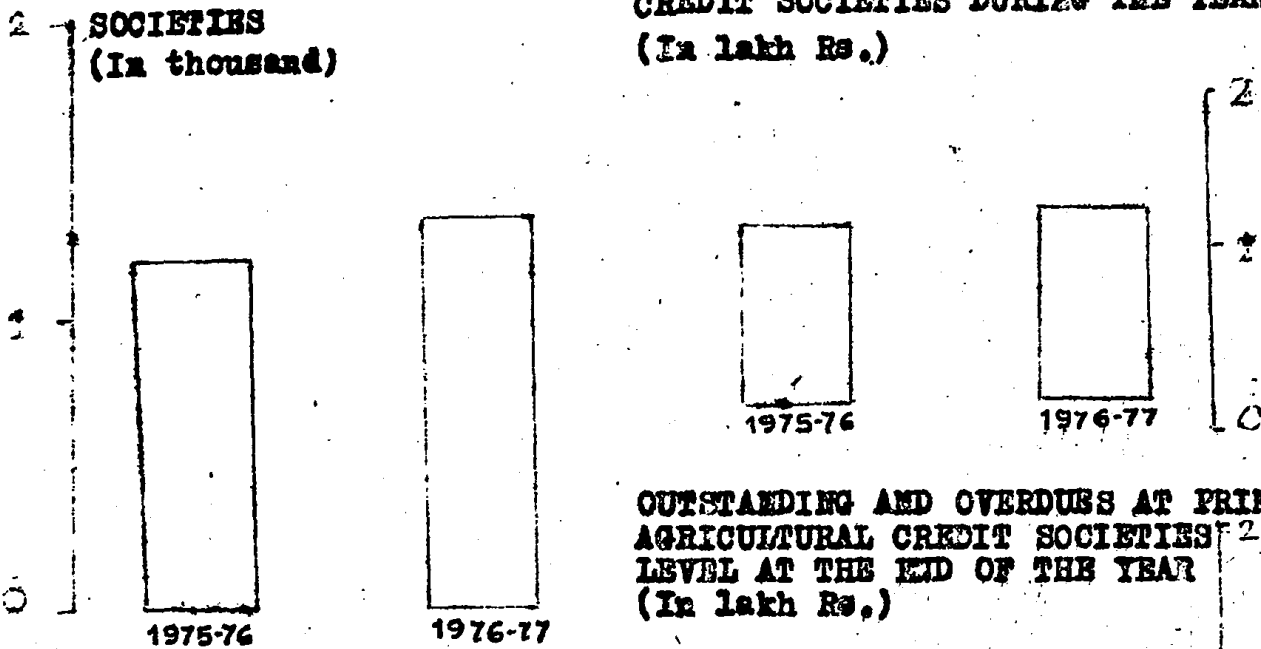


FALLOW LAND

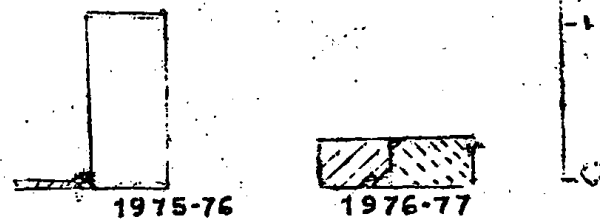
GROWTH OF CO-OPERATION GREATER BOMBAY.

(1975-76 and 1976-77)

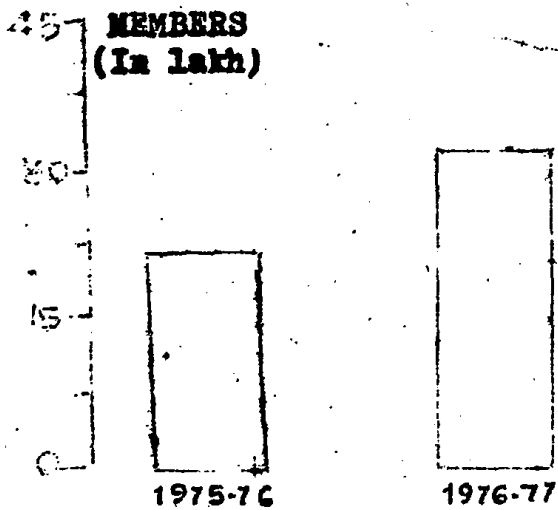
ADVANCES BY PRIMARY AGRICULTURAL CREDIT SOCIETIES DURING THE YEAR.
(In lakh Rs.)



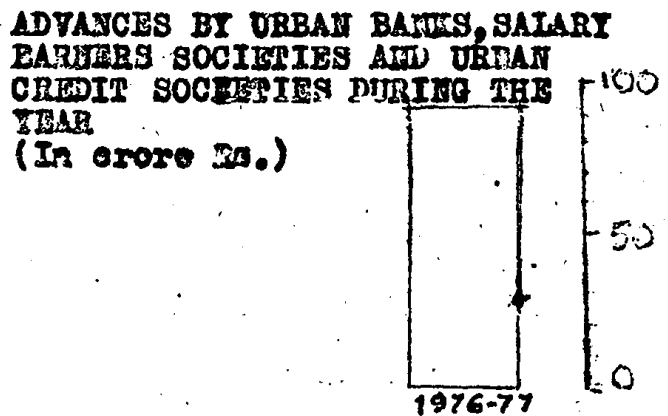
OUTSTANDING AND OVERDUES AT PRIMARY AGRICULTURAL CREDIT SOCIETIES LEVEL AT THE END OF THE YEAR
(In lakh Rs.)



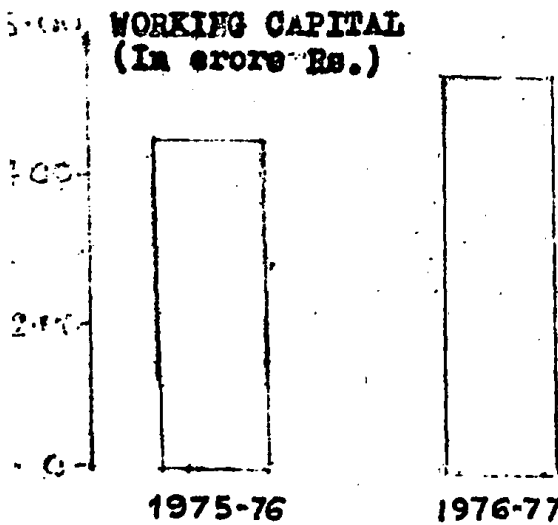
MEMBERS (In lakh)



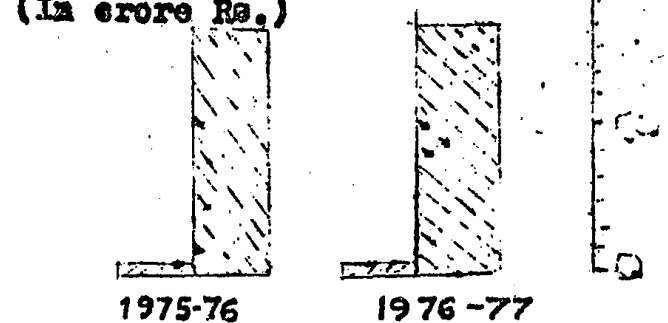
ADVANCES BY URBAN BANKS, SALARY EARNERS SOCIETIES AND URBAN CREDIT SOCIETIES DURING THE YEAR
(In crore Rs.)



WORKING CAPITAL (In crore Rs.)



OUTSTANDING AND OVERDUES AT URBAN BANKS, SALARY EARNERS SOCIETIES AND URBAN CREDIT SOCIETIES LEVEL AT THE END OF THE YEAR
(In crore Rs.)



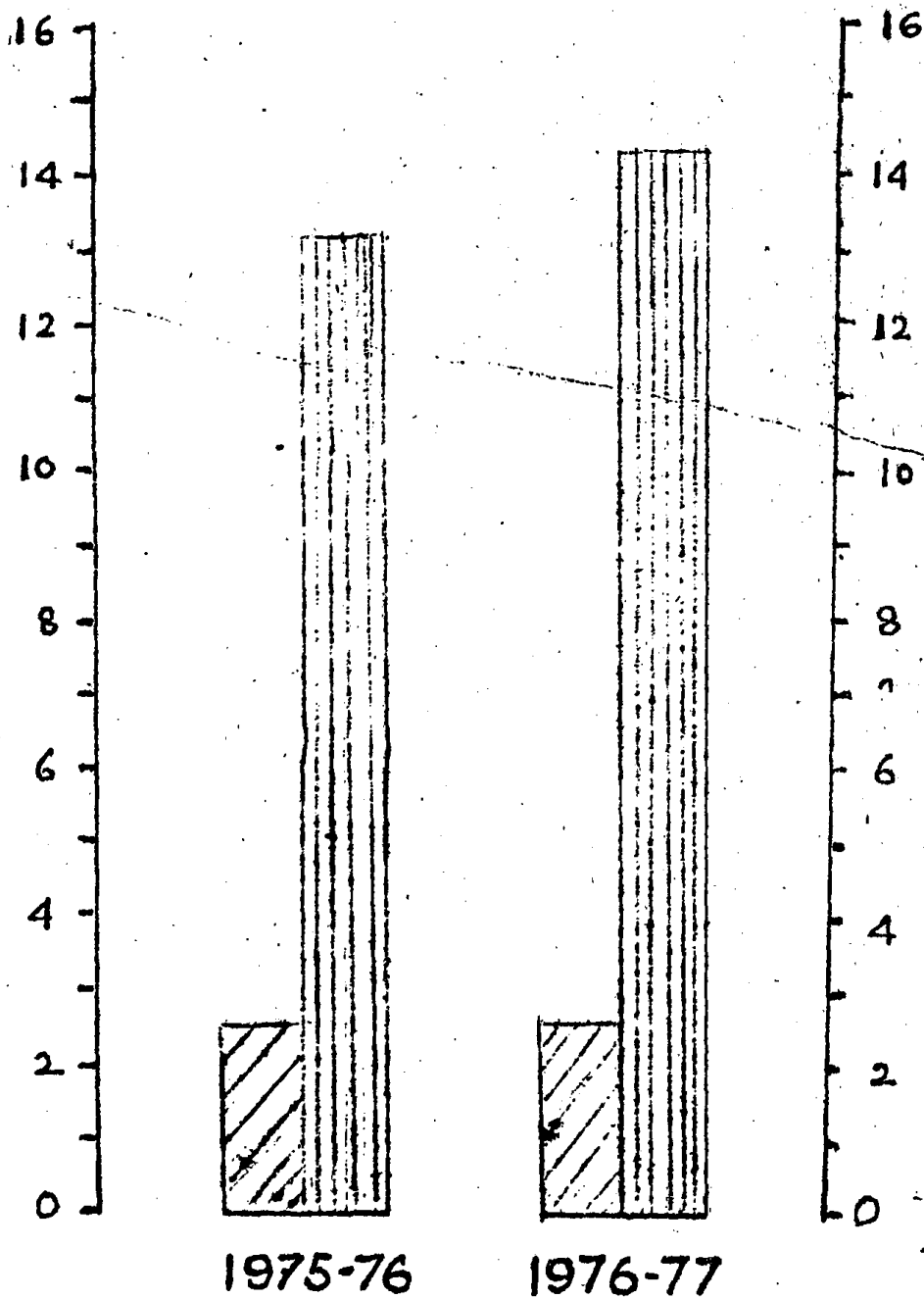
OUTSTANDING **OVERDUES**

EDUCATION INSTITUTIONS & ENROLMENT

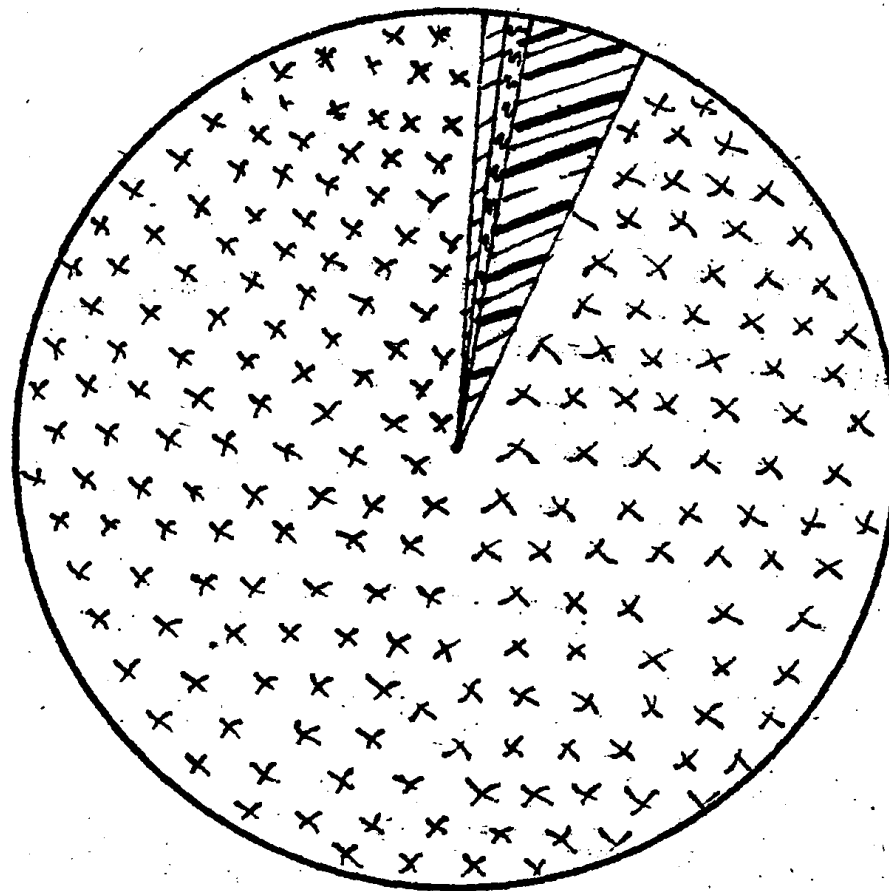
1975-76 , 1976-77

GREATER BOMBAY

▨ NO. OF INSTITUTIONS (IN '000)
▤ NO. OF STUDENTS (IN LAKHS)



PLAN EXPENDITURE UNDER DIFFERENT HEADS DURING THE YEAR 1976-77 IN GREATER BOMBAY



AGRICULTURAL PROGRAMME



INDUSTRY & MINING



TRANSPORT & COMMUNICATION



SOCIAL SERVICES

CONSUMER PRICE INDEX NUMBERS FOR WORKING CLASS (NEW SERIES)

--- FOOD

— ALL COMMODITIES GREATER BOMBAY

BASE YEAR 1960=100

