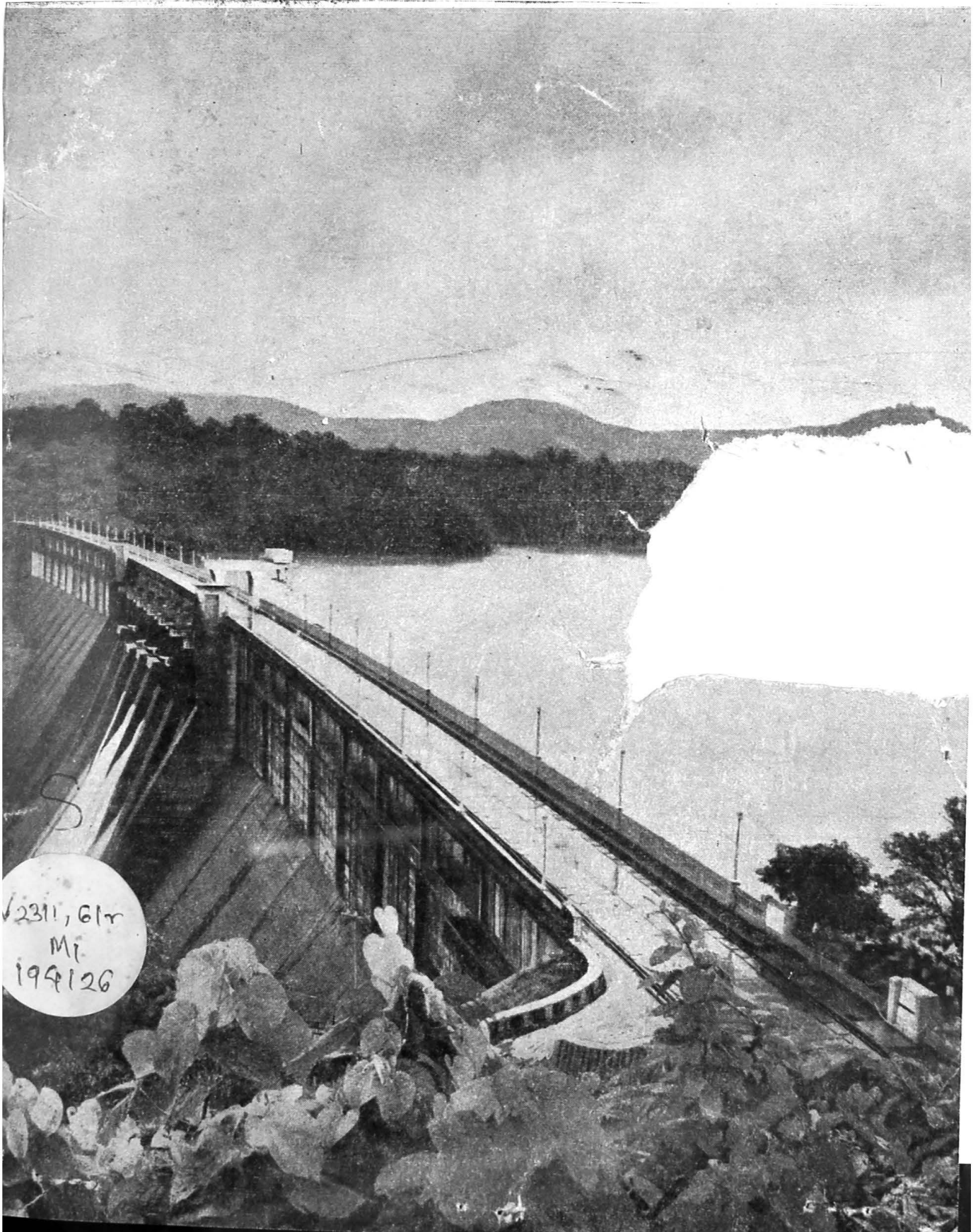


244



Administration Report of the Municipal Commissioner for Greater Bombay 1980-81

City, Suburbs and Extended Suburbs





**Administration Report of
the Municipal Commissioner
for Greater Bombay
1980-81**

City, Suburbs and Extended Suburbs

CONTENTS

	PAGE
COMMISSIONER'S REPORT	i
ACCOMPANIMENTS	
1.—GENERAL	1-9
GENERAL ADMINISTRATION—	
2.—Ward Offices	10
3.—Central Control Room	10
4.—O. & M. Division	10
5.—Public Relations and Civic Journal	11-12
6.—W. O. (B. C. Cell)	13-14
7.—Vigilance Branch of Engg.	15
8.—Labour Department	16-18
9.—Legal Department	19-20
10.—Central Stores	21-22
11.—Enquiries	23
12.—Security Force	24-25
13.—Printing Press	26-28
14.—Rota Printing Unit	29
15.—FINANCE	30-95
16.—REVENUE AND ELECTIONS	97-107
17.—EDUCATION	109-120
18.—PUBLIC HEALTH	121-136
MEDICAL RELIEF AND EDUCATION—	
19.—K. E. M. Hospital and Seth G. S. M. College	137-178
20.—B. Y. L. Nair Charitable Hospital and T. N. M. College	179-223
21.—L. T. M. G. Hospital and Medical College	225-241
22.—Nair Hospital Dental College	243-252
23.—G. T. B. Hospital and Clinics	253-258
24.—Seth A. J. Bankebihari E. N. T. Hospital	259-260
25.—Rajawadi Hospital, Ghatkopar	261-272
26.—K. B. Bhabha Hospital, Bandra	273-278
27.—R. N. Cooper Hospital, Juhu	279-293
28.—H. B. M. G. Hospital, Borivali	294-298
29.—ENGINEERING	299-331
30.—ESTATE & LAND MANAGEMENT (W. O. (E.))	333-342
31.—FIRE BRIGADE	343-353
MARKETS & SLAUGHTER HOUSES—	
32.—W.O. Markets	355-356
33.—Deonar Abattoir	357-358
34.—LICENCES DEPARTMENT	359-361
35.—SHOP & ESTABLISHMENT DEPARTMENT	363-364
RECREATIONAL ACTIVITIES—	
36.—Gardens and Open Spaces	365-366
37.—Libraries	367
38.—Museum	368
39.—Swimming Pools	369
40.—Birla Krida Kendra	370