



ADMINISTRATION REPORT

OF THE

MUNICIPAL COMMISSIONER

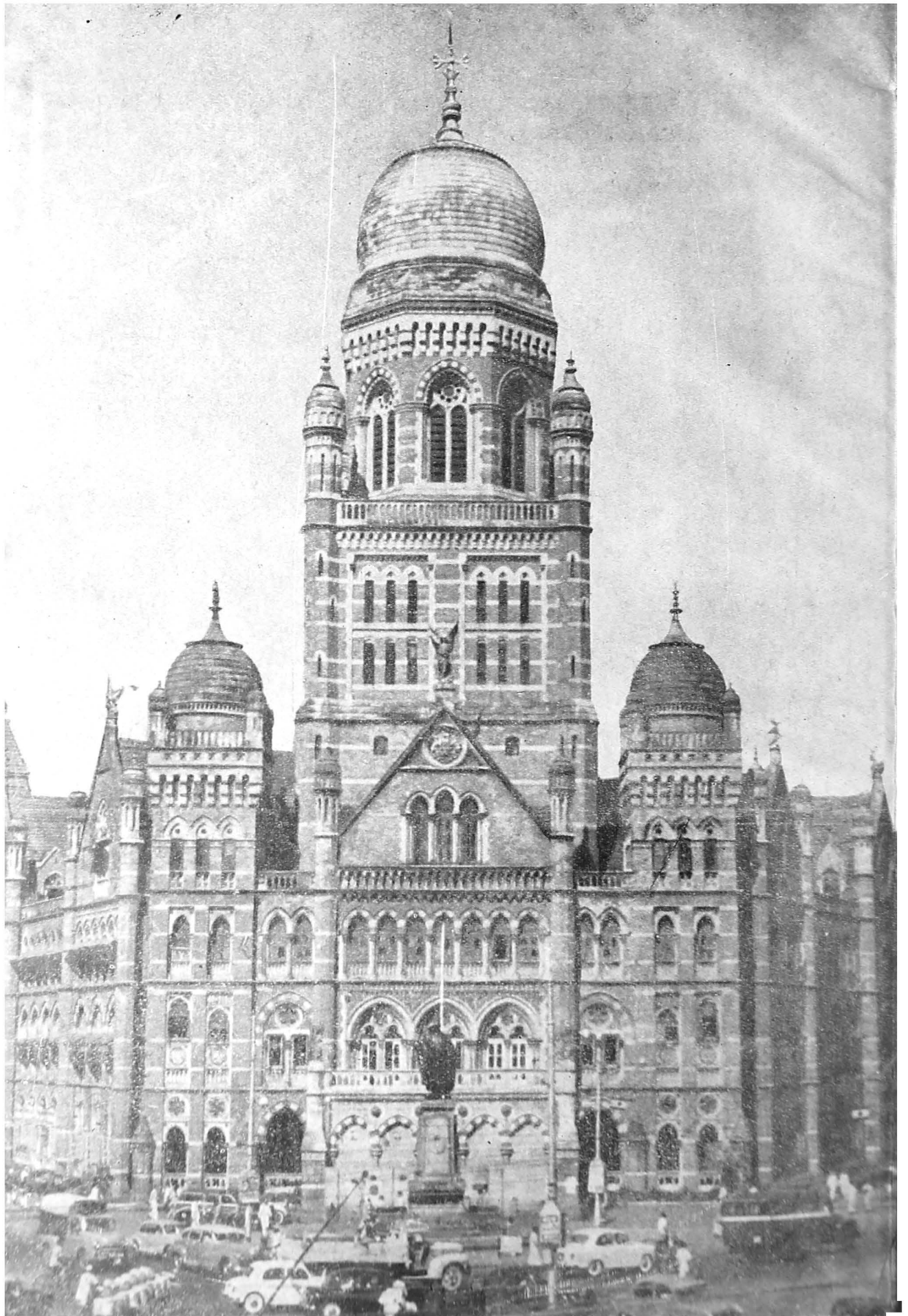
FOR

GREATER BOMBAY

For the Year 1966-67

CITY, SUBURBS AND EXTENDED SUBURBS

BOMBAY
PRINTED AT THE MUNICIPAL PRINTING PRESS
1968



MUNICIPAL HEAD OFFICES



ADMINISTRATION REPORT
OF THE
MUNICIPAL COMMISSIONER
FOR
GREATER BOMBAY
For the Year 1966-67

CITY, SUBURBS AND EXTENDED SUBURBS

BOMBAY
PRINTED AT THE MUNICIPAL PRINTING PRESS
1968 .

CONTENTS

	PAGE
STANDING COMMITTEE'S REVIEW OF THE REPORT	i—xxii
COMMISSIONER'S REPORT	i
Accompaniments	
1. GENERAL	1
Report of the Chief Complaints Officer	6A
Report of the Manager, Birla Kreedra Kendra	6A
2. FINANCIAL :—	
Report of the Chief Accountant, with Appendices	7-80
3. REVENUE :—	
Report of the Assessor and Collector	81-90
4. ELECTIONS :—	
Report of the Dy. Assessor and Collector (Octroi)	91
5. PUBLIC WORKS :—	
Report of the Dy. Project Engineer—Water Supply	93-103
6. REPORT OF THE CITY ENGINEER	105-150
7. ADMINISTRATIVE OFFICER (ESTATES)	151-163
8. WATER WORKS :—	
Report of the Hydraulic Engineer	165-188
9. FIRE BRIGADE :—	
Report of the Chief Officer	189-197
10. GARDENS :—	
Report of the Superintendent	199
11. VICTORIA AND ALBERT MUSEUMS :—	
Report of the Curator	201
12. MUNICIPAL LIBRARIES	203
13. CENTRAL STORES :—	
Report of the Controller of Stores	205-207
14. LICENCES, SHOPS AND ESTABLISHMENTS :—	
Report of the Superintendent	209-216
15. MARKETS AND SLAUGHTER HOUSES :—	
Report of the Superintendent	217-221
16. PRINTING PRESS :—	
Report of the Manager	223-225
17. SETH G. S. M. COLLEGE AND K. E. M. HOSPITAL :—	
Report of the Dean	227-244
E. N. T. HOSPITAL :—	
Report of the Asstt. Medical Officer	245-246
18. BAI YAMUNABAI L. NAIR CHARITABLE HOSPITAL AND TOPIWALA NATIONAL MEDICAL COLLEGE	247-258
19. NAIR HOSPITAL DENTAL COLLEGE	259-260
20. L. T. MUNICIPAL GENERAL HOSPITAL, SION, AND ANNAPURNABAI DESHMUKH HOSPITAL FOR WOMEN	261-265
21. GROUP OF T. B. HOSPITALS, SEWRI	267-268
22. LEGAL REPORT OF THE SOLICITOR TO CORPORATION	269
23. EDUCATION :—	
Report of the Education Officer	271-278
24. LABOUR :—	
Report of the Labour Officer	279-284
25. Public Relations Officer...	285
26. Mahatma Gandhi Memorial Olympic Swimming Pool	287
27. Report of the Administrative Officer (Enquiries)	289-291
28. Report of the Editor, the Bombay Civic Journal	293
29. Report of the Organizer and Methods Officer	295
30. PUBLIC HEALTH :—	
Report of the Executive Health Officer	297-320

**REVIEW OF THE STANDING COMMITTEE OF THE ADMINISTRATION
REPORT OF THE MUNICIPAL COMMISSIONER FOR GREATER
BOMBAY FOR THE YEAR 1966-67.**

The Administration Report submitted by the Municipal Commissioner, gives in detail the working of the various Municipal Departments for the year 1966-67.

CORPORATION

2. Shri S. R. Patkar was elected Mayor of Bombay for the year under report and he continued to hold that office throughout the year. Shri Taherbhoy E. Kachwalla was the Chairman of the Standing Committee, Dr. J. M. Lakhani, was the Chairman of the Improvements Committee and Shri A. M. Mandekar was the Chairman of the Education Committee for the year under report and they continued to hold their respective offices throughout the year.

Commissioner.

3. Shri J. H. Patwardhan held the post of Municipal Commissioner with effect from 16th April 1966 and continued throughout the year under report.

Complaints Section.

Complaints received from the public about repairs to buildings, water supply, drainage, sanitation, etc. Complaints were referred to the departments concerned, systematically followed up and the complainants were contacted if required in order to see that their grievances were redressed within a reasonable time. The Standing Committee feels that economy in the cost could be effected if Officers in the section are replaced by clerks.

Birla Kreedra Kendra.

Reservation of the Kendra by the public for various cultural activities commenced from 17th January 1966, the date from which the premises licence was granted by the Commissioner of Police. During the year under report, an amount of Rs. 64,412 was collected by way of revenue.

Documentaries and demonstrations of the electric toy trains, etc., were shown free of charge to the Municipal school children in the two halls for children.

FINANCIAL

4. The financial transactions have resulted in a surplus of Rs. 4,43.87 lakhs at the end of the year instead of the anticipated surplus of Rs. 1,60.63 lacs. This was due to the fact that the actual expenditure decreased by Rs. 2,55.67 lakhs over the Revised Budget Estimates while the income increased by Rs. 27.57 lakhs over the revised budgeted amount.

The Standing Committee desires that adequate care should be taken in framing the estimates so as to make them realistic and also to avoid a large number of proposals for additional grants during the year.

Variation in Income.

5. In preparing the Budget Estimates for the year under report, an Opening Cash Balance of Rs. 4,40.68 lakhs was estimated. On the final closing of the accounts for the previous year, the actual Opening Balance for the year under report amounted to Rs. 3,50.24 lakhs. The total income budgeted for was Rs. 33,04.90 lakhs, while the actual realizations amounted to Rs. 37,20.64 lakhs. On the expenditure side, the amount budgeted for was Rs. 32,37.72 lakhs whereas the actuals of expenditure were Rs. 32,76.76 lakhs.

Loan Funds

6. The Opening Balance on 1st April 1966 on account of Loan Funds excluding of Trust Funds was Rs. 1,76.05 lakhs for the City, Rs. 84.55 lakhs for the Suburbs inclusive of the Trust Funds and Rs. 24.99 lakhs for the Extended Suburbs. Loans aggregating to

Rs. 9,20.62 lakhs for the City, Rs. 1.25 lakhs for the Suburbs and Rs. 90 lakhs for the Extended Suburbs were raised during the year.

The total Loan Funds available for expenditure during the year were Rs. 10,96.71 lakhs for the City, Rs. 2,09.55 lakhs for the Suburbs and Rs. 1,15.05 lakhs for the Extended Suburbs.

The actual expenditure amounted to Rs. 10,12.14 lakhs for the City, Rs. 1,58.04 lakhs for the Suburbs and Rs. 73.37 lakhs for the Extended Suburbs on Capital Works as against the budgeted figure of Rs. 20,36.32 lakhs for the City, Rs. 3,42.84 lakhs for the Suburbs and Rs. 1,75.55 lakhs for the Extended Suburbs.

Sinking Funds

7. The Book Value of investments of the Sinking Fund at the close of the year amounted to Rs. 18,11.76 lakhs for the City, Rs. 4,05.29 lakhs for the Suburbs and Rs. 68.91 lakhs for the Extended Suburbs, made up of the book value of securities and the amounts in cash with the State Bank of India. Valuing the Municipal and Improvement Trust Debentures at par, the market value of the Sinking Fund Investments held on 31st March 1967 came to Rs. 17,98.47 lakhs for the City, Rs. 4,00.75 lakhs for the Suburbs and Rs. 68.91 lakhs for the Extended Suburbs. The total amount of Sinking Fund thus inclusive of the interest accrued and cash with the Bank came to Rs. 18,13.90 lakhs for the City, Rs. 4,08.31 lakhs for Suburbs and Rs. 70.06 lakhs for the Extended Suburbs, the excess in the Sinking Fund Account being Rs. 1,01.01 lakhs for the City, Rs. 17.68 lakhs for the Suburbs and Rs. 1.91 lakhs for Extended Suburbs, respectively.

Improvement Schemes Account, General Account, Income and Expenditure

8. The total income for the City for the year amounted to Rs. 2,05.28 lakhs against Rs. 1,88.06 lakhs for the previous year, showing a net increase of Rs. 17.22 lakhs. The main increases were in respect of (i) Rent and other proceeds of properties—Rs. 1.51 lakhs ; (2) Contribution from Municipal Corporation Rs. 4.71 lakhs, counter balanced by decreases (i) under Grant-in-Aid from Government for meeting the deficit in the General Account Rs. 10 lakhs; and (ii) Interest and profit on investment Rs. 1.47 lakhs and (iii) Miscellaneous Receipts—Rs. 0.48 lakh.

The total expenditure for the City for the year, viz., Rs. 1,98.76 lakhs as against Rs. 1,81.64 lakhs for the previous year, showed an increase of Rs. 17.12 lakhs on that of the previous year. This is made up of increase of Rs. 10.06 lakhs under maintenance of properties and streets and Rs. 7.05 lakhs under Debt Charges.

The Surplus of Rs. 6.52 lakhs in General Account is transferred to Capital Account.

Loan Account

The loan liability at the beginning of the year was Rs. 69,92.39 lakhs. The repayment of loan during the year was Rs. 4,03.24 lakhs of which Rs. 62.91 lakhs were repaid to Government and Rs. 2,93.79 lakhs to the debenture holders. The outstanding liability on loan account at the close of the year stood at Rs. 74,41.58 lakhs.

Capital Account

The year began with an Opening Balance of Rs. 67.02 lakhs. In the course of the year, receipts on account of Sale Proceeds of Lands and Buildings amounted to Rs. 2.85 lakhs and a Loan of Rs. 50 lakhs was raised. The total funds thus available were Rs. 1,19.88 lakhs. The total expenditure incurred amounted to Rs. 59.97 lakhs. The surplus in the General Account for the year which amounted to Rs. 6.52 lakhs, was transferred to the Capital Account. The unspent balance at the close of the year was Rs. 66.44 lakhs.

The actual expenditure during the year on schemes amounted to Rs. 59.97 lakhs as against the Revised Estimates of Rs. 2,05.78 lakhs including Rs. 11.30 lakhs on account of the cost of Management and Establishment.

Sinking Fund in Improvement Schemes Account

The amount of Sinking Fund on 31st March 1967 was Rs. 7,14.20 lakhs including cash with the State Bank of India. Valuing the Municipal and Trust debentures at par, the market value of Sinking Fund Investments at the end of the year under review amounted

to Rs. 7,15.88 lakhs. This together with interest accrued upto 31st March 1967, viz., Rs. 1.78 lakhs and cash with the State Bank of India brought the total amount of Sinking Fund to Rs. 7,17.67 lakhs against Rs. 5,74.57 lakhs, the amount to which the Sinking Fund should have accumulated at the close of the year. The excess in the fund thus amounted to Rs. 1,43.09 lakhs.

The Gross Capital Liabilities of the Improvement Schemes in the City stood at Rs. 16,29.95 lakhs at the close of the year under review and the assets at Rs. 37,13.60 lakhs including the book value of funds comprised in Schedules 'W' and 'X', resulting in a Surplus of Rs. 20,83.66 lakhs.

General Account, Slum Clearance—City and Suburbs

The total income during the year under Slum Clearance, City Section, amounted to Rs. 10.84 lakhs against Rs. 13.39 lakhs in the previous year showing the net decrease of Rs. 2.54 lacs. This is made up of increase of Rs. 0.19 lacs under Rent and other proceeds of properties and decrease Rs. 2.73 lacs under Interest and Profits on investment.

The expenditure on this account during the year amounted to Rs. 19.71 lacs consisting of Rs. 7.26 lacs on Maintenance of Properties and Streets and Rs. 12.45 lacs on Debt Charges resulting in a deficit of Rs. 8.86 lacs at the close of the year which was made good from the Capital Account.

The total income during the year under Slum Clearance, Suburban Section, amounted to Rs. 2.89 lacs as against Rs. 1.67 lacs in the previous year showing a net increase of Rs. 1.22 lacs. This is made up of increase of Rs. 1.13 lacs under Rent and other proceeds of Properties, and Rs. 0.9 lakhs under interest and profits on investment.

The expenditure during the year on this account amounted to Rs. 7.17 lakhs made up of Rs. 0.91 lakh under maintenance of Properties and Streets and Rs. 6.26 lakhs under Debt Charges. The net deficit of Rs. 4.28 lakhs was transferred to Capital Account.

Capital Account, Slum Clearance—City.

The Opening Balance under Capital Account, Slum Clearance, City, on 1st April 1966 was Rs. 14.93 lakhs. An amount of Rs. 9.27 lakhs was received from Government as loan and Rs. 12.24 lacs as grant-in-aid. Thus the total funds available for expenditure amounted to Rs. 86.44 lakhs, against which the expenditure incurred during the year amounted to Rs. 19.04 lakhs. The deficit in the General Account amounting to Rs. 8.86 lacs was transferred to Capital Account and Rs. 3.07 lakhs received in excess as Loan during 1959-60 were transferred to Suburb's Capital Account. The unspent balance at the close of the year stood at Rs. 55.47 lakhs.

Capital Account, Slum Clearance—Suburbs.

The Opening Balance under Capital Account, Slum Clearance, Suburbs, on 1st April 1966 was Rs. 22.87 lakhs. Rs. 2.47 lakhs were received from Government as loan, an amount of Rs. 0.62 lakh was received as sale proceeds of Lands and Buildings and Rs. 3.63 lacs as subsidy and Rs. 3.07 lakhs was transferred from the City Capital Account. A loan of Rs. 50 lakhs was raised from public. The total funds available for expenditure thus amounted to Rs. 82.65 lakhs against which expenditure incurred during the year amounted to Rs. 53.25 lakhs and deficit in the General Account amounting to Rs. 82.65 lakhs was met out of the Capital Account leaving an unspent balance of Rs. 25.12 lakhs.

The Standing Committee is much concerned to find such huge surplus under Slum Clearance Account of the Suburban areas especially as the Suburban areas which came under the control of the Corporation only a few years back are much backward and are in a great need of planned development. The slum areas in Suburbs require immediate attention in order that the evil of slum life is eradicated from these areas before it takes a gigantic form as in the City today. In this context, huge surplus balance under this account is not at all a healthy sign and indicates want of necessary foresight in City Planning and Development on the part of the executive. The Standing Committee, therefore, desires to alert the Executive in proper time and hope that the executive will be more vigilant and resourceful to spend all available funds under this account in years to come.

Education Fund.

9. The actual income for the year amounted to Rs. 5,96.99 lakhs resulting in an increase of Rs. 39.34 lakhs on the Budget Estimates and an increase of Rs. 1.26 lakhs on the Revised Estimates. The rate of Education Cess was 2½ per cent. of rateable value on

buildings and lands, the rateable value of each of which was not less than Rs. 300 per annum and 2 per cent. of the rateable value on buildings and lands, the rateable value of each of which was less than Rs. 300 per annum but not less than Rs. 75 per annum.

That total expenditure for the year amounted to Rs. 6,02.77 lakhs against the Budget Estimates of Rs. 6,09.17 lakhs.

The Opening Balance on account of Loan Funds excluding Trust Funds on 1st April 1966 was Rs. 84.09 lakhs. A new loan of Rs. 100 lakhs was proposed for 1966-67 but actually a loan of Rs. 50 lakhs was raised during the year. The total loan funds thus available amounted to Rs. 1,34.09 lakhs against which expenditure booked on loan funds amounted to Rs. 34.61 lakhs. An advance for purchase of furniture for new school buildings amounted to Rs. 61,424.7 lakhs out of which Rs. 4.60 lakhs were recouped. The closing balance at the end of the year in loan funds amounted to Rs. 1,03.45 lakhs.

The percentage of actual expenditure on Loan Works to the Loan Funds available was 26. The Standing Committee again note with concern the Executive's inability to expend the loan amounts sanctioned by the Corporation within the scheduled limit and hope that more strenuous efforts will be put in to augment the Loan Works Programme especially as a large number of Municipal schools is located in private premises which are quite unsuitable for imparting instruction and further as the accommodation is insufficient to provide for the increasing number of pupils seeking admission to our schools and as a result whereof quite a large number of our schools are forced to meet in two shifts.

Taxation, Demands, Collection and Outstanding.

10. During the year under report, the rates of taxation in the City, Suburbs and Extended Suburbs remained the same as in the previous year. The rates of taxation thus stood as follows :—

General Tax (including Fire Tax) at 24.75 per cent. Water Tax at 4.50 per cent. and Halalkhore Tax at 3.50 per cent. Tax on vehicles and animals was levied at the maximum rates mentioned in Schedule 'G' of the Bombay Municipal Corporation Act. Rates charged for the supply of water by meter measurement ranged between Rs. 1.70 to Rs. 5.50 per 10,000 litres according to the class of properties.

Education Cess was levied at a graduated scale. No Education Cess was levied on Properties having a rateable value below Rs. 75. The demand in respect of this cess in the City, Suburbs and Extended Suburbs was for Rs. 67,41,262.84, 56,33,521.72 and 18,84,704.52 with the collection amounted to Rs. 52,21,325.74, 27,78,153.52 and 8,76,347.29.

On the Assessment Register at the close of the year, there were 77,469, 70,065 and 31,459 properties in the City, Suburbs and Extended Suburbs, respectively. 73,790 properties in the City, 67,675 in the Suburbs and 30,508 in the Extended Suburbs were assessed to General Tax, while 1,864 properties in the City, 2,390 in the Suburbs and 951 in the Extended Suburbs were exempted from the General Tax, under Section 143(1)(a) and (b) of the Bombay Municipal Corporation Act, while the Municipal properties exempted from the General Tax numbered 1,815.

The number of properties accounted for as newly erected, demolished and enlarged during the year was 2,013,346 and 1,094, respectively, the corresponding figures for the preceding year being 3,180,605 and 1,064. The figures for Suburbs and Extended Suburbs stood at 3,922, 3,511 and 286 and 1,544, 1,449 and 307, respectively.

The rateable value of all properties in the City on 31st March 1967 was Rs. 38,85,93,154 in the City, Rs. 15,10,10,810 in the Suburbs and Rs. 4,84,61,395 in the Extended Suburbs as against Rs. 37,02,74,639, Rs. 13,36,48,380 and Rs. 4,22,35,308 in the preceding year. It worked, out to Rs. 140.19, 145.73 and Rs. 140.96 per head of population as per the census of 1961 against Rs. 133.58, Rs. 128.99 and Rs. 122.88 in the preceding year.

Wheel tax in respect of hack-victorias, labour carts and hand carts was levied at Rs. 100, Rs. 35 and Rs .6, respectively.

The total number of bills in respect of property taxes and wheel tax issued during the year was 1,39,855 and 2,74,508 respectively for the City, 1,40,978 and 51,725 for the Suburbs and 63,439 and 9,548 for the Extended Suburbs. The total number of bills for water charges by meter measurement issued during the year by the Hydraulic Engineer was 37,756 for the City, 53,288 for the Suburbs and 18,363 for the Extended Suburbs. As regards property taxes, out of the net demand of Rs. 20,20,03,227 an amount of Rs. 19,00,67,954 was collected

leaving the amount of Rs. 1,19,35,273 as outstanding, percentage of which to net demand comes to 18.96 for the City ; the figures for Suburbs for net demand and collection stood at Rs. 10,23,76,369 and Rs. 8,68,32,318 leaving the balance at Rs. 1,55,44,051 and percentage at 63.20. The net demand and collection in the Extended Suburbs stood at Rs. 2,74,55,004 and Rs. 2,11,85,447 leaving the balance at Rs. 62,69,557 and percentage at 61.56.

In the case of Wheel tax in the City, the net demand was for Rs. 2,02,90,856 and the amount collected was Rs. 74,93,443, thus leaving an amount of Rs. 1,27,97,413 as outstanding, the percentage of which to net demand comes to 63.04. As regards Suburbs and Extended Suburbs, the net demand was Rs. 17,86,730 and Rs. 3,00,461 the collection at Rs. 7,09,050 and Rs. 1,37,982 and the percentage at 60.30 and 54.07, respectively.

2,071 complaints under Section 167 of the Act against the rateable values amounting to Rs. 3,40,76,214 and 1,831 complaints under Section 162 against the value amounting to Rs. 2,81,54,518 were disposed of during the year under report. The total number of complaints in the Suburbs and Extended Suburbs under the aforesaid Sections was 4,067 and 1,919, respectively.

The Urban Immovable Property Tax.

This tax was abolished from 1st April 1963. The arrears of the tax on 1st April 1966 were Rs. 15,98,658.97, Rs. 8,97,835.41 and Rs. 6,84,043.53 for the City, Suburbs and Extended Suburbs, respectively. Out of this amount, a sum of Rs. 17,28,711.56, Rs. 1,87,148.77 and Rs. 1,09,174.98, was collected.

The Standing Committee has expressed anxiety about the huge arrears of taxes due from Government and public bodies and desire that ways and means should be found out to recover in advance at least three fourths of the taxes due in case the claim is disputed.

Theatre Tax.

11. There were in all 40 Class I and 20 Class II Cinema Theatres in the City and 26 and 8 Cinema Theatres in Suburbs and Extended Suburbs, respectively, out of which 16 and 3 were Class I Cinema Theatres and the remaining were Class II Cinema Theatres. The tax was generally received regularly. Theatre Tax was also recovered in respect of various dramatic performances, dances, variety entertainments, etc., held at various places in Greater Bombay where admission was on payment.

The rates of Theatre Tax for the year under report were Rs. 10 per show for Class I Cinema Theatres, Rs. 7 per show for Class II Cinema Theatres, Rs. 7 per show for Drama, Concert, Variety Entertainment or Tamasha, Rs. 10 per day for Circus, Carnival or Fete and Rs. 7 per show for any other entertainment. The total income derived by way of Theatre Tax during the year under report was Rs. 7,51,565 in the City, Rs. 2,08,540.70 in the Suburbs and Rs. 81,397.20 in the Extended Suburbs.

Exemption from payment of Theatre Tax was granted to such Cinema shows, performances, etc., as were held in aid of bonafide charities or directed towards advancement of cultural or educational activities and exempted from payment of Entertainment Duty leviable by the Commissioner of Police under the Bombay Entertainments Duty Act, 1923.

The Standing Committee note with concern the high persistent percentage of outstanding and hope that vigorous efforts will be made and if necessary, the collection machinery remodelled in order to reduce the outstandings to the minimum possible extent as the revenue collection is the mainstay of Municipal finance and hence also of the Civic Administration of this great City.

OCTROI.

12. The same rates of Octroi as specified in the Octroi Schedule 'H' to the B.M.C. Act as amended, continued for the year under report. However entry 22 of the Octroi Schedule was amended under the provisions of Maharashtra Act XXVII of 1966 to effect a change in the Sub-Clauses of the entry and without revising the rate of Octroi. The Corporation also revised the rates of Octroi on 30-1-1967, on Calves to 50 paise per head under their Resolution No. 1603, the effect to the above amendments was given from 1-4-1967. The gross collections from Octroi during the year amounted to 11,91,32,931 lakhs as against Rs. 7.37 lakhs from the Octroi in the preceding year. The amount refunded during the year under review was Rs. 1,25,77, lakhs as against Rs. 64.65 lakhs, in the previous year. Octroi gave a net revenue of about Rs. 49,315 lakhs as against Rs. 64.65 lakhs given by Octroi in the previous year. The total number of claims for refund was 59,334 as against 49,315 in the previous year.

Fees for stamping sugar bags, tea cases, etc., amounted to Rs. 14.27 lakhs against Rs. 18.07 lakhs in the preceding year.

Elections.

13. As per the provisions of the B.M.C. Act, relating to Election amended under the provisions of the Maharashtra Act No. VIII of 1965, the next Municipal General Elections, are to be held early in 1968 on the basis of 140 single member constituencies.

VAITERNA-CUM-TANSA SCHEME.

14. Further awards for compensation for acquisition of lands in connection with the major works of the Scheme amounting to Rs. 1,96,880 were declared by the Acquisition Officers.

MASTER PLAN FOR THE DISTRIBUTION OF WATER SUPPLY.

Worli Hill Reservoir was commissioned during the year and the work of construction of the Golanji Hill Reservoir was also completed.

Dahisar River Project.—Detailed plans and estimates for construction of dam and its appurtenant works along with a detailed project report were submitted to Corporation. While the tenders were under scrutiny the Government advised the Corporation to postpone the project for the present.

Upper Vaiterna Scheme.—Contracts for preparing formation for pipeline were awarded and the works are in progress.

The progress of the work in connection with Reservoir at Rawli Hill, Powai Hill, Pali Hill, Trombay Hill, Ghatkopar Hill, Veravali Hill was not as per Schedule.

The Irrigation and Power Department of the Government of Maharashtra prepared a detailed report on Bhatsai River Project. A three-man appraisal team from World Bank from whom loan has been sought for implementing the Project, inspected various sites of the Project and further investigations were made by the Consultants appointed by the State Government. Final report indicating the agency of implementing the Project is awaited.

The Standing Committee desire that all the Reservoirs should be completed and commissioned expeditiously in order to ensure equitable distribution of water supply and avoid hardships to citizens receiving supply, at odd hours at present.

The Government of Maharashtra permitted the Corporation to draw surplus water from Ulhas River. The Corporation approved the Scheme at a total cost of Rs. 2,88,70,000 which consists of pumping about 20 m.g.p.d. of raw water from Ulhas River. 67 acres of land required for the scheme was taken over by the Corporation from the Collector of Thana District.

Planning Section, Public Works.

15. The Architectural Planning Branch for the City, Suburbs and Extended Suburbs prepared in all 79 Plans, 9 Block Estimates and 55-Detailed Estimates costing Rs. 1,38,09,850 lacs and Rs. 2,26,24,523 lacs, respectively.

Municipal Properties.

16. The total number of properties both Municipal and *ex-Trust* maintained by the Maintenance Branch during the year was 13,712 as against 3,680 in the previous year. The amount spent on 497 buildings in the Suburbs and 158 in the Extended Suburbs for such works was Rs. 5,87,423 and Rs. 1,99,815, respectively. The work of upkeep and maintenance of buildings including school buildings was carried out partly by contracts and partly by departmental agency at a cost of about Rs. 33.44 lacs in the City and Rs. 9.07 lacs in the Suburbs and Extended Suburbs.

Construction.

During the year under report works estimated to cost Rs. 2,93.62 lacs were completed. Works estimated to cost Rs. 1,010.08 lacs were in progress.

Private Buildings.

17. During the year, 1,369 applications were received for the construction of new buildings or additions and alterations to the existing ones. The total number of new buildings constructed by private enterprise during the year was 203 of which 94 were residential and 109 non-residential; 21 buildings were constructed by Co-operative Societies. If proper

encouragement and guidance is given, the Standing Committee is confident that the Co-operative Housing will be of great help in solving the baffling housing problem. The Standing Committee is of the view that if incentive is given in the form of concession in taxes, it would serve as an impetus for building activities.

In the case of dilapidated houses, the issue of notices and launching of prosecutions continued as before. In all 10,372 notices were issued for repairs and/or removal of unsafe buildings. In deserving cases, where the owners resorted to delaying tactics or refused to comply with Municipal requisitions, authorisations under Section 499 of the Act, were given to tenants to carry out repair works and to recover reasonable expenses incurred by them from the rents. In 144 cases such authorities were given during the year as against 130 in the previous year and 2,214 tenants took advantage of it.

In 298 cases, departmental action had to be taken to pull down unsafe portions of buildings in the interest of public safety, as the owners failed to comply with the Municipal Requisitions meeting the cost in the first instance from the special provision made for the purpose in the Budget and an expenditure of Rs. 63,887 was incurred therefor.

During the year, 97 buildings or portions thereof collapsed. The total number of persons injured was 68 and those killed was 11. The estimated damage to property was Rs. 3.50 lacs.

Slum Clearance, Housing and Land Acquisition.

18. The various works under the Slum Clearance Schemes during the year were in progress.

Clearance of Municipal Slums.—By the end of the year, 13 Slums were cleared and redeveloped. Clearance and re-development of 5 slums in stages was in progress.

Tenements under the Government of India's subsidised Slum Clearance Scheme.—Under the Scheme, 6,516 tenements were sanctioned. Out of these, no tenements were completed during the year, bringing the total number of tenements completed upto 31st March 1967 to 3,875. Construction of 1,232 tenements was in progress on 31st March 1967.

Financial Assistance from Government under subsidised Slum Clearance Schemes.—The Corporation have received Rs. 11.74 lacs by way of loan and Rs. 15.87 lacs by way of subsidy from the Government during the year under report. The Corporation has thus so far received Rs. 1,04.95 lacs by way of loan and Rs. 1,29.22 lacs by way of subsidy upto 1st March 1967.

Six projects of Slum Clearance Scheme of total outlay of Rs. 116.688 lacs envisaging construction of 1,786 tenements in Greater Bombay were formulated and forwarded to Government for their sanction and Government sanction to this programme has since been received. The work in respect of 1,328 tenements was started, 120 tenements were completed, 700 tenements were in progress and 508 tenements were not taken up for various reasons during the year under report.

Drainage and Sewerage.

19. *Dadar Purification Works.*—The Sewage Purification works at Dadar functioned satisfactorily throughout the year under report. The total quantity of sewage received at the Plant during the year was 6,317.76 Million Gallons *i.e.*, an average of 17.30 M. G. per day. The total quantity of sludge gas generated during the year was 7,74,77,000 C. ft. The total revenue realised during the year by sale of gas amounted to Rs. 2,21,504 as against Rs. 2,27,602 during the previous year.

Love Grove Pumping Station and Purification Works.

The working of the old and new pumping stations was satisfactory during the year under report.

Dharavi Purification Works.

The Sewage Purification Plant worked normally. The revenue realised from the sale of gas supply amounted to Rs. 24,000 approximately.

Pumping and Compressor Stations and Ejectors.

The sewerage system of the City depends upon the satisfactory working of Pumping and Compressor Stations. Sewage from the sewerage system of the City was pumped through all pumping stations.

The work of laying sewers in various parts of the Suburbs and Extended Suburbs was in progress.

Transport.

20. During the year, 5,615 motor vehicles and 447 trailers (including Suburban fleet) were in commission.

The transport fleet for the removal of refuse consisted of 244 vehicles of different types. As this fleet was not sufficient to cope up with the daily output of refuse, extra vehicles from the Maharashtra State Transport Corporation and also from private agency had to be requisitioned for the removal of refuse. The average collection of refuse in the City worked out to 1,750 tons per day. The Standing Committee has noticed that the vehicles are not kept in proper condition and transport services often breakdown at inspections, and during delivery of agenda etc. papers to Councillors, etc.

Repairs and Maintenance of Roads and Footpaths.

21. The total mileage of roads in the City, Suburbs and Extended Suburbs at the end of the year was 93,919, 174.00 and 111.64, respectively.

The work of maintenance of roads and footpaths was generally satisfactory throughout the year.

The number of street lights increased from 15,304 to 16,987 in the City, 9,260 to 9,821 in the Suburbs and from 2,884 to 3,329 in the Extended Suburbs at an expenditure of Rs. 48,00,000 and Rs. 3,11,869, respectively.

The lighting of 7 roads was improved with HPMV lamps under the 'All-in-Hire Scheme' and 22 roads were improved with Fluorescent lamps under All-in-hire rate. 8 roads were provided with new lighting arrangements.

Removal of Town Refuse.

22. As in the past a major portion of the City refuse was transported to Deonar for disposal.

The total number of wagons sent to Deonar during the year under report was 22,696 as against 23,485 during the preceding year.

As the number of Municipal wagons was insufficient to transport the huge quantity of city refuse, 61 wagons were taken on hire from Western Railway during the year at the charges of Rs. 4.50 per wagon per day.

The cost of maintenance of Mahalaxmi and Chembur Siding was Rs. 25,485.

Town Planning Schemes.

23. No progress was made in case of Town Planning Scheme, Bombay City No. I (Mandvi and Elphinstone Estate). No alternative accommodation could be provided to tenants likely to be affected.

The implementation of Town Planning Scheme, Bombay City No. IV (Mahim Area) was in progress.

Some were at arbitration stage.

In the year under reference Special Consulting Surveyor appointed by the State Government to scrutinize the development plans for K, H, P, M and L Wards for Suburban Areas and all Wards of the City Proper along with the Development Control Rules and the Development Plan of Greater Bombay with Development Control Rules with various modifications was finally sanctioned by the State Government on 7th January 1967. The implementation of the sanctioned development plan was proceeded with the Development Control Rules were got printed and circulated. Copies of the Development Plan for various Wards in the City and the Suburban Areas are being prepared for the purpose of printing them for circulation and sale amongst the members of the public.

Conservancy.

24. Roads, footpaths and house gullies were swept twice daily. House gullies were flushed and roads were brushed and scrapped whenever necessary. The Standing Committee is of the opinion that the work of Sweeping roads should be completed early in the morning and steps must be taken to mechanize the service as far as possible. The total refuse collected and removed by engaging stationary as well as mobile traction was 6,38,750 tons in the City, 1,38,020 tons in Suburbs and the Extended Suburbs.

1,056 Actions were taken in Suburbs and Extended Suburbs under the Municipal Act and the Bombay City Police Act during the year for committing nuisance by throwing refuse in the streets or public places or fouling roads by urinating, etc.

There were in all 1,153 privy seats in the City. The work of removal of night-soil was attended to regularly by 5 cesspool lorries.

There were 158 public sanitary conveniences in the Suburbs and Extended Suburbs.

The number of basket privies existing was 10,682 as against 11,169 during the previous year. The reduction is due to the progress of sewerage schemes. In addition there were 4,071 cesspools.

Control of Stray Dogs.—31,004 stray dogs were caught and destroyed. The total income by way of dog licensing fees, etc., in the City was Rs. 55,172.45 as against Rs. 54,617.73 in the previous year.

The work of immunizing the milch cattle against Rinder Pest was continued and 45,599 milch cattle were inoculated as against 31,809 in the previous year. No cases of Rinder Pest were detected during the year.

In addition to the above, the Conservancy Branch also rendered special conservancy and halalkhore services to various circuses, exhibitions, fairs etc., in the City realising thereby Rs. 3,78,044.08. Besides Rs. 1,05,867 were paid by Government for services rendered for cleansing Government foreshores.

11,329 different kinds of tests were made by the Municipal Material Testing Laboratory during the year.

The Municipal Hot Mix Asphalt Plant at Worli worked for 275 days and remained closed for 90 days on account of rainy season. The number of boxes and tonnage turned out by the main plant and pegson plants were 34,041 boxes and 7,548 boxes, respectively.

The Crushers at Worli and Sewri worked satisfactorily during the year. The total output was 2,569 brass as against 3,248 brass in the previous year.

ESTATE AND LAND MANAGEMENT.

25. The Department continued to look after the work of preparation of layouts, etc., as before. There were no changes in the layout of *ex-Trusts* Estates.

The undeveloped land at present with the Corporation is approximately 494 acres which covers the land at Dharavi Scheme 56.

No plots in Municipal Scheme have been disposed of in the year 1966-67.

The total area available for disposal in Municipal laid out schemes on 1st April 1967 was about 3,182.30 sq. meters, but the same is required for Municipal purposes, and therefore, area available for disposal is nil.

The total number of plots disposed of upto the end of 1965-66 was admeasuring 16,557.05 sq. meters and valued at Rs. 4,200.

The amount received by way of commutation of ground rent and premium etc., during the year was Rs. 3,33,114 as against Rs. 4.20 lacs in the preceding year.

The collection on account of rents from the permanent chawls during the year amounted to Rs. 22,05,251. The revenue actually collected on account of rents in respect of S. P. Sheds came to Rs. 17,59,058. The figures in respect of slum clearance tenements and acquired premises stood at Rs. 14,50,122 and Rs. 10,57,923, respectively.

500 tenements were constructed at Falkland Road, Haines Road, Ghatkopar and Santacruz, during the year under Slum Clearance Scheme.

The recoveries of rent in the Squatters' Colonies at Mankhurd and Jogeshwari were Rs. 40,308 and Rs. 48,973 against the demand including the arrears of Rs. 14,90,118 and Rs. 4,49,252, respectively, and at Palton Road Dormitory amounted to Rs. 51,745, during the year.

During the year under review, the demand and recovery of taxes aggregated to Rs. 90,894 and Rs. 42,766, respectively. The arrears due for collection at the close of the year stood at Rs. 6,43,320.

The construction of Industrial Estates has been taken by the Corporation for rehabilitation of Industrial Units required to be shifted from the lands required for Municipal purposes. At the Clarke Road Industrial Estates 28 galleys for Industrial Estates were completed during the year.

Corporation have now permitted enclosures of open galleries or otlas free of charge.

Corporation used to charge the encroachment in the compulsory open spaces on pro-rata basis while the additional floors were charged at flat rate fixed by the Improvements Committee. However the Corporation have now decided to charge encroachments and additional floors alike on flat rates.

Corporation have now decided not to charge monsoon shelters on the private properties and on Municipal lands.

The Corporation have now permitted that any garage on municipal plot could be freely used for an ironing shop.

WATER SUPPLY.

26. The Tansa, Vaitarna, Vehar and Tulsi Lakes were the principal sources of the City's water supply.

The average daily supply to Greater Bombay during the year under report was about 917.86 mega litres as against 976.23 mega litres in the previous year. During the year, the quantity of water supplied to Greater Bombay was 3,35,033.55 mega litres as against 3,56,324.94 mega litres in the preceding year. Supply to the Thana Municipality, etc., was 5,232 mega litres as against 4,507.75 mega litres in the previous year. Total quantity of water supplied to bodies outside the limits of Greater Bombay was 11,789.00 mega litres as against 7,313.83 mega litres in the preceding year. Of the total supply to Greater Bombay, a quantity of 2,06,113.65 mega litres or 1154.19 per cent. was for domestic purposes as against 1,63,615.05 mega litres or 61.48 per cent. in the previous year. The average daily supply for all purposes per head in Greater Bombay was 187.20 litres, while that for domestic purposes only worked out to 61.52 litres. Percentage of total supply for domestic and other purposes worked out at 61.52 and 23.48, respectively.

The water from Powai Lake was used for non-potable purposes, viz., Irrigation and Aarey Colony stables.

The total number of water connections was 83,951 in the City, 26,650 in the Suburbs and 78,04 in the Extended Suburbs and new connections given were, respectively, 3,403, 2,198 and 884. The total number of meters maintained was 21,119. 456 metered stand pipes were given during the year. The total number of stand-pipes in the Suburbs and Extended Suburbs was 1,288.

As per the order of the Government of Maharashtra, No. IDC/2465-61144-IND/I of 16-10-1965, the work of fixing the quotas of water for each major industry was taken in hand. Quotas of 850 major industries were fixed till the end of the year.

The number of complaints about short supply, etc., were 38,676, 9,209 and 2,845 in the City, Suburbs and Extended Suburbs, respectively.

302 new properties were metered in the City during the year. The total revenue derived from water supply by meter measurement was Rs. 4,06,29,714 for the City as against Rs. 4,08,12,795.05 during the previous year. The total revenue collected from Suburbs by way of meter hire in initial stages was Rs. 20,000 and that from supply of water by meter measurement about Rs. 4,30,855. An amount of Rs. 10,03,318 was recovered by way of charges. The figures for Extended Suburbs for these items are Rs. 15,855, Rs. 11,02,792 and Rs. 1,80,879, respectively.

With the creation of new ward offices the work of distribution and maintenance was decentralised and the same was entrusted to Assistant Engineers for each of the Wards.

36 Areas of City and Suburbs experiencing extreme shortage of water supply were studied and boosting stations were provided during the year.

The Standing Committee, however, feel that further steps are required to be taken to ensure equitable distribution of water till resources are adequately augmented.

Fire Brigade Department.

27. During the year, the total number of Fire Stations was 14, viz., 11 in the City proper and 3 in the Suburbs as in the previous year.

The Fire Brigade received during the year 3,182 calls (including City, Suburbs and Extended Suburbs) as against 3,251 calls during the preceding year. Out of these 1,755 calls were for actual fires as against 1,752 calls during the preceding year. 484 calls were false alarms of which as many as 254 were due to malicious interference with street fire alarms as against 188 in the preceding year. 654 calls as against 716 in the preceding year were for special services, such as, house collapses, rescue works, etc. Four persons were handed over to the Police for giving malicious calls.

The City was served by 213 fire alarm posts (including 98 private ones).

There were 14 serious fires during the year. The estimated total loss to property damaged by fire was about Rs. 95,76,772 lakhs as against Rs. 1,11,20 lakhs during the previous year. The value of the insurance of properties affected by fire was about Rs. 78,28,420, as against Rs. 1,10,00,000 during the previous year and the total value of the property involved was worth Rs. 53.35 crores as against Rs. 18 crores in the preceding year.

During the year 36 persons lost their lives due to burns of which 18 were men and 18 women. 108 persons received minor injuries and 4 persons lost their lives in 179 incidents of house collapses during the year.

The approximate quantity of water used in extinguishing fires was 41,27,013 gallons out of which 19,22,755 gallons were drawn from Municipal mains, and the rest from the sea, wells, ponds, etc.

The total number of calls within the limits of Greater Bombay received during the year was 8,205 of which 1,416 were for accidents, 1,716 for maternity cases and 5,051 for hire cases.

First-Aid was rendered by the Ambulance staff on 246 occasions as against 376 occasions in the previous year.

The annual maintenance cost of the Fire Brigade Department including the ambulance service but excluding the supervision charges and Provident Fund, Pension, and proportion of general supervision and revenue and debt charges, etc., was Rs. 30,83,238.19 as against Rs. 24,03,774.46 in the preceding year.

In accordance with Government orders, Fire Brigade Department continued to be under the control of the Director of Civil Defence and Fire Adviser to the Government of Maharashtra.

The personnel of Fire Brigade rendered emergency service to the victims of two train accidents of serious nature on 13th and 28th June 1966 at Matunga and Wadala Railway Stations. respectively.

PUBLIC GARDENS.

28. During the year under report, the Department maintained 218 sites for public recreation, including 54 Gardens, 3 Fountains, 8 Band Stands, 8 Traffic Islands, 6 Open Spaces, 77 Recreation grounds, 3 Statues and 5 Box Hedges in the City, 39 Gardens, 2 Playgrounds, 1 Band Stand and 1 Traffic Island in Suburbs and 10 Gardens in the Extended Suburbs. During the year, development of 9 new sites into gardens and recreation grounds was undertaken, and development of 3 new sites into gardens was under progress at the end of the year under report.

During the year, 186 wild animals, birds and reptiles were treated in the Zoo Hospital and 144 specimens of pathobacteriological interest were examined. The total livestock in the Zoo was 962.

The total expenditure in all gardens and recreation sites in Greater Bombay was Rs. 13,43,429 as against an income of Rs. 2,82,277 including nominal entrance fee of 5 paise per adult introduced from 18th April 1966.

The Standing Committee feels that much improvement is needed to improve the Gardens and recreation sites in Greater Bombay and development of sites reserved in the Development Plan should be undertaken as early as possible.

s **Victoria and Albert Museum.**

29. The Museum was kept open to the public for 304 days as against 305 days in the preceding year. The total number of visitors during the year was 6.55 lacs as against 7.08 lacs in the preceding year.

The amount realised by the levy of admission fee was Rs. 16,205 as against Rs. 17,180 in the preceding year. The total expenditure on the maintenance of the Museum during the year was over Rs. 40 lakhs as against nearly 45 lakhs during the preceding year.

Municipal Free Reading Rooms and Libraries.

30. As per Corporation Resolution No. 114, dated the 24th May 1965, 14 Municipal Free Reading Rooms and Libraries out of 22 in Greater Bombay were handed over to the Mumbai Marathi Grantha Sangrahalaya for management. The total number of new books purchased in Libraries in the City and Suburbs was 1,500 and 432 and the number of visitors to the Reading Rooms and Libraries in the respective areas was 2.40 lacs, and 0.35 as against 3.45 lacs in the City and 0.80 lacs in the Suburbs during the preceding year. The income from the Libraries and Reading Rooms in the City and Suburbs stood at Rs. 481, Rs. 209, respectively.

Central Stores.

31. Tenders were invited for the purchase of stores during the year in 216 cases as against 222 in the previous year and the number of contracts entered into for the various scheduled articles was 262 as against 291 in the preceding year. The value of stores and other materials purchased including articles received from other Departments on Return Stores Mema, during the year amounted to Rs. 184.75 lacs as against Rs. 141.08 lacs in the previous year.

During the year about 10,711 Metric tons of cement worth about Rs. 20.96 lacs were purchased. Likewise 3,647 M. Tons of Iron materials worth about Rs. 33.02 lacs, 24,838 Meters of Galvd. Iron pipes worth about Rs. 1.32 lacs and 3,94,408 Meters of cloth worth about Rs. 5.14 lacs were purchased. Similarly the Department also purchased 3,742 quintal of wheat and rice for various Municipal Hospitals and Maternity Homes worth about Rs. 2.43 lacs. There were about 25 tenders for dietary articles amounting to Rs. 28.87 lacs approximately.

4,724 orders for the purchase of stores against 5,210 in the preceding year were placed with contractors and other dealers. Against these purchases and stock on hand, the consuming departments submitted 26,815 indents and Sales Mema. as against 25,630 in the preceding year. The total turnover of the department, viz., Receipts and Issues of stores during the year was Rs. 327.43 lacs as against Rs. 250.67 lacs in the preceding year. At the close of the year, the department had on hand stores of the value of Rs. 138.52 lacs against Rs. 96.46 lacs in the preceding year.

The total amount realised by the sale of unserviceable articles through private offers including mixed scrap amounted to Rs. 2.08 lacs as against Rs. 2.70 lacs in the preceding years.

LICENCE DEPARTMENT.

32. During the year the amount collected by way of licence fees, permit fees and transfer fees was Rs. 45.52 lacs.

From the permits issued for exhibiting sky signs, advertisements, etc., the total revenue realised was Rs. 7.51 lacs in the city, Rs. 1.83 lacs in Suburbs and Rs. 0.44 lac in Extended Suburbs the corresponding figures for the last year being Rs. 5.75 lacs in the City, Rs. 1.85 lacs in the Suburbs and Rs. 0.45 lac in the Extended Suburbs.

The Department instituted 2,534 cases in the City, 517 cases in the Suburbs and 1,334 cases in the Extended Suburbs for offences under Sections 328, 328A, 394 and 412A of the Bombay Municipal Corporation Act. The total amount of fines inflicted was Rs. 1,52,911 in the City, Rs. 1,03,593 in the Suburbs and Rs. 46,632 in the Extended Suburbs.

The number of squatters' and hawkers' licences issued were 69,860 in the City, 11,842 in the Suburbs and 331 in the Extended Suburbs. The amount realised therefrom was Rs. 13,29,480 for the City, Rs. 3,38,922 for the Suburbs and Rs. 50,942 for the Extended Suburbs, respectively.

The Corporation had appointed a Committee regarding the question of suitably modifying the present policy of issue of hawkers' licences so as to provide more licences to the hawkers in the City (*Vide* C. R. No. 1816, dated 19th March 1964). Accordingly, new Reserve Areas are created and licences are being issued by the Ward Officers in consultation with the Ward Councillors.

The staff of the Encroachment Removal Section working under the supervision of Sr. Inspector (Lorries) was distributed under the respective Ward officers.

33. The total number of establishments under the various categories including Theatres, etc., on 31st March 1967 was 89,021 in the City, 19,311 in the Suburbs and 8,205 in the Extended Suburbs as against 84,334 in the City, 17,819 in the Suburbs and 7,500 in the Extended Suburbs in the last year.

During the year under report, 1,984, 313 and 89 complaints, respectively, pertaining to City, Suburbs and Extended Suburbs were received in addition to complaints pending from the preceding year out of which 2,005, 306 and 89 were investigated leaving 39, 14 and 6 complaints pending at the close of the year.

At the beginning of the year 2,717, 1,851 and 383 prosecutions were pending while 2,534, 1,334 and 517 new prosecutions were instituted during the year. Of these prosecutions 1,131, 681 and 271 resulted in convictions, 79, 21 and 66 in acquittals and 1,791, 920 and 86 cases were withdrawn. The number of cases pending at the end of the year was 2,249, 1,563 and 477. The total amount of fines realised was Rs. 1,52,911, 1,03,593 and 46,632 as against Rs. 2,68,173, Rs. 48,085 and Rs. 11,840 in the previous year.

The total expenditure incurred in the administration of this Act, the Payment of Wages Act, the Minimum Wages Act, and the Workmen's Compensation Act, during the year was Rs. 4,67,636, Rs. 1,13,381 and Rs. 50,995 for the City, Suburbs and Extended Suburbs (exclusive of Provident Fund, Leave Contributions and Supervision Charges) against which a grant-in-aid of Rs. 3,33,913 was received from Government for the year 1966-67 for meeting part of the expenditure incurred during the year 1965-66.

The total income by way of Registration fees, etc., for the year amounted to Rs. 2,34,289, Rs. 48,220 and Rs. 22,506 for the City, Suburbs and Extended Suburbs.

132 complaints pertaining to the Payment of Wages Act, in the City, 54 for the Suburbs and 24 for Extended Suburbs were received. Only 1 complaint was pending disposal at the close of the year under report.

Markets and Slaughter Houses.

34. The total income of the Department for the City, Suburbs and Extended Suburbs during the year was Rs. 74.50 lacs as against Rs. 69.41 lacs in the previous year, showing an increase of Rs. 5.09 lacs.

During the year there were 49 Municipal and 24 private markets and 7 slaughter houses. The number of outside meat shops was 199 in the City and 35 in Extended Suburbs. The licence fees realised from private markets and outside meat shops were Rs. 93,423 and Rs. 93,423, respectively, in the City. The work of collecting Scale fees at the Mahatma Jyotiba Phule Market continued to be carried out departmentally and the revenue collected therefrom amounted to Rs. 9,76,751 as against Rs. 8,90,848 during the previous year.

The work of shifting the Slaughter House from Bandra to Deonar was in progress.

Surprise raids to detect and prevent the smuggling of animals and contraband meat and unauthorised slaughter as also insanitation and congestion in markets were carried out during the year.

The total number of animals slaughtered during the year in the City was 14,65,921 as against 13,39,869 during the previous year.

Standing Committee feels that construction of additional markets be undertaken expeditiously to cater to the needs of ever-increasing population so that apart from augmenting the revenue of the Corporation, the nuisance of squatters can be also minimised by allotting stalls to them in the markets. The Standing Committee is also of the opinion that the Report should indicate progress of new Projects in order to assess the performance. The Committee also feels that the markets should be made more attractive and on the lines of Departmental Stores.

Municipal Printing Press.

35. During the year under report 351 metric tons of paper was purchased. The total number of printing jobs carried out was 15,494 and the number of pages printed was 42,803 as against 12,157 and 49,189 in the preceding year. The total quantity of paper consumed during the year under report was 349 metric tons and as against 359½ metric tons in the previous year.

The transactions of the Press for the year closed with a working surplus of Rs. 24,301 on the total turnover of Rs. 20.05 lacs against the surplus of Rs. 1,09,079 and the turnover of Rs. 16.72 lacs for the preceding year. The labour staff as on 28th February 1967 consisted of 279 workers as against 291 on the 28th February 1966.

The Standing Committee is of the opinion that proper amenities of ventilation, temperature control, better working conditions, a well furnished canteen, etc., should be provided to workmen. Planned programme of jobs should be formulated and enforced to achieve maximum utilization of men and machinepower. The Standing Committee also feels that the additional floor or extension should be carried out to the existing building as the space is found inadequate.

K. E. M. Hospital.

36. The scheduled bed strengths during the year was 1,113. Throughout the year there was constant overcrowding in the Hospital particularly in the Children Wards and the Medical and Surgical Wards for females. The total number of in-patients admitted during the year was 1,436 as against 5,221 in the previous year. The average number of days each patient was resident was 9.82 days as against 9.39 days in the last year. The average cost per in-patient per day was Rs. 14.39 as against Rs. 13.03 in the previous year.

The total number of new out-patients treated was 3,19,476 as against 3,14,699 in the preceding year. The out-patients attendance including casualty patients during the year came to 7,57,622.

Cardio Vascular and Thoracic Centre was opened during the last year under report having out patient Department and two wards with an accommodation of 80 beds, two air conditioned operation theatres and Physio and occupational Therapy Department for the benefit of the Public.

19,176 operations were performed on in-patients and 35,131 operations were performed on out-patients.

The Dr. Jivraj N. Mehta Pharmaceutical Laboratory attached to the Hospital manufactured many injectables viz., 96,669 transfusion bottles 500 ml. (14 different types), 10,303 A.C.D. bottles 80 ml, Bulk injections and sterile solutions (Eight types) 28 Litres, 73 litres stains and solutions for clinical use. The market value of the above product was 3,27,210.03. The Blood Bank works satisfactorily and during the year 9,358 Blood samples were supplied for transfusion and 9,647 samples of blood were collected including the voluntary doners at a cost of Rs. 60,244. The amount was paid from the Poor Box Charity Fund.

A Family Planning Centre, which is aided by the Government of India, continued to work satisfactorily during the year. 182 vasectomy operations were performed at the centre.

3,222 Food Handlers working in hotels and restaurants in the City were referred to the hospital for examination of which 1,477 persons attended. 328 persons did not give their stools, etc., for pathological examination and hence their reports were still pending.

The work of construction of 19 rooms in Nurses Home Compound for the nursing staff was completed.

The works of construction of an additional wing to the Gynecological Ward and of an additional Ward over the X-Ray Department were under progress.

The total expenditure incurred during the year for the maintenance of the Hospital was Rs. 75.79 lacs as against Rs. 75.16 lacs in the previous year.

Seth G. S. Medical College.

37. During the year under report 160 admissions were made. One student was admitted in the Second M.B., B.S., on transfer basis. There were 61 overseas students on the roll.

The number of male students residing in the Male Students' Hostel during the year was 148, while the number of lady students accommodated in the Lady Students' Hostel was 86. In order to meet the increasing demand for under graduate students as also interneers, research students, etc. The Dormitory at Naigaum has been converted into Hostel to accommodate 95 students. During the year 229 students took advantage of these hostels.

The different departments of the College and the Hospital, in addition to their normal teaching and departmental works, conducted various researches under the auspices of the Indian Council of Medical Research, Council of Scientific and Industrial Research, K. E. M. Hospital and Seth G. S. Medical College Staff Research Society and other institutions, etc.

The progress of other activities like Library, Museum, Gymkhana, etc., was satisfactory.

E. N. T. Hospital.

38. The Hospital has a provision for 100 beds and all the 100 beds were commissioned for the use of in-patients during the year under report. The total number of patients admitted in the hospital during the year was 4,976. Excepting out of which 4,446 were cured, 257 were relieved, 169 were otherwise discharged, 31 left against medical advice and 11 died leaving 62 patients under treatment in the hospital at the close of the year. The highest number of patients admitted on a single day was 32 in the 26th September 1966.

The daily average attendance of Out-patients was 200. The highest number of Out-patients on a single day was 301 on the 2nd August 1966.

In all 6,336 operations were performed of which 1,682 were on out-patients and the remaining 4,654 on the in-patients during the year.

An amount of Rs. 4,42,548 was collected in the Poor Box Charity Fund. Seth Mangoomal Amarsingh, Managing Trustees of Atmasing Jenasing Charitable Trust, who has donated Rs. 2½ lakhs to the hospital was requested to donate the articles mentioned in the deed of agreement already executed in the last year.

39. The Hospital has an accommodation of 336 beds, fully occupied throughout the year. During the year, on an average 488.84 in-patients were admitted in the Hospital as against the scheduled bed strength. The total number of in-patients admitted during the year was 24,160 as against 24,892 during the previous year. The total number of in-patients treated was 24,647. The average cost per day per in-patient was 15.93 as against Rs. 13.73 during the previous year.

The total number of out-patients treated was 3,39,189 as against 3,24,489 during the previous year and the average number of outpatients' attendance per day was 1,194.79 as against 1,056.95 of the previous year.

Dr. Bhajekar Municipal Hospital at Khetwadi continued to be under the supervision of the Dean, B. Y. L. Nair Charitable Hospital.

The total expenditure incurred on the maintenance of the Hospital including liabilities amounted to Rs. 36.33 lacs against Rs. 32.51 lacs during the last year.

Construction of a new building with ground and eight upper storeys is under progress for the Hospital with a bed capacity of about 500. 10 Air Conditioned fully equipped Operation Theatres and accommodation for out-patient services is expected to be completed before the end of the year 1967, which would ease the present rush only to some extent. In the second phase of the expansion programme adequate facilities are proposed mainly for specialized services. The Standing Committee is of the view that the Ambulance and Hearses facility at the Hospital are inadequate and should be augmented.

Topiwala National Medical College.

40. The College had 644 under-graduate students on the roll at the close of the year, out of whom 333 were lady students. Besides, there were 160 post-graduate students including 48 lady students.

The total expenditure incurred on the maintenance of the College amounted to Rs. 12.94 lacs as against Rs. 13.46 lacs during the previous year. The total income by way of tuition fees, miscellaneous, etc., receipts amounted to Rs. 2.74 lacs as against Rs. 2.69 lacs during the last year.

1409 books were added to the Library during the year of which 631 were received by way of presents. The Library had at the end of the year 13,233 books as against 11,826 in the previous year.

Nair Hospital Dental College.

41. During the year under report, 43 students including 13 ladies passed the Final B.D.S. and M.D.S. Examinations of the Bombay University from the College. The College has 127 Dental Chairs, 100 Dental Units and 3 Dental X-Ray Machines and other equipments to give dental treatment on most modern lines and also to facilitate teaching of dentistry. During the year, 85,375 patients were treated as against 89,730 during the previous year. 7,120 municipal school children were treated in the clinics. The total expenditure incurred was Rs. 6.05 lacs as against Rs. 6.30 lacs in the preceding year and the total revenue was Rs. 1.84 lacs, against Rs. 1.89 lacs during the preceding year.

Lokmanya Tilak Municipal General Hospital, Sion, and Bai Annapurnabai Deshmukh Hospital for Women and The Lokmanya Tilak Municipal Medical College, Sion.

42. The bed accommodation of the Hospital was 475 (415 non-paying, 50 part-paying and 10 reserved for B.E.S. & T. employees). 36,866 patients were admitted during the year as against 35,958 during the preceding year. The daily average number of in-patients was 752.7 as against 676.8 in the preceding year. The average number of days each patient was resident was 7.4 as against 6.6 during the preceding year.

The average cost per in-patient on diet per day was Rs. 1.48 as against Rs. 1.54 in the preceding year. The total average cost per day per in-patient was Rs. 18.82 as against Rs. 17.98 in the preceding year.

The total number of new out-patients was 1,87,786 with a daily average of 607.72 as against 1,84,306 and 600.3 respectively in the preceding year. The total number of out-patients attendance was 6.85 lakhs. The highest number of out-patients attendance on a single day was 3,330 as against 3,205 in the preceding year.

The Paying Bed Scheme which started from 1st September 1951 worked satisfactorily. The number of patients admitted in the General and Special rooms during the year was 1,376 as against 1,372 during the preceding year.

The approximate total expenditure during the year under report was Rs. 48.66 lakhs as against Rs. 46.09 lakhs in the preceding year.

Municipal Medical College attached to this Hospital which was started in November 1964 entered into its third academic year. The name of the College has been changed to "The Lokmanya Tilak Municipal Medical College". The first batch of 60 students and second batch of 52 students entered the Second M.B.B.S. Class.

6 Additional departments, viz., Paediatric follow up Clinic and IV Gynaec Unit were started at the Hospital during the year.

Group of T. B. Hospitals, Sewri.

43. The total number of beds for T. B. patients at the Corporation's disposal was 1,288 viz., Group of T. B. Hospitals, Sewri 800; Isolation Centre attached to the Ramkunwar Daftary T. B. Clinic, Dadar, 88, and Sarvodaya Hospital, Ghatkopar, 400 (reserved for the Corporation). The total number of patients treated was 6,709 as against 5,934 during the previous year. Of these 5,477 were discharged as improved, 187 were non-Tuberculosis cases, 577 left prematurely against advice, 468 died and 719 remained under treatment at the close of the year. Mortality figures revealed high incidence in the age group of 26-30 years. The rate of death per cent. to the total number of patients treated was 6.9. Major lung operations were performed in 387 cases.

As many as 2,275 patients attended the follow-up examination for check up after discharge from the hospitals during the year.

The total expenditure incurred during the year on the Group of T. B. Hospitals, Sewri was Rs. 33.36 lacs against Rs. 26.17 lacs in the previous year. The average expenditure per patient per day was Rs. 12.33 as against Rs. 9.79 in the previous year.

The expenditure incurred during the year by the Corporation for treatment, etc., at the Sarvodaya Hospital, Ghatkopar, was Rs. 9,26,227 lacs as against Rs. 6,27,147 lacs for the previous year. The expenditure incurred by the Corporation on the 4 T. B. Clinics attached to G. T. B. Hospitals was 6,48,430 lacs. The total expenditure thus incurred by Corporation on Tuberculosis Services amounted to Rs. 49,11,046.

The Administration Report for the year 1966-67 reveals that the heaviest mortality during the year was in the age groups of 26-30 years. The Standing Committee reiterates that in the interest of the City's health, it is necessary that steps should be taken for detection of such cases in primary stage and for thorough treatment so that high incidence of mortality due to this disease may be reduced and infection at young age may be arrested.

Legal Department.

44. During the year under report, the Department continued to attend to contested matters and other legal proceedings in the High Court, City Civil Court, Small Causes Court and Police Courts as also to other legal matters. During the year, the Department received 25,237 files, addressed 3398 letters to outside parties or their legal advisers and the opinions on different departmental matters and the advices on 247 cases were given.

The income by way of costs recovered amounted to about Rs. 31,742 and expenditure to about Rs. 6,22,941.

Municipal Courts for conducting enquiries under Section 105(B) of the Bombay Municipal Corporation Act were placed in charge of the Legal Department during the year under report. 8534 cases were registered in 1966 and 2,036 cases were disposed of.

The Standing Committee considers it essential to speedily deal with pending inquiry cases and also to adopt measures to expedite disposal of Court Cases including vacating of numerous injunctions against the Corporation.

Education

45. At close of the year, there were 4,74,468 pupils in 872 Schools and 118 classes in Greater Bombay, the number in the City being 2,71,939 pupils in 497 Schools and 48 classes; in the Suburbs 1,55,077 pupils in 279 schools and 49 classes and in Extended Suburbs 47,452 pupils in 96 Schools and 21 classes. During the year, there was a net increase of 24,354 pupils in Municipal Schools. The total number of teachers in Greater Bombay at the end of the year was 13,491 including special teachers.

With a view to avoiding over-crowding in classes and to facilitate proper attention to pupils, it was laid down that ordinarily a class should not have more than 50 pupils. In schools housed in hired residential buildings, over-crowding on account of inadequate space was an impediment in the way of efficient instruction. Out of 990 schools and classes, about 693 schools and classes were required to be run in two sessions and more than two sessions for want of sufficient accommodation.

The number of Municipal owned buildings at the beginning of the year in the Greater Bombay was 170. 16 schools were built during the year under report. The total number of municipal owned school buildings in the Greater Bombay at the end of the year was 186.

470 schools (including classes) were housed in Municipal owned school buildings, 500 schools including classes were housed in rented buildings and 20 schools were housed in rent free buildings. Due to yearly increase in the number of pupils, it has become practically impossible to accommodate them in the existing accommodation. A steady and planned progress towards acquisition of private plots and structures, etc., wherever possible and construction of school buildings is therefore being made. The Standing Committee is, however, of the opinion that under the Development Plan, sites have been reserved for schools and as such speedy efforts should be made to construct buildings on vacant plots which are in possession.

The Rahimtoola Currimbhoy Urdu Training Institute for Women continued to function. There were 4 divisions of Second Year Class comprising 3 divisions of S. S. C. passed candidates and one division of P. S. C. Passed candidates with 193 trainees at the end of the year.

The Municipal Urdu Teacher's Training Class, started in July 1958, continued to function during the year under report. Out of the 50 trainees in the Class (one year's course) only 46 appeared for the P. T. C. Examination and 36 were declared successful, the result being 78 per cent.

The Corporation continued to impart vocational education through 33 Vocational Classes in 22 Vocational Schools.

The Educational Guidance Centre opened during the last year to help students to receive educational, vocational and developmental guidance continued to function. The Centre undertook the extra-curricular activities such as Guidance Conference, Career Information Centre at each ward.

The total number of Aided Schools in Greater Bombay during the year was 223 out of which 133 were in the City, 53 in the Suburbs and 37 in the Extended Suburbs as against 254 in the previous year. The total number of teachers in Aided Schools was 1,885 (1,653 ordinary and 232 special) imparting education to 55,787 pupils. The number of pupils in Aided Schools in the City, Suburbs and Extended Suburbs decreased during the year under review from 65,411 to 55,787. The total number of Recognised Schools not receiving Grant-in-Aid was 331 (200 in the City, 96 in the Suburbs and 35 in Extended Suburbs) with 2,897 ordinary and 567 special teachers imparting education to 1,03,629 (58,697 in the City, 34,703 in the Suburbs and 10,229 in Extended Suburbs) pupils.

The revised Grant-in Aid came into force from 1st April 1964. The amounts of grants payable to private Primary Schools for the year under report were Rs. 7,07,439.

The average cost per pupil in the Municipal Schools calculated on the basis of the average number of pupils on rolls as on 31st March 1967 for City, Suburbs and Extended Suburbs was Rs. 127.03.

The total expenditure for the year amounted to Rs. 6,02,76,412 which was met from Municipal contribution (Rs. 4,60,56,780),—Government Grant (Rs. 62,99,960), Education Cess (Rs. 1,03,36,802) and miscellaneous receipts (Rs. 9,38,053.)

Secondary Schools.

The Corporation started five more secondary schools in addition to 17 Secondary Schools in 16 different wards in the City, with 95 divisions of Std. VIII which were conducted in the City during the last year under report. During the year there were 158 Divisions of Std. VIII and 74 Divisions of Std. IX. The total number of pupils attending these schools was 10,161.

The Standing Committee has requested the Municipal Commissioner to consider the desirability of converting Municipal Secondary Schools into Technical ones. Efforts should continue to raise the standard of education in Municipal Schools.

In all 1,10,084 pupils were medically examined out of whom 92,023 were found to be suffering from one defect or the other. Amongst the common defects noticed, general debility, dental lymphatic glands, throat were most predominant.

The Standing Committee reiterate that the question of constructing new School Buildings should be given top priority so as to ensure qualitative upgrading of primary education in Municipal Schools.

Research Unit.

46. The Research Unit carried out special experiments in selected schools on several educational problems such as, how to make classes interesting, to increase attendance, to minimise the failure, etc. Reading habits of children were studied and a language Development Project in Standards I to IV in model schools was undertaken.

Labour Department.

47. During the year, 18 Recognised Trade Unions represented Municipal employees, with a view to promote cordial relations between the staff and the Administration, the total number of Joint Councils representing labour staff which continued to function was 22, their scope being wide enough to permit discussions on various matters relating to grievances and conditions of service of the staff. Peshi Committees for enquiring into the mis-conduct of employees were also formed. A four-stage grievance procedure has also been introduced in all Departments for redressal of the employees' grievances. The recognition of the Bombay Municipal Kamgar Sangh was withdrawn for want of Union's representative character in those departments.

The Department dealt with 13,468 complaints (including Suburbs) as against 17,639 in the previous year, regarding service conditions, recruitments, promotions, transfers, etc. Of these complaints 12,982 were redressed, 394 were found not genuine cases and 92 cases were pending at the close of the year.

The Corporation also gave approval to start a Welfare Centre for Sion Hospital Nursing Staff.

The recreation, educational hygienic, cultural and social activities, indoor as well as outdoor, organised by the Welfare Branch of the Department, for the benefit of Municipal workers and their dependents, were continued. The average daily attendance of adults and

children at the different Welfare Centre was 1,750 and 1,680, respectively, as against 2,139 and 1,814 during the preceding year.

Under the scheme for granting scholarships to the children of Municipal employees, 447 applications were received out of which 209 eligible applicants for secondary education and 158 for higher education were awarded scholarships at a total cost of about Rs. 20,000. 448 applications were received for medical assistance and help aggregating to Rs. 20,000 was given in 433 deserving cases. The total strength in Scout and Guide Sections was 3,754 as against 3,233 during the preceding year.

64 disputes were referred to the Assistant Commissioner of Labour, Conciliation Officer, 1st Labour Court, etc.

Two Nursery Classes started two years ago were functioning satisfactorily during the year and they were also found to be popular among the labour staff of Bapty Road Chawls.

In addition to Lovegrove, Dadar and Dharavi Co-operative Societies, two more Societies, one each at Versova and Colaba plants for grow more food project have been formed under the guidance of Labour Officer. Profits were distributed to share holders by the Commissioner at Dadar Purification Works.

Publicity Department.

48. This Department effected general publicity about the various activities and services rendered by different Departments. The Department also worked as a "clearing house" in respect of criticisms and suggestions appearing in local newspapers. It also carried out health education work and dissemination of information to the public through various media.

Besides participation in various important celebrations, such as, World Health Day, National Cleanliness Day, World Leprosy Day, etc., and undertaking printing of a Civic Guide-cum-Diary, 1966, a new series of informative publications were issued which comprised of pamphlets, with a view to convey correct information to citizens about Civic affairs.

M. G. M. O. Swimming Pool.

49. During the year under report the working and progress of the Mahatma Gandhi Memorial Olympic Swimming Pool at Shivaji Park was satisfactory.

The Pool was kept closed for 16 days from 15-7-1966 to 30-7-1966 due to water shortage and was re-opened on 31-7-1966 for Swimming

Facilities to polio-crippled children were given to 25 children free of charge.

The Pool premises were given for use, free of charge, to the Maharashtra State Aquatic Association and the University of Bombay, for holding their competitions. The total reservation hours of the Pool by private parties were 411 which brought a revenue of Rs. 9,175. As many as 35,468 casual swimmers including labourers and factory workers availed themselves of the facilities of swimming. Reservation of the Pool at a concessional rate of Rs. 100 per month for two hours a week was also allowed as usual to 6 Educational Institutions. Sixteen members of the Pool were included in the Maharashtra State Aquatic Association's team for participatig in the 23rd National Swimming Championship held at Patiala in October 1966. Seventeen Members of the Pool participated in 1966 in the Swimming Competitions held at Delhi by the National Swimming Club of India, Delhi.

7,714 new Members joined the Pool during the year under report. 4,096 beginners were trained during the year. An amount of Rs. 2,48,476 was collected by way of fees as against Rs. 1,76,000 during the previous year.

Administrative Officer (Enquiries) Department.

50. The Department functions in three Sections, viz., (1) Enquiries, (2) Stock Verification and (3) Security Force.

During the year, the Enquiries Section dealt with 1,064 cases which included cases of alleged acceptance of illegal gratification, misconduct, misbehaviour, theft of Municipal property, breaches of provisions of Municipal Bye-laws, infringement of licence conditions, use of municipal vehicles by unauthorised persons, sub-letting of rooms, etc. In 219 cases punishments varying from dismissal, removal from service to censures and warnings were meted out. 189 cases were filed as the allegations were found to be either false, or too vague. In 265 cases, Departments concerned were asked to take necessary remedial actions. In 391 cases enquiries were in progress at the end of the year.

The distribution of relief from the Mayor's Fund to the families affected by fires, house-collapses and other natural calamities was also carried out by the Department.

Important cases of pilferages were brought to light by Bombay Municipal Security Force from different installations.

Industrial Home Guards Unit of 250 Home Guards (of all Municipal employees) which was established during the preceding year was functioning well. The unit would be of vital importance for maintaining essential services of the Corporation during emergencies.

The Bombay Civic Journal.

51. As usual twelve monthly issues were published. A special number was taken out as an Independence Number in August 1966. Efforts to bring in revenue by advertisements and increase in circulation were made during the period under report.

The Standing Committee feel that efforts should continue to make the magazine more popular and informative which will result in enhancing its usefulness besides increasing its circulation and revenue.

Organisation and Methods Division.

52. The Organization and Methods Division works as an Advisory Unit of the Municipal Commissioner's Office. The work done by the this Department includes *inter-alia* codification of Municipal Commissioner's orders and circulars of standing nature, standardisation of forms, etc. During the year under review, an Appreciation Training Programme on Management and Productivity for Top Executives was started in order to expose Corporation's Top management to modern management and Productivity Techniques for the solution of day to day problems of the Corporation.

The Standing Committee desires that the Division should be called upon to undertake reorganization of the functioning and staff pattern in various Departments and in Ward Offices.

Public Health.

53. *Population Census.*—The mid-year estimated population of Greater Bombay was 47,84,000.

Births and birth rate.—The total number of live births recorded in Greater Bombay during the year was 1,47,986 which were 5,205 more than in 1965 and 9,017 above the average of the quinquennium 1961 to 1965. The birth rate was 30.9.

Deaths and death rate.—The total number of deaths registered from all causes during the year was 50,492 as against 54,223 in 1965 being 5,952 more than the mean mortality of the preceding 5 years and the death rate was 10.6 against 11.7 in the year 1965. Of 50,492 deaths 29,105 deaths were among males and 21,387 among females. The excess of deaths amongst males may be ascribed to the slight preponderance of males. The death rate among females was, however, actually higher than among males, the male death rate being 11.7 and the female death rate 12.9 against 12.3 and 14.2, respectively, in 1965. Diseases of the respiratory system claimed the highest number of deaths in the past with death rate of 1.65 per 1,000. The causes coming next on the list for the year were congenital malformation and diseases of early infancy (1.11) tuberculosis 0.98, diarrhoea, enteritis fever and dysentery 0.80.

Deaths among infants under one year of age numbered 12,660 which were 1,079 less than in the preceding year and 1,235 more than the annual average of the previous quinquennium (1961-65). The infant mortality rate for the year was 85.5 per 1,000 live births as against 96.2 in 1965.

Maternity and Child Welfare.—During the year under report, services were rendered through 15 Municipal Maternity Homes and 27 Maternity and Child Welfare Centres. The number of deliveries conducted in these Homes was 42,308 during the year. The average stay of mothers at the Maternity Homes was 5 days.

Advice and instruction in spacing births was given by trained doctors to married men and women at the Family Welfare Planning Centres. Health Visitors paid domiciliary visits for follow-up work and propoganda. I. V. C. D. (Loops) were inserted to 7,333-married women.

Communicable Diseases.—The total number of cases of infectious diseases reported during the year was 12,527 as against 10,231 in the preceding year. Infections Hepatitis caused 5880 attacks and 308 deaths. Small-pox caused 360 attacks and 141 deaths. Influenza

caused 5 deaths. Enteric Fever caused 519 attacks. Diphtheria caused 2,087 attacks and 124 deaths. Cerebro-spinal meningitis caused two attacks and one death. Tuberculosis took a toll of 4,726 lives and the death rate of Tuberculosis was 0.9 per 1,000 of mid-year estimated population. Whooping Cough caused 80 attacks and two deaths.

441 cases of Acute Anterior Poliomyelitis and 82 deaths thereby were reported during the year.

Municipal Group of Tuberculosis Hospital at Sewri has an accommodation for 800 in-patients; besides 400 beds are reserved at the Sarvodaya Hospital, Ghatkopar. The advance cases of T. B. were isolated at the Daftary Municipal Isolation Wards at Dadar.

During the year 10,61,781 persons were inoculated against Cholera and 9,96,202 persons were inoculated with T. A. B. Vaccine.

The Standing Committee view with concern the existence of different kinds of diseases especially of Filariasis and stress that the precautionary measures, such as inoculations, vaccinations, isolation, etc., if continued with full vigour in the Greater Bombay, will, in the near future, minimise the toll of life of citizens, if not eradicate it. So far as Tuberculosis is concerned there is not much improvement although B. C. G. vaccination campaign is pursued vigorously. The Standing Committee, therefore, feel that medical authorities should investigate this problem with a view to find other remedial measures to meet the growing menace of this dreaded disease to the citizens of this City.

Dispensaries.

54. The number of new cases treated at the 59 dispensaries and 11 mobile dispensaries was 17,07,527 as against 17,36,088 in the year 1965. In addition to the above dispensary work, women and children's clinics were conducted by three part-time lady doctors at six Municipal dispensaries for two hours, thrice a week. The number of new cases treated at these dispensaries was 2,264 (2,001 women and 263 children) as against 2,640 in 1965. The total attendance was 19,074. These figures include the visits of lady doctors to patients at their homes. At 27 Maternity and Child Welfare Clinics, 99,498 new cases (78,127 women and 21,371 children) were treated. The total attendance was 3,58,870.

The Standing Committee emphasizes the urgent need to upgrade all municipal dispensaries so as to provide, X-Ray Pathology and the facilities was to render both service to patients attending them and to reduce congestion at the General Hospitals.

The Municipal Eye Dispensary and Hospital at Kamathipura was attended by two Honorary Ophthalmic Surgeons by turns throughout the year. The Hospital has an accommodation for 20 beds each for males and females with an operation theatre and a full-time resident Nurse. The total attendance of patients was 92,826 as against 82,341 in 1965. The total number of new cases treated was 26,254 as against 26,352 in 1965. The number of indoor patients among the new cases treated and the total attendance of indoor patients were 1,079 and 11,296, respectively.

Leprosy.—The control of Leprosy in the City was exercised as before through the Acworth Leprosy Hospital, Wadala, with an accommodation of 500 beds. In addition to this the Institution conducts a well equipped out-patients' clinic, the entire cost of which is borne by the Corporation. The Corporation also bears the cost on account of 48 beds for the voluntary patients and 150-170 beds for the Bombay resident patients. Besides, the payment of cost of Domiciliary Services and Rs. 10,000 for rendering Sulphone treatment, the Corporation pays one third of the recurring expenditure of Greater Bombay Leprosy Control Scheme activities as also the entire cost of Capital Works.

The average daily attendance of patients was 193.00 and the total number of new cases treated at the Acworth Leprosy Clinic was 3,639 and the average daily attendance of patients was 260.67 and the total number of new cases treated at the Greater Bombay Leprosy Control Scheme was 1,568.

Venereal Diseases.

55. For combating Venereal Diseases free medical facilities both preventive and curative were continued as in the preceding year. During the year 21,28, (19,008 males and 2,278 females) cases were treated for Venereal and 2,306 (1,281 males and 1,025 females) in non-Venereal cases were also treated.

School Health Work.

56. During the year, out of about 5,14,455 municipal school children in the City, 92,023 children were found to be defective. 2,780 cases with minor ailments among the children were treated in the municipal dispensaries. 44,824 Children with major ailments were treated at the School Clinics at the K. E. M. Hospital, Nair Hospital and the L. T. M. G. Hospital, Sion.

29,107 children from Municipal Schools were B. C. G. vaccinated and 83,428 children were given T. A. B. inoculation and 23,165 children were given vaccination against small-pox. The Mobile Health Unit examined 33,926 children in 144 Municipal Schools.

Kasturba Hospital for Infectious Diseases, Arthur Road.

57. Except Tuberculosis and Leprosy, patients suffering from other infectious diseases are admitted to the Hospital. The total number of patients admitted during the year was 29,461 as against 26,317 in the preceding year. They included 360 cases of Small-pox, 414 of Enteric fever.

There were as many as 2,081 cases of Diphtheria out of which 114 proved fatal showing the fatality rate of 5.8 per cent. The cases were admitted predominantly from parel, Lalbaug, Byculla and Girgaum localities.

360 cases of Small-pox were admitted in the hospital out of which 141 died, giving a fatality rate of 39.2 per cent.

The total expenditure of the Hospital during the year was Rs. 33,25,538 as against Rs. 29,47,461 in the preceding year.

The Standing Committee regrets to note that the question of setting up an Infectious Diseases Hospital in Suburbs is kept pending since over 6 years.

Health Propaganda.

58. The Health Propaganda and Education was carried out through the Public Relations Department.

The Water Sampling Programme was continued as usual and samples were collected from all the wards.

Audit.

59. This year also the Municipal Chief Auditor's Report has not been included in the Municipal Commissioner's Administration Report, as required by Section 137(4) of the Bombay Municipal Corporation Act.

The Standing Committee are of the considered opinion that every effort must be made by the respective Heads of the Departments to comply with the statutory provisions. The Municipal Chief Auditor's Report would have been of much help to the Standing Committee in their scrutiny of the various facts and figures incorporated in the Report of the Municipal Commissioner. The Report, however, will be forwarded to the Corporation separately when received.

Acknowledgement.

60. In conclusion, the Standing Committee desire to record their appreciation of the very valuable services rendered by Shri J. H. Patwardhan who held the office of the Municipal Commissioner throughout the year and whose administrative abilities and financial acumen were of great help to the Committee.