



ADMINISTRATION REPORT

OF THE

MUNICIPAL COMMISSIONER

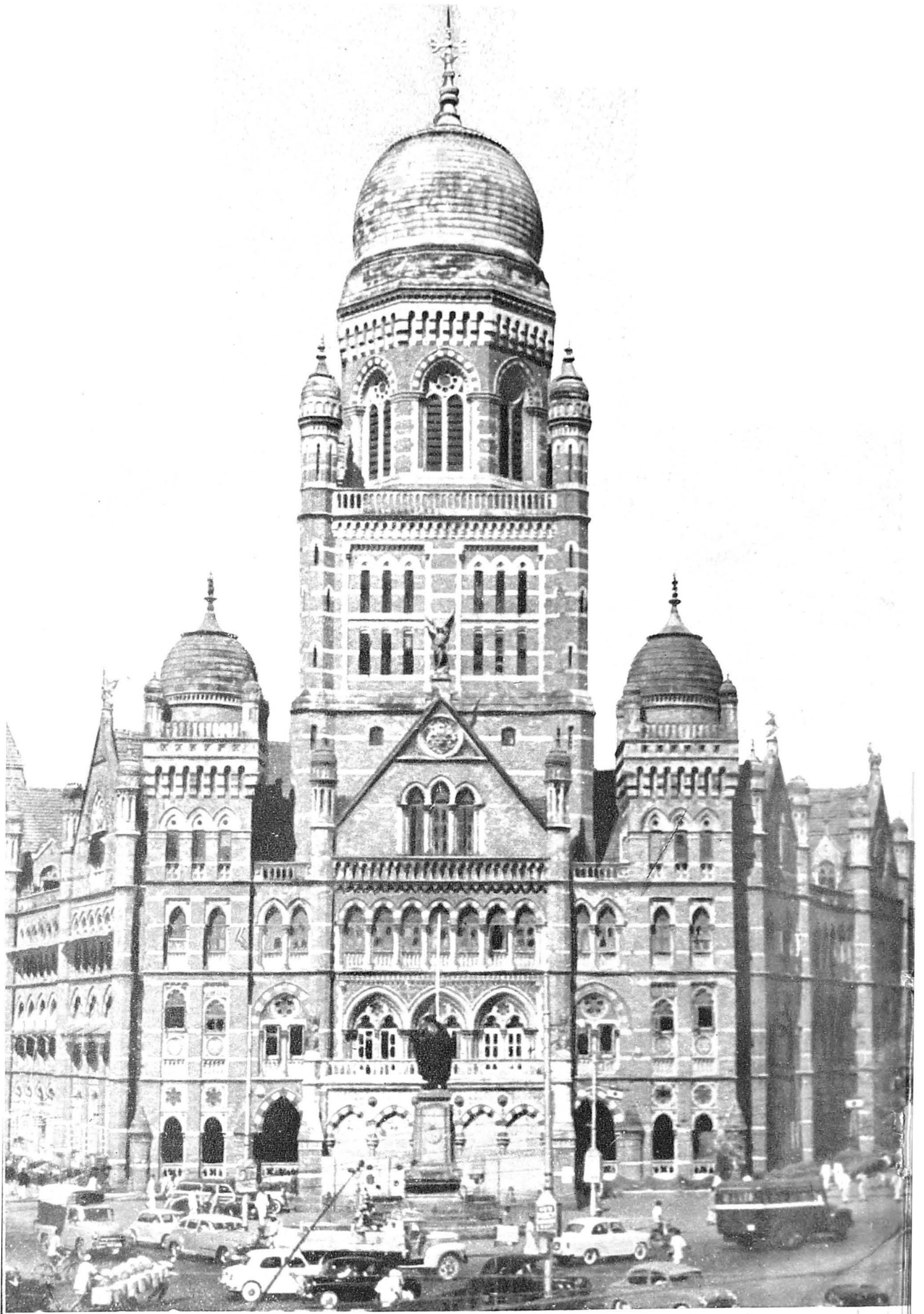
FOR

GREATER BOMBAY

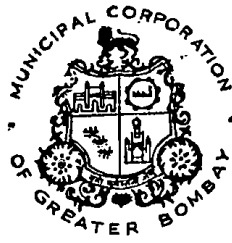
For the Year 1964-65

CITY, SUBURBS AND EXTENDED SUBURBS

BOMBAY
PRINTED AT THE MUNICIPAL PRINTING PRESS
1965



MUNICIPAL HEAD OFFICES



ADMINISTRATION REPORT

OF THE

MUNICIPAL COMMISSIONER

FOR

GREATER BOMBAY

For the Year 1964-65

CITY, SUBURBS AND EXTENDED SUBURBS

BOMBAY
PRINTED AT THE MUNICIPAL PRINTING PRESS
1965

C O N T E N T S

	PAGE
STANDING COMMITTEE'S REVIEW OF THE REPORT ...	i-xxi
COMMISSIONER'S REPORT ...	i
Accompaniments	
1. GENERAL	A 1
2. FINANCIAL :— Report of the Chief Accountant, with Appendices	A7
3. REVENUE :— Report of the Assessor and Collector	1
4. ELECTIONS :— Report of the Dy. Assessor and Collector (Octroi)	11
5. PUBLIC WORKS :— Report of the Executive Engineer—Vaitarna-cum-Tansa Scheme	13
6. REPORT OF THE CITY ENGINEER	21
7. ADMINISTRATIVE OFFICER (ESTATES)	53
8. WATER WORKS :— Report of the Hydraulic Engineer	67
9. FIRE BRIGADE :— Report of the Chief Officer	89
10. GARDENS :— Report of the Superintendent	99
11. VICTORIA AND ALBERT MUSEUMS :— Report of the Curator	101
12. MUNICIPAL LIBRARIES	103
13. CENTRAL STORES :— Report of the Controller of Stores	105
14. LICENCES, SHOPS AND ESTABLISHMENTS :— Report of the Superintendent	109
15. MARKETS AND SLAUGHTER HOUSES :— Report of the Superintendent	117
16. PRINTING PRESS :— Report of the Manager	123
17. K. E. M. HOSPITAL AND SETH G. S. M. COLLEGE :— Report of the Dean E. N. T. HOSPITAL :— Report of the Asstt. Medical Officer	127 141
18. BAI YAMUNABAI L. NAIR CHARITABLE HOSPITAL AND TOPIWALA NATIONAL MEDICAL COLLEGE	143
19. NAIR HOSPITAL DENTAL COLLEGE	153
20. L. T. MUNICIPAL GENERAL HOSPITAL, SION, AND ANNAPURNABAI DESHMUKH HOSPITAL FOR WOMEN	155
21. GROUP OF T. B. HOSPITALS, SEWRI	159
22. LEGAL DEPARTMENT	161
23. EDUCATION :— Report of the Education Officer	163
24. LABOUR :— Report of the Labour Officer	173
25. Publicity Officer	179
26. Mahatma Gandhi Memorial Olympic Swimming Pool	181
27. Report of the Administrative Officer (Enquiries)	183
28. Report of the Editor, the Bombay Civic Journal	187
29. Report of the Organizer and Methods Officer	189
30. PUBLIC HEALTH :— Report of the Executive Health Officer	191

**REVIEW OF THE STANDING COMMITTEE OF THE
ADMINISTRATION REPORT OF THE MUNICIPAL COMMISSIONER
FOR GREATER BOMBAY FOR THE YEAR 1964-65.**

The Administration Report submitted by the Municipal Commissioner, gives in detail the working of the various Municipal Departments for the year 1964-65.

Corporation.

2. Dr. B. P. Divgi was elected Mayor of Bombay for the year under report and he continued to hold that office throughout the year. Shri J. K. Joshi was the Chairman of the Standing Committee, Shri R. G. Mirashi was the Chairman of the Improvements Committee and Prof. (Smt.) Asha V. Toraskar was the Chairman of the Education Committee for the year under report and they continued to hold their respective offices throughout the year.

Commissioner.

3. Shri S. E. Sukthankar held the post of Municipal Commissioner throughout the year under report.

4. The financial transactions have resulted in a surplus of Rs. 99.44 lakhs at the end of the year instead of the anticipated surplus of Rs. 8.41 lakhs. This was due to the fact that the actual expenditure decreased by Rs. 2.39 Crores over the Revised Budget Estimate while the income decreased by Rs. 1.48 lakhs over the revised budgeted amount.

The Standing Committee is not at all happy to note the results of the year's working as revealed by the actuals and hope that adequate care will be taken in framing the estimates so as to make them realistic and as much close to actuals as possible.

Variation in Income.

5. In preparing the Budget Estimates for the year under report, an Opening Cash Balance of Rs. 3,31.87 lakhs was estimated. On the final closing of the accounts for the previous year, the actual Opening Balance for the year under report amounted to Rs. 1,30.72 lakhs. The total income budgeted for was Rs. 24,44.50 lakhs while the actual realizations amounted to Rs. 24,78.63 lakhs. On the expenditure side, the amount budgeted for was Rs. 25,50.17 lakhs whereas the actuals of expenditure was Rs. 23,79.19 lakhs.

Loan Funds.

6. The Opening Balance on 1st April 1964 on account of Loan Funds excluding the Trust Funds was Rs. 3,39.03 lakhs for the City, Rs. 74.69 Lakhs for the Suburbs and Rs. 35.88 lakhs for the Extended Suburbs. Loans aggregating to Rs. 3,45.70 lakhs for the City, Rs. 1.45 lakhs for the Suburbs and Rs. 25 lakhs for the Extended Suburbs were raised during the year. A credit of Rs. 37.54 lakhs was received on account of transfer of Stores under Capital Stock from Revenue Account to Loan Works City Account and an amount of Rs. 4 lakhs was received from Government for the Extended Suburbs Account.

The total Loan Funds available for expenditure during the year were Rs. 7,22.36 lakhs for the City, Rs. 2,19.09 lakhs for the Suburbs and Rs. 64.88 lakhs for the Extended Suburbs. The actual expenditure amounted to Rs. 4,43.76 lakhs for the City, Rs. 1,51.32 lakhs for the Suburbs and Rs. 47.11 lakhs for the Extended Suburbs on Capital Works as against the budgeted figure of Rs. 10,90.51 lakhs for the City, Rs. 3,59.13 lakhs for the Suburbs and Rs. 82.40 lakhs for the Extended Suburbs.

Sinking Funds.

7. The Book Value of investments of the Sinking Fund at the close of the year amounted to Rs. 17,66.32 lakhs for the City, Rs. 2,26.18 lakhs for the Suburbs and Rs. 41.17 lakhs for the Extended Suburbs, made up of the book value of securities and the amounts in cash with the State Bank of India. Valuing the Municipal and Improvement Trust Debentures at par, the market value of the Sinking Fund Investments held on 31st March 1965, came to Rs. 16.99.16 lakhs for the City, Rs. 2,22.03 lakhs for the Suburbs and Rs. 41.17 lakhs for the Extended Suburbs. The total amount of Sinking Fund thus came to Rs. 17,14.07 lakhs for the City, Rs. 2,25.14 lakhs for the Suburbs and Rs. 42.30 lakhs for the Extended Suburbs, the excess in the Sinking Fund Account being Rs. 13.95 lakhs for the City, the shortfall in the Sinking Fund Account being Rs. 2.74 lakhs for the City and Suburbs and the excess in the Sinking Fund Account being Rs. 1.07 lakhs for the Extended Suburbs, respectively.

Improvement Schemes Account, General Account, Income and Expenditure.

8. The total income for the City for the year amounted to Rs. 1,56.29 lakhs against Rs. 1,44.92 lakhs for the previous year, showing a net increase of Rs.11.37 lakhs. The main increases were in respect of (i) Rent and other proceeds of properties—Rs. 1.35 lakhs; (ii) Grant-in-aid from Government for meeting the deficit in the General Account—Rs. 10 lakhs; and (iii) Interest and profit on investment Rs. 20.00 and (iv) Miscellaneous Receipts—Rs. 1.33 lakh counterbalanced by decrease of Rs. 1.51 lakh under Contribution from the Municipal Corporation.

The total expenditure for the City for the year, viz., Rs. 1,60.19 lakhs as against Rs. 1,63.49 lakhs for the previous year, showed a decrease of Rs. 3.31 lakhs on that of the previous year. This is made up of decrease of Rs. 4.72 lakhs under maintenance of properties and streets counterbalanced by an increase of Rs. 1.41 lakhs under Debt Charges.

The net deficit thus amounted to Rs. 3.89 lakhs.

Loan Account.

The loan liability at the beginning of the year was Rs. 15,75.45 lakhs. The repayment of loan during the year was Rs. 61.09 lakhs of which Rs. 10.25 lakhs were repaid to Government and Rs. 50.84 lakhs to the debenture holders. The outstanding liability on loan account at the close of the year stood at Rs. 15,14.36 lakhs. Out of the amount outstanding on account of Government loans aggregating to Rs. 6,96.63 lakhs, debentures in respect of loans aggregating to Rs. 4,76.00 lakhs originally raised from Government have now been repurchased according to the approved programme for Sinking Fund Investments. The liability to Government on this Account is only Rs. 2,20.63 lakhs.

Capital Account.

The year began with an Opening Balance of Rs. 85.62 lakhs. In the course of the year, receipts on account of Sale Proceeds of Lands and Buildings amounted to Rs. 6.18 lakhs. The total funds thus available were Rs. 91.80 lakhs. The total expenditure incurred amounted to Rs. 65.23 lakhs. The deficit in the General Account for the year which amounted to Rs. 3.89 lakhs, was transferred to the Capital Account. The unspent balance at the close of the year was Rs. 22.67 lakhs.

The actual expenditure during the year on schemes amounted to Rs. 65.23 lakhs as against the Revised Estimates of Rs. 2,26.34 lakhs including Rs. 13.01 lakhs on account of the cost of Management and Establishment.

Sinking Fund in Improvement Schemes Account.

The amount of Sinking Fund on 31st March 1965 was Rs. 6,82.43 lakhs including cash with the State Bank of India. Valuing the Municipal and Trust debentures at par, the market value of Sinking Fund Investments at the end of the year under review amounted to Rs. 6,85.13 lakhs. This together with interest accrued upto 31st March 1965, viz. Rs. 1.70 lakhs and cash with the State Bank of India brought the total amount of Sinking Fund to Rs. 6,86.84 lakhs against Rs. 5,63.11 lakhs, the amount to which the Sinking Fund should have accumulated at the close of the year. The excess in the fund thus amounted to Rs. 1,23.73 lakhs.

The Gross Capital Liabilities of the Improvement Schemes in the City stood at Rs. 15,61.95 lakhs at the close of the year under review and the assets at Rs. 34,96.04 lakhs including the book value of funds comprised in Schedules 'W' and 'X', resulting in a Surplus of Rs. 19,34.10 lakhs.

General Account, Slum Clearance—City and Suburbs.

The total income during the year under Slum Clearance, City Section, amounted to Rs. 11.42 lakhs against Rs. 8.99 lakhs in the previous year showing the net increase of Rs. 2.43 lacs. This is made up of increase of Rs. 1.74 lacs under Rent and other proceeds of properties and Rs. 0.69 lac under Interest and Profits in investment.

The expenditure on this account during the year amounted to Rs. 14.92 lacs consisting of Rs. 4.98 lacs on Maintenance of Properties and Streets and Rs. 9.94 lacs on Debt Charges resulting in a deficit of Rs. 3.50 lacs at the close of the year which was made good from the Capital Account.

The total income during the year under Slum Clearance, Suburban Section, amounted to Rs. 18.72 lacs as against Rs. 17.88 lacs in the previous year showing a net increase of Rs. 0.84 lac. This is made up of increase of Rs. 0.25 lac under Rent and other proceeds of Properties, Rs. 0.49 lac under Contribution from Budget 'D' and Rs. 0.11 lakh under interest and profits on investment.

The expenditure during the year on this account amounted to Rs. 5.26 lakhs under Debt Charges and maintenance of properties leaving a net surplus of Rs. 13.46 lakhs.

Capital Account, Slum Clearance—City.

The Opening Balance under Capital Account, Slum Clearance, City, on 1st April 1964 was Rs. 13.13 lakhs. An amount of Rs. 4.52 lakhs was received from Government as loan and Rs. 4.23 lacs as grant-in-aid. A loan of Rs. 30 lakhs was raised from public. Thus the total funds available for expenditure amounted to Rs. 51.88 lakhs, against which the expenditure incurred during the year amounted to Rs. 10.52 lakhs. The deficit in the General Account amounting to Rs. 3.50 lacs was transferred to Capital Account. The unspent balance at the close of the year stood at Rs. 37.87 lakhs.

Capital Account, Slum Clearance—Suburbs.

The Opening Balance under Capital Account, Slum Clearance, Suburbs, on 1st April 1964 was Rs. 63.16 lakhs. Rs. 8.28 lakhs were received from Government as loan and Rs. 10.02 lacs as subsidy. The total funds available for expenditure thus amounted to Rs. 81.47 lakhs, against which expenditure incurred during the year amounted to Rs. 27.80 lakhs leaving an unspent balance of Rs. 67.13 lakhs including a revenue surplus of Rs. 13.46 lakhs transferred to Capital Account.

The Standing Committee is much concerned to find such huge surplus under Slum Clearance Account of the Suburban areas especially as the Suburban areas which came under the control of the Corporation only a few years back are much backward and are in a great need of planned development. The slum areas in suburbs require immediate attention in order that the evil of slum life is eradicated from these areas before it takes a gigantic form as in the City today. In this context, huge surplus balance under this account is not at all a healthy sign and indicates want of necessary foresight in City Planning and Development on the part of the executive. The Standing Committee, therefore, desires to alert the Executive in proper time and hope that the executive will be more vigilant and resourceful to spend all available funds under this account in years to come.

Education Fund.

9. The total income for the year amounted to Rs. 4,55.17 lakhs resulting in an increase of Rs. 1.73 lakhs on the Budget Estimates and an increase of Rs. 2.52 lakhs on the Revised Estimates. The rate of Education Cess was 2½ per cent. of rateable value on buildings and lands, the rateable value of each of which is not less than Rs. 300 per annum and 2 per cent. of the rateable value on buildings and lands, the rateable value of each of which is less than Rs. 300 per annum but not less than Rs. 75 per annum.

The total expenditure for the year amounted to Rs. 4,51.93 lakhs against the Budget Estimates of Rs. 4,71.87 lakhs. The final sanctioned grants including renewed grants and additional grants available for expenditure amounted to Rs. 5,25.68 lakhs. The unexpended balance thus amounted to Rs. 73.75 lakhs at the close of the year out of which an amount of Rs. 36.85 lakhs was renewed for expenditure for 1965-66 and the balance of Rs. 36.90 lakhs was allowed to lapse as savings.

The Opening Balance on account of Loan Funds excluding Trust Funds on 1st April 1964 was Rs. 71.59 lakhs. A new loan of Rs. 200 lakhs was proposed for 1964-65 but actually a loan of Rs. 125 lakhs was raised during the year. The total loan funds thus available amounted to Rs. 1,96.59 lakhs against which expenditure booked on loan funds amounted to Rs. 84.86 lakhs. An advance for purchase of furniture for new school buildings amounted to Rs. 9.54 lakhs out of which Rs. 2.19 lakhs were recouped. The closing balance at the end of the year in loan funds amounted to Rs. 1,04.38 lakhs.

The book value of Sinking Fund investments on 31st March 1965 amounted to Rs. 1,18,10,060 made up of Rs. 1,18,09,968 in securities and Rs. 92 in cash with State Bank of India. Valuing the Municipal debentures at par, the Market Value of Sinking Fund on 31st March 1965 was Rs. 1,16,60,277. This together with the interest of Rs. 1,79,768 and cash with the State Bank of India of Rs. 92 the total amount of Sinking Fund comes to Rs. 1,18,40,137 and more than covers the amount of Rs. 1,18,20,990 to which the Sinking Fund should have accumulated on 31st March 1965. The excess in the Sinking Fund investment thus came to Rs. 19,147.

The percentage of actual expenditure on Loan Works to the Loan Funds available (Budget Estimates) was 43. The Standing Committee again notes with concern the failure on the part of the Executive to expend the loan amounts sanctioned by the Corporation within

the scheduled limit and hope that more strenuous efforts will be put in to augment the Loan Works Programme under Budget 'E' especially as a large number of Municipal schools is located in private premises which are quite unsuitable for imparting instruction and further as the accommodation both in the private and Municipal owned school buildings is insufficient to accommodate the increasing number of pupils seeking admission to our schools and as a result whereof quite a large number of our schools are forced to meet in two shifts.

Taxation, Demands, Collection and Outstanding. During the year under report, the rates of taxation in the City, Suburbs and Extended Suburbs remained the same as in the previous year. The rates of tax on thus stood as follows:—

General Tax (including Fire Tax) at 24.75 per cent., Water Tax at 4.50 per cent. and Halal khore Tax at 3.50 per cent. Tax on vehicles and animals was levied at the maximum rate mentioned in Schedule 'G' of the Bombay Municipal Corporation Act. Rates charged for the supply of water by meter measurement ranged between Rs. 1.65 and Rs. 5.50 per 10,000 litres according to the class of properties. Education Cess was levied at a graduated scale. No Education Cess was levied on properties having a rateable value below Rs. 75. The demand in respect of this cess was for Rs. 80,71,613.99, collection Rs. 54,60,328.39 while Rs. 26,11,285.60 remained outstanding.

On the Assessment Register at the close of the year, there were 69,069, 62,670 and 28,718 properties in the City, Suburbs and Extended Suburbs, respectively. 65,739 properties in the City, 60,385 in the Suburbs and 27,823 in the Extended Suburbs were assessed to General Tax, while 2,188 properties in the City, 2,285 in the Suburbs and 895 in the Extended Suburbs were exempted from the General Tax, under Section 143(1)(a) and (b) of the Bombay Municipal Corporation Act, while the Municipal properties exempted from the General Tax numbered 1,142.

The number of properties accounted for as newly erected, demolished and enlarged during the year was 11,975, 501 and 904, respectively, the corresponding figures for the preceding year being 674, 545 and 836. The figures for Suburbs and Extended Suburbs stood at 5,735, 1,560 and 2,118, 1,210, and 286 and 162, respectively.

The rateable value of all properties in the City on 31st March 1965 was Rs. 35,89,736, in the City, Rs. 12,10,88,891 in the Suburbs and Rs. 3,78,63,002 in the Extended Suburbs as against Rs. 34,19,65,387, Rs. 10,30,92,855 and Rs. 3,07,83,369 in the preceding year. It worked out to Rs. 129.51, Rs. 116.87 and Rs. 110.16 per head of population as per the census of 1961, against Rs. 123.40, Rs. 99.50 and Rs. 89.56 in the preceding year.

Wheel tax in respect of hack-victorias, labour carts and hand carts was levied at Rs. 100, Rs. 135 and Rs. 6, respectively. The total number of bills in respect of property taxes and wheel tax issued during the year was 1,33,717 and 2,52,938 respectively for the City, 4,25,462 and 38,853 for the Suburbs and 58,293 and 6,431 for the Extended Suburbs. The total number of bills for water charges by meter measurement issued during the year by the Hydraulic Engineer was 37,293 for the City, 33,774 for the Suburbs and 14,398 for the Extended Suburbs. As regards property taxes, out of the net demand of Rs. 19,09,89,725, an amount of Rs. 14,22,37,330 was collected leaving the amount of Rs. 4,87,52,395 as outstanding, percentage of which to net demand comes to 25.52 for the City, the figures for Suburbs for net demand and collection stood at Rs. 4,24,33,698 and Rs. 2,57,80,554, leaving the balance at Rs. 1,66,53,144 and percentage 39.26. The net demand and collection in the Extended Suburbs stood at Rs. 1,11,82,875 and Rs. 63,62,813, leaving the balance at Rs. 48,20,062 and percentage at 43.10.

In the case of Wheel tax in the City, the net demand was for Rs. 81,06,408 and the amount collected was Rs. 53,07,882, thus leaving an amount of Rs. 27,98,526 as outstanding, the percentage of which to net demand comes to 33.28. As regards Suburbs and Extended Suburbs, the net demand was Rs. 13,53,873 and Rs. 2,29,635, the collection at Rs. 6,31,107 and Rs. 92,534 and the percentage at 53.58 and 59.71, respectively.

1,406 complaints under Section 167 of the Act against the rateable values amounting to Rs. 3,80,25,288 and 2,676 complaints under Section 162 against the value amounting to Rs. 3,45,67,611 were disposed of during the year under report. The total number of complaints in the Suburbs and Extended Suburbs under the aforesaid Section was 4,262 and 1,646, respectively.

The Urban Immovable Property Tax.

This tax was abolished from 1st April 1963. The arrears of the tax on 1st April 1964 were Rs. 33,05,506.12, Rs. 15,76,679.82 and Rs. 9,94,444.54 for the City, Suburbs and Extended Suburbs respectively. Out of this amount, a sum of Rs. 14,49,683.74, Rs. 4,45,045.15 and Rs. 1,86,780.84. was collected.

Theatre Tax.

11. There were in all 49 Class I and 20 Class II Cinema Theatres in the City and 15 and 8 Cinema Theatres in Suburbs and Extended Suburbs, respectively out of which 6 and 1 were Class I Cinema Theatres, and the tax was generally received regularly. Theatre Tax was also recovered in respect of the various dramatic performances, dances, variety entertainments, etc., held at various Halls, Theatres and other places in the City where admission was on payment of charges.

The rates of Theatre Tax for the year under report were Rs. 10 per show for Class I Cinema Theatres, Rs. 7 per show for Class II Cinema Theatres, Rs. 7 per show for Drama, Concert, Variety Entertainment or Tamasha, Rs. 10 per day for Circus, Carnival or Fete and Rs. 7 per show for any other entertainment. The total income derived by way of Theatre Tax during the year under report was Rs. 7,23,886.46 in the City, Rs. 1,73,472.50 in the Suburbs and Rs. 74,608.80 in the Extended Suburbs.

Exemption from payment of Theatre Tax was granted to such Cinema shows, performances, etc., as were held in aid of bonafide charities or directed towards advancement of cultural or educational activities and exempted from payment of Entertainment Duty leviable by the Commissioner of Police under the Bombay Entertainments Duty Act, 1923.

The Standing Committee note with concern the high persistent percentage of outstandings and hope that vigorous efforts will be made and if necessary, the collection machinery remodelled, in order to reduce the outstandings to the minimum possible extent as the revenue collection is the mainstay of Municipal finance and hence also of the Civic Administration of this great City.

TOWN DUTIES.

12. During the year, the rates of Town Duties continued to be the same as those prevailing in the previous year. The Bill to amend the B. M. C. Act, so as to revise the existing Town Duty Schedule and proposing Octroi instead of Town Duty was enacted into Law and the same was proposed to be enforced from 1st April 1965. The gross collections from Town Duties amounted to Rs. 192.71 lakhs as against Rs. 181.91 lakhs, in the preceding year. The amount refunded during the year under review was Rs. 29.40 lakhs as against Rs. 35.49 lakhs, in the previous year. Town Duties gave a net revenue of about Rs. 154.34 lakhs as against Rs. 146.41 lakhs in the previous year. The total number of claims for refund was 16,474 as against 18,343 in the preceding year.

Fees for stamping sugar bags, tea cases, etc., amounted to Rs. 1.76 lakh as against Rs. 1.57 lakh in the preceding year.

Town Duties collected at Mulund and Dahisar, etc., amounted to Rs. 73.64 lakhs as against Rs. 68.43 lakhs in the preceding year.

ELECTIONS.

13. The Municipal General Elections were ordinarily due to be held in January to March 1965. But the Bill for adoption of the State Legislative Assembly Electoral Rolls for the purposes of Elections to the Corporation was enacted into Law. This Act was enforced by the Government of Maharashtra with effect from 15th February 1965 and as per clause 4(b) of the said Act, the Government of Maharashtra issued a notification that the existing Municipal Councillors of the Corporation shall retire from office at noon on the 1st day of April 1966 instead of 1965. Accordingly, no Municipal General Elections were held during the period from January to March 1965.

Vaitarna-cum-Tansa Scheme.

14. During the year under review, the works of improving and asphaltting roads between Vaitarna and Tansa were completed on 30th April 1964 within the estimated amount.

Master Plan for the Distribution of Water Supply.

Miscellaneous works with regard to the Worli Hill Reservoir such as approach road to the control room, Drainage Systems, etc. were completed during the year at a cost of Rs. 2,70,000.

The Progress of the works in connection with Reservoirs at Rawli Hill, Gollanji Hill, Pali Hill, Powai Hill, Trombay Hill, Ghatkopar Hill, Veravali Hill, and Bhandup Hill was hampered due to shortage of cement.

The work of driving of tunnels between Mulund and Kandivli was in progress.

In connection with the work of strengthening the Tulsi Dam, the work of stabilising the waste weir was completed. Rest of the work was in progress.

The Corporation sanctioned laying of a new 108" dia. steel pipe line between Tarali and Kasheli and the work was in progress at the end of the year.

Government of Maharashtra approved reservation of (i) Bhatsai and (ii) Upper Kalu Sources for augmentation of City's water supply. Preliminary survey for Bhatsai River Scheme was started. Preliminary works in connection with the scheme have been sanctioned by the Corporation. A feasibility Report on the scheme was prepared and submitted to the Government of India for sponsoring the scheme for World Bank Assistance.

The work of the Kalu River Scheme was deferred in view of Bhatsai Scheme being proposed for implementation first.

Planning Section, Public Works.

15. The Architectural Planning Branch for the City, Suburbs and Extended Suburbs prepared in all 60 Plans, 15 Block Estimates and 56 Detailed Estimates costing Rs. 452 lacs and Rs. 581 lacs, respectively.

Municipal Properties.

16. The total number of properties both Municipal and *ex-Trust* maintained by the Maintenance Branch during the year was 3,528 as against 3,316 in the previous year. The amount spent on 235 buildings in the Suburbs and 63 in the Extended Suburbs for such works was Rs. 4,22,058 and Rs. 49,839, respectively. The work of upkeep and maintenance of buildings including school buildings was carried out partly by contracts and partly by departmental agency at a cost of about Rs 12.78 lacs in the City and Rs. 13.80 lacs in the Suburbs and Extended Suburbs.

Construction.

During the year under report works estimated to cost Rs. 2,04.60 lacs were completed. Works estimated to cost Rs. 2,23.66 lacs were in progress. The Corporation approved in principle the construction of tenements by the Corporation and handing them over to Co-operative Housing Societies. Plans and estimates were prepared for the construction of 240 tenements for Co-operative Housing at Haji Alli.

Private Buildings.

17. During the year 5,773 applications were received for the construction of new buildings or additions and alterations to the existing ones. The total number of new buildings constructed by private enterprise during the year was 1,516 of which 1,237 were residential and 370 non-residential, 337 buildings were constructed by Co-operative Societies and 57 by employers for their employees. Although there has been some improvement in the building activity during the year, much requires to be done. If proper encouragement and guidance is given, the Standing Committee is confident that the Co-operative Housing will be of great help in solving the baffling housing problem.

In the case of dilapidated houses, the issue of notices and launching of prosecutions continued as before. In all 36,585 notices were issued for repairs and/or removal of unsafe buildings. In deserving cases, where the owners resorted to delaying tactics or refused to comply with Municipal requisitions, authorisations under Section 499 of the Act, were given to tenants to carry out repair works and to recover reasonable expenses incurred by them from the rents. In 162 cases such authorities were given during the year as against 171 in the previous year and 2,720 tenants took advantage of it.

In 197 cases, departmental action had to be taken to pull down unsafe portions of buildings in the interest of public safety, as the owners failed to comply with the Municipal requisitions meeting the cost in the first instance from the special provision made for the purpose in the Budget and an expenditure of Rs. 95,093 was incurred therefor.

During the year, 145 buildings or portions thereof collapsed. The total number of persons injured was 89 and those killed was 9. The estimated damage to property was Rs. 13.18 lacs.

Slum Clearance, Housing and Land Acquisition.

18. The various works under the Slum Clearance Schemes during the year were in progress.

Clearance of Municipal Slums.—By the end of the year 12 Slums were cleared and redeveloped. Clearance and re-development of 5 slums in stages was in progress.

Tenements under the Government of India's subsidised Slum Clearance Scheme.—Under the Scheme, 4,732 tenements were sanctioned. Out of these, 791 tenements were completed during the year, bringing the total number of tenements completed upto 31st March 1965 to 3,875. Construction of 320 tenements was in progress on 31st March 1965.

Financial Assistance from Government under subsidised Slum Clearance Schemes.—The Corporation have received Rs. 12.80 lacs by way of loan and Rs. 14.25 lacs by way of subsidy from the Government during the year under report. The Corporation has thus so far, received Rs. 88.77 lacs by way of loan and Rs. 107.47 lacs by way of subsidy upto 31st March 1965.

A further project of Slum Clearance Scheme of an outlay of Rs. 1.16 lacs envisaging construction of 1,766 tenements in Greater Bombay was formulated and forwarded last year to Government for their sanction and Government sanction to this programme was awaited.

Drainage and Sewerage.

19. *Dadar Purification Works.*—The Sewage Purification Works at Dadar functioned satisfactorily throughout the year under report. The total quantity of sewage received at the Plant during the year was 36,043.64 Mega Litres, i.e., an average of 99.19 Mega Litres per day. The total quantity of sludge gas generated during the year was 22,28,619.74 C.M. The daily average production was 6,105.81 C.M. as against 5,594.64 C.M. last year. The total revenue realised during the year by sale of gas amounted to Rs. 2,26,960.19 as against Rs. 2,15,696.00 during the previous year.

Love Grove Pumping Station and Purification Works.

The working of the old and new pumping stations was satisfactory during the year under report.

Dharavi Purification Works.

The Sewage Purification Plant worked normally. The revenue realised from the sale of gas supply amounted to Rs. 45,900 and the realisation from the sludge manure sold was Rs. 1,033.50.

Pumping and Compressor Stations and Ejectors.

The sewerage system of the City depends upon the satisfactory working of Pumping and Compressor Stations. Sewage from the sewerage system of the City was pumped through all pumping stations.

The work of laying sewers in various parts of the Suburbs and Extended Suburbs was in progress.

Transport.

20. During the year, 500 motor vehicles and 356 trailers (including Suburban fleet) were in commission.

The transport fleet for the removal of refuse consisted of 234 vehicles of different types. As this fleet was not sufficient to cope up with the daily output of refuse, extra vehicles from the Maharashtra State Transport Corporation had to be requisitioned for the removal of refuse. The average collection of refuse in the City worked out to 2,000 tons per day.

Repairs and Maintenance of Roads and Footpaths.

21. The total mileage of roads in the City, Suburbs and Extended Suburbs at the end of the year was 2,89,332, 206.59 and 78, respectively.

The work of maintenance of roads and footpaths was generally satisfactory throughout the year.

The number of street lights increased from 8,281 to 8,668 in the Suburbs and from 2,638 to 2,884 in the Extended Suburbs at an expenditure of Rs. 10,49,460 and Rs. 2,11,004, respectively.

The number of street lamps in the City at the end of the year was 14,581 as against 14,122 in the previous year. An expenditure of about Rs. 37.26 lacs was incurred for lighting and maintenance of street lamps.

The lighting of roads was improved with HMV lamps under the 'All-in-Hire Scheme' and 13 roads were provided with electric and gas lamps. 10 roads were provided with new lighting arrangements.

The work with regard to the Princess Street overbridge for vehicular traffic was in progress. The work of fly over at Kemp's Corner and footbridges at Marine Lines Station and Charni Road Station was completed.

Removal of Town Refuse.

22. As in the past a major portion of the City refuse was transported to Deonar for disposal.

The total number of wagons sent to Deonar during the year under report was 23,022 as against 24,442 during the preceding year.

As the number of Municipal wagons was insufficient to transport the huge quantity of city refuse, 61 wagons were taken on hire from Western Railway during the year at the charges of Rs. 4.50 per wagon per day.

The cost of maintenance of Mahalaxmi and Chembur Sidings was Rs. 24,137.10.

Town Planning Schemes.

23. No progress was made in case of Town Planning Scheme, Bombay City No. I (Mandvi and Elphinstone Estate). No alternative accommodation could be provided to tenants likely to be affected.

The implementation of Town Planning Schemes, Bombay City No. II and III (Mahim-Area) was nearly completed during the year. The implementation of Town Planning Scheme, Bombay City No. IV (Mahim Area) was in progress.

There were 25 Town Planning Schemes in the Suburbs and 3 in the Extended Suburbs. Two Schemes were finalized. In some cases, plans and revised estimates had been prepared. Some were at arbitration stage. Vile Parle No. V. was in the initial stage of making.

During the year, final Development Plan with its Report and other relevant data as required under the Bombay Town Planning Act of 1954 were submitted to the State Government on 8th July 1964. They were also circulated to the Members of the Corporation.

Conservancy.

24. Roads, footpaths and house gullies were swept twice daily. House gullies were flushed and roads were brushed, scrapped and washed periodically. The total refuse collected and removed through the Municipal agency was 7,30,000 tons in the City, 87,020 tons in the Suburbs and the Extended Suburbs.

4,470 Actions under the Municipal Act and the Bombay City Police Act were taken during the year for committing nuisance by throwing refuse in the streets or public places or fouling roads by urinating, etc.

There were in all 1,412 privies with 230 cesspools and 12 septic tanks in the City. The work of removal of night-soil was attended to regularly by 5 cesspool lorries.

There were 124 public sanitary conveniences in the Suburbs and Extended Suburbs.

The number of basket privies existing was 11,775 as against 12,155 during the previous year. The reduction is due to the progress of sewerage schemes. In addition there were 4270 cesspools.

Control of Stray Dogs.—58,176 stray dogs were caught and destroyed. The total income by way of dog licensing fees, etc., in the City was Rs. 53,040.90 as against Rs. 45,345.25 in the previous year.

The work of immunizing the milch cattle against Rinder Pest was continued and 42,841 milch cattle were inoculated as against 39,928 in the previous year. No cases of Rinder Pest were detected during the year.

In addition to the above, the Conservancy Branch also rendered special conservancy and halalkhore services to various circuses, exhibitions, fairs, etc., in the City, realising there-by Rs. 1,58,051.38. Besides Rs. 92,487 were paid by Government for services rendered for cleansing Government foreshores.

9,541 different kinds of tests were made by the Municipal Material Testing Laboratory during the year.

Mechanical Branch.

3,360 Jobs were completed at the Municipal Workshop, Foras Road, during the year. The expenditure on departmental and private works amounted to Rs. 6,56,163.

The Municipal Hot Mix Asphalt Plant at Worli worked for 235 days and remained closed for 130 days on account of rainy season. The number of boxes and tonnage turned out by the main plant and pegson plants were 53,917 boxes and 4,618 boxes, approximately respectively.

The Crushers at Worli and Sewri worked satisfactorily during the year. The total output was 4,144 brass as against 4,348 brass in the previous year.

Estate and Land Management.

25. The Department continued to look after the work of acquisition of lands and preparation of layouts, etc., as before.

13 Plots in Municipal Schemes admeasuring 30,015.82 sq. yds. fetching Rs. 12,71,631 were disposed of during the year.

Possession in respect of 9 properties in the City and 8 properties in the Suburban area was obtained during the year under report. Acquisition proceedings in 78 and 18 cases were in progress during the year under report and approval of the Corporation was awaited in respect of 27 properties. There were no changes in layout in *ex-Trust* Estates.

The total area available for disposal in Municipal laid out schemes, on 1st April 1965, was about 3,806 sq. yds., but the same was retained for Municipal purposes.

The total number of plots disposed of upto the end of 1964-65 was 4,326 admeasuring 61,29,931 sq. yds. and valued at Rs. 13,06,20,398 yielding an annual rent of Rs. 46,37,870.

The amount received by way of commutation of ground rent and premium during the year was Rs. 5.96 lacs as against Rs. 4.14 lacs in the preceding year.

The collection on account of rents from the permanent chawls during the year amounted to Rs. 19,62,831. The revenue actually collected on account of rents in respect of S.P. sheds came to Rs. 11,20,344. The figures in respect of slum clearance tenements and acquired premises stood at Rs. 11,22,336 and Rs. 9,80,386, respectively.

568 tenements were constructed at Rawli Camp, Sion, Kamathipura & Bandra during the year under Slum clearance scheme.

The recoveries of rent in the Squatters' Colonies at Mankhurd and Jogeshwari were Rs. 11,384 and Rs. 38,078 against the demand including the arrears of Rs. 9,36,017 and Rs. 3,79,456, respectively and at Palton Road Dormitory amounted to Rs. 49,239 during the year.

During the year under review, the demand and recovery of taxes aggregated to 1,00,606 and Rs. 62,599 respectively. The arrears due for collection at the close of the year stood at Rs. 7,80,278.

The Corporation decided to permit the area under silt free of extra ground rent for parking purposes and not to count the said area in the F. S. I. nor is it to be treated as a floor under lease.

The Corporation have permitted the permissible floor area under lease to be spread over on any number of floors permitted even in excess of Index under Development Plan and that too free of extra ground rent.

The Corporation have fixed a scale for charging extra ground rent for change of users, encroachments, rewas projections or additional floors over factory estatewise for all the three users, viz., residence, business and industries.

Water Supply.

26. The Tansa and Vaitarna Lakes were the principal sources of the City's water supply. The Tulsi Lake and the Vehar Lake also supplied water to the City.

The average daily supply to Greater Bombay during the year under report was about 928.61 mega litres as against 947.42 mega litres in the previous year. During the year, the quantity of water supplied to Greater Bombay was 3,38,952.22 mega litres against 3,46,761.50 mega litres in the preceding year. Supply to the Thana Municipality, etc., was 3,760.07 mega litres as against 3,197.70 mega litres in the previous year. Total quantity of water supplied to bodies outside the limits of Greater Bombay was 6,302.03 mega litres as against 6,155.27 mega litres in the preceding year. Of the total supply to Greater Bombay, a quantity of 2,04,549.72 mega litres or 60.35 per cent. was for domestic purposes as against 1,16,519.19 mega litres or 46.66 per cent. in the previous year. The average daily supply for all purposes per head in Greater Bombay was 225.58 litres, while that for domestic purposes only worked out to 120.41 litres. Percentage of total supply for domestic and other purposes worked out at 60.35 and 39.65, respectively.

The new scheme of supplying water to Aarey Milk Colony was introduced with effect from 17th April 1964 under which Tulsi Lake water being used for stables was curtailed and diverted for use in Extended Suburbs in lieu of which Powai Lake water was supplied to Aarey Colony for the use of stables by an independent pipe line.

The total number of water connections was 76,528 in the City, 25,255 in the Suburbs and 6,745 in the Extended Suburbs and new connections given were, respectively, 2,377,1605, and 948. The total number of meters maintained was 21,286.1,574 additional meters were fixed on new and existing connections. 100 metered stand-pipes were given during the year. The total number of stand pipes in the Suburbs was 685 of which 84 were for gratuitous use of public and the remaining were on payment. The total number of stand-pipes in the Extended Suburbs was 121 out of which, 45 were gratuitous.

The number of complaints about short supply, etc., were 6,556 and 1,600 in the City, Suburbs and Extended Suburbs, respectively.

159 new properties were metered during the year. 82 restaurants were also metered as against 66 during the previous year. The total revenue derived from water supply by meter measurement was Rs. 4,11,47,823.85 for the City as against Rs. 4,08,47,626.58 during the previous year. The total revenue collected from Suburbs by way of meter hire in initial stages was Rs. 10,836 and that from supply of water by meter measurement about Rs. 2,01,109. An amount of Rs. 6,52,328 was recovered by way of compounded charges. The figures for Extended Suburbs for these items are Rs. 6,014, Rs. 1,16,733 and Rs. 2,57,061, respectively.

With the creation of new ward offices the work of distribution, maintenance and meters was decentralised and was entrusted to Assistant Engineers for each of the wards. This measure helped prompt disposal of complaints, maintenance work and disposal of papers.

Staggering of water supply hours also helped reduce the complaints about shortage of water to a minimum.

The Standing Committee however, feel that further steps are required to be taken to ensure equitable distribution of water till resources are adequately augmented.

Fire Brigade Department.

27. During the year, the total number of Fire Stations was 14, viz., 11 in the City proper and 3 in the Suburbs as in the previous year.

The Fire Brigade received during the year 3,358 calls (including City, Suburbs and Extended Suburbs) as against 3,344 calls during the preceding year. Out of these 1,722 calls were for actual fires as against 1,828 calls during the preceding year. 605 calls were false alarms of which as many as 245 were due to malicious interference with street fire alarms as

against 171 in the preceding year. 781 calls as against 694 in the preceding year were for special services, such as, house collapses, rescue works, etc. Three persons were handed over to the Police for giving malicious calls.

The City continued to be served by 219 fire alarm posts (including 34 private ones), as in the preceding year.

There were 12 serious fires during the year. The estimated total loss to property damaged by fire was about Rs. 118.84 lakhs as against Rs. 73.25 lakhs during the previous year. The value of the insurance of properties affected by fire was about Rs. 1,12,21,965, as against Rs. 45,03,992 during the previous year and the total value of the property involved was worth Rs. 42 crores as against Rs. 50 crores in the preceding year.

During the year 136 persons lost their lives due to burns, of which 32 were men, 102 women and 2 children. 113 persons received minor injuries and 16 persons lost their lives in 239 incidents of house collapses during the year.

The approximate quantity of water used in extinguishing fires was 26.88 lacs gallons out of which 18.63 lacs gallons were drawn from Municipal mains, as against 40.71 lacs gallons and 37.80 lacs gallons, respectively, for the preceding year and the rest from the sea, wells, ponds, etc.

The total number of calls within the limits of Greater Bombay received during the year was 9,830 of which 1,640 were for accidents, 2,446 for maternity cases and 5,685 for hire cases. First-Aid was rendered by the Ambulance staff on 325 occasions as against 32 occasions in the previous year.

The annual maintenance cost of the Fire Brigade Department including the ambulance service but excluding the supervision charges of Provident Fund, Pension, and proportion of general supervision and revenue and debit charges, etc., was Rs. 21,73,564.24 as against Rs. 19,42,376 in the preceding year.

In accordance with Government orders, Fire Brigade Department continued to be under the control of the Director of Civil Defence, Government of Maharashtra.

With effect from March 1965, Greater Bombay has been divided into Regions, Zones and Sectors. With the introduction of new system it is hoped that the services will be rendered more efficiently.

Public Gardens.

28. During the year under report, the Department maintained 147 sites for public recreation, including 42 Gardens, 2 Fountains, 8 Band Stands, 9 Traffic Islands, 5 Open Spaces, 73 Recreation grounds, 3 Statues and 5 Box Hedges in the City, 33 gardens including 2 play grounds in Suburbs and 8 Gardens in the Extended Suburbs. During the year development of 9 new sites into gardens and recreation grounds was undertaken and development of 7 new sites into gardens was under progress at the end of the year under report.

During the year, 177 wild animals and birds were treated in the Zoo hospital and 165 specimen of pathobacteriological interest were examined at the Senior Veterinary Inspector's Office and the Bombay Veterinary College.

The Standing Committee re-iterate that in order to have a clear picture, the statement of Income and expenditure should be submitted along with the report.

Victoria & Albert Museum.

29. The Museum was kept open to the public for 302 days as against 299 days in the preceding year. The total number of visitors during the year was 8.27 lacs as against 8.28 lacs of the preceding year.

The amount realised by the levy of admission fee was Rs. 18,359 as against Rs. 18,642 in the preceding year. The total expenditure on the maintenance of the Museum during the year amounted to Rs. 0.52 lac as against Rs. 0.48 lac during the preceding year.

Municipal Free Reading Rooms and Libraries.

30. During the year under report, there was an over-all increase in the number of books but not of visitors. The total number of books in Libraries in the City, Suburbs and Extended Suburbs was 5,964, 2,188 and 816, respectively, and the number of visitors to the Reading

Rooms and Libraries in the respective areas was 5.18 lacs, 1.39 lacs and 0.41 lac, as against 5.30 lacs in the City and 1.42 lacs in the suburbs and 0.36 lac in the Extended Suburbs during the preceding year. The income from the Libraries and Reading Rooms in the City, Suburbs and the Extended Suburbs stood at Rs. 1,743, Rs. 1,053 and Rs. 1,728 (including grant-in-aid of Rs. 1,000 from Government to the Libraries in the Extended Suburbs).

One new Municipal Free Reading Room and Library was opened at Lower Parel.

The Standing Committee are, therefore, distressed to note the fall in the number of visitors to the Libraries especially in the City and Suburbs. Efforts should, therefore, be made to accommodate the Municipal Free Reading Rooms and Libraries in commodious and well ventilated premises besides increasing their number.

Central Stores.

31. Tenders were invited for the purchase of stores during the year in 195 cases as against 188 in the previous year and the number of contracts entered into for the various scheduled articles was 294 as against 278 in the preceding year. The value of stores and other materials purchased including articles received from other Departments on Return Stores Memo. during the year amounted to Rs. 133.45 lacs as against Rs. 105.92 lacs in the previous year.

During the year about 6,159 Metric tons of cement worth about Rs. 9.46 lacs were purchased. Likewise 2,04,699 R.ft. of Cast Iron Pipes worth about Rs. 45.48 lacs were purchased. Similarly, the Department also purchased 3,323 quintals of wheat and rice for various Municipal Hospitals and Maternity Homes worth about Rs. 1.91 lacs. There were about 30 tenders for dietary articles amounting to Rs. 15.46 lacs approximately.

5,934 orders for the purchase of stores against 5,793 in the preceding year were placed with contractors and other dealers. Against these purchases and stock on hand, the consuming departments submitted 24,419 indents and Sales Memo. as against 22,904 in the preceding year. The total turnover of the department, viz., Receipts and Issues of stores during the year was Rs. 263.07 lacs as against Rs. 241.17 lacs in the preceding year. At the close of the year, the department had on hand stores of the value of Rs. 64.98 lacs against Rs. 61.15 lacs, in the preceding year.

The total amount realised by the sale of unserviceable articles through private offers including mixed scrap amounted to Rs. 2.43 lacs as against Rs. 3.10 lacs in the preceding year.

Licence Department.

32. During the year the amount collected by way of licence fees, permit fees and transfer fees was Rs. 35.67 lacs.

From the permits issued for exhibiting sky-signs, advertisements, etc., the total revenue realised was Rs. 5.31 lacs in the city, Rs. 1.70 lacs in Suburbs and Rs. 0.35 lac in Extended Suburbs, the corresponding figures for the last year being Rs. 8.17 lacs in the City, Rs. 1.89 lacs in the Suburbs and Rs. 0.21 lac in the Extended Suburbs.

The Department instituted 1,722 cases in the City, 1,462 cases in the Suburbs and 228 cases in the Extended Suburbs for offences under Sections 328, 328A, 394 and 412A of the Bombay Municipal Corporation Act. The total amount of fines inflicted was Rs. 59,485 in the City, Rs. 43,150 in the Suburbs and Rs. 10,120 in the Extended Suburbs.

The number of squatters' and hawkers' licences issued were 51,159 in the City, 13,905 in the Suburbs and 1,028 in the Extended Suburbs. The amount realised therefrom was Rs. 9,77,512 for the City, Rs. 1,53,657 for the Suburbs and Rs. 36,056 for the Extended Suburbs respectively.

In order to do away with hap-hazard manner of private stalls on footpaths in different parts of the City, it was decided to replace the private stalls by municipal stalls of uniform and standard design as a regulatory measure.

The Shops and Establishments Department which was hitherto a separate Department merged with the Licence Department from 19th December 1964.

33. The total number of establishments under the various categories including Theatres, etc., on 31st March 1965, was 81,093 in the City, 15,136 in the Suburbs and 6,716 in the Extended Suburbs as against 77,827 in the City, 15,468 in the Suburbs and 6,753 in the Extended Suburbs in the last year.

During the year under report 1,747, 199 and 10, complaints respectively pertaining to City, Suburbs and Extended Suburbs were received in addition to complaints pending from the preceding year, out of which 1,764, 206 and 10 were investigated, leaving 47,2 and 1 complaints pending at the close of the year.

At the beginning of the year 2,106, 282 and 65 prosecutions were pending while 6,780, 1,137 and 394 new prosecutions were instituted during the year. Of these prosecutions 7,187, 1,137 and 384 resulted in convictions, 26, 5 and 1 in acquittals while 12 cases in the City were abated and 82, 7 and 24 cases were withdrawn. The number of cases pending at the end of the year was 1,579, 270 and 50. The total amount of fines realised was Rs. 2,53,552, Rs. 37,785 and Rs. 12,410 as against Rs. 1,56,113, Rs. 19,430 and Rs. 7,315 in the previous year.

The total expenditure incurred in the administration of this Act, the Payment of Wages Act, the Minimum Wages Act and the Workmen's Compensation Act, during the year was Rs. 5,01,445, Rs. 1,03,164, and Rs. 47,398 for the City, Suburbs and Extended Suburbs (exclusive of Provident Fund, Leave Contributions and supervision charges) against which a grant-in-aid of Rs. 1,93,894 was received from Government for the year 1964-65, for meeting part of the expenditure incurred during the year 1963-64.

The total income by way of Registration fees, etc., for the year amounted to Rs. 2,19,492 Rs. 38,517.75 and Rs. 18,395 for the City, Suburbs and Extended Suburbs which shows a considerable decline.

261 complaints pertaining to the Payment of Wages Act in the City and 20 for the Suburbs were received. Only 4 complaints were pending disposal at the close of the year under report.

Markets and Slaughter Houses.

34. The total income of the Department for the City, Suburbs and Extended Suburbs during the year was Rs. 80.78 lacs as against Rs. 76 lacs in the previous year, showing an increase of Rs. 4.78 lacs. The increase in the total receipts was mainly due to the revised stallage charges of stalls in Municipal Markets.

During the year there were 49 Municipal and 26 private markets and 5 slaughter houses. The number of outside meat shops was 198. The licence fees realised from private markets and outside meat shops were Rs. 1,03,788 and Rs. 18,850, respectively. The work of collecting Scale fees at the Mahatma Jyotiba Phule Market continued to be carried out departmentally and the revenue collected therefrom amounted to Rs. 8.91 lacs as against Rs. 8.17 lacs, realized in the preceding year.

The work of shifting the Slaughter House from Bandra to Deonar was in progress.

Surprise raids to detect and prevent the smuggling of animals and contraband meat and unauthorised slaughter as also insanitation and congestion in markets were carried out during the year.

The total number of animals slaughtered during the year was 12.75 lacs as against 13.69 lacs during the previous year.

The Standing Committee stresses the need of developing these services still further coupled with the increased amenities to the public on proper lines as they give additional revenue.

Municipal Printing Press.

35. During the year under report 378 metric tons of paper was purchased. The total number of printing jobs carried out was 13,279 and the number of pages printed was 62,437 as against 15,619 and 61,231 in the preceding year. The total quantity of paper consumed during the year under report was 303½ metric tons as against 276 metric tons in the previous year.

The transactions of the Press for the year closed with a surplus of Rs. 13,302 on the total turnover of Rs. 17.86 lacs against the surplus of Rs. 0.09 lac and the turnover of Rs. 15.55 lacs for the preceding year. The labour staff as on 28th February 1965 consisted of 277, workers as against 246 on the 25th February 1964.

K. E. M. Hospital.

36. The bed accommodation in the Hospital was 1,038 during the year under report. Throughout the year there was constant overcrowding in the Hospital particularly in the Children and the Medical and Surgical Wards for females. In order to avoid overcrowding in the Medical Ward for females, an additional ward with eighteen beds was opened. The total number of in-patients admitted during the year was 50,394 as against 47,009 in the previous year. The daily average number of in-patients was 1,213 as against 1,196 in the preceding year. The average number of days each patient was resident was 8.02 days as against 9.27 days in the last year. The average cost per in-patient per day was Rs. 13.64 as against Rs. 12.85 in the previous year.

The total number of new out-patients treated was 2,94,408 as against 2,84,605 in the preceding year. The out-patients attendance including casualty patients during the year came to 8,23,824 as against 7,46,707 in the preceding year. The daily average attendance of out-patients was 2,692 as against 2,480 in the preceding year.

Haematology Department was opened during the year under report at the out-patient Department for the benefit of the Public.

17,014 operations were performed on in-patients and 33,401 operations were performed on out-patients.

The Dr. Jivraj N. Mehta Pharmaceutical Laboratory attached to the Hospital manufactured many injectables, viz., 68,769 transfusion bottles, 500 ml. 1,162 ampules and about 4,318 litres of loose sterile solutions and 89.15 litres of Stain and Miscellaneous Solutions. The market value of the above product was Rs. 2,12,634. The Blood Bank worked satisfactorily and during the year 6,772 Blood samples were supplied for transfusion and 6,832 samples of blood were collected including the voluntary donors, at a cost of Rs. 70,082. The amount was paid from the Poor Box Charity Fund.

A Family Planning Centre, which is aided by Government of India, continued to work satisfactorily during the year. 108 operations were performed at the centre.

1,986 Food Handlers working in hotels and restaurants in the City were referred to the hospital for examination of which 1,478 persons attended. 141 persons did not give their stools, etc., for pathological examination and hence their report remained incomplete.

The total expenditure incurred during the year for the maintenance of the Hospital was Rs. 72.58 lacs as against 67.39 lacs in the previous year.

Seth G. S. Medical College.

37. During the year under report, 168 admissions were made *i.e.*, 8 more than in the previous year. There are 60 overseas students on the roll.

The number of male students residing in the Male Students' Hostel during the year was 140, while the number of lady students accommodated in the Lady Students' Hostel was 60. In order to meet the increasing demand for under-graduate students as also interneers, research students, etc., a new Hostel at Naigaum was acquired with an accommodation for 83 students. During the year, 283 students took advantage of this hostel.

The different departments of the College and the Hospital, in addition to their normal teaching and departmental works, conducted various researches under the auspices of the Indian Council of Medical Research, Council of Scientific and Industrial Research, K. E. M. Hospital and Seth G. S. Medical College Staff Research Society and other institutions, etc.

The progress of other activities like Library, Museum, Gymkhana, etc., was satisfactory.

E. N. T. Hospital.

38. The Hospital has a provision for 100 beds, of which only 94 were put to use. The total number of patients admitted in the hospital during the year was 5,454. Excepting 9 patients who died and 67 patients who were receiving treatment at the end of the year, all others were either cured, relieved or discharged or had left against medical advice.

In all 6,415 operations were performed of which 1,397 were on out-patients and 5,018 on in-patients as against 679 and 3,214 in the preceding year.

The Standing Committee notes with satisfaction that this Hospital has become popular in a short time.

Bai Yamunabai L. Nair Charitable Hospital.

39. The Hospital has an accommodation of 336 beds, fully occupied throughout the year. During the year, on an average 469.04 in-patients were admitted in the Hospital, as against the scheduled number. The total number of in-patients admitted during the year was 25,649 as against 23,312 during the previous year. The total number of in-patients treated was 26,109. The average cost per day per in-patient was Rs. 13.43 against Rs. 10.68 during the previous year.

The total number of out-patients treated was 3,42,187 as against 3,33,738 during the previous year and the average number of out-patients' attendance per day was 1,118.25 against 1,097.82 of the previous year.

Dr. Bhajekar Municipal Hospital at Khetwadi continued to be under the supervision of the Dean, B. Y. L. Nair Charitable Hospital.

The total expenditure incurred on the maintenance of the Hospital including liabilities amounted to Rs. 28.23 lacs against Rs. 26.92 lacs during the last year.

The report shows that most of the Municipal Hospitals had to admit many more in-patients than the scheduled strength of the beds in the hospital. The Standing Committee feel that this state of overcrowding ought to receive immediate attention of the Executive.

Topiwala National Medical College.

40. The College had 484 under-graduate students on the roll at the close of the year, out of whom 245 were lady students. Besides, there were 161 post-graduate students including 43 lady students.

The total expenditure incurred on the maintenance of the College amounted to Rs. 10.08 lacs as against Rs. 7.79 lacs during the previous year. The total income by way of tuition fees, miscellaneous, etc., receipts amounted to Rs. 2.28 lacs as against Rs. 2.15 lacs during the last year.

1033 books were added to the Library during the year of which 394 were received by way of presents. This brought the total number of books in the Library to 10,936 as against 9,907 in the previous year.

Nair Hospital Dental College.

41. During the year under report, 61 students including 7 ladies passed the Final B. D. S. and M. D. S. Examinations of the Bombay University from the College. The College has 87 Dental Chairs, 60 Dental Units and 2 Dental X-Ray Machines, to give dental treatment on modern lines and also to facilitate teaching of dentistry. During the year, 1,68,635 patients were treated as against 92,715 during the previous year. 2,264 municipal school children were treated in the clinics. The total expenditure incurred was Rs. 6.31 lacs as against Rs. 5.16 lacs, in the preceding year and the total revenue was Rs. 1.89 lacs, against Rs. 1.76 lacs during the preceding year.

Lokmanya Tilak Municipal General Hospital, Sion, and Bai Annapurnabai Deshmukh Hospital for Women and Municipal Medical College, Sion.

42. The bed accommodation of the Hospital was 475, (415 non-paying, 50 part-paying and 10 reserved for B.E.S. & T. employees). 37,343 patients were admitted during the year as against 31,440 during the preceding year. The daily average number of in-patients was 646 as against 570.3 in the preceding year. The average number of days each patient was resident was 6.3 as against 6.6 during the preceding year.

The average cost per in-patient on diet per day was Rs. 1.11 as against Rs. 1.23 in the preceding year. The total average cost per day per in-patient was Rs. 13.89 as against Rs. 12.63 in the preceding year.

The total number of new out-patients was 1,91,001 with a daily average of 626 as against 1,77,310 and 581, respectively, in the preceding year. The total number of out-patients attendance was 7.47 lakhs. The highest number of out-patients attendance on a single day was 4,808 as against 3,494 in the preceding year.

The Paying Bed Scheme which started from 1st September 1951 worked satisfactorily. The number of patients admitted in the General and Special rooms during the year was 1,957 as against 1,706 during the preceding year.

The approximate total expenditure during the year under report was Rs. 39.04 lakhs as against Rs. 30.63 lakhs in the preceding year.

Municipal Medical College attached to this Hospital was started from 30th November 1964 with 60 students to begin with.

Group of T. B. Hospitals, Sewri.

43. The total number of beds for T. B. patients at the Corporation's disposal was 1,048, viz., Group of T. B. Hospitals, Sewri, 760; Isolation Centre attached to the Ramkunwar Daftary T. B. Clinic Da'ar, 88, and Sarvodaya Hospital, Ghatkopar, 200 (reserved for the Corporation). The total number of patients treated was 5,768 as against 5,999 during the previous year. Of these 5,065 were discharged as improved, 25 were non-Tuberculosis cases, 234 left prematurely against advice, 382 died and 727 remained under treatment at the close of the year. Mortality figures reveal high incidence in the age group 20-30 years. The rate of deaths per cent. to the total number of patients treated was 6.6. Major lung operations were performed in 304 cases.

As many as 1,557 patients attended the follow-up examination for check up after discharge from the hospitals during the year.

The total expenditure incurred during the year on the Group of T. B. Hospitals, Sewri, was Rs. 28.39 lacs against Rs. 22.56 lacs in the previous year. The average expenditure per patient per day was Rs. 9.91 as against Rs. 9.11 in the previous year.

The expenditure incurred during the year by the Corporation for treatment, etc., at the Sarvodaya Hospital, Ghatkopar, was Rs. 3.82 lacs plus Rs. 0.43 lac for medicines, as against Rs. 3.66 lacs plus Rs. 0.37 lac for the previous year, respectively.

The Administration Report for the year 1963-64 had revealed that the heaviest mortality during that year was in the age groups of 41 to 45 years. The Standing Committee are distressed to note that the high incidence of mortality is in the age group of 20-30 years. The Standing Committee reiterate that in the interest of the City's health, it is necessary that steps should be taken for detection of such cases in primary stage and for thorough treatments so that high incidence of mortality due to this disease may be reduced and infection at young age may be arrested.

Legal Department.

44. During the year under report, the Department continued to attend to contested matters and other legal proceedings in the High Court, City Civil Court, Small Causes Court and Police Courts as also to other legal matters. During the year, the Department received 20,000 files, against 14,371 in the previous year, addressed 4,200 letters against 2,120 in the preceding year to outside parties or their legal advisers and gave opinions and advices on different departmental matters.

The income by way of costs recovered amounted to about Rs. 30,100 and expenditure to about Rs. 2,25,144 as against Rs. 19,400 and Rs. 1,27,650, respectively, in the preceding year.

Municipal Courts for conducting enquiries under Section 105(B) of the Bombay Municipal Corporation Act were placed in charge of the Legal Department during the year under report. 226 cases were received for enquiry and, 2,327 presentation forms were registered.

Education.

45. At close of the year, there were 4,34,535 pupils in 759 schools and 133 classes in Greater Bombay, the number in the City being 2,66,110 pupils in 447 schools and 57 classes; in the Suburbs 1,30,372 pupils in 238 schools and 52 classes and in Extended Suburbs, 38,043 pupils in 74 schools and 24 classes. During the year, there was a net increase of 25,075 pupils in Municipal Schools. The total number of teachers in Greater Bombay at the end of the year was 12,134 including special teachers.

From 1st July 1964, Administrative Officers were appointed for each ward in place of Beat Officers and were entrusted with the full administrative responsibility of all Schools with the ward.

With a view to avoiding over-crowding in classes and to facilitate proper attention to pupils, it was laid down that ordinarily a class should not have more than 50 pupils. In schools housed in hired residential buildings, over-crowding on account of inadequate space was an impediment in the way of efficient instruction. Out of 892 schools and classes, about 573 schools and classes were required to be run in two Sessions and more than two sessions for want of sufficient accommodation and 4,669 class-rooms were used twice.

The number of Municipal owned buildings at the beginning of the year in the City was 154. 9 schools were built during the year under report. The total number of school buildings in the Suburbs and the Extended Suburbs at the end of the year was 59 and 33, respectively.

419 schools (including classes) were housed in Municipal owned school buildings, and 439 schools including classes were housed in rented buildings. 34 schools were housed in rent free buildings. Due to yearly increase in the number of pupils, it has become practically impossible to accommodate them in the existing accommodation. A steady and planned progress towards acquisition of private plots and structures, etc., wherever possible and construction of school buildings is therefore being made.

The Rahimtoola Currimbhoy Urdu Training Institute for Women continued to function as usual with one division of 49 pupils in the First Year and 149 in three Divisions in the Second Year were under training. All the 49 Trainees of the I Year Class were promoted to the II Year Class. Out of 149 Trainees of the II Year Class, 141 were declared successful at the Primary Teachers' Certificate Examination.

The Municipal Urdu Teachers' Training Class started in July 1958, continued to function during the year under report. All the 31 trainees in the Class (one year's course) appeared for the P. T. C. Examination and 30 were declared successful the result being 97 per cent.

The Corporation continued to impart vocational education. The Director of Technical Education has agreed to grant recognition to the Municipal Printing Class at Foras Road, provided arrangements are made in the class for teaching III Year Typography Course. There were 23 Vocational Classes in 11 Vocational Schools.

The total number of Aided Schools in Greater Bombay during the year was 215 out of which 128 were in the City, 53 in the Suburbs and 34 in the Extended Suburbs as against 356 in the previous year. The total number of teachers in Aided Schools was 1,846 (1,613 ordinary and 233 special) imparting education to 55,112 pupils. The total number of Recognised Schools not receiving Grant-in-Aid was 305 (67 in the City, 203 in the Suburbs and 35 in Extended Suburbs) with 3,054 teachers imparting education to 90,717 (57,584 in the City, 23,908 in Suburbs and 9,225 in Extended Suburbs) pupils.

As the revised Grant-in-Aid Code came into force from 1st April 1964, the amounts of grants payable to private Primary Schools for the year under report were being assessed.

The average cost per pupil in the Municipal Schools calculated on the basis of the average number of pupils on rolls as on 31st March 1965 for City, Suburbs and Extended Suburbs was Rs. 130.03.

The total expenditure for the year amounted to Rs. 4,51,93,089 which was met from Municipal contribution (Rs. 2,87,59,244), Government Grant (Rs. 68,09,717), Education Cess (Rs. 88,59,785) and miscellaneous receipts (Rs. 10,93,605).

Research Unit.

46. A random stratified sample of 16 Schools was selected for a longitudinal study of wastage and stagnation in Municipal Schools. A study designed to raise the Standard of Schools achievements at different levels was also undertaken. Likewise a study designed to minimise the extent of failures in Standards I, II and III by evolving more effective methods of teaching and by starting parallel classes for children who fail was undertaken. The Research Advisory Committee has approved continuation of certain projects which may go a long way in improving the standards of education, handwriting, etc.

In all 85,417 pupils in the City, 23,512 in the Suburbs and 9,175 in the Extended Suburbs were medically examined out of whom 72,993 in the City, 19,089 in the Suburbs and 7,678 in the Extended Suburbs were found to be suffering from one defect or the other. Amongst the common defects noticed, general debility, dental lymphatic glands throat were most predominant.

The Standing Committee reiterate that the question of constructing new School Buildings should be given top priority so as to ensure qualitative upgrading of primary education in Municipal Schools.

Labour Department.

47. During the year 22 Recognised Trade Unions represented Municipal employees. With a view to promote cordial relations between the staff and the Administration, the total number of Joint Councils representing labour staff continued to function was 22, their scope

being wide enough to permit discussions on various matters relating to grievances and conditions of service of the staff. Peshi Committees for enquiring into the mis-conduct of employees were also formed. A four-stage grievance procedure has also been introduced in all Departments for redressal of the employees' grievances.

The Department dealt with 4,465 complaints (including Suburbs) as against 4,617 in the previous year, regarding service conditions, recruitment, promotions, transfers, etc. Of these complaints 3,568 were redressed, 782 were found not genuine cases and 115 cases were pending at the close of the year.

The recreational, educational, hygienic, cultural and social activities, indoor as well as out-door, organized by the Welfare Branch of the Department for the benefit of Municipal workers and their dependents were continued, vigorously at 31 Labour Welfare Centres. The average daily attendance of adults and children at the different Welfare Centres was 2,244 and 1,926, respectively, as against 1,700 and 1,645 during the preceding year. The maternity unit attached to the Chembur Welfare Centre continued to do its useful work under a qualified doctor. 4,558 cases were treated at the Unit during the year under report as against 1,772 in the preceding year.

Under the scheme for granting scholarships to the children of Municipal employees, 386 applications were received out of which 210 eligible applicants for secondary education and 124 for higher education were awarded scholarships at a total cost of about Rs. 15,000. 526 applications were received for medical assistance and help aggregating to Rs. 19,980 was given in 436 deserving cases. The total strength in Scout and Guide Sections was 3,166 as against 2,378 during the preceding year.

Sixty-one disputes were referred to the Commissioner of Labour, Conciliation Officers, Industrial Tribunal and 1st Labour Court.

A nursery school was opened at Bapty Road Chawls. At present 45 children between the age of 2½ to 5 years are taking advantage of the school. The children are given free snacks daily.

Publicity Department.

48. This Department effected general publicity about the activities and services rendered by different Departments. The Department also worked as a "clearing house" in respect of criticisms and suggestions appearing in local newspapers.

Besides participation in various important celebrations, such as, World Health Day, National Cleanliness Day, etc., and undertaking printing of a Civic Guide-cum-Diary, 1965, two brochures, viz., (1) outlines of the Draft Development Plan for Greater Bombay and (2) Broad outlines of Bombay's Traffic and Travel City, were brought out.

The Standing Committee feel that more efforts have to be made to make the citizens more civic-conscious and to convey correct information to them about civic affairs.

M. G. M. O. Swimming Pool.

49. During the year under report the working and progress of the Mahatma Gandhi Memorial Olympic Swimming Pool at Shivaji Park was satisfactory.

Facilities to polio-crippled children were given to 11 children free of charge.

The Pool premises were given for use, free of charge to the Maharashtra State Aquatic Association and the University of Bombay, for holding their competitions. The total reservation hours of the Pool by private parties were 331 which brought a revenue of Rs. 8,210. As many as 33,507 casual swimmers including labourers and factory workers availed themselves of the facilities of swimming. Reservation of the Pool at a concessional rate of Rs. 100 per month for two hours a week was also allowed as usual to 6 Educational Institutions. Eight members of the Pool were included in the Maharashtra State Aquatic team for participating in the 21st National Swimming Championship held at Jaipur in September 1964.

6,636 new Members joined the Pool during the year under report. 3,360 beginners were trained during the year. An amount of Rs. 2,11,500 was collected by way of fees as against Rs. 1,75,000, during the previous year.

Administrative Officer (Enquiries) Department.

50. The Department functions in three Sections, viz., (1) Enquiries, (2) Stock Verification and (3) Security Force.

During the year the Enquiries Section dealt with 1,288 cases which included cases of alleged acceptance of illegal gratification, misconduct, misbehaviour, theft of Municipal property, breaches of provisions of Municipal Bye-laws, infringement of licence conditions use of municipal vehicles by unauthorised persons, sub-letting of rooms, etc. In 198 cases punishments varying from dismissal, removal from service to censures and warnings were meted out. 321 cases were filed as the allegations were found to be either false, malicious or too vague. In 267 cases, Departments concerned were asked to take necessary remedial actions. In 502 cases enquiries were in progress at the end of the year.

The distribution of relief from the Mayor's Fund to the families affected by fire, house collapses and other natural calamities was also carried out by the Department.

During the year under review, the process of integration of all Watch and Ward Staff into Bombay Municipal Security Force was completed. Important cases of pilferages were brought to light from different installations especially from the larger hospitals of the Corporation.

The Bombay Civic Journal.

51. As usual twelve monthly issues were published. A special number, profusely illustrated, was also taken out to mark the occasion of the completion of 10 years of the Journal's publication.

The Standing Committee feel that there is enough scope for the qualitative and the quantitative improvement of the Journal.

Organisation and Methods Division.

52. The Organization and Methods Division works as an Advisory Unit of the Municipal Commissioner's Office. The work done by this Department includes inter alia codification of Municipal Commissioner's orders and circulars of standing nature, standardisation of Forms, etc.

Public Health.

53. *Population Census.*—The mid-year estimated population of Greater Bombay was 45,38,000.

Births and birth rate.—The total number of live births recorded in Greater Bombay during the year was 1,32,592 as against 1,22,305 in the previous year. The birth rate was 29.2 per 1,000 of the mid-year estimated population as against 27.6 in the preceding year.

Deaths and death rate.—The total number of deaths registered from all causes during the year was 45,161 as against 40,650 in 1963 being 5,000 more than the mean mortality of the preceding 5 years and the death rate being 9.9. Of 45,161 deaths, 26,149 deaths were among males and 19,012 among females. The excess of deaths amongst males may be ascribed to the slight preponderance of males. The death rate among females was however, actually higher than among males, the male death rate being 9.5 and the female death rate 10.4 against 8.6 and 9.6 respectively, in 1963. Diseases of the respiratory system claimed the highest number of deaths in the past with death rate of 1.67 per 1,000. The causes coming next on the list for the year were congenital malformation and diseases of early infancy (1.35) tuberculosis (0.86), diarrhoea Enteric fever and dysentery (0.67).

Deaths among infants under one year of age numbered 11,355. The infant mortality rate for the year was 85.6 which was 678 more than in the preceding year and 869 more than the annual average of the previous quinquennium (1959-63) per 1,000 live births as against 80.9 in 1963.

The Standing Committee are constrained to note that for the last several years, diseases of the respiratory system are responsible for the highest death rate every year and that a large proportion of deaths occur among children and infants under five years of age. The Committee desire that concentrated efforts should be made by the authorities in charge of Medical Relief to improve the situation by taking all possible remedial measures.

Maternity and Child Welfare.—During the year under report, services were rendered through 17 Municipal Maternity Homes and 28 Maternity and Child Welfare Centres. The number of deliveries conducted in these Homes was 36,512 during the year. The average stay of mothers at the Maternity Homes was 5 days.

Advice and instruction in spacing births were given by qualified lady doctors to married women at the Family Planning Clinics. Health Visitors assigned for this work paid domiciliary visits for follow-up work and propaganda.

Communicable Diseases.—The total number of cases of infectious diseases reported during the year was 6,249 as against 5,229 in the preceding year. Small-pox caused 562 attacks and 211 deaths. Cholera caused 52 attacks. Influenza caused 18 deaths. Enteric Fever caused 570 attacks. Diphtheria caused 2,221 attacks and 114 deaths. Malaria caused 1 death. Tuberculosis took a toll of 3,952 lives and the death rate of Tuberculosis was 0.9 per 1,000 of mid-year estimated.

There was a sudden and heavy outbreak of Gastro-enteritis during May and June 1964. The total admission being 6,116 with daily average number of patients 449. The fatality rate in the total admission was 3.1 percent.

Municipal Group of Tuberculosis Hospital at Sewri has an accommodation for 760 in-patients, besides 200 beds are reserved at the Sarvodaya Hospital. The advance cases of T.B. are isolated at the 88 bedded Daftary Municipal Wards at Dadar.

During the year 24,17,123 persons were inoculated against Cholera and 2,36,260 persons were inoculated with T.A. B. Vaccine.

The Standing Committee view with concern the existence of different kinds of diseases and stress that the precautionary measures, such as inoculations, vaccinations, isolation etc., is continued with full vigour, the Greater Bombay will, in the near future minimise this evil, if not eradicate it. So far as Tuberculosis is concerned there is not much improvement although B.C.G., vaccination campaign is pursued vigorously. The Standing Committee, therefore, feel that medical authorities should investigate this problem with a view to find other remedial measures to meet the growing menace of this dreaded disease to the citizens of this City.

Dispensaries.

54. The number of new cases treated at the 58 dispensaries and 9 mobile dispensaries was 15,94,175 (8,08,975 males and 7,85,200 females) as against 14,86,722 in the year 1963. In addition to the above dispensary work, women and children's clinics were conducted by three part-time lady doctors at six Municipal dispensaries for two hours, thrice a week. The number of new cases treated at these dispensaries was 3,274 (2,959 women and 315 children as against 4,068 in the previous year. The total attendance was 25,540. These figures include the visits of lady doctors to patients at their homes. At 28 Maternity and Child Welfare Clinics, 84,721 new cases (67,243 women and 17,478 children) were treated. The total attendance was 2,70,288.

The Municipal Eye Dispensary and Hospital at Kamathipura was attended by two Honorary Ophthalmic Surgeons by turns throughout the year. The Hospital has an accommodation for 20 beds each for males and females with an operation theatre and a full-time resident Nurse. The total attendance of patients was 72,127 as against 76,626 in the previous year. The total number of new cases treated was 22,510 as against 22,102 in the previous year. The number of indoor patients among the new cases treated and the total attendance of indoor patients were 961 and 11,986 respectively.

Leprosy.—The control of Leprosy in the City was exercised as before through the Acworth Leprosy Hospital, Wadala, with an accommodation of 500 beds. In addition to this the Institution conducts a well-equipped out-patients' clinic the entire cost of which is borne by the Corporation. The Corporation also bears the cost on account of 48 beds for the voluntary patients and 120-130 beds for the Bombay resident patients. Besides, the payment of cost of Domiciliary Services and Rs. 10,000 for rendering Sulphone treatment, the Corporation pays one third of the recurring expenditure of Greater Bombay Leprosy Control Scheme activities as also the entire cost of Capital Works.

The average daily attendance of patients was 183.6 and the total number of new cases treated at the Acworth Leprosy clinic was 3,494 and the average daily attendance of patients was 257.25 and the total number of new cases treated at the Greater Bombay Leprosy Control Scheme was 1,489.

Venereal Diseases.

55. For combating Venereal Diseases free medical facilities, both preventive and curative, were continued as in the preceding year. During the year 21,110 (19,135 males and 1,979 females) cases were treated for Venereal and 1,559 (726 males and 833 females) in non-Venereal cases were also treated.

School Health Work.

56. During the year, out of about 3,10,165 municipal school children in the City, 99,755 children were found to be defective. 868 cases with Minor ailments among the children were treated in the municipal dispensaries. Cases with major ailments were treated at the School Clinic at the K.E.M. Hospital.

1,21,869 children from Municipal Schools were inoculated against typhoid and 36,532 children were given combined vaccine of T.B. and Anti-Cholera and Small-pox.

Kasturba Hospital for Infectious Diseases, Arthur Road.

57. Except Tuberculosis and Leprosy, patients suffering from other infectious diseases are admitted to the Hospital. The total number of patients admitted during the year was 22,348 as against 17,198 in the preceding year.

There were as many as 2,595 cases of Diptheria out of which 97 proved fatal, showing the fatality rate of 3.7 per cent. The cases were admitted predominantly from Parel, Lalbaug, Byculla and Girgaum localities.

Small-pox was sporadic during the year. 11,85,109 persons were vaccinated.

The total expenditure of the Hospital during the year was Rs. 21,40,499 as against Rs. 16,89,066 in the preceding year.

Health Propaganda.

58. The Health Propaganda and Education was carried out through the Publicity Department.

The Water Sampling Programme was continued as usual and samples were collected from all the wards.

Audit.

59. This year also the Municipal Chief Auditor's Report has not been included in the Municipal Commissioner's Administration Report, as required by Section 137(4) of the Bombay Municipal Corporation Act.

The Standing Committee are of the considered opinion that every effort must be made by the respective Heads of the Departments to comply with the statutory provisions. The Municipal Chief Auditor's Report would have been of much help to the Standing Committee in their scrutiny of the various facts and figures incorporated in the Report of the Municipal Commissioner. The Report, however, will be forwarded to the Corporation separately when received.

Acknowledgement.

60. In conclusion, the Standing Committee desire to record their appreciation of the very valuable services rendered by Shri S. E. Sukthanker who held the office of the Municipal Commissioner throughout the year whose administrative abilities and financial acumen were of great help to the Committee.

Municipal Corporation Office, }
Bombay, 10th December 1965. }

JIVRAJ B. SHAH,
Chairman,
Standing Committee.