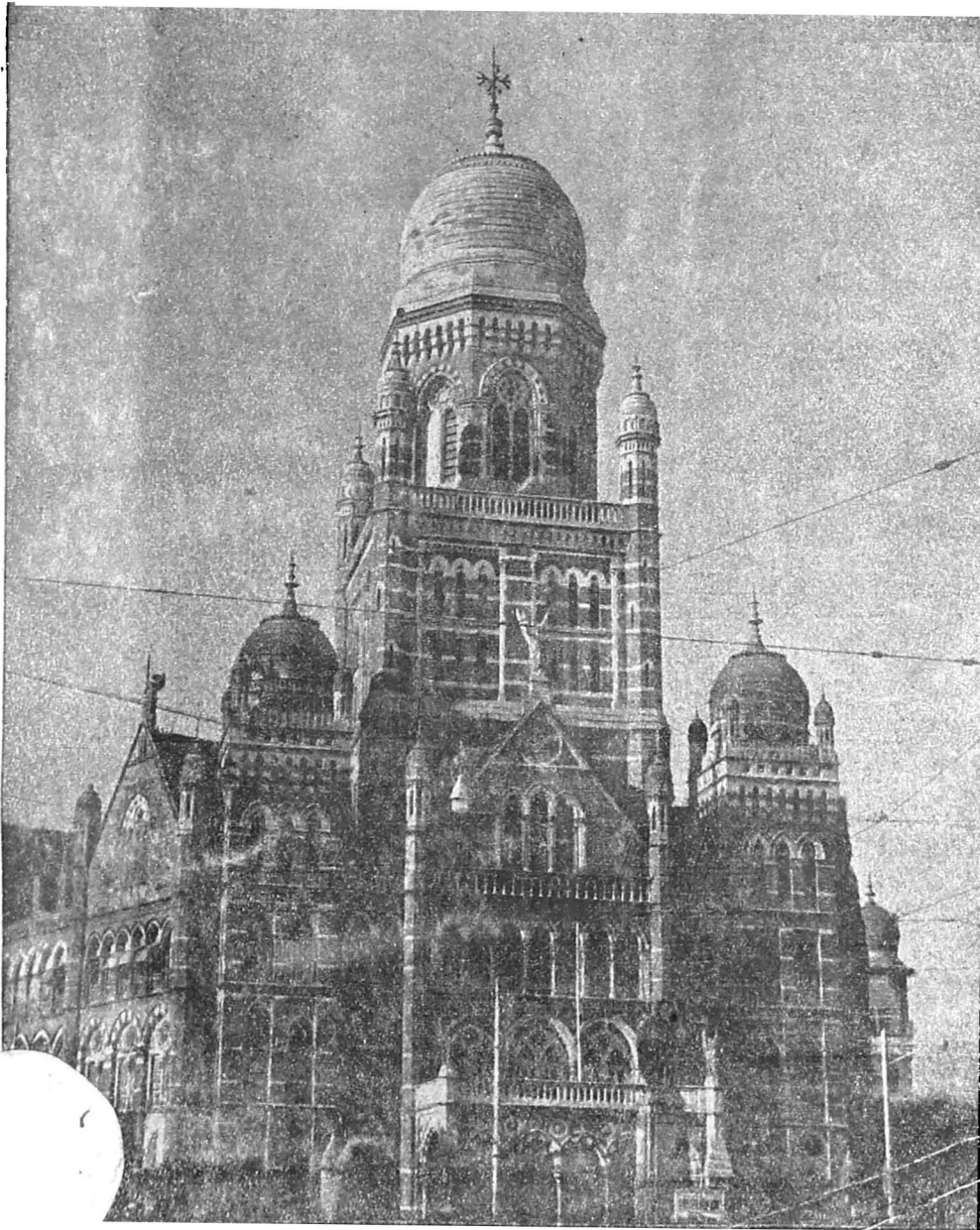


**ADMINISTRATION REPORT**  
**OF THE**  
**MUNICIPAL COMMISSIONER**  
**FOR**  
**GREATER BOMBAY**  
**(SUBURBS & EXTENDED SUBURES)**  
**FOR THE YEAR**  
**1959-60**



BOMBAY  
PRINTED AT THE MUNICIPAL PRINTING PRESS  
1960

**ADMINISTRATION REPORT  
OF THE  
MUNICIPAL COMMISSIONER  
FOR  
GREATER BOMBAY  
(SUBURBS & EXTENDED SUBURBS)  
FOR THE YEAR  
1959-60**

BOMBAY  
PRINTED AT THE MUNICIPAL PRINTING PRESS  
1960

# CONTENTS

## Part I

### (Suburbs and Extended Suburbs)

	PAGES
1. MUNICIPAL COMMISSIONER'S NOTE	... 1-19
2. REPORT OF THE DY. MUNICIPAL COMMISSIONER	.. 21
3. FINANCIAL—	
Report of the Assistant Accountant (Suburbs) with Appendices	... 23-116
(i) Budget 'D'	... 23-74
(ii) Budget 'F'	... 75-116
4. REVENUE—	
Report of the Deputy Assessor and Collector (Suburbs) of :—	... 117-127
(i) Suburbs	... 117-121
(ii) Extended Suburbs	... 123-127
5. PUBLIC WORKS—	129-163
(i) Report of the Assistant Engineer (Suburbs)	... 129-154
(ii) Report of the Senior Assistant Engineer (Extended Suburbs)	... 155-163
6. WATER WORKS—	
(i) Report of the Assistant Engineer (West)	} ... 165-171
(ii) Report of the Assistant Engineer (East)	
(iii) Report of the Assistant Engineer (Extended Suburbs)	... 173-177
7. LICENCES, SHOPS AND ESTABLISHMENT—	
Report of the Assistant Superintendent of Licences, Shops and Establishments	... 179-184
(i) Suburbs	... 179-181
(ii) Extended Suburbs	... 183-184
8. Municipal Library (Sub. and Ext. Sub.)	... 185-186
9. MARKETS AND SLAUGHTER HOUSES—	
Report of the Assistant Superintendent of Markets	... 187-192
(i) Suburbs	.. 187-190
(ii) Extended Suburbs	.. 191-192
10. EDUCATION—	
Report of the Education Officer	... 193-196
(i) Suburbs	.. 193-194
(ii) Extended Suburbs	.. 195-196
11. SUBURBAN GARDENS—	
Report of the Superintendent of Gardens (Suburbs and Extended Suburbs)	.. 197-199
12. Public Relations Department (Suburbs and Extended Suburbs)	... 201
13. INDEX	..
<h2>Part II</h2>	
14. PUBLIC HEALTH—	
Report of the Assistant Health Officer	... 1-79
(i) Suburbs	.. 1-43
(ii) Extended Suburbs	... 45-79
15. Index	... 44,80

## PART II

INDEX.  
(EXTENDED SUBURBS)

	PAGES
(1) Appendices—Supplementary reports and Tables for Hospitals and Dispensaries	...48, 78, 50
(2) Area and Population	45
(3) Birth and Birth-rate	45
(4) Births by months	49
(5) Cerebro-spinal meningitis	46
(6) Cholera	46
(7) Cemeteries	46
(8) Deaths and death-rate	45
(9) Deaths by months	49
(10) Diphtheria	46
(11) Disinfection	46
(12) Dispensaries	46
(13) Enteric fever	46
(14) Epidemic and other diseases	46
(15) Food sanitation	47
(16) Hospitals	78
(17) Influenza	46
(18) Leprosy	46
(19) Malaria	46
(20) Maternity and Child Welfare-services	46
(21) Maternity Services	78
(22) Meteorological Data	54
(23) Notification of Infectious diseases	46
(24) Plague	46
(25) Poliomyelitis	46
(26) Prosecutions	55
(27) Review of the year	49
(28) Small-pox	46
(29) Tuberculosis	46
(30) Vaccination	48
(31) Venereal Disease	46