

STANDARD DESIGN OF TIMBER
for
SEVEN METRES SPAN

STANDARD DESIGN OF TIMBER ROOF TRUSS FOR SEVEN METRES SPAN

Light, Medium & Heavy weight roofing.

(A T.E. Handbook Series)

DESIGN SHEET NO. 18

BY

N. J. MASANI, B.E., M.I.E.

Director of Forest Products Research

&

Officer-in-Charge, T.E. Branch

R. K. GUPTA

&

R. C. KUKRETI

Timber Engineering Branch,
Forest Research Institute, Dehra Dun



PUBLISHED BY THE MANAGER OF PUBLICATIONS, DELHI
PRINTED AT THE F.R.I. PRESS, PUBLICITY AND LIAISON BRANCH,
FOREST RESEARCH INSTITUTE AND COLLEGES, DEHRA DUN

1969

Price: Inland Rs. 1.45 Paise. Foreign 3 sh. 5 d. or 53 cents.

MATERIALS
Heavy Weight Roof)

Table 6

Timber for purlins, rafters, cleats etc. per bay

Sl. No.	Description	Total Nos.	Dimensions in cm.		
			Length	Breadth	D or T
1.	Solid purlins	5×2	280	5	12
2.	Timber cleats	5×2	19	10	16
3.	Timber rafter placed at 0.833 metre	6×2	210	5	8
4.	Timber reapers	35×2×3	100	5	2.5
		Total	= 0.4567 cu. m. (16.2 cft.)		

Continuous jointed purlins may be used of same section if long lengths are not available easily and economically. Length of each piece will be 138 cm. Lengthening joints will be provided with 1" thick timber plates as shown in the drawing.

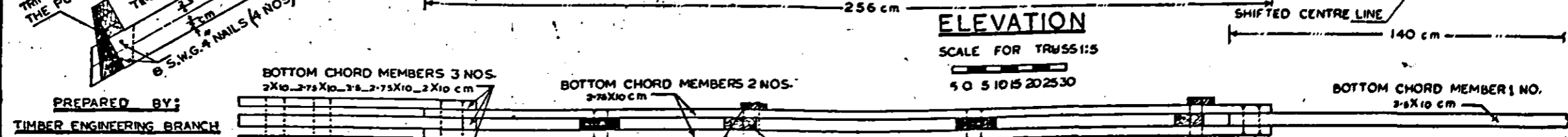
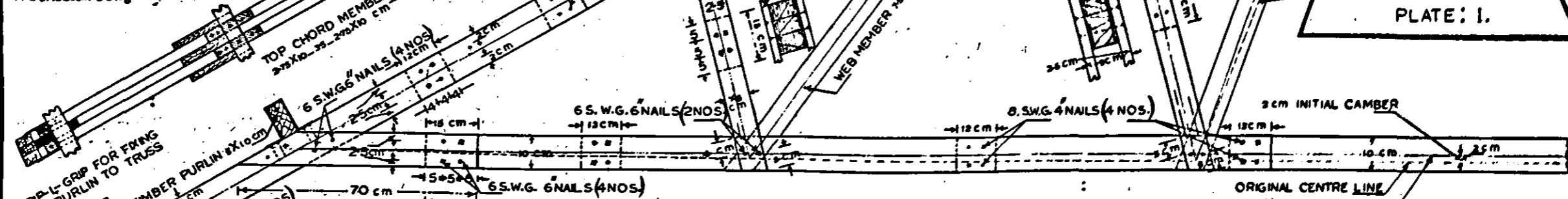
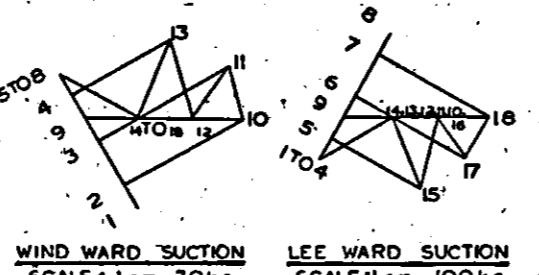
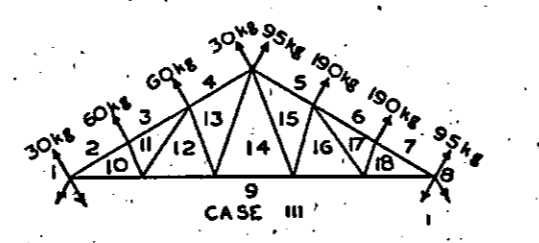
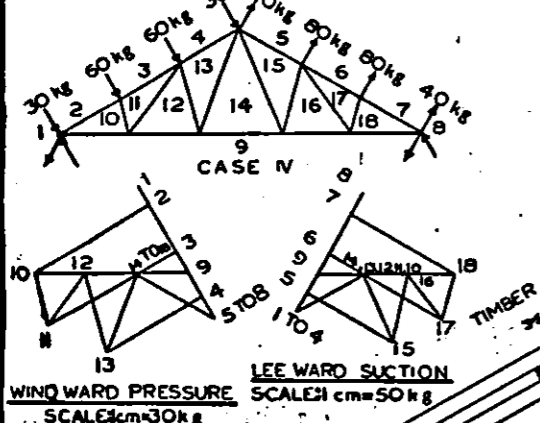
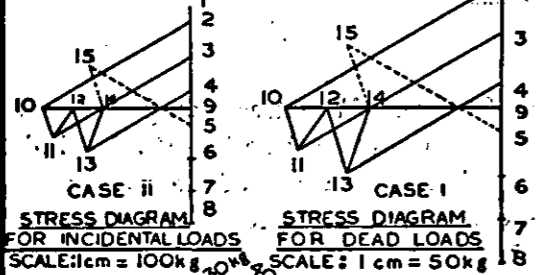
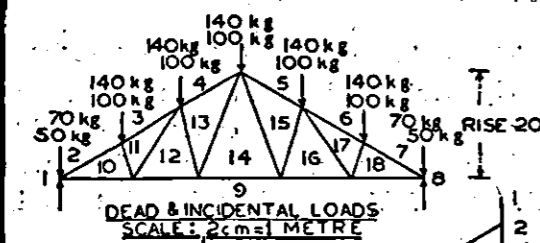
Nails

Sl. No	Description	Nos.
1.	6 S. W. G. 6" long nails	106
2.	6 S. W. G. 5" long nails	10
3.	8 S. W. G. 4" long nails	72
Add 10% extra nails, giving due consideration for breakage etc.		Total = 3.5 kg.

Hardware for fixing truss

1.	3/8" dia. 6" long M. S. Bolt	2 Nos.
2.	1/4" thick M. S. Flat 2" × 18" long	4 Nos.
		Total = 3 kg.

SEVEN METRE SPAN TIMBER TRUSS FOR LIGHT WEIGHT ROOF



PREPARED BY:
TIMBER ENGINEERING BRANCH
FOREST RESEARCH INSTITUTE
AND COLLEGES
DEHRADUN

T.E. DESIGN SHEET NO. 18
PLATE: I.

DRAWN BY: RAMESH