

MINES DEPARTMENT.

---

---

**REGULATIONS AND ORDERS**  
**RELATING TO MINES UNDER THE COAL**  
**MINES ACT, 1911.**

---

**1926 EDITION.**

(Including Orders up to 31st January, 1927.)

---

---

LONDON:

PUBLISHED BY HIS MAJESTY'S STATIONERY OFFICE.

To be purchased directly from H.M. STATIONERY OFFICE at the following addresses:  
Astrakhan House, Kingsway, London, W.C.2; 120, George Street, Edinburgh;  
York Street, Manchester; 1, St. Andrew's Crescent, Cardiff;  
15, Donegall Square West, Belfast;  
or through any Bookseller.

1927.

*Price 1s. 0d. Net.*

# EXPLOSIVES

for

**COAL GETTING & RIPPING**

## CLEVELAND POWDER

Permitted



Explosive

Does not freeze and gives off no injurious fumes.  
Charge Limit : 18 ozs.

## BARWICK POWDER

A powerful Explosive, equal to Gelignite, but containing no Nitro-glycerine. Absolutely impervious to water, and does not freeze.

*Manufactured by*

**SABULITE** (Great Britain) **LIMITED,**

639 643, Salisbury House,

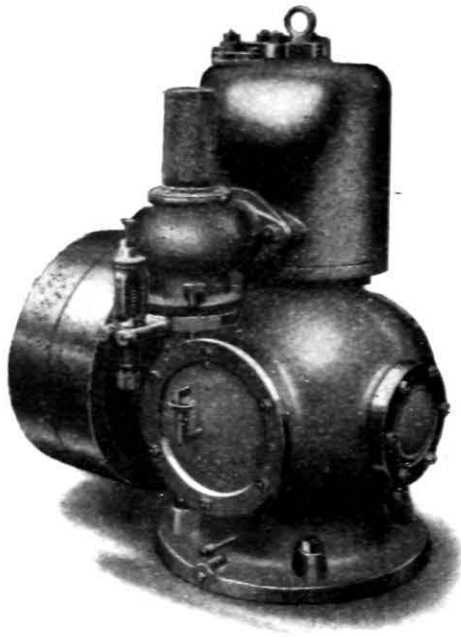
**LONDON WALL, : : LONDON, E.C. 2.**

AND

**NORTHERN SABULITE EXPLOSIVES CO., LTD.,**

129, Victoria Road, Darlington.

# BRITISH PLANT FOR BRITISH COLLIERIES.



## “HARDY” PATENT AIR COMPRESSORS.

Combine high volumetric efficiency with wonderful simplicity, silent running and freedom from repair.

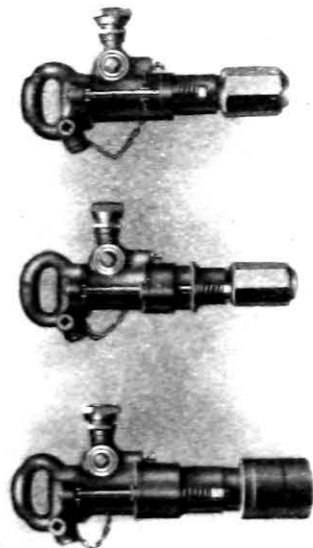
SPLASH LUBRICATION.

UNIQUE VALVE ARRANGEMENTS.

“HARDY” CONSTRUCTION THROUGHOUT.

## “HARDY-SIMPLEX” HAMMER DRILLS

are recognised as the best machines in the market, made in various sizes to suit all requirements (from steel forgings throughout). They stand supreme as fast boring machines of superb quality, finish and durability.



*Sole Makers :*

**THE HARDY PATENT PICK CO., LTD.,  
SHEFFIELD, ENGLAND.**

# ALLEN WEST & CO., LTD.

BRIGHTON



ENGLAND



**Oil-immersed  
Flame-proof Drum Type Reversing  
HAULAGE CONTROLLER**

for use with

**3-Phase Slip-ring Induction Motors.**

Sheffield University Test Certificates are issued for  
these Controllers.

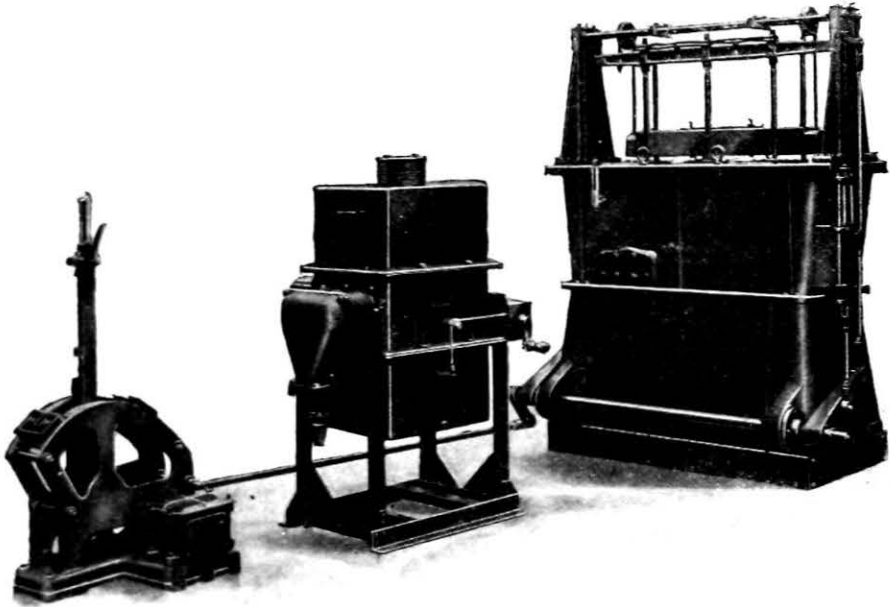
**Max. Capacity, 300 H.P., 3,300 Volts.**

# ALLEN WEST & CO., LTD.

BRIGHTON



ENGLAND



500 H.P. 3,300 Volt.

## Liquid Type WINDER CONTROLLER comprising

REGULATOR with Automatic Acceleration,  
Oil-immersed Contactor-operated REVERSER  
and LEVER GEAR with MASTER SWITCH.

Also makers of  
Flame-proof Air-break and Oil-immersed  
DRUM CONTROLLERS and SWITCHGEAR  
for which  
Sheffield University Test Certificates  
are given.

CONTROL EQUIPMENT for Motors up to 5,000 H.P.

# STANDARDS' PISTON RINGS

ENSURE

## STEAM TIGHT CYLINDERS

The STANDARD  
Hammered Cast Iron  
Piston Rings are THE best.

Are you using them ?

They have been fitted by the leading Builders  
and Collieries for 30 years with the most successful  
results and minimum of wear on the liners.

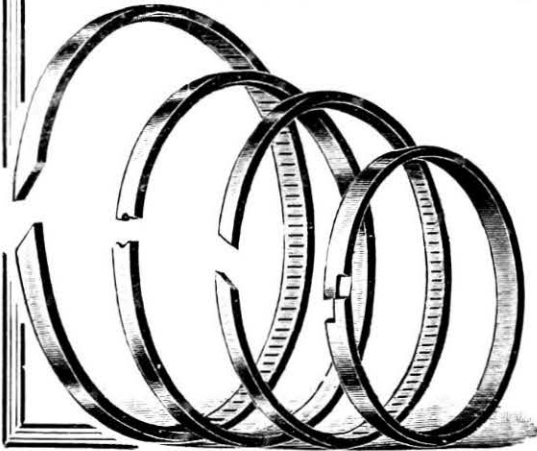
for COLLIERY  
WINDING and  
AUXILIARY  
ENGINES.

Quickest Possible  
Delivery. Lowest  
Possible Prices.

All sizes :  
2½ in. to  
72 in. diameter.

The  
STANDARD PISTON  
RING & ENGINEERING  
Co., Ltd.,  
PREMIER WORKS,  
DON ROAD,  
SHEFFIELD.

Telephone No : 2149.  
Telegrams : "Ocean. Sheffield."



*It would be a pity*  
if your Mine, up-to-date  
with latest improvements,  
were to lack adequate  
means of preservation  
should a Fire break out.

*May we send you Leaflet No. 753  
describing the world - renowned*

# “ MINIMAX ”

Chemical Hand Fire Extinguisher which, free from all  
injurious fumes, forms ideal Fire Protection for  
Collieries.

**MINIMAX, Ltd.,**

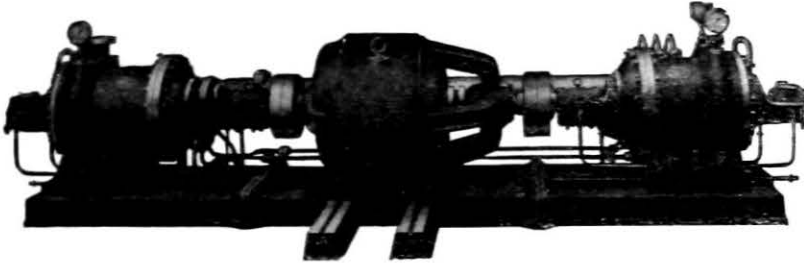
Head Office and Works : FELTHAM, MDDX.

("Minimax"—Regd. Trade Mark.)



*The Sign  
of Security.*

# High Efficiency TURBINE PUMPS FOR ALL MINING DUTIES.



Write  
for  
List No.  
1194

We specialise in Turbine Pumps for mining work and our long experience ensures the supply of suitable and reliable pumps only.

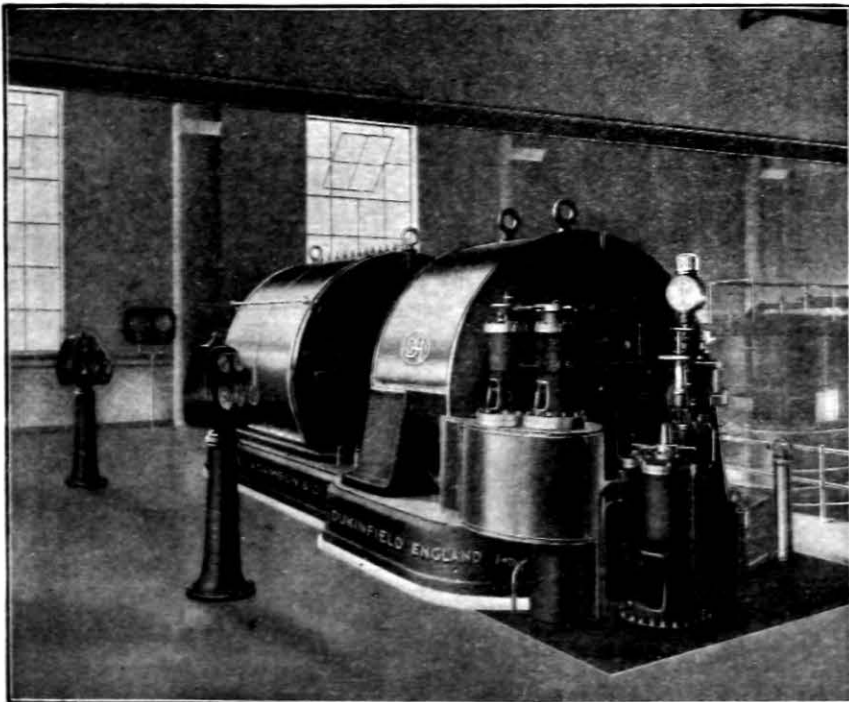


## Pulsometer Engineering Co., Ltd.

11, Tothill Street,  
LONDON, S.W.1.

Nine Elms Iron Works,  
READING.

## DANIEL ADAMSON & CO., LTD., DUKINFIELD



TURBO-COMPRESSORS, BLOWERS, CONDENSERS, ETC.

# SIEBE, GORMAN & CO., LTD.



—THE—

## “PROTO” RESCUE APPARATUS

The first apparatus to pass both the British and United States Government approval tests.

Adopted by:

All the principal Rescue Stations and affiliated Collieries throughout the country; and by many Colonial and Foreign Governments.

Also Makers of:

## SMOKE HELMETS

of all patterns, for Gob Fires and other short distance work in Collieries

OXYGEN RESUSCITATING APPARATUS  
for the apparently asphyxiated.

(OXYGEN and OXYGEN & CO<sub>2</sub> SYSTEMS)

GAS MASKS (RESPIRATORS): including the Burrell Type  
“ANTIPOY'S” SHORT DISTANCE BREATHING APPARATUS

Dr. HALDANE'S GAS ANALYSIS APPARATUS  
of various patterns.

And all other SAFETY and PROTECTIVE APPLIANCES.

“Neptune” Works & 187, Westminster Bridge Road,  
LONDON, S.E.1.

Telegrams: “SIEBE, LAMB, LONDON.”

Telephone No.: Hop 3401 (2 lines.)



## “KINGSWAY II” Miners' Electric Hand Lamp

(Approved by H.M. Home Office)

The “Kingsway” Miners Hand Lamp is designed to give adequate illumination and perfect diffusion of light rays without glare or flicker over a run of 10 hours. Eyestrain is thus eliminated and increased production made possible. Every part is soundly constructed to withstand the rough usage associated with coal getting and its adoption is a “Safety First” precaution.

Outstanding features:

- Simple yet sound construction.
- Long Life.
- Accessibility.
- Freedom from corrosion.
- Constancy of Light.
- Low cost for attention and renewals.

Extensively used in many of the largest collieries in the Kingdom.

*The G.E.C.—your guarantee*

**THE GENERAL ELECTRIC CO., LTD.,**

Head Office: Magnet House, Kingsway, London, W.C. 2.

Branches throughout Great Britain and in all the principal markets of the world.





- ① The Holman Pneumatic Coal Pick is almost entirely free from vibration.
- ② The air consumption is the lowest possible.
- ③ It is a hard-hitting, fast driving tool, capable of more work than any other of like kind, given the same working conditions.
- ④ Strict laboratory treatment of all materials ensures long and efficient performance. Stringent tests throughout manufacture ensure a perfect tool.



4  
big  
points  
about  
the  
Holman  
Coal Pick

THE Holman Pick can be used for driving headings in even the hardest stone, and can pull down more in 6 hours than the sledge, wedge and mandril method can accomplish in a week. Better and safer progress can be made than by using the ordinary percussion drill and shot firing. In every colliery where these Picks have been demonstrated machines have been purchased.

BROS. LTD.  
**Holman**

CAMBORNE, ENGLAND

London Offices :

BROAD STREET HOUSE, E.C.2

Resident Engineers in Bristol, Cardiff, Darlington,  
Glasgow, Sheffield, etc., etc.

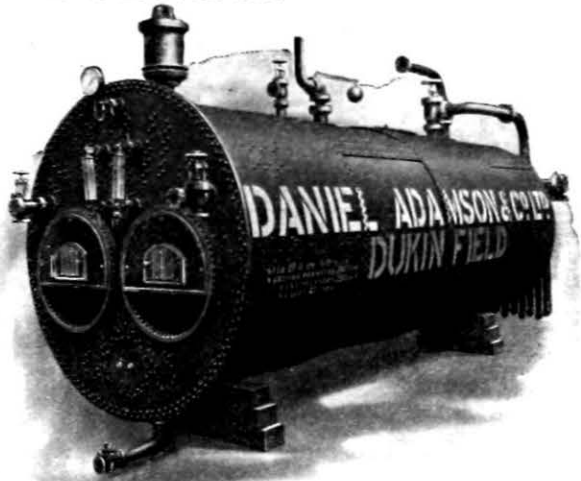
*The  
British  
Firm  
for  
Mining  
Plant*



"IT PAYS TO BUY THE BEST"

# 260 LBS. WORKING PRESSURE

If you require Boilers to work at pressures approaching above, our experience as Pioneers in Boiler making is at your service.



LANCASHIRE BOILER, 30 ft. x 9 ft. 0 in.

"RECOVERY" & SUPER-LANCASHIRE BOILERS  
OVER 75 YEARS' EXPERIENCE

**DANIEL ADAMSON & CO., LTD.,**  
ENGINEERING WORKS,  
**DUKINFIELD, MANCHESTER.**

Commercial Engineering Co.,  
8 to 12, Commercial Street,  
Birmingham.

Telephone—MIDLAND 555.

Purchasers of the business of  
**JOSEPH COOKE & SON.**



No. 19 J.C.B.

—○—

MANUFACTURERS  
OF EVERY DESCRIPTION OF  
OIL SAFETY LAMPS,  
FITTINGS, GLASSES,  
GAUZES, WASHERS,  
ETC., ETC.

—○—



No. 19F J.C.B.

— APPROVED MINERS' LAMPS. —

# PITHEAD BATHS

OUR PLANT IS INSTALLED AT THE  
FOLLOWING COLLIERIES:

BULLCROFT  
NUNNERY  
HANDSWORTH  
TREETON  
BARNSELY MAIN  
TINSLEY PARK  
ROB ROYD  
WATH MAIN  
BARNBRO'



CORTON WOOD  
MALTBY  
TAMWORTH  
LYNTON  
BLIDWORTH  
BOLDON  
ORGREAVE  
WALESWOOD

PUT YOUR WORK INTO EXPERIENCED HANDS

## GUMMERS LTD.

EFFINGHAM VALVE WORKS,  
ROTHERHAM

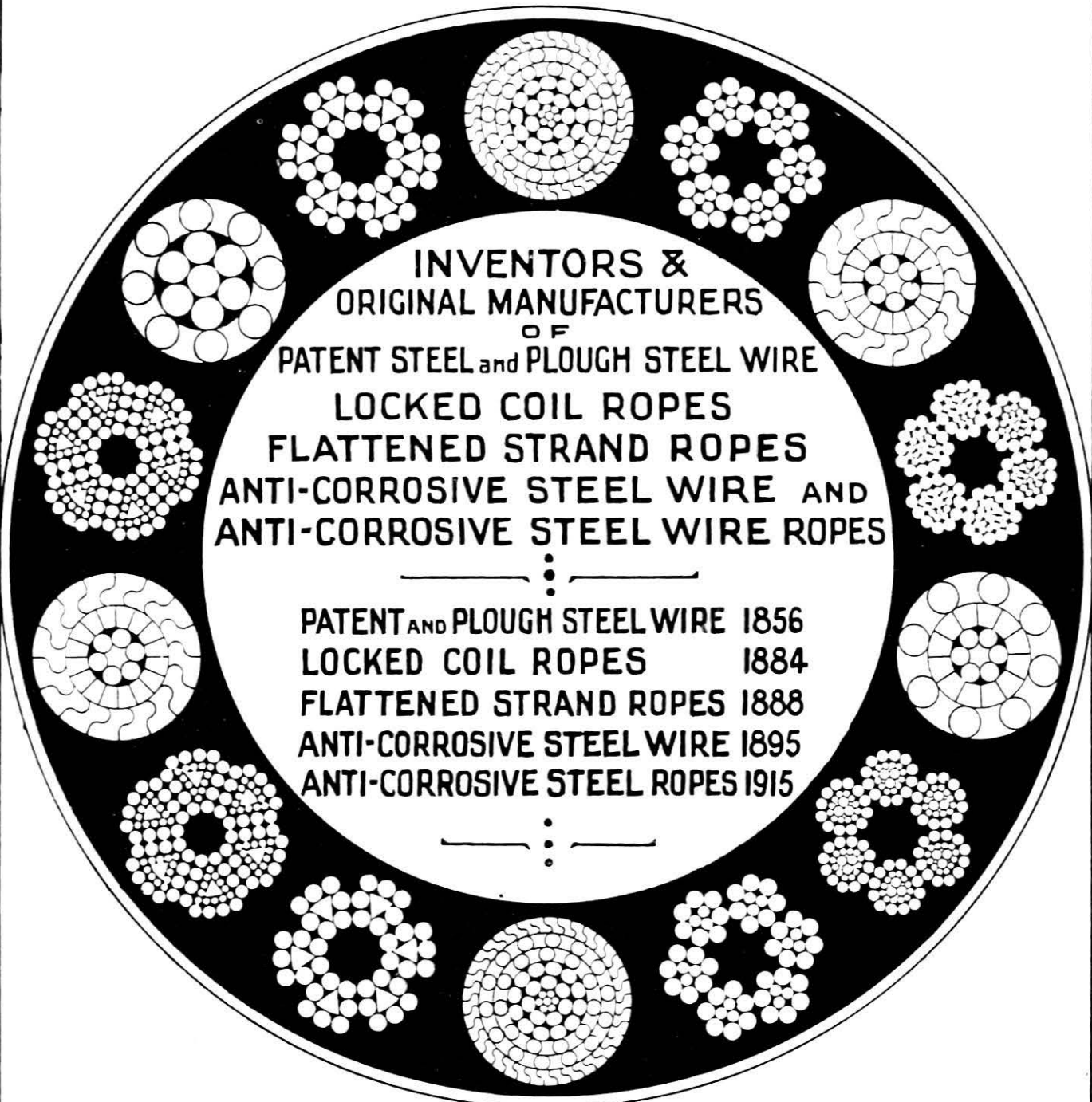
Phone  
E. 578 and 579  
ROTHERHAM. LONDON OFFICE: 31-37 WYBERT ST., N.W.1

Grams.:  
GUMMER,  
ROTHERHAM.

# LATCH & BATCHELOR LTD

(Amalgamated with Webster & Horsfall.)

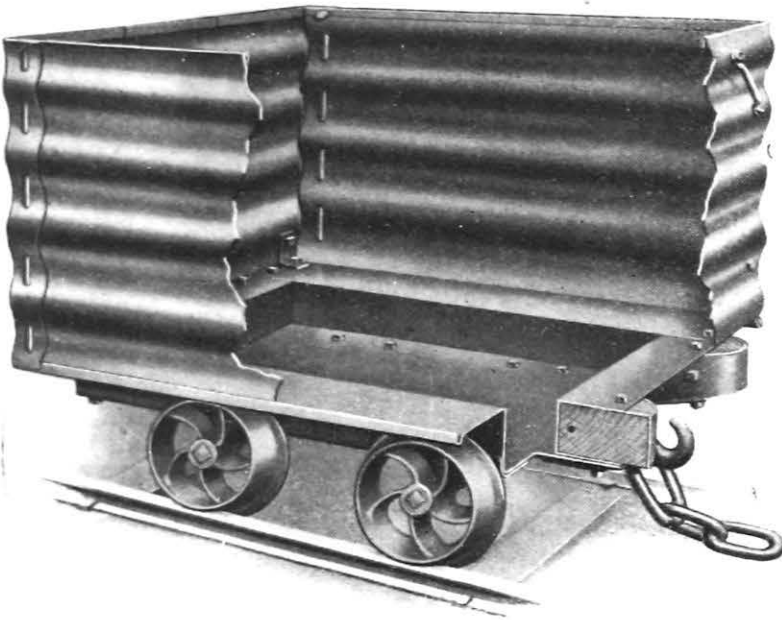
(Established 1730.)



INVENTORS &  
ORIGINAL MANUFACTURERS  
OF  
PATENT STEEL AND PLOUGH STEEL WIRE  
LOCKED COIL ROPES  
FLATTENED STRAND ROPES  
ANTI-CORROSIVE STEEL WIRE AND  
ANTI-CORROSIVE STEEL WIRE ROPES

— — — — —  
: — — — — —  
PATENT AND PLOUGH STEEL WIRE 1856  
LOCKED COIL ROPES 1884  
FLATTENED STRAND ROPES 1888  
ANTI-CORROSIVE STEEL WIRE 1895  
ANTI-CORROSIVE STEEL ROPES 1915  
— — — — —  
: — — — — —

**WIRE & WIRE ROPE MANUFACTURERS**  
**HAY MILLS,**  
**BIRMINGHAM**



WELL-  
BOTTOM  
TYPE

—  
LARGER  
OUTPUT and  
GREATER  
EFFICIENCY

—  
10 TUBS  
DO THE  
WORK OF 12

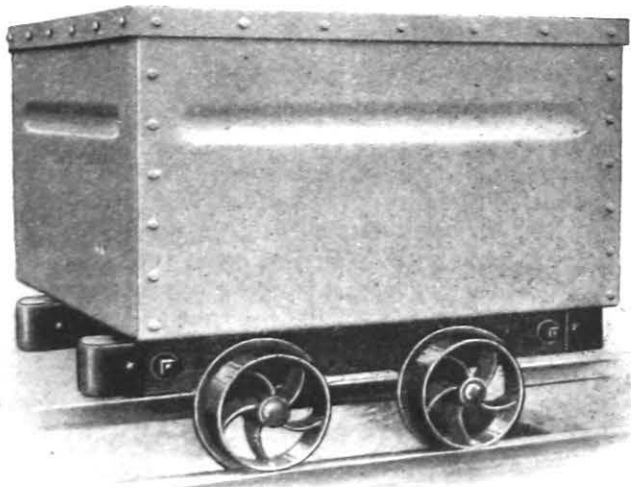
—  
THE  
WOODEN  
UNDER-  
FRAME  
ELIMINATED

CORRUGATED STEEL

WE ARE PIT TUB SPECIALISTS AND  
CAN SUPPLY TO ANY SPECIFICATION.

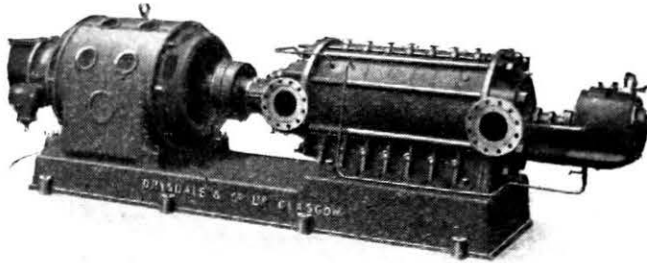
FLAT  
RIVETTED  
STEEL  
WITH  
ONLY ONE  
CORRUGA-  
TION  
TO EACH  
PLATE.

—  
PLEASE SEND  
US  
YOUR  
ENQUIRIES.



**ROBERT MORRIS LTD.,**  
**FARNWORTH, BOLTON, LANCS.**

# DRYSDALE Turbine Pumps



Electrically driven Turbine Pump to deliver  
300 gals. per minute, 900 ft. head, at 1,450  
revs. per minute.

FOR  
PUMPING MINES  
AND  
SINKING MINE  
SHAFTS,  
ETC., ETC.

**DRYSDALE & CO. LTD.**  
YOKER, GLASGOW

## The "MAXILUX"

(MOST LIGHT)

The Latest Improvement in Miners' Lamps.

Only Two Parts. Only Two Pillars. No Loose or Leaky Cells. No Fragile Parts. Smallest Upkeep Costs. Least Labour in Lamp Room. Most Satisfactory in use. Bulb fitted on springs to withstand any jar, so very little breakage, no flickering, cannot work loose as screw bulbs do. Fitted with the Alkum Battery. Nickel-Steel Type. Four years guarantee, but lasts much longer. Highest continuous illumination with no drop in candle power. Although first cost is higher than lamp with an unreliable lead battery, if averaged through the life of the lamp, it only costs a quarter.

IMMEDIATE LIGHT IN ANY POSITION.

THE LAMP, THAT WILL GUARANTEE YOU INCREASED OUTPUT  
AT LEAST EXPENSE.

MANUFACTURED BY  
**WORSNOP & CO., LTD.,**  
LAMP WORKS, HALIFAX, ENGLAND.





# Colliery Cables

**PIRELLI GENERAL**  
Cable Works, Ltd.

manufacture and install all classes of Colliery Cables. Paper and Vulcanised Bitumen Insulated Cables, "PIGELITE" and other SPECIAL INSULATION CABLES TO MEET SPECIAL NEEDS.

*May we have your enquiries?*

**PIRELLI GENERAL**

**CABLE WORKS, Ltd., SOUTHAMPTON.**

Telephone: SOUTHAMPTON 2141 & 6 lines. Telegram: PIGEKABEL, SOUTHAMPTON.

Proprietors: PIRELLI, LTD., and THE GENERAL ELECTRIC CO., LTD.

BRITISH



MADE

Used all over the world by the leading Collieries,  
Railways and Engineering Companies

**"TOP-DOG"**

linings give  
satisfaction  
where  
others fail

---

May we have  
your enquiry  
when next  
you are  
in the market?

---

## "Top-Dog" Brake Lining

8" wide  $\times$   $\frac{3}{4}$ " thick with oak backing, moulded to Radius.

Supplied to

The Rothervale Collieries of  
Messrs. The United Steel Co., Ltd.

**"TOP-DOG"**

for economy,  
efficiency, and  
silent braking  
have no superior.

**"THE PERFECT BRAKE LINING"**

SOLE MANUFACTURERS OF "TOP-DOG" FRICTION LININGS :

**HUBERT H. P. TRIST & COMPANY**

**BRISTOL, England.**

Telegraphic & Cable Address : Specialities, Bristol. Works : Redfield, Bristol. Telephone : (2 lines) 5593-4.



Telephones :  
Grosvenor 2963 (5 lines).



Telegrams :  
Britrope, Wesac, London.

# British Ropes

*Made by British Labour of British  
Material in Great Britain*

The combined knowledge and experience of the best-known manufacturers of Colliery Haulage and Winding Ropes are always at your service.

Prominent among these are—

*Allan, Whyte & Co., Ltd., Glasgow.*

*W. B. Brown & Co. (Bankhall), Ltd.,*

*Globe Works, Liverpool.*

*Bullivant & Co., Ltd., Dagenham Dock, Essex.*

*Caledonian Wire Rope Co., Ltd., Airdrie, Scotland.*

*Geo. Cradock & Co., Ltd., Wire Rope Works, Wakefield.*

*Craven & Speeding Bros., Ltd., Sunderland.*

*The Excelsior Wire Rope Co., Ltd., Cardiff.*

*Haggie Bros., Ltd., Gateshead-on-Tyne.*

*D. H. & G. Haggie, Ltd., Sunderland.*

*R. S. Newall & Son, Ltd., Linacre, Liverpool.*

*Fredk. W. Scott & Co., Ltd., Reddish, Nr. Stockport.*

*Thos. & Wm. Smith, Ltd., Newcastle-on-Tyne.*

*John Stephens & Son, Ltd., Falmouth.*

*Wilkins Wire & Wire Ropes, Ltd., Eastwood, Notts.*

These names are a guarantee of the finest quality and service obtainable, and are an assurance that we can efficiently cope with any and every order for any rope requirement. The interests of our customers are our first consideration, and the services of our experts in the solution of any difficulties in connection with ropes are gladly given without any charge.

**BRITISH ROPES, LTD.**

**32, Cavendish Square,**

**London,**

**W. 1.**



# MINES AND QUARRIES

## OFFICIAL PUBLICATIONS

### Reports of H.M. Divisional Inspectors of Mines for 1925

Scotland Division	...	...	...	...	1s. 0d. (1s. 1½d.)
Northern Division	...	...	...	...	1s. 0d. (1s. 0½d.)
Yorkshire Division	...	...	...	...	1s. 0d. (1s. 1½d.)
North Midland Division	...	...	...	...	1s. 0d. (1s. 1d.)
Lancashire and North Wales Division	...	...	...	...	1s. 0d. (1s. 1d.)
Cardiff and Newport Division	...	...	...	...	1s. 0d. (1s. 1d.)
Swansea Division	...	...	...	...	1s. 0d. (1s. 1d.)
Midland and Southern Division	...	...	...	...	1s. 0d. (1s. 1½d.)

Report of H.M. Electrical Inspector of Mines for 1925 ... 6d. (7d.)

Fifth Annual Report of the Secretary for Mines, for 1925 (including the Annual Report of H.M. Chief Inspector of Mines for the same period) ... 6s. 0d. (6s. 3d.)

List of Mines in Great Britain and the Isle of Man (1925) ... 18s. 6d. (18s. 11d.)

List of Quarries in Great Britain and the Isle of Man (1922) ... 35s. 0d. (35s. 5d.)

*For Particulars of other Government Publications relating to Mines and Quarries, reference should be made to Mines and Quarries Form No. 1, which may be obtained in the same manner ... Price 2d. (2½d.)*

---

*All prices are net, and those in parentheses include postage.*

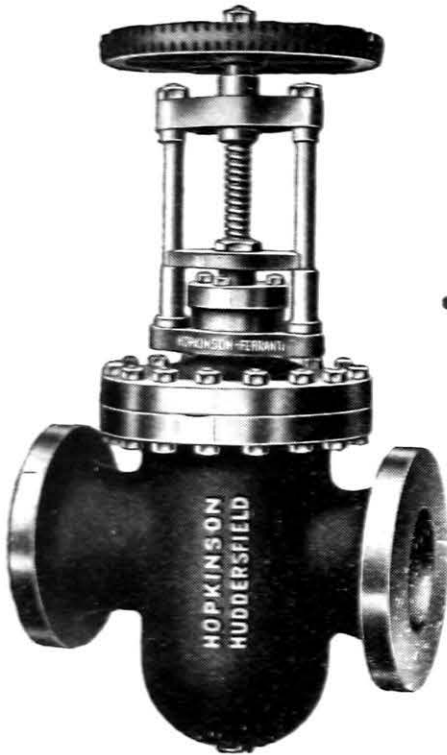
---

**HIS MAJESTY'S STATIONERY OFFICE**

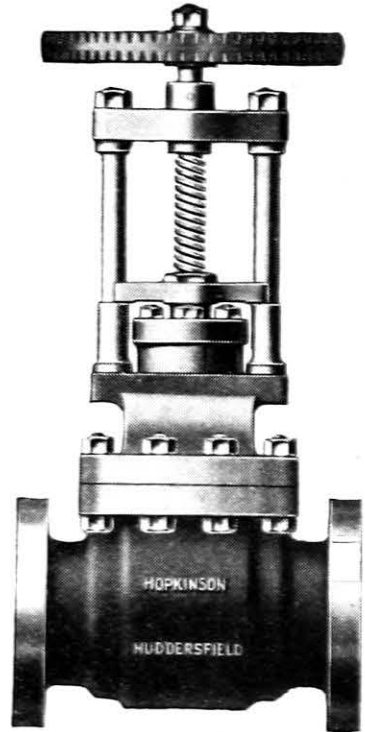
**LONDON, EDINBURGH, MANCHESTER, CARDIFF, BELFAST.**

# HOPKINSON'S PATENT VALVES

FOR ALL PURPOSES AND PRESSURES.



HOPKINSON'S PATENT  
FULLBORE PARALLEL SLIDE VALVE.



HOPKINSON-FERRANTI  
PATENT STEAM STOP VALVE.

FITTED WITH "PLATNAM" VALVES AND SEATS.

"PLATNAM" IS A NON-CORRODIBLE, HARD WEARING, HEAT-RESISTING ALLOY, AND IS IDEAL FOR HIGH PRESSURES AND SUPERHEATED STEAM.

SEE ALSO PAGES XIX, XX, XXI, & outside back cover.

# HOPKINSONS

LIMITED,  
HUDDERSFIELD.

TELEGRAMS  
HOPKINSON  
HUDDERSFIELD  
"VALVESTEM,  
PHONE  
LONDON."

LONDON:  
IMPERIAL HOUSE, KINGSWAY, W.C.2.

TELEPHONE  
HUDDERSFIELD  
1269 (3 LINES)

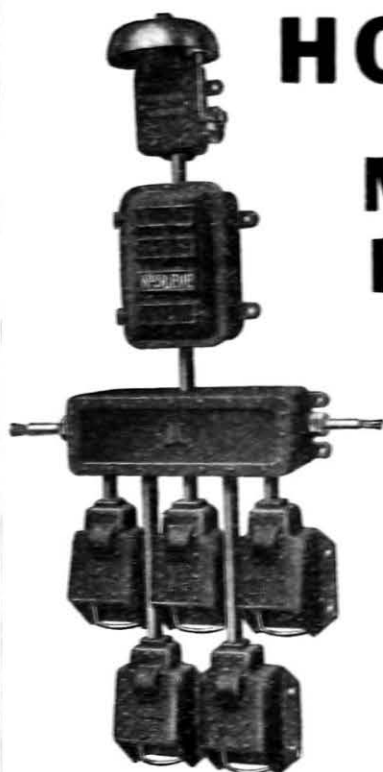
LONDON, REGENT  
0705.

# HOPKINSON'S

PATENT

## MINE SIGNAL INDICATORS.

ELECTRICAL and MECHANICAL  
TYPES.

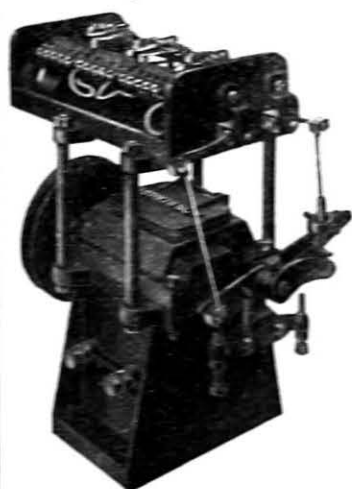


BANK UNIT  
for 4 levels with  
luminous level  
indicator.



ELECTRICAL INDICATOR.

Engine House Unit with two  
dial Indicators. Separate dials  
can be supplied for additional  
levels if desired and any  
number up to five can be  
mounted on one stand.



CANCELLATION GEAR.

Meets the most  
stringent requirements;  
operates on slightest  
movement of engine in  
either direction and  
permits signalling dur-  
ing winding for next  
wind. "Men" signal  
remains on during full  
wind.



Bottom  
and level  
unit.

# HOPKINSONS

LIMITED.

## HUDDERSFIELD.

TELEGRAMS  
HOPKINSON  
HUDDERSFIELD

YALVO STEN,  
PHONE  
LONDON.

London :  
Imperial House, Kingsway, W.C.2

TELEPHONE  
HUDDERSFIELD  
(2589-3 Lines)

LONDON,  
REGENT  
0095.

# HOPKINSON'S

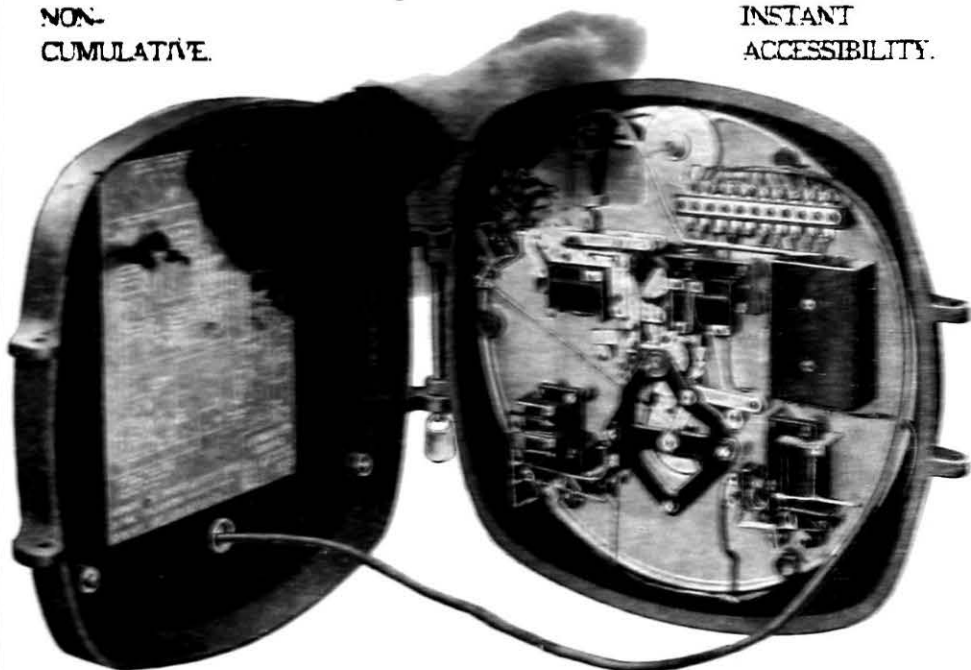
PATENT

## MINE SIGNAL INDICATORS.

ELECTRICAL AND MECHANICAL TYPES.

NON-  
CUMULATIVE.

INSTANT  
ACCESSIBILITY.



INTERIOR VIEW OF HOPKINSON'S PATENT ELECTRICAL INDICATOR  
SHOWING ACCESSIBILITY OF WORKING PARTS.

The Hopkinson System permits of simultaneous signals being given, and comprises a full range of Dial Indicators, Luminous Level Indicators, Cancellation Apparatus, Bells, Ringing Keys, Hooters, Terminal and Joint Boxes, etc.

### SPECIAL FEATURES.

- Adaptable to either Wall or Pedestal Mounting.
- Fully meets Mines Dept. Requirements.
- "Men" Signal on during Complete Wind.
- High Speed Operation. Interlocked Pointers.

# HOPKINSONS

LIMITED.

HUDDERSFIELD.

TELEGRAMS  
HOPKINSON  
HUDDERSFIELD

TELEPHONE  
HUDDERSFIELD  
(259 (3 LINES))

VALVESTEM  
PHONE -  
LONDON.

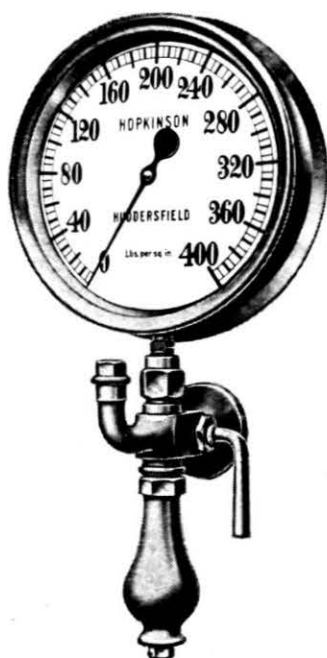
LONDON:  
IMPERIAL HOUSE, KINGSWAY, W.C.2

LONDON:  
REGENT  
0715.

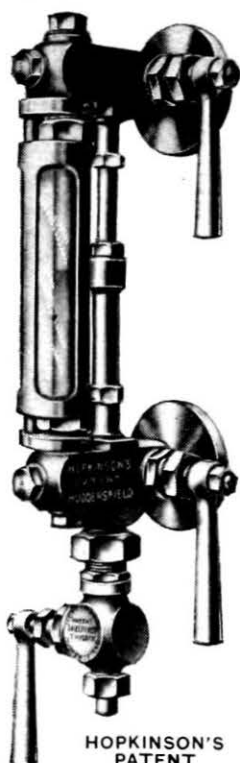
# HOPKINSON'S

## PATENT SAFETY BOILER MOUNTINGS AND VALVES

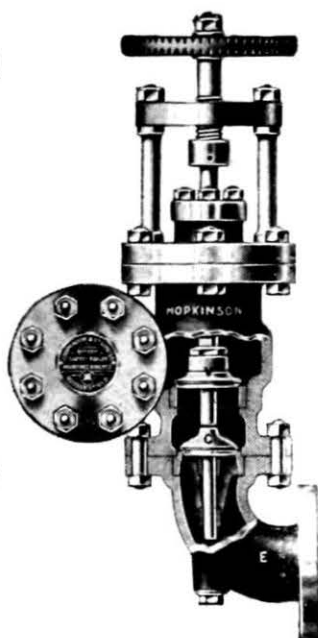
FOR ALL PURPOSES AND PRESSURES.



HOPKINSON'S PATENT  
PRESSURE GAUGE  
AND SYPHON.



HOPKINSON'S  
PATENT  
"ABSOLUTE" WATER GAUGE,



HOPKINSON'S  
PATENT "ACCESSIBLE"  
CHECK FEED VALVE.

FITTED WITH "PLATNAM" VALVES AND SEATS.

"PLATNAM" IS A NON-CORRODIBLE, HARD-WEARING, HEAT-RESISTING ALLOY, AND IS IDEAL FOR HIGH PRESSURES AND SUPERHEAT.

SEE ALSO PAGES XVIII, XIX, XX, & outside back cover.

# HOPKINSONS

LIMITED,  
HUDDERSFIELD.

TELEGRAMS  
"HOPKINSON  
HUDDERSFIELD"

TELEPHONE  
HUDDERSFIELD  
1269 (3 LINES)

"VALVESTEM,  
PHONE  
LONDON."

LONDON:  
IMPERIAL HOUSE, KINGSWAY, W.C.2.

LONDON, REGENT  
0705

MINES DEPARTMENT.

---

---

**REGULATIONS AND ORDERS**  
**RELATING TO MINES UNDER THE COAL**  
**MINES ACT, 1911.**

---

**1926 EDITION.**

**(Including Orders up to 31st January, 1927.)**

---

---

**LONDON:**

**PUBLISHED BY HIS MAJESTY'S STATIONERY OFFICE**

To be purchased directly from H.M. STATIONERY OFFICE at the following addresses :  
Adastral House, Kingsway, London, W.C. 2 ; 120, George Street, Edinburgh ;  
York Street, Manchester ; 1, St. Andrew's Crescent, Cardiff ;  
15, Donegall Square West, Belfast ;  
or, through any Bookseller.

---

1927.

*Price 1s. 4 Nct.*

## NOTE.

This book contains the Orders (including Regulations) of a general nature relating to mines under the Coal Mines Act, 1911, which were in force on the 31st January, 1927, together with the new Rules made by the Board for Mining Examinations, prescribing the qualifications of applicants for certificates of competency, which come into force on the 1st March, 1927 (see page 97).

To facilitate reference, all Orders are printed to read continuously in the form in which they have effect and a general index (under general subject headings and headings for the different classes of persons employed) is included at the end.

The Safety Lamps and Safety Lamps Glasses Orders, the Breathing Apparatus Orders and the Explosives in Coal Mines Orders containing or relating only to the approval of particular types of safety lamps, safety lamps glasses, breathing apparatus or permitted explosives are too long to reprint in full and, instead, lists have been inserted of :—

- |  |   |
|--|---|
| (1) Approved types of Safety Lamps   | } with a reference to<br>the Orders containing<br>the detailed specification<br>of each type. |
| (2) Approved types of Safety Lamps<br>Glasses  |   |
| (3) Approved types of Breathing<br>Apparatus, and  |   |
| (4) " Permitted Explosives," stating the permissible maximum charge of each explosive and giving a reference to the Order in which the explosive is defined. |   |

Lists are also included in the Appendix of :—

- (5) Institutions approved under subsection (6) of Section 9 (Managers' and Under-Managers' certificates).
- (6) Institutions approved under subsection 1 (b) of Section 15 (Firemen's certificates).
- (7) Courses of training approved under the Coal Mines (Qualifications of Surveyors) Order, and
- (8) Societies whose First Aid certificates have been approved for the purposes of the General Regulations, and of the Rules made by the Board for Mining Examinations as to the qualifications of applicants for first and second class certificates of competency.



Section 1 of the Mining Industry Act, 1920, established a "Mines Department" of the Board of Trade under a Secretary for Mines, and enacted that all powers and duties of the Board of Trade in relation to mines and the mining industry shall, subject to the directions of the Board, be exercised and performed through the Secretary for Mines; while Section 2 transferred to the Board of Trade all the powers of a Secretary of State under enactments relating to mines and quarries. Accordingly, in all the Orders made by the Secretary of State which are printed herein *for* "Secretary of State" and "Secretary of State for the Home Department" *read* "Board of Trade"; and *for* "Home Office" *read* "Mines Department."

Mines Department,  
Dean Stanley Street,  
Millbank, S.W.1.  
*January, 1927.*

# TABLE OF CONTENTS.

## Coal Mines Act, 1911.

### GENERAL REGULATIONS :—

	PAGE
1. DATED JULY 10, 1913, AS AMENDED MAY 19, 1914, AND JULY 30, 1920.—	
<i>Part I.</i>	
General .. .. .	1
The Manager .. .. .	5
The Under-Manager .. .. .	6
Officials other than the Manager and Under-Manager, and the Firemen, Examiners, or Deputies .. .. .	6
Firemen, Examiners, and Deputies .. .. .	7
Winding Enginemmen .. .. .	9
Persons in charge of ventilating machines .. .. .	9
Boiler minder .. .. .	10
<i>Part II.</i>	
Air measurements [Section 29 (2)] .. .. .	11
Use of electric lamps other than locked safety lamps [Section 32]	11
Character of winding apparatus, &c. [Section 40 (1)] .. .. .	11
Capping of winding and hauling ropes [Sections 40 (5) and 46]	12
Exemptions from provision requiring two main intake airways [Section 42 (1)] .. .. .	12
Construction of stoppings [Section 42 (3)] .. .. .	13
Signalling (except in sinking pits) [Section 53] :—	
Winding .. .. .	14
Hauling .. .. .	15
Telephones [Section 54] .. .. .	16
Barometer and Hygrometer [Section 71].. .. .	16
Sanitary conveniences [Section 76] .. .. .	16
Storage and use of candles and paraffin wax .. .. .	17
<i>Part III.</i>	
Electricity [Section 60] :—	
Below Ground .. .. .	18
Above Ground.. .. .	27
<i>Part IV.</i>	
Rescue and Ambulance [Section 85]—	
(a) Rescue .. .. .	34
(b) Ambulance .. .. .	37
<i>Part V.</i>	
Surface lines and sidings .. .. .	39
<i>Part VI.</i>	
Additional regulations for sinking .. .. .	41
<i>Part VII.</i>	
Repeal .. .. .	43
2. DATED AUGUST 29, 1913.—	
Accommodation and facilities for taking baths and drying clothes : constitution, powers and duties of committees of management [Section 77] .. .. .	44

	PAGE
3. DATED APRIL 1, 1913.—	
Hours of employment of winding enginemen [Section 57] ..	47
4. DATED MAY 19, 1914, AS AMENDED JULY 30, 1920.—	
Special provisions for Mines served by a Central Rescue Corps	49
Definition of " Breathing Apparatus " .. .. .	51
5. DATED JUNE 3, 1920.—	
Ganister mines .. .. .	51
6. DATED JULY 30, 1920, AS AMENDED NOVEMBER 20, 1924.—	
Precautions against Coal Dust .. .. .	54
Precautions against Spontaneous Combustion .. .. .	56
Additional Regulations dealing with Rescue .. .. .	58
Regulations for use of Electricity on the Surface .. .. .	63
Precautions when working under Moss, &c. .. .. .	64
Certain miscellaneous provisions .. .. .	64
7. DATED FEBRUARY 10, 1922.—	
Use of horses and other animals .. .. .	65
<b>EXPLOSIVES IN COAL MINES ORDERS [SECTION 61] :—</b>	
Dated September 1, 1913 (as amended by subsequent Orders) (omitting Schedules I and II) .. .. .	66
List of Permitted Explosives .. .. .	77
<b>SAFETY LAMPS ORDERS [SECTION 33] *—</b>	
List of Approved Safety Lamps (with date of Order containing detailed specification) .. .. .	79
Approved Glasses .. .. .	91
<b>CERTIFICATES OF COMPETENCY FOR MANAGERS AND UNDER-MANAGERS [SECTIONS 7 TO 13].</b>	
1. Times and places for holding examinations .. .. .	93
2. Rules for the conduct of examinations .. .. .	94
3. Rules as to the qualifications of applicants .. .. .	97
4. Fees to be paid by applicants for certificates .. .. .	104
5. Fees for copies of lost certificates .. .. .	105
<b>FIREMEN'S, EXAMINERS' AND DEPUTIES' CERTIFICATES [SECTION 15].</b>	
1. Form of certificate of qualification .. .. .	106
2. Form of certificate as to Eyesight and Hearing .. .. .	107
<b>SURVEYORS' CERTIFICATES [SECTIONS 20 AND 21].</b>	
Prescribing the qualifications of surveyors .. .. .	108
Times and places for holding examinations .. .. .	93
Fees to be paid by applicants for surveyors' certificates ..	104
<b>SAFETY LAMP MINES [SECTION 35].</b>	
1. Use below ground of apparatus for the electrical relighting of safety lamps .. .. .	110
2. Search of persons employed for prohibited articles .. .. .	111
<b>MISCELLANEOUS.</b>	
1. Hours of employment of winding enginemen. Prescribing date under Section 57 (3) .. .. .	112
2. Procedure and costs of references in regard to cost of main- tenance of washing and drying accommodation [Section 77 (3)]	113

	PAGE
3. Manner of settling disputes under the Act : time and manner of serving notices [Section 116] .. .. .	115
4. Rules as to procedure before referees and cost of proceedings [Section 117 (2)] .. .. .	116
5. Procedure for ascertaining and certifying views of workmen [Section 118] .. .. .	119
6. Manner of testing horses for glanders [Third Schedule] ..	122

### Coal Mines Regulation Act, 1908, Section 1 (5).

Procedure and costs of references .. .. .	123
---	-----

### Notice of Accidents Act, 1906, Section 5.

Requiring notification of certain classes of dangerous occurrences	125
--	-----

---

## APPENDICES.

I.—Order dividing the United Kingdom into Divisions for the purposes of inspection .. .. .	125
II.—Memorandum on the Test of Explosives .. .. .	127
III.—Memorandum on the Storage of Explosives .. .. .	130
IV.—Memorandum on the Test of Safety Lamps .. .. .	136
V.—Memorandum on the Test of Rescue Apparatus ..	142
VI.—Rescue Work. Approved Schemes of Training and Practice, Prescribed tests of Breathing Apparatus and for Members of Rescue Corps, &c., List of Approved Societies and List of Approved Breathing Apparatus .. .. .	146
VII.—Precautions against Coal Dust : Special prescribed tests for certain dust mixtures .. .. .	152
VIII.—Managers' and Under-Managers' Certificates. List of approved Institutions .. .. .	153
IX.—Surveyors' Certificates. List of approved Institutions.	155
X.—Firemen's, &c., and shotfirers' certificates. Memorandum, List of approved Schools, Institutions and Authorities, and Scale of Fees .. .. .	156
List of Orders, Regulations, and Miscellaneous Official Publications relating to Coal Mines .. .. .	161

---

GENERAL INDEX .. .. .	171
-----------------------	-----

---

## Index to Advertisers.

NAME.	ADDRESS.	TELEPHONE NO.	PAGE.
ACKROYD & BEST, LTD. ....	Morley, Nr. Leeds .....	Morley 86 .....	xxx.
ADAMSON, DANIEL, & Co., LTD.....	Dukinfield, Nr. Manchester.....	Ashton-U-Lyne 9 & 609	vi & ix.
ALLEN, ALFRED, & SONS LTD. ....	Lower Gernal, Nr. Dudley .....	Dudley 2106 ...	xxx.
ALLEN WEST & Co., LTD. ....	Brighton .....	Brighton 5704/5	iii & iv.
AVERY, W. & T., LTD. ....	Soho Foundry, Birmingham.....	Smethwick 300	xxiii.
BRITISH ROPES LTD. ....	32, Cavendish Square, London, W.1	Grosvenor 2963	xvi.
COMMERCIAL ENGINEERING Co. ....	11, Commercial St., Birmingham ...	Midland 555 ...	ix.
DANKS, EDWIN, & Co. (Oldbury) LTD.	Oldbury Boiler Works, Birmingham	Oldbury 381/2/3	xxiii.
DRYSDALE & Co., LTD. ....	Yoker, Glasgow .....	Clydebank 480...	xiii.
FRANCOIS CEMENTATION Co., LTD....	Bentley Works, Doncaster .....	Doncaster 413...	xxiv, xxv, xxvi, xxvii & xxviii.
GENERAL ELECTRIC Co., LTD.....	Kingsway, London, W.C.2. ....	Regent 7050 ...	vii.
GUMMERS LTD. ....	Effingham Valve Works, Rotherham	Rotherham 578/9	x.
HARDY PATENT PICK Co., LTD. ....	Heeley, Sheffield .....	Sharrow 573/4/5	ii.
HOLMAN BROS. LTD. ....	Camborne .....	Camborne 75/6	viii.
HOPKINSONS, LTD.....	Britannia Works, Huddersfield .....	Huddersfield 1269 xviii, xix, xx, xxi & xxkvi.	
LATCH & BATCHELOR LTD.....	Hay Mills, Birmingham .....	Victoria 555/6/7	xi.
MINIMAX, LTD. ....	Feltham, Middlesex.....	Feltham 36, 51/2	v.
MORRIS, ROBERT, LTD. ....	Farnworth, Nr. Bolton.....	Farnworth 69...	xii.
NATIONAL ASSOCIATION OF COLLIERY MANAGERS .....	Midland Road, Derby .....	Derby 545 .....	xxxiii.
NOBEL INDUSTRIES, LTD. ....	Buckingham Gate, London, S.W.1	Victoria 9650 '...	xxxiii.
PIRELLI-GENERAL CABLE WORKS, LTD.	Southampton .....	Southampton 2141	xiv.
PULSOMETER ENGINEERING Co., LTD.	Nine Elms Iron Works, Reading ...	Reading 583 ...	vi.
RENOLD, HANS, LTD.....	Didsbury, Manchester .....	Heaton Moor 295	xxxiv.
ROBEY & Co. LTD. ....	Lincoln .....	Lincoln 660 ...	xxii.
SABULITE (GT. BRITAIN) LTD.....	639/643, Salisbury House, E.C.2 ...	London Wall 5360	i.
SIEBE, GORMAN & Co., LTD. ....	187, Westminster Bridge Rd., S.E.1	Hop 3401 (2 lines)	vii.
STANDARD PISTON RING & ENGINEERING Co., LTD. ....	Don Road, Sheffield.....	Sheffield 2149 ...	v.
STEWARTS & LLOYDS, LTD. ....	Glasgow .....	(Glasgow) Central 6900	xxxv.
TRIST, HUBERT, H. P., & Co.....	50, Victoria St., Bristol .....	Bristol 5268 ...	xv.
VLASTO, CLARK & WATSON.....	Stockton Heath, Nr. Warrington ...	Stockton Heath 17	xxix.
WHITEHEAD, J. A. ....	Didsbury, Nr. Manchester .....	Didsbury 112 ...	xxx.
WORSNOP & Co., LTD. ....	Halifax .....	Halifax 100.....	xiii.

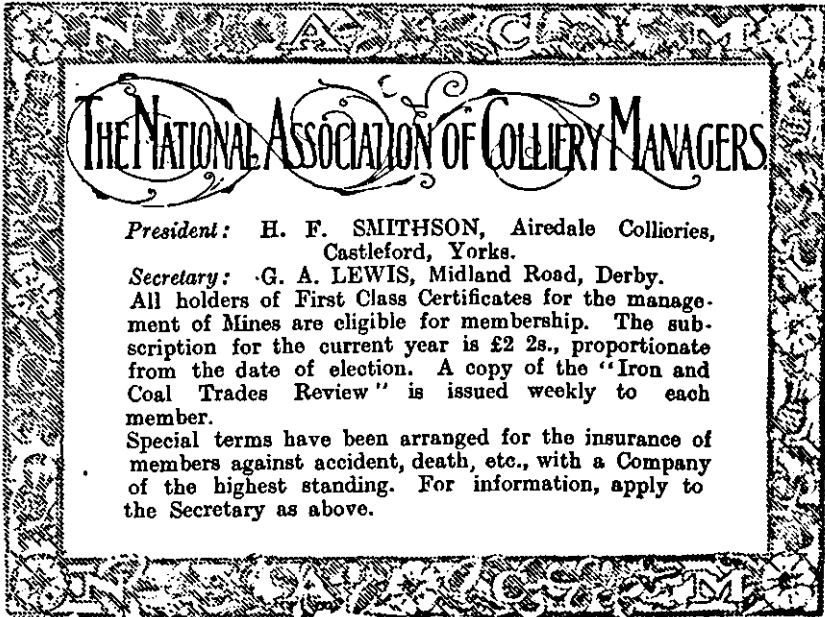
Applications for advertisement space in subsequent issues of this Publication should be addressed to :—  
Walter Judd, Ltd., 47, Gresham Street, London, E.C.2. Telephone : Central 8343.

# WALTER JUDD LTD.

*Advertising Service Agents*

47, GRESHAM ST., LONDON, E.C.

✻ [ Executives are invited to write for a useful folder on sales organisation and advertising. ] ✻



**THE NATIONAL ASSOCIATION OF COLLIERY MANAGERS**

*President:* H. F. SMITHSON, Airedale Collieries,  
Castleford, Yorks.

*Secretary:* G. A. LEWIS, Midland Road, Derby.

All holders of First Class Certificates for the management of Mines are eligible for membership. The subscription for the current year is £2 2s., proportionate from the date of election. A copy of the "Iron and Coal Trades Review" is issued weekly to each member.

Special terms have been arranged for the insurance of members against accident, death, etc., with a Company of the highest standing. For information, apply to the Secretary as above.

# EXPLOSIVES

## *for Mining & Blasting*

DETONATORS · SAFETY FUSE  
 ELECTRIC DETONATORS AND  
 ELECTRIC POWDER FUSES  
 CABLE · BATTERIES AND ALL  
 SHOT-FIRING ACCESSORIES

*Descriptive booklets free on request from the Publicity  
Department*



**NOBEL INDUSTRIES LTD.**  
 NOBEL HOUSE  
 BUCKINGHAM GATE, LONDON, S.W.1



*Agencies throughout the United Kingdom and in most foreign countries*

# THE ESSENTIALS OF SUCCESSFUL TRANSMISSION

**A** POWER transmission medium to function satisfactorily must be positive and flexible, it must also be reliable and eliminate breakdown delays and expenses. Gears with their noise and vibration, and belts with their attendant slip, do not transmit power efficiently or economically. On one occasion, a belt drive having been coated with an anti-slipping compound, containing apparently some resin, was the cause of a disastrous fire in a gas works. Renold Chain Drives possess all the essentials of the successful transmission medium. They are as positive as gears, flexible as belts, and they combine the advantages of both with greater economy and safety.

## RENOLD CHAIN DRIVES

**POSITIVE, FLEXIBLE,  
ECONOMICAL and SAFE**

*Renold Hollow  
Stud Chain for  
Conveying and  
Elevating.*

HANS RENOLD LTD.  
— DIDSBURY —  
M A N C H E S T E R

*Renold Stan-  
dard Chain  
Drives for  
universal  
application.*

Send for Literature on Chain Driving

WELDED and WELDLESS  
**STEEL TUBES**

For

**MINING PURPOSES**

With

VICTAULIC JOINTS  
LOOSE FLANGE JOINTS  
SPIGOT and SOCKET JOINTS  
For Lead and Yarn

or

JOINTS FOR WELDING INTO  
CONTINUOUS MAINS AT SITE.

---

*Catalogues on Application.*

---

**STEWARTS AND LLOYDS LTD.**

**GLASGOW**

**BIRMINGHAM**

**LONDON**

41, Oswald Street,  
C.1.

Broad Street  
Chambers.

Winchester House,  
Old Broad Street, E.C.2.

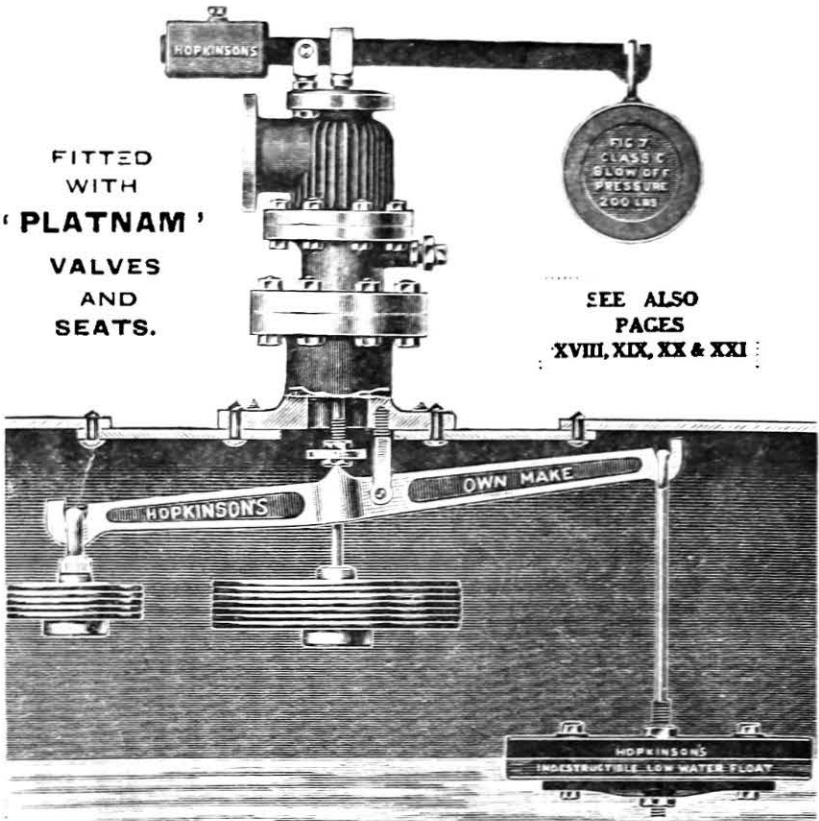


# HOPKINSON'S PATENT SAFETY BOILER MOUNTINGS AND VALVES

FITTED  
WITH  
"PLATNAM"  
VALVES  
AND  
SEATS.



SEE ALSO  
PAGES  
XVIII, XIX, XX & XXI



HOPKINSON'S PATENT "DUAD" SAFETY VALVE for high steam & low water

"PLATNAM" IS A NON-CORRODIBLE, HARD WEARING, HEAT-RESISTING ALLOY AND IS IDEAL FOR HIGH PRESSURES AND SUPERHEATED STEAM.

# HOPKINSONS

LIMITED,  
HUDDERSFIELD.

TELEGRAMS  
"HOPKINSON  
HUDDERSFIELD"

TELEPHONE  
HUDDERSFIELD  
1269 (3 LINES)

"VALVESTEM,  
PHONE,  
LONDON."

LONDON:  
IMPERIAL HOUSE, KINGSWAY, W.C.2.

LONDON  
REGENT  
0705.