

Gopal Krishna Gokhale

# Gokhale Institute of Politics and Economics

(Deemed to be University)

Pune – 411 004

## ANNUAL REPORT 2013 - 2014





## **Contents**

Message from the Director /	<b>1</b>
Vision and Mission Statement /	<b>2</b>
Board of Management /	<b>3</b>
About the Institute /	<b>4</b>
Research Centres at the Institute /	<b>6</b>
Faculty for the year 2013-2014 /	<b>8</b>
Completed and on-going Projects /	<b>10</b>
Publications of Faculty Members /	<b>14</b>
Participation in Conferences, Seminars, Workshops, Lectures, etc. /	<b>18</b>
Election/Nomination to Professional, Educational, and Non-academic bodies, etc. /	<b>25</b>
Seminars/Conferences/Workshops Organised at the Institute /	<b>26</b>
Academic Programmes (M.A., Ph.D.) /	<b>29</b>
20th Convocation /	<b>32</b>
Ph.D. Students /	<b>34</b>
Public Lecture Series /	<b>38</b>
Library Services /	<b>40</b>
The Computer Centre /	<b>41</b>
Publications /	<b>42</b>
Appointments, Retirements, Resignations, etc. /	<b>43</b>
Staff Quarters and Hostels /	<b>44</b>
Student Activities /	<b>45</b>



PRESENTED BY  
MR. S. HEB PANT  
RULER OF AJMUR.  
TO  
GOVINDA INSTITUTE  
OF  
POLITICS AND ECONOMICS  
FOUNDED ONGLE  
BY  
MR. BAHADUR R. R. K.  
OF  
SATARA  
AN INITIAL DONATION

## **Message from the Director**

Gokhale Institute of Politics and Economics (GIPE) was established in 1930 by the Late Rao Bahadur R.R. Kale, M.L.C., as a centre for higher learning and research in economics in remembrance of the great Indian nationalist leader Shri Gopal Krishna Gokhale. Over the past eight decades, the Institute has evolved into a premier institute of advanced study in economics with faculties and alumni who have distinguished themselves nationally and internationally as academicians, policy-makers and consultants.

Gokhale Institute of Politics and Economics has been widely recognized for its pioneering contributions in the subjects of Rural Development, Co-operation, Poverty Alleviation, Employment Guarantee, Crop Insurance, Planning, Federal Finance, Input-Output Economics, Agricultural Development, Irrigation and Demography and in several other areas related to the social and economic problems of India.

Our excellence as an Institute of higher learning has been recognized both in India and abroad. The Reserve Bank of India, Ford Foundation, Planning Commission and Kamalnayan Bajaj Foundation have each instituted Chairs for distinguished faculties in Finance, International Economics,

Planning and Development, and Industrial Economics respectively at the GIPE.

Although primarily a research Institute, GIPE is also renowned for the robust teaching programme leading to award of M.A. and Ph.D. degrees in Economics, initially of University of Bombay and later of University of Pune. In 1993, the Institute was recognised by University Grants Commission as an institution Deemed to be University.

An important aspect of our evolution as an Institute of Economics is the increasingly interdisciplinary approach to the subject. In accordance with this approach and to enhance our role as a Deemed University, the Institute has launched two new masters programmes in Financial Economics and Agribusiness Economics from July 2011. In addition, the Institute has considerably expanded its Ph.D. programme to 41 registered students. The Institute has also initiated two student and faculty exchange programmes, one with the University of Goettingen and the other with a consortium of Canadian universities under the Ontario-Maharashtra-Goa (OMG) programme.

The Institute has pleasure in presenting the Annual Report of its activities for the year 2013-2014.

**Rajas Parchure**

Professor and Officiating Director

## **Vision and Mission Statement**



### ***Vision***

*To conduct research, education and extension on the foremost social and economic problems at national and international levels with the aim of providing viable solutions for decision makers for the betterment of human life.*

---

### ***Mission***

*Gokhale Institute of Politics and Economics strives to undertake research and provides education in all the fields of economics with the singular purpose of contributing its might to enhance economic betterment and social welfare in the country.*

---

## Board of Management

### Composition of the Board of Management (as on March 31, 2014)

Composition	Position	Nominating / appointing Authorities	Name of the Member and Address
i) President or Vice-President of the Servants of India Society	Chairman	Ex-Officio	Shri Madhusudan Sahoo, President, Servants of India Society, P.O. Baxibazar, Cuttack 753001, Orissa
ii) Three nominees of the Servants of India Society	Member	Servants of India Society	Shri Ramakanta Lenka Member, Servants of India Society, Rayagada Centre, Thakkar Bapa Ashram, Rayagada 765 001, Orissa
	Member	Servants of India Society	Shri M.B. Deshmukh Secretary, Servants of India Society, Pune 411 004
	Member	Servants of India Society	Dr. Rajiv Kumar Senior Fellow Centre for Policy Research New Delhi
iii) One nominee of the Founder of the Institute	Member	RBRR Kale Trust	Dr. Sulabha Brahme 129 B/2, Erandavane, Pune 411 004
iv) One nominee of the Chairman, University Grants Commission	Member	The Chairman, UGC	--
v) One nominee of the Ministry of Human Resource Development, Government of India	Member	The MHRD, Govt. of India	Department of Secondary and Higher Education, Ministry of Human Resource Development, Government of India, Shastri Bhawan, New Delhi 110 001
vi) Director of Higher Education, Government of Maharashtra, or his nominee not below the rank of Joint Director	Member	Ex-Officio	Dr. S.S. Shete Joint Director (Higher Education) Government of Maharashtra Pune Region, Pune 411 001
vii) Director of the Institute	Member-Secretary	Ex-Officio	Prof. Rajas Parchure ( <i>Officiating Director</i> )
viii) Joint Director	Member	Ex-Officio	--
ix) Dean of Faculty, if any	N.A.	--	--
x) Three members of the academic staff: (a) One Professor (b) One Reader (c) One Lecturer (by rotation according to seniority)	Member	Director, GIPE	--
	Member	Director, GIPE	Dr. Sangeeta Shroff
	Member	Director, GIPE	Shri Vilas Jadhav

## About the Institute

Gokhale Institute of Politics and Economics is one of the oldest research and training institutes in economics in the country. It was founded on the 6th of June 1930 with an endowment offered to the Servants of India Society by the late Rao Bahadur R.R. Kale, Member of the Legislative Council from Satara. The Servants of India Society, founded by the late Shri Gopal Krishna Gokhale, is the Trustee of the Institute. The Institute is registered under the Societies Registration Act, 1860, and the Bombay Public Trusts Act, 1950.

The object of the Institute has been to conduct research into the economic and political problems of India and to train research workers in these subjects. Under the pioneering leadership of the

late Professor D.R. Gadgil, its first Director, the Institute set the highest standards for quality research, teaching and training in various branches of economics.

Keeping in view the eminence of the faculty, the contribution the Institute has made in teaching, training and research in economics, availability of physical infrastructure and potential of the Institute, the Government of India, on the advice of the University Grants Commission, awarded the Institute the status of a Deemed to be University on May 9, 1993, the birth anniversary of the late Shri Gopal Krishna Gokhale after whom the Institute is named.

---

## Research

The main thrust areas of research at the Institute are agricultural economics and rural development, population studies, input-output studies for planning and development, microeconomics, macroeconomics, monetary economics and finance, public economics and international economics.

Various ministries and public funding agencies, including the Government of Maharashtra and private foundations such as Sir Dorabjee Tata

Trust, financed the research activities of the Institute in its early years. Subsequently, in 1954, the Union Ministry of Food and Agriculture established, and has supported since then, the Agro-Economic Research Centre of the Institute. During the early fifties, the Rockefeller Foundation made a substantial grant, spread over several years, for the conduct of a research programme in rural demography. By the time this grant period came to an end, the Union Ministry of Health, which had



given grants for conducting specific demographic studies in 1954-57, decided in 1964 to strengthen and expand the research work on population by financing, on a continuing basis, a Population Research Centre as an integral part of the Institute. The Ford Foundation gave very generous financial assistance for more than a decade beginning in the year 1956. Later, the Foundation, in collaboration with the Planning Commission, provided a separate grant for research and training in the areas of planning and development, mainly devoted to input-output studies. The Planning Commission has also given an endowment grant to the Institute to establish a chair and a unit for promoting teaching, research and informed debate on all issues relating to Planning and Development. The above-mentioned chair is named the 'Professor D.R. Gadgil Chair of Planning and Development'.

In 1962, the University Grants Commission recognised the Institute as a Centre of Advanced

Study in Agricultural Economics, and later, in 1964 as a Centre of Advanced Study in Economics. In 1977 the UGC, as a part of its Area Studies Programme, established a Centre of Study of the Economies of East European Countries. In the same year, the Reserve Bank of India instituted a chair of finance. In 1989, the Ford Foundation gave a generous endowment grant to fund a chair and to establish a section in international economics to carry out research activities in international economics and related subjects. This grant also included support for the post of a Librarian and for acquisition of books and journals. Similarly, in 2005, the Kamalnayan Bajaj Trust gave a generous grant to fund a chair of economics.

The University Grants Commission, New Delhi, has sanctioned the Centre for Study of Social Exclusion and Inclusive Policy (CSSE & IP) in 2008 to carry out research and teaching in the areas of social exclusion, discrimination and inclusive policy.

---

### **Teaching**

The Institute was initially affiliated to the University of Bombay, conducting the M.A. Programme in economics and supervising the work of students working towards research degrees of that University. In 1949, with the establishment of the University of Poona, the Institute became a constituent recognised institute of the new University. Till 1993 the Institute functioned, for all academic purposes, as the Department of Economics of this University. With the decision of the University to establish a separate Department of Economics at its campus, the Institute, as a Centre of Advanced Study in Economics, was granted effective autonomy in 1986 in designing courses, teaching and examination of the M.A. degree in

economics. As a Deemed University the Institute now awards its own M.A. and Ph.D. degrees in economics. After acquiring the new status, the syllabi of the courses offered at the Institute were thoroughly revised on the basis of the recommendations of a committee constituted for the purpose. Courses in the M.A. programmes of the Institute are being regularly updated on the recommendations of the Board of Studies and the Academic Council. During the academic year 2013-14 the Institute offered three post-graduate programmes, viz., M.A. (Economics), M.A. (Financial Economics) and M.A. (Agribusiness Economics).

---

### **Training**

In April 1989 the University Grants Commission selected the Institute for financial assistance in conducting refresher courses in economics for in-service university and college teachers from the western region of the country. In 1994, a year after the grant of Deemed to be University status to the Institute, the UGC

extended the catchment area of the Institute for its refresher courses to the entire country. Since the inception of this scheme by the UGC, the Institute has been conducting UGC - sponsored refresher courses for university and college teachers as well as workshops for government servants and others from across the country from time to time.



## Research Centres at the Institute

The Institute has three research centres established by the Central Government and University Grants Commission.

### Agro-Economic Research Centre (AERC)

The Agro-Economic Research Centre (AERC) Pune was established by the Union Ministry of Food and Agriculture in 1954. It has been an integral part of the Institute since its inception.

In 1962, on the basis of the quality and extent of work done by GIPE, its professional reputation, its contribution to research in agricultural economics and its potential for further development, the University Grants Commission selected it as a Centre of Advanced Study in Agricultural Economics. Subsequently the field of study of the Centre was expanded and it was re-designated as the Centre for Advanced Study in Economics.

The Centre also conducts studies allotted to the Institute by various agencies such as the Government of Maharashtra, NABARD and

Planning Commission, Government of India.

The AERC has completed about 160 studies since its inception. Its activities cover Farm Business Surveys, Studies related to Irrigation, Watershed Management, Rural Electrification, Village Surveys, Rural Credit, Agricultural Tenancy, Co-operation, Droughts and Famines, Crop Insurance, Agricultural Marketing, Agricultural Exports, Poverty Alleviation, etc.

A large number of these studies have made significant contributions to the field of agricultural economics and agricultural development of the country. These studies have been widely recognized by policy-makers and academicians and serve as benchmarks of excellence in their respective fields.

### Population Research Centre (PRC)

'Population Studies' at the Institute predate the formulation of population policy, establishment of the family planning programme by the Government of India and founding of Population Research Centres. The Institute has played a pioneering role in conducting demographic surveys in India.

A demographic survey of Kolhapur city in 1945 made a lasting contribution towards evolving and establishing a standardized methodology of demographic surveys. A research centre in demography, the first of its kind in the country, was set up at the Institute in 1949. In 1964, the Ministry strengthened and extended the research work on population by establishing a Demographic Research Centre as a part of the Institute. In 1978-79, in pursuance of the recommendations of the Demography Advisory Committee, the Centre was re-designated as a Population Research Centre for the State of Maharashtra. It has earned the distinction of being included in the category of 'fully developed' centres according to the norms of the Ministry of Health and Family Welfare.

In the fifties, when no information on

demographic issues was available, the Centre started its work by conducting demographic surveys and thus contributed in a major way to the area of survey methodology. After the launch of the family planning programme at the official level, the Centre contributed by actively participating in the implementation of the sterilisation programme and by undertaking communication-cum-action studies. Evaluation of the after-effects of vasectomy camps and acceptance of the loop as an IUD gave valuable inputs about the methods of family planning.

Various dimensions of the family planning programme at its different stages, starting with its communication methods and including several of its other aspects such as compulsion during the emergency, adoption of spacing methods, maternal and child health, withdrawal of the targets, RCH approach of the programme, RTI/STI, client satisfaction and unwanted pregnancies have been studied by the Centre. The work of NGOs in the field of family welfare has also been evaluated. In recent years, evaluation of the sterilisation bed

reservation scheme, functioning of family welfare training institutions, ultrasound sonography centres and urban health posts has been carried out.

In the area of data collection on a wide scale, the Institute has independently carried out or participated in major surveys in 1980s and 1990s (NFMS, 1980; NFHS, 1992-93; and RCH Baseline Survey, 1998). Apart from evaluative and fact-finding surveys, many analytical studies are carried out. Recently a study on the cost of health care in public hospitals in Maharashtra was completed.

The Centre has just completed two rounds of a World Bank-sponsored research study on the quality of health care (client and provider satisfaction) in India/Maharashtra. The demography of India's tribal population is another recently completed research project. Currently, the Centre is involved in activities related to the strengthening of the Health Management Information System (HMIS), a new initiative of the Ministry to collect the district and facility level health data on a monthly basis.

### **Centre for the Study of Social Exclusion and Inclusive Policy (CSSE&IP)**

CSSE&IP is a multi-disciplinary research centre established by the UGC in the year 2008 to carry out research and teaching in the areas of social exclusion, discrimination and inclusive policy. Its key objective is to conceptualize and define problems related to discrimination, exclusion and

inclusion based on caste, ethnicity and religion. It focuses on developing an understanding of the nature and dynamics of exclusion and discrimination at both theoretical and empirical levels.

Besides these three centres, the Institute also houses four prestigious Chair Professorships, viz.,

1. RBI Chair Professor of Finance for research and teaching in Monetary and Financial Economics (funded by Reserve Bank of India)
2. D.R. Gadgil Chair Professor of Planning and Development (funded by Planning Commission of India)
3. Ford Foundation Chair Professor of International Economics (funded by Ford Foundation)
4. Kamalnayan Bajaj Chair Professor of Industrial Economics (funded by Kamalnayan Bajaj Foundation)



## Faculty for the year 2012-2013

Name of the Faculty member	Designation	Specialization	Qualification
Prof. R. Parchure	Professor & Offg. Director	Economic Theory, Finance, Insurance	M.A., M.Phil., Ph.D.
Dr. R. Nagarajan	Associate Professor	Population Studies	M.A., M.Phil., Ph.D.
Dr. Deepak Shah	Associate Professor	Agricultural Economics	M.Sc., Ph.D.
Dr. Sangeeta Shroff	Associate Professor	Agricultural Economics	M.A., M.Phil., Ph.D.
Dr. S.S. Kalamkar	Reader	Agricultural Development Policy, Agricultural Production, Resource Economics	M.Sc., Ph.D.
Dr. Jayanti Kajale	Reader	Agricultural Economics	M. A., Ph. D.
Dr. Prashant Bansode	Reader	Sociology of Agrarian Society, Sociology of Marginalized Groups, Sociology of Social Movements	M.A., Ph.D.
Dr. K.C. Thaware	Reader	Financial Institutions, Forestry Economics, Co-operation	M.A., M.Phil., Ph.D.
Dr. Anjali Radkar	Reader	Population Studies	M.Sc., Ph.D.
Smt. Vini Sivanandan	Assistant Professor	Demography	M.Sc., M.P.S.
Dr. Anurag Asawa	Assistant Professor	Mathematical Economics, Econometrics	M.A., M.Phil., Ph.D.
Dr. Lalitagauri Kulkarni	Assistant Professor	Financial Economics	M.A., Ph.D.
Dr. Debasish Nandy	Assistant Professor	Micro-Economics, Regional Economics, Informatics, Demography and Development Studies	M.A., Ph.D.
Smt. Atreyee Sinha Chakraborty	Assistant Professor	International Economics, Environmental Economics	M.Sc., M.Phil.
Shri Naresh Bodkhe	Assistant Professor	Law and Economics, International Economics	M.A.
Dr. Nanaji Shewale	Librarian	Library Science	A.D.I.S., Ph.D.
Dr. P.N. Rath	Deputy Librarian	Bibliography	M. Lib., Ph.D.

Name of the Faculty member	Designation	Specialization	Qualification
Shri Vilas Jadhav	Documentation Officer	Library Science	M.Lib.
Shri Sunil Bhosale	Research Associate	Microfinance, Industry, Labour	M.A., PGDFT
Dr. S.A. Suryawanshi	Research Associate	Agriculture (Rural Development)	M.A., M. Phil., Ph.D.
Dr. T. Abhilash	Assistant Professor	Adivasi Land Alienation and Autonomy Self-Rule in South Asia, State and Ethnic Minority	M.A., M. Phil., Ph.D.
Dr. K.S. Hari	Assistant Professor	Development Economics, Public Economics	M.A., M. Phil., Ph.D.
Dr. R. Nilakantan	Assistant Professor	Development Economics	M.A., Ph.D.
Dr. K.S. Reddy	Assistant Professor	Monetary Economics and Banking	M.A., M. Phil., Ph.D.
Dr. S. Suddhasil	Assistant Professor	Population Economics, Inequality (Spatial, Social Occupational, Inter-temporal), Demography, Environment and Resources Economics, Development Economics, Spatial Economics/ Econometrics, Microeconomics	M.A., Ph.D.
Dr. Prema J. Borkar	Assistant Professor	Agricultural Economics	M.Sc. (Agri.), Ph.D.
Dr. Dilip B. Kajale	Assistant Professor	Agricultural Economics, Market and Marketing of Agro Food and Supply Chain in Agriculture	M.Sc. (Agri.), Ph.D.
Prof V.V.N. Somayajulu	Visiting Faculty	Economics, Econometrics, Industrial Economics, Input-Output Programming Economics	M.A., Ph.D.
Dr. N. Benjamin	Visiting Faculty	Economic and Social History	M.A., Ph.D.
Prof. H.M. Desarda	Visiting Faculty	Land, Water, Drought Irrigation, Employment, Agriculture, Environment and Ecology	M.A. (Economics)
Shri Pramod Joshi	Info. Scientist	ComputerScience	M.Sc. (Com. Science)

## Completed and on-going projects

### Projects Completed (2013-2014)

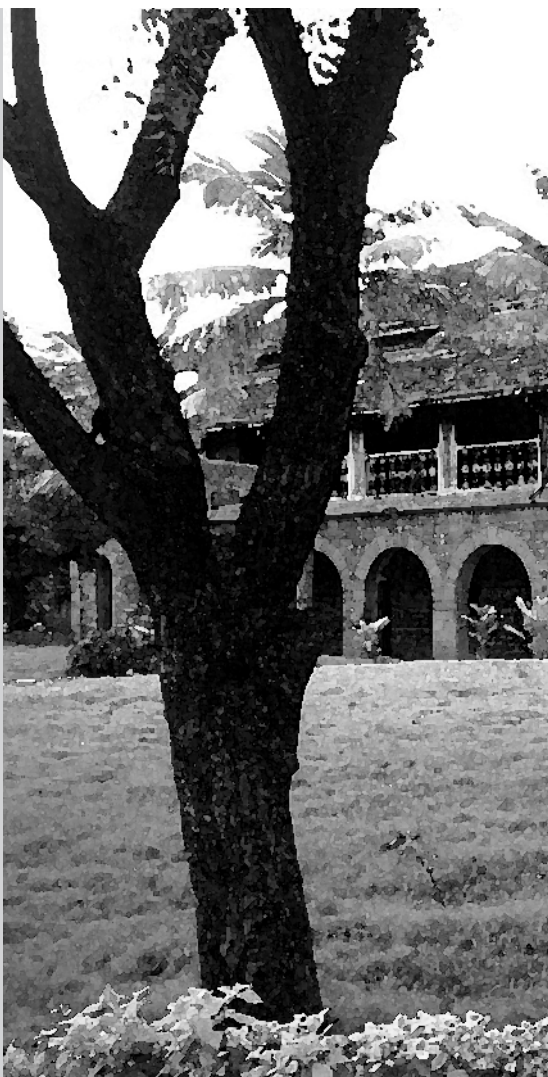
#### A) Funded /Supported by Grants

##### i) Ministry of Agriculture, Government of India, New Delhi

1. "Assessment of Crop-wise Marketable and Marketed Surplus of Major Foodgrains and Post-Harvest Losses in Maharashtra", Sangeeta Shroff and Jayanti Kajale.
2. "Problems and Prospects of Soyabean Cultivation in Maharashtra", Sangeeta Shroff and Jayanti Kajale.
3. "Assessment of Pre and Post-Harvest Losses in Tur and Soyabean Crops in Maharashtra", Deepak Shah.

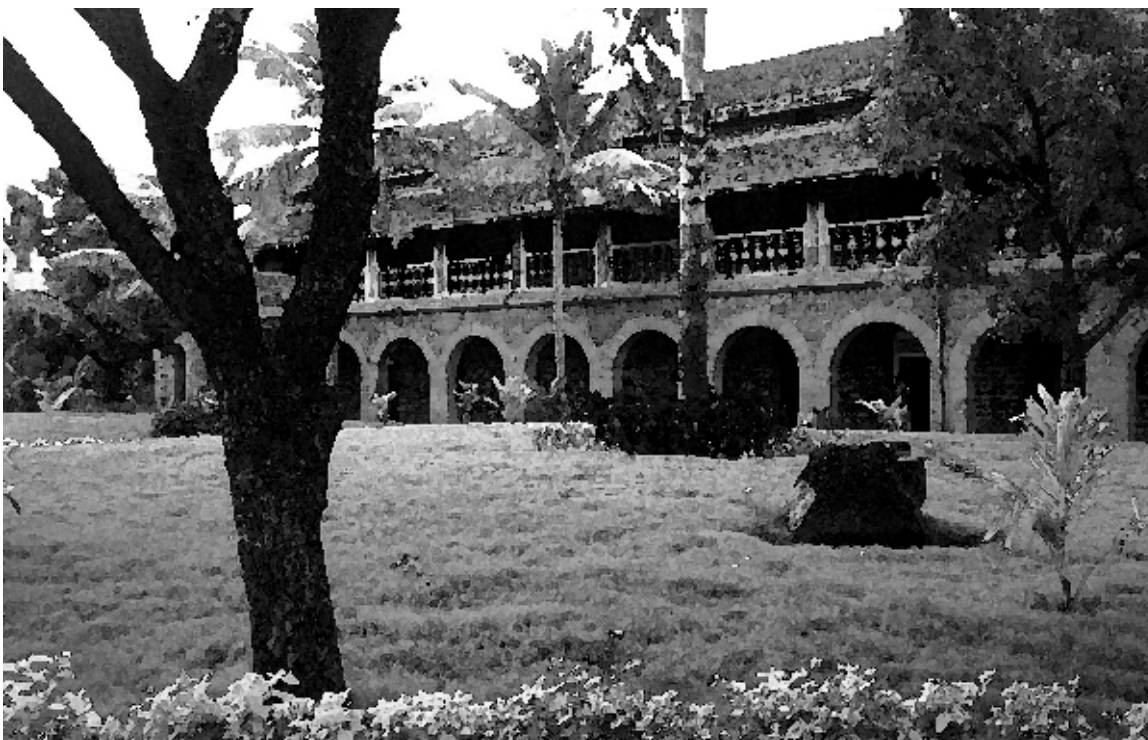
##### ii) Ministry of Health and Family Welfare, Government of India, New Delhi

1. "Quarterly Monitoring of Programme Implementation Plan (PIP) under NRHM", R. Nagarajan, Vini Sivanandan, Arun Pisal, Akram Khan, R.S. Pol and A.P. Prashik.
2. "Quality Monitoring of State Programme Implementation Plan in Ahmednagar district (2012-2013), Maharashtra", Vini Sivanandan, A. Khan, R.S. Pol and R. Nagarajan.
3. "Monitoring and Evaluation of Programme Implementation: Aurangabad District (2013-2014), Maharashtra", Vini Sivanandan, Arun Pisal, A.P. Prashik and R. Nagarajan.
4. "Monitoring and Evaluation of Programme Implementation Plan, 2013-14: Beed District, Maharashtra", Vini Sivanandan, Arun Pisal, R.S. Pol and R. Nagarajan.
5. "Monitoring of DLHS-4 in Maharashtra", Vini Sivanandan and A.P. Prashik.
6. "Field Visits to the Districts in Connection with HMIS", Vini Sivanandan, Vandana Shivnekar, Arun Pisal, Akram Khan, R.S. Pol and A.P. Prashik.
7. "Monthly On-line Verification of HMIS Data for the Districts of Maharashtra", Vini Sivanandan, Vandana Shivnekar, Arun Pisal, Akram Khan, R.S. Pol and A.P. Prashik.
8. "Comparison of Facility Masters of HMIS and MCTS", Vini Sivanandan.



### B) Funded by External Agencies

1. "Study on Capital Flows, Exchange Rate Volatility and Financial Sector Stability", Rajas K. Parchure and Lalitagauri Kulkarni, sponsored by Reserve Bank of India.
2. "Credit Risk Modelling and Validation of a major public sector bank in India", Rajas K. Parchure and Lalitagauri Kulkarni, sponsored by Deloitte.
3. "The Contribution of the TATA Group to the Indian Economy", Rajas K. Parchure, sponsored by Reserve Bank of India.
4. "Consolidated Report on Impact Assessment of the Implementation of the Revival Package for Short Term Co-operative Credit Structure (STCCS) in States of India (Maharashtra, Bihar, Andhra Pradesh, Tamil Nadu)", Rajas K. Parchure and K.C. Thaware, Sponsored by NABARD.
5. "Study on Benefits and Costs of Audit Mechanism", Rajas K. Parchure and Lalitagauri Kulkarni, sponsored by ICWAI.
6. "Understanding the Son Preference in Beed District", Anjali Radkar, sponsored by SWISS AID.
7. "SATHI: Safe Adolescent Transition and Health Initiative Five District – Multi Site Project for Improving the Reproductive Health of Married Adolescent Girls, Midline Evaluation", Anjali Radkar, sponsored by IHMP.
8. "Regional Growth Strategies for the Rest of Maharashtra", Naresh Bodkhe and Pradeep Apte sponsored by Government of Maharashtra.
9. "Jalana Vision Document- 2032", Rajas Parchure, Naresh Bodkhe, Deepak Shah, Anjali Radkar, V.V.N. Somayajulu, Sangeeta Shroff and Prashant Bansode, sponsored by Government of Maharashtra.
10. "Reversing Son Preference: Study of Contributory Factors", Debasish Nandy, sponsored by UNFPA.



## Projects in Progress (2013-2014)

### A) Funded /Supported by Grants

- i) **Ministry of Agriculture, Government of India, New Delhi**
1. "The Relationship between Wholesale Prices, Export Prices and Prices Realized by Farmers for Onion and Grapes in Maharashtra", Sangeeta Shroff, Deepak Shah and Jayanti Kajale.
  2. "Evaluation of CS-Central Sheep Breeding Farm, Hissar", Sangeeta Shroff and Jayanti Kajale.
  5. "Monitoring and Evaluation of Programme Implementation Plan, 2014-15: Bhandara District, Maharashtra", Akram Khan, A.P. Prashik and Vini Sivanandan.
  6. "Monitoring and Evaluation of Programme Implementation Plan, 2014-15: Gadchiroli District, Maharashtra", Vini Sivanandan, Arun Pisal and R.S. Pol.
  7. "Evaluation of Janani Shishu Suraksha Karyakram (JSSK) in Maharashtra", R. Nagarajan, Vini Sivanandan, Sanjeevaneey Mulay, Arun Pisal, Akram Khan, R.S. Pol, A.P. Prashik and Vandana Shivnekar.
- ii) **Ministry of Health and Family Welfare, Government of India, New Delhi**
1. "Monitoring and Evaluation of Programme Implementation Plan, 2013-14: Hingoli District, Maharashtra", Arun Pisal, A.P. Prashik, Vini Sivanandan and R. Nagarajan.
  2. "Monitoring and Evaluation of Programme Implementation Plan, 2014-15: Kolhapur District, Maharashtra", Vini Sivanandan, Arun Pisal and R.S. Pol.
  3. "Monitoring and Evaluation of Programme Implementation Plan, 2014-15: Sangli District, Maharashtra", Akram Khan, A.P. Prashik and Vini Sivanandan.
  4. "Monitoring and Evaluation of Programme Implementation Plan, 2014-15: Pune District, Maharashtra", Vini Sivanandan and R.S. Pol.
  8. "Activities Related to HMIS during 2013-2014", Vini Sivanandan, Arun Pisal, Akram Khan, R.S. Pol and A.P. Prashik.
  9. "An Assessment of ASHA Scheme in Maharashtra", Vini Sivanandan, Arun Pisal, Akram Khan, R.S. Pol and A.P. Prashik.
- iii) **University Grants Commission, New Delhi**
1. "Impact of Developmental Schemes on the Underprivileged Sections of the Society in Maharashtra State", Kailas C. Thaware.



### B) Funded by Other External Agencies

1. “Medium and Long-term Farm Impact of Debt Waiver and Relief Scheme”, Rajas Parchure, sponsored by NABARD.
2. “Preparation of Pre-Feasibility Report for Nira-Deoghar Irrigation Project: Taluka Bhor, District Pune: Through A Uniquely Designed Public - Private Partnership [PPP] Model”, Rajas Parchure and Anurag Asawa, sponsored by MKVDC, Maharashtra.
- 12 3. “Socio-Economic Issues in Maharashtra”, Rajas Parchure, sponsored by Life and General Associates.
4. “Reversing Son Preference: A Study of Contributory Factors”, Anjali Radkar, sponsored by UNFPA.
5. “A Study to Assess the Impact of RGNF Scholarship to SC/ST Students”, Prashant Bansode, sponsored by CSSE and IP.
6. “Socio-Economic Inclusion of a Nomadic Tribe: A Case of Malapandaram in Kerala”, Prashant Bansode and Abhilash T., sponsored by ICSSR, New Delhi.
7. “Female Domestic Workers and Socio-Economic Inclusion”, Sunil Bhau Bhosale, sponsored by ICSSR, New Delhi.
8. “Preparation of Block Profile of 35 Districts of Maharashtra”, Anjali Radkar and Lalitagauri Kulkarni, sponsored by YASHADA, Pune.
9. “Study on Capital Flows, Exchange Rate and Financial Stability”, Lalitagauri Kulkarni, sponsored by Reserve Bank of India.

### C) Funded by the Institute

1. “An Academic Citadel: A History of Gokhale Institute of Politics and Economics, Pune”, N. Benjamin.
2. “Determination of Water Subsidy in Pune”, Atreyee Sinha Chakraborty, jointly conducted by Gokhale Institute of Economics and Politics and Janwani.





## Publications of Faculty Members

### A) Studies /Articles published in National Journals:

1. Abhilash, T. (2013), Claiming Land and (Re) Claiming Identity: Adivasi Gothra Maha Sabha and Indigenous Modernity in Kerala, *Artha Vijnana*, Vol. LV, No. 2, June, pp. 201-227.
2. Benjamin, N. (2013), Gandhi and the Indian Christian community: An Overview, *Gandhi Marg*, Vol. 34, No. 4, January-March, pp. 399-424.
3. Benjamin, N. (2013), Socio-cultural impact of Christian Missionaries on Rajputana, *Indian Church History Review*, Vol. 47, No. 1, June, pp. 38-52.
4. Benjamin, N. (2013), The Great Plague as Reported by Native Newspapers, in *The Bombay Explorer*, No. 52, June, pp. 19-22.
5. Hari, K.S. (2013), Economic Development in India: An Inter-state Analysis, *Artha Vijnana*, Vol. LV, No. 2, June, pp. 125-148.
6. Jadhav, V.G. (2014), Application of Social Networking Services (SNS) for Library Collaboration: An Exploratory Study, *International Research: Journal of Library & Information Science*, Vol. 4, No. 1, March, pp. 121-129.
7. Jadhav, V.G. (2014), Role of Librarian in Intellectual Property Rights with Special Reference to Copyright Laws in India, *International Journal of Information Sources and Services*, Vol. 1, No. 1, July-August, pp. 138-144.
8. Nilakantan, Rahul and Samar K Datta (2013), Impact of Groundwater Recharge Structures in Saurashtra and Kutch, *Artha Vijnana*, Vol. 55, No. 2, June, pp. 198-209.
9. Nilakantan, Rahul and Saurabh Singhal (2013), Private Sector Union Wage Gap in the US: A Propensity Score Matching Approach, *Empirical Economics Letters*, Vol. 12, pp. 1275-1281.
10. Nilakantan, Rahul, Saurabh C Datta, Priyanjali Sinha, and Samar K Datta (2013), The Impact of Microfinance on Women Empowerment: Evidence from Eastern India, *International Journal of Development and Conflict*, Vol. 3, pp. 27-40.
11. Parchure, Rajas (2012), Economic Theory in Input-Output Framework, *Artha Vijnana*, Vol. LIV, No. 2, June, pp. 103-114.
12. Pole, Prasad, Anurag Asawa and Deepak Shah (2014), Securitization of Microloans: An Indian Perspective of the Innovation in Microfinance Industry, *The IUP Journal of Applied Finance*, Vol. 20, No. 1, January, pp. 62-75.
13. Reddy, Kalluru Shiva and D.S. Chary (2012), Base Rate System in Indian Banks- An Analysis, *Artha Vijnana*, Vol. LIV, No.4, December, pp. 449-474.
14. Reddy, Kalluru Shiva and V. Nirmala (2013), Profit Efficiency and its Determinants: Evidence from Indian Commercial Banks, *Journal of Transnational Management*, Vol. 18, No. 2, pp. 125-163.
15. Shah, Deepak (2013), Dynamics of Milk Production in Maharashtra: An Analysis of Spatial and Temporal Variations, *Agricultural Economics Research Review*, Vol. 26, Conference Number, July-Dec., Summary, p. 215.
16. Shah, Deepak (2013), Functional Dimensions and Management Efficiency of Agribusiness Co-operatives in Maharashtra: Assessment of a Successful Case, *Indian Journal of Agricultural Economics*, Vol. 68, No. 3, July-Sept, Summary, pp. 474-475.
17. Shah, Deepak (2013), Indian Dairy Industry: Analysis of Four Decades of Strategic Planning Based Development, *The Asian Economic Review*, Vol. 55, No. 1, April, pp. 133-152.

18. Shah, Deepak (2014), Pre- and Post-Harvest Losses of Pigeon Pea in Maharashtra: An Empirical Assessment, *Indian Journal of Economics and Development*, Vol. 10, No. 1, Jan.-March, pp. 1-9.
19. Shroff, Sangeeta, S.S. Kalamkar and Jayanti Kajale (2014), Emerging Retail Sector in Agricultural Marketing, *Productivity*, Vol. 54, No.4, Jan-March.
20. Thaware, Kailas C (2013), Unorganised Sector and Social Protection Policy in India, *The Indian Economic Journal*, Special Issue December.

#### B) Books

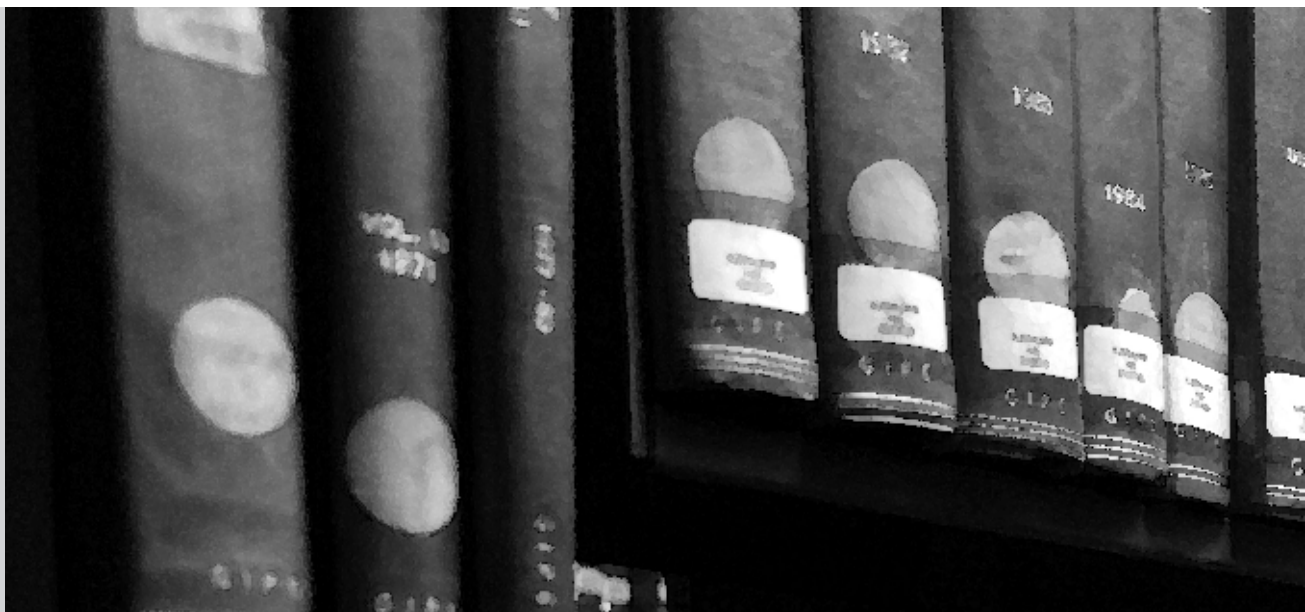
1. Somayajulu, V.V.N. (Ed.), *Indian Economy and Economic Reforms: Economy-wide Studies in Inter-Industry Frameworks*, Himalaya Publishing House, Mumbai, 2014.

#### C) Articles in Edited Books

1. Benjamin, N., Agriculture in Rajasthan (from AD 1947 to 2000), in D.P. Chattopadhyaya (General Edition), *History of Science, Philosophy and Culture in Indian Civilization* General, Vol. 5, Part 2, Section 2, *A History of Agriculture in India (from c. AD 1947 to the present)*, Lallanji Gopal and V.C. Srivastava (Eds.), Centre for Studies in Civilizations, New Delhi, 2014, pp. 1-14.
2. Jadhav, V.G., Towards Electronic Publishing: An Assessment of Indian Publishing Media, In Urs, Shalini R., Na, Jin-Cheon and Buchanan, George (Eds.), *Digital Libraries: Social Media and Community Networks*, Switzerland: Springer International Publishing, 2013, pp. 190-192.
3. Jadhav, V.G., Challenging Roles of Information Professionals in the Digital Environment, In S.A.N. Inamdar, Namita Khot, G. A. Buwa, Y. G. Jadhav, P. B. Bilawar, D B. Sutar (Eds.), *Parameters and Perspectives of LIS Education*, ABS Publication, Varanashi, 2014, pp. 437-440.
4. Jadhav, V.G., Changing Role of Librarians in New Media Age, in B.G. Mukhdayal, R.B. Khandare and S.J. Deshmukh (Eds.), *Advancement of Electronic Resources in Libraries*, Atharva Publications, Jalgaon, 2014, pp. 236-240.
5. Jadhav, V.G., Open Source Video Conferencing Software: Tool for Digital Reference Services in Libraries, In Dharmaraj K. Veer and Dattatraya T. Kalbande (Eds.), *Transformation of Knowledge Resources Centers in Collaborative Era*, Vol. 1, Agri-Bio Vet Press, New Delhi, 2014, pp. 578-590.
6. Rath, Prabhash Narayana, Strategies for Capacity Building in Social Science Libraries in India, In Sangam, S.L., Biradar, B.S. and Pujar, S.M. (Eds.), *Recent Trends in Library and Information Science: A Way forward for the Future*, Festschrift in Honour of Prof. P.V. Konnur, Bangalore, LIS Academy International, 2013, pp. 72-85.
7. Shroff, Sangeeta, How Remunerative is Indian Agriculture? Focus on Maharashtra, in *Agrarian Crisis in India: The Way Out*, K. Suman Chandra, V. Suresh Babu, Pradip Kumar Nath (Eds.), Academic Foundation, New Delhi, 2013.
8. **Thaware, Kailas C., Changing Consumption Pattern and Sustainable Development: Issues and Challenges, in Anil Thakur and Dalip Kumar (Eds.), *Sustainable Development in India: Issues and Approaches*, Regal Publication, New Delhi, 2013, pp. 3-19.**

#### D) Articles in Seminar Proceedings

1. Nandy, Debashish and Suddhasil Siddhanta, Spatial Pattern and Determinants of Fertility behavior in India, International Population Conference Proceedings, August 2013.
2. Suddhasil Siddhanta, Bridging the Gap: The Interplay between Fertility Transition and Birth Masculinity in India, International Population Conference Proceedings, August 2013.
3. Kulkarni, Shirish S and Nanaji Shewale, *Library Management and Open Source Software: A scenario*, In National Conference on Digital Libraries Reshaping Traditional Libraries into Next Generation Libraries, 2014, pp. 115-121.
4. Sonawane, Ajit and Prabhash Narayana Rath, Impact of Globalization on Staffing Pattern for Digital Libraries in Comparison with the traditional pattern, The Energy and Resources Institute, New Delhi, 2013, pp. 419-425.
5. Jadhav, V.G., and Y.G. Jadhav, Usability Evaluation of Social Science Databases among Faculty in Shivaji University, Kolhapur', In Jose, Antony (Ed.), *Proceedings of 59<sup>th</sup> ILA International Conference on Managing Libraries in the Changing Information World, Roorkee*, 2014, pp. 1007-1013,.
6. Jadhav, V.G. and M.N. Gaikwad, Challenges before Academic Library Professionals working in Maharashtra, in Khot, Divatankar, Bilawar, Sutar and Jadhav (Eds.), *Proceedings of National Conference on Changing Trends in Academic Libraries and Librarianship in Digital Environment, Barr. Balasaheb Khardekar Library and Department of Library and Information Science, Kolhapur*, 2014, pp. 378-381.
7. Bhosale Sunil Bhau, Agricultural Labour Wages in India, in *Indian Agriculture on the Eve of the Green Revolution*, edited by Dr. Anil Satre, Mohanrao Pantangrao Patil Mahavidyalaya, Borgaon, Walawa, District-Sagli 2014.
8. Bhosale Sunil Bhau, Fair Prices, Unfair Practices, *One India One People*, June 2013, pp. 9-13.



**E) Others (Working Papers, Mimeographs and Papers for publications, etc.)**

1. Parchure, Rajas, *Strategies for Increasing Agriculture Insurance Penetration in India*, Working Paper, No. 27, 2013, Gokhale Institute of Politics and Economics, Pune.
2. Ranjan Navneet, Anjali Radkar and Siddiqui Fawaz, A Study on Morbidity Pattern, Treatment Seeking Behaviour and Healthcare Expenditure among Urban Poor of Danapur Slums of Patna, India, to be published in *Indian Journal of Public Health Research and Development*.
3. Radkar, Anjali and Angeline Jeyakumar, Nutritional Status and Pattern of Food Intake during Pregnancy in India, to be published in *Demography India*.
4. Kulkarni, Lalitagauri, Health Inputs, Health Outcomes and Public Health Expenditure: An Evidence from the BRICS countries, *International Journal of Applied Economics*, accepted for publication.
5. Abhilash, T., Anthropological Solution to a Socio-economic Problem: A Critical Analysis of the Colonial Literature on Travancore Hill Tribes, *Journal of Social Action*, to be published in Volume 64, No. 4, October - December 2014.
6. Borkar, Prema, Forecasting of Potato Production in India using ARIMA Model, to be published in *International Journal of Humanities and Social Sciences*, Vol. 4, No. 2, 2014.
7. Borkar, Prema, Forecasting of Soybean Production in India using Season Time Series Model, to be published in *Agriculture for Sustainable Development*, Vol. 2, No. 1, 2014.
8. Borkar, Prema, Study on Modeling and Forecasting of Milk Production in India, accepted by *Green Farming*.
9. Suryawanshi, Suvarna Ashok, An Empirical Assessment of Participatory Model of Rural Sustainability: Tracing the Roots of Central Government Policy Aiming to Develop One Ideal Village per Parliamentary Constituency, accepted for publication by *Asian Journal of Science and Technology*.



## Participation in Conferences, Seminars, Workshops, Lectures, Involvement in Different Committees and other Academic/ Administrative Activities

### Rajas Parchure

- Presented a paper “Fisher's Equation: Some Methodological Doubts” at the RBI Professors' Conference, RBI, Mumbai, April 2013.
- Presented a paper “Existence of equilibrium in a monetary economy: An I-O perspective” at 21st International Input-Output Conference in Kitakyushu, Japan, July 9-12, 2013.
- Presented a paper “Effect of Banking Transactions Tax on Financial Transactions” at Arthakranti Seminar, December 12, 2013.
- Presented a paper “Inequality and Income Distribution” at Department of Economics, Bombay University, Economics Conference, March 2014.
- Organized XVII National Seminar of Input-Output Research Association (IORA), India, January 31st – February 2nd, 2014 at the Institute.
- Organized Economics Conclave 2014, Indian Economy: Performance and Challenges Ahead, February 14-15, 2014, at the Institute.
- Organized Conference on Illicit Finance Flows – Paralyzing India's Development, March 22, 2014 at the Institute.
- Organized Conference on Artha Kranti BTT, December 12, 2013.
- Organized Refresher Course on Input-Output Techniques for officers of Central Statistical Organization.
- Served on Mandatory Committees of Gokhale Institute of Politics and Economics including Board of Management, Board of Studies, Academic Council, Building Committee, Finance Committee, Investment Committee, etc.
- Served as Officiating Director of Gokhale Institute of Politics and Economics, Pune.
- Prepared and submitted the development and expansion plan of the Institute under the UGC XII Plan.

- Taught “Agricultural Risk Management and Insurance” in M.A. (Agri-business Economics) course, “Linear Economics”, “Monetary Macro Economics” and “Financial Economics” in M.A. (Economics) course and “Investment Management” in GIPE-NSE Programme.

### Deepak Shah

- Attended international events: (1) International Symposium on Frontier Research Themes on Service Sector Support for Food Value Chain Development in Developing Countries, (2) Workshop on Rice Value Chain Development in China, India, Laos and Vietnam, (3) Workshop on Agri-food Value Chain Financing and Energy in Bangladesh, Brazil, China, India and Cambodia, (4) Methodology and Planning Workshop for the Studies of Value Chain Financing and Energy, held at Renmin University, Beijing, China during April 10-12, 2013, organized by the International Food Policy Research Institute, New Delhi.
- Participated in the 73rd Annual Conference of the Indian Society of Agricultural Economics, Hyderabad, December 18-20, 2013, and presented a paper titled “Functional Dimensions and Management Efficiency of Agribusiness Cooperatives in Maharashtra: Assessment of a Successful Case”.
- Participated in the 21st Annual Conference of the Agricultural Economics Research Association (India), in Srinagar, September 10-12, 2013, and presented a paper titled “Dynamics of Milk Production in Maharashtra: An Analysis of Spatial and Temporal Variations”. Also acted as Rapporteur of the Technical Session – II on 'Agricultural Growth and Natural Resources – Hills and Irrigated'.

- Participated in the Eighth International Cooperative Alliance Asia Pacific Regional Research Conference organized by the University of Mysore, Karnataka, 29-30 November 2013, and presented paper titled “Assessing Marketing Management Efficiency through Cooperative Leadership and Governance – A Case Study”.
- Attended a meeting to finalize methodology and survey area for the project titled “Innovative Financing for Agriculture and Food Value Chains in India”, organized by the International Food Policy Research Institute at Renmin University, Beijing, China, April 12, 2013.
- Guided a Ph.D. Student as the Principal Guide.
- Guided three students of M.A. (Agribusiness Economics) as the Principal Guide.
- Worked as a referee for Indian Journal of Agricultural Economics, Indian Journal of Agricultural Marketing, Artha Vijnana, etc.
- Attended conference Agri Corp 2013- Making Agriculture Remunerative organized by Bombay Chamber of Commerce and Industry, Mumbai, October 24- 25, 2013.
- Attended the 27th National Conference on Agricultural Marketing in Dharwad, December 18-20, 2013 and presented a paper titled “Export Potential of High Value Crops – Cooperatives can Help (Case of pomegranate marketing in Maharashtra)”.
- Attended meetings on “Improving Agricultural Growth Rate in Maharashtra”, September-December 2013 as a member of the Working Group.
- Provided guidance to a Ph. D student.
- Worked as Officer-in-charge of the AERC.

#### **Sangeeta Shroff**

- Participated in the silver jubilee conference on “The State, the Market and the Agripreneurs” on April 3-5, 2013 organized by Indira Gandhi Institute of Development Research, Mumbai. Also acted as a resource person for Panel Discussion “Agricultural Policies-Ensuring the short-term does not derail the long run”.
- Participated in National Conference on “Innovative agri-credit products and Value Chain financing” organized by CAB, Reserve Bank of India, Pune, June 3-4, 2013. Also acted as a resource person for Panel Discussion on “Policy Interventions”.
- Attended National Conference on “Political Response to Economic Restructuring” August 2-3, 2013, Indian School of Political Economy, Pune.
- Resource Person for Customized Programme on Agrifinancing for officers of Dena Bank organized by CAB, Reserve Bank of India, Pune, and delivered a lecture titled “Potential for Agri-Produce Exports-Government Policies”, August 19- 23, 2013.

#### **Kailash C. Thaware**

- Presented a paper on “Channeling Rural Employment Structure and Patterns in India” at the Indian Society of Labour Economics (ISLE), Delhi, December 16-18, 2013.
- Delivered lectures on Research Methodology and Application of Econometrics in Social Science Research for Ph.D. students sponsored by Indian Council of Social Science Research, Karnataka University, Dharwad, September 23-24 2013.
- Guided two Ph.D. Students.

#### **Jayanti Kajale**

- Organized state level one day seminar on Water-related Issues in Maharashtra on July 2nd, 2013 and prepared its proceedings.
- Attended the National Conference on Innovative Agri-Credit Products and Value Chain Financing organized by the College of Agricultural Banking, RBI, Pune on June 3-4, 2013.
- Participated in Prof. V. M. Dandekar Memorial Seminar organized by Indian School of Political Economy, Pune, August 2-3, 2013.

- Attended conference on Making Agriculture Remunerative organized by Bombay Chamber of Commerce and Industry, Mumbai, October 24-25, 2013.
- Attended National Workshop on The Future of MGNREGA in the Emerging Context of Rural India: Learnings From Selected States, organized by GIDR, Ahmedabad and ICRISAT, December 10-11, 2013 and made a presentation on Status of NREGA in Maharashtra: Realities and Lessons.
- Lectured participants of Executive Development Programme on Construction Project Management organised by NICMAR Pune and ADB at NICMAR, August 13, 2013 on Policy Issues and Challenges in Agribusiness.
- Participated in a discussion on drought and water issues in Maharashtra, Akashwani (Pune) Radio broadcast, July 2013.

#### **Prashant Bansode**

- Presented a paper “Cultural Capital and Exclusion of SC/ST in Higher Education”, National Seminar on Higher Education in India and the Marginalized: A critique of Access, Equity and Quality in the Global Context, Tata Institute of Social Sciences, Mumbai, March 3-4, 2014.

#### **Anjali Radkar**

- Attended workshop for Qualitative data analysis software – Atlas-ti.
- Delivered lectures on Applied Research Methodology for students of Master of Public Health and M.Sc. Health Sciences in Interdisciplinary School of Health Sciences, University of Pune, December 2013.
- Worked for data collection for the study - Reversing Son Preference: A Study of Contributory Factors.
- Guided three Ph.D. Students as Supervisor and one student of M.A. Agribusiness Economics for dissertation.

#### **Rahul Nilakantan**

- APS Invited Session, 88th Annual Conference, Western Economic Association International, Seattle, “Beyond Size: The Rise in Power of the Transaction Sector in India”, 2013.

#### **Anurag Asawa**

- Delivered lectures as resource person in Ph. D coursework, on “Statistical Inferences” and “Interpretation of SPSS/Excel Output”, Symbiosis International University, Pune, Sept. 21-29, 2013.
- Delivered lectures on “Computer Application in Economics” at Department of Economics, Central University of Rajasthan, October 5-11, 2013.
- Taught one semester course on “Managerial Economics” for PGDF at Kirtoskar Institute of Advanced Management, Pune, July-September 2013.
- Delivered lectures as resource person in Ph D course work on the topic “Violation of assumption of CLRM” at Department of Economics, University of Rajasthan, Jaipur, April-May 2013.
- Guided Ph.D. student on the problem of Micro Finance in India.
- Worked as a Coordinator, GIPE, Pune - Georg-August University, Gottingen, Germany (GAUG) Faculty and Student Exchange Programme.

#### **Vini Sivanandan**

- Attended the Orientation Workshop on 'Evaluating the District PIPs' organised by the Ministry of Health and Family Welfare, National Institute of Health and Family Welfare, New Delhi, August 12-14, 2013.

#### **K.S. Hari**

- Presented a paper on Kerala's Development and Gujarat's Growth: Lessons to be learned from each other, National Seminar on Contemporary Indian Economy: Macroeconomic Instabilities and Debates, Department of Economics, Government College, Kasaragod, Kerala, November 29-30, 2013.
- Presented a paper on Kerala's Human Development in a comparative perspective: Past Attainment and Future Challenges, National Seminar on Kerala's Development Attainment in the New Millennium, Government Victoria College, Palakkad, Kerala, November 1, 2013.
- Delivered Keynote Address on Two Day UGC Sponsored National Workshop on 'Econometrics with Computer Applications', Department of Economics, Shivaji University and CSIBER, Kolhapur, February 26, 2014.
- Delivered lecture on Kerala's Development Experience at the Department of Economics, University of Calicut, November 5, 2013.
- Guided Masters' Thesis of three MA (Economics) students and one MA (Financial Economics) student of the Institute.
- Worked as Seminar coordinator.
- Worked as Co-ordinator of GIPE Economics Conclave 2014, February 14-15, 2014.
- Worked as Co-ordinator, Conference on "Illicit Finance Flows: Paralyzing India's Development", March 22, 2014.

#### **Naresh Bodkhe**

- Co-ordinated the Third Conference of IHEPA held on January 6-7, 2014 organized at the Institute.

#### **Debasish Nandy**

- Presented paper at XXVII IUSSP International Population Congress, organized by Korean National Organizing Committee (NOC) at Busan, South Korea, August 26-31, 2013.
- Refereed articles for Artha Vijnana, Asian Population Studies, etc.

#### **K.S. Reddy**

- Presented a paper at Fourth International Conference on Applied Econometrics on March 20-21, 2014 at IBS, Hyderabad.
- Presented a paper at Golden Jubilee Conference of The Indian Econometric Society (TIES), conducted by TIES and IGIDR, IGIDR, Mumbai, December 22-24, 2013.
- Participated in 'A Round Table on Financial Markets: Future Perspectives' organized by Mulshi Group of Institutes, Pune, February 8, 2014.
- Delivered lecture on Capital Markets for students of Chanakya Mandal Pariwar, Pune.
- Taught courses in NSE and GIPE –PGED-FM - 2013-14 programme.

#### **Atreyee Sinha Chakraborty**

- Presented a paper on "A comparison of welfare consequences of Tariff & Non-Tariff Barriers in the Present Global Trade Scenario", 17th National Seminar of Input output Economics: Application for Planning, Growth and Development issues in Indian Economy, held at the Institute from January 31-February 2, 2014.
- Presented a paper on "Non -Tariff Barriers and Protectionism-a theoretical study", 34th Annual conference (National level) of Bangiya Arthaniti Parishad, Department of Economics, Lady Brabourne College, Kolkata, February 22-23, 2014.

#### **Suddhasil Siddhanta**

- Presented a paper at XXVII IUSSP International Population Congress, organised by Korean National Organizing Committee (NOC) at Busan, South Korea, August 26-31, 2013.
- Taught the course Computer Applications for Economic Analysis for MA students at the Institute.
- Guided a Ph. D Student as co-supervisor on the problems of urban poverty and vulnerability, and another as Principal Guide on some aspects of returns to education among the rural females in India for Masters' Thesis.



#### **Abhilash T.**

- Presented a paper Anthropological Solution to socio-economic problem of A Critical Analysis of the Colonial Literature on Travancore Hill Tribes” First South Asian History Conference, Department of History, Punjabi University, Patiala, October 25-27, 2013.

#### **Lalitagauri Kulkarni**

- Guided three Ph. D students and two MSc Students for research.

#### **Prema Borkar**

- Presented a paper on Study to determine changes in Cropping Pattern in Maharashtra in Silver Jubilee Convention – 2014 Maharashtra Society of Agricultural Economics, Department of Agricultural Economics and Statistics, Dr. Panjabrao Deshmukh Krishi Vidyapeeth, Akola held on February 1–2, 2014.
- Presented a paper on Use of the ARIMA model for forecasting Soybean Area and Production in India in SOYCON – 2014 International Soybean Research Conference, Indore, February 22–24, 2014.
- Attended PGWM Regional Workshop held at YASHADA, Pune, March 10–11, 2014.

#### **Nanaji Shewale**

- Attended International Conference on 'Knowledge Modeling and Knowledge Management' at Documentation Research and Training Centre, Indian Statistical Institute Bangalore, November 20-21, 2013, and presented a paper on Knowledge Management Tools used to build Digital Library: A case study of Directory of Open Access Repositories (DOAR).
- Attended an international conference on Electronic Thesis and Dissertations 2013 organised by University of Hong Kong Libraries, September 23–26, 2013 and gave oral presentation on “Batch import of metadata and corresponding bit-streams in DSpace”.

- Attended conference on IASLIC XXIX- All India Conference 2013 on Role of Library Associations in India in Modern Age organised by National Institute of Virology, Pune and IASLIC Kolkata, December 26–29, 2013.
- Invited as resource person for the three day national workshop on Design and Development of Digital Libraries using DSpace, organised by Anjuman-I-Islam's Kalsekar Technical Campus, Navi Mumbai, February 21–23, 2014.
- Delivered four lectures on Bibliographic standards for UNIMARC, CCF, MARC21 and its application to KOHA and Installation of DSpace and KOHA using LIBLIVE CD at Refresher Course on Changing Dimensions of Librarianship organised by Department of Library and Information Science, Sant Gadge Baba Amravati University, Amravati, December 20-21, 2013.
- Invited as chairperson for a technical session at the National Conference on Changing Trends in Academic Librarianship in Electronic Environment (CTALEE-2013) organised by Department of Library and Information Science, C T Bora College, Shirur, Dist. Pune, and delivered a talk on 'World Digital Libraries: A current scenario', December 13, 2013.
- Invited as resource person for a workshop on Koha: Library Management System, Shri Guru Gobind Singhji Institute of Engineering and Technology, Nanded, December 5-7, 2013.
- Delivered two lectures on Machine Readable Cataloguing (MARC) and Library Automation Using Koha, at the UGC-sponsored Refresher Course on New Trends and challenges in Library Management organised by Department of Library and Information Science, University of Pune, Pune, December 2–3, 2013
- Delivered two lectures on Library Automation at the State Level Seminar on Library Automation organised by BPHE Society's Institute of Management Studies, October 24, 2013.

- Delivered four lectures on Library Automation using Koha, in UGC-sponsored Refresher Course in Library and Information Science organised by Department of Library and Information Science, Rashtrasant Tukadoji Maharaj Nagpur University, Nagpur, July 25–26, 2013.
- Guided an M Phil Student at Tilak Maharashtra Vidyapeeth, Pune.

#### **P.N. Rath**

- Delivered a lecture on Literature Search, Review and Referencing at ICSSR-sponsored Workshop on Research Methodology, Pravin Gandhi College of Law, Mumbai, October 18, 2013.
- Delivered two lectures: (i) Literature Search, Review and Referencing, and (ii) Open Access Movement in Social Sciences, in the UGC-sponsored Refresher Course in Library and Information Science, Dept. of Library and Information Science, University of Pune, December 2-3, 2013.
- Guided one M. Phil. student in Library and Information Science from YCMOU, Nashik.
- Guided three Ph.D. students in Library and Information Science in Tilak Maharashtra University, Pune.
- Worked as Officer on Special Duty of the Institute.

#### **Vilas Jadhav**

- Presented a poster paper “Towards the Electronic Publishing: An Assessment of Indian Publishing Media”, 15th International Conference on Asia-Pacific Digital Libraries, ICADL 2013, Bangalore, December 9-11, 2013.
- Participated in IASLIC 29th All-India Conference on Role of Library Associations in India in Modern Age, Information Centre and Library, National Institute of Virology & Indian Association of Special Libraries and Information Centres, Pune, December 26-29, 2013.

- Presented a paper on “Usability Evaluation of Social Science Databases among Faculty in Shivaji University, Kolhapur”, 59th ILA International Conference, Roorkee, February 22-24, 2014.
- Participated in National Conference – 2014 on Changing Trends in Academic Libraries and Librarianship in Digital Environment organized by Barr. Balasaheb Khardekar Library and Department of Library and Information Science, Shivaji University, Kolhapur, February 25-26, 2014.
- Attended two-day workshop on Research Methodology organized by Department of Library and Information Science, University of Pune, Pune, July 18-19, 2013.

#### **V.V.N. Somayajulu**

- Coordinated Second Refresher Course on Module 1: Construction of Regional Input-Output Flow Tables and Capital Coefficients Tables of Fixed, Working and Replacement and Service Life Capital Goods in States / UTs of India, sponsored by CSO, MoSPI, New Delhi, February 17–22, 2014.
- Coordinated 17th National Conference of Input-Output Research Association (IORA), India, sponsored by Planning Commission, January 31– February 2, 2014.

#### **N. Benjamin**

- Participated in the First South Asian History Conference and presented a paper titled “Criminal tribes of Bombay Province: Their settlement and emancipation”, organized by Department of History, Punjabi University, Patiala, October 25-27, 2013
- Participated in the Indian History Congress and presented a paper titled “From steam drive to electric drive: Cotton textile industry of Bombay”, organized by Ravenshaw University, Cuttack, December 28-30, 2013
- Presided over the annual seminar of the students of Poona College of Arts, Science and Commerce, Pune, January 21, 2014.

### H.M. Desarda

- Made presentation in panel discussion at the First National Conference on Energy and Environment (NC2E-2014), organized by School of Energy Studies, University of Pune, February 20-22, 2014.
- Delivered a lecture on Issues and Perspectives of Ground Water Management in Maharashtra, Advanced Centre for Water Resources Development and Management at YASHADA, Pune, March 10, 2014.
- Delivered a lecture on The Challenges and Opportunities of Sustainable Development of Energy in India, YASHADA, March 14, 2014.
- Addressed a meeting of students and teachers of Swami Ramanand Teerth Marathwada University, Nanded on The Challenges of Equitable and Sustainable Development in Maharashtra, March 25, 2014.
- Presented a paper on Drought Mitigation and Water Resources Planning and Policy of Maharashtra State at the Department of Economics, Shivaji University, Kolhapur, March 26, 2014.
- Presented a Paper (jointly with Mark Lindley) on “Amartya Sen and Ecological Economics”, Department of Economics, Shivaji University, Kolhapur, March 27, 2014.

### Sunil Bhau Bhosale

- Participated in Orientation Programme for Research Scholars and Faculty Members belonging to SC and other marginalized groups, organised by CRRiD, Chandigarh, Punjab, September 16-20, 2013.
- Participated in workshop on Effective Technique for Research Paper Writing and Publication organized by Sinhgad College of Engineering, Vadgaon, Pune, with University of Pune, October 21-23, 2013.
- Participated in Building Capacity Programme for Faculty in Social Sciences Indian Institute of Education, Pune, January 6-1, 2014.

### Suvarna Suryawanshi

- Attended PGWM Regional Workshop held at YASHADA, Pune, March 10–11, 2014.



## **Election / Nomination to Professional, Educational and Non-academic bodies, etc.**

### **Rajas Parchure**

- External Expert, Board of Studies, Department of Economics, Fergusson College, Pune.
- Member, Board of Governors, YASHADA, Pune.
- Member, Advisory Council, Yashwantrao Chavan School of Rural Development, Kolhapur.
- Member, Governing Council, Department of Economics, University of Mumbai.
- Chairman, Economic Environment Committee, Maharashtra Chamber of Commerce, Industrial and Agriculture, Pune.

### **Sangeeta Shroff**

- Elected as an Affiliate Fellow of the Indian School of Political Economy, Pune.
- Nominated as Vice-President of Indian Society of Agricultural Marketing for a period of two years.
- Member of Working Group on Improving Agricultural Growth Rate in Maharashtra.

### **Deepak Shah**

- Member of Editorial and Reviewer Board of the Journal Business Perspectives and Research.
- Elected as Executive Committee member of the Society of Economics and Development, Punjab Agricultural University, Ludhiana, for the year 2014 (January-December).

### **Kailash Thaware**

- Invitee member, General Body, Maharashtra State Rural Livelihoods Mission (MRLM), Department of Rural Development, Government of Maharashtra.
- Member, Advisory Board, MRLM.

### **Prashant Bansode**

- Member, Research and Recognition Committee, Faculty of Moral and Social Sciences, Tilak Maharashtra Vidyapeeth, Pune.



## Seminars/Conferences/Workshops Organised at the Institute

During the academic year 2013-2014, the Institute organized the following seminars and workshops:

**1. Third Conference on Health for All to Universal Health Coverage: Journey so far and Challenges Ahead, January 6-7, 2014**

The conference was organized in collaboration with Indian Health Economics and Policy Association (IHEPA) and Azim Premji University. 46 papers were presented at the conference on themes that included (1) Health, poverty and development, (2) Access and utilization of health care services, (3) Maternal and child health, (4) Health and nutrition, (5) Health care in Maharashtra, (6) Financing health care in India, (7) Health inequality, (9) Healthcare of elderly, etc.

**2. 17<sup>th</sup> National Conference of Input-Output Research Association (IORA), January 31-February 2, 2014**

GIPE and Input-Output Research Association, India, organized the 17<sup>th</sup> National Conference

of IORA with the financial support of the Planning Commission. Inaugural Session was chaired by the Officiating Director, GIPE. Prof. Ranganath Bharadwaj, President, IORA India, delivered the presidential address. About 45 experts participated in the Conference.

**3. Second Refresher Course on Construction of Regional Input-Output Flow Tables, February 17-22, 2014**

The Refresher Course contained Technical Sessions on Construction of Regional Input-Output Flow Tables and Capital Coefficients, Tables of Fixed, Working and Replacement in Service Life Capital Goods in states / UTs of India. The Course was organized for ISS officers of the States Directorates, senior officers in States and Central Governments, particularly CSO, NAD officers and Faculty from Universities/Research Institutes.



**4. Seminar on Drought Mitigation and Water Resources Management, July 2, 2013**

The Institute hosted a Seminar on drought mitigation and water resources management in Maharashtra, on July 2, 2013. Hon'ble Chief Minister of Maharashtra Shri Prithviraj Chavan, in his inaugural address underscored the significance of decentralized water storages and use of drip methods in irrigating crops such as sugarcane. Expressing concern at the distortion in water-use priorities across the crops, regions and sectors, Shri Chavan called for a sustainable approach to water usage.

During the course of day-long discussions academicians, policy-makers, administrators and social activists put forth their views on the shortcomings and perils of existing policies, and ways and means to encourage sustainable and equitable management of water resources in the State. The various working groups also made valuable suggestions to the government authorities who participated in the seminar.

**5. Residential Workshop on Internalizing the Corporate Social Responsibility and Sustainable Development and Management Development Programme for Officers C\SCAs, September 20-21, 2013**

The National Backward Classes Finance and Development Corporation, New Delhi requested the Institute to organise a residential workshop for senior officials of State Channelizing Agencies, i.e., Maharashtra State Other Backward Classes Finance and Development Corporation Ltd. and Vasant Naik Vimukta Jatis and Nomadic Tribes Development Corporation Ltd. on internalising the Corporate Social Responsibility, Sustainable Development and Management Development Programme. It was organised on September 20-21, 2013. The themes of the workshop were: (a) internalising corporate social responsibility and sustainable development for social sector organisations, (b)

project appraisal, (c) maintenance of accounts, loans and recovery mechanism, (d) marketing of artisan products, (e) drafting agreements and MoUs, and (f) skill development and capacity building of artisan communities. The experts from their respective fields were invited as resource persons.

**6. Conference on "Illicit Finance Flows: Paralyzing India's Development"**

organized jointly with Academy of Political and Social Studies, March 22, 2014

**7. Economics Conclave 2014 -- Indian Economy: Performances and Challenges Ahead, February 14-15, 2014.**

**8. Discussion Session/Workshop on "Banking Transaction Tax for India"**

with Artha Kranti and MKCL, December 21, 2013.

**9. EconLit Database Training, May 2, 2013**

The GIPE Library organised on May 2, 2013, a training programme on 'ECONLIT', the American Economic Association's electronic bibliography of journal articles, books, book reviews, collective volume articles, working papers and dissertations. The programme was attended by more than 30 participants.

**10. Workshop on Open Data and Open Development, May 17, 2013**

The GIPE Library organised a Workshop on Open Data and Open Development on May 17, 2013 with the financial support of the World Bank. The Workshop was attended by over 40 participants.

**11. National Level Workshop on Library Automation using Koha Open Source Software, August 9-11, 2013**

The Library organised a National Level Workshop on Library Automation using Koha Open Source Software on August 9-11, 2013. It was attended by about 40 participants.

The following seminars were held during 2013-2014:

No	Date	Speaker	Title
1	9.4.2013	<b>Ratnakar Tripathy</b> , Sr. Research Fellow, Asian Development Research Institute, Patna	“Inclusive Bihar? – Governance, development and migration”
2	28.6.2013	<b>Pramod Reddy</b> , Advocate, Supreme Court	“Issues in Law and Economics”
3	26.7.2013	<b>Aradhana Agrawal</b> , Associate Professor, University of Delhi	“Anti- dumping”
4	26.7.2013	<b>R. Nagarajan</b> , IGIDR, Mumbai	“India’s Dream Run, 2003-2008”
5	6.9.2013	<b>Rajas Parchure</b>	“Existences of equilibrium in a money economy”
6	20.9.2013	<b>Nanasaheb B. Patil</b> , IAS, Ex. ACS, Government of Maharashtra	“Indian agriculture and agrarian crisis”
7	19.10.2013	<b>Aneeta Gokhale Benninger</b> , Executive Director, Professor of Sustainable Development Planning, Centre for Development Studies and Activities	“How to develop analytical tools and apply them while making decisions”
8	28.11.2013	<b>Roberto Zaghera</b> , Former World Bank Country Director to India	“Global economic prospects: structural issues and short-term perspectives”
9	10.1.2014	<b>Mark Lindley</b> and <b>H.M. Desarda</b>	“Amartya Sen and ecological economics”
10	17.1.2014	<b>Rajesh D. Mudholkar</b> , Associate Member, Institute of Cost Accountants of India	“Hidden flaws in corporate finance cries”
11	24.1.2014	<b>Nanasaheb B. Patil</b> , IAS, Ex. ACS, Government of Maharashtra	“Agribusiness ventures in Maharashtra”

## Academic Programmes (M.A., Ph.D.)

The Institute conducts following academic programmes.

- A) M.A. (Economics)
- B) M.A. (Financial Economics)
- C) M.A. (Agri-business Economics)
- D) Ph.D. (Economics, Agricultural Economics, Population Studies)
- E) Certificate Course in Computer Applications for Economic Analysis

### A) M.A. Economics Programme:

During the year 2013-14, 73 students were enrolled in the M.A. Economics programme. During the year, the following faculty members taught courses for the Programme.

#### Semester: July-Nov. 2013

Sr. No.	Subject	Faculty
1	A01: Microeconomics I	Ms. Atreyee Sinha Chakraborty and Dr. Debasish Nandy
2	A03: Macroeconomics	Dr. Pradeep Apte
3	A05: Econometrics I	Dr. Anurag Asawa
4	A07: Political Economy of India's Development	Dr. K.S. Hari
5	Q01: Basic Mathematics & Statistics	Ms. Suchitra Chitrao and Ms. Singhvi
6	B09: Financial Institutions and Markets	Dr. Kailash Thaware
7	B10: Population Studies	Dr. R. Nagarajan and Ms. V. Sivanandan
8	B13: Financial Economics	Ms. Amruta Borwankar Sharma
9	B14: Law and Economics I	Mr. Avinash Ganu and Dr. Pradeep Apte

#### Semester: Dec. 2013-April 2014

Sr. No.	Subject	Faculty
1	A04: Monetary Macroeconomics I	Prof. Maniklal Adhikary and Mr. Naveen Sharma
2	A06: Economics of Development	Dr. Debasish Nandy
3	A09: Econometrics II	Dr. Vijay Mohan Pillai and Prof. R. Krishnan
4	A12: National Income	Mr. Azhar Khan and Dr. Ajit Gaikwad
5	B04: Industry: Organization, Structure and Problems	Dr. Sanjay Basu and Ms. Rupa Korde
6	B07: Economics of Labour	Dr. Suddhasil Siddhanta
7	B22: Economic Sociology	Dr. Prashant Bansode
8	B23: Law and Economics II	Shri. Avinash Ganu and Dr. Pradeep Apte

Under Student Exchange Programme between Georg-August University (University of Gottingen), Germany, and the Institute, three students from Gottingen University, studied at GIPE while one student of GIPE studied at the University of Gottingen for one semester.

Under Student Exchange Programme between Ontario Universities and the Institute, one student studied in Canada for one semester.



**B) M.A. Financial Economics:**

During the year 2013-14, 83 students were enrolled in the M.A. Financial Economics programme. During the year, the following faculty members taught courses for the Programme.

**Semester: July - November 2013**

Sr. No.	Subject	Faculty
1	FE-A-01: Macroeconomics and Finance	Dr Lalitagauri Kulkarni
2	FE-A-02: Accountancy and Financial Statements Analysis – I	Mr. Rahul Gole
3	FE-A-04: Financial Institutions and Markets	Dr K. Shiva Reddy
4	FE-A-06: Corporate Finance and Capital Budgeting	Ms Sayali Mahashur
5	Basic Mathematics	Ms. Suchitra Chitrao
6	Basic Statistics	Ms. Sneha Shingvi
7	FE-A-08: Computational Finance	Ms. Ruby R Pravin
8	FE-A-10: Financial Econometrics – II	Prof Neeraj Hatekar.
9	FE-A-11: International Finance	Dr. S. K. Vaze
10	FE-A-12: Security Analysis and Portfolio Management – II	Mr. Prasad Kalbhande

**Semester: December 2013 - April 2014**

Sr. No.	Subject	Faculty
1	FE-A-07: Security Analysis and Portfolio Management - I	Ms Sayali Mahashur
2	FE-A-09: Financial Econometrics -I	Dr. B. Kamaiah & Mr. Akshay Dhume
3	FE-A-13: Derivatives	Dr. Lalitagauri Kulkarni
4	FE-B-07: Mergers and Acquisitions	Mr. Madhav Ganpule
5	FE-B-08: Project Appraisal and Finance	Mr. Vidyadhar Phadke
6	FE-A-05: Financial Regulation	Dr. K. Shiva Reddy
7	FE-A-02: Accountancy and Financial Statements Analysis –II	Mr. Atul Kulkarni
8	FE-B-05: Investment Banking	Ms. Sayali Mahashur
9	FE-B-10: Financial Engineering & Structured Finance	Mr. Sameer Gunjal
10	Financial Modelling with Excel	Mr. Sameer Gunjal

**C) M.A. Agribusiness Economics:**

During the year 2013-14, 63 students were enrolled in the M.A. Financial Economics programme. During the year, the following faculty members taught courses for the Programme.

**Semester: July - November 2013**

Sr. No.	Subject	Faculty
1	AE-A07: Agricultural Finance	Ms. Nisha Bharati
2	AE-A08: International Trade in Agriculture	Dr. Jayanti Kajale
3	AE-B03: Agro-Processing Industries	Dr. S.M. Naikare
4	AE-B05: Supply Chain in Agriculture	Dr. Dilip Kajale
5	AE-A01: Indian Agricultural Economics	Dr. Deepak Shah, Dr. Sangeeta Shroff
6	AE-A02: Microeconomics	Dr. Rahul Nilakantan
7	AE-A03: Macroeconomics	Dr. K.S. Hari
8	AE-A04: Statistics	Dr. A.P. Kulkarni
9	Basic Mathematics and Statistics	Ms. Suchitra Chitrao and Ms. Sneha Shingvi

**Semester: December 2013 - April 2014**

Sr. No.	Subject	Faculty
1	AE -A10: Agricultural Risk Management and Insurance	Prof. Rajas Parchure and Prof. Kolli Rao
2	AE -A11: Strategic Agro-Food Marketing	Dr. Dilip Kajale
3	AE -B02: Agricultural Cooperatives	Prof. Paranjothi and Prof. Anil Karanjkar
4	AE -B04: Organizational Structures in Agricultural Production	Prof. Kanish Debnath, Dr. Samar Datta
5	AE -A05: Farm Management Economics	Prof. Deepak Shah, Dr. Rahul Nilakantan, Prof. Tilekar
6	AE -A06: Agricultural Policy Framework in India	Dr. Sangeeta Shroff
7	AE -A09: Econometrics	Shri Akshay Dhume
8	AE -A12: Agribusiness Accounting	Prof. Rahul Gole
9	Basic Mathematics and Statistics	Ms. Suchitra Chitrao and Ms. Sneha Shingvi

## 20<sup>th</sup> Convocation

The 20<sup>th</sup> Convocation of the Institute was held on February 1, 2014. Prof. Eric Dietzenbacher, President, International Input-Output Association, was the Chief Guest.

At the 20<sup>th</sup> Convocation, four successful students were awarded Ph.D degree, 30 successful students from the 2011-2013 and 2010-2012 batches were awarded M.A. (Economics) degree, 44 successful students from the 2011-2013 batches were awarded M.A. (Financial Economics) degree and 29 successful students from the 2011-2013 batch were awarded M.A. (Agribusiness Economics) degree.

### Students' Achievements and Awards

- **Pandurangi Prize:** Miss Parul Matharu, who secured first rank with an 'A+' grade in the M.A. (Economics) Examination, held in April 2013, was awarded the Pandurangi Prize.
- **Late Professor M.V. Namjoshi Prize:** Miss Parul Matharu, who secured first rank with an 'A+' grade in the M.A. (Economics) Examination, held in April 2013, was awarded the Late Professor M.V. Namjoshi Prize.
- **R.M. Agnihotri Prize:** Miss Parul Matharu was awarded R.M. Agnihotri Prize for securing the highest marks in the course Economics of Development.
- **Prof. B.G. Bapat Prize:** Miss Kanika Bhatnagar was awarded B.G. Bapat Prize for securing the highest marks in the course International Economics.
- **The Allianz Global Foundation Scholarship for Meritorious Students:**
  - Prof. D.R. Gadgil prize** awarded to Miss Mukta Pushkar Kanvinde, who secured first rank with an 'A+' grade in the M.A. (Financial Economics) examination.
  - Prof. V. M. Dandekar prize** awarded to Miss Simran Kaur, who secured first rank with an 'A+' grade in the M.A. (Agribusiness Economics) examination.



Prof. Erik Dietzenbacher presents Degrees at the 20th Annual Convocation 2014



Prof. Rajas Parchure welcomes Shri Prithviraj Chavan, Chief Minister of Maharashtra



Shri Prithviraj Chavan, Chief Minister of Maharashtra, addresses the meet on Water Resources Management

## Ph.D. Students

42 students were enrolled in the Ph.D. programme at the Institute during the year under report.

Sr. No	Name of the Students	Principal Supervisor	Thesis Title
1	Mr. Fr. U.R.F. Rodrigues	Dr. B.B. Mohanty	Problems of the Elderly in Goa : A Sociological Study
2	Mr. Milind Desai	Prof. Rajas Parchure	An Exploration of Money and Interest in the Theory of Value
3	Mr. Naresh Shirodkar	Prof. Rajas Parchure	Customer Perception and Operational Risks Towards Traditional and E-Bank Products of Selected Banks in Goa : An Empirical Study
4	Ms. Sumoni Mukherjee	Dr. R. Nagarajan	Social Determinants of Child Immunization in Rajasthan, Orissa and Madhya Pradesh states of India: Special Focus on Ethnicity
5	Mr. Hiralal Nayak	Dr. R. Nagarajan	Young Married Women's Space in Determining their Reproductive and Infant Health: A Study of Rural Orissa
6	Mr. Joydeep Ghosh	Prof. A. Maharatna	The Economic Impact of the National Rural Employment Guarantee Act, 2005
7	Mr. Bharat Kumar Shantharam Kotta	Dr. R. Nagarajan	Impact of Social Networking and Assimilation on Settlement: A Study of Sri Lankan Tamil Refugees in South India
8	Ms. Asl Ghorbani Ziba	Dr. R. Nagarajan	Economic Growth and Health: A Study of Iran and India
9	Ms. Kahram Azadmehr	Dr. K.C. Thaware	The Comparative Analysis of Linder Hypothesis: The Bilateral Trade Model between Iran and its Trade Partners
10	Ms. Anindita Sinha	Prof. A. Maharatna	Fertility Transition among the Scheduled Tribes of North-East India: Historical and Comparative Perspectives
11	Mr. Ananta Basudev Sahu	Dr. R. Nagarajan	Impact of Infant Feeding Practices on HIV Transmission, Growth and Survival of Children among HIV Positive Women
12	Ms. Medha Anand Deshmukh	Prof. Rajas Parchure	A Study of the Price Instability of Food Crop Onion and the Possibility of Planning in Production of Onion

Sr. No	Name of the Students	Principal Supervisor	Thesis Title
13	Mr. Ashish Ravindranath Kulkarni	Prof. Rajas Parchure	Business Cycles in India
14	Ms. Atreyee Sinha Chakraborty	Dr. Swapnendu Bandyopadyay	Effect of Non -Tariff Barriers (NTBs) on Exports - A Theoretical Study
15	Mr. Pole Prasad	Dr. Anurag Asawa	Microfinance in India - An Analysis of Supply Side Constraints
16	Ms. Smita Anand	Prof. S.N. Tripathy	An Enquiry into the Reasons for Poor Development of Higher Education and Out - migration of Students in Bihar
17	Mr. Sandeep Kumar	Prof. S.N. Tripathy	Public-Private Partnership for the Development of a Backward State : A Case Study of Bihar
18	Ms. Deepika Chawla	Prof. Rajas Parchure	Estimation of Linkages between Organized and Unorganized Sectors in the Indian Economy
19	Ms. Sharvari Rahul Shukla	Dr. R. Nagarajan	Demographics of Ageing and Ageing Policies in Developed and Developing Countries: Current Situation and Future Challenges
20	Mr. Manoj Kumar Singh	Prof. Rajas Parchure	Identifying Innovative Clusters in Indian Economy and its Implications for National Innovation Policy
21	Mr. Varun Ramesh Miglani	Dr. S.S. Kalamkar	Economics and Sustainability of Contract Farming: A Case of Onion and Potato Cultivation in Maharashtra
22	Ms. Abhyankar Ketaki Nitin	Dr. Pradeep Apte	Should India Adhere to Full Capital Account Convertibility?
23	Ms. Shahana Khan	Dr. Lalitagauri Kulkarni	Islamic Finance - Potential and Prospects
24	Ms. Kamble Ujwala S	Prof. Rajas Parchure	International Trade in Capital Goods
25	Mr. Ranajit Sengupta	Dr. Anjali Radkar	Contraceptive Practices and Unmet Need among Young Currently Married Rural Women in Empowered Action Group (EAG) States of India

Sr. No	Name of the Students	Principal Supervisor	Thesis Title
26	Ms. Thombre Vaishali Mohan	Dr. K.C. Thaware	Export-Import of Gems and Jewellery in India - Contribution in Foreign Exchange and Employment Generation (with special reference to SEEPZ, Mumbai)
27	Ms. Prajakta Panshikar	Dr. Sanjeevane Mulay	Migration and Population Ageing
28	Mr. Manas Ranjan Das	Prof. Rajas Parchure	Financial Inclusion and Role of Banks in India
29	Mr. Vartak Anil Vaman	Dr. R. Nagarajan	Resource Allocation for Mental Health
30	Mr. N. Prasanna Venkatesan	Prof. S. N. Tripathy	Macro and Micro Dimensions of External Commercial Borrowings- Implications for Indian Economy
31	Ms. Manu Jain	Dr. Lalitagauri Kulkarni	Feasibility Study of Social Security Programme of Unorganised Sector in India
32	Mr. Bodkhe Naresh Ramakrishna	Dr. Pradeep Apte	Anti-dumping: Indian Experience and World Perspectives
33	Mr. Saket Hishikar	Dr. Rajesh Acharya	Indian Pension System
34	Mr. Bazil Shaikh	Prof. Rajas Parchure	The Evolution of Modern Banking Institutions in India, their Impact on Transaction Costs and Socio-economic Behaviour
35	Mr. Rajesh Dinkar Danane	Dr. T. Abhilash	Tribal Sub-Plan Implementation and its Impact on Educational Status of the Scheduled Tribes in Nandurbar District of Maharashtra
36	Mr. Ashish Karnavat	Dr. Lalitagauri Kulkarni	Financial Reporting of Derivatives: An Economic Perspective
37	Ms. Joshi Sneha Shriram	Prof. Rajas Parchure	Theory of Personal Income Distribution
38	Ms. Sheetal Sachin Sonawane	Dr. Anjali Radkar	The Implementation of Pre-Conception and Pre-Natal Diagnostic Techniques (PCPNDT) Act and Its Effect on Sex Selection: with Special Reference to Maharashtra

Sr. No	Name of the Students	Principal Supervisor	Thesis Title
39	Ms. Meena Hemchandra	Prof. Rajas Parchure	Early Warning Framework for a Financial Crisis
40	Ms. Shilpa Deepak Deo	Prof. Dhanmanjiri Sathe	Urban Poverty and Vulnerability in Pune City
41	Ms. Ishita Ghoshal	Prof. Neeraj Hatekar	A Historical Causality Analysis of Inflation
42	Ms. Watve Medhavinee Narendra	Dr. Pradeep Apte	Environmental Impact Analysis in Input-Output Framework





## Public Lecture Series

### Kale Memorial Lecture

Prof. Erik Dietzenbacher, Professor, University of Groningen, The Netherlands and President, International Input-Output Association, delivered the Kale Memorial Lecture, 2013 on “World input-Output Database: An Application to India” at the 20<sup>th</sup> Convocation of the Institute on February 1, 2014.

### P.R. Dubhashi Public Lecture

Professor C.P. Chandrashekar, Centre for Economic Studies and Planning, Jawaharhal Nehru University, New Delhi delivered the P.R. Dubhashi Public Lecture, 2014 on “Illicit Finance Flows and India's Development” on March 22, 2014.



Prof. Erik Dietzenbacher delivers the 75th Kale Memorial Lecture

## Economics Conclave 2014



Prof. Rajas Parchure welcomes Dr. C. Rangarajan, Chief Economic Advisor to the Government of India, at the Economics Conclave 2014.



Prof. Arun Kumar, JNU, New Delhi



Mr. Deepak Mohanty, Reserve Bank of India



Panel Discussion at the Economics Conclave 2014



A view of the audience

## Library Services

Gokhale Institute of Politics and Economics (GIPE) shares Servants of India Society's Dhananjayrao Gadgil Library from 1930 onwards. The library is considered to be one of the foremost specialised libraries in India in the fields of economics and other related social sciences. The library has 2,79,630 books and 376 journals and periodicals received on subscription, exchange, gift, and depository basis. All the library management operations are automated using SLIM software from 2002 onwards. Library OPAC is accessible both on the LAN as well as Internet from <http://www.gipe.ac.in:8080/w27>.

GIPE Library has initiated an ambitious programme of digitization of rare collections and up to March 2014 more than 8000 books have been digitised. Further, the Library has, in collaboration with Institute of Social and Economic Change (ISEC), Bangalore, digitised more than 500 books during the year. All digitised books are accessible to scholars around the world through the Institutional Repository <http://dspace.gipe.ac.in>

With a view to keep the users informed about new additions to the Library and the contents of the newly received journals, the library brings out a monthly list of new additions, a fortnightly list of articles on India, and an annual cumulative list of articles on India.

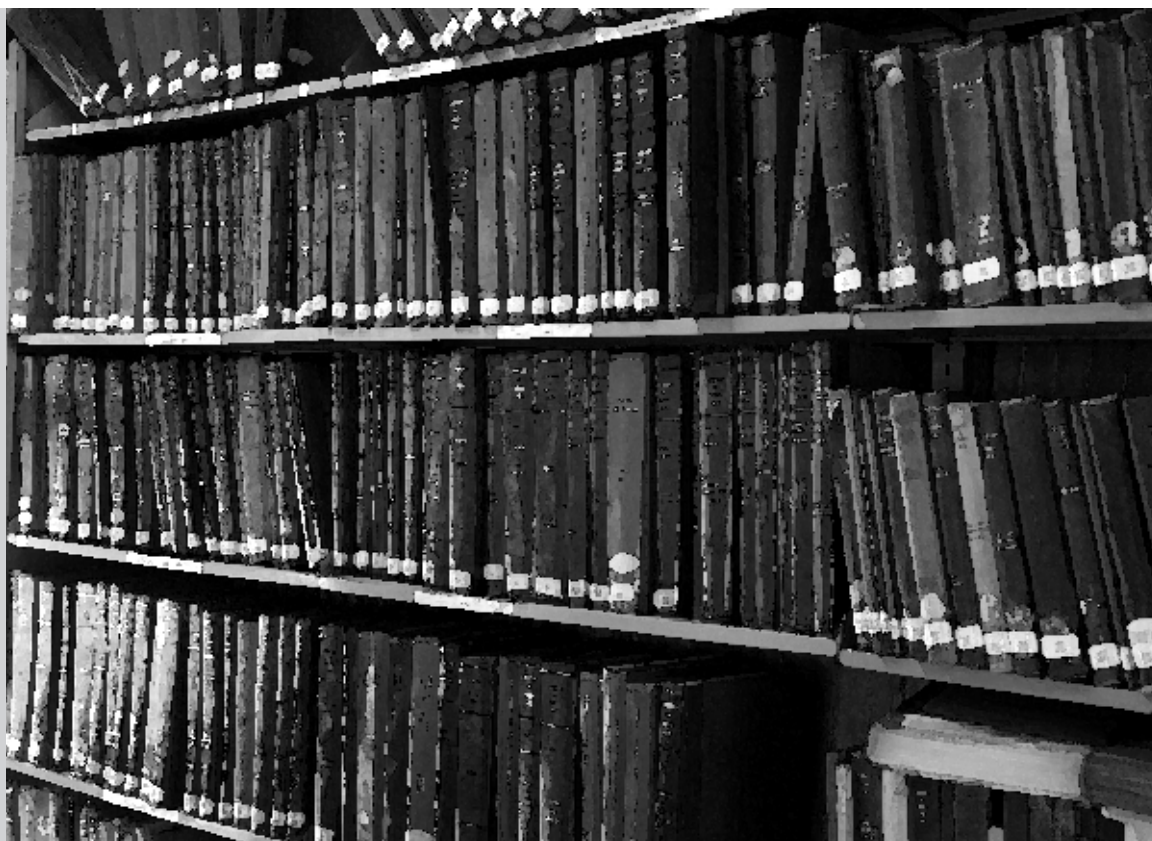
### **New books purchased and journals subscribed to:**

During the academic year 2013-2014, the library procured 376 periodicals which include 191 Indian journals and 185 foreign journals, as added 1527 books to its collection. The cost of the books and journals purchased/subscribed are given below:

Expenditure on books : Rs. 11,86,897.00

Expenditure on journals : Rs. 38,38,788.00

Total expenditure : Rs. 50,25,685.00



## **The Computer Centre**

### **The Statistical Department**

The statistical department helps the statistical research team at GIPE which assists faculty members, researchers and students with data analysis.

The Computer Centre housed in the Statistical Department is well-equipped with hardware and software to support research, teaching and training programmes of the Institute. A one-year Certificate Course on Computer Applications for Economic Analysis has been introduced for the past and present M.A. and Ph.D. students of the Institute to complement the teaching in economics. The students are equipped with the latest analysis/analytical tools such as STATA, EViews, SPSS, MATHEMATICA, etc., in a specially designed certificate course which adds value and insight to theoretical learning.

In the computer laboratory, students have access to the internet both for reference work and communication. The most up-to-date resources for these purposes are at hand as the Institute subscribes to superior resource websites such as Britannica, JSTOR, Indiastat, Springerlink, etc.

### **Consultancy and guidance services in data processing in collaboration with the Indian Council of Social Science Research**

In the Computer Section, facilities for data processing are available to researchers. The Institute offers consultancy and guidance services in data processing in collaboration with the Indian Council of Social Science Research.



## Publications

The Institute has been regularly publishing a quarterly journal of economics in English, *Artha Vijnana* since March 1959. This journal publishes results of research work carried out in the Institute as well as works of scholars from outside the Institute after a rigorous refereeing process. The journal achieved an important milestone in 2008 by completing its 50th year of continuous publishing. To celebrate the occasion, the Institute published a

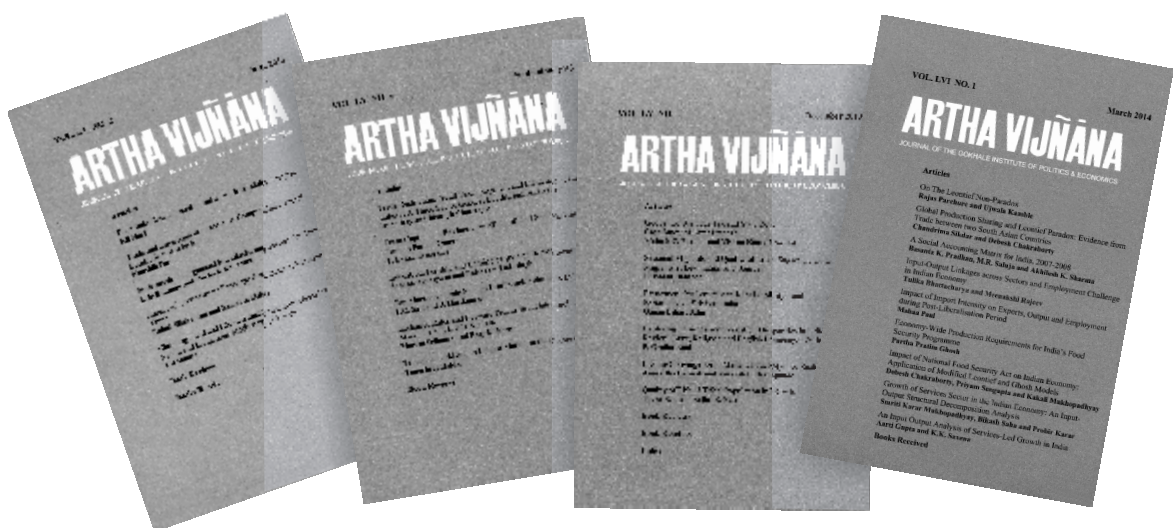
Golden Jubilee Special Issue of the Journal (Vol. 50, No. 4, December 2008). The Institute also publishes research works in the form of working papers, books and mimeograph series. The R.B.R.R. Kale Memorial Lecture, organised by the Institute every year on the occasion of the Founder's Day, is published under the Kale Memorial Lecture Series.

### Editorial Board of *Artha Vijnana*

Editor	Rajas Parchure
Managing Editor	R. Nagarajan
Editorial Board	Prashant Bansode, Jean Drèze, Jayantee Kajale, K.L. Krishna, Arup Maharatna, Rajas Parchure, Anjali Radkar, Indira Rajaraman, Bibhas Saha, Partha Sen, Deepak Shah, Sangeeta Shroff, Kailash Thaware, S.N. Tripathy
Advisory Board	Amiya Bagchi, André Béteille, Vikas Chitre, Kanchan Chopra, D.N. Dhanagare, D.M. Nachane, Mihir Rakshit, C.H. Hanumantha Rao, Sunanda Sen, U. Shankar, Leela Visaria

### The Institute published the following issues of its journal *Artha Vijnana* during the year 2013-2014:

- Artha Vijnana*: Vol. 54, No. 2, June 2012
- Artha Vijnana*: Vol. 54, No. 3, September 2012
- Artha Vijnana*: Vol. 54, No. 4, December 2012
- Artha Vijnana*: Vol. 55, No. 1, March 2013



## Appointments, Retirements, Resignations, etc.

### Staff Members (Joined / Retired / Left during the period)

During the year, the following Academic Staff have joined, retired or left the Institute.

Name of the Staff Member	Designation	Joined / Retired / Left
Dr. K.S. Hari	Assistant Professor	Joined
Dr. K.S. Reddy	Assistant Professor	Joined
Dr. Prema J. Borkar	Assistant Professor	Joined
Dr. Dilip B. Kajale	Assistant Professor	Joined
Prof. Arup Maharatna	Professor	Terminated
Prof. S.N. Tripathy	Professor	Terminated
Mr. M. Murali Krishna	Deputy Librarian	Terminated
Mr. G.S. Narkulwad	Assistant Professor	Terminated
Dr. V.R. Farkade	Research Associate	Resigned
Prof. H.M. Desarda	Visiting Professor	Joined

During the year, the following non-academic staff joined, retired or left the Institute.

Name of the Staff Member	Designation	Joined / Retired / Left
Smt. Veena V. Natu	Clerk	Died
Shri. Rajesh Bhatikar	Registrar	Joined
Shri. M.M. Marathe	Tabulation Assistant	Retired
Shri K.V. Kulkarni	Clerk /Typist	Retired
Mrs. Shreya Bedekar	Career Consultant and Placement Coordinator	Joined



## Staff Quarters and Hostels

The Institute has its own residential campus, about 700 meters away from the academic campus, with quarters for both teaching and non-teaching members of the staff. The residential campus also houses hostel facilities for male and female students.

Its strategic location with respect to the Institute and the city ensures minimum wastage of time and resources in commuting, and provides the faculty members and students a peaceful environment in which to pursue their research or class work.

However, the importance of recreation is fully recognized and on-campus provisions are made for several sports such as volleyball, table tennis, cricket, badminton, etc. The hostels have an adjoining dining hall and a TV room. The proximity of the hostels to the staff quarters allows students' interaction with the faculty members on a personal basis which also enhances faculty-student interaction and creates opportunities for discussions outside the class on issues of current economic importance.



## Student Activities

GIPE has consciously aimed to provide its students with an environment conducive to their all round development. The academic calendar is interspersed with multi-dimensional co-curricular and extra-curricular activities such as Economics Conclave, Equilibria, Manan, Pulse, Sports Week, etc. that add value to learning and also provide scope for students to pursue their hobbies in sports, dance, music, quiz, debate, and such other activities.

### Economics Conclave

The Institute successfully hosted its maiden Economics Conclave in February 2014, on the theme "Indian Economy: Performance and Challenges Ahead". Eminent economists, academicians, administrators and policy makers delivered lectures and participated in panel discussions on various aspects of the Indian Economy. The two-day academic event covered the real sectors and financial sectors of the economy and successfully created a suitable environment for fruitful interaction between students and icons such as Dr. C. Rangarajan, Dr. Arun Kumar, Dr. Chitra Ramakrishnana, Dr. Deepak Mohanty, and others. With the first Conclave being a major success, the Institute is on course to make this an annual event.

### Equilibria & Manan

Equilibria stand for amalgamation of ideas, promotion of creative liberty and encouragement to thought and discussion on diverse issues of relevance. Initiated in 2011, Equilibria is a student run newsletter which provides a platform for expression of creative writing skills among students. To celebrate the first successful year of the newsletter, Team Equilibria organized in 2012 their first annual fest "Manan", which comprised a Guest lecture along with knowledge based competitions. In 2013 the bar was raised higher as Manan turned into an inter-college fest for the first time. The event was inaugurated by Dr. Aneeta Benninger, Executive Director, Centre for Development Studies & Activities, Pune.

### The Debating Society

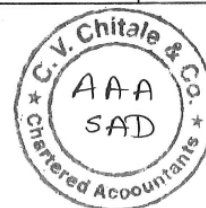
The debating society at GIPE was started in 2013 by a group of students enthusiastic about learning and evolving as debaters through the Asian parliamentary style of debating.





**GOKHALE INSTITUTE OF POLITICS AND ECONOMICS, PUNE 411 004**  
University Established under section 3 of the UGC Act 1956  
**BALANCE SHEET AS AT 31ST MARCH, 2014**

FUNDS AND LIABILITIES	Amount (Rs.)	Amount (Rs.)	ASSETS	Amount (Rs.)	Amount (Rs.)
<b>RESERVE FOR BUILDING AND EQUIPMENTS</b>			<b>FREEHOLD LAND (at cost) :</b>		
As per last Balance Sheet	13,719,820.00		As per last Balance Sheet		193,328.46
Add : Additions during the year	600,000.00	14,319,820.00	<b>BUILDING ( at cost ) :</b>		
			As per last Balance Sheet (Gross Block)	19,274,923.56	
<b>RESERVE FOR REPLACEMENT OF TABULATING MACHINERY :</b>			Less : Provision for Depreciation made upto the year 2013-2014	9,530,785.26	9,744,138.30
As per last Balance Sheet	4,132,273.63		<b>NEW BUILDING ( at cost ) :</b>		
Add : Additions during the year	150,000.00	4,282,273.63	<b>PROFESSORS QUARTERS, HEALTH CENTRE and DISPENSARY</b>		
			As per last Balance Sheet (Gross Block)	11,260,875.20	
<b>RESERVE FOR STATISTICAL LABORATORY</b>			Less : Provision for Depreciation made upto the year 2013-2014	2,318,123.00	8,942,752.20
As per last Balance Sheet	2,491,180.76		<b>GUESTS HOUSE and SUITES</b>		
Add : Additions during the year	150,000.00	2,641,180.76	As per last Balance Sheet (Gross Block)	6,677,221.65	
<b>PUBLICATION RESERVE :</b>			Less : Provision for Depreciation made upto the year 2013-2014	1,374,550.00	5,302,671.65
Stock of Publications			<b>NEW ACADEMIC BLOCK</b>		
Publications prior to 1973 - 74 (Publications not charged to grants)		25,164.15	Gymkhana cum Multipurpose Indoor Sports Complex	32,938,457.20	
<b>RESERVE FOR COMPUTERS :</b>			<b>WOMEN'S HOSTEL - (As per Schedule 6)</b>	15,542,526.00	
As per last Balance Sheet	2,918,340.77		(Transferred on 31.03.2014 under XI Plan)	19,591,314.00	68,072,297.20
Add : Additions during the year	150,000.00	3,068,340.77	<b>BUILDING UNDER CONSTRUCTION:</b>		
<b>RESERVE FOR PENSION, GRATUITY, ARREARS PROVIDENT FUND ETC. FOR EMPLOYEES</b>			New Academic Block XI Plan		
As per last Balance Sheet	3,500,000.00		As per last Balance Sheet	6,376,494.20	
Add : Additions during the year	600,000.00	4,100,000.00	Additions During the Year 2013-2014 UGC XI Plan	18,671,831.74	
<b>LIABILITIES :</b>			Additions During the Year 2013-2014 Institute	7,890,131.26	
Outstanding Expenditure	4,700,150.18		Gymkhana cum Multipurpose Indoor Sports Complex XI Plan		
Sundry Credit Balances and Advance Receipts	3,791,373.94		As per last Balance Sheet	3,930,604.00	
Electricity, Hostel and Other Deposits			Additions During the Year 2013-2014 UGC XI Plan	834,278.00	
Caution Money, Library, Mess	2,636,630.00	11,128,154.12	Additions During the Year 2013-2014 Institute	10,777,644.00	
<b>BUILDINGS, FURNITURE AND EQUIPMENTS GRANT</b>			Womens Hostel XI Plan		
As per last Balance Sheet	65,933,493.16		As per last Balance Sheet	4,171,739.00	
Add : Additions out of Grant from;			Additions During the Year 2013-2014 UGC XI Plan	1,630,294.00	
i) UGC XI Plan Academic Block Building	18,671,831.74		Additions During the Year 2013-2014 Institute	13,789,281.00	
ii) UGC XI plan Merged Scheme - Gymkhana cum Multipurpose Indoor Sports Complex for Building under construction	834,278.00		Total	68,072,297.20	
Women's Hostel under construction	1,630,294.00		(Less) Transferred to Buildings on 31.03.2014	68,072,297.20	-
iii) UGC XII Plan Block Grant :			<b>BUILDING UNDER CONSTRUCTION:</b>		
Equipment	1,122,802.00		New Academic Block UGC XII Plan	224,720.00	
Repairs Maintenance Renovation	137,211.00		Womens Hostel UGC XII Plan	224,720.00	449,440.00
Campus Development	497,382.00		<b>TABULATION MACHINES ( at cost ) :</b>		
IT Requirement	624,267.00		As per last Balance Sheet (Gross Block)	904,620.01	
Furniture, Fixtures, Computers	891,694.00		Less : Provision for Depreciation made upto the year 2013-2014	737,368.73	167,251.28
Buildings under construction - Academic Block	224,720.00		<b>FURNITURE, DEAD STOCK AND EQUIPMENTS (at cost) :</b>		
Women's Hostel	224,720.00		As per last Balance Sheet (Gross Block)	38,833,483.76	
iv) UGC SAP ( CASE) XI Plan	9,744.00		Add : Addition out of Grant from - UGC XII Plan/ SAP/Census Data/ICSSR FDW/UNFPA	5,093,643.00	
iv) United Nations Framework for Population Activities	11,190.00			43,927,126.76	
v) Census Data Workstation	1,753,939.00		Less : Provision for Depreciation made upto the year 2013-2014 (Refer Schedule 4A)	9,126,022.78	34,801,103.98
vi) ICSSR Female Domestic Workers	10,458.00		<b>TERM DEPOSITS : As per Schedule 5</b>		
vii) UGC Major Research Project	34,956.00		i) Bank of Maharashtra	39,228,383.00	
	92,612,979.90		ii) State Bank of India	26,893,875.00	
<b>Less : Depreciation on Assets Acquired</b>			iii) Bank of Baroda	8,432,517.00	
i) Furniture and Equipments	1,500,705.25		iv) Punjab National Bank	21,900,000.00	96,454,775.00
ii) Building	1,262,608.00		<b>P. V. PANDURANGI PRIZE ENDOWMENT GRANT INVESTMENT: Deposit with Bank of Maharashtra</b>		17,468.00
iii) Tabulation Machines	8,803.00	89,840,863.65	<b>B. N. DATAR GRANT INVESTMENT: Deposits with BOM / SBI / BOB / UTI MF</b>		962,761.00
<b>ADVANCE GRANTS : As per Schedule 2</b>		33,506,729.50	<b>M.V. NAMJOSHI GRANT INVESTMENT: Deposits with Bank of Maharashtra</b>		19,964.00
<b>RESERVE BANK OF INDIA CORPUS FUND :</b>			Total c/f		225,127,951.07
As per last Balance Sheet	40,520,853.49				
Add : Additions during the year					
Add : Investment Income received during the year	3,806,314.36				
	44,327,167.85				
Less : Expenditure during the year	3,505,972.00	40,821,195.85			
<b>Total c/f</b>		203,733,722.43			



Total b/f		203,733,722.43	Total b/f		225,127,851.07
<b>THE ROCKEFELLER FOUNDATION</b>			<b>AGNIHOTRI GRANT INVESTMENT:</b>		
As per last Balance Sheet	85,377,724.22		Deposits with Bank of Maharashtra		18,716.00
Add : Investment Income received during the year	9,619,435.67		<b>P R DUBHASHI GRANT INVESTMENT :</b>		
Add : Amount utilised and transferred from Reserve for Construction of new Buildings	16,605,000.00		Deposits with Bank of Maharashtra		95,019.00
Add : Transferred from Income and Expt. A/c	4,033.72		<b>B G BAPAT INVESTMENT :</b>		
	112,607,093.61		Deposits with Bank of Maharashtra		53,125.00
Less : Expenditure during the year	3,183,350.00	109,423,743.61	<b>ALLIANZ GLOBAL FOUNDATION INVESTMENT</b>		
			Deposits with Bank of Maharashtra		125,000.00
<b>FORD FOUNDATION GRANT :</b>			<b>INVESTMENTS (at cost) :</b>		
As per last Balance Sheet	15,703,055.59		I Equity Shares in Poona University	1,000.00	
Add : Investment Income received during the year	2,221,680.04		Federal Co-op. Consumers Stores Ltd. Pune		
	10,927,735.63		II Central Government Securities:		
Less : Expenditure during the year	4,363,891.00	14,558,844.63	i) 10.18 % GOI 2025	1,100,000.00	
			ii) 10.18 % GOI 2026	1,000,000.00	
<b>C. V. PANDURANGI PRIZE</b>			iii) 10.18 % GOI 2026	100,000.00	
<b>ENDOWMENT GRANT :</b>			iv) 7.95 % GOI 2032	580,000.00	
As per last Balance Sheet	15,736.10		v) 7.95 % GOI 2032	1,430,000.00	
Add : Additions during the year	2,885.00		vi) 8.33 % GOI 2035	1,000,000.00	
Add : Investment Income received	1,049.00		vii) 7.50 % GOI 2034	200,000.00	
	20,470.10		viii) 7.65 % GOI 2032	300,000.00	
Less : Expenditure during the year	5,000.00	17,470.10	ix) 13.25 % GOI 2021	500,000.00	
			x) 6.25 % GOI 2018	100,000.00	
<b>B. N. DATAR GRANT :</b>			xi) 8.13% GOI 2022	6,300,000.00	
As per last Balance Sheet	906,894.61		xii) 8.08% GOI 2022	1,100,000.00	
Add : Investment Income received during the year	76,435.80		xiii) 8.40 % GOI 2026 Oil Mktg	1,200,000.00	
	983,331.41		xiv) 8.40 % GOI 2025	300,000.00	
Less : Expenditure during the year	16,693.00	966,638.41	xv) 10.25% GOI 2021	200,000.00	
			xvi) 8.13% GOI 2022	7,000,000.00	
<b>GRANT FOR CHAIR AND UNIT IN PLANNING AND DEVELOPMENT FROM PLANNING COMMISSION :</b>			xvii) 8.79 GOI 2021	5,500,000.00	
As per last Balance Sheet	13,293,514.46		ix) 8.53% GOI 2041	500,000.00	
Add : Investment Income received during the year	1,211,350.89		x) 8.35% GOI Loan 2036	525,350.00	
	14,494,875.37		xi) 8.53% GOI Stock 2041	965,000.00	
Less : Expenditure during the year	1,005,077.00	13,489,798.37	iii) Debentures, Bonds of companies / Finance corporation and securities of State Govt. / Mutual funds ( As per Schedule 1)	29,636,000.00	65,537,350.00
<b>GRANT FOR PRIZE FORM LATE M.V. NAMJOSHI :</b>					
As per last Balance Sheet	17,801.41				
Add : Additions during the year	2,947.00				
Add : Investment Income received during the year	2,113.00				
	22,861.41				
Less : Expenditure during the year	3,000.00	19,861.41			
<b>GRANT FOR PRIZE FORM LATE AGNIHOTRI</b>					
As per last Balance Sheet	16,737.05				
Add : Additions during the year	2,958.00				
Add : Investment Income received during the year	1,981.00				
	21,716.05				
Less : Expenditure during the year	3,000.00	18,716.05			
<b>GRANT FOR ALLIANCE GLOBAL EDUCATION</b>					
As per last Balance Sheet	-				
Add : Additions during the year	125,000.00				
Add : Investment Income received during the year	-				
	125,000.00				
Less : Expenditure during the year	6,000.00	119,000.00			
<b>Total of</b>		<b>342,317,948.01</b>	<b>Total of</b>		<b>290,951,962.07</b>



Total MT		342,347,948.01	Total Mt		290,561,962.07
<b>GRANT FOR P R DUBHASHI :</b>			<b>PUBLICATIONS :</b>		
As per last Balance Sheet	99,252.00		i) Stock on Hand ( at cost )		
Add : Additions during the year	15,000.00		( not charged to grants )		
Add : Investment income received during the year	10,564.00		Publication prior to 1973 -74	25,184.15	
	114,816.00		Stock on Hand	1,684.35	26,848.50
Less : Expenditure during the year	15,003.00	99,813.00			
<b>KAMALNAYAN BAJAJ CORPUS FUND :</b>			<b>DEPOSITS :</b>		
As per last Balance Sheet	14,943,164.82		(Unsecured , considered good )		356,827.00
Add : Investment income received during the year	1,888,534.60				
	16,829,699.42		<b>ADVANCES :</b>		
Less : Expenditure during the year	985,967.00	15,882,712.42	(Unsecured , considered good )		
<b>GRANT FOR PRIZE FORM B G BAPAT</b>			For Expenses	189,770.49	
As per last Balance Sheet	52,699.00		For personal loan	2,591,625.00	2,791,395.49
Add : Investment income during the year	4,802.00				
	57,498.00		<b>AMOUNTS RECEIVABLE :</b>		
Less : Expenditure during the year	3,000.00	54,498.00	(Unsecured) - Schedule 3		
<b>INCOME AND EXPENDITURE ACCOUNT :</b>			Considered Good	58,308,612.32	
Excess of Income over Expenditure	4,933.72		Considered Doubtful	69,162.48	58,375,774.50
Less : Transferred to Rockefeller Foundation Stabilization Grant	4,933.72	-			
<b>RESERVE FOR STAFF QUARTERS AND HOSTEL REPAIRS ETC. :</b>			<b>BANK BALANCES :</b>		
As per last Balance Sheet	6,194,663.01		In Savings Bank Accounts with		
Add : Transferred from Income and Expenditure A/c Staff Quarters and Hostel Account	1,997,471.60	8,192,134.61	i) State Bank of India	542,162.70	
			ii) Bank of Baroda	228,783.38	
<b>RESERVE FOR CONSTRUCTION OF NEW BUILDINGS</b>			iii) Bank of Maharashtra	6,596,025.00	
As per last Balance sheet	12,100,000.00		iv) Bank of Maharashtra (Current Account)	668,507.00	
Add: Additions during the year	4,905,000.00		v) Punjab National Bank	5,040,581.91	
	16,605,000.00		vi) HDFC Bank	944,228.41	14,017,298.48
Less : Amount utilised and transferred to Rockefeller Foundation Reserve	16,605,000.00	-			
<b>TOTAL</b>		<b>368,557,105.04</b>	Remittance in Transit		27,000.00
			<b>TOTAL</b>		<b>356,557,105.04</b>

Notes on Accounts - Schedule 4

A our report of even date attached  
 F V. CHITALE & CO.  
 Chartered Accountants  
 FRN: 126338W

Abhay A. Aychat  
 Partner  
 Membership No. 112265  
 Place : Pune  
 Date : August 20, 2014



Dr. Rajee Parthure  
 Professor and Officiating Director  
 Gokhale Institute Of Politics and Economics  
 Pune - 411004  
 Date : August 20, 2014

**Officiating Director**  
**Gokhale Institute of Politics & Economics**  
 Deemed to be University,  
 Pune-411 004.

**GOKHALE INSTITUTE OF POLITICS AND ECONOMICS, PUNE 411 004**  
 University Established under section 3 of the UGC Act 1956  
**INCOME AND EXPENDITURE ACCOUNT FOR THE PERIOD 01.04.2013 TO 31.03.2014**

EXPENDITURE	Amount (Rs.)	Amount (Rs.)	INCOME	Amount (Rs.)	Amount (Rs.)
General Section (i.e. expenditure unallocated as well as other than specific section shown below) Expenses for Adhoc Projects / Assignments Schedule 'A'		15,686,108.82	Grants for Research Work  From the Ministry of Health and family welfare, Government of India for; Population Research Centre PIP - TA/DA - Non-Recurring	15,018,668.50 114,000.00	
Library - Schedule 'E'		132,240.00	From the Ministry of Agriculture and Co-operation, Government of India for; Agro Economic Research Centre	10,154,155.00	
Teaching Programme-Schedule 'C'		8,311,851.30	From the Government of Maharashtra for; Salaries and Allowances	11,811,767.00	
Establishment Expenses Schedule 'D'		11,791,952.73	From the University Grants Commission for;		
Reserve for Replacement of Building and Equipment		800,000.00	UGC XI plan SEand IP	8,872,274.00	
Dep.on Buildings/Furniture and Equipments/ Tabulating Machines Schedule 4A	1,793,241.00		UGC Major Research Project K C Thaware	160,143.30	
Furniture and Equipments (Int.Assets-2,82,535.75-Grants15,00,705.25)	1,282,808.00		UGC XI Plan SAP	525,937.00	
Buildings		3,034,652.00	UGC XII Plan Block Grant (General + Merged)	7,818,873.00	
Tabulating Machines	8,803.00	4,505,000.00			52,505,817.90
Reserve for Construction of New Buildings			Transferred from Capital Grants towards Furniture and Equipments Buildings Tabulating Machines		1,500,705.25 1,282,608.00 8,803.00
Tabulation Section Expenditure - Schedule 'E'		500,000.00	Income from Adhoc Projects/ Assignments Schedule 'J'		16,742,857.32
Ministry of Health and Family Welfare Schedule, 'F'			Other Income		
Population Research Centre Recurring PIP TA/DA - Non-Recurring		15,018,668.50 114,000.00	Interest Received on : Personal Advances Bank Balance	152,238.00 493,056.00	645,354.00
Ministry of Agriculture and Cooperation Schedule, 'G'			Receipts from R.B.P.R.Kate Dharmadasya Fund Library Service Charges, Overdue Charges etc.		21,450.00 267,168.00
Agro Economic Research Centre		10,194,155.00	Sale of Publications		101,355.00
Government of Maharashtra - Schedule 'H'			Tuition fees and other Receipts		23,075,106.00
Salaries and Allowances etc.		11,811,767.00	Miscellaneous Receipts		2,058,127.00
Arthavijans & Publication Expenses 'Schedule K'		50,000.00	Extra Earnings Surrendered		145,000.00
University Grants Commission Schedule, 'I'			Overhead Charges		750,308.00
UGC XI plan SEand IP		6,872,274.00	Tabulation Section Receipts		35,000.00
UGC Major Research Project K C Thaware		160,143.30	Total of		99,122,657.37
UGC XI Plan SAP		525,937.00			
UGC XII Plan Block Grant ( General + Merged)		7,818,873.00			
Total of		98,517,723.65			



Total b/f		99,617,723.65	Total b/f		99,122,657.37
Institute adhoc provision for pension, gratuity, arrears etc.		600,000.00	Staff Quarter and Hostel Account Rent and Other Receipts	5,169,763.20	
			Less : Maintenance	3,172,291.60	
				1,997,471.60	
Excess of Income over Expenditure Transferred to Balance Sheet		4,933.72	Transferred to Reserve for Staff Quarters and Hostel	1,997,471.60	
TOTAL		99,122,667.37	TOTAL		99,122,657.37

Notes on Accounts - Schedule 4  
As per our report of even date attached  
For C V CHITALE & CO.  
Chartered Accountants  
FRN: 126330W

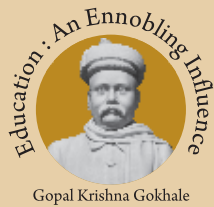
*Abbhay A. Avachat*  
Abbhay A. Avachat  
Partner  
Membership No. 112265  
Place : Pune  
Date : August 20, 2014



*Dr. Rajes Parbhure*

Dr. Rajes Parbhure  
Professor and Officiating Director  
Gokhale Institute Of Politics and Economics  
Pune - 411004  
Date : August 20, 2014

**Officiating Director**  
**Gokhale Institute of Politics & Economics**  
**Deemed to be University,**  
**Pune-411 004.**



## **Gokhale Institute of Politics and Economics**

(Deemed to be University)

Pune – 411 004

---

846, Shivajinagar, BMCC Road, Deccan Gymkhana, Pune 411004.

Ph. No. : (020) 25650287, 25654288/89, 25675008, 25661367, 25661369/70

Fax : (020) 25652579

E-mail : [gokhaleinstitute@gipe.ac.in](mailto:gokhaleinstitute@gipe.ac.in)

Website : [www.gipe.ac.in](http://www.gipe.ac.in)