


# TANGANYIKA EXHIBITION HANDBOOK



OFFICE OF THE  
SECRETARY OF INDIA  
AGRICULTURE  
POONA.

V611.N2

F4

4191

V611.N2  
F4  
004191

# FLAX HEMP SISAL JUTE

ALL DESCRIPTIONS

**W**

82,

AV

**td.**

E.C. 3

MS:  
LONDON."

ys,

DUNDEE:  
6, Euclid Crescent.  
BELFAST:  
Textile Building,  
Linenhall Street.

LIVERPOOL:  
9, London Court,  
Crown Street.  
NEW YORK:  
52, Broadway.

PARIS:  
58, Rue Jean-  
Jacques Rousseau.  
BOLOGNA:  
Via Degli,  
Artieri No. 2.

# CONTENTS

	PAGE
OF THE TERRITORY ... ..	I
ION OF THE TERRITORY:—	
ion ... ..	9
ite ... ..	11
ral Description:—	
Surface ... ..	15
Vegetation ... ..	15
Animals, Wild and Tame ... ..	18
The Human Element ... ..	19
Towns and Communications	19
cts ... ..	22
n and Sanitation ... ..	31
Communications:—	
Railways ... ..	35
Roads ... ..	40
Posts and Telegraphs ... ..	40
le ... ..	42
guages ... ..	47
le ... ..	51
ntaineering ... ..	58
ministration and Law	62
cation ... ..	63
TURE:—	
eral ... ..	69
ive Agricultural Industry ... ..	70
Plantation Industry ... ..	78
ONDITIONS ... ..	91
L OF EX-ENEMY PROPERTY ... ..	93
CONDITIONS... ..	96
TURAL ASSISTANCE... ..	97
AND CATTLE PRODUCTS ... ..	99
Y ... ..	107
AND MINERALS ... ..	113

# CONTENTS

## TRADE AND COMMERCE:—

General	...	...	...	...	...	...	...
Commercial Associations and Firms	...	...	...	...	...	...	...
Planters' Associations and Members	...	...	...	...	...	...	...
Customs	...	...	...	...	...	...	...
Banks	...	...	...	...	...	...	...
Hotels and Shops	...	...	...	...	...	...	...

## APPENDIXES

I.	Imports and Exports	...	...	...	...	...	...
II.	Census...	...	...	...	...	...	...
III.	Roads	...	...	...	...	...	...
IV.	Administrative Districts and Sub-Districts	...	...	...	...	...	...
V.	Details of Sales of ex-Enemy Property	...	...	...	...	...	...
VI.	Rainfall	...	...	...	...	...	...
VII.	Game	...	...	...	...	...	...
VIII.	Native Woods	...	...	...	...	...	...
IX.	List of Books Having Reference to the Territory	...	...	...	...	...	...
X.	List of Publications Issued in the Territory	...	...	...	...	...	...
XI.	Weights and Measures of the Territory	...	...	...	...	...	...
XII.	List of Exhibitors and Exhibits	...	...	...	...	...	...

Map of the Territory.

Map Showing the Chief Districts of the Principal Exports.



# APPENDIXES

# APPENDIX I

## IMPORTS AND EXPORTS

### A.—PRINCIPAL IMPORTS, 1922

	£
Cotton piece goods .. .. .	590,466
Foodstuffs .. .. .	141,312
Building material .. .. .	47,918
Kerosene and motor spirit .. .. .	29,365
Cigarettes .. .. .	16,028
Tobacco .. .. .	29,443
Wines and beer .. .. .	13,927
Spirits .. .. .	30,122
Machinery .. .. .	17,811
Sundry iron and steel manufactures .. .. .	24,769

### B.—DISTRIBUTION OF IMPORT TRADE, 1922

	£	Per cent.
Dar es Salaam .. .. .	767,010	55·4
Tanga .. .. .	254,230	18·4
Mwanza .. .. .	90,094	6·5
Bukoba .. .. .	82,057	5·9
Lindi .. .. .	68,573	4·9
Other Ports .. .. .	124,248	8·9
	<u>1,386,212</u>	



## APPENDIX I.—continued

## D.—DISTRIBUTION OF EXPORT TRADE, 1922

DAR ES SALAAM.*					£
Sisal Hemp	...	...	991 tons	...	32,508
Cotton	...	...	18,662 centals	...	79,528
Hides	...	...	7,005 cwts.	...	10,600
Skins (Sheep and Goat)	...	...	1,063 cwts.	...	4,125
Copra	...	...	1,158 tons	...	23,375
Groundnuts	...	...	5,218 tons	...	94,951 <sup>c</sup>
Ghee	...	...	3,254 cwts.	...	9,730
Grain	...	...	147,906 cwts.	...	53,449
Beeswax	...	...	5,527 cwts.	...	21,042
Simsim	...	...	320 tons	...	5,812
TANGA.*					
Sisal Hemp	...	...	9,178 tons	...	255,312
Hides	...	...	3,591 cwts.	...	7,146
Skins (Sheep and Goat)	...	...	330 cwts.	...	1,716
Coffee	...	...	18,177 cwts.	...	55,319
Grain	...	...	22,806 cwts.	...	4,607
Copra	...	...	1,486 tons	...	28,894
MWANZA.*					
Cotton	...	...	7,785 centals	...	22,448
Hides	...	...	11,751 cwts.	...	25,235
Skins	...	...	787 cwts.	...	3,961
Groundnuts	...	...	4,622 tons	...	58,308
Ghee	...	...	3,625 cwts.	...	6,921
Grain	...	...	21,793 cwts.	...	18,294
Simsim	...	...	364 tons	...	4,897
LINDI.					
Sisal	...	...	55 tons	...	1,567
Cotton	...	...	7,368 centals	...	35,904
Groundnuts	...	...	723 tons	...	11,586
Grain	...	...	76,114 cwts.	...	26,546
Beeswax	...	...	488 cwts.	...	1,900
Simsim	...	...	1,213 tons	...	24,624
BUKOBA.					
Hides	...	...	3,416 cwts.	...	6,681
Coffee	...	...	57,996 cwts.	...	113,387
Groundnuts	...	...	748 tons	...	9,734

\* Dar es Salaam and Tanga receive the exports from districts on and near the Central and Tanga Railways respectively. The exports from Mwanza include produce from Northern Tabora.



APPENDIX II  
CENSUS 1921  
A.—NATIVE CENSUS

DISTRICT.	POPULATION, 1921 CENSUS.	GERMAN 1913 CENSUS.
Arusha ... ..	97,700	84,200
Bagamoyo ... ..	57,100	72,800
Bukoba ... ..	320,100	270,500
Dar es Salaam ... ..	149,100	161,500
Dodoma ... ..	270,900	299,400
Iringa ... ..	104,800	90,000
Kilwa ... ..	84,000	96,200
Kondoa-Irangi ... ..	196,700	218,300
Lindi ... ..	243,400	395,500
Mahenge ... ..	74,600	120,000
Morogoro ... ..	174,300	158,400
Moshi ... ..	158,200	118,300
Mwanza ... ..	702,300	620,000
Pangani ... ..	74,900	98,500
Rufiji ... ..	83,200	89,100
Rungwe ... ..	237,200	195,800
Songea ... ..	148,200	90,300
Tabora ... ..	502,100	437,500
Tanga ... ..	86,700	108,400
Ufipa ... ..	93,600	81,700
Kigoma ... ..	139,500	240,000
Usambara ... ..	107,400	98,600
TOTAL ... ..	4,107,000	4,145,000

DISTRICT	NATIONALITY.							OCCUPATION.						Total.
	American.	Belgian.	British.	French.	Greek.	Italian.	Other.	Agricultural.	Commercial.	Official.	Professional.	Other.	None.	
Arusha ...	2	—	258	15	15	—	97	100	9	9	5	5	259	387
Bagamoyo ...	—	—	9	10	—	—	1	—	—	4	16	—	—	20
Bukoba ...	—	—	25	19	6	4	22	3	5	8	43	3	14	76
Dar es Salaam ...	3	12	486	7	30	7	10	9	69	253	36	21	167	555
Dodoma ...	9	—	47	3	7	2	1	4	3	22	20	2	18	69
Iringa ...	—	—	24	—	—	4	—	1	3	10	9	—	5	28
Kilwa ...	—	—	8	—	—	—	—	1	—	5	—	—	2	8
Kondoa-Irangi ...	—	—	15	3	2	—	—	1	1	6	3	—	9	20
Lindi ...	—	—	57	—	2	2	3	5	2	18	33	4	2	64
Mahenge ...	—	1	8	4	—	—	—	—	1	7	5	—	—	13
Morogoro ...	—	1	73	21	40	3	7	46	7	31	22	4	35	145
Moshi ...	—	—	91	17	58	12	31	66	2	19	17	15	90	209
Mwanza ...	6	—	71	18	10	3	17	16	25	20	34	4	26	125
Pangani ...	—	—	15	—	9	—	1	5	—	6	—	8	6	25
Rufiji ...	—	—	8	—	8	—	—	8	—	5	—	—	3	16
Rungwe ...	—	—	29	3	—	—	1	—	2	21	6	1	3	33
Songea ...	—	1	17	2	1	—	2	—	—	12	7	2	2	23
Tabora ...	4	1	84	11	43	—	15	4	14	55	32	16	37	158
Tanga ...	—	1	166	3	22	11	21	17	4	59	28	30	86	224
Ufipa ...	1	3	16	19	3	—	24	1	1	9	48	2	5	66
Kigoma ...	—	23	46	2	14	1	7	1	27	31	9	11	14	93
Usambara ...	—	—	45	3	9	5	28	11	3	11	11	7	47	90
<b>TOTALS...</b>	<b>25</b>	<b>43</b>	<b>1,598</b>	<b>160</b>	<b>279</b>	<b>54</b>	<b>288</b>	<b>299</b>	<b>178</b>	<b>621</b>	<b>384</b>	<b>135</b>	<b>830</b>	<b>2,447</b>

C.—NON-NATIVE CENSUS: ASIATICS

DISTRICT.	NATIONALITY.					OCCUPATION (EXCLUDING ARABS).						Total.
	British Indians.	Goans and Portuguese Indians.	Baluchis.	Arabs.	Others.	Agricultural.	Commercial.	Official.	Professional.	Other.	None.	
Arusha ... ..	135	28	—	1	1	4	54	6	1	29	70	164
Bagamoyo ... ..	397	5	234	397	10	70	89	7	3	51	426	646
Bukoba ... ..	284	10	—	83	8	1	109	9	1	40	142	302
Dar es Salaam ... ..	2,798	365	9	597	239	28	677	347	8	399	1,952	3,411
Dodoma ... ..	352	15	2	226	9	5	100	50	1	37	185	378
Iringa ... ..	102	1	24	1	—	1	33	3	—	—	90	127
Kilwa ... ..	275	7	6	167	9	4	89	8	2	14	180	297
Kondoa-Irangi ... ..	70	2	1	108	1	7	17	4	—	13	33	74
Lindi ... ..	480	22	4	15	10	5	199	12	1	66	233	516
Mahenge ... ..	29	—	2	1	—	—	12	1	1	4	13	31
Morogoro ... ..	361	18	—	45	14	12	116	25	3	48	189	393
Moshi ... ..	247	30	—	—	8	1	73	34	—	40	137	285
Mwanza ... ..	783	22	7	188	19	15	297	13	4	86	415	830
Pangani ... ..	272	10	18	506	11	11	94	6	5	22	173	311
Rufiji ... ..	169	—	—	196	1	—	75	5	—	7	83	170
Rungwe ... ..	11	1	5	10	1	—	13	3	—	—	2	18
Songea ... ..	14	—	—	24	—	—	7	2	—	1	4	14
Tabora ... ..	757	40	22	372	4	9	268	85	—	133	328	823
Tanga ... ..	1,300	192	7	910	38	12	333	148	13	293	738	1,537
Ufipa ... ..	5	—	—	17	2	—	4	3	—	—	—	7
Usambara ... ..	308	7	—	14	2	2	127	12	—	54	122	317
Kigoma ... ..	262	23	11	163	2	1	82	21	1	47	146	298
Unclassified ... ..	1	—	—	—	—	—	1	—	—	—	—	1
TOTALS ... ..	9,411	708	352	4,041	308	188	2,869	804	44	1,384	5,661	10,950

# APPENDIX III

## ROADS

### PUBLIC WORKS DEPARTMENT CLASSIFICATION

Roads.	Class.	Length open for traffic.	Roads.	Class.	Length open for traffic.
		Miles.			Miles.
Tanga to Jasin	B	45	* Morogoro to Mikese	B	22
Tanga to Muheza	B	32	* Morogoro to Mlali	B	16
Tanga to Pangani	B	30	* Morogoro to Turiani	C	80
Tanga Township	A	4	* Kisaki to Mahenge	C	141
Muheza to Amani	B	24	* Kilosa to Mahenge	B	150
Korogwe to Vugeri	B	12	* Mahenge to Mahenge		
Korogwe to Kilosa	B	190	* Songea	C	170
Mombo to Lushoto	A	21	* Kilosa to Iringa	B	154
Moshi to Taveta	B	24	* Iringa to Tukuyu	B	220
Moshi to Arusha	B	52	* Gulwe to Mpwapwa	B	11
Pangani to Handeni	C	120	* Tabora to Mwanza <i>via</i> Kahama and Shinyanga	B	246
Handeni to Kondoa Irangi	B	185	* Tabora to Ndala	B	35
Dar es Salaam to Bagamoyo	C	40	* Tabora to Urambo	B	62
Dar es Salaam to Utete	C	110	* Tabora to Sikonge	B	45
Dar es Salaam Township	A	19	* Tabora Township	A	5
do. do.	B	8	* do. do.	B	11
Bagamoyo to Pangani <i>via</i> Sadani	C	80	* Kigoma Township	A	3
Mikese to Kisaki	B	54	* Kigoma to Ujiji	A	5

\* Passable for motor cars... 2,455 miles.

Class A—Metalled ... 57 "

" B—Earth Roads ... 3,236 "

" C—Native Tracks... 2,683 "

APPENDIX III.—*continued*

Roads.	Class.	Length open for traffic.		Roads.	Class.	Length open for traffic.	
		Miles.	*			Miles.	*
Mwanza Township	B	5	*	Newala to Mtama	B	55	*
Mwanza to Ikoma	C	150	*	Dodoma to Iringa	C	158	*
Mwanza to Musoma	C	126	*	Dodoma to Kondoa-Irangi	B	100	*
Musoma to Ikoma	C	100	*	Kondoa-Irangi to Singida	B	81	*
Bukoba to Biharamulo	B	89	*	Kondoa Irangi to Arusha	B	167	*
Biharamulo to Nyamirabo Bay	B	32	*	Singida to Mkalama	B	55	*
Biharamulo to Kibondo	C	65	*	Itigi to Singida	B	72	*
Kasanga to Kiranda	C	170	*	Mkalama to Sekenke	B	40	*
Kasanga to Namanyere	C	76	*	Saranda to Kilimatinde	B	12	*
Kasanga to Tukuyu	C	240	*	Saranda to Kondoa-Irangi	B	86	*
Tukuyu to Mwaya	B	33	*	Singida to Sekenke	B	60	*
Tukuyu to Masoko	B	8	*	Tunduru to Undis (Rovuma R.)	B	50	*
Masoko to Tandala	C	38	*	Mikindani to Ndumbwe	B	20	*
Tukuyu to Fife	C	75	*	Masasi to Ngomano (Rovuma R.)	B	80	*
Kilwa to Songea via Liwali	C	310	*	Songea to Manda Bay	C	88	*
Lindi to Songea and Tunduru	B	350	*	Songea to Milo	C	106	*
Masasi to Newala	B	58	*	Songea to Tukuyu	C	240	*
Newala to Mikindani	B	95	*				

\* Passable for motor cars... 2,455 miles.  
 Class A—Metalled ... 57 "  
 .. B—Earth Roads ... 3,236 "  
 .. C—Native Tracks... 2,683 "

## APPENDIX IV

### ADMINISTRATIVE DISTRICTS AND SUB-DISTRICTS

DISTRICT.	SUB-DISTRICTS.
Arusha ... ..	Mbulu
Bagamoyo ... ..	—
Bukoba ... ..	Biharamulo
Dar es Salaam ... ..	Mafia Island
Dodoma ... ..	Manyoni
	Singida
Iringa ... ..	Malangali
Kigoma ... ..	Ujiji
	Kasulo
Kilwa ... ..	Kibata
	Liwale
Kondoa-Irangi ... ..	Mkalama
Lindi ... ..	Mikindani
	Masasi
	Newala
	Tunduru
Mahenge ... ..	Mkasu
Morogoro ... ..	Kilosa
Moshi ... ..	—
Mwanza ... ..	Musoma
Pangani ... ..	Handeni
Rufiji (Utete) ... ..	—
Rungwe (Tukuyu) ... ..	Igali
Songea ... ..	Lipumba
Tabora ... ..	Shinyanga
	Kahama
Tanga ... ..	—
Ufipa (Namanyere) ... ..	Kasanga
Usambara (Lushoto) ... ..	—

# APPENDIX V

## DISPOSAL OF EX-ENEMY PROPERTY

### SUMMARY

#### OF

LAND SALES UP TO AND INCLUDING 20TH NOVEMBER, 1923

Nationality of Purchasers.	No. of Lots Bought.	Ha.	Ar.	Qm.	Per cent. of Total.	Price paid. £
British, Europeans ...	266	187,774	63	43	58·4	483,579½
,,    Indians ...	199	67,829	27	95	21·0	374,738½
Greeks ...	93	31,903	28	80	9·8	73,872
Goans ...	29	13,571	22	36	4·3	12,855
Italians ...	17	1,824	34	73	0·5	6,420
Syrians ...	10	2,013	70	84	0·6	12,475
Arabs ...	7	2,347	82	89	0·7	6,990
Danes ...	7	3,852	12	28	1·3	4,260
French ...	8	4,724	42	57	1·4	2,675
Roumanians ...	5	2,085	—	—	0·6	8,590
Americans ...	3	1,655	20	—	0·5	1,705
Esthonians ...	9	1,845	—	—	0·5	345
Belgians ...	1	78	84	—	0·02	550
Russians ...	1	266	—	—	0·08	25
Poles ...	3	985	—	—	0·3	80
<b>TOTAL ...</b>	<b>658</b>	<b>322,755</b>	<b>89</b>	<b>85</b>	<b>—</b>	<b>989,160</b>

NOTE.—The above figures do not include mines and mining claims sold. Under British Europeans are included the purchases of the Amboni Sisal Estates, which are concerned with both British and Foreign capital.

APPENDIX VI  
MEAN RAINFALL IN INCHES  
SEA COAST

—	Tanga.	Pangani.	Sadani.	Bagamoyo.	Dar es Salaam.	Salala.	Chole (Mafia).	Kilwa Kiv.	Lindi.	Mikindani.
No. of years' observations.	17	10·7	8·2	13·8	18·5	6·0	7·2	12·7	12·5	8·3
150 January ... ..	1·51	2·33	3·03	3·07	3·14	4·05	5·20	5·04	4·42	4·92
February ... ..	2·02	1·32	1·81	1·42	1·89	3·58	4·35	6·11	4·69	5·16
March ... ..	3·96	4·21	4·33	4·35	5·15	5·04	7·31	8·02	6·27	6·26
April ... ..	11·63	10·60	7·44	9·70	11·19	13·66	13·86	8·02	5·30	6·10
May ... ..	13·39	10·43	5·27	7·36	7·48	5·00	7·33	3·87	1·56	1·65
June ... ..	3·37	2·25	1·93	1·40	1·22	1·93	2·71	0·49	0·14	0·47
July ... ..	4·42	3·11	0·98	1·34	1·65	1·14	1·45	0·64	0·15	0·35
August ... ..	3·08	1·40	1·57	1·26	1·12	0·35	0·81	0·60	0·40	0·32
September ... ..	3·19	1·42	0·67	0·86	1·19	0·55	0·39	0·61	0·40	0·59
October ... ..	3·88	2·47	1·97	1·41	1·16	1·06	0·95	0·49	0·84	0·39
November ... ..	8·33	4·69	4·76	3·53	2·80	2·32	2·09	1·50	2·52	1·14
December ... ..	2·30	2·96	4·14	3·92	3·67	4·05	3·78	4·83	5·04	7·71
Year ... ..	61·08	47·19	37·92	39·62	41·66	42·76	50·23	40·22	31·73	35·08
Largest ... ..	83·59	69·41	54·02	68·75	56·85	—	—	—	—	69·02
Smallest ... ..	23·39	31·37	22·05	23·51	19·41	—	—	—	—	22·17



## COAST HINTERLAND : NGURU AND ULUGURU

—	Lewa.	Kwam- doe (Hand.)	Man- dera.	Mhonda.	Moro- rogo.	Kisaki.	Kiser- awe.	Mohoro.	Liwale.	Masasi.
Number of years' observations ...	15·3	4·6	6·0	6·0	7·5	6·7	8·6	12·1	7·0	4·0
January ...	1·61	3·19	2·20	8·77	4·10	4·76	4·49	5·70	9·72	4·68
February ...	2·16	1·30	2·40	6·18	3·30	2·91	3·31	4·41	7·09	5·50
March ...	4·29	4·53	5·20	10·90	8·43	6·06	5·62	6·69	6·26	9·56
April ...	10·74	7·01	7·87	15·32	10·19	9·91	11·37	10·15	4·01	4·51
May ...	11·21	3·74	3·78	5·12	3·38	7·51	6·06	3·62	0·59	0·58
June ...	2·20	0·59	1·53	2·52	1·88	0·98	1·10	1·02	0·04	0·18
July ...	3·42	0·94	1·14	2·60	1·14	1·02	1·30	0·47	0·16	—
August ...	2·79	0·67	0·71	2·60	0·37	0·35	0·67	1·02	0·04	0·05
September ...	2·64	1·30	1·14	1·30	0·71	0·55	1·22	0·75	0·27	—
October ...	3·98	0·94	1·34	3·03	0·95	0·75	2·64	1·22	0·39	0·34
November ...	7·51	2·56	3·46	3·78	1·25	1·53	3·90	3·42	0·90	0·80
December ...	4·01	3·74	3·38	8·50	5·76	2·36	5·00	5·12	5·70	3·96
Year ...	56·61	30·56	34·17	70·63	41·46	38·74	46·70	43·62	35·20	—
Largest ...	72·71	36·07	—	90·04	62·68	48·90	69·53	53·27	48·58	38·11
Smallest ...	38·82	17·96	—	68·42	25·35	26·25	32·63	29·73	31·02	23·86

## APPENDIX VI.—continued

## USAMBARA, PARE, KILIMANJARO, MERU

—	Msalabani Magila.	Amani.	Lutindi.	Balangai.	Kwai.	Mlalo.	Mtai.	Mamba.	Moshi.	Arusha.
Number of years' observations ...	12·6	9·5	7·5	8·3	12·4	6·3	8·2	5·0	11·1	7·7
January ...	2·48	3·78	5·36	3·27	3·46	5·78	2·05	3·66	1·43	2·99
February ...	2·56	2·29	3·11	4·21	3·46	3·94	1·92	3·62	1·45	2·95
March ...	4·61	6·20	7·41	7·55	4·18	5·08	2·32	6·34	4·16	8·94
April ...	10·20	14·78	24·37	17·88	5·55	21·88	5·04	10·20	13·46	13·35
May ...	11·61	13·30	22·12	21·73	4·61	2·95	4·88	8·70	10·98	6·61
June ...	1·97	4·50	3·50	4·29	1·14	0·75	0·62	2·68	2·30	1·38
July ...	3·62	4·40	4·17	7·01	1·34	0·35	0·70	4·53	1·97	0·71
August ...	2·01	3·27	2·64	3·15	0·27	0·35	0·60	2·68	0·94	0·35
September ...	2·24	4·31	3·66	2·95	0·51	0·27	0·60	2·60	0·91	0·59
October ...	4·41	6·60	7·32	5·91	1·53	2·52	1·14	2·95	1·01	1·89
November ...	5·59	8·30	6·42	7·13	3·94	10·87	3·85	7·05	3·02	5·43
December ...	4·92	6·61	5·51	5·83	4·37	11·22	5·16	5·47	2·57	3·70
Year ...	56·22	78·34	95·59	90·91	34·36	65·96	28·88	60·48	44·20	48·89
Largest ...	68·03	93·82	124·89	142·68	43·74	64·29	42·56	—	—	68·31
Smallest ...	28·47	53·82	59·49	49·37	19·41	34·77	24·53	—	—	40·95

## INLAND TABLELAND, USAGARA, UHEHE, UPOGORO, UNGONI, UNYIKA

	Ikoma.	Kondoa- Irangi.	Kilosa.	Mpwap- wa.	Kilima- tinde.	Tabora.	Tozama- ganga, near Iringa.	Ma- henge.	Songea.	Itaka, Unyika.
Number of years' observations ...	12·6	9·5	7·5	8·3	12·4	7·3	8·2	6·0	10·1	7·7
January ...	2·05	3·75	5·44	5·20	4·21	5·18	5·32	12·65	9·67	8·10
February ...	3·06	4·01	5·23	4·60	3·62	4·68	4·76	8·65	10·55	6·14
March ...	2·91	4·26	4·76	3·94	4·68	6·07	4·53	14·08	11·33	6·34
April ...	6·93	3·17	5·58	2·87	4·05	5·43	2·32	11·92	5·86	4·84
May ...	1·85	0·55	2·32	0·47	0·55	0·71	0·27	4·06	0·71	2·68
June ...	0·51	0·03	0·35	0·04	0·08	0·17	0·04	4·16	—	0·08
July ...	0·55	—	0·75	0·04	—	—	—	0·99	0·04	0·08
August ...	1·97	—	0·59	—	—	0·05	—	0·81	0·16	—
September ...	1·50	—	0·71	—	—	0·17	0·04	0·84	0·16	0·08
October ...	1·73	0·07	0·83	0·04	0·04	0·59	0·08	3·07	1·69	0·16
November ...	1·73	0·64	1·93	0·94	0·75	3·02	0·94	2·03	1·38	0·98
December ...	2·87	4·95	2·83	4·57	4·41	5·05	2·32	8·78	6·62	7·94
Year ...	28·26	21·43	31·34	22·71	22·40	31·02	20·63	72·04	48·19	37·60
Largest ...	32·63	—	38·15	30·36	25·83	47·28	24·33	79·88	60·75	49·52
Smallest ...	27·29	—	29·78	13·66	18·58	15·59	15·79	62·05	40·16	30·27

APPENDIX VI. — *continued*

## LAKE DISTRICT

	Shirati.	Neuwied on Ukerewe.	Mwanza.	Bukoba.	Ujiji.	Kasanga.	Tukuyu.	Mwaya.
Number of years' observations ...	7·6	5·2	10·4	8·0	8·6	5·0	7·6	6·7
January ... ..	1·76	5·47	2·61	3·70	4·38	5·94	9·96	5·04
February ... ..	2·36	2·72	3·28	5·20	4·90	6·50	8·50	5·75
March ... ..	2·36	5·67	5·32	8·31	5·18	4·68	15·00	15·16
April ... ..	5·55	11·77	10·35	15·47	6·06	2·71	15·83	30·55
May ... ..	5·83	4·33	3·33	12·44	1·84	0·47	13·31	18·27
June ... ..	1·22	1·22	1·31	1·61	0·17	0·08	2·09	6·46
July ... ..	0·59	0·20	0·08	1·77	—	—	2·13	2·69
August ... ..	0·35	3·86	0·95	2·36	—	—	1·81	1·65
September ... ..	0·87	0·79	1·92	3·50	0·57	—	1·53	0·16
October ... ..	1·42	4·53	3·05	4·84	1·51	0·20	3·62	1·34
November ... ..	2·05	5·75	4·66	8·62	3·70	2·24	3·27	3·35
December ... ..	2·72	6·89	4·84	6·89	4·58	5·63	6·46	6·81
Year ... ..	27·08	53·19	41·70	74·72	32·89	28·47	83·51	97·20
Largest ... ..	38·39	61·46	48·23	—	—	—	100·04	94·92
Smallest ... ..	22·99	48·74	36·42	—	—	—	73·11	72·05

# APPENDIX VII

## SCHEDULES FOR GAME LICENCES

### THE FIRST SCHEDULE

(Visitor's or Resident's Full or Temporary Licence)

Animals of which, in all, including their sub-species, not more than the numbers herein stated may be killed under the authority of a Visitor's or Resident's Full or Temporary Licence.

Provided that, except when one only of a species may be killed, each female killed shall for the purposes of both Full and Temporary Licences count as two animals.

		Number which may be killed under a Temporary Licence	Number which may be killed under a Full Licence
1. Black Rhinoceros	<i>Rhinoceros bicornis</i>	1	2
2. Hippopotamus	<i>Hippopotamus amphibius</i>	2	4
3. Roan Antelope	<i>Hippotragus equinus</i>	1	3
(In Tabora or Ufipa districts holders of a Resident's Full Licence may shoot an additional three Roan Antelopes, and holders of a Resident's Temporary Licence may shoot an additional two Roan Antelopes.)			
4. Sable Antelope	<i>Hippotragus niger</i>	2	4
5. Fringe-eared Oryx	<i>Oryx callotis</i>	1	3
6. Topi	<i>Damaliscus horrigum</i>		
	<i>jimela</i>	3	5
7. Wildebeest	<i>Gorgon species</i>	3	
8. Coke's Hartebeest	<i>Bubalis cokei</i>	3	20
9. Lichtenstein's Hartebeest	<i>B. lichtensteini</i>	3	
10. Lelwel Hartebeest, including Jackson's	<i>Bubalis lelwel</i>	2	4
11. Buffalo	<i>Bos cafer</i>	3	6
12. Bushbuck	<i>Tragelaphus scriptus</i>	4	15
13. Situtunga	<i>Tragelaphus spekei</i>	1	2
14. Lesser Kudu (males only)	<i>Strepsiceros imberbis</i>	1	3
15. Greater Kudu (males only)	<i>Strepsiceros strepsiceros</i>	1	2
16. Eland	<i>Taurotragus oryx</i>	2	4
17. Reedbuck	<i>R. redunca and arundinum</i>		
18. Mountain Reedbuck, including Chanler's	<i>Oreodorcas fulvorusfula</i>	4	12
19. Defassa Waterbuck	<i>Kobus defassa</i>	2	4
20. Common Waterbuck	<i>Kobus ellipsiprymnus</i>	3	6
21. Puku	<i>Kobus vardoni</i>	3	6
22. Kob of remaining species	<i>Kobus kob thomasi, &amp;c.</i>	1	2
23. Red Forest Duiker, including Harvey's	<i>Cephalophus natalensis,</i> sub-species	4	10
24. Abbott's Duiker	<i>Cephalophus spadix</i>	—	1
25. Blue Duiker	<i>Cephalophus monticoal</i>	6	15
26. Common Duiker	<i>Sylvicapra grimmii</i>	4	15

APPENDIX VII—continued.

		Temporary Licence	Full Licence
27. Pigmy Antelope or Suni	<i>Neotragus moschatus</i>	6	15
28. Oribi, all species, combd.	<i>Ourebia species</i>	2	6
29. Steinbuck, both species combined	<i>Raphiceros species</i>	3	10
30. Klipspringer	<i>Oreotragus oreotragus</i>	2	4
31. Grant's Gazelle	<i>Gazella granti</i>	4	8
32. Thomson's Gazelle	<i>Gazella thomsoni</i>	4	14
33. Gerenuk (males only)	<i>Lithocranius Walleri</i>	1	2
34. Impalla	<i>Aepyceros melampus</i>	4	10
35. Dikdik, all species, combined	<i>Rhynchotragus species</i>	6	20
36. Common or Quagga Zebra	<i>Equus quagga</i>	3	15
37. Colobus, all kinds combined	<i>Colopus species</i>	2	4
38. " Kima " or " Sykes " Monkey	<i>Cercopithecus alboqularis</i>	5	10
39. Ostrich	<i>Struthio species</i>	1	2

THE SECOND SCHEDULE

(Resident's Full Licence)

Animals of which, in addition to those specified in the First Schedule, an unlimited number may be shot under the authority of a Resident's Full Licence:—

- (1) Bushbuck, males.
- (2) Common Duiker, both sexes.
- (3) Buffalo and Hippopotamus in areas that may from time to time be defined by the Governor.

THE THIRD SCHEDULE

(Elephant and Giraffe Licence)

Animals of which not more than the number herein stated may be killed under the authority of an Elephant and Giraffe Licence.

Two elephants, or, if allowed by regulation, three.

One Bull Giraffe.

No elephant shall be knowingly hunted under the authority of an Elephant and Giraffe Licence unless it has at least one tusk weighing 30 lb. or more, or such other weight as may be prescribed by regulation, and any tusk which is found to be less than the weight aforesaid shall be the property of the Government.

Unless otherwise prescribed, an Elephant and Giraffe Licence may be granted only to the holder of a Visitor's or Resident's Full Licence, and unless otherwise prescribed, no person shall, during the period of his Visitor's or Resident's Full Licence, be licensed to kill more than one giraffe and the number of elephants specified above.

The holder of a Game Licence may, notwithstanding anything to the contrary contained in any regulations issued under the Game Preservation Ordinance, 1921, on payment of the fees prescribed in the Schedule hereto, be granted an Elephant and Giraffe Licence to hunt elephants not exceeding the number specified in the said Schedule.

An Elephant and Giraffe Licence shall expire on the same date as the Game Licence in respect of which it was granted.

APPENDIX VII—*continued.*

		Schedule					
Visitor's Full Licence :							
1st elephant	...	...	...	...	...	...	Shs. 200.
2nd elephant	...	...	...	...	...	...	Shs. 300.
3rd elephant	...	...	...	...	...	...	Shs. 300.
Resident's Full Licence :							
1st elephant	...	...	...	...	...	...	Shs. 100.
2nd elephant	...	...	...	...	...	...	Shs. 150.
3rd elephant	...	...	...	...	...	...	Shs. 200.
Visitor's Temporary Licence :							
1 elephant	...	...	...	...	...	...	Shs. 200.
Resident's Temporary Licence :							
1 elephant	...	...	...	...	...	...	Shs. 100.
Resident's Minor Licence :							
1 elephant	...	...	...	...	...	...	Shs. 100.

THE FOURTH SCHEDULE

(Resident's Minor Licence)

Animals of which, in all, including their sub-species, not more than the numbers herein stated may be killed under the authority of a Resident's Minor Licence.

Provided that, except when one only of a species may be killed, each female shall count as two animals.

Hartebeest of all species, and Wildebeest combined	...	15
Topi	...	5
Roan Antelope in Tabora and Ufipa districts only	...	4
Bushbuck	...	15
Reedbuck, all species combined	...	8
Waterbuck, both species combined	...	4
Puku in Mahenge and Rungwe districts	...	5
Blue Duiker, Common Duiker and Suni, of each	...	15
Oribi, all species combined	...	4
Steinbuck and Thomson's Gazelle, of each	...	8
Impalla	...	6
Dikdik	...	20
Zebra	...	12
Eland	...	1
Buffalo	...	1

THE FIFTH SCHEDULE

(Governor's Licence)

Animals which may only be hunted under the authority of a Governor's Licence:—

- (1) All Antelopes not specified in the 1st, 2nd or 4th Schedules hereto.
- (2) All females of Giraffe, Greater and Lesser Kudu, Gerenuk and Situtunga.
- (3) Fish-Eagle, Wahlberg's Eagle, Buzzard-Eagle (Asturinula), Secretary Bird, Ground Hornbill, and any kind of Vulture, Stork (including Marabout), Kestrel, Owl and Egret.
- (4) Gorilla and Chimpanzee.

## APPENDIX VIII

### NATIVE WOODS: THEIR DISTRIBUTION AND EXPLOITATION

	Acres.	Sq. miles.
Area.—Government Forest Reserves ...	2,419,500	3,780
Area of Forests not yet proclaimed Reserves (estimated) ... ..	100,000	156
Area of Privately-owned Forests (approx.)	35,000	55
	2,554,500	3,991

#### PRINCIPAL TIMBER TREES OF THE MAIN FOREST TYPES

(a) In the Tropical and Sub-Tropical forests:—

Mkulu (*Ocotea usambarensis*), Mkomohoyo (*Pygeum africanum*), Mkuka (*Royena* sp.), Mynassa (*Piptadenia* sp.), Mula (*Parinarium Holstii*), Mrie (*Louoa* sp.), Mshai (*Albizzia fastigiata*), Lolyondo (*Linociera* sp.), Msambu (*Allanblackia Stuhlmannii*).

(b) In the Cedar Forest:—

Cedar (*Juniperus procera*), Ndele (*Warburgia Stuhlmannii*) Senefu (*Olea chrysophylla*), Ngwe (*Olea Hochstetteri*), Mse (*Podocarpus usambarensis* and *P. milanjanus*).

(c) Near Coast and Lower Hills:—

Msandarusi (*Trachylebium verrucosum*), Mkongo (*Azelia cuanzensis*), Mahogany (*Khaya senegalensis*), Mvule (*Chlorophora excelsa*), Mula (*Parinarium Holstii*), Mshai (*Albizzia fastigiata*), "Ebony" (*Dalbergia melanoxylon*), Mkwaju (*Tamarindus indica*), Msindi (*Diospyros mespiliformis*), Mroma (*Maerua* sp.), Msaur (*Louoa* sp.), Mkoñ (*Piptadenia Schweinfurthii*), Mkunguni (*Trichilia* sp.), (*Brachyleana Hutchinsii*).

(d) In the Savannah:—

Mninga (*Pterocarpus Bussei* and *P. chrysothryx*), *Brachystegia appendiculata*.

(e) Mangroves:—

*Rhizophora mucronata*, *Avicennia officinalis*, *Bruguiera gymnorhiza*, *Carapa moluccensis*, *Ceriops candolleana*, *Sonneratia caseolaris* and *Heritiera littoralis*.

#### FOREST PRODUCE EXPLOITED IN 1921 AND 1922

	Timber, cubic feet.	Poles, almost entirely mangroves, No.	Fuel, stacked, cubic feet.	Bamboos, No.	Withes (Reeds), No.	Fibre (Umondo), tons. (Approx.)
1921	34,816	497,520	3,301,328	1,620	148,790	0.38
1922	74,874	287,575	3,844,661	6,326	374,885	4.1



## APPENDIX IX

### BOOKS HAVING REFERENCE TO THE TERRITORY

- Across Africa. Commander V. Lovett Cameron, London, 1878.  
 A History of the Colonisation of Africa. Sir H. H. Johnstone.  
 3rd Edition, Cambridge, 1913.  
 Am Tendaguru. Dr. Edward Hennig. 1912.  
 Ancient Civilisations of Eastern Africa. H. E. O'Neill. (Scottish  
 Geographical Magazine, 1886.)  
 Anleitung zum Felddienst in Deutsch-Ostafrika. German Official.  
 Annual Medical Report, Tanganyika Territory, 1921.  
 Anthropologie der Nord-Nyasa Länder. Dr. F. Fulleborn. 1902.  
 A Survey of the Ethnography of Africa. (Journal of the Royal  
 Anthropological Institute, Vol. XLIII., London, 1913.)  
 Bergwesen Verordnung in D.O.A. von Roy. Dar es Salaam.  
 Besiedlungsfähigkeit Deutsch Ostafrikas. A. Leuc. Leipzig, 1904.  
 British East Africa. Brade

Any book mentioned in this Bibliography is obtainable from Messrs. Williams & Norgate, 14, Henrietta Street, Covent Garden, London, W.C.2, Publishers and Importers of Foreign Books, who have been appointed Official Agents to the Tanganyika Section of The British Empire Exhibition.

- Der Pflanzenw. v. Ost-Afrika. (1909) Leipzig.  
 es Salaam.  
 Deutschlands Kolonien. K. Hassart. 2nd Edition. German East  
 Africa, pp. 235-318. Leipzig, 1910.  
 Deutschlands Kolonien. Rochus Schmidt. 2 vols. Berlin, 1895-6.  
 Deutsch-Ostafrika. H. Fenck. Berlin, 1909.  
 \*Deutsch-Ostafrika. Pubd. Dietrich Reimer. Berlin. (Bd. V. Th. A, B  
 and C Die Pflanzenwelt Ost-Afrikas und der Nachbargebiete.  
 Engler. Bd. X. Beiträge zur Kulturgeschichte von Ostafrika.  
 Stuhlmann.)  
 Deutsch Ostafrika. Hans Zache. Sonderabdruck als Deutschland  
 als Kolonial-Macht.  
 Deutsch Ostafrika als Siedlungsgebiet für Europaer, Bericht.  
 Dr. von Linderquist Kommission, 1908. München and Leipzig,  
 1912.  
 Deutsch Ostafrika im Aufstand 1905-1906. Graf von Götzen, 1909.

- Die Besiedlung Deutsch Ostafrikas. Paul Samassa. Leipzig, 1909.  
 Die Deutsche Kolonialzeitung.  
 Die Deutschen Schutzgebiete in Afrika und der Sudsee (Jahresberichte). German Official.  
 Die Eisenbahnen im Tropischen Afrika. Leipzig, 1902.  
 Die Insel Mafia. Oscar Baumann. 1896.  
 Die Jagdbare Vögel Deutsch Ostafrikas. Professor Dr. Ant. Reichenow, Berlin, 1909.  
 Die Massai. M. Merker. 1904.  
 Die Ostafrikanische-Bruchstufe. Professor Dr. Karl Uhlig. (Mitteilungen aus den Deutschen Schutzgebieten, Ergänzungsheft Nr. 2. Berlin, 1909.)  
 Die Portugiesenzeit von Deutsch- und Englisch-Ostafrika. Justus Strandes. Berlin, 1899.  
 Die Schlangen Deutsch Ostafrikas. Dr. Sternfeld. Berlin, 1910.  
 Die Vegetationsverhältnisse der Zentral Afrikanischen Seenzone! 1909.  
 Die Wahehe. E. Nigmann. Berlin, 1908.  
 Die Wahehe (Mitteilungen aus den Deutschen Schutzgebieten Band X., 1897, Heft I.). Dr. W. Arning. Berlin, 1897.  
 Documents sur l'Histoire, la Géographie et le Commerce de l'Afrique Orientale. Charles Gullian. 3 vols. Paris, 1856.  
 Durch Afrika von Ost nach West. von Götzen. Berlin, 1895.  
 Durch Massailand zur Nilquelle. Dr. Oscar Baumann. Berlin, 1894.  
 East Africa. General J. C. Smuts. (Geographical Journal, March 1918.)  
 \*Economic Resources of the German Colonies. (Bulletin of the Imperial Institute, Vol. XII., 580; Vol. XIII., 110.)  
 Eine Akademische-Studienfahrt nach Ostafrika. Dr. Herbert Winkler und Professor Dr. Carl Zimmer. 1912.  
 Flora von Usambara Gebirgsland. Professor Dr. A. Engler. Leipzig, 1893.  
 Forschungen in Südlichen Teil D. O. Afrika. Dr. Walter Busse. Berlin, 1902.  
 Forstwirtschaft in Deutsch Ostafrika. Th. Siebenlist. Berlin, 1914.  
 Frontiers of German East Africa. F. R. Cana. (Geographical Journal, April 1916.)  
 Führer durch die Evangelische-Mission in D. O. A. Wuge-Usambara. 1914.  
 General Smuts's Campaign in East Africa. Brigadier-General J. H. V. Crowe, C.B. London, 1918.  
 German Colonial Policy. Professor M. Bonn. (United Empire, Vol. V., pp. 126-134, 1914.)  
 German East Africa. A. F. Calvert. London, 1917.  
 Geschichte der Deutschen Kolonialpolitik. Alf. Zimmermann. (East Africa, pp. 113-131, 174-183, 194-205, 247-256.) Berlin, 1914.  
 Guide to South and East Africa. Brown, A. Samler & Brown. G. Gordon. London, 1915.  
 \*Handbook of German East Africa. (Admiralty, I.D. 1055.) H.M. Stationery Office.  
 History of the Imama and Seyyids of Oman, 661-1856. Salil bin Razik. Translated by G. P. Badger. (Hakluyt Society). London, 1871.

- How I Found Livingstone. H. M. Stanley.  
 Jagd und Wildschutz in den Kolonien. Reichs-Kolonialamt, 1913.  
 Journal of the Discovery of the Source of the Nile. Captain J. II. Speke. Edinburgh, 1863.  
 Kilimanjaro and its People. Hon. C. Dundas. Witherby, London.  
 Kiziba Land und Leute. Rhese. Stuttgart, 1910.  
 Koloniale Monatsblätter.  
 L'Africa orientale tedesca. G. Bourbon dal Monte Santa Maria. 3 vols. Citta di Castello, 1915.  
 Landgrabbing (Mafia). M. L. A. G., Blackwood's Magazine, April 1916.  
 \*Le Mouvement Geographique. Organ of Belgian Interests in the Congo.  
 Liegenschaftsrecht in Deutschen-Kolonien. Pink & Hirschberg.  
 Local Statutes of German East Africa. Official. 2nd Edition. 2 vols. Tanga, 1911.  
 Mafia. Norman King. (Geographical Journal, August 1917.)  
 Militärisches Orientierungsheft für Deutsch-Ostafrika, 1911. German Official.  
 Mission von Zanguebar. Horner. Regensburg, 1877.  
 Missions Pädagogische Blätter, Heft 2. Missions-Superintendent. Stern, 1913.  
 Mitteilungen aus den deutschen Schutzgebieten (1895-1913). Supplement to the Kolonialblatt.  
 Mitteilungen über die geographischen politischen und wirtschaftlichen Verhältnisse in Grenzzone zwischen Victoria Nyanza und Kilimanjaro, 1906. Hauptmann Schlobach.  
 Negerleben in Ostafrika. Dr. Weule, 1908.  
 Notes from East Africa (Uluguru Mountains). Lieutenant E. W. Bark. Geographical Journal, October 1917.  
 Ostafrikanische Dinosaurier. Professor Dr. E. Fraas. 1908.  
 Rechte der Eingeborenen in den Kolonien. Official.  
 Rechtsverhältnisse der Deutschen Schutzgebieten. von Stengel.  
 Reise in das Massailand. Dr. G. A. Fischer.  
 \*Report on Tanganyika Territory; 1920, Cmd. 1428; 1921, Cmd. 1732; 1922.  
 \*Reports of the Department of Agriculture, Tanganyika Territory.  
 Reports of the Veterinary Department, Tanganyika Territory.  
 Tabellarische Uebersicht der Geschichte Ostafrikas. Otto Karsten. Leipzig und Heidelberg, 1879.  
 Tangaland. H. Kaerger. Berlin, 1892.  
 \*Tanganyika. (Foreign Office Historical Handbook, No. 113.) H.M. Stationery Office, 1920.  
 \*Tanganyika Territory Gazette, Vols. I. to IV., 1920-23.  
 The Africa Pilot. Part III., 1915. Admiralty.  
 The Ancient Civilisation, Trade and Commerce of East Africa. Scottish Geographical Magazine, Vol. II., No. 2, February, 1866. J. W. MacGrindle.  
 The Commerce and Navigation of the Erythrean Sea. Vincent. London, 1879.  
 The Lake Regions of Central Africa. Burton. 1860.  
 The Last Journals of Dr. David Livingstone in Central Africa. Horace Waller. 1880.

APPENDIX IX.—*continued*

- The Germans and Africa. Lewin. Evans, London.  
 The History of Kilwa. A. Strong. (Translated from the Arabic.)  
 Journal of the Royal Asiatic Society. London, 1895.  
 The Kivu Country. Sir A. Sharpe. (Geographical Journal, January  
 1916.)  
 The Land of Zinj. Captain C. H. Stigand. London, 1913.  
 \*The Masai. Hollis. London, 1905.  
 The Nile Quest. London, 1903.  
 The North Section of the Tanganyika-Nile Rift Valley. (Geographical  
 Journal, August 1917.)  
 The Rediscovered Country. S. E. White. (North-East of German  
 East Africa.) London, 1915.  
 \*The Rift Valleys and Geology of East Africa. Gregory. London,  
 1921.  
 The Rise of Our East African Empire. Sir F. D. Lugard. 2 vols.  
 Edinburgh, 1893.  
 The South-West Area of German East Africa. O. Letcher.  
 (Geographical Journal, March 1918.)  
 The Tanganyika Territory. F. S. Joelson. London, 1920.  
 The Victoria Nyanza. P. Kollman. (English edition.) London,  
 1910.  
 Thierbeobachtungen, &c., in Ostafrika. Bronsart von Scellendorf.  
 Through Masailand. Thomson. London, 1885.  
 To the Central African Lakes. Thomson. Vols. I. and II.  
 To the Mountains of the Moon. F. E. S. Moore. 1901.  
 Travels during Residence in East Africa. J. L. Krapf. (English  
 edition.) London, 1860.  
 Usambara und seine Nachbargebiete. Dr. Oscar Baumann. Berlin,  
 1891.  
 Vegetations Formationen Ostafrikas. Professor Dr. A. Engler.  
 Berlin, 1903.  
 Verordnungsrecht in Deutschen Kolonien. Dr. Emmanuel Brockhaus.  
 Was ist uns Zentral-Afrika? Emil Zimmermann. 1914.  
 Wie Deutsch-Ostafrika entstand. Leipzig, 1912.  
 Zanzibar: City, Island and Coast. Sir R. F. Burton. 2 vols.  
 London, 1872.  
 Zanzibar in Contemporary Times. R. N. Lyne. London, 1905.  
 Zur Buerteilung des Islams in D. O. A. Sonderdruck aus Kolonial-  
 Rundschau, 1913. Dr. F. O. Karstedt.

---

Among the books in the above list, compiled with the assistance of the Keeper of German Records, the publications whose titles have been marked with an asterisk are the chief among those used in the compilation of the Handbook.

---

The sections of the Handbook relating to various activities of Government have been usually supplied by the Departments concerned. That on mountaineering was kindly provided by Mr. C. Gillman, of the Railways Department, one of the few who have climbed Kilimanjaro.

The maps at the end of the Handbook were prepared in the office of the Director of Surveys.

APPENDIX X  
PUBLICATIONS IN THE TERRITORY

A.—BY GOVERNMENT

Publications.	Subscription Rates.	Whence obtainable.
Annual Report on Tanganyika Territory, 1922 ...	1s. 3d. ... ..	Government Printer, Dar es Salaam
"Tanganyika Territory Gazette," published every Friday (circulation, 750 weekly)	Shs. 0.50 per copy ... 24s. per annum ... 13s. per half year (including British Empire Postage)	As last
Vol. I., 1919-20 ... ..	30s.	
Vol. II., 1921 ... ..	30s.	
Vol. III., 1922 ... ..	30s.	
Vol. IV., 1923 ... ..	30s.	
Ordinances, Proclamations, &c. :—		Government Printer, Dar es Salaam or Crown Agents for the Colonies, 4, Millbank, Westminster, London
Vol. I., 1919-20 ... ..	10s. 6d. ... ..	
Vol. II., 1921 ... ..	12s. 6d. ... ..	
Vol. III., 1922 ... ..	12s. 6d. ... ..	
Vol. IV., 1923 ... ..	To be published early 1924	
Agricultural Report, 1922	2s. 6d.	As last
Trade Report :—		
1921 ... ..	4s. 6d.	As last
1922 ... ..	4s. 6d.	As last
1923 ... ..	To be published during 1924	As last
Non-Native Census Report, 1921	2s. 6d.	As last
Native Census Report, 1921	2s. 6d.	As last
Blue Book ... ..	15s.	As last
"Mambo Leo" (Native periodical printed in Swahili), published monthly, (circulation 10,000 monthly)	10 cents. Annual subscription, 2s. 6d., including postage	As last

B.—OTHER PUBLICATIONS

"Dar es Salaam Times" published every Saturday	Shs. 0.50 per copy ... 25s. per annum, including postage	Dar es Salaam Printing and Publishing Works, Dar es Salaam The African and Colonial Press Agency, 9 Quality Court, Chancery Lane, London, W.C. 2
--	---	---

## APPENDIX XI

### WEIGHTS AND MEASURES OF THE TERRITORY

A Weights and Measures Ordinance, 1924, has been enacted for future promulgation (see "Tanganyika Territory Gazette," V., 1924, 3). This lays it down that the primary weight, measure of capacity, measure of length and measure of surface shall be respectively the pound avoirdupois, the gallon, the yard and the square yard, as defined in the Imperial Weights and Measures Act, 1878. The parts or multiples of these units, prescribed to be employed, are those in common legal use in the United Kingdom.

The provisions of the Ordinance as to weights and measures will apply to weighing and measuring instruments.

On the procuring of standards of weight and measure for use under the Ordinance, publication of the fact in the Government Gazette will make those standards Territory Standards, of which verified copies, to be tested from time to time, may be obtained for use as secondary standards. Within twelve months from the commencement of the Ordinance (not yet effective) all weights and measures whose size permits will have to bear their denominations stamped legibly.

Local or customary measures used at present by natives may continue to be employed in trade as at present until such use is prohibited, restricted or regulated by regulation under the Ordinance.

The usual provision is made for the inspection, verification and stamping of weights and measures, and for the punishment of offences against the Ordinance and its Regulations.

## APPENDIX XII

### LISTS OF EXHIBITORS AND EXHIBITS

#### A.—PLANTING AND COMMERCIAL EXHIBITS

591

No.	Exhibitor.	Exhibit.	Remarks.	Weight. lbs. etc.
—	Arusha Coffee Planters' Association, Arusha	Coffee (4 bags) ... ..	—	—
—	H. Blunt, Shume, Usambara	1 suite of furniture ... ..	Made at Shume	—
—	Ceylon Jewellery Mart, Dar es Salaam	Carved ebony elephant, 35 ins. by 37 ins.	(For sale)	—
—	Do. do.	Carved ivory elephant, 8 ins. by 5 ins.	—	—
—	Do. do.	Carved elephant tusk, mounted on carved ebony photo frame, 35 ins. by 15 ins.	—	—
—	Do. do.	Carved ivory lobster, 10 ins. by 4 ins.	—	—
—	Karimjee, Jivanjee & Co., Tanga	Mvule timber ... ..	For making panelling and stands in the Court	50 pieces.
—	Chalmers, Guthrie & Co., Ltd., London	Beeswax, gum animi and cotton lint	Cotton from Bagamoyo	—
—	Kilimanjaro Saw Mills, Ltd., Moshi	Msaar timber, Kilimanjaro mahogany Msoo timber, "Satinwood"	Used by Shoolbred & Co. for making a table, gramophone cabinet, office arm-chair, and chair for the Tanganyika Court	—
—	Do. do.	Mooma... ..	For panelling in the Court	—

## APPENDIX XII—continued.

No.	Exhibitor.	Exhibit.	Remarks.	Weight. lbs., etc.
—	Mathradas, Nanji & Co., Lindi	Sisal ... ..	—	1 bale.
—	Max de Souza, Lindi ...	Sisal ... ..	—	—
—	Do. do. ...	Cotton... ..	—	—
—	Do. do. ...	Native products ... ..	—	—
—	Kilimanjaro Planters' As- sociation, Moshi	Parchment coffee ... ..	For sale in the Court...	30 cwt.
—	Do. do.	Cotton... ..	—	10 lb. each.
—	Meru Agricultural Society, Arusha	Wheat ... ..	3 varieties ... ..	132 lb.
—	Do. do.	Beans ... ..	2 varieties ... ..	120 lb.
—	Do. do.	Maize ... ..	—	125 lb.
—	Do. do.	Tobacco ... ..	—	5 lb.
—	Mkoe Plantation, Lindi	Sisal ... ..	—	—
—	Ranti de Silva & Bros. Dar es Salaam	Ornamental Cabinet Top in carved ebony, with a carved elephant tusk resting horizontally on a carved ebony pine grove, and fitted with two ebony elephants on each side	(For sale)	—
—	Do. do.	Dinner Gong: basement of ebony, with two carved elephant tusks supporting a silver gong attached to the tusks by a silver chain	—	—
—	Do. do.	Carved Ebony Photo Frame with an ivory tag one each side, and on the top carved hippo teeth showing pictures of ostriches	—	—
—	Do. do.	Carved Ivory Lobster ... ..	—	—



—	Do.	do.	Carved Ivory Elephant with gold nails on toes and jewelled eyes	—	—
—	Do.	do.	Carved Ivory Elephant Head, mounted on an ebony plate and with jewelled eyes	—	—
—	Do.	do.	Carved Ebony Elephant with ivory tusks	—	—
—	Do.	do.	Ebony Walking Sticks (knobbed handles)	—	100.
—	Do.	do.	Ebony Walking Sticks (carved handles)	—	8.
—	Reel & Wilson, Tanga ...		Local fur articles, trophies, photos, etc.	—	—
—	Rosehaugh & Co., Ltd. :—		Seed-cotton ... ..	1st grade hand-sorted	18½.
—	Ngerengere Estate, Morogoro		Prime Sisal ... ..	—	1 bale.
—	Do.	do.	Tow ... ..	—	Do.
—	Do.	do.	Cotton Lint ... ..	1st grade, Saw-ginned	Do.
—	Do.	do.	Do. ... ..	1st grade, Roller-ginned	Do.
—	Tanganyika Forests and Lumber Co., Ltd.		Mshwizo timber ... ..	Chair made by Shoolbred	—
—	Do.	do.	Camphor timber ... ..	For making stands in the Court	—
—	Do.	do.	Impregnated Podocarpus Sleeper (after lying in the open for 10 years).	—	—
—	Do.	do.	Turned table legs ... ..	—	4.
—	Do.	do.	Do. podocarpus ... ..	—	4.
—	Do.	do.	Wardrobe Feet ... ..	—	4.
—	Do.	do.	Do. Mziligembe ... ..	—	4.
—	Do.	do.	1 box Cedar Pencil Slate ... ..	Standard size ...	—
—	Do.	do.	Do. do. ... ..	Assorted sizes ...	—
—	Do.	do.	1 Certificate, framed... ..	Frame, M'quwe wood	—

## APPENDIX XII—continued.

No.	Exhibitor.	Exhibit.	Remarks.	Weight. lbs., etc.
—	Tanganyika Forests and Lumber Co., Ltd.	1 piece Camphor Wood ... ..	Mkulu, with view of Mills affixed	—
—	Do. do.	1 piece, M'quwe Wood ... ..	—	—
—	Do. do.	1 piece, Mshambo Wood ... ..	With two views affixed	—
—	Do. do.	Cedar Wood ... ..	With views of aerial line affixed	5 pieces.
—	Tanganyika Sisal and Produce Co., Ltd., Mombo, Tanga	Ceara Raw Rubber Flats ... ..	From Mombo Estate	10 lb.
—	Do. do.	Do. do. ... ..	From Muheza Estate	Do.
—	Do. do.	Arabian Coffee, bold	From Bulwa Estate...	Do.
—	Do. do.	Do. medium } cleaned	Do. do.	Do.
—	Do. do.	Do. small } and	Do. do.	Do.
—	Do. do.	Do. triage } graded	Do. do.	Do.
—	Do. do.	Do. peaberry ... ..	Do. do.	Do.
—	Do. do.	Robusta Coffee (parchment) ...	—	Do.
—	Do. do.	Do. (ungraded and shelled)	—	Do.
—	Bombuera Estates, Tanga (von Lekow & Paulsen)	2 Sisal plants ... ..	—	—
—	Do. do.	Sisal ... ..	—	—
—	Do. do.	Sisal Ropes ... ..	—	—
—	Do. do.	Show box made of Mvule timber ...	—	—
—	J. Zavellas, Morogoro ...	1st quality Seed Cotton (grown under irrigation).	Average sample ...	2 lb.
—	Rufiji Delta Trading Co., Dar es Salaam	2 Boritis, length 27 ft. 7 ins. and 26 ft. 9 ins. by 5 ins. diameter ...	Mangrove timber ...	—
—	Do. do.	1 Boritis, length 16 ft. 6 ins. by 3 ins. diameter	Do.	—

—	Do.	do.	1 Boritis, length 16 ft. 5 ins. by 3 ins. diameter	Do.	—
—	Do.	do.	1 Boritis, length 16 ft. 7 ins. by 3 ins. diameter	Do.	—
—	Do.	do.	1 log of Nkwaju, length 6 ft. 3 ins. 5½ ins. diameter	Do.	—
—	Do.	do.	1 log of Mshinzi length 8 ft. 7 ins. by 16 ins. diameter	Do.	—
—	Do.	do.	1 sleeper of Mehu, length 8 ft. 6 ins. by 10 ins. by 5½ ins.	Do.	—
—	Do.	do.	1 Sleeper of Mkemavi, length 8 ft. 6 ins. by 10 ins. by 5½ ins. ...	Do.	—
—	Do.	do.	2 bags Mangrove Bark ... ..	—	—
—	Korogwe Sisal Estate, Usambara.		Sisal ... ..	Prime quality	...
—	Do.	do.	Do. ... ..	1st quality	... ..
—	Do.	do.	Sisal Tow ... ..	—	—
—	Do.	do.	Sisal Ropes ... ..	—	—
—	Do.	do.	Sisal leaves conveyer ... ..	—	—
—	Sakarre Coffee Estate, Usambara.		Coffee... ..	—	—
—	(Cairns Bros.)				
—	Balangai Coffee Estate. (G. A. Tait.)		Do. ... ..	—	—
—	Conja Estate ... .. (F. E. Bradstock)		Sample of unginned Cotton... ..	—	—
—	Do.	do.	Chillies ... ..	—	—
—	Mazinde Estate ... .. (G. Jetha)		Sample of unginned Cotton... ..	—	—
—	Do.	do.	Sample of Ceara Rubber ... ..	—	—
T/8	Kibiranga Estate, Tanga		Seed Cotton ... ..	—	1 bag.
T/68	Do.	do.	Sisal Fibre ... ..	—	—
T/10	Do.	do.	Cotton Lint ... ..	—	1 bundle.
T/26	Do.	do.	Castor Oil Seed ... ..	—	1 bag.
T/11	Ngombezial Estate, Tanga		Cotton Lint ... ..	—	1 parcel.

## APPENDIX XII—continued.

	Exhibitor.	Exhibit.	Remarks.	Weight. lbs., etc.
	T/33 Ngombezial Estate, Tanga	Sisal Ropes ... ..	—	1 box.
	T/34 Do. do.	Sisal and Tow ... ..	—	Do.
	T/12 Kwahemshi Estate, Tanga	Kapok ... ..	Clean ... ..	1 bag.
	T/14 Do. do.	Kapok Seed ... ..	—	1 bag.
	T/23 Do. do.	Ceara Rubber ... ..	—	1 parcel.
	T/25 Do. do.	Castor Oil Seed ... ..	—	1 bag.
	T/13 Sigi Segoma Estate, Tanga	Kapok... ..	Clean ... ..	1 box.
	T/31 Do. do.	Black Pepper ... ..	—	Do.
	T/32 Do. do.	Cocoa Beans ... ..	—	Do.
	T/65 Mkumbara Estate, Tanga	Sisal Fibre ... ..	—	1 bundle.
	T/66 Buhuri Estate, Tanga...	Do. ... ..	—	Do.
	T/67 Ngomeni Estate, Tanga	Do. ... ..	—	Do.
	T/69 Gomba Estate, Tanga ...	Do. ... ..	—	Do.
	T/35 Kerslake, Thomas & Co., Moa	Sisal Tow ... ..	—	1 box.
	T/36 Do. do.	Copra, Coconuts, Coir ... ..	—	1 bundle.
	T/63/64 Do. do.	Sisal Fibre ... ..	—	2 bundles.
	— Kikwetu Estates, Lindi	Sisal ... ..	—	—
	— Giga Gaurax, Usambara District	1 suite of Office Furniture ... ..	Made from several local woods by native artisans	9 cases.
	— P. Lamping, Mazumbai Estate, Usambara Dis- trict	Clean Coffee ... ..	Coffee in parchment artificially dried	1 parcel.
	— Do. do.	Coffee ... ..	Peaberry ... ..	Do.
	— Do. do.	Do. ... ..	Sun-dried berries ... ..	Do.
	— Do. do.	Do. ... ..	In parchment... ..	Do.

—	D. Marcondonatos, Kilimanjaro	Do. ... ..	—	529 kgs.
—	M. & Ph. Filios, Kilimanjaro	Do. ... ..	—	859 kgs.
—	E. Meimaridis, Kilimanjaro	Do. ... ..	—	525 kgs.
—	Monnas Bros., Kilimanjaro.	Do. ... ..	—	512 kgs.
—	X. Tsiknos, Kilimanjaro	Do. ... ..	—	512 kgs.
—	K. Mailambetsos, Kilimanjaro	Do. ... ..	—	216 kgs.
—	Kilima Trading Co., Ltd., Kilimanjaro.	Do. ... ..	—	206 kgs.
—	Emmanuel & Christofis, Kilimanjaro	Do. ... ..	—	211 kgs.
—	Gerrard Bros., Kilimanjaro	Do. ... ..	—	51 kgs.
404	R. Mutopoulos, Ruvo Estate.	Sisal Fibre ... ..	—	30 lb.
405	Do. do.	Sisal Leaves ... ..	—	—
—	Amboni Estates, Tanga.	Sisal ... ..	—	—

## APPENDIX XII—continued.

## B.—EXHIBITS IN THE INDIAN DUKA

No.	Article.	Quantity.	Price Paid by Retail Shopkeepers in Dar es Salaam.	Country of Origin.
138	Chadder, 535 ... ..	1 piece ...	15s. 6d. per score of 5 pieces, size 7 yds. by 35 ins. ( $7\frac{1}{2}$ lb. score)	India.
139	Kaniki (mka) ... ..	Do. ...	26s. od. score, size 46 ins. by 66 ins. ...	England.
140	Bhura (gulabi) ... ..	Do. ...	54s. od. score, size 46 ins. by 66 ins. ...	Do.
141	Americani ... ..	Do. ...	21s. 9d. piece of 10 lb., 30 yds. by 36 ins.	Japan.
142	Chadder, 435 ... ..	Do. ...	16s od. score of 10 pieces, size $3\frac{1}{2}$ yds. by 32 ins. ( $6\frac{1}{2}$ lb. score)	India.
143	Shirting (Basto) ... ..	Do. ...	19s. od. piece, 40 yds. by 36 ins. ...	England.
144	Chadder, 4500 ... ..	Do. ...	27s. 3d. score of 10 pieces, 4 yds. by 44 ins. ( $12\frac{1}{2}$ lb. score)	India.
145	Chadder, 225 ... ..	Do. ...	21s. od. score of 10 pieces, 4 yds. by 40 ins. (10 lb. score)	Do.
146	Chadder, 2500 ... ..	Do. ...	28s. 6d. score of 10 pieces, $4\frac{1}{2}$ yds. by 44 ins. ( $12\frac{1}{2}$ lb. score)	Do.
147	Chadder, 3002 ... ..	Do. ...	32s. od. score of 10 pieces ( $1\frac{1}{2}$ lb. piece)	Do.
148	Khangas ... ..	Do. ...	32s. od. to 50s. od. according to kinds, 46 ins. by 66 ins.	England.
149	Kaniki (Sufi) ... ..	Do. ...	56s. od. to 64s. od. per score, 46 ins. by 66 ins.	Do.
150	Dhabvani ... ..	Do. ...	38s. od. per score, 46 ins. by 66 ins. ...	Do
151	Blanket ... ..	Do. ...	44s. od. to 100s. od. score, 40 ins. by 78 ins. and 60 ins. by 96 ins.	Holland.
152	Kettle ... ..	Do. ...	54s. od. per dozen ... ..	Germany.
153	Baskets ... ..	3 pieces ...	6d. each ... ..	Local make.
154 (a)	Coloured Papers (used for making ear ornaments).	1 bundle ...	6s. od. ream of 480 sheets ... ..	Germany.
154 (b)	Pocket Note-books ... ..	1 piece ...	2s. od. dozen ... ..	Do.

155 (a)	Kettle ... ..	Do. ...	40s. od. dozen ... ..	Japan.
155 (b)	Knives ... ..	Do. ...	2s. od. dozen ... ..	Germany.
155 (c)	Shell Buttons ... ..	1 card ...	2s. od. to 8s. od. gross ... ..	Japan.
156	Funnels ... ..	1 ... ..	1s. od. each ... ..	Local make
157	Grocer's shovel ... ..	1 ... ..	1s. od. each ... ..	Do.
158	Matches ... ..	1 packet ...	160s. od. case of 50 gross ... ..	Norway.
159	Do. ... ..	Do. ...	300s. od. do. do. ... ..	Sweden.
160	Do. ... ..	Do. ...	280s. od. do. do. ... ..	Do.
161	Cigarette Papers ... ..	1 box ...	600s. od. case of 300 boxes ... ..	Austria.
162	Cigarettes ... ..	Do. ...	800s. od. case of 50 boxes of 500 cigarettes	England.
163	Do. ... ..	Do. ...	800s. od. case of 25,000 cigarettes ...	Germany
164	Do. ... ..	Do. ...	1,230s. od. case of 50 boxes of 500 cigarettes	England.
165	Do. ... ..	Do. ...	800s. od. case of 25,000 cigarettes ...	America.
166	Matches ... ..	1 packet ...	272s. od. case of 50 gross boxes... ..	Austria
167	Tobacco ... ..	Do. ...	900s. od. case of 480 packets ... ..	England.
168	Do. ... ..	Do. ...	600s. od. case of 550 packets ... ..	Holland.
169	Do. ... ..	Do. ...	500s. od. do. do. ... ..	Do.
170	Mouth Organs ... ..	Do. ...	7s. 6d. dozen ... ..	Germany.
171	Bath Soaps ... ..	Do. ...	3s. od. dozen ... ..	Do.
172	Playing Cards ... ..	Do. ...	16s. od. dozen ... ..	America.
173	Copper Foil ... ..	Do. ...	5s. od. packet of 100 sheets ... ..	Germany.
174	Beads ... ..	1 string ...	Prices vary according to size and quality	Italy.
175	Needles ... ..	1 packet ...	2s. od. packet of 1,000 ... ..	Germany.
176	Beads ... ..	6 lots ...	Prices vary according to size and quality	France.
177	Sewing thread on Reels ... ..	1 reel ...	9s. od. gross ... ..	Japan
178	Cash Box ... ..	1 ... ..	6s. 6d. dozen ... ..	England.
179	Sandals ... ..	2 pairs ...	3s. od. per pair ... ..	Lamu, Afria
180	Sewing Thread ... ..	1 reel ...	9s. od. gross ... ..	Japan.
181	Enamelled Rice Plate ... ..	... ..	6s. od. dozen ... ..	Do.
182	China Cup and Saucer ... ..	1 each ...	6s. od. to 18s. od. dozen, according to quality	Holland.
183	China Bowl (small) ... ..	1 ... ..	14s. od. for 100 ... ..	Do.
184	Enamelled Mug ... ..	1 ... ..	12s. od. dozen ... ..	Japan.

## APPENDIX XII—continued.

No.	Article.	Quantity.	Price Paid by Retail Shopkeepers in Dar es Salaam.	Country of Origin.
185	Enamelled Mug ...	1 ...	9s. od. dozen	Japan.
186	Enamelled Bowl ...	1 ...	11s. od. do.	Do.
187	Do. ...	1 ...	9s. od. do.	Do.
188	China Bowl ...	1 ...	13s. od. do.	Holland.
189	Axe ...	1 ...	24s. od. to 60s. od. dozen, according to quality	England.
190	Bucket ...	1 ...	64s. od. dozen	Germany.
191	Shirting, 3940 ...	1 piece	19s. od. per piece of 40 yds.	India.
192	Khaki Stock-pot ...	Do.	2s. od. yard	England.
193	Bhura-Shiri ...	Do.	56s. od. score, size 46 ins. by 66 ins.	Do.
194	Chadder, 4680 ...	Do.	21s. 3d. score of 5 pieces, 8 yds. by 40 ins. (weight, 10 lb. score—4 chadders in a piece)	India.
195	Chadder (coloured) ...	Do.	45s. od. score, size 5 yds. by 48 ins.	India.
196	Kikoi ...	Do.	52s. 6d. score, size 36 ins. by 70 ins.	Holland.
197	Blanket, 151 ...	Do.	92s. od. score, size 48 ins. by 96 ins.	Do.
198	Fans ...	5 ...	6d. each	Local make.
199	Pocket Mirror ...	1 ...	2s. od. dozen	Japan.
200	Combs ...	3 ...	3d. each	Local make.
201	Fish Hooks ...	1 ...	2s. od. to 40s. od. thousand, according to sizes	England.
202	Cooking Spoons ...	2 ...	3d. each	Local make.
203	Key Chain with Hook ...	1 ...	12s. od. gross	Germany.
204	Leather Belt ...	1 ...	4s. od. to 18s. od. dozen, according to quality	India.
205	Pen-holders ...	1 ...	1s. od. dozen	Germany.
206	Spoons ...	1 ...	2s. od. dozen	Do.
207	Perfumery ...	1 bottle	4s. od. to 18s. od. dozen bottles	Do.
208	Tin Buttons ...	1 card	1s. od. gross	Japan.



209	Brass Rings	...	...	...	1 ...	...	2s. od. dozen	...	...	Germany.
210	Oil Measures	...	...	...	1 ...	...	6d. each	...	...	Local make.
211	Cigarette Cases	...	...	...	1 ...	...	1s. od. dozen	...	...	Germany.
212	Writing Paper	...	...	...	1 packet	...	8s. od. ream	...	...	Austria.
213	Hanging Lamp	...	...	...	1 ...	...	60s. od. dozen	...	...	Germany.
214	Black Lead Pencils	...	...	...	1 dozen	...	1s. 6d. dozen	...	...	Do.
215	Lock and Key	...	...	...	1 ...	...	4s. od. dozen	...	...	Do.
216	Safety Pins	...	...	...	1 packet	...	1s. od. gross	...	...	Do.
217	Mirrors	...	...	...	1 ...	...	6s. od. dozen	...	...	Belgium.
218	Assorted Beads	...	...	...	Bundle of	...	3d. string	...	...	Germany.
					strings					
219	Glass Beads	...	...	...	Do.	...	3d. string	...	...	Japan.
220	Oil Lamp	...	...	...	1 ...	...	6d. each	...	...	Local make.
221	Knife	...	...	...	1 ...	...	14s. od. dozen	...	...	England.
222	Chopper (Panga)	...	...	...	1 ...	...	12s. od. to 48s. od. dozen, according to size and quality	...	...	Germany.
223	Slate Pencils	...	...	...	1 ...	...	1s. 6d. for 100	...	...	Do.
224	Envelopes	...	...	...	1 packet	...	4s. od. to 10s. od. for 1,000	...	...	Do.
225	Glass Buttons	...	...	...	1 card	...	2s. od. gross	...	...	Do.
226	Hoe (Jembe)	...	...	...	1 ...	...	41s. od. for 100 (350 grammes weight)	...	...	Do.
227	Do.	...	...	...	1 ...	...	70s. od. for 100 (1,000 grammes weight) (1 case contains 50 pieces)	...	...	Do.
228	Scissors	...	...	...	1 pair	...	9s. od. dozen	...	...	Do.
229	Slate	...	...	...	1 ...	...	6s. od. dozen	...	...	Do.
230	Colours (all shades)	...	...	...	1 packet	...	5s. od. lb.	...	...	Do.
231	Enamelled Soup Plate	...	...	...	1 ...	...	7s. od. dozen	...	...	Japan.
232	China Plates	...	...	...	1 ...	...	10s. od. dozen	...	...	Holland.
233	Enamelled Basin	...	...	...	1 ...	...	20s. od. dozen	...	...	Japan.
268	Pencil	...	...	...	1 ...	...	2d. each	...	...	Do.
269	Cigar Case	...	...	...	1 ...	...	6d. each	...	...	Do.
270	Folding Mirror	...	...	...	1 ...	...	1s. 6d. each	...	...	Germany.
271	Cigarette Case	...	...	...	1 ...	...	6d. each	...	...	Japan.
272	Cigar-holders	...	...	...	2 ...	...	1d. each	...	...	Germany.
273	Razors	...	...	...	2 ...	...	3d. each	...	...	Do.
274	Rings	...	...	...	2 ...	...	6d. each	...	...	England.

## APPENDIX XII—continued.

No.	Article.	Quantity.	Prices Paid by Retail Shopkeepers in Dar es Salaam.	Country of Origin.
275	Dummy Wrist Watch ... ..	1 ... ..	6d. each ... ..	England.
276	Waistcoat Buttons ... ..	1 set ... ..	6d. set ... ..	Japan.
277	Pocket Mirror ... ..	1 ... ..	3d. each ... ..	Germany.
278	Small Lamp ... ..	1 ... ..	1s. od. each ... ..	Do.
279	Kanga ... ..	1 ... ..	4s. od. each ... ..	England.
280	Knickers, Bodice and Hat ... ..	1 each ... ..	Sold at 1s. od. each ... ..	Local make.
281	Knickers and Shirt ... ..	Do. ... ..	Do. do. ... ..	Do.
282	Hat for Natives ... ..	1 ... ..	Sold at 6d. each ... ..	Do.
283	Fly ... ..	1 ... ..	Sold at 2s. od. each ... ..	England.
284	Mats ... ..	2 ... ..	4s. od. ... ..	Local make.
285	Dish Cover ... ..	1 ... ..	1s. od. ... ..	Do.
286	Wooden Clogs ... ..	1 pair ... ..	1s. od. pair ... ..	Do.
287	Stool and Coconut Grater ... ..	1 ... ..	2s. ... ..	Do.
288	Drinking Scoops ... ..	2 ... ..	6d. each ... ..	Do.
289	Spoon ... ..	1 ... ..	3d. each ... ..	Do.
290	Small Brushes ... ..	2 ... ..	3d. each ... ..	Do.
291	Coloured Wicker Boxes ... ..	2 ... ..	3s. od. each ... ..	Aden.
292	Baskets ... ..	2 ... ..	3d. each ... ..	Local make.
293	Fans (coloured) ... ..	4 ... ..	6d. each ... ..	Do.

All the exhibits in the Indian *duka* are presented by the Indian Association, Dar es Salaam.

## C.—GOVERNMENT EXHIBITS

## A.—NATIVE AGRICULTURAL DISTRICT EXHIBITS

No.	District.	Locality or Tribe.	Exhibit.		Remarks.	Weight. lb.
			English Name.	Local Name.		
				<i>Swahili.</i>	<i>Masai name.</i>	
371	Arusha	Arusha	Beans I ...	Maharagwe	Ilmaraki	
372	"	"	" II ...	"	"	
373	"	"	" III ...	"	"	
374	"	"	Pigeon Pea ...	Mbazi ...	Ujukuu ...	
375	"	"	Beans ...	Kunde ...	Sigorio... ..	
376	"	"	Eleusine ...	Wimbi ...	Eudava ...	
377	"	"	Bonavist beans ...	Fiwi ...	Uguara ...	
378	"	"	Kidney beans ...	Maharagwe meusi	Ilmejemeje ...	
379	"	Mbulu	Sorghum (red) ...	Mtama ...	Mangwere ...	
380	"	"	Sorghum (white) ...	" ...	Awaka... ..	
381	"	"	Rice ...	Mchele... ..	Basoro... ..	
382	"	"	Eleusine ...	Wimbi ...	Bambari ...	
60	Bagamoyo	"	Beans ...	Mbazi ...	Local selling price 1d. lb.	7
61	"	"	" ...	Kunde ..	Do. 1d. lb.	8
62	"	"	" ...	Var. Sokoka ...	Do. 2d. lb.	8
63	"	"	" ...	" Rufoa ...	Do. 2½d. lb.	7½
64	"	"	" ...	" Gamti ...	Do. 2½d. lb.	7½
65	"	"	Maize ...	Karachi ...	Do. ½d. lb.	7
66	"	"	Cotton lint ...	Pamba ...	Native grown...	3
103	"	"	Gum copal ...	Sandarusi ...	—	14½
205	"	"	Cotton lint ...	Pamba ...	Native grown	2½
383	Bukoba	"	Coffee Robusta ...	Buni ...	Cleaned ...	
384	"	"	" Guatemala ...	" ...	" ...	

## APPENDIX XII—continued.

No.	District.	Locality or Tribe.	Exhibit.		Remarks.	Weight. lbs.	
			English Name.	Local Name.			
385	Bukoba	...	Coffee in cherry	...	Dried (buni) ...		
386	"	...	Chillies	...	Pilipili		
387	"	...	Seed-cotton	...	Pamba		
388	"	...	Groundnuts	...	Njugu mawe		
389	"	...	"	...	" nyasa		
390	"	...	Beans	...	Kunde		
391	"	...	Maize	...	Mahindi		
392	"	...	Millet (red and white)	...	Mtama		
393	"	...	Tobacco and cigars	...	Tumbako		
394	"	...	Ginger	...	Tangawezi		
395	"	...	Eleusine (coracan)	...	Wimbi		
396	"	...	Cassava	...	Muhogo		
397	"	...	Gum arabic	...	Gundi		
398	"	...	Beeswax	...	Nta		
399	"	...	Coffee huller	...	Kinu	Native made ...	
105	Dar es Salaam	Kisangire	Groundnuts	...	Njugu mawe	Unshelled ...	
108	"	"	"	...	" nyasa	" ...	
115	"	"	Rice	...	Mpunga	9	
116	"	"	Seed-cotton	...	Pamba	Native grown	
330	"	Mafia Is.	Cashew nuts	...	Korosho	25½	
57	Dodoma	Grown by the Wagogo and Wanyaturu	Groundnuts	...	Njugu mawe	Local price 10 lb. for 6d.	10
58	"	"	Maize	...	Mahinde	" 4d.	10½
59	"	"	Sorghum	...	Mtama	" 3d.	10
67	"	"	Millet	...	Uwele	" 3d.	10
68	"	"	Sorghum	...	Mtama	" 3d.	10

69	"	...	"	Cassava ... ..	Muhogo ... ..	per lb. ...	7 $\frac{1}{2}$
70	"	...	"	Tobacco ... ..	Tumbako ... ..	2s. per 4 $\frac{1}{2}$ lb. ...	4 $\frac{1}{2}$
71	"	...	"	Groundnuts ... ..	Karanga ... ..	1 $\frac{1}{2}$ d. per lb. ...	9 $\frac{1}{2}$
90	Iringa	...	...	Hemp rope ... ..	Kamba ya Bangi		17 $\frac{1}{2}$
	"	...	...	Nests of the communal silkworm <i>Diapalpus congregarius</i>			
204	"	...	...	Silkworm cocoons ...			18
119	Kigoma	...	Ujiji...	Salt ... ..	Kihija ya chumvi		346
109	"	...	" ...	Groundnuts ... ..	Njugu nyasa	Presented by Hilali b. Ali.	2 $\frac{1}{2}$
110	"	...	" ...	Palm kernels ... ..	Chikichiki ...		27
111	"	...	" ...	Pods of Kapok ... ..	Sufi ... ..		1 $\frac{1}{2}$
112	"	...	" ...	Rice ... ..	Mpunga ... ..	Presented by Suleman Premji	10
91	"	...	...	Groundnuts No. 2 ...	Karanga ...		6 $\frac{1}{2}$
95	"	...	...	Groundnuts No. 1 ...	"		6 $\frac{1}{2}$
43	Kilwa	...	...	Cotton lint ... ..	Pamba ...		5 $\frac{1}{2}$
44	"	...	...	" seed ... ..	Mbegu ya pamba		10 $\frac{1}{2}$
100	"	...	Kibata ...	Rice ... ..	Mchele... ..		9
237	Kondoa Irangi	...	Mkalama ...	Groundnuts (unshelled)	Njugu nyasa ...	$\frac{1}{2}$ d. per lb. ...	1
248	Lindi	...	Mikindani ...	Seed-cotton ... ..	Pamba ...	1st grade, native grown. Sold at 3d. lb.	6
240	"	...	" ...	" lint ... ..	"		4
250	"	...	" ...	Cotton lint ... ..	"	1st grade, native grown. Sold at 10 $\frac{1}{2}$ d. lb.	2 $\frac{1}{2}$
251	"	...	" ...	" ... ..	"		2 $\frac{1}{2}$
252	"	...	" (Rovuma).	Seed-cotton ... ..	"	1st grade, native grown. Sold at 3d. lb. Local price	6 $\frac{1}{2}$

## APPENDIX XII—continued.

No.	District.	Locality or Tribe.	Exhibit.		Remarks.	Weight, lbs.
			English Name.	Local Name.		
311	Lindi ...	...	Tobacco ...	Tumbako ...	5 lb. for 6d. ...	7
312	"	...	Millet ...	Mtama ...	4s. for 100 lb....	14
313	"	...	Beeswax ...	Mta ...	22s. for 35 lb....	6
314	"	...	Groundnuts ...	Njugu mawe ...	8s. for 100 lb....	15
315	"	...	Simsim ...	Ufuta ...	18s. for 100 lb.	
316	"	...	Gum copal, underground (uncleaned)	Sandarusi ...	26s. for 35 lb....	8
317	"	...	Gum copal, surface (uncleaned)	" ...	13s. for 35 lb....	5
318	"	...	Maize ...	Mahindi ...	3s. for 100 lb....	11
319	"	...	Bullrush millet ...	Mawele ...	4s. " ...	15
320	"	...	Jerusalem pea ...	" ...	9s. " ...	15
321	"	...	Rice (hulled) ...	Mchele (Bungala var.)	11s. " ...	14
322	"	...	Bonavist bean ...	Fiwi ...	9s. " ...	14½
323	"	...	Pigeon pea ...	Mbazi ...	6s. " ...	15
324	"	...	Groundnuts ...	Njugu nyasa ...	18s. " ...	15
325	"	...	" ...	Njugu mawe ...	8s. " ...	14
326	"	...	Rice (hulled) ...	Mchele (shindano var.)	11s. " ...	15½
327	"	...	" (unhulled) ...	Mpunga ...	5s. " ...	12
253	"	...	Seed-cotton ...	Pamba ...	1st grade, 3d. lb	4
254	"	...	Cotton lint ...	" ...	1st grade, 10½d. lb.	4
255	"	Mikindani	Seed-cotton ...	" ...	" 3d. lb.	5½
256	"	...	Cotton lint ...	" ...	" 10d. lb	2
257	"	...	Seed-cotton ...	" ...	" 3d. lb.	5
258	"	...	Cotton lint ...	" ...	" 10½d. lb	3

259	"	...	...	Seed-cotton	...	...	"	...	grade 3d. lb.	6
260	"	...	...	"	...	...	"	...	3d. lb.	5
261	"	...	...	Cotton lint	...	...	"	...	10½ d. lb.	3
234	Morogoro	...	All tribes	Rice	...	...	Mchele...	...	1d. to 1d. lb.	10½
235	"	...	Kilu tribe	Cowpea	...	...	Kunde	...	½ d. lb.	11
238	"	...	...	Beans	...	...	Maharagwe	...	1d. per 2½ lb.	10
239	"	...	...	Rice	...	...	Mpunga	...	1d. lb.	10
240	"	...	...	Oil seeds (simsim)	...	...	Ufuta	...	3½ d. per 2½ lb.	10
241	"	...	Uluguru tribe	Chillies	...	...	Mpilipili	...	...	2
242	"	...	...	Millet	...	...	Mtama	...	3 lb. for 1d.	9½
246	"	...	...	Tobacco (black)	...	...	Tumbako	...	...	3½
245	"	...	...	Pepper	...	...	Pilipili manga...	...	2½ lb. for 4/6	...
236	"	...	...	Tobacco (roll)	...	...	...	...	...	5
125	"	...	Kilosa	Cotton lint	...	...	Pamba	...	1st grade, average sample	4
126	"	...	Turiani	"	...	...	"	...	"	6
127	"	...	"	Seed-cotton	...	...	"	...	"	10½
137	"	...	Morogoro	Peas	...	...	Chiroko	...	zd. per lb.	10½
123	Moshi	...	...	Cotton seed	...	...	Mbegu ya Pamba	...	...	10
124	"	...	...	Cotton lint	...	...	Pamba	...	...	8
Y/1	"	...	Wachagga	Maize	...	...	Mahinde	...	...	...
Y/2	"	...	...	Canadian Wonder Beans	...	...	Maharagwe	...	...	...
Y/3	"	...	...	White Madagascar Beans	...	...	"	...	...	...
Y/4	"	...	...	Dun Peas	...	...	"	...	...	...
Y/5	"	...	...	Marrowfat Peas...	...	...	"	...	...	...
Y/6	"	...	...	Speckled Beans	...	...	"	...	...	...
Y/7	"	...	...	"	...	...	"	...	Small	...
Y/8	"	...	...	White Medium Haricots	...	...	"	...	...	...
Y/9	"	...	...	Dhall	...	...	Choroko	...	...	...
Y/10	"	...	...	Tree Beans	...	...	Mbazi	...	...	...
Y/11	"	...	...	Kweme Nuts	...	...	...	...	...	...
Y/12	"	...	...	Rye	...	...	...	...	...	...
Y/13	"	...	...	Native Beans	...	...	Kunde	...	...	...
Y/14	"	...	...	Chillies	...	...	Pilipili	...	Small type	...
Y/15	"	...	...	Rice Paddy	...	...	Mpunga	...	...	...

## APPENDIX XII—continued.

No.	District.	Locality or Tribe.	Exhibit.		Remarks.	Weight. lbs.
			English Name.	Local Name.		
Y/16	Moshi ...	Wachagga ...	Millet Seed ...	Mtama...	Syrian type	...
Y/17	" ...	" ...	" ...	" ...	Indian type	...
Y/18	" ...	" ...	Negro Beans ...	Kunde...	...	...
...	Mwanza ...	" ...	Simsim (white) ...	Ufuta ...	...	...
...	" ...	" ...	Chiroko (green & black)	...	...	...
...	" ...	" ...	Beeswax ...	Mta ...	...	...
...	" ...	" ...	Cotton ...	Pamba...	...	...
...	" ...	" ...	Gum ...	Gundi	...	...
...	" ...	" ...	Groundnuts ...	Karanga	...	...
...	" ...	Ukerewe Is.	Paddy and rice ...	Mpunga and Mchele	...	...
...	" ...	Ukara Is. ...	" ...	"	...	...
...	" ...	Usukuma ...	" ...	"	...	...
297	" ...	Nyambiti ...	Cotton seed ...	Mbegu ya Pamba	...	8
299	" ...	" ...	" lint ...	Pamba ...	...	5
48	Pangani ...	" ...	Mkweme nuts ...	...	...	6½
102	Pangani Rice, s	specimens of 12	vars., as follows:—			
	(1) Nelli meriko	ra.	(5) Mruji.	(9) Singalanj	ubu.	
	(2) Ambarmaki.		(6) Kinamona.	(10) Kiguruw	a.	24½
	(3) Karafur bibi	ja kuguja.	(7) Koroway.	(11) Bwana m	yury.	
	(4) Kijunari.		(8) Pangani.	(12) Kibungul	a.	
247	Pangani ...	Arabs ...	Areca nut ...	Mpopoo ...	...	7
51	Rufiji... ...	Tawi ...	Simsim ...	Ufuta ...	Tribe Wamatumbi, 1½d. per lb.	12
52	" ...	Rondonbo, Mohoro	Cucumber seed ...	Mbegu ya mtango	Tribe Wamatumbi, ½d. per lb.	11½



53	"	"	Nyaringwe, Utete	Rice, unhusked ...	Mpunga halimaya	per lb. ...	11½
54	"	"	Mkunga, Utete	Cowpeas ...	Kunde	¾d. per lb. ...	11½
55	"	"	Kikale ...	Bonavist beans ...	Fiwi ...	1¼d. per lb. ...	12
56	"	"	Kiwili, Utete	Tobacco ...	Tumbako	3 lb. for 1s. ...	7
72	"	"	Kiwinja ...	Beeswax ...	Nta ...	36 lb. for 20s. ...	5½
73	"	"	Mohoro ...	Jaggery ...	Sukari guru	35 lb. for 4s. ...	27
74	"	"	Nyaringwe, Utete	Rice (unhusked)	Mpunga Jagermali	¾d. per lb. ...	11
75	"	"	Mohoro ...	Cashew nuts ...	Koroshu	2¼ lb. for 1s. ...	7½
76	"	"	Rondondo ...	Ginger ...	Tangawezi	1s. 3d. per lb. ...	9
77	"	"	Kiegere ...	Chillie peppers ...	Pilipili	2d. per lb. ...	2½
78	"	"	Matumbi, Tawi	Surface gum copal	Sandarusi ya guni	8d. per lb. ...	11
79	"	"	Rondondo, Mohoro	Green beans ...	Chiroko	1¼d. per lb. ...	11½
80	"	"	Mohoro ...	Rice ...	Mchele...	1¼d. per lb. ...	11½
81	"	"	Kitembo, Magongo	Cassava flour ...	Unga ya Muhogo	1¼d. per lb. ...	11½
82	"	"	Kitunda, Tawi	Bullrush millet ...	Uwimbe	¾d. per lb. ...	11½
83	"	"	Kingongo, Mohoro	"	"	¾d. " ...	11
84	"	"	Kihimbwa, Utete	Maize ...	Marombe (var. Monde)	1¼d. " ...	9½
85	"	"	Mbwera, Mohoro	Powdered starch	Uwanga	1¼d. " ... (Grows wild, and is used for food and laundry work)	7
86	"	"	Usimbe, Mohoro	Rice (unhusked)	Mpunga Sindano	¾d. per lb. ...	11½
87	"	"	Kumbi, Tawi	"	Mpunga- borakupata	¾d. " ...	11

## APPENDIX XII—continued.

No.	District.	Locality or Tribe.	Exhibit.		Remarks.	Weight. lbs.
			English Name.	Local Name.		
88	Rufiji...	Rondondo, Mohoro	Millet ... ..	Mtama ...	½d. " ... (Used for food and beer- making.)	10
331	" ...	Kilimani ...	Cotton lint ... ..	Pamba ...	...	5
304	Rungwe ...	Kikinga ...	Peas ... ..	Sibolo ...	1s. for 56 lb. ...	12
303/6	" ...	Kinyakyusa	Beans ... ..	Udima...	1s. " ...	20
307	" ...	"	Maize ... ..	Firombe ...	1s. " ...	17
305	" ...	"	Millet ... ..	Malesi ...	2s. " ... (For food and beer.)	18
328	" ...	Kikinya ...	Wheat ... ..	Ngano ...	2s. for 56 lb. ...	57
301	" ...	Kinyakyusa	Chillies ... ..	Pilipili ...	2½d. for 5 lb. ...	1
302	" ...	"	Castor-oil beans...	Nyemba ...	2s. for 56 lb. ...	5
310	" ...	"	Flax ... ..	Masapa ...	3s. " ...	3
308	" ...	"	Linseed ... ..	Mbegu ya masapa	5s. for 50 lb. ...	12
300	" ...	"	Rice ... ..	Mpunga ...	2s. for 56 lb. ...	6
1	Songea	"	Beans ... ..	Maharagwe ...	...	7
2	"	"	Hill rice ... ..	Kiambena ...	...	5½
333/3	"	"	Peas (P'geon) ... ..	Mbazi ...	...	13½
4	"	Lipumba ...	Wheat ... ..	Ngano ...	From native seed	5½
5	"	"	Cowpeas ... ..	Kunde...	...	8½
6	"	"	Sesame ... ..	Simsim ...	...	6½
7	"	"	Groundnuts ... ..	Njugu mawe ...	...	6
8	"	"	" ... ..	Njugu nyasa ...	...	6
332	"	"	" ... ..	Njugu nyasa ...	...	10
9	"	"	Eleusine (coracan) ... ..	Malezi ...	... called ... crop of the District.	6

10	"	...	...	Hill Rice...	...	Kikweta	...	5
11	"	...	...	"	...	Nyumba	...	5½
12	"	...	...	Beans	...	Mangutungu	Have strong astringent properties	7
13	"	...	...	Wheat	...	Ngano	From Nyasaland seed	6
14	"	...	...	Hill Rice...	...	Rufiji	...	4
15	"	...	...	"	...	Safari	...	4½
16	"	...	...	Beans	...	Maharagwe	...	7
17	"	...	...	"	...	Mandondo	...	7
18	"	...	...	Hill Rice	...	Kingomo	...	4
19	"	...	...	Swamp Rice	...	Sena	...	3½
20	"	...	...	Hill Rice...	...	Shindano	...	2½
21	"	...	...	"	...	"	...	7½
22	"	...	...	Swamp Rice	...	Kuanza	...	3½
23	"	...	...	Hill Rice...	...	Fara	...	2
89	"	...	...	Roll of Tobacco...	...	Tumbako	...	2
93	"	...	...	4 cakes of Beeswax	...	Nta	...	5½
94	"	...	...	Lump Tobacco	...	Nguli ya tumbako	...	5
24	Tabora	...	Wanyamwezi	5 cakes of Beeswax	...	Nta	1s. od. per lb...	13
25	"	...	"	Maize (red)	...	Mahinde	½d. a cob	3
26	"	...	"	Maize (Hickory King)	...	"	"	4½
97	"	...	"	Ironstone	...	Utindo	...	...
27	"	...	"	Cigarettes and Tobacco...	...	Sigreti and Tumbako	Cigarettes, 50 for 1s. 3d.	...
28	"	...	"	Beans	...	Maharagwe	Tobacco, 100 grms. for 1s. od.	12 lb.
29	"	...	"	Groundnuts (West African variety)	...	Karanga	3s. od. for 35 lb.	tin.
30	"	...	"	Groundnuts	...	"	4s. od. "	10½
31	"	...	"	Gum	...	Gundi	4s. od. " 6s. od. to 8s. od. for 35 lbs.	10 11

## APPENDIX XII—continued.

No.	District.	Locality or Tribe.	Exhibit.		Remarks.	Weight. lbs.
			English Name.	Local Name.		
32	Tabora ...	Wanyamwezi	Rice ... ..	Mpunga ...	6s. od. for 35 lb.	12
33	" ...	"	Beans (white) ... ..	Maharagwe ...	3s. od. "	10½
34	" ...	"	Sesame ... ..	Ufuta ...	6s. od. "	9½
35	" ...	"	Castor Oil Bean... ..	Mbarika ...	Used medicin- ally	4
36	" ...	"	" ... ..	" ...	"	9½
37	" ...	"	" ... ..	" ...	"	10½
38	" ...	"	Guinea Corn ... ..	Mtama... ..	2s. od. for 35 lb.	11
39	" ...	"	Castor Oil Bean... ..	Mbarika ...	Used medicin- nally	1
40	" ...	"	" ... ..	" ...	"	3½
41	" ...	"	" ... ..	" ...	"	1
42	" ...	"	Pig-iron ... ..	Maji ya Chuma	Used for spear- making	3
45	" ...	"	Iron-stone ... ..	Mawe ya Chuma	"	5
47	" ...	"	Starch ... ..	Wanga... ..	3d. for 1½ lb.	15½ lb. box.
104	" ...	"	Chillies ... ..	Pilipili... ..	7s. od. to 9s. od.	16
49/329	" ...	"	" ... ..	" ...	for 35 lb.	21½
50	" ...	"	Starch Powder ... ..	Wanga... ..	6d. for 1½ lb.	4½
92	" ...	"	Pig iron ... ..	Maji ya Chuma	"	6
...	" ...	Shinyanga ...	Chillies (small) ... ..	Pilipili... ..	"	6½
...	" ...	"	(large) ... ..	" ...	"	5
298	" ...	"	Cotton Lint ... ..	Pamba ...	"	108
296	" ...	"	Cotton Seed ... ..	Mbegu ya Pamba	"	8
T/1	Tanga ...	Mnyusi ...	Seed-cotton ... ..	Pamba	"	1prcl.

T/50-51	"	...	...	Beans ...	...	Kunde	...	2 bags.
T/2	"	...	Muheza	Seed-cotton	...	Pamba	...	1 bag.
T/27	"	...	"	Castor Oil Seed	...	Nyemba	...	"
T/54	"	...	"	Beans	...	Kunde	...	"
T/3	"	...	Gombero	Seed-cotton	...	Pamba	...	"
T/37	"	...	"	Coconuts...	...	Minasi	...	1 bdle.
T/39	"	...	"	Rice	...	Mpunga	Unhusked	1 box.
T/4	"	...	Tongoni	Seed-cotton	...	Pamba	...	1 bag.
T/5	"	...	Moa	"	...	Pamba	...	"
T/38	"	...	"	Rice	...	Mpunga	Unhusked	1 box.
T/52	"	...	"	Beans	...	Kunde...	...	1 bag.
T/58	"	...	"	"	...	Maweze	...	"
T/59	"	...	"	"	...	Kimanga	...	"
T/6	"	...	Buiti	Seed-cotton	...	Pamba	...	"
T/43	"	...	"	Rice	...	Mpunga	Unhusked	1 box.
T/46	"	...	"	"	...	Mchele...	Cleaned	"
T/56	"	...	"	Maize	...	Mahindi	...	1 bag.
T/7	"	...	Mahengo	Seed-cotton	...	Pamba	...	"
T/28	"	...	Mrimba	Mkweme Nuts	...	...	...	"
T/44	"	...	"	Rice	...	Mpunga	Unhusked	1 box.
T/48	"	...	"	Beans	...	Kunde...	...	1 bag.
T/29	"	...	Tangata	Tobacco Leaf	...	Tumbako	...	1 pkt.
T/49	"	...	"	Beans	...	Kunde	...	1 bag.
T/40	"	...	Pongwe	Rice	...	Mpunga	Unhusked	1 box.
T/9	"	...	"	Clean Cotton	...	Pamba	...	1 bag.
T/41	"	...	Tanga	Rice	...	Mpunga	Unhusked	1 box.
T/45	"	...	"	"	...	Mchele...	Cleaned	"
T/57	"	...	"	Simsim	...	Ufuta	...	1 bag.
T/42	"	...	Amani	Rice	...	Mpunga	Unhusked	1 box.
T/47-	"	...	"	Beans	...	Kunde	...	3 bags.
53-55	"	...	"	"	...	"	...	"
T/30	"	...	Kizara Mission	Tobacco Cake	...	Tumbako	...	1 pkt.
129	Ufipa...	...	...	Soapberries	...	Arita	Used for washing purposes	7

## APPENDIX XII—continued.

No.	District.	Locality or Tribe.	Exhibit.		Remarks.	Weight. lbs.
			English Name.	Local Name.		
130	Ufipa	...	Groundnuts (unshelled)	Njugu mawe ...	...	5½
131	"	...	Beans ... ..	Kunde... ..	...	4½
132	"	...	Curry powder and Root	Manjano ... ..	...	1
133	"	...	Eleusine (coracan) ...	Malezi ... ..	...	6
134	"	...	Sesame ... ..	Ufuta ... ..	...	6
135	"	...	Beans ... ..	Maharagwe ... ..	...	11
136	"	...	Rice (unhusked) ... ..	Mpunga ... ..	...	11
100	Usambara	Gonja Dist....	Beans (grey) ... ..	Kunde ... ..	1d per lb. ...	12½
243	"	Mlola "	" ... ..	Fiwi ... ..	1d. " ...	5
244	"	Gonja "	" (brown) ... ..	Kunde ... ..	1d. " ...	12½
262	"	Mlola "	" (mixed) ... ..	Fiwi ... ..	1d. " ...	4
263	"	" "	" ... ..	Mbazi ... ..	¾d. " ...	10
264	"	" "	" ... ..	" ... ..	¾d. " ...	9
265	"	Korogwe ...	Groundnuts ... ..	Njugu mawe ...	1d. " ...	4
266	"	Mlola ...	Beans ... ..	Maharagwe ...	1½d. " ...	12
267	"	Kikurio ...	Salt ... ..	Chumvi ... ..	¾d. " ...	9
107	Mbulu School, Arusha	...	Barley ... ..	...	...	10
113	Utengule School, Songea	...	Soya Beans ... ..	...	...	5
114	Songea School	...	Wheat (Nyasa seed) ...	Ngano	Grown by pupils in the School Gardens	8
117	Mbulu School, Arusha	...	Madagascar Butter Beans	...		9½
118	Utengule School, Songea	...	Green Peas ... ..	Chiriko		6

## APPENDIX XII—continued.

## B.—EXHIBITS FROM THE AGRICULTURAL INSTITUTE, ANONI.

No.	Exhibit.	Remarks.	Weight.
1	<i>Coffea robusta</i> ... ..	Specimen in spirit ... ..	
2	" " ... ..	In parchment ... ..	lbs.
3	" " ... ..	Without parchment ... ..	
4	" <i>Quillou</i> ... ..	Specimen in spirit ... ..	
5	" " ... ..	In parchment ... ..	lbs.
6	" " ... ..	Without parchment ... ..	
7	" <i>Bukobensis</i> ... ..	Specimen in spirit ... ..	
8	" " ... ..	In parchment ... ..	lbs.
9	" " ... ..	Without parchment ... ..	
10	" <i>excelsa</i> ... ..	Specimen in spirit ... ..	
11	" <i>liberica</i> ... ..	Specimen in spirit ... ..	
12	<i>Erythoxylon Coca</i> (Cocaine) ... ..	" " ... ..	
13	<i>E. Coca</i> , var. <i>novagranatense</i> ... ..	" " ... ..	
14	<i>E. Coca</i> ... ..	Showing the dried crushed leaves ... ..	
15	<i>Telfairia pedata</i> , Mkweme ... ..	Picture showing fruit ... ..	
16	" " " ... ..	Showing seeds from which the oil is extracted ... ..	
17	" " " ... ..	Showing oil extracted from the seeds ... ..	
18	<i>Allanblackia Stuhlmannii</i> ... ..	Picture showing fruit ... ..	
19	" " " ... ..	Showing fat obtained from seeds ... ..	
20	<i>Bixa Orellana</i> " ... ..	Showing the seeds from which the dye " Annatto " is obtained. ... ..	
21	" " " ... ..	Showing the prepared powder ready for use... ..	
22	<i>Elaeis guineensis</i> , Oil Palm ... ..	Showing the fruit from which the oil is extracted. ... ..	
23	" " " ... ..	Showing oil obtained from the fruits... ..	
24	<i>Phoenix reclinata</i> , Mkindu ... ..	Showing the dried fronds as obtained from the palm. ... ..	
25	" " " ... ..	Showing the dyed platings made from the leaves. ... ..	

## APPENDIX XII—continued.

1061

No.	Exhibit.	Remarks.	Weight.
26	<i>Carludovica incisa</i> ... ..	Showing dried specimen of leaves from which Panama hats are made.	...
27	<i>Agave rigida</i> ... ..	Showing sisal obtained	...
28	" " var. <i>elongata</i> ... ..	" " " " " " " " " " " "	...
29	" " <i>sisalana</i> ... ..	" " " " " " " " " " " "	...
30	<i>Cinnamomum Zeylanicum</i> , Cinnamon	Showing the bark as taken from the tree	...
31	" " " " " " " " " " " "	Showing prepared bark	...
32	<i>Cinnamomum Camphora</i> , Camphor	Showing specimens of dried leaves	...
33	" " " " " " " " " " " "	Showing Camphor crystals	...
34	" " " " " " " " " " " "	Showing crude Camphor Oil	...
35	" " " " " " " " " " " "	Showing refined Camphor Oil	...
36	<i>Artemisia afra</i> ... ..	Showing dried specimen of flower heads; a probable source of Santonin.	...
37	<i>Erythrophleum guineense</i> , Sassy Bark	Showing the dried bark	...
38	<i>Cinchona robusta</i> ... ..	Showing dried specimens of leaves and flowers	...
39	" " " " " " " " " " " "	Showing the dried bark from which quinine is extracted.	...
40	" <i>Ledgeriana</i> ... ..	Showing dried specimens of leaves and flowers	...
41	" " " " " " " " " " " "	Showing the dried bark	...
42	" <i>succirubra</i> ... ..	Showing dried specimens of leaves and flowers	...
43	" " " " " " " " " " " "	Showing the dried bark	...
44	<i>Cinchona Ledgeriana</i> and <i>C. succirubra</i> ( <i>Cinchona</i> hybrid).	Showing dried specimen of leaves and flowers	...
45	<i>C. Ledgeriana</i> and <i>C. succirubra</i> ( <i>Cinchona</i> hybrid).	Showing the dried bark	...
46	<i>Camellia theifera</i> , Tea	Prepared tea	5 kilos.
47	<i>Eugenia caryophyllata</i>	Cloves	5 lb.
48	<i>Areca Catechu</i> , Areca Nut	Showing dried nut as collected from the tree	...
49	" " " " " " " " " " " "	Showing nut with husks removed	...



APPENDIX XII—*continued.*

## C.—EXHIBITS FROM THE PUBLIC WORKS DEPARTMENT

No.	Exhibit.	Remarks.	Weight.
...	Msaar Timber (Kilimanjaro mahogany) ...	For making stands and panelling in the Court	...
...	Mkangazi Timber ... ..	...	...
...	2 Tables ... ..	...	...
...	2 Stands ... ..	...	...

## D.—EXHIBITS FROM THE RAILWAY DEPARTMENT

Mninga Timber ... ..	For making stands and panelling in the Court	...
----------------------	--	-----

## E.—EXHIBITS FROM THE FORESTRY DEPARTMENT

No.	Native name.	Size of plank.
01	Mwandama ... ..	5½ ft. × 12 ins. × 1½ ins.
05	Kilabe ... ..	5½ ft. × 12 ins. × 1½ ins.
09	Kimba ... ..	5½ ft. × 10 ins. × 1½ ins.
010	Ngwe ... ..	5½ ft. × 14 ins. × 1½ ins.
011	Muhungati ... ..	5½ ft. × 9 ins. × 1½ ins.
012	Mwewe ... ..	5½ ft. × 10 ins. × 1½ ins.
013	Mhombo ... ..	5½ ft. × 11 ins. × 1½ ins.
014	Msingtangusuwe ... ..	5½ ft. × 11 ins. × 1½ ins.
019	Mse ... ..	5½ ft. × 12 ins. × 1½ ins.
028	Mshongoranyika ... ..	5½ ft. × 9 ins. × 1 in.
033	Mbuzungu ... ..	5½ ft. × 10 ins. × 1½ ins.
008	Chafandwa ... ..	5½ ft. × 8 ins. × 1½ ins.

## D.—EXHIBITS OF NATIVE ARTS AND CRAFTS

No.	District.	Tribe.	Exhibit.		Remarks.
			English Name.	Local Name.	
1	Arusha ... ..	Masai ... ..	Copper and Horn (Buffalo) Bracelet	Erav ... ..	Worn on left upper arm by warriors only. (Local price, 4s. od.)
2	" ... ..	" ... ..	Thigh Belt, with Bell ...	Olduala ... ..	Worn by warriors. (Local price, 8s. od.)
3	" ... ..	" ... ..	Bead Necklet ... ..	Osiririm ... ..	Worn round waist by warriors and young girls only. (Local price, 2s. od.)
4	" ... ..	" ... ..	Leather and Bead Head- band.	Engisarbo	Worn round forehead by young girls and young married women. (Local price, 4s. od.)
6	" ... ..	" ... ..	Waist Belt ... ..	Enniyana	Worn by young girls. (Local price, 6s. od.)
7	" ... ..	" ... ..	Bead Necklaces ... ..	Mboro ... ..	Worn by married women. (Local price, 12s. od.)
8	" ... ..	" ... ..	Brass Wire Armlet ... ..	Osuyai ... ..	Worn on left upper arm. (Local price, 12s. od.)
9	" ... ..	" ... ..	Iron Wire Necklets ... ..	Esenga ... ..	Worn by young girls. (Local price, 6s. od.)
10	" ... ..	" ... ..	Leather and Bead Armlet	Olgilisho ... ..	Worn on right upper arm by warriors and young girls. (Local price, 4s. od.)
11	" ... ..	" ... ..	Ear Chains ... ..	Ilyisia ... ..	Worn by young girls and young married women.

12	"	...	...	Masai	...	Head Ornament with brass appendages.	Surutia	Worn by married women.
13	"	...	...	"	...	Short Sword ...	Olalem ...	Used by warriors.
14	"	...	...	"	...	Colobus Headdress ...	Olvidivid...	Worn by warriors. (Local price, 20s. od.)
15	"	...	...	"	...	Buffalo-hide Shield ...	Elono ...	Used by warriors. (Local price, 30s. od.)
16	"	...	...	"	...	Spear ...	Embere ...	Used by warriors. (Local price, 24s. od.)
17	"	...	...	"	...	Ostrich Feather Tuft for Spear.	Esusul ...	(Local price, 8s. od.)
18	"	...	...	"	...	Feather Necklet (Vulture)	Olmairutie or Olmotonyi	Worn by warriors. (Local price, 20s. od.)
19	"	...	...	"	...	Skin Underskirt...	Olokosena	Worn by married women. (Local price, 3s. od.)
20	"	...	...	"	...	Necklet ...	Esegenge...	Worn by married women. (Local price, 6s. od.)
...		...	...	...	...	Armlet ...	Olvirangas	Worn on upper arm by married women. (Local price, 6s. od.)
21	"	...	...	"	...	Worn round legs by women.	Mindiri ...	Two. (Local price, 2s. od.)
22	"	...	...	"	...	Armlet ...	Esengengei or Endakule	Worn round forearm by women. (Local price, 2s. od.)
23	"	...	...	"	...	Ear-rings with Chains ...	Ngiraagani	Worn by women. (Local price, 1s. od.)
24	"	...	...	"	...	Lion Headdress ...	Olugatang	Worn by warriors. (Local price, 20s. od.)
2	Arusha (Mbulu)...			Wambulu	...	Dress of young girls ...	...	(Local price, 12s. od.)
...	"	...	...	"	...	Cloak of married women	...	(Local price, 15s. od.)
3	"	"	"	"	...	Dress of women during confinement.	...	(Local price, 8s. od.)
4	"	"	"	"	...	Dress of young married women.	...	(Local price, 16s. od.)

## APPENDIX XII—continued.

No.	District.	Tribe.	Exhibit.		Remarks.
			English Name.	Local Name.	
5	Arusha (Mbulu) ...	Wambulu ...	Dress of young girls ...	...	(Local price, 12s. od.)
6	" " ...	" " ...	Marriage Bracelet ...	...	Given by bridegroom. (Local price, 21s. od.)
7	" " ...	" " ...	Necklace ...	...	Given to bridegroom by a sister. (Local price, 1s. od.)
8	" " ...	" " ...	Ornamental Bracelet ...	...	Worn by the old men and women. (Local price, 5s. od.)
9	" " ...	" " ...	Local Fire-sticks ...	...	In general use. (Local price, 1s. od.)
10	" " ...	" " ...	Local hoe ...	Jembe ...	In general use. (Local price, 2s. od.)
11	" " ...	" " ...	Spear ...	...	(Local price, 3s. od.)
12	" " ...	" " ...	Shields ...	...	(Local price, 4s. od.)
13	" " ...	" " ...	Grass Baskets ...	...	(Local price, 1s. 3d.)
14	" " ...	" " ...	Cattle Bells ...	...	(Local price, 4s. od.)
15	" " ...	" " ...	Pliers ...	...	(Local price, 20s. od.)
D/D/1	Dar es Salaam ...	Wazaramu ...	Carved Walking sticks...	Fimbo ...	Used for dressing the hair in the narrow plaits peculiar to Swahili women and tribes of the Coast belt.
D/B/1	" " ...	" " ...	Comb ...	Shanuo ...	
D/D/2	" " ...	" " ...	Ebony Walking Sticks...	Fimbo ...	Worn by women as an ornament at native dances.
T/C/1	" " ...	Swahili ...	Grass Mats ...	Mikeka ...	
D/A/4	Mafia Island ... Dar es Salaam ...	" " ...	Bead Headdress ...	Ushanga	

D/B/2	"	"	Combs ... ..	Shanuo ...	...
D/A/3	"	"	Musical instrument ...	Kidunguhi	...
D/A/2	"	"	" "	Kayamba	The reeds are filled with grains of millet, and shaken to keep time with the steps in native dances.
D/A/1	"	Wazaramu ...	Small Ceremonial Axes	Shoka ...	Carried by the women at Wazaramu dances.
V/B/10	Dodoma ...	Wagogo ...	Lopping Axe ... ..	...	...
V/A/4	"	"	Armlet ... ..	...	Worn by men.
V/A/3	"	"	Belt ... ..	...	Worn by men at dances.
V/B/6	"	Wakaguru ...	Wooden Spoons ...	Vijiko ...	...
V/B/5	"	"	Marketing Baskets ...	Vikapo ...	...
V/B/1	"	"	Envelope Basket ...	...	...
V/A/1	"	"	Leg Ornaments ...	...	Worn by men.
V/B/9	"	Wagogo ...	Native Broom ... ..	Ufagio ...	...
V/C/2	"	Wakaguru ...	Model Native Bedstead	Kitanda ...	...
V/B/7	"	"	Flour Baskets ... ..	...	...
V/B/4	"	"	Grain Baskets ... ..	...	...
V/B/2	"	"	Milk or Beer Cups ...	...	...
V/B/3	"	"	Basin for Milk ... ..	...	...
V/C/3	"	"	Model Fish Trap ... ..	...	...
V/B/11	"	Wanguu	Knife with Horn Handle	Kisu ...	...
V/A/7	"	Wayao ...	Copper Waistbelts ...	...	Made from German telegraph wires.
V/C/1	"	Wakaguru ...	Models of Native Huts (framework only).	...	...
V/A/2	"	Wagogo ...	Club Stick ... ..	...	Used in fighting.
V/A/6	"	"	Neck Ornament ... ..	...	...
V/A/5	"	"	Ear Ornament ... ..	...	...
V/A/8	"	"	Copy of Masai Shield ...	Ngao ...	...
V/B/13	"	Wanyamwezi	Bark Boxes ... ..	...	Used for storing grain.
I/A/4	Iringa ...	Wahehe ...	War Spears ... ..	Mkuki ...	...

## APPENDIX XII—continued.

No.	District.	Tribe.	Exhibit.		Remarks.
			English Name.	Local Name.	
I/A/5	Iringa ... ..	Wahehe ...	Copper Waist Belt ...	Utunda ...	Worn by women as an ornament.
I/B/3	"	Wasanga ...	Beer Cup ... ..	Kikota ...	...
I/B/1	"	Wahehe ...	Grass Kilt ... ..	...	...
I/A/1	"	"	Native Drum ... ..	Ngoma ...	Covered with snake skin.
I/B/2	"	Wangonongona.	Wooden Milking Cup ...	Kinu ...	...
I/D/1	"	Wahehe ...	Native Stool ... ..	Kiti ...	Made from one piece of wood.
I/D/2	"	"	Ivory and Ebony Candlestick	Mpingo ...	Made by a native workman
I/D/3	"	"	Ebony and Ivory Salad Spoons and Forks.	Vijiko na Nyuma (Uma).	Made by a native workman
I/A/2	"	"	Musical Instrument ...	Igombo ...	...
I/A/3	"	"	Shield ... ..	Ngao ...	...
P/A/19	Kigoma, Kasulu ...	Waha ...	Spears ... ..	Mikuki ; Schumu	...
P/A/8	Kigoma, Ujiji ...	Watongwe ...	Hunting Spears ... ..	Mikuki ...	...
P/A/12	"	"	Spear ... ..	Mkuki ...	...
P/A/17	Kigoma, Kasulu	Waha ...	Copper Wristlet ... ..	Mulinga ; Wizuru	...
P/B/20	" " ...	" ...	Axe ... ..	Shoka ; Ikibezi ...	Used for domestic purposes.
P/C/5	Kigoma, Ujiji ...	Watongwe ...	Axes ... ..	Shoka ...	...
P/A/1	"	"	Knives ... ..	Kisu ...	Used in self-defence.
P/A/12	Kigoma, Kasulu ...	Waha ...	Sword ... ..	Panga ; Umurehe	...

P/A/13	" " ...	" ...	Sheath Knife ...	Kisu ; Mbugita	Slapped to back of upper left arm so that it can be easily drawn in event of sudden attack from behind.
P/A/6	Kigoma, Ujiji ...	Watongwe ...	Brass Bangle ...	Mulinga ...	...
P/A/18	Kigoma, Kasulu...	Waha ...	Brass Wristlet ...	Mulinga Mfuguiu	...
P/A/11	Kigoma, Ujiji ...	Watongwe ...	War and Hunting Spears	Mikuki ...	...
P/B/27	Kigoma, Kasulu...	Waha ...	Purse ...	Mfuko ; Ibuku	...
P/B/26	" " ...	" ...	Copper Bangles ...	Vikuku ; Nyelele	Made by the local women from copper wire, which they wind round goats' hair.
P/B/25	" " ...	" ...	Brass Armlets ...	Vikuku ; Midogi	...
P/A/11	Kigoma, Kasulu...	Waha ...	Zither ...	Inanga ...	...
P/B/24	" " ...	" ...	Anklelets ...	Nyelele or Sambo	...
P/B/2	Kigoma, Ujiji ...	Watongwe ...	Wooden Ladles ...	Kijiko ; Kilavio	...
P/B/22	Kigoma, Kasulu...	Waha ...	Bag ...	Mfuko ; Ndaha	Made from the Mishigura shrub.
P/B/9	Kigoma, Ujiji ...	Watongwe ...	Food Basket ...	Fundikwa	...
P/B/1	" " ...	" ...	Food Baskets ...	Mkoko ...	...
P/C/4	" " ...	" ...	Grass Mats ...	Mikeka ...	...
P/C/6	Kigoma, Kasulu...	Waha ...	Grass Trays ...	Ntimiri ...	...
P/B/6	Kigoma, Ujiji ...	Watongwe ...	Butter Pot ...	Mlindo ...	...
P/B/15	" " ...	Wakaranga...	Basket for carrying food	Kibango ...	...
P/B/13	" " ...	Watongwe ...	Food Safes ...	Kakubulu	...
P/B/8	" " ...	" ...	Food Container or Plate	Mabango...	...
P/B/4	" " ...	" ...	Types of Winnowing Basket.	Lukoko ...	...
P/B/28	Kigoma, Kasulu...	Waha ...	Bark Cloth Dress worn by men.	Mpuzu ...	...

## APPENDIX XII—continued.

No.	District.	Tribe.	Exhibit.		Remarks.	
			English Name.	Local Name.		
P/B/3	Kigoma, Ujiji ...	Watongwe ...	Milk Pot ...	...	Chansi ...	Made from a block of wood
P/B/21	Kigoma, Kasulu...	Waha ...	Native Hoe ...	...	Jembe; Nsuka	Smelted by native work- men from local ore.
P/B/11	"	"	Bark Cloth Suits ...	...	...	...
P/B/14	Kigoma, Ujiji ...	Watongwe ...	Food Safes ...	...	Umtiri ...	...
(3)	"	"	"	"	"	"
P/A/15	Kigoma, Kasulu	Waha ...	Whistles ...	...	Masoro ...	Made from hippo ivory. Worn round the neck and used when out hunting for calling dogs and other hunters.
P/A/16	"	"	Waist Belt ...	...	Iumbi ...	Worn by women; the bead part at the back.
P/D/2	Kigoma, Ujiji ...	Watongwe ...	Axe ...	...	Shoka ...	Used for wood carving.
P/B/12	"	"	Native Stools ...	...	Viti; Ntebe	Made out of one piece of wood.
P/A/4	"	"	Head Ornament ...	...	Kishingo	...
P/B/17	Kigoma, Kasulu	Waha ...	Cowskin Dress ...	...	Urusatu ...	...
P/A/7	Kigoma, Ujiji ...	Wakaranga...	Small Drum ...	...	Ngoma ...	"
P/A/10	"	Waha ...	Native Drum ...	...	"	"
P/B/5	"	Watongwe ...	Milk Pot ...	...	Kibuyu ...	Used to make butter by rolling.
P/A/9	"	Waha ...	Bow and Arrows ...	...	Upinde na mishale	...
P/A/14	Kigoma, Kasulu	"	"	"	Humuweto; Umwambi	...
P/C/7	"	"	Native Bellows ...	...	Umuvuba	...



P/C/1	Kigoma, Ujiji ...	Watongwe ...	Fire Holder ...	Kitatu ...	Used for night fishing on Lake Tanganyika.
B/C/6	Kilwa ...	Wangindo ...	Native Dugout Canoe ...	Ngarawa	Used for fishing.
B/A/1	"	Wamatumbi	Native Drums ...	Ngoma ...	Used at dances.
B/C/5	"	"	Models of Dhows ...	"	"
B/C/7	"	Swahili ...	Fish Traps ...	Uzio ...	"
B/C/4	"	"	Model Fishing Nets ...	Sone ...	"
B/C/2	"	"	Fish Trap ...	Dema ...	The traps are moored at a depth from 2 to 6 fathoms, and baited with a special kind of seaweed.
B/C/3	"	"	Model Fishing Net ...	Sima ...	"
B/C/1	"	"	Trawling Net ...	"	"
B/B/1	"	Wangindo ...	Food Baskets ...	Jemanda	"
B/B/2	"	"	Beer Cup ...	Kidoto ; Kirumba	"
B/A/2	"	Wamatumbi	Castanets ...	Viwangara	Used at native dances.
B/A/3	"	Wangindo, Wamatumbi	Bows and Arrows ...	Pinde na mishale	The tips of the arrows are poisoned by dipping them into a liquid, made by boiling down the pounded inner bark of a tree. Death from this poison occurs within 2 and 3 minutes.
K/A/12	Kondoa Irangi ...	Warangi ...	Spear ...	Mkuki ; Ichimo	"
K/A/18	"	Waburungi	"	Mkuki ; Klama	"
K/A/19	"	Wasandawi	"	Mkuki ; Bokwe	"
K/A/3	"	"	Guitar ...	Toto ...	"
K/B/8	"	Warangi	Swizzle Stick ...	Lufidi ...	Used for stirring gruel.
K/B/13	"	Wasandawi...	Snuff Box ...	Kibuiga ...	"

## APPENDIX XII—continued.

No.	District.	Tribe.	Exhibit.		Remarks.
			English Name.	Local Name.	
K/A/13	Kondoa-Irangi ...	Wasandawi... Warangi, Waburungi	Bows ... ..	Uta Kanii Ga'aya	...
K/B/15	" ...	Warangi ...	Horn Handles; Sheath- knife with Snuff Box	Fimbo; Suse	...
K/B/11	" ...	Warangi	Wooden Spoon ... ..	Mtiko ...	...
K/A/20	" ...	Warangi ...	Poisoned Arrows ...	Mishale; Misa	...
K/A/4	" ...	Waburungi	"	Mishale; Tabum	...
K/A/5	" ...	Wasandawi...	War Arrows ... ..	Mishale; Khunde; Msabn	...
K/B/10	" ...	Warangi ...	Arrows ... ..	Mishale; Magaa	...
K/B/34	" ...	Wasandawi Waburungi.	Arrows for Hunting ...	Mishale; Kasama na Pando	...
K/B/9	" ...	Wasandawi...	Arrow Knife ... ..	Mishale; Dzohei	Used for piercing the blood vessels of oxen for food in time of famine.
K/B/35	" ...	" ...	Arrow ... ..	Mishale; Isole	Specially designed to stun birds.
K/A/6	" ...	Warangi ...	Swearing Iron ... ..	Papahasimo	This iron is used in trial by ordeal and when administering an oath. The iron is heated in the fire, and then the blade

K/B/24	"	...	"	...	Woman's Dress, complete	Mkinda na ya nyuma.	...	aid on the tongue of the person to be tried. The blade is reserved for the use of men, and the other for women.
K/B/27	"	...	"	...	Firesticks	Lofezo	...	
K/A/10	"	...	Wasandawi...	...	War Headdress	Sangu	...	
K/B/1	"	...	Warangi	...	Types of Axe	Chadya	...	
			Wasandawi	...		Kongora		
			Waburungi	...		Kirara		
K/A/1	"	...	Warangi	...	Axe	Chadya	...	Used only in native dances.
K/B/6	"	...	"	...	Hoe	Isiri	...	
K/B/4	"	...	Wabarungi	...	Types of Billhooks	Senko	...	
			Wasandawi	...		Sanka		
			Warangi	...		Sengo		
K/B/31	"	...	"	...	Wooden Milking Pail	Kiramo	...	
K/A/2	"	...	"	...	Horn Bugle	Paranda	...	Used at native dances.
K/A/16	"	...	Waburungi...	...	Wooden Drum	Hosmo	...	Played by women.
K/B/36	"	...	Wasandawi...	...	Little Girls' Dress of Cord	Sambala	...	
K/B/12	"	...	Waburungi...	...	String Anklets and Hide Wristlets.	Kubu ; Rawi	...	
K/B/30	"	...	Warangi	...	Flour Tray	Kihadi	...	
K/B/25	"	...	"	...	Rich Woman's Dress	Kilamba	...	
K/A/14	"	...	"	...	Wedding Drum	Tangesa	...	
K/B/32	"	...	"	...	Beer Vessel	Lukulu	...	
K/B/28	"	...	"	...	Water Vessel	Kisuele	...	
K/A/17	"	...	Wasandawi...	...	Types of Flour Vessels	Dafaa	...	Used at wedding.
K/B/29	"	...	Warangi	...	Milk Basin	Kisenge	...	
K/B/30	"	...	"	...	Flour Tray	Kihadi	...	
K/A/7	"	...	Wasandawi...	...	Shield	Gonaa	...	
K/B/21	"	...	Warangi	...	Leggings	Masarata...	...	Worn by the old men of the wealthier classes.

## APPENDIX XII—continued.

No.	District.	Tribe.	Exhibit.			Remarks.	
			English Name.	Local Name.			
K/A/11	Kondoa-Irangi ...	Wasandawi .. Warangi Waburungi	Singlestick	...	...	Lonka Ngao Kome ; Gula ; Hada Karaso ...	...
K/B/26	" ...	Wasandawi...	Farm Rake	...	...	Ninga ...	..
K/A/15	" ...	Warangi ...	Drum	...	...	Mifuko ya	...
A/C/1	Lindi ...	Wamaraba ...	Tobacco Pouches of woven grass.			miaa ; Mikoba	...
A/B/1	" ...	" ...	Types of Wooden Spoons			Mkoba ...	...
A/A/2	" ...	Wayao, Wamakonde, Wamarabe	Drum	...	...	Ngoma ; Mvumi	Used at dances
A/A/1	" ...	Wamauko ...	Tribal Masks	...	...	Sanamu ; Ndimu	...
G/D/5	Morogoro	Waluguru ...	Carved Walking Sticks...			Fimbo ...	...
G/D/6	"	"	Carved Stick Handles	...	...	...	...
G/B/8	"	Wakhutu ...	Native Hoes with Wooden Handles.			Jembe ; Bode	This type of hoe was used before iron smelting was known.
G/B/14	"	Waluguru ...	Sling	...	...	Kumbewe Bewe	Used by children to scare birds.
G/C/3	"	"	Beer Cup	...	...	Kikota ; Kikona	...
G/C/5	"	Wahungo	Wicker Plate for Food			Kitunga ; Kiruyi	...
G/C/4	"	Wakhutu ...	Beer Pots...	...	...	Kitunga ; Chikona	...

G/D/4	"		Wahungu	Small Basket ... ..	Kikapo	...
G/C/7	"		Waluguru ...	Common type of Basket	Nange ...	Used for carrying farm produce.
G/B/1	"		"	Various types of kilt	Kisambo ;	...
G/C/1	"		Wahungu		Bwaya	...
G/C/2	"		Wakhutu ...	General Market Basket	Ungo ;	...
G/B/4	"		"	Type of Food Plate ...	Kikhata	...
G/C/6	"		Wahungu	Goat Skin Cloth ...	Kitunga	...
G/B/12	"		Wanguru ...	Nest of Bags ... ..	Ngozi ;	The dye is obtained from the Mkattako tree.
G/B/11	"		Waluguru ...	Eating Plate ... ..	Bwende	...
G/D/1	"		"	Cooking Pot ... ..	Vikapo	...
G/B/7	"		Wahungu ...	Tobacco and Snuff Boxes	Kungu or	...
G/A/2	"		Wakhutu ...	Types of Spoons ...	Mkungu	...
G/B/10	"		"	Club or Knobkerrie ...	Chungu ;	...
G/A/3	"		Wahungu ...	Native Pipe ... ..	Kalongo	...
G/B/9	"		Waluguru ...	Axe ... ..	Tabakero	...
G/A/1	"		Wakhutu ...	" ... ..	Vijiko ;	Used in cooking.
S/B/1	Moshi	...	"	Old Knife ... ..	Miko	...
M/56	"	...	Wachagga ...	Food Stand ... ..	Rungu ...	Carried for personal protection.
M/57	"	...	"	Horn ... ..	Kiko ;	...
M/58	"	...	"	Sugar Mill ... ..	Ndoyo	...
	"	...	"	Necklace ... ..	Shoka ...	Formerly used in tribal warfare ; now carried as a mark of distinction by the old men as heads of families.
	"	...	Wakhutu ...	" ... ..	Shoka ;	For domestic purposes.
	"	...	"	Old Knife ... ..	Choka	...
	"	...	Wachagga ...	Food Stand ... ..	Panga ...	...
	"	...	"	Horn ... ..	Visahani ...	...
	"	...	"	Sugar Mill ... ..	Kilumo ...	Cupping-horn.
	"	...	"	Necklace ... ..	Kinu cha	...
	"	...	"	" ... ..	miwa	...
	"	...	"	" ... ..	Iwina ...	...

## APPENDIX XII—continued.

No.	District.	Tribe.	Exhibit.		Remarks.
			English Name.	Local Name.	
M/59-64	Moshi ... ..	Wachagga ... ..	Wooden Plates ... ..	Shitila ... ..	...
M/65-70	" ... ..	" ... ..	Stools ... ..	Lorika ... ..	...
M/71	" ... ..	" ... ..	Club ... ..	Rungu ... ..	...
M/72	" ... ..	" ... ..	Loin Ornament ... ..	Ndore ... ..	...
M/76-99	" ... ..	" ... ..	Gourds ... ..	Shirau ... ..	Beer tumblers
M/73	" ... ..	" ... ..	Shield ... ..	Ngao ... ..	...
M/74	" ... ..	" ... ..	Bee-hive ... ..	Modu ... ..	...
M/75	" ... ..	" ... ..	Hive-borer ... ..	Msasafu ... ..	...
M/100	" ... ..	" ... ..	Ornament ... ..	Kichenje... ..	Made of hair.
M/1-12	" ... ..	" ... ..	Sticks ... ..	Njuboi ... ..	Ebony wood.
M/13	" ... ..	" ... ..	Facial Ornament ... ..	Namuka ... ..	For warriors.
M/14	" ... ..	" ... ..	Ornament ... ..	Ngirono ... ..	For the back of warriors.
M/15	" ... ..	" ... ..	Hoof Rings ... ..	Rachi ... ..	...
M/16	" ... ..	" ... ..	Ornaments ... ..	Munge ... ..	For the feet of warriors.
M/18	" ... ..	" ... ..	Bow and Arrows ... ..	Ura na Mfi ... ..	For warriors.
M/45	" ... ..	" ... ..	Bow and Arrows ... ..	" ... ..	For elephant hunters.
M/20	" ... ..	" ... ..	Long Sticks ... ..	Oro ... ..	A game.
M/21	" ... ..	" ... ..	Wooden Rat Trap ... ..	Kisara cha mbewa ... ..	...
M/22	" ... ..	" ... ..	Spear ... ..	Fum ... ..	...
M/23	" ... ..	" ... ..	Feather Ornament ... ..	Mariti ... ..	For warrior's shoulder.
M/24-27	" ... ..	" ... ..	Wooden Basins connected with Stands.	Mbuta ... ..	...
M/28	" ... ..	" ... ..	Sword ... ..	Oshu ... ..	Warriors'
M/29	" ... ..	" ... ..	Meat Knife ... ..	Kishu kya ngau. ... ..	...
M/30	" ... ..	" ... ..	Honey Knife ... ..	Ukombo ... ..	...
M/31-36	" ... ..	" ... ..	Wooden Blood Pots ... ..	Shimoleko ... ..	...

M/37	"	...	...	"	...	Honey Vessel ...	Soro ...	...
M/38-43	"	...	...	"	...	Dishes ...	Mapango...	Made of wood.
M/44	"	...	...	"	...	Bag ...	Kikunja ...	...
M/19	"	...	...	"	...	Bow and Arrows	...	Used for incising cattle to get blood.
M/46	"	...	...	"	...	Drum ...	Ngoma ya wasuko	Used by lunatics.
M/47	"	...	...	"	...	Ring ...	Rachi ...	For the neck.
M/49	"	...	...	"	...	Ear Ornament ...	Ngoshole...	For the male.
M/48	"	...	...	"	...	" "	Ishara	For the female.
M/50	"	...	...	"	...	" "	Mauro ...	" "
M/51	"	...	...	"	...	Snuff Box ...	Ombe ...	...
M/52	"	...	...	"	...	Bangle ...	Ombo ...	...
M/53	"	...	...	"	...	Bead Belt ...	Funga	...
M/54	"	...	...	"	...	Bead Shoulder Ornament	Moyo Kishede ...	...
M/55	"	...	...	"	...	Circumcising Razor ...	Mkikito ...	Used for women.
1	Mwanza	...	...	...	...	Model of Victoria Nyanza dhow	...	Built by Swahili builders.
2	"	...	...	...	...	Model of Uncapsizable Uzinza Canoe; Spear and Float used for hunting Hippopotamus	...	The spear is thrown into the animal at night time on lake shore: the shaft comes away and leaves the poisoned head in the beast, which swims away. At dawn the float is searched for and the animal pulled alongside the canoe.
3	"	...	...	...	...	Model of Uzinza Canoe...	...	...
4	"	...	...	...	...	" "	...	With specimen of stone from which colouring is made, and broken calabash for baling water.

## APPENDIX XII—continued.

No.	District.	Tribe.	Exhibits.		Remarks.
			English Name.	Local Name.	
5	Mwanza ... ..	...	Spear ... ..	...	Made and carried by Wasukuma for self-defence.
6	" ... ..	...	" ... ..	...	" ... "
7	" ... ..	...	Model of Uzinza Drawing Jar	...	" ... "
8	" ... ..	...	Snuff Boxes ... ..	...	Made and used by Wazinza.
9	" ... ..	...	Uzinza Calabash ... ..	...	For drinking water.
10	" ... ..	...	" ... ..	...	" — "
11	" ... ..	...	Model of Uzinza canoe...	...	" — "
12	" ... ..	...	Models showing evolution of Uzinza Arrow before iron smelting was discovered by natives.	...	—
13	" ... ..	...	Native hand-woven cloth	...	Natural dyes produced by tapping trees.
14	" ... ..	...	Model of shield ... ..	...	Made and used by Wazinza.
15	" ... ..	...	Basket ... ..	...	Made and used by Wazinza as receptacle for food.
16	" ... ..	...	" ... ..	...	" ... "
17	" ... ..	...	Uzinza Pipe with Tongue	...	To put ashes on tobacco.
18	" ... ..	...	" ... ..	...	" ... "
19	" ... ..	...	Basket ... ..	...	Made and used by Wazinza as plates.
20	" ... ..	...	" ... ..	...	" ... "
21	" ... ..	...	" ... ..	...	" ... "



22	"	...	...	"	...	...	Made and used by Wazinza as plates.
23	"	...	...	Axe	...	...	Old emblem of office of Sultans of Uzinza.
24	"	...	...	Model of Uzinza Cooking Pot and Spoon.	...	...	—
25	"	...	...	Model of Uzinza Cooking Pot.	...	...	—
26	"	...	...	Uzinza Calabash (for ladling water).	...	...	—
27	"	...	...	Model of Ukerewe Fishing Basket Trap.	...	...	—
28	"	...	...	"	...	...	"
29	"	...	...	Dancing "Ornaments"	...	...	Made and worn by Wasukuma.
30	Mwanza (Musoma)		...	Earrings	...	...	Worn by Wasimbiti women.
31	"	"	...	"	...	...	"
32	"	"	...	Ugaya Pipe with Tongs	...	...	To put ashes on tobacco.
33	"	"	...	"Mburete," hand embroidered and dressed goat skin.	...	...	Worn by the women of Ungruimi.
34	"	"	...	Model $\frac{1}{2}$ actual size of fish trap.	...	...	Used on Victoria Nyanza by Wajita.
35	"	"	...	"	...	...	"
E/D/3	Pangani	...	Waziguha	Walking Sticks	...	Fimbo	"
E/D/7	"	...	"	Walking Sticks, carved	...	Fimbo; Kihangay-sho	"
E/D/6	"	...	Wabondei	Tables	...	Meza	Made from one piece of wood.
E/D/1	"	...	"	Stools	...	Viti	"
E/C/1	"	...	"	Swahili Baskets	...	...	"
E/C/1	"	...	"		...	...	"
(6)							

## APPENDIX XII—continued.

No.	District.	Tribe.	Exhibit.		Remarks.
			English Name.	Local Name.	
E/C/2	Pangani ...	Wanawake ...	Mat for wall decoration...	Kihangasho	...
E/D/4	" ...	Wabondei ...	Carved Native Dish ...	Sahani ...	...
E/D/2	" ...	" ...	Specimens of carved Household Utensils.	...	...
E/D/5	" ...	" ...	Native Bowls ...	Bakuli ...	Made from one piece of wood.
C/C/3	Rufiji ...	Wanyagatwa	Canoe Paddles ...	Kafi ...	Used on the Rufiji river;
C/A/2	" ...	Wadengereko	Heavy Lion Spear ...	Mkuki ...	...
C/A/3	" ...	Matumbi ...	Light Lion Spear ...	" ...	...
C/C/1	" ...	Wanyagatwa	Model of dug-out Canoe	Matumbwi	Used on the Rufiji river; hollowed out of a tree trunk (Mvule).
C/B/6	" ...	Wadengereko	Grass Hat ...	Kofia ...	...
C/B/1	" ...	Wapogoro ...	Food Basket ...	Jamanda...	...
C/B/2	" ...	Wanyagatwa	Matting Sleeping Bag ...	Fumba ...	...
C/B/3	" ...	Wadengereko	Pruning Hook ...	Mundu ...	...
C/B/5	" ...	Wamatumbi	Model of Pestle and mortar.	Kinu ...	Used chiefly for making flour.
C/B/4	" ...	"	Coconut Graters ...	Mbuzi ...	...
C/A/1	" ...	"	Sword ...	Panga ; Sime	Now practically obsolete.
C/A/4	" ...	"	Bow and Arrows ...	Mishale na upinde	...
R/C/2	Rungwe ...	...	Woven Blankets and Cloths.	Bulanketi ; Ntandala.	...
R/B/8	" ...	Wanyamwanga.	Porridge Bowl ...	Entende ...	...
R/B/5	" ...	Wakinga ...	Axes ...	Nyengo ; Sengo	...

R/B/9	"	...	...	Snuff Boxes ...	Intekewe...	...
R/C/1	"	...	Wanyankusu	Native Baskets ...	Kibo ...	...
R/B/3	"	...	"	Copper Waist-belt ...	Linyeta ...	...
R/B/2	"	...	Wakinga ...	Grass Kilt ...	Mikindu ...	Worn chiefly at dances.
R/A/1	"	...	"	String Kilt ...	Kivikisa ...	...
R/B/1	"	...	Wanyankusu	Cow Bells ...	Mawangala ...	...
R/B/4	"	...	"	Drinking Cup ...	Kitana ...	...
H/B/1	Songea	...	Wayao ...	Bark Cloth Suit and Cap with grass lacing.	...	...
H/B/2	"	...	Wamatengo, Wapangwa	Hoes ...	Jembe ...	Both smelting and forging done by native workmen
H/D/1	"	...	Yao ...	Ivory Necklaces ...	Mkufu ...	Made by Yaos in the Songea district.
H/C/1	"	...	"	Sheath Knives with orna- mental handles.	Kisu ...	Native workmanship.
O/A/2	Tabora	...	Wanyamwezi	Necklaces ...	Senga ...	Worn by men.
O/A/3	"	...	"	Brass Bracelets ...	Komanzi...	"
O/B/12	"	...	"	Native Tooth Brushes ...	Miswaki or Misuaki.	...
O/C/5	"	...	Watusi ...	Straw Hats ...	Kofia ...	...
O/B/2	"	...	"	Drinking Cups ...	Masongo ...	...
(17)						
O/B/8	"	...	"	Bark Cloth ...	Mesani ...	...
O/C/4	"	...	Wanyamwezi	Specimens of native weaving.	Kakongo...	...
O/B/4	"	...	Wanyamwezi and Watusi	Clay Pipes ...	Kiko ...	...
O/B/13	"	...	"	Milk Pots ...	Chanzi ...	Shaped and hollowed from a block of wood.
O/A/1	"	...	Wanyamwezi	Head-dresses ...	Tenyangi	Worn by women at native dances.
O/B/6	"	...	"	Grass Brushes ...	Cheyo ...	...
O/B/1	"	...	"	Native Boxes ...	Kilindo ...	Used for storing grain.
O/C/2	"	...	Watusi ...	Grass Trays ...	Temeli ...	...
O/B/14	"	...	Wahehe ...	Beer Cups ...	Fizunzi ...	...

APPENDIX XII—continued.

No.	District.	Tribe.	Exhibit.		Remarks.
			English Name.	Local Name.	
O/B/16	Tabora ...	Wanyamwezi	Beer Cups ...	Vikota ...	...
O/I/11	" ...	"	Hoes ...	Jembe;	...
O/B/17	" ...	"	Axes ...	Igembi Shoka;	Forged by native black-smiths.
O/B/5	" ...	"	Types of Wooden Spoons	Mbasa Pawa ...	...
O/B/3	" ...	"	Native Stools ...	Rubehe; Umgule; Masumbe	Made from one piece of wood.
O/B/9	" ...	"	Types of Calabash ...	Lukuru ...	...
O/B/10	" ...	"	Types of Water Vessels	Lukuru; Mtendi	...
O/D/2	" ...	"	Ebony Candlestick ...	Mpingo ...	...
O/C/6	" ...	Wasukuma...	Specimens of Hand-spun Yarn	...	...
O/C/3	" ...	Wanyamwezi	Ebony Bowls ...	...	...
O/B/18	" ...	"	Wooden Milking Bowls...	...	...
W/C/3	Tanga ...	Swahili ...	Fish Trap ...	Dema ...	...
W/B/2	" ...	" ...	Wooden Spoon ...	Kijiko ...	...
W/B/3	" ...	" ...	Wooden Stool ...	Kiti ...	...
W/C/2	" ...	Wabondei ...	Black and White Moa Mats.	Mikeka ...	...
W/C/1	" ...	" ...	Coloured Mats ...	" ...	...
W/A/1	" ...	Wadigo ...	Bow and Quiver of Arrows.	Upinde na ziaka ya mishale	...
W/B/1	" ...	" ...	Native Tobacco Pipe ...	Kiko ...	...
W/C/4	" ...	" ...	Model dug-out Canoe ...	.	...

W/A/2	"	...	...	Wabondei	...	Drum	...	...	Ngoma	...	...
Q/B/1	Ufipa	...	...	Wabende	...	Native Basket	...	...	Kapanda	...	...
Q/B/2	"	...	...	"	...	Native Food Basket	...	...	Kisele	...	...
Q/C/1	"	...	...	"	...	Model Loom	...	...	...	...	Showing:—
											(1) The weaver's shuttle (Mpeleko) for weaving double cloth; (2) the thread on the loom (Kutantika); and (3) the portion of finished cloth.
Q/C/6	"	...	...	Wafipa	...	Box of Raw Cotton	...	...	...	...	Showing:—
											(1) Raw seed cotton from Zimba; (2) cotton lint.
Q/C/4	"	...	...	"	...	Spinning Instrument and Thread	...	...	Nkoselo;	...	...
									Uloze	...	...
Q/C/3	"	...	...	"	...	Thread for weaving	...	...	Masansa	...	...
Q/C/7	"	...	...	"	...	To tighten Cotton on loom	...	...	Mapampa	...	...
Q/C/2	"	...	...	Wapimbe, Wazimba	...	Types of Native Woven Cloth	...	...	Seketa	...	...
Q/C/5	"	...	...	Wapimbe	...	Native Comb	...	...	Kisaku	...	...
Q/C/8	"	...	...	Wafipa	...	Native Dyes	...	...	Msala;	...	Used for native weaving.
									Zanu;	...	<i>Exhibit "N."</i>
									Zanu	...	Yellow dye (Zanu), used by natives at Zimba.
										...	<i>Exhibit "M."</i>
										...	Black dye (Sombo). This consists of black earth taken from the Wuma river, Ufipa, and mixed with seeds which bind the earth.
										...	<i>Exhibit "O."</i>
										...	Brown dye (Msala). Taken from the bark of a tree grown at Zimba.

## APPENDIX XII—continued.

No.	District.	Tribe.	Exhibit.		Remarks.	
			English Name.	Local Name.		
F/D/1	Usambara	...	Wasambaa	Walking-stick ...	Fimbo; ... Kome	Used in the Usambara hills.
F/D/2	"	"	"	Hill-climbing Sticks ...	"	Rare types used in the Usambara hills.
F/A/1	"	"	"	War Spear ...	Mkuki ...	...
F/D/16	"	...	Wakilindi	Iron-shod Hill Sticks ...	Koma; Fimbo	...
F/B/7	"	...	"	Wooden Drinking Cups	Bilauri ...	...
F/B/9	"	...	Wabugu	Basket Milking Pail ...	"	...
F/B/5	"	...	Wasambaa	Baskets ...	Diti; Hanka	These baskets are used as measures of capacity, mostly for sale of flour.
F/B/2	"	...	Wazigua	Market Baskets made of palm	Vikapo ...	...
F/B/1	"	...	Wasambaa	Food Dishes ...	Bakuli ...	...
F/B/10	"	...	"	Native Stool ...	Kiti ...	Made from one piece of wood.
F/A/3	"	...	"	Musical Instruments ...	Tanzi ...	...
F/B/12	"	...	Wazigua	Marketing Baskets ...	Dunga ...	...
F/B/15	"	...	"	Pokers for fires ...	Ngoda ...	...
F/B/16	"	...	Wasambaa	Earthen Native Pipe ...	Kiko ...	...
F/A/11	"	...	"	Shield ...	Ngao ...	Made of rhino hide.
F/B/19	"	...	Wazigua	Beer Sieve ...	Nkome ...	...
F/A/8	"	...	Wasambaa Wamanyema.	Musical Instruments ...	Kayamba; Kisonge	These are played by swaying to the right and left and thumping alternately with the right and left thumb.

F/A/10	"	...	Wasambaa ...	Musical Instrument ...	Zumari ...	...
F/B/20	"	...	Wazigua ...	Rat Traps ...	Luta ...	Once a rat is in, it is unable to get back owing to the pressure.
F/B/13	"	...	" ...	Hand Bags ...	Kodinga ...	...
F/B/17	"	...	Wasambaa ...	Types of Wooden Spoons	Vijiko; Luko	...
F/A/7	"	...	Wamanyema	Bead Ornaments ...	Kisonge ...	Worn round the forehead at native dances.
F/B/14	"	...	Wasambaa ...	Bags ...	Kidunga ...	For carrying papers, money, etc., and tobacco pouches.
F/A/5	"	...	Wamanyema	Bead Ornament ...	Kisonge ...	Worn round the breast at native dances.
F/A/6	"	...	"	"	"	Worn round the neck at native dances.
F/A/4	"	...	"	"	"	Worn at native dances.
F/B/11	"	...	Wazigua ...	Baskets ...	Tundu ...	For carrying fowls on a journey.
F/B/18	"	...	Wanyamwezi	Water Ladle ...	Kota ...	...
F/B/22	"	...	Wazigua ...	Types of Flour Baskets	Ungo ...	...
F/A/9	"	...	Wasambaa ...	Musical Instrument ...	Zeze ...	...
F/B/21	"	...	"	Food Tray ...	Kihungu ...	...
F/D/3	"	...	"	Clay Models ...	"	...
F/B/3	"	...	"	Native Hats ...	Kofia ...	Made of palm grass.
F/A/2	"	...	"	Old Knife ...	Panga; Kimangale	Used by the Wasambaa in the wars against the Wakilindi.
...	...	...	...	Occasional Inlaid Table	...	Made from local timber by the lunatics at the Lutinde Asylum.
T.T.1	Tanganyika (general)	...	...	Bellows ...	Mifuo ...	Used by iron workers all over the Territory.
T.T.2	...	...	...	Clay Nozzles ...	Kelwa ...	The two tubes from the bellows fit into these.
T.T.3	...	...	...	Fastening ...	Komeo ...	For the inside of a door.

APPENDIX XII—*continued.*

No.	District.	Tribe.	Exhibit.		Remarks.
			English Name.	Local Name.	
T.T.4	...	...	Hasp ... ..	Tumbuu ...	For the outside of the door of the house.
T.T.5	...	...	Bill-hook ... ..	Mundu ...	Used for clearing the bush.
T.T.6	...	...	Knife ... ..	Kisu cha Ukindu	Used by the women when splitting the palm leaves used for making native mats.



APPENDIX XII—*continued.*

## E.—TROPHIES, ETC.

No.	Exhibitor.	Exhibit.	Remarks.
46	E. E. Hulley, Morogoro ... ..	Skeleton of python ... ..	From the Uluguru Hills.
120	D. Prain, Rufiji ... ..	Heads of Kudu and Sable Antelope ...	
122	Col. Maxwell, Dar es Salaam ...	Horns of Greater Kudu and Grant's Gazelle.	
121	C. Pook, Dar es Salaam ... ..	Horns of Eland and Grant's Gazelle ...	...
99	Dr. Davey, Dar es Salaam ...	Arab Chest ... ..	...
334	L. E. B. Anthony, Dodoma ...	Rug made of Colobus Monkey Skins ...	...

The illustrations in the Handbook are from photographs lent by Messrs. C. Gilman, C. W. Hurst, G. G. Jackson, M. van Jarsveld, A. M. Karimjee, P. E. Mitchell, Major J. C. Mance, Colonel Maxwell (General Manager, Railways), and Captain C. N. Wedge. The cover design was made from a photograph lent by the Hon. Mrs. C. Dundas.

# KAMPALA GENERAL AGENCY LIMITED

(Incorporated in Uganda).

Head Office :—KAMPALA (Uganda) P.O. Box 118.

Branches :—	MOMBASA (Kenya)	P.O. Box 146.
	JINJA (Uganda)	.. 48.
	MBALE (Uganda)	.. 48.
	MWANZA (Tanganyika)	.. 20.

Dealers in :—

COTTON, COTTON PIECEGOODS, GIN STORES,  
GUNNY BAGS, HESSIAN CLOTH, TWINE, ETC.  
- AND PRODUCE OF EVERY DESCRIPTION.

## CLEARING, FORWARDING & SHIPPING AGENTS

*Cotton Ginning Factories at :—*

**BAMUNANIKA, NAKIWATE & SEMUTE**  
(Buganda Province)

**KANYUM & SIRIKE VALLEY** (Eastern Province)

*Baling Press at :—*

**LUZIRA, KAMPALA** (Buganda Province)

*Representatives of :—*

**BAKUBHAI & AMBALAL, LTD.,**  
53 New Broad Street, London, E.C. 2.

**UGANDA COTTON TRADING CO., LTD.,**  
65 Apollo Street, Fort, Bombay.

**Chief Agents to JUPITOR GENERAL INSURANCE  
CO., LTD., for East African Territories.**

*Shipping Agents at Mombasa for Cowasji Dinshaw  
& Bros.' Coastal Steamship Service.*

# RUFIJI DELTA TRADING COY

## Timber & General Merchants

---

<i>Head Office :</i>	<i>Telegraphic Address :</i>	<i>Branches :</i>
P.O. BOX, 31 DAR ES SALAAM, TANGANYIKA TERRITORY.	“RUDELTA” <i>Code :</i> BENTLEY'S	SALALE AND KISAKI. MANGROVE CONCESSION AT THE RUFIJI DELTA.

---

- ¶ We undertake to supply all products of the MANGROVE TREE TIMBER, which is insect resistant, POLES of all sizes and varieties and MANGROVE BARK, which ranks among the finest in the world.
- ¶ River transport undertaken at reasonable rates.
- ¶ Make a point of seeing our exhibit. If you are interested in this class of business it will repay your trouble. If not, come and see what we produce.
- ¶ Consult our representative on the spot. He is at your disposal at all times.
- ¶ Agencies for Tanganyika Territory and the East Coast wanted in every line. We will push your goods.

---

Sole Agents in Tanganyika Territory for:—

THE NORWICH UNION FIRE INSURANCE SOCIETY, LTD. . . AND  
THE LIVERPOOL MARINE AND GENERAL INSURANCE CO., LTD.

# COFFEE GROWING

For those desiring a First-class Estate developed for them. Blocks varying from 250 acres and upwards of

## FREEHOLD COFFEE LAND

WILL BE SOLD

The purchase price of the land can be paid either in instalments at low rate of interest, or outright if so desired.



ARABIAN COFFEE GROWING UNDER SHADE

Any acreage will be developed and brought into bearing for cost price by experienced planters.

The foregoing is of special interest to those who are desirous of owning a Coffee Estate; but who do not wish, or who are unable, either to employ a manager, or to manage it themselves, until the producing stage is reached (3½ years after planting).

The Estates will be kept in good order and will be handed over, at any time, to the owner for his direct management.

*For further information apply to :*

**MANAGER, Bulwa Estate, Amani,  
TANGA = = Tanganyika Territory**

OR TO

**G. F. CLARK = = = = Solicitor  
35 Bucklersbury, LONDON, E.C. 4**

# DAYABHAI WALJI & Co.

*Merchants & Commission Agents,*  
*— Importers & Exporters, —*

## DAR ES SALAAM

(TANGANYIKA TERRITORY).

Established 1895.

P.O. Box No. 3.

Telegraphic Address: "STAR," Dar-es-Salaam.

Codes used: A B C, 5th, 6th, and Bentley's.

---

Partners :

DAYABHAI WALJI.

SULEMAN DAYA

*(Broker to the National Bank of  
India Ltd., Dar es Salaam Branch)*

---

Sole Agents for

VAN NELLE'S OVERSEA TRADING COMPANY.

MANUFACTURERS "RISING HOPE" TOBACCO.

# STEWART'S STORES.

Proprietors:—

**The East African Engineering  
and Trading Co., Ltd.**

Telegrams: "MASDO."

Post Box 10.

**DAR ES SALAAM. 4 DEVONSHIRE SQUARE,  
LONDON.**

---

## General Merchants and Outfitters.

High Class Provisions, Wines and Spirits,  
Sporting and Safari Outfitting. Guns,  
Ammunition, Hardware, Crockery, Glass-  
ware, Boots and Shoes, Sports Gear, etc.

---

**PRICES COMPARATIVELY CHEAPER  
THAN THOSE OF LONDON STORES.**

---

## BIG GAME HUNTING.

Complete arrangements made for outfitting  
and conducting Individuals and Parties. Re-  
liable and experienced professional hunters  
. . . . . arranged for . . . . .

---

In Tanganyika Territory a Finer Collection of Big  
Game can be obtained with less Travelling and  
Expense than in any other Part of the World.

*For full particulars apply at the Tanganyika Court or  
above address.*

# THE EAST AFRICAN ENGINEERING AND TRADING CO., LTD.

TABORA :: :: :: :: DAR ES SALAAM  
4 Devonshire Square, LONDON, E.C. 2

**Electrical, Mechanical, Mining  
Engineers and Contractors**

---

**Suppliers of Highest Grades of  
Ruby Clear and Green Mica**

---

also Underground and Overhead  
**Gum Animi**

**SAMPLING AND REPORTS  
ON MINING PROPOSITIONS  
UNDERTAKEN**

*AGENTS FOR*

**GENERAL ELECTRIC Co., LTD.—THE AGRICULTURAL AND  
GENERAL ENGINEERS, LTD.—AVELING AND PORTER, LTD.  
BLACKSTONE AND Co., LTD.—RICHARD GARRETT AND SON,  
LTD.—JAMES AND FREDK. HOWARD, LTD.—MOËT AND  
CHANDON—FINDLATER, MACKIE AND TODD, LTD. (WINES  
AND SPIRITS)—TEACHER'S HIGHLAND CREAM WHISKY—  
GREER'S INNS OF COURT WHISKY—NAPIER JOHNSTONE'S  
N.J. CLUB WHISKY :: :: :: :: :: ETC., ETC.**

---

*Full particulars from TANGANYIKA COURT or above address*

**KARGAROTOS & Co.,**  
**BUKOBA,**  
**Tanganyika Territory.**

---

ESTABLISHED SINCE 1903.

---

**Dealers and Exporters**  
**OF**  
**Produce, Hides and Skins.**

---

*Commission, Clearing and  
Forwarding Agents.*



Telephone :  
REGENT 1109  
" 1110  
" 633



Telegrams :  
COFFEEMILL,  
PICCY, LONDON.

BY APPOINTMENT  
TO H.M. KING GEORGE V.

# KILIMANJARO and ARUSHA COFFEE

2s. 6d. per lb., whole or ground.

ROASTED DAILY ON THE PREMISES.

---

---

**JAMES LYLE & Co., Ltd.,**

23a, Savile Row  
1, 2, 3, 3a, Boyle Street } Adjoining

**LONDON, W. 1.**

Established in Old Bond Street in 1811.

**COFFEE  
TEA  
SUGAR  
WINES  
and  
SPIRITS.**

# *The Latest Fashion in Furs*

If you are unable to visit  
TANGANYIKA TERRITORY you  
can, however, purchase some  
of my handsome, reliable  
and fashionable

## **HYRAX FURS**

The finest produced in the Territory,  
obtainable in COAT LENGTHS,  
STOLES and MUFFS, MOTOR RUGS  
and KAROSSES, perfectly matched,  
combining refinement of taste with the  
highest grade of excellence. At moderate  
prices.

**Buy direct.**

**Prices and Patterns on application.**

**Orders executed by post to all parts of the World.**

---

**EDGAR R. BEECH**

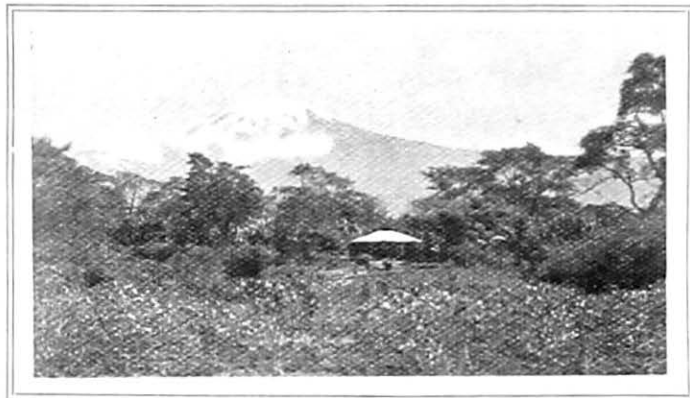
**Furrier**

**BOX 27 MOSHI, TANGANYIKA TERRITORY.**

*I am visiting England April to September, 1924.  
Address enquiries—c/o Messrs. The Standard Bank of  
South Africa Ltd., 10, Clements Lane, Lombard  
Street, London, E.C. 4.*

# AN IDEAL COFFEE ESTATE

MOSHI, MOUNT KILIMANJARO



AN IDEAL COFFEE ESTATE, MOSHI, MOUNT KILIMANJARO

IF YOU INTEND VISITING TANGANYIKA TERRITORY  
OR WISH TO INVEST IN OR ACQUIRE

CHOICE AND PROFITABLE

## Coffee Estates and Plantations

SITUATED IN THE BEAUTIFUL AND HEALTHY  
HIGHLANDS SURROUNDING  
Mount Kilimanjaro

*Be sure and communicate with:*

**EDGAR R. BEECH**

**Coffee Planter, Buyer and Exporter, Real Estate and  
General Agent**

**Box 27 MOSHI, Tanganyika Territory**

*I am visiting England April to September, 1924. Address enquiries care of  
Messrs. The Standard Bank of South Africa, Ltd., 10 Clements Lane,  
Lombard Street, London, E.C. 4.*

FIRMS DESIROUS OF OBTAINING DIRECT SUPPLIES OF  
**KILIMANJARO COFFEE**

CAN DO SO THROUGH ME. ALL PARTS OF THE WORLD SUPPLIED.

THE  
**CEYLON JEWELLERY MART.**

ACACIA AVENUE,

**DAR ES SALAAM.**

Telegraphic Address:

"**CELERITY,**"

Dar es Salaam.

P.O. Box 92,

Dar es Salaam,

Tanganyika Territory.

Manufacturing Jewellers, Gem Merchants,  
Ivory and Ebony Carvers, Engravers, Watch  
Repairers. Suppliers of African fur, Ceylon  
hand-made lace, World-famous Ceylon teas,  
Tortoise-shell goods and all Ceylon curios.

~~~~~  
Please visit the Tanganyika Court, East African  
Pavilion, and have a look at our display of famous  
products, which will convince you.

**KASSUM SUNDERJI SAMJI,**

Wholesale and Retail Provision  
. . and Grocery Merchant . . .

P.O. Box 69,

**DAR ES SALAAM,**  
TANGANYIKA TERRITORY.

Fresh Stocks constantly arriving.  
Direct Importers from England, etc.  
**ALL AT REDUCED PRICES.**

Up-country Orders executed with special despatch.  
Packing and delivery to Dar es Salaam Station free.

# LEWIS & PEAT, L<sup>TD.</sup>

OLD ESTABLISHED.

6, Mincing Lane, London, E.C.3.

ALSO MEMBERS OF THE BALTIC EXCHANGE.

*General Produce Brokers.*

---

**SPECIALITIES : COFFEE.**

**KENYA (NAIROBI), UGANDA, TORO, TANGANYIKA,  
KILIMANJARO, MARANGU, ARUSHA, MERU, AMANI,  
BUKOBA, etc.**

**See our Special Report.**

**IVORY, COCOA, RUBBER, PEAS, BEANS, GROUND NUTS,  
and all kinds of Seeds.**

**COPRA, PALM KERNELS, SISAL HEMP, MAIZE,  
SPICES, BEESWAX, MIMOSA BARK.**

---

TELEGRAPHIC ADDRESS :  
"Merchandise, Fen, London."

TELEPHONE :  
Avenue 5000 (7 Lines).

# THE CLAN LINE STEAMERS, LTD.

**From NEWPORT (Mon.), GLASGOW and BIRKENHEAD  
to all SOUTH and EAST AFRICAN PORTS**

*Steamers are dispatched regularly, sailing to:—*

CAPE TOWN (direct), MOSSEL BAY, ALGOA BAY, and EAST LONDON, NATAL (direct), DELAGOA BAY, BEIRA, and MAURITIUS, and thus offer the most favourable opportunities for the prompt delivery of Machinery and other Goods shipped from NEWPORT (Mon.), GLASGOW and BIRKENHEAD.

Goods are cleared through the Customs and forwarded with dispatch on Bills of Lading and Invoices being sent to the Agents.

From South and East African Ports, Steamers are dispatched regularly to Continental Ports, LIVERPOOL and GLASGOW, and from MADAGASCAR to LONDON and Continental Ports.

*For further particulars apply to the Agents:*

THOMSON, WATSON and CO., Cape Town

HUDSON, VREEDE and CO., Mossel Bay

PALMER, WOMERSLEY and CO., Port Elizabeth

PALMER, WOMERSLEY and CO., East London

STEEL, MURRAY and CO., Durban

LOURENCO MARQUES FORWARDING CO., Ltd., Delagoa Bay

THE MANICA TRADING CO., Ltd., Beira

ADAM and CO., Mauritius

AFRICAN MERCANTILE CO., Ltd.

PARRY LEON and CO., Johannesburg } Zanzibar

JOSEPH TYACK, Tananarive, Madagascar } Mombasa

OR AT HOME TO:

**CAYZER, IRVINE & Co., Ltd.**  
LONDON, LIVERPOOL, GLASGOW, or  
**PERCIVAL & Co., MANCHESTER**

**Wm. Jas. & Hy. Thompson**

---

*Produce Brokers*

---

**38 Mincing Lane, E.C.3**

---

---

**TEA**  
**COFFEE**  
**COCOA**  
**RUBBER**

---

---

*Telephone:* Avenue 6530.

*Telegrams:* Thompson, Fen. London.

# Ranti de Silva & Brothers, DAR ES SALAAM.

P.O. Box 91.

Telegrams :—"Ranti," Jeweller.

---

---

**Manufacturing Jewellers & Watchmakers**

---

---

Dealers in Precious Stones.

Ivory Carvers and Dealers in Ebony  
Curios and Oriental Art Wares.



Ceylon Tea, Ceylon Hand-made Laces, Cigarette  
Cases for Ladies and Gentlemen (in Hall-marked  
Sterling Silver, Ivory and Tortoise Shell).

---

---

Wilka Wristlet Watches,  
etc., Conklin Fountain Pens,

**ALL ORDERS PROMPTLY EXECUTED.**

---

---

Branch at Zanzibar, opposite Standard Bank of South Africa.



# Wm. Tanner Boxwell, Son

and Company

C10 & 13 & D5, EXCHANGE BLDGS.

## LIVERPOOL

Telegrams :  
"BOXWELL,  
LIVERPOOL."

Code :  
A.B.C. 5th & 6th Editions.  
General Telegraph Code.  
Bentley's Code.

Telephones :  
Central 498  
Central 1543  
(Cotton)

---

---

## *COTTON, COLONIAL AND GENERAL PRODUCE BROKERS*

---

---

**Cotton** (*all descriptions*)

**Coffee** (*all descriptions*)

**Cocoa**

**Cottonseed**

**Cottonseed Cake**

**Castor Seed**

**Carnauba Wax**

**Hemp**

**Jute**

**Sisal Fibre**

**Maize and Farinha**

**Hides**

---

**Bankers: LLOYDS BANK, LTD., LIVERPOOL.**

**IMPORT & EXPORT**

---

**CHALMERS GUTHRIE  
& CO., LTD.**

---

ESTABLISHED 1793

---

**Merchant Bankers  
9 Idol Lane  
E.C.3**

TELEPHONE .. .. ROYAL 2409, 2410  
CABLES .. .. OMPHALE, LONDON

# COFFEE LAND

## FOR THOSE DESIRING TO PURCHASE FREEHOLD COFFEE LAND

of excellent quality, within easy access to railway and within a day from the sea-port town of Tanga, situated amidst delightful scenery in a healthy locality in the Usumbara Mountains.



CATTLE AND CATTLE SHEDS, WITH BACKGROUND OF  
ARABIAN COFFEE GROWING UNDER SHADE

A house site and ample water supply on each block of land, which produces highest grade Arabian Coffee. English vegetables, fruits and flowers are successfully grown.

Cattle and ponies do well on the estate.

Big Game within easy distance.

### LOW PRICE PER ACRE

Land either sold outright or on easy terms at low rate of interest

*For enquiries apply to :*

**MANAGER, Bulwa Estate, Amani,  
TANGA = = Tanganyika Territory**

OR TO

**G. F. CLARK = = = = Solicitor  
35 Bucklersbury, LONDON, E.C. 4**

**IF** you desire to **OPEN** or **EXTEND**  
Business Relations with

## **TANGANYIKA TERRITORY**

(a country of Most Valuable Resources, as shown by the Exhibition  
and this Handbook)

# **Advertise**

IN THE

## **“Dar es Salaam Times”**

the **ONLY NEWSPAPER** published in the Territory  
and circulating throughout the whole of the country,  
as well as in other parts of Eastern Africa.

---

Send for Specimen Copy and Schedule of Advertising  
Rates to the Proprietors and Publishers:—

**Dar es Salaam Printing  
and Publishing Works ..  
Dar es Salaam .** TANGANYIKA  
TERRITORY

P.O. Box 40

Telegrams—“Publishing”

---

*LONDON AGENTS:—*

**THE AFRICAN AND COLONIAL PRESS AGENCY  
9 QUALITY COURT, CHANCERY LANE, W.C. 2**

Cable Address:  
ALLANDEALE, LONDON

Telephone:  
CENTRAL 9572

ESTABLISHED 1874

# T. H. ALLAN & CO.

BANKERS AND MERCHANTS  
17 Gracechurch Street, London, E.C. 3

CONSIGNMENTS OF

COFFEE

COCOA

TEA

RUBBER

*and all kinds of Produce  
marketed to best  
advantage.*

INSURANCE

*Effectuated on exceptionally  
favourable terms.*



ADVANCES

*Arranged against consignments.*

*Planters' Stores, Tools, Machinery, etc.  
purchased on commission*

AGENT:

C. C. MONCKTON & CO.

P.O. BOX 310, NAIROBI .. KENYA COLONY

# REEL & WILSON

Taxidermists and Furriers,

TANGA,

TANGANYIKA TERRITORY.

---

---

Can supply African Fur Goods.

Rugs, Coats, Stoles, Muffs, etc.

---

---

**BIG GAME HUNTING**

**A SPECIALITY.**

---

---

**Guides to Big Game Hunting Parties.**

*Particulars on application.*

---



FURS  
RUGS  
SKINS

# Edward Gerrard & Sons,

Naturalists, Taxidermists,  
Furriers and Osteologists.

*Natural History Studios,*

COLLEGE PLACE, CAMDEN TOWN

(Near Royal Veterinary College),

Phone:  
RTH 2358.

LONDON, N.W.1.

**in Dressing, Trophy Modelling and Mounting  
in all branches.**

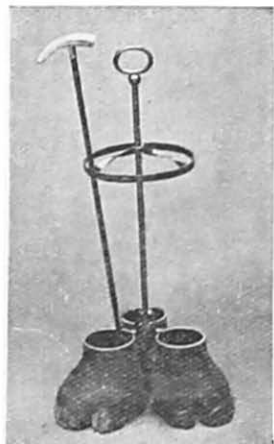


---

Appointed to SUPPLY  
and DISPLAY the BIG  
GAME TROPHIES in  
the KENYA and TAN-  
GANYIKA SECTIONS of  
the BRITISH EMPIRE  
EXHIBITION

---

*Estimates and Designs  
on application.*



*Established in 1780.*

# PIGGOTT BROTHERS AND COMPANY :: :: LIM

*Manufacturers of*

## TENTS & EQUIPMENT

COMPLETE OUTFITS FOR ALL PARTS OF THE EMPIRE



Our Special SQUATTER'S or COLONIAL TENT, which is supplied with Veranda, Bath Room, Ground Sheet, and every Requisite supplied for Prospecting, Exploring, Mining Eng. etc., Scientific and Geographical Research Expeditions. Folding Bedsteads and Bedding, Mosquito Curtains, Airtight Folding Furniture, Tropical Clothing, etc., etc.

*On view in our spacious Showrooms.*

**PATENTEES & BUILDERS** of Motor Trailer Car

WATERPROOF WAGON COVERS AND TARPAULIN SHEETS  
CATALOGUE POST FREE.

**220/6, BISHOPSGATE, LONDON, E**







CABLES:  
GILLIAT. LOI

---

---

# JOHN A. GILLIAT & CO. LTD.

CROSBY SQUARE,

LONDON, E.C. 3.

---

---

PRODUCE OF ALL KINDS  
FINANCED and MARKETED

---

---

ENTS IN

KA—

Distrib

J. W.

MA

Cotton-~~...~~

# ROSEHAUGH COMPANY LIMITED

REGISTERED OFFICE :

4 Buckingham Gate, London, S.W.

AND AT

11 Queen Street, Colombo, Ceylon

5 Rumsford Place . . . . . Liverpool

