

(4)

सर्वोच्च न्यायालय
GOVERNMENT
OF
BOMBAY



BOMBAY MARCHES ON...



**No. 4 BACKWARD CLASSES,
FISHERIES & REHABILITATION**

ISSUED BY
THE DIRECTORATE OF PUBLICITY, GOVERNMENT OF BOMBAY

BOMBAY MARCHES ON...

**NO. 4 BACKWARD CLASSES,
FISHERIES & REHABILITATION**



Shri G. D. Tapase, Minister for Industries, Fisheries & Backward Classes

BOMBAY MARCHES ON . . .

*A Review of the Work and Activities of the Government
of Bombay for the Period from October 1947 to March 1949*

NO. 4 BACKWARD CLASSES, FISHERIES & REHABILITATION

Price 4 Annas

Issued by
THE DIRECTORATE OF PUBLICITY, GOVERNMENT OF BOMBAY
BOMBAY
1950

First Published June 1950



A PROGRAMME OF AMELIORATION FOR THE BACKWARD CLASSES

Social and Economic Equality

THE policy of the Government with regard to the Backward Classes may be aptly described as a policy aiming at the elimination of the backwardness of these communities and at assisting and promoting their assimilation with the rest of society on a footing of equality in as short a span of time as possible. This policy is sought to be implemented through the existing administrative departments of the Government, and the Backward Class Department endeavours in the main to co-ordinate the work relating to the Backward Classes and to encourage them to take advantage of the facilities offered by the Government through the various Departments. Since October 1947, the Department has been considerably strengthened and today there are 13 Backward Class Welfare Officers in charge of one or more districts and five Assistant Backward Class Officers to assist the Backward Class Officer

in dealing with the problem of the Backward Classes all over the Province. In addition to these officials, District Backward Class Committees have been set up in all districts with Collectors as ex-officio Chairmen and having Backward Class members from each taluka to advise on the problems of the Backward Classes of each district.

NO MORE "CRIMINAL TRIBES"

In the autumn session of the Legislature held in 1947, soon after the attainment of Independence, legislation to deal with criminals by virtue of their criminal habits and irrespective of their caste or communal affiliations was incorporated and passed in the Bombay Habitual Offenders' Restriction Act, 1947. This act was placed on the Statute Book on December 31, 1947 with the assent of the Governor General. A period of two years from the date of enactment of this Act was statutorily laid down under the Act as the maximum period within which the Criminal Tribes Act in its application to this Province must cease. The winding up of the Criminal Tribes Act administration has been progressing rapidly.

The total population of criminal tribes in the three remaining Settlements at Ahmedabad, Sholapur and Hubli on March 31, 1949 was as follows:

	<i>Registered members</i>	<i>Unregistered dependants</i>	<i>Total</i>
Settlements	463	386	849
Free Colonies	264	597	861

These three major Settlements are also expected to be closed down shortly on an auspicious occasion which will also be availed of to remove the black Act from the Statute Book for good as far as this Province is concerned.

TRANSFORMING SETTLEMENTS INTO WELFARE CENTRES

With the closing down of the Criminal Tribes Settlements in those places where the Settlements had in and around them a considerable concentration of population of the tribes

designated as criminal, most of whom have in recent years taken to industrial labour, the question of transforming the Settlements into Labour Welfare Centres is under consideration. At Gadag, the old Settlement has already been taken over by the Labour Welfare Department and is undergoing necessary additions and alterations for such transformation. It is proposed to have similar centres at Sholapur and Hubli. Some of the Settlements, particularly those where there was no fixed population, have been handed over to the Juvenile and Beggars Department, which is to deal with habitual offenders for use as asylums under the Habitual Offenders' Restriction Act. With regard to the other needs of persons belonging to the tribes so far designated as criminal, these are to be catered for by the Backward Class Department and the members of these tribes are to be looked after in the same manner as the other Backward Classes.

ABOLITION OF UNTOUCHABILITY

Harijans, who form an important section of the Backward Classes, owe their backwardness and all other associated problems chiefly to the stigma of untouchability attaching to them. Untouchability has now been made a definite crime in all its subtle forms and aspects. The chief sanction behind it was religion. With the Bombay Harijan Temple Entry Act, 1947 and the Bombay Harijan Temple Entry (Amendment) Act, 1948, every temple, which means a place, by whatever name known and to whomsoever belonging, which is used as a place of religious worship by custom, usage or otherwise by members of the Hindu community or any section thereof and includes all land appurtenant thereto and subsidiary shrines attached to any such place, is thrown open to Harijans for worship in the same manner and to the same extent as to any member of the Hindu community or any section thereof and Harijans are equally entitled to bathe in or use the waters of any sacred tank, well, spring or watercourse. Offences under this Act are made cognisable by the police.

It is gratifying to record that almost all the important religious places in the Province have been voluntarily thrown

open to Harijans with the passage of this Act. Once untouchability disappears from the *sanctum sanctorum*, its disappearance elsewhere should not take long. Under the Harijan (Removal of Social Disabilities) Act, 1946, which was placed on the Statute Book just a few months before Independence Day, 1947, free access to places of public amusement, places of public entertainment, shops, sources of water supply, bathing places, burial and cremation grounds, any sanitary convenience, roads or pathways, etc., which members of all other castes and classes of Hindus have a right to use or have access to is given to Harijans. By making offences under both these Acts cognisable, it is assured that the Acts will not be still-born.

The official agency of the Backward Class Department and voluntary agencies devoted to the cause of the removal of untouchability which are officially recognised and encouraged to carry on propaganda by suitable grants-in-aid for these activities strive to see that the benefits of this legislation actually reach Harijans of all sections in all parts of the Province.

CRUX OF THE ADIVASI PROBLEM

The Adivasis, another important section, too suffer from segregation which was the result partly of imperfect and undeveloped communications between their habitats and the rest of the Province and partly of differences in their culture. These factors which kept them aloof from the main stream of educational and social advancement were responsible for abysmal ignorance which in turn made them particularly susceptible to and liable for economic exploitation by unscrupulous sowcars and landlords. A constructive approach to problems of amelioration of Adivasis as also of the other sections of the Backward Classes may be made from two directions, viz., (i) educational and social, and (ii) economic.

With regard to education, primary education is now free and compulsory in all villages with a population of 1,000 or

over. It was realised that in the backward tracts, preponderantly inhabited by the Adivasis where the population is dispersed in small and scattered hamlets, special measures were necessary for the introduction of compulsory education since the general condition postulated for the introduction of compulsion, viz., existence of a population of 1,000 or over, was not likely to be found easy of fulfilment in these tracts.

THANA EXPERIMENT

A start was made with the Thana District, where a special survey was conducted by a committee under the chairmanship of Mr. D. N. Wandrekar, M.L.A., Parliamentary Secretary to the Minister for Industries, Fisheries and Backward Classes. The recommendations of this Committee have been accepted by the Government and a start in the implementation of these recommendations is being made with one taluka, viz., the Umbergaon Taluka of the Thana District. Within three years the scheme is to be extended to the other Adivasi tracts of the Thana District.

Similar survey committees have been appointed in the districts of Nasik, West Khandesh, Kanara, Panch Mahals and Kolaba where similar problems obtain. In addition to free compulsory education, wherever compulsion is introduced arrangements are made to give slates and books to pupils from the Backward Classes at the cost of the State. In addition, there are several sets of scholarships for pupils in the higher primary classes distributed on merit all over the Province.

IMPETUS TO SECONDARY EDUCATION

With regard to secondary education, this has been made free for all boys and girls within specified age-limits from the Backward Classes, subject to good conduct and progress. For higher education, not only freeships but also scholarships varying in value according to the needs of each course are given on the same universal basis as freeships in secondary

schools. In addition, special scholarships are given for professional courses. Deserving Backward Class students in secondary schools and colleges are also awarded lump grants for purchasing books and school equipment as well as for examination fees. During the years 1947-48 and 1948-49, the Government spent about Rs. 27,400 and Rs. 47,500, respectively, on this account.

All the above facilities are supplemented by a vast network of hostels conducted through District School Boards for primary students in some areas. In addition, the voluntary agencies are given grants for maintaining hostels for Backward Class children under special rules. The rates of grants-in-aid paid to recognised hostels were generally enhanced in August, 1948. As a result of this liberalisation of grants, the number of hostels catering for the Backward Classes has increased to a great extent. There are today 111 hostels for boys and 33 hostels for girls catering for all sections of the Backward Classes spread over the Province and receiving grants from the Backward Class Department.

HOSTEL FACILITIES

The Government Hostel at Poona, which is entirely financed and managed by the Government, has now been shifted to the newly constructed building costing Rs. 1½ lakhs. As accommodation in the old rented building was limited, admission to the hostel was restricted to 64 students only, but now this number has been raised to 80.

In order to enable voluntary agencies to provide suitable buildings for hostel purposes, the Government has approved of a scheme under which building grants are paid for construction of hostel buildings to recognised agencies on a scale prescribed by the Government. During the period from October 1947 to March 1949, a sum of Rs. 10,000 was accordingly paid as building grants to Backward Class Hostels at Sholapur, Godhra and Jessawada (Panch Mahals District).

SETTLEMENT IN CRAFTS AND TRADES

On the economic front, in addition to arrangements made for imparting training in various crafts and trades and in the hereditary occupations of the Backward Classes, facilities are given through various schemes for trained personnel to set themselves up in the crafts and trades concerned. The Government has sanctioned 29 scholarships of Rs. 30 per mensem each for being awarded to selected Backward Class students undergoing training in (i) Accountancy, (ii) Secretarial work, (iii) Architecture and Commercial Art, (iv) Dentistry, (v) Forestry and (vi) short-term courses in shorthand and typewriting, motor driving and tractor ploughing. In addition to facilities available to industrial co-operative societies in general, special facilities are given to co-operative societies formed preponderantly of members of the Backward Classes.

In the field of agriculture, to facilitate resettlement of the Backward Classes on land, the Government has issued orders, specifying the preferential basis on which waste lands are to be given out for cultivation to different classes of applicants. At the top of this order of priority are Backward Class agriculturists from villages in which the waste lands are situated. The Backward Classes are now growing conscious of these concessions granted to them, and as a result, a number of applications for agricultural lands were received by the Backward Class Welfare Officers. Their applications were forwarded to the Revenue authorities concerned with due recommendations. Other facilities such as interest-free tagavi for purchase of implements and cattle, and subsidies and tagavi for irrigation wells, etc., are given on a large scale. A post-war reconstruction scheme for agricultural advancement of the Backward Classes is also under consideration. A considerable proportion of the Backward Classes are engaged in forestry. Till almost the other day, they were "hewers of wood" and manufacturers of charcoal whose condition differed little from that of slaves. The forest labourers received a pittance for their living and were often cheated of their rightful earnings, which unscrupulous contractors could afford

to do because of the former's ignorance in general. A new experiment with vast potentialities was started with the attainment of Independence.

ECONOMIC INDEPENDENCE

This new experiment aims at making the Adivasi forest labourers their own masters and strives to eliminate the middleman class of contractors. Forest labourers' co-operative societies have been formed which are entrusted with the exploitation of forest coupes, a task which previously yielded big profits to the middleman. These societies not merely ensure that proper wages are paid at prescribed rates and at required intervals but also serve as valuable instruments in the task of imparting social education to their members who are taught to manage their own affairs and generally to be self-reliant.

The other financial gain, viz., the fact that the profit is distributed among the working members, is an incidental advantage, in itself of great value. The Government gave 16 coupes for working to such co-operative societies in the year 1947-48 and the number of coupes so given out increased to 31 in 1948-49. The coupes are given out to these societies at upset prices and, in addition, other concessions are also given to these societies. Inevitably, at the present level of ignorance of the Adivasis, these societies had to be sponsored by responsible social service agencies. But with experience and training, it is hoped that the day will not be far off when the societies will be able to look after their own affairs unaided even by such disinterested friends.

BENEFACTANT LEGISLATION

Some of the problems of the Backward Classes arise chiefly from their poverty and from the fact that they belong to the dispossessed sections of society. The general economic and social programme of the Government in the interests of the dispossessed classes benefits the Backward Classes no less than other sections. Legislation, such as the Tenancy and

Agricultural Lands Act, the Moneylenders Act, the Agricultural Debtors' Relief Act, etc., which is designed to benefit the underdog also benefits the underdog from the Backward Classes. Knowledge of such legislation and ability to take proper advantage of it are no doubt essential. These conditions are increasingly secured through propaganda by officials of the Government in the Revenue and Backward Class Departments as well as by voluntary agencies which are eligible for grants under approved rules on the basis of certain proportions of expenditure incurred by them on approved items.

Organisations such as the Bhil Seva Mandal, Dohad, the Bhil Seva Mandal, Nandurbar (W.K.), the Adivasi Seva Mandal, Thana, the Dang Seva Mandal, Nasik and the various Provincial Harijan Sevak Sanghs are given grants-in-aid under this scheme. An amount of Rs. 16,200 was given as grants to recognised voluntary agencies during the year ending March 31, 1949.

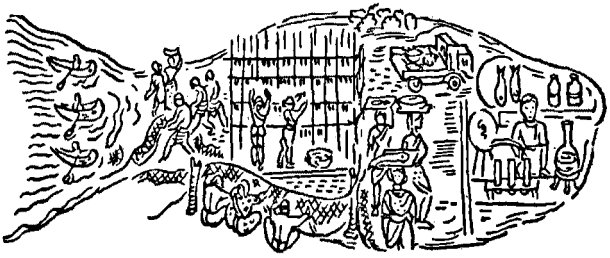
PROBLEMS OF HOUSING AND WATER SUPPLY

Two other problems of considerable importance to the Backward Classes relate to housing and supply of potable water. With regard to housing in urban areas, municipalities are encouraged to undertake slum clearance schemes with promise of liberal grants-in-aid. Municipalities and local bodies are also encouraged to build suitable houses for their sanitation staff under a scheme of grant-in-aid.

In addition, there is a P.W.R. scheme providing for housing improvements for the Backward Classes under which the housing conditions of the Backward Classes are sought to be improved wherever possible through the formation of co-operative housing societies which are given free land and interest-free loans. Where the formation of co-operative housing societies is not practicable, similar concessions are given to the Backward Classes on an individual basis. With regard to water, all public sources of water are open to all,

without distinction of caste or creed. In addition, under the Village Water Supply Scheme, the Government has agreed to provide one public well for every village or hamlet with a population of 100 or more.





FISHING INDUSTRY IN BOMBAY PROVINCE

Programme of All Round Development

INSUFFICIENCY of supplies of fish would appear to be almost chronic in Bombay, as unforeseen factors constantly arise to widen the gulf between demand and supply. The foremost objective of the Fisheries Department of the Government of Bombay is, therefore, to overcome the present shortage of fish, which began to play an increasing part in the people's diet. Maintenance of constant and adequate supplies of fish depends on a number of problems, which must be surmounted before the demand for it can be properly satisfied. Capture of more fish would seem to be the least important aspect of the trade, when this problem is viewed in its proper perspective. Catches cannot be augmented in the absence of proper berths for fishing villages. Likewise, approaches to and from fishing villages have to be cleared of siltage and submerged rocks, if vessels must perform the maximum number of trips they are capable of performing.

Further, landing facilities need greatly to be improved, for if the catches are not expeditiously cleared and moved to the retail markets, they are practically useless both to fishermen and consumers. Equally important is the provision of up-to-date marketing facilities and methods, so that fish is properly laid down for the consumer to inspect. As it is, much fish is now needlessly damaged by retailers' frequent handling of it before it is finally sold.

COLD STORAGE FACILITIES

The importance of refrigeration has not yet properly been realised by our fish trade. To these and kindred problems the Department has addressed its attention in the conviction that the benefits which will flow from their solution will be enjoyed by the humblest of fishermen.

No real progress is attainable without the fishermen's realisation of the importance of their industry and the vital role they themselves must play in it. Their enlightenment and their economic betterment are the pivotal points on which hinges the future development of the trade.

The Government's policy has, therefore, been to make the fishermen occupy an increasingly important part in the conduct of this business, so that they may gradually become independent of extraneous help and outside agencies.

Here are some of the measures which have already been adopted to secure the aforesaid objective.

FISH CARRIER LAUNCHES

Fourteen years have now elapsed since the development of fisheries was taken in hand in the Province. The preliminary object at the time was to demonstrate to the fishermen the advantages of the use of power-propelled craft for the transport of fish from the fishing fields along the coast to Bombay City. The results achieved exceeded all expectations and the number of launches today is 54, (representing a capital investment of Rs. 35,00,000). These vessels bring to Bombay fish from Daman, Div and Jamnagar, Okha,

Mangrol and the Makran coast in the north and Bhatkal in the south. Steady increase of catch has been recorded by the launches as may be seen from the following figures.

Year	Catch
1943-44	1,154,063 lbs.
1944-45	1,217,860 „
1945-46	3,004,341 „
1946-47	3,086,425 „
1947-48 over	3,500,000 „
1948-49	6,300,000 „

The chief complaint in the past few years has been the shortage of fish, and the Department has devoted much attention to this problem. Although no detailed statistics exist to indicate the precise increase, it cannot be gainsaid that an appreciable increase has occurred during the last 10 years. Statistics show that the quantity of fish brought to Bombay City in 1942-43 was 10,000 tons, whereas in 1947-48 it was 22,390 tons and in 1948-49, it was about 29,000 tons in the Municipal markets. The Bombay Municipal Commissioner observed: "Considerable quantities of fish were sold in private markets of which even a rough estimate cannot be formed in the absence of any record".

Similarly, the output of cured fish today totals over 3,75,000 mds. and 1,02,000 mds. of salt compared with 2,40,000 mds. of fish and 70,000 mds. of salt in the pre-war years.

DEEP-SEA FISHING

The problem of increased catches is now being tackled in this Province by the Government of India, private parties and the Provincial Government.

The Government of India have set up a Deep-sea Fishing Station in Bombay and have purchased a trawler named "Meena", which is fitted out with modern equipment and staffed by experts from England. It commenced operations in February, 1948. During 1948-49, the trawler landed 2,24,000 lbs. of fish.

The motor launch, "Tapase", was specially built by the Government of Bombay to catch fish and to demonstrate to the fishermen its potentialities for this purpose. The total quantity of fish landed by the vessel during the last two years was about 2,92,000 lbs. This figure is not as impressive as one would expect, but the vessel has clearly shown to the fishermen that power vessels are superior to sailing boats for the capture of fish. There seems to be little doubt that a promising future exists for the use of power vessels in our waters.

POWER VESSELS IN OPERATION

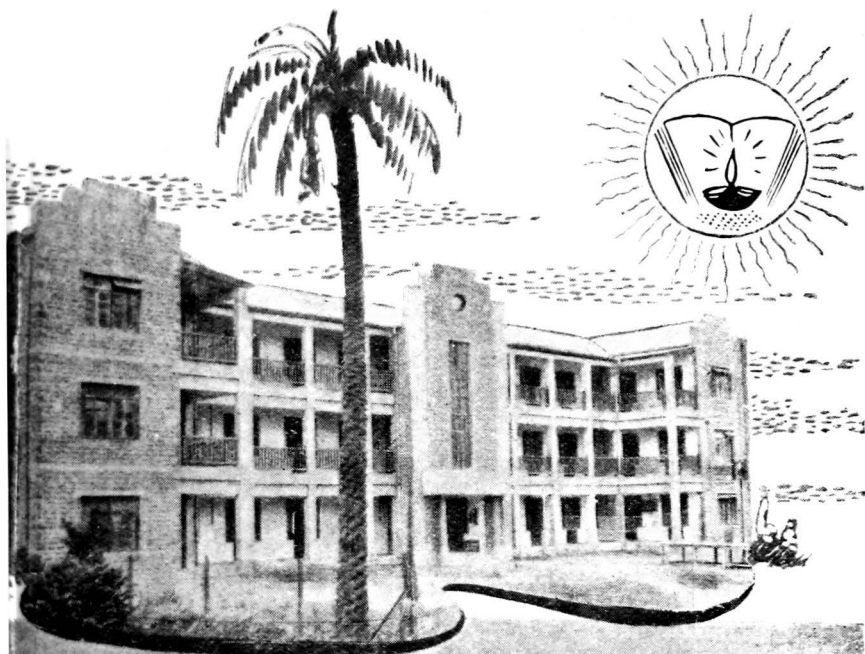
Already the use of power vessels for the capture of fish is gaining popularity. Recently, Messrs. Kenico Ltd., who have their headquarters in Bombay, purchased a vessel from the Ahmadi Ship-building Yard and adapted it for use as a trawler. The vessel, skippered by an Englishman, is operating off the Bombay and Kathiawar coasts, where it is using small trawls for its experiments.

A craft, "Jalprashad", to meet the special conditions of our coast, is in operation off Satpati near Palghar, where it is based. The vessel which was built by local carpenters is owned by P. V. Meher and brothers, a joint family of fishermen. The vessel is 50 feet in length and is equipped with an 80 B.H.P. General Motors engine. A feature of the vessel is that like the "Tapase", it employs indigenous fishing nets for the capture of fish. The quantity of fish caught by the vessel in a period of five months was 16,000 lbs.

GOVERNMENT AID PROFFERED

Potentialities of the use of power vessels have appealed to our fishermen, who have sought financial aid from the Government to enable them to equip their boats with engines.

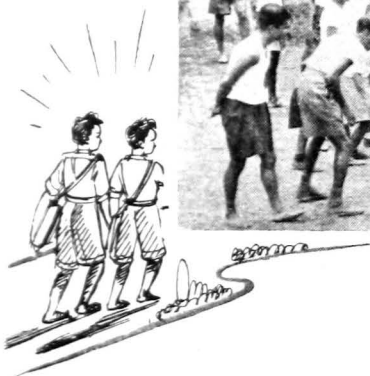
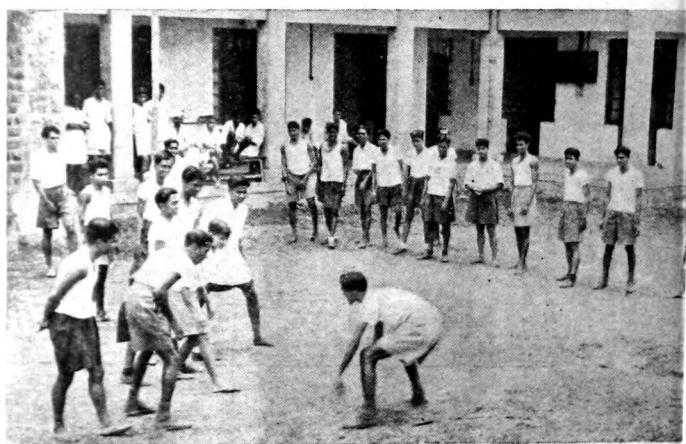
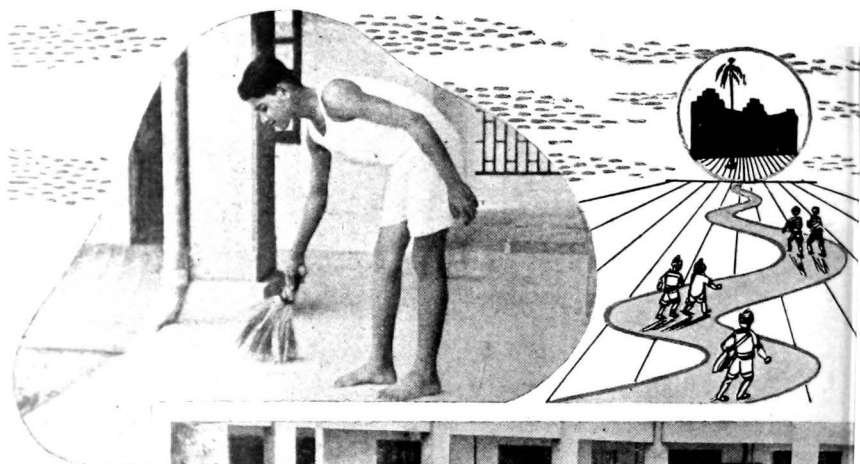
(i) Loans amounting to Rs. 12,000 each were sanctioned to Mr. P. Y. Killekar, a fisherman of Kolaba, and Mr. C. G. Khobrekar, a fisherman of Deogad, for the purchase of Gardner marine engines (24 B.H.P. each), specially imported from



BACKWARD CLASSES

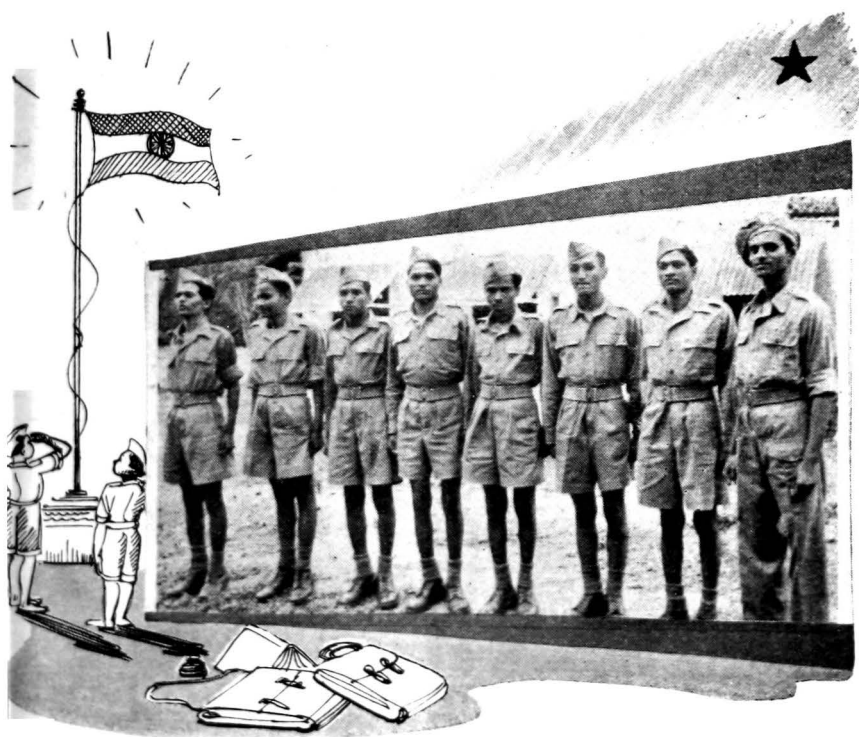
A PROMINENT PLACE in the Government's social amelioration activities must be accorded to that in respect of the Backward Classes. These latter have received full attention during the period under review—October, 1947 to March 1949—and especially, the educational programme has been notable for the construction of a Government Backward Class Hostel at Poona (seen above), scholarships, stipends, free-studentships and, last but not least, the policy of allocating forest coupes to Adiwasis' co-operative societies and of starting primary schools in the Adiwasi areas of the Province.



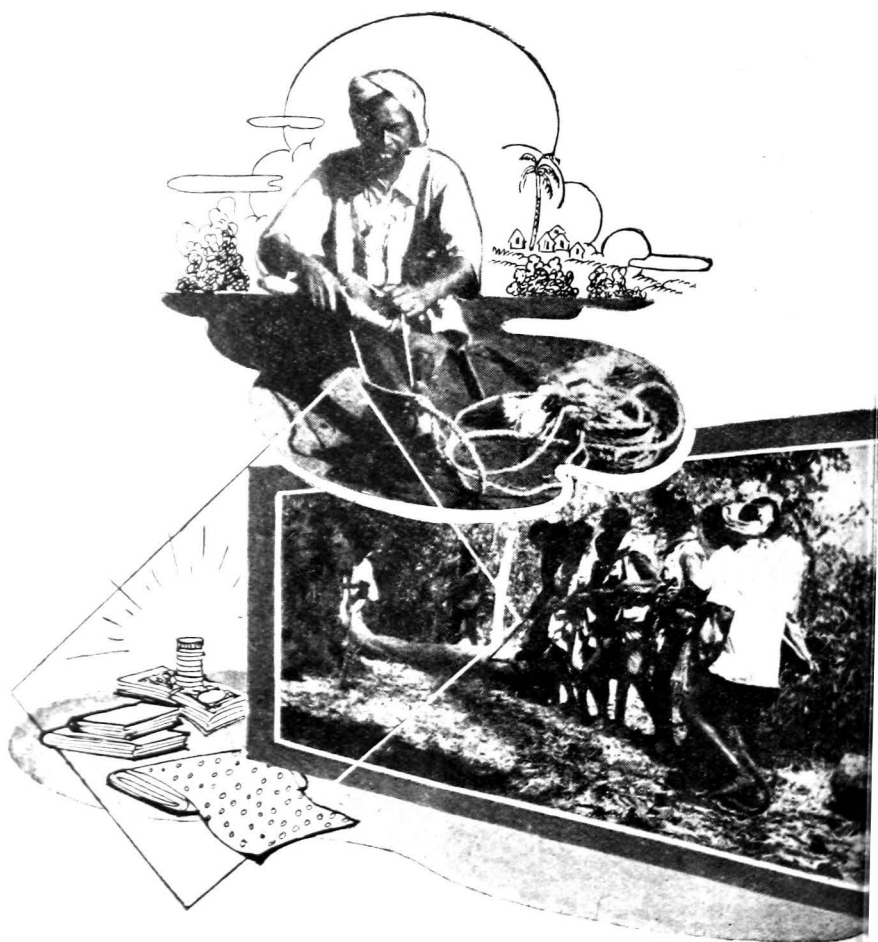


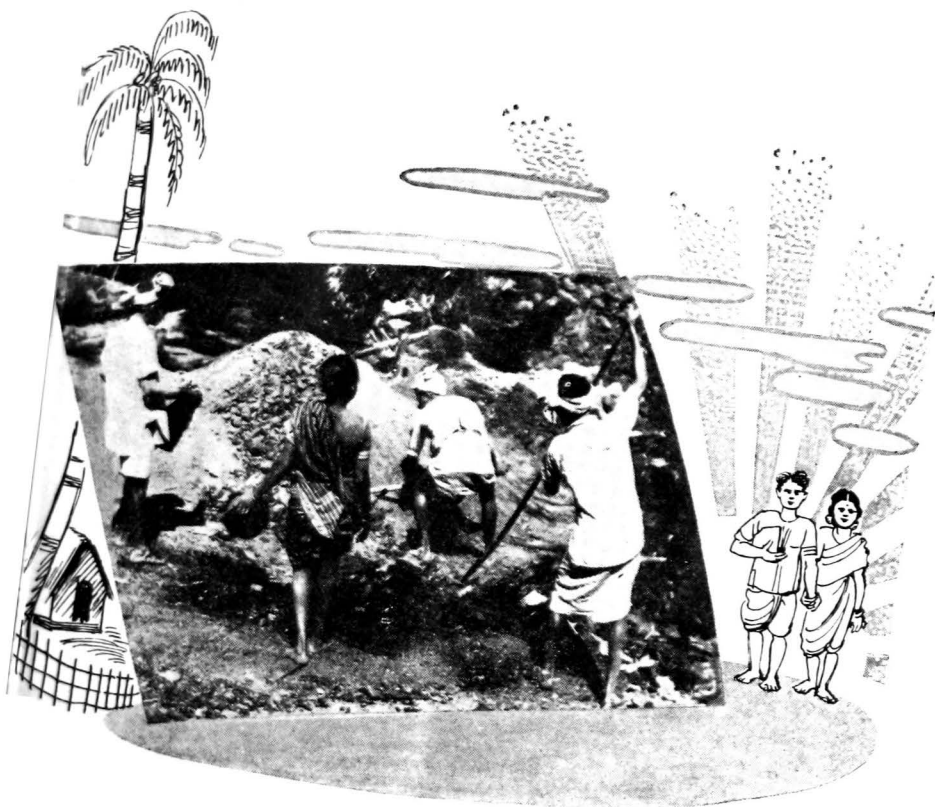
SELF-HELP is the keynote of activity at the Backward Class Hostel at Poona. The inmates wash their own clothes, clean their dishes, and sweep the floors. Games, which are played regularly, help them build up strong healthy bodies in accordance with the old adage, a healthy mind in a healthy body.

*THE NATIONAL CADET CORPS
and its ideology have made a
profound appeal to Backward
Class boys as they have to other
sections of the population in
Bombay Province. Here is a group
of them snapped at one of their
parades in Poona.*

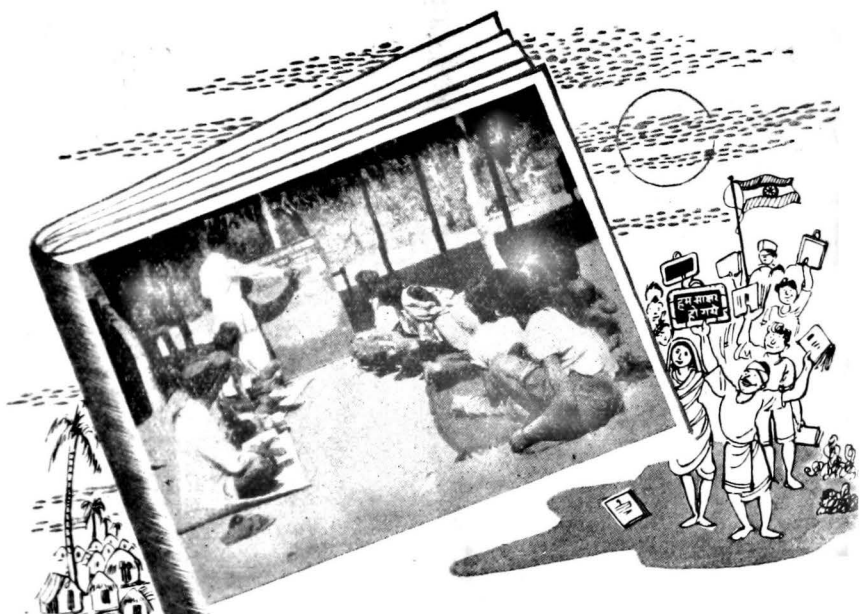


THE ADIWASIS have been acknowledged as pillars of democracy in the Republic of India. The Government of Bombay has launched a comprehensive programme designed to achieve all-round amelioration of these backward people who are hard-working, honest and peace-loving. Their main occupation is cutting down trees, hewing logs and charcoal-making. In their periods of enforced leisure during off-season, they engage themselves in a number of subsidiary occupations, such as rope-making. Wood-hewing is an attractive operation to watch. To the rhythm of a native ditty, these jungle workers pull along a trunk of a tree felled by them. They have developed their own peculiarly charming folk music which may be heard at such times or in the gathering darkness of a quiet evening when they foregather outside their huts or on the village common.





EXTREMELY HARD-WORKING
are these Adiwasi women. They
share the labours of the day
equally with their menfolk and
assist them in recovering char-
coal from a kiln set up and
worked by them, as in this
picture.



LITERACY AND WORK now go hand in hand with them. Here is a social education class imparting literacy to a group of Adiwasi children and men at Maswan in the Thana District. The class is being conducted by the Maswan Adiwasi Labour Co-operative Sangh, which is doing commendable work among these jungle folks.



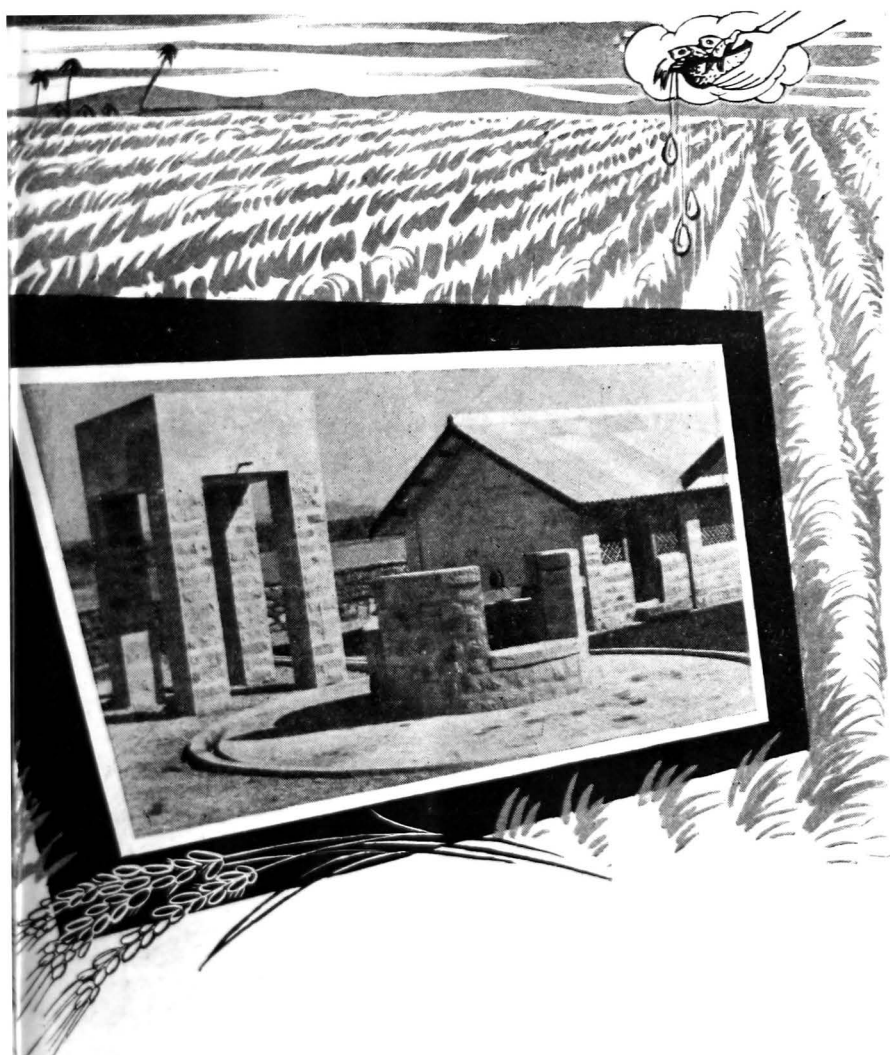
FISHERIES

FISHERIES form an important activity of coast-dwellers in Bombay Province. Of late, fish has come to occupy an increasingly important place in the people's dietary. Fisheries research and development have endeavoured to keep pace with the growing demand for fish and fish products. The Department of Fisheries has done much to assist this and offered help in the form of loans, scholarships, and advice to fisherfolk. Here is a fine type of fisherman, robust, hard-working and looking with hope and expectation to the future which has been assured for him as a progressive and happy member of society.



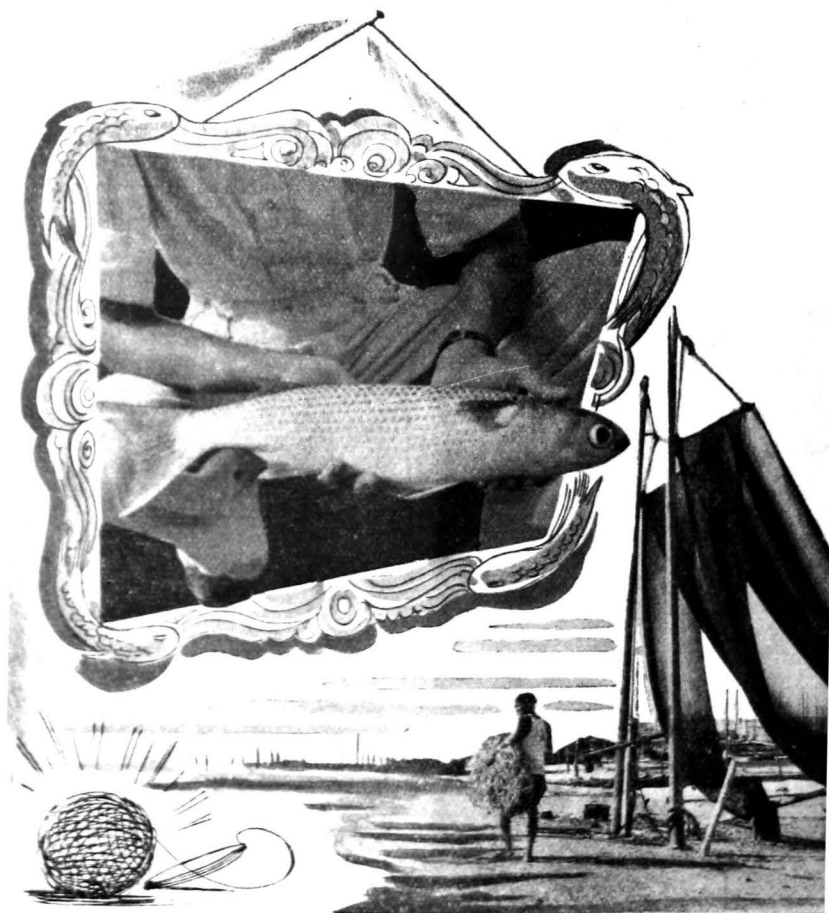


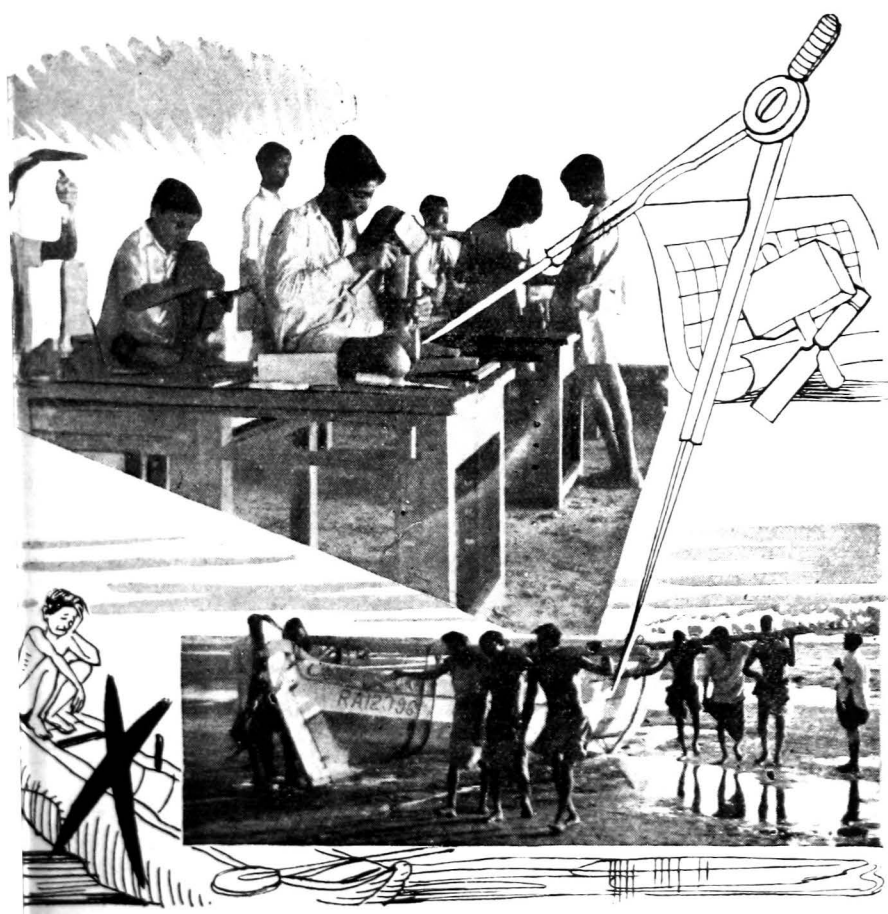
A DREAM come true. Old fish curing yards which were clumsy, ramshackle affairs (bottom) are fast yielding place to cement concrete structures (top).



THE SHED at right is a stone structure with a cement concrete floor for curing fish. The well in the foreground provides the water which is pumped into the reservoir (left, background) by a manually operated pump from where it is conducted by pipe to the shed. The water after washing fish, if let into the fields, enriches the soil.

PISCICULTURE, like cattle-breeding, horse-breeding and poultry-farming, is of great importance, having acquired the status of an occupational art. It has not so far been practised on an extensive scale in our country, but the splendid specimen (seen below) of a mullet shows what can be done in fish culture under controlled conditions.





NO MORE TEARS now for our sons of the sea. The Fisheries Schools teach them all facets of their calling, including the principles and practice of boat-building, repairing, etc. These Schools are proving increasingly popular with our fisher-boys and consequently there are abler and better-trained fishermen manning our fishing fleet.



BIGGER CATCH, bigger profits, says the Bombay Province fisherman. As a result of using better nets and better craft, the average catch has improved in recent years, bringing increased prosperity to him. Above is a familiar scene along our coast, a goodly catch having been landed.



HARDLY has there been a problem which has taxed the energies of the Government more or presented a greater or more compelling challenge to it than the rehabilitation of displaced persons. The Government of Bombay has tackled it vigorously with all the resources that it could command. There are about 5 lakh displaced persons in the Province of whom over 1½ lakhs are residing in former military camps, now being replanned into new residential townships and colonies. About 50,000 have been resettled in new houses built at various places in the Province. Unattached destitutes, numbering about 10,000 people, are being given free accommodation and rations.

The aim of the Government has been to make these persons self-reliant and self-supporting as soon as possible. Accordingly, numerous schemes, including the setting up of vocational training and work centres and agricultural colonisation, have been adopted. Financial assistance for rehabilitation has been given on a considerable scale. Schools, dispensaries, shops, etc., have been established at many centres.



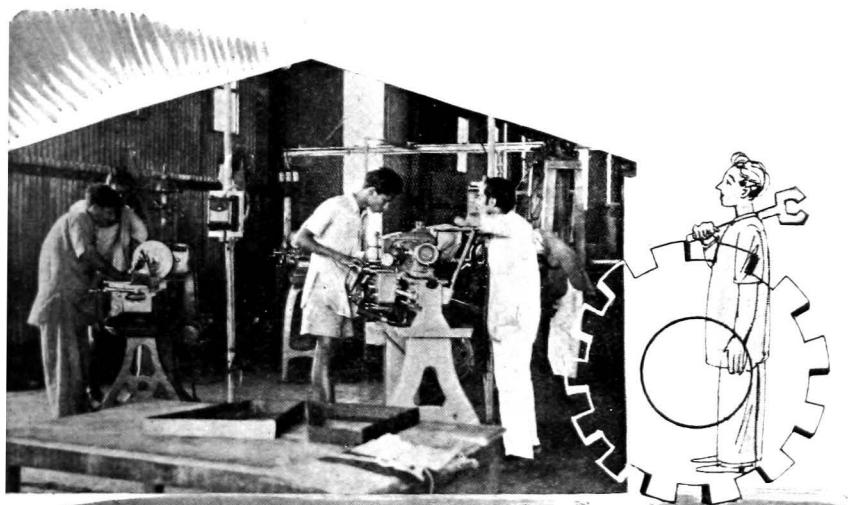


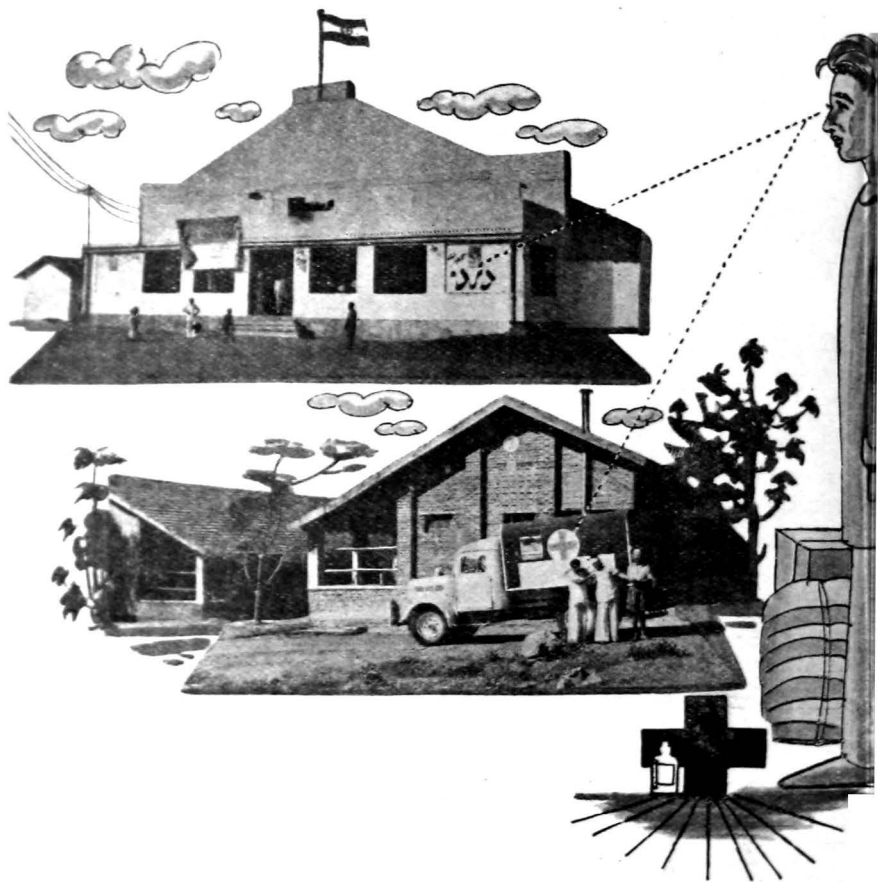
**A VIEW of the Mani Bazaar at
Camp No. 8 at Kalyan, a Bom-
bay suburb (top).**

**Children of the English High
School doing physical exercises
outside the barracks which serve
as school building (bottom).**

INSIDE the mechanical engineering section of the Vocational Training Centre at the Kalyan Relief Camp. Here the engineering-minded youth find full scope for developing their aptitudes. (Top picture).

And the women and girls, too, are looked after in this matter. The picture at bottom shows some of them learning weaving in the weaving section at the Training Centre.





PERHAPS displaced persons need entertainment and medical aid more than other sections of the population, and for very good psychological reasons, too. They forget their trials and tribulations while enjoying a good talkie at the Regal Cinema (top) and when they are ill or in need of medical attention, they go to the Central Hospital (bottom) where indoor patients are treated.

England. These engines will be fitted into hulls constructed by them and the vessels will be used for fishing.

(ii) The Satpati Fishermen's Co-operative Consumers' Society's application for allotment of two Ruston marine engines on a subsidy-cum-loan basis has been approved by the Government.

(iii) Mr. S. V. Nakhwa's application for allotment of two Ruston marine engines for installation in a vessel purchased by him from the Navy is under the consideration of the Government.

IMPROVED DESIGNS OF SAILING CRAFT

Two improved types of craft, equipped with 22½ Horse Power engines, were built by the Department, each at a cost of Rs. 27,000. They have been sold to fishermen's co-operative societies at Satpati (near Palghar) and Ankola (Kanara District). The terms of allotment are that half of the amount of the cost of construction is to be treated as subsidy and the remainder as loan. The operation of the Satpati vessel during a single month has been most satisfactory, as it landed in 11 voyages in April, 1948 about 8,668 lbs. of prime quality fish. The results obtained by the vessel encourage the view that the future of the industry lies in the employment of a large number of such vessels along our coast.

Accordingly, the Government purchased four Ruston and two Gardner engines, which have been allotted to fishermen and fishermen's co-operative societies along the coast. Provision of these engines is merely a beginning, as the Government is prepared to make available as many engines as are desired by the fishermen for the development of their industry.

FISH CURING YARDS

Fish curing establishments are an essential feature of almost all the more important active fishing centres on our coast. These establishments play a valuable role in the eco-

onomy of fishing villages, for, apart from retaining in the fish trade a large number of fishermen who might otherwise have drifted to other pursuits, they are also the means of making available valuable supplies of fish products in the hinterland, where no fresh fish reach.

Thus, the value of fish curing establishments is unquestioned, for they provide, in a large measure, the food of the poor and help them to have a varied diet. Under the scheme for the improvement of curing facilities, a sum of Rs. 8,45,950 has been set apart for the provision of cement platforms with super-structures which will replace the mud floors and thatched sheds used heretofore. The entire programme of work scheduled for completion in the Kanara District has been taken in hand and will be completed shortly.

COLD STORAGE FACILITIES

Our climatic conditions constitute an adverse factor which confronts our fishing industry. The present limited catches and the increasing demand for fish alike have emphasised the paramount need for the preservation of fish. The Department has helped in the expansion of cold storage facilities and afforded assistance to owners of ice factories to obtain, at controlled rates, bricks, cement, galvanised piping, iron sheets and steel plates. Owners were also recommended for the grant of licences to import machinery. The cumulative result of the multiplication of ice factories has been to remove completely the difficulties experienced by fishermen in obtaining ice. Ready availability of large quantities of ice will enable the fishermen to increase their earnings, as they will be able to keep their fish fresh for longer periods of time.

Six new such factories have been erected in Bombay. They are:

1. India Fisheries, Ltd., Sassoon Dock, Bombay (20 ton).
2. National Ice & Cold Storage, Arab Lane, Grant Road, Bombay. (15 ton).

3. Andheri Ice & Cold Storage, Andheri, B.B. & C.I. Railway (55 ton).
4. Bassein Ice Factory, Bassein. (10 ton).
5. Chaupatty Ice & Cold Storage, Babulnath Road, Chaupatty. (20 ton).
6. Bassein Ice Supply Co., Bassein. (4½ ton).

The following are being erected :

1. Bassein Ice Factory, Santa Cruz, 10 ton ice plant with cold storage, specially indented by the Department.
2. Agiasingh Tarochansingh, Lalbaug, Bombay. 25 ton ice plant with cold storage.
3. Jamuna Ice & Cold Storage, Kurla, (B.S.D.). 10 ton with cold storage.
4. P. M. Mistry & Co., Worli, Bombay. 25 ton with cold storage.
5. Government of India's Ice & Cold Storage Plant. 20 ton ice plant with 600 ton cold storage.
6. Shamdas Mehta & Co., Worli, Bombay. 18 ton ice plant with cold storage.
7. Amrit Ice & Cold Storage, Surat.
8. Coastal Ice Factory, Ratnagiri (5 ton).

Extensions were effected in the case of three factories, viz.

1. Bombay Coastal Refrigeration Co., Ltd., Sassoon Dock, Bombay (15 ton).
2. Siddley Ice Factory, Tardeo, Bombay (30 ton), and
3. Palghar Ice Factory, Palghar. (25 ton).

INCREASED ICE OUTPUT

The output of ice has increased gradually in the past few years, it being today over 700 tons, compared with 300 tons during the war. Indications are that the production of ice will expand further as a result of several new factories and

extensions to existing ones that are under contemplation by enterprising business men.

The Department has also under its active consideration the establishment of an ice plant at Satpati on behalf of a fishermen's consumers' co-operative society there. An application from the society for the allotment of a 5.25 ton ice and 31.5 ton cold storage plant on a subsidy-cum-loan basis is under the Government's consideration.

The Department has also submitted a proposal for the establishment of 5.25 ton ice and 31.5 ton cold storage plant at Karwar and to run it departmentally.

LOANS AND SUBSIDIES PROVIDED

Another means to promote the advancement of the fishing community is to make available to the fishermen financial assistance and the Government has been most liberal in this respect. The general increase in the supplies of fish to Bombay City can be ascribed to the liberal policy adopted by the Government in the grant of loans to fishermen for the purchase of equipment, such as boats, nets and stakes. The loans are advanced against security of boats and nets already owned by the fishermen and the assets purchased from the loan amounts.

The total amount of loans disbursed during the two years ended March 31, 1949, is as follows:

1947-48	Rs. 1,00,442
1948-49	Rs. 2,89,234

GRANTS AND SUBSIDIES

Subsidies amounting to Rs. 44,848 were also granted during the period under review. Out of this amount, Rs. 27,000 were awarded to the fishermen's co-operative associations at Satpati and Keni, to which two improved types of fishing craft, each valued at Rs. 27,000, were allotted on the basis of 50 per cent subsidy and 50 per cent loan.

A further grant of Rs. 1,533 was extended to two fishermen of Karanja, who had lost their boats and nets at the time of the "Ramdas" tragedy. Relief amounting to Rs. 3,265 was also granted to distressed fishermen who had lost the wherewithal of their trade in storms which are not uncommon on our coast.

EDUCATION OF FISHER-BOYS

(a) Fisheries Schools

The question of the education of fishermen's children has been kept in the forefront of the Government's schemes. The establishment of fisheries schools is an accepted policy with it and steps are being taken to provide fisheries schools at centres where they will play a useful role and be taken advantage of on a large scale by children of the fishing community. The cost of new schools is estimated at Rs. 1,20,000. There are 10 schools in existence today.

(b) Foreign Technical Training

Two students, with B.Sc. degrees from the fishermen's community, have been sent to America for training in technological research. A sum of Rs. 30,000 for this purpose is included in the estimates for 1948-49.

(c) Training as Mechanics and Captains of Fishing Vessels:—

The skill shown by fisher-youths in learning to operate power-propelled vessels indicates their aptitude for mechanical trade. The number of youths that have so far qualified to operate launches is encouraging and the Government has offered further opportunities for training fisher-youths as captains of power-propelled vessels. These schemes have been introduced so that when fishermen decide to go in for power vessels they may operate them on a self-contained basis, recruiting captains and mechanics from their own community.

FISHERIES SCHOOLS AT WORK

The Fisheries School at Karwar is the first fisheries school established by the Department. The school started with 65

pupils on its roll. This number has now risen to 200, of which 40 are girls. The School has seven classes from Standards I to VII and is in charge of a headmaster, who is a graduate in Zoology. The Superintendent of Fisheries (Coast), Karwar, who holds a degree in teaching (B.T.), also supervises the working of the School.

Besides theoretical training, practical lessons in fisheries are provided by arranging visits to fish curing yards and excursions on power launches for observing actual fishing operations. Often, demonstrations of improved methods of extracting shark liver oil are arranged by the headmaster.

Practical lessons in carpentry and net-making are given by the Workshop Superintendent. Emphasis is laid on training in carpentry, so that the students are enabled to repair their own boats.

Provision of mid-day meals to students is a special feature of this School. This facility is looked upon as a boon both by the fisher-children and their parents. The menu has been drawn up in consultation with the Nutrition Expert to the Government of Bombay, so as to ensure the desired standard of nutrition. Shark liver oil is also administered along with Klim milk powder to make up vitamin deficiencies, if any.

SPIRIT OF CO-OPERATION

Improvement of the socio-economic condition of fishermen continued to engage the active attention of the Department during the period under review. Public interest in the subject was quickened by the increasing attention paid by the Fisheries Minister to the betterment of the economic condition of fishermen, as this constituted the main basis on which improvement of the fishermen's lot could be secured.

Efforts were, accordingly, focussed on the formation of co-operative societies among fishermen. Intensive propaganda was conducted by the Department, which had in its work the active encouragement, valuable experience and advice of the Collectors of various districts as well as of Co-operative

Officers there. Villages within easy reach of Bombay were visited by the Director of Fisheries, who addressed fishermen there on the benefits of co-operative endeavour among themselves. Co-operative societies at Uttan, Dativre, Kosamba (Bulsar), Paj and Vengurla were inaugurated by the Director of Fisheries.

Many meetings of fishermen in the Ratnagiri and Kanara Districts were addressed by the Superintendent of Fisheries (Coast), Karwar, and the District Officer for Village Industries and Industrial Co-operatives, Karwar, who explained to the fishermen the advantages of their business when conducted on the co-operative basis. The idea of co-operative societies appealed to a number of fishermen, with the result that during the last two years, the number of co-operative societies has reached the decent figure of 35, of which two are in Bombay City, four in the Bombay Suburban District, seven in the Thana District, one in the Kolaba District, seven in the Ratnagiri and nine in the Kanara Districts. Most of the societies are conducting foodgrain and cloth rationing shops and stock yarn, twine, coal tar, coir rope, fishing hooks and other accessories for sale to members at reasonable prices.

MOTOR LAUNCHES PURCHASED

Binga Fishermen's Co-operative Association, Binga, District Kanara, has purchased two motor launches with financial aid to the extent of Rs. 77,000 rendered to it by the Government in the shape of a loan of Rs. 54,000 and a subsidy of Rs. 23,000. The launches are used by the Association for the transport of fish from Binga and Karwar to Bombay for sale in the Bombay market. Thus, for the first time, fishermen in the Kanara District have become launch-owners and have been enabled to retain the benefit of higher prices realised in Bombay for themselves, which formerly went to middlemen.

With a view to encouraging the formation of co-operative societies, the Government has laid down that subsidies will be awarded only to co-operative societies for establishment

of ice and cold storage plant and for acquiring improved types of fishing craft.

Besides these schemes, applications from individual societies for acquisition of trucks and motor launches for transport of fish on a subsidy-cum-loan basis are considered by the Government.

IMPORTANCE OF RESEARCH

The master-key to progress in fisheries, as in all other industries, is research. Without it, not much headway is possible. Then, there is the fear that such progress as has been achieved may be undone if research is neglected. Research is vital to the development of our fisheries. The Government has set up a Technological Laboratory at a cost of Rs. 1,00,000 at the Sassoon Dock, Bombay for investigation of problems relating to the fishing industry. The Laboratory at the Sassoon Dock is being expanded by the addition of a two-storied structure to house a deodorising and shark liver oil encapsulating plant. The shark liver oil industry has come to stay. The estimated value of the out-put of neat liver oil in the Province is estimated at a lakh of rupees.

The Department has also successfully put on the market fish glue, gelatine and fish meal. All these products are now being manufactured on a commercial scale.

MARINE BIOLOGICAL RESEARCH

The absence of an aquarium with adequate facilities for research has been one of the major drawbacks in the study of marine biology in this Province. This omission will now be made good through the munificence of the late Mr. and Mrs. Vicaji D. B. Taraporevala, who generously donated a sum of Rs. 2,00,000 to the Government of Bombay for the establishment of an aquarium. The Government accepted the donation, and allotted gratis a commanding plot of land for it on the Marine Drive, Bombay.

A feature of this aquarium will be that the exhibits will include both fresh water and marine forms found along the coast of our Province. In addition, the aquarium will have facilities for marine biological research and investigation. These facilities will be placed at the disposal of students of our Province as well as investigators from other provinces.

The aforesaid scheme has been included in the first five-year plan of post-war development as scheme No. 154, and has been granted the first priority. The building is nearing completion and it is expected that the aquarium, with all inside fittings complete, will be ready shortly.

A Marine Biological Research Station at Ratnagiri is also being established.

Investigation of landing and marketing facilities has also engaged the Department's earnest attention. Landing facilities are being provided by the Bombay Port Trust at a cost of Rs. 2,00,000 and a new up-to-date market is being provided by the Bombay Municipality in place of the old Crawford Market, at a cost of several lakhs of rupees.





REHABILITATION OF DISPLACED PERSONS

A Stupendous Problem

THE dawn of Indian Independence brought many difficulties in its train, not the least intricate of which was that of the resettlement of millions of persons who had to flee to this dominion from the terror which laid waste countless hearths and homes and jeopardised and destroyed a great many lives, and resulted in incalculable loss of property.

Arrangements for the reception of persons from Pakistan were made by the Bombay Government in the very beginning, i.e., as and when displaced persons arrived after the Partition of the country. This Government was also responsible for their dispersal and other cognate matters. The Relief Camps remained under the control of the Bombay Government upto February 1948, when they were taken over by the Government of India. That Government then retransferred their control to this Government on 14th June, 1948. The Directorate

of Relief and Rehabilitation was created with effect from 9th June, 1948, with a view to dealing with the refugee problem and the day-to-day administration at the executive level with efficiency and expedition. The Directorate started functioning initially with the Deputy Secretary to Government, Relief and Rehabilitation Department, as ex-officio Director of Rehabilitation but from 6th August, 1948, Major-General J. K. Bhonsle, one of the leading personalities of the I.N.A., took over charge as Director of Rehabilitation.

Immediately things got moving. A Supply Branch was started under the Directorate to deal with matters relating to camps, barracks, movements of displaced persons, supply of food, clothing, etc., and a Recreation Branch was set up to provide adequate facilities for recreation of mind and body so essential in the circumstances in which the people had been placed.

SUDDEN INFLUX

Till the beginning of 1949, not much had been done to rehabilitate the hundreds of thousands of displaced persons who had arrived in this Province and who came pouring in almost by every ship and train from Western Pakistan. The problem which confronted the Government was to make immediate arrangements for their food and shelter before launching upon any schemes calculated to find reasonably secure and gainful occupations for them. At present, about 2 lakhs of displaced persons are staying in various relief camps spread over the districts of Thana, Poona, Ahmednagar, Nasik, Ahmedabad and Kolhapur. There are also two camps in Greater Bombay. All destitute displaced persons have been given free accommodation and rations from the very beginning.

It was, however, realised that such temporary relief touched only the fringe of the problem and that, to solve it basically and effectively in the interest of the displaced persons themselves as well as in the larger interest of the country as a whole, it was necessary to create a psychological atmos-

phere which would make it difficult, if not impossible, for the displaced persons to live on Government doles alone. The Government, therefore, decided to stop gratuitous relief in the matter of food to all displaced persons at the earliest possible moment. Relief was to be on a graduated and gradually declining scale related to the income of a family as follows:—

<i>Gross Income of Family</i>	<i>No. of Adult Mem- bers Not Entitled to Gratuitous Relief</i>
Under Rs. 55 per mensem	Nil
Between Rs. 59 and Rs. 69 per mensem	2
Between Rs. 70 and Rs. 79 per mensem	3
Between Rs. 80 and Rs. 89 per mensem	4
Between Rs. 90 and Rs. 99 per mensem	5

Gratuitous relief is to be discontinued altogether from 17th October, 1949. Displaced persons will, thereafter, subject to certain exceptions, be on a par with other citizens of the Province. Until then, destitute displaced persons will be given free cereal rations together with Rs. 8 per month per head in lieu of other articles, the cash payment diminishing by Re. 1 after every four weeks and stopping entirely at the end of 20 weeks. The process of gradual liquidation of gratuitous relief, however, is not applicable to unattached women and children and to the aged and the infirm.

THE REHABILITATION SCHEME

With a view to expediting schemes for the rehabilitation of displaced persons, the Government has decided to make loans available to them for the purpose of trade or business as well as for the construction of houses. The separate Central Rehabilitation Finance Administration grants loans exceeding Rs. 5,000 in order to enable displaced persons to start small- or medium-scale industries. Under the Provincial scheme, loans upto Rs. 5,000 are also granted to individuals to enable them to set up in business in a small way and earn their own living. For this purpose, Rs. 22,56,650 have already been spent, while Rs. 1,92,415, have been disbursed in the shape of educational loans and interim relief to displaced students.

Apart from this, individual loans upto Rs. 1,000 are made available to displaced persons from the fund which was created with earnings from a variety show some months ago. These small loans are designed to enable individuals to buy tools, equipment and raw materials which may be required for various small trades for which they have an aptitude. It may be mentioned here that Rs. 27,500 out of a total of Rs. 50,425/12/- have already been distributed in various camps in and around Bombay to promote the well-being of displaced persons, assist them in setting up in small trades and provide them with facilities for primary education. About 50 co-operative societies have been formed in relief camps all over the Province for various purposes, including housing, producers' and consumers' co-operative societies, co-operative credit societies, etc.

Some time ago, the Government had formulated a scheme for the resettlement of displaced persons on agricultural land at Indoor in the Kanara District. Unfortunately, the response was poor, with the result that the Government was constrained to stop sending any more displaced persons there. It has, however, sanctioned another scheme for the resettlement of displaced persons on agricultural land at Radhanpur in the Banas Kantha District.

SMALL-SCALE INDUSTRIES AND VOCATIONAL TRAINING CENTRES

The Government has started a vocational training centre at the Kalyan Relief Camp with a view to providing training to the largest possible number of displaced persons as a step in the direction of their permanent rehabilitation. Training is imparted in printing, book-binding, painting, soap-making, hosiery, weaving, carpentry, tailoring, confectionery, etc. A grant of Rs. 5,00,000 has already been sanctioned by the Government for the installation of initial equipment, plants, machinery and other accessories. At present about 470 trainees are taking advantage of this scheme, which, incidentally, provides stipends upto a maximum of Rs. 30 per month to those who are not having the benefit of free rations,

and upto Rs. 15 per month to those who are getting free rations.

A controlling committee, consisting of the Director of Rehabilitation, the Honorary Technical Adviser to the Centre, the Administrator, Kalyan Relief Camp, and the Administrative Officer, Vocational Training Centre, Kalyan, has been set up with a view to assisting in and supervising the implementation of the scheme.

When a trainee completes his course, he is given a certificate of proficiency, which would enable him to get employment in a mill or a factory. In addition, about 500 displaced persons are under training in Technical and Vocational Training Centres run by the Ministry of Labour, Government of India.

RECREATIONAL ACTIVITIES

The physical and cultural needs of displaced persons have been duly taken into account. Reading rooms have been opened in a number of camps, where newspapers in various languages are made available. Boy Scout Groups and Girl Guide Companies have been formed and some of them took part in the Provincial Rally of Boy Scouts held in Bombay some time ago.

Regular concerts and *bhagats* are also held in camps. A variety entertainment was organised on a grand scale on 28th January, 1949, in aid of displaced persons from Western Pakistan, when over Rs. 50,000 were collected. The entire cast was composed of Sindhi boys and girls of great artistic promise. Mr. B. G. Kher, Premier of Bombay, presided at the function.

The various camps are provided with radio sets, extra loud speakers and microphones. The former have kept displaced persons in touch with the latest developments in India and abroad, while the latter have been pressed into service for propaganda and publicity and utilised at concerts.

Visual education demonstrations have also been given in various camps and they have been greatly appreciated by displaced persons.

WOMEN'S SECTION

With a view to devoting special attention to the relief and rehabilitation of displaced women, particularly of unattached women and children, a separate Women's Section was started with effect from 29th January, 1949, with Mrs. Mithan Lam as Chairman, assisted by a committee of 10 members, to perform the following functions :

- (a) To look after the administration of Nari Seva Sadan and other women's homes that may be opened from time to time;
- (b) To supervise the training centres specifically opened for displaced women;
- (c) To oversee training schemes financed by the Government but entrusted for execution to non-official bodies or organisations; and
- (d) To formulate plans for rehabilitation, including the provision of work and training.

In order to make a survey of the possibilities of resettling displaced women in occupations best suited to their genius, the Women's Section immediately after it came into being issued a questionnaire to all camps. Efforts have since been made to rehabilitate these displaced women.

The Women's Section has set about in earnest to train women in certain vocations with a view to providing them with gainful occupations. Already, arrangements have been made with some hospitals to admit a particular number of displaced girls to the midwifery and nursing courses. Unfortunately, the response has been poor, largely because many displaced persons have a deep-seated prejudice against these professions.

TRAINING IN DIVERSE ARTS

The Women's Section is also trying to start small cottage industries in some camps. Though they have more or less concentrated on the Nari Seva Sadan at Kurla, considerable work has been done to widen the scope of their activities so as to embrace all camps in the Province.

As embroidery and tailoring are done by Nari Shalas in all camps, the Women's Section buys a number of bales of cloth through the Textile Controller and makes them available to the institutions on a consignment basis. Arrangements with some big shops in Bombay have been made for the sale of goods turned out by the Nari Shalas.

Eight girls from the Nari Seva Sadan at present go to Bombay for receiving training in machine embroidery, knitting sweaters and box-making. In addition to these, one girl is trained in making envelopes, while a boy learns type-writing in Hindi. Each one is given the railway fare and a scholarship of Rs. 15 per mensem. One girl has been sent up for training in nursing. About 80 displaced women are employed in embroidery and sewing classes, while 100 earn wages by making *papads*, etc. A large number are also employed in offices and hospitals in camps.

Recently, an orphanage section has been attached to the Nari Seva Sadan at Kurla, where eight orphans are looked after by a matron, who has been appointed for the purpose.

Plans for putting up new townships at Kalyan, Chembur and other places are well advanced, and will, in all probability, be executed in a short while.



BOMBAY MARCHES ON...

Under the above title, it is proposed to issue a series of booklets containing an account of the work and activities of the Government of Bombay during the period from October 1947 to March 1949.

The series claims, in a strict sense, to be neither an administrative report nor a blue book; it endeavours to convey in a straightforward manner an idea of the attempts of the Government to translate into concrete action its policy and programme.

Some departments are proposed to be grouped together solely for the sake of convenience and it may be added that the order of publication of the booklets that may be followed will not in any way reflect on the measure of importance or the order of priority the Government accords to them.

It will readily be conceded that a truly popular Government must ever be alive to the numerous problems of the people and as such it ought to pay attention to all of them in order to create conditions making for peace, progress and prosperity for all, thus ensuring a full life to rich and poor alike in the Province.

Already published

NO. 1. EDUCATION

NO. 2. CIVIL SUPPLIES

**NO. 3. INDUSTRIES, COTTAGE INDUSTRIES
AND ELECTRIFICATION**

Annas Four Each