

**KENTUCKY: Designs for Her Future**

# KENTUCKY

## Designs for Her Future

Edited by  
Howard W. Beers

Photographic Editor  
W. Brooks Hamilton

UNIVERSITY OF KENTUCKY PRESS

Lexington, Kentucky

1945

*This book is published under a grant from the trust fund  
established by Margaret Voorbies Haggin in memory of  
her husband, James Ben Ali Haggin*

COPYRIGHT, 1945

By

THE UNIVERSITY OF KENTUCKY PRESS

ALL RIGHTS RESERVED



*Kentuckians have a great heritage . . . .*

W. Brooks Hamilton



*Each man views the world in terms of his own experience . . . .*

W. Brooks Hamilton

## FOREWORD

In 1942 Kentucky celebrated its sesquicentennial, and state historians reviewed a colorful, adventurous, and romantic history. Kentuckians were thrilled with pride as they read the stories of the illustrious sons and daughters who had achieved distinction during the century and a half of statehood. A people cannot afford to neglect the past, for it is always a prologue to the future. It was fitting and proper on this significant birthday of the Commonwealth to look at Kentucky in retrospect.

But we are at the end of an epoch. It is essential that we look into the future and attempt to grasp the answers to the problems of tomorrow. Kentucky's true greatness lies ahead. We have vast undeveloped natural resources on which to build the land of tomorrow. We cannot attain the progress we desire unless we have vision to plan, courage to execute, perseverance to achieve the goals we set ourselves. The pattern of our past has been an agrarian economy; if our standards of living and culture are to be raised we shall have to plan for agrarian-industrial development. The character of Kentucky's tercentenary celebration will depend on how well the present generation plans to utilize our reservoir of untouched resources—both human and material.

Confident of the value of a blueprint for Kentucky's tomorrow, we invited a small group of our faculty, representing the fields of agriculture, chemistry, education, economics, geology, history, and sociology to meet for the purpose of discussing Kentucky in prospect. The early conferences of this group were held before post-war planning became so popular in the state and nation. As a result of our deliberations a series of thirty radio addresses over WHAS was given on the possibilities of Kentucky's future. This study of Kentucky by these technically trained research leaders accumulated much valuable information about the state. It was decided that a wider distribution of this information was desirable. We requested Dr. Howard W. Beers, Professor of Rural

Sociology, to assume the editorship of a volume that might have value in charting a course for Kentucky in the world of tomorrow. He invited a number of colleagues in the University to join him in the preparation of *Kentucky: Designs for Her Future*. This book should prove to be of interest to every citizen who has an interest in the future of the Commonwealth.

H. L. DONOVAN,  
*President, University of Kentucky*

Lexington, Kentucky  
July 31, 1944

## ACKNOWLEDGMENTS

Many people helped the authors by contributing information or by reading portions of the manuscript and making important suggestions. A list of them includes: M. B. Holifield, Assistant to the Attorney General of Kentucky, Louisville; J. E. Marks, attorney at law, Lexington; Washington Reed, of the Kentucky Utilities Company and the Committee for Economic Development; several persons in the State Department of Health (Commissioner J. F. Blackerby, Dr. Carl M. Gambill, and Dr. Russell E. Teague), the State Department of Education (Superintendent John Fred Williams), and the State Department of Welfare (Commissioner John Quertermous, Dr. A. M. Lyon, Helen Beauchamp, John Jarvis, Dr. Walter Watson, and Elizabeth Fike); John J. Cronin and Robert I. Kutak of the University of Louisville; Charles F. Isackes, Executive Secretary of the Lexington and Fayette County Community Chest; W. P. King and John Brooker of the Kentucky Education Association; W. A. Duerr, U. S. Forest Service.

Within the University family, the authors' helpers include: A. J. Brown, Thomas P. Cooper, C. S. Crouse, E. N. Fergus, W. P. Garrigus, R. O. Gustafson, E. J. Kinney, Laura Martin, L. E. Meece, S. A. Mory, W. D. Nicholls, Merton Oyler, H. Bruce Price, Margaret Ratliff, J. E. Reeves, Lolo Robinson, J. B. Shannon, J. Allan Smith, Elmer Sulzer, W. S. Taylor, L. A. Vennes, G. H. Wiggin, and Robin Williams. There has been a lively interchange among the authors as each one read and made suggestions on the chapters written by his colleagues.

The following representatives of Kentucky newspapers examined an early outline of the book and made important suggestions: Tom Wallace of the *Louisville Times*, Mark Ethridge and Russell Briney, of the *Courier-Journal*, Fred Wachs, T. W. Rainey, and A. B. Guthrie, of the *Lexington Herald-Leader*.

Two of the charts were prepared for the printer by Mardelle Lehnig. All the others were drawn by J. S. Horine. Secretarial



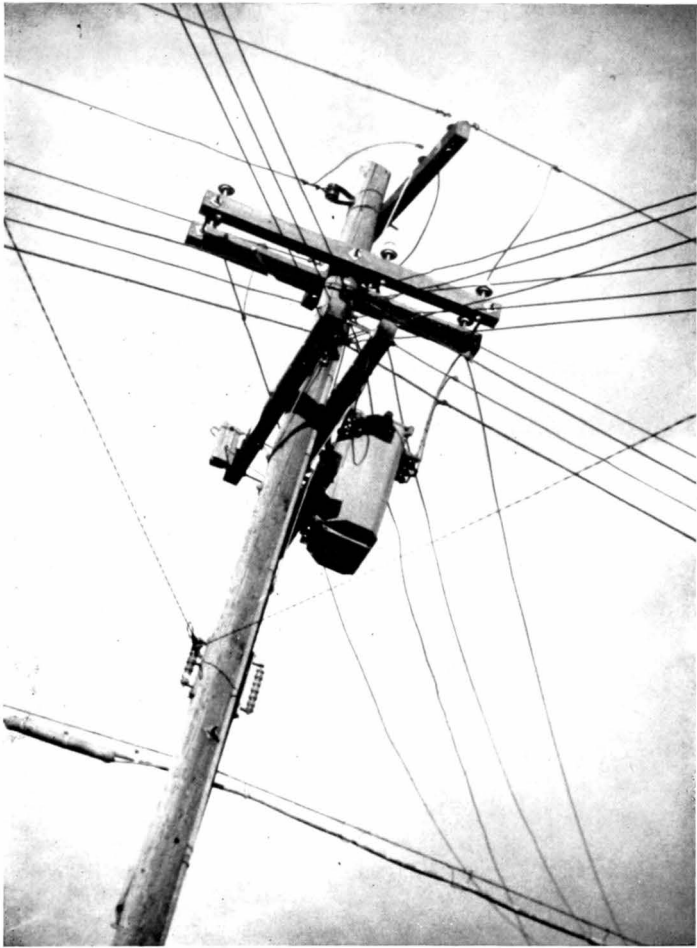
responsibility fell mainly to Ethel Louise Welch and Ethel Marie Byron. Catherine Heflin helped to prepare the index. The photographs, each acknowledged by a credit line, were selected and arranged by W. Brooks Hamilton to be more suggestive of goals than of present average conditions.

Members of the Haggin Fund Publications Committee (Frank L. McVey, W. D. Funkhouser, Edward Wiest, and E. F. Farquhar) made several helpful suggestions quite apart from their official task of deciding upon the book's suitability for publication. President Herman L. Donovan suggested the idea which has taken form in the book, and he has read each chapter as it was prepared. His encouragement throughout the undertaking is appreciated by the authors and the editor.

## TABLE OF CONTENTS

PEACE IN THE COMMONWEALTH.....	1
Howard W. Beers	
KENTUCKY HERITAGE .....	8
Thomas D. Clark	
THE ENERGY OF THREE MILLION PEOPLE.....	34
Howard W. Beers	
AGRICULTURE AND FORESTRY.....	50
Dana G. Card	
THE WEALTH IN ROCKS AND STREAMS.....	77
Arthur C. McFarlan	
WILDLIFE AND OUTDOOR KENTUCKY.....	102
William R. Allen	
INDUSTRIAL RESOURCES AND RESOURCEFULNESS.....	131
Marshall D. Ketchum	
NEW PRODUCTS FROM OLD MATERIALS.....	154
Laurence L. Quill	
LANES OF COMMERCE.....	171
Rodman Sullivan	
GOVERNMENT: THE PEOPLE'S BUSINESS.....	196
James W. Martin	
EDUCATION IN KENTUCKY.....	223
Maurice F. Seay	
HEALTH AND WELFARE.....	253
Irwin T. Sanders	
GOALS FOR KENTUCKY.....	280
Howard W. Beers	
A LIST OF SELECTED READINGS.....	302
INDEX .....	307

## **KENTUCKY : Designs for Her Future**



*Farms with electricity increased nearly 300 per cent . . . .*

W. Brooks Hamilton



*Public health programs have been extended . . . .*

W. Brooks Hamilton

## A LIST OF SELECTED READINGS

### KENTUCKY HERITAGE

*A History of Kentucky.* By Thomas D. Clark. New York: Prentice-Hall, Inc., 1937.

*History of Kentucky.* By W. E. Connelly and E. M. Coulter. Chicago: The American Historical Society, 5 volumes, 1922.

*Stage Coach Days in the Blue Grass.* By J. Winston Coleman. Louisville, Kentucky: Standard Printing Company, 1935.

*History of Kentucky.* By Richard H. Collins. Louisville, Kentucky: John P. Morton and Company, 1924.

*The Civil War and Readjustment.* By E. M. Coulter. Chapel Hill: University of North Carolina Press, 1926.

*Kentucky, A Guide to the Bluegrass State.* Federal Writers' Project. New York: Harcourt, Brace and Company, 1939.

*The Editorials of Henry Watterson.* By Arthur Krock. New York: George H. Doran, 1923.

*The Transylvania Colony.* By W. S. Lester. Spencer, Indiana: Samuel R. Guard and Company, 1935.

*Official Report of the Proceedings and Debates in the Convention assembled at Frankfort, on the eighth day of September, 1890, to adopt, amend or change the Constitution of the State of Kentucky.* 4 volumes. Frankfort, 1890.

*Pioneers of the Old Southwest.* By Constance Lindsay Skinner. New Haven: Yale University Press, 1921.

### THE ENERGY OF THREE MILLION PEOPLE

*Growth of Population in Kentucky, 1860-1940.* By Howard W. Beers. Lexington: Kentucky Agricultural Experiment Station Bulletin 422, 1942.

*Fertility Rates and Migration of Kentucky Population, 1920 to 1940.* By Merton D. Oylor. Lexington: Kentucky Agricultural Experiment Station Bulletin 469, 1944.

*Effects of War on Farm Population in Kentucky.* By Howard W. Beers. Lexington: Kentucky Agricultural Experiment Station Bulletin 456, 1944.

*Attitudes Toward Rural Migration and Family Life in Johnson and Robertson Counties, Kentucky, 1941.* By Robin M. Williams and Howard W. Beers. Lexington: Kentucky Agricultural Experiment Station Bulletin 452, 1943.

*Age Structure of Kentucky Population, 1940.* By Howard W. Beers and Robin M. Williams. Lexington: Kentucky Agricultural Experiment Station Bulletin 465, 1944.

### AGRICULTURE AND FORESTRY

*Soil Management for Kentucky.* By George Roberts. Lexington: University of Kentucky, Agricultural Extension Circular 272, 1939.

*Save the Soil and Improve It.* By George Roberts. Lexington: University of Kentucky, Agricultural Extension Circular 350, 1940.

*Types of Farming in Kentucky.* By Bruce Poundstone and Walter J. Roth. Lexington: Kentucky Agricultural Experiment Station Bulletin 357, 1935.

*Needs and Opportunities in Kentucky Agriculture After the War.* By Thomas P. Cooper. Lexington: Kentucky College of Agriculture and Home Economics, Extension Division Circular 404, 1945.

*Forestry in the Economic Life of Knott County, Kentucky.* By Donald B. Craig. Lexington: Kentucky Agricultural Experiment Station Bulletin 326, 1932.

*The Forest Problem in Kentucky.* Issued by the Kentucky Forest Service, State Department of Agriculture, Frankfort, 1926.

*Wood-Using Industries of Kentucky.* By F. W. Nichols, Kentucky State Forest Service, Department of Agriculture, Frankfort, 1932.

*The Southern Appalachians,* in *Land Policy Review*, Vol. VII, No. 1, Spring, 1944, Bureau of Agricultural Economics, United States Department of Agriculture. Washington.

Numerous bulletins, circulars and leaflets dealing with various phases of agriculture and rural living are distributed by the Kentucky College of Agriculture and Home Economics. A complete list may be obtained by request of the College.

#### THE WEALTH IN ROCKS AND STREAMS

*Geology and Mineral Resources of Part of the Cumberland Gap Coal Fields, Kentucky.* By G. H. Ashley and L. C. Glenn. Washington, D. C.: United States Geological Survey, Professional Paper 49, 1906.

*Geology and Mineral Resources of Jefferson County, Kentucky.* By C. Butts. Frankfort: Kentucky Geological Survey, Series 4, Volume 3, Part 2, 1915.

*Fluorspar Deposits of Kentucky.* By L. W. Currier. Frankfort: Kentucky Geological Survey, Series 6, Volume 13, 1923.

*The Geology and Coals of Webster County, Kentucky.* By L. C. Glenn. Frankfort: Kentucky Geological Survey, Series 6, Volume 5, 1922.

*The Coal Industry in Kentucky.* By W. R. Jillson. Frankfort: Kentucky Geological Survey, Series 6, Volume 20, 1924.

*Geology of Kentucky.* By A. C. McFarlan. Lexington: University of Kentucky, 1943.

*The Clay Deposits of Kentucky.* By H. Ries. Frankfort: Kentucky Geological Survey, Series 6, Volume 8, 1922.

*Geologic Map of Kentucky.* Frankfort: Kentucky Geological Survey, 1929.

#### WILDLIFE AND OUTDOOR KENTUCKY

*The Lure of Kentucky, A Historical Guide Book.* By Maude Ward Laferty. Louisville, Kentucky: Standard Printing Company, 1939.

*Kentucky: A Guide to the Bluegrass State.* Federal Writers' Project. New York: Harcourt, Brace and Company, 1939.

*Kentucky: A Pioneer Commonwealth.* Commonwealths of America Series. By N. S. Shaler. Boston: Houghton-Mifflin Company.

*Wild Life in Kentucky.* By W. D. Funkhouser. Frankfort, Kentucky: Kentucky Geological Survey, 1925.

*Cave Life of Kentucky.* By Vernon Bailey. (Invertebrate section by Leonard Giovannoli.) South Bend, Indiana: American Midland Naturalist, XIV (5), 385-636, 1933. Reprinted and repaged, Notre Dame University Press, 1934.

*Wildlife Conservation.* By Ira N. Gabrielson. New York: The Macmillan Company, 1941.

*A Nature Sketchbook.* By W. R. Allen. Lexington: University of Kentucky, 1936.

*America's Natural Wealth.* By Richard Lieber. New York: Harper and Brothers, 1942.

*Fading Trails.* Edited by Daniel B. Beard. New York: Macmillan Company, 1942.

*Fish and Game, Now or Never.* By Harry Bartow Hawes. New York: D. Appleton-Century Company, 1935.

*Kentucky Units in Conservation of Wildlife and Other Natural Resources.* By James J. Gilpin. Frankfort, Kentucky: Kentucky Department of Education, Educational Bulletin IX, No. 6, 1941.

#### MANUFACTURING RESOURCES AND RESOURCEFULNESS

*Kentucky Manufacturing, An Initial Report.* By W. Scott Hall. Frankfort: Commonwealth of Kentucky, Department of Revenue, Special Report No. 4, 1941.

*Southern Industry and Regional Development.* By H. L. Herring. Chapel Hill: University of North Carolina Press, 1940.

*Industrial Location and National Resources.* National Resources Planning Board. Washington, D. C.: U. S. Government Printing Office, 1943.

*History of Manufactures in the United States.* By Victor S. Clark. Washington, D. C.: Carnegie Institution of Washington, 1929.

*The Structure of Manufacturing Production.* By Charles A. Bliss. New York: National Bureau of Economic Research, 1939.

*Location of Manufactures 1899-1929.* U. S. Department of Commerce. Washington, D. C.: U. S. Government Printing Office, 1933.

*The Structure of Industry.* Temporary National Economic Committee Monograph No. 27. Washington, D. C.: Government Printing Office, 1941.

*Manufacturers Record.* (Monthly issues.) Baltimore, Maryland: Manufacturers Record Publishing Company.

*Southern Economic Journal.* (Quarterly issues.) Chapel Hill: The Southern Economic Association and the University of North Carolina Press.

*An Analysis of State Industrial Development Programs in the Thirteen Southern States.* By Paul Barnett. Knoxville, Tennessee: University of Tennessee Press, 1944.

#### NEW PRODUCTS FROM OLD MATERIALS

*Modern Chemists and Their Work.* By Christy Borth. New York: The Garden City Publishing Company, 1943.



*Coal Research at the University of Kentucky.* By C. S. Crouse. Lexington: The Kentucky Engineer, Vol. VI, No. 2, February, 1944.

*The Ground-Water Investigation at Louisville, Kentucky.* By W. T. Stuart. Lexington: The Kentucky Engineer, Vol. VI, No. 3, pp. 18-22, May, 1944.

*Coal Carbonization.* By Horace C. Porter. New York: The Chemical Catalog Co., Inc. (now Reinhold Publishing Co.), 1924.

*Coal's New Horizons.* By Harold L. Ickes. Coal Age, April, 1943.

*Domestic Coke from Illinois Coals.* By Frank H. Reed and Harold W. Jackman. Industrial & Engineering Chemistry, Vol. 36, No. 4, pp. 304-307, April, 1944.

*Plastics in the World of Tomorrow.* By B. W. Leyson. New York: E. P. Dutton & Co., 1944.

#### GOVERNMENT AND TRANSPORTATION

*Kentucky Government, 1939-1943.* By Keen Johnson. Available from University of Kentucky Bureau of Business Research, Lexington, 1943.

*Kentucky Government, 1935-1939.* By A. B. Chandler. Available from University of Kentucky Bureau of Business Research, Lexington, 1939.

*Administration of the County Debt Act.* By Harry R. Lynn. Frankfort: Kentucky Department of Revenue, 1943.

*Relation of Taxation to Industrial Development in Kentucky.* By James W. Martin. Lexington: University of Kentucky Bureau of Business Research, 1943.

*A Decade of Change in Kentucky Government and Politics.* By J. E. Reeves, and others. Lexington: Department of Political Science, University of Kentucky, 1943.

*Kentucky Highways.* Department of Highways of Kentucky. Frankfort: A report of the Kentucky Highway Planning Survey, 1943.

#### EDUCATION

*Financial Support, Financial Ability, and Inequalities Existing in Various School Systems in Kentucky.* Bulletin of the State Department of Education, Vol. XI, No. 2, April, 1943. Frankfort, Kentucky.

*A History of Public Education in Kentucky to 1932: A Study of the Development and Control of Public Education Based upon the Constitutional Provisions and the Legislative Acts of the General Assembly.* By M. E. Ligon. Bulletin of the Bureau of School Service, University of Kentucky, Vol. XIV, No. 4, June, 1942.

*Financing Public Elementary and Secondary Education in Kentucky.* By L. E. Meece and Maurice F. Seay. Bulletin of the Bureau of School Service, University of Kentucky, Vol. XII, No. 1, September, 1939.

*Proceedings of the Nineteenth Annual Educational Conference and the Eighth Annual Meeting of the Kentucky Association of Colleges and Secondary Schools.* Bulletin of the Bureau of School Service, University of Kentucky, Vol. XVI, No. 2, December, 1943.

*Planning for Education in Kentucky.* By Maurice F. Seay and L. E. Meece. Bulletin of the Bureau of School Service, University of Kentucky, Vol. XVII, No. 1, September, 1944.

*Securing Trained Administrators for the Public Schools of Kentucky.* Bulletin of the State Department of Education, Frankfort, Kentucky, Vol. XI, No. 7, September, 1943.

#### HEALTH AND WELFARE

*Bulletin of the Department of Health.* Published monthly by the State Department of Health, Louisville, Kentucky.

*Child Welfare in Kentucky.* By Mrs. Robert I. Kutak. Louisville: Kentucky Emergency Relief Administration, 1935 (Mimeographed).

*Handbook of American Institutions for Delinquent Juveniles.* Vol. II—Kentucky-Tennessee. Edited by W. B. Cox, J. A. Shelly, and G. C. Minard. New York: The Osborne Association, 1940.

*Kentucky Department of Welfare Bulletin.* Published periodically by the State Department of Welfare from 1939-1943. Discontinued in 1943.

*Report of the Committee on Medical Economics of the Kentucky State Medical Association.* Bulletin of the Department of Health, Louisville. Vol. XII, No. 1, August, 1939.

*Social Security Bulletin.* Social Security Board, Washington, D. C. Vol. VII, No. 4, April, 1944.

*The Kentucky Poor Law, 1792-1936.* By Emil McKee Sunley. Chicago: University of Chicago, 1942.

#### OTHER GENERAL READINGS

*Progress Report.* Kentucky State Planning Board. Frankfort: 1935 (Mimeographed).

*Your Community: Its Provision for Health, Education, Safety, and Welfare.* By Joanna Colcord. New York: Russell Sage Foundation, 1939.

*Southern Regions of the United States.* By Howard W. Odum. Chapel Hill: University of North Carolina Press, 1936.

A series of reports prepared by various specialists, and under the auspices of the Committee for Kentucky, Louisville, 1945.

*Program and Addresses, State Conference on Kentucky Problems held at University of Kentucky, Lexington, March 4-5, 1919.* Kentucky Council of Defense, Frankfort, Kentucky, The State Journal Company, Printer to the Commonwealth, 1919.

## INDEX

- Abolitionists, 23  
Academies, private, 21  
Adair County, 176  
Adams, John, 17  
Adams, John Quincy, 26  
Adult education  
    *See* Education  
Aged persons, 44  
    *See* Old Age Assistance  
Agricultural Experiment Station, 167, 169, 250  
Agricultural Extension Service, 211, 212, 250  
Agriculture, 28, 46, 50-67, 136, 289-291  
    *See* Farm  
Aid  
    to needy blind, 260, 268, 277  
    to dependent children 268, 277  
    *See* Welfare  
Air conditioning, 166  
Air traffic, 184, 194  
Air Transport Association, 184  
Airborne carriers, 295  
Airports, municipal, 184  
Airways in Kentucky, 183  
Alabama, 91, 133, 181, 182  
Alcohol, 162, 167, 168  
Allegheny Mountains, 50  
Alfalfa, 59, 64  
Alien and Sedition Acts, 17, 25  
Allen County, 87  
Almhouses, 271  
American Printing House for the Blind, 254  
American Revolution, 11, 12  
Ammonia, 164  
Anchorage, 228  
Animals  
    aquatic, 113  
    species of, 123, 127, 293  
Anthropology, 117  
Anti-pellagra vitamin, 167  
Antiseptics, 155  
Appalachian Mountains, 14, 82, 97  
Apples, 60  
Appomattox, 27  
Aquiculture, 113  
Archaeology, 117  
Arizona, 184  
Arkansas, 60, 133, 181  
Army engineers, 95  
Artesian wells, 91  
Ashland, 38, 135, 164, 177, 191, 203  
Asphalt, rock, 87  
Atlantic Coast, 134, 171, 182, 183  
Attitudes, 20, 282  
Attitudes toward  
    crime, 272, 273  
    government, 209, 222, 297  
    industry, 144, 145, 294  
    loyalty, 283  
    manufacturing, 144, 148  
    mental illness, 262  
    smokeless fuel, 160  
    taxes, 215  
Auditor of Public Accounts, 212, 216, 219  
Audits, 214, 216, 219  
Augusta, 253  
Ballard County, 89  
Ballot, short, 198, 296  
Banks, 136  
Barite, 88  
Barren County, 120  
Barren River, 112  
Bat Cave, 99  
Battle of Britain, 163  
Baxter, 177  
Beattyville, 116  
Beaver Creek, 112  
Bedford limestone, 90  
Beech, 71

- Beef cattle, 61, 63, 76, 290  
 Bell County, 79, 81  
 "Between the Rivers" region, 92  
 Big Bone Lick, 101  
 Big Sandy River, 177, 178, 182  
 Bill of Rights, 17, 25  
 Biological survey, 117, 120, 293  
 Birds, 115, 124  
 Birmingham, 91  
 Birth rates, 40  
     *See* Population  
 Bituminous, 82  
 Black walnut, 71  
 Blackfish, Chief, 12  
 Blainville, Celeron de, 9  
 Blair, Francis P., 20  
 Blind, the, 4, 260, 268, 277  
     *See* Welfare  
 Bluebird Creek, 112  
 Bluegrass, 27, 51, 53, 58, 60ff., 77, 87,  
     89, 99, 100, 104  
 Bluestone, 90  
 Board of Charities and Corrections,  
     268  
 Board of Investigation and Research,  
     188, 190, 191  
 Boards of Education, local, 233  
 Boone County, 101, 183  
 Boone, Daniel, 9, 10, 12, 68, 97  
 Boonesborough, 10, 12  
 Bowling Green, 60, 85, 190  
 Bowling Green limestone, 90  
 Boyd County, 81, 92, 183  
 Bradford, John, 20  
 Bradford, Dr. Joshua, 253  
 Braille, 260  
 Brandenburg, 90, 91  
 Breckinridge County, 84, 87, 91  
 Breckinridge, Desha, 20  
 Breckinridge, John, 13, 17, 25  
 Breckinridge, Robert J., 27  
 Breckinridge, W. C. P., 20  
 Breeding herds, 290  
 Brick, 89  
 Bridges, 179, 193  
 Brines, 91, 154  
 Britain, 25, 156, 198  
 British and Indian War, 11, 12  
 British Thermal Units, 82  
 Brown, Dr. Samuel, 253  
 Budget hearing, 218  
 Budgeting, 214, 215  
 Building stone, 90, 154, 292  
 Bureau of Medical Service, 259  
 Bureau of School Service, 242  
 Bureau of Transport Economics and  
     Statistics, 189  
 Burksville, 85  
 Burley Pool, 29  
 Burnside, 98, 182  
 Butler County, 176  
 Cahokia, 12  
 Cairo, 111, 177, 203  
 Calcite, 88, 89  
 Calcium, 54, 55  
 Calcium fluoride, 165  
 Caldwell County, 77, 88  
 California, 86  
 Campbell County, 183  
 Camping, 68, 70, 72  
     *See* Wildlife  
 Campton, 85  
 Canada, 23, 176  
 Cane Ridge, 19  
 Carolinas, 181  
 Carter Caves, 99, 100  
 Carter County, 81, 87, 89, 92, 100  
 Carver, 166  
 Cascade Caverns, 100  
 Casey County, 176  
 Cattle, 63, 64  
     *See* Beef; Dairy  
 Cave Gap, 97  
 Caves, list of, 99, 100  
 Cellophane, 158, 161, 168  
 Cement, 89, 90, 292  
 Central Kentucky, 36, 51, 52, 60, 62,  
     77, 88  
 Chambers of Commerce, 145, 151  
 Charleston, 183  
 Chattanooga, 182, 183

- Chemicals, 159, 161, 169  
 Chemists, 154  
 Chemurgy, 166, 168  
**Cherokee Indians**, 10, 11  
 Chesapeake and Ohio Railway, 177, 191  
 Chicago, 137, 156, 177, 183  
 Child labor, 45  
 Child Welfare Division, 261, 269, 270  
 Child Welfare workers, 269  
 Children, 35, 44, 297  
 Church, 19, 49, 250, 288  
 Cigarettes, 143  
 Cincinnati, 42, 60, 65, 137, 177, 183, 184, 190  
 Cincinnati Arch, 77, 79, 86, 291  
 Cities, rise of, 14, 37, 103, 209  
     *See* Towns  
 Civil War, 22, 23, 26, 27, 133, 172  
 Clark, George Rogers, 12  
 Clay, 26, 89, 90, 154, 292  
 Clay County, 255  
 Clay, Henry, 13, 17, 25, 26, 63  
 Climate, 52, 53, 62, 64, 75, 133  
 Clinton County, 87, 176  
 Clover, 53, 54, 60  
 Cloverport, 91  
 Coal, 29, 79, 96, 101, 154-160, 172, 191, 291  
 Coal fields, 79, 97, 98, 100, 159  
 Coal seams, names of, 82, 84  
 Coke, 155-160, 163, 294  
     *See* Smokeless fuel  
 College of Agriculture and Home Economics, 250  
 College of Education, 250  
 Colleges in Kentucky, 246  
 Commerce, 171ff.  
 Commercial fisheries, 126  
 Committee on Medical Economics, 255, 259  
 Community, 46, 48, 125  
 Community Chests, 271  
 Compromise of 1850, 26  
 Confederacy, 24, 27  
 Confederation of States, 15  
 Conglomerate rock, 98  
 Congressional Small Business Committee, 188  
 Conservation, 69, 96, 105ff., 111, 116ff., 130, 160, 290ff.  
 Constitution, the,  
     of Kentucky, 15, 16, 17, 21, 23, 30, 31, 196, 197, 224, 225, 287, 296  
     of the United States, 25  
 Consumption, relation to production, 142  
 Contour cultivation, 55, 75, 290  
 Cooperage, 136, 142  
 Co-operative associations, 67, 72  
 Corbin, 177  
 Corn, 53, 58, 59, 167, 168  
 Corn Belt, 28, 39, 51, 65  
 Corporations, 121, 153  
 Cotton-bagging factories, 132  
 Cotton, export, 171  
 Cotton South, the, 39, 51  
 Cotton weaving, 133  
 Counties, size of, 209  
 County agricultural agents, 250  
 County Debt Act, 215  
 County  
     Health Department, 256  
     jails, 274  
     judge, 210, 276, 277  
     libraries, 250  
     officials, 209  
 County welfare departments, 276  
 Courts, 16, 17  
     Appeals, 26, 197, 210, 211  
     Circuit, 210  
     County, 210  
     Fiscal, 210, 276  
     Juvenile, 273  
     Magistrates, 210  
 Cover crop, 54, 59, 75  
 Covington, 41, 91, 177, 183  
 Crab Orchard, 128  
 Credit aids, 291  
 Creelsboro Bridge, 99  
 Crime, 254, 273, 275, 301  
 Crippled children, 261, 262

- Crittenden County, 77, 88, 212  
 Crittenden, John J., 26, 27  
 Crops, 13, 56, 59, 115, 166, 168  
     forest, 129  
 Cumberland County, 87, 176  
 Cumberland Falls, 97ff., 182  
 Cumberland Gap, 8, 10, 14, 68, 97  
 Cumberland Mountain, 97  
 Cumberland National Forest, 126  
 Cumberland Plateau, 36ff.  
 Cumberland Plateau Margin, 41  
 Cumberland River, 14, 70, 85, 87, 95,  
     97, 98, 99, 100, 107, 182, 295  
 Curriculum, natural science, 119  
  
 Dairy cattle, 61, 75, 290  
 Dairy products, 168  
 Dairying, opportunity for, 51, 64, 142  
 Dams, 93, 95, 96, 113  
     *See* Flood control; Water power  
 Danville, 254, 260  
 Dawson Springs, 84, 128  
 Dayton, 190  
 Deaf, the, 260  
     *See* Welfare  
 Death rate, 255  
 Debt, public, 205, 206  
 Deer, 122, 126  
 Deflation, 29, 30  
 Dehydrating plants, 67  
 Delinquency, 254, 273, 276, 301  
 Democrat, 26, 29, 31  
 Dependents, 44  
 Depot location, 295  
 Depression, 36, 42  
 DeQuindre, Lieutenant, 12  
 Detroit, 11  
 Devou park, 91  
 Distilled liquors, 143  
 Distilleries, 63, 132  
 Diversion ditches, 75, 290  
 Division of Hospitals and Mental  
     Hygiene, 267  
 Division of Special Education and  
     Vocational Rehabilitation, 261  
 Dix River, 94, 100  
  
 Dragging Canoe, 11  
 Drainage, 105, 107  
 Drouths, 112  
 Dunmore's War, 10  
  
 Eastern Kentucky, 14, 69, 84, 92  
 Eastern State Teachers College, 22,  
     224  
 Eastern Territory, 187, 191  
 Eastman, Joseph B., 185  
 Economic factors, 110, 131, 143, 147,  
     149  
 Eddyville, 274  
 Edinburgh, 253  
 Edmonson County, 87, 99, 176  
 Education, 4, 16, 223-252, 298  
     adult, 118, 250, 298  
     agencies, 250, 251  
     agricultural, 67, 291  
     content of, 239  
     effects of depression, 225  
     effects of war, 297  
     enrollment, 237, 238  
     evaluation of, 251  
     financing, 204, 224, 227, 245, 246,  
         248  
     higher, 22, 298  
     history of in Kentucky, 223, 224  
     needs, 228, 230, 297  
     number of schools, 237  
     personnel, 234  
     public vs. private, 247  
     transportation problems, 238  
 Edwards, Ford K., 188, 189  
 Efficiency Commission, 207, 219  
 Efficiency, financial, 287  
 Egg production, 64  
 Election, 17, 199  
 Electricity, 48, 64  
 Elizabethtown, 177  
 Elk Lick Falls, 100  
 Elkhorn City, 95, 191  
 Elliott County, 177  
 Emancipationists, 23  
 Enameling industry, 165  
 Engineering, College of, 95

- Engines, 165  
 England, 8, 50, 163  
   *See* Britain  
 Equalization of school funds, 225, 226  
 Erie Canal, 134  
 Erosion, 51ff., 75ff., 87, 98, 100, 105  
 Estill County, 242  
 Europe, 133, 134  
 Evansville, 183  
 Exhibits, traveling, 118  
 Expenditures, state, 204, 205  
 Experiments, 159, 290  
 Exploitation, 102, 116  
 Explorers, 8  
 Exports, 18, 19, 171, 184  
 Extension services, 118, 120  
 Extractive industries, 131
- Factional conflict, 17, 26  
 Factories, 141, 288, 294  
   *See* Industry; Manufacturing  
 Faircloth mine, 89  
 Falls of the Ohio, 10, 98  
 Family, the, 47  
 Farm, 50-76  
   income, 28, 50, 51  
   management, 53, 55  
   natural history on, 104, 123  
   ownership, 291  
   rental contract, 66, 67  
 Farm colonies for the feeble-minded, 266  
 Farmers, 90, 290  
 Farming, types of, 14, 29, 51  
 Farms, 50, 122, 124, 288  
   facilities on, 3, 4  
   *See* Agriculture  
 Faults, geological, 77, 88  
 Fayette County, 12, 37, 104, 121, 125, 183, 212, 220  
 Federal Social Security Act, 261  
 Federal Vocational Education Act, 243  
 Feed, 56, 59  
 Feeder cattle, 63  
 Feeding grounds, 118
- Fertility rates, population, 40  
 Fertility, soil, 50, 59, 290  
 Fertilizer, agricultural, 55, 75, 290  
 Fields, Governor William J., 24  
 Fifteenth Amendment, 28  
 Financial control law, 208  
 Financial reporting, State, 214, 216, 217  
   *See* State Department of Finance  
 Finley, John, 9  
 Fires, domestic, 156  
 Fish (and fishing), 68, 70, 76, 111ff., 118ff., 155  
 Flatboat, 98, 171  
 Floods, 110  
   control, 93, 95, 96, 110-112, 121  
   plains, 111  
   walls, 70  
 Florida, 55, 133, 181  
 Flour mills, 132  
 Floyd County, 79, 81, 85, 86  
 Fluorine, 165, 166  
 Fluorite, 88, 154, 165, 292  
 Fluorspar, 79, 165, 166  
 Flux, 88  
 Ford, Henry, 166  
 Forest fire, 71-73, 291  
 Forests and forestry, 68-76, 103, 104, 114, 116, 125, 168, 291-293  
 Forests, public, 71, 104, 112, 121, 126, 293  
 Forges, 132  
 Fort Duquesne, 8  
 Fort Thomas, 228  
 Forty Thieves' banks, 26  
 Fossil mammals, 101  
 4-H Club, 114, 123, 251  
 Fourteenth Amendment, 28  
 Fox, John, Jr., 14  
 Frankfort, 18, 26, 254, 266  
 Franklin, 60  
 Franklin County, 89  
 Freestone, 90  
 Free textbooks, 225  
 Freezing plants, 67

- Freight rates, 28, 74, 185-192, 295  
   class, 186, 187, 189  
   commodity, 187, 188, 191  
   computation of, 185, 186  
   effect on industry, 190  
   territorial classification, 186  
 French, 9, 50  
 French and Indian War, 9  
 Freon, 165  
 Fruit, 60  
 Fulling mills, 132  
 Fulton, 177  
 Furnace stokers, 157  
 Furnaces, 132, 156  
 Furniture, 142  
 Fur production, 127  
  
 Galena, 88  
 Game, 76, 114, 120, 126, 293  
 Game and Fish Commission, 118  
 Game and Fish Division, 120  
 Gary, 137  
 Gas, natural, 79, 85, 87, 92, 101, 154,  
   161, 164, 292  
 Gasoline, 163, 164  
 Catliff, 228  
 General Assembly, 197, 216  
 Geology, 77, 92, 97, 117  
 George III, 9  
 Georgetown, 10  
 Georgia, 133, 181  
 German immigrants, 150  
 Germany, 163  
 Gilpin, 118  
 Ginseng, 171  
 Gist, Christopher, 8  
 Glacial outwash, 91  
 Glass, 88  
 Goals, 281-283  
 Goebel, William, 31  
 Government, 15, 169, 196-222, 296  
   finance, 214, 219  
   local, 15, 209, 212, 215  
   personnel, 208, 210, 213, 297  
   popular control, 198-200  
   purchasing, 215  
  
 Government—Continued  
   reorganization, 207, 208, 213, 297  
   state-local relations, 211-212  
 Governor, 149, 158, 221  
 Grading, 67  
 Grady, Henry W., 21  
 Grain, 58, 59, 167  
 Grand Jury, 220  
 Grass, 53, 63  
 Grass-livestock-tobacco economy, 76,  
   290  
 Gratz, 89  
 Gravel, 79, 91, 154, 292  
 Graves County, 89  
 Grayson County, 87  
 Grazing, 71  
 Great Lakes, 191  
 Great Lakes of the South, 182  
 Green County, 176  
 Green River, 100, 107, 112, 128, 182  
 Greendale, 220, 270, 274, 278  
 Greenup County, 92  
 Group health insurance, 299  
 Growing season, 53, 54  
 Grundy, Felix, 25  
 Gulf Coast, 182  
 Gulf, Mobile and Ohio Railway, 177  
 Gypsum deposits, 100  
  
 Haldeman, W. N., 20  
 Hall of Fame, 253  
 Hall, Scott, 148  
 Hall's Gap, 116  
 Hamilton, 190  
 Hamilton, Governor Henry, 12  
 Hancock County, 84  
 Handicrafts, 74  
 Handling charge, terminal, 186  
 Hanging Rock region, 92  
 Hardin County, 87, 90, 91  
 Harlan County, 36, 39, 79, 81, 177,  
   178  
 Harriman, 177  
 Harrod, James, 10  
 Harrodsburg, 35



- Harrodstown, 10  
 Hat factories, 132  
 Hay, 58, 59, 61  
 Health, 204, 211, 254-268, 300  
   *See* State Department of  
 Hemlock, 71  
 Hemp, 23, 28, 132, 136, 168  
 Henderson, 60, 177, 183  
 Henderson County, 12, 85  
 Henderson, Judge Richard, 10, 11  
 Henry County, 89  
 Herefords, 63, 76  
 Herrington Lake, 100, 113, 120  
 Herty, 166  
 High Bridge, 94  
 Highland Rim and Cumberland  
   Plateau Margin, 37  
 Highways, 67, 178-181, 193-195, 204,  
   205, 211, 212, 295, 296  
 Hinkstons, 10  
 Hodges, Albert Callatin, 20  
 Hogs, 65, 76  
 Holding company, 205  
 Home demonstration agents, 250  
 Homes, 48, 291  
 Hopkins County, 82, 84  
 Horses, 32, 63, 76  
 Hosiery, 142, 150  
 Hospitalization, 259  
 Hospitals, distribution of, 255  
 House of Representatives, 169  
 Houses of Reform  
   *See* Greendale  
 Housing, 48  
 Human resources, 254  
   *See* Population  
 Humus, 54  
 Hunting, 68, 70, 72, 114, 122, 128  
 Hydroelectric power  
   *See* Water power  
 Hydrofluoric acid, 88  
 Illinois, 42, 79, 84, 92, 156, 166, 178,  
   183, 207  
 Immigrants, 134  
 Income, 67, 69, 75, 125, 170, 284,  
   285, 286, 289  
 Indian Warrior Trail, 97  
 Indiana, 42, 84, 90, 92  
 Indians, 11, 50  
 Industrial  
   balance, 287  
   development, 27, 29, 79, 133, 135,  
     139, 143, 148, 294  
   location, 144, 148, 149, 150, 151  
   research, 169  
 Industrialization  
   mineral basis for, 92  
 Industry, 30, 132, 154, 169  
   chemical, 162  
   local, 74  
   movement of, 150, 151  
   suitable for Kentucky, 74, 139, 150,  
     151, 152, 161  
   wood-working, 291  
   *See* Manufacturing  
 Infant mortality, 255  
 Inflation, 25  
 Inner Bluegrass, 37, 39, 40  
 Insanity, 265  
   *See* Mental illness  
 Insecticide, 167  
 Insects, 114, 115  
 Institute for the Feeble-minded, 266  
 Institutions  
   growth of, 19  
   influencing industry, 144  
 Insurance, state, 72  
 Interdependence, economic, 145, 146  
 Interstate Commerce Act, the, 190  
 Interstate Commerce Commission, 28,  
   182, 185, 186, 188, 189  
 Iron, 91, 154, 166  
 Investigations, governmental, 220, 221  
 Investment, 153  
 Ireland, 34  
 Irrigation, 112, 113  
 Irvine, 89, 116  
 Jackson, 228  
 Jackson, Andrew, 26

- Jackson County, 177, 242  
 Jackson Purchase, the, 12  
     *See* Purchase Subregion  
 Jamestown, 9  
 Japan, 168  
 Jefferson County, 12, 39, 141, 212  
 Jefferson, Thomas, 13, 17, 18, 197  
 Jeffersonian republicans, 25  
 Jim's Creek, 99  
 Jobs, number of, 287  
 Johnson County, 81, 85  
 Johnson, Governor, 202  
 Johnson, Richard M., 25  
 Jordan, David Starr, 120  
 Judges  
     election vs. appointment, 211  
 Judiciary, 210  
     *See* Courts  
 Justice, 274  
 Juvenile courts, 273  
 Juvenile delinquency, 273, 276
- Kansas City, 137  
 Kaskaskia, 11  
 Kennedy, William F., 188  
 Kenton County, 183  
 Kentuckians  
     attitudes of, 1, 4, 22, 33  
     *See* Attitudes  
 Kentucky, 3, 8, 13, 16, 27, 28, 97,  
     122, 133, 134, 150, 288  
     diversity in, 226, 281  
 Kentucky Children's Home, 269  
 Kentucky County, 12  
 Kentucky Crippled Children's Com-  
     mission, 261  
 Kentucky Dam, 93  
 Kentucky District, 12, 15  
 Kentucky Education Association, 225  
 Kentucky Educational Commission,  
     225, 251  
 Kentucky Gazette, 20  
 Kentucky Planning Board, 119  
 Kentucky resources  
     list of, 92  
     *See* Resources
- Kentucky River, 10, 70, 89, 92, 94,  
     95, 112, 116, 182  
 Kentucky River Gorge, 100  
 Kentucky Society for Crippled  
     Children, 261  
 Kentucky State Medical Association,  
     255, 261  
 Kentucky State Tenancy Commission,  
     66  
 Kentucky University, 224  
 Kentucky Utilities Company, 94  
 Kentucky's rank, 3, 50, 51  
     in highways, 178, 179  
     in mental illness, 262  
     manufacturing, 137, 138, 140  
     population, 137  
     railroads, 174  
 Kilowatt, 94  
 King Cotton, 172  
 Kinniconnick Creek, 112  
 Kissinger, 89  
 Knobs, 87  
 Knott County, 81, 177  
 Knox County, 81, 85  
 Knoxville, 182, 183  
 Kosmosdale, 90
- Labor, 28, 61, 131, 142, 143, 149, 160  
     force, 29, 44  
     supply, 64, 67, 74, 130, 132, 136,  
         152, 164, 287, 289  
 LaGrange, 274  
 Lake ports, 135  
 Lake Superior, 91, 134  
 Lakes, 103, 111, 113  
 Land, 13, 130, 289  
     division of, 21, 28  
     grants to counties, 21  
     laws, 13, 287  
     public, 122, 125  
     submarginal, 128  
     tillable, 292  
     use of, 27, 56, 128, 143, 290  
 Landlord, 53, 290  
 Landscape, 77, 84, 97, 128  
 Lanital, 168

- Lava, 77  
 Lawrence County, 85  
 Leaching of soil, 52, 75  
 Lead, 88, 166  
 Leadership, 5, 32, 47, 229, 289  
     *See* Personnel  
 League of Kentucky Sportsmen, 114  
 Lebanon, 176  
 Lee Sandstone, 98  
 Legislation, 170, 208, 221  
 Legislative  
     committees, 219  
     Council, 208, 209, 219  
     policy, 208  
 Legumes, 54, 55, 58  
 Leslie County, 177  
 Lespedeza, 59, 64  
 Letcher County, 79, 81  
 Lewis County, 120  
 Lexington, 18, 41, 63, 100, 132, 162,  
     177, 183, 190, 191, 212, 216, 221,  
     233, 254  
 Libraries, 119, 250, 298  
 Licking River, 10, 14, 112  
 Licking River Valley, 96  
 "Light house," 99  
 Lignite, 87  
 Linch-pin theory, 14  
 Lincoln, Abraham, 27  
 Lincoln County, 12  
 Lime, 54  
 Limestone, 77, 85, 88ff., 98, 100  
     caverns, 54  
     *See* Caves  
     regions, 90, 99  
 Liquor industry, 137  
 Lithopone, 88  
 Livestock, 13, 28, 54, 56, 61, 75, 154,  
     192, 290  
 Livingston County, 77, 88, 176, 212  
 Local industries, 294  
 Locke, John, 16  
 Lockport, 89  
 Locks, 94, 95  
 Logan County, 87  
 Logan's Fort, 10  
 London, 155  
 Looms, 132  
 Louisiana, 127, 133, 179, 181  
 Louisiana Purchase, 18, 25, 171  
 Louisville, 10, 18, 34, 41, 45, 60, 70,  
     90, 91, 98, 111, 156, 162, 164, 177,  
     183, 184, 190, 212, 221, 254, 260  
 Louisville and Jefferson County  
     Children's Home, 274  
 Louisville and Nashville Railway, 27,  
     177, 188  
 Louisville Area Development Associa-  
     tion, 156  
 Louisville Courier-Journal, the, 20, 28  
 Louisville Dam, 94  
 Louisville Falls, 94  
 Louisville Gas and Electric Company,  
     94  
 Louisville Journal, the, 20  
 Louisville Metropolitan Subregion, 40  
 Lower South, the, 23, 32  
 Loyal Land Company, 8  
 Lucite, 161  
 Lumber, 68, 74, 142  
 Luncheon clubs, 114  
 Lyon County, 93  
 Lyon, Dr. A. M., 267  
 McClelland's, 10  
 McCreary County, 81, 85, 99, 100,  
     242  
 McDowell, Dr. Ephraim, 253  
 Madison County, 89  
 Magistrates, 210  
 Magoffin, Beriah, 27  
 Magoffin County, 85  
 Mammoth Cave, 97, 99, 124  
 Managerial skill, 131  
 Manslaughter, 254  
 Manufacturing, 46, 131-153, 141, 294  
     *See* Industry  
 Marketing, 56, 60, 67, 75, 291  
 Markets, 6, 135  
     and manufacturing, 135, 136  
     and transportation, 173  
 Marshall County, 89, 93

- Martin County, 81, 177  
 Massachusetts, 132, 150  
 Materials for schools, 242, 298  
 Maternal mortality, 255  
 Meade County, 90, 91  
 Meat-packing industry, 137  
 Medical  
   associations, 256, 261  
   care, 255ff.  
   Guidance Board, 259  
   tradition, 253  
 Medicinal industries, 158  
 Menifee County, 39, 86, 177  
 Mental  
   deficiency, 266  
   hospitals, 263-265  
   illness, 4, 262ff., 299  
 Mercer County, 89  
 Merit System, 4, 5, 213, 297  
 Metcalfe County, 176  
 Metropolitan subregions, 40  
 Michigan, 42, 122  
 Middle West, 134, 139  
 Middlesboro Basin, 97  
 Migration, 14, 27, 41ff., 51, 133, 143, 287, 289  
 Migratory bird act, 123  
 Militia, 16  
 Milk, 168  
 Minerals, 77, 88, 92, 101, 151, 165, 166, 292  
 Mines, 46, 159, 288, 291  
 Minnesota, 60, 134  
 Mississippi, 133, 181  
 Mississippi Delta, 82  
 Mississippi gateway, 171  
 Mississippi River, 17, 18, 111, 141, 171, 182  
 Mississippi Valley, 17, 30  
 Mississippian strata, 90, 92, 99  
 Missouri, 60  
 Monopolistic agreements, 146  
 Monroe County, 87, 176  
 Montana, 183  
 Morgan County, 81, 177  
 Morrill Act, 22, 224  
 Mory, S. A., 95  
 Motor fuel, 163  
 Mt. Vernon, 177  
 Muhlenberg County, 82, 84  
 Mullins, 90  
 Mundy's Landing, 89  
 Munitions, 55  
 Museum, natural history, 117, 119, 125  
 Muskellunge, 120  
 Mussel, 126  
 Nashville, 183  
 Nashville, Chattanooga and St. Louis Railway, 177  
 National Educational Association, 230  
 National Emergency Highways, 193  
 National policies, 146, 147  
 National Youth Administration, 244  
 Nation's Business, 187  
 Natural beauty, 97, 100, 101  
 Natural bridges, 98, 99  
 Natural history, 118, 127  
   *See* Wildlife  
 Natural increase, 40  
   *See* Population  
 Natural law, 125  
 Natural resources  
   *See* Resources  
 Nature  
   balance of, 114  
   familiarity with, 103  
   *See* Wildlife  
 Navigation, 93, 112  
 Negroes, 23, 27, 28, 38, 224, 230, 248  
 Neighborhood, country, 5  
 Neighborhood school, 240-242  
 Nesting-sites, 115  
 Nevada, 184  
 New England, 13, 133, 134  
 New Madrid earthquake, 100  
 New materials, development of, 154ff.  
 New Mexico, 184  
 New Orleans, 17, 19, 171, 177  
 New York, 63, 132  
 Newspapers, 20, 27, 114

- Niagara Falls, 92  
 Nicholas County, 101  
 Nicholas, George, 13, 17, 25  
 Nicotine, 167  
 Nicotinic acid, 167  
 Night Riders' War, 29  
 Nitrogen, 54, 55  
 Nolin River, 95, 112  
 North, the, 30, 134, 143  
 North Carolina, 132, 133  
 North Dakota, 183  
 Northeast, the, 132  
 Northwest, the, 19, 30  
 Northwest Ordinance, 21  
 Northwest Territory, 13  
 Norway, 34  
 Nurses, 255  
 Nylon, 155, 158, 161, 169  
  
 Occupations, 45  
 Odum, Howard, 3  
 Official freight rates, 186  
 Ohio, 28, 42, 52, 91, 92  
 Ohio County, 82, 84  
 Ohio Land Company, the, 8  
 Ohio River, 8, 15, 18, 23, 70, 84, 90,  
     91, 94, 132, 134, 139, 141, 171,  
     182, 190, 191, 203, 295  
 Oil, 85, 86, 101, 163, 291  
 Oil, fuel, 157  
 Oil shale, 79, 87, 158, 165, 291  
 Oklahoma, 86, 133  
 Old Age Assistance, 4, 268, 277  
 Olive Hill, 89  
 Omaha, 137  
 Ordovician limestones, 77  
 Ores, 92  
 Organic matter, 54  
 Ormsby Village, 274  
 Orphanage, denominational, 270  
 Orthopedic care, 261  
 Otter Creek conferences, 114  
 Outdoor living, 103, 124, 129  
     *See* Wildlife  
 Outer Bluegrass, 36, 41  
 Overton, Samuel, 20  
  
 Owen County, 89, 177  
 Owensboro, 85, 87, 183  
 Owingsville, 92  
 Owsley County, 177  
  
 Packet-boats, 110  
 Paducah, 60, 70, 94, 111, 177, 182  
 Paint Creek, 85  
 Paper, manufacture of, 132, 168  
 Parachutes, 115, 155  
 Pardon, of criminals, 275  
 Parks, 124  
     National, 99  
     roadside, 71  
     State, 98, 112, 119, 121, 122, 128,  
     293  
 Parliament, 155  
 Parole (and probation), 275  
 Pastures, 54, 58, 61, 62, 64  
 Patent laws, 146  
 Pauper Idiot Law, 267  
 Peaches, 60  
 Pearl Harbor, 155  
 Penal institutions, 274, 275  
 Pendleton County, 36  
 Penitentiary, State, 274  
 Penn, Shadrach, 20  
 Penn's settlement, 150  
 Pennsylvania, 79, 122, 126, 132, 134  
 Pennyroyal, 36, 40, 88  
 Perfumes, 155  
 Perry County, 79, 81  
 Personnel, 212  
     government, 208, 210, 213, 297  
     mental hospitals, 263, 264  
     parole, 275  
     scientific, 118  
     wartime shortage, 202, 219  
     welfare, 213, 278  
     *See* Leadership  
 Pests, 114, 115  
 Petroleum, 79, 85, 87, 154, 161ff., 291  
 Phenothiazine, 62  
 Philadelphia, 137, 150  
 Philippines, the, 168  
 Phosphate, 54

- Phosphorous, 54, 55  
 Pike County, 79, 81  
 Pilot plant, 158, 159  
 Pine Mountain, 87, 97, 98  
 Pineville, 97, 177, 178  
 Pinnacle, the, 97  
 Pipe lines, 183, 295  
 Pittsburgh, 8, 137, 156, 171  
 Planning, 1, 2, 6, 149, 272, 281, 293, 296  
 Plant breeding, 60, 74  
 Plant life, aquatic, 113ff.  
 Plant nutrients, 54  
 Plantations, 23  
 Plants, chemical, 155, 160  
 Plants, native, 104, 293  
 Plants, synthetic rubber, 162  
 Plastics, 155, 158, 161-168, 294  
 Policing, 120, 204  
 Policy-making state, 221  
 Politics, 25, 26, 31, 32, 199, 288  
   *See* Government  
 Poll taxes, 199  
 Pollution, atmospheric, 156  
 Pollution, stream, 110  
 Ponds, 64, 293  
 Popular government, 198, 288  
 Population  
   ages of, 34-39  
   and educational need, 226  
   and resources, 14, 34, 35  
   density of, 39, 228  
   distribution of, 50  
   farm, 34  
   growth of, 18, 28, 35, 36, 39, 132  
   in Eastern Kentucky, 14  
   in forested areas, 74  
   migration, 18, 35, 41, 111  
   *See* Migration  
   nonfarm, 42  
   occupations of, 35  
   policy, 40  
   pressure, 37, 39, 51, 75  
   race *See* Negroes  
   rural, 34  
   Population—Continued  
     size of, 34, 35, 37  
     urban, 34, 103  
 Pork, 65  
 Ports, 194  
 Potash, 54, 55  
 Potassium, 55  
 Potatoes, Irish, 60  
 Potteries, 132  
 Poultry, 64, 65  
 Poverty, 268  
 Powder mills, 132  
 Powell County, 98, 177  
 Powell River, 97  
 Power, *See* Water power  
 Prentice, George D., 20, 27  
 Preserves, game, 118, 121  
 Press, the, 19, 288  
 Preston Ore Banks, 92  
 Printing House for the Blind, American, 260  
 Probation and Parole, 275  
 Production  
   concentration of, 135  
   factors of, 143, 144  
   per capita, 142  
 Products  
   new, 150  
   value of, 287  
 Professional Advisory Committee, 262  
 Progress, handicaps to, 288  
 Prohibition, 32  
 Psychiatric care, 262, 263, 265  
 Public administration, 221  
 Public assistance, 260, 268, 269, 276  
   *See* Aid; Public welfare  
 Public domain, 121  
 Public health, 4, 156, 255, 256, 299  
   *See* Health; State Department  
 Public rights, 121  
 Public Roads Administration, 179  
 Purchase Subregion, the, 8, 36, 40, 41, 60  
 Quail, 120  
 Queen Elizabeth, 155

- Racing stock, 63, 130  
 Ragland, oil and gas pools, 85  
 Railroads, 30, 84, 134, 155, 160, 172,  
     174-177, 187, 189, 295  
     *See* Freight rates  
 Rainfall, 52, 53, 105  
 Raw materials, 131, 139, 150, 164,  
     191, 293, 294  
 Rayon, 142, 161  
 Reconstruction, 24, 68, 70, 76, 110,  
     113, 122, 205  
 Red River, 92, 116  
 Reelfoot Lake, 100  
 Reemployment, 126  
 Refrigeration, 64, 165  
 Regional specialization, 147  
 Rehabilitation, postwar, 129  
 Relief, 270, 300  
     *See* Aid, Public Assistance, Public  
         Welfare  
 Religious persecution, 150  
 Reorganization act, 32, 208  
 Reports, administrative, 217  
     *See* Audit  
 Republicans, 17, 31  
 Research, 67, 74, 149, 169, 201, 291  
 Reservoir, 93, 95  
 Resources, 6, 79, 116, 121, 126, 154,  
     280, 284  
 Revenue  
     *See* Tax  
 Ribe, A. J., 187  
 Richmond, 15, 260  
 Rivers, 106, 110, 162, 182  
 Roads  
     *See* Highways  
 Roadside plantings, 104  
 Roberts, Samuel J., 20  
 Robertson County, 177  
 Rock Asphalt, 87, 154, 164, 292  
 "Rock houses," 99  
 Rock phosphate, 90, 154  
 Rock wool, 89, 165, 292  
 Rockcastle conglomerate, 98  
 Rockcastle County, 90  
 Rockcastle freestone, 90  
 Rocks, 77, 79, 82, 85  
 Rolling Fork Creek, 112  
 Rope, 132, 136  
 Rose Run mines, 92  
 Rotary Club, 261  
 Rotation of crops, 55, 75, 290  
 Rough River, 112  
 Rowan County freestone, 90  
 Rowan, John, 25  
 Rubber, 158, 161, 162  
 Running water, 48  
 Rural community, 5  
 Rural life, 299  
 Rural science, 123  
 Russell County, 95, 176  
 Russell Fork, 95  
 Russellville, 19  
 Salary limitation, 197, 230  
 Salt, 85, 91, 132  
 Sanatoria, 298  
 Sand, 79, 86, 96, 154, 292  
 Sandstone, 77, 85, 91, 121  
 Sanitation, 110, 121  
 Scenery, 68, 97, 115, 116, 127  
 Schools  
     *See* Education  
 Scout organization, 250  
 Sea-floors, 77  
 Seasonal industries, 152  
 Seed crops, 60  
 Seeding, 289  
 Separation conventions, 15  
 Settlement, 9, 11, 36  
 Sewage problem, 110  
 Shade trees, 103  
 Shaft mining, 84  
 Shale, 77, 85, 86, 89  
 Share cropping, 38  
 Sheep, 61, 62, 64, 76, 290  
 Shelby, Isaac, 25  
 Shipbuilding, 133  
 Shipyards, 155  
 Shrine hospital, 260  
 Simpson County, 183  
 Sinks, 177

- Skaggs, Henry, 9  
 Sky Bridge, 99  
 Slade, 98  
 Slate Creek, 92  
 Slavery, 13, 16, 17, 23, 30, 53, 134  
 Sloan Experiment, the, 241  
 Smith-Hughes Act, 242  
 Smog, 156  
 Smoke nuisance, 155ff.  
 Smokeless fuel, 156, 160, 163, 169, 294  
 Smoky Fork, 99  
 Social planning, 300  
   *See* Planning  
 Social Security, 207, 260, 269, 299, 300  
 Social Security Act, 213, 269, 270, 272  
 Social Security Board, 214  
 Social Workers, 259, 278  
 Sodded waterways, 75, 290  
 Soil, 52, 53, 54, 61, 63, 68, 75, 130, 289  
   *See* Conservation  
 Soldier, 87  
 Songbirds, 115  
 South, the, 3, 24, 132, 133, 134, 143, 144, 171, 172, 289  
 South Carolina, 133  
 South Dakota, 183  
 Southdowns, 76  
 Southeastern counties, 77, 82  
 Southeastern Kentucky, 87  
 Southern freight rates, 186  
 Southern Governors' Rate Case, the, 189  
 Southern industry, 133  
 Southern Railroad, the, 177  
 Southwest, the, 183  
 Soybeans, 59, 167  
 Spanish influence, 17  
 Spawning grounds, 118  
 Special interest groups, 199  
 Specialization, 172, 173  
 Sphalerite, 88  
 Spinning machines, 132  
 Sportsmen, 113, 125, 292  
   *See* Wildlife  
 St. Asaph's, 10  
 St. Louis, 156, 177, 183  
 Saint Peter sandstone, 91  
 Stalactites, 100  
 Stalagmites, 100  
 Standard of living, 14, 37, 51, 67, 142, 145, 300  
 Standardbred horses, 76  
 State of Kentucky  
   Board of Education, 229, 230  
   Commissioner of Health, 212, 259  
   Commissioner of Revenue, 203, 212  
   Commissioner of Welfare, 259  
   Department of Education, 216, 230, 231, 232, 250, 261, 297  
   Department of Finance, 216, 218  
   Department of Health, 169, 256, 257, 276  
   Department of Revenue, 201, 215, 216  
   Department of Welfare, 260, 261, 267, 268, 274, 275, 276  
   Division of Conservation, 119  
   Division of Forestry, 119  
   Division of Game and Fish, 119  
   Highway Department, 201  
   Industrial Commission, need for, 149  
   Institution for the Feeble-minded, 253  
   Legislature, 158  
   Library, 249  
   operating expenses, 204  
   Planning Board, 95, 111, 117, 149, 200, 250  
   regulation, 200  
   School for the Blind, 259  
   Superintendent of Public Instruction, 230, 231, 297  
   Treasurer, 205  
 State War Chest, 270  
 Statutes Revision Commission, 209  
 Steamboat, 98, 171  
 Steampower, 84



- Steel, 134, 137, 155, 159, 165  
 Stem-family, 47  
 Stocks, 153  
 Stokers, 157  
 Stoves, new types, 157  
 Strata, 79, 88  
     *See* Rocks  
 Stratigraphic traps, 86  
 Strawberries, 60  
 Stream erosion, subterranean, 100  
 Stream management, 116, 293  
 Stream piracy, 97  
 Stream utilization, 105, 106, 107, 111,  
     112, 293  
 Streams, 77, 79, 103, 105, 112, 113,  
     119  
 Strip cropping, 55, 75, 290  
 Strip mining, 84  
 Structure, geological, 77, 79, 86  
 Subsoil, 69  
 Suffrage, 16  
 Summit, 90  
 Sun, energy of, 113, 130  
 Sunday Schools, 49  
 Swamps, 77  
 Swimming, 70  
 Sycamore Shoals Treaty, 10  
  
 Tanker Service, 183  
 Tanneries, 132  
 Tapering Principle, 186  
 Tariff, Protective, 146  
 Tarry residues, 159  
 Tax, 16, 146, 201-203, 296  
     administration, 202, 215  
     assessment, 202, 215  
     gasoline, 178, 181, 195  
     income, 32, 201, 203  
     inheritance, 201, 202  
     licenses, 120, 151  
     motor vehicle, 178, 181, 195  
     progressive, 202  
     property, 72, 178, 201-203  
     sales, 32, 201, 203  
 Taylor County, 176  
 Taylor, W. S., 31  
  
 Teachers, 225, 234-236, 240  
     *See* Education; Personnel  
 Tenancy, 28, 53, 65, 66, 290  
 Tennessee, 9, 55, 95, 97, 133, 181, 182  
 Tennessee River, 93, 107, 182, 295  
 Tennessee Valley Authority, 93, 96,  
     182  
 Terminals, 194  
 Terraces, 55, 75, 290  
 Texas, 86, 133, 183  
 Third-party, 29  
 Thirteenth Amendment, 23, 27, 28, 30  
 Thoroughbred horses, 76  
 Tile, 89  
 Tilth, 54  
 Timber, 14, 29, 68, 69, 71, 73, 74,  
     126, 128, 154, 168, 291  
     *See* Forests  
 Tip Top, 91  
 Tobacco, 23, 28, 29, 51ff., 67, 130,  
     136, 142, 166ff., 191  
 Toll bridges, 181  
 Topography, 52, 76, 105, 115  
 Topsoil, 69  
 Tourists, 71, 127, 293  
 Towns, 18, 27, 139  
     *See* Cities  
 Trachoma hospital, 259  
 Trade, 29, 46, 147  
 Trade Associations, 149  
 Traffic surveys, 179  
 Trails, 128  
 Transportation, 14, 28, 29, 34, 46,  
     131, 135, 164, 171-195  
 Transylvania College, 224, 225  
 Transylvania Company, 10, 12  
 Transylvania University, 253  
 Trapping, 127  
 Travertine, 100  
 Treaty of Ghent, 25  
 Treaty of Paris, 9  
 Trees, 74, 104, 123  
     *See* Forests: Wildlife  
 Trimble County, 177  
 Troublesome Creek, 112  
 Trucking regulations, 193-195

- Tuberculosis, 254, 255, 299  
 Tug River, 177  
 Turbogenerator, 92  
 Turkeys, 65  
 Turpentine, 168  
 Tuskegee, 166  
 Twin Chimney, 89  
 Tygarts Creek, 99, 100  
 Tyrone, 94
- Underground Railroad, 23  
 Unemployment, 47, 271, 272  
 Unemployment Compensation, 4, 271  
 Union Army, 27, 39, 82, 84, 85  
 United States  
   Bureau of Mines, 169  
   Department of Agriculture, 167, 169  
   Employment Service, 271  
   Senate, 26  
 University of Kentucky, 22, 95, 157, 158, 200, 201, 224, 249, 250  
 Upper Cumberland River, 112  
 Urban growth, 38  
 Urbanization, 5  
 Utility lines, 104  
 Utopias, 174
- Vacation, 128  
 Valleys, 106  
 Vegetables, 60  
 Vegetation, 105, 116  
 Vein minerals, 77, 154  
 Veneers, 69  
 Vincennes, 11  
 Virginia, 5, 9, 12, 13, 15, 16, 23, 24, 95, 97, 132, 133, 181  
 Vitamin A, 63  
 Vocational education, 152, 242, 243, 244, 250, 260
- Wages, 136, 152, 287  
 Walker, Dr. Thomas, 8, 97  
 Wallace, 90  
 Wallace, Caleb, 13, 25
- War Between the States  
   *See* Civil War  
 War contracts, 141  
 War of 1812, 19, 25  
 War Production Board, 158  
 Warhawk Party, 25  
 Warrant Debt, 205  
 Warren County, 87  
 Washington, 183  
 Washington, George, 17  
 Wasteland, 130, 292  
 Water  
   power, 55, 79, 92-96, 133, 293  
   rights, 107, 121  
   supply, 64, 75, 76, 107, 110, 116, 119, 162  
   table, 70, 112, 162  
   transportation, 134, 182, 184, 194  
   underground supply, 68, 70, 162  
 Waterfalls, petrified, 100  
 Waters, 91, 106, 112, 113, 130, 164  
 Watterson, Marse Henry, 20, 27  
 Wayne County, 85, 100, 176  
 Wealth, 77  
 Welfare, public, 4, 24, 131, 142, 204, 253-279  
 Wells, 64  
 West Virginia, 28, 79, 91, 134, 183  
 Western freight rates, 186  
 Western Kentucky, 84, 85, 92, 183  
 Western Kentucky Coal Field, 29, 36, 41, 42  
 Western Kentucky Coal Field Margin, 36  
 Western State Teachers College, 22, 224  
 Westfield, 150  
 Wheat flour, 167  
 Whig, 26  
 Whip manufacture, 150  
 Whiskey, 130, 171  
 Whitley County, 81, 120  
 Wildlife, 76, 102-130, 292, 293  
   areas, 119, 122, 124  
   management, 117, 118  
   species, 122, 123

## INDEX

323

- Wilderness Trail, 97
- Winchester, 177
- Winter cover crops, 61, 290
- Winter oats, 53
- Wisconsin, 52
- Wolf County, 177
- Wolf Creek Dam, 95, 182
- Women's Organizations, 114
- Woodburn limestone, 91
- Woodford County, 89, 90
- Woodlot, 123, 293
- Woodson, Urey, 20
- Wood-working industries, 294
- Wool, 62
- Wordsworth, William, 70
- World War I, 14, 89
- World War II, 2, 55, 37, 79, 141
- Wyoming, 184, 192
- X Cave, 99
- Yamacraw, 95
- Yellow Creek, 97
- Yellow poplar, 71
- Yorktown, 12
- Y. M. C. A., 251
- Y. W. C. A., 251
- Youngstown-Pittsburgh, 135
- Youth, 35, 42, 44, 251
- Zinc, 88
- Zoning regulations, 151