

WORKING GIRLS
IN EVENING SCHOOLS

VAN KLEECK

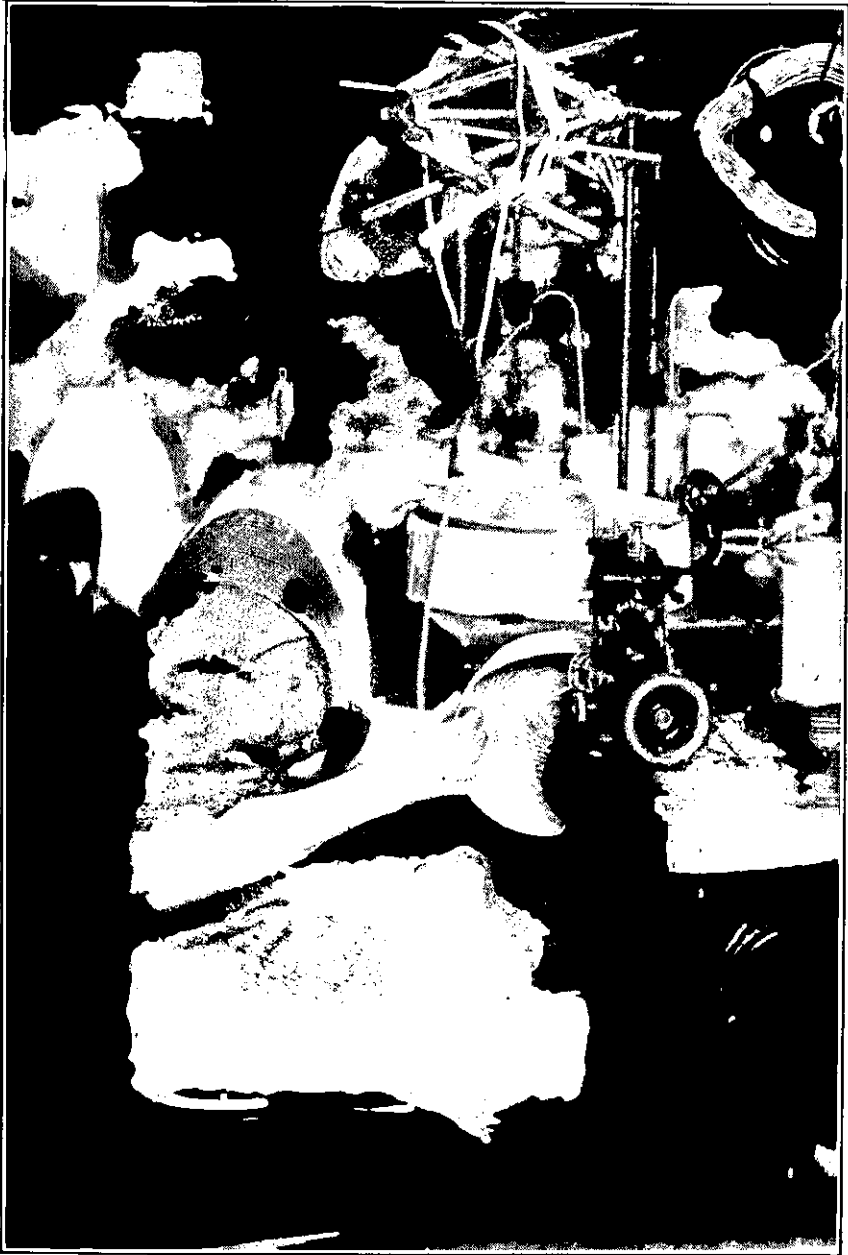


Class — N 5 V 3 —

Book N 5 V 3

Copyright N^o _____

COPYRIGHT DEPOSIT.



A MILLINER LEARNING STRAW SEWING

RUSSELL SAGE
FOUNDATION

WORKING GIRLS
IN EVENING SCHOOLS

A STATISTICAL STUDY

BY

MARY VAN KLEECK

SECRETARY COMMITTEE ON WOMEN'S WORK
RUSSELL SAGE FOUNDATION

NEW YORK
SURVEY ASSOCIATES, INC.
MCMXIV

Copyright, 1914, by
THE RUSSELL SAGE FOUNDATION



THE TROW PRESS
NEW YORK

TABLE OF CONTENTS

| | PAGE |
|--|------|
| LIST OF ILLUSTRATIONS | v |
| LIST OF TABLES | vii |
| Introduction | 1 |
| I. Evening Schools and the Girls Who Attend Them | 10 |
| II. Occupations of Girls Who Go to Night School . . | 38 |
| III. Daily Hours of Labor | 61 |
| IV. Schooling of Wage-earning Girls | 83 |
| V. Relation of the Evening Schools to Vocational Training | 115 |
| VI. Irregular Attendance in Evening Classes . . . | 142 |
| VII. Some Problems of Industrial Education . . . | 168 |

APPENDICES

| | |
|--|-----|
| I. Tables | 187 |
| II. Memorandum Regarding a System of Evening School Records | 212 |
| III. Investigation of Evening School Pupils in Phila- delphia | 228 |
| INDEX | 233 |

LIST OF ILLUSTRATIONS

Photographs by Lewis W. Hine

| | FACING PAGE |
|--|---------------------|
| A Milliner Learning Straw Sewing | <i>Frontispiece</i> |
| Learning to Make Their Own Hats | 14 |
| A Class in Home Dressmaking | 14 |
| Studying "Common Branches" | 30 |
| Cooking Class | 30 |
| Learning Bonnaz Embroidery | 48 |
| Stenographers Practicing Speed | 72 |
| Recreation for Juniors in Evening School | 72 |
| Sewing Class | 92 |
| In The Pattern Drafting Class | 110 |
| Pattern Drafting | 120 |
| Waist Draping for Dressmakers | 120 |
| Machine Operating | 132 |
| Teacher Instructing in Straw Sewing | 132 |
| A Button Sewer by Day | 148 |
| Draping a Chiffon Waist | 160 |
| Sews Linings in Hat Factory by Day | 174 |

LIST OF TABLES

| TABLE | PAGE |
|--|------|
| 1. Public evening schools included in the investigation, registration, and average attendance of women in these schools during the regular term, and number of women for whom records were tabulated, by location and type of school | 7 |
| 2. Nativity of women attending public evening schools | 21 |
| 3. Nativity of fathers of women attending public evening schools | 22 |
| 4. Ages of women attending public evening schools | 29 |
| 5. Reasons given by 271 women for enrolling in public evening schools | 31 |
| 6. Daily occupations of women attending public evening schools, by principal occupational groups | 35 |
| 7. Occupations of women attending public evening schools, employed in manufacturing and mechanical pursuits, by main groups of occupations | 49 |
| 8. Occupations of women attending public evening schools and employed in trade and transportation | 51 |
| 9. Principal occupations in manufacturing and mechanical pursuits, ranked according to number of women employed, for women attending public evening schools, 1910-1911, and for all women in New York City in 1900 | 55 |
| 10. Normal daily hours of work of women attending public evening schools, employed in manufacturing and mechanical pursuits and in trade and transportation | 68 |

LIST OF TABLES

| TABLE | PAGE |
|--|------|
| 11. Hours of beginning and leaving work in manufacturing and mechanical pursuits and in trade and transportation, for women attending public evening schools | 70 |
| 12. Normal daily hours of work for girls under 16 years of age attending public evening schools, employed in selected occupations in trade and transportation | 75 |
| 13. Normal daily hours of work of girls under 16 years of age attending public evening schools, employed in selected occupations in manufacturing and mechanical pursuits | 77 |
| 14. Day schools previously attended at any time by women attending public evening schools, by principal occupational groups | 86 |
| 15. Last day school attended by women attending public evening schools, by principal occupational groups | 89 |
| 16. Proportion of women attending public evening schools, whose only previous day school attendance was in New York public schools, by principal occupational groups | 90 |
| 17. Grade at leaving school for women attending public evening schools, who last attended day school in a New York public school, by principal occupational groups | 94 |
| 18. Grade at leaving school for women attending public evening schools, who last attended day school in a New York public school, employed in five selected manufacturing pursuits | 96 |
| 19. Progress made in elementary school by women attending public evening schools, who had attended New York public schools only, by principal occupational groups | 99 |
| 20. Years of attendance at day school for women attending public evening schools, by principal occupational groups | 101 |

LIST OF TABLES

| TABLE | PAGE |
|---|------|
| 21. Age at leaving day school of women attending public evening schools, by principal occupational groups | 102 |
| 22. Reasons for leaving day school before the age of sixteen, for 108 girls attending public evening schools | 109 |
| 23. Daily occupations of women attending evening classes in the Manhattan Trade School by classes, New York City, 1913 | 130 |
| 24. Ages of women attending evening classes in the Manhattan Trade School, New York City, 1913 | 133 |
| 25. Average weekly wages, by ages, of women attending evening classes in the Manhattan Trade School, New York City, 1913 | 134 |
| 26. Women on register in the year, and attendance on first school night of each month, in 15 public elementary evening schools | 151 |
| 27. Months in which women attending public evening schools dropped out | 154 |
| 28. Reasons given by 86 women for leaving public evening schools | 157 |
| 29. Evenings in which schools were in session each month, and average number of evenings of attendance per woman, for 1,233 women attending evening high schools and 2,935 women attending evening elementary schools | 163 |

APPENDIX I

| | |
|---|-----|
| A. Women attending public evening schools, who were included in this investigation, and women for whom information is presented in the different tables | 187 |
| B. Public evening schools included in the investigation, registration, and average attendance of women in these schools during the regular term, and number of women for whom records were tabulated by location and type of school | 190 |

LIST OF TABLES

| TABLE | PAGE |
|---|------|
| C. Nativity of fathers of women attending public evening schools, for Manhattan, the Bronx, Brooklyn, and Long Island City, and for each school in Manhattan and the Bronx | 192 |
| D. Industries of women attending public evening schools employed in manufacturing and mechanical pursuits, by type of school, for Manhattan and the Bronx, and for Brooklyn and Long Island City . | 193 |
| E. Length of noon recess for women attending public evening schools employed in manufacturing and mechanical pursuits and in trade and transportation | 196 |
| F. Normal daily hours of work of women attending public evening schools and employed in manufacturing and mechanical pursuits, by main groups of occupations | 197 |
| G. Ages of women attending public evening schools, by principal occupational groups and by selected occupations | 198 |
| H. Age at leaving day school of women attending public evening schools, employed in manufacturing and mechanical pursuits, by main groups of occupations | 199 |
| I. Years of attendance at high school for women attending public evening schools, who last attended day school in New York public high schools, by principal occupational groups | 200 |
| J. Ages, nativity, schooling, and hours of employment by selected occupations in trade and transportation and in manufacturing and mechanical pursuits, of women attending public evening schools . | 201 |
| K. Grade at leaving school, by main groups of occupations in manufacturing and mechanical pursuits and by selected occupations for women attending public evening schools, who last attended day school in a New York public school | 207 |

LIST OF TABLES

| TABLE | PAGE |
|--|------|
| L. Months in which 1,127 women attending public evening high schools dropped out, by principal occupational groups and by ages | 209 |
| M. Months in which 973 women attending four public evening elementary schools dropped out, by principal occupational groups and by ages, Manhattan Borough | 210 |
| N. Months in which 1,993 women attending 13 public evening elementary schools dropped out, by principal occupational groups and by ages, Manhattan Borough | 211 |