

Dhansajayrao Gadgil Library



GIPE-PUNE-013056

No. 600

Copyright Reserved

DEPARTMENT OF OVERSEAS TRADE

Economic and Trade Conditions
in the

UNITED STATES OF AMERICA

DECEMBER, 1934

REPORT

By H. O. CHALKLEY, C.M.G., C.B.E.

Commercial Counsellor to His Majesty's Embassy at Washington, D.C.

(The previous Report was dated February, 1933)

Gokhale Institute of Politics
and Economics, Poona 4.

X.73
94
13056



LONDON

PRINTED AND PUBLISHED BY HIS MAJESTY'S STATIONERY OFFICE

To be purchased directly from H.M. STATIONERY OFFICE at the following addresses:
Adastral House, Kingsway, London, W.C.2; 120 George Street, Edinburgh 2;
York Street, Manchester 1; 1 St. Andrew's Crescent, Cardiff;
80 Chichester Street, Belfast;
or through any Bookseller

1935

Price 5s. od. Net.

54-600

DEPARTMENT OF OVERSEAS TRADE

COMMERCIAL REPRESENTATION ABROAD.

To foster British overseas trade, the Department controls the following services of Commercial Intelligence Officers:—

1. IN THE EMPIRE.

The Trade Commissioner and Imperial Trade Correspondent Services.

At the present time there are 16 Trade Commissioners' offices. These are situated, four in Canada (Montreal, Toronto, Vancouver, Winnipeg); two each in South Africa (Capetown, Johannesburg), Australia (Sydney, Melbourne), India (Calcutta and Bombay—to cover also Ceylon), and British West Indies (Trinidad, Jamaica); and one each in New Zealand (Wellington), Irish Free State (Dublin), Malaya (Singapore) and British East Africa, (Nairobi).

The Trade Commissioners have the assistance of Imperial Trade Correspondents at a number of important centres.

There are also Imperial Trade Correspondents in those parts of the Empire to which Trade Commissioners have not been appointed.

2. IN FOREIGN COUNTRIES.

(a) *The Commercial Diplomatic Service attached to the British Diplomatic Missions.*

There are 38 Commercial Diplomatic posts situated in all the most important foreign markets of the world. The members of the Commercial Diplomatic Service are styled "Commercial Counsellors" in the highest grade, and "Commercial Secretaries" in the three lower grades. They are members of the staff of the British Embassy or Legation in which they serve.

The Commercial Diplomatic Officer has general supervision over the commercial work of the consular officers in his area, and with the co-operation of these two services, a complete network of Government commercial representatives is thrown over foreign countries.

The Department is represented in the United States of America by Mr. H. O. Chalkley, C.M.G., C.B.E., Commercial Counsellor, and Major H. F. Heywood, M.C., Commercial Secretary, to H.M. Embassy at Washington.

(b) *The British Consular Service.*

Particular attention has been given to the commercial side of consular work since the re-organisation of the service. In certain countries where no Commercial Diplomatic Officer is stationed the senior Consular Officer undertakes duties of a similar character.

Further information regarding the above services can be obtained on application to the Department of Overseas Trade, 35, Old Queen Street, London, S.W.1.

Members of United Kingdom firms are urged to call upon the Department's representative abroad when they visit an overseas country. It is also important that they should make a point of their representatives abroad keeping in close touch with the Department's officers.

NOTE.

It should be understood that the views expressed in annual reports are the views of the officers themselves, and are not necessarily in all respects those of the Department.

TABLE OF CONTENTS

	<i>Page</i>
COMMERCIAL SUMMARY	vii
HINTS FOR COMMERCIAL VISITORS	viii
I. INTRODUCTION	1
II. FINANCE.	
Basic Changes in Finance and the Currency	15
The Budget	17
Public Debt	19
Reconstruction Finance Corporation	22
Taxation	24
State and Local Expenditure and Indebtedness	25
Currency	26
Gold Movements	27
Silver	29
Balance of International Payments	30
American Investments Abroad	32
Banking and Credit	34
Commercial Failures	37
Commodity Prices	37
III. TRADE.	
Domestic Trade Conditions	38
Changes Affecting Foreign Trade	39
Foreign Trade Review	41
Export Trade	43
Principal Classes of Exports	46
Import Trade	53
Trade with the United Kingdom	55
Government Credit Facilities for Foreign Trade	58
Foreign Trade Zones	60
Tariff and Tariff Policy	60
Tariff Changes	60
Tariff Provisions of the National Industrial Recovery Act	60
Compensating Import Taxes under the Agricultural Adjustment Act	61
Tariff Commission	62
Administrative and Sanitary Restrictions	62
Marking Regulations	62
Anti-Dumping Regulations	63
Reciprocal Trade Agreements	63
Most-Favoured-Nation Policy	64
IV. AGRICULTURE.	
Changes Affecting Agriculture	65
Agricultural Adjustment	68
Cotton	69
Wheat	70
Maize	71
Pigs	71
Tobacco	72
Sugar	72

IV. AGRICULTURE—continued.	Page
Production	73
Crops	73
Livestock	74
Exports	75
Finance of Agriculture	79
Capital Account	79
Farm Prices	79
Farm Income	80
Mortgage Debts	81
Credit	81
V. INDUSTRY.	
Changes Affecting Industry	82
Industrial Production	83
Textiles	85
Iron and Steel	88
Automobile Industry	89
Machinery	90
Electrical Plant and Equipment	90
Chemical and Related Products	91
Petroleum	92
Coal	93
Copper	94
Timber	95
Paper	95
Leather and Shoes	96
Rubber Manufactures	97
Cinematograph Industry	97
Building and Construction	97
New Industrial Products and Processes	99
Branch Factories Abroad	101
VI. TRANSPORTATION AND COMMUNICATIONS.	
Changes Affecting Transportation	102
Shipping	103
Investigations	103
Subsidies	104
Shipping Code	105
Labour Troubles	105
St. Lawrence-Great Lakes Waterway	105
Railways	106
Roads and Road Transport	108
Commercial Aviation	109
Airways	109
Air Transportation	109
Aircraft-building Industry	110
Communications	111
VII. LABOUR AND SOCIAL QUESTIONS.	
Changes Affecting Labour	112
Employment	114
Hours of Labour	116
Wages	116
Labour Organisation and Collective Bargaining	117
Labour Disputes	119
Unemployment	120
Unemployment Insurance	121

VII. LABOUR AND SOCIAL QUESTIONS— <i>continued.</i>		Page
Unemployment Relief	122
Work Relief	123
Direct Relief	125
Relief in Kind	125
Public Works and Housing	128
Cost of Living	129
Immigration	129
Population	130
VIII. RECOVERY LEGISLATION AND ADMINISTRATION.		
Legislation	130
Currency, Banking and Finance	131
Agriculture	132
Industry	133
Labour	133
Public Works	134
Relief	134
Transportation and Communications	134
Foreign Trade and Tariffs	135
Administration	135
APPENDICES.		
I. Indices of Recovery	138
II. Emergency Expenditures on Recovery	140
III. Receipts and Expenditure of the United States Government	142
IV. Foreign Trade Statistics	143
(a) United States Exports to and Imports from Leading Countries	143
(b) Principal Exports	144
(c) Principal Exports to the United Kingdom	146
(d) Principal Exports of the United States	148
(e) Principal Imports from the United Kingdom	149
(f) Imports of Alcoholic Beverages from the United Kingdom...	151
(g) Board of Trade Statistics of Exports of Principal Commodities to the United States	152
(h) Board of Trade Statistics of Imports of Principal Commodities from the United States	154
V. Statistics of Unemployment	156
VI. Prices	157
(a) Wholesale Commodity	157
(b) Agricultural	157
(c) Ratio of prices received by farmers to prices paid for commodities bought	157
VII. Business Indexes	158
VIII. Bibliography	159

ANNEXES.

I. Report on the Market for the principal United Kingdom Exports to the United States (by the Trade Department of His Majesty's Consulate-General at New York)	160
II. Report on Economic and Trade Conditions in the Pacific Coast Region (by His Majesty's Consuls at San Francisco, Seattle and Los Angeles)	172

COMMERCIAL SUMMARY

Area.—The Continental United States have an area of 2,973,776 square miles (about 34 times the size of Great Britain).

Population.—122,775,045 (Census of 1930). The cities with a population of over half a million are New York, Chicago, Philadelphia, Detroit, Los Angeles, Cleveland, Baltimore, St. Louis, Boston, Pittsburgh, New Orleans, San Francisco, Milwaukee and Buffalo. In all there are 93 cities in the country of a population exceeding 100,000.

Monetary System.—The basis of the currency is the gold dollar (\$) of 15-5/21 grains of gold, nine-tenths fine, at which weight it was fixed by a Proclamation dated the 31st January, 1934. This is 59-06 plus per cent. of the former weight of 25-8 grains, or a reduction of a little over 40 per cent. Under the Gold Reserve Act of 1934 gold is no longer coined, the circulating medium for sums of one dollar and above being dollar bills in denominations of \$1, \$2, \$5, \$10, \$20, \$50, \$100 and upwards. Silver dollars are in circulation, particularly in the Western States. The minor coins in general use are the half dollar (50 cents), the 25 cent piece (quarter), the 10 cent piece (dime), the 5 cent piece (nickel) and the 1 cent piece (called a penny). The gold value of the dollar may be altered by Proclamation at any time within the upper limit of a 40 per cent. and the lower limit of a 50 per cent. reduction of the old weight of 25-8 grains.

Weights and Measures.—British weights and measures are usually employed, but the old Winchester gallon and bushel are used instead of the Imperial standards. They are:—

American Gallon .83267 Imperial gallon.

American Bushel .6689 Imperial bushel.

The cental of 100 lbs., is used instead of the hundredweight (cwt.) of 112 lbs., and tons are spoken of as "short" (2,000 lbs.) or "long" (2,240 lbs.).

Rate of Exchange.—The sight rates in 1934 were:—

High (week ended April 7th) \$5-18-7/8.

Low (week ended February 3rd) \$4-87.

Week ended December 31st \$4-94.

Letter and Parcel Postage.—**Air Mail.**—Letters to the United States, including Hawaii but not the Panama Zone or Island dependencies, from the United Kingdom cost 1½d. for 1 oz. and 1d. for each succeeding ounce or fraction. Printed papers, catalogues, etc., commercial papers, legal documents, etc., samples, patterns (minimum charge for samples, patterns, etc., 1d.), ½d. per 2 oz. Parcels 2s. for the first 3 lb., 3s. 9d. up to 7 lb., 5s. 9d. up to 11 lb., 9s. 9d. up to 22 lb.

Letters to the United Kingdom from the United States cost 5 cents for the first ounce and 3 cents for each additional ounce or fraction.

Air mail rates in United States internal postal traffic are 8 cents for the first ounce and 13 cents for each additional ounce or fraction.

HINTS FOR COMMERCIAL VISITORS TO THE UNITED STATES OF AMERICA

Official Travel Formalities.—No licences or permits are required for commercial travellers. A passport is, of course, necessary, and it must have the visa of a Consular representative of the United States. Application for a visa must be made to the American Consular Officer of the district in which the holder of the passport is usually resident. British commercial visitors should ask for a non-immigrant visa under the existing Treaty of Commerce between Great Britain and the United States. The fee for a visa valid for twelve months is \$10. A head tax is also charged, which, however, is refunded if the visitor leaves the United States within 60 days of entry, provided notice of this intention is given before entry. The head tax is collected by the steamship company issuing the steamer ticket, and applications for refunds are dealt with also by the company.

Steamer Routes and Costs.—Transatlantic services are too well known to need description. The steamship companies also give full information, advice and assistance regarding the formalities mentioned in the foregoing paragraph. Boston, and principally New York, are the chief ports of entry from the East, but the St. Lawrence is also a good route between April and November, Montreal being only 11 hours by rail from New York, 12 hours from Chicago, and 7 hours from Detroit. Steamers arriving in New York dock at piers near the end of West 14th Street, which is about 15 to 20 minutes from the two main railway depots, the Pennsylvania Station for points South and West, and the Grand Central Station for the North and West. An excellent service of taxis meets all steamers, and heavy luggage can be forwarded from the piers to the passenger's final destination.

Customs Formalities, Samples, etc.—Customs declaration forms are available on board. Non-residents need not declare, and may bring in free of duty, wearing apparel, articles of personal adornment, toilet articles, and similar personal effects, without limitations as to value. They must, however, declare all merchandise or articles intended for other persons (e.g. gifts) or for sale. Fifty cigars, or 300 cigarettes, or three pounds of smoking tobacco, when brought in by bona fide adult non-residents, if not for sale, may be passed free of duty and internal revenue tax.

Samples are subject to duty according to the tariff classification in which the articles are included, but if it is intended to take the samples out of the country a bond may be entered into to cover the duty liability pending re-exportation. Samples valued at less than \$500 accompanying a commercial traveller may be entered on his baggage declaration in lieu of formal entry, and examined and passed at the place of arrival in the same manner as passengers' baggage, upon the filing of a bond equal to double the estimated duty or on deposit of cash to the amount of the duty. The articles must be accompanied by a descriptive list. In the case of articles valued at more than \$100, the descriptive list must be certified by an American Consul, or be accompanied by a consular invoice. Models of women's wearing apparel must be marked by means of a cord and seal, and samples of apparel must be likewise marked. If the samples are exported within 6 months, the bond is cancelled or the deposit refunded as the case may be. Advertising literature is subject to duty varying according to the form in which the literature is made up.

Railway and Air Travel in the United States.—Ordinary fares on the railway are at the rate of 3-6/10 cents per mile, but except for very short journeys it is desirable to travel in Pullman cars. The cost of this is not excessive, amounting to, for example, \$1.88 for the 230 miles between New York and Washington. In the case of an extensive tour, a good deal of night travelling is necessary, and British visitors are advised to take both upper and lower berths in a sleeping car (a section) as the upper berth can then be closed up and so greatly improve the comfort of the passenger; the extra cost is not great. On long journeys a private compartment (drawing room) with accommodation for two persons, is a great boon. On the journey from New York

to San Francisco, for example, which occupies four nights, the purchase of a compartment is well worth the extra expenditure, although the minimum of two rail tickets is required in addition to Pullman charges. West of Chicago only one and a half rail tickets are required for a single passenger occupying a compartment. Reservations for Pullman accommodation must be made in advance and can conveniently be done through hotel porters.

Air travel plays an important part in American business life, and British commercial visitors should make free use of it as a means of saving time in the case of longer journeys. The cost is not greatly in excess of rail travel, but it is, of course, important to cut the weight of baggage down to a minimum. Meals are included in air liner fares.

Hotel Accommodation.—In New York, a first-class single room with bath costs about \$5 a day, and stock rooms about \$8 a day, but cheaper accommodation is freely available. Meals on an adequately representative scale will average about \$5 a day. Elsewhere than in New York the cost is somewhat less, and in most cities a satisfactory room can now be had from \$3 to \$5 a day. In comparison with the general level of prices in the United States, meals are reasonable, and \$15 a day should amply cover hotel accommodation, food and small incidentals. The English visitor should remember to refrain from putting his boots and shoes outside the bedroom door to be cleaned; in America one visits a shoe shine parlour for this purpose. Gratuities run about 10 per cent.; a 25 cent piece is the usual single coin tip for messengers, lift boys, porters, etc.

Clothing, Buying Seasons, etc.—No special clothing is necessary, but English visitors are recommended to bring their lightest garments, whether for summer or winter wear. Temperatures of 100° F. are not unusual at the height of summer, and in winter the interior temperature of American houses and office buildings is maintained at a high level. The English visitor should, therefore, bring light-weight suits and underwear, with a heavy great-coat for the winter.

There is no special buying season, but it should be remembered that business executives are less likely to be available to chance visitors between July and September than at other seasons of the year. The weeks immediately preceding Christmas are also, as a rule, times of stagnation.

Legal and public holidays vary considerably in the different States, being fixed by State legislation. No national holidays have been established by Congressional action, but the following are observed as holidays by all States and Territories:—

- New Year's Day—January 1st.
- Washington's Birthday—February 22nd.
- Independence Day—July 4th.
- Labour Day—First Monday in September.
- Thanksgiving Day—Last Thursday in November.
- Christmas Day—December 25th.

There is no Whitsun holiday and no general Easter holiday, although Good Friday is observed as a holiday in certain States. Decoration Day (May 30th), and Lincoln's Birthday (February 12th), are also very generally observed as holidays in Northern and Eastern States. Boxing Day, December 26th, is not a holiday in the United States.

Sailing Permit.—To leave the United States, the foreign visitor requires a permit from the Federal authorities. A declaration regarding income earned in the country is required together with a certificate from the authorities that any internal revenue taxes due have been paid. Visitors can obtain sailing permits at the Custom House in New York, but in cases of difficulty they should approach the American offices of the steamship company with whom their passage has been booked.

Further Information.—British Consular Officers in the United States keep a record of local Hints for the use of British visitors, and commercial travellers are advised to make use of these and other facilities available at His Majesty's Consulates in Boston, New York, Philadelphia, Baltimore, Washington, Savannah, New Orleans, Galveston, St. Louis, Detroit, Chicago, Seattle, San Francisco and Los Angeles.

APPENDIX A.

RANGE OF PRICES OF STAPLE INDIAN COMMODITIES IN THE UNITED KINGDOM DURING THE LAST THREE YEARS.

Commodity.	Unit.	1936-37.			1937-38.			1938-39.		
		Highest.	Lowest.	Difference.	Highest.	Lowest.	Difference.	Highest.	Lowest.	Difference.
		£ s. d.	£ s. d.	£ s. d.	£ s. d.	£ s. d.	£ s. d.	£ s. d.	£ s. d.	£ s. d.
Jute	£ per ton	20 0 0	18 6 0	3 14 0	23 0 0	17 17 6	5 2 6	24 12 6	16 11 3	8 1 3
Castorseed	"	14 15 0	12 0 0	2 15 0	15 0 0	11 17 6	3 2 6	11 15 0	10 10 0	1 5 0
Linseed (Calcutta)	"	15 0 0	12 5 0	2 15 0	15 18 3	13 7 6	2 8 9	13 2 6	11 15 0	1 7 6
Groundnuts	"	16 13 9	13 7 6	3 6 3	16 17 6	9 17 6	6 0 0	11 0 0	9 10 0	1 10 0
Groundnut cake	"	8 12 6	6 6 3	2 6 3	8 10 0	7 12 6	17 6	7 12 6	7 5 0	7 6
Tea Northern average	Pence	15-13	12-05	3-08	17-94	13-59	4-35	16-64	12-56	4-08
Cotton, Fine, M.G. broach	Pence per lb.	6-40	5-09	1-31	6-40	3-78	2-62	4-30	3-56	74
Shellac	Shillings per lb.	62/0	46/0	16/0	60/0	40/0	20/0	52/0	34/0	18/0
Manganese ore (48-50%)	Pence per cwt.	19	12	7	28	14½	13½	20½	14½	6
Wolfram (65%)	Shillings per unit	58/6	25/0	33/6	127/6	54/0	73/6	62/0	37/0	25/0
Chromite (basis 48%)	Shillings per unit	97/6	94/6	3/0	110/0	95/0	15/0	110/0	97/6	12/6

APPENDIX B.

IMPORTS OF STAPLE INDIAN (EXCLUDING BURMA) PRODUCTS INTO THE UNITED KINGDOM FOR THE THREE MONTHS JANUARY TO MARCH 1939.

Commodity.	Unit.	From.	1937	1938	1939
Wheat	'000 cwts.	India	739.9	156.6	—
		Australia	4362.8	7757.9	4169.6
		Canada	8715.1	4636.1	7464.3
		U.S.A.	—	5244.5	6879.7
		Argentine	10045.9	2360.0	4132.8
		TOTAL	25051.0	21787.5	29933.6
Tea	Mill. lbs.	India	47.1	54.4	59.0
		Ceylon	26.3	34.7	33.1
		Dutch East Indies	3.9	9.4	3.9
		TOTAL	88.1	109.5	105.7
Coffee	'000 cwts.	India	18.4	21.9	59.9
		British East Africa	82.0	106.1	136.1
		Costa Rica	116.3	104.2	78.7
		TOTAL	227.0	241.4	291.1
Tobacco, unmanufactured, stripped and unstripped	Mill. lbs.	India	1.0	2.5	2.8
		Canada	5.4	11.1	8.8
		U.S.A.	31.0	69.9	54.6
		Southern Rhodesia3	.2	.9
		TOTAL	39.9	86.1	69.0
Linseed	'000 tons	India	33.1	18.0	60.2
		Argentine	59.9	42.7	15.6
		TOTAL	93.5	61.1	76.3
Linseed, cake and meal	'000 tons	India	11.3	11.4	8.3
		U.S.A.	3.2	3.4	.8
		TOTAL	15.9	15.8	10.2
Groundnuts, decorticated	'000 tons	India	38.7	53.9	61.5
		British West Africa	37.5	52.4	35.9
		TOTAL	76.5	106.3	97.4
Groundnut, cake and meal	'000 tons	India	48.8	57.2	86.1
		Burma	13.1	17.2	22.8
		Other British Countries	1.3	.8	.6
		TOTAL	64.6	75.7	110.3
Castorseed	'000 tons	India	4.1	—	—
		TOTAL	10.3	8.4	6.4
Jute	'000 tons	India	89.6	62.0	66.2
		TOTAL	89.7	62.0	66.3



HULL SHOP, 1938.

APPENDIX B—continued.

Commodity.	Unit.	From.	1937	1938	1939
Jute piece goods ...	Mill. sq. yds.	India	49.3	49.3	49.5
		TOTAL ...	49.5	49.6	50.0
Jute sacks and bags	'000 cwt.	India	286.4	198.2	184.3
		TOTAL ...	320.8	203.4	188.2
Cotton, raw, under 1½ inch and over ½ inch	'000 Centals of 100 lbs.	India	322.8	142.2	145.5
		U.S.A.	1930.8	2212.5	594.3
		Egypt	585.4	613.5	477.4
		TOTAL ...	3426.9	3259.6	1671.4
Cotton, raw, of ½ inch and under	'000 Centals of 100 lbs.	India	509.1	396.1	369.0
		TOTAL ...	544.0	382.0	392.4
Wool, raw, Sheep's and Lamb's wool	Mill. lbs.	India	13.2	6.6	13.2
		Other British Countries6	1.2	.5
		Argentina	39.0	19.5	43.7
		Other Foreign Countries	2.6	1.2	1.3
		TOTAL ...	257.0	246.6	326.3
Carpets, carpeting, floor, rugs, etc., of wool	'000 sq. yds.	India	364.8	449.2	418.4
		Russia	9.0	2.0	6.7
		Belgium	656.3	498.4	226.5
		Turkey	5.4	2.4	.3
		Iran	260.1	114.7	84.2
		TOTAL ...	1512.9	1233.1	928.6
		Coir yarn	'000 cwts.	India	Not shown separately.
		TOTAL ...	average 39.1	75% of total. 41.3	46.7
Coir mats and matting	Value in £'000 (Quantities not shown)	India	178.9	129.0	185.9
		TOTAL ...	181.0	130.6	187.5
Shellac, Seedlac and Sticklac	'000 cwts	India	59.0	36.6	63.8
		TOTAL ...	60.4	37.8	64.8
Goatskins, dry and dry-salted	'000	India	1687.7	1156.9	1401.8
		British West Africa	166.5	219.2	279.7
		South Africa	43.3	92.9	107.7
		Other British Countries	229.7	201.0	378.3
		TOTAL ...	2210.7	1792.1	2281.2
Hides, leather, undressed	'000 cwts.	India	92.9	56.1	81.0
		TOTAL ...	106.8	68.2	99.7
Goatskins, leather, undressed	'000 cwts.	India	14.7	15.7	10.4
		TOTAL ...	16.2	16.2	10.7

APPENDIX B—continued.

Commodity.	Unit.	From.	1937	1938	1939
Sheepskins, leather, undressed	'000 cwts.	India	17.9	15.3	15.8
		TOTAL	28.0	22.0	24.3
Pig iron	'000 tons	India	44.5	66.6	17.1
		TOTAL	56.7	262.3	30.2
Manganese ore ...	'000 tons	India	43.5	63.4	29.3
		Other British Countries	4.7	5.6	2.0
		Foreign Countries ...	13.0	.8	2.5
		TOTAL	61.3	69.8	33.9
Mica	'000 tons	India	Totals	only	shown.
		TOTAL5	1.1	.8
Essential oils ...	'000 lbs.	India	103.4	79.1	37.2
		Other British Countries	277.3	254.2	262.6
		Italy	146.9	160.2	164.9
		U.S.A.	124.0	131.9	120.8
		Other Foreign Countries	591.8	517.8	230.5
		TOTAL	1332.8	1229.1	996.4
Rubber	'000 Centals of 100 lbs.	India	18.4	44.6	31.1
		Burma	8.2	17.6	11.3
		British Malaya ...	228.2	821.8	406.6
		Ceylon	33.4	115.1	62.7
		Other British Countries	19.7	29.3	28.5
		Dutch East Indies ...	61.9	183.3	57.4
		TOTAL	382.4	1229.7	612.8

**IMPORTS OF STAPLE INDIAN PRODUCTS INTO THE UNITED KINGDOM FROM BRITISH INDIA (EXCLUDING BURMA) FOR THE
QUARTERS ENDING THE 31ST MARCH 1937, 1938 AND 1939.
TRADE AND NAVIGATION ACCOUNTS OF THE UNITED KINGDOM IMPORTS IN '000 £.**

From.	Quarter ending 31.3.39.		Quarter ending 31.3.38.		Quarter ending 31.3.37.	
	B. India.	Total. All Countries.	B. India.	Total. All Countries.	B. India.	Total. All Countries.
* GROUP.						
I. FOOD, DRINK AND TOBACCO.						
A. Grain and flour	19.8	15,199.6	113.6	20,517.5	445.0	22,069.7
B. Feeding stuffs for animals	673.4	2,800.8	564.5	3,046.2	465.4	2,836.2
G. Beverages and cocoa preparation	3402.6	10,800.3	3211.8	10,679.7	2679.4	12,263.7
H. Other food	55.5	14,185.1	131.8	12,433.6	62.4	12,044.2
I. Tobacco	156.3	4,763.2	131.2	6,391.8	27.9	3,130.2
CLASS I. TOTAL	4307.6	100,584.3	4152.9	106,251.5	3680.1	97,783.1
II. RAW MATERIALS AND ARTICLES MAINLY UNMANUFACTURED.						
B. Other non-metalliferous mining and quarry products and the like	132.7	1056.4	153.6	1,191.0	80.5	1,018.8
D. Non-ferrous metalliferous ores and scrap	112.4	4026.4	349.7	4,523.4	138.9	3,296.1
E. Wood and timber	—	6468.2	—	7,625.4	—	7,582.0
F. Raw cotton and cotton waste	1012.9	6596.3	921.2	9,975.7	1992.6	14,452.6
G. Wool raw and waste and woollen rags	472.6	14,304.0	281.9	12,689.2	625.7	15,991.4
J. Other textile materials	1339.9	3798.4	1217.2	3,992.4	1699.3	4,708.9
I. Seeds and nuts for oil, oils, fats, resins and gums	1431.4	7101.8	1097.3	8,908.4	1467.6	9,342.0
K. Hides and skins undressed	168.7	5,173.4	540.8	6,238.7	617.1	6,748.2
M. Rubber	101.2	2,095.8	129.3	3,628.8	79.3	1,721.6
N. Miscellaneous raw materials and articles mainly unmanufactured	156.0	2,345.2	141.8	2,699.5	187.5	2,737.1
CLASS II. TOTAL	4927.8	58,186.7	4832.6	72,207.7	6888.7	73,840.7
III. ARTICLES WHOLLY OR MAINLY MANUFACTURED.						
C. Iron and steel and manufactures thereof	77.3	3004.0	338.0	7,665.3	148.8	2,538.2
D. Non-ferrous metals and manufactures thereof	—	9188.8	—	9,807.9	—	11,028.1
J. Woollen and worsted yarns and manufactures	159.2	1092.4	186.1	996.9	152.3	1,146.9
L. Manufactures of other textile materials	862.8	1182.7	837.4	1,142.4	937.1	1,267.3
O. Chemicals, drugs, dyes and colours	32.9	3589.2	35.4	3,153.4	47.3	3,191.8
P. Oils, fats and resins, manufactured	20.9	11,115.7	31.6	11,944.3	38.1	9,461.0
Q. Leather and manufactures thereof	935.2	1826.5	894.5	1,637.3	1322.3	2,432.1
CLASS III. TOTAL	2088.3	57,783.5	2323.0	65,194.3	2645.9	56,133.6
GRAND TOTAL OF TRADE	11,323.7	218,543.3	11,308.5	245,285.0	13,214.7	229,942.5

* Only those groups appear in which separate figures for British India are shown. The total of each class includes, however, the totals of groups in which British India is not shown.

APPENDIX C.

OFFICERS OF THE TRADE DEPARTMENT OF THE HIGH COMMISSIONER
FOR INDIA SERVING ON EMPIRE AND TRADE COMMITTEES IN THE
UNITED KINGDOM, MARCH 1939.

This list does not include the Committees which are ordinarily attended by the High Commissioner personally.

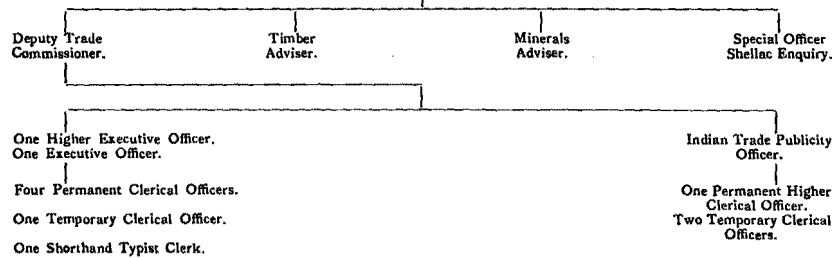
Main Body.	Committee or Sub-committee.	Representative for India.	Capacity.
Imperial Economic Committee	—	Sir D. B. Meek, C.I.E., O.B.E., D.Sc.	Substitute for H.C.
" "	Tobacco Sub-committee	" "	" "
Imperial Shipping Committee	—	" "	" "
Board of Trade	Advisory Council ...	" "	Nominated by India Office
Imperial Institute	Governing Body ...	" "	Substitute for H.C.
" "	Advisory Council on Plant and Animal Products	A. J. Gibson ...	Nominated by H.C.
" "	Advisory Council on Minerals	G. H. Tipper ...	Substitute for I.T.C.
" "	Iron and Ferro-Alloys	" ...	Nominated by H.C.
" "	Coal and Petroleum	" ...	" "
" "	Base Metals ...	" ...	" "
" "	Precious Metals ...	" ...	" "
" "	Chemical Industries	" ...	" "
" "	Miscellaneous Minerals	" ...	" "
" "	Hides and Skins Committee	M. Ikramullah, I.C.S.	Substitute for I.T.C.
" "	Vegetable Fibres Committee	" ...	" "
" "	Vegetable Oils and Oilseeds Committee	" ...	" "
" "	Consultative Committee on Vegetable Insecticide Materials	" ...	Nominated by H.C.
" "	Timbers Committee	Sir H. W. A. Watson	" "
" "	Tanning Materials Committee	A. J. Gibson ...	" "
" "	Essential Oils ...	" ...	" "
" "	Gums and Resins ... (Chairman)	" ...	" "
Empire Cotton Growing Corporation	Board of Trustees ...	Sir D. B. Meek, C.I.E., O.B.E., D.Sc.	Nominated by India Office
" "	Administrative Council	" "	Nominated by Govt. of India
" "	Executive Committee	" "	Nominated by India Office
British Empire Producers' Organisation	Council ...	" "	Nominated by H.C.
" "	Tobacco Committee	M. Ikramullah, I.C.S.	" "

APPENDIX C—continued.

Main Body.	Committee or Sub-committee.	Representative for India.	Capacity.
British Empire Producers' Organisation	Coffee Committee ...	M. Ikramullah, I.C.S.	Nominated by H.C.
British Standards Institution	Technical Committee, Timbers	Sir H. W. A. Watson	" "
Empire Forestry Association	Governing Council	" "	" "
Timber Trades Federation of the U.K.	—	" "	" "
British Wood Preserving Ass'n.	—	" "	" "
Society of Chemical Industry	Plastics Group ...	A. J. Gibson ...	Special Officer, Lac Inquiry
International Electro-Technical Commission	Shellac	" "	" "
British Electrical & Allied Industries Research Association	Insulating Varnishes	" "	" "
British Standards Institution	—	" "	" "
" "	Insulating Materials for Electrical Purposes E.L.16	" "	" "
" "	Varnishes B/1 ...	" "	" "
Oil & Colour Chemists' Association (President)	—	" "	" "
Food Investigation Board	—	M. Ikramullah, I.C.S.	Nominated by H.C.
" "	Consultative Group	" "	" "
International Rubber Regulation Committee	—	Sir D. B. Meek, C.I.E., O.B.E., D.Sc.	Nominated by Govt. of India
The International Tea Committee	—	" "	" "
International Sugar Council	—	" "	" "
Indian Coffee Market Expansion Board	Chairman	" "	" "
Wheat Advisory Committee	—	" "	" "

APPENDIX D.

Indian Trade Commissioner.



APPENDIX E.

FUNCTIONS ALLOTTED TO THE DEPUTY TRADE COMMISSIONER,
ADVISERS AND OTHER OFFICERS AND STAFF OF THE
TRADE DEPARTMENT.

DEPUTY TRADE COMMISSIONER.

- (1) Interviews and visits.
- (2) Furnishes general commercial information regarding India, with special reference to agricultural, statistical and tariff enquiries.
- (3) Furnishes banks with monthly information regarding Indian trade.
- (4) Undertakes special enquiries and reports on Indian economic subjects and visits connected therewith.
- (5) Represents the Indian Trade Commissioner on the Vegetable Fibres, Oils and Oilseeds and Hides and Skins Committees of the Imperial Institute; see also Appendix C.

TIMBER ADVISER.

- (1) Interviews and visits.
- (2) Controls the sales of timbers from the Andamans.
- (3) Furnishes general information regarding Indian timbers and forest products and advises on timber exhibits.
- (4) Represents the High Commissioner on the Advisory Committee of the Imperial Institute on Timber and on the various bodies investigating forestry and timber questions, indicated in Appendix C.

SPECIAL OFFICER, LAC INQUIRY.

- (1) Interviews and visits.
- (2) Furnishes general information regarding Indian lac and shellac, their potentialities and uses.
- (3) Represents the High Commissioner on Advisory Committees of the Imperial Institute on Tanning Materials and Essential Oils and Resins; see also Appendix C.

MINERALS ADVISER.

- (1) Interviews and visits.
- (2) Furnishes general information regarding Indian mining and mineral products and advises on mineral exhibits.
- (3) Represents the High Commissioner on the Advisory Committees of the Imperial Institute on Tin and Tungsten, Refractories, Copper, Manganese, Iron and Steel, Chemical Industries, Mica and Miscellaneous Minerals; see also Appendix C.

INDIAN TRADE PUBLICITY OFFICER.

- (1) Interviews and visits.
- (2) Organises Indian Trade Publicity of all kinds, including participation in exhibitions and fairs, Indian cookery demonstrations, lectures, films, etc.
- (3) Undertakes special enquiries and reports on the markets for Indian products exhibited during Shopping Weeks, Window Displays, etc.

GENERAL AND PUBLICITY STAFF.

- (1) Interview all callers except those who have special appointments with the Indian Trade Commissioner, Deputy Indian Trade Commissioner, Indian Trade Publicity Officer or Commercial Advisers.
- (2) Furnish general commercial information regarding India with special reference to customs duties, merchandise marks, patents, etc.
- (3) Undertake special enquiries and reports on the markets for Indian goods and visits connected therewith; also the investigation of trade disputes.
- (4) Control and supervise trade introductions and the card index and other systems for the recording of information.
- (5) Issue on loan lantern slides, films and photographs.
- (6) Distribute publicity literature.
- (7) Arrange for the despatch of exhibits to exhibitions and fairs, etc.
- (8) Receive back all publicity material issued on loan and maintain stock registers.
- (9) Supervise the display of exhibits in the Exhibition Hall.
- (10) Supervise arrangements for the display of Indian goods in the Commercial Samples Rooms.

APPENDIX F.

TRADE AGREEMENT BETWEEN HIS MAJESTY'S GOVERNMENT IN THE UNITED KINGDOM AND THE GOVERNMENT OF INDIA. LONDON, MARCH 20, 1939.

UNITED KINGDOM—INDIA.

TRADE AGREEMENT.

His Majesty's Government in the United Kingdom of Great Britain and Northern Ireland and the Government of India, having resolved, so far as the relations between them are concerned, to replace by the present Agreement the Agreement concluded between them at Ottawa on the 20th August, 1932, have agreed upon the following provisions :—

ARTICLE 1

His Majesty's Government in the United Kingdom undertake that goods grown, produced or manufactured in India and consigned from any part of the British Empire which are now free of duty shall continue to enjoy entry free of customs duty into the United Kingdom.

ARTICLE 2

His Majesty's Government in the United Kingdom undertake, in respect of the goods the growth, produce or manufacture of India enumerated in Schedule I to this Agreement, that the difference between the rates of the duties of customs on such goods on importation into the United Kingdom when consigned from any part of the British Empire and the rates upon similar goods the growth, produce or manufacture of any foreign country shall not be less than the rates set out in that schedule.

ARTICLE 3

His Majesty's Government in the United Kingdom undertake that, in the event of any greater preference than the preference accorded by this Agreement being accorded in respect of goods of the kinds specified in Schedule I the growth, produce or manufacture of any other part of the British Empire, such greater preference will be extended to similar goods grown, produced or manufactured in India and consigned from any part of the British Empire.

ARTICLE 4

His Majesty's Government in the United Kingdom undertake to maintain until the 19th August, 1942, for tobacco grown, produced or manufactured in India and consigned from any part of the British Empire the existing margin of preference over foreign tobacco, so long, however, as the duty on foreign unmanufactured tobacco does not fall below 2s. 0½d. per pound, in which event the margin of preference shall be equivalent to the full duty.

ARTICLE 5

His Majesty's Government in the United Kingdom recognise the importance attached by the Government of India to the development of the use of unmanufactured Indian tobacco by tobacco manufacturers in the United Kingdom, and undertake that they will co-operate in any further measures that may appear necessary and practicable in order to facilitate the marketing of such tobacco in the United Kingdom.

ARTICLE 6

1. His Majesty's Government in the United Kingdom undertake that on and after the 15th August, 1939, drawback of duty shall not be allowed in the case of goods other than linseed oil, unmixed, manufactured in the United Kingdom and exported or shipped as stores therefrom in respect of linseed used in the manufacture of such goods. For the purposes of this Article "linseed oil" includes linseed oil refined or heat-treated or both refined and heat-treated, and "unmixed" means not mixed with any substances other than driers.

2. His Majesty's Government in the United Kingdom undertake that on and after the 15th August, 1939, drawback shall not be allowed in the case of ground-nut oil (hydrogenated or not) manufactured in the United Kingdom and exported or shipped as stores therefrom in respect of ground-nuts used in the manufacture of such oil.

ARTICLE 7

His Majesty's Government in the United Kingdom undertake that the goods specified in Schedule II to this Agreement, of whatever origin and from whatever place arriving, shall be admitted into the United Kingdom free of customs duty.

ARTICLE 8

The Governments of the non-self-governing Colonies, the Protectorates and Protected States will accord to India any preference which may for the time being be accorded to any other part of the British Empire, and the Governments of the Colonies and Protected States shown in Schedule III to this Agreement will accord to India preferences on the commodities and at the rates shown therein.

Provided that the operation of the first paragraph of this Article shall not extend to any preferences accorded by Northern Rhodesia to the Union of South Africa, Southern Rhodesia and the High Commission Territories in South Africa.

Provided also that in the case of Ceylon the first paragraph of this Article shall apply only so far as is consistent with the terms of Article 13 of this Agreement.

ARTICLE 9

The Government of India undertake, in respect of goods the growth, produce or manufacture of the United Kingdom of the kinds specified in Schedule IV to this Agreement which comply with the laws and statutory regulations for the time being in force defining Empire goods for the purpose of customs duties, that the difference between the rates of customs duties on such goods on importation into India and the rates upon similar goods the growth, produce or manufacture of any foreign country shall not be less than the margins set out in that schedule.

ARTICLE 10

1. In this Article:—

The expression "cotton year" means a year beginning on the 1st January.

The expression "cotton piece goods year" means a year beginning on the 1st April.

A cotton piece goods year and the cotton year in which that cotton piece goods year begins are referred to as "corresponding"; and the expression "the following cotton piece goods year" means in relation to a cotton year the cotton piece goods year beginning on the 1st April next after the end of that cotton year.

The word "yard" means a linear yard.

The word "bale" means the weight of lint cotton contained in the standard Indian bale or gross weight 400 lb. and nett weight 392 lb.

The expression "United Kingdom cotton piece goods" means fabrics manufactured in the United Kingdom of the kinds which, at the date of the signature of this Agreement, were assessable to duty on import into British India under item 48(3) or item 48(9) of the First Schedule to the Indian Tariff Act, 1934, at the rates applicable to fabrics of British manufacture.

The expression "Indian raw cotton" means raw cotton grown in India.

2. His Majesty's Government in the United Kingdom undertake that they will continue to use all possible efforts in co-operation with commercial interests to stimulate the consumption of Indian cotton in all possible ways, including technical research, commercial investigation, market liaison and industrial propaganda. They have taken note that it is the desire of cotton growers in India that as much as possible of their production of short and fair staple varieties of cotton should be absorbed in the United Kingdom. They have also taken note, and invite the Government of India to take note, that the Lancashire Indian Cotton Committee, set up

by His Majesty's Government in the United Kingdom to stimulate the consumption of Indian cotton, have expressed their sympathy with that desire and their intention to take all practicable steps to assist in its fulfilment. It is recognised that the fulfilment of the foregoing objectives largely depends on the continued pursuit by all interests concerned in India of the policy of improving the quality and staple of Indian cotton exported to the United Kingdom by all practicable means.

3. From the entry into force of this Agreement the customs duties charged on imports into India of United Kingdom cotton piece goods shall not, save as provided in paragraphs 5 and 7, exceed the following rates, hereinafter referred to as the basic rates, namely :—

- (a) Printed goods—17½ per cent. *ad valorem*;
- (b) Grey goods—15 per cent. *ad valorem*, or 2 annas 7¼ pies per lb., whichever is the higher;
- (c) Other goods—15 per cent. *ad valorem*.

4. If in any cotton piece goods year the total quantity of United Kingdom cotton piece goods imported into India does not exceed 350 million yards, the duties charged on imports of such goods into India after the end of that year, and until the end of any cotton piece goods year in which the total quantity of such goods imported into India exceeds 425 million yards, shall not exceed the basic rates reduced by 2½ per cent. *ad valorem*, and a proportionate reduction shall apply to the alternative specific duty on United Kingdom grey cotton piece goods.

5. If in any cotton piece goods year the total quantity of United Kingdom cotton piece goods imported into India exceeds 500 million yards, the duties charged on imports of such goods into India in the following cotton piece goods year may be increased above the basic rates to such rates as may be deemed necessary for the purpose of restricting imports of such goods during the year to the maximum yardage figure for the preceding cotton piece goods year, but shall be reduced to the basic rates (or, where the provisions of paragraph 4 are applicable, in accordance with those provisions) after the end of any cotton piece goods year in which the total quantity of such imports into India has not exceeded 425 million yards.

The expression "maximum yardage figure" for any cotton piece goods year means 500 million yards, or, for a year corresponding to a cotton year in which there is a deficiency, as defined in paragraph 6, 500 million yards reduced by the appropriate figure in accordance with the provisions of paragraph 6.

6. For the purpose of determining the appropriate rates of duty to be charged on United Kingdom cotton piece goods under this Article, the quantity of United Kingdom cotton piece goods actually

imported into India in any cotton piece goods year corresponding to a cotton year in which there is a deficiency shall be deemed to have been increased by 25 million yards for every 50,000 bales of the deficiency or for any part thereof, provided that the deficiency does not exceed 100,000 bales in the cotton year ending 31st December, 1939, and 150,000 bales in any subsequent cotton year.

The word "deficiency" means the amount by which imports of Indian raw cotton into the United Kingdom fall below the following quantities :—

	<i>Bales.</i>
For the cotton year ending 31st December, 1939	500,000
For the cotton year ending 31st December, 1940	550,000
For every subsequent cotton year	600,000

7. Notwithstanding anything contained in the preceding paragraphs, if the imports of Indian raw cotton into the United Kingdom fall below 400,000 bales in the cotton year ending 31st December, 1939, or in the cotton year ending 31st December, 1940, and 450,000 bales in any other cotton year, the duties charged on imports of United Kingdom cotton piece goods into India in the following cotton piece goods year may be increased above the basic rates to such extent as the Government of India may, after consultation with His Majesty's Government in the United Kingdom, determine.

8. (1) If in any cotton year the quantity of Indian raw cotton imported into the United Kingdom exceeds 750,000 bales, the rate of duty charged on United Kingdom printed cotton piece goods imported into India in the following cotton piece goods year shall not exceed the duty charged in that year on other United Kingdom cotton piece goods imported into India.

(2) If in any cotton piece goods year in which a reduction in the duty on United Kingdom printed cotton piece goods takes effect under the provisions of this paragraph, or in any following cotton piece goods year in which the same reduction remains in force, the quantity of United Kingdom printed cotton piece goods imported into India is in excess of the quantity of such goods so imported in the cotton piece goods year immediately preceding that in which the said reduction first took effect, such excess up to a maximum quantity of 25 million yards shall not be taken into account for the purposes of determining whether or not the figure of 425 million yards specified in paragraph 4 of this Article or the figure of 500 million yards specified in paragraph 5 of this Article has been exceeded.

9. For the purpose of calculating imports in any cotton year or cotton piece goods year under this Article there shall be deducted

the amount of re-exports from the United Kingdom of Indian raw cotton in that year and the amount of re-exports from India of United Kingdom cotton piece goods in that year.

10. Any alteration of the duties charged on United Kingdom cotton piece goods imported into India which falls due to be made under the provisions of this Article shall come into effect not later than the 17th April of the cotton piece goods year to which it relates, and the relative provisions of this Article shall be deemed to have been duly fulfilled if such alteration takes effect on or before that date.

ARTICLE 11

The Government of India undertake to accord to the non-self-governing Colonies, the Protectorates and Protected States, and the Mandated Territories of Tanganyika, the Cameroons under British Mandate and Togoland under British Mandate, preferences on the commodities which comply with the laws and statutory regulations for the time being in force defining Empire goods for the purpose of customs duties and at the rates shown in Schedule V to this Agreement, and also any preferences for the time being accorded to any part of the British Empire other than Burma if His Majesty's Government in the United Kingdom so request.

Provided that the Government of India shall not be bound to accord any preference to Ceylon except as provided in Article 13 of this Agreement,

Provided further that the Government of India shall not be bound to continue to accord any preferences to any Colony, Protectorate or Protected State which, not being precluded by international obligations or, in the case of Nigeria, by the declared policy of His Majesty's Government in the United Kingdom from according preferences, either (i) accords to India no preferences or (ii) accords to some other part of the British Empire (in the case of Northern Rhodesia, excepting the Union of South Africa, Southern Rhodesia and the High Commission Territories in South Africa) preferences not accorded to India.

ARTICLE 12

The Government of India undertake to accord to goods the growth, produce or manufacture of any of the non-self-governing Colonies, the Protectorates and Protected States, and the Mandated Territories of Tanganyika, the Cameroons under British Mandate, Togoland under British Mandate and Palestine, treatment not less favourable than that accorded to similar goods the growth, produce or manufacture of any foreign country.

ARTICLE 13

1. The Government of India will, as soon as may be after the conclusion of this Agreement, enter into negotiations with the Government of Ceylon regarding the trade relations between India and Ceylon.

2. The Government of Ceylon will continue in force during the interim period the preferences at present accorded to India as set out in Schedule III to this Agreement, and the Government of India will continue to accord during the interim period:—

(a) to Ceylon the preferences to be accorded under Article 11; and

(b) to Ceylon and to the Colonies, Protectorates, Protected States and Mandated Territories to which preferences are to be accorded under Article 11, preferences at the rates shown in Schedule VI to this Agreement on the commodities named in that schedule which comply with the laws and statutory regulations for the time being in force defining Empire goods for the purpose of customs duties.

3. In this Article the expression "the interim period" means a period ending on the date on which any Agreement between the Government of India and the Government of Ceylon resulting from the negotiations heretofore mentioned comes into effect, or a period of six months from the date on which the present Agreement comes into effect, whichever is the shorter. Provided that, if it appears likely that the said negotiations will be protracted beyond the said period of six months, His Majesty's Government in the United Kingdom and the Government of India shall consider in consultation whether the interim period should be extended.

ARTICLE 14

His Majesty's Government in the United Kingdom undertake to extend to India any tariff preferences which are, or may be, accorded to Canada, the Commonwealth of Australia, New Zealand, the Union of South Africa, Eire, Newfoundland, Southern Rhodesia or Burma, and the Government of India undertake to extend to the United Kingdom any tariff preferences which are, or may be, accorded to Canada, the Commonwealth of Australia, New Zealand, the Union of South Africa, Eire, Newfoundland or Southern Rhodesia.

ARTICLE 15

In the event of circumstances arising which, in the judgment of His Majesty's Government in the United Kingdom or of the Government of India, as the case may be, necessitate a variation in the terms of this Agreement, the proposal to vary its terms shall be the subject of consultation between the two Governments.

ARTICLE 16

This Agreement shall come into force on a date to be mutually agreed between the two Governments. On the coming into force of the present Agreement, the Agreement concluded between His Majesty's Government in the United Kingdom and the Government of India at Ottawa on the 20th August, 1932, shall cease to have effect between the United Kingdom and India. Pending the coming into force of the present Agreement, the two Governments will apply its provisions as far as may be possible. The present Agreement shall continue in force until the 31st March, 1942. Unless six months before the 31st March, 1942, notice of termination shall have been given by either Government to the other, the Agreement shall remain in force until the expiry of six months from the date on which a notice of termination is given.

Done in duplicate, at London, this twentieth day of March, 1939.

Signed on behalf of His Majesty's Government in the United Kingdom of Great Britain and Northern Ireland :

OLIVER STANLEY.

Signed on behalf of the Government of India :

FIROZ KHAN NOON.

SCHEDULE I

(See Articles 2 and 3.)

(a) Preferences at a rate of 10 per cent. *ad valorem*—

- Bones.
- Castor seed.
- Coir yarn.
- Cotton yarns, unbleached, up to No. 40 count.
- Goatskins, raw, dried, salted or pickled, but not further treated, of varieties supplied by India to the United Kingdom.
- Gram or chick pea.
- Ground-nuts.

Hardwoods, hewn or sawn, the following—

Indian hardwoods—

- Tectona grandis* (teak).
- Dipterocarpus* species (gurjun).
- Terminalia crenulata* (also known as *Terminalia tomentosa*) (laurel).
- Terminalia bialata* (silver greywood and white chuglam).
- Dalbergia latifolia* (rosewood or Bombay blackwood).
- Diospyros* species (ebony, including Andaman marblewood).
- Pterocarpus dalbergioides* (Andaman padauk).
- Chloroxylon swietenia* (satinwood).
- Canarium euphyllum* (white dhup).
- Santalum album* (sandalwood).
- Albizia lebbek* (kokko).

Similar foreign hardwoods—

- Tectona grandis* (teak).
- Chlorophora excelsa* (iroko or "African teak").
- Hopea*, *Shorea*, *Parashorea* and *Pentacme* species (yakal, Bangkirai and lauan).
- Dipterocarpus* species (apitong, bagac, keruing, yang and dau).
- Dryobalanops* species (kapur, kamfer or Borneo camphorwood).
- Terminalia crenulata* (also known as *Terminalia tomentosa*) (laurel).
- Terminalia superba* (fraké, limba, limbo or noyer du Mayombe).
- Dalbergia nigra* (Brazilian rosewood).
- Diospyros* species (ebony).
- Pterocarpus* species (padauk).
- Zanthoxylum flavum* (satinwood).
- Canarium* species.
- Santalum* species (sandalwood).

Leather, undressed—hides, other than sole leather.

Leather, undressed—skins.

Linseed.

Magnesite.

Oil-seed cake and meal.

Paraffin wax.

Sandalwood oil.

Soya beans.

Spices, the following—

Pepper, ginger and cardamoms.



TEXTILES SECTION, BRITISH INDUSTRIES FAIR, 1939.

- (b) Preferences at a rate of 15 per cent. *ad valorem*—
 Castor oil, linseed oil, coconut oil, ground-nut oil, rape oil and
 sesamum oil.
 Granite setts and curbs.
 Leather, dressed—
 (i) Box and willow calf, box and willow sides, and other chrome
 tanned calf, kip and hide leather, but not patent leather or
 machinery belting.
 (ii) Reptile leather of the following descriptions—
 Snake, lizard, crocodile and alligator skins, not shaped or subjected
 to any process other than dressing or dressing and colouring.
 Manufactures wholly of jute, the following—
 Cordage, cables, ropes and twine (including polished, starched or
 glazed singles, and all multiples).
- (c) Preferences at a rate of 20 per cent. *ad valorem*—
 Coir mats and matting.
 Manufactures wholly of cotton, the following—
 Tissues and like materials.
 Household goods and similar articles for non-domestic use.
 Blankets, shawls, coverlets and travelling rugs.
 Handkerchiefs.
 Manufactures wholly of jute, the following—
 (i) Tissues not made up (not including rags).
 (ii) Sacks and bags of a shape similar to sacks.
- (d) Preference at a specific rate of 1s. per cwt.—
 Magnesium chloride.
- (e) Preference at a specific rate of 9s. 4d. per cwt.—
 Coffee.
- (f) Preference at a specific rate of 2d. per lb.—
 Tea.
- (g) Preferences at a specific rate of ½d. per lb.—
 Rice, husked, including cargo rice and cleaned rice whole, but not
 including broken rice.
 Rice in the husk.
- (h) Preferences at the undermentioned rates—
 Carpets, carpeting and floor rugs, wholly or partly of wool, and not
 containing any silk or artificial silk—
 (i) Hand made, knotted 4s. 6d. per sq. yard,
 exclusive of fringes.
 (ii) Other kinds 20 per cent. *ad
 valorem*.

SCHEDULE II

(See Article 7.)

Shellac, seed lac, stick lac, and other varieties of these lacs.
 Jute, raw.
 Myrabolams.
 Mica slabs and splittings.
 Hemp of the variety *crotalaria juncea*, not further dressed after scutching
 or decortivating; tow of such variety of hemp.

SCHEDULE III

(See Articles 8 and 13.)

(1) Ceylon.

(a) At a rate of not less than 5 per cent. *ad valorem*—

Cotton piece goods.

Fruit, dried or otherwise preserved without sugar (except canned fruit and currants, dates and raisins).

Tanks and drums of iron and steel, black painted or galvanised.

(b) At a rate of not less than 10 per cent. *ad valorem*—

Cotton yarn.

Fruit, fresh, dried or otherwise preserved, except currants and except those fruits to which a preference of not less than 5 per cent. *ad valorem* applies under Section (1) (a) of this schedule.

Iron and steel, including machinery other than oil pressing and refining, but excluding the following—

Tea chest fittings.

Sheets and circles declared to be imported for the purpose of manufacturing drums for the export of Ceylon produce.

Plain plates and sheets, flat or corrugated, not fabricated.

Expanded metal and other materials for reinforcement, not fabricated.

Rolled angles, bulbs, channels, shapes and sections, H iron, girders, tees, beams, joists, pillars and rails, not fabricated.

Bars, rods and slabs, including blister, jumper and tool steel, not fabricated.

Staples and wire nails.

Unwrought metal (including pig iron).

Tanks and drums, black painted or galvanised.

Vegetables, preserved or tinned, but not dried.

Pig lead, except lead sheets, tea lead or foil.

Teak and other hardwoods (excluding manufactures thereof).

Perfumery, cosmetics, powder and toilet preparations (except perfumed spirits).

Apparel of woollen, silk and artificial silk and mixed material.

Boots and shoes (other than canvas, rubber-soled).

Woollen carpets and rugs.

(c) At specific rates—

Vegetables fresh or dried (including fresh chillies but excluding onions, potatoes and garlic)

at the rate of 1 rupee per cwt.

Beans

at the rate of 50 cents. per cwt.

Tea

at the rate of 12½ cents. per lb.

Beedies

at the rate of 50 cents. per lb. gross weight.

Cigars

at the rate of 75 cents. per lb.

Snuff

at the rate of 50 cents. per lb.

Hooka and beedy tobacco

at the rate of 30 cents. per lb.

Cigarettes

at the rates per lb. specified below as against cigarettes manufactured in foreign countries:—

(i) Manufactured in the British Empire from Empire-grown tobacco—

(a) Sold wholesale at not more than Rs. 11 per lb. nett Rs. 2

(b) Sold wholesale at more than Rs. 11 per lb. nett Re. 1

- (ii) Manufactured in the British Empire from foreign tobacco—
- | | |
|--|-----------|
| (a) Sold wholesale at not more than Rs. 11 | |
| per lb. nett | Re. 1-50 |
| (b) Sold wholesale at more than Rs. 11 | |
| per lb. nett | 50 cents. |
- (iii) Manufactured in the British Empire from Empire-grown and foreign tobacco at rates intermediate between (i) and (ii) above according to the certified proportion of Empire and foreign leaf content.

Other manufactured tobacco ... at the rate of 75 cents. per lb.

(2) The Governments of Malaya other than the Straits Settlements.

- (a) At a rate of not less than 10 per cent. *ad valorem*—

Ground-nuts.

Cotton piece goods.

And, so long as it is consistent with the tariff policies of the Governments to impose a customs duty on the commodity in question—

Perfumery.

- (b) At 2 cents. per lb.—

So long as it is consistent with the tariff policies of the Governments to impose customs duties on the commodities in question—

Ground-nut oil (Kachang oil).

Gingelly oil.

(3) The Governments of Malaya including the Straits Settlements.

At 10 cents. per lb.—

Unmanufactured tobacco.

SCHEDULE IV

(See Article 9.)

Tariff Item.	Article.	Margin of preference.
22 (5) (b)	Drugs and medicines containing spirit— (i) entered in such a manner as to indicate that the strength is not to be tested ... (ii) not so entered	Rs. 4 per Imperial gallon. Rs. 3 per Imperial gallon of the strength of London proof.
25 (4)	Cement not otherwise specified	10 per cent.
Ex 28	Chemicals, drugs and medicines, all sorts not otherwise specified (except hydrochloric, nitric, sulphuric, tartaric and other acids, anhydrous ammonia, potassium bichromate and other potassium compounds, sodium bichromate, sodium cyanide and sodium carbonate)	10 per cent.
30	Paints, colours and painters' materials, all sorts not otherwise specified, including paints, solutions and compositions containing dangerous petroleum within the meaning of the Indian Petroleum Act, 1934	10 per cent.
30 (2)	Paints, colours and painters' materials, the following, namely:— (a) Red lead, genuine dry, genuine moist and reduced moist. (b) White lead, genuine dry. (c) Zinc white, genuine dry. (d) Paints, other sorts, coloured, moist	10 per cent.
49 (1)	Fents, being <i>bona fide</i> remnants of piece goods or other fabrics	10 per cent.
Ex 49 (4)	Woollen carpets, floor rugs, shawls and other manufactures of wool, not otherwise specified, including felt but excluding woollen waste and rags	10 per cent.
63 (14)	Iron or steel hoops and strips	10 per cent.
63 (24)	Iron or steel barbed or stranded wire and wire rope	10 per cent.
64	Copper, wrought, and manufactures of copper, all sorts not otherwise specified	10 per cent.
72 (5)	Domestic refrigerators	10 per cent.
Ex 72 (6)	Sewing and knitting machines and parts thereof	10 per cent.
Ex 73	Electrical instruments, apparatus and appliances, not otherwise specified, excluding telegraphic and telephonic (except batteries, accumulators and electro-medical apparatus)	10 per cent.

Tariff Item.	Article.	Margin of preference.
73 (1)	<p>The following electrical instruments, apparatus and appliances, namely :—</p> <p>Electrical control gear and transmission gear, namely, switches (excluding switch-boards), fuses and current-breaking devices of all sorts and descriptions, designed for use in circuits of less than ten amperes and at a pressure not exceeding 250 volts; and regulators for use with motors designed to consume less than 187 watts; bare or insulated copper wires and cables, any one core of which, not being one specially designed as a pilot core, has a sectional area of less than one-eightieth part of a square inch, and wires and cables of other metals of not more than equivalent conductivity; and line insulators, including also cleats, connectors, leading-in tubes and the like, of types and sizes such as are ordinarily used in connection with the transmission of power for other than industrial purposes, and the fittings thereof but excluding electrical earthenware and porcelain otherwise specified ...</p>	10 per cent.
73 (4)	<p>Wireless reception instruments and apparatus and component parts thereof, including all electric valves, amplifiers and loud speakers which are not specially designed for purposes other than wireless reception or are not original parts of and imported along with instruments or apparatus so designed</p>	10 per cent.
75 (1)	<p>Motor cars including taxi cabs and articles (other than rubber tyres and tubes) adapted for use as parts and accessories thereof</p>	7½ per cent.
75 (2)	<p>Motor cycles and motor scooters and articles (other than rubber tyres and tubes) adapted for use as parts and accessories thereof</p>	7½ per cent.
75 (3)	<p>Motor omnibuses; chassis of motor omnibuses, motor vans and motor lorries; and parts of mechanically propelled vehicles and accessories not otherwise specified, excluding rubber tyres and tubes</p>	7½ per cent.
Ex 75 (4)	<p>Cycles (other than motor cycles) imported entire or in sections and parts and accessories thereof, excluding rubber tyres and tubes</p>	10 per cent.
Ex 77	<p>Instruments, apparatus and appliances other than electrical, all sorts not otherwise specified, including photographic, but excluding scientific, philosophical and surgical</p>	10 per cent.

SCHEDULE V

(See Article 11.)

- (a) Preferences at a rate of not less than 10 per cent. *ad valorem*—
 Asphalt.
 Soda ash, including calcined, natural soda, and manufactured sesqui-carbonates.
 Gum arabic.
 Gum benjamin, ras and cowrie.
 Gum dammer.
 Dammer batu, unrefined.
 Rosin.
 Cutch.
 Gambier, all sorts.
 Coconut oil.
 Fresh vegetables.
 Vegetables, dried, salted or preserved.
 Fruit and vegetables, canned and bottled.
 Fruit juices.
 Sisal and aloe fibre.
 Ivory, unmanufactured.
 Sago (but not sago flour).
 Tapioca and tapioca flour.
 Artificial teeth.
 And so long as it is consistent with India's tariff policy to impose customs duties on the commodities in question—
 Fresh fruits (other than coconuts).
 Dried, salted or preserved fruits.
- (b) Preferences at a rate of $7\frac{1}{2}$ per cent. *ad valorem*—
 Beteinuts.
 Unground spices (other than cardamoms).
 Cardamoms, cassia, cinnamon, cloves, nutmegs and pepper—ground.
 And, so far as preferences are granted to the United Kingdom, drugs and medicines and apparel of all kinds.
- (c) Preferences at specific rates—
 Bitters at the rate of Rs. 3-12 per gallon.
 Coffee at the rate of 1 anna per lb.
 Rum at the rate of Rs. 3-12 per proof gallon.
 Unmanufactured tobacco at the rate of 8 annas per lb.

SCHEDULE VI

(See Article 13.)

- (a) Preferences at a rate of not less than 10 per cent. *ad valorem*—
 Citronella oil.
 Cinnamon oil.
 Cinnamon-leaf oil.
 Coconuts, husked, unhusked and other kinds, copra or coconut kernel, coir fibre, coir yarn, coir mats and matting.
 Fish, dry, unsalted.
 Oil seeds (other than essential).
 Vegetable oils (other than essential).
 Plumbago.
- (b) Preference at a rate of $7\frac{1}{2}$ per cent. *ad valorem*—
 Cardamoms, unground.
- (c) Preference at specific rate—
 Tea at the rate of 2 annas per lb.

Letter No. 1.

LETTER FROM THE INDIAN SIGNATORY ON THE SUBJECT OF ZINC.

London,

March 20, 1939.

SIR,

With reference to Article 15 of the Trade Agreement signed this day, I have the honour to inform you that the Government of India, having taken note of the statements of His Majesty's Government in the United Kingdom in the course of the recent discussions (1) that it is essential to the national security that the production of the zinc smelting industry in the United Kingdom should be maintained at a satisfactory level; and (2) that His Majesty's Government in the United Kingdom will consult the Government of India before taking any decision to impose a customs duty on imports of zinc from India into the United Kingdom; agree that it will be open to His Majesty's Government in the United Kingdom, after consultation with the Government of India, and notwithstanding the provisions of Article 1 of the Trade Agreement, to impose a customs duty on imports of zinc produced or manufactured in India.

It is understood that no customs duty will be imposed on zinc from India which is not equally applicable to zinc from other oversea Empire sources.

I have, etc.,

FIROZ KHAN NOON.

THE RIGHT HON. OLIVER STANLEY, M.C., M.P.,
President of the Board of Trade.

Letter No. 2.

LETTER FROM THE INDIAN SIGNATORY ON THE SUBJECT OF PIG IRON.

London,

March 20, 1939.

SIR,

With reference to Article 15 of the Trade Agreement signed this day, I have the honour to inform you that the Government of India, having taken note of the statements of His Majesty's Government in the United Kingdom in the course of the recent discussions (1) that, bearing in mind the provisions of Article 8 of the Agreement supplementary to the Ottawa Trade Agreement concluded between the two Governments on the 9th January, 1935, His Majesty's Government in the United Kingdom desire to reserve the right to impose a customs duty on imports of pig iron from India if after the expiry on the 31st March, 1941, of the Iron and Steel Protection Act, 1934, duties are applied to articles of iron and steel imported into India substantially less favourable to the United Kingdom than those for which that Act provides; and (2) that His Majesty's Government in the United Kingdom will consult the Government of India before taking any decision to impose such a customs duty; agree that it will be open to His Majesty's Government in the United Kingdom, after consultation with the Government of India, and notwithstanding the provisions of Article 1 of the Trade Agreement, to impose after the 31st March, 1941, a customs duty on imports of pig iron produced or manufactured in India if duties are applied to articles of iron and steel imported into India substantially less favourable to the United Kingdom than those for which the above mentioned Act provides, without prejudice, however, to the provisions of Section 4 (1) of the Indian Tariff Act, 1934.

It is understood that no customs duty will be imposed on pig iron from India which is not equally applicable to pig iron from other oversea Empire sources.

I have, etc.,

FIROZ KHAN NOON.

THE RIGHT HON. OLIVER STANLEY, M.C., M.P.,
President of the Board of Trade.

*Letter No. 3.*LETTER FROM THE INDIAN SIGNATORY ON THE QUESTION OF THE
EXTENSION TO OTHER COLONIAL DEPENDENCIES OF PREFERENCES
PRIMARILY OF INTEREST TO CEYLON.

London,

March 20, 1939.

SIR,

With reference to Article 13 of the Trade Agreement signed this day, I have the honour to inform you that the Government of India have taken note of the statement of His Majesty's Government in the United Kingdom in the course of the recent discussions that, in agreeing that the preferences included in Schedule VI to the Agreement are principally of interest to Ceylon, they are nevertheless anxious that the claims of other Colonial dependencies to receive any of these preferences should be sympathetically considered by the Government of India if the proposed negotiations between that Government and the Government of Ceylon do not result in the extension of such preferences to those dependencies for the duration of the Agreement concluded this day. I am authorised to state that the Government of India will give sympathetic consideration to any requests which His Majesty's Government in the United Kingdom may make in regard to such preferences on behalf of Colonial dependencies other than Ceylon.

I have, etc.,

FIROZ KHAN NOON.

THE RIGHT HON. OLIVER STANLEY, M.C., M.P.,
President of the Board of Trade.