

28958

SERVANTS OF INDIA SOCIETY'S LIBRARY,
POONA 4.

FOR INTERNAL CIRCULATION

To be returned on or before the last date stamped below

21 AUG 1964

14 SEP 1992

Dhananjayrao Gadgil Library



GIPE-PUNE-028958

28958

McGRAW-HILL PUBLICATIONS IN THE
AGRICULTURAL SCIENCES

LEON J. COLE, CONSULTING EDITOR

FARM MANAGEMENT

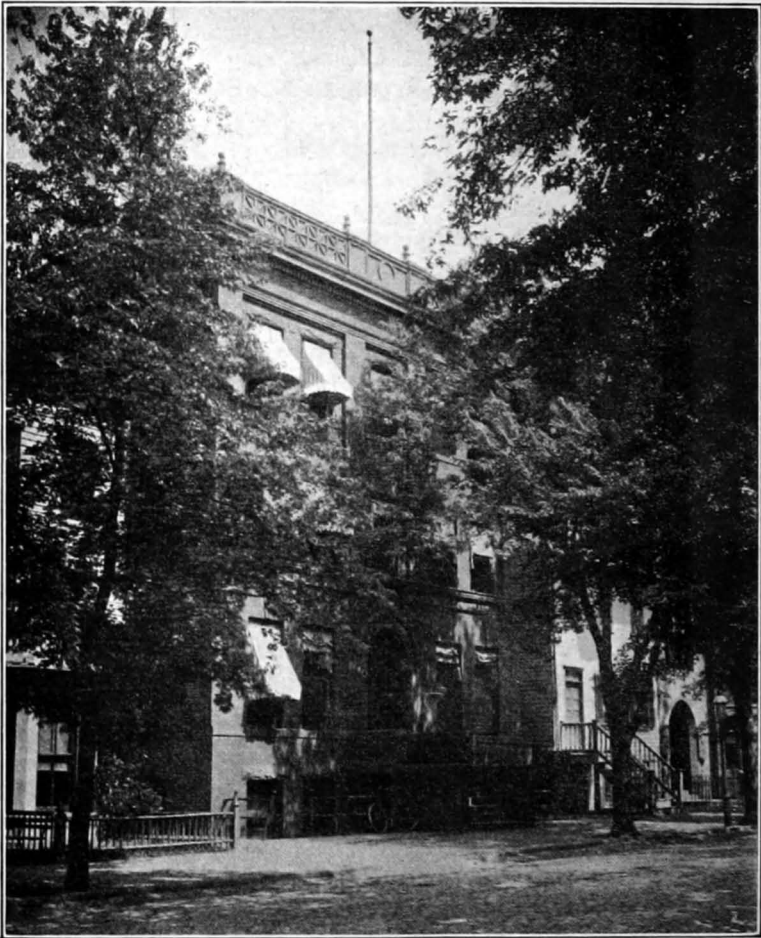
*The quality of the materials used in
the manufacture of this book is gov-
erned by continued postwar shortages.*

SELECTED TITLES FROM
MCGRAW-HILL PUBLICATIONS IN THE
AGRICULTURAL SCIENCES

LEON J. COLE, *Consulting Editor*

Adriance and Brison · PROPAGATION OF HORTICULTURAL PLANTS
Brown · COTTON
Cruess · COMMERCIAL FRUIT AND VEGETABLE PRODUCTS
Eckles, Combs, and Macy · MILK AND MILK PRODUCTS
Fawcett · CITRUS DISEASES
Fernald and Shepard · APPLIED ENTOMOLOGY
Gardner, Bradford, and Hooker · FRUIT PRODUCTION
Gustafson · CONSERVATION OF THE SOIL
Gustafson · SOILS AND SOIL MANAGEMENT
Hayes and Garber · BREEDING CROP PLANTS
Hayes and Immer · METHODS OF PLANT BREEDING
Heald · MANUAL OF PLANT DISEASES
Heald · INTRODUCTION TO PLANT PATHOLOGY
Hutcheson, Wolfe, and Kipps · FIELD CROPS
Jenny · FACTORS OF SOIL FORMATION
Jull · POULTRY HUSBANDRY
Laurie and Ries · FLORICULTURE
Leach · INSECT TRANSMISSION OF PLANT DISEASES
Little and Plastridge · BOVINE MASTITIS
Maynard · ANIMAL NUTRITION
Metcalf and Flint · DESTRUCTIVE AND USEFUL INSECTS
Palerson · STATISTICAL TECHNIQUE IN AGRICULTURAL RESEARCH
Peters · LIVESTOCK PRODUCTION
Rather · FIELD CROPS
Rice · BREEDING AND IMPROVEMENT OF FARM ANIMALS
Roadhouse and Henderson · THE MARKET-MILK INDUSTRY
Robbins, Crafts, and Raynor · WEED CONTROL
Schilleter and Richey · TEXTBOOK OF GENERAL HORTICULTURE
Thompson · VEGETABLE CROPS
Waite · POULTRY SCIENCE AND PRACTICE

There are also the related series of McGraw-Hill Publications in the Botanical Sciences, of which Edmund W. Sinnott is Consulting Editor, and in the Zoological Sciences, of which A. Franklin Shull is Consulting Editor. Titles in the Agricultural Sciences were published in these series in the period 1917 to 1937.



Original headquarters of the Federal Office of Farm Management, United States
Department of Agriculture, Washington, D. C.

Frontispiece

FARM MANAGEMENT

A TEXT-BOOK

FOR

STUDENT, INVESTIGATOR, AND INVESTOR

BY

R. L. ADAMS

PROFESSOR OF FARM MANAGEMENT, UNIVERSITY OF CALIFORNIA

FIRST EDITION

SIXTEENTH IMPRESSION

McGRAW-HILL BOOK COMPANY, Inc.

NEW YORK AND LONDON

121

X9(J): 8
F1

COPYRIGHT, 1921, BY THE
MCGRAW-HILL BOOK COMPANY, INC.

PRINTED IN THE UNITED STATES OF AMERICA

28958

THE MAPLE PRESS YORK PA

PREFACE

The business of farming is complex and almost infinitely diverse. At the outset both the observer of its conditions and the collector of its data face variations between the widest extremes not only of soil, water, climate, topography, and size of holdings, but also of individual opinions, experiences, practices, and ideals.

For instance, the man so situated that possible crops are apples, peaches, oranges, lemons, walnuts, or lima beans will reap different rewards from one who can raise only alfalfa or grain, or who is confined to buckwheat, rye, wild grasses, or pasture. Distance to and receptivity of the market are other influences, and affect in a marked way such things as vegetables, poultry products, berries, whole milk, and to a lesser extent, grains, beans, potatoes, pork, beef, and sheep. For the same crops there are variations in yield because of differences in soil type, climatic condition, age of planting, choice of variety, availableness of water, need of drainage, presence of alkali, market conditions, and farming method.

The necessity to provide a proper standard of living is the basis upon which all financial estimates must stand. It is the keynote to a discussion of the financial side of agriculture. Yet ideas differ widely as to what sum is needed to provide proper living for the average family. These differences may arise from (a) size of families, (b) age of members of the family, (c) standards of living demanded by different nationalities, (d) conditions of environment in which childhood was spent, (e) personal tastes as to what are proper social obligations, and (f) the degree of spending activity of various members of the family. Thus the comforts of one family will be the luxuries of a second and the necessities of a third.

Or again, the great variation in the characteristics of operators plays a most important part in determining the degree of success which will attend any farming enterprise. Compare, for example, the individual who admits he has been thirty-five years on a rented hay ranch, during a time when agriculture in its many changes has offered exceptional opportunities for advancement, with the man who, taking advantage of these opportunities, has amassed a modest fortune. Or, yet again, the man who is getting rich on a hundred acres of level, heavy-producing land, offers a striking contrast to the man losing money on a thousand acres of poor land.

28958

CONTENTS

PART I

CHAPTER I

	PAGE
GENERAL CONSIDERATIONS OF FARM MANAGEMENT.	1
Definition of Farm Management—The Object and Scope of Management—Management <i>vs.</i> Agricultural Economics—Financial Success Usual Farm Management Measure—Financial Test is General—Basic Knowledge of Agricultural Sciences and Practices Precedes Farm Management—Typical Questions—Graphic Presentation of the Place of Farm Management—Chart Arrangement Arbitrary but Valuable—Use of Management a Personal Matter—Management Constantly Changing—Use of Management in Actual Farming—Object of Studying Management—Fundamentals of Management—Time Element in Studying Management—Field Studies Should Supplement Printed Matter—Terms Used in Connection with Capital—Terms Used in Connection with Income—Terms Used in Connection with Expenses—Terms Used in Connection with Occupancy of Land—Terms Used in Connection with Labor—Terms Used in Connection with Crops—Terms Used in Connection with Live Stock—Illustrating Use of Terms.	

CHAPTER II

SELECTING FARMING AS AN OCCUPATION	17
Stability of Farming—Farming a Mode of Life—Two Ways to Consider Farming—Management Draws on Many Sources for Information—Scope of Detailed Information Needed—Local Practice the Result of Experience—Gaining Knowledge of Local Conditions—Getting Experience.	

CHAPTER III

SELECTING THE FARM BUSINESS	31
Locality Limitations—Capital Limitations—Income Limitations—Personal Inclination—Studying the Personal Factor—When a Choice is Possible—Examples of Conditions Limiting the Industry—Agricultural Regions of the United States—Tabulating Locality Possibilities and Limitations—Example of Locality Limitations and Possibilities—Extensive Farming More Stable—Summary of Factors Determining Desirability of a Farm Enterprise—Established Sections Have Advantages—Diversified <i>vs.</i> Specialized Farming—Comparison of General and Specialized Farming—Tendency is Toward Specialized Farming—Survey Findings—General Farming More Exacting—General Farming for Beginners.	

CHAPTER IV

SELECTING THE FARM.	55
When to Rent—Selecting the Right Land—Prices Sometimes too High—Choice of Farm a Personal Matter—Turning to Established Sections—Finding the Farm—Factors to Consider when Selecting a Farm—Personal—Earning Capacity—Physical Factors—The Shape of the Farm—Farm	

	PAGE
Arrangement—Topography—Soil Quality—Physical Properties—Healthfulness—Improvements—Water Supply for Family and Live Stock—Ease and Cost of Upkeep—Markets—Waste Lands—Percentage of Improved Land in United States—Effect of Highways on Acreage—Permanent and Temporary Waste—Woodland—Poor Pasture—Relation of Use to Price—Labor, Social and Financial Factors—Labor—Neighbors—Financial—Financial Test for Proposed Farm Proposition—Inherent Possibilities—Influence of Rise in Land Prices—Elements of the Successful Farm—Relative Value a Personal Matter—Size of the Farm—The “Minimum Efficient Unit”—Minimum Efficient Unit Relatively Small—Ideal Size—Acreage Required to Produce Given Income—Size of Farms to Provide Labor Incomes of \$500 to \$700—Returns Other than Labor Income—Other Examples and Sizes—Actual Examinations and Report—The Actual Examination of the Farm—Preparing Report—Preparing Report is Interesting—Score Cards—Valuing Farm Lands for Purchase—Factors Determining Land Values—Land Values and Returns—Estimating Home Value of Farm Lands—Estimating Productive Value of Farm Lands—Potential Values of Farm Lands—Good and Bad Lands—Buying and Selling Farm Lands—Abstract of Title—Certificate of Title—Deed—Selling Contracts.	
CHAPTER V	
ORGANIZING THE FARM BUSINESS	85
Advantages of a Farm Plan—Determining the Principal Objective—Necessity of Knowing Local Practices and Conditions—Tabular Presentation of Section Differences in Types of Farming—Local Practice a Guide in Organizing the Work—Farm Management Fundamentals—Plan Depends on Outstanding Individual Need—Planning to Provide Immediate Capital—Necessity for Complete Work—Applied to Live-stock Farming—Planning for Ultimate Profit—Producing or Purchasing—Choosing the Profitable Enterprise—Planning to Provide a Diversity of Enterprise—Planning to Provide Days of Productive Labor—Planning to Reduce Labor Requirements—Variation in Labor Needs—Planning to Produce Family and Farm Supplies—Planning the Reorganizing of Going Concerns—Planning Social Programs—Gathering Data in Planning—Sources of Data.	
CHAPTER VI	
THE SOIL FACTOR	113
Success in Farming Depends on Crop-producing Power of the Land—Correlating Recommendations and Practices—Introducing New Practices—Accepting Experiment Station Findings—Ways of Improving Soil Quality—Will Improving Soil Quality Pay?—Rotation of Crops and Cropping Systems—Definition of Rotation of Crops—Purpose of Rotation of Crops—Crop Rotation Presupposes Prepared Plan—Definition of Cropping System—Multiplying Cropping Systems—Determining Cropping Systems—Rules for Use in Planning Rotations—Example of a Rotation and Cropping System—Planning a Field Arrangement for Rotation of Crops—Use of Map in Arranging Fields for Crop Rotation—Green Manuring—Definition of Green Manure Crops—Purpose of Green Manuring—Determining Need for Artificial Inoculation with Bacteria for Legumes—Methods of Introducing Bacteria—Definition of Humus—Purpose of Humus—Green Manure Crops	

CONTENTS

xiii

	PAGE
as Sources of Humus—Value of Plant Foods from Green Manure Crops—Commercial Fertilizers—Important Elements—Getting Value from Commercial Fertilizers—How Commercial Fertilizers are Priced—Correctness of Analyses—Farm Mixtures <i>vs.</i> Factory Mixtures—High-grade Materials Preferable—Stable Manures—Composition—Cash Value—Physical Value—Limitations—Cold and Warm Manures—Amount of Stable Manures Produced by Live Stock—Handling—Stable Manures Tend to Force Growth—Recommendations for Use of Crop Rotations, Commercial Fertilizers and Stable Manures—Recommended Crop Rotations—For Farms in Middle Latitudes—For Utah, and Georgia—Recommended Green Manures—For Farms of the Gulf Coast Region of Alabama, Mississippi, and West Florida—For Sandy Lands of Indiana, Michigan and Ohio—For the Coastal Plain—Green Manures and Other Fertilizers Recommended for Kentucky and Tennessee—Evidence of Improvement from Farm Practice to Increase the Crop-producing Power of the Land—Evidence from the Coastal Plain—From Kentucky and Tennessee—From the Gulf Coast Region—Actual Farm Practices in the Use of Crop Rotation, Commercial Fertilizers, and Stable Manures—Rotations in Use by Farmers—Commercial Fertilizers and Stable Manures Used by Farmers—Where Use of Fertilizers is not Extensively Practiced—Green Manure Crops Used by Farmers—Use of Rotation and Manures by Farm Managers.	

CHAPTER VII

THE CALENDAR OF OPERATIONS	142
Definition—Value—Manner of Making—Example of Kind and Sequence of Farm Operations on Selected Crops (Pennsylvania)—Farm Operations in Producing Alfalfa (California)—In Producing Peaches (California)—Influence of Available Work Days—Graphic Presentations of Calendar of Operations—The Calendar of Operations in Connection with Continuous Feed for Live Stock.	

• CHAPTER VIII

CHOICE OF FARM EQUIPMENT	152
Factors Governing Selection—Environment a Factor in Determining Equipment—Experience Necessary—Justifying Equipment—Justifying Farm Buildings, and Individual Structures—Justifying Implements—Justifying Special Equipment and Tractors.	

CHAPTER IX

BUILDING EQUIPMENT.	161
Regional Variation in Building Equipment—Good and Bad in Farm Buildings—Studying Proposed Buildings—Procedure in Building—Construction Suggestions—Definition of Bill of Materials—Making a Bill of Materials—Detailed Plans of Construction—Space Allotment in Buildings—The Farmstead—Definition—Variations—Rearranging Existing Farmsteads—Planning—Suggestions—Location and Site—Not Necessary to Cramp the Farm Building Site—Grouping Buildings—Distance Between Buildings—Lanes—Axis of Stock Barns—Location of Silos—Screening Unsightly Structures and Accumulations—Confining Poultry and Live Stock—Landscape Effects—The Plan on Paper—Details of the Farm Plan Map—Details of the Farmstead Map.	

CHAPTER X

	Page
FENCING, WORK STOCK, IMPLEMENTS AND MACHINERY.	184
Fencing Equipment—Kinds of Fencing Used in the United States—Type of Farming and Size of Farm Determines Fencing—Field Arrangement Influences Fencing—Requirements of a Farm Fence—Gates—Life of and Test for Wire Fencing—Posts—Work Stock—Work Animals—Character of Farm Work Determines Type of Work Animals—Extremes in Work Animals Not Desirable—Poor Work Animals Uneconomical—Mating Teams—Working Stock—Number of Work Animals Required—Implements and Machinery—Factors Determining Implement and Machinery Equipment—Use of a Calendar of Operations in Estimating Implement and Machinery Equipment—Implement Needs of Barley—Additional Equipment Needs of Other Crops—Value of Calendars of Operations in Determining Implement and Machinery Needs—Special and Minor Equipment—What Constitutes Minor Equipment—List of Minor Equipment—Additional Minor Equipment—Costs—Examples of Lists of Total Equipment—Desirability of Second-hand Equipment—Determining Value of Second-hand Implements and Machinery—Determining Value of Work Animals—Determining Value of Dairy Cows—Depreciation Mounts with Age—When Second-hand Equipment is Especially Worth While—Costs of Equipment—Cost of Equipping a 20-cow Dairy—State Findings Concerning Costs of Equipping Farms—Michigan Costs of Equipping Dairy Farms—Dairy Farm Equipment Costs, Wisconsin, Michigan, Pennsylvania, and North Carolina—Relation of Equipment Investments to Returns—Building Equipment Costs, Ohio—Total Farm Equipment Costs, Ohio—Costs of Equipping Apple Orchards—Equipment Costs as Shown by Farm Management Surveys—Costs of Farm Equipment Vary—Example of and Variation in Costs, of Farm Equipment.	

CHAPTER XI

THE CAPITAL REQUIREMENTS OF FARMING	221
Recognition of Importance of Capital a Safeguard—"Capital" Covers Cash and Credit—Credit Expands Farming Opportunities—Wisdom of Determining Capital Needs—Capital Needs are Variable—Factors Affecting Capital Requirements of Farming—Individual Determinations Necessary—Estimating and Grouping Capital Needs—Variation in Possible Returns—Conservatism Should Rule in Estimating Possible Returns—Care in Estimating Items of Family Expense—Tabulating Capital Requirements—Method—Precautions to be Observed in Determining—The Safety Factor in Estimating—Capital Requirements Vary with the Business—Amount and Division of Farm Expenses as Indicating Capital Requirements—Amount and Distribution of Farm Expenses, Pennsylvania, Utah Lake Valley, Corn Belt, Georgia—Capital Requirements of Farming, As Owner—Classification As Owner, Ohio—Capital Requirements of Apple Orchards—Capital Required by Irrigation Farmers—Costs for 20-acre, 40-acre, and 160-acre Farm—Capital for California Farms—Capital Requirements of Tenant Farming—Capital Under Tenanting Compared with Owning, California—Effect of Type of Farm Business upon Capital—Desirability of Testing Capital Requirements When a Choice of Business is Possible—Sources of Capital—Factors which Influence Terms on Farm-mortgage Loans—Banking—Advantages—Using Banking Credit—Crop and Stock Mortgages—Use of Credit—Amortization Method of Paying Loans—Prevailing Interest Rates—Range—Legal Interest Rates and Statutes of Limitations.	

CONTENTS

xv

CHAPTER XII

	PAGE
FARM PROFITS	257
What the Business Should Pay—Other Ideas of Profit—The Business Should be Credited with All Production—Productive, Speculation and Home Values—Reference to Determination of Land Values—Deductions for Home and Speculative Values—Interest upon Operating Capital—Charge for Management—The Sinking Fund—Depreciation Charge—Examples of Estimating What a Farm Business Should Pay—Reasons for Demanding Full Returns of the Farm Business—Labor Income as a Measure of Profits—Findings Concerning Farm Profits from Farm Management Surveys—Incomes as Tenant or Owner—Sums Available, per Acre, Above Operating Expenses, 34 California Crops, 1915 and 1919 Data—Examples of Large Returns from Farming—California Examples of Farm Profits—Value of Perquisites—Determined Value of Perquisites—Family Needs as Found in Georgia—Living Costs in Minnesota—Family Living an Important Item—Value of Family Living in a Number of States—Perquisites Important to Farmers—Value of Perquisites to Individuals—Living Needs and Standards of Families Vary—The Unearned Increment.	

CHAPTER XIII

FACTORS AFFECTING PROFITS	275
Factors Affecting Profits—The Type of Farming as Affecting Profits—Examples of Effect on Profits of Type of Business—Size of Business as Affecting Profits—Effect of Size of Farm Area upon Income—Summary of Survey Findings, Effect of Size of Farm upon Income—Effect of Amount of Working Capital upon Income—Effect upon Income of Efficient Use of Land, Equipment and Labor—Examples of Effect upon Income of Efficient Use of Land, Equipment and Labor—Ways of Increasing the Size of the Farm Business—Quality of Business as Affecting Profits—Limitations to Improving Quality of the Business—Influence of Crop Yields upon Farm Profits—Where Greater Profit-taking is Easier—Examples of the Effect of Crop Yields upon Income—Influence of Live-stock Receipts upon Farm Profits—Examples—Effect of All Four Factors upon Incomes—Influence of High Prices on Profits—Increasing Profits by Curtailing Waste—Ways of Curtailing Waste—Examples Are Easy to Find—Curtailing Losses Caused by Rodents and Predatory Animals—Caused by Weeds, Insects, and Fungi—Caused by Animal Disease—Saving Energy of Workers—Eliminating Unprofitable Operations—Curtailing Lost Motion—Establishing Methods to Detect Waste—Reducing Various Waste—Curtailing Wastes in Feed Stock—In Boarding Men—Eliminating Unprofitable Investments and Surplus Labor.	

CHAPTER XIV

FINANCIAL FORECAST OF PROPOSED FARM PLANS	300
Objects of Financial Forecast—Limitation—Justification—Actual Practice Likely to Vary from Paper Plans—Procedure in Making up a Financial Forecast—Description of the Property—The Plan of Work—The Necessary Equipment—The Financial Test—Example of Financial Forecast.	

CHAPTER XV

FARM MANAGEMENT SURVEYS	314
Purposes of Farm Management Surveys—Method of Making Use of the Survey Methods for Collecting Farm Management Data—Personal Opinion	

	PAGE
Concerning Farm Management Surveys—Single Year <i>vs.</i> Continuous Records—Surveys Are Based on Farmer's Estimates—Possible Objection to Reporting Survey Data—Sample Forms Used in Farm Management Survey Work—List of Farm Management Surveys—Federal Farm Surveys—State Surveys—Farm Practice Surveys—Studies of Sugar Beet Farms—Studies of Apple Orchards—Studies of Potato Farms—Studies of Poultry Farms—Studies of Dairy Farms—Studies of Cotton Cultivation.	
PART II	
INTRODUCTION TO PART II	335
CHAPTER XVI	
FARM BOOKKEEPING	337
Definition of Farm Bookkeeping—Do Farmers Keep Records?—Purpose of Farm Accounts—Record-keeping Results in Closer Attention to Details—Account-keeping Can Be Made Attractive—Preliminaries in Starting Farm Bookkeeping—Scope of Complete Farm Accounts—Simple Accounts—Cost Records—Value—What Records to Keep—Records Used in the Simple System—Comparison of Bookkeeping and Cost Accounting—Supplementary Records—The Annual Summary as a Means of Determining What Records to Keep—Time Element in Keeping Accounts—Technical Training Unnecessary—Simplifying Accounts—Interpretation and Use of Results—Discussion of Records—Definition of Inventory—Value—Use—Taking an Inventory—Form for Inventory Taking—Determining Inventory Values—Valuing Implements, Machinery and Tools—Valuing Farm Animals—Valuing Field Crops—Effects of Appreciation and Depreciation upon Values—Depreciation Studies—Appreciation and Depreciation of Work Horses—Depreciation of Farm Equipment—The Cash Book—Description of the Cash Book—Example of Simple Cash Book—Cash Book Items Recorded by Enterprises—The Use of a Bank Book as a Cash Record—The Farm Diary Method of Records—Example of Diary Items—Description of the Annual Statement—Steps in Making Up an Annual Statement.	
CHAPTER XVII	
FARM COST ACCOUNTING	372
Function of Farm Cost Accounting—Farm Cost Accounting Similar to Commercial Cost Accounting—Cost Accounting Introduces Estimates—A Favorable Time to Start Accounts—Classes of Records Needed for a Complete Set of Farm Cost Accounts—Items to be Covered in Crop Cost Accounting—Charges—Credits to Crop—Items to be Covered in Live-stock Cost Accounting—Charges—Credits—Inventories in Cost Accounting—The Cash Book in Cost Accounting—Properly Classifying Items—How the Cash Book Entries Are Made—Indexing Accounts—Feed Records in Cost Accounting—Crediting Production—Manure Accounts—Labor Records for Cost Accounts—How the Work Record Entries Are Made—Method of Recording Routine Work or "Chores"—Supplementary Records—Supplementary Notes—Opening Cost Records at the Beginning of the Year—Closing Cost Accounts at the End of the Year—Increased Land Values—Determining Overhead—Illustrating Method of Determining Overhead—Final Test of Value of Cost Accounts—Example of Annual Statement Compiled from Costs Records—Example of a Crop Enterprise Costs Record—Study and Interpretation of Results:	

CONTENTS

xvii

CHAPTER XVIII

	Page
COSTS OF PRODUCING CROPS	404
Value of Costs of Production Data—Studying Costs of Production—Items Entering into Cost of Production—Objects Sought in Cost of Production Studies—The Farm Manager's Interest—Cost of Production Studies Should Start on Single Industry Farm—Average Cost Data Are an Unsafe Guide for all Conditions—Methods of Procedure in Making Cost of Production Studies—Examples of Costs of Producing Field Crops—Reporting Items in Terms of Time or Quantity—Costs of Producing Field Crops—Nebraska Costs: Corn, Wheat, Oats, Hay: 1909-10—Minnesota Costs: Barley, Clover, Corn, Ensilage, Flaxseed, Hay, Hemp, Mangels, Potatoes: 1902-1907—South Carolina Costs: Cotton, Corn, Oats, Hay, Cowpea Seed, Wheat 1914-15—Texas Costs: Cotton, Corn, Oats, Hay, Sorghums: 1914—Kentucky Costs: Tobacco, Stock, Dairy, Mixed: 1913—Georgia Costs, Corn, Oats, Sugar Cane, Potatoes, Watermelons; 1914—Missouri Costs: Corn, Oats, Wheat, Rye, Clover, Timothy and Alfalfa Hay, Soy Beans, and Cowpea Hay—Costs of Producing Sugar Beets—Costs of Producing Cotton—Costs of Producing Wheat—Costs of Producing California Field Crops: 1915 and 1919—Costs of Producing Fruit Crops—Costs of Producing Apples: Washington, Colorado, Oregon, Idaho, 1914-15—Indiana Apple Costs: 1911-12—West Virginia Peach Costs: 1912—Nebraska Spraying Costs: 1913, 14, 15—Costs of California Fruits: 1915 and 1919—California Citrus Costs: 1913, 14, 15, 16—Costs of Producing Vegetables and Truck Crops—California Vegetable Costs—Utah Tomato Costs.	

CHAPTER XIX

COSTS OF PRODUCING LIVE STOCK AND STOCK PRODUCTS: MISCELLANEOUS COSTS	435
Cost of Fattening Beef—Summary—Cost of Producing Hogs—Costs of Raising Dairy Heifers—Costs of Raising Pullets—Costs of Fattening Lambs—California Cost Data: Beef, Sheep and Swine—Financial Items of California Beef Business (Average Figures)—Cost Data of California Dairying Business (Average Figures)—Costs of Producing Milk—Reference to Outline for Conducting Cost of Milk Production Studies—Miscellaneous Costs—Costs of Clearing Land, Minnesota, Michigan, Wisconsin, Reported 1914—Cost of Tile Drainage, Ohio, 1910-11—Labor Requirements in Connection with Live Stock—Labor Requirements of Dairy Cows—Labor Requirements of Work Horses—Machinery Costs—U. S. Hauling Costs: 1905-6.	

CHAPTER XX

MARKETING METHODS	469
Imports and Exports as Guides to Conditions—The Effect upon Exports of World War Conditions—Effects of Exports upon Prices—Distribution Terms—Market Trend—How Farm Products Are Marketed—Study the Important Products First—Marketing Methods Vary—Marketing Agencies—Ways of Marketing—Choosing the Marketing Method—Inventory Method of Testing Marketing Agencies—Similar Tests of Other Agencies—Present System of Marketing Is Sound—Visiting the Markets—Value of Visiting the Markets—Few Growers Visit Their Markets—Influence of Weather upon Sales—Packages and Containers Vary—Studying Types of Containers—Examples of Market Containers and Packages—The Best Container—Shipping Carload Lots.	

CHAPTER XXI

MARKET QUOTATIONS.	Page 497
Reasons Why Market Quotations Are Fallible—Quotations of Different Markets Should Be Studied—Quotations Indicate Market Demands—Sources of Market Quotations—Examples—How Obtained—Symbols of Terms Used—Past Quotations a Guide to Selling—Five-year Periods to Be Used in Studying Past Quotations—Examples of Past Quotations as a Guide to Selling—Regular and Irregular Fluctuations—The Natural Market Course—Periods of High and Low Prices for Various Farm Products on Different Markets—Holding Products for High Prices—Money Difference in Periods of High and Low Prices—Use of Past Quotations as a Normal in Reporting Prices—Prorating the Consumer's Dollar—Prorating Money Spent for Oranges—Prorating Money Spent for Apples—Proration of Money Spent for Onions—Comparison of Retail Prices and Farmers' Receipts—Reasons for Price Spread Between Producer and Consumer—Conclusion—Partial List of References to Literature upon Marketing.	

CHAPTER XXII

FARM LABOR.	517
The Farm Management Aspect of Farm Labor—Interest in Labor Depends on Viewpoint—Five Points of View Concerning Farm Labor—Conflicting Ideas Result from Different Viewpoints—The Farm Manager's Responsibility and Viewpoint—Classes of Farm Labor—White—Hobo or Tramp—Italian and Portuguese—Negro—Mexican—Indian—Japanese—Hindu—Chinese—Kind of Help Needed by Farmers—Classification of Farmers' Labor Needs—Transient and Seasonal Labor Needs—The Worker's Viewpoint—Student Experiences Indicate the Worker's Viewpoint—Student Experiences as Farm Laborers—Student Adverse Comments—What Constitutes Good Working Conditions—Working Hours—Boarding the Men—Example of Kitchen Supplies Cost of Boarding Men—Keeping Track of Kitchen Costs and Practices—Examples of Cost of Boarding Help—Housing Farm Help—Improving Quarters Helps Individual Employer—Supervision of Farm Help—Wages Paid to Farm Help in United States—Sectional Variations in Wage Scales—Value of Board as a Part of Wages—What Constitutes a Satisfactory Wage Scale—Paying the Men—Use of Bonuses or Premiums—Handling Labor—Farmers' Part in Getting Good Farm Labor—Selection of Good Foremen Essential—Personal Qualities Necessary to the Successful Handling of Men—Personal Relation of Employer to Men—Discouraging Tattling—A Normal Day's Work—Conditions Affecting a Day's Work—Providing Equipment for Farm Help—Efficient Use of Equipment—Locating Labor Supplies.	

CHAPTER XXIII

FARM TENANCY	559
Definitions Used in Farm Tenancy—Utilization of Tenancy—Testing Proposed Tenancy Plans—Tenancy as a Means of Getting Started in Farming—Tenancy Provides a Test of the Attractiveness of Farming—Tenancy Provides a Preliminary Test Prior to Purchasing Farm Lands—The Principal Kinds of Tenure—Cash Rent—Standing Rent—Share Rent—Share-cash—Cropping Rent—Preferences for Either Share or Cash Rent—Reasons Given for Preferring Share Tenancy—Reasons Given for Preferring	

CONTENTS

xix

Cash Tenancy—Length of Tenure—Short Tenure Lease Favored—Period of Tenure—Influence of Annual Leases on Changing of Tenants—Conditions When Long Term Leases Are Favored—Example of Long Term Leases—Advantages—Advantages of the Short Term Lease—Length of Lease Depends upon Circumstances—Leasing Practices in the United States—Methods of Sharing Crops and Stock Products—Field Crops—Orchard Fruits—Live Stock and Stock Products—Methods of Sharing Pasture—Dairy Farms—Dairy Leasing Practices—Wisconsin and Illinois—Stock Farms Practices—General Farms Leasing Practices—Leasing Practices in the Cotton Belt—Fundamental Factors in Leasing Farm Lands.

Pages

CHAPTER XXIV

FARM LEASE FORMS 575

Examples of Common Cash and Share Leases—Example of Partnership Lease—Example of Stock-share Lease—What the Lease Should Contain—Form of the Lease—Legal Requirements—Points to Be Considered in the Farm Lease—General Details—Reservations—Assurances and Guaranties by the Tenant—By the Landlord—Agreements with Respect to Credit Furnished by the Landlord—Respective Contributions by Each Party to Operating Capital—Adjustments with Respect to Property Owned in Joint Account—Respective Contributions by Each Party to Expenses—Payment of Rent—Privileges for which Special Rent Is or Is Not to Be Paid—Specifications with Respect to the Care, Use, and Improvement of Real Estate and Arrangement for Labor and Materials as Needed for These Purposes—Specifications with Respect to Farm Methods and Procedure—Provision for Supervision—Procedure at Termination of Lease—Enforcement of Contract—Adjustment of Differences—Provisions to Insure Enforcement—Final Details—Proposed Standard Contract Forms for Leases—Suggested Division of Responsibility in Investment and Interest in Income—The Partnership Lease—Example of How a Partnership Lease Works—The Empirical Method—Rights of Each Party to a Lease Under the Empirical Method—Advocates of the Empirical Method—Objection to the Empirical Method—Points to be Observed in Taking a Diversified Enterprise—Estimating Rental Rates for Farm Fully Equipped.

CHAPTER XXV

FARM LAW 601

What Law Is—Written Law—Unwritten Law—Farm Law—Classification of Farm Law—Field so Extensive, Necessary to Limit Discussion—Our Attention Confined to Regulative Legislation—Conceptions of the Law—Legal Definition of a Farmer—Legal Definition of a Farm—Boundaries—Waters of the Farm—Riparian—Underground Waters—Kinds of Title to Farm Lands—Title by Grant—Rights of Way (Appurtenance)—Farm Workers and Laborers—Legal Status of Crops—Laws Relating to Live Stock—Sales—Factors or Commission Merchants—State Legislation—County and Municipal Regulations—Conclusion to Farm Law.

PART III

INTRODUCTION TO PART III 625

CONTENTS

CHAPTER XXVI

THE FARM MANAGER.	PA 627
Selling Service: Duties: Qualification: Outlook—Definition and Status of the Farm Manager—Selling Service—What Does an Employer Desire in an Employee?—What Has a College Trained Man to Offer?—A College Education—Looking for a Position—Choosing the Employer—Application—Examples of Letters of Application—Personal Interview—References and Testimonials—Selling Ability Paramount—Business Estate Administration—Reviewing Going Concerns—Salaries—Profit Sharing for Managers—Utilization of Salary—In Conclusion.	

CHAPTER XXVII

INDEX TO REFERENCES	647
INDEX	667

33. Kentucky Agric. Exp. Sta., Circular 14, "The Home Garden in Kentucky," C. S. Adams, March, 1917.
34. R. H. Taylor, then Assistant Professor in Pomology in the University of California, in a personal letter to the author.

Chapter 6

THE SOIL FACTOR

35. U. S. D. A., Farmers' Bulletin 986, "Farm Practices that Increase Crop Yields the Gulf Coast Region," M. A. Crosby, June, 1918.
36. U. S. D. A., Farmers' Bulletin 716, "Management of Sandy-land Farms in Northern Indiana and Southern Michigan," J. A. Drake, June, 1916.
37. U. S. D. A., Farmers' Bulletin 924, "A Simple Way to Increase Crop Yields" (Methods of Coastal Plain Section of Central Atlantic States), H. A. Miller, Feb., 1918.
38. U. S. D. A., Farmers' Bulletin 981, "Farm Practices that Increase Crop Yields in Kentucky and Tennessee," J. H. Arnold, Nov., 1918.
39. For the information constituting the basis for these paragraphs, credit is due to:—J. H. Arnold, G. A. Billings, F. H. Branch, D. A. Brodie, Levi Chubbuck, R. W. Clothier, M. A. Crosby, J. A. Drake, Byron Hunter, S. O. Jayne, H. A. Miller, H. H. Mowry, A. G. Smith, and R. N. Thompson, of the Federal Office of Farm Management, Feb., 1919.

Chapter 7

THE CALENDAR OF OPERATIONS

40. U. S. D. A., Office of Farm Management, Bulletin 528, "Seasonal Distribution of Farm Labor in Chester Co., Pa.," George A. Billings, April, 1917.
41. U. S. D. A., Office of Farm Management, Bulletin 654, "Farm Organization in the Irrigated Valleys of Southern Arizona," R. W. Clothier, June, 1918.
42. Chart of U. S. D. A., Office of Farm Management, Bulletin 528, see reference 31.
43. U. S. D. A., Yearbook, "A Graphic Summary of Seasonal Work on Farm Crops," O. E. Baker, C. F. Brooks and R. G. Hainsworth, 1917.
44. U. S. D. A., Farmers' Bulletin 985, "Systems of Hog Farming in the Southeastern States," E. S. Haskell, June, 1918.

Chapter 8

CHOICE OF FARM EQUIPMENT

45. U. S. D. A., Office of Farm Management, Professional Paper 423, "Labor Requirements of Dairy Farms as Influenced by Milking Machines," H. N. Humphrey, Nov., 1916.

Chapter 9

BUILDING EQUIPMENT

46. Kentucky Agric. Exp. Sta., Bulletin 179, "Construction and Equipment of Dairy Barns," W. D. Nicholls, June, 1914.
47. Texas Agric. Exp. Sta., Bulletin 210, "Barns for Work Animals," B. Youngblood, Jan., 1917.
48. U. S. D. A., Farmers' Bulletin 126, "Practical Suggestions for Farm Buildings," George G. Hill, Feb., 1901.

49. Two publications used in this connection are Farmers' Bulletin 1121, "Factors that Make for Success in Farming in the South," C. L. Goodrick, Sept., 1920, and Farmers' Bulletin 1132, "Planning the Farmstead," M. C. Betts and W. R. Humphries, of the Division of Rural Engineering, Bureau of Public Roads, Aug., 1920.

50. U. S. D. A., Farmers' Bulletin 1087, "Beautifying the Farmstead," F. L. Mulford, March, 1920.

51. This section from Farmers' Bulletin 1,132, see 49 above.

Chapter 10

FENCING, WORK STOCK, IMPLEMENTS AND MACHINERY

52. U. S. D. A., Farmers' Bulletin 321, "Cost of Fencing Farms in the North Central States," H. N. Humphrey, Jan., 1916.

53. U. S. D. A., Farmers' Bulletin 816, "Minor Articles of Farm Equipment," H. N. Humphrey and A. P. Yerkes, May, 1917.

54. Michigan Agric. Exp. Sta., Bulletin 277, "Studies in the Cost of Market Milk Production," A. C. Anderson and F. T. Riddell, Dec., 1916.

55. U. S. D. A., Office of Farm Management, Professional Paper 501, "A Study in the Cost of Producing Milk on Four Dairy Farms, Located in Wisconsin, Michigan, Pennsylvania, and North Carolina," M. O. Cooper, C. M. Bennett, L. M. Church, Feb., 1917.

56. U. S. D. A., Office of Farm Management, Bulletin 500, "The Cost of Producing Apples in Western Colorado," S. M. Thomson and G. H. Miller, March, 1917.

57. U. S. D. A., Office of Farm Management, Bulletin 518, "The Cost of Producing Apples in Hood River Valley," S. M. Thomson and G. H. Miller, March, 1917.

58. U. S. D. A., Office of Farm Management, Bulletin 614, "Cost of Producing Apples in Yakima Valley, Washington," G. H. Miller and S. M. Thomson, April, 1918.

59. U. S. D. A., Office of Farm Management, Bulletin 636, "Cost of Production of Apples in the Payette Valley, Idaho," S. M. Thomson and G. H. Miller, May, 1918.

Chapter 11

THE CAPITAL REQUIREMENTS OF FARMING

60. U. S. D. A., Office of Farm Management, Bulletin 582, "Farm Management and Farm Profits on Irrigated Farms in the Provo Area (Utah)," L. G. Connor, Jan., 1918.

61. From U. S. D. A., Office of Farm Management, Bulletins 446, 500, 518, 614, 638. Bulletin 446 is "The Cost of Producing Apples in Wenatchee Valley, Washington," G. H. Miller and S. M. Thomson, Jan., 1917. For descriptions of other bulletins see references:

Bulletin 500—See reference 56

Bulletin 518—See reference 57

Bulletin 614—See reference 58

Bulletin 636—See reference 59

62. U. S. D. A., Office of Markets and Rural Organization, Bulletin 384, "Costs and Sources of Farm-mortgage Loans in the United States," C. W. Thompson, 1916.

63. U. S. D. A., Bulletin 593, "How to Use Farm Credit," T. N. Carver, June 3, 1914.

64. U. S. D. A., Office of Markets and Rural Organization, Circular 60, "Amortization Methods for Farm Mortgage Loans," L. E. Truesdell, July, 1914.

Chapter 12

FARM PROFITS

65. U. S. D. A., Office of Farm Management, Professional Paper 716, "A Five Year Farm Management Survey in Palmer Township, Washington County, Ohio, 1912-1916," H. W. Hawthorne, Sept. 1918.
66. U. S. D. A., Office of Farm Management, Professional Paper 713, "A Study of Farming in Southwestern Kentucky," J. H. Arnold, Oct., 1918.
67. Utah Agric. College, Bulletin 160, "Important Factors in the Operation of Irrigated Utah Farms," E. B. Brossard, Sept., 1917.
68. University of Minnesota, Agric. Exp. Sta., Bulletin 162, "The Cost of Living on Minnesota Farms, 1905-1914," F. W. Peck, Aug., 1916.
69. U. S. D. A., Office of Farm Management, Bulletin 635, "What the Farm Contributes Directly to the Farmer's Living," W. C. Funk, Dec., 1914, and Professional Paper 410, "Value to Farm Families of Food, Fuel and Use of House," W. C. Funk, 1916.

Chapter 13

FACTORS AFFECTING PROFITS

70. U. S. D. A., Office of Farm Management, Bulletin 425, "Farming on the Cut-over Lands of Michigan, Wisconsin and Minnesota," J. C. McDowell and W. B. Walker, Oct., 1916.
71. Cornell University, Bulletin 295, "An Agricultural Survey. Townships of Ithaca, Dryden, Danby, and Lansing, Tompkins Co., N. Y.," G. F. Warren and K. C. Livermore, assisted by C. M. Bennett, H. N. Kutschbach, E. H. Thomson, F. E. Robertson, E. L. Baker, March, 1911.
72. U. S. D. A., Farmers' Bulletin 1139, "A Method of Analyzing the Farm Business," H. M. Dixon and H. W. Hawthorne, June, 1920.
73. U. S. D. A., Office of Farm Management, Bulletin 482, "Farming in the Bluegrass Region (of Kentucky)," J. H. Arnold and Frank Montgomery, Feb., 1917.
74. U. S. D. A., Office of Farm Management, Bulletin 651, "A Farm Management Study in Anderson County, South Carolina," A. G. Smith, May, 1918.
75. U. S. D. A., Office of Farm Management, Bulletin 705, "Profitable Management of General Farms in the Willamette Valley, Oregon," Byron Hunter and S. O. Jayne, July, 1918.
76. Averaged from U. S. D. A., Office of Farm Management, Bulletin 425. See reference 70.

(No references in Chapter 14).

Chapter 15

FARM MANAGEMENT SURVEYS

77. Cornell University, Agric. Exp. Sta., Bulletin 344, "Agricultural Surveys," G. F. Warren, April, 1914.
78. U. S. D. A., Office of Farm Management, Professional Paper 529, "Validity of the Survey Method of Research," W. J. Spillman, April, 1917.

Chapter 16

FARM BOOKKEEPING

79. "Farm Management," G. F. Warren, published by Macmillan Co., 1913.
80. "Farm Management," Andrew Boss, published by Lyons and Carnahan, 1914.

81. U. S. D. A., Farmers' Bulletin 511, "Farm Bookkeeping." Originally written by Edward H. Thomson, Oct., 1912. Revised by J. S. Ball, June, 1920.
82. U. S. D. A., Farmers' Bulletin 572, "A System of Farm Cost Accounting," C. E. Ladd, March, 1914. Revised by J. S. Ball, March, 1920.
83. U. S. D. A., Farmers' Bulletin 782, "The Use of a Diary for Farm Accounts," E. H. Thomson, Jan., 1917. Revised by O. A. Juve, 1920.
84. U. S. D. A., Yearbook, Office of Farm Management, "Value of Records to the Farmer," J. S. Ball, 1917.
85. Oregon Agric. College, Oregon Agricultural Press, "The Business Side of Farming—Part 1—Farm Records," J. A. Bexell, 1911.
86. Montana Agric. College, Circular 43, "Farm Records and Accounts," E. L. Currier, Feb., 1915.
87. University of Missouri, Circular 84, "How to Keep Farm Accounts," R. M. Green and D. C. Wood, April, 1918.
88. Largely from Farmers' Bulletin 1139. See reference 72.
89. U. S. D. A., Farmers' Bulletin 1182, "Farm Inventories," J. S. Ball, Dec., 1920.

Chapter 17

FARM COST ACCOUNTING

90. Generous extracts have been made from U. S. D. A., Farmers' Bulletin 572. See reference 82.

Chapter 18

COSTS OF PRODUCING CROPS

91. Committee consisted of Dr. J. I. Falconer, Ohio State University, Dr. H. C. Taylor, University of Wisconsin, Dr. G. F. Warren, Cornell University, Professor Andrew Boss, University of Minnesota, Professor J. A. Foord, Massachusetts Agriculture College, Professor R. L. Adams, University of California, G. I. Christie, Nat C. Murray, C. W. Thompson, E. H. Thomson, and other representatives of the U. S. D. A.
92. Largely from U. S. D. A., Office of Secretary, Circular 132, "Report of Committee to Consider Plan of Organization, Scope of Work, and Projects for the Office of Farm Management, and Methods of Procedure in Making Cost of Production Studies," March, 1919.
93. University of Nebraska, Agric. Exp. Sta., Bulletin 122, "Cost of Growing Crops in Nebraska," C. W. Pugsley, June 30, 1911.
94. Results by Edward C. Parker and Thomas P. Cooper, published as U. S. D. A., Bureau of Statistics, Bulletin 73, "The Cost of Producing Minnesota Farm Products, 1902-1907," 1909.
95. University of Missouri, Bulletin 165, "Cost of Producing Some Missouri Farm Crops," O. R. Johnson and R. M. Green, Aug., 1919.
96. U. S. D. A., Office of Farm Management and Farm Economics, Bulletin 896, "The Cost of Producing Cotton—842 Records, 1918," L. A. Moorhouse and M. R. Cooper, Nov., 1920.
97. This material is from mimeographed "Farm Management Notes," University of California, R. L. Adams.
98. Reported in Purdue University, Bulletin 194, "The Indiana Farm Orchard—Operating Costs and Methods," C. G. Woodbury, M. W. Richards, and H. J. Reed, Sept., 1916.
99. U. S. D. A., Bureau of Plant Industry, Bulletin 29, "Crew Work, Costs, and Returns in Commercial Orchardling in West Virginia," J. H. Arnold, Nov., 1913.

100. University of California, College of Agric., Circular 130, "Cabbage Growing in California," S. S. Rogers, June, 1915.
101. University of California, College of Agriculture, Circular 147, "Tomato Growing in California," S. S. Rogers, Feb., 1916.
102. University of California, College of Agriculture, Circular 160, "Lettuce Growing in California," S. S. Rogers, March, 1917.
103. University of California, College of Agriculture, unnumbered circular, "Spinach Growing in California," S. S. Rogers, February, 1918.
104. University of California, College of Agriculture, Circular 199, "Onion Growing in California," S. S. Rogers, May, 1918.

Chapter 19

COSTS OF PRODUCING STOCK AND STOCK PRODUCTS: MISCELLANEOUS COSTS

105. The material is a part of an exhaustive presentation of the complete data which form a 183-page publication put out under date of December, 1919 by the Federal Trade Commission in its "Report on the Meat-packing Industry: Part VI," printed by the Government Printing Office, Washington, D. C. (1920). The pamphlet gives the details (1st) of a three-year study of the cost of producing calves and yearlings in the corn belt states, and the cost of producing beef animals on twelve western ranches; (2nd) 3 studies of costs of fattening and finishing cattle on corn-belt farms; and (3rd) cost of marketing live stock. The publication, which is illustrated, gives in detail the findings of trained investigators from the federal Office of Farm Management, the Bureau of Animal Industry, and the Bureau of Markets who were detailed to make these specific studies.
106. Ohio Experiment Station, Bulletin 289, "Raising Dairy Heifers," C. C. Hayden, August, 1915.
107. Purdue University, Agric. Exp. Sta., Bulletin 214, "Cost of Raising White Plymouth Rocks," A. G. Phillips, April, 1918.
108. Michigan Agric. College, Bulletin 286, "Studies in the Cost of Milk Production, No. 2," F. T. Riddell and A. C. Anderson, Jan., 1920.
109. Vermont Agric. Exp. Sta., Bulletin 209, "The Cost of Producing Market Milk in 1916-17 on 212 Vermont Farms," G. F. E. Story and W. J. Tubbs, Sept., 1917.
110. Minnesota Agric. Exp. Sta., Bulletin 173, "The Cost of Milk Production," F. W. Peck and Andrew Boss, Feb., 1918.
111. Missouri Agric. Exp. Sta., Bulletin 156, "Milk Production Costs and Milk Prices," R. M. Green, D. C. Wood and A. C. Ragsdale, July, 1918.
112. New Hampshire Exp. Sta. Extension Bulletin 2, "Cost of Milk Production," Fred Rasmussen, June, 1913.
113. Massachusetts Agric. Exp. Sta., Bulletin 145, "Record of the Station Dairy Herd and the Cost of Milk Production," J. B. Lindsey, Sept., 1913.
114. Connecticut (Stoors) Exp. Sta., Bulletin 73, "Records of a Dairy Herd for Five Years," J. M. Trueman, June, 1912.
115. Reported in Cornell University, Bulletin 377, "Cost Accounts on Some New York Farms," C. E. Ladd, June, 1916.
116. U. S. D. A., Dairy Division, Dept. Bulletin 858, "Requirements and Cost of Producing Market Milk in Northwestern Indiana," J. B. Bain and R. J. Posson, July, 1920.
117. University of Illinois, Agric. Exp. Sta., Bulletin 224, "The Seasonal Cost of Milk Production," F. A. Pearson, Dec., 1919.
118. Cornell University, Lesson 142 of Farm Management Series in "The Cornell Reading Course for the Farm," E. G. Misner, Feb., 1919.

119. U. S. D. A., Bureau of Plant Industry, Bulletin 91, "Cost and Methods of Clearing Land in the Lake States," Harry Thompson and Earl D. Strait, May, 1914.
120. Ohio Agric. Exp. Sta., Circular 147, "The Cost of Tile Drainage," L. H. Goddard and H. O. Tiffany, Sept., 1914.
121. Missouri Agric. Exp. Sta., Bulletin 152, "Cost of Horse Labor on the Farm," O. R. Johnson and R. M. Green, March, 1918.
122. U. S. D. A., Office of Farm Management, Bulletin 560, "Cost of Keeping Horses and Cost of Horse Labor," M. R. Cooper, July, 1917.
123. Ohio Agric. Exp. Sta., Bulletin 266, "Labor Cost of Producing Corn in Ohio," L. H. Goddard and W. L. Elser, Dec., 1914.
124. Colorado Agric. Exp. Station, Bulletin 203, "Farm Costs on the Colorado Agricultural College Farm," Alvin Keyser, Dec., 1914.
125. U. S. D. A., Office of Farm Management, Bulletin 338, "Machinery Cost of Farm Operations in Western New York," H. H. Mowry, Jan., 1916.
126. U. S. D. A., Bureau of Statistics, Bulletin 49, "Costs of Hauling Crops from Farms and Shipping Points," Frank Andrews, Feb., 1907.

Chapter 20

MARKETING FARM PRODUCTS

127. From U. S. D. A., Year book, 1917.
128. From U. S. D. A., "The Market Reporter," July 10, 1920.
129. From manuscript by Mr. Scott B. Harrington, student in the University of California, Dec., 1920.
130. Prepared for the author by Mr. H. C. Filley of the University of Nebraska, December 15, 1920.
131. Prepared for the author by Mr. Cap E. Miller of North Dakota Agricultural College, December 15, 1920.
132. Prepared by the University of Illinois, Department of Farm Organization and Management, Feb. 1, 1921.
133. As used in "Wallace's Farmer," 1920.
134. Article in "Pacific Rural Press," Albert Lindley, Oct. 4, 1919.
135. U. S. D. A., Bureau of Markets, Document 1, "Work of the Office of Markets and Rural Organization," Charles J. Brand, July, 1915.
136. California Exp. Sta., Circular 193, "A Study of Farm Labor in California," R. L. Adams and T. R. Kelley, March, 1918.
137. U. S. D. A., Farmers' Bulletin 635, "What the Farm Contributes Directly to the Farmer's Living," W. C. Funk, Dec. 24, 1914.
138. U. S. D. A., "Monthly Crop Reporter," Dec., 1919.
139. U. S. D. A., Bureau of Statistics.
140. U. S. D. A., "Crop Reporter," Mar., 1911, Mar., 1913, and Dec., 1919.
141. U. S. D. A., Farmers' Bulletins 987, 989, 1008. Farmers' Bulletin 987 is entitled "Labor Saving Practices in Hay Making." It is by H. B. McClure, June, 1918. Farmers' Bulletin 989 is "Better Uses of Man Power on the Farm," by W. J. Spillman, June, 1918. Farmers' Bulletin 1008 is "Saving Farm Labor by Harvesting Crops with Livestock," by J. A. Drake, Dec. 1918.

Chapters 23 and 24

FARM TENANCY

142. U. S. D. A., Yearbook, "Farm Tenancy in the United States," W. J. Spillman and E. A. Goldenweiser, 1916.
143. Introductory paragraphs from Farmers' Bulletin 1164, "The Farm Lease Contract," L. C. Gray and H. A. Turner, Oct., 1920.

144. U. S. D. A., Office of Farm Management, Bulletin 650, "Lease Contracts Used in Renting Land on Shares," E. V. Wilcox, Feb., 1918.
145. Taken from U. S. D. A., Office of Farm Management, Bulletin 603, "A Study of Share-rented Dairy Farms in Green County, Wisconsin, and Kane County, Illinois," E. A. Boeger, April, 1918.
146. U. S. D. A., Office of Farm Management, Professional Paper 337, "The Study of the Tenant Systems of Farming in the Yazoo-Mississippi Delta," E. A. Boeger and E. A. Goldenweiser, Jan. 13, 1916.
147. Largely from Farmers' Bulletin 1164. See reference 143.
148. University of Minnesota, Bulletin 178, "Farm Tenancy and Leases," A. H. Benton, Dec., 1918.
149. Missouri Agric. Exp. Sta., Bulletin 167, "Renting Lands in Missouri," O. R. Johnson and R. M. Green, Feb., 1920.
150. University of Wisconsin, Research Bulletin 47, "Farm Leasing Systems in Wisconsin," B. H. Hubbard and J. D. Black, Oct., 1920.

Chapter 25

FARM LAW

151. "Law for the American Farmer," John B. Green, Macmillan Company, 1912. The section "Conceptions of the Law" is largely from this book.
152. The author is indebted for help in formulating ideas of constructive farmer legislation to the following:
- Professor H. C. Filley, University of Nebraska.
- Professor Frank App, New Jersey Experiment Station.
- Professor O. R. Johnson, University of Missouri.
- Professor Andrew Boss, University of Minnesota.
- Professor G. E. Thompson, University of Arizona.
- Professor H. E. Babcock, Cornell University.
- Doctor C. L. Goodrich, Federal Office of Farm Management and Farm Economics.

Chapter 26

THE FARM MANAGER

153. Professor H. E. Van Norman, Dean of the University of California Farm School, Davis, California.
154. Extracted from "The Living Cost," Earl G. Manning.

INDEX

A

- Abstract of title, example, 80, 81
 - Agricultural economics, compared with farm management, 3
 - Alabama, cotton costs, 422, 423
 - crop rotations in use, 132
 - crop rotations recommended, 127
 - use of fertilisers, 136
 - Alfalfa, carload, 496
 - cost, California, 428
 - day's work, 549
 - detailed cost, California, 427
 - method of growing, Pennsylvania, 143
 - method of growing and data, California, 144
 - Almond, California yields and costs, 432
 - Amortisation, method, 252
 - Annual statement, description, 368
 - example, 369
 - making, 370, 371
 - Annual summary, graphic outline, 343
 - Apple orchards, capital requirements, 241
 - Apples, amount of consumers' dollar received by farmers, 511
 - carload, 494, 495
 - costs, 428, 429
 - California yields and costs, 432
 - Colorado, Oregon, Washington, Idaho, 428, 429
 - Indiana, 430
 - New York, 428, 429
 - day's work, 553
 - equipment costs, 214
 - leasing orchards, 569
 - size of loads, 468
 - Application for a position, 633
 - Apricots, California yields and costs, 432
 - carload, 494
 - day's work, 553
 - Arizona, capital needs, 239, 240
 - capital of tenants, 245
 - family living, 266
 - farm management survey, 328
 - income and capital, 284
 - income and live stock, 293
 - income and size of farm, 279
 - labor incomes, 261, 262, 265
 - state legislation, 620
 - use of green manures, 139
 - Arkansas, crop rotations for, 126
 - size of farm, 72
 - work days, 145
 - Asparagus, cost, California, 428
 - day's work, 554
- ### B
- Baling, day's work, 549
 - Banks, advantages, 250
 - as sources of capital, 246-248
 - Banks, use, 250
 - using credit, 250, 251
 - Barley, carload, 496
 - cost, California, 428
 - Minnesota, 414
 - day's work, 551
 - size of loads, 468
 - Beans, carload, 494
 - cost, California, 428
 - day's work, 550, 551
 - leasing lands, 570
 - size of loads, 468
 - Beef, California cost data, 446
 - Berries, day's work 553
 - Bibliography, list of farm management surveys, 326-334
 - Bill of materials, definitions, 166
 - making, 166
 - examples, 166
 - dairy barn, 166-169
 - horse barn, 170-171
 - Board, student findings, 528
 - adverse comments, 529
 - suggestions in boarding men, 531-537
 - examples of supplies, 533-535
 - costs, 535-537
 - value of, 541
 - Bookkeeping (see Farm Bookkeeping).
 - Broker, 473
 - Building equipment, bill of materials, 166
 - construction suggestions, 164-166
 - determined for general farm, 203-204
 - costs, 210
 - for profit making, 163
 - good and bad, 163
 - plans, 172
 - procedure in building, 164
 - proposed, 164
 - regional variation, 161
 - examples, 161
 - Buildings (also see Building Equipment), construction suggestions, 164, 166
 - costs materials, 217, 218
 - costs, Ohio, 213
 - day's work constructing, 556, 557
 - for selected business, 200, 205
 - costs, 208-212
 - grouping in farmstead, 179
 - justifying purchase, 155
 - plans, 172
 - space allotment, 174
 - spacing, 180
 - Bureau of crop estimates, 500
 - publications, 498-500
 - example, 499-500
 - Bureau of markets, monthly report, 500-501
 - publications, 514-516
 - statement of effect of export upon prices, 471-472
 - Butter, carload, 495

- Butter, imports and exports, 470
- Buying and selling farm lands, abstract of title, 80
 certificate of title, 82
 deed, 83
 selling contracts, 84
- C
- Cabbage, California costs, 433, 434
 day's work, 554
 leasing lands, 570
- Calendar of operations, definition, 142
 graphic presentations, 146
 block, 149
 chart, 146
 example, 147
 example to provide feed, 150-151
 line, 147
 example, 148
 use in determining implement and machinery needs, 195
- California, acreage for given income, 69, 70
 alfalfa, costs, 427, 428
 growing methods, 144
 beef industry, 446
 cabbage, 433, 434
 capital needs, 242-243, 246
 as tenant, 245
 of tenants, 245
 citrus yields and costs, 432, 433
 crop rotations in use, 135
 dairy industry, 445
 depreciation, 361, 362
 equipment costs, 243
 farm, expenses, 242-244
 management surveys, 333
 profits, 265
 field crops, yields and costs, 428
 fruit, standards, 621
 yields and costs, 431-432
 horse depreciation, 362
 incomes from crops, 263, 265
 labor requirements, cotton and strawberries, 102-103
 Market Commission Act, 621
 market containers, 480
 marketing oranges, 480
 peach growing methods, 144
 poultry industry, 444
 reducing labor needs, 100
 sheep industry, 447
 size, citrus groves, 72
 of farms, 73
 State Compensation Act, 623
 state legislation, 621-623
 swine industry, 448
 truck crop yields and costs, 433
 use of fertilizers, 138
 use of green manures, 139
 value perquisites, 271
- Calves, carload, 496
 data of costs, 436, 437, 440
 method of figuring costs, 435
- Cantaloupes, carload, 494
 day's work, 555
- Cantaloupes, leasing lands, 570
- Capital, by irrigation farmers, 241, 242
 cash and credit, 223
 determining needs, 224, 225
 effect of business upon, 246
 estimating and grouping needs, 225
 farm, 13
 fixed, 13
 for apple orchards, 241
 in California farming, 242, 243, 246
 in determining type of business, 32
 in selecting the farm, 64
 in tenant farming, California, 245
 in tenant farming, survey data, 244
 planning to provide, 92
 example, 92
 required as owner from surveys, 239-240
 required as owner, Ohio, 240
 safety factor, 228
 shown by expenses, 232-238
 sources, 246-249
 tabulating, 227
 example, 229-231, 232
- Carload lots, 493-496
- Cash book, 362
 description, 362
 diary form, 365-368
 examples, 366, 367
 examples, 363, 364
 in cost accounting, 376
 use of handbook, 365
- Cash rent, 562
- Cattle, costs of fattening, Illinois, 438
 costs of raising, Iowa, Missouri, Nebraska, Kansas, 436
 Illinois, Indiana, Minnesota, Iowa, Missouri, South Dakota, 437
 Nebraska, Kansas, 437
 Oklahoma, Texas, 437
 leasing, 570
 method of figuring costs, 435
 Missouri, Kansas, Nebraska, 439
 products, requirements, 39
 summary, 439
- Cereals, imports and exports, 470
- Certificate of title, example, 82-83
- Cheese, carload, 495
 imports and exports, 470
- Cherries, California yields and costs, 432
 carload, 494
 day's work, 553
- Chicago Stock Yards, 476
- Chickens, carload, 495
- Chinese as farm help, 524
- Choosing the employer, 632-633
- Citrus, California yields and costs, 432-433
 highest form of agriculture, 39
 size California groves, 72
- Classification of farming, 48
- Clearing land, costs, Minnesota, Wisconsin, Michigan, 457
- Colorado, apple costs, 428
 farm management surveys, 332-333
 horse costs, 463
 implement, 467

- Colorado, investment in orchards, 241
 labor incomes, 261
 Commercial fertilizers, analyzing, 122
 evidence of value, 128-129
 grades, 122
 pricing, 121-122
 selecting, 121
 use by farmers, 135-138
 Commission houses, 473
 Commission men, legal status, 617-618
 Conditions governing choice of industry, 42-45
 Connecticut, cost of dairy cows, 454
 milk costs, 454
 Co-operative companies, state legislation, Nebraska, 618
 Missouri, 620
 Corn, carload, 496
 costs, California, 428
 Kentucky, 418
 Minnesota, 415
 Missouri, 419
 Nebraska, 414
 South Carolina, Texas, 417
 day's work, 550
 leasing land, 567
 marketing in the Corn Belt, 478
 size of loads, 468
 Cost accounting, classes of records, 373-375
 cashbook, 375
 inventories, 375
 preliminary, 374-375
 closing books, 389-396
 example, 397-403
 comparison with bookkeeping, 342
 cost records, 340
 determining overhead, 396
 feed records, 377
 example, 388-389
 function, 372
 graphic presentation, 341
 household accounts, 385
 indexing, 377
 interpretation of results, 402
 involves estimates, 373
 labor records, 378-384
 examples, 379-385
 manure records, 378
 miscellaneous records, 385
 examples, 389-390
 opening books, 387
 test of value, 397
 time to start, 373
 value, 340
 Costs (also see Cost of Production), average data, 406
 beef, sheep, swine, California, 445-448
 building materials, 217-218
 buildings, Ohio, 213
 clearing land, 457
 dairy equipment, 221
 dairying, California, 448
 detailed apple growing, 429-430
 equipment, California farming, 243
 dairy, 207
 Ohio, 214
 Costs, equipping, apple orchards, 214
 dairy farms, Michigan, 212
 Wisconsin, Michigan, Pennsylvania, N. Carolina, 213
 fattening lambs, 445
 fencing materials, 218-219
 fruit crops, 428-433
 apples, 428-430
 California fruits, 431-432
 citrus, 432
 peach, 431
 hauling, U. S. averages, 468
 horses, 461-464
 implements, 215-216
 irrigation equipment, 210-220
 items involved, 404
 keeping a farm work horse, 461
 dairy cows, New Hampshire, Massachusetts, Connecticut, 454
 machinery and implements, 464-467
 marketing, North Dakota wheat, 480
 at Chicago stock yards, 476
 method of making, 413
 minor equipment, 219-200
 of board, 535
 Minnesota, 537
 studies in 10 states, 536
 of field crops, 413-428
 of fruit crops, 428
 of keeping work horses, 460-461
 orchard equipment, 221-222
 poultry equipment, 222
 industry, California, 444
 producing, hogs, Nebraska, Missouri, Wisconsin, Iowa, Georgia, 440, 441-442
 Illinois, 438
 Iowa, Missouri, Nebraska, Kansas, 436
 live stock, 435-448
 method of figuring, 435
 milk, 450-457
 Missouri, Kansas, Nebraska, 439
 Oklahoma, Texas, 437
 several states, 437
 summary, 439
 raising, dairy heifers, Ohio, 442-443
 pullets, Indiana, 443-444
 range illustrated, 407
 relation of work to costs, work horses, 461
 spraying, 431
 studying, 404
 tile drainage, 457
 truck crops, 433-434
 California vegetables, 433
 value of cost data, 404
 Costs of production studies (also see Costs), conducting, 406
 farm manager's interest, 405
 method of making, 408-412
 government, 408-412
 objects, 405
 value, 404
 Cotton, cost, California, 428
 Georgia, 423-424
 Georgia, Alabama, South Carolina, Texas, 422-423

- Cotton, cost, South Carolina, 417
 Texas, 417
 day's work, 550
 leasing land, 568, 573-574
 size of loads, 468
 Country collector, 473
 Cow peas, costs, South Carolina, 417
 Cows, carload, 496
 Crop index, 14
 Crop yields, effect upon income, 290-292
 Cropping rent, 562
 systems, 115
 definition, 115
 example, 116
 Crops, acre, 14
 index, 14
 diversity index, 14
 legal status, 612-613
 liability for damages to, 612-613
 rights of tenants and landlords, 613
 severing, 612
 Cucumbers, carload, 494
 Currants, day's work, 553
 Curtailing wastes, 296-299
- D
- Dairy, equipment costs, 221
 cows, cost of raising heifers, Ohio, 442-443
 depreciation, 207, 356-357
 California, 362
 Michigan, 357
 Pennsylvania, 356
 farms, costs of equipping, Michigan, North
 Carolina, Pennsylvania, Wisconsin, 212,
 213
 labor requirements, 458-459
 leasing, 570-571
 Illinois and Wisconsin, 572
 list of equipment, 201
 costs, 207
 products, imports and exports, 470-471
 Dairying, California cost data, 448-449
 day's work, 555
 labor requirements, 458
 Day's work, conditions governing, 546
 field crops, 549
 alfalfa, 549
 baling, 549
 beans, 550
 corn, 550
 cotton, 550
 flax, 550
 grain, 551
 for implements and machines, 547
 fruits, 552-554
 apples, 553
 apricots, 553
 berries, 553
 cherries, 553
 currants, 553
 cultivation, 552
 grapes, 553
 olives, 554
 peaches, 554
 Day's work, fruits, pears, 554
 prunes, 554
 spraying, 553
 strawberries, 554
 walnuts, 554
 live stock, 555-556
 dairying, 555
 poultry, 556
 sheep, 556
 miscellaneous, 556-557
 building construction, 556-557
 fencing, 556
 hauling, 557
 irrigating, 557
 poisoning gophers, 557
 sawing wood, 557
 tiling, 557
 rules for determining, 548
 vegetables, 554-555
 asparagus, 554
 cabbage, 554
 cantaloupes, 555
 onions, 555
 peas, 555
 rhubarb, 555
 string beans, 555
 sweet potatoes, 555
 tomatoes, 555
 work stock, 549
 Deed, example, 82-84
 legal definition, 607
 warranty, 609
 Definitions, bill of materials, 166
 calendar of operations, 142
 cropping systems, 115
 deed, 607
 farm, 604
 bookkeeping, 337
 farm management, 1
 manager, 627
 farmer, 603
 farmstead, 176
 financial forecasts, 300
 green manuring, 119
 humus, 119
 inventory, 348
 marketing agencies, 473-474
 rotation of crops, 115
 terms used in farm management, 13
 terms used in market quotations, 501-504
 used in farm tenancy, 559-560
 warranty deed, 609
 Delaware, crop rotations in use, 132
 use of fertilizers, 136
 use of green manures, 138
 Department of Agriculture, Minnesota, 620
 New Jersey, 619
 Depreciation, California figures, 361-362
 dairy cows, 207, 356-357, 361
 determining and prorating in cost accounts,
 392
 farm equipment, 361-362
 horses, 357-360
 machinery, 356, 361-362, 395
 of horses, Illinois, Ohio, New York, 459

- Depreciation of horses, Minnesota, 462
 New York, 463
 of implements and machinery, Ohio, New York, 465
 Texas, 467
 work horses, 206
 Distributors, 474
 Diversified farms, renting, 599
 Diversified vs. specialized farming (see Specialized vs. Diversified Farming).
 Diversity index, 14
 illustration, 15-16
 Diversity, planning to provide, 96
 examples, 96-97
- E
- Eggs (also see Poultry), carload, 495
 imports and exports, 470
 Empirical method for leasing, 593-599
 advocates, 596-599
 example, 594-595
 objections, 599
 Ensilage, costs, Minnesota, 415
 Enterprise, definition, 13
 Equipment (also see Farm Equipment), apple orchard costs, 214
 California farming, 243
 costs, 207-222
 costs, Ohio, 214
 second-hand, 206
 Estate administration, 640
 Exchanges, 474
 Expenses, farm, 13
 Experience, 25
 advantages, 26
 getting experience, 26
 as employee, 27
 as operator, 26
 best way, 30
 changing employment, 30
 from suburban trial, 27
 in partnership, 27
 minimizing, 25
 Experiment station, accepting findings, 114
 Exports, effect upon prices, 471-472
 Extensive farming, 45
- F
- Family living, costs, Minnesota, 268
 farm contributions, Nebraska, 268
 important farm contributions, 269, 272
 needs as found in Georgia, 266
 value of farm contributions in various states, 269
 variable, 273
 Farm bookkeeping, 337
 annual summary, 343
 compared with cost accounting, 342
 cost accounting (see Cost Accounting for details), definition, 337
 cost records, value, 340
 extent of record keeping by farmers, 337
 interpretation and use of results, 347
 Farm inventories, 341
 purpose, 338
 records, 348
 annual statement, 368
 cash book, 362
 inventory, 348
 scope, 339
 simple accounts, 339
 simplifying accounts, 345
 application of double entry principle, 345
 technical training, 345
 time element, 344
 types of farm records, 341
 Farm business, agricultural regions of the United States, 40
 classification, 48
 demands by different businesses, 36, 39
 factors governing selections, 31
 capital, 32
 examples, 42-45
 income, 33
 locality, 31
 personal inclinations, 34
 in different states, 86-89
 summary of factors governing choice, 46
 Farm, buying and selling, 80-84
 elements of successful farm, 67
 examinations and reports, 73, 74
 factors, 57
 earning capacity, 57
 personal, 57
 finding the farm, 56
 influence of rise in price, 67
 inherent possibilities, 66
 legal definition, 604
 physical factors, 58
 arrangement, 58
 ease and cost of upkeep, 61
 financial, 64
 healthfulness, 60
 improvements, 60
 labor, 64
 markets, 61
 neighbor, 64
 shape, 58
 soil quality, 59
 topography, 59
 waste lands, 61
 water supply, 60
 relation of use to price, 64
 score cards, 74-77
 selecting the farm, high-priced land, 55
 in established sections, 56
 right land, 55
 valuing, 77-80
 Farm equipment, costs, 208-212
 examples, 155
 buildings, 155
 corn binders, 157
 hog house, 155
 implement, 156
 milking machines, 156
 tractor, 158
 experience in selecting, 154
 factors governing selection, 152

- Farm grouping of items, 154
 influence of environment, 153
 justifying, 155
 lists for selected businesses, 200-206
- Farm expenses, corn belt study, 236
 Georgia study, 237
 in California farming, 242-244
 in irrigation farming, 241-242
 Pennsylvania study, 233
 Utah study, 235
- Farm income, as shown by farm management surveys, 261, 281
 conception of profits, 257
 effect of crop yields upon income, 290
 Kentucky, 290
 Missouri, 291
 Ohio, 291
 Oregon, 290
 survey finds, 292
 Texas, 290
 effect of size of farm area, 277
 Arizona, 279
 corn belt, 278
 eastern Nebraska, 281
 Georgia, 278
 Michigan, 280
 Michigan, Wisconsin and Minnesota, 279
 Missouri, 280
 New York, 280
 Pennsylvania, 277
 effect of use of land, equipment and labor, 285
 corn belt, 287
 Georgia, 286
 Kentucky, 288
 Michigan, 286
 Pennsylvania, 285
 Texas, 287
 Utah, 286
 effect of working capital upon income, 282
 Arizona, 284
 corn belt, 282
 Kentucky, 283
 Michigan, 284
 Missouri, 283
 Nebraska, 283
 New York, 282
 estimating, 226
 examples of farm returns, California, 265
 examples of large returns, 264
 examples of profitableness of different enterprises, 94-95
 Iowa, 95
 Ohio, 95
 Texas, 94
 West Virginia, 95
 factors affecting, 275-276
 in determining types of business, 33
 include all productions, 257
 increasing by curtailing wastes, 296
 influence of crop yields, 289
 method of estimating, 259
 per acre, California crops, 263
 producing or purchasing, 93
 quality of business, 289
 should be based on productive value only, 257
- Farm income, terms used, 13
 direct receipts, 13
 farmer's earnings, 13
 indirect receipts, 13
 labor income, 13
 net, 13
 percentage return on investment, 13
 receipts, 13
 value of perquisites, 266
 when greater profit taking is easier, 289
- Farm labor (also see Wages, Supervision, Board, Housing, Working Hours), boarding, 531-537
 bonuses, 542
 classes of farm laborers, 519-525
 Chinese, characteristics and handling, 524
 Hindus, 524
 Hobo, characteristics and handling, 519, 520
 Indian, 523
 Italians and Portuguese, characteristics and handling, 521
 Japanese, characteristics and handling, 521
 Mexican, characteristics and handling, 522, 523
 Negro, characteristics and handling, 521
 White, 519
 classes of help needed by farmers, 525-527
 examples of amount of seasonal needs, 527
 examples of time of seasonal needs, 526
 Compensation Act, California, 623
 day's work, 546-557
 handline, 542-546
 hours, 531
 housing, 537-539
 labor supplies, 558
 legal rights, 611-612
 discharging, 611
 quitting, 611
 relation to farmer, 611, 612
 satisfactory conditions, 531
 students' experiences, 528-530
 adverse comments, 528-530
 the worker's viewpoint, 527
 use of equipment, 558
 wages, 539-542
- Farm law, classification, 602
 commission men, 617
 farm law, 601
 governing farm workers, 611-612
 governing sales, 615-616
 legal definitions, 603
 boundaries, 604
 deed, 607
 farm, 604
 farmer, 603
 waters of farm, 605-607
 legal status of crops, 612-613
 legal status of live stock, 613-615
 rights of way, 610-611
 state legislation, 618
 Arizona, 620
 California, 621-623
 Minnesota, 620
 Missouri, 620

- Farm law, state legislation, Nebraska, 618-619**
 New Jersey, 619
 New York, 621
 titles to farm land, 607-610
 unwritten law, 601
 written law, 601
Farm lease (see Lease).
Farm management, changing, 10
 compared with agricultural economics, 3
 definition, 2
 functions, 7
 illustrations, 7-8
 objects, 1, 11
 place, 8
 graphic presentation, 9
 scope, 1
 sources of information, 19
 terms, 13
Farm management surveys, acreage to provide given income, 70-72
 farm practice surveys, 331
 apples, 333
 cotton, 334
 dairy, 333
 potatoes, 333
 poultry, 333
 sugar beets, 332
 Federal, 326-330
 findings on specialized vs. diversified farming, 53
 incomes as owner or tenant, 262
 list of surveys, 326-334
 possible objection, 316
 sample forms, 316-325
 showing capital requirements of farming, 239-240
 showing capital requirements of tenant farming, 244
 showing effect of crop yields upon income, 292
 showing effect of live stock returns upon income, 294
 showing effect of size of farm business upon income, 281
 showing effect of various factors upon income, 295
 showing farm profits, 261
 single year vs. continuous records, 316
 State, 330-331
 use of farmers' estimates, 316
 use, purpose, method of making, 314
Farm manager, definition, 627
 profit sharing, 643
 salaries, 643-644
 status, 627
Farm plan, advantages, 85
 influence of local conditions, examples, 86, 87-89
 corn belt, 89
 Georgia, 87
 Michigan, 88
 Utah, 88
Farm practice, definition, 13
 local conditions, 21
Farm profits (see Farm Income).
Farmer, legal definition, 603
Farming, as a home, 19
 mode of life, 17
 stability, 17
Farmstead, definition, 13, 176
 plan on paper, 183
 details, 183
 planning new, 176
 rearranging old, 176
 suggestions, 176
 acreage, 179
 axis of barns, 182
 confining stock, 182
 distance between buildings, 180
 grouping buildings, 179
 landscape effects, 182
 lanes, 182
 location and site, 176
 screens, 182
 silos, 182
 variations, 176
Feedstuff, carload, 496
Fence equipment (also see Fences), determined for general farm, 204
 factors determining kinds, 186
 gates, 188
 kinds in use, 185
 posts, 190
 requirements, 188
 wire, 189
Fences (Also see Fence Equipment), cost of materials, 218-219
 day's work building, 556
 for selected businesses, 200-205
 costs, 208-212
Field crops (also see Crops), costs, Kentucky:
 corn, tobacco, wheat, rye, hay, 418
 Minnesota: barley, clover, corn, ensilage, flaxseed, hay, hemp, mangels, potatoes, 414-416
 Missouri: corn, oats, wheat, rye, hay, sorghums, 418
 Nebraska: corn, wheat, oats, hay, 413-414
 South Carolina: cotton, corn, oats, hay, cowpeas, wheat, 417
 Texas: cotton, corn, oats, hay, sorghums, 417
 requirements, 39
Fig, California yield and costs, 432
Financial forecasts, definition, 300
 justification, 300
 limitations, 300
 method of making, 302-306
 examples, 306-313
 object, 300
Financial test, of the proposed farm proposition, 65-66
Flax, day's work, 550
Florida, crop rotations recommended, 127
Foremen, selecting, 543
Fruit, California costs, 431-432
 California legal standards, 621
 costs of producing, 428-433
 day's work, cultivating, 552
 spraying, 553

- Fruit, imports and exports, 470-471
 leasing orchards, 569
 legal requirements for containers, California, 622
 size of loads, 468
 Fundamentals, of farm management, 12
- G
- Gates, 188
 General farm, lists of equipment, 202
 costs, 209
 Georgia, capital needs, 239-240
 cotton costs, 422-424
 crop rotations for, 127
 diversity of enterprise, 96
 family living, 266
 farm expenses, 237
 farm management surveys, 327, 328
 hog costs, 441-442
 income and size of farm, 278
 income and use of equipment, 286
 labor incomes, 261, 262
 tenants' capital, 245
 Getting a job, 629-640
 Goats, carload, 496
 leasing, 571
 Grain farm, list of equipment, 201
 costs, 209
 Grapes, California yields and costs, 432
 carload, 494
 day's work, 553
 Green manuring, bacteria, 119
 definition, 119
 evidence of value, 128-129
 humus, 119
 purpose, 119
 recommended for various sections, 127-128
 use by farm manager, 140
 use by farmers, 138-139
 value of various crops, 120
- H
- Hail insurance, Nebraska, 619
 Hauling, day's work, 557
 loads, United States, 468
 Hay, carload, 496
 costs, California, 428
 Kentucky, 418
 Minnesota, 416
 Missouri, 419
 Nebraska, 414
 South Carolina, 417
 Texas, 417
 leasing land, 568
 size of loads, 468
 Healthfulness, in selecting the farm, 60
 Highways, effect on farm acreage, 62
 Hindus as farm help, 524
 Hoboes as farm help, 519
 Hogs (also see Swine), California cost data, 448
 carload, 496
 cost of producing Nebraska, Missouri, Wisconsin, Illinois, Georgia, 440, 441-442
 Hogs, imports and exports, 470
 labor requirements, 458
 leasing, 571
 marketing in Illinois, 476-478
 size of loads, 468
 Hops, cost, California, 428
 day's work, 551
 Horse work unit, 14
 Horses (also see Work Stock), appreciation and depreciation, California, 362
 Illinois, Ohio, and New York, 357
 Michigan, 358
 Minnesota, 359
 Missouri, 360
 New York, 359
 Texas, 360
 carload, 496
 costs of keeping, 460-461
 Colorado, 463
 Illinois, 461
 Minnesota, 462
 Missouri, 461-462
 Ohio, New York, 461
 New York, 463
 Texas, 463
 depreciation, 459, 462, 463
 feed requirement, 460
 labor requirements, 458, 459
 Illinois, Ohio, New York, 459
 Missouri, 459
 relation of work to costs, 461
 Illinois, Ohio, New York, 461
 versus tractors, 158-160
 Housing, beds, 538
 condemning poor quarters, 538
 depends on men, 537
 improving helps individual employer, 539
 lights, lockers, ventilation, washing facilities, 539
 limitations of small employer, 538
 separate rooms, 538
 student findings, 528
 adverse comments, 529
 Humus, definition, 119
 purpose, 120
- I
- Idaho, apple costs, 428
 farm management surveys, 332-333
 investment in orchards, 241
 labor incomes, 261
 use of crop rotations, 134
 Illinois, beef costs, 436-437-438
 capital needs, 239-240
 depreciation of horses, 459
 farm management survey, 326
 horse costs, 461
 depreciation, 357
 labor incomes, 262
 marketing hogs, 476-478
 milk costs, 456
 tenant capital, 245
 use of fertilizers, 137
 use of green manure, 139

- Implements and machinery, annual costs, Ohio,**
 465
 Colorado, 467
 Minnesota, 467
 New York, 465
 costs, 215-216
 day's work, 547-548
 rule for determining, 548
 for selected businesses, 200-205
 costs, 208-212
 selection, 193
 use of calendar of operations, example,
 195
- Imports and exports (also see Exports),** 470
 effect of world war upon, 471
- Income (see Farm Income and Profits), acreage**
 to produce given income, 69
 California example, 69-70
 influence of productivity, 70
 survey findings, 70-72
- Indiana, apple costs,** 430
 beef costs, 437
 capital needs, 239-240
 crop rotations in use, 133
 crop rotations recommended, 127
 farm management surveys, 326, 327
 labor incomes, 261, 262
 milk costs, 456
 pullet costs, 443-444
 tenants' capital, 245
 use of fertilizers, 137
 use of green manures, 139
- Indians as farm help,** 523
- Interest, commissions,** 254
 costs on implements or machinery, 465-466
 legal rates, Statutes of Limitations, 255
 by States, 255
 prevailing rates, 252
 in various states, 253
 range in rates, 254
- Inventory, definition,** 348
 determining inventory values, 351
 crops, 355
 equipment, 355
 live stock, 356
 valuing lands, 352-354
 in cost accounting, 376
 of personal preferences for farm business, 34,
 35
 sample, 349, 352
 taking, 348
 use, 341, 348
 value, 348
- Iowa, beef costs,** 436, 437
 capital needs, 239-240
 crop rotations in use, 133
 farm management survey, 325
 hog costs, 440
 incomes from different enterprises, 95
 labor incomes, 261-262
 tenants' capital, 245
 use of fertilizers, 137
 use of green manures, 139
 use of perquisites, 270-271
- Irrigation farmers, capital required,** 241-242
- Irrigation farmers, day's work,** 557
- Italians as farm help,** 521
- J**
- Japanese as farm help,** 523
- Jobbers,** 473
- K**
- Kansas, beef costs,** 436-437-438
- Kentucky, capital needs,** 239-240
 costs, 418
 crop rotations, in use, 129-132
 recommended, 128
 farm management surveys, 327, 329, 334
 field crops costs, 418
 income and capital, 283
 and crop yields, 290
 use of equipment, 288
 labor incomes, 261, 265
 perquisites, 266
 tobacco costs, 418
 use of green manures, 139
- L**
- Labor (also see Farm Labor), family labor,** 14
 handling, 544-546
 horse work unit, 14
 man work unit, 14
 planning, to provide productive work, 97
 to reduce labor requirements, 100
 productive work unit, 14
 requirements, caring for live stock, 458
 of cotton and strawberries (California),
 102-103
 for dairy cows, 458, 459
 for horses, 459
 variation in labor needs, 104
- Labor income, as a measure of profits,** 260
- Lambs (see Sheep).**
- Land Colonisation and Rural Credits Act, Cali-**
 fornia, 622
- Land, equipment, labor, effect of use upon in-**
 come, 285-288
- Land price, influence of rise,** 67
- Landscape, for farmstead,** 182
- Law (see Farm Law).**
- Leases, advantages of long term lease,** 564-565
 advantages of short term lease, 564-565
 empirical method for prorating income, 593-
 599
 advocates, 596-599
 example, 594-595
 objections, 599
 examples, 575
 cash lease, 575-576
 crop share lease, 576-577
 partnership lease, 577-579
 stock share lease, 579-582
 for diversified farms, 599
 form of lease, 582
 legal requirements, 583
 use of printed blanks, 582
 fundamental factors, 574

- Leases, length depends on conditions, 565
 long leases, 564
 example, 565
 points to be considered, 583-593
 adjusting differences, 590
 assurances and guarantees by owner, 586
 assurances and guarantees by tenant, 585-586
 care of real estate, 589
 credit furnished by landlord, 586
 enforcement, 590
 farming methods, 589
 general details, 583, 584, 591
 insuring enforcement, 590-591
 joint account property, 587
 operating capital, 586-587
 payment of rent, 588
 prorating expenses, 587-588
 reservations, 584-585
 special privileges, 588
 supervision, 589
 termination of lease, 589-590
 standard forms, 591
 the partnership lease, 591-593
 example, 592
 usual length, 563
 short term favored, influence on changing tenants, 564
- Lemons (see Citrus), carload, 494, 495
- Letters of application, examples, 633, 634-637
- Lettuce, California costs, 433
- Life insurance companies, as sources of capital, 247-248
- Literature, on marketing, 514-516
 on tractors, 160
- Live stock, animal unit, 14
 Chicago Stock Yards selling methods, 476
 effect of receipts upon income, 292
 legal status, 613-615
 agistus, 615
 estrays, 613-614
 progeny, 615
 runaways, 615
 manure produced, 123
 productive animal unit, 14
- Loans, paying by amortisation, 252
- Looking for a position, 631
- M
- Machinery, assembling and prorating for cost
 accounts, 393
 depreciation, 356, 361, 395
- Maine, rotation in use, 130
 value of perquisites, 271
- Man work unit, 14
- Management, charge for, 258
- Market containers, best, 493
 California legal requirements, 622
 California orange box, 487
 variations, 489
 examples, 491-493
- Market packages (see Market Containers).
- Market quotations, 497-504
 visiting, 486-491
- Market quotations, examples, 501
 measures used, 504
 past quotations a guide to selling, 504
 barley example, 505-506
 eggs example, 506-507
 examples, 508
 how used, 504-508
 reporting prices on basis of past quotations, 510
 studying, 497-498
 sources of data, 498
- Marketing, agencies, 481
 California legal fruit standards, 621
 Market Commission Act, 621
 carload lots, 493-496
 charting methods, 483-485
 choosing the method, 482
 desirability of knowing methods, 469
 farm products, 475-481
 California oranges, 480
 Chicago Stock Yards, 476
 Corn Belt corn, 478
 Illinois hogs, 476-478
 North Dakota wheat, 478-480
 holding for high prices, 508
 examples, 508
 imports and exports, 470-471
 selected products, 470-471
 influence of weather, 480
 literature, 514-516
 market trend, 474
 past quotations a guide, 504
 prorating the consumer's dollar, 508
 apples, 511
 onions, 512
 oranges, 510-511
 studying systems, 486-488
 system sound, 485
 terms, 473
- Maryland, crop rotations in use, 132
 use of fertilizers, 136
 use of green manures, 138
- Massachusetts, cost of dairy cows, 454
 milk costs, 454
- Mexicans as farm help, 522
- Michigan, capital needs, 239-240
 of tenants, 245
 crop rotations recommended, 127
 dairy farm equipment, 212, 213
 depreciation of dairy cows, 357
 farm management surveys, 327, 328, 329, 332
 income and capital, 284
 income and live stock, 293
 income and use of equipment, 286
 labor incomes, 261
 milk costs, 450
- Milk, cost of producing, Indiana, 456
 Illinois, 456
 Michigan, 450
 Minnesota, 452-454
 New Hampshire, Massachusetts, Connecticut, 454
 New York, 455
 Vermont, 451

- Milk, cost of producing, Wisconsin, Michigan,
 Pennsylvania, North Carolina, 451
 imports and exports, 470
 reference, 457
- Milking machines, justifying purchase, 156
- Minimum efficient unit, 68
- Minnesota, beef costs, 437
 capital needs, 239-240
 of tenants, 245
 clearing land costs, 457
 costs of board, 537
 Department of Agriculture, 620
 depreciation of horses, 358, 462
 ensilage costs, 415
 family living, 268
 farm management survey, 327
 field crops costs, 415, 416
 horse costs, 462
 depreciation, 359
 implement costs, 467
 income and live stock, 294
 income and size of farm, 279
 labor incomes, 261, 262, 265
 milk costs, 452-454
 perquisites, 268
 state legislation, 620
- Minor equipment, costs, 200, 219-220
 for selected businesses, 201-206
 costs, 208-212
 list, 198
 selecting, 198
- Mississippi, crop rotations in use, 132
 crop rotations recommended, 127
 use of fertilizers, 136
- Missouri, beef costs, 436, 437, 438
 capital needs, 239-240
 of tenants, 245
 co-operative companies, 620
 farm management surveys, 328, 330
 field crop costs, 419
 hog costs, 440
 horse costs, 461-462
 depreciation, 360
 income and capital, 283
 and crop yields, 291
 and labor, 98
 and size of farm, 280
 labor incomes, 261, 262, 264
 perquisites, 266
 state legislation, 620
- Montana, capital needs, 239-240
 of tenants, 245
 farm management surveys, 330, 331
 labor incomes, 261, 262, 265
 use of crop rotations, 133
- "Monthly Crop Reporter," 500
 "The Bureau of Markets Reporter," 500-501
- Mortgages, crop and stock, 251
 example, 251
 factors influencing, 249-250
 percentage held by banks and life insurance
 companies, 248
- Mules, carload, 496
- N
- Nebraska, beef costs, 436, 437, 438
 capital needs, 239-240
 of tenants, 245
 co-operative companies, 618
 diversity of enterprises, 97
 family living, 268
 farm management surveys, 331
 field crop costs, 413-414
 hail insurance, 619
 hog costs, 440
 income and capital, 283
 and labor, 99
 and size of farm, 281
 labor incomes, 261, 262
 state legislation, 618-619
 value perquisites, 270, 271
- Negroes as farm help, 521
- New Hampshire, capital needs, 239-240
 cost of dairy cows, 454
 farm management surveys, 326
 labor incomes, 261
 milk costs, 454
- New Jersey, capital needs, 239-240
 of tenants, 245
 crop rotations in use, 131
 department of agriculture, 619
 farm management surveys, 331, 333
 labor incomes, 261, 262
 state legislation, 619
 use of fertilizers, 136
 of green manures, 138
 value of perquisites, 271
- New Mexico, use of green manures, 139
- New York, apple costs, 428-429
 capital needs, 239-240
 of tenants, 245
 crop rotations in use, 130
 of implements, 465
 depreciation of horses, 459, 463
 farm management surveys, 330, 333
 horse costs, 461
 depreciation, 357, 359
 implement costs, 465
 income and capital, 282
 and size of farm, 280
 labor incomes, 261, 262, 265
 milk costs, 455
 state legislation, 463, 621
 use of fertilizers, 135
 use of green manures, 138
 value perquisites, 270, 271
- Non-productive land, 62
- North Carolina—dairy farm equipment, 213
 milk costs, 451
 rotations in use, 132
 use of fertilizers, 137
 of green manures, 139
 value of perquisites, 270, 271
- North Dakota, marketing wheat, 480
 value of perquisites, 271
- O
- Oats, carload, 496
 cost, California, 428

- Oats, Missouri, 419
 Nebraska, 414
 South Carolina, 417
 Texas, 417
 day's work, 551
 size of loads, 468
- Ohio, building costs, 213
 capital needs, 240
 cost of tile drains, 457
 crop rotations in use, 133
 recommended, 127
 depreciation of horses, 357, 459
 of implements, 465
 equipment costs, 214
 farm management surveys, 329, 330, 332
 heifer costs, 442-443
 horse costs, 461
 implement costs, 465
 income and crop yields, 291
 incomes from different enterprises, 95
 labor incomes, 261
 perquisites, 266
 use of fertilisers, 137
 of green manures, 139
 value of perquisites, 270, 271
- Oklahoma, beef costs, 437
- Olives, California yields and costs, 432
- Onions, amount of consumer's dollar received by farmer, 512
 California costs, 433, 434
 day's work, 555
 leasing land, 569
- Oranges (also see Citrus), amount of consumers' dollar received by farmer, 510-511
 carload, 494, 495
 marketing California oranges, 480
- Orchard, equipment costs, 221-222
 list of equipment, 200
- Oregon, apple costs, 428
 capital needs, 239-240
 farm management surveys, 329, 333
 incomes and crop yields, 290
 investment in orchards, 241
 labor incomes, 261
 use of crop rotations, 134
 fertilisers, 137
- Organising the farm business, choosing the profitable enterprise, 94
 examples, 94
 Iowa, 95
 Ohio, 95
 Texas, 94
 West Virginia, 95
 for immediate capital, 92
 gathering data, 111
 sources, 111
 individual need, 91
 local practice, 89
 planning the reorganisation of going concerns, 106-110
 suggestions, 106-110
 producing or purchasing, 93
 special program, 110
 to produce family and farm supplies, 104
 fruits, examples, 106
- Organising the farm business, to produce vegetables, plan for middle cotton belt, size necessary, 104, 105, 106
 to provide days of productive labor, examples, 97
 Missouri, 98
 Nebraska, 99
 Pennsylvania, 97
 to provide diversity, 96
 Georgia, Pennsylvania, 96
 Nebraska, 97
 to reduce labor requirements, 97
 examples, California, several states, 100, 101
 variations, 104
 use of a farm plan, 85
- P
- Packers, 474
 "Paper Farm" (see Financial Forecasts).
- Peaches, California yields and costs, 432
 carload, 494
 costs, West Virginia, 431
 method of growing and data, California, 144
- Pears, California yields and costs, 432
 carload, 494, 495
- Peas, carload, 494
 cost, California, 428
 day's work, 551
 leasing land, 570
- Pennsylvania, alfalfa growing methods, 143
 capital needs, 239-240
 crop rotations in use, 131
 depreciation of dairy cows, 356
 diversity of enterprises, 96
 farm expenses, 233
 farm management surveys, 326, 330
 horse depreciation, 358
 income and labor, 97
 income and live stock, 293
 and size of farm, 277
 and use of equipment, 285
 labor incomes, 261, 262, 264
 milk costs, 451
 tenants' capital, 245
 timothy and clover growing methods, 143
 use of fertilisers, 135
 of green manures, 138
 value of perquisites, 270, 271
 work days, 146
- Perquisites, Arizona, 266
 Georgia, 266
 Kentucky, 266
 Missouri, 266
 Nebraska, 266
 Ohio, 266
 Utah, 266
 value, 266
- Personal effects, for selected businesses, 201-206
 costs, 208-212
- Personal elements for farming success, 23
- Personal, inclination in determining type of business, 33
 use of inventory, 34, 35

- Personal, in selecting the farm, 57, 67
 test questions in selecting the farm, 68
 Personal interview, 638
 Plums, California yields and costs, 432
 carload, 494, 495
 Poisoning gophers, day's work, 557
 Portuguese as farm help, 521
 Potatoes, cost, California, 428
 Minnesota, 416
 day's work, 551
 leasing land, 569
 size of loads, 468
 Poultry, cost data, California, 444
 costs of raising pullets, Indiana, 443-444
 day's work, 556
 depreciation, California, 362
 equipment costs, 222
 leasing, 571
 Poultry farm, list of equipment, 202
 Prices, effect of export, 471-472
 Productive land, woodland, 61, 63
 Profits (see Farm Income).
 Prorating the consumer's dollar, 510-512
 Prunes, California yields and costs, 432
- R
- Receiver, 473
 References, to method conducting cost of milk
 production study, 457
 used in book, 647-655
 Reorganizing going concerns, 106
 suggestions, 107
 change in crop, 107
 financing, 109
 improving soil quality, 108
 increasing acreage, 107
 increasing yields, 110
 introduction of live stock, 107
 providing irrigation, 109
 reducing operating expenses, 110
 use of tractor, 109
 utilizing labor, 108
 Repairs, costs on implements and machinery, 465
 Retail prices, compared with farmer's receipts, 512
 reasons for spread, 512-513
 Reviewing going concerns, 641-643
 fees, 642
 Rhubarb, day's work, 555
 Rice, cost, California, 428
 size of loads, 468
 Rights of way, 610-611
 located, 610
 naked, 610
 retaining, 610-611
 Rotation of crops, arranging fields, 118
 definition, 115
 evidence of value, 128-129
 example, 116
 recommended rotations for various sections,
 124-127
 rules, 116
 use by farm managers, 140
 use by farmers, 130-135
 Rye, carload, 496
 costs, Kentucky, Missouri, 418, 419
- S
- Safety factor, in estimating capital needs, 228
 Salaries, farm managers, 643-644
 reviewing going concerns, 642
 utilizing, 644
 Sales, essentials, 615
 legal status, 615-616
 warehouse receipts, 615
 warranty, 616
 Score cards, of farmers, 74-77
 Selecting the farm business (see Farm Business).
 Selling farm lands (see Buying and Selling Farm
 Lands).
 Selling, past Quotations a guide, 504
 Selling service, 629-640
 choosing the employer, 632-633
 employer's requirements, 629-630
 looking for a position, 631-632
 references and testimonials, 639
 selling ability, 639-640
 the application, 633-638
 the interviewer, 638-639
 value of college training, 630-631
 Share vs. cash rent, 562
 Share rent, 562
 Sheep, California cost data, 447
 carload, 496
 cost of fattening lambs, 445
 day's work, 556
 depreciation, California, 362
 imports and exports, 470
 labor requirements, 458
 leasing, 571
 Shipper, 473
 Size of business, as affecting income, 277
 influence of farm area and data from several
 states, 277, 278, 279, 280, 281
 ways of increasing, 288
 Size of farm, California business, 73
 ideal size, 69
 minimum efficient unit, 68
 relatively small, 69
 to produce given income, 69
 Arkansas, 72
 California citrus, 72
 influence of productivity, 70
 irrigation districts, 72-73
 survey findings, 70
 Sinking fund, 258
 Soil quality, importance, 113
 in selecting the farm, 59
 ways of improving, 114
 justifying, 115
 Sorghum, cost, California, 428
 costs, Texas, 417
 day's work, 551
 South Carolina, capital needs, 239-240
 cotton costs, 417, 422-423
 farm management survey, 328
 field crop costs, 417
 labor incomes, 261
 rotations in use, 132
 use of fertilizers, 136
 use of green manures, 137

- South Dakota, beef costs, 437
 Soybeans, costs, Missouri, 419
 Space, allotments for buildings, 174
 Specialized farm, definition, 13
 Specialized vs. diversified farming, 47
 advantages of diversified farming, 50
 advantages of specialized farming, 50
 comparison, 51
 general farming for beginners, 54
 general farming more exacting, 54
 survey findings, 53-54
 tendency towards specialized, 51
 Speculation, 473
 Spinach, California costs, 433
 Stable manures, amount produced by live stock, 123
 cash value, 122
 classification, 123
 composition, 122
 evidence of value, 128-129
 handling, 123
 limitations, 123
 physical value, 123
 use by farm managers, 140
 use by farmers, 135-138
 using, 123
 Standing rent, 562
 State Market Commission Act, California, 621
 Steers (also see Beef), method of figuring costs, 435
 Stock beets, day's work, 551
 Straw, carload, 496
 String beans, day's work, 555
 Student experiences as farm laborers, 527
 Sugar beets, cost, California, 428
 various states, 419-422
 day's work, 551
 leasing land, 569
 Supervision, handling men, 544-545
 personal qualities, 543
 relation employer to men, 544
 selecting foremen, 543
 student findings, 528.
 adverse comments, 530
 Surveys (see Farm Management Surveys).
 Sweet peas, day's work, 551
 Sweet potatoes, California costs, 434
 day's work, 555
 Swine (see Hogs).
- T**
- Tenancy, cash rent, 14
 cropper, 14
 effects of and of farm business upon incomes, 280
 effects of capital upon incomes, 284
 effects of quality upon incomes, 291
 fundamental factors, 574
 incomes compared with ownership, 262, 280, 284
 justification for, 560-561
 kinds of tenant, 561-562
 cash rent, 562
 cropping rent, 562
 kinds of tenant, share cash rent, 562
 share rent, 562
 standing rent, 562
 landlord, 14
 lease forms, 575-593
 leasing practices in United States, 566-572
 cotton belt, 573-574
 dairies, 571-572
 field crops, 567-569
 fruits, 569
 general farms, 572
 live stock, 570-571, 572
 pasture, 571
 share rent, 14
 stock ranches, 572
 truck crops, 569-570
 length of tenure, 563-566
 owner, 14
 part owner, 14
 preferences for cash and share rents, 563
 share rent, 14
 tenant, 14
 terms used, 559-560
 when to rent, 55
 Tenant, capital required by tenant, California, 245
 capital required by tenant, survey data, 245
 Tennessee, crop rotations in use, 129, 132
 crop rotations recommended, 127
 use of green manures, 139
 Terms, used in farm management, 13-15
 illustration, 15
 Testimonials, 639
 Testing a proposed farm business, 302-313
 method, 302-306
 example, 306-313
 Texas, beef costs, 437
 capital needs, 239-240
 cotton costs, 417, 422-423
 depreciation of implements, 467
 farm management surveys, 328, 329
 field crops costs, 417
 horse costs, 463
 horse depreciation, 360
 incomes and crop yields, 290
 incomes and use of equipment, 287
 incomes from various enterprises, 94
 labor incomes, 261
 value of perquisites, 271, 270
 Tile drain, costs, Ohio, 457
 day's work, 557
 Timothy and clover, method of growing, Pennsylvania, 143
 Titles to land, accession, 608
 deed, 609
 escrow, 608
 grant, 607
 kinds, 607
 prescription, 608
 will, 608
 Tobacco, costs, Kentucky, 418
 size of loads, 468
 Tomato, California costs, 433, 434
 carload, 494
 day's work, 555

- Tomato, leasing lands, 570
 Utan costs, 434
 Topography, of the farm, 59
 Tractor, justifying purchase, 158
 literature, 160
 vs. horses, 158-160
 Truck crops, leasing lands, 509
 Type of farming, affecting profits, 276
- U
- Unearned increment, 273
 Unwritten law, 601
 Utah, capital needs, 239-240
 capital needs of tenants, 245
 crop rotations for, 126
 crop rotations in use, 133
 day's work, 146
 farm expenses, 235
 farm management surveys, 326, 328, 331, 332
 income and use of equipment, 286
 labor incomes, 261
 perquisites, 266
- V
- Value of college training, 630-631
 Valuing farm lands, factors determining value, 77
 bases, 353
 home value, 78
 potential, 79
 productive value, 78
 examples, 78-79
 for inventory purposes, 352
 cost, 353
 effect of appreciation, 355
 market, 353
 orchards, 354
 rent, 353
 for purchase, 77
 good and bad lands, 79
 Vegetable growing, requirements, 39
 Vegetables, size of loads, 468
 Vermont, milk costs, 451
 value of perquisites, 270, 271
 Virginia, crop rotations in use, 132
 use of fertilizers, 136
 Volunteer hay, requirements, 39
- W
- Wages, bonuses or premiums, 542
 paying, 541-542
 student findings, 528
 U. S. averages, 539
 regional variations, 540-541
 value of board, 541
 Walnuts, California yields and costs, 432
 Warehouse receipts, 615
 Warranty deed, 609
 Washington, apple costs, 428
 farm management surveys, 333
 investment in orchards, 241
 Washington, labor incomes, 261
 use of crop rotations, 134
 use of fertilizers, 137
 use of green manures, 139
 Waste lands, 61
 permanent and temporary, 62
 in United States, 63
 poor pasture, 64
 Watermelons, carload, 494
 Water supply, in selecting the farm, 60
 Waters, legal definition, 605
 Riparian, 606
 underground, 607
 West Virginia, crop rotations in use, 132
 farm management surveys, 330
 incomes from different enterprises, 95
 peach costs, 431
 use of green manures, 139
 What the business should pay, 257
 Wheat, carload, 496
 cost, California 428
 Kansas, Missouri, Nebraska, Minnesota,
 South Dakota, 424-426
 Nebraska, South Carolina, Kentucky,
 Missouri, 414-419
 North Dakota, 424-426
 day's work, 551
 leasing lands, 567
 marketing—North Dakota, 478-480
 method of growing, Pennsylvania, 143
 size of loads, 468
 Wholesale merchant, 473
 Wisconsin, capital needs, 239-240
 clearing land costs, 457
 dairy farm equipment, 213
 farm management surveys, 327
 hog costs, 440
 income and live stock, 292
 income and size of farm, 279
 milk costs, 451
 value of perquisites, 270, 271
 Wood, day's work sawing, 557
 Woodland, 63
 Wool, size of loads, 468
 Work days, available, Arkansas, 145
 available, Pennsylvania, 146
 available, Utah, 146
 Work schedule (see Calendar of Operations)
 Work stock, day's work, 549
 depreciation, 206
 for selected businesses, 200-205
 costs, 208-212
 mating, 193
 number required, 193
 use of calendar of operations, 196
 example, 196
 selection, 191
 working, 193
 Working capital, effect of amount upon income,
 282-284
 Working hours, average length, United States, 531
 Workmen's Compensation Act, California, 623
 Written law, 601

CHECKED
2003-01