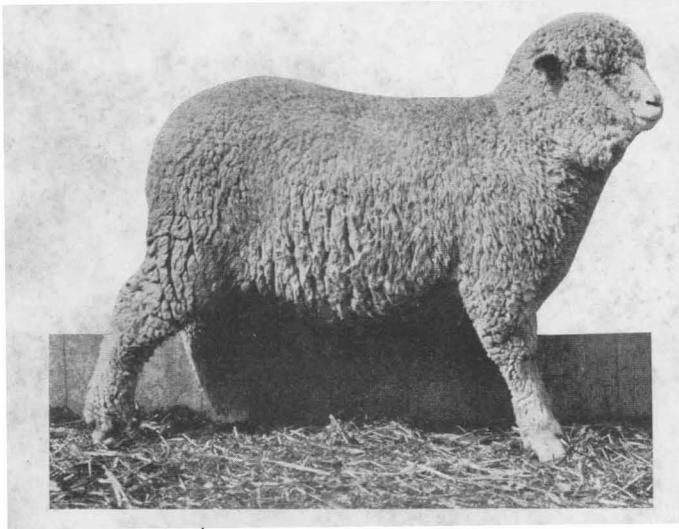


# Corn Substitutes for Fattening Lambs



AGRICULTURAL EXPERIMENT STATION  
IOWA STATE COLLEGE OF AGRICULTURE  
AND MECHANIC ARTS

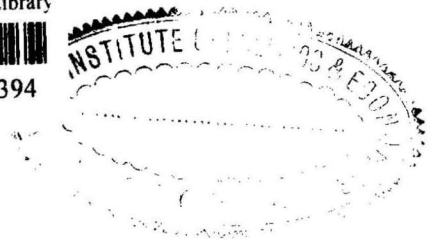
C. F. Curtiss, Director

**ANIMAL HUSBANDRY SECTION**

Dhananjayrao Gadgil Library



GIPE-PUNE-047394



Ames, Iowa

# EXPERIMENT STATION OFFICERS AND STAFF

Raymond A. Pearson, M.S.A., LL.D., President  
C. F. Curtiss, M.S.A., Director W. H. Stevenson, A.B., B.S.A., Vice-Director

**AGRICULTURAL ECONOMICS AND FARM MANAGEMENT**  
E. G. Nourse, A.B., Ph.D., Chief Knute Bjorka, M.S., Asst.  
C. L. Holmes, A.B., Ph.D., Asst. Chief C. W. Crickman, B.S., Asst.  
C. C. Taylor, B.S., Asst. W. H. Youngman, B.S., Asst.  
C. L. Benner, A.M., Asst. E. J. Working, M.S., Asst.  
John Hopkins, Jr., A.M., Asst. Frank Robotka, B.S., Asst.

**AGRICULTURAL ENGINEERING**  
J. B. Davidson, B.S., M.E., A.E., Chief E. V. Collins, B.S. in A.E., B.S. in  
Agron., Asst. Chief  
W. A. Foster, B.S. in E., B.Arch., Asst. Verne W. Stambaugh, B.S. in A.E., Re-  
search Fellow

**AGRONOMY**  
W. H. Stevenson, A.B., B.S.A., H.C.D., Paul Emerson, B.S., M.S., Ph.D., Asst.  
Chief in Soil Bacteriology  
H. D. Hughes, B.S., M.S.A., Chief in F. S. Wilkins, B.S., M.S., Asst. Chief in  
Farm Crops Farm Crops  
P. E. Brown, B.S., A.M., Ph.D., Chief in T. H. Benton, B.S., M.S., Soil Surveyor  
Soil Chemistry and Bacteriology D. S. Gray, B.S., Soil Surveyor  
L. C. Burnett, B.S.A., M.S., Chief in C. L. Orrben, B.S., Soil Surveyor  
Cereal Breeding A. M. O'Neal, Jr., B.S., Soil Surveyor  
L. W. Forman, B.S.A., M.S., Chief in J. T. Auten, B.S., Soil Analyst  
Field Experiments W. G. Baker, B.S., Field Experiments  
J. L. Robinson, B.S., M.S., Superintendent P. E. Nordaker, B.S., Field Experiments  
of Cooperative Experiments J. L. Boatman, B.S., Field Experiments  
H. W. Johnson, B.S., M.S., Ph.D., Asst. Chief in Soil Chemistry

**ANIMAL HUSBANDRY**  
H. H. Kildoe, B.S.A., M.S., Chief P. S. Shearer, B.S., Chief in Animal  
Breeding J. M. Evvard, B.S.A., M.S., Chief in  
Swine and Beef Cattle Production M. D. Helsler, B.S.A., M.S., Chief in  
Wray E. Hammond, B.S.A., M.S., Supt. Meat Investigation  
of Experiments in Animal Husbandry G. E. Weaver, M.S., Chief in Dairy Hus-  
C. C. Culbertson, B.S. in A. H., Asst. bandry  
Chief in Animal Husbandry James Waddell, B.S., M.S., Asst. Chief  
Q. W. Wallace, B.S., Assistant in Animal Fordyce Ely, B.S., M.S., Asst. in Dairy  
Husbandry Husbandry  
A. R. Lamb, M.S., Chief in Nutrition H. A. Bittenbender, B.S.A., Chief in  
A. B. Caine, M.S., Chief in Horse In- Poultry Husbandry  
vestigations R. L. Cochran, B.S., Asst. Chief

**BACTERIOLOGY**  
R. E. Buchanan, M.S., Ph. D., Chief, As- Buford H. Butcher, B. S., Graduate  
sociate in Dairy and Soil Bacteriology Asst.

**BOTANY AND PLANT PATHOLOGY**  
L. H. Pammel, B.Agr., M.S., Ph.D., Chief J. N. Martin, B.S., Ph.D., Asst.  
Charlotte M. King, Asst. Chief A. L. Bakke, B.S., M.S., Ph.D., Asst.  
I. E. Melhus, B.S., Ph.D., Chief in Plant Ray F. Crawford, B.S., Asst.  
Pathology O. H. Elmer, B.S., Asst.  
L. W. Durrell, B.S., M.S., Asst. Chief Karl F. Petsch, B.S., Field Asst.  
in Plant Pathology F. P. Sipe, B.S., Fellow

**CHEMISTRY**  
W. G. Gaessler, B.S., M.S., Acting Chief Edith Wilson, Asst.  
A. R. Lamb, B.S., M.S., Asst. J. A. Schulz, B. S., Asst.

**DAIRYING**  
M. Mortenson, B.S.A., Chief F. F. Sherwood, M.S., Asst. Chief  
B. W. Hammer, Ph.D., Chief in Dairy Merle P. Baker, B.S., Asst. in Dairying  
Bacteriology

**ENTOMOLOGY**  
Carl J. Drake, B.Sc., B.Ped., M.A., Albert Hartzell, B.S., M.S., Asst.  
Ph.D., Chief in Entomology Wallace Park, B.S., Asst. Chief in Api-  
F. A. Fenton, B.A., M.S., Ph.D., Asst. culture  
Chief in Entomology Wallace Colman, A.B., M.S., Asst.

**HORTICULTURE AND FORESTRY**  
T. J. Maney, B.S., Chief in Pomology W. C. Calvert, B.S., Asst. in Truck Crops  
Harvey L. Lantz, B.S., Asst. Chief E. A. Piester, B. S., Acting Chief in  
H. H. Plagge, B.S., Asst. in Pomology Landscape Architecture  
A. T. Erwin, M.S., Chief in Truck Corps G. B. MacDonald, B.S.F., M.F., Chief in  
Forestry

**RURAL SOCIOLOGY**  
G. H. Von Tungeln, Ph.B., M.A., Chief W. W. Weaver, B.S., Asst.  
H. G. Loomer, B.A., Asst.

**BULLETIN SECTION**  
F W. Beckman, Ph.B., Bulletin Editor Olive Sandford Alcox, Asst. Bulletin  
Editor

**PHOTOGRAPHIC SECTION**  
E. H. Richardson, Photographer

## TABLE OF CONTENTS

### PART I

|   |     |
|---|-----|
| Summary .....                                       | 206 |
| Objects of the Experiment.....                      | 207 |
| Animals Used in Test.....                           | 207 |
| Methods of Experimentation and Care of Animals..... | 207 |
| Rations Fed .....                                   | 208 |
| Feeds Described .....                               | 208 |
| Chemical Composition of Feeds.....                  | 209 |
| Methods of Feeding .....                            | 210 |
| Gains Made by Lambs.....                            | 210 |
| Average Daily Feed Eaten.....                       | 210 |
| Complete Figures on Results.....                    | 211 |
| Water Consumption of the Lambs.....                 | 212 |
| Feed Required for One Hundred Pounds Gain.....      | 212 |
| Shrinkage and Dressing Percentage of Lambs.....     | 213 |
| Packer's Comment on Carcasses.....                  | 214 |

### PART II

|   |     |
|---|-----|
| Summary .....                                       | 218 |
| Animals Used in Experiment.....                     | 219 |
| Methods of Experimentation and Care of Animals..... | 219 |
| Rations Fed .....                                   | 220 |
| Description of Feeds.....                           | 220 |
| Chemical Analysis of Feeds.....                     | 221 |
| Methods of Feeding .....                            | 221 |
| Gains Made by the Lambs.....                        | 221 |
| Complete Figures on Results.....                    | 222 |
| Water Consumption .....                             | 223 |
| Average Daily Feed Eaten.....                       | 223 |
| Feed Required for One Hundred Pounds Gain.....      | 224 |
| Shrinkage and Dressing Percentage of Lambs.....     | 225 |
| Packer's Comment on Carcasses.....                  | 226 |
| Renal Calculi Findings.....                         | 229 |