

GOVERNMENT OF INDIA  
RAILWAY DEPARTMENT

(RAILWAY BOARD)

REPORT

BY THE

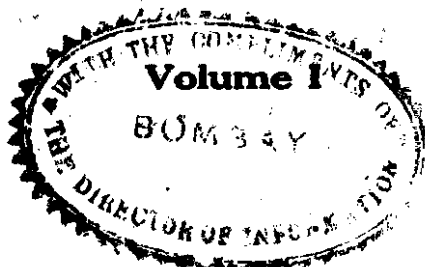
RAILWAY BOARD

ON

INDIAN RAILWAYS

FOR

1924-25



X415.2r  
A868-  
015978

CALCUTTA: GOVERNMENT OF INDIA  
CENTRAL PUBLICATION BRANCH

1925

Government of India Publications are obtainable from the Government of India Central Publication Branch, 8, Hastings Street, Calcutta and from the following Agents:—

**EUROPE.**

OFFICE OF THE HIGH COMMISSIONER FOR INDIA,

42, GROSVENOR GARDENS, LONDON, S.W. 1.

And at all Booksellers.

Dhananjayrao Gadgil Library



GIPE-PUNE-015978

**INDIA AND CEYLON.**

**Provincial Book Depôts:**

- MADRAS:**—Office of the Superintendent, Government Press, Mount Road, Madras.  
**BOMBAY:**—Office of the Superintendent of Government Printing and Stationery, Poona.  
**SIND:**—Library attached to the Office of the Commissioner in Sind, Karachi.  
**BENGAL:**—Office of the Bengal Secretariat Book Depôt, Writers' Buildings, Room No. 1, Ground Floor, Calcutta.  
**UNITED PROVINCES OF AGRA AND OUDH:**—Office of the Superintendent of Government Press, United Provinces of Agra and Oudh, Allahabad.  
**PUNJAB:**—Office of the Superintendent, Government Printing, Punjab, Lahore.  
**BURMA:**—Office of the Superintendent, Government Printing, Burma, Rangoon.  
**CENTRAL PROVINCES AND BERAR:**—Office of the Central Provinces Secretariat, Nagpur.  
**ASSAM:**—Office of the Superintendent, Assam Secretariat Press.  
**BIHAR AND ORISSA:**—Office of the Superintendent, Government Printing, Bihar and Orissa, P. O. Gulsarbagh, Patna.  
**COORG:**—Office of the Chief Commissioner of Coorg, Bangalore.  
**NORTH-WEST FRONTIER PROVINCE:**—Office of the Manager, Government Printing and Stationery, Peshawar.

- Thacker, Spink & Co., Calcutta and Simla.  
W. Newman & Co., Ltd., Calcutta.  
R. Cambray & Co., Calcutta.  
S. K. Lahiri & Co., Calcutta.  
The Indian School Supply Depôt, 309, Bow Bazar Street, Calcutta, and 226, Nawabpur, Dacca.  
Butterworth & Co. (India), Ltd., Calcutta.  
Rai M. C. Sarcar Bahadur & Sons, 90-2A., Harrison Road, Calcutta.  
The Weldon Library, 17, Park Street, Calcutta.  
Standard Literature Company, Limited, Calcutta.  
Association Press, Calcutta.  
Chakraverty, Chatterjee & Co., Ltd., 13, College Square, Calcutta.  
The Book Company, Calcutta.  
Higginbotham & Co., Madras.  
V. Kalyanarama Iyer & Co., Madras.  
P. R. Rama Iyer & Co., Madras.  
Rochouse and Sons, Madras.  
Bright & Co., Trivandrum.  
V. S. Swaminathan, Bookseller, West Tower Street, Madura.  
Thacker & Co., Ltd., Bombay.  
D. B. Taraporevala, Sons & Co., Bombay.  
Sunder Pandurang, Bombay.  
Ram Chandra Govind & Sons, Kalbadevi, Bombay.  
N. M. Tripathi & Co., Booksellers, Princess Street, Kalbadevi Road, Bombay.  
Proprietor, New Kitabkhana, Poona.  
The Manager, Oriental Book Supplying Agency, 15, Shukrawar, Poona City.  
B. S. Gondhalekar's Book Depôt, Publisher and Bookseller, Budhwar, Chawk, Poona City.  
Managing Director, Co-operative Bookstall, Booksellers and Publishers, Poona City.  
The Standard Bookstall, Karachi, Rawalpindi, Murree, Lahore, Peshawar and Quetta.  
Karsandas Narandas & Sons, Surat.  
Mangaldas & Sons, Booksellers and Publishers, Bhaga Talao, Surat.

- A. H. Wheeler & Co., Allahabad, Calcutta and Bombay.  
N. B. Mathur, Supdt., Nazir Kanun Hind Press, Allahabad.  
The North India Christian Tract and Book Society, 18, Clive Road, Allahabad.  
Ram Dayal Agarwals, 184, Katra, Allahabad.  
Manager, Newal Kishore Press, Lucknow.  
The Upper India Publishing House, Ltd., 41, Aminabad Park, Lucknow.  
Munshi Seeta Ram, Managing Proprietor, Indian Army Book Depôt, Juhi, Cawnpore.  
Rai Sahib M. Gulab Singh & Sons, Mufid-i-Am Press, Lahore and Allahabad.  
Rama Krishna & Sons, Booksellers, Anarkali, Lahore.  
Puri Brothers, Booksellers and Publishers, Katcheri Road, Lahore.  
The Tilak School Book-Shop, Lahore.  
Manager of the Imperial Book Depôt, 63, Chandney Chawk Street, Delhi.  
Oxford Book and Stationery Company, Delhi.  
Supdt., American Baptist Mission Press, Rangoon.  
Proprietor, Rangoon Times Press, Rangoon.  
The Modern Publishing House, Ltd., 30, Phayre Street, Rangoon.  
The International Buddhist Book Depôt, Post Box No. 971, Rangoon.  
Burma Book Club, Ltd., Rangoon.  
Manager, The "Hitavada," Nagpur.  
S. C. Talukdar, Proprietor, Students & Co., Cooch Behar.  
Times of Ceylon Co., Ltd.  
The Manager, Ceylon Observer, Colombo.  
The Manager, The Indian Book Shop, Benares City.  
B. C. Basak, Esq., Proprietor, Albert Library, Dacca.  
The Srivilliputtur Co-operative Trading Union, Ltd., Srivilliputtur, (Satur, S. I. R.).  
Ranwari Lal, Esq., Pakariya Street, Pilibhit, United Provinces.  
The Standard Book Depôt, Lahore, Lucknow, Nainital, Mussoorie, Dalhousie, and Ambala Cantonment.

## Books and Technical Papers published by the Railway Board.

### BOOKS.

- (1) Report by the Railway Board on Indian Railways. Published yearly. Price—Vol. I—Report, Rs. 3-8-0 or 5s. 10d. Volume II, Rs. 3-12-0 or 6s.
- (2) Classified List and Distribution Return of Officers of all Indian Railways. Published half yearly. Price Re. 1.
- (3) History of Indian Railways, constructed and in progress corrected up to 31st March 1923. Published quinquennially. Price Rs. 5-12-0.
- (4) History of Services of the Officers of the Engineer and Superior Revenue Establishment of State Railways. Published yearly. Price Rs. 2-8-0.
- (5) Pocket Edition of the Schedule of dimensions to be observed on 5' 6" and 3' 3 $\frac{3}{8}$ " and 2' 6" gauge railways in India, 1922, Rs. 1-8-0 for the 5' 6" and 3' 3 $\frac{3}{8}$ " gauge edition and Re. 1-0-0 for the 2' 6" gauge edition.
- (6) Preliminary Abstract of Statistics of Indian Railways. Published yearly. Price Rs. 1-4-0 or 2s.
- (7) Railway Statistics—Class I Indian Railways. Published monthly. Price: Rs. 1-6-0 or 2s. 2d.

### TECHNICAL PAPERS.

(8) Over 200 papers have been published by the Technical Section of the Railway Board's office. The papers comprise:—

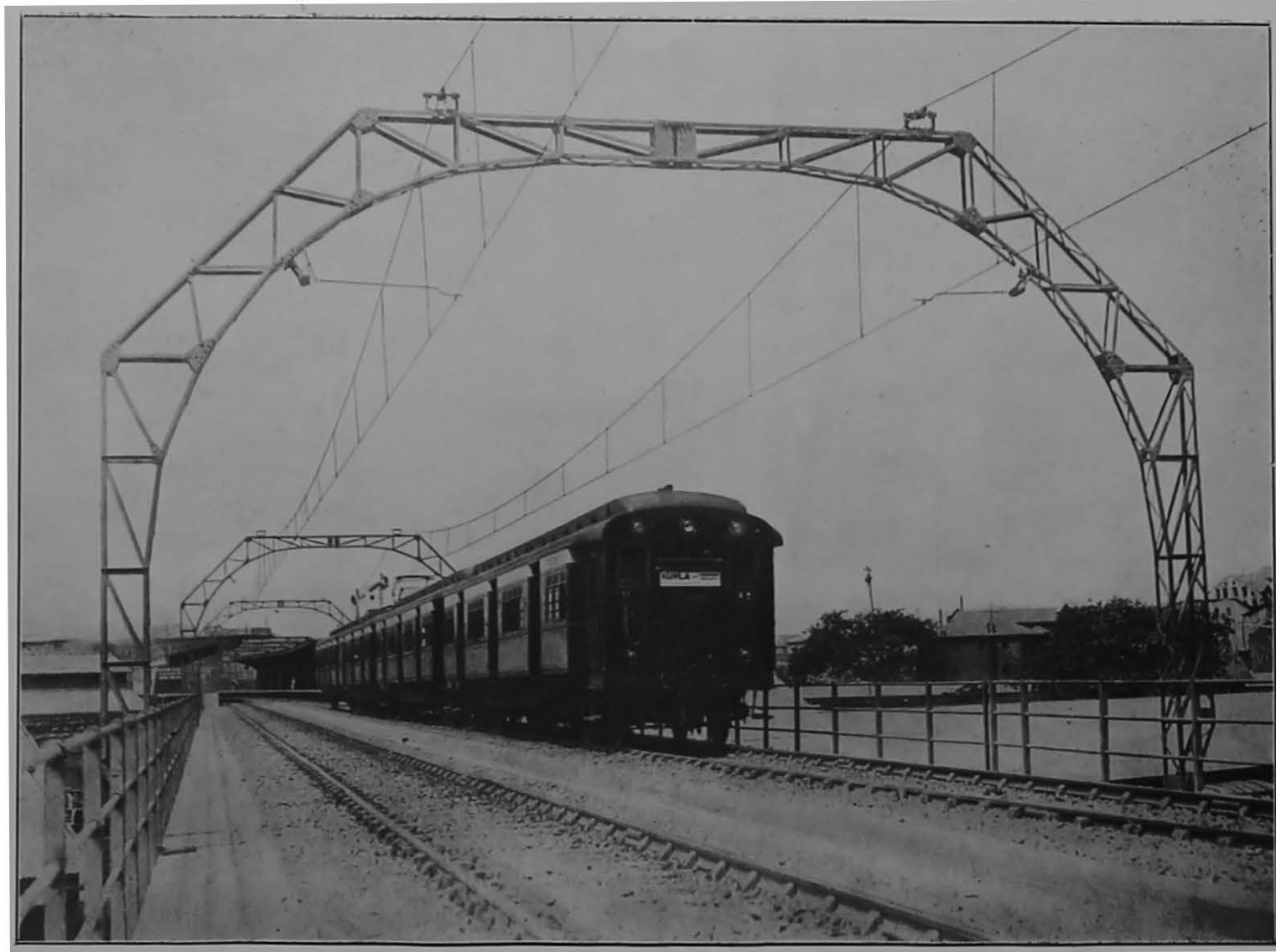
- (a) Original descriptions of railway works and studies of railway problems in India and elsewhere.
- (b) Reprints of articles from foreign engineering magazines.
- (c) Reprints or abstracts of reports received by the Government of India on subjects connected with railways.

A complete list of the papers can be obtained *gratis* from the Secretary, Railway Board. A few of the more important Technical papers are mentioned below:—

<i>Name.</i>	<i>Author.</i>
The design of wall foundations for bridges . . . . .	(Compiled.)
Statistics of railway working expenditure . . . . .	G. DEUCHARS.
River training and control on the guide bank system . . . . .	F. J. E. SPRING,
Mountain railways . . . . .	G. DEUCHARS.
Rules for the preparation of railway projects . . . . .	
Oil fuel trials on the North Western Railway of India, 1913—16 . . . . .	
The central control systems for the scheduling of operations in locomotive repairs workshops in England . . . . .	H. H. SAUNDERS.
The Hardinge Bridge over the Lower Ganges at Sara . . . . .	SIR ROBERT GALES.
Technical education in relation to railways in America . . . . .	H. L. COLE.
Indian Standard Locomotives (5' 6" gauge) . . . . .	H. L. COLE.
Railway Statistics and the Operating Officer . . . . .	MAJOR F. H. BUDDEN.

The prices of the papers vary from Annas Four to Rupees Eight.

The books and papers can be bought from the Government of India, Central Publication Branch, 8, Hastings Street, Calcutta.

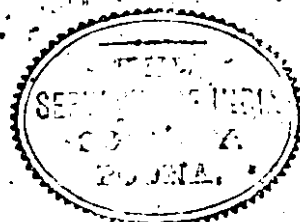


Great Indian Peninsula electric train on Wadi Bundar Viaduct.

GOVERNMENT OF INDIA  
RAILWAY DEPARTMENT  
(RAILWAY BOARD)

REPORT  
BY THE  
RAILWAY BOARD  
ON  
INDIAN RAILWAYS

FOR  
1924-25



Volume I



CALCUTTA: GOVERNMENT OF INDIA  
CENTRAL PUBLICATION BRANCH  
1925

## CONTENTS.

### CHAPTER I.—GENERAL ADMINISTRATION.

	PAGE.
1. General review . . . . .	1
2. Separation of Railway from General finances . . . . .	2
3. Institution of depreciation fund . . . . .	3
4. Construction of branch and feeder lines . . . . .	4
5. Decentralisation . . . . .	4
6. Transfer of the East Indian and Great Indian Peninsula Railways to State management . . . . .	4
7. Reorganisation on railways . . . . .	5
8. Amalgamation of the East Indian and Oudh and Rohilkhand Railways . . . . .	6
9. Medical organisation . . . . .	6
10. Revision of railway risk notes . . . . .	7
11. Meetings with Agents and Local Governments Inspections . . . . .	7
12. Railways and the Legislature . . . . .	8
13. Central Advisory Council . . . . .	8
14. Standing Finance Committee for railways . . . . .	10
15. Budget debate in the Assembly and Council of State . . . . .	11

### CHAPTER II.—FINANCIAL RESULTS OF THE YEAR'S WORKING.

16. Trade review . . . . .	13
17. Financial results of working . . . . .	14
18. Analysis of earnings . . . . .	21
19. Analysis of working expenses . . . . .	24
20. Economies effected during the year . . . . .	24
21. Stores balances . . . . .	26
22. Compensation claims for goods lost or damaged . . . . .	27

### CHAPTER III.—NEW CONSTRUCTION AND ENGINEERING WORKS.

23. Capital expenditure . . . . .	29
24. Lines opened during 1924-25 . . . . .	30
25. Lines under construction on 31st March 1925 . . . . .	31
26. New open line schemes . . . . .	40
27. Electrification of railways . . . . .	40
28. Other improved facilities on open lines . . . . .	43

### CHAPTER IV.—ROLLING STOCK AND MATERIALS.

29. Additions to equipment . . . . .	48
30. Standardisation of rolling stock . . . . .	49
31. New types of rolling stock . . . . .	50
32. Automatic centre buffer coupler . . . . .	50
33. Working of the wagon pool . . . . .	51
34. Wagon supplies in the coal fields . . . . .	51
35. Investigation of the working of junctions of interchange . . . . .	52
36. Value of railway materials purchased . . . . .	52
37. New stores rules and purchase of Indian manufactured articles . . . . .	53
38. Wagon bounties . . . . .	53
39. Rails and structural steel . . . . .	57
40. Investigation of sleeper supply . . . . .	57
41. Investigation of timber supply for railway carriages . . . . .	58
42. Indian coal committee . . . . .	58
43. Three years coal contracts . . . . .	59
44. Coal supply . . . . .	60

## CHAPTER IV.—STAFF.

	PAGE.
45. Number of staff . . . . .	62
46. Cost of staff . . . . .	62
47. Indianisation . . . . .	63
48. Training of staff . . . . .	66
49. Recruitment . . . . .	66
50. Strikes . . . . .	66

## CHAPTER VI.—MISCELLANEOUS.

51. Increased facilities for lower class passengers . . . . .	67
52. Flood damages . . . . .	71
53. Accidents . . . . .	75
54. Local Advisory Committees . . . . .	77

## APPENDICES.

A. Notes on the relation of the Government to Railways in India . . . . .	79
B. Organisation for Government control' . . . . .	85
C. Resolution regarding the separation of Railway from General finances . . . . .	91
D. Rules relating to allocation of expenditure and the depreciation fund . . . . .	98
E. Resolution on the subject of financing of branch lines of railways . . . . .	96
F. H. E. the Viceroy's address to the Indian Railway Conference Association, at the opening of the 1924 session . . . . .	101
G. Statements of:—	
(1) Gazetted officers and officers of corresponding rank employed on Class I railways . . . . .	108
(2) Subordinates drawing Rs. 250 per mensem and over, etc. . . . .	108
H. List of officers of the Railway Department (Railway Board) . . . . .	110

APPENDIX G.

Statement of Gazetted Officers and Officers of corresponding rank employed on Class I Railways (excluding Nizam's Guaranteed State and Jodhpur Railways) on the 1st April 1924 as compared with 1st April 1925.

Item.	A. B.		B. N.		D. & N. W.		B. B. & C. I.		DUMRA.		E. B.		E. I.		G. I. P.		M. & S. M.		N. W.		O. & R.		R. & K.		S. I.		State Rail-way officers not previously included.		TOTAL.		
	1924.	1925.	1924.	1925.	1924.	1925.	1924.	1925.	1924.	1925.	1924.	1925.	1924.	1925.	1924.	1925.	1924.	1925.	1924.	1925.	1924.	1925.	1924.	1925.	1924.	1925.	1924.	1925.	1924.	1925.	
1	2	3	4	5	6	7	8	9	10	11	12	13	14	15	16	17	18	19	20	21	22	23	24	25	26	27	28	29	30	31	
<b>1. Agency Department—</b>																															
1'01. Europeans . . . . .	2	2	4	4	2	2	7	7	3	3	3	3	8	7	7	7	4	4	6	7	2	2	2	1	2	3	..	..	52	52	
1'02. Anglo-Indians . . . . .	..	..	1	1	..	..	..	..	1	1	..	..	..	..	..	..	..	..	..	..	..	..	..	..	..	..	..	..	..	..	
1'03. Muslims . . . . .	..	..	..	..	..	..	..	..	..	..	..	..	..	..	..	..	..	..	..	..	..	..	..	..	..	..	..	..	..	..	
1'04. Non-Muslims . . . . .	..	..	1	1	..	..	..	..	..	..	..	..	2	3	..	1	2	2	2	1	..	..	..	..	1	1	..	..	8	9	
1'05. TOTAL . . . . .	2	2	6	6	2	2	7	7	4	4	3	3	10	10	7	8	6	6	8	8	2	2	2	1	3	4	..	..	63	63	
<b>2. Engineering Department—</b>																															
2'01. Europeans . . . . .	20	21	61	72	19	21	53	59	35	34	29	28	46	44	67	62	42	46	76	68	16	16	5	5	35	43	47	47	551	566	
2'02. Anglo-Indians . . . . .	..	..	12	12	..	..	..	..	3	3	3	1	1	2	2	2	1	1	7	4	1	..	..	..	..	..	..	5	3	35	28
2'03. Muslims . . . . .	1	1	4	3	..	..	1	..	..	..	..	..	1	1	4	4	..	..	1	2	..	..	..	..	1	1	2	4	15	16	
2'04. Non-Muslims . . . . .	1	1	10	11	..	..	8	11	1	2	18	18	9	10	6	7	4	4	31	32	9	10	..	..	6	9	3	13	106	128	
2'05. TOTAL . . . . .	22	23	87	98	19	21	62	70	39	39	50	47	57	57	79	75	47	51	115	106	26	26	5	5	42	53	57	67	707	738	
<b>3. Traffic Department—</b>																															
3'01. Europeans . . . . .	11	10	36	34	13	14	36	35	22	23	24	23	46	34	50	58	23	24	44	50	15	15	2	2	18	18	8	8	357	378	
3'02. Anglo-Indians . . . . .	1	1	1	2	..	..	2	2	2	2	1	1	6	7	7	4	2	2	1	2	1	1	..	..	1	1	..	..	25	25	
3'03. Muslims . . . . .	..	..	2	2	1	1	..	..	..	..	2	2	3	3	..	..	1	1	9	6	7	6	..	..	..	..	..	1	25	24	
3'04. Non-Muslims . . . . .	1	1	9	10	2	2	7	7	2	3	10	10	12	14	7	8	5	4	7	9	..	1	..	..	3	3	..	..	65	72	
3'05. TOTAL . . . . .	13	12	48	48	16	17	45	44	26	28	37	36	67	68	73	70	31	31	61	69	23	23	2	2	22	22	8	9	472	499	
<b>4. Locomotive and Carriage and Wagon Departments—</b>																															
4'01. Europeans . . . . .	8	8	29	28	10	10	30	32	17	17	19	18	37	16	25	24	22	22	57	52	13	12	3	2	14	16	4	4	258	261	
4'02. Anglo-Indians . . . . .	..	..	..	..	..	..	1	1	..	..	..	..	1	..	..	..	..	..	..	1	..	..	..	..	..	..	..	..	..	2	2
4'03. Muslims . . . . .	..	..	..	..	..	..	..	..	..	..	..	..	..	..	1	..	..	..	..	..	..	..	..	..	..	..	..	..	..	..	1
4'04. Non-Muslims . . . . .	1	1	..	1	..	..	..	..	..	..	2	2	4	3	2	3	..	..	..	1	..	..	..	..	..	..	..	..	..	0	11
4'05. TOTAL . . . . .	9	9	29	29	10	10	31	33	17	17	21	20	42	19	27	28	22	22	57	54	13	12	3	2	14	16	4	4	290	276	





APPENDIX G—concluded.

Statement of Subordinates, drawing Rs. 250 per mensem and over or on scales of pay rising to Rs. 250 per mensem and over, employed on Class I Railways (excluding Nizam's Guaranteed State and Jodhpur Railways) on 1st April 1924 as compared with 1st April 1925.

Item.	A. B.		B. N.		B. & N. W.		H. B. & U. I.		B. R. M.		E. R.		E. I.		G. I. P.		M. & S. M.		N. W.		O. & R.		R. & K.		S. I.		TOTAL.	
	1924.	1925.	1924.	1925.	1924.	1925.	1924.	1925.	1924.	1925.	1924.	1925.	1924.	1925.	1924.	1925.	1924.	1925.	1924.	1925.	1924.	1925.	1924.	1925.	1924.	1925.	1924.	1925.
	2	3	4	5	6	7	8	9	10	11	12	13	14	15	16	17	18	19	20	21	22	23	24	25	26	27	28	29
<b>1. Agency Department—</b>																												
1'01. Europeans . . . . .	..	..	1	2	..	..	1	1	..	..	4	3	1	1	4	4	..	..	2	1	1	1	..	..	..	..	14	18
1'02. Anglo-Indians . . . . .	1	1	1	..	1	1	1	1	0	5	2	2	..	1	..	..	1	1	..	..	1	..	..	..	1	1	15	18
1'03. Muslims . . . . .	..	..	..	..	..	..	2	2	..	..	..	..	..	..	..	..	..	..	3	2	..	..	..	..	..	..	5	4
1'04. Non-Muslims . . . . .	4	4	3	4	1	1	8	8	3	3	2	3	9	9	3	5	2	2	4	7	2	2	1	1	3	4	45	55
1'05. TOTAL . . . . .	5	5	5	6	2	2	12	12	9	8	8	8	10	11	7	9	3	3	9	10	4	3	1	1	4	5	73	88
<b>2. Engineering Department—</b>																												
2'01. Europeans . . . . .	5	4	11	11	7	6	14	18	2	1	15	14	70	63	42	48	12	14	48	56	13	11	4	3	13	11	256	260
2'02. Anglo-Indians . . . . .	7	6	45	44	19	10	12	14	31	40	23	20	96	97	18	29	26	27	38	38	20	22	..	1	13	24	360	391
2'03. Muslims . . . . .	3	3	5	7	..	..	11	10	3	2	3	3	8	3	15	17	..	..	58	52	..	3	1	1	1	1	108	102
2'04. Non-Muslims . . . . .	5	7	46	52	4	4	108	121	44	47	38	35	80	77	46	53	14	18	103	101	21	20	..	..	14	21	523	662
2'05. TOTAL . . . . .	20	20	107	114	30	29	145	161	60	90	79	42	254	240	121	149	52	54	247	247	54	65	5	5	43	17	1,237	1,305
<b>3. Traffic Department—</b>																												
3'01. Europeans . . . . .	6	4	32	30	9	10	46	58	4	5	30	53	180	454	276	322	9	9	142	127	32	30	1	1	10	12	786	1,115
3'02. Anglo-Indians . . . . .	10	12	77	77	7	7	23	26	38	39	52	42	143	412	249	343	17	17	71	78	25	24	5	5	5	5	722	1,081
3'03. Muslims . . . . .	..	..	2	2	1	1	7	6	1	1	..	1	3	7	..	15	..	..	10	13	7	6	..	..	1	1	32	18
3'04. Non-Muslims . . . . .	2	4	14	13	2	1	114	117	11	14	23	21	30	51	71	120	1	1	38	46	18	31	..	..	10	12	331	431
3'05. TOTAL . . . . .	18	20	125	122	19	19	190	207	54	59	114	117	356	924	596	797	27	27	261	264	82	91	6	6	26	30	1,674	2,603
<b>4. Locomotive and Carriage and Wagon Departments—</b>																												
4'01. Europeans . . . . .	11	11	197	164	14	12	232	191	30	27	68	72	531	168	107	118	57	56	238	219	30	33	3	2	42	39	1,560	1,302
4'02. Anglo-Indians . . . . .	50	20	133	192	16	14	248	186	78	80	61	61	395	111	68	84	103	112	163	163	54	62	4	4	117	111	1,460	1,208
4'03. Muslims . . . . .	1	1	1	1	1	1	1	1	..	..	2	1	2	..	2	4	1	1	23	41	2	2	..	..	..	..	35	13
4'04. Non-Muslims . . . . .	3	3	10	19	..	1	54	50	5	5	13	16	18	11	27	39	2	2	77	82	6	7	4	4	18	18	237	266
4'05. TOTAL . . . . .	35	35	341	476	31	28	535	428	113	112	144	140	946	290	204	185	168	171	501	505	101	104	11	10	177	176	3,302	2,719



## APPENDIX H.

## List of officers of the Railway Department (Railway Board) on the 31st March 1925.

The Hon'ble Sir Charles Innes, K.C.S.I., C.I.E., I.C.S., Member of Council of Governor General.

## Railway Board.

Mr. C. D. M. Hindley . . . . .	Chief Commissioner of Railways.
Mr. F. A. Hadow, C.V.O. . . . .	Member.
Mr. P. C. Sheridan, C.M.G. . . . .	Member.
Mr. G. G. Sim, C.I.E., I.C.S. . . . .	Financial Commissioner.

## Officers.

Lt.-Col. L. E. Hopkins, D.S.O., R.E. . . . .	Director, Civil Engineering.
Mr. A. J. Chase, O.B.E. . . . .	Director, Mechanical Engineering (on leave).
Mr. J. H. D. Wrench . . . . .	Offg. Director, Mechanical Engineering.
Mr. S. G. Tomkins . . . . .	Director of Establishment.
Mr. S. D. Manson . . . . .	Director of Traffic.
Mr. P. H. Maffin, O.B.E., M.C. . . . .	Offg. Secretary.
Mr. A. M. Hayman, O.B.E. . . . .	Deputy Director, Finance.
Mr. B. Stanley . . . . .	„ „ Establishment (on leave).
Mr. J. H. Carpenter . . . . .	Offg. Deputy Director, Establishment.
Mr. A. F. Harvey . . . . .	Deputy Director, Stores.
Major F. H. Budden, M.C., R.E. . . . .	„ „ Statistics.
Mr. Muzaffar Hussan . . . . .	„ „ Way & Works.
Mr. R. N. Nicolls, O.B.E. . . . .	„ „ Traffic.
Mr. K. C. De . . . . .	Assistant Director, Technical.
R. S. B. D. Puri, . . . . .	„ „ Finance.
Mr. F. C. Malhan . . . . .	„ „ Statistics.
Mr. R. Thomas . . . . .	Assistant Secretary (on leave).
Mr. E. C. Rundlett . . . . .	Offg. Assistant Secretary.

## Officers on Special Duty.

Mr. M. D. Sheikh.  
K. S. Barkat Ali.  
Mr. P. B. Chandwani.

## Accountant General, Railways.

Mr. G. W. V. deRhe Philipe, O.B.E., V.D. . . . .	Accountant General, Railways (on leave).
Mr. J. M. Hartley . . . . .	Offg. Accountant General, Railways.
Mr. J. Kaul . . . . .	„ Dy. Accountant General.
Mr. C. H. Bicketts . . . . .	„ Assistant Accountant General.