

ADMINISTRATION REPORT
ON THE
RAILWAYS IN INDIA

FOR THE
CALENDAR YEAR 1903.

Presented to both Houses of Parliament by Command of His Majesty.



LONDON:
PRINTED FOR HIS MAJESTY'S STATIONERY OFFICE,
BY DARLING & SON, LTD., 34-40, BACON STREET, E.

And to be purchased, either directly or through any Bookseller, from
EYRE & SPOTTISWOODE, 25, ABINGDON STREET, WESTMINSTER, S.W.;
and 32, ABINGDON STREET, WESTMINSTER, S.W.;
or OLIVER & BOYD, EDINBURGH;
or E. PONSONBY, 13, GRAFTON STREET, DUBLIN

1904.

[Cd. 2225.] Price 3s. 8d.

650 Wt 11139 9/04 D & S 6 19196

Messrs. P. S. KING & SON'S
RECENT PUBLICATIONS
DEALING WITH THE
TARIFF QUESTION.

THE TARIFF PROBLEM.

By W. J. ASHLEY, *Professor of Commerce in the University of Birmingham; late Professor of Economic History in Harvard University, U.S.A.; sometime Fellow and Lecturer of Lincoln College, Oxford.* SECOND EDITION. Crown 8vo, 3s. 6d. net.

"Autonomos," in the *Fortnightly Review* :—"One of the ablest advocates of the Birmingham-Sheffield Policy is Professor Ashley, whose book on the Tariff Problem is perhaps the most effective plea for fiscal revolution which has appeared in the course of the present controversy."

***Daily Mail* :—**"Though unpretending in appearance, is of quite exceptional merit. It examines with extreme care Mr. Chamberlain's proposals and the case for Tariff Reform, and shows that under free trade the character of British trade has been changing for the worse."

ELEMENTS OF THE FISCAL PROBLEM.

By L. G. CHIOZZA MONEY, author of "British Trade and the Zollverein Issue," etc., *Fellow of the Royal Statistical Society.* Demy 8vo, 3s. 6d. net.

***Westminster Gazette* :—**"It is impossible for anyone who reads this book to complain that the Free Trade doctrine is abstract, antiquated, or visionary. Never was a case presented in a more modern, concrete, or practical form."

***Sheffield Independent* :—**"Mr. Money's book must be reckoned as one of the very best practical expositions of our Free Trade policy the controversy has given us."

TRADE AND EMPIRE.

By JOHN B. C. KERSHAW, F.I.C., F.S.S. Illustrated by many Trade Diagrams, and containing Official Figures for British, Foreign, and Colonial Trade, extending over a long series of years. Demy 8vo, 1s.

***Commercial Intelligence* :—**"Mr. JOHN B. C. KERSHAW has made a speciality of preparing diagrams showing the course of trade over long periods of years It is with considerable satisfaction that we are able to recommend his pamphlet on trade in the Empire to those who are studying the fiscal issue."

THE TRADE OF THE GREAT NATIONS.

By MARK WARREN. An Epitome of Statistics, showing the Comparative Growth of the Foreign Trade of the Great Nations during a quarter of a century, with especial reference to the Foreign Trade of the United Kingdom.

***Truth* :—**"It seems to me a most valuable contribution to the discussion in which we are now involved, partly because the figures and statistics in it were all marked out before the question had become one of party politics, and partly because the problem is treated from so many different points of view, and frequently in an original way."

CANADA AND THE EMPIRE.

An Examination of Trade Preferences. By EDWIN S. MONTAGU and BRON HERBERT. With a Preface by LORD ROSEBERRY. 3s. 6d. net.

The authors have made a special study of the subject in Canada, and their conclusions are set forth in the volume. [*Ready shortly.*]

NATIONAL PROGRESS IN WEALTH AND TRADE.

Statistical Studies relating to National Progress in Wealth and Trade since 1882: A Plea for Further Inquiry. By A. L. BOWLEY, M.A., author of "Elements of Statistics." Crown 8vo, 2s. net.

Protection in Practice.

Messrs. P. S. KING & SON announce the publication, under the Editorship of Mr. William Harbutt Dawson, of a series of handy volumes dealing with the practical operation of Protection in some of the leading industrial countries and the British Colonies. Each monograph, besides giving a sufficient history of fiscal policy in the country concerned, endeavours to estimate the effects of Protection upon Commerce, Industry, and Labour, and also deals with the subject from the political and financial standpoints.

All the volumes are written by experts, and it is confidently believed that they will prove a valuable and welcome contribution to the literature of the fiscal controversy.

PROTECTION IN GERMANY.

By WILLIAM HARBUTT DAWSON, author of "Germany and the Germans," etc. Crown 8vo, 3s. 6d. net.

PROTECTION IN THE UNITED STATES.

By A. MAURICE LOW, *Member of the American Social Science Association*, author of "The Conspiracy and Protection of Property Act," etc. Crown 8vo, 3s. 6d. net.

PROTECTION IN CANADA AND AUSTRALASIA.

By C. H. CHOMLEY, B.A., LL.B., *Member of the Council of the Australian Free Trade Association.* Crown 8vo, 3s. 6d. net.

PROTECTION IN FRANCE AND ITALY.

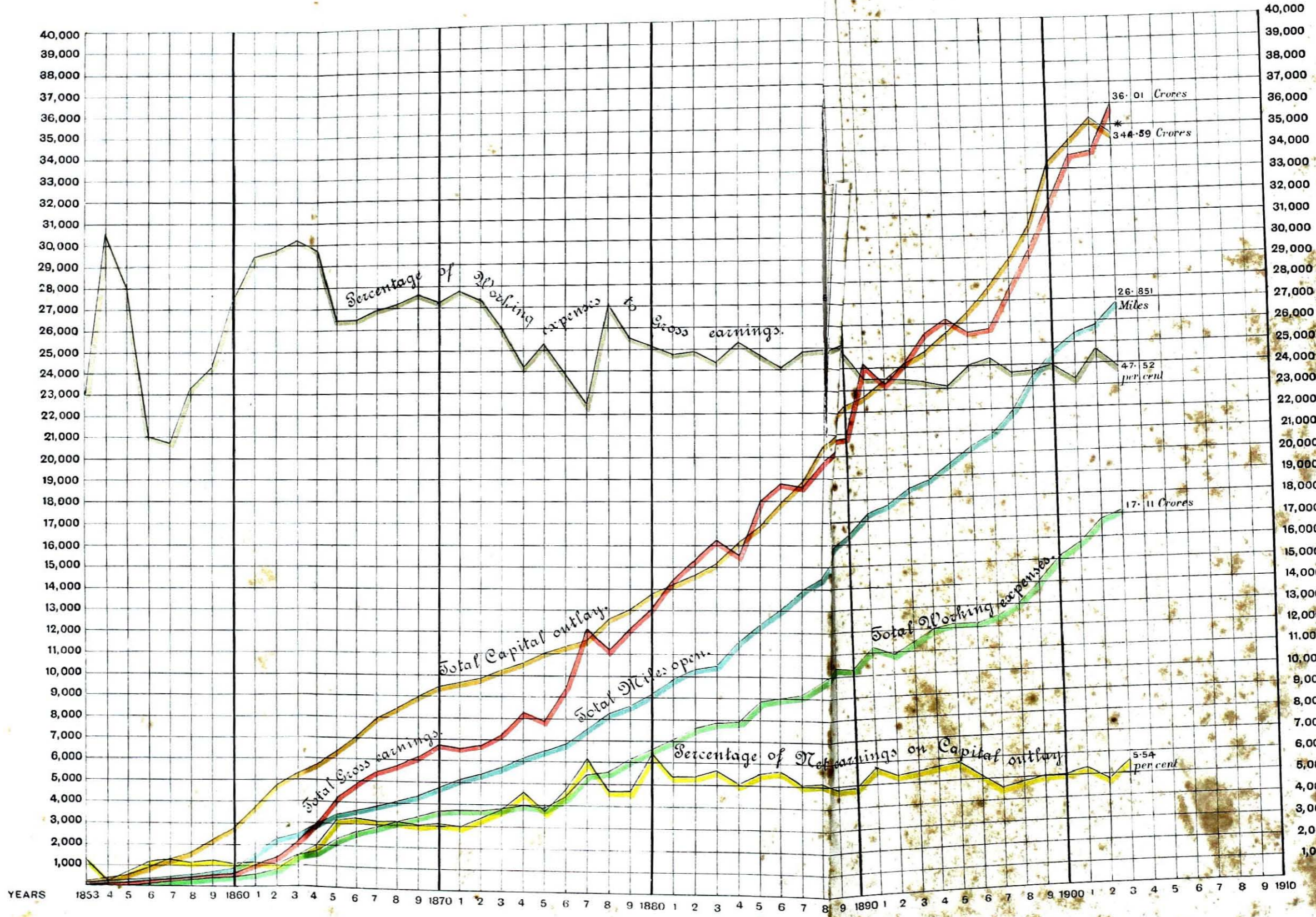
By H. O. MEREDITH, King's College, Cambridge. 3s. 6d. net. [*Ready shortly.*]

P. S. KING & SON,
ORCHARD HOUSE, 2 & 4, GREAT SMITH STREET,
WESTMINSTER.

INDIAN RAILWAYS

Diagram showing for each year the total up to 31st December 1903 for Capital outlay, Gross earnings, Working expenses, and length in Miles open, also percentage of Net earnings on Capital outlay and percentage of Working expenses to Gross earnings.

The figures on this scale represent lakhs for the Capital outlay, tens of thousands for Gross earnings and Working expenses and Miles for length open. In the case of percentage of Net earnings on Capital outlay, and percentage of Working expenses to Gross earnings, each square represents one and two per cent. respectively.



* The decrease is due to revision of the outlay hitherto adopted for lines purchased by the State from Guaranteed Railway Companies.

CONTENTS.

	Page of report.
Diagram showing, for each year, the total capital outlay, gross earnings, working expenses, percentage of net earnings on capital outlay, and open mileage from 1853 to 1903	} See after title page.
Map showing the railway system of India corrected up to the 30th April 1904	
General remarks regarding changes in the report	1
Mileage—	
Total railway mileage open for traffic	1
Proprietary distribution of the open mileage of railways	2
Additions to the open mileage of railways	2
Additions to the sanctioned mileage of railways	2
Mileage of railways remaining under construction or sanctioned for commencement	3
Capital—	
Capital outlay	4
Average outlay per mile open	5
Distribution of Capital outlay over main heads of expenditure	5
Sterling Capital of Guaranteed railways and State lines leased to companies	5
Budget allotments for Capital expenditure	6
Capital expenditure during the past ten years (1894 to 1903) on rolling-stock, in the improvement of existing lines, and on new lines	6
Rolling-stock—Additions during the year 1902 and 1903, number and value of stock on the 31st December 1903 and number under supply	7
Automatic brakes	7
Carriages lighted by gas and electricity	7
Interlocking and block working	7
Statistical results of working—	
Main statistical results of working	7
Gross earnings	8
Coaching traffic	8
Goods traffic	9
Principal commodities	9
Coal	10
Working expenses	11
Fuel consumption	12
Train, vehicle and ton-mileages	12
Earnings per mile worked and per train-mile	12
Statistical return of net earnings on Capital outlay	13
Financial results to the State—	
Financial results to the State of the working of State and railways Guaranteed under the old contracts	14
Capital liability of the State in connection with railways classed as State railways, and railways Guaranteed under the old contracts, and return of net earnings thereon	15
Chief events of the year	15
Important works completed	18
Bridges and Tunnels	18

Contents.

	Page of Report.
Accidents—	
Accidents of all descriptions	19
Train accidents	19
Damages by floods and rainfall	20
Railway staff—	
Railway staff	22
Volunteer force	22
Police force	22
Provident Fund	22
Fine Funds	23
Schools	23
Railway surveys	23
Projects for new lines	24

Appendices of Mileage and Capital outlay.

	Page of Appendices.
No. 1.—List of open lines of railway at the close of the year 1903, alphabetically arranged, with their lengths, letters used to denote railways, the administrations by which worked, gauge and classification	2
No. 2.—Mileage added to the railway system of India, during the year 1903 and from the 1st January to the 30th April 1904	6
No. 3.—Total railway mileage opened for traffic during, and at the end of each year from 1853 to 1903, and the total mileage opened during the Viceroyalty of each Governor General	7
No. 4.—Details of the mileage under construction or sanctioned at the close of the year 1903 with additions to the 30th April 1904	8
No. 5.—Capital authorised to be raised for each Guaranteed railway, State line leased to companies and Branch Line company the amount raised and the amount withdrawn to the 31st December 1903	12
No. 6.—Amount allotted to each railway administration for expenditure on Capital account during each official year from 1894-95 to 1903-04, and the amount actually expended	14
No. 7.—Capital expenditure on each railway system during the past ten years, 1894 to 1903	16
No. 8.—Capital outlay on each railway to the close of the year 1903 distributed over main heads of expenditure	20
No. 9.—Capital liability on account of railways classed as State railways at end of 1903	32

Appendices of Statistics.

No. 10.—Main results of working Indian railways treated as one system from 1853 to 1903	34
No. 11.—Summary of the general results of working Indian railways treated as one system, for the years 1899 to 1903	36
No. 12.—General results of working each railway system for the years 1899 to 1903	38
No. 13.—Gain or loss to the State from railway outlay for the years 1879 to 1903	50
No. 14.—Working expenses under different heads of each railway system during each half-year of 1903	54
No. 15.—Coaching traffic—Details of coaching traffic of each railway system during the years 1899 to 1903 and for the two halves of the year 1903.	60

Appendices of Statistics—concl'd.

	Page of Appendices.
No. 16.—Goods traffic—Details of goods traffic of each railway system during the years 1899 to 1903, and for the two halves of the year 1903	74
No. 17.—Principal commodities carried by railways, and the earnings therefrom, during the year 1903	84
No. 18.—Analysis of working of each railway system, during each half-year of 1903	102
No. 19.—Train and engine-mileage of each railway system, for the years 1899 to 1903	126
No. 20.—Unit-mileage of passengers and ton-mileage of coaching and goods traffic	128
No. 21.—Vehicle-mileage (loaded and empty) during the years 1899 to 1903	130
No. 22.—Rolling-stock under different heads on each railway at the close of the year 1903	134
No. 23.—Rolling-stock—Number of, and outlay on rolling stock at the close of the year 1903 and work done	136
No. 24.—Rolling-stock fitted with automatic brakes at the close of the year 1903	140
No. 25.—Rolling-stock lighted by gas and electricity at the close of the year 1903	141
No. 26.—Railways on which points and signals are interlocked and on which block instruments are used for train signalling at the close of the year 1903	142
No. 27.—Coal and wood fuel consumed by each railway system, price paid per ton, and consumption per train-mile, etc., during the years 1899 to 1903	143
No. 28.—Coal produced in India during the years 1885 to 1903	147
No. 29.—Collieries owned and worked by Railways or the State	148
No. 30.—Accidents and casualties to trains on railways treated as one system, during the years 1902 and 1903	149
No. 31.—Numerical return of servants of all races employed on each railway system (open lines only), and the amounts deposited by them in the Provident Fund, at the close of the year 1903	150
No. 32.—Number of men enrolled in Railway Volunteers Corps on the 31st December 1903	152
No. 33.—Strength and cost of the Police force on each railway system (open lines), and the amount of compensation payments on account of claims for goods traffic, for the year 1903	153
No. 34.—Transactions of the Fine Funds for the year 1903	154
No. 35.—Railway and Railway Aided schools at the close of the year 1903	155
No. 36.—Cost and particulars of some of the large railway bridges corrected up to 31st December 1903	156
No. 37.—Cost and particulars of some of the important railway tunnels corrected up to 31st December 1903	164
No. 38.—History of open lines and of lines under construction or sanctioned for commencement on the 31st December 1903	168

Appendices of Important documents.

APPENDIX A.—Memorandum, dated the 23rd March 1904, by the Honourable Sir. A. T. Arundel, K.C.S.I., on railway development and working	304
APPENDIX B.—Government of India Circular No. 1161 R. C., dated the 28th July 1903, regarding the advisability of arranging that all girders of large bridges on 3' 3½" gauge railways should be designed to carry 5' 6" gauge loads	324
APPENDIX C.—Government of India letter No. 21 R. P., dated the 5th February 1902; Resolution No. 3210-A., dated the 22nd July 1898; and letter No. 12 R. P., dated the 28th January 1903; regarding the construction of feeder lines by Local District Boards from taxes expressly levied for the purpose, and the financing of such lines	325