

**EAST INDIA (RAILWAYS).**

**ADMINISTRATION REPORT**

ON THE

**RAILWAYS IN INDIA**

FOR THE

**CALENDAR YEAR 1900.**

4

---

Presented to both Houses of Parliament by Command of His Majesty.

---

*Ca 767 of 1901*



LONDON :

PRINTED FOR HIS MAJESTY'S STATIONERY OFFICE,  
By DARLING & SON, LTD., 34-40, BACON STREET, E.

And to be purchased, either directly or through any Bookseller, from  
EYRE & SPOTTISWOODE, EAST HARDING STREET, FLEET STREET, E.C.,  
and 32, ABINGDON STREET, WESTMINSTER, S.W. ;  
or OLIVER & BOYD, EDINBURGH ;  
or E. PONSONBY, 116, GRAFTON STREET, DUBLIN.

[Cd. 767.] Price 4s. 8½d.

*Agents for the sale of books published by the Superintendent of Government Printing, India  
Calcutta.*

IN LONDON.

E. A. ARNOLD, 37, Bedford Street, Strand, W.C.  
CONSTABLE & Co., 2, Whitehall Gardens, S.W.  
SIMPSON LOW, MARSTON & Co., St. Dunstan's  
House, Fetter Lane, E.C.  
P. S. KING & Co., 11 and 14, King Street, West-  
minster, S.W.  
LUZAC & Co., 46, Great Russell Street, W.C.  
KEGAN PAUL, TRENCH, TRUBNER & Co., Charing  
Cross Road, W.C.  
B. A. QUARITCH, 15, Piccadilly, W.  
H. S. KING & Co., 65, Cornhill.  
WILLIAMS AND NORWICH, Oxford.  
DEIGHTON BELL & Co., Cambridge.

ON THE CONTINENT.

R. FRIEDLANDER AND SOHN, 11, Carlstrasse,  
Berlin.  
OTTO HARRASSOWITZ, Leipzig.  
KARL W. HIERSEMANN, Leipzig.  
ERNEST LEROUX, 28, Rue Bonaparte, Paris.  
MARTINUS NIHOFF, The Hague, Holland.

---

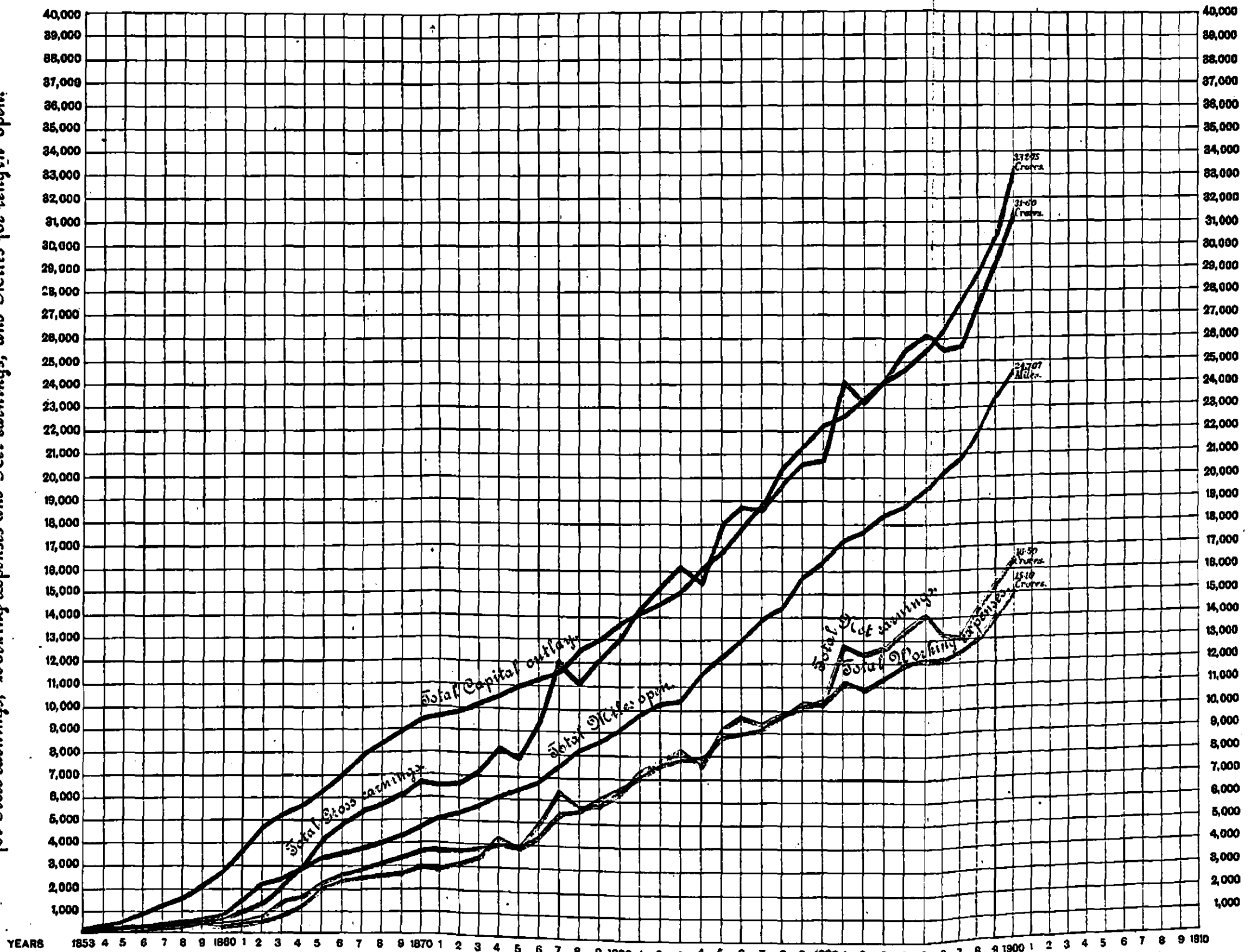
IN INDIA.

THACKER SPINK & Co., Calcutta and Simla.  
NEWMAN & Co., Calcutta.  
THACKER & Co., LD., Bombay.  
HIGGINBOTHAM & Co., Madras.  
SUPERINTENDENT, AMERICAN BAPTIST MISSION  
PRESS, Rangoon.  
E. SEYMOUR HALE, Esq., Fort Bombay.

# INDIAN RAILWAYS.

Diagram showing for each year the totals up to 31st December 1900 for Capital outlay, Gross earnings, Net earnings, Working expenses, and length in Miles open.

The figures on this scale represent lakhs for the Capital outlay, tens of thousands for Gross earnings, Working expenses and Net earnings, and Miles for length open.



# CONTENTS.

Page.

Diagram showing for each year the totals up to 31st December 1900 for Capital outlay, Gross earnings, Net earnings, Working expenses, and length in miles open . . . . .

Map of India . . . . .

**PART I—**

General . . . . .	5
Railways opened . . . . .	6
Railways surveyed . . . . .	7
Traffic and earnings . . . . .	8
Passenger traffic . . . . .	9
Goods traffic . . . . .	10
Train-mileage . . . . .	11
Working expenses . . . . .	12
Net earnings . . . . .	14
Capital . . . . .	15
Summary . . . . .	16

**PART II—**

Chief events of the year . . . . .	17
Important works completed . . . . .	18
Rolling-stock . . . . .	19
Accidents . . . . .	20
Flood damages . . . . .	21
Railway staff . . . . .	24

*Appendices of Mileage and History of railways.*

No. 1.—List of railways comprising the railway system of India at the close of the year 1900, alphabetically arranged . . . . .	28
No. 2.—Railways worked by each railway administration at the close of the year 1900 . . . . .	32
No. 3.—Mileage added to the railway system of India during the year 1900 and from 1st January to 30th April 1901 . . . . .	36
No. 4.—Railway mileage open for traffic year by year under each railway administration and during the Viceroyalty of each Governor General . . . . .	38
No. 5.—Mileage under construction or sanctioned at the close of the year 1900 . . . . .	42
No. 6.—Gross earnings (average) of individual railways per mile per week, and proportion of working expenses to gross earnings from date of opening . . . . .	44
No. 7.—History of railways constructed and in progress on the 31st December 1900 . . . . .	56

*Appendices of Statistics.*

No. 8.—General results of working Indian railways treated as one system for the years 1896 to 1900 . . . . .	208
No. 9.—Gross earnings in thousands of rupees of each railway administration for the years 1896 to 1900 . . . . .	210
No. 10.—Grain imported into, and exported from, the several Provinces in India for the years 1896 to 1900 . . . . .	212
No. 11.—Number of passengers carried for each railway and average distance travelled by, and average rate charged to, each for the years 1896 to 1900 . . . . .	214

## Contents.

	Page.
No. 12.—Gross earnings in thousands of rupees from coaching traffic on each railway (by systems) for the years 1896 to 1900 . . . . .	222
No. 13.—Goods carried on each railway (by systems), average rate charged per ton, and average distance carried for the years 1896 to 1900 . . . . .	224
No. 14.—Gross earnings in thousands of rupees from goods traffic on each railway (by systems) for the years 1896 to 1900 . . . . .	228
No. 15.—Principal commodities carried on Indian railways treated as one system and the earnings therefrom during the year 1900 . . . . .	230
No. 16.—Principal commodities carried on each railway (by systems) and the earnings therefrom during the year 1900 . . . . .	234
No. 17.—Train, engine, vehicle and ton-mileage of each railway (by systems) for the years 1896 to 1900 . . . . .	256
No. 18.—Loaded and empty vehicle mileage in thousands of miles on each railway (by systems) for the years 1896 to 1900 . . . . .	258
No. 19.—Gross earnings in rupees per mile worked on each railway (by systems) for the years 1896 to 1900 . . . . .	262
No. 20.—Gross earnings in rupees per train-mile on each railway (by systems) for the years 1896 to 1900 . . . . .	264
No. 21.—Working expenses in thousands of rupees of each railway (by systems) for the years 1896 to 1900 . . . . .	256
No. 22.—Proportion per cent. of working expenses to gross earnings on each railway (by systems) for the years 1896 to 1900 . . . . .	268
No. 23.—Working expenses per mile on each railway (by systems) for the years 1896 to 1900 . . . . .	270
No. 24.—Working expenses per train-mile on each railway (by systems) for the years 1896 to 1900 . . . . .	272
No. 25.—Coal and wood fuel consumed by each railway (by systems) and price paid per ton during the years 1896 to 1900. . . . .	274
No. 26.—Coal produced in India during the years 1885 to 1900 . . . . .	276
No. 27.—Collieries owned and worked by Railways or the State . . . . .	277
No. 28.—Average load and weight of Coaching trains on each railway (by systems) for the years 1896 to 1900 . . . . .	278
No. 29.—Average load and weight of Goods trains on each railway (by systems) for the years 1896 to 1900 . . . . .	282
No. 30.—Gain or loss to the State from railway outlay, as also the income derived by railways which are not guaranteed by the State for the years 1896 to 1900 . . . . .	284
No. 31.—Capital authorised to be raised for each Guaranteed railway and State line leased to companies, amount raised and the amount withdrawn to the 31st December 1900 . . . . .	320
No. 32.—Amount allotted to each railway administration for expenditure on capital account during each official year from 1891-92 to 1900-1901, and the amount actually expended . . . . .	322
No. 33.—Capital outlay on each railway to the close of the year 1900 distributed over main heads of expenditure . . . . .	324
No. 34.—Rolling-stock—Number of, outlay on, and work done by—at the close of the year 1900 . . . . .	336
No. 35.—Rolling-stock under different heads on each railway at the close of the year 1900 . . . . .	338
No. 36.—Railways on which points and signals are inter-locked and on which block instruments are used for train signalling at the close of the year 1900 . . . . .	340
No. 37.—Rolling stock fitted with automatic brakes at the close of the year 1900 . . . . .	341
No. 38.—Rolling stock lighted by gas at the close of the year 1900 . . . . .	342
No. 39.—Accidents and casualties on railways treated as one system during the year 1900 . . . . .	343

	Page.
No. 40.—Numerical return of servants of all races employed on each railway (open lines only), and the amount deposited by them in the Provident Fund at the close of the year 1900 . . . . .	344
No. 41.—Number of men enrolled in Railway Volunteer Corps on the 31st December 1900 . . . . .	345
No. 42.—Strength and cost of the Police force on each railway (open lines), and the amount of compensation payments due to thefts for the year 1900 . . . . .	346
No. 43.—Railway and railway aided schools at the close of the year 1900 . . . . .	347
No. 44.—Gross earnings under different heads, on each railway (by systems) during each half-year of 1900 . . . . .	348
No. 45.—Working expenses under different heads, of each railway (by systems) during each half-year of 1900 . . . . .	356
No. 46.—Analysis of Working of each railway (by systems) during each half-year of 1900 . . . . .	364

*Appendices of Important Documents.*

APPENDIX A.—Memorandum, dated the 20th March 1901, by the Honourable Sir Arthur Trevor, K.C.S.I., on the anticipated expenditure on railways for the three years 1901-02 to 1903-04 with accompaniments . . . . .	390
APPENDIX B.—Taxation of railway administrations by municipalities . . . . .	410
APPENDIX C.—Indian Railway Conference Regulations as revised by the Railway Conference of 1900 . . . . .	413

*Appendices of Contracts.*

APPENDIX D.—Indenture, dated the 21st December 1900, between the Secretary of State and the Great Indian Peninsula Railway Company for working the Great Indian Peninsula railway and Indian Midland railway systems as an amalgamated undertaking . . . . .	446
APPENDIX E.—Indenture, dated the 21st December 1900, between the Secretary of State and the Indian Midland Railway Company for making over the Indian Midland railway system to the Great Indian Peninsula Railway Company. . . . .	460
APPENDIX F.—Indenture, dated the 29th June 1900, between the Secretary of State and the Great Indian Peninsula Railway Company for the construction of the Chalisgaon-Dhullia and Jalgaon-Amalner branches . . . . .	464
APPENDIX G.—Indenture (Supplemental), dated the 1st February 1901, between the Secretary of State and the Bombay, Baroda and Central India Railway Company for working the Rajputana-Malwa railway and branch lines and extending the duration of the contracts up to the 31st December 1905 . . . . .	470
APPENDIX H.—Indenture, dated the 18th January 1901, between the Secretary of State and the Madras Railway Company for the construction of the Calicut-Azikhhal extension . . . . .	475
APPENDIX I.—Indenture (Supplemental), dated the 5th February 1901, between the Secretary of State and the Rohilkund and Kumaon Railway Company modifying the terms of the principal contract, dated the 8th September 1890 and the capital advanced contract, dated the 31st December 1892 . . . . .	481
APPENDIX J.—Agreement, dated the 2nd December 1899, between the Government of His Highness the Maharaja of Mysore and the Southern Mahratta Railway Company for maintaining and working the Hindupur-Guntakal railway . . . . .	484
APPENDIX K.—Agreement, dated the 2nd December 1899, between the Government of His Highness the Maharaja of Mysore and the Southern Mahratta Railway Company for the maintenance and working of the Birur-Shimoga railway . . . . .	488
APPENDIX L.—Agreement, dated the 14th December 1899, between the Government of His Highness the Maharaja of Mysore and the Southern Mahratta Railway Company for the maintenance and working of the Mysore-Nanjangud railway . . . . .	492