

THE  
Servants of India Society

*(Registered under the Societies Registration Act No. XXI of 1860)*

REPORT  
FOR 1968-69

POONA

Thursday, 12th June, 1969

# CONTENTS

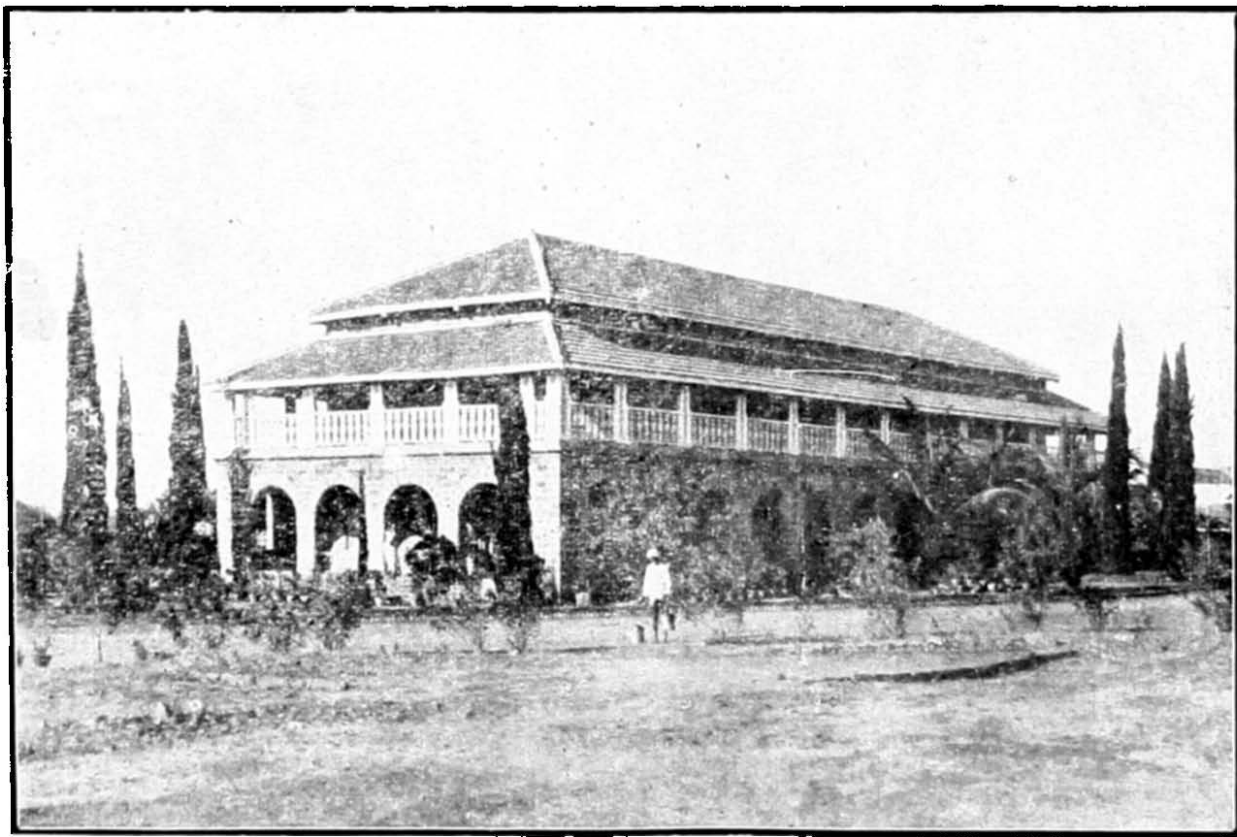
	<i>Pages</i>
Gokhale's Preamble to the Constitution	
of the Society . . . . .	i – ii
Report of the Society . . . . .	1–28

	<i>Pages</i>
Introduction . . . . .	1
Organisation . . . . .	1
Gokhale Day Dinner . . . . .	1
Sastri's Birth Centenary . . . . .	2
General . . . . .	2
Welfare of the Aborigines . . . . .	9
Rural Welfare and Cooperation . . . . .	14
Education . . . . .	16
Social Service . . . . .	21
Medical Relief . . . . .	25
Relief of Distress . . . . .	26
Other Activities . . . . .	27
Printing Presses . . . . .	28
Report of the Gokhale Institute	
of Politics and Economics . . . . .	29–37
Financial Statements of the Gokhale	
Institute of Politics and Economics . . . . .	38–52
List of Donations to the Society . . . . .	53–56
Financial Statements of the Society . . . . .	57–65
Financial Statements of the Rao Bahadur	
R. R. Kale Trust Fund . . . . .	66–68
Constitution and Bye-Laws of the Society . . . . .	69–79
List of Members of the Society . . . . .	80–81

**The Hon'ble Mr. G. K. Gokhale**



**FOUNDER**  
**The Servants of India Society**



**View of the Central Library of the Society Poona.**

# The Servants of India Society

---

## PREAMBLE

---

*Extracts from the original Preamble to the Constitution of the Society written by the illustrious Founder, the late Gopal Krishna Gokhale, in 1905.*

For some time past the conviction has been forcing itself on many earnest and thoughtful minds that a stage has been reached in the work of nation-building in India when, for further progress, the devoted labours of a specially trained agency applying itself to the task in a true missionary spirit are required. The work that has been accomplished so far has indeed been of the highest value. The growth during the last fifty years of a feeling of common nationality based upon common traditions and ties, common hopes and aspirations, and even common disabilities, has been most striking. The fact that we are Indians first, and Hindus, Mahomedans, Parsees or Christians afterwards, is being realised in a steadily increasing measure, and the idea of a united and renovated India marching onwards to a place among the nations of the world, worthy of her great past, is no longer a mere idle dream of a few imaginative minds, but is the definitely accepted creed of those who form the brain of the community—the educated classes of the country. A creditable beginning has already been made in matters of education and of local self-government; and all classes of the people are slowly but steadily coming under the influence of liberal ideas. The claims of public life are every day receiving wider recognition, and attachment to the land of our birth is growing into a strong and deeply cherished passion of the heart. The annual meetings of Congresses and Conferences, the work of public bodies and associations, the writings in the columns of the Indian Press—all bear witness to the new life that is coursing in the veins of the people. The results achieved so far are undoubtedly most gratifying, but they only mean that the jungle has been cleared and the foundations laid. The great work of rearing the superstructure has yet to be taken

in hand, and the situation demands on the part of workers devotion and sacrifices proportionate to the magnitude of the task.

The Servants of India Society has been established to meet in some measure these requirements of the situation . . . Much of the work must be directed towards building up in the country a higher type of character and capacity than is generally available at present, and the advance can only be slow. Moreover, the path is beset with great difficulties; there will be constant temptations to turn back; bitter disappointment will repeatedly try the faith of those who have put their hand to the work. But the weary toil can have but one end, if only the workers grow not faint-hearted on the way. One essential condition of success in this work is that a sufficient number of our countrymen must now come forward to devote themselves to the cause in the spirit in which religious work is undertaken. Public life must be spiritualised. Love of country must so fill the heart that all else shall appear as of little moment by its side. A fervent patriotism which rejoices at every opportunity of sacrifice for the motherland, a dauntless heart which refuses to be turned back from its object by difficulty or danger, a deep faith in the purpose of Providence which nothing can shake—equipped with these, the worker must start on his mission and reverently seek the joy which comes of spending oneself in the service of one's country.

The Servants of India Society will train men, prepared to devote their lives to the cause of the country in a religious spirit, and will seek to promote, by all constitutional means, the national interests of the Indian people. Its members will direct their efforts, principally towards (1) creating among the people, by example and by precept, a deep and passionate love of the motherland, seeking its highest fulfilment in service and sacrifice; (2) organizing the work of political education and agitation, basing it on a careful study of public questions and strengthening generally the public life of the country; (3) promoting relations of cordial goodwill and co-operation among the different communities; (4) assisting educational movements, especially those for the education of women, the education of backward classes and industrial and scientific education; (5) helping forward the industrial development of the country; and (6) the elevation of the depressed classes...

---

# **The Servants of India Society**

## **REPORT FOR 1968-69**

### **Introduction**

The Servants of India Society was founded by Gopal Krishna Gokhale on June 12, 1905. Its objects are the training of national missionaries for the service of India and the promotion, by all constitutional means, of the interests of the Indian people without distinction of caste or creed. The members of the Society are pledged to give throughout their lives the best that is in them to the cause of the country in all secular fields. The circumstances in which the Society was founded and the objects, which the Founder had in view in founding it, are explained in the preamble he wrote to its constitution in 1905, extracts from which are given in the preceding two pages. The preamble has been a source of inspiration to the Society during the sixty-four years of its existence.

### **Organization**

The headquarters of the Society are at Poona, where the members meet every year in June for its annual session. The Society has branches in Madras, Bombay, Nagpur and Allahabad and centres of work at Cuttack and Kozhikode.

Pandit Hriday Nath Kunzru continued to be President and Shri A. D. Mani, Vice-President of the Society. Shri D. V. Ambekar, Shri A. D. Mani, Shri Dinkar Desai and Shri R. S. Misra continued to be Senior Members of the Society's Branches in Poona, Central India, Bombay and Uttar Pradesh respectively. Shri R. S. Gupte, Shri S. G. Gokhale and Shri S. R. Venkataraman were elected to the Council by the members of the Society. Shri Gokhale continued as the Society's Secretary.

### **Gokhale Day Dinner**

The usual dinner arranged on the Gokhale Day (May 9th) at the Headquarters was attended by all the members in Poona, the expenses being met out of the interest on an endowment created for the purpose by the late Shrimant Babasaheb Ghorpade, Chief of Ichalkaranji.

## Gokhale Day

The Gokhale Day, this year, was observed, not only in Madras and Cuttack but also in the Society's centres such as the Thakkar Bapa Gurukulam, Nirgacimund, Nilgiris, ( Tamilnadu ), the Thakkar Bapa Gurukulam, Zonangipalem, ( Andhra Pradesh ), Gokhale Upper Primary School, Mudadi, Sastriar U. P. School, Chelode, Devadhar U. P. School, Nediyrup, Devadhar L. P. Schools at Pulliyil and Karulai, ( Malabar ) when speeches were made on the life and mission of Gokhale, and his portrait was unveiled in each of these schools.

## Sastri's Birth Centenary

On the initiative of Shri S. R. Venkataraman, a committee was formed in Madras, to take steps to celebrate the Birth Centenary of V. S. Srinivasa Sastri, a former President of the Servants of India Society. The Committee decided to bring out, in two volumes, Sastri's select speeches and writings on political, educational and cultural matters. Dr. Kunzru attended a meeting of the Committee, during his visit to Madras in January 1969. The two volumes are expected to be out by the end of July 1969.

Sastri's birthday was observed by holding an oratorical contest in English for college students and a public meeting at which prizes were awarded to the winners. As usual, an issue of " Sastriana " containing Sastri's article on the ' Schoolmasters' Test ' contributed to the *Madras Review* in 1898 was released.

## General

The work of the Study Team on Railways, of which the President, Dr. H. N. Kunzru was chairman, was completed towards the end of November last. The Team was appointed by the Administrative Reforms Commission; and its task was to look into questions relating to the administration and finances of the railways. Its work involved considerable touring, interviews with railway officials and visits to important workshops and ports.

Dr. Kunzru continued to be the President of the Indian Council of World Affairs and chairman of the Board of Governors of the School of International Studies in New Delhi. The School enjoys the status of a university under the University Grants



Commission Act and confers its own degrees. It admits only such students as have passed their M. A. examination in certain specified subjects. It has various departments of study including East Asia ( the Far East ), South-East Asia, South Asia, West Asia ( Middle East ), Soviet studies and American studies.

Arrangements for the celebration of the Council's silver jubilee engaged Dr. Kunzru's attention for some time. He presided over a lecture by the British Foreign Secretary, Mr. Michael Stewart and another by the Ceylonese Prime Minister, Mr. Dudley Senanayake. Both lectures were organised by the Indian Council of World Affairs. At the luncheon organised by the Council in honour of the visiting Canadian Parliamentary Delegation, it fell to him to welcome it in a suitable speech. During his visit to Madras in January, he addressed the Madras Branch of the Council on 'India and Her Neighbours--Pakistan and China'.

He attended several meetings of the Committee on Defections appointed by the Union Home Minister during the year. His visit to the Nagaland in April 1968 enabled him to see things there for himself. He was glad to find that in consequence of the ceasefire agreed to by the Government of India and the underground Nagas, appreciable social and economic progress had taken place. He gave evidence in August before the Joint Parliamentary Committee which was considering the Bill relating to the Lok Pal and Lok Ayukta. He also appeared before the Committee, presided over by Dr. G. S. Mahajani which was asked to prepare a suitable syllabus for the National Defence Academy at Khadakwasla.

He addressed the Progressive Club at Allahabad in August on the " Russian Aggression against Czechoslovakia ". He presided over a seminar on ' World Peace and Democracy ', which was arranged in connection with the Gandhi Centenary in New Delhi in September. He presided over a lecture by Prof. Menzies of the Columbia University on ' Border Areas ' and over the annual day function of the Indian School of International Studies in October. His talks in English and Hindi on Gandhiji's life and work were broadcasted by All-India Radio on Gandhiji's birthday, the 2nd October. The same day he addressed a rally of RSS volunteers. In his speech he pointed out how the old

Indian culture had brought about the integration of the races that entered India with the indigenous population. He also pointed out how Gandhiji prepared the soil for satyagraha and how he worked for unity between different communities, classes and cultures as a pre-requisite to the commencement of satyagraha. Dr. Kunzru exhorted his hearers to follow Gandhiji's example.

Dr. Kunzru presided over the U. N. Day celebration in Delhi which was held jointly by the Indian Council of World Affairs and the Indian U. N. Day Committee, and over a symposium under the auspices of the Indian Federation of UN Associations in connection with the Declaration of Human Rights. He said the Declaration of Human Rights had hardly been observed in practice anywhere. Our own record in respect of our treatment of the Harijans, scheduled tribes and our other backward countrymen was far from creditable. The "Right to Development" was the subject of another symposium arranged by the same Association, over which also Dr. Kunzru presided.

He paid about a week's visit to Kashmir so as to acquaint himself with the latest developments in the political situation there.

Shri A. D. Mani continued to be a member of the Rajya Sabha and the Chief Editor of the *Hitavada*, Nagpur and Bhopal.

Speaking in the Rajya Sabha on the Contempt of Court Bill, Shri Mani said that the procedure of filing an affidavit in Contempt of Court proceedings was unsatisfactory. A Commission of Enquiry should not come within the ambit of the Law of Contempt. The bill required to be amended because members of Parliament would run many hazards if there was no proper definition of Contempt of Court.

Shri Mani, speaking on a non-official bill seeking to abolish privy purses, opposed the bill. He pointed out that nearly five crores of rupees were being spent on the privy purses, but ten times five crores had been gained by the integration of these areas with the rest of India. Their (Princes') successors would get reduced purses and in course of time all these privy purses would disappear.

Speaking on a motion to consider the newspaper strike, Shri Mani said that Wage Board Awards should not be recommen-

datory but should be mandatory. He said that the Wage Board for non-working journalists had an independent member and that its recommendations were on the high side. The Government had no right to withdraw newsprint quota for newspapers because that was incidental to freedom of expression.

Speaking on the Constitution Amendment Bill relating to the reorganization of the State of Assam, Shri Mani referred to Clause 2 of the bill proposing the creation of an autonomous State including Garo and the United Khasi and Jaintia Hills. He said that this was a new experiment and other areas would demand such a solution for their problems. This will create a dangerous precedent.

Speaking on the Payment of Bonus Act Amendment Bill, Shri Mani said the bill was a negation of a decision taken by Parliament when the Payment of Bonus Act was considered in great detail. It was the recommendation of the Bonus Commission that the rebate that an employer got in respect of bonus should be available to him. It was on that basis that Parliament gave its consent to the Payment of Bonus Act. A decision which negates an earlier decision by Parliament should not have been taken by Government in the form of an Ordinance.

Speaking on the Railway Budget, Shri Mani congratulated the Railway Minister on anticipating a surplus. He said, we had invested over Rs. 3,000 crores in the Railways and employed as many as one million men. But the point was whether all this staff engaged by the Railways was absolutely necessary for the performance of its work. It was very unpopular to raise demands for retrenchment on the railways, but the working expenses were galloping from year to year, and the Railways would be forced to consider the question of retrenchment at some stage. It might be necessary to retrench a large number of the superior officers on the railways. In spite of the increase in fares, there had not been a substantial increase in the revenue derived from passenger traffic. If the passenger fares were not reduced, there would be a substantial diversion of passenger traffic to road transport, because it would be impossible for the poor man to travel on the railways in future. During the year the railways had not been able to handle coal traffic in

a satisfactory manner. The present production of coal was 12·8 million tonnes and in the next few years it was expected to go up to 21·40 million tonnes. If the railways did not have a satisfactory programme for lifting all this coal and moving it to the areas where it was required, they would not be able to satisfy the consumers of coal.

Speaking on the General Budget, Shri Mani said that the Finance Minister should be thanked for not imposing heavier burdens on the investing and the middle classes. In the last nineteen years he had not only trebled the total revenue but raised it to six times what it was in 1950-51. He was against the taxation of motor spirit which would place burdens on the transport system in the country.

Speaking on the motion regarding the Shiv Sena, Shri Man said some of the activities of the Shiv Sena had disfigured the life of Bombay. There was no point in confusing the Shiv Sena agitation with a deep sense of frustration and resentment which was now being felt in Maharashtra and in Mysore about the non-settlement of the border question. Since all the sections of the House had expressed views strongly against the Shiv Sena, Government should, if necessary, declare the Shiv Sena and other similar organizations unlawful.

Shri Dinkar Desai continued to be a Member of the Lok Sabha, representing the North Kanara District in Mysore State.

Speaking on the demands for grants of the Ministry of Steel, Mines and Metals, Shri Desai said that the performance of the Ministry was most disappointing. The public undertakings of the Ministry were incurring huge losses. There were more labour troubles in the public sector undertakings than in the private sector, as party politics was brought into the trade union movement. Unless the cost of production was brought down, we would not be in a position to export our steel. In order to export iron ore in larger quantities, it was necessary to improve loading facilities at our ports. Karwar should be developed as a modern port for speedily exporting the rich iron ore from the Bellary-Hospet area.

Shri Desai, speaking on the demands for grants of the Ministry of Information and Broadcasting, said that there should be complete

impartiality in selecting political news for broadcasting. There was no such impartiality. He deplored the control of the newspaper industry by a few capitalists and pointed out that they commanded about 80 per cent of the circulation. Government should appoint a High-Power Commission to go into this question.

Speaking on the reorganization of the Planning Commission, Shri Desai urged that the Prime Minister should cease to be the Chairman of the Planning Commission, as recommended by the Administrative Reforms Commission. No Minister should be a Member of the Planning Commission; it must be a body of experts only. The presence of Ministers on the Planning Commission gave the impression that these Ministers, coming from different States, might favour certain States in formulating the Plans. This impression should not be created, particularly in the present political set-up.

Speaking on the Gold Control Bill, Shri Desai stated that the objectives of the Bill would not be achieved by legislation of this kind. According to him, the Gold Control Order was a failure. Such legislation would only lead to corruption and the harassment of goldsmiths. It would adversely affect the gold craftsman. He, therefore, asked the Government to withdraw the Bill.

Speaking on the motion to set up a Committee on the welfare of Scheduled Castes and Scheduled Tribes, Shri Desai said that this problem could not be solved by appointing committees. Government should spend adequate funds for the welfare of these people. He pointed out that only Rs. 14 crores were spent during one year. This was very inadequate, as the total population of Scheduled Castes and Scheduled Tribes was 10 crores.

Speaking on the report of the Road Transport Taxation Enquiry Committee, Shri Desai pointed out that the taxes on the road transport industry had been increasing much more speedily than the general taxation in the country. For instance, the total tax on a truck during its life-time was more than 50 per cent of the cost of the truck.

Speaking on the Public Employment (Amendment) Bill. Shri Desai said that the trouble in Telangana was due to the fact that the region was completely neglected both by the State and by the Central Government. It was necessary that special attention

should be paid to the economic development of all backward areas in the country. Unless this was done, we could not have national integration.

Shri Desai was a member of the Advisory Committee for Posts, Telegraphs and Telephones for the Mysore Circle, set up by the Communications Ministry. He made several representations during the year to the Post-Master-General, Mysore Circle, urging him to open new Post Offices and public telephone call offices in certain villages in North Kanara District. Some of these representations were successful. Shri Desai was an ex-officio member of the Mysore State Development Council and also of the District Development Council of North Kanara. He attended the meetings of the District Development Council at Karwar during the year.

Shri Desai toured his constituency five times during the year. He addressed public meetings during his tour and met the village leaders. He made several representations regarding various grievances of the people to the Ministers of the Mysore Government from time to time. Some of these grievances were redressed.

Shri S. R. Venkataraman was the Hon. Secretary of the Indian Council of World Affairs, Madras Branch, which held two meetings during the year.

A seminar on Human Rights was held in Madras in cooperation with the UNESCO and the Guild of Service. Shri Venkataraman contributed a paper on "Human Rights and Education".

Shri D. V. Ambekar continued to be a member of the Council of the Deccan Sabha, Poona; Shri S. G. Gokhale continued to be its working secretary.

Shri S. S. Ajgaonkar was re-elected Secretary of the Bombay Social Reform Association. During the year the Association arranged four meetings of student and non-student youth, in connection with the integration programme of the Indian Social and National Integration Centre started by the Association in 1963. The meetings were addressed, among others, by Dr. P. B. Gajendragadkar and Shri B. N. Gokhale. The Association also celebrated the International Human Rights Year in December 1968.

Shri Ajaonkar was a member of a special committee appointed by the Bombay Social Reform Association under the presidency of Dr. P. B. Gajendragadkar, for the compilation of a Common Civil Code for all communities in India. The Committee held its first meeting on the 20th November 1968 and the Committee took notice in particular of the divergence that exists amongst the different communities in India in respect of flexibility of views on religions, the tempo and speed of social and economic modernisation, formulation and growth of public opinion in favour of social reform through legislation. The Committee decided, as a first stage of the project, to start with the codification of the law of succession accompanied by an extensive commentary by way of presenting a comparative analysis of the diverse provisions of the law on the subject and highlighting the gulf that exists between the provisions of the Code and the current social, religious and legal norms of each particular community in India.

#### **Welfare of the Aborigines**

Dr. Kunzru continued to be one of the Vice-Presidents of the Bharatiya Adimjati Sevak Sangh, Delhi. He addressed the All-India Tribal Conference which was held at Boradi in Dhulia District (Maharashtra State) towards the end of December. He advised the tribal people to put greater pressure on the State Governments to have their grievances removed and to assert themselves at the time of the elections.

Shri R. S. Misra devoted most of his time to the aboriginal welfare work in the Mirzapur and Allahabad Districts. The Society maintained four junior high schools, ten primary schools for boys and five primary schools for girls. All the junior high schools had hostels attached to them. The total number of students in the ten primary schools for boys and five primary schools for girls was 860, of whom 516 were boys and 344 girls. The Adivasi and Harijan students numbered 553. Books and writing material costing Rs. 2,618 were supplied free to these students and a few scholarships were given to some of them. The total expenditure on Primary Schools was about Rs. 33,000.

One Ashram type school for primary school boys was maintained at Khantara in the Mirzapur district at a total cost of Rs. 18,694 during the year under report.

Of the four junior high schools maintained by the Society, there were three in the Mirzapur and one in the Allahabad district. The total enrolment in these schools was 485 including 167 Harijan and Adivasi boys and girls. Books, writing material and other educational equipment worth Rs. 1,683 were supplied to them free. The total expenditure on the maintenance of the junior high schools was about Rs. 54,000.

Four hostels were maintained for the benefit of the students of the junior high schools. One hundred and thirty-five Harijan and Adivasi children resided in these hostels. The total expenditure on the maintenance of these hostels was Rs. 21,214. Of this amount, Rs. 15,000 were sanctioned by the State Government for the maintenance of the Harijan and Adivasi children. This money was utilised for maintaining 65 Adivasi students of junior high schools at Muirpur and Salkhan from November 1968 to March 1969. Besides clothes, 124 blankets worth Rs. 2,728 were given to them.

Women's Welfare Centres were maintained at Sarsa, Delaunha and Bharatganj in the Allahabad district and at Dudhi and Bhuili Khas in the Mirzapur district. Two hundred and one women attended these centres regularly and learnt tailoring, embroidery and knitting. An exhibition of the articles produced at these centres was held at Sarsa on the 19th and 20th February, 1969. Several thousand people visited the exhibition. At the close of the exhibition, a cultural programme was organized which was largely attended. The total expenditure on the Women's Welfare Centres was about Rs. 12,750.

The Society started one Adult Women's Education Centre at Sarsa which offered a condensed course, leading to the Junior High School examination conducted by the Education Department. The object of the scheme is to provide educational facilities to women in distress to pass the Junior High School examination in two years instead of the normal period of three years. Those who passed the examination will become eligible for employment as teachers in Zilla Parishad schools. The first batch of 30 women who completed two years of study at the centre has appeared at the final examination.



With a view to properly organise and develop the Society's tribal welfare work in the U. P. including the border area, the U. P. Branch of the Society constituted the U. P. Tribal Welfare Committee with Dr.H.N.Kunzru, as its Chairman. The Government of India have nominated the Zonal Director, Backward Classes Welfare, Baroda, as its representative on the Committee. The State Government is represented by its Special Officer for Tribal Welfare. The Committee met in December 1968 and discussed the broad lines on which the work should be developed. The Committee has decided that an intensive work centre of tribal welfare should be started at village Suraicha in the Lapar area in Tahsil Meja in Allahabad District which is inhabited largely by Kols. A primary school and a dispensary have just been started as the first step.

Since the Bharatiya Adimjati Sevak Sangh has decided to take up tribal welfare work in the border areas in co-operation with the Servants of India Society, Shri R. S. Misra toured Naini Tal, Almora and Pithoragarh districts at their request to study the socio-economic condition of the newly recognised tribes in U. P., namely the Bhoksas, Ban Manas, Bhotia and Tharus. He has prepared a tentative plan of starting schools and dispensaries and submitted it to the Government of India. One Bhoksa boys' hostel in the Naini Tal district will soon be started at Bazpur. The Government of India have already called for a scheme with details of expenditure and the State Government have commended the scheme.

Shri R. S. Misra was a member of the General Council and the Executive Committee of the Bharatiya Adimjati Sevak Sangh. He attended the Tribal Welfare Conference at Boradi in the Maharashtra State. He was nominated to represent the Servants of India Society on the Planning Commission's Panel for Backward Classes Welfare and attended its meetings.

Shri S. R. Venkataraman continued to look after the Thakkar Bapa Gurukulam, Zonangipalem in Sriharikota Island in Nellore District ( Andhra Pradesh ). In the Gurukulam meant for the benefit of the Yenadis, a most primitive tribe in the island, there were 22 Yenadi children including 12 Yenadi boys and 10 Yenadi girls in the boarding house attached to the Gurukulam. The hostel is in

charge of a Warden who is also the Headmaster of the school. In the school attached to the Gurukulam the total number of pupils was 77 including the 22 Yenadi inmates of the boarding house. Children of school-going age representing the backward classes, Muslims, and caste Hindus in the neighbourhood also attended the school.

Shri Venkataraman looked after the affairs of the Thakkar Bapa Gurukulam, Nirgacimund, near Ootacamund in the Nilgiris. In the Boarding House attached to the Gurukulam there were 25 Toda boys, 15 Toda girls and 7 Kota boys. The inmates were given free board and lodging, free medical aid, clothes and education. The children were taught gardening and agriculture in the land attached to the school. A library containing books in Tamil dealing with India's culture and history suitable for children has been organized and it is being availed of both by teachers and by the pupils. Children are told stories from our great seers, saints and heroes from time to time by the Warden and the class teachers. The School attached to the Gurukulam had on its roll 35 girls and 75 boys. During the year under report, the sixth standard was opened. It is proposed to open the seventh standard in the year 1969-70.

The schools in Malabar started in 1921-22 as a part of the Society's welfare activities after the Moplah Rebellion and the schools started later for the benefit of the backward classes and tribes, were being looked after by Shri Venkataraman who is their Manager and Correspondent. The schools now functioning are as follows :

(1) The Gokhale Upper Primary School, Mudadi, (2) the Sastriar Upper Primary School, Amarambalam, P. O. Nilambur, (3) the Devadhar Upper Primary School, Nediyrup, (4) the Devadhar Lower Primary School, Pulliyil, and (5) the Devadhar Lower Primary School, Karulai. The total number of pupils in the five schools was 2,229. During the year the portraits of Gokhale, Sastri, Devadhar and Thakkar Bapa were unveiled in all schools and well-known people in the locality spoke about the services rendered by them to the country in the fields of politics, education and social welfare.

Shri Venkataraman attended the Madras State Tribal Advisory Council meeting which was held at Salem on the 13th December under the chairmanship of the Minister for Harijan Welfare, Shrimathi Satyavani Muthu. At the invitation of the Minister, he addressed a public meeting of Harijans in Salem town and exhorted them to educate their children, to take advantage of the facilities offered by the Harijan Welfare Department and to work for the success of prohibition. Shri Venkataraman also visited the Tribal Development block in Yercaud in Salem district. He attended the tenth All-India Tribal Welfare Conference at Boradi in Dhulia district, (Maharashtra), and took part in its proceedings.

Shri Venkataraman also attended another Tribal Welfare Conference at Erukkancheri, ten miles north of Madras. About 500 Villis, a tribe corresponding to the Yenadis in Andhra, attended it. He advised the Villis assembled, to send their children to school, to keep themselves clean, to refrain from taking loans from professional moneylenders at high rates of interest and to use the co-operative credit societies always and to give up drinking.

During the year Nayanar scholarships to Harijan students studying in the professional colleges were awarded to three boys in the N. S. S. Engineering College, Palghat, and to three girl students in the Medical College, Calicut, on the recommendation of the principals of the respective colleges, at the rate of Rs. 50 each. Since Harijan students are getting substantial help from both the Central and the State Governments, Nayanar scholarships were given only to those poor students who had failed once but who, in the opinion of the Principals, if given some help, would complete the course.

Shri Madhusudan Sahoo was in charge of the Thakkar Bapa Ashram at Rayagada in the Koraput District in Orissa. This hostel for Adivasi students has been in existence since 1939, doing tribal welfare work in the district. At present the Servants of India Society is engaged in promoting education and giving medical aid to the tribal people. The Society has two hostels for 50 students at Rayagada, four primary schools and a Maternity Home at Hazaridangu.

There were 33 boys in the Boys' Hostel and 17 girls in the Girls' Hostel. Out of these students 11 boys were reading in the local High School, 6 girls were reading in the Girls' High School and the remaining ones were prosecuting their studies in the U. P. School attached to the Ashram. Three of them have been chosen for the M. E. Scholarship Examination. A matron in charge of the Girls' Hostel imparts training in tailoring also.

A Deputy Superintendent has been appointed mainly to coach weak students. During the year, the progress of the students in their studies was highly satisfactory. Five students of our Ashram U. P. school, of whom four were Adivasi students, won all the five merit scholarships of the Rayagada Sub-division. Four boys of our Ashram School have held the first four positions in the seventh class of the local high school.

There were four Primary Schools under this centre. The daily average attendance in all these schools was about 110.

The Society conducts a Maternity Home at Hazaridangu. This centre was being managed by a trained mid-wife. During the year she conducted 32 delivery cases in the huts of the patients and visited 65 ante-natal cases. She also distributed vitamin and iron tablets to ante-natal and post-natal cases suffering from deficiency diseases.

### **Rural Welfare and Cooperation**

Dr. R. G. Kakade was a member of the Executive Committee of the Maharashtra Rajya Cooperative Wholesale Consumers' Societies Federation till December 1968. He continued to be a member of the Board of Directors of the Poona District Industrial Cooperative Association and also of its Standing Committee.

He continued to be a member of the Rural Industrialization Committee of the Sangamner Project in Ahmednagar district. He continued to guide and help the Yeravda Gadi Wadar Cooperative Majoor Society which he helped to establish in 1948. This is the biggest quarry-working society in the State.

Dr. Kakade continued to be Honorary Secretary of the Deccan Agricultural Association. The Association's engineer-members conspired the Varana Project in a couple of meetings. He accompanied

them to the Varana area in both Sangli and Kolhapur districts to study the proposed site of the dam, the area of submergence, etc. The Project, estimated to cost about Rs. 37 crores, is expected to irrigate about 2,25,000 acres of land in Sangli and Kolhapur districts. The work of the Association's monthly journal—*Shetaki* and *Shetakari*—kept him busy for a considerable time every month.

He was one of the members of the Board of Trustees of the Institute of Regional Development Planning at Wardha. Besides carrying on some research schemes, the Institute has been helping Zilla Parishads and other agencies in their development schemes. It serves the eight districts of Vidarbha.

Shri R. S. Gupte continued to be in charge of the Rural Centre at Shendurjana Bazar in Amravati District (Maharashtra State). He was the treasurer of the Multipurpose Co-operative Society, a position he has held since 1946.

He was elected in September, 1968, to represent the M. P. Co-operative Society on the Amravati District Central Co-operative Bank and also the Chandur Taluq Agricultural Co-operative Kharedi-Vikri Samiti. As a member of the Managing Committee of the Kharedi-Vikri Samiti, he also automatically became a member of the Dhamangaon Cotton and Grain Markets Committees. He attended their meetings also at Dhamangaon. In January 1969 he went on a study tour of the Western Maharashtra Cotton and Grain Markets. These are now being organized to develop agricultural produce marketing under the Maharashtra State Agricultural Produce Marketing Act.

Shri Gupte continued to be a member of the Seva Sahakari Society. The construction of the Society's godown begun last year will be completed in September 1969.

Shri Gupte continued to be a member of the Chandur Taluq Food and Civil Supplies Advisory Committee. He attended its meeting when the question of the distribution of Government grain to holders of more than five acres of land was considered. The Committee was able to get the concession raised to holders of up to ten acres. He continues to be a member of the Tiwsa Circle Nyaya Panchayat.

The Rural Centre, as in previous years, distributed cotton seed worth about Rs. 6,500. The recovery of cotton seed dues has been comparatively satisfactory this year. The agricultural operations of the Rural Centre have shown a surplus of about Rs. 2,200 during 1968-69.

### Education

Dr. Kunzru continued to be a member of the Courts of the Allahabad and Aligarh Universities. He was the President of the Allahabad University Alumni Association and attended meetings of its executive committee.

He continued to be a member of the Managing Committee of the Delhi School of Social Work as a representative of the Delhi University. Though styled a school, it is in fact a college affiliated to the Delhi University.

He continued to be one of the Trustees of the India International Centre in Delhi and a member of the Governing Body of the Indian Council for Cultural Relations.

He presided over the three committees of the Indian School of International Studies for the selection of a professor of International Economics, for a professor of International Law, and for a professor of European Studies.

He was a member of the Board of Governors of the Central Institute of English at Hyderabad for a part of the year and took keen interest in its work.

He addressed the Mysore University Convocation on January 18, 1969. In his address he held out a warning against the premature introduction of regional languages as media of instruction in Universities. He also emphasized the importance of a systematic study of English in the interest of the country's progress. Analysing the causes of the strikes by students, Dr. Kunzru pointed out that strikes backed by teacher politicians were more prolonged and had more serious consequences. The strikes were also sometimes politically oriented. Whether political parties incite students to strike or not, their support to their own groups lends political colour to the strikes. In his opinion, the raising of the standard of humanities in universities and liberal scholarships to deserving students to prosecute higher studies were among the

remedies to meet the situation. But the real cure was the courage and understanding shown by the students themselves.

As President of the Anjuman Taraqqi Urdu Hind (Society for the promotion of Urdu) he attended meetings of the various bodies connected with the Anjuman. He welcomed the Prime Minister, Mrs. Indira Gandhi, at the foundation laying ceremony of the Urdu Ghar by her in New Delhi. The Ghar is intended to serve as the Anjuman's headquarters. In September he led a deputation of the Anjuman to the Prime Minister in order to ask her for a donation of Rs. 4,00,000 for the construction of its headquarters. The deputation sought the donation in the context of the celebration of the famous Urdu poet Ghalib's centenary and also in view of the promise by Moulana Azad made to one of the former secretaries that the Government would donate half the cost of the building

He spoke at the general session of the All-India University Teachers' and Students' Camp held at Bombay in May 1968. The main business of the students, he said, was to acquire knowledge; for lack of it would lead to stagnation and decay. They must also learn to be tolerant while receiving education. He had no objection to students discussing political questions to keep themselves abreast of political developments, but opposed their participation in it.

In October he was busy with the meetings of the Advisory Panel on Education appointed by the Planning Commission.

He toured the North Kanara district in January with a view to acquainting himself with Shri Dinkar Desai's educational work there. He visited the Gokhale Centenary College and some high schools conducted by the Kanara Welfare Trust, of which Shri Desai is the Chairman. He was greatly pleased to find that the standard in these institutions was higher than in similar institutions elsewhere.

Shri Mani was a member of the Board of Governors of the Indian Institute of International Studies and also a member of its Executive Committee.

Shri Dinkar Desai is the Chairman of the Kanara Welfare Trust which was founded in 1953. The aims and objects of the

Trust are to undertake measures for the educational, cultural and social advancement of the people in general, and the backward classes in particular, in the North Kanara District of the Mysore State. Shri Desai devoted considerable time to the work of the Trust including the work of collecting donations. About Rs. 1,34,000 were collected during the year. The Trust today has total assets worth about Rs. 20 lakhs, including the value of the lands granted free by Government for its educational institutions. The annual recurring budget of the Trust is about Rs. 7,00,000.

**Gokhale Centenary College :** This College, which is conducted by the Trust and which was opened at Ankola in June 1966, fulfils a long-cherished need for an institution of higher education there. It has both Arts and Science sections. The College is affiliated to the Karnatak University. The College, which was established during the Birth Centenary year of Gopal Krishna Gokhale, is named after him as part of the Centenary Celebrations inaugurated at Poona by Dr. Radhakrishnan, the then President of India, on the 9th May, 1966.

The College has a young, competent and devoted staff. It has a well-equipped Laboratory and Library. It has introduced the N. C. C. for both boys and girls. A special feature of the College curriculum is the tutorial system under which students receive individual attention. The College will develop into a full-fledged institution in June 1969 and teach up to the B. A. and B. Sc. degree courses. The strength of the College at present is 855. Of these 193 are girls. As many as 769 students belong to the backward classes.

The College was shifted to its own buildings in June 1967. The third wing was constructed during the year. A separate building for the Library will be taken up for construction next year. The College campus, which forms the slopes of a beautiful hill, extends over 75 acres.

The College showed satisfactory results in the various University Examinations. In the P.U.C. Examination in Arts, 116 students out of 355 passed the examination. The percentage of successful students was 32.6 as against 27 per cent for the whole University. In the P.U.C Examination in Science, 55 students out of 142 were successful. The percentage of successful students was 38.7 as



against 32.4 for the University. In the B. A. Part I Examination, 78 students passed out of 141. The percentage of successful students was 55.3 as against 44.6 for the University. In the B. Sc. Part I, 41 students out of 66 were successful. The percentage of successful students was 66.1 as against 56.8 for the University. In the P.U.C. Arts Examination, 15 students obtained the Second Class. In the P.U.C. Science Examination, 7 students secured First Class and 20 students secured Second Class. In the B. A. Part I Examination, 1 student obtained a First Class standing third in the University, and 8 students secured a Second Class. In the B. Sc. Part I Examination, 3 stood in the First Class and 16 in the Second Class.

The Trust conducts 15 High Schools in eight talukas in the North Kanara District. They are situated at (1) Ankola; (2) Baad-Kagal; (3) Shirali; (4) Dandeli; (5) Kadtoka; (6) Kadwad; (7) Kasarkod; (8) Murdeshwar; (9) Mirjan; (10) Arge; (11) Dhareshwar; (12) Bedkani; (13) Katgal; (14) Anilgod; and (15) Kulve-Baroor. In addition, the Trust is conducting an English Medium Middle School at Dandeli.

The High School at Ankola is a Multipurpose Vocational Institution teaching agriculture, horticulture and tailoring, in addition to the ordinary academic subjects. Horticulture for boys and tailoring for girls are compulsory subjects in all the High Schools. Bee-keeping is also taught as an extra-curricular subject in all schools.

Since the educational institutions of the Trust are in villages and backward areas, the proportion of backward class students was high. As many as 2,244 pupils out of a total of 3,731 in all the institutions belonged to backward classes. Of these backward class pupils, 1,694 were boys and 550 were girls.

In spite of the fact that all the High Schools of the Trust are in villages and a majority of students belonged to backward classes, the S.S.L.C. Examination results were satisfactory. Out of 538 students who appeared from these High Schools, 292 came out successful. Thus the percentage of the successful candidates was 54.2 against the average of 30.9 for the whole Mysore State.

The Trust is conducting a hostel at Ankola, named after Thakkar Bapa. There were 19 inmates in the Hostel. Poor students in the Hostel were given board and lodging free.

Shri Sharangpani continued to be associated with the work of the Students' Welfare Association, which is running two hostels for 150 College and University students and four messes at which about 350 students coming from economically backward classes and rural areas for college and university education are given meals at a subsidised rate of Rs. 30 a month.

Dr. Kakade was elected to the Council of the Maharashtra Association for the Cultivation of Science. The Association promotes research in various branches of science and has published a large number of research papers and books during the last twenty years. It receives grants from the Central and State Governments and is affiliated to the Poona University.

Dr. Kakade was a member of both the Executive and Managing Committees of the Karve Institute of Social Service. The Institute's post-graduate diploma course has been recognised by the Poona University, which conducted its examination for 1968-69. The Institute also runs an under-graduate certificate course in social service, besides conducting research programmes concerning women and children. The State Government has recognised the diplomas and certificates of the Institute and deputed its welfare officers to it for giving training.

The Shendurjana Rural Centre looked after by Shri R. S. Gupte manages the Pilot Library sponsored by the Education Department of the Maharashtra State. The main supply of books to the library, in the form of renewals, comes from the Government District Library at Amravati. A servant who looks after the library circulates books from house to house among women readers particularly, because they do not like to visit the library.

Shri Ajgaonkar continued to be the secretary of the Education Committee of the Social Service League, Bombay. In that capacity he was actively associated with the League's Day High School, Night High School, N. M. Joshi Social Workers' Training Class and two libraries and reading rooms. He worked on the supervising committees of the League's Industrial Schools for women and the Mafatlal Gagalbhai Technical School.

## Social Service

Dr. Kunzru continued to be the General Secretary of the All India Seva Samiti at Allahabad and attended meetings of its executive committee and general council. He has been re-elected General Secretary of the Samiti for another term of three years.

All the Social Welfare activities of the Kanara Welfare Trust, of which Shri Dinkar Desai is the Chairman, are conducted through the Thakkar Bapa Seva Kendra. The Ankola Centre of the Seva Kendra conducts a Tailoring School for the benefit of the backward-class and other girls. Tailoring, embroidery, knitting and toy-making are taught. No fees are charged. Harijan girls were supplied cloth free of charge for tailoring. The school is adequately equipped with twelve sewing machines and other accessories. The number of pupils on the register during the year was 42. The school is recognised by the Board of Technical Education of the Mysore Government. During the year 23 pupils appeared for the Tailoring Examination of this Board. As many as 22 came out successful. One stood in the First Class.

The Trust is conducting a Sanskara Kendra at Ankola with the financial aid of the Education Department. The objects of the Kendra are to provide opportunities for Harijan children to educate themselves in healthy environment. This helps them to mix freely with the children of other castes and communities. A Recreation Centre is maintained for this purpose.

The Trust has established a Harijan Colony at Ankola where nine families are settled. Each family is provided with a dwelling hut, and is given land for fruit and vegetable cultivation. The huts are now being replaced by pucca tiled houses. Adequate arrangement for water supply has been made by digging a big well. The purpose of this Colony is to show how the landless poor in our villages can be settled.

Shri Desai was in charge of the schemes conducted by the Servants of India Society for the benefit of the backward classes in North Kanara, for which the Central Government gives financial assistance.

The backward class pupils who attend our schools from considerable distances were daily given mid-day snacks free of charge.

Backward class poor pupils were also supplied free clothing and text-books in all our High Schools under this scheme. The total amount spent during the year under this scheme exceeded Rs. 23,000.

The Trust conducts the social welfare weekly *Janasevaka* in Kannada which is the regional language. The journal publishes informative articles on social, educational, cultural and economic problems. Articles on current topics are also published. The weekly is printed at Ankola in the Press owned by the Trust. Shri Desai wrote every week the front-page article, and also the editorials.

Shri Desai continued as General Secretary of the Social Service League, Bombay, during the year. The League is one of the oldest social welfare institutions in Bombay. The League conducts three High Schools, three Libraries, two Reading Rooms, six Industrial Schools for Women, and a Textile Technical School. It also conducts two Dispensaries.

Shri Venkataraman continued to be a member of the Central Executive Committee of the Indian Council of Social Welfare, Bombay, and Joint Secretary of its Madras branch; one of the Vice-Presidents of the Indian Council of Child Welfare, Madras branch and, the Chairman of the Bala Sevika Training Committee. He attended the meetings of the Indian Council of Social Welfare at Bombay and at Madras and of the Council of Child Welfare at New Delhi, which sanctioned a grant of Rs. 50,000 for the Madras branch to run its Bala Sevika Training Course. Shri Venkataraman was elected as the Hon. General Secretary of the Guild of Service. The Guild is a well-known social service agency in the State, which has been rendering useful service for over three decades, for the under-privileged. Among its activities are: hospital visiting, toy distribution for children in hospitals, running nursery schools in hospitals, the Madras School of Social Work, a post-graduate training institute in social science, family planning centres in slums, four homes for destitute children sponsored by foster parents in Canada, America, India, New Zealand, etc., a working women's hostel, a working boys' hostel, training for girls for house-keeping, the Bala Vihar—an institution for the mentally and physically handicapped, a mobile unit for popularising whea

preparations and a Juvenile Guidance Bureau, and distribution of foreign gifts.

At the two prohibition conferences, one held in Madras in April last and the other in New Delhi in March 1969, Shri Venkataraman urged the need for starting more rural industries to reduce unemployment and to stop illicit distillation in rural areas. He also suggested the inclusion of lessons in the text-books on the evil effects of drinking on health and mind, in the upper primary and secondary stages in schools and the effective enforcement of the provisions of the Prohibition Act.

Shri Venkataraman was a member of the Slum Committee appointed by Government to tackle the problem of slums. He suggested the control of the large influx of people from rural areas into the city in search of jobs, the dispersal of industries to rural areas, and the organization of social welfare measures in the city slums on a regional basis with the cooperation of social welfare agencies in the region.

Shri R. S. Misra was a member of the General Council and Executive Committee of the Seva Samiti and was Secretary of its Ayurvedic and Mela Departments. He was a member of its Finance Committee also.

Shri S. S. Misra continued to be the President of the State Nashanivaran Parishad which conducted seminars almost once every month to focus public attention on the evils of the drink habit. In addition to this, posters and pamphlets were published in Oriya under the auspices of the Parishad to popularise the programme of prohibition in the State. He also arranged for the representation of the State Nashanivaran Parishad in the different All-India Conferences held to popularise the programme of prohibition.

Shri S. S. Misra continued to be in charge of the Gokhale Children's Home at Narsannapet in Srikakulam District. The Home which is being maintained since 1945 to take care of the orphaned children of the locality has completed another year of useful existence. There are now 55 inmates in the Home, of whom six are studying in Class XII, three in class XI, two in class X, five in class IX,

ten in class VIII, and the rest in the lower classes of the local High School. The annual expenses of the Home amount to Rs. 20,000. The Home is situated on a plot of land measuring three acres where there are opportunities of gardening for the children. It is also a matter of gratification that many old inmates of the Home have been suitably employed. The Society receives grants-in-aid from the Andhra Pradesh Government. and the Central Social Welfare Board towards the maintenance of the Home.

Dr. Kakade was elected chairman of the Managing Committee of the District Probation and Aftercare Association for a third term. The Association runs two remand homes, a child guidance clinic, four juvenile guidance centres and a fit person institute at Kivale for committed children. The question of grants for the remand homes engaged his attention during the year.

He continued to be Hon. Secretary of the Society for the Welfare of the Physically Handicapped in Wanawadi. The Society runs a Home for orthopaedically handicapped children between 6 and 18 years of age. There were 64 boys in the Home who were provided lodging and board, medical and surgical treatment, educational and vocational training facilities, and prosthetic aids free of charge. The Home receives grants from the State Government and the Central Social Welfare Board.

He was re-elected to the Managing Committee of the Maharashtra State Probation and Aftercare Association.

Dr. Kakade continued to be one of the Hon. Treasurers of the Mahila Seva Mandal. The Mandal runs a rescue home for women and children in moral danger, a toddlers' section and an industrial section. For providing employment to women and girls in the home a production-cum-training centre is run on the premises of the Mandal, which manufactures loud-speakers and other allied equipments.

He continued to work as Hon. Treasurer of the Navjeevan Mandal which works for the welfare of released prisoners. He was re-elected as Hon. Treasurer of the Coordinating Council of Social Service Agencies in Poona.

Shri Ajgaonkar was re-elected Secretary of the Social Service League, Bombay. He was a member of the Gymnasium

Committee, the Florence Nightingale Village Sanitation Fund Committee and the Finance Committee of the Social Service League. He continued to be the editor of the *Social Service Quarterly*.

He continued to be a member of the Rescue Committee and the Health Committee of the Association for Moral and Social Hygiene, Maharashtra State Branch.

### Medical Relief

Shri R. S. Misra was in charge of five dispensaries at Konhda and Suraicha in the Allahabad district and Khantara, Banaki and Khurhia in the Mirzapur district. The total number of patients treated in those dispensaries was about 16,000. The Suraicha dispensary has been started only recently and is open on Tuesdays and Fridays. The total expenditure on medical relief was about Rs. 9,400.

The Kanara Welfare Trust conducts two dispensaries, one at Bankikodla and the other at Shirali. A Maternity Home is being added at Bankikodla. Both the Dispensaries were in charge of qualified doctors. The number of patients registered during the year at the Bankikodla Dispensary was 1,147. The number registered at the Shirali Dispensary was 1,525. Both the Dispensaries were well-stocked with allopathic medicines. The Trust also conducts a maternity clinic at Ankola.

Shri Venkataraman continued to manage the T. N. Charities Ayurvedic Dispensary at Chetput, on behalf of the Thatikonda Nancharamma Charities. The total number of patients treated during the year was 6,056 including 3,973 children, 1,821 women and 262 men.

Shri S. S. Misra supervised the activities of the leprosy clinic at Chowdwar in Orissa. This clinic has put in 42 years of useful service. Every Sunday the patients are given both Sulphone and other vitamin tablets. They are also supplied with mid-day tiffin out of the grant made by the Social Welfare Board for the purpose. 2,880 patients suffering from leprosy were treated during the year. There are 30 students in the L. P. School attached to the clinic, who attended classes both in the morning and in the evening. The annual expenses of the institution amount to Rs. 5,336, of which

Rs. 300 is received from the Government of Orissa and Rs. 1,000 from the Social Welfare Board.

The Rural Centre at Shendurjana conducted by Shri R. S. Gupte has a qualified doctor in charge of the dispensary and the maternity home which are run under its supervision. The maternity home conducted 106 maternity cases as against 84 during 1967-68. The number of cases conducted during 1968-69 is the highest for a year during the existence of the maternity home.

The doctor in charge of the dispensary is assisted by a compounder and a waterman, while on the maternity home side, the midwife looks after the routine work of the maternity home. She also attends to the delivery cases.

The dispensary, as in previous years, is used by the villagers as well as by outsiders. The doctor in charge of the dispensary and the maternity home has to conduct the dispensary both in the mornings and afternoons on Tuesdays, that being the weekly bazar day, when patients visit the dispensary in large number from the villages round about.

Shri Ajgaonkar was a member of the Bai Bachubai Kanji Karsandas Charitable Allopathic Dispensary Committee and the Ayurvedic Charitable Dispensary Committee of the Social Service League, Bombay.

### **Relief of Distress**

Owing to severe drought conditions both in the Mirzapur and in the Allahabad districts, the problem of relief called for urgent attention, but owing to the lack of resources it has not been possible to do much. Not only have the crops failed but even wells have dried up, causing scarcity of drinking water. The Servants of India Society has completed the rock-boring of a well at Konhdar which has improved the supply of water for drinking purposes. The rock-boring operations were started in February, 1968 with the help of a grant of Rs. 500 from the Florence Nightingale Village Sanitation Fund, Bombay. The rock-boring work was completed only in May, 1969 at a cost of Rs. 1,312.



The Trustees of the Florence Nightingale Village Sanitation Fund have given a fresh grant of Rs. 500 for the construction of a well in village Suraicha during the year 1968-69. The work has been taken in hand and is expected to be completed by the end of summer this year at an estimated cost of Rs. 2,000. Steps have also been taken to start de-silting of a village tank at Suraicha. This tank measures 17 bighas and is expected to contain enough water to irrigate the entire paddy crop of the village.

The huts of Harijans in the Thakkar Bapa Harijan Colony at Ankola were badly damaged by the heavy cyclone and floods in North Kanara District. It was necessary to construct pucca tiled houses instead of thatched huts. The Society contributed a sum of Rs. 5,000 for this work which would cost about Rs. 15,000.

In May 1968 Shri K. G. Sharangpani distributed, on behalf of the Servants of India Society, country blankets and lanterns in about ten villages in Sangameshwar Taluka of the Ratnagiri District which were affected by the Koyana Earthquake. Dr. Kakade helped Shri Sharangpani in organizing this relief.

### Other Activities

Shri Venkataraman represented the Servants of India Society at the All-India Moral and Social Hygiene Conference held in Bangalore and also attended a meeting of the magistrates and police officials of Madras, who deal with the enforcement of the provisions of the Suppression of Immoral Traffic Act. Women witnesses who accompanied the police during raids were not, it was pointed out, treated with the respect due to them by the defence counsels and therefore the Magistrates should see to it that defence counsels did not put disrespectful questions to them. The seminar suggested that prominent social workers should be invited to become members of an advisory committee in Madras city and in each district to advise the magistrates and the police. Shri Venkataraman who was invited to be a member of the Advisory Committee for Madras City has agreed to become its member.

Shri Desai continued as a Trustee and as Secretary of the Bijapur Reconstruction Trust. He was also the Vice-President of the Dadabhai Naoroji Memorial Association.

Dr. Kakade continued to be Hon. Secretary of the Poona Town Planning Study Group established by the Gokhale Institute of Politics and Economics. Meetings of the sub-committees of the Group were convened to discuss various aspects of town planning as and when necessary.

Dr. Kakade continued to be a member of the Economic Sub-committee of the Gandhi Centenary Committee for Maharashtra State. He continued to be one of the trustees of the Kanara Welfare Trust, Ankola and of the M. G. Ranade Trust as a representative of the Servants of India Society.

Dr. Kakade continues to be Hon. Secretary of the Maharashtra Central Famine Relief Committee and the Poona District Famine Relief Committee.

### **Printing Presses**

Shri Ambekar is in charge of the Aryabhushan Press, Poona; Shri Mani of the *Hitavada* at Nagpur and Bhopal; and Shri Ajgaonkar of the Bombay Vaibhav Press, Bombay.

# **GOKHALE INSTITUTE OF POLITICS AND ECONOMICS,**

## **POONA 4**

### **Annual Report for the year 1968-69**

In the Agro-Economic Research Centre for Western India located at the Institute by the Ministry of Food and Agriculture, Government of India, a report based on the case studies carried out in 1964-65 of families from the village Hagari-Bommanhalli (Bellary district, Mysore State) whose lands were submerged in Tungabhadra dam, was completed.

In the study relating to the High Yielding Varieties Programme (HYVP), the report on Mexican Wheat (Rabi 1967-68) in Bijapur district (Mysore State) was finalised, while the tabulation of data and writing of notes in respect of the reports on Paddy (Kharif 1968-69) in Bhandara district (Maharashtra State) and Maize, in Bangalore district (Mysore State) were in progress.

Tabulation and processing of data and drafting of report were in progress in respect of the following studies :—

- (1) Evaluation of Crop Loan System in Akola district (Maharashtra State)
- (2) Evaluation of Full Finance System in Nasik district (Maharashtra State)
- (3) Utilization of Loans for Land Development by the Land Development Banks.
- (4) Marketing of Arecanut in Mysore State.
- (5) Land Utilization and Cropping Pattern in Mysore State.
- (6) A survey of forest land distributed to landless labourers.

The tabulation of data collected during the year 1967-68 for the study into the Economics of Farm Management in Ahmednagar district (sponsored by the Directorate of Economics and Statistics, Ministry of Food and Agriculture, Government of India in 1967-68) was in progress.

In the Section in Demography, work was in progress on the following projects :—

- (1) Demographic Resurvey of six villages in Satara district :—

The tabulation of survey and resurvey data in respect of the households as units was completed. The idea in this project is to study the demographic change in the villages during 1954-66. An attempt is also made to examine the change in the levels of living in the villages.

The following topics are under study :—

- (a) Change in the Occupational Structure.
  - (b) Biases in age reporting in the two years of survey.
  - (c) Assessment of change in attitudes towards family planning during 1954-66.
- (2) Assessment of family planning activity in the City of Poona :—

The report on the project is ready, except for one chapter dealing with the assessment of loop programme in the city.

- (3) Follow-up study of loop cases in Poona district :—

The study is complete in respect of about 500 cases in the city of Poona. In the non-city area, about 2000 cases will be covered by the survey and investigational work is in progress.

In the Section in Applied Statistics, the book 'Two Studies in Education' incorporating the studies previously undertaken with respect to (i) Internal and external assessment of students and (ii) Unit institutional costs in higher education' was published. Another book "Progress of Education in Rural Maharashtra" is in the press. Mathematical and statistical models were developed for dealing with wastage and stagnation in education.

In the Rural Sociology Section, two research projects, one on tribal co-operative societies, and the other on modernization were in progress.

In the Centre of Advanced Study in Economics, located at the Institute by the U. G. C., studies on aspects of the economic history of Assam previously undertaken were nearly

completed. A new problem of study has been taken up : ' Constraints of Indian Entrepreneurship 1785-1857 '. Work is also in progress on ' The nature and extent of Feudalism, if any, in Medieval India '.

The study relating to ' The history of land system and legislation in Madras ', as well as a comparative review of five land reform studies sponsored by the R. P. C. ( Planning Commission ) were completed. A list of land laws in the fourteen former Deccan States as also a note on the origin, development and extent of legislative power of the various legislative authorities in India since 1600 were prepared. Work was in progress in respect of the study of the land system and legislation in the four southern states in India viz. Kerala, Madras, Andhra Pradesh and Mysore.

A comprehensive note on problems of dry farmers and small farmers with particular reference to Maharashtra was prepared for the Planning Commission.

A report on community costs of industrial location in Bombay and Nasik was prepared for the Maharashtra Industrial and Investment Corporation. A paper based on the findings of this report was presented to the Metropolitan Regional Planning Seminar held in Poona in October 1968.

A study of urban infra-structure of municipal towns in Maharashtra is in progress. It envisages an examination of the prevailing urban infra-structure and its relationship with factors like population, function of the towns, costs of municipal services, etc.

Another study undertaken was regarding the marketing of jowar in the regulated markets of Poona district. The study involves an examination of the procurement policy of the Government of Maharashtra since 1964-65 and its effects on market arrivals of Jowar in the Poona district. A preliminary note based on the findings of the study was submitted to the Planning Commission.

In the Forestry Economics Section, work was in progress on the following projects :—

- ( a ) Compendium on the Forests and Forestry in Maharashtra :—

The work of collation of information for three important parts viz. Forest Enumerations, Prices of Forest Products and Growth Rates was almost completed. Work on the subject of forest types was taken in hand.

- (b) Exploitation of forests through forest labourers' co-operative societies in Maharashtra.

The study emphasises the following aspects of the working of forest labourers' co-operative societies :—

- (1) Costs and returns of the working of Forest Coupes
- (2) Organisational structure and problems
- (3) Impact of the societies on the Tribal Community.

An enquiry into the working of a few societies and into details of participation of members selected by sampling was initiated and the data so collected is being processed.

In addition, the following topics have been taken up for examination :—

- (i) Research and training in the subject of forestry economics.
- (ii) Estimation of national income from forestry in the country.
- (iii) International trade in Indian forest products.
- (iv) Inter-industry relations of forest products and their derivatives.
- (v) Role of land-reforms in non-arable lands.

In the Section 'Structure of Indian Economy',

(a) the capital coefficient matrix ( $80 \times 80$ ) to  $32 \times 32$  capital coefficient table is being disaggregated in the 80 vectors classification. The work regarding calculation of gross value of these 80 vectors is completed.

(b) The  $241 \times 241$  input-output table was abridged into 80 vectors. The work on the estimation of some final demand vectors is completed.

The above two items together would help in building up a dynamic model for the economy.

(c) A survey of capacity utilisation in industry and the factors affecting it is completed for the year 1967-68.

(d) A study dealing with efficient plans for full utilization of capacity by identifying sectors in which additional capacities have to be created and assessing such additional capacities under different assumptions of foreign aid, has also been completed.

During the year the Planning Commission requested the Institute to prepare some notes on various issues raised in the document "Approach to the Fourth Plan" issued by it. Ten notes dealing with various aspects of planning were sent to the Commission. These dealt with size and financing of the plan, its statistical requirements, price policy, choosing industries for detailed planning, programming for full capacity utilization, problems of dry farming, planning for Indian forestry, self reliance and export policy, and an alternative approach to commodity planning.

In respect of Development Planning, the report of the survey of three talukas of Chanda district of Maharashtra State was finalised. A study in regard to the District Development Plan for Poona District has been undertaken. Preliminary studies in respect of metropolitan planning for Poona region have also been initiated.

In respect of the special project 'Export Potential of the Indian Leather and Leather Products Industry' which the Institute undertook in 1967-68, under the sponsorship of the U. S. Agency for International Development, the preliminary report of the first phase of the study was submitted last year. In the second phase, the Institute worked in collaboration with the Central Leather Research Institute, Madras. The final report is being prepared in two volumes; Volume II has been already completed while Volume I is expected to be ready by June 1969.

The Training Programme in Research Methodology for fellows of the Institute progressed satisfactorily. Apart from research methodology, special stress on mathematical economics, operation research and economic history was given this year. 15 members of the staff participated in this training activity. For the summer, a six week course in Mathematical Economics for teachers of various colleges in the country is planned. University Grants Commission has been kind enough to give a grant for this purpose.

Research fellows under various fellowship programmes, such as those of the ICAR, Indian Society of Agricultural Economics, and Ministry of Education, also worked at the Institute during the year.

One Senior Fellow was engaged on a study relating to 'Factor contests of India's foreign trade during 1921-22 to 1955-56 and Price Movements of Traded Commodities together with their Hicks-Leontief aggregation' and in preparing a dictionary showing correspondence between the traded commodities (numbering 4850) and commodities under different sectors  $241 \times 241$  Input-Output Table.

Another Senior Fellow completed work on the 'Pattern of Interregional Commodity Flows in India (1950-51 to 1959-60) and a Derivation of Optimum Flows'. He is at present working on the following projects :—

- (1) Capital Coefficient Matrix (1963)  $80 \times 80$  sectors.
- (2) Statewise Fuel Input (Flow) Coefficients.
- (3) Methods for solving interregional models of relatively larger size.

Under the new Ford Foundation grant (1967-71) for research on planning and development, which also provides for the training abroad of the technical staff of the participating institutions, Shri R. K. Koti was deputed in January 1969 for training at the Harvard Economic Project (Cambridge, Mass., U. S. A.) under Prof. W. Leontief and Dr. Anne P. Carter. He is expected to return at the end of 1969. It is proposed to depute another member of the staff, Shri P. Venkatramaiah, to Cambridge University (U. K.) in September 1969 to work under Prof. R. Stone for about 8 months, followed by visits to a few institutions in Europe for about 4 months. Shri S. W. Muranjan is being deputed to the School of Forestry, University of California, Berkeley, U. S. A for specialising in Forestry Economics.

Dr. A. Bopegamage who was deputed to the U. S. A. for advanced training in sociology at the Centre of Urban Studies



and Department of Sociology, University of Chicago, in 1966 and who subsequently worked for a year at the University of Saskatchewan, Canada, as Visiting Professor in Sociology ( 1967-68 ), returned to the Institute in August, 1968.

Prof. P. N. Mathur attended the Regional Meeting of Directors of Institutes of Training and Research Institutes in Asia held at Tokyo from the 10th to the 14th March 1969 at the invitation of the Organization for Economic Co-operation and Development ( OECD ), Paris. He conducted seminars at Osaka University and at the Institute of Developing Economies, Tokyo. He was also invited to write a critical introduction to the theoretical volume of the proceedings of the 4th International Conference on Input-Output techniques, held at Geneva in 1968.

Prof. V. M. Dandekar who is in charge of the research project "Export Potential of Leather and Leather Goods" undertaken at the instance of USAID, paid a visit to Bangkok, Malaysia, Singapore, Hongkong and Japan from the end of October to the 10th December, 1968, for a study of the Overseas Markets for leather foot-wear and other leather goods.

Prof. A. R. Kamat presided over the Statistics Section of the fifty-sixth Indian Science Congress held at Powai ( Bombay ) in January 1969. He was also invited to participate in and write a working paper for a UNESCO Regional Seminar in Delhi.

Dr. N. Rath worked as a member of the Committee appointed by the Government of Maharashtra for evaluation of various land reforms measures introduced in the State.

Shri G. S. Chandras participated in a seminar on Arid Zones at Jodhpur and another seminar on Land Use at Aligarh, organized in connection with the XXI International Geographical Congress held in India in 1968. He also participated in the Section on the Status of Forestry Statistics in India of the XXII Annual Conference of the Indian Society of Agricultural Statistics at Patna in November 1968.

Dr. M. V. Namjoshi was associated with the researchers of the Industrial Licensing Policy Enquiry Committee.

and prepared a detailed memorandum on Planning and Licensing.

The construction of additional staff quarters and some ancillary works at the hostel and staff quarters, at a cost of about Rs. 4.16 lakhs, made available from the Ford Foundation grant (1963-68), were completed during the year. The additional quarters will provide accommodation for 12 more members of the staff and also 2 guest rooms for occasional visitors to the Institute.

During the year under report, the following publications were brought out :—

- (1) Human Rights in a Multi-National Society, by D. R. Gadgil (Publication No. 53).
- (2) Co-operation — Principles and Substance, by D.G. Karve (Publication No. 54).
- (3) Two Studies in Education, by A. R. Kamat (Publication No. 55).
- (4) The Republican Constitution in the Struggle for Socialism, by E. M. S. Namboodiripad (Kale Memorial Lecture Series No. 31).
- (5) Study of the High Yielding Varieties Programme in a District in Maharashtra (Paddy 1966-67), by S. W. Muranjan (Mimeograph Series No. 4).
- (6) Study of the High Yielding Varieties Programme in a District in Mysore (Paddy—Rabi 1966-67), by A. R. Rajapurohit (Mimeograph Series No. 5).
- (7) The Indian Cotton Mills' Federation, by Bhagwan Prasad (Mimeograph Series No. 6).
- (8) Utilisation of Industrial Capacity in India, 1967-68, by R. K. Koti (Mimeograph Series No. 9).

The following research students who worked for their Ph.D. in Economics under the guidance of members of the staff of the

Institute were awarded the Ph.D. degree of the University of Poona during the year :—

- |                            |  |
|----------------------------|--|
| (1) Shri A. S. Nadkarni    | A study of Agricultural Income of Maharashtra, 1951-52 to 1958-59.                             |
| (2) Shri S. L. Shirodkar   | Co-operative Movement in Kolhapur District - A Study.  |
| (3) Shri G. R. Mulla       | Factors influencing the cropping pattern in individual holdings in the District of Jalgaon.    |
| (4) Shrimati M. Seetha     | Economics of Printing Industry in Madras.  |
| (5) Shri T. Prabhakaran    | Policies and Programmes of Cattle Development - A Case Study of a Development Block in Kerala. |
| (6) Shri M. D. Sathe       | Economic Study of a Region.  |
| (7) Shri A. R. Rajapurohit | Development of Cotton in Kumta-Dharwar Tract.  |

The following theses for Ph.D. degree in Economics were submitted during the period under report :—

- (1) A Review of the Public Finance of Madhya Pradesh (Old) Since 1921 - A. D. Suklikar.
- (2) An Approximate Determination of Indifference Surfaces from Family Budget Data in Different Regions of India - R. Radhakrishna.
- (3) Location Pattern and Interregional Commodity Flow - S. R. Hashim.
- (4) Electrical Machinery Industry - A Study on some micro-aspects, with special reference to the problem of capacity utilization - M. V. Kirloskar.

The Kale Memorial Lecture for 1969 was delivered by Professor J. J. Anjaria, Deputy Governor, Reserve Bank of India, on the 17th May 1969. The subject of his talk was "Strategy of Economic Development".

**Gokhale Institute of**  
*Balance Sheet as*

FUNDS AND LIABILITIES	Rs.	P.	Rs.	P.
<b>Publication Reserve :</b>				
Stock of Publications	47,417	32		
Advance Provision for Publications as per last Balance Sheet	31,273	88	78,691	20
<b>Reserve For Replacement of Tabulating Machinery :</b>				
As per last Balance Sheet	93,814	75		
Further Provision this year	15,000	00		
Add : Interest received or accrued on earmarked investments	32,792	74	1,41,607	49
<b>Reserve for Statistical Laboratory :</b>				
As per last Balance Sheet	35,000	00		
Add : Interest received or accrued on earmarked Investments	11,227	83	46,227	83
<b>Reserve for Staff Quarters and Hostel Repairs, Etc :</b>				
As per last Balance Sheet	—			
Add : Transferred from Income and Expenditure Account	1,921	41	1,921	41
<b>Reserve for Gratuity :</b>				
As per last Balance Sheet	7,723	13		
Add : Interest transferred from Income & Expenditure Account	334	21		
	8,057	34		
Less : Payments made during the year	3,466	66	4,590	68
<b>Liabilities :—</b>				
For Expenses	83,767	86		
Due to R. B. R. R. Kale Trust	48,441	96		
Mess Deposits	1,200	00		
Electricity Deposits	425	00		
Sundry Credit Balances and Advance Receipts	9,503	50		
Retention Money and Tender Deposits	17,914	85		
Provision for Charges for the Use of Computer	32,828	01		
Provision for Contingencies	5,000	00	1,99,081	18
Total carried forward	..		4,72,119	79

# Politics and Economics, Poona 4

at 31st March 1969

ASSETS	Rs.	P.	Rs.	P.
<b>Freehold Land : ( At cost )</b>				
As per last Balance Sheet	1,16,525	99		
Development expenses during the year	1,768	50	1,18,294	49
<b>Rights in Leasehold Land : ( At cost )</b>				
As per last Balance Sheet			51,896	25
<b>Buildings : ( At cost )</b>				
As per last Balance Sheet	10,90,853	54		
Add : Expenditure on the Construc- tion of Quarters for research staff	3,25,735	75		
Further Expenditure on the construction of Students' and Trainees' Hostel	7,932	35		
	14,24,521	64		
<b>Less : Provision for Depreciation</b>				
made upto last year 1,00,720				
made this year 21,820	1,22,540	00	13,01,981	64
<b>Tabulating Machines :</b>				
At cost ( including installation expenses ) as per last Balance Sheet	90,621	90		
<b>Less : Provision for Depreciation</b>				
made upto last year 84,318 03				
made this year 800 00	85,118	03	5,503	87
<b>Furniture, Deadstock and Equipment :</b>				
At cost as per last Balance Sheet	1,96,718	34		
Additions during the year : ( inclusive of additions out of Grant for furniture etc. for the Centre of Advanced Study in Economics Rs. 8,509.30 )	13,401	59		
	2,10,119	93		
<b>Less : Provision for Depreciation</b>				
made upto last year 77,500				
made this year 10,000	87,500	00	1,22,619	93
<b>Investments : ( At cost )</b>				
Earmarked Investments for Replacement of Tabulating Machines and Equipment 12 years' National Savings Certificates ( Face Value )	12,400	00		
Add : Interest accrued	5,952	00	18,352	00
<b>Total carried forward</b>			16,00,296	18

**Gokhale Institute of**  
*Balance Sheet as*

FUNDS AND LIABILITIES	Rs.	P.	Rs.	P.
Total brought forward			4,72,119	79
<b>Building and Equipment Grant :</b>				
As per last Balance Sheet	14,21,519	95		
<i>Add :</i> From the Ford Foundation towards the cost of Construc- tion of Quarters for Research Staff, Hostel Furniture and other works	3,36,450	00		
From the University Grants Commission for Equipment for the Centre of Advanced Study in Economics	8,509	30	17,66,479	25
<b>Advance Grants :</b>				
Ministry of Food and Agriculture, Government of India, for				
( i ) Agro-Economic Research Unit, Plan Expenditure	5,557	89		
( ii ) Form Management Study in Ahmednagar District	12,953	59		
Ministry of Health, Family Planning, Government of India, for Communication Research Project	7,204	00		
University Grants Commission for Centre of Advanced Study in Economics—Non Recurring Grant	1,053	88		
<b>Ford Foundation :</b>				
( i ) Works at Staff Quarters	21,125	74		
( ii ) Foreign Training Fellowships and Purchase of Books and Equipment	16,041	09	63,936	19
<b>The Rockefeller Foundation</b>				
<b>Stabilization Grant :</b>				
Balance as per last Balance Sheet	9,02,598	29		
<i>Add :</i> Interest received during the year	62,483	90		
	9,65,082	19		
<i>Less :</i> Transferred to Income and Expenditure Account	42,603	34	9,22,478	85
Total carried forward			32,25,014	08

**Politics and Economics, Poona 4***at 31st March 1969*

ASSETS	Rs.	P.	Rs.	P.
Total brought forward			16,00,296	18
Fixed Deposit with the Bank of Maharashtra Ltd., Poona 4	80,000	00		
	98,352	00		
For Statistical Laboratory :				
Fixed Deposit with the Bank of Maharashtra Ltd., Poona 4	36,000	00	1,34,352	00
Other Investments :				
Fixed Deposit with the Bank of Maharashtra Ltd., Poona 4	*11,29,000	00		
*Lodged for arrangement of Cash Credit with the Bank 5,00,000				
Lodged on a guarantee money towards purchase of a plot 6,000				
Equity Shares of Poona University Fed. Coop. Consumers' Stores Ltd.	1,000	00	11,30,000	00
Publications :				
Stock on hand; At cost	47,417	32		
Stock of paper on hand ; At cost	14,109	37	61,526	69
Deposits :				
With the Maharashtra State Electri- city Board for Electric Connection	2,925	00		
With the Superintendent, Govt. Milk Supply Scheme, Poona	4,992	00		
With the Divisional Engineer, Telephones, Poona	240	00	8,157	00
Advances :				
For Purchases	18,351	70		
For Expenses	4,274	52		
To the Institute of International Education, New York	16,041	09		
To Employees	18,474	17	57,141	48
Total carried forward ...			29,91,473	35

**Gokhale Institute of**  
*Balance Sheet as*

FUNDS AND LIABILITIES	Rs.	P.	Rs.	P.
Total brought forward			32,25,014	08

**Note :** The expenditure incurred through the Institute of International Education, New York, out of the Dollar grant received before the 6th June 1966 and the Unesco Book Coupons in Dollars acquired before the 6th June, 1966 have been converted into rupees at the predevaluation rate of exchange.

Grand Total : 32,25,014 08

Examined and Found Correct  
Sd. M. P. Chitale & Co.  
Chartered Accountants

Sd. P. N. Mathur  
Director  
Gokhale Institute of Politics  
and Economics, Poona 4.



**Politics and Economics, Poona 4**  
*at 31st March 1969*

ASSETS	Rs.	P.	Rs.	P.
Total brought forward			29,91,473	35
<b>Amounts Receivable :</b>				
( Unsecured, Considered good )				
<b>For Capital Expenditure :</b>				
University Grants Commission for Expenditure on the Construction of Hostel, Fittings, etc.	3,979	98		
<b>For Expenditure on Research Work :</b>				
The Ministry of Food & Agriculture, Govt. of India, for Agro-Economic Research Unit, Non-Plan Expenditure	6,259	59		
The Ministry of Health, Govt. of India, for Demography Section	33,115	48		
The University Grants Commission for				
( i ) Centre of Advanced Study in Economics—Recurring Grant	9,510	70		
( ii ) Forestry Economics Section	13,343	51		
( iii ) Special Grant for Books	500	06		
( iv ) Revision of Salary Scales of Library Staff	240	00		
The Planning Commission, Government of India for				
( i ) Research in Planning and Development	815	80		
( ii ) Study in exploitation of forests	1,795	43		
The Government of Maharashtra for				
( i ) Four Research Sections	20,559	66		
( ii ) III Plan Section	7,950	75		
Others :	44,372	73	1,42,443	69
<b>Cash and Bank Balances :</b>				
Cash in hand	—			
Postage Stamps in Hand	—			
Cheques on Hand	30,111	02	30,111	02
<b>In Current Account with Banks :</b>				
With the United Commercial Bank Ltd., Poona 2	1,635	37		
With the Central Bank of India Ltd., Poona 4	2,918	98		
With the Bank of Maharashtra Ltd., Poona 4	56,431	67	60,986	02
<b>Grand Total</b>			<b>32,25,014</b>	<b>08</b>

**Gokhale Institute of**  
**Income and Expenditure Account**

EXPENDITURE	Rs.	P.	Rs.	P.
<b>General Section</b>				
Research—Salaries and Allowances and Investigational Expenses			55,268	54
Training Abroad Expenses			3,356	35
Library—Schedule 'A'			63,587	00
Publication Section			55,230	09
Establishment Expenses—Schedule 'B'			55,969	44
Contribution to				
Employees' Provident Fund	48,562	26		
Less ; Charged to Research Works etc.	44,770	12	3,792	14
Depreciation on Building & Furniture			21,020	00
Furniture & Office Equipment : Cost			6,104	30
<b>Tabulating Section :</b>				
Schedule 'C'	2,02,537	31		
Less ; Charged to various projects	1,22,865	46	79,671	85
<b>Demography Section :</b>				
Schedule 'D'			93,103	96
<b>Planning and Development Section :</b>				
Schedule 'E'			86,657	98
<b>Forestry Economics Section :</b>				
Schedule 'F'			96,687	03
<b>Sir Dorabjee Tata Section In</b>				
<b>Agricultural Economics :</b>				
Agro-Economic Research Unit—Schedule 'G'				
Non-Plan Expenditure	2,71,022	95		
Plan Expenditure	34,988	08	3,06,011	03
<b>U. G. C. Centre of Advanced Study</b>				
<b>In Economics</b>				
Recurring Expenditure—Schedule 'H'			1,82,599	70
Non-Recurring Expenditure				
Books and Journals			5,719	53
<b>Government of Maharashtra :</b>				
<b>Four Research Sections :</b>				
Schedule 'I'				
(i) Development Planning	26,341	34		
(ii) Applied Statistics	63,318	18		
(iii) Urban Economics	35,257	77		
(iv) Rural Sociology	30,268	98		
Expenditure on Office Establishment	16,072	00	1,71,258	27
<b>Total carried forward</b>			12,86,037	21

**Politics and Economics, Poona 4**  
*for the year ended 31st March, 1969*

INCOME		Rs.	P.	Rs.	P.
<b>Grants : Receipts and Appropriations :</b>					
From the Government of Maharashtra :					
Grant-in-Aid		15,000	00		
From the University of Poona		2,000	00		
From the Government of Maharashtra for the revision of salary scales of teachers for the years					
1962-63	Rs. 470	00			
1963-64	Rs. 135	00			
1964-65	Rs. 18	00	623	00	
From the University Grants Commission (through University of Poona) :					
Special Grant for Books		2,000	06	19,623	06
<b>Grants for Research Work :</b>					
From the Ford Foundation : For Social Science Research & Training Programme					
		1,66,809	60		
From the Planning Commission :					
( i ) For Research in Planning and Development		1,08,806	07		
( ii ) For the study in exploitation of Forests		26,195	43		
From the Ministry of Health, Govt. of India : For Demography Section					
		93,103	96		
From the Ministry of Food and Agriculture, Govt. of India, for					
( i ) Agro-Economic Research Unit :					
For Non-Plan Expenditure		2,71,022	95		
For Plan Expenditure		34,988	08		
( ii ) Farm Management Study in Ahmednagar District		58,057	77		
From the University Grants Commission (through University of Poona) for :					
( i ) Centre of Advanced Study in Economics		1,88,319	23		
( ii ) Forestry Economics Section		48,343	51		
From the Government of Maharashtra :					
for ( i ) Four Research Sections		1,71,258	27		
( ii ) III Plan Section		50,048	90		
From Others		96,000	00	13,12,953	77
Total carried forward ..				13,32,576	83

**Gokhale Institute of**  
*Income and Expenditure Account*

EXPENDITURE	Rs.	P.	Rs	P.
Total brought forward			12,86,037	21
<b>Government of Maharashtra :</b>				
<b>III Plan Section</b>				
Schedule ' J '			50,048	90
<b>Farm Management Study in Ahmednagar District :</b>				
Schedule ' K '			58,057	77
<b>Transferred to R. B. R. R. Kale Trust :</b>				
(i) Receipts for Overhead Charges	3,441	96		
(ii) Grants for Research work	45,000	00	48,441	96

**Grand Total**

14,42,585 84

**Politics and Economics, Poona 4**  
*for the year ended 31st March 1969*

INCOME		Rs.	P.	Rs.	P.
Total brought forward				13,32,576	83
<b>Receipts :</b>					
For Tabulation and Statistical Services		19,953	15		
For Overhead Charges		3,441	96		
Contribution from the University of Poona		3,553	89		
Sale of Publications		12,741	23		
Miscellaneous & Other Receipts		3,404	89		
From R. B. R. R. Kale Trust		15,000	00	58,095	12
<b>Interest Received :</b>					
On Fixed Deposits (inclusive of Rs. 42,603-34 transferred from Rockefeller Foundation Stabilization Grant)		50,845	09		
Less : Transferred to Reserve for Gratuity		334	21		
		50,510	88		
On Employees' Advances		1,368	01	51,878	89
Dividend Received				35	00
<b>Staff Quarters &amp; Hostel Account :</b>					
Rent and Other Receipts		35,725	22		
Less : Maintenance	23,003	81			
Provision for Depreciation	10,800	00	33,803	81	
			1,921	41	
Transferred to Reserve for Staff Quarters & Hostel Repairs etc.		1,921	41		
				14,42,585	84

Examined and Found Correct  
 Sd/- M. P. Chitale & Co.,  
 Chartered Accountants

Sd/- P. N. Mathur  
 Director,  
 Gokhale Institute of  
 Politics & Economics,  
 Poona 4.

9th June, 1969.

# Gokhale Institute of Politics and Economics, Poona 4

*Schedules forming part of Income and Expenditure*

*Account for the year ending 31st March 1969*

## SCHEDULE 'A'

<b>Library</b>		
Books and Periodicals	26,582	53
Establishment	26,109	21
Bookbinding charges	4,036	75
Printing, Stationery & Contingencies	6,368	66
Furniture and Office Equipment	489	85
	<hr/>	
	63,587	00

## SCHEDULE 'B'

<b>Establishment Expenses</b>		
Salaries of Office Staff	20,407	79
Postage and Telephones	12,954	60
Printing and Stationery	1,689	88
Travelling and Conveyance	3,023	11
Building and Garden Repairs and Maintenance	6,690	81
Rent, Taxes and Insurance	2,305	77
Electricity Charges	1,285	09
Miscellaneous Expenses	6,032	39
Audit Fees	2,000	00
Less : Charged to Research works	500	00
	<hr/>	
Interest on Bank Overdraft		80 00
		<hr/>
		55,969 44

## SCHEDULE 'C'

<b>Tabulating Section</b>		
Salaries and Allowances including		
Piecework payments	1,10,489	72
Printing Stationery and Miscellaneous	5,113	74
Machinery Maintenance	11,305	84
Depreciation on Tabulating Machines	800	00
Tabulation Equipment	42,000	00
Computer Maintenance	17,828	01
Provision for replacement of Tabulating Machinery	15,000	00
	<hr/>	
	2,02,537	31

## SCHEDULE 'D'

## Demography Section

## Salaries and Allowances :

Reader	14,865	00	
Lecturer	8,805	60	
Research Assistants	12,679	69	
Investigators	8,875	20	
Office Establishment	13,657	68	
Library Assistants	4,597	44	63,480 61

Provident Fund Contribution			3,439 20
Tabulation Expenses and Statistical Services			13,253 26
Printing, Stationery and Contingencies			3,515 44
Investigational Expenses			1,433 10
Books and Periodicals			7,982 35
			<u>93,103 96</u>

## SCHEDULE 'E'

## Planning and Development Section

## Salaries and Allowances :

Lecturer	19,685	01	
Research Assistants	4,719	00	
Senior Fellowships	4,471	50	
Office Establishment	12,632	28	41,507 79

Provident Fund Contribution			2,511 79
Printing, Stationery and Contingencies			6,198 97
Investigational Expenses			6,003 90
Tabulation Expenses and Statistical Services			20,923 14
Books and Periodicals			9,512 39
			<u>86,657 98</u>

## SCHEDULE 'F'

## Forestry Economics Section

## Salaries and Allowances :

Staff on Deputation	38,091	12	
Lecturers	12,141	96	
Research Assistants	6,218	52	
Investigators	897	00	
Technical Staff	10,733	06	68,081 66

Provident Fund Contribution			1,259 47
Printing, Stationery & Contingencies			3,026 60
Investigational Expenses			6,397 91
Tabulation Expenses and Statistical Services			17,921 39
			<u>96,687 03</u>

## SCHEDULE 'G'

**Agro-Economic Research Unit****Non-Plan Expenditure****Salaries and Allowances :**

Readers	14,190	00		
Lecturers	80,578	37		
Research Assistants	40,401	43		
Field Inspectors	4,527	00		
Field Investigators	17,652	51		
Office Establishment	24,958	45		
Library Establishment	9,840	00	1,92,147	76

Provident Fund Contribution			12,443	77
Investigational Expenses			20,876	88
Tabulation Expenses and Statistical Services			33,362	60
Printing, Stationery and Contingencies			7,196	31
Books and Periodicals			4,995	63
			<u>2,71,022</u>	<u>95</u>

**Plan Expenditure****Salaries and Allowances :**

Lecturer	8,795	82		
Research Assistants	8,947	90		
Office Establishment	9,217	85		
Library Establishment	6,946	20		
			33,907	77
Provident Fund Contribution			1,080	31

34,988 08

## SCHEDULE 'H'

**U. G. C. Centre of Advanced Study in Economics****Expenditure from recurring grant :****Salaries and Allowances :**

Professor	18,260	00		
Readers	31,440	00		
Lecturers	30,208	80		
Research Fellowships	30,058	71		
Visiting Professors	284	27		
M. A. & Ph. D. Scholarships	16,756	07		
			1,27,007	85
Technical Staff			15,400	20
Books and Journals			9,865	09
Travel			1,439	44
Other Expenditure			28,887	12

1,82,599 70



## SCHEDULE 'I'

## Government of Maharashtra : Four Research Sections

## 1. Development Planning

## Salaries and Allowances :

Professor	11,800	00
Research Assistants	8,370	00

20,170 00

## Provident Fund Contribution

1,500 00

## Books and Periodicals

1,500 72

## Tabulation Expenses and Statistical Services

2,283 25

## Contingencies

887 37

---

26,341 34

## 2. Applied Statistics

## Salaries and Allowances :

Professor	17,700	00
Lecturers	12,910	95
Research Assistants	8,893	50

39,504 45

## Provident Fund Contribution

3,045 03

## Books and Periodicals

1,502 57

## Tabulation Expenses &amp; Statistical Services

3,802 31

## Contingencies

2,191 44

## Publications

13,272 38

---

63,318 18

## 3. Urban Economics

## Salaries and Allowances :

Lecturers	13,165	09
Research Assistants	7,913	30

21,078 39

## Provident Fund Contribution

1,108 50

## Books and Periodicals

1,500 65

## Tabulation Expenses and Statistical Services

6,550 08

## Contingencies

1,549 18

## Publications

3,470 97

---

35,257 77

## 4. Rural Sociology

## Salaries and Allowances :

Reader	10,642	50
Lecturer	7,704	64
Research Assistants	3,811	50

---

22,158 64

Provident Fund Contribution	1,729	21
Books and Periodicals	1,500	91
Tabulation Expenses & Statistical Services	3,634	20
Contingencies	1,245	88

---

30,268 98

---

**Expenditure on Office Establishment**

Salaries and Allowances	15,233	20
Provident Fund Contribution	838	80

---

16,072 00

---

**SCHEDULE 'J'**

**Government of Maharashtra III Plan Section**

Salaries and Allowances :

Professor	17,830	10
Reader	11,394	00
Lecturers	18,196	80
	<hr/>	47,420 90
Provident Fund Contribution		2,628 00

---

50,048 90

---

**SCHEDULE 'K'**

**Farm Management Study in Ahmednagar District**

Salaries and Allowances :

Research Officer	7,089	00
Senior Research Investigator	9,084	00
Agricultural Supervisors	3,117	00
Fieldmen	5,999	99
Office Establishment	13,296	84

---

38,586 83

Tabulation Expenses and Statistical Services 14,658 78

Investigational Expenses 2,496 66

Printing, Stationery and Contingencies 536 20

Provident Fund Contribution 1,779 30

---

58,057 77

---

Signatures to Schedules 'A' to 'K'

Sd/- M. P. Chitale & Co.  
Chartered Accountants

Sd/- P. N. Mathur  
Director,  
Gokhale Institute of  
Politics & Economics,  
Poona 4.

**List of Donations, 1968-69.**  
**Head-Quarters**

	Rs. Ps.
The M. S. Patkar Trust	3,281-51
Mr. F. X. Mascarenhas ( France )	1,000-00
Shri. P. C. Jain	100-00
The late R. B. R. R. Kale Dharmadaya Trust	100-00
The late Justice M. G. Ranade charities	100-00
Mrs. Chhaganlal Parekh ( Calcutta )	51-00
Shri Chhaganlal Parekh ( Culcutta )	50-00
Sums below 25	25-00
Total	4,707-51

**Bombay Branch**

The Scindia Steam Navigation Co., Ltd.	500-00
A Sympathiser	60-00
Shri G. A. Kamtekar	25-00
Shri J. M. Shapoorjee	21-00
Messrs. Kirloskar Electric Co., Ltd,	5,000-00
The Simon Sylvester Miranda Charitable Trust	251-00
The New India Assurance Co., Ltd.	2,500-00
All India Occupational Therapist Association	24-00
A Sympathiser	60-00
The Central Bank of India, Ltd.	10,000-00
The Hirabai C. Jehangir Charitable Trust	1,000-00
Messrs. Hindustan Lever, Ltd.	1,000-00
The Bank of Baroda, Ltd.	2,500-00
The Sir Ratan Tata Trust	2,000-00
The Godrej Trust	500-00
Total Rs.	25,441-00

These donations of Rs. 25441 have been passed on to the Kanara Welfare Trust towards help for schools and rural welfare work conducted by the Kanara Welfare Trust.

**U. P. Branch**

Donations below Rs. 25	10-00
------------------------	-------

**Orissa Centre**

	Rs.	Ps.
The Sir Dorabji Tata Trust, Bombay	1,000	00
( Earmarked for Tribal Welfare )		
Messrs. S. C. Sahu Malgodown	101	00
Shri Khatau Sundardas, Cuttack	100	00
Shri Basudev Modi,	100	00
Rani Saheba of Darpan, Cuttack	100	00
Shri Jahurimal Gajanand, Cuttack	100	00
—Do—		
( Help for supplying artificial limb of one patient )	25	00
Messrs. Patnaik & Co., Cuttack	100	00
	<hr/>	<hr/>
Total Rs.	1,626	00

**Thakkar Bapa Ashram, Rayagada**

Shri Ch. Seetaram Swamy	2,500	20
Shri Y. Y. C. Gandrayana	2,295	00
Shri Kantilal Thakkar	756	00
Shri R. K. Nanda	100	00
Shri Ch. Seetaram Swamy	50	00
Shri M. Kameya	20	00
Shri Nuka Jakaka	20	00
Shri Soura Senapati	15	00
Shri Anadi Saraka	10	00
Shri Brundaban Maudingi	10	00
Shri R. M. Sarama	10	00
Shri Biraya Bhandar	10	00
Shri J. H. Ali Mahada	10	00
Shri K. N. Thakkar	10	00
Shri Jeypore Sugar Company	10	00
Donations received below Rs. 10	425	45

---

Total Rs. 6,251.45

---

### Gokhale Children's Home, Narsannapet

1. Shri Varanasi Chinna Satyanarayana, Avilingi, Budithi	Rs. Ps. 25-00
2. Shri Dhana Reddi, Visakhapatnam	58-00
3. Bhajana Samgham, Kakinada	24-00
4. Below Rs. 10 ( 3 gentlemen )	16-00
5. Gokhale Seva Samaj in the form of rice 21 bags and 25 kgs. priced at	1,972-00

Total Rs. 2,095-00

#### 6. By Development Committee ( G. C. Home )

1. Shri K. S, Dutt, Visakhapatnam	1,000-00
2. Shri N. Raja Rao ( landlord, Mobagam )	500-00
3. Shri C. K. Rao, Agent, Andhra Bank Shrikakulam	116-00
4. Shri N. Somi Naidu, Ambalam	116-00
5. By small collections	320-00
6. By Miscellaneous collection	303-68

Total 2,355-68

Grand Total Rs. 4,450-68

### Shendurjana Centre

Sums below Rs. 25 50-00

Total Rs. 50-00

### Madras Centre

1. T. N. Charities	2,069-14
2. B. & C. Mills, Madras	341-62
3. Aryamatha Sabha	300-00
4. Smt. Anusyabhai	25-00

Total Rs. 2,785-76

**Devadhar Schools**

1. Local Donations collected by the Head-	Rs. Ps.
Master, Devadhar P. School ( in kind Rs. 545 )	
( in cash Rs. 165 )	710·00
2. Local Donations collected by the Head-	
Master D. A. C. P. School, Pulliyil ( in kind )	151·50
<b>Total Rs.</b>	<b>861·50</b>

**A. W. W. Mirzapur**

Shri Ram Sundar Verma	100·00
Social Service League, Bombay	
( Florence Nightingale Village Sanitation Fund )	500·00
Ramanuj Junior High School, Konhdar	903·12
Raja Baldeo Das Birla Songhati Vidyalaya, Salkhan	271·00
Junior High School, Muirpur	1,564·09
Junior High School, Siltham	834·00
Khantara Dispensary	542·38
Konhdar Dispensary	397·60
Banki Dispensary	137·00
Boys Primary School, Bhabhaich	450·00
Boys Primary School, Raja Sarai	150·00
Boys Primary School, Kusumba	150·00
Boys Primary School, Kirwani	150·00
Boys Primary School, Samakhud	150·00
Boys Primary School, Kundadih	150·00
Boys Primary School, Baijnath	50·00
Boys Primary School, Lerua	300·00
Boys Primary School, Bhaluhi	150·00
Khuriya Dispensary	275·00
Women's Welfare Centre, Sarsa	275·00
Women's Welfare Centre, Delauha	275·00
Women's Welfare Centre, Vijaipur	263·50
Women's Welfare Centre, Bharatganj	275·00
Women's Welfare Centre, Duddhi	275·00
Girls Primary School, Mamoli	210·00
Girls Primary School, Shahpur Khurd	300·00
Girls Primary School, Kundadih	150·00
Girls Primary School, Parani	150·00
Girls Primary School, Suraicha	15·00

**Total Rs. 9,412·69**

**Financial Statements of  
The Servants of India Society**

**THE SERVANTS OF**  
*Income and Expenditure Account*

EXPENDITURE	Rs.	P.	Rs.	P.
<b>To Expenses in respect of Properties :</b>				
Rates and Taxes and Cesses	10,221	86		
Repairs & Maintenance	17,617	26		
Property Insurance	489	25		
Garden Expenses	11,460	35		
Lease Rents	322	64		
			40,111	36
<b>To Establishment expenses</b>				
Members Expenses	35,919	79		
Staff expense's	45,734	29	81,654	08
„ Legal Expenses			60	00
„ Audit Fees			1,700	00
„ Contribution & Fees			5,715	96
„ Bad Debts written off			113	00
„ Miscellaneous Expenses (As per List F)			49,413	50
„ Depreciation ( On Dead Stock )			2,142	00
„ Amounts transferred to Reserve or Specific Funds ( as per list G )			12,285	00
„ <b>Expenditure on objects of the Trust</b>				
(a) Rural Uplift work ( Welfare Work, Education, Distress Relief, Medical )	1,64,757	17		
(b) Library				
S. I. S. Poona Library	19,676	51		
Gokhale Memorial Library, Nagpur	3,205	24	22,881	75
(c) Gokhale Day	1,157	16	1,88,796	08
<b>Total</b>	..		3,81,990	98



## INDIA SOCIETY

for the year ending 31st March, 1969

INCOME		Rs.	P.	Rs.	P.
By Rent Realised				30,674	50
„ Interest Realised					
(a) On Securities		22,017	08		
(b) On Bank Accounts		177	63		
(c) On Loans :					
(i) A. B. Press Capital	67,971	46			
(ii) B. V. Press Capital	18,466	20			
(iii) Hitavada Press Capital	51,260	00	1,37,697	66	1,59,892 37
„ Dividends				86	30
„ Donations ( In Cash or in Kind )					
From Members		6,204	06		
From Others		50,145	91	56,349	97
„ Press Profits					
A. B. Press	47,235	43			
B. V. Press	51,105	22			
	98,340	65			
Hitavada Press Bhopal	11,988	90			
Nagpur ( Deficit )	55,930	17	43,941	27	
			54,399	38	
Add. : Provision for Bonus of the last year	13,906	51			
	68,305	89			
Less : Bonus paid during the year	18,687	68		49,618	21
„ Income from Other Sources					
Profit on sale of Securities		352	50		
Miscellaneous Receipt		24,258	39	24,610	89
„ Transfer from Reserve ( List G )				10,600	00
„ Deficit carried over to Trust Fund and Corpus				50,158	74
			Total	3,81,990	98

As per our separate report of even date  
**A. H. JOSHI & CO.**  
*Chartered Accountants*

14th August 1969

## THE SERVANTS OF

*Balance Sheet as at*

FUNDS AND LIABILITIES		Rs.	P.	Rs.	P.
<b>Trust Fund and Corpus</b>					
The Society's General Fund					
Balance as per last B/Sheet		26,15,195	56		
Less : Deficit from Income & Expenditure account.		50,158	74	25,65,036	82
<b>Earmarked Funds :</b>					
Trust Funds ( As per list A )		3,53,803	22		
Funds set aside out of its Income or resources by the Society ( As per list B )		8,38,332	28	11,92,135	50
<b>Loans :</b>					
Overdraft and Cash credit Accounts at Nagpur ( Overdraft secured against deposit of 3 G. P. Notes of the Face value of Rs. 1,00,000 for Hitavada Press at Nagpur and Bhopal)					
				1,87,068	82
<b>Liabilities :</b>					
(a) Papers and Presses Liabilities		7,11,874	13		
(b) Advances payable :					
1. Expenses	43,885	75			
2. Advances	62,404	00			
3. Rent and Order Deposits	20,879	52			
4. Sundry Creditors	77,952	49	2,05,121	76	9,16,995 89
Total			..	48,61,237	03

## INDIA SOCIETY

31st March, 1969

ASSETS	Rs.	P.	Rs.	P.
<b>Building and site : ( As per list C )</b>				
Balance as per last B/Sheet	12,98,092	82		
Add : Additions during the year	3,900	00	13,01,992	82
<b>Investments ( At cost ) ( As per list D )</b>				
In Government Securities	5,88,737	77		
In Shares and Debentures	10,963	25	5,99,701	02
<b>Papers and Presses Assets</b>				
Machinery, Furniture, Type & Dead Stock	7,65,238	19		
Stores, stock and incomplete works	2,90,809	43		
Book Debts	11,91,209	59		
Advances and Deposits	89,418	34		
Copy right	1	00		
Investments	5,050	00		
Vehicles	21,100	65	23,62,827	20
<b>Furniture and Fixture</b>				
Balance as per last B/Sheet	42,849	00		
Add : Additions during the year	4,404	15		
	47,253	15		
Less : Depreciation	2,142	00	45,111	15
<b>Stocks :</b>				
Food-grains	1,525	92		
Live Stock	460	00	1,985	92
<b>Advances and Deposits :</b>				
(a) To Members	3,403	42		
To Employees	1,825	00		
To Others	90,679	10		
(b) To Deposits	7,899	30	1,03,806	82
<b>Income outstanding :</b>				
Rent	1,526	75		
Interest	1,04,109	12	1,05,635	87
<b>Cash and Bank Balances :</b>				
(a) In current accounts, savings a/c deposits a/c with Banks, Centres, Branches and Presses.	3,36,148	92		
(b) with Managers and Secretaries at Branches, Centres and presses	4,027	31	3,40,176	23
<b>Total</b>			<b>48,61,237</b>	<b>03</b>

As per our separate report of even date

Poona  
14th August 1969

A. H. JOSHI & CO.  
Chartered Accountants

## SERVANTS OF INDIA SOCIETY, POONA 4

*Statement of earmarked funds passed on to the Society as Trust  
Funds as on 31st March, 1969*

NAME OF THE TRUST FUND	Rs.	P.
<b>1. Gokhale Memorial Trust Fund :</b>		
Received in securities from the Memorial Committee formed in Bombay, the face value of the Securities being Rs. 1,33,000 the benefit of which is to be spent for the general purposes of the Society.		
Balance as per last B/Sheet.	1,33,000	00
<b>2. Gokhale Memorial Library Trust Fund :</b>		
Received from the Ex-Trustees at Nagpur for managing the Public Library situated there on a leasehold plot of land. The building then valued was of Rs. 6,075. Securities and cash balances handed over to the Society were of Rs. 5,843-86. The whole of the fund has been spent over the G. M. L. Building.		
Balance as per last B/Sheet.	11,918	86
<b>3. Rao Bahadur D. Laxminarayan Trust Fund :</b>		
Received from the Executors of the will of the late Shri D. Laxminarayan for maintaining a branch at Nagpur in that area (former Province of Madhya Pradesh) with three members there. The amount was received in cash.		
Balance as per last B/Sheet	1,00,000	00
<b>4. South India Flood Relief Fund :</b>		
Received as per the Order of the High Court out of the residuary balance of the above Fund in form of securities worth Rs. 21,415-47 and cash balance of Rs. 10-92. The benefit of the Fund is to be utilised in the specified area affected by the floods in Madras Presidency.		
Balance as per last B/S	22,451	87
Add : Interest during year	651	00
	23,102	87
	2,68,021	73

## SERVANTS OF INDIA SOCIETY, POONA 4

Statement of earmarked funds passed on to the Society as Trust  
Funds as on 31st March, 1969

NAME OF THE TRUST FUND	Rs.	P.	Rs.	P.
Total B/F	..	..	2,68,021	73
<b>Late Mr. Nayanar Memorial Trust Fund :</b>				
This Fund was raised by the friends of Mr. Nayanar, a deceased member of the Society, to celebrate his memory by giving suitable scholarships, educational aid to Harijan Students in the Madras Presidency.				
Balance as per last B/S	11,610	12		
Add : Interest during the year	464	00		
	12,074	12		
Less : Paid for scholarships	300	00	11,774	12
<b>6. Hiralal Atmaram Patel Trust Fund :</b>				
Received from the Executors as per conditions in the Deed for relief work in Gujarat and Kathiawar.				
Balance as per last B/S	34,264	29		
Add : Interest during the year	1,370	00	35,634	29
<b>7. Lady Laxmibai Distress Relief Fund :</b>				
Received from the Executors of the will of the late Lady Laxmibai w/o Sir Jagmohandas Vurjeevandas, Bombay, for distress relief in India.				
Balance as per last B/S	36,703	75		
Add : Interest during the year	1,468	00		
	38,171	75		
Less : Paid for Koyana Relief work	5,000	00	33,171	75
<b>8. Gokhale Day Celebration Fund :</b>				
Balance as per last B/Sheet			2,000	00
<b>9. Dr. P. Narasinha Raju Distress Relief Trust Fund :</b>				
Received in form of debentures and shares from Dr. P. Narashinha Raju, the total face value being Rs. 2,640, the benefit of which is to be spent mainly for Distress Relief.				
Balance as per last B/S	3,122	53		
Add : Interest during the year	78	80	3,201	33
<b>Total</b>			<b>3,53,803</b>	<b>22</b>

## SERVANTS OF INDIA SOCIETY, POONA 4

*Statement of Funds and Other Reserves set aside by the Society  
from its Income or Resources as on 31st March 1969.*

NAME OF THE FUND		Rs.	P.	Rs.	P.	Rs.	P.
<b>1. Aryabhushan Press :</b>							
( i ) Reserve Fund :							
Balance as per Last B/S.							
( ii ) Building Reserve Fund :							
Bal. as per last B/S.		1,47,020	12				
( iii ) Add : Additions during the year							
		4,200	00				
Add : Interest during the year							
		5,880	00	1,57,100	12		
( iv ) Rehabilitation Reserve :							
Balance as per last B/S.				82,947	69		
( v ) Machinery Depreciation Fund							
Bal. as per last B/S.		98,885	46				
Add : Additions during the year							
		15,448	45	1,14,333	91	3,54,381	72
<b>2. Bombay Vaibhav Press :</b>							
( i ) Reserve Fund :							
Bal. as per last B/S.		76,296	11				
Add : Additions during the year							
		4,116	00	80,412	11		
( ii ) Retrenchment Reserves :							
Balance as per last B/S.				36,000	00		
( iii ) Rehabilitation Reserve							
				5,000	00		
						1,21,412	11
<b>3. Hitavada :</b>							
( i ) Reserve Fund :							
Bal. as per last B/S.		68,225	00	68,225	00		
( ii ) Retrenchment Compensation Reserve							
Bal. as per last B/S.		30,532	44	30,532	44		
( iii ) Building Reserve Fund :							
Bal. as per last B/S.		6,702	45				
Add : Interest during the year							
		268	00	6,970	45		
( iv ) Hitavada Rehabilitation Reserve :							
Balance as per last B/S.				65,000	00		
( v ) Hitavada Gratuity Provision A/c.							
Balance as per last B/S				22,927	00		
( vi ) Building Depreciation Fund :							
Bal. as per last B/S.		9,649	00				
Interest during the year							
		385	00	10,034	00	2,03,688	89
<b>Total C. F. ..</b>						<b>6,79,482</b>	<b>72</b>

## LIST B (Contd.)

## SERVANTS OF INDIA SOCIETY, POONA 4.

*Statement of Funds and other Reserves set aside by the Society  
from its Income or Resources as on 31st March 1969.*

NAME OF THE FUND	Rs.	P.	Rs.	P.	Rs.	P.
			Total B/F		6,79,482	72
4. Servindia Relief Fund :						
Balance as per last B/S			27,952	13		
Add : Interest during the year			1,118	00		
			29,070	13		
Less : Paid to Relief work in Karwar Dist.			5,000	00	24,070	13
5. Investments Fluctuation Reserve Fund :						
Balance as per last B/Sheet					1,00,000	00
6. Workmen's Welfare Fund :						
The Fund is intended for giving relief to the workers in the A. B. Press.						
Balance as per last B/S	9,905	24				
Add : Interest during the year	396	00				
	10,301	24				
Less : Relief granted during the year	300	00			10,001	24
7. Servindia Welfare Fund :						
The Fund has been built up by the Society for the general benefit of its employees :						
Balance per last B/S	7,136	19				
Add : Interest during the year	285	00				
	7,421	19				
Less : Amounts paid during the year	400	00			7,021	19
8. Insurance Fund :						
Fund is built up of matured life policies of members, The amounts are payable on death ( Vide Bye- Law No. 5 )						
Balance as per last B/S	14,757	00				
Add : Amount of policy matured during the year	3,000	00			17,757	00
					8,38,332	28

Poona  
14th August 1969

A. H. JOSHI & CO.  
Chartered Accountants

# **RAO BAHADUR R. R. KALE TRUST FUND**

*Income and Expenditure Account for the year ending 31st March 1969.*

EXPENDITURE			INCOME			
	Rs.	P.		Rs.	P.	Rs. P.
<b>To Expenses in respect of Properties</b>			<b>By Rent Realised</b>			
„ Establishment Expenses			„ Interest Realised			
„ Bank Charges	1	65	„ On Securities	20,057	74	
„ Legal Expenses			„ On Debentures	200	00	20,257 74
„ Audit Fees			„ Dividend on shares			1,215 00
„ Expenditure on the objects of the Trust			„ Donations in Cash or kind			
Grants to Gokhale Institute of			„ Grants for Research work			45,000 00
Politics and Economics	15,000	00	„ Income from other sources			
„ Surplus carried to Balance Sheet	81,973	24	„ Overhead Charges received			
			from Gokhale Institute of			
			Politics and Economics			
			Securities	30,412	15	
				90	00	30,502 15
<b>Total</b>	<b>96,974</b>	<b>89</b>	<b>Total</b>	<b>96,974</b>	<b>89</b>	

8

Poona  
16th August, 1969

As per our separate report of even date.  
A. H. JOSHI & CO.  
Chartered Accountants.



# **RAO BAHADUR R. R. KALE TRUST FUND**

*Balance Sheet as on 31st March, 1969*

*( June 1969 )*

LIABILITIES		Rs.	P.	Rs.	P.	ASSETS		Rs.	P.
<b>Trust Fund and Corpus</b>						<b>Investments ( at costs )</b>			
Balance as per last B/S.		3,10,631	77			( As per list attached )		4,50,847	81
Add : Transferred from Income & Expenditure A/c		2,01,107	34			Amount Due from			
Add : Transferred from Investment Reserve Fund		12,432	24	5,24,171	35	1. Servants of India Society		41,671	84
						2. Gokhale Institute of Politics & Economics		48,441	96
<b>Investment Reserve Fund</b>									
Balance as per last B/Sheet		14,222	50						
Less : Transferred to Trust Fund		12,432	24	1,790	26				
<b>Income and Expenditure Account</b>									
Balance as per last B/Sheet		1,19,134	10						
Add : Surplus for the year		81,973	24						
		2,01,107	34						
Less : Transferred to Trust Fund		2,01,107	34						
<b>Amount Due to Gokhale Institute of Politics and Economics</b>				15,000	00				
				5,40,961	61			5,04,961	61

Poona

Dated : 16th August, 1969

As per our separate report of even date.

A. H. JOSHI & CO.

Chartered Accountants

# **RAO BAHADUR R. R. KALE TRUST FUND**

*Investments as on 31st March, 1969*

	Face value	Book Value	Rate	Market Value	Interest/ Dividend	Remarks
3% G. P. Notes 1896-97	10,000	8,025 00	59 25	5,925 00	300 00	
3% G. P. Notes 1970-75	2,500	2,187 50	98 00	2,450 00	75 00	
3% Conversion Loan 1946	33,300	33,237 50	60 10	20,013 30	999 00	
3% Bombay Municipal Debentures, 1977	2,500	2,400 00	77 75	1,943 75	81 24	
4% Madhya Bharat Loan, 1968	—	—	—	—	240 00	Rs. 12,000 matured
4% Maharashtra Loan, 1969	15,000	14,973 90	99 60	14,960 00	600 00	
4% Bombay S. D. Loan, 1970	50,000	50,000 00	98 80	49,400 00	2,000 00	
4% Bombay S. D. Loan, 1971	35,000	35,367 50	98 15	34,352 50	1,400 00	
4% Bombay S. D. Loan, 1971	40,000	37,400 00	98 15	39,260 00	1,600 00	
4½% Bombay S. D. Loan, 1970	38,000	38,000 00	99 10	37,658 00	1,615 00	
4½% Andhra Co. Op. C.L.M.B. Debn. 1975	14,000	13,930 00	95 00	13,930 00	595 00	
4½% Mysore L.M.C. Co.op. Bank Debn. 1975 & 78	35,000	35,000 00	99 00	34,650 00	1,575 00	
4½% Government of India Loan 1986	50,000	47,675 00	98 85	49,425 00	2,250 00	
5½% M. P. Co. Op.L.M.B.Debn. 1976-81	42,000	39,200 00	*	42,000 00	2,415 00	
5½% Maharashtra S. D. Loan, 1979	75,000	73,800 00	100 40	75,300 00	4,312 50	
5½% M. P. Rajya Sahakari Bhoomi Vikas Bank Ltd.,	2,000	1,901 41	*	2,000 00	—	
Debentures : 4% Satara Inamdar Mandal	5,000	5,000 00	*	5,000 00	200 00	
Shares : Kirlskar Bros. Ltd., 540 Equity	13,500	12,750 00	38 50	20,790 00	1,215 00	Recd. 90 Bonus shares
	4,62,800	4,50,847 81	—	4,49,057 55	21,472 74	

\*No. Quotation

Examined and found correct.  
A. H. JOSHI & CO.  
Chartered Accountants.

Poona  
Dated : 16th August, 1969

# CONSTITUTION

## OF THE

### Servants of India Society

---

The following Constitution has been adopted for the Society\*:

1. The Society shall be called "The Servants of India Society".
2. The objects of the Society are to train national missionaries for the service of India and to promote, by all constitutional means, the interests of the Indian people.
3. The Society will consist of (a) a First Member or President; (b) a Vice-President; (c) Ordinary Members; and (d) Members under Training.
4. The First Member or President will be the head of the Society.
5. Every member, on admission, shall undergo a special training for a period of five years. During the period, he will be known as a 'Member under Training'. When a Member under Training has completed his five years' discipline, he will be styled as an 'Ordinary Member' of the Society.
6. Subject to Rules 12, 12A, and 13, every member of the Society shall be a member for life.
7. The First Member or President, assisted by a Council, shall manage the affairs of the Society in accordance with the Bye-laws framed for the purpose. The Council shall consist of the Vice-President, the Senior Members of the Branches and three Ordinary Members elected annually by the members of the Society, the retiring Members being eligible for re-election.

---

\* हिंदू सेवक संघ has been adopted as its name in the vernaculars.

8. No person will be admitted as a member of the Society unless his admission is recommended by the Council and the recommendation accepted by the First Member or President.

9. Every member at the time of admission shall take the following seven vows :

- ( i ) The country shall always be the first in my thought and I will give to her service the best that is in me.
- ( ii ) In serving the country I will seek no personal advantage for myself.
- ( iii ) I will regard all Indians as brothers and work for the advancement of all without distinction of caste or creed.
- ( iv ) I will be content with such provision for myself *and my family*, as the Society may be able to make. I will devote no part of my energies to earning money for myself.
- ( v ) I will lead a pure personal life.
- ( vi ) I will engage in no personal quarrel with any one.
- ( vii ) I will always keep in view the aims of the Society and watch over its interests with the utmost zeal, doing all I can to advance its work. I will never do anything which is inconsistent with the objects of the Society.

10. Every Member under Training shall, during the time that he is under training, place himself under the entire guidance and control of the First Member or President, and shall do such work and devote himself to such studies as the First Member or President may direct.

11. An Ordinary Member may be sent by the First Member or President and Council to any part of India on special duty or for general work in connection with the Society. He will be bound to do the work assigned to him under the general direction of the First Member or President and Council and shall obey orders and instructions that may be received from them.

---

\* The italicised words to be omitted if there be no family.

12. The Society may release a member from its vows and permit him to resign his membership on the ground of continued ill-health or for other sufficient cause, on a recommendation to that effect being made by the Council, with the concurrence of not less than three-fourths of the members of the Society, and the recommendation being accepted by the First Member or President.

12A. The Society may, in exceptional circumstances, permit a member to retire after thirty years' approved service or on the attainment of the age of seventy after twenty-five years' approved service on a recommendation to that effect being made by the Council, with the concurrence of not less than three-fourths of the members of the Society, and the recommendation being accepted by the First Member or President. A member so permitted shall cease to be a member of the Society.

13. The Society may remove the name of any member from its roll of members on a recommendation to that effect being made by the Council, with the concurrence of not less than three-fourths of the members of the Society, and the recommendation being accepted by the First Member or President. The Society will not be bound to disclose the reasons for such removal.

14. (a) The First Member will hold office for life.

(b) It will be the duty of the First Member to recommend in writing to the Council the name of three Ordinary Members out of whom the members of the Society shall elect a successor to him as First Member on a vacancy occurring. If no such recommendation has been received by the Council when the vacancy occurs, the members of the Society may elect any Ordinary Member or in the absence of a suitable Ordinary Member, any member to succeed as First Member.

(c) In case, however, it appears undesirable to elect a First Member, the members may elect one of the members to be President of the Society for a period of three years.

(d) The members of the Society shall elect an Ordinary Member to be Vice-President of the Society for three years.

(e) The First Member or President may, notwithstanding any other rule, delegate any of his functions to the Vice-President and, during the absence of the Vice-President from India, to any other Ordinary Member.

(f) The Council of the Society shall appoint one of the Ordinary Members to be the Secretary of the Society.

15. When a vacancy occurs in the First Membership or Presidentship of the Society, the Council shall exercise all the powers vested by the Rules in the First Member or President singly or the First Member or President and Council, until such time as a new First Member or President is duly elected ; and any act done by the Council during such time shall be deemed valid, provided that the Council takes steps with all reasonable dispatch to arrange for the election of a new First Member or President under rule 14 (b) or 14 (c), as the case may be.

16. In special circumstances the First Member or President and Council may exempt, for reasons to be recorded in writing, any member of the Society from the operation of any rule save Rule 9.

17. An applicant for membership may be required to pass through a period of probation before admission and may in that case be enrolled as a Probationer, on such terms and for such period, as the First Member or President and Council may determine.

18. The First Member or President and Council may remove the name of any Probationer from the list of Probationers before the expiry of the period of probation. The Society will not be bound to disclose the reasons for such removal.

19. The First Member or President and Council may admit any person, who, in their opinion, is capable of being trained to assist members of the Society in their work and who is prepared to devote his life to such work, as a Permanent Assistant of the Society, on such terms as the First Member or President and Council may determine.

20. A Permanent Assistant may, on grounds of special fitness and after a period of approved service of not less than

three years, be admitted as Member under Training by the First Member or President and Council.

21. The First Member or President and Council may remove the name of any Permanent Assistant from the list of Permanent Assistants of the Society. The Society will not be bound to disclose the reasons for such removal.

22. The First Member or President and Council may admit any person who is in full sympathy with the objects of the Society and is prepared to devote himself to such work as may be assigned to him for the benefit of the Society as an Attache of the Society on such terms and under such control as the First Member or President and Council may determine.

23. The First Member or President and Council may remove the name of any Attache from the list of Attaches of the Society. The Society will not be bound to disclose the reasons for such removal.

24. The First Member or President and Council may enrol any person who is in full sympathy with the object of the Society and who is prepared to devote a portion of his time and resources to the furtherance of its work as an Associate of the Society.

25. Probationers, Permanent Assistants, Attaches and Associates will have no voice in the management of the affairs of the Society and no interest in the Society's property or funds,

26. All property of the Society shall belong to the Society in its corporate character, and no member in his individual capacity nor the heirs, executors or assignees of any member shall have any right to any portion of it.

27. (a) The property of the Society, whether immovable or movable, including stocks, funds, shares and other securities and all other property otherwise vested in or transferred to the Society as trustee or in any other capacity, shall be held in the name of the Society or the Governing Body as constituted under Rule 7 and shall remain under the general control, supervision and management of the First Member or President of the Society for the time being and the Council.

(b) All arrangements, deeds, conveyances, contracts, transfers or other instruments relating to the sale, transfer or other transactions or dealings entered into by the Society or to which the Society is a party, whether relating to the property, whether immovable or movable, belonging to the Society or held by the Society as trustee or in any other capacity, shall be made, signed, sealed, delivered or executed by such person or persons as the First Member or President and Council may from time to time appoint. For the purpose of this rule any authority given by the First Member or President under his signature alone authorising any person or persons to enter into, make, sign, deliver or execute any deed or instrument, contract or transfer and recording the fact that such authority is given with the approval of the Council shall be deemed sufficient and valid authority to such person or persons to execute the several rights, powers and authorities thereby given to him or them. For all payments received by or made to the Society the receipt of the Secretary or such person or persons as the First Member or President and Council may from time to time appoint shall be valid and complete discharge to the party making such payment.

(c) The Society shall be at liberty to invest the surplus funds in its hands in the securities authorised by the Indian Trusts Act or in the purchase of such landed properties of any tenure as the First Member or President and Council may from time to time determine.

(d) Subject to the conditions in respect of properties (if any) entrusted to the Society and earmarked for specific objects, if and whenever it is found expedient or necessary, the First Member or President and Council shall be at liberty to deal with the properties belonging to the Society, whether movable or immovable, by sale, mortgage, lease, or pledge thereof or otherwise. All deeds, documents, agreements, mortgages, contracts or transfers in respect of the properties so sold, mortgaged, leased, or pledged or otherwise dealt with shall be executed as provided in clause 27 (b) hereof.

28. In all suits brought by or against the Society, the Society shall be represented by the First Member or President or such other person or persons nominated or appointed by the First



29. The Society shall not be dissolved by the death, secession or removal of any member.

30. The First Member or President may, with the concurrence of a majority of the Ordinary Members of the Society, make, alter or rescind any Bye-law or Bye-laws for ( 1 ) the management of the affairs of the Society and the conduct of its business; (2) the custody, disposal and control of the funds of the Society; (3) the provision to be made for members of the Society and their families, the grant of special allowance to them in special circumstances, and of pensions to members retiring under Rule 12A; (4) the grant of leave to members of the Society; (5) the grant of allowances to Permanent Assistants and Attaches of the Society; and ( 6 ) the carrying out in other ways of the objects of the Society.

31. The First Member or President and Council shall have power to take whatever steps that may be deemed necessary in the interest of the Society provided that they are not inconsistent with the objects of the Society or with the provisions or spirit of any of the Rules or Bye-laws at the time in force.

32. No alteration shall be made in this Constitution unless it is recommended by the Council with the concurrence of not less than three-fourths of the members of the Society and the recommendation is accepted by the First Member or President.



## Bye-Laws

---

The following Bye-Laws have been made under Rule 30 :

1. The Society shall, as circumstances permit, establish Branches for work in different parts of the country. At the head of each Branch there shall be a Senior Member, whose appointment and removal shall vest in the First Member or President and Council. He will be an *ex-officio* member of the Council. The affairs of each branch shall be managed by a Board consisting of the Senior Member and the Ordinary Members belonging to it.

2. (a) Every Member under Training will be granted an allowance of Rs. 225 a month for the first year, Rs. 230 for the second year of the training and thereafter he will get an increment of Rs. 10 annually in his allowance until he reaches the maximum of Rs. 350 at the end of 14 years of his membership of the Society.

(b) A rent allowance not exceeding Rs. 50 a month or the actual rent paid, if less, will be granted to members, in case there are no quarters available on the premises of the Society.

(c) Permanent Assistants will be paid such allowance as the Council of the Society may determine.

(d) Every Probationer will be given an allowance of Rs. 200 a month during the period of his probation.

(e) Every Member under Training, who may be deputed to work in the City of Bombay, will be paid Rs. 5 as Bombay Allowance until he becomes an Ordinary Member.

(f) In case of serious illness, Members may be paid by the Branches, on the recommendation of the Senior Member, the whole or part of the medical fees and medicine charges.

3. Notwithstanding any provision in Bye-Law No. 2, the First Member or President and Council may, after due inquiry

and for sufficient cause, at a meeting of the Council at which no less than four members are present, reduce by not more than half the allowance for a period not exceeding one year at a time but in no case for more than two consecutive years.

4. (a) A Member under Training is entitled to two months' leave every year, which may be granted by the First Member or President, and if the applicant is attached to a Branch, by the Senior Member of the Branch.

(b) Ordinary Members are entitled to a month's leave every year. Senior Members may grant leave for one month and the First Member or President for three months and the First Member or President and Council for longer periods.

(c) Ordinary Members of the Madhya Pradesh and Berar are entitled to one month and ten days' privilege leave if they go on leave on the 1st of May.

(d) All Members are entitled to twenty days' casual leave in a year.

(e) Both casual and privilege leave mentioned above will, only be sanctioned if the work of the Society permits.

5. (a) The life of a member enrolled after June 12, 1962, will on admission, be assured by the Society in favour of the First Member or President for the time being for a sum of Rs. 5,000 only, Rs. 5,000 being payable at death. If no Insurance Company accepts the life of any Member for assurance, the First Member or President and the Council may make such other arrangements as they deem fit to secure, in the case of such a Member, the object of this Bye-Law.

(b) On the death of a Member whose life has been assured for Rs. 3,000 under Bye-Law No. 5 (a) as it stood on June 1, 1962, the First Member or President shall pay only Rs. 3,000 on the life-policy of the deceased to such person or persons as the deceased Member may, by will or otherwise in writing, have directed. In addition, the President shall pay out of the revenues of the Society an additional sum of Rs. 2,000 as an ad hoc grant to such person or persons.

In the absence of such direction, the First Member or President and Council shall have power to determine whether the amount recovered may be paid to any person or persons belonging to the family of the deceased, and if so, to whom.

In this Bye-Law, the word "Member" includes a Member who has been permitted to retire under rule 12 A.

6. The First Member or President and Council may grant, in special circumstances, a special allowance to a Member or a Permanent Assistant suitable to the requirements of his case.

6A. The First Member or President and Council may grant to a Member who is permitted to retire under Rule 12A such pension as they consider suitable to the requirements of his case. In case, however, such a Member acts in a manner prejudicial to the interests of the Society, the First Member or President and Council may withhold it from him.

7. If a Member's connection with the Society is terminated under Rule 12 or Rule 13, he and his family shall forfeit all claim to the benefit secured to him or them under these Bye-Laws.

8. The funds of the Society may be deposited in the Banks approved by the Council, and the accounts shall be in the name of the Society, its Branches, Centres and Business Concerns as the case may be, and be operated upon by such persons and in such manner as the Council may decide from time to time.

9. (a) When the First Member or President and Council resolve to enrol any one as Associate, the fact will be communicated to the person concerned by the Secretary.

(b) In case any application for Associateship is rejected the Society will not be bound to disclose the reasons.

(c) A Branch may, where practicable, ascertain the opinion of the Associates assigned to it in respect of any new schemes of work contemplated by it and in respect of any question of policy to be laid down by the Society on occasions when momentous questions are before the country.

(d) An Associate will so conduct himself as not to compromise the position of the Society, but further its aims and interests.

(e) Associates will be kept informed by the Headquarters of the Society about the progress of the work from time to time; will be invited to attend the anniversary of the foundation day; will be allowed to use the libraries of the Society at the Headquarters and at the Branches; may be invited to attend special sessions and be allowed to reside, if room be available, at the Headquarters or the Branches for purposes of study or work.

(f) The President and Council may remove the name of an Associate from the list of Associates maintained at the Headquarters on a recommendation to that effect being received from the Branch to which the Associate is assigned. The Society will not be bound to disclose the reasons for such removal.

---

## Members of the Servants of India Society, October 1, 1969.

Name of the Member	Date of admission to the Society	Address
<i>President :</i>		
1 Hriday Nath Kunzru, B.A., B. SC., LL.D. ..	11-7-1909	†S. I. S. ,1. P. D. Tandon Road, Allahabad 2. also, Sapru House, Barakhamba Road, New Delhi 1 Phone Nos. Allahabad 2130, New Delhi 40243
<i>Vice-President :</i>		
2 Annakavoor Duraiswamy Subramani (A. D. Mani), M.A. M.P. ..	14-6-1935	S. I. S., Dhantoli, Nagpur 1. Phone No. 2066
<i>Senior Members :</i>		
3. Dattatray Vasudeo Ambekar .. ..	20-12-1914	„ Poona 4. Phone Nos. 56813 & 56210
4. Dinkar Dattatray Desai, M. A., LL.B., M.P. ..	12-6-1936	„ Vallabhbbhai Patel Road, Bombay 4. Phone No. 355014
5 Rama Shankar Misra, B.A., LL.B. ..	12-6-1937	„ 1, P. D. Tandon Road, Allahabad 2. Phone No. 2130

†S. I. S. stands for Servants of India Society

Name of the Member	Date of admission to the Society	Address
<i>Ordinary Members :</i>		
§ 6 Shankar Govind Gokhale, M.A. * ..	29-7-1928	S. I. S., Poona 4. Phone No. 56210.
7 Keshav Ganesh Sharangapani, B.A., LL.B. ..	25-9-1930	S. I. S., Poona 4. Phone No. 56210.
§ 8 Singanallur Ramakrishna Venkataraman, B.A., B.L. ..	25-9-1930	S. I. S., Royapettah, Madras 14. Phone No. 86252.
§ 9 Ramachandra Sadashiv Gupte .. ..	30-6-1933	S. I. S., Rural Centre, P. O. Shendurjana Bazar ( Dist. Amravati )
10 Shyam Sundar Misra, M.A. --- ..	12-6-1936	„ Cuttack, Orissa. Phone No. 522.
11 Raghunath Govind Kakade, M.A., LL.B., PH. D., ..	12-6-1943	„ Poona 4. Phone No. 56210.
12 Madhusudan Sahoo, B.A., D.A. M.S., ..	14-6-1963	S. I. S., Cuttack, Orissa. Phone No. 252.
<i>Members under Training :</i>		
13 Sarwadaman Shankar Ajgaonkar, M.A. ..	16-6-1966	S. I. S., Vallabhbhai Patel Road, Bombay 4 Phone No. 355014.

§ Member of Council.

\*Secretary.

## THE HITAVADA

The oldest newspaper in Central India, published in Nagpur and Bhopal simultaneously. Celebrated its Golden Jubilee in June 1961. It has a sense of pride in the consciousness that it serves a much larger area than it had the privilege of doing so when it was founded. From December 1957, the newspaper is being published also from Bhopal and the Bhopal Edition covers the northern districts of the vast expanse of Madhya Pradesh, while the Nagpur paper serves the Vidarbha area. A special Madhya Pradesh Edition specially designed for readers in Madhya Pradesh is published in Nagpur and is circulated through the medium of easy train facilities in the Eastern and North-Eastern districts of Madhya Pradesh. Thus from the two focal points of Nagpur and Bhopal, the Hitavada now serves an area from Gwalior to Bastar and from Khandesh to Satna.

Chief Editor : *Shri A. D. Mani, M. P.*

General Manager : *Mr. A. Subramaniam*

Annual Subscription : Rs. 42 (Local)

Rs. 46 (Mofussil)



# WORK OF THE SOCIETY AT A GLANCE

	<i>Nature of Work</i>	<i>Members engaged in it</i>
Political :	<i>General</i>	Pandit Kunzru, Shri Mani, Shri Ambekar, Shri Gokhale, Shri Venkataraman.
	<i>Legislatures</i>	Shri Mani, Shri Dinkar Desai.
	<i>Journalism</i>	Shri Mani, Shri Desai, Shri Ajgaonkar.
Social:	<i>Education</i>	Pandit Kunzru, Shri Desai, Shri S. S. Misra, Shri Ajgaonkar.
	<i>Social Service</i>	Pandit Kunzru, Shri Venkataraman, Shri R. S. Misra, Shri Kakade Shri S. S. Misra, Shri S. S. Ajgaonkar.
	<i>Aborigines</i>	Shri Venkataraman, Shri R. S. Misra, Shri M. Sahoo.
	<i>Rural Uplift &amp; Local Self-Government</i>	Shri Desai, Shri Venkataraman, Shri Gupte, Shri S. S. Misra, Shri Kakade.
	<i>Distress Relief</i>	Shri R.S. Misra, Shri Kakade.
	<i>Business Concerns</i>	Shri Ambekar (A. B. Press, Poona). Shri Dinkar Desai (B. V. Press, Bombay). Shri Mani (Hitavada Press, Nagpur)