

CHINA CHRONICLE NO. 12.

**Symbol of the New Life of China
NANKING: THE CAPITAL**

by

RALPH A. WARD

PEIPING

THE PEIPING CHRONICLE

April, 1935

**Symbol of the New Life of China
NANKING: THE CAPITAL**

by

RALPH A. WARD

PEIPING

THE PEIPING CHRONICLE

April, 1935

FOREWORD

Thirty years ago when I first went to Nanking to live it was a charming old city with a quiet life like that of a great village, but with a bit of Imperial colour as it was the Viceroy's capital, with the ruler Tuan Fang in power. Dr. Arthur H. Smith loved to show a postcard he found there with the title "A Lovely Village in the City of Nanking". In the ruined villa area of Nanking, made by the destruction wrought in 1850-1860 by the Taipings, there were many such lovely villages, and good hunting was found within the city wall.

All these things are changed now. Dr. Ward has caught and depicted both the spirit and the facts of the new Nanking and all for which it stands. Fortunately it is embodying not only the new from the West but also much of the old and good from the East and we now know that the good, the true and the beautiful from China's past in architecture, painting and ceramics as well as in philosophy, ethics and religion are found in the new Capital, as well as in old Peiping and also in the life of the Chinese people.

W. B. PETTUS.

The Living Capital*

Those who have visited Nanking within the past two years will not think Dr. Ralph Ward's picture of it, given in adjoining columns, at all exaggerated. Recent visitors have been struck by the vast difference between busy, wide-awake Nanking and the easy-going Peking that was the capital of the country until seven years ago. It is impossible to go along the streets without feeling that here is a place where things are being done, and a visit to any of the Government offices goes far to confirm the impression. The sense of timelessness that used to seize the visitor to Government departments in Peking ten years ago, the long waits for possibly-not-going-to-turn-up ministers or vice-ministers, the tomorrow-will-do spirit in which so much business was done, a heritage from times when time almost literally did not matter and was not counted, is absent from Nanking. There is a feeling that everybody in a Government office, from its head down to its doorkeeper, has to "clock in", and that Government offices are places where things have to be done and are being done. Appointments can actually be made for nine o'clock in the morning! In the streets the well appointed and numerous buses, two big concerns operating them, the ubiquitous motor-cars, the prompt and efficient traffic-control and the fine roads all conspire to suggest real life, life at its youngest and most ebullient. Nanking may be described as a Capital of Youth. Young men are on the bridge of the Government ship of state driving it full speed ahead; and they know whither they are driving. Yes, driving, not drifting. Dr. Ward, who is a resident of Nanking, might easily have filled in many more details of his picture of bustling activity, of creative energy, and still have much left to tell.

W. SHELDON RIDGE..

*Editorial note in THE PEIPING CHRONICLE.

NANKING: THE CAPITAL

Symbol of the New Life of China.

BY RALPH A. WARD.

*An Address delivered by Dr. Ward at the College
of Chinese Studies.*

The Question of Capital

Nanking is much more than a substitute for Peking as the National Capital. It is an expression of the new life of the Chinese people in a new era. Peking was an expression of that life in another and distinctly different period.

One does not wish to argue for the choice of Nanking as the Capital. There must have been arguments against it as well as for it. Its advantages are now of more interest since it is increasingly the Capital in fact as well as in name.

During more than four hundred years, scattered through intervals, it had been the capital before. Five hundred years ago, in 1421, Peking was made the Capital because it was a better centre in that period for protection against dangerous enemies who approached from the North.

Changed Conditions

But economic, social and political conditions, as well as means and methods of warfare, have changed since that time. The major resources for meeting both external and internal dangers are along the Yangtze River and in the South. Railway and steamer communications and materials now needed either for defence or against revolt have shifted the centre of national strategy.

Less than a century ago there was no Shanghai to speak of. Today it is the largest city on the continent of Asia and growing at the rate of two hundred thousand people a year. Two-thirds of the foreign trade of China passes through that port. It has the greatest concentration of wealth. It is the chief gate of advent for that modern civilization that China is receiving and developing. To have the Capital within

seven hours of rail travel to Shanghai is evident strategy, not to say a necessity. To put the commercial capital and the political Capital close together reduces friction. For centuries Canton and the South have been creative centres of new life and revolution.

Washington, D. C. is near New York, not to say Philadelphia, Baltimore, Boston and the densely

populated East. Nanking not only brings the Capital nearer to Shanghai but equi-distant from Canton and Tientsin and within easier reach of the whole Yangtze Valley.

Of course, Nanking is exposed to foreign gunboats on the river. Much more so is Washington, which was captured and badly damaged by the British in the war of 1812-14. But two hundred miles of winding river between Nanking and the sea lends itself to adequate protection.

To Moscow from St. Petersburg the Bolsheviks moved the Russian capital for their new epoch in Russian life. George Washington left New York and founded a new city to express the new life of the American nation. Nanking is a city of ancient patriotic meanings. The Revolutionists realized that in 1912 when Dr. Sun Yat-sen, Provisional



OFFICIAL RESIDENCE OF THE CHAIRMAN OF THE NATIONAL GOVERNMENT.

President, solemnly made a pilgrimage to the Ming Tombs at the base of Purple Mountain outside Nanking and made an address to the Spirit of the Founder of the Ming Dynasty, pledging himself to follow his illustrious leadership in maintaining a Chinese Government for the Chinese people. But the glories and traditions of Nanking are far enough in the past not to be too troublesome politically. Modern Chinese have been trying for more than a generation to create a new government with a new personnel and new traditions. The location of the National Capital in Nanking, a new, politically un-inhabited city, has made a new start easier in national government. And Nanking today is a new city. If you only saw it eight years ago or even two years ago you do not know Nanking, the National Capital of today.

Nearly every national capital

expresses certain dominant ideas and becomes certain things. Like people, it achieves a sort of personality.

The New Construction

Of course it is a centre for government on a national scale. That means administrative buildings. The policies for building construction in Nanking have been wise. Old provincial buildings have been remodelled for temporary use. As funds can be made available for permanent buildings various departments are provided with them. In 1932 the Railway Administration was housed in a modern building that will serve with credit for half a century for twice as long. In 1934 was completed the new building of the Waichiao Pu which gives the Foreign Office a fine place for the meeting of foreign representatives. Its architecture is international. The next higher step in construction is the new Ministry of Communications, completed in 1935, which will stand in beauty as a distinctive architectural contribution for centuries, a worthy adornment for any National Capital, adapting to modern uses China's ancient motifs in architecture. The Supreme Court is housed in an insignificant building in western style, looking like an

American school-house of twenty-five years ago in a city five thousand people; but when we see it we recall that the American nation waited over a century before it gave its highest court a separate building. And this new building in Nanking represents a policy of furnishing adequate temporary structures for those departments that can wait twenty or thirty years for more magnificent permanent quarters.

Wide streets, boulevards, parks, and differentiated residential sections are being rapidly developed. Twenty large new roads and business streets were opened during the last two years. There is plenty of room for expansion within the city walls, twenty-one miles in length. The city is well zoned for residences, Government buildings and business houses.



THE MINISTRY OF COMMUNICATIONS.
(Opened in December, 1934).



THE CENTRAL NATIONAL UNIVERSITY.

Ambitious Plan for Modern City

When the Capital was officially moved to Nanking architects laid out an ambitious plan for a modern city. Several years have passed and one finds that plan being followed with refreshing fidelity. The development goes steadily forward each year. Confiscation of private property for new roads is ruthless at times, but there is an even-handed fairness in pursuing the published programme without yielding to personal favouritism. Well surfaced streets for motor traffic (which increases feverishly), a new public water supply, a system of ever-extending modern sewers, adequate lighting of streets, trained and sensible traffic policemen, and the constant stimulus of new commercial buildings make the new Nanking a promising contrast to its ancient walls, whose gates are still closed at night and carefully guarded by

inspecting soldiers by day, with an amusing concern for people with cameras who seem to the soldiers to be dangerous spies on the military strength of mural fortifications. People who are working hard to make progress often lose their sense of humour with reference to themselves and take themselves far too seriously, so the

visitor to Nanking may find a delightful hospitality suddenly and incongruously interrupted by some amusing officiousness which he does well to heed and then forget—save to laugh at out of sight.

A Cultural Centre

A National Capital becomes a cultural centre. That means art galleries, museums, libraries, universities and other higher educational institutions, playhouses and creative personalities. Nanking has long been the centre of one of the national universities which is now being strengthened both internally and by provision for a wonderful new and large site in the national reservation at the base of Purple Mountain. Nanking University, Ginling College, and tributary Middle Schools of a high standard, as well as the University Hospital, are significant contributions of Christian Missions to the cul-

ture and influence of the new sentiment and patriotism Capital. The Academia Sinica grow. The vast region outside the East Gate, including Purple Mountain, is a national reservation with marvellous possibilities which are being constantly developed. Reforestation and landscaping, wide asphalt roads winding through the young forests, lakes which were a part of the old moat, and the well preserved city wall add their setting for institutions and activities in this beautiful national centre eastward of the official city.

First, one comes to the School for the Sons of the Revolution. It is truly a model, modern institution. To it are admitted only boys of the death of whose father or brother on a battlefield for his country there is indisputable proof. Then there is the horticultural conservatory and adjoining gardens with scores of acres of land devoted to agricultural experiments, where hundreds of strains of wheat are growing side by side to discover and grow better varieties for farmers throughout the country. The National Bureau of Agriculture also has a new experimental farm of three hundred acres in this region.

Centre of Sentiment and Patriotism

The Government appreciates the value of places in which



**THE NEW MINISTRY OF FOREIGN
AFFAIRS.**

A little farther on is "Square City", a small garrison tower of the T'ang dynasty. In it,

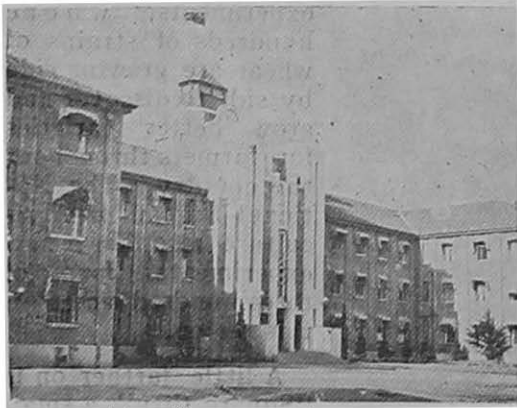
with a delightful touch of democracy, the Chairman of the Government of China, Mr. Lin Sen, has built very modest quarters as a sort of country home to which he retires for quiet. Across the road is the new official "White House" of China, with the Stadium and athletic centre a mile beyond on the same side of the road.

The "Arlington Cemetery" of Nationalist China has a magnificent start toward being one of the greatest memorial burial grounds in the world. In the west towards the city and on the lower ranges of Purple Mountain it begins with the Ming Tomb. The ancient approach to the tomb through an avenue of huge stone figures of animals, and of men on the



THE TOMB OF TAN YEN-KAI
MEMORIAL PAGODA.

heroic scale is being kept in good condition. The Government has an eye to the abiding value of historic monuments. A half-mile to the east rises the mausoleum of Dr. Sun Yat-sen. Beyond it is the old monastery and burial place of "Spirit Valley" with its famous "beamless Hall," whose walls bear thousands of memorial names. The more general burial place of patriots behind it opens to the new pagoda on a higher level. The landscaping and reconstruction of this section have been directed by a New York architect, Mr. H. K. Murphy. This "Yankee Pagoda" is probably the only one in China built by a foreigner. Farther to the west the new tomb and memorial



THE SUPREME COURT OF
THE REPUBLIC.

grounds of Tan Yen-k'ai, completed in 1934, are one of the most nearly perfect pieces of landscaping and creative architecture to be seen anywhere. Its *feng shui* is just right.

Enough hills and valleys in this reservation have been set aside for a residential suburb to allow the building of a goodsized city, and this region is gradually being used for private residences and attractive modern apartment "villages." The Foreign Office extends hospitality to foreign guests in this region where it has provided a fine golf course and new club house. Inside the city it also provides a building for the International Club where people of many nationalities get better acquainted.

Cosmopolitan Chinese City

Nanking has become a cosmopolitan Chinese city. Its population has increased at the rate of a hundred thousand a year to over eight hundred thousand in 1935. Probably fourfifths of the people now there were not there seven years ago. They have come from all the provinces of China itself and have returned from many places overseas. There is in the city the camaraderie of the American "boom town" and the newcomer finds himself amongst other new-comers who do not resent his coming as "natives" might do. This is fine social soil in which to grow a new city with new standards and traditions.



BIRD'S-EYE VIEW OF THE GREAT STADIUM.
"CHINESE ARLINGTON" IN BACKGROUND.