

All Parties Conference.  
1928.

Report of Committee

# All Parties Conference 1928

Report  
of the Committee appointed by the  
Conference to determine the principles  
of the Constitution  
for India

PUBLISHED BY THE GENERAL SECRETARY, ALL INDIA  
CONGRESS COMMITTEE, ALLAHABAD

*First edition 2000* - *12th August 1928*  
*Second edition 3000* - *27th August 1928*

*Some minor errors and misprints in the first  
edition have been corrected in this edition.*

---

ALL PARTIES  
CONFERENCE  
1928  
REPORT OF COMMITTEE

---

## CONTENTS

	PAGE
Letter to President	
Introductory .. .. .	1
<b>THE REPORT</b> .. .. .	<b>15</b>
I The Committee .. .. .	17
II The Communal Aspect .. .. .	27
III The Communal Aspect ( <i>cont.</i> ) Reservation of Seats .. .. .	34
IV Re-distribution of Provinces .. .. .	61
V Indian States .. .. .	70
VI Other Proposals .. .. .	89
VII The Recommendations .. .. .	100
VIII Note on the Informal Conference and after	125
IX Schedule I, Central Subjects .. .. .	127
X Schedule II, Provincial Subjects .. .. .	130
<b>THE APPENDICES</b> .. .. .	<b>135</b>
Appendix A: Punjab Population Figures..	137
Appendix B: Bengal Population Figures..	148
Appendix C: Bengal District Board Figures	154
 <b>MAPS</b>	
Punjab Facing page .. .. .	136
Bengal " " .. .. .	149

To

DR. M. A. ANSARI

PRESIDENT, ALL PARTIES CONFERENCE

DEAR MR. PRESIDENT,

I have the honour to present to you the report of the Committee appointed by the All Parties Conference in Bombay on May 19th, 1928 to consider and determine the principles of the Constitution for India. I regret the delay in presenting this report. You have already been informed of the reasons for this delay and you were good enough to extend the time for the presentation of this report.

Yours Sincerely

MOTILAL NEHRU

*Chairman*

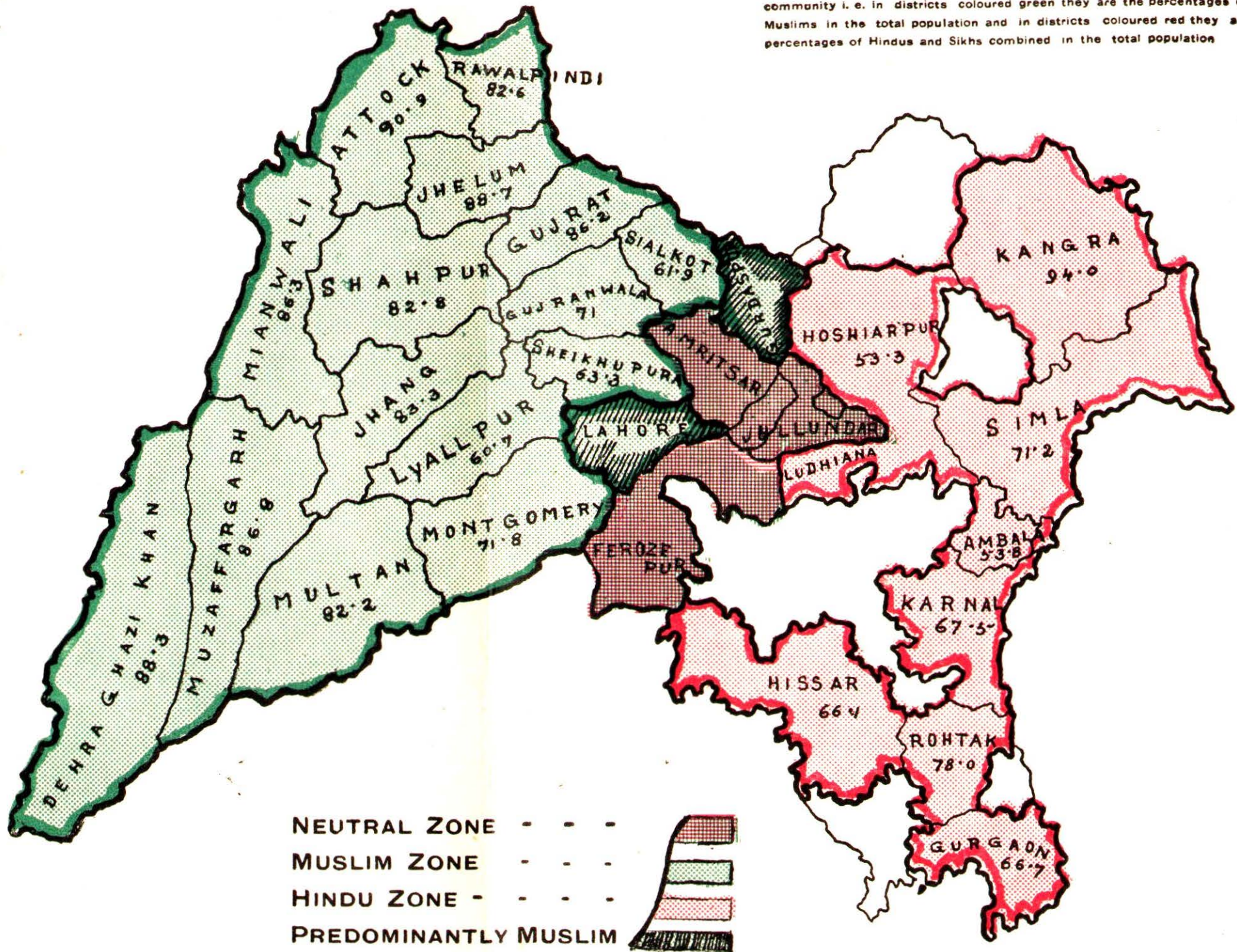
ALLAHABAD

*August 10, 1928*

## THE APPENDICES

# PUNJAB

The figures show percentages of the population of the preponderating community i. e. in districts coloured green they are the percentages of Muslims in the total population and in districts coloured red they are percentages of Hindus and Sikhs combined in the total population





## APPENDIX A

---

### An analysis of the population figures of the Punjab according to religion

*Being a note on the population figures of the Punjab with special reference to the probable extent of the representation of various religious groups in the legislature*

This note is based on the following assumptions :

1. That there is ordinary territorial representation with what are called joint or mixed electorates and without any reservation of seats.
2. That there is adult franchise, or at any rate some franchise which ensures that the numbers of electors of the various communities bear the same ratio to each other as the population figures of those communities.

The figures and calculations in these notes are based entirely on the 1921 census. It may be mentioned however that the ratio of increase of Muslims in the Punjab is slightly greater than that of Hindus. This according to the census report is not due now to conversions but to certain social causes—widow remarriage and a higher marriage age amongst the Muslims. Infantile mortality is greater amongst the Hindus owing to early marriages. Hence it is probable that the Muslim population in the Punjab to-day is slightly greater proportionately than is evidenced by the 1921 census figures. The next census may show this increase. This means that the calculations in these notes are conservative figures so far as the Muslims are concerned, and the actuality is more favourable to them.

It is not possible to arrive at any accurate conclusion regarding representation in legislatures on population figures from a census report. A great deal must depend on the grouping of constituencies. It is also by no means certain, and it certainly is most undesirable, that in a joint electorate a Hindu should always vote for a Hindu, and a Muslim for a Muslim. But it is not possible to make allowances for this in these calculations. As the question is being considered in its communal aspect we must presume that as a general rule votes will be cast on communal lines. The constituencies not having been formed the only alternative is to examine the figures for the individual districts. It is likely that either a whole district or a part of it will form a single constituency.

The population of the Punjab (excluding Indian States) in 1921 was 20685,024. This was made up as follows :

Muslims	..	..	11,444,321	..	55.3%
Hindus	..	..	6,579,260	..	31.8%
Sikhs	..	..	2,294,207	..	11.1%
Others (mainly Christians)	..	..	367,236	..	1.8%
			<hr/>		
			20,685,024	<hr/>	
				100.0%	

Thus the Muslims are in a clear but not a great majority over all others combined. If the distribution of population is more closely examined it will be seen that the Muslims are in an even stronger position than the all Punjab figures might indicate. This is due to the fact that the Hindus and Sikhs are present in large numbers in the southern part of the province—Ambala and Jullundur divisions. Muslims are in a minority in these two divisions but they make up for it by increasing their majorities elsewhere.

The Punjab can be divided roughly into three natural belts or areas—(1) the predominantly Muslim area, (2) the neutral area but with Muslim majority and (3) the Hindu-Sikh area. If we take the existing divisions as corresponding approximately to these areas we have the following three belts:

- I. Rawalpindi and Multan divisions forming the Muslim zone with Muslims in very great majorities (86.9% and 76.9% respectively).
- II. Lahore division forming the neutral zone, but Muslims in a majority (57.0%) over all others combined.
- III. Ambala and Jullundur divisions forming the Hindu-Sikh zone. Muslims are in a minority (26.3% and 32.8%) respectively).

We can form some rough idea of the representation in the legislature on the basis of these communal zones. Allowing one member for every hundred thousand of population we have:

		<i>Population in thousands</i>	<i>Members of legislatures</i>	
Punjab.....	..	20,685	207	
I. {	Rawalpindi division	.. 3461	.. 35	} 77
	Multan division	.. 4218	.. 42	
II.	Lahore division	.. 4997	.. 50	50
III. {	Ambala division	.. 3827	.. 38	} 80
	Jullundur division	.. 4182	.. 42	
			<hr/>	
				207
			<hr/>	

We may presume that the Muslims will capture all the seats in the Muslim zone and Hindu-Sikhs all the seats in the Hindu-Sikh zone. In the Lahore division there may be a division of the spoils. This of course cannot and should not happen in its entirety. It is not desirable that each division should be represented by one community only. But in making a rough calculation one may presume this much—the seats gained by the Muslims in the Hindu-Sikh area will probably be counterbalanced by the seats gained by the Hindu-Sikhs in the Muslim area.

As a matter of fact there is more chance of the Muslims gaining a seat in the Hindu-Sikh area than the reverse, as the Muslim majorities in Rawalpindi and Multan divisions are tremendous (86.0% and 76.9%).

Thus we arrive at the conclusion that the Muslims are bound to get 77 seats in their zone, and the Hindu-Sikhs combined 80 seats in their zone. The third zone—Lahore division—will probably be divided between the two, but the division is likely to be very much in favour of the Muslims. They are 57.0% of the population, the Hindus being 20.7% and the Sikhs 16.2%. Christians etc. amount to 6.1% but they may be left out of consideration here as presumably they have no special affiliations to the major communities and can certainly not be considered as being anti-Muslim or as belonging to the Hindu-Sikh *bloc*. Hindus and Sikhs together amount to 36.9% as against the 57.0% of the Muslims. The Muslims are thus more than one and a half times stronger than the Hindu-Sikh group. The difference is considerable and the Muslim strength must make itself felt in an election. The Muslim majority in this division should ordinarily gain more seats than it is entitled to on basis of population. But even if it got seats exactly in proportion to its population in the division, it would have 29 seats. This added to the 77 seats in the Muslim belt gives the figure 106 which gives a small but clear majority in the legislature of 207, over all other communities and groups combined. The majority will really be much greater over the Hindu-Sikh *bloc* as the "others" may also be in the minority.

All this proceeds on the basis that Hindu and Sikh interests are identical and the two groups hang together on all occasions. This of course is not a justifiable presumption and it is more than likely that they may not always act together. In such a contingency each community's hopeless minority in the face of the solid Muslim majority will become even more obvious.

As the Lahore division is likely to be the critical one, it may be examined in greater detail. Out of the 6 districts in this division three districts—Sialkot, Gujranwala and Sheikhupura—have very substantial Muslim majorities. And as "others" (Christians etc.) are present in appreciable numbers in these districts the Muslim majorities *vis-a-vis* the Hindu-Sikh *bloc* become even greater and are really overwhelming.

The figures are :

**Sialkot district**

Muslims	..	..	61.9%	} .. 9½ seats
Hindus	..	..	19.5%	
Sikhs	..	..	8.0%	
Others	..	..	10.5%	

The Hindu-Sikh *bloc* totals 27.5% as against the 61.9% of the Muslims. The latter thus are considerably more than double the number of the Hindus and Sikhs combined.

**Gujranwala district**

Muslims	..	..	71.0%	} .. 6½ seats
Hindus	..	..	15.8%	
Sikhs	..	..	8.2%	
Others	..	..	5.1%	

The Hindu-Sikh *bloc* totals 24.0% as against the 71.0% of the Muslims. The latter are thus nearly three times the number of Hindus and Sikhs combined.

**Sheikhupura district**

Muslims	..	..	63.3%	} .. 5½ seats
Hindus	..	..	16.0%	
Sikhs	..	..	15.9%	
Others	..	..	4.8%	

The Hindu-Sikh *bloc* totals 31.9% as against the 63.3% of the Muslims. The latter are thus just double the number of the Hindus and Sikhs combined.

In these three districts the Muslims are in an impregnable position. Indeed they really form part of the Muslim zone and should be considered along with it. These districts will be entitled to send 21 members to the legislature. These can be added to 77 members from the Muslim zone giving the total 98.

In the other districts of Lahore division the position is as follows :

**Lahore district**

Muslims	..	..	57.3%	} .. 11 seats
Hindus	..	..	21.5%	
Sikhs	..	..	15.9%	
Others	..	..	5.3%	

Here the Hindu-Sikh *bloc* totals 37.4% as against the 57.3% of the Muslims. The Muslim majority is not so great as in the northern districts but it is substantial. The Muslims greatly outnumber the Hindus and Sikhs, being over one and a half times their number.

**Amritsar district**

Muslims	..	..	45.6%	} .. 9 seats
Hindus	..	..	21.6%	
Sikhs	..	..	30.9%	
Others	..	..	1.8%	

In this district the Hindus and Sikhs combined amount to 52.5% and are in a fair majority over the 45.6% Muslims.

**Gurdaspur district**

Muslims	..	..	49.6%	} .. 8½ seats
Hindus	..	..	26.0%	
Sikhs	..	..	16.2%	
Others	..	..	8.2%	

Here the Muslims outnumber the Hindus and Sikhs combined—49.6% against 42.2—but the majority is not great. The position in Amritsar district is reversed. There are a fair number of "others" here.

Thus in these three districts, the Muslim position is strong in Lahore, fair in Gurdaspur and weak in Amritsar. But even in the last mentioned place the Muslims are by far the strongest single community.

It is highly likely that Muslims will capture some seats in these districts, specially in Lahore.

The Lahore division will thus be largely represented by Muslims and this representation added to that from the Muslim zone in the north and west ought to give them a clear majority.

This question can be considered from another point of view. Instead of looking at the divisions as a whole the individual districts may be taken. This will probably give a more accurate idea of the result.

There are 29 districts in the Punjab. These may be divided into four groups (1) overwhelmingly Muslim districts where the Muslim position is impregnable; (2) predominantly Muslim districts, where there is a Muslim majority but not so great as in (1); (3) districts where there is no special predominance of any community; and (4) overwhelmingly or predominantly Hindu-Sikh districts.

### I. Overwhelmingly Muslim districts

	<i>Percentage of Muslims given after districts</i>	<i>No. of members in legislatures</i>
1. Gujrat	86.2	8
2. Shahpur	82.8	7
3. Jhelum	88.7	5
4. Rawalpindi	82.6	6
5. Attock	90.9	5
6. Mianwali	86.3	4
7. Montgomery	71.8	7
8. Lyallpur	60.7	10
9. Jhang	83.3	6
10. Multan	82.2	9
11. Muzaffargarh	86.8	5½
12. Dera Ghazi Khan	88.3	5
13. Sialkot	61.9	9½
14. Gujranwala	71.0	6
15. Sheikhpura	63.3	5
		98

### II. Predominantly Muslim districts

1. Lahore	H.	21.5	}	..	..	11
	M.	57.3				
	S.	15.9				
	O.	5.3				
2. Gurdaspur	H.	26.0	}	..	..	8½
	M.	49.6				
	S.	16.2				
	O.	8.2				
					19½	

### III. Districts with no special predominance of any community

1. Jullundur	H.	29.4	}	..	..	8
	S.	25.1				
	M.	44.5				
	O.	1.0				

2. Ferozepur	H.	27·6	}	..	..	11
	S.	27·6				
	M.	43·9				
	O.	·9				
3. Amritsar	H.	21·6	}	..	..	9
	S.	30·9				
	M.	45·6				
	O.	1·8				

---

28

Even in these three districts the strongest single community is the Muslim.

#### IV. Overwhelmingly or predominantly Hindu-Sikh districts

1. Hissar	H.	66·1	8			
2. Rohtak	H.	78·0	8			
3. Gurgaon	H.	66·7	7			
4. Karnal	H.	67·5	8			
5. Ambala	H.	53·8	7			
6. Simla	H.	71·2	2			
7. Kangra	H.	94·0	8			
8. Hoshiarpur	H.	53·3	9			
9. Ludhiana	H.	23·6	}	..	..	6
	S.	41·5				
	M.	34·0				
	O.	·9				

---

61½

According to this the Muslims get from their special zone of 15 districts where they are impregnable	98
The Hindus similarly get from their zone ..	61½
Two districts predominantly Muslim return ..	19½
Three districts more or less neutral, but Muslims strongest single community in each ..	28

---

207

104 seats give an absolute majority in the legislature.

The result of the analysis of the figures for the districts leads us to the following conclusions:—

- From the Muslim zone alone, where the Muslim position is unassailable, the Muslims get 98 seats or .. .. . 47·3 of the total seats
- From the Hindu Sikh belt where the Hindu-Sikh position is very strong the Hindus and Sikhs get 61½ seats or .. .. . 29·8 Do
- In two districts where Muslims are predominant there are 19½ seats or .. .. . 9·4 Do.

4. In 3 districts the strength of the various communities is more or less evenly balanced but Muslims are the strongest single community in each, total 28 seats or .. .. .. 13.5 of the total 100.0 seats.

It is exceedingly likely that from group II above, which is predominantly Muslim, the Muslims will get at least 10 out of the 19½ seats. This added to their seats from their particular zone gives them 108 seats which is a clear majority in the legislature. In group III above the Muslims should also get some seats as they are the strongest single community. They might safely count on 12 out of the 28. This raises the Muslim number in the legislature to 120 out of 207 or 58% of the total. Thus on a conservative estimate Muslims are highly likely to have 58% of the seats in the legislature.

### PUNJAB (BRITISH TERRITORY)

#### Detailed population figures

#### Punjab

Total population	..	20,685,024	..	100.0 per cent.
Muslims	..	11,444,321	..	55.3 "
Hindus	..	6,579,260	..	31.8 "
Sikh	..	2,294,207	..	11.1 "
Others (mainly Christians)	..	367,236	..	1.8 "

### PUNJAB DIVISIONS

(Population figures in thousands)

Ambala Division	Populations	Percentage	No. of members in legislature 1 for 100,000
Total	3827	100	} .. 38
H	2556	66.6	
M	1006	26.3	
S	158	4.2	
O	106	2.8	
<b>Jullundur Division</b>			
Total	4128	100	} .. 42
H	1893	45	
M	1370	32.8	
S	880	21.0	
O	40	.9	
<b>Lahore Division</b>			
Total	4997	100	} .. 50
H	1033	20.7	
M	2849	57.0	
S	813	16.2	
O	303	6.1	

### Rawalpindi Division

Total	..	3461	100	} .. 35
H	..	296	8·5	
M	..	2973	86·0	
S	..	153	4·4	
O	..	38	1·1	

### Multan Division

Total	..	4218	100	} .. 42
H	..	602	14·3	
M	..	3246	76·9	
S	..	290	6·9	
O	..	80	1·9	

Note.—H=Hindu M=Muslim S=Sikh O=Others

## PUNJAB DISTRICTS

### 1. Overwhelmingly Muslim Districts

<i>District</i>		<i>Population in Thousands</i>	<i>Percentage</i>	<i>No. of members in legislature</i>
1. Gujrat	.. T.	824	100	} .. 8·2
	H.	59	7·2	
	M.	710	86·2	
	S.	49	6·0	
	O.	6	·7	
2. Shahpur	.. T.	720	100	} .. 7·2
	H.	79	11	
	M.	596	82·8	
	S.	30	4·2	
	O.	15	2·1	
3. Jhelum	.. T.	477	100	} .. 4·8
	H.	33	6·9	
	M.	423	88·7	
	S.	19	4·0	
	O.	2	·4	
4. Rawalpindi	.. T.	569	100	} .. 5·7
	H.	55	9·7	
	M.	470	82·6	
	S.	32	5·6	
	O.	12	2·1	
5. Attock	.. T.	512	100	} .. 5·1
	H.	25·5	5·0	
	M.	465·5	90·9	
	S.	20	3·9	
	O.	1	·2	
6. Mianwali	.. T.	358	100	} .. 3·6
	H.	45	12·6	
	M.	309	86·3	
	S.	3	·8	
	O.	1	·3	



7. Montgomery..	T.	714	100	} .. 7·1
	H.	92	12·9	
	M.	513	71·8	
	S.	96	13·4	
8. Lyallpur ..	T.	980	100	} .. 9·8
	H.	177	18·1	
	M.	595	60·7	
	S.	161	16·4	
9. Jhang ..	T.	570	100	} .. 5·7
	H.	84	14·7	
	M.	475	83·3	
	S.	9	1·6	
10. Multan ..	T.	890	100	} .. 8·9
	H.	129	14·5	
	M.	732	82·2	
	S.	18	2·0	
11. Muzaffargarh	T.	568	100	} .. 5·7
	H.	66	11·6	
	M.	493	86·8	
	S.	5	·9	
12. Dera Ghazi Khan (including Biloch tract).	T.	496	100	} .. 5·0
	H.	54	10·9	
	M.	438	88·3	
	S.	1	·2	
13. Sialkot ..	T.	938	100	} .. 9·4
	H.	183	19·5	
	M.	581	61·9	
	S.	75	8·0	
14. Gujranwala ..	T.	623	100	} .. 6·2
	H.	98	15·8	
	M.	443	71	
	S.	51	8·2	
15. Sheikhpura ..	T.	523	100	} .. 5·2
	H.	84	16·0	
	M.	331	63·3	
	S.	83	15·9	
O.	25	4·8		
<hr/>				
15 Districts.				97·6 members

## II.—Predominantly Muslim Districts

(Where Muslims are greater than Hindus and Sikhs combined but are not so many as in I above).

1. Lahore	.. T.	1131	100	}	.. 11·3
	H.	243	21·5		
	M.	648	57·3		
	S.	180	15·9		
	O.	60	5·3		
2. Gurdaspur	.. T.	852	100	}	.. 8·5
	H.	222	26·0		
	M.	423	49·6		
	S.	137·5	16·2		
	O.	69·5	8·2		
<hr/>					
2 Districts.					19·8 members.

## III.—Districts in which there is no special predominance of any community but Muslim community strongest

single group					
1. Jullundur	.. T.	822·5	100	}	.. 8·2
	H.	242	29·4		
	M.	366·5	44·5		
	S.	206	25·1		
	O.	8	1·0		
2. Ferozepur	.. T.	1098	100	}	.. 11
	H.	303	27·6		
	M.	482	43·9		
	S.	303	27·6		
	O.	10	·9		
3. Amritsar	.. T.	929	100	}	.. 9·3
	H.	201	21·6		
	M.	424	45·6		
	S.	287	30·9		
	O.	17	1·8		
<hr/>					
3 Districts.					28·5 members.

## IV.—Overwhelmingly or predominantly Hindu-Sikh Districts

1. Hissar	.. T.	817	100	}	.. 8·2
	H.	540	66·1		
	M.	216	26·4		
	S.	46	5·6		
	O.	15	1·8		
2. Rohtak	.. T.	772	100	}	.. 7·7
	H.	602	78·0		
	M.	125	16·2		
	S.	1	·1		
	O.	44	5·7		

3. Gurgaon	.. T.	682	100	} .. 6·8
	H.	455	66·7	
	M.	217	31·8	
	S.	1	·1	
	O.	9	1·3	
4. Karnal	.. T.	829	100	} .. 8·3
	H.	560	67·5	
	M.	236	28·5	
	S.	12	1·4	
	O.	21	2·6	
5. Ambala	.. T.	682	100	} .. 6·8
	H.	367	53·8	
	M.	206	30·2	
	S.	98	14·4	
	O.	11	1·6	
6. Simla	.. T.	45	100	} .. 0·4
	H.	32	71·2	
	M.	7	15·5	
	S.	1	2·2	
	O.	5	11·1	
7. Kangra	.. T.	766	100	} .. 7·7
	H.	722·3	94·0	
	M.	38·3	5·0	
	S.	2	·3	
	O.	3·4	·7	
8. Hoshiarpur	.. T.	927	100	} .. 9·3
	H.	494	53·3	
	M.	289	31·2	
	S.	133	14·3	
	O.	11	1·2	
9. Ludhiana	.. T.	568	100	} .. 5·7
	H.	134	23·6	
	M.	193	34·0	
	S.	236	41·5	
	O.	5	·9	
<hr/>				
9 Districts.				60·9 members.

These figures demonstrate that quite apart from any artificial reservation of seats there is a natural reservation in more than three-fourths of the Punjab. In less than one-fourth there is some chance of free play. The distribution of population favours the majority community, Muslims, considerably.

## APPENDIX B

### *A note on the population figures of Bengal by religion*

The population of the British territory in Bengal at the 1921 census was 46,695,536. This was divided up by religion as follows:—

Muslims	..	25,210,802	..	54·0 per cent.
Hindus	..	20,203,527	..	43·3 „
Others	..	1,281,207	..	2·7 „

“Others” are chiefly tribal religions and Christians, the former being found largely in the hill tracts. They also include Jains and Buddhists etc., but there are not many of these.

The Muslims thus have a slight majority of 4% over all the others put together. This majority however is not evenly distributed over the province. The Hindus are as a matter of fact largely concentrated in one part of Bengal—the Burdwan division and part of the Presidency division—with the result that the Muslim majority elsewhere is far more than 4%. Bengal like the Punjab, presents definite zones of Hindu or Muslim population. Examining these zones roughly by divisions we find that three divisions are overwhelmingly Muslim, one is overwhelmingly Hindu, and one is more or less evenly balanced but with a 4% Hindu majority.

*No. of members of legislature  
1 per 100,000 population.*

#### A. Muslim Zone

1.	Chittagong division	..		60
	Muslims	..	72·6 per cent.	
	Hindus	..	23·8 „	
2.	Dacca division	..		128
	Muslims	..	69·7 „	
	Hindus	..	29·7 „	
3.	Rajshahi division	..		103
	Muslims	..	61·4 „	
	Hindus	..	33·7 „	

#### B. Overwhelmingly Hindu Zone

4.	Burdwan division	..		80
	Muslims	..	13·4 „	
	Hindus	..	82·4 „	




#### C. Moderately Hindu Zone

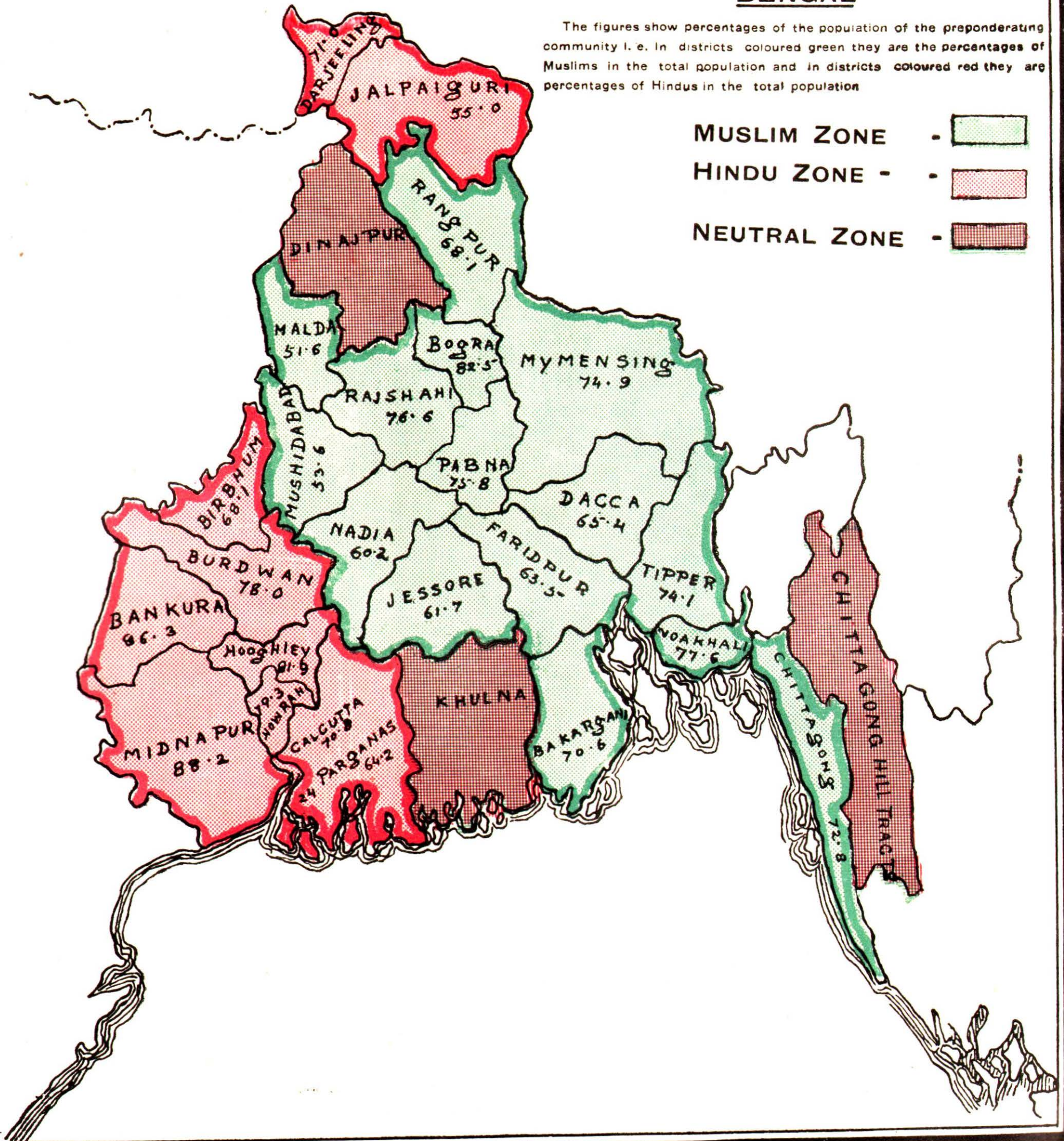
5.	Presidency division	..		95
	Muslims	..	47·5 „	
	Hindus	..	51·4 „	

	466
--	-----

# BENGAL

The figures show percentages of the population of the preponderating community i. e. In districts coloured green they are the percentages of Muslims in the total population and in districts coloured red they are percentages of Hindus in the total population

- MUSLIM ZONE - 
- HINDU ZONE - 
- NEUTRAL ZONE - 



We see that the Muslim zone has 291 seats in it; the strong Hindu zone 80 seats and the moderately Hindu zone 95 seats. The total number of seats if one member is to be given for every 1,00,000 population comes to 466. Thus 234 gives a clear majority. In the Muslim zone alone there are 291 seats, that is 57 more than are necessary for a majority. In the Presidency division however Muslims are 47·5% and it is not conceivable that they can be ignored. They are sure to get a number of seats there. The distribution of population is such that they are bound to get more seats than these numbers warrant. They may suffer from economic causes or educational backwardness but the loss from this cannot outbalance the gains from solid majorities in the Muslim zone.

The population figures can be examined in greater detail by districts. The actual figures by religions are given at the end of this note. These figures can be classified as follows:—

			<i>No. of members in legislature.</i>
<b>A. Overwhelmingly Muslim Districts</b>			
Chittagong	..	..	16
Noakhali	..	..	15
Tippera	..	..	27
Mymensing	..	..	48
Bakerganj	..	..	26
Faridpur	..	..	23
Dacca	..	..	31
Pabna	..	..	14
Bogra	..	..	10
Rangpur	..	..	25
Rajshahi	..	..	15
Jessore	..	..	17
Nadia	..	..	15
			<hr/> 282 <hr/>
<b>B. Predominantly Muslim Districts</b>			
Murshidabad	..	..	13
Malda	..	..	10
			<hr/> 23 <hr/>
<b>C. Predominantly Hindu District</b>			
Jalpaiguri	..	..	9
<b>D. Neutral Districts</b>			
Khulna	..	..	14
Dinajpur	..	..	17
Chittagong Hill Tribes	..	..	2
			<hr/> 33 <hr/>

### E. Overwhelmingly Hindu Districts

Burdwan	..	..	14
Birbhum	..	..	8
Bankura	..	..	10
Midnapur	..	..	27
Hooghly	..	..	11
Howrah	..	..	10
24 Parganas	..	..	26
Calcutta	..	..	9
Darjeeling	..	..	3
			118

This analysis of district figures leads us to the same conclusion as the analysis of the division figures. The Muslim and Hindu zones are solid blocks which are natural areas of reservation if voting is to take place on religious lines. The Muslim zone including both groups A and B gives us as many as 305 seats. Even leaving out group B we have 282 seats which is far more than the number required to give a majority.

### ANALYSIS OF POPULATION OF BENGAL BY RELIGION

#### A. Bengal Divisions

	<i>Population in thousands</i>	<i>Percentage</i>	<i>No. of members in Legislature I per 100,000</i>
<b>Burdwan Division</b>			
Total	8050	100	} .. 80
Hindus	6607	82·1	
Mohammedans	1082	13·4	
Others	361	4·5	
<b>Presidency Division</b>			
Total	9461	100	} .. 95
Hindus	4864	51·4	
Mohammedans	4476	47·5	
Others	120	1·2	
<b>Rajshahi Division</b>			
Total	10345	100	} .. 103
Hindus	3487	33·71	
Mohammedans	6349	61·4	
Others	508	4·9	
<b>Dacca Division</b>			
Total	12837	100	} .. 128
Hindus	3813	29·7	
Mohammedans	8946	69·7	
Others	78	·6	
<b>Chittagong Division</b>			
Total	6000	100	} .. 60
Hindus	1432	23·8	
Mohammedans	4356	72·6	
Others	212	3·5	

### All Bengal British Territory

Total	46695	100	} .. 467
Hindus	20203	43·4	
Mohammedans	25211	54·0	
Others	1281	2·7	

### B. Bengal Districts

<i>Districts</i>	<i>Population in thousands</i>	<i>Percentage</i>	<i>No. of members in Legislature per 100,000</i>
<b>Burdwan Division</b>			
1. Burdwan .. T.	1439	100	} .. 14
	H. 1122	78·0	
	M. 266	18·5	
	O. 50	3·5	
2. Birbhum .. T.	848	100	} .. 8
	H. 577	68·1	
	M. 213	25·1	
	O. 58	6·8	
3. Bankura .. T.	1020	100	} .. 10
	H. 880	86·3	
	M. 47	4·6	
	O. 93	9·1	
4. Midnapur .. T.	2667	100	} .. 27
	H. 2352	88·2	
	M. 181	6·8	
	O. 134	5·0	
5. Hooghly .. T.	1080	100	} .. 11
	M. 885	81·9	
	H. 173	16·0	
	O. 22	2·1	
6. Howrah .. T.	997	100	} .. 10
	H. 791	79·3	
	M. 202	20·3	
	O. 4	·4	
<b>Presidency Division</b>			
7. 24 parganas.. T.	2628	100	} .. 26
	H. 1687	64·2	
	M. 910	34·6	
	O. 31	1·2	
8. Calcutta .. T.	908	100	} .. 9
	H. 643	70·8	
	M. 209	23·0	
	O. 56	6·2	
9. Nadia .. T.	1487	100	} .. 15
	H. 582	39·1	
	M. 895	60·2	
	O. 10	·7	



10. Murshidabad	T.	1262	100	} .. 13
	H.	569	45·1	
	M.	676	53·6	
	O.	17	1·3	
11. Jessore	.. T.	1722	100	} .. 17
	H.	656	38·2	
	M.	1063	61·7	
	O.	2	·1	
12. Khulna	.. T.	1453	100	} .. 14
	H.	727	50·0	
	M.	723	49·8	
	O.	3	·2	
<b>Rajshahi Division</b>				
13. Rajshahi	.. T.	1489	100	} .. 15
	H.	318	21·3	
	M.	1140	76·6	
	O.	31	2·1	
14. Dinajpur	.. T.	1705	100	} .. 17
	H.	752	44·1	
	M.	837	49·1	
	O.	116	6·8	
15. Jalpaiguri	.. T.	936	100	} .. 9
	H.	515	55·0	
	M.	232	24·8	
	O.	189	20·2	
16. Rangpur	.. T.	2507	100	} .. 25
	H.	791	31·5	
	M.	1706	68·1	
	O.	10	·4	
17. Bogra	.. T.	1048	100	} .. 10
	H.	174	16·6	
	M.	865	82·5	
	O.	9	·9	
18. Darjeeling	.. T.	283	100	} .. 3
	H.	201	71·0	
	M.	9	3·2	
	O.	73	25·8	
19. Pabna	.. T.	1389	100	} .. 14
	H.	334	24·1	
	M.	1055	75·8	
	O.	1	·1	
20. Malda	.. T.	985	100	} .. 10
	H.	400	40·6	
	M.	508	51·6	
	O.	77	7·8	
<b>Dacca Division</b>				
21. Dacca	.. T.	3125	100	} .. 31
	H.	1069	34·2	
	M.	2043	65·4	
	O.	13	·4	

22. Faridpur ..	T.	2250	100	}	.. 23
	H.	816	36.3		
	M.	1428	63.5		
	O.	6	.3		
23. Bakarganj ..	T.	2623	100	}	.. 26
	H.	754	28.7		
	M.	1851	70.6		
	O.	18	.7		
24. Mymensing ..	T.	4838	100	}	.. 48
	H.	1174	24.3		
	M.	3624	74.9		
	O.	40	.8		
<b>Chittagong Division</b>					
25. Tippera ..	T.	2743	100	}	.. 27
	H.	708	25.8		
	M.	2033	74.1		
	O.	2	.1		
26. Noakhali ..	T.	1472	100	}	.. 15
	H.	329	22.3		
	M.	1142	77.6		
	O.	1	.1		
27. Chittagong ...	T.	1611	100	}	.. 16
	H.	364	22.6		
	M.	1172	72.8		
	O.	74	4.6		
28. Chittagong Hill tracts ..	T.	173	100	}	.. 2
	H.	32	18.5		
	M.	7	4.1		
	O.	134	77.4		
			<b>TOTAL</b>	..	<b>465</b>

T.=Total  
 H.=Hindus  
 M.=Mohammedans  
 O.=Others

## APPENDIX C

### Statement about elected members of the District Boards in Bengal ( 1927-1928 )

<i>Names of districts</i>	<i>Total no. of seats</i>	<i>No. of Hindu members</i>	<i>No. of Moham- medan members</i>
1. 24 Parganas..	20	16 (64·2)	4 (34·6)
2. Bogra ..	15	4 (16·6)	11 (82·5)
3. Bakargunj ..	20	5 (1 Chris- tian) (28·7)	15 (70·6)
4. Midnapore ..	22	21 (88·2)	1 ( 6·8)
5. Rajshahi ..	18	7 (21·3)	11 (76·6)
6. Rangpore ..	18	7 (31·5)	11 (68·1)
7. Khulna ..	16	11 (50·0)	5 (49·8)
8. Hooghly ..	20	17 (81·9)	3 (16·0)
9. Darjeeling ..	20	18 (Non- Mohammedan) (71·0)	2 ( 3·2)
		Others 25·8	
10. Mymensingh	22	Nil (24·3)	22 (74·9)
11. Pabna ..	16	3 (24·1)	13 (75·8)
12. Noakhali ..	16	6 (22·3)	10 (77·6)
13. Jalpaiguri ..	16	14 (55·0)	2 (24·8)
		Others 20·2	
14. Tippera ..	19	13 (25·8)	6 (74·1)
		(3 nominated, elec- tion having failed in C h a n d p u r Sub-Division).	(2 nominated)
15. Nadia ..	20	15 (39·1)	5 (60·2)
16. Burdwan ..	16	14 (78·0)	2 (18·5)
17. Murshidabad	15	7 (45·1)	8 (53·6)
18. Faridpur ..	20	8 (36·3)	12 (63·5)
19. Malda ..	15	8 (40·6)	7 (51·6)

(Election failed all nominated)

20. Howrah ..	12	10 (79·3)	2 (20·3)
21. Beerbhum ..	16	15 (68·1)	1 (?) (25·1)
22. Bankura ..	10	9 (86·3)	1 (4·6)
23. Jessore ..	16	1 (38·2)	15 (61·7)
24. Dacca ..	22	16 (34·2)	6 (65·4)
25. Chittagong ..	20	Nil (22·6)	20 (72·8)
26. Dinajpur ..	18	4 (44·1)	14 (49·1)

*N. B.*—The figures given in brackets are ratios to the total population.

---