

Khadi and Village
Industries Commission

A HAND-BOOK

Published by

KHADI AND VILLAGE INDUSTRIES COMMISSION
POST BOX 482, BOMBAY-1

Khadi and Village
Industries Commission

A HAND-BOOK

Published by
KHADI AND VILLAGE INDUSTRIES COMMISSION
POST BOX 482, BOMBAY-1

CONTENTS

Chapter	Page
Preface	
Introduction	i
I Khadi And Village Industries Commission	4
II The Central Organisation	13
III The Head Office	25
IV Industries And Schemes	
1. Khadi Schemes	30
2. Ambar Charkha Programme	44
3. The Intensive Area Scheme	51
4. Bee-keeping Industry	62
5. Cottage Match Industry	66
6. Village Pottery Industry	70
7. Non-Edible Oils And Soap Industry	79
8. Village Leather Industry	86
9. Village Oil Industry	92
10. Handmade Paper Industry	102
11. Gur And Khandsari Industry	110
12. Palm Gur Industry	114
13. Handpounding Of Rice	120
14. Fibre Industry	125
Charts	

PREFACE

For a Handbook only a short preface is necessary, since the object of such a publication is mainly to place a factual account before readers. Now that it is nearly five years since the All India Khadi and Village Industries Board was created it is not inappropriate to present in one volume information relating to the new organisational set-up that the Board and its successor, the Khadi and Village Industries Commission represent. The structure of the organisation and the manner in which it functions are both described in this volume at some length.

Next comes a summary of the programme that the Commission has been called upon to execute. That programme is a comprehensive one, and extends to over a dozen village industries. The principal agency for working out the programme is an industrial co-operative society or a quasi-philanthropic body registered as a charitable society. Aids of different forms such as those set forth in the following pages are extended to these bodies. A uniform pattern of such aids has been devised and institutions are expected to conform to this pattern. They are also called upon to utilize the funds placed at their disposal economically and productively.

The ideological background of this movement as much as its economic significance merit greater public attention than

has been vouchsafed to it since its originator and greatest protagonist, Mahatma Gandhi, was lost to the nation. But in the present volume no attempt has been made to treat of the economic or social implications of the Khadi and Village Industries movement. That the movement has assumed a wholly practical aspect will, however, be evident from a perusal of this Handbook. That the movement is no fantasy or fad, but is a definite and growing programme of useful productive effort can be seen even by those who may not subscribe to the basic tenets.

Bombay, 17th November, 1957.

—Vaikunth L. Mehta

INTRODUCTION

The Khadi and Village Industries Commission, like its predecessor, the All India Khadi and Village Industries Board, from which it took over its executive functions, operates through about 520 institutions with more than 2,000 centres formerly attached to the All India Spinners' Association, and co-operative and other registered bodies and has adopted the same *modus operandi*. For the implementation of its various development schemes, for example, the All India Board extended direct financial assistance to State Boards where they are statutory and to the Governments in States where the Boards are only advisory. This is now being done by the Commission. The Advisory State Boards, however, have a hand in determining the size of the programme they undertake in their area as well as the agencies through which the schemes are to be implemented. On their advice, the All India Board used to forward its own recommendations to the Union Government for grant of funds to State Governments. With the establishment of the Khadi and Village Industries Commission, a change in this procedure has taken place. Now the Commission examines these schemes and allocates funds to State Governments. This is, however, done only where Statutory Boards do not exist.

In the determination of the size of the programme as well as in the choice of the executive local or district agency, the advice and guidance of the Zonal Directors of the Commission and of the Individual Industry Organizers is available to the Commission as also to State Boards. In other words, the existing organisational machinery provides for mutual consultation in determining the size of the various development schemes in the States as a whole and in deciding the allocation to the institutional agencies operating in their respective areas.

The registered institutions recognised by the erstwhile All India Khadi and Village Industries Board, are recognised by the Commission. Most of these are composite units which are simultaneously in charge of all the village industries, inclusive of Khadi, and the bulk of them maintain smaller agencies at the taluk and village levels. Their intimate contact with the scattered artisans in the villages covered by them makes for appropriate adjustments in the volume of assistance required. Thus, whether the Commission operates directly through the recognised institutions or through the Statutory State Boards, or Co-operative Societies, extension of assistance to the State and from it to the district and village level is effectively possible.

The organisational set-up of the Commission today covers directly and indirectly, through the recognised institutions, an area of about 20,000 villages all over the country. During the Second Plan, its field-experimental intensive area scheme may directly bring within the direct purview of the Commission an additional 66,000 villages all over the country. The Bhoodan areas which are all pledged to promote Khadi and Village Industries as part of their drive for economic and social uplift of their respective population and which are likely to undertake the implementation of some of the Commission's programmes, may effectively and intensively cover a sizable rural area and population.

Besides these areas of special intensive development, established social service agencies experienced in this type of work such as the Sarva Seva Sangh, Gandhi Smarak Nidhi, Kasturba Smarak Nidhi and Harijan Sevak Sangh, can also be persuaded to take over the responsibility for implementing the Commission's development schemes so that the area covered will also be as extensive as organisationally possible.

Above all, the Commission has established working arrangements with the C. P. Organisation to ensure the development

of Khadi and Village Industries in the areas covered by it. The arrangements are that the Commission will directly train the Block Level Extension Officers, arrange for the training of Village Level Workers and guide and assist field workers in the C. P. A. areas directly through its Zonal Directors and Industry Organisers and indirectly through its local agencies. With a view to cause the least possible delay in the effective utilisation of funds for development of Khadi and Village Industries in Community Project Areas, funds for schemes which have already been approved may be given direct to the State Development Commissioners for implementing the schemes which are to be worked in the Community Project Areas.

At the end of this booklet three charts are included. Chart I presents the Organisation of the Head Office of the Commission, while Chart II gives an Idea of the field organisation in the Village Industries Sector. Chart III is for the Khadi Organisation - Traditional and Ambar.

CHAPTER I

KHADI AND VILLAGE INDUSTRIES COMMISSION

The Government of India, under an Act of Parliament (Act 61 of 1956), established the Khadi and Village Industries Commission for the development of Khadi and Village Industries in the country.

The Act confers on the Commission fairly comprehensive powers which will enable it to work on a very satisfactory basis in the direction of planning and implementing various schemes for Khadi and village industries. A Khadi and Village Industries Board has also been constituted for advising the Commission generally in the discharge of its duties. The Act provides for the appointment of a Financial Adviser to the Commission. The "Statement of Objects and Reasons" appended to the Khadi and Village Industries Commission Act says :

Statement Of Objects And Reasons

"With a view to promoting and developing Khadi and Village Industries, the Central Government constituted a Board called the All India Khadi and Village Industries Board and vested it with powers to prepare and organise programmes for the production and development of Khadi and Village Industries and to deal with other matters incidental thereto. It has, however, been found in actual practice that the work of the Board has been hampered by certain procedural and financial difficulties, difficulties which would be removed if a Commission were set up by law. It is, therefore, proposed to set up a Commission called the Khadi and Village Industries Commission. The Act also provides for the Khadi and Village Industries Board functioning as an advisory body which will advise the Commission

generally in the discharge of all its duties.”

The following provisions in the Act specify the functions, powers and obligations of the Commission.

Functions Of The Commission

Clause 15 (1): The functions of the Commission shall generally be to plan, organise and implement programmes for the development of Khadi and Village Industries.

(2) In particular and without prejudice to the generality of the foregoing power, the Commission may take such steps as it may think fit :

- a. to plan and organise the training of persons engaged in the production of khadi or in village industries;
- b. to build up a reserve of raw materials and implements and to supply them to persons engaged in the production of khadi or in village industries at such economical rates as may be suitable in the opinion of the Commission;
- c. to provide for the sale and marketing of khadi or of products of village industries;
- d. to encourage and promote research in the technique of production of khadi or in the development of village industries, or to provide facilities for a study of the problems relating to khadi or village industries;
- e. to maintain or assist in the maintenance of institutions for the development of khadi or village industries;
- f. to undertake, assist or encourage the production of khadi or the development of village industries;
- g. to promote and encourage co-operative efforts among manufacturers of khadi and persons engaged in village

industries;

- h. for ensuring the genuineness of, and for granting certificates to producers of, or dealers in, khadi or the products of any village industry;
- i. to carry out any other matter which may be prescribed.

Powers Of Central Government

Clause 16: In the discharge of its functions under this Act, the Commission shall be bound by such directions as the Central Government may give to it.

Finance, Accounts, Audit And Reports

Clause 17: The Central Government may, after due appropriation made by Parliament by law in this behalf, pay to the Commission in each financial year such sums as may be considered necessary for the performance of the functions of the Commission.

Clause 18: (1) The Commission shall have two separate funds to be called the Khadi Fund and Village Industries Fund and all grants and advances made to the funds, from time to time, by the Central Government for the purpose of development of khadi or the development of village industries shall be credited to the Khadi Fund or Village Industries Fund, as the case may be, and all payment by the Commission for or in respect of khadi or village industries shall be made from the appropriate fund.

(2) Except as otherwise directed by the Central Government, all money belonging to such funds shall be deposited in the Reserve Bank of India or with the agents of the Reserve Bank of India, or where there is neither an office of the Reserve Bank of India, or an agent of the Reserve Bank of India, in Government Treasury, or be invested in such securities as may be approved by the Central Government.

Powers Of The Commission

Clause 19 : Subject to the provisions of Section 20, the Commission shall have power to spend such sums as it thinks fit on purposes authorised by this Act :

Provided that nothing in this section shall be deemed to prevent the Commission from spending, with the previous approval of the Central Government, such moneys as it thinks fit on any such purpose outside the territories to which this Act extends.

Clause 20 : (1) The Commission shall, by such date in each year as may be prescribed, prepare and submit to the Central Government for approval two separate budgets in the prescribed form for the next financial year, to be called the Khadi Budget and the Village Industries Budget, showing the estimated receipts and expenditure in respect of khadi and village industries respectively during that financial year.

(2) Subject to the provisions of sub-section (3) and (4) no sum shall be expended by or on behalf of the Commission unless the expenditure is covered by a specific provision in the Budget approved by the Central Government.

(3) The Commission may within the respective limits of the Khadi Budget and the Village Industries Budget, sanction any reappropriation from one head of expenditure to another or from a provision made for one scheme to that in respect of another, but in no case shall a reappropriation of funds be made from the Khadi Budget to the Village Industries Budget or from the Village Industries Budget to the Khadi Budget :

Provided that no reappropriation from the held 'Loan' to any other head of expenditure and vice-versa in either budget shall be sanctioned by the Commission except with the previous approval of the Central Government.

(4) The Commission may, within such limits and subject to such conditions as may be prescribed, incur expenditure in excess of the limit provided in the budget approved by the Central Government under any head of expenditure or in connection with any particular scheme, so long as the aggregate amount in either budget approved by the Central Government is not exceeded.

Borrowing Of Money

Clause 21 : Subject to such rules as may be made in this behalf, the Commission shall have power to borrow on the security of the Khadi Fund or the Village Industries Fund or any other asset for any purposes for which such funds may be applied.

Returns And Reports

Clause 24 : (1) The Commission shall furnish to the Central Government at such time and in such form and manner as may be prescribed or as the Central Government may direct, such returns and statements and such particulars in regard to any proposed or existing programme for the promotion and development of khadi and village industries, as the Central Government may, from time to time, require.

(2) Without prejudice to the provisions of sub-section (1), the Commission shall, as soon as possible after the end of each financial year, submit to the Central Government a report in such form and before such date as may be prescribed, giving a true and full account of its activities, policy and programme during the previous financial year.

(3) A copy of the report received under sub-section (2) shall be laid before each House of Parliament.

The Schedule

(See Sections 2 (h) and 3 (l))

1. Bee-keeping.
2. Cottage Match Industry.
3. Cottage Pottery Industry.
4. Cottage Soap Industry.
5. Flaying, curing and tanning of hides and skins and ancillary industries connected with the same and cottage leather industry
6. Ghani Oil Industry.
7. Hand-made Paper.
8. Manufacture of Cane—gur and Khandsari.
9. Palm—Gur making and other palm—products industry.
10. Processing of cereals and pulses.
11. Fibre (other than coir), and
12. Blacksmithy and carpentry (manufacturing and servicing not involving the use of power; power may be used in the case of manufacture of Ambar Charkhas and their accessories.)

3 (l) The Central Government may, of its own motion or on the recommendation of the Commission, declare, by notification in the official Gazette, any other industry to be a village industry to which this Act applies, and thereupon the industry so declared shall be deemed to be an industry specified in the Schedule for the purposes of this Act.

The following are the the Members of the Commission:

1. Shri Vaikunth L. Mehta (Chairman),
2. Shri Pranal S. Kapadia (Secretary),
3. Shri R. Srinivasan,
4. Shri Shriman Narayan,
5. Shri Dwarkanath V. Lele.

The members of the re-constituted Khadi and Village Industries Board are:

1. Shri Vaikunth L. Mehta (Chairman).
2. „ Dhwaja Prasad Sahu.
3. „ Dwarkanath V. Lele.
4. „ G. Venkatachalapathy.
5. „ Jhaverbhai Patel.
6. „ Raojibhai N. Patel.
7. „ Satish Chandra Das Gupta.
8. „ Vichitra Narayan Sharma.
9. „ V. V. Jerajani.
10. Smt. K. P. Madhavan Nair.
11. Shri A. P. Choudhri.
12. „ Shriman Narayan.
13. „ M. Somappa.
14. „ Pranlal S. Kapadia.
15. „ R. Srinivasan.
16. „ Chhaganlal N. Joshi.
17. „ R. S. Hukkerikar.
18. „ S. R. Nagappa Chetty.
19. Dr. Gopichand Bhargava.
20. Shri T. S. Gokhale and
21. „ A. Chidambara Reddy.

The following Industries come under the purview of the Commission and are included in the Schedule to the Commission Act :

1. Khadi (Cotton, Woollen and Silk).
2. Handpounding of Rice Industry.
3. Atta Chakki.
4. Village Oil Industry.
5. Hand-made Paper Industry.

6. Gur and Khandsari Industry.
7. Palm-Gur Industry.
8. Non-Edible Oils and Soaps.
9. Village Leather Industry.
10. Cottage Match Industry.
11. Bee-keeping Industry.
12. Village Pottery.
13. Fibre (other than coir), and
14. Blacksmithy and carpentry (manufacturing and servicing not involving the use of power; power may be used in the case of manufacture of Ambar Charkhas and their accessories.)

For each of these industries, excepting Blacksmithy, the Commission has an Industrial Organiser who is responsible for the preparation of the expenditure proposals of the programme under his charge, planning for the requisite organisation for its undertaking and execution thereof. In the matter of the planning and execution of the programmes of Khadi and Village Industries mentioned here, the expert advice and guidance of some of the members of the Commission and of the Board are available. Some of these members devote their full time and attention to their subjects as shown below :

- | | |
|----------------------------|--|
| 1. Shri V. V. Jerajani | Hundi Scheme, Exhibitions, Emporia and Marketing. |
| 2. Shri S. C. Das Gupta | Cottage Match Schemes and Research Institute work. |
| 3. Shri Raojibhai N. Patel | Handpounding of Rice and Atta Chakki Schemes. |
| 4. Shri Jhaverbhai Patel | Intensive Area Scheme and Village Oil Scheme. |
| 5. Shri Dwarkanath Lele | Khadi Schemes. |

The Industrial Organisers are drawn from among those who have specialised and practical knowledge of the techniques and

tools employed in the industries and have considerable experience in the field. They tour the country, study the condition of their respective industries and their location and suggest schemes of development to the Commission. They assist artisans to form their own co-operatives. In addition, they supervise and direct the working of the schemes which are ordinarily allotted to specialised agencies with experience in organising and executing them. The industrial organisers are assisted by technical, ministerial and field staff. The schemes submitted by them are examined by the Standing Finance Committee (Village Industries) of the Commission before they are finalised and budgets of expenditure prepared. These expenditure proposals are then approved by the Commission.

They set up model centres which serve as demonstration-cum-production-cum-training centres. In these centres improved techniques, tools and methods of operation are introduced with a view to encouraging artisans in the neighbouring areas to adopt them. They assist in securing for the industry or industries concerned better conditions of work and wages and in other ways to create the climate for the rehabilitation and development of the industries by purveying information about the schemes of the Commission and about the assistance - technical, financial and others - which it offers. They organise conferences from time to time and encourage the artisans to hold healthy competitions and to participate in local, regional and/or national exhibitions. These Industrial Organisers also assist and advise the artisans in marketing their products. They are, in fact, contact men *par excellence* and convey to the artisans some idea of what the State and the Commission are doing to help them to help themselves.

These Organisers are required to submit periodical reports about the state of their respective industries and the progress of the schemes.

CHAPTER II

THE CENTRAL ORGANISATION

The Central Organisation of the Commission may be said to consist of the Commission itself and the Khadi and Village Industries Board whose resolutions generally guide the Commission's decisions. The Commission has set up several Committees, e.g., two Standing Finance Committees for Khadi and for Village Industries, Standing Training Committee and the Technical Research Institute Committee. Besides, there are several Ad Hoc Committees which advise the Commission on organisational and policy matters pertaining to various aspects of its schemes. In the Central Organisation is the Commission's Financial Adviser. The Chart of the Chief Executive Officer's organisation at the Headquarters and in the Field will make it clear that some of the principal Directorates are those of Economic Research, Publicity, Training, Co-ordination and of Village Industries and Co-operation. Other administrative branches/sections are :

- Establishment Section,
- Budget Section,
- Co-ordination Section,
- Accounts Branch,
- Audit Branch,
- C. P. A. Section,
- Village Industries Section, and
- Zonal Directorates.

The Administrative Officer looks after the Establishment and Coordination matters, while the Director of Village Industries and Cooperation deals with all matters relating to Village

Industries. The Commission meets ordinarily once every month and the Board once every two months. At its meetings, the Commission reviews the progress of its schemes and discusses reports on establishment matters, financial problems and allocations recommended by the Standing Finance Committees, policy questions and recommendations of the Khadi and Village Industries Board and, where necessary, issue directive

Standing Finance Committee (Khadi)

The Committee consists of :

- | | |
|----------------------------|-------------|
| 1. Shri Vaikunth. L. Mehta | — Chairman. |
| 2. Shri R. Srinivasan | — Member. |
| 3. Shri P. S. Kapadia | — Member. |
| 4. Shri D. V. Lele | — Member. |
| 5. Shri K. T. Satarawala | — Member. |

Its functions are :

- a. To examine expenditure proposals regarding all schemes relating to the Khadi Fund; to advise the Commission regarding them and to examine proposals, if any, for the introduction of new items in the approved programme and/or change or modifications in the existing patterns.
- b. To examine proposals relating to the Khadi Fund for grants, subsidies or loans and sanction funds (grants, subsidies and loans) against such proposals, if they are in accordance with the schemes sanctioned by the Commission in their detailed expenditure proposals. They will refer the cases to the Commission if the amount of any individual proposal exceeds Rs. 5 (five) lakhs.

Standing Finance Committee

(Village Industries)

The members of this Committee are :

1. Shri V. L. Mehta.
2. Shri R. Srinivasan.
3. Shri P. S. Kapadia.
4. Shri D. V. Lele.
5. Shri K. T. Satarawala.

The functions of the Committee are as under :

- a. To examine expenditure proposals regarding all schemes relating to the Village Industries Fund ; to advise the Commission regarding them and to examine proposals, if any, for the introduction of new items in the approved programme and/or change or modifications in the existing patterns.
- b. To examine proposals relating to the Village Industries Fund for grants, subsidies or loans, and sanction funds (grants, subsidies and loans) against such proposals if they are in accordance with the schemes sanctioned by the Commission in their detailed expenditure proposals. They will refer the cases to the Commission if the amount of any individual proposal exceeds Rs. 2 (two) lakhs.

Training Committee

The members of the Committee are :

- | | |
|-------------------------|-----------|
| 1. Shri R. S. Dhotre | Chairman. |
| 2. Shri Maganbhai Desai | Member. |
| 3. Shri H. G. Patil | Member. |
| 4. Shri A. D. Bohra | Member. |
| 5. Shri S. K. Kallapur | Member. |

6. Shri A. Natarajan	Member.
7. Shri D. V. Lele	Member.
8. Shri Krishnadas Gandhi	Member.
9. Shri Devendrakumar Gupta	Member.
10. Shri G. Ramachandran	Member.
11. Shri T. B. Bhatt	Member.
12. Shri K. G. Deodhar	Member.
13. Shrimati Kamalatai D. Lele	Member.
14. Shri R. S. Hukkerikar	Member.
15. Shri Shriman Narayan.	Member.

The Director of Training will act as the Secretary.

The functions of the Committee are as under :

1. To examine proposals for the organisation of training in respect of industries falling within the purview of the Commission.
2. To advise the Commission about the location of Training Institutions.
3. To advise the Commission regarding the qualifications of the staff of the Training Institutions.
4. To examine the syllabi for various courses proposed to be started at different Training Institutions.

The Training Programme of the Commission consists of :

- i. Training of Instructors and Organisers ;
- ii. Training of Village Artisans.

The Commission also offers facilities to train Extension Officers (Industries) of the C. P. A., as well as Instructors for the Village Level Workers in Community Project Areas.

Four types of training courses have been devised. They are :

1. Long term comprehensive training courses, for Organisers, Instructors and Extension Officers (Cottage Industries), C. P. A. at the Khadi-Gramodyog Mahavidyalayas.

2. Short term intensive training courses for Technical Assistants and Craft Teachers in Khadi and Village Industries at the Regional Khadi Gramodyog Vidyalayas.
3. Intensive specialised courses in individual village Industries for the supervisory staff at the production centres.
4. Periodical refresher courses for groups of workers and artisans to acquaint them with the latest results of research and experiments so as to enable them to remodel their field activities in accordance with the ascertained experience.

(The details regarding the number of Training Institutions and centres for Khadi and other Village Industries, their location, duration of courses, qualifications for admission, the number of seats, stipends paid to the trainees etc., are given in 'Training in Khadi and Village Industries' which is available on payment of Re. 0-4-0 or Re. 0.25 postage extra.)

Ambar Training

Separate training facilities exist for the Ambar Charkha Programme and these are administered by the Sanchalak for Ambar Training with his Headquarters at Nasik (Bombay State).

Training in Ambar Charkha comes under three categories, namely :

- (1) Training of Ambar Karyakartas,
- (2) Training of Ambar Mistries, and
- (3) Training of Ambar Spinners.

Ambar Karyakartas are trained in Ambar Vidyalayas which have trained teaching staff. The training is ordinarily given to candidates sponsored by recognised institutions and/or

State Khadi and Village Industries Boards. The training of instructors for Ambar Vidyalayas is given in the Khadi and Village Industries Commission's Central Ambar Charkha Shiksha Vibhag at Nasik.

There are two courses, namely :

1. Ambar Charkha Karyakarta Course, and
2. Ambar Mistri Course.

At a time, fifty candidates will be admitted for training. There will be two terms in each Ambar Vidyalaya and each Vidyalaya will train 100 persons in a year.

Ambar Karyakarta Course : The course is of six months. During the period of training, a stipend of Rs. 40 per month is given per trainee admitted to a Vidyalaya for Ambar Karyakarta Course. To meet the training expenses, a tuition fee of Rs. 25 per trainee is given to the Vidyalaya. Each Vidyalaya is also given an advance of Rs. 7,000 to equip the Vidyalaya with the required number of Ambar Charkha sets and their parts and with the necessary tools.

Ambar Mistri Course : The course is of three months. The stipend in the Ambar Mistri Course is Rs. 75 per month per mistri trainee. A trainee, on selection for Ambar Mistri Course, is also given his actual travelling expenses, to and fro, which will be equal to the actual third class train or bus fare as the case may be. The Vidyalaya, as in the previous case, is given Rs. 25 as tuition fee for each trainee admitted. Vidyalayas are ordinarily allotted to recognised institutions and/or State Khadi and Village Industries Boards on the condition that:

1. at least 10 Farishramalayas will be set up for each

Vidyalaya;

2. the institution or the State Board is already engaged in Khadi production work and/or has facilities to organise production of Khadi under its control and has secured a certificate from the Certification Committee of the Khadi and Village Industries Commission, for this purpose;
3. will undertake to market the Khadi produced at its centres locally or within the region to the maximum extent possible;
4. will set up a Saranjam Karyalaya for production, assembly, servicing and repairs of Ambar Charkha sets.

Syllabus and other details of training will be available on application from the Central Ambar Charkha Shiksha Vibhag, Tulsi Bhavan, Panchavati, Nasik.

The Vidyalaya which imparts training in the Ambar Mistri Course, should have its own Saranjam Karyalaya with stocks of :

1. Dhunai implements (carding bow, slivering set)
2. Dhunai Modhia (complete)
3. Vertical or Horizontal Charkhas,
4. Ambar Charkhas,
5. Ambar Belnis,
6. Instruments for preparing spindles.

Other implements necessary are :

1. 4 ft. lathe,
2. Wood-turning lathe,
3. 1/2" power drilling machine,
4. 12" Emery with two stones,
5. 6" circular saw,
6. other carpentry implements and machines.

The minimum qualification for the Ambar Karyakarta Course is that the candidate would have ordinarily passed the

matriculation examination. The qualification for the Ambar Mistri Course is that the candidate seeking admission should be proficient in carpentry and must be prepared, before admission, to submit to any test that may be prescribed.

Parishramalayas

Ambar Spinners are trained in numerous Parishramalayas distributed all over the country. The period of training in the Parishramalaya is three months. Each Parishramalaya must have 50 Ambar Charkha sets and will train at the rate of 2 persons to an Ambar set. Thus 100 persons will be trained in a term in a Parishramalaya. There will be four such terms in a year. Allotment of staff to the Parishramalaya is on the basis of one instructor for every 10 spinners. Admission of spinners for training is restricted ordinarily to those who, after the training, agree to purchase the Ambar Charkha set on an instalment basis from the institution to which the Parishramalaya is attached and undertake to produce a minimum of 1,500 hanks of yarn a year.

Price Of Charkha Set

The price at which the Ambar Charkha sets will be supplied to the trained spinner will be about Rs. 120 per set. This amount will be recovered by the institution to which the Parishramalaya is attached in easy instalments. No subsidy on the Ambar set will be given except in deserving cases and that, too, only after a period of time during which the spinner has shown improvement in his production and has satisfied the authorities that he is a regular spinner and has paid the instalments due from him till then. The subsidy in such cases will not exceed 50 per cent of the cost of the Ambar Charkha set.

To run a Parishramalaya efficiently, it must have the appropriate number of Ambar Charkha sets, stocks of their spare parts and efficient instructors. The Khadi and Village Industries

Commission advances Rs. 6,700 for each Parishramalaya for Charkha sets and equipment which will be the property of the Commission and the institution to which the Parishramalaya is attached is responsible for the maintenance of these assets in good repair. For meeting the expenditure involved in training, a tuition fee at the rate of Rs. 15 per month per trainee admitted to the Parishramalaya will also be paid to the institution concerned.

Progress Chart

Each Parishramalaya will maintain records of daily work of each trainee in the prescribed forms, available from the Central Ambar Shiksha Vibhag at Nasik. The following suggestions are made for the guidance of the Parishramalaya in the assessment of a trainee's progress :

1. At the end of the *first* week of training, that is, on the sixth day, a trainee should be able to spin 2 hanks of 20 counts yarn in eight hours - from lint to yarn.
2. At the end of the *second* week, that is, on the 12th day of training, a trainee should be able to spin 2 hanks of 20 counts yarn in 6 hours - from lint to yarn. The remaining 2 hours will be utilised by the trainee to repair, adjust and service the Ambar set.
3. At the end of the *third* week, that is, on the 18th day of training, a trainee should be able to spin 2 hanks of 20 counts yarn in 4 hours 45 minutes - from lint to yarn. The remaining period of 4 hours should be utilised for practice.
4. At the end of the *fourth* week, that is, on the 24th day of training, a trainee should be able to spin 2 hanks of 20 counts yarn in 2 hours - from lint to yarn. The remaining 6 hours will be utilised by the trainee to

practise production at this rate.

5. At the end of the *fifth* week, that is, on the 30th day of training, a trainee should be able to spin 4 hanks of 20 counts yarn in 4 hours – from lint to yarn. The remaining 4 hours will be utilised by the trainee to practise production at this rate.
6. At the end of the *sixth* week, that is, on the 36th day of training, a trainee should be able to spin 8 hanks of 20 counts yarn in 8 hours – from lint to yarn.

During the remaining six weeks of training the trainee should be asked to practise spinning at the rate attained at the end of the sixth week of training.

In addition to these recordings, each trainee has to keep an account of the number of breakages occurring during spinning. The object is to ensure that there is no breakage of yarn at all during spinning. This object can be attained if, before beginning the operations, the cotton is properly cleaned, carded and slivered.

Where a Parishramalaya is so located that trainees have to come from long distances for training, a Parishramalaya may, for conveniences of training, be split into Sub-Parishramalayas. Before the splitting up of a Parishramalaya into Sub-Parishramalayas, care should be taken to see that adequate training personnel and other facilities are provided.

Production Of Khadi

For the Parishramalayas and for production of Khadi from the yarn produced by those who have been trained in the Parishramalayas, adequate arrangements must be made by the institution to which the Parishramalayas are attached. There is, therefore, need to stock adequate quantities of cotton of good quality and of the appropriate staple length suitable for the count or counts

of yarn that will be produced. There should also be adequate arrangements for weaving in the proportion of 1 loom to 3 Ambar sets.

Research Institute Committee

This Committee consists of :

1. Shri S. C. Das Gupta	Chairman.
2. Shri Jhaverbhai Patel	Member.
3. Shri Bharatananda	Member.
4. Shri B. R. Ramaswamy	Member.
5. Shri C. J. Soneji	Member.
6. Shri D. Padmanabhan	Member.
7. Dr. S. D. Mahant	Member.
8. Shri J. N. Mukherji	Member.

The Deputy Director of the Research Institute will act as the Secretary.

The Headquarters of the Committee are at Maganwadi, Wardha. The functions of the Committee will be as under:

- i. To examine all schemes proposed by the Research Institute before they are placed before the Commission for approval and to advise the Commission about the schemes, suggesting additions and alterations, where necessary.
- ii. To scrutinise six monthly and annual progress reports of the different schemes of the Research Institute and send them to the Commission with its comments.
- iii. To give technical advice to the Commission regarding matters which would be referred to it for advice in regard to research work.
- iv. To recommend priorities for various research schemes which may be referred to the Research Institute and to recommend them to the Commission.

Khadi and Village Industries Economics Committee

The members of the Committee are :

1. Shri V. L. Mehta	Chairman.
2. Shri S. C. Das Gupta	Member.
3. Shri M. L. Dantwala	Member.
4. Shri C. P. Parikh	Member.
5. Shri Jhaverbhai Patel	Member.
6. Shri Shriman Narayan	Member.
7. Shri P. H. Patwardhan	Member.
8. Prof. D. G. Karve	Member.

The Director of Economic Research will act as the Secretary.

The functions of the Committee will be as under :

“To examine the economic aspects of the progress of different Village Industries including Khadi organised by the Commission and to advise the Commission regarding specific economic problems referred to it.”

CHAPTER III

THE HEAD OFFICE

The Head Office of the Commission is located in Bombay. The administrative head is the Chief Executive Officer whose functions are :

- i. to coordinate, supervise and control the work of Officers and establishments of the Commission.
- ii. to implement decisions taken by the Commission.
- iii. to frame annual budget estimates and supplementary budget estimates in consultation with the Financial Adviser, for the work of the Commission, for being placed before the Commission.
- iv. to administer the contributory provident fund of the Commission; when established.
- v. to sanction contingent expenditure, to the extent of powers delegated to him, by the Commission from time to time.
- vi. to examine applications for assistance (both grants and loans) and place them before the Commission for sanction; and
- vii. he will, besides, undertake such other duties and exercise such other powers as may be delegated to him by the Commission or the Chairman, from time to time.

For the administration of the finances of the Commission it is advised by the Financial Adviser.

Directorate Of Economic Research

The Director of Economic Research who is the head of the Department, is assisted by Research Officers, Senior and Junior Investigators. The Section undertakes, under the direction of the Director, Field Surveys and Investigations as well as Evaluation of the progress of schemes and undertakes studies on specific problems referred to it.

Directorate Of Publicity

The Director of Publicity is in charge of all the publicity and propaganda work of the Commission and generally acts under the direction of the Chairman of the Commission. An Editorial Board scrutinizes manuscripts and approves of publications. The Editorial Board consists of:

1. Shri D. V. Lele
2. Shri R. Srinivasan
3. Shri R. K. Pradhu
4. Shri M. V. Desai
5. Dr. J. D. Sundram, Director of Economic Research, and
6. Shri C. K. Narayanswami, Director of Publicity
(Convenor)

The Commission publishes two monthly and one weekly journals. These are :

1. Khadi-Gramodyog,
2. Tad Gud Samachar, and
3. Jagriti (weekly)

These are published in English and in Hindi. The Tad-Gud Samachar is published in Tamil also. The annual subscription of the monthly journals is Rs. 2.50 and Rs. 3.00 respectively and that of the weekly, Rs. 6.00.

Besides these journals, the Directorate of Publicity publishes, from time to time, pamphlets, books, and tracts dealing with Khadi and Village Industries.

Directorate Of Sales Development

The function of this Directorate is the organisation of marketing of Khadi and products of other village industries, to carry out market studies in consumer preferences and advise on production of types and sorts most in demand. It undertakes organisation of exhibitions, emporia, training in salesmanship, revival of arts and traditional designs and promotion of the art of fine yarn spinning. Through the efforts of the erstwhile Board, emporia for the display and sale of Khadi and village industries products, have been started in the country. The largest of these is the Khadi Gramodyog Bhavan in Bombay which is managed for the Commission by the Bombay Suburban District Village Industries Association. The Emporia in Delhi, Calcutta and Madras are directly managed by the Commission. In Patna and Rajkot, the State Governments have established similar emporia. Arrangements are under way to organise emporium in Bangalore. Besides these, there are numerous certified Khadi Bhandars all over the country which market Khadi and other articles of village industries.

Directorate Of Village Industries And Co-operation

The Directorate effects co-ordination of efforts in the field of village industries, their organisation and production. It also examines schemes prepared by the Industrial Organisers.

The Commission attaches great importance to organisation of artisans in industrial co-operatives in the countryside. In order to advise the Commission on the co-operative aspect of organisation of production and sales, an Advisory Committee consisting of the following members has been constituted :

- | | |
|--------------------------|-----------|
| 1. Shri D. A. Shah | Chairman. |
| 2. Shri B. M. Chitnis | Member. |
| 3. Shri Jhaverbhai Patel | Member. |

- | | |
|-----------------------------|---------|
| 4. Shri J. C. Ryan | Member. |
| 5. Shri Raj Krishna | Member. |
| 6. Shri P. M. Mathai | Member. |
| 7. Shri C. M. Goyal | Member. |
| 8. Shri K. A. Venktaramaiah | Member. |

The Director (Village Industries and Co-operation) acts as Secretary.

The functions of the Committee are as under :

To advise the Commission regarding all matters pertaining to the organisation and financing of co-operative societies for various Village Industries.

Certification Committee

Though Khadi is defined as cloth handspun and hand-woven, it has been the practice to certify the product as genuine by a competent authority. So long as the All India Spinners' Association was in over-all charge of Khadi production and sales in the country, it certified the Institutions and production and/or sales centres, etc. Khadi marketed through these centres and Institutions alone was accepted as genuine Khadi. Since the erstwhile All India Khadi and Village Industries Board took over the functions of the All India Spinners' Association, it constituted a Certification Committee consisting of the following members :

- | | |
|----------------------------------|-------------|
| 1. Shri Vichitra Narayan Sharma, | (Chairman). |
| 2. Shri Dwarkanath Lele, | Member. |
| 3. Shri N. R. Sowaney, | Member. |
| 4. Shri K. Narayan Rao, | Member. |
| 5. Shri Bhimsen Vedalankar, | Member. |
| 6. Shri Dhwaaja Prasad Sahu, | Member, |

The Committee which functions under the Commission now, is empowered to issue certificates regarding the genuineness of Khadi and other products of village industries in the prescribed manner. The Headquarters of the Committee are at Lalbagh, Lucknow. There are at present about 569 certified institutions in the country engaged in Khadi work. Of these, about 209 are Co-operative Societies and 17 are institutions sponsored by State Governments. These institutions carry on their activities through more than 2,000 centres spread over in all parts of the country. Besides these, there are about 903 certified Khadi sales agencies which sell Khadi on a small scale.

CHAPTER IV

INDUSTRIES AND SCHEMES

The schemes for individual industries and the nature of the aids given by the Commission are given in the following pages :

KHADI SCHEMES

Although the main emphasis of the Commission's programme for production of Khadi is on its Ambar Charkha Programme, field experience has shown that the demand for the traditional Charkha continues and the Commission believes that the traditional Charkha will continue to ply in the country. Transition to the Ambar Yarn Khadi will be spread over a period of time. Till this transition is effected, certain principles and policies for a pool price of the two types of Khadi have been enunciated to be worked on a regional basis.* The schemes for the promotion of production and sales of traditional Khadi are briefly stated below :

Khadi (traditional) schemes of the Commission come under three main categories :

1. Individual self-sufficiency in Khadi : There are numerous men and women who spin their own yarn and get it woven. They use this cloth for their own use. They are known as Vastra Swavalambis. This scheme emphasizes self-production for self-consumption. The Khadi and Village Industries Commission encourages the people to be self-sufficient in cloth by meeting 75 per cent of the weaving charges or Re. 0.31 per square yard, whichever is less, and by giving Re. 0.12 per square yard of cloth woven, to institutions which get Swavalambi yarn woven. For the purposes of this scheme, only yarn above 7's counts will be admitted.

2. Regional self-sufficiency in Khadi : This is the

* "Transition to Ambar Yarn Khadi".

intensive scheme which seeks to make selected areas self-sufficient in cloth. These areas are included in the Commission's Intensive Area Schemes.

3. Commercial Khadi: This refers to production for sale on a commercial basis.

The schemes of the Commission for the promotion and expansion of Khadi production include :

1. Training of workers for efficient organisation of production on a commercial scale.

2. Purchase and stocking of raw materials on account of the certified institutions according to their annual requirements and supplying the same to them against payment as and when they need them.

3. Taking over their production and holding it on their account by advancing 60 per cent of the value, wherever necessary, to facilitate continuous production. The stocks will be released as and when they are needed for sale against payment of the value of stock lifted. This amount will be treated as part payment against the advanced amount.

4. Supply of improved implements to the workers. The Commission gives a subsidy to the extent of 50 per cent of the cost of approved implements. However, this subsidy is restricted to Rs. 2.50 or 50%, whichever is less, for traditional charkha.

Implements on which concessional rates are available include the following :

Ginning Implements

1. Hand Gin.
2. Opener.

Carding Implements

3. Carding box and its accessories (Gut, Beater, Sliver Rod, Board and Handle).
4. Carding Bow with set.
5. Pedal Carding Machine.
6. Dhunai Modhia.
7. Sliver Board, Rod and Handle.

Spinning Implements

8. Takli.
9. Winder for Takli.
10. Hanker for Charkha.
11. All types of spinning wheels (box, kisan, old vertical, horizontal and bamboo and any with 4 spindles excluding, Ambar Charkha and its parts).
12. Pedal spinning wheel for spinning silk waste.

Twisting Implements

13. Twisting Stand.
14. Dubate Pedal Machine.
15. Twisting Machine for Wool and Silk.

Reeling Implements

16. Drawing-in frame (Belni) (other than Ambar Belni).
17. Reeling Machine.

Looms And Other Weaving Accessories

18. Complete loom (with a sizing brush, healds, reeds, shuttle etc.).
19. Beam, Warp Bar, Handle or Handloom, Sley and Warping Board.
20. Sley.
21. Frames.
22. Reeds (Bamboo).
23. Take up motion (Level Roller Beams).
24. Sleys with cloth roller, warp beam.
25. Looms fitted with jacquards.
26. Cross Border Dobby.
27. Iron Reeds.
28. Varnished Healds,
29. Warping Frames (Type required by Saurashtra).

Peripatetic Parties of trained workers visit production centres and help them to introduce improved implements and instruct the workers in the new techniques. The workers are attached to the respective institutions while the payment of the workers is arranged from the Central Office.

5. Spinning Competitions on Local, Regional, State and All-India basis are organised for promoting proficiency in spinning.

Assistance given for these competitions is as under :

- a. **Local Competitions** for which a sum of Rs. 17 per competition is given. This amount is to be utilised for

4 prizes of Rs. 8, Rs. 5, Rs. 3 and Re. 1 each, according to the merit of the competitors.

- b. **Regional Competitions :** A grant of Rs. 100 per competition is given. This amount will be divided into 4 prizes of Rs. 40, Rs. 30, Rs. 20 and Rs. 10 each, according to merit.
- c. **State-Level Competitions :** A sum of Rs. 165 and 46.5 yards of Khadi at Rs. 1.50 per yard will be granted for such competitions. The amount and the cloth will be given away in 5 prizes of Rs. 50 and 12.5 yards of Khadi, Rs. 40 and 10 yards of Khadi, Rs. 35 and 8 yards of Khadi, Rs. 25 and 8 yards of Khadi and Rs. 15 and 8 yards of Khadi, according to merit.
- d. **All-India Competitions :** A sum of Rs. 475 and 50 yards of Khadi at Rs. 1.50 per yard will be given in each such competition. The amount and the cloth will be given away in 5 prizes of Rs. 125 and 10 yards of Khadi, Rs. 110 and 10 yards of Khadi, Rs. 95 and 10 yards of Khadi, Rs. 80 and 10 yards of Khadi and Rs. 65 and 10 yards of Khadi, according to merit.

In addition, the first three prize winners in the All-India Spinning Competitions will be awarded Gold, Silver and Bronze medals, according to the merit of the competitor. Other facilities offered are :

- T. A. at the actual third class fare by rail or the lowest class available by any other mode of conveyance, including tonga and bus.
- b. T. A. as specified in (a) above and incidental expenses @ Rs. 2 per day during the period of to and fro journey

will be paid to the following persons :

- i. Successful and qualifying contestants, both men and women.
- ii. Guardian accompanying a minor competitor (both successful and qualifying).
- iii. Guardian accompanying a woman competitor (both successful and qualifying).
- iv. Child below the age of five years accompanying a successful and qualifying married woman contestant. The child should be her own. The incidental expenses to such child shall be paid @ Re. 1 per day.

6. Spinning Classes in Jails : Prisoners are taught spinning to make them earn an honourable living on their release from jail. Implements and raw materials are provided by the State Governments while the Instructor is appointed by the Commission. The scheme is worked out in co-operation with the State Government. The jail authorities have been requested to furnish the names and addresses of such prisoners who have been spinning during the tenure of their imprisonment to the Commission's office at the time of their release. In return the Commission communicates these names to the certified institutions of the area of the residence of the released prisoner. The certified institutions approach the prisoner and enlist him as their spinner. Thus the released prisoner gets some work as soon as he is released.

7. Rehabilitation of weavers in areas where spinners are in abundance by giving a grant upto Rs. 500 per weaver family. The institution provides for residential accommodation and free land to weavers' families who have come from a distance of more than five miles. The grant is meant for purchasing a new loom, getting it fitted and for payment of wages which are lost by the weaver till the commencement of work at the new centre. If the

family possesses its own loom, payment is also made for its transport.

The aid offered is as under :

a. Cost of weaving equipments	Rs. 200
b. Charges for transportation of weaving equipments from their present place to spinning centres.	Rs. 100
c. Expenses for installing weaving equipments	Rs. 50
d. Wages to be given to weavers during the period of transit and re-establishment	Rs. 150
	Rs. 500

8. Production and Sale Subsidy : As an incentive to expansion of production, the Commission gives a subsidy of 3 naye paise per rupee on the value of total production. An additional subsidy of 3 naye paise in the rupee is given on a maximum production of Rs. 32,000 to institutions whose production shows at least a 10 per cent increase over the production of the previous year.

Along with the production of Khadi, organisation for its sales must also expand. In order to give incentive to the sales of Khadi, the Commission gives a sales subsidy at the rate of 3 naye paise in the rupee on retail sales. An additional subsidy at the rate of 3 naye paise in the rupee on a maximum of Rs. 32,000 is also given to organisations which show at least 10 per cent increase over the sales during the previous year.

9. Salesmanship Training : The Commission has arrangements to train Khadi Salesmen. Admission for training is ordinarily restricted to candidates sent up by recognised institutions. Each candidate is given a stipend of Rs. 60, actual travelling allowances and in addition, a tuition fee of Rs. 25. The period of training is two months.

10. Agency Sales Scheme : In order to effect larger sales of Khadi and to propagate it on a wide scale, sales agents and agencies are appointed. They will be paid the usual sales commission plus an honorarium on a sliding scale, as shown below :

Rate of Honorarium (Rs.)			
1. Khadi Sale upto	Rs. 100 per month		Nil
2. Khadi Sale between	Rs. 101 and	Rs. 200 p. m.	10
3. " " "	Rs. 201 and	Rs. 300 p. m.	15
4. " " "	Rs. 301 and	Rs. 400 p. m.	20

Rate of Honorarium (Rs.)			
5. Khadi Sale Between	Rs. 401 and	Rs. 600 p. m.	25
6. " " "	Rs. 601 and	Rs. 700 p. m.	22
7. " " "	Rs. 701 and	Rs. 800 p. m.	19
8. " " "	Rs. 801 and	Rs. 900 p. m.	16
9. " " "	Rs. 901 and	Rs. 1,000 p. m.	13
10. " " "	Rs. 1,000 and	above	10

11. Experiments in Khadi : Under this scheme grants are given to individuals and/or institutions subject to a maximum of Rs. 5,000 in each case. The object is to devise improvements in production techniques.

12. Khadi Hundis : These Hundis are issued every year commencing on the Gandhi Jayanti Day, namely, 2nd October, and ordinarily continue for six weeks. The Khadi and Village Industries Commission designs and prints these Hundis and supplies them to recognised institutions. These institutions issue them for sale on their own responsibility. These Hundis are exchangeable for Khadi - Cotton, Woollen or Silk - at Sales Bhandars attached to the issuing institutions which undertake to redeem them.

13. Sales Rebate : Rebate of Re. 0.19 on every rupee worth of Khadi - Cotton, Silk and Woollen - purchased by consumers.

14. Organisation : In order to implement the above scheme, there are the Central Organisation and seven Zonal Offices in different States of the country. Besides these, State Boards have been set up by the different State Governments, which constitute the accredited agencies of the Commission in the States. Organisations interested in developing Khadi work, should first contact the State Board and then the Zonal Director and the Commission only last.

The nature of the other types of assistance given is as under:

1. Grant of interest-free loans to registered societies and institutions for production and sale of Khadi, purchase of cotton, wool and silk yarn, purchase of Khadi for supplying to the Government, purchase of implements, etc.
2. Grant for payment of honorarium for promoting hand-spinning.
3. Training of workers according to the requirements of the institutions for a maximum period of six months. A stipend of Rs. 30 p. m. is paid to the trainee and a tuition fee of Rs. 15 p. m. per trainee is paid to the institution to defray expenses in connection with the training class.
4. **Peripatetic Party** - Workers are provided for starting any new work. They are kept with the institution till the work is stabilised. The salary of the workers is borne by the Commission. As soon as the work is stabilised, the institution has to take the worker on its own establishment or relieve him to undertake some new work at another institution.

5. Revival of Arts : Besides promotion of yarn spinning assistance is also offered for the revival of

1. Khes weaving,
2. Sambalpur Curtain weaving,
3. Kani Shawl weaving,
4. Kalamkari Printing,
5. Patola weaving.

Any other similar crafts that may be chosen by the Commission from time to time may also be included in the scheme.

6. Honorarium for Promotion of Handspinning : The scheme is as follows :

a. Honorarium for introducing a charkha	Re. 1
b. Scholarship per trainee	Rs. 5
c. Commission on the yarn production at 12 Naye Paise per seer of 80 tolas upto a maximum of Re.1	Re. 1
d. Subsidy to cover the loss in prices of yarn spun at 50 Naye Paise per seer of 80 tolas up to a maximum of 8 seers	Rs. 4

Total	Rs. 11
-------	--------

7. **Grants to Intensive Centres :** The Grants are given as under :

Grant for meeting $\frac{3}{4}$ of the cost of construction of godowns upto a maximum of Rs. 5,000 per centre.

ii. Loan for meeting $\frac{1}{4}$ of the cost of construction of godown upto a maximum of Rs. 5,000 per centre.

8. **Exhibitions :**

1. All India Exhibition at	Rs. 3,00,000
2. Large Scale Exhibitions at Rs. 25,000 to Rs. 1,00,000	
3. District Level Exhibitions at Rs. 5,000 to Rs. 25,000	
4. Small Scale Exhibitions upto Rs. 5,000 each	
5. For organising mobile units the following grants are given:	
a. Cost of demonstration bullock carts	Rs. 1,100
b. Cost of magic lantern and equipment	Rs. 800
c. Slides, posters, models, charts	Rs. 500
d. Fixed allowances for 2 workers @ Rs. 25 p. m. for 12 months	Rs. 600
e. Miscellaneous expenses for mobile shows @ Rs. 20 each	Rs. 500

Rs. 3,500

Assistance is extended for renovating old charts, etc., shooting of films depicting growth of Khadi and Village Industries, purchase of and/or repairs materials required for use in exhibitions and for other items supplemental and incidental to exhibitions.

Sales Development : For the promotion of development of Khadi Sales, a Directorate of Sales Development has been organised at the Central Office under the direct control, direction and supervision of Shri Vithaldas V. Jerajani, who is a Member of the Khadi and Village Industries Board. Among the activities of this Directorate are organisation of sales emporia, of bhandars, of exhibitions, etc. The Section is also in administrative charge of the Khadi Hundi Schemes. It has arrangements for training in salesmanship. Among the schemes for promotion of sales development are :

1. Khadi Hundi,
2. Aid to Emporia,
3. Aid for opening new Sales Bhandars.
4. Exhibitions and demonstrations,
5. Museum and demonstration in Khadi Gramodyog Bhavans,
6. Training in salesmanship of Khadi (Refresher Courses),
7. Training of Recruits in salesmanship of Khadi,
8. Training in Window Decoration,
9. Training of managers,
10. Provision for further expansion,

The aid given for starting new sales bhandars is as follows :

Category of Bhandars	Grant per Bhandar Furniture Grant	Grant for recurring expenditure
a. Bhandars having annual Khadi Sales less than Rs.30,000	75% of the cost up to a maximum of Rs. 1,000	10% of the actual sales of Khadi upto a maximum of Rs. 2,500
b. Bhandars having Khadi sales between Rs. 30,000 and Rs. 1,30,000	75% of the cost up to a maximum of Rs. 5,000	6 $\frac{1}{4}$ % of the actual sales of Khadi upto a maximum of Rs. 5,000
c. Bhandars having annual Khadi Sales between Rs.1,50,000 and Rs. 4,00,000	75% of the cost up to a maximum of Rs. 15,000	4 $\frac{1}{2}$ % of the actual sales of Khadi upto a maximum of Rs. 10,000

Khadi Supplies To Government Departments

A special Directorate has been set up to arrange supply of Khadi to Government Departments. The Director in-charge is an Honorary Officer under the Commission. The Directorate deals with the supply of Khadi to the various Government Departments against accepted tenders contracted with the Directorate of supplies (Textiles), Bombay. The indenting departments place their demands with the Directorate of Supplies (Textiles), Bombay, which in turn prepares a schedule in the prescribed form, stating the description of the quality of stores required with their specifications. These tender enquiries are received by this Directorate

which refers them to suitable production centres. Thereafter the Directorate sends its offer to the Director of Supplies (Textiles), Bombay, for confirmation. When confirmed orders in the form of accepted tender are received, the Commission undertakes to supply the material to the consignee concerned. The Honorary Director is assisted by an Inspectorate which inspects the cloth supplied by production centres before it is passed on for supply. The administrative set up includes Co-ordination Section, a Field Section to contact production centres and supervise their production, an Accounts Section to keep proper books of accounts etc. A Central Godown is also maintained where both inspected and passed for supply of articles is stocked.

2. AMBAR CHARKHA PROGRAMME

The Government of India has allocated to the Ambar Charkha Programme production of yarn for the manufacture of 300 million yards of cloth during the Second Five Year Plan period. The programme for the year 1956-57 was a limited one and in all its features represented only an extension of the field experiments that were carried out between January and March, 1957. To attain the targets set for the Ambar Charkha Programme in the production of cotton textiles during the Second Plan period, it is estimated that some 8 lakhs of Ambar Charkha Sets would have to go into production. No definite decision on this question has been taken so far. The programme continues to be based on an extension of the training programmes of the previous years. Production, therefore, is incidental to training and/or limited to the number of charkhas distributed among trained spinners for independent operation. The training programme has already been explained in Chapter II.

Scheme-wise, the assistance given by the Khadi and Village Industries Commission is as follows :

Saranjam Karyalayas

Recurring and non-recurring grants are made available to Saranjam Karyalayas as under :

- A. Recurring expenditure at Rs. 4,200 per Saranjam Karyalaya. This grant is given for meeting the expenditure of a Technician at Rs. 350 per month. To avail of this grant, it is necessary that the Technician engaged by the Saranjam Karyalaya should have a degree or diploma in Mechanical Engineering from a recognised

Institution. In case the Technician is selected from experienced Khadi Workers prior approval of the Commission is necessary before appointment.

B. Non-recurring expenditure is provided for as below :

Item	Amount
1. Godown	Rs. 10,000
2. Drilling machine and milling attachment	Rs. 2,500
3. Wood Working Lathe	Rs. 500
4. Circular Saw	Rs. 600
5. Emery Stand	Rs. 600
6. Miscellaneous carpenters' tools, furniture, office equipment, etc.	Rs. 800
Total	Rs. 15,000

Loans :

Loans for working capital for the manufacture of Ambar Charkhas and its accessories will ordinarily be advanced on the basis of 25 per cent of the production targets fixed for a year to each Saranjam Karyalaya.

The programme for setting up of Saranjam Karyalayas will be carried out by the Khadi and Village Industries Commission directly through its own agency or agencies and/or through the agency of Statutory State Boards, State Governments, Co-operative Societies and other registered institutions recognised by the Commission.

Note : Experience has shown that the Saranjam Karyalayas to which this amount of Rs. 15,000 is given are not in a position to

attend to servicing and minor repairs of the Charkhas which are distributed to spinners in far flung villages. It is also found that spinners need such services and guidance for some time after completing training in the Parishramalayas. The Commission has, therefore, made provision for small Saranjam Karyalayas which will produce about 15 to 20 Charkhas per month and arrange for servicing, repairs and for supply of spare parts to the spinners in nearby villages. These will be Saranjam Karyalayas-cum-service centres which will cater to the needs of about 300 spinners. A grant of Rs. 2,000 to Rs. 3,000 is given to such centres.

Vidyalayas

To meet recurring expenditure, contingencies, losses and depreciation, a tuition fee at Rs. 25 per month per trainee will be given to each of the Vidyalayas run by the registered institutions.

Non-recurring expenditure : A lump sum grant of Rs. 1,000 per Vidyalaya for carpenters' and other tools.

Grant at Rs. 120 per Ambar Charkha Set for 50 Ambar Charkha Sets.

Parishramalayas (Ambar Shiksha Varg)

An outright grant of Rs. 6,700 for 50 Ambar Charkha sets is given by the Commission to recognised institutions for each Parishramalaya, when an institution starts to train Ambar spinners. The break-up of the grant is as follows :

Ambar Charkhas	Rs. 6,000
Spare parts	Rs. 350
Carpenters' tools	Rs. 200
Furniture	Rs. 150
	6,700

A hire-purchase loan of Rs. 6,000 is also given on account of each Parishramalaya. This is to facilitate one spinner learning on one charkha set which he/she can take on hire purchase after the training in the Parishramalaya. A Parishramalaya may be split into upa-Parishramalayas. For convenience, therefore, sanction of funds is made on the basis of the number of trainees to be trained and not on the basis of Parishramalaya unit.

Production

After completing the course of training in the Parishramalaya and acquiring the minimum proficiency required, the spinner will be eligible for getting an Ambar Charkha on hire-purchase. The institution which runs the Parishramalaya will make proper arrangements for the distribution of these charkhas among the spinners under a regular agreement with them. The Commission gives a loan at the rate of Rs. 120 per charkha set for as many charkhas as are required for distribution to the spinners under the hire-purchase scheme. The hire-purchase loan is an interest-free loan repayable to the Commission in 5 equal annual instalments.

The Commission has under consideration to give an amount not exceeding 50 per cent of the price of the Ambar Set as a subsidy to the spinners who produce minimum number of hanks within a prescribed period.

Cotton Purchase

The institution will be required to store cotton in the season so that it could be made available to the spinners throughout the year at fair prices. In order to enable the institutions, to purchase the cotton in season, the Commission gives loans for the purpose. The institutions might make their own arrangements for purchase of cotton or can make use of the facilities that the Commission's Central Office affords. The amount of loan to be given will depend upon the production

target fixed by the institution. The loan will be interest-free and will be repayable within one year.

Working Capital Loan

In addition to the loan for cotton purchase, the institutions will require funds for purchase of yarn from the spinners, for storing it and getting it woven into cloth and for marketing it. For this purpose the Commission provides working capital loan. Ordinarily the amount of the working capital loan admissible will be 35 per cent of the estimated annual production and/or sale. At present this amount is being given at the rate of Rs. 100 per charkha in active operation in the field. This loan also will be interest-free and is renewable from year to year, provided the institution refunds 10 per cent of loan every year.

Technical Guidance

The spinners who take the same Ambar Charkhas after completion of their training in the Parishramalaya are immediately deprived of the expert supervision and guidance that they were getting in the Parishramalaya. Experience shows that, at least for some time, the spinners require occasional guidance and supervision, especially in the maintenance of the Charkhas. Ordinarily it will be the responsibility of the institution to which the spinners are attached to arrange for the follow-up programme of supervision and guidance. In order to make this programme effective the Commission has provided for the salary of supervisors at the rate of Rs. 50 to Rs. 75 per month for a period of 6 months and another sum of Rs. 50 per supervisor for equipments. Each supervisor is expected to cover 50 to 100 spinners.

Rehabilitation of Weavers : As the aim of the Commission is to promote local and/or regional self-sufficiency in cloth, facilities for weaving the yarn into Khadi have to be provided. It is found that there are several spinning centres where adequate

weaving facilities are not available. The Commission, therefore, has programmes for the rehabilitation of weavers in spinning areas. The Commission has provided for a sum of Rs. 500 for the rehabilitation of a weaver family. The break-up of the amount is as under :

Item	Amount
a. Cost of weaving equipment	Rs. 200
b. Charges for transportation of weaving equipments from their present place to spinning centres	Rs. 100
c. Expenses for installing weaving equipment	Rs. 50
d. Wages to be given to weavers during the period of transit and re-establishment	Rs. 150
Total	Rs. 500

The institution to which the weaver is attached, will provide housing facilities for the family.

The scale of Khadi production will rise as Ambar Charkha Spinning gathers in momentum. Weavers unaccustomed to weaving Ambar yarn will need initial training for a period not exceeding three months. During this period of training a stipend at the rate of Rs. 30 per weaver trainee will be admissible over and above the normal wages which the weaver will earn during his period of training. In order to supervise the work of such weavers and to give them expert advice and guidance, provision has been made for the appointment of weaving masters. A grant at the rate of Rs. 75 per month per weaving master may be given to the institutions which have arrangements for the rehabilitation and training of weavers.

Storage Depots

The Commission has made provision for construction of storage depots or godowns for the stocking of cotton and Khadi. These storage depots are of 3 different types: large, medium and small. The Commission advances loans to the production institutions according to their needs of storage space, subject to a maximum of Rs. 75,000 for a large-sized godown, Rs. 25,000 to a medium-sized godown and Rs. 10,000 to a small-sized godown.

Marketing

Khadi produced by the different institutions and centres is marketed through a net-work of sales depots and other sales agencies set up by the institutions themselves or by the Commission under its sales development schemes.

As in the case of traditional Khadi, a production and/or sale subsidy is given to Ambar Khadi as well. The subsidy is of 3 kinds :

1. 18½ per cent rebate to the consumer.
2. A production subsidy at ½ anna or 3 Naye Paise in a rupee to all certified Khadi centres on their production and/or retail sales of Khadi.
3. Subsidy at ½ anna or 3 Naye Paise in the rupee on production and/or retail sales up to Rs. 32,000 a year subject to the condition that this subsidy will be paid only to such institutions/centres as have shown an increase of 10 per cent over the achievements of the previous year. This subsidy is in addition to the production subsidy mentioned in (2) above.

Working capital loans mentioned in the above paragraphs are interest-free and returnable in equal annual instalments over a period of 5 years.

3. THE INTENSIVE AREA SCHEME

The Village Today

The Intensive Area Scheme is based on a proper appreciation of the present socio-economic position of the villages. The three age-old pillars of our village community, namely, the caste system, the joint family system and the village as a unit of purpose, have been shattered by various political, economic and sociological factors. If rural development programmes are to succeed, the communal bonds of the village as a socio-economic unit have to be re-established through a new type of village organisation which would meet the needs of the changed conditions. This is possible if village resources are substantially socialised, even while the forms of ownership are not altered and the idle resources in the village are put to the best use.

The Intensive Area Scheme strives for a more balanced village economy which ensures:

1. increased production ;
2. a minimum standard of living estimated to cost about Rs. 1,800 per family per annum ;
3. equalisation of opportunities for employment ;
4. improvement of techniques consistent with the goal of full employment ;
5. decentralised co-operative economy in the place of exploitative competitive economy ;
6. elimination of the competition between towns and villages by enabling villages to have the amenities of

town life so that they need not look to urban centres for opportunities of economic betterment and civic amenities.

The special features which distinguish the Scheme are :

1. The Scheme does not merely present a picture of a reconstructed society, but presents also a formula to build up the society.

2. The Scheme is not one carrying on extension work, but is a programme of planning and implementation based on research, scientific study of factual data and experimentation.

3. Village industries in the Scheme are not meant to be only a temporary relief measure, but to occupy a permanent place in our economy.

4. The programme of development does not come from outside, but is formulated by the people themselves.

5. The Scheme provides for a Social Security Programme by which the village community accepts collective social responsibility for assuring employment, health, education, housing etc., to every member. The main features of the programme are :

- a. guarantee of employment by which any member requiring work may work at the local Parishramalaya and earn 6 naye paisé per hour of work.
- b. a health scheme by which medical facilities are made available to members against a nominal fee.
- c. educational facilities like provision of books and fees to poor students.
- d. provision of houses for Harijans and other poor men in the village ; and

- e. common undertaking of social functions and ceremonies and sharing of expenditure by the community.

This programme saves the poor families from further indebtedness by making the richer members share the cost of amenities in the best interests of the community. It thus helps to narrow down the disparity between the rich and the poor; and

6. The index of progress is "Antyodaya" in which the narrow individualistic outlook of the villager gives place to a positive concern for the welfare and progress of the poorest of the community.

The Scheme At Work

The Intensive Area Scheme was introduced by the erstwhile All India Khadi and Village Industries Board early in 1954-55 in selected rural areas having a population of 20,000 each. The immediate objective of the scheme was to organise production for local consumption and thus create conditions favourable for full employment.

Selection Of Areas

Three main criteria are now applied for selecting the areas, namely :

1. There must be proper instruments of experiment and change in the form of experienced constructive workers with a research bent of mind and a conviction in the success of the programme.
2. There must be indications to show that they have developed initiative and organizational strength by undertaking constructive programmes, particularly in Khadi and village industries.

3. The area must have created its own local leadership which can take the responsibility of executing the scheme with the help of the technical assistance provided by the Khadi and Village Industries Commission.

Selection of an area is thus made purely on merit.

Since April, 1956, a Scheme of Pre-Intensive Areas has been instituted. Areas are selected in the first instance as pre-intensive for a period of one year as a period of preparation by way of training personnel, formation of Kshetra Samitis, and introducing certain village industries with the assistance given by the Commission. Those coming up to the mark are then converted into full-fledged Intensive Areas.

Area Of Operation

The area of operation is expected to cover roughly a population of 20,000 and some twenty to thirty villages. The headquarters is located in a central village of the Area. At this village, model centres of various village industries are established through which activities are organised in the surrounding villages.

Organisational Set-Up

After selection of Areas, steps are taken to build up suitable organisations both at Area and village levels to create proper operative agencies capable of enlisting people's co-operation.

1. **Kshetra Samiti** : The Kshetra Samiti is the non-official, voluntary organisation of the people of the Area and is registered under the Charitable Institutions Act of 1860. An *ad hoc* pattern has been adopted for this body as this is likely to be a more suitable agency than a co-operative or *gram panchayat* to strive for the desired objectives. Membership of this body

is open to those who are above 18 years of age and who pay an admission fee of Re. 0.25 and agree to contribute a monthly subscription of one day's labour or one rupee in kind or cash. The chief aims and objects of the Samiti are to promote all-round development of the Area to provide full employment and raise the general standard of living, to evolve a pattern of village organisation which can mobilise local resources and organise appropriate institutions for implementing the development programmes. The primary members constitute the general body and have power to lay down policies for the Committee in its day-to-day activities, to elect the members of the Committee and to formulate the programme of activities for the year.

2. Yojana Committee: This Committee, consisting of 9 to 11 members, is the executive body of the Kshetra Samiti and is elected from among the members of the Samiti. This body is responsible for carrying on the day-to-day activities of the Samiti, for supervising the execution of all the programmes and plans of the Samiti, for handling the funds of the Samiti and for giving financial assistance to Gram Vikas Mandals and for appointing sub-committees for specific programmes. Its work and activities are, however, subject to the approval of the Niyamak Mandal.

3. Gram Vikas Mandal: The Gram Vikas Mandal is an *ad hoc* non-official organisation at the village level and this body of seven to nine members is elected by the Primary members of the Mandal of a particular village. This Mandal concerns itself with every activity of the village - survey, planning, discussion of village problems at meetings of villagers and implementation of programmes - and associates people with all its activities. It receives its powers as well as financial and technical assistance from the Yojana Committee and is responsible to it for all the development work in the village.

4. Niyamak Mandal : The Niyamak Mandal consisting of three members nominated by the Khadi and Village Industries Commission checks the expenditure and accounts and activities of the Samitis.

5. Staff : Every area has an Organiser and Assistant Organiser appointed by the Khadi and Village Industries Commission. They help the Kshetra Samiti in estimating the requirements of their areas, utilisation of resources, assessment of available manpower, formulation of development plans and their implementation, etc. They also supervise the work of the Kshetra Samitis and Gram Vikas Mandals and co-ordinate their activities at Area and village levels. Every Area has also nine other workers trained in various village industries.

Zonal Offices : There are six Zonal Offices, namely, at Dhanaura and Sahason in U. P., Nasik, Ahmedabad and Rajkot in Bombay State, and Tiruppur in Madras State, each office covering about ten Areas and placed in charge of a Development Officer. The Development Officer supervises the activities and checks the accounts of the Kshetra Samitis and Gram Vikas Mandals. He also helps in the preparation of programmes and co-ordination of activities of various Areas, supply of raw materials to Areas. etc. He acts as a link between the Areas and the Central Organisation.

Central Organisation : The Central Offices of the Intensive Area Scheme are located at 3-B/2, Purvi Marg, Rajendra Nagar, New Delhi-5. The Offices have an Administrative Section with an Organiser for the Scheme and a Research Section with Research Officers and Investigators. Shri Jhaverbhai Patel is the Member of the Khadi and Village Industries Board for the Intensive Area Scheme of the Commission.

Scope Of Work

Strictly speaking, the programme is limited to the aspects which balance the village economy, in other words, to the field of village industries. But as the programme is one of investigation and experimentation into the problems of village industries, it has to study practically all the aspects of village economy which affect village industries – occupational pattern and manpower distribution, resolving external and internal conflicts of village economy, creation of suitable institutional machinery to promote enlightened self-interest of the individual. Problems of village industries cannot be solved as isolated items but as part of an entire rural economy.

Survey And Planning

In each area, two villages, which are most promising, are selected for intensive survey and planning covering all aspects of village life. The survey and planning are done by the villagers themselves on the basis of family schedules under the guidance of trained personnel. These two villages serve as "laboratory villages" for evolving formulae on the basis of which a programme of rapid planning is extended to the rest of the villages. Rapid survey by village schedules is generally limited to manpower utilisation and land distribution and crop pattern of the Area.

After survey, planning is done both at village and regional (Area) levels. Village development plans have their own limitations, as they raise problems which individual villages cannot overcome. These problems relate to vital economic activities, such as agricultural and industrial production, marketing, training and research, education, health and social relations. These essential requirements can be met only by the coordinated efforts of a group of villages, i. e., by the Area or region as a unit. The basic objectives in such planning should be common ownership of

equipment so as to facilitate the introduction of improved techniques in production, the provision of employment and equalisation of opportunities which alone can ensure rational utilisation of resources and Antyodaya.

Two-Fold Programme

The programme can be executed under two heads :

1. Gram Sankalp ; and
2. Regional Planning.

Every village can take a Gram Sankalp or collective decision to take up various items of a programme for the village; and every Area can decide to develop various regional institutions for the entire area. The following are the items of the programme:

1. Gram Sankalp :
 1. Formation of Gram Vikas Mandal;
 2. Activisation of Gram Panchayat;
 3. Co-operative Society;
 4. Basic School;
 5. Community Production Centre;
 6. Shanti Dal;
 7. Full and Self-employment;
 8. Minimum standard of living;
 9. Provision of education and health services;
 10. Sharing of social expenditures;
 11. Kitchen garden;
 12. Community land;

13. Building Programme;
 14. Provision of cleanliness through bath-rooms and latrines;
 15. Free justice; and
 16. Collective payment of land revenue.
2. Regional Planning through institutions :
1. Kshetra Vikas Samiti;
 2. Education Committee;
 3. Health Committee to organise maternity homes and Nature Cure Centres;
 4. Co-operative Marketing Committee;
 5. Co-operative Industries Committee;
 6. Co-operative Workshop;
 7. Co-operative Housing Society;
 8. Cow Development (Gosamvardhan) Committee;
 9. Mahila Mandal;
 10. Shanti Sena;
 11. Cultural Programmes Committee;
 12. Insurance Society to cover life and cattle and crop failures; and
 13. Co-operative Bank.

Finances Of The Scheme

The funds for the Intensive Area Scheme are obtained from non-government and government sources. The former consist of the admission fees and annual subscriptions of members and

donations and loans by non-Government institutions and individuals. Government sources are subsidies, grants and loans of State and Central Governments given through the Khadi and Village Industries Commission.

The Commission provides funds under both special and general schemes. Under special schemes, finance is provided as follows for each Area :

A. Recurring :

- (i) Rs. 12,000 per annum towards salary and T. A. of workers ;
- (ii) Rs. 2,500 towards contingencies and cost of cycle.

B. Subsidies :

- (i) For village industries—bamboo, fibre, gur and khand-sari, pottery and other local industries at Rs. 12,000;
- (ii) For Model Pottery Centre at Rs. 4,000;
- (iii) For construction of village industries godown at Rs. 10,000.

C. Loans :

- (i) For bamboo, fibre, pottery and local industries at Rs. 10,000;
- (ii) For Model Pottery Centre and other industries at Rs. 4,000;
- (iii) For construction of village industries godown at Rs. 5,000;

D. Community Production Centre :

- (i) Grant of Rs. 8,000 for building and Rs. 1,000 for equipment;
- (ii) Loan at Rs. 4,000.

E. Workshop :

- (i) Grant Rs. 7,000.
- (ii) Working Capital Rs. 3,000.

F. Khadi :

- (i) Grant for Khadi Godown Rs. 10,000.
- (ii) Loan for Khadi Godown Rs. 5,000.

Under general schemes, the Commission provides funds for all or any of the village industries which may be started in Intensive Areas alongside of the Industries mentioned under special schemes.

Pre-Intensive Areas : Grant of Rs. 4,000 is paid to each pre-intensive area to meet the salary of the Organiser and assistant Organiser and to prepare the ground for the development of the Area. The expenditure on the Central Organisation and the Area Organisers and Assistant Organisers and on Conferences, etc., is also met by the Commission.

Distribution Of Intensive Areas

As on 31-3-57, there were 48 full Intensive Areas of which 14 were started in 1954-55, 19 in 1955-56 and 15 in 1956-57. In 1956-57, 39 pre-intensive Areas were started.

4. BEE-KEEPING INDUSTRY

Development of this Industry was undertaken by the Khadi and Village Industries Commission as a part of its development programme under the First Five Year Plan. Work done so far is very encouraging. Nearly 11,000 bee-keepers owning about 40,000 modern hives have been helped. Their annual production is about 4 lakh lbs. of honey valued at Rs. 8 lakhs.

The development programme for the industry has the following important features :

- a. Scientific collection and marketing of wild honey.
- b. Utilisation of honey in the manufacture of jams, jellies, syrups, preserved fruits, ayurvedic medicines etc.
- c. Improved marketing arrangements for honey to lower its prices without affecting the income of the producer.
- d. Formation of co-operatives and giving them adequate financial help in the form of subsidies and loans.
- e. Aid to professional bee-keepers and establishment of model apiaries.
- f. Training fieldmen and apiarists. Village beekeepers will be trained in their own cottages.
- g. Encouraging bee-keepers to take to nursery work so that bee colonies can be purchased from them by the Commission at Rs. 25 and supplied to others at 50% subsidised rates. In addition to the subsidies available to the beekeeper, an equal amount of grant will also be given to the nursery-man.

Other features of the Commission's programme are :

1. Intensive surveys of areas for development of this industry.

2. Training in schools by introducing bee-keeping courses in them. In a year 50 schools will be helped.

3. Training of 25 educated persons every year in bee-keeping and helping to set up apiaries. They will be provided with hives at half the cost, the other half of the cost being recoverable in instalments. Equipment worth Rs. 200 will also be provided at half the price.

The aid offered is as follows :

1. Area Offices :

Grant towards equipment, beehives and appliances at Rs. 1,800 per Area Office. Rent at Rs. 25 p.m. per Area Office. Contingencies at Rs. 10 p.m. per Area Office.

2. Substations :

Subsidy on hives at 50% of the cost or Rs. 10 per hive whichever is less.

Grant for equipment at Rs. 200 per sub-station. Contingencies at Rs. 5 per month per sub-station; also rent at Rs. 5 per month.

3. Model Apiaries :

Grant on equipment at Rs. 1,800 per apiary. Rent and contingencies at Rs. 25 per month per apiary.

4. Beekeeping In Schools :

Grant to schools for Beekeeping Classes at Rs. 500 per school.

5. Breeding Stations :

Grants to Pedigree Breeding Stations for equipment at Rs. 6,500 per station.

6. Schemes to help planters to set up large scale apiaries :

Grant to planters towards salary of fieldmen at Rs. 50 per month.

7. Educated Persons :

To help educated persons set up apiaries towards subsidy on equipment and hives at Rs. 500 per person; in addition training facilities; the training would be for a period of 3 months when stipends @ Rs. 30 p. m., actual travelling expenses not exceeding Rs. 25 and fees @ Rs. 15 p. m. would be paid to them.

8. Training :

Stipends to trainees for the Apiarists' course at Rs. 40 p.m. per trainee for 6 months. Stipends to trainees for the fieldmen's course at Rs. 30 p. m. per trainee for 3 months. Tuition fee at Rs. 45 per trainee. T. A. at Rs. 25 per trainee.

9. Loans :

Loans to Statutory State Boards or Co-operative Societies for expansion of colonies as working capital, repayable in 3 years, interest-free for the first year and with interest at 3% during the subsequent years.

Loans to educated persons for equipment and hives repayable within five years interest-free.

Unless otherwise provided, the funds i. e., grants and/or loans, shall be disbursed to the State Governments, Statutory State Boards, Co-operative Societies and/or Registered Institutions.

Loans for non-recurring expenditure shall be repayable within a period of five years from the date of drawal and no interest shall be charged thereon if repaid within the stipulated period either in lump sum or in instalments. Loans for working capital shall be repayable within a period of 3 years. No interest shall be charged during the first year. For the second and third years, interest will be charged at 3% per annum.

8 COTTAGE MATCH INDUSTRY

The match industry of India consists of large-scale mechanised, medium-scale semi-mechanized and small-scale non-mechanised units. On the basis of their capacity they are classified into :

'A' class with an output exceeding 5,00,000 gross boxes a year.

'B' class with an output below 5,00,000 gross, but above 30,000 gross boxes a year, and

'C' class with an output not exceeding 30,000 gross boxes a year.

The **WIMCO** group dominates the domestic market both in the matter of large-scale production and marketing. The principal problem facing the smaller units in general, and cottage units in particular, is the marketing of their products.

The programme of the Commission is the promotion of a new class of factories, known as 'D' class, licensed to produce a maximum of 25 gross per day and capable of employing about 40 persons each. For purposes of allocation of production to 'D' class factories, the daily production of 'D' class factory is estimated at only 15 gross boxes a day. The object of the programme seeks to subserve is:

1. to decentralise manufacture of matches;
2. to make manufacture possible without the use of machinery;
3. to save soft wood from being burnt as match splints and eventually to stop the denudation of forests;

4. to minimise railway transport by manufacturing matches in localities of consumption in and around villages;
5. to provide employment for 15 times the number of men per 100 gross of production by automatic machines and double the number of men who find occupation by making matches out of machine made splints and veneers.

The cost of the basic and other equipment of a 'D' class factory with a daily output of 15 gross boxes is estimated at Rs. 6,000. As the existing rebates of excise duties in favour of these factories are sizable and as the costs of production, relative to those of the larger factories, are also favourable, it is expected that co-operative institutions may come forward for taking up production.

It is computed that in the manufacture of 1 gross boxes of matches, 1.5 persons can find full-time employment. On that basis, a 25 gross factory can provide employment to 37.5 persons, or say, 38 persons; and a 15 gross factory to 23 persons. The nature of match manufacture is such that a large number of processes such as frame filling, box making and splint making can be carried on in the houses of the workers themselves as subsidiary occupations. In other words, of the total employment of 23 persons in a 15 gross factory, not more than 5 are required at the factory premises. On the basis that they devote a third of a day to this work, the number of workers who can find part-time employment is 54. Thus employment per 15 gross factory works out to 5 full-time workers and 54 part-time workers.

The programme of the Commission consists of :

1. **Training** : The programme is a two-fold one :

- a. Students will be trained directly under a stipend system, and

- b. training facilities will be made available through Peripatetic Demonstration parties and Operator training parties. The training programme envisages training of 300 persons each year in batches. The period of training is 4 months.

Operators' work is divided into four training circles each circle turning out 30 local artisans per batch. This work will be conducted in 'D' class 'host factories' of the Commission.

To supplement training programme and to facilitate the training of all the required workers in the factory peripatetic training-cum-demonstration parties will be sent out. This demonstration work will be organised in the 'D' class match factories that will have been set up.

2. Research : There is a Training-cum-Research Centre where, besides training, Research work is conducted and Research Reports published.

3. Marketing : To ensure prompt sales of the output of the 'D' Class units, marketing depots, will be set up. Co-operatives and State Boards and C. P. A. will be assisted by way of loans to meet their working capital expenses to set up the Depots. In addition to marketing, these depots will assist the factories by supplying raw materials etc.

The aids offered by the Commission are as follows :

1. Grants :

- i. Grant towards 75% cost of the equipment subject to a maximum of Rs. 2,100 per factory.
- ii. Grant towards 50% cost of construction of buildings at Rs. 1,500 per factory.

2. Grant to Match Marketing Depots for meeting organisational charges for one year subject to a maximum of Rs. 3,000 per depot.

3. Loans :

- i. Working Capital for co-operative societies/registered institutions for establishing new depots for marketing cottage matches or for old Depots.
- ii. Loan to co-operative societies/registered bodies for the revival of defunct units and for starting new 'D' class factories.
 - a. Working capital for 'D' class factories at Rs. 3,200 per factory.
 - b. Loan for meeting 25 percent cost of equipment at Rs.700 per factory for 'D' class factories.
 - c. Loan for meeting 50% of the cost of construction of buildings at Rs. 1,500 per factory for 'D' class factories.

Loans are for non-recurring expenditure and are interest-free and payable within five years.

Loans for working capital are repayable within 3 years and will be interest-free for the first year and with interest at 3% for subsequent years.

4. Training :

1. Stipends for 150 graduate (B. Sc.) trainees at Rs. 60 p.m. for 4 months.
2. Stipends for 150 other trainees at Rs. 40 p.m. for 4 months.
3. T. A. at actual 3rd class fare plus incidental charges at Rs. 2 per day per trainee.
4. Tuition fee at Rs. 25 per trainee per month,

6. VILLAGE POTTERY INDUSTRY

According to the Census of India, 1951, there are about 3,60,000 persons classified as potters and makers of earthenwares. But as mentioned in the pamphlet - Pilot Project in Pottery-, in U. P. alone there are more than 2,50,000 potters. Most of them are hereditary village potters manufacturing for the local market, cooking pots, storing and serving pots, water-pots and other domestic utensils. There are also about 1,25,000 persons working with clay to manufacture bricks, tiles, pipes and other building materials. Among the potters there are some who make artistic pottery by way of simple glazed wares and painted toys. Their goods find a market in the towns.

Various causes have contributed to the decline of village pottery. Mass production of house-hold articles by the metal-ware industry has challenged the centuries-old monopoly of the village potter. The mechanized ceramic industry, manufacturing glazed and unglazed earthenware, has also come up as a strong rival. On the production side, the industry has suffered owing to lack of organisation, improved tools, improved techniques and marketing facilities. A comprehensive programme of research, experiment, demonstration, training, pilot centres, etc., is, therefore, necessary. The Commission's programme provides for assistance in the form of subsidies for certain items.

The Commission's scheme for the organisation and development of the Village Pottery Industry is a limited one and consists of :

- i. Production programme.
- ii. Extension programme.
- iii. Marketing programme.
- iv. Training programme.
- v. Central Organisation.

The aids offered by the Commission come under the following heads ;

- I. Production Programme :**
1. Common Workshed units;
 2. Loan for purchase and sale;
 3. Model production centres;

- Supply Of Equipments :**
1. Potter's wheels;
 2. Sets of wooden moulds;
 3. Bhatti sheds;
 4. Tile press for roofing and flooring tiles.

- II. Extension Programme :** Share capital grant for formation of Co-operative Societies.

- III. Marketing Programme :** Establishment grant to selling agencies.

- IV. Training Programme :**
- (1) Central Training-cum-Research Centre, Khanapur;
 - (2) Regional Training Centres at :
 - i) Naduvannur (Kerala State)
 - ii) Bhadravati (Bombay State)
 - iii) Meerut (U. P.)
 - (3) Demonstration Squads at:
 - i) Thenpothal (Madras State)
 - ii) Miraj (Bombay State)
 - iii) Ujjain (M. P.)
 - iv) Mugkalyan (West Bengal)

I. Production Units

(1) **Common Workshed Unit** :- The Common Workshed Unit Scheme is to provide working facilities to potters where adequate working space is not available and the potters are not in a position to build their own work places. Each Common Workshed Unit will have a plinth area of about 4,500 sq. ft. to accommodate about 10 potters' families. One Common workshed is provided with Rs. 9,000, 50 per cent rent and 50 per cent loan. The loan is interest-free and repayable in five years.

(2) **Loan for Purchase and Sales** : The loan for purchase and sales is ordinarily given to registered bodies running Common Workshed Units. But Co-operative Societies and Registered Institutions engaged in pottery production may also be considered for this assistance upto a maximum loan of Rs. 5,000 per unit repayable in three years. This loan is interest-free for the first year and at 3 per cent interest for the 2nd and 3rd years.

(3) **Model Production Centres** : These are demonstration units established in areas where potters abound. These units initiate new types and improved techniques which the local potters can adopt. Five centres which are operating to-day will be continued. They can get further assistance, depending on their performance. No more such model centres are to be started.

Supply of Equipments : Individual potters can avail of this assistance only through the Registered Institutions or Co-operative Societies recognised by the Commission. It is possible for individual potters to get the pottery equipments from them at half the cost. This may be paid in instalments if these institutions extend that facility.

Out of the improved potter's wheels, No. 1 is an Iron

attachment with bearings for use under the existing conventional potter's wheels.

The second type of wheel is complete in itself except its rim which has to be plastered with clay.

The third type is a chain-driven wheel rotated by an un-skilled helper while the skilled potter is able to use all his energies for improving his production. The speed of this wheel can be regulated at will.

The improved potter's wheels enable the potter to engage himself in precision work. It is safer to handle as against the traditional wheel.

The wooden moulds offered at subsidised prices under Item No. 4 are for making clay pipes and special tiles. One big set of moulds will be for making :

- (a) Clay pipes of 2' length and diameters 9", 4" & 2",
- (b) Double ventilator tiles,
- (c) Double skylight tiles,
- (d) Flooring tiles, and
- (e) Ridge tiles.

A smaller set will consist of moulds for :

- (a) Clay pipes of 2' length and diameters 6" and 3",
- (b) Single ventilator tiles,
- (c) Single skylight tiles,
- (d) Ridge tiles, and
- (e) Flooring tiles.

Both these sets will contain wooden trays and other necessary small tools. The big set will cost Rs. 120.

(4) **Bhatti Shed** : This is for constructing a suitable shed over the existing bhatti of the potter. It is intended to provide protection against rain or hot sun and facilitate firing. The subsidy amount can be had in advance if applied through a registered body. The total cost of construction and materials for one such bhatti shed is taken as Rs. 200 of which Rs. 100 can be had as subsidy. There is no particular type or design for this shed.

(5) The press for roofing and flooring tiles will make possible manufacture of tiles with definite shape, size and finish. The roofing tiles are either of the conical country type or of the pan-type of West Bengal. It is not of the Mangalore type because one Mangalore type tile unit requires a minimum capital of Rs. 50,000 and the clay required has to be exceptionally superior.

II. Extension Programme

Share Capital Grant : This help is offered to encourage formation of more and more Potters' Co-operative Societies with adequate share capital to enable them to function satisfactorily.

Although, upto Rs. 50 as grant per potter in the Co-operative is available, Co-operative Societies with more members will require less share capital to start with. Therefore, each demand will be considered according to the number of members and according to the programme for the prospective Society. As a rule, individual potters have to contribute Rs. 5 towards the share capital of the Society.

III. Marketing Programme

The assistance under this programme is to assist the selling agencies of pottery articles. The following system is adopted by the Commission for consideration of grant to selling agencies:-

Grant of 20% on actual sales, if the annual sales of the agency exceed Rs. 2,000 but are not more than Rs. 5,000.

15% on sales exceeding Rs. 5,000, but are not more than Rs. 10,000.

10% on sales exceeding Rs. 10,000.

The maximum grant available per institution is limited to Rs. 3,000 per year. This assistance will not be available on the sale of conventional bricks and roofing tiles.

IV. Training Programme

Arrangements exist for training Organisers, Master Potters and Demonstrators as detailed below :

A. Village Pottery Central Training-cum-Research Centre, Khanapur

Particulars :

- | | |
|---|----------------------------|
| (1) Duration of training | — 10 months. |
| Date of commencement | — 15-5-1957 |
| Courses | — i) Pottery
Supervisor |
| | — ii) Master
Potter |
| (2) No. of stipendiary seats | 30 |
| (3) Stipend per trainee per month | Rs. 40 |
| (4) T. A. to trainees as at actual 3rd Class fare by rail or other means of conveyance and incidental expenses during journey at Rs. 2 per day per trainee. | |

(5) Qualifications :**Pottery Supervisors' Course**

- i) Passed Matriculate or of equivalent standard.
- ii) Higher academic and/or technical qualification in pottery advantageous. Aptitude for village pottery development and village uplift.

Master Potters' Course

- i) Educated upto 7th Standard.
- ii) Average village potters, with skill, and efficiency practice.

(6) Age : 18 to 30 years.

Age : 18 to 30 years.

Registered bodies which have received assistance or applied for assistance or who are engaged in village pottery development may recommend suitable persons for training.

This centre is also engaged in simple tests of clays, etc., experiments and research on practical problems in village pottery development.

B. Regional Training Centres - 3

These centres are run by :

- (1) Shri Gandhi Ashram, Meerut (U. P.)
- (2) Gramodaya Sangh, P. O. Bhadravati, Dist. Chanda. (Bombay State)
- (3) Kurumbranad Development Society, P. O. Naduvannur, via Quilandy (Kerala State)

Particulars :

- | | |
|---------------------------|---|
| (1) Duration of training. | 3 months-3 courses per year. |
| Date of commencement. | 1st February, 1st June and 1st October. |

Course	Specialised training in one or two types of pottery production.
(2) No. of stipendiary seats per Centre per Course.	10
(3) Stipend per trainee per month.	Rs. 40
(4) T. A. to trainees.	Actual 3rd Class fare by rail or other means of conveyance and incidental expenses during journey at Rs. 2 per day per trainee

(5) Candidate's Qualifications :

Professional potters with skill and experience aspiring to learn new techniques. A few posts are available for well-educated persons enthusiastic in village pottery development.

(6) Age : 18 to 30 years.

(7) Admission : Candidates deputed by parties having definite programme of utilising their services after training are given preference,

Application forms and other details may be had from the respective Training Centres direct.

C. Demonstration Squads

The Training Centres are very few and far away from many potters' colonies. Five Demonstration Squads with headquarters in five different zones have been provided. These five Squads are with the following Institutions :

- (1) The Thenpothai Potters' Co-operative Production and Sales Society, Ltd., P. O, Thenpothai, via Tenkasi, Dist. Tirunelveli (Madras State)
- (2) The Bombay Village Industries Board, Southern Maharashtra Region, Ganapaty Galli, P. O. Sangli via Miraj Dist. South Satara, (Bombay State)
- (3) The Madhya Bharat Khadi and Village Industries Board, Ujjain (M. P.)
- (4) The Gram Seva Sangh, P. O. Mugkalyan, via Baganan, Dist. Howrah (West Bengal)
- (5) The Orissa State Khadi and Village Industries Board, Dina Kutir, Bhubaneswar (Orissa).

Wherever formation of a new Co-operative Society or a Registered Institution for village pottery development is possible the services of the nearest Demonstration Squad can be availed of by applying to the concerned Institution. The cost of the demonstration will be borne by the Institution with the aid received from the Commission.

Unless otherwise provided, the funds i. e. grant and/or loans, shall be disbursed to the State Governments, Statutory State Boards, Co-operative Societies and/or Registered Institutions under terms and conditions which are prescribed by the Commission.

7. NON-EDIBLE OILS AND SOAP INDUSTRY

The manufacture and the use of soap is known in India, as in other countries, since a long time. Before the advent of soap, "Sajji Mitti" or alkaline earth was very commonly used by the villagers, both for washing clothes as well as for bathing. Even today the "Sajji Mitti" and other forms of earth continue to be the *poor man's* soap. However, villagers are increasingly getting accustomed to using soap.

Washing soaps are chiefly manufactured by using coconut and ground-nut oils. The total rated production capacity of the large units, numbering 56, is known to be 1,90,000 tons. That of the cottage and other unorganised units numbering 493, is computed at 84,910 tons and 41,180 tons respectively. The total production of soap by these soap manufacturers was 1,33,000 tons during 1954. The organised sector had hardly utilised 50 per cent of its rated capacity, the production being about 99,000 tons in 1955. With the rising standard of living of the people, their soap requirements are gradually increasing and consequently enormous quantities of coconut and groundnut oils are systematically bound to be drawn into this industry, endangering further the already low nutritional standards of the people.

Non-Edible Oils Industry

Nature has been bountiful in India and many varieties of non-edible oil-seeds bearing trees abound in almost all parts of our country. Important and popular among them are Neem, Mahua, Karanj, Undi and Khakan. There are many more. The seeds of these trees go waste as no systematic attempt is being made to collect and utilise them for the human benefit. In the past the oils of these seeds had their own specific use in the

preparation of medicines and for lamps in the homes. Crushing of these oils by bullock-driven ghanis in many parts of our country provided employment opportunities to villagers to some extent. Traces of this industry may be found even today in the countryside.

Potentialities

India possesses many varieties of non-edible oilseeds which can be had in very large quantities. The important seeds are: Neem, Karanj, Undi, Khakhan or Peeloo, Pisa, Nahor, Gaderdi, Tarwata, Kamala, Chalmogra and many more such as Baruni, Jagni, Tobacco, Awakege, Bobbi, etc., etc. They grow on trees which are found abundantly in villages, plains, forests, on river banks and waste lands. In some areas of our country some of these trees are exclusively found, depending upon the soil and climatic conditions. Some of these seeds can replace coconut oil and groundnut oil in soap-making. Mention should particularly be made of Khakhan seeds found in Gujarat and Rajasthan areas, whose oil has almost the same characteristics as the coconut oil and can well replace it for industrial uses. Other varieties in the Khakhan oil group are "PISA" (in Bombay and Orissa States), "CAMPHOR FAT" (found in Dehra Dun and Saharanpur forests and Nilgiris in Madras), "RAM JAVTRI", "KAIPHAL", etc. Undi and Bobbi oils are available in coastal areas and can replace groundnut oil in soap making.

Some sample surveys conducted by the industry in different parts of the country for different varieties of non-edible oilseeds, have revealed that the estimates drawn in 1954-55 are only conservative estimates.

A systematic exploitation of these seeds can provide large employment all over the country. The estimated employment potential of this industry, when fully exploited, according to tentative estimates at the beginning of 1955-56 is as follows:

- | | |
|--|----------------|
| 1. In the collection of non-edible oil seeds | 12,00,000 men. |
| 2. In oil pressing | 60,000 men |
| 3. In soap-making | 30,000 men |

Edible Oils In Industrial Use

It is estimated that about 1,40,000 tons of edible oils go for Industrial purposes including soap-making.

This fact is certainly responsible for the low per capita daily consumption of edible oils which is only 0.33 oz. in our country as against the minimum of 2 ozs. required, according to nutritional standards.

Low Per Capita Consumption Of Soap

In India, the annual per capita consumption of soap was 12.5 ozs. in 1954. At the end of the First Five Year Plan (1956) it was estimated to be 16 ozs. In the western countries, the per capita consumption of soap is upto 400 ozs. By the end of the Second Five Year Plan an annual per capita consumption of about 36 ozs. of soap has been aimed at with the total production of soap at 3,00,000 tons. Even if the organised sector produces the whole of its rated capacity of 1,99,000 tons, there remains still a big gap to be filled.

Line Of Commission's Programme

The Khadi and Village Industries Commission has evolved programmes to establish oil pressing units in different parts of the country. Each oil pressing unit consists of 2 ghanis. Non-edible oil pressing is not common in the country and, for obvious reasons, these units have to be established in out of the way places. Financial assistance of Rs. 6,000 to meet every kind of requirement for the establishment of the unit has been provided by the Khadi Commission. Of this, Rs. 3,000 are grant and Rs. 3,000 interest-free loan repayable in five years. The detailed

break-up for Rs. 6,000 is as follows :

a. Shed for Ghanis and godown	Rs. 3,000
b. Ghanis two	Rs. 600
c. Chakki, Decorticator	Rs. 600
d. Bullocks three	Rs. 1,200
e. Equipment - Weighing Machine, tools, etc.	Rs. 600
	Rs. 6,000

On the basis of neem seeds, the annual production of oil by such a unit will be 180 mds. or 6.4 tons, which means about 10 tons of soap. (There are other non-edible oil-seeds with higher oil content). As such if the utilisation of non-edible oil seeds available in the area be properly planned and collection made, an oil pressing centre of two ghanis can provide oil for about 12 tons of soap. With such an oil pressing unit, assistance for a soap making unit is also made. Such a composite centre with one oil pressing unit and corresponding soap-making unit is termed as a 'C' class unit.

Similarly, a composite centre with two oil pressing units is termed as a 'B' class unit, and that with four oil pressing units 'A' class unit. The capacity of production of soap is accordingly twice and four times respectively.

Detailed Break-Up Of Soap-Making Unit

Type	A	B	C
PRESENT ANNUAL TARGET	30 Tons	15 Tons	8 Tons
Equipment (Rupees)			
a. Shed	5,000	3,500	2,000
b. Well	1,000	1,000	1,000
c. Equipment	2,500	1,800	1,250
d. Miscellaneous	500	200	250
Total	9,000	6,500	4,500

Financial Assistance For The Three Kinds Of Composite Production Centres 'A', 'B' and 'C' Classes Is Given Below :

1. 'A' Class Unit : Four oil pressing units (or 8 ghanis) and with a minimum annual soap production capacity of 30 tons.

	Grant (Rs.)	Loan (Rs.)	Total (Rs.)
1. Capital Cost			
a. 4 Oil Pressing			
Units	12,000	12,000	24,000
b. Soapery	4,500	4,500	9,000
-2. Working Capital	—	20,000	20,000
3. Chemist's salary @ Rs:			
150 p.m. for one year only	1,800		1,800
	18,300	36,500	54,800

2. 'B' Class Unit : Two oil pressing units (or 4 ghanis) and a soap-making unit with a minimum annual production capacity of 15 tons of soap.

1. Capital Cost :			
a. One oil pressing unit	3,000	3,000	6,000
b. Soapery	2,250	2,250	4,500
2. Working Capital		10,000	10,000
3. Chemist's salary @ Rs. 100			
p. m. for one year only	1,200		1,200
	6,450	15,250	21,700

3. 'C' Class unit : One oil pressing unit with a minimum annual production capacity of 3 tons soap.

1. Capital Cost :

a. One Oil Pressing Unit	3,000	3,000	6,000
b. Soapery	2,250	2,250	4,500
2. Working Capital		5,000	5,000
3. Chemist's salary @ Rs. 75 p. m. for one year only	900		900
	6,150	10,250	16,400

School Units :

In order to popularise the use of soap with non-edible oils in schools and encourage the youth to take to this industry, provision for a number of 'D' class (School) units has been made. A grant of Rs. 500 is made to each school unit. The soap will be made out of non-edible oils which could be obtained from the nearest pressing centre. Such school units will, in the first instance, be granted in the vicinity of the areas where our production centres are working so that it may be convenient for them to secure timely guidance whenever required.

How To Apply For Assistance :

The above mentioned categories of financial assistance are provided by the Khadi and Village Industries Commission for the development of the above industry to Registered Institutions and co-operative societies recommended by the Statutory or Advisory State Boards or Director of Industries of State Governments, wherever Statutory State Boards have not been established. In the case of States where Statutory State Boards have not been set up, the above assistance is provided through the State Governments as far as possible.

Recommendation of the Registrar of Co-operative Societies is necessary in the case of co-operative societies.

Applications for aids must be made in prescribed forms which can be had from the Organiser, Non-edible Oils and Soap Industry, Khadi and Village Industries Commission, Post Box

Training Programme

In order to enable the production centres to manufacture quality products, arrangements to train the personnel required for the Industry have been made at the following places.

1. Kora Gramodyog Kendra, Borivli, Bombay.
2. Satya Niketan Ashram, Rajur, Dist. Ahmednagar, Bombay.
3. Gandhi Gramodyog Mandir, Amraoti, Bombay.
4. Sewa Sadan, Bhilwara, Rajasthan.
5. Katchkot Oilmense' Industrial Co-operative Society, Malerkotla, Punjab.
6. Abhoy Ashram, Balrampur, Dist. Midnapur, West Bengal.
7. Sadhana Mandir, Bolarum, Andhra Pradesh.
8. Gandhi Niketan Ashram, T. Kallupatti, Madurai Dist. Madras.

The trainees are paid to and fro travelling expenses besides stipend during the period of training. Graduates will get Rs. 60 and non-graduates Rs. 40 per month. Only Chemistry Graduates are admitted for training as chemists and preference is given to others with Chemistry as their subject in their I.Sc. or Matriculation examination. Details regarding the date of the course and admission may be had from the Organiser.

Testing Of Soap

It may also be noted that arrangements to test the quality of soap are also made at the above eight training centres.

Research And Improvements

Provision exists for giving grants-in-aid for conducting experiments to improve the various aspects of the industry, the collection of non-edible oilseeds, pressing oil from these seeds, utilisation of non-edible oils for soaps, etc. Detailed information may be had from the Organiser's Office.

8. VILLAGE LEATHER INDUSTRY

The planned recovery and full utilisation of the various bye-products of the carcasses of the naturally dead animals, which account for the major portion of India's output of hides and skins, can substantially add to her national wealth. The development of the leather tanning industry in the villages, integrated with carcass recovery and flaying industry may not only augment India's foreign exchange earnings through the export of tanned, instead of raw, hides and skins, but also facilitate the large-scale production of glue in the country. A planned development of flaying, tanning and footwear manufacturing industries in the villages can provide large-scale employment to the socially depressed and economically backward classes, such as chamars and mahars.

Though the village sector of the tanning and footwear manufacturing industries accounts for the bulk of their respective output and employment, the condition of the artisans engaged in them emphasises the need for an integrated programme of development which, among other things, can ensure :

- i. timely recovery of carcasses and full utilisation of their bye-products, such as meat, bones, tallow, dung, horns, etc.;
- ii. tanning of the hides and skins so recovered by improved methods under properly trained instructors;
- iii. provision of adequate training facilities at selected centres to improve the quality of their output; and
- iv. systematised and planned provision of aid to the various types of artisans engaged in the industry.

The policy implications of the programme are :

- i. no expansion in the capacity or production of the large scale, mechanised tanneries beyond their 1954 levels;

- ii. allocation of tanning between village tanneries and mechanised tanneries, and the small scale mechanised tanneries;
- iii. fixation of definite annual quotas for the export of raw skins in accordance with the increase in the output of tanned skins and progressive reduction in the export of raw skins;
- iv. conservation of domestic tanning materials such as wattle, babul and tarward bark, and encouragement of their cultivation as in Madras, U. P. and other States; and
- v. legislation to remove existing difficulties in lifting carcasses and prevent branding, goading and other similar practices that damage hides and skins.

Policy requirements for the manufacture of footwear are ;

- i. no expansion in the present capacity of production of the large scale mechanised factories;
- ii. reservation of all additional requirements of footwear to the village and small-scale sector; and
- iii. assistance to the village artisan to obtain raw materials and to market his products.

Development Programme

The programme of the Commission consists of ;

- a. carcass recovery centres,
- b. tanning centres (at the rate of one centre per group of 10 carcass recovery centres),
- c. glue manufacturing centres (at the rate of one centre per group of 4 tanneries),

- d. the training of artisans through the establishment of regional carcass recovery training, tanning training-cum-production centres and the organisation of demonstration-cum-training parties, and
- e. small and big marketing depots to aid the marketing of the products of village tanners.

The following aids are offered :

I. Flaying Centres :

- i. **Loan :** for meeting 50% of the capital outlay and the recurring expenditure at Rs. 3,720 per centre.
- ii. **Subsidy :** for meeting 50% of the capital outlay at Rs. 3,000 per centre.

II. Bone Crushing Units :

- i. **Loan :** for meeting the working capital and 50% of the non-recurring expenditure at Rs. 2,150 per unit.
- ii. **Subsidy :** for meeting 50% of the non-recurring expenditure at Rs. 1,150 per unit.

III. Training :

- A. Flaying and carcass recovery centre run by the Khadi and Village Industries Commission, Kera-Gramodyog Kendra, Shimpavali village, Borivli (A suburb of Bombay).
 - i. Stipend at Rs. 40 per trainee per month.
 - ii. T. A. at actual 3rd class fare by rail or by the lowest class available by any other mode of conveyance and incidental expenses at Rs. 2 per day during journey.
- III. Tuition fee at Rs. 25 per trainee per month.

B. Flaying Centres run at other places for training

Grant at Rs. 10,000 per centre for construction of sheds, for apparatus, tools and equipment. The centres will train Commission's nominees. A tuition fee of Rs. 25 and stipend of Rs. 40 per trainee per month will be paid.

C. Training in Tanning

The training-cum-production Centres were being run by the erstwhile All India Khadi and Village Industries Board directly but from January, 1957, these centres have been transferred to local Institutions.

These Centres are :

1. Shri Gandhi Niketan Ashram, T. Kallupatti, Madurai Dist., Madras.
2. Khadi and Village Industries Board, Survail, Nalgonda Dist., Andhra Pradesh.
3. All India Sarva Seva Sangh, Goseva Charnalaya, Nalwadi, Wardha, Bombay State.
4. Bombay Suburban District Village Industries Association, Kora Gramodyog Kendra, Shimpavali, Borivli, Bombay.
5. Khadi Pratisthan, 18, South Tanga Road, Calcutta, W. Bengal.
6. Sri Gandhi Niketan Ashram, Sewapuri, Banaras.
7. Nidubrolu Leather Goods Manufacturers Co-operative Society Ltd., Nidubrolu, Guntur Dist., Andhra Pradesh.
8. Madhya Bharat Khadi and Village Industries Board, Dewas Tannery, Dewas, M. P.
9. Rajasthan Khadi and Village Industries Board, Sanganer.

These institutions are given following grants and loans for running the centres :

Training-cum-Production Centre

- | | |
|---|----------------------|
| a. Non-recurring expenditure as grant for hostel, water pump, tools, equipments, etc. | Rs. 13,800 |
| b. Loan for working capital @ Rs. | Rs. 10,000 |
| c. Recurring expenditure towards salary, rent of tannery, etc. | Rs. 11,940 per year. |
| d. Stipend at Rs. 40 p.m. per trainee for 12 months for 180 trainees. | |
| e. T. A. at 3rd class fare or lowest class available by any other means of conveyance plus incidental expenses at Rs. 2 per day during journey. | |

IV. Village Model Tannery:

- | | |
|---|-----------|
| i. Grant at 75% cost of capital expenditure on land, tanning shed, tanning pits, drains etc., upto a maximum of (per tannery) | Rs. 8,250 |
| ii. Loan at 25% cost of capital expenditure on land, tanning shed, tanning pits, drains etc., upto a maximum of (per tannery) | Rs. 2,750 |
| iii. Loan for meeting working capital upto a maximum of (per tannery) | Rs. 7,000 |

V. Help to Village Tanners :

- | | |
|--|--|
| i. Subsidy for construction of new pits upto a maximum of Rs. 200 per pit. | |
|--|--|

- ii. Subsidy for repairs to old pits upto a maximum of Rs. 50 per pit.

VI. Glue Manufacturing Centres :

- | | |
|---|-----------|
| i. Grant for meeting 75% of non-recurring expenditure on sheds, pits, tools, equipment and land. | Rs. 3,000 |
| ii. Loan for meeting 25% of non-recurring expenditure on sheds, pits, tools, equipments and land. | Rs. 1,000 |
| iii. Loan for working capital. | Rs. 2,000 |

VII. A. Central Marketing Depot

Grant at Rs. 22,000 (Rs. 15,000 plus Rs. 7,000) towards pay, rent, etc., per depot for meeting establishment charges, rent, etc., and for meeting recurring expenditure on contingencies, furniture etc.

Loan at Rs. 25,000 per depot for marketing hides and skins and leather goods.

B. Small Marketing Depot

Grant at Rs. 4,000 (Rs. 3,300 plus Rs. 700) towards pay, rent etc., per depot against establishment charges, rent, etc., and against non-recurring expenditure on contingencies.

Loan at Rs. 15,000 per depot for marketing hides, skins and leather goods.

9. VILLAGE OIL INDUSTRY

Mills and ghanis are the two sectors in the oil industry in India. According to the Report of the Indian Central Oil Seeds Committee there are 7,597 oil mills in the country. The Census of Manufacturing Industries, 1950, mentions 1,034 factories as using power and employing more than 20 persons each. From this it would appear that about 6,400 mills are relatively small in size.

According to the Livestock Census of India, 1951, there are 4,46,000 oil ghanis in the country. These ghanis crush not only the five major oil seeds, namely, groundnut, rape, mustard, sesamum, castor and linseed, but also the minor ones such as niger, kardi, mahua and neem.

The total number of workers employed in the large-scale oil mills is 58,000. Assuming the average employment per small mill at 7 persons, the total employment in the 6,500 smaller oil mills is about 45,000. The total employment in the organised sector of the oil industry is thus 1,03,000 persons.

The ghanis, on the other hand, provide employment to a considerably larger number. According to the Census of India, 1911, there were no less than 5,20,805 workers in the cottage sector of the oil industry as against only 9,745 engaged in the organised sector. Although their number has fallen steadily during recent decades, the employment offered by the village oil industry continues to be considerable. According to the 1951 Census (figures presented by the Deputy Registrar General, Government of India), there were 1,84,588 persons engaged in village oil industry, as against 42,215 engaged in the organised sector of the industry. The programme for the development of this industry is based on the assumption of one tell to a ghani and a total number of 4.46 lakh ghanis.

Though most of the ghanis are situated in the countryside, the telis find it difficult to get their raw materials regularly and at fair prices, because the multiplicity of intermediaries in the oil seeds trade results not only in the exploitation of the farmer's immediate need for cash, but also of the telis who, for want of necessary resources, are compelled to borrow at inflated prices. It may be necessary to set up co-operative and other similar agencies to assure fair prices to both.

Vegetable oils are used both for edible and industrial purpose. All the major edible oils are utilised in varying degrees in the manufacture of *vanaspati* and in industries such as the manufacture of soaps, paints, varnishes and lubricants.

According to the Nutrition Advisory Committee (1949), the minimum requirements of oils and fats per capita are 2ozs. a day, against which the present availability of oil is as low as 0.3 ozs. per day. Since the utilisation of edible oils for industrial purposes constitutes a wastage of scarce national food resources, there is need to reserve edible oils for human consumption and increase the production of non-edible oils such as neem oil for industrial use. Cotton seed oil is used for edible purpose in the form of dressings in the Western countries. It can augment in India supply of vegetable oils for industrial purposes.

Edible oils should be used only for edible purposes and non-edible oils for industrial purposes like soap-making. The *vanaspati* industry should be re-organised such-wise that not only the edible oils now utilised in *vanaspati* making are diverted for consumption as oil, but also oils like cotton seed oil are turned into *vanaspati* and made fit for consumption. This will help to increase the supply of edible oils and fats for the consumption of the people.

The elimination of the present competition between the mills and ghanis by the formulation of a Common Production

Programme for both sectors of the industry and definite allocation of production to each may help to effect the desired rationalisation of production and utilisation of edible oils in the country. The basic principles underlying this allocation are :

- i. exclusive reservation of sesamum for the ghanis, and
- ii. Incentives to the mills for crushing cotton seeds.

For the successful implementation of this Common Production Programme two conditions are necessary :

- i. regulation of State Policy, and
- ii. Improvements of the production techniques in the cottage sector.

State Policy : (i) a ceiling on mill crushing of oil seeds at 26.28 lakh tons and no further expansion of capacity of production of the existing mills. No new licences to set up new oil mills.

- (ii) reservation of certain varieties of oil seeds such as sesamum, niger, kardi and neem for the ghanis.
- (iii) facilities to encourage mill crushing of 10 lakh tons of cotton seeds; such as :
 - a. movement facilities for cotton seeds outside a producing State so as to meet the requirements of genuine crushers;
 - b. abolition of Inter-State levies and duties on cotton seed;
 - c. propaganda to popularise the use of cotton seed cake as cattle feed; and
 - d. use of cotton seed oil in the manufacture of vanaspati by all producers.
- (iv) restriction of soap-making to non-edible oils.

(v) ban on the export of oil seeds to develop the Indian oil crushing industry and to retain oil cake as cattle feed and restriction of exports of edible oils.

(vi) imposition of a cess on mill at Rs. 1.25 per maund. (Rs. 35 per ton) to finance the development of the ghani oil industry.

(vii) nationalisation of trade in oil seeds or the oil mills themselves.

The development programme for the village oil industry envisages :

1. the introduction of improved ghanis and improved techniques of oil extraction in the cottage sector,
2. bringing under the programme of financial assistance the old ghanis, and
3. supply of oil seeds to the improved ghanis and to the ordinary ghanis.

Nature of Assistance

Grants and Subsidies :

1. Equipment subsidy on improved ghanis newly installed at Rs. 150 per ghani, or 50 per cent of cost whichever is less.
2. Grants for equipment to Model H Demonstration-cum-Production Centres at Rs. 1,500 each.
3. Grants for construction of sheds for newly started Model Centres at Rs. 5,000 each. Property will be government property.
4. Production subsidy on Ghani Oil, at Rs. 2.50 per maund.

Loans :

1. Loans for the purchase of improved ghanis, at Rs. 150 per ghani, free of interest and repayable in 5 years from the date of drawal of the funds.
2. Loan for stocking oil seeds bearing 3 years interest free during first year and 3 per cent interest during subsequent years.

Stipends :

1. Stipends to be given as under :
 - a. for training Mistris at Rs. 75 p.m. each for a period of 3 months.
 - b. for the training of Instructors at Rs. 50 p. m. each for a period of 6 months, and
 - c. for the training of Telis at Rs. 30 p.m. each for 1 month.

Financial Assistance

Grants	Rs. 14,44,200
Loans	Rs. 44,01,000

The following allocation of funds has been made by the Commission for 1957-58.

Loans for non-recurring expenditure shall be repayable within a period of five years from the date of drawal and no interest shall be charged thereon if repaid within one stipulated period after either in lump sum or in instalments. Loans for working capital shall be repayable within a period of 3 years. No interest shall be charged during the first year, for the second and third year, Interest will be charged @ 3 per cent per annum.

Item of Expenditure :	Grant	Loan
	Rs.	Rs.
A. Model Ghani Centres (5)	52,500	10,000
1. Building grant at Rs. 5,000 each.	Rs. 25,000	
2. Equipment grant at Rs. 1,500 each.	Rs. 7,500	
3. Grant towards salary of staff T. A., contingencies, etc., at Rs. 4,000 each.	Rs. 20,000	
4. Working capital at Rs. 2,000	Rs. —	10,000
	<u>Rs. 52,500</u>	<u>10,000</u>
B. Supply of improved Ghanis (3,000) 50% subsidy and 50% loan subject to a maximum of Rs. 150 grant and Rs. 150 loan per ghani.	Rs. 4,50,000	Rs. 4,50,000
C. Ghani Manufacturing Workshops big (2)		
I. Grant towards salary of		
(i) One Manager at Rs. 150 p.m.	Rs. 1,500	
(ii) One Mistri at Rs. 100 p.m.	Rs. 1,000	
(iii) One Coolie at Rs.60	Rs. 600	
(iv) One Watchman at Rs. 60 p.m.	Rs. 600	
	<u>Rs. 3,700</u>	

2. Building Rs. 7,500; 50% grant and 50% loan.	Rs. 3,750	Rs. 3,750
3. Equipment Rs. 1,000; 50% grant and 50% loan.	Rs. 500	Rs. 500
4. Working capital Rs. 5,000.		Rs. 5,000
Total for one Workshop	Rs. 7,950	Rs. 9,250
Therefore for two workshops	Rs. 15,900	Rs. 18,500

D. Ghani Manufacturing Workshops small (10). Building Rs. 2,500; 50% 50% grant and 50% loan.	Rs. 1,250	Rs. 1,250
Equipment Rs. 1,000; 50% grant and 50% loan.	Rs. 500	Rs. 500
Working capital.		Rs. 3,000
Total for one Workshop	Rs. 1,750	Rs. 4,750

Therefore for 10 Workshops Rs. 17,500 Rs. 47,500

E. Loan for providing share capital to 4,000 oilmen to enable them to purchase shares for becoming members of Co-operative Societies, subject to a maximum of 87½% for Five Shares to an oilman provided that the value of each share does not exceed rupees one hundred.

Rs. 17,50,000

F. Loan for stocking oilseeds Rs. 20,00,000

G. Training :

i. Stipend to 100 Inspector trainees at Rs. 50 p. m. for 6 months, Rs. 30,000.

ii. Stipend to 100 Mistris at Rs. 75 p.m. for 3 months	Rs. 22,500	
iii. Stipends to 1,000 Telis at Rs. 30 p.m. for 1 month	Rs. 30,000	
iv. T. A. to trainees	Rs. 30,000	
v. Grant to 4 training institu- tions for meeting expendi- ture on staff and contin- gencies at Rs. 10,200 per institution as per details given on page 101	Rs. 40,800	
		<u>Rs. 1,53,300</u>
H. Rebate on sale/production subsidy on Ghani Oil at Rs. 2½ per maund	Rs. 6,00,000	
I. Improvements and experi- ments	Rs. 10,000	
J. Propaganda, Publicity, Conference, Seminars, Symposiums, etc.	Rs. 20,000	
K. Sheds for 500 ghanis @ Rs. 250 grant and Rs. 250 loan, per shed	Rs. 1,25,000	Rs. 1,25,000
Grand Total	<u>Rs. 14,44,200</u>	<u>Rs. 44,01,000</u>

* Actual fare for 3rd class by Railway or the lowest class available by any mode of transport including Tonga, bus charges plus incidental expenses during the period of journey at Rs. 2 per day for both forward and return journey.

The sheds to be constructed will be the property of the Commission. It would, however, be open to the Co-operative Societies, Registered Institutions, etc., to purchase the same at a price to be fixed by the Commission.

The production subsidy/rebate on sales of Village (Ghani) Oil will be on the conditions mentioned below :

- a. The rebate would be paid at Rs. 2.50 per maund of oil crushed by Ghanis registered by the Commission and sold on retail basis through registered Co-operative Societies or recognised public Institutions – the term 'recognised public institution' meaning the Institutions recognised by the commission. For the purpose of the retail sale basis, the details of the limits etc., will be worked out by the Commission and communicated to the Centres in the form of instructions for payment of rebate.
- b. Rebate would also be admissible in the case of oil produced by registered ghanis and sold through certified Khadi Bhandars and Village Industries Shops.
- c. Sellers will be asked to maintain tally cards showing the purchase of oil seeds, quantity of oil produced and sales of oil to co-operative societies or institutions referred to in clause (a) above.
- d. The Commission's staff will check the sales accounts of the Co-operative Societies or Institutions which will maintain accounts of sales effected by them out of oil crushed by registered ghanis.
- e. On the strength of the certificate issued by the Commission's staff, the Societies or the Institutions will claim from the Commission the amount of rebate allowed by them.

- f. Master telis engaging a number of ghanis will not be entitled to subsidy.
- g. Self-consumers getting their own oilseeds crushed by registered ghanis will be entitled to this subsidy provided they transact the business through Co-operative Societies or Institutions.

Details of grant of Rs. 10,200 (Rupees ten thousand and two hundred only) to Training Institution for meeting expenditure on staff and contingencies:

a. One Manager on Rs. 200 per month consolidated for 12 months.	Rs. 2,400
b. Three Mistris on Rs. 100 per month consolidated each for 12 months.	Rs. 3,600
c. Two telis on Rs. 75 per month consolidated each for 12 months.	Rs. 1,800
d. One peon at Rs. 75 per month consolidated for 12 months.	Rs. 900
T. A.	Rs. 500
Contingencies	Rs. 1,000
Total	<u>Rs. 10,000</u>

10. HANDMADE PAPER INDUSTRY

Present per capita consumption of paper in India is only 1.9 lbs. per year. Of the total population of 370 millions, only about 18 per cent is at present literate. The per capita consumption of paper is bound to rise with the spread of literacy. The expansion of the mill-made paper industry is limited due to several factors, e. g.,

1. non-availability of raw materials in large quantities at one place,
2. bamboo is becoming dearer and dearer as it is used more and more for other industrial and building purposes,
3. Import of heavy and intricate machinery presents a complex problem,
4. the paper mills have to depend upon imported pulp,
5. the mill industry requires large quantity of costly imported chemicals,
6. transport facilities for raw materials abundantly available in remote parts in India, are limited, and
7. adequate water and hydro-electric power are not available at all places,

The Handmade Paper Industry, however, can be started anywhere for the following reasons :

1. raw materials locally available in small quantities can be utilised; (there are about 200 kinds of raw materials useful for pulp);

- ii. the machines and equipment can be manufactured by small workshops even in towns and villages
- iii. labour is abundantly available in villages and small towns;
- iv. an ordinary trained labourer can manufacture good quality of all sorts of paper;
- v. centres can be started with small quantity of water and electricity or oil engine, or bullock power available locally;
- vi. per capita investment is very small i. e., about Rs. 1,500 while in mill industry it is not less than Rs. 20,000.
- vii. the industry can provide employment to thousands of people, and
- viii. the scope for the handmade paper industry in the country is enormous.

The present backward condition of the handmade paper industry may largely be attributed to the absence of facilities to carry out improvements in the manufacturing techniques. If this aspect of the industry is given sufficient attention and research facilities are made available to the persons engaged in it, the industry can be developed to meet a substantial portion of the domestic demand for paper and provide employment to a large number of persons.

The programme of production to be successful will need the following policy requirements :

1. prohibition of imports of such varieties of paper as can be manufactured by the cottage sector in the country.
2. prohibition of Indian mill production of particular varieties of paper such as card board, grey board,

drawing, bond and blotting paper, which can be produced by the cottage industry.

3. prohibition of imports of paper beyond 40,000 tons a year.

The development programme of the Commission provides for assistance to four types of manufacturing units; these are :

- I. Big Units,
- ii. Medium Units,
- iii. Small Units :
 - a. Production Unit (Rs. 15,000) or Jail Unit.
 - b. Training-cum-Production Unit (Rs. 7,500)
 - c. Home Unit.
- iv. School Unit.

I. Big Unit : Where there are large numbers of hereditary or traditional Kagazis, or where Government and/or Co-operative Societies undertake production, this type of unit can be worked economically, provided plenty of soft water, Pucca building, adequate supply of raw materials (new tailors cutting, hosiery cutting, waste paper), chemicals, electricity and cheap transport facilities, skilled labourers, etc., are available in plenty.

In this case an initial investment of Rs. 1,20,000 would be necessary out of which Rs. 60,000 would be for building, and the remaining amount of Rs. 60,000 would be required for machinery and equipment which would be offered by the Commission on 50% loan and 50% subsidy basis.

The unit aims at manufacturing high grade paper such as rag, bond, drawing, ledger, superior grade of filter paper, etc. The yearly production of the unit working one shift would be 25 tons of paper worth Rs. 1,40,000. The unit will provide employment for 60 to 100 persons.

2. Medium Unit: This type of unit can be started in a city or town where electric or mechanical power is available. It could produce in the initial stage common grade paper, but after sufficient training to the workers, it will switch over to high grade paper. The total initial expenditure required will be Rs. 60,000 out of which 50% will be for machinery and equipment and the rest for building. The unit is expected to produce 10 to 12 tons of high grade paper or 30 tons of utility or common grade paper. The employment will be 25 to 50 persons per shift. The estimate is for one shift. If it is run in two or more shifts, the production will be increased in proportion. The raw material required will be as that of the big unit.

3. Small Unit : (a) Production Unit: Where there are no facilities for development of a large or medium size centre and only limited supply of raw materials like waste paper, old rags, straw, grasses etc. this type of unit can conveniently be started to utilise the local raw material. The product will be sold to local Boards, municipalities, schools, etc. Total expenditure will be Rs. 30,000 (Rs. 15,000 for building and Rs. 15,000 for machinery and equipment).

It is assumed that the unit can produce 5 tons of blotting or 10 tons of card boards, or low grade paper, per year—such as cover, file boards, grey boards, straw boards., etc., in one shift. Employment will be provided to 15 persons. This type of unit can be started in jails.

(b) Training-cum-Production Unit: Total requirement of the unit is Rs. 15,000 (50% for machinery and equipment and 50% for building).

As the unit is primarily intended for training the workers, the production will be considered as only incidental to training. In the preliminary stages, the unit will produce cover paper, blotting paper, card-sheets, etc. If regular production is

undertaken, it can produce 13 to 15 lbs. of finished writing, printing paper by using old rags, waste paper, gunny bags, straw, etc., and can provide employment to 15 persons including trainees. The unit may run on a self-supporting basis as stipends and tuition fees are made available from other sources. This type of unit is generally suitable for Mahavidyalayas and training or multi-purpose institutions.

(c) **Home Unit : (to be run by individuals)**; It was the desire of Gandhiji that handmade paper industry should be worked in the most decentralised form in homes. The smallest types of machinery have been invented for an individual to work it mechanically in the home with the help of family members and a few other hired labourers on a self-supporting basis. The Commission is also training operatives who can start centres in their own villages utilising local raw materials and labour, as far as possible. Some home units were also started by such workers trained at Wardha. On the experience gained, it is possible that hundreds of such small units can be run at places where electricity or mechanical power is available. The home unit can produce utility paper, blotting paper, card-board or such other varieties of paper which can also be marketed locally. In the Second Five Year Plan, a programme to start 400 such home units was included. The Commission is awaiting Government sanction for giving funds to individuals for this kind of smallest units. The yearly production of a home unit, will be about 3 tons valued at Rs. 5,000 giving employment to 5 to 7 persons.

4. **School Unit** : Paper-making is an ideal school craft. The raw material required, mostly waste paper, is available in schools. The products can be used in the schools themselves. Book-binding, stationery making, and envelope making are the subsidiary industries. A school unit can be started by investing a small amount of Rs. 1,700.

Two periods will be given to a class. Three classes, that

is 120 boys will work for two periods a day, and can produce 12 lbs. of finished paper per day. The boys can produce, at the first instance, blotting, cover and low grade paper. After sufficient training, they will be able to produce higher grade paper by adding 20 to 25 per cent rag pulp.

Nature Of Assistance

The assistance give by the Commission is as follows :

Machinery and Equipment :

1. **Big Unit** : Requiring Rs. 60,000 each. 50% as grant and 50% as loan, interest free and repayable in 5 years.
2. **Medium Unit**: Requiring Rs. 30,000 each. 50% as grant and 50% as loan, conditions same as above.
3. **Small Units** :

a. Production Unit (Rs. 15,000) or Jail Unit	}	50% as
b. Training-cum-Production Unit (Rs. 7,500)		grant and
c. Home Unit (for individual)		50% as loan
4. **School Unit** : Rs. 400 for cost of equipment.
Rs. 800 for cost of calendering machine.
Rs. 100 for training of craft teachers.
5. **Assistance for buildings** ; maximum 50% grant and 50% loan, equal to the cost of machines and equipment.
6. **Production-Sales Subsidy** at Rs. 250 per ton of paper actually produced if the centre has incurred losses.
7. **Jail Unit** : Services of technicians.
8. **Training** :

1. Stipend to 15 Graduate-trainees at Rs. 75	
, per month per trainee for 12 months	Rs. 13,500

ii. Stipend to 30 operator-trainees at Rs. 50 per month per trainee for 6 months	Rs. 9,000
iii. T. A. to trainees. Actual fare for III class by Railway or the lowest class available by any other mode of transport including tonga and bus charges plus incidental expenses during the period of journey at Rs. 2 per day for both forward and return journey.	Rs. 1,800
iv. Grant to training institutions	Rs. 12,000
v. Short term study course :	
a. Tuition fee to training institutions for 150 trainees at Rs. 25 per month per trainee for 2 months.	Rs. 7,500
b. T. A. to 150 trainees	Rs. 6,000
	<hr/>
	Rs. 13,500
vi. Grant to training institutions towards repairs, replacement of machinery, building, etc.	Rs. 650
vii. Grant to training institutions for purchase of books, periodicals, etc.	Rs. 500
viii. Study tours by 45 trainees	Rs. 3,600
	<hr/>
	Rs. 54,550
	Grant
8. Subsidised supply of equipment to existing or new centres acceptable to the Commission. 50% grant and 50% loan of the cost of the equipment to be purchased by the Centres.	
9. Publicity, Propaganda, Seminars, Symposiums, Conference, etc.	

10. Improvement and experiments.

11. Purchase of handmade paper, chemicals, raw material, etc., required for the manufacture of handmade paper.

12. Working capital to handmade paper manufacturing centres upto 1/5th of the value of planned production.

13. Block provision for taking up new items or additional establishment charges.

Unless otherwise provided, the funds, i. e., grants and/or loans, will be disbursed to the State Governments, Statutory State Boards, Co-operative Societies and/or Registered Institutions.

Loans for non-recurring expenditure will be re-payable within a period of five years from the date of drawal. No interest will be charged if repaid within the stipulated period either in lump sum or in instalments. Loans for working capital will be repayable within a period of 3 years. No interest will be charged during the first year. For the second and third years, interest will be charged at 3 per cent per annum.

11. GUR AND KHANDSARI INDUSTRY

The Gur Khandsari Industry, the largest agricultural processing industry, provides continuous employment for 4 to 5 months in a year not only to men and women in the rural areas, but to their bullocks also, besides, thousands of potters who prepare receptacles, and cartmen who transport its products from production centres to assembling markets and from latter to exporting mandis. It accounts for 60 per cent of the sugar-cane grown in the country. It supplies the bulk of the country's demand for sweetening agents estimated at 48 lakh tons. Its products have superior food-value and sell comparatively cheap. Given appropriate policy and aid for its phased development through improved technique and introduction of improved implements, the industry can meet the entire inland sugar demand, make crystal sugar available for export and release a part of the area under cane for cultivation of other cash and essential food crops.

The industry affects the welfare of millions of people engaged in the production of sugar-cane and gur. It strengthens the bullock economy, the mainstay of Indian agriculture, as it keeps them engaged for a longer period than any other single agricultural operation. Being essentially a decentralized industry, its expansion and development can be effected without disturbing the prevailing occupational balance in the sugar zones.

India's cottage sugar industry is an integral part of the rural economy of the sugar tracts. According to the Livestock Census of India (1951), there are 5.19 lakh kolhus in the country. The economy and social importance of the industry can be gauged from the fact that it has an employment potential of over 20.76 lakh persons and 5 lakh pairs of bullocks for 100 days in a year.

Despite its size and economic significance, the conditions of the industry as well as of the artisans engaged in it, are unsatisfactory owing partly to the inefficient tools and backward methods of production and partly to the absence of effective arrangements for bank cover, storage and marketing. The relatively low rate of extraction of juice through the present kolhus, estimated to average 55 to 60 per cent of cane crushed, the poor quality of gur produced on traditional furnaces and pans leading to higher cost of manufacture, and the absence of organised storage and marketing facilities, impose, (it is estimated) an average annual loss of Rs. 54 crores on the industry.

Rab, the raw material of Khandsari, is a twin of the Gur Industry. It can be manufactured with a very slight change in the process with the same implements without any additional expenditure. Only a centrifugal is required to convert *Rab* into Khandsari.

Recovery in the Khandsari is 6.2 per cent grade I Sugar, 1.3 per cent grade II Sugar and 5 per cent molasses - total edible material recovered being 12.5 per cent as against 10 per cent in mills. Recovery can be bettered with provision of facilities for sustained research and experiments. Khandsari molasses are edible and provide sugar in the cheapest form. They have got their own market. Unregulated competition of the mechanised large-scale sugar factories, on the one hand, and absence of planned improvement in the methods of manufacture of khandsari, on the other, have been mainly responsible for the industry's continued decay and poverty of the artisans engaged in it.

The Khandsari Industry today is considered more as a second line of defence to the manufacture of gur, rather than as an independent industry with a specialised or exclusive market of its own. Its planned development as an integral part of the sugar industry with a definite share in the total output is,

therefore, essential. Broadly speaking, the following may be cited as its crying need :

1. No import of sugar.
2. No expansion of the existing sugar mills.
3. No licence to establish any new sugar mills.
4. Reservation of its appropriate share in the total inland demand of sugar.
5. Patronage of the State.
6. Free export of the Gur and Gur powder to countries with a large Indian population.

The Commission have framed the following programme to resuscitate the industry.

1. Organisation and working of

- | | |
|----------------------|-----------------------------|
| a. Extensive Centres | 205 with 1,230 sub-centres. |
| b. Intensive Centres | 82 with 492 sub-centres. |
| c. Model Centres | 41 with 246 sub-centres. |

2. Introduction of improved implements.

3. Training of Canegrowers in the improved technique and use of improved implements.

4. Organisation, working and supervision of processing co-operative societies to take up marketing, stocking and supply of improved implements on cash or hire and hire purchase.

In order that the producer may retain gur for the use of his family and may sell it in the sellers' market, the Commission has decided to popularise specially designed godowns for stocking on a large scale and for stocking drums for storage in small quantities.

The Commission hopes to produce 7 lakh tons of Khand-sari during the Second Five Year Plan period by introducing 23,000 Centrifugals - big, medium and small.

Preliminary training is imparted by the agency working Gur-Khandsari Scheme in the States. The training is free of cost, the agency meeting the total expense on travelling, lodging, boarding, etc. On completion of training, the successful trainees are awarded a badge and scout dress as a mark of distinction. At the close of the cane season, the supervisory staff examines the work done by them and they get small honoraria as an incentive for doing so.

Such of the trainees who show special aptitude, are selected for advance training. Their training lasts upto 6 months and each trainee gets Rs. 40 to 50 per month as stipend, besides travelling expenses.

Fresh areas, new or by way of expansion, are tackled through pilot demonstration parties.

12. PALM - GUR INDUSTRY

Palm In India

In India, there are four varieties of sugar-yielding Palms—Date, Palmyra, Coconut and Sago. The total number of tappable palms in India, mostly Date and Palmyra, is estimated at over five crores.

The significance of the development of the Palm Gur Industry in India lies in the manufacture of gur and sugar from the juice of the palms, in providing seasonal employment on a large scale; and in the manufacture of utility products from palm leaf which can provide gainful subsidiary occupation throughout the year.

Secondly, it can develop an alternative perennial source of supply of gur and sugar for the growing population of the country.

Thirdly, planned and scientific planting of palm trees can not only help to prevent soil erosion and thus contribute towards the maintenance of the fertility of the soil, but also augment the supply of timber for construction of low cost houses in rural areas.

Fourthly, it can help to confine sugarcane cultivation to the area at present under cane and thus conserve fertile land for food grains like paddy.

Fifthly, it can facilitate the planned extension of the policy of prohibition by providing an alternative and gainful occupation to the tappers.

If all the five crore tappable trees were to be given over to gur manufacture, the country would stand to gain much from the wealth now lying hidden in the unexploited palms. The

and the potentialities of the Industry
present stage of development
are :

	<u>At Present</u>	<u>Potentialities</u>
	60,000 tons	15,00,000 tons
1. Annual Gur Production		
2. Total Seasonal Employment:		
a. Direct Beneficiaries (Tappers)	1,50,000	18,60,000
b. Indirect Beneficiaries (Auxiliary rural arti- sans)	85,000	5,75,000
3. Relaxation of pressure on fertile land (acres)	33,000	10,00,000

The sale of neera as a healthy drink is becoming popular and is organised extensively for providing greater employment and nutrition.

Development Programme

The development programme of the Commission is designed to prepare the ground for fuller and more extensive development of the Industry through demonstration of its potentialities and training in the processes of their economic exploitation and to facilitate the extension of prohibition throughout the country.

The programme provides for the establishment of model training-cum-production centres and research stations.

Model Centres : For the purpose of setting up model centres, the whole country is divided into traditional and virgin areas, the former refer to areas where there is already an operative Palm Gur Industry and the latter to States where palm trees exist, but there is no industry. In the traditional areas, the emphasis will be on the introduction of improved tools,

technique and processes, and demonstration of and training in the manufacture of subsidiary products from gur and sugar, and utility articles from palm leaf and fibre. The traditional areas are Madras, Kerala, Andhra Pradesh and Bengal. In the virgin areas, the model centres will demonstrate the potentialities of the industry and its capacity to provide gainful occupation during and out of season.

The nature of assistance provided by the Commission is :

- a. each model centre will be equipped with a shed, training and field staff,
- b. each model centre will be able to train 20 artisans over a period of six months, in two batches of 10 each. The training will be directed to enable the artisan to find for himself employment throughout the year, in the manufacture of palm products, in addition to seasonal employment in the manufacture of gur.

Central Institute: Besides field training, specialised training is also provided at the Central Institute (Bharatiya Tad Gud Shilpa Bhavan) at Dahanu (Bombay State). In addition to training, the Bhavan undertakes research, runs nurseries to supply palm seeds and seedlings and also a workshop for the manufacture and supply of standardised improved implements to production centres.

Pilot Stations: For investigating and demonstrating the possibilities of maximum utility of each kind of palm viz., Palmyra, Coconut, Date and Sago, four pilot model demonstration stations have been organised.

In addition to these, the Palm Gur Section of the Commission directly runs a Demonstration Stand to participate in All India Exhibitions and other means of publicity.

To implement the development programme for the Palm Gur Industry, the main policy requirements are :

1. prohibition of tapping palm trees for toddy within a radius of 5 miles from the Neera or Gur Production centres ;
2. renting out all palm trees owned by Local, State and Central Governments for the production of Palm Gur, sugar etc., at fixed nominal rates and fixation of the rent for privately-owned trees ;
3. regulation of the auctioning of Government-owned trees in accordance with the requirements of the Palm Gur Industry;
4. extension of the exemption granted to palmyra sugar from excise duty to sugar produced in vacuum pan units from the juice of Date, Coconut and Sago palm trees ;
5. as far as is feasible, priority to Palm Gur and sugar in Government purchases and a price preference of 15 per cent to encourage development of the industry ;
6. arrangements for the supply of light fuel either free or at nominal rates from the Government forests for the Palm Gur producers ;
7. expeditious grant of licences to the Palm Gur producers;
8. planned extension of the policy of prohibition throughout the country.

Financial Aid

Aid offered by the Commission is as follows :

1. Grants to State Statutory Boards subject to 50% of recurring expenditure on approved items.

2. Grants and loans to co-operative societies and registered Institutions as follows :

	<u>Grants</u>	<u>Loans</u>
	Rs.	Rs.
a. Training Unit	8,200	-
b. Propaganda Unit	6,930	-
c. Production Special (PS) Unit	22,280	18,500
d. Production 'A' Unit	6,280	2,500
e. Production 'B' Unit	2,860	1,300
f. Co-operative 'C' Unit	25	25
g. Co-operative 'D' Unit	250	250
h. Palm Products Unit	800	-
i. Palm Plantation Unit	800	-
j. Colonisation Unit	10,000	-
k. Model Neera & Sherbat 'A' Unit	38,385	18,625
l. Model Neera & Sherbat 'B' Unit	25,540	14,300
n. Model Neera & Sherbat 'C' Unit	17,510	11,850

3. Loans to co-operative societies and registered Institutions

i. working capital repayable in 3 years, interest-free for the first year and with interest @ 3% per annum during the subsequent years.

i. capital expenditure repayable in 5 years, interest-free.

4. Training :

i. For training in the Bharatiya Tad Gud Shilpa Bhavan, Dahanu, Bombay State, trainees will be given III Class Railway fare or the lowest fare by any other mode of conveyance.

ii. For training candidates sponsored by the States, scholarship @ Rs. 50 per trainee, out of which 50% expenditure will be met by sponsoring States.

- iii. For training candidates sponsored by private institutions Rs. 40 p.m. will be paid for each candidate.
- iv. Stipends @ Rs. 50 p. m. per trainee for 3 months in respect of the trainees admitted under the training scheme in the training centres spread all over the country.

Whom To Contact

Any information connected with Palm Gur Industry on an All India level can be obtained from the PALM GUR ADVISER, KHADI AND VILLAGE INDUSTRIES COMMISSION, DAHANU, BOMBAY STATE, and on the State level from the State Palm Gur Organisers (Madras, West Bengal, and Mysore, C/o Director of Industries) and the rest, C/o State Khadi and Village Industries Board.

13. HANDPOUNDING OF RICE

Rice is the most important cereal in India accounting for 35.8 per cent of the area under cereals and 44.6 per cent of their total output. According to the report of the Nutrition and Research Laboratories, rice is the staple diet of over 70 per cent of the population of India. Consequently, any measure that improves the quality of rice or augments its availability is of vital economic and nutritional importance. The development of the handpounding industry in India has, therefore, a three-fold significance.

It can provide employment on a large scale, particularly to women in the rural areas for 150 days in a year on an average ;

- ii. It can augment the availability of rice by higher percentage of recovery from paddy ; and
- iii. It can supply rice which is rich in food values and thus contribute to the improvement of the health of the population.

The development programme of the Commission envisages the transference of the total quantity of paddy processed by the mills, estimated at 15 million tons to the hand-pounding sector and introduction of improved techniques and implements and provides for

- i. the manufacture and distribution of chakki-dhenki units, improved (Assam) dhenkis and winnowing fans ;
- ii. the establishment of marketing depots to ensure the regular supply of handpounded rice to urban areas ;
- iii. training facilities for persons to organise

production, mistris to manufacture chakkis, dhenkis and other implements; and

- iv. the constitution of nutrition committees in selected urban areas mainly to popularise consumption of hand-pounded rice.

The main production unit is a Chakki-Dhenki unit capable of processing on an average 43 tons of paddy in the season and providing employment to six persons on an average. These units are to be introduced in areas where groups of handpounders can easily come together for work. A unit consists of one chakki, employing two persons, with an average capacity to dehusk 8 to 10 maunds of paddy and two-dhenkis for milling, employing two persons having an average milling capacity of 4 to 5 maunds per day.

Improved (Assam) dhenkis will be introduced mainly in areas where women prefer to work independently. Each Assam dhenki can simultaneously dehusk and mill, on average, 4 to 5 maunds of paddy per day and provide employment to two persons. Winnowing fans are proposed to facilitate large-scale commercial production of hand-pounded rice.

The phased introduction of improved implements, on the one hand, and the provision of organisational, financial and technical assistance, on the other, may together help to take over the hand-pounding of rice and provide in the process, additional employment to 26.20 lakh persons distribute Rs. 184.10 crores.

The policy implications of this allocation of production are :

- i. the gradual elimination of mills over a five-year period;
- ii. phased transfer of paddy processed by mills to the handpounding industry;

- iii. Imposition of a cess on the paddy processed by mills at the rate of 6 as. per maund;
- iv. the grant of a production subsidy to handpounders at 8 as. per maund of paddy; and
- v. provision of organised assistance to handpounders to secure improved implements in accordance with the requirements of the programme.

The aid offered by the Commission is of the following type :

Grants and Subsidies

1. Subsidy on stone chakkis at 50 per cent of the cost, subject to a maximum of Rs. 20 per chakki.
2. Subsidy on winnowing fans at 50 per cent of the cost, subject to a maximum of Rs. 60 per fan.
3. Subsidy on Dhenkis at 50 per cent of the cost, subject to a maximum of Rs. 25 per dhenki.
4. Production subsidy at 37 naye paise per maund of paddy dehusked.

Loans :

1. Loans for manufacturing and stocking chakkis and dhenkis, repayable in 3 years; interest-free for the first year and 3 per cent interest during subsequent years.
2. Loans for stockpiling paddy: conditions same as above.

ATTA CHAKKI

1. Subsidies on improved hand chakkis at Rs. 10 per chakki or 50 per cent of cost whichever is less.
2. Subsidy for fixing ball-bearings at Rs. 3 per old chakki or at 50 per cent of cost whichever is less.

The following conditions have been laid down by the Commission.

1. Unless otherwise provided, the funds, i. e., grants and/or loans, will be disbursed to the State Governments, Statutory State Boards, Co-operative Societies and/or Registered Institutions
2. Loans for non-recurring expenditure will be repayable within a period of five years from the date of drawal and no interest shall be charged thereon if repaid within the stipulated period either in lump sum or in instalments.
3. Loans for working capital will be repayable within a period of 3 years. No interest will be charged during the first year. For the second and third years, interest will be charged at 3 per cent per annum.
4. The production subsidy will be paid subject to the following conditions, to such of the Co-operative Societies, Registered Institutions, etc., as need assistance in that behalf:
 - i. The average subsidy will not be more than 6 annas or 37 Naye Paise per maund of paddy dehusked.
 - ii. The disbursement of subsidy is limited only to such Co-operative Societies, Registered Institutions, etc., as are functioning in areas where rice mills are concentrated and thereto where competition is very acute. In other areas no subsidy will be given.
 - iii. The rate at which subsidy, etc., is paid to a Society will not exceed the difference between the wages charged by the said Society, etc., for handpounding of rice and the charges usually made by the rice mills in that area. A certificate from the Director of Village Industries and Co-operation of the Khadi

and Village Industries Commission to the effect that the subsidy paid to a particular Society, etc., has not exceeded the difference mentioned above shall be treated as conclusive.

The equipment mentioned above shall be given to Co-operative Societies, Registered Institutions, etc., provided they enter into an agreement to the effect that the equipment will remain the property of the Commission for a period of three years and the question of passing on ownership of those assets to the Societies concerned will be considered after that period, provided the Commission is satisfied that the performance has been satisfactory during that period. Pending the formation of Co-operative Societies, the equipment may be placed at the disposal of the village workers through the Commission's Organisers who should ensure that the equipment is not put in wrong hands and that the Commission's property would be safe. The actual execution of the agreement should be done immediately after formation of the Co-operative Societies.

14. FIBRE INDUSTRY

India abounds in several kinds of raw materials which yield fibres. These fibres are turned into ropes and strings of various sizes and put to a variety of uses. Experiments have been carried on over a number of years in Khadi Pratisthan in Sodepur near Calcutta and in Dharwar on fibre spinning and in the manufacture of cotton and gur pats. Implements for the purpose have also been evolved and developed. The Khadi and Village Industries Commission has taken up fibre and fibre products for development. The scheme is divided into three parts :

1. manufacture of jute twists in jute growing areas like Bengal.
2. use of sisal, hemp, ambadi, etc., for making cotton and gur pats, cords, strings, ropes.
3. manufacture of door mats, chari mats, carpets, etc., out of moonj grass.

Training In Jute Twists : The programme envisages the training of persons in this industry at the Khadi Pratisthan.

Cotton And Gur Pats : The Bombay Village Industries Board have devised wheels for spinning of yarn required for the manufacture of cotton and gur pats. The training course in the industry is of 4 months. A stipend of Rs. 40 per month will be paid to each trainee. The institution undertaking the training will be paid a tuition fee at Rs. 3 per trainee per month.

After completion of their training, these trainees will be sent to villages to train other villagers. Every instructor will take up 8 villages for training for about 3 months. The villager-trainees will be paid a stipend of 8 annas per day in the first month, 6 annas a day in the second month, 4 annas a day in the third month. Only such villagers as grow necessary raw material

would be selected. On completion of their training the trainees will start work in their own houses under the guidance of instructors.

Moonj Grass Spinning And Weaving : The spinning wheel devised at Sodepur can also be used for spinning moonj grass into yarn suitable for weaving of door-mats, carpets, etc. This grass grows plentifully all over India. The training course is of three months. The trainees would be given stipend of annas 12 per day for three months.

Grants :

1. Grant to Training-cum-Production Centre at Rs. 1,000 per centre.

Training :

Stipends to trainees at Rs. 30 p.m. per trainee. Tuition fee at Rs. 25 p.m. per student, T. A. at actual 3rd Class Railway fare.

Loans

Loans for purchasing and marketing the 'pats' produced at Commission's Centres repayable in 3 years; interest-free for the 1st and 2nd years and with interest at 3 per cent during the subsequent years.

Financial Assistance

Grants	Rs. 1,47,600
Loans	Rs. 1,00,000

Unless otherwise provided, the funds i.e., grants and/or loans, shall be disbursed to the State Governments, Statutory State Boards, Co-operative Societies and/or Registered Institutions.

The loan to each individual Society and/or Registered Institution shall not exceed Rs. 5,000.

Loans for non-recurring expenditure shall be repayable within a period of five years from the date of drawal and no

Interest shall be charged thereon if repaid within the stipulated period either in lump sum or in instalments. Loans for working capital shall be repayable within a period of 3 years. No interest shall be charged during the first year. For the second and third years, interest will be charged @ 3% per annum.

Item of Expenditure :	Grant (Rs.)	Loan (Rs.)
A. Training of Instructors (60)	18,600	
i. Stipend to 60 Instructor-trainees @ Rs. 40 p. m. per trainee for 4 months.	Rs. 9,600	
ii. Tuition fees @ Rs. 25 p. m. per trainee for 4 months.	Rs. 6,000	
iii. T. A. to trainees.	Rs. 3,000	
	<hr/>	
	Rs. 18,600	
Actual fare for 3rd class by rail or the lowest class available by any other mode of transport including Tonga and Bus charges plus incidental expenses during the period of journey at Rs. 2 per day for both forward and return journey.		
B. Training in manufacture of cotton pats, short term course (50 Centres), expenditure per Centre @ Rs. 600	30,000	
i. Salary of one instructor @ Rs. 75 p.m. for 1½ months.	Rs. 112.50	
ii. T. A.	Rs. 30	
iii. Stipend to 8 Trainees @ Rs.15 p.m. per trainee for 1½ months.	Rs. 180	

iv. Rent, contingencies, transport charges and other miscellaneous expenditure.	Rs: 147.50
v. Subsidy on Implement.	Rs. 130
	<hr/>
	Rs. 600
	<hr/>
Therefore, for 50 Centres	Rs. 30,000

C. Training in manufacture of cotton pats (full term course) (90 Centres) expenditure per Centre @ Rs. 1,100	99,000
i. Salary of one Instructor @ Rs. 75 p.m. for 2 months.	Rs. 150
ii. T. A.	Rs. 30
iii. Stipend to 8 trainees @ Rs. 20 p. m. per trainee for 2 months.	Rs. 320
iv. Rent, contingencies transport charges and other miscellaneous expenditure.	Rs. 100
v. Cost of Implement.	Rs. 500
	<hr/>
	Rs. 1,100
	<hr/>
Therefore, for 90 Centres	Rs. 99,000

D. Loans to State Governments, Statutory State Boards, Co-operative Societies and/or Registered Institutions for purchasing, stocking and marketing raw materials, implements and fibre pats.	Rs. 1,00,000
	<hr/>
Grand Total	Rs. 1,47,600 Rs. 1,00,000

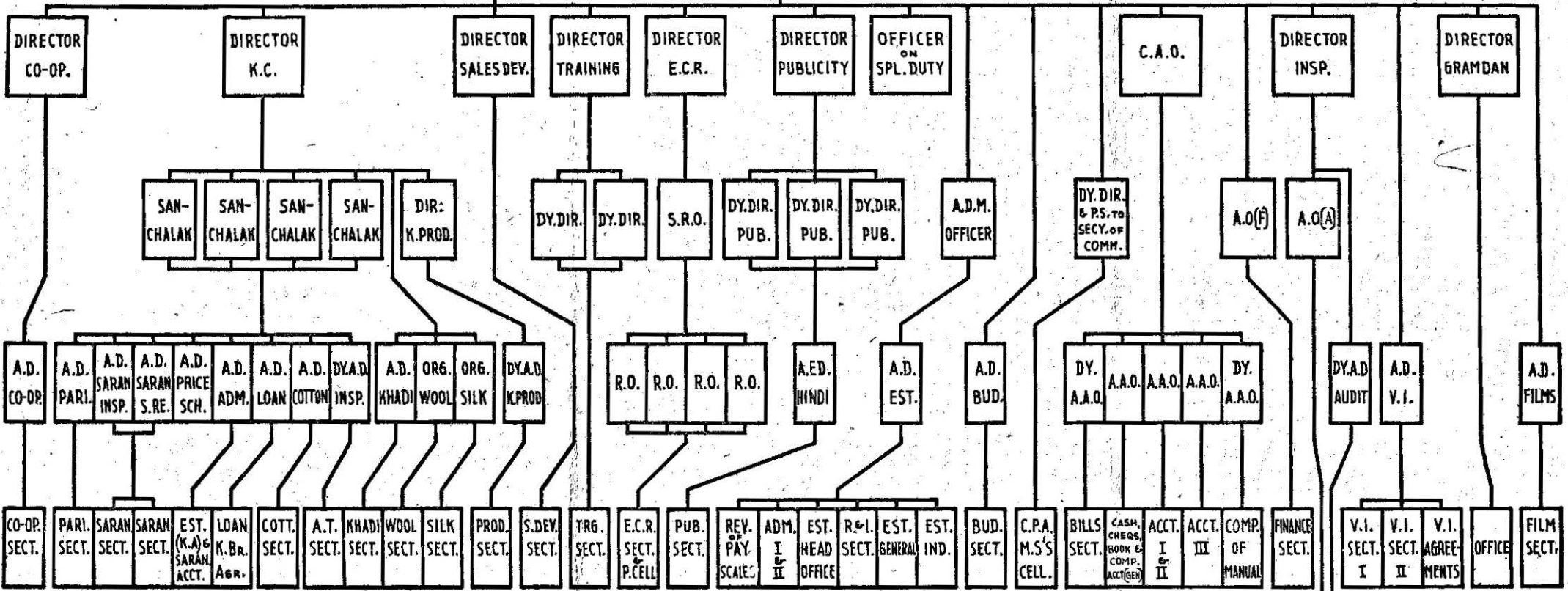
MEMBER I/C SALES DEV. & EMPORIA

KHADI & VILLAGE INDUSTRIES COMMISSION.

— WITH — FINANCIAL ADVISER

CHIEF EXECUTIVE OFFICER.

DEPUTY C.E.O.



K.C. = KHADI CO-ORDINATION.

E.C.R. = ECONOMIC RESEARCH.

C.A.O. = CHIEF ACCOUNTS OFFICER.

S.R.O. = SENIOR RESEARCH OFFICER.

A.O(F) = ACCOUNTS OFFICER (FINANCE).

A.O(A) = ACCOUNTS OFFICER (AUDIT).

R.O. = RESEARCH OFFICER,

PARI = PARISHRAMALAYA.

SARAN = SARANJAM.

P. CELL = PARLIAMENTARY CELL.

M.S.S. CELL = MEMBER SECRETARY'S CELL.

COMP. = COMPILATION.

INTERNAL AUDIT PARTIES																				
PRE AUDIT A	PRE AUDIT B	PRE AUDIT C	1	2	3	4	5	6	7	8	9	10	11	12	13	14	15	16	BOMBAY BHARWAR'S	INT. AUDIT OBJ. SECT.
			BOMBAY						AMBALA	MEERUT	JAIPUR	UJJAIN	PATNA	CAL- CUTTA	KAKI- NADA	TIRUPUR	DHAR- WAR	NEW DELHI	VASTRAGARS	

VILLAGE INDUSTRIES
(FIELD OFFICES)

KHADI & VILLAGE INDUSTRIES COMMISSION.

CHIEF EXECUTIVE OFFICER.

DEPUTY C.E.O.

MEMBER
IN-CHARGE
PROC.&H.P.P.

MEMBER
IN-CHARGE
VILLAGE OIL

MEMBER
IN-CHARGE
C.MATCH

MEMBER
IN-CHARGE
I.A.SHEME

MEMBER
IN-CHARGE
R.I.WARDHA

ORGANISER
PROC.&H.P.P.

ORGANISER
V.OIL

DIRECTOR
LEATHER

ORGANISER
C.MATCH

ORGANISER
GUR & KH.

PALM GUR
ADVISER

ORGANISER
SOAP

ORGANISER
BEE KEEPING
& FIBRE

ORGANISER
V.POTTERY

ORGANISER
I.A.SHEME

DY. DIR.
R.I.

ORGANISER
H.M.PAPER

DY. ORGR.
PROC.&H.P.P.

DY. ORGR.

DY. PALM GUR
ADVISER

DEPUTY
ORGANISER

DY. ORGR.

DEPT.
HEADS.

ASST. INGR.
ASST. ORGR.
ASST. ORGR.
ASST. ORGR.

REGIONAL ORGR.
ASST. ORGR.
ASST. ORGR.
ASST. ORGR.
ASST. ORGR.
ASST. ORGR.

ASST. T.O.
(L)

ASST. ORGR.
ASST. ORGR.

ASST. C.GUR
ADV.

ASST. P.GUR
ADV.

ASST. P.GUR
ADV.

TECH.
DIR.

ASST. ORGR.
ASST. ORGR.

ASST. ORGR.

EIGHT
DEVELOPMENT
OFFICERS.

FOUR
REGIONAL
ORGANISERS

OFFICE
SECY.

PROC. & H.P.P.
IND. OFFICE
NADIAD.

V.OIL IND.
OFFICE
N.DELHI.

DY. A.D.
LEATHER

V.LEATHER IND.
OFFICE
BOMBAY.

C.MATCH IND.
OFFICE
SODEPUR.

GUR & KH. IND.
OFFICE
KANPUR.

P.GUR IND.
OFFICE
DAHANU.

SOAP IND.
OFFICE
BOMBAY.

B.K. & FIBRE
IND. OFFICE
DHARWAR.

V.POTTERY
IND. OFFICE
BOMBAY.

FIFTY
ORGANISERS

FIFTY ASST.
ORGANISERS

I.A.SHEME
OFFICE
N.DELHI.
A.P.

RESEARCH
INSTITUTE
WARDHA.

H.M.PAPER
IND. OFFICE
BOMBAY.

A.P. = AUDIT PARTY.

ZONAL ORGANIZATIONS
TRADITIONAL KHADI, AMBAR AND INDUSTRIES.

KHADI & VILLAGE INDUSTRIES COMMISSION.

CHIEF EXECUTIVE OFFICER

DEPUTY C.E.O.

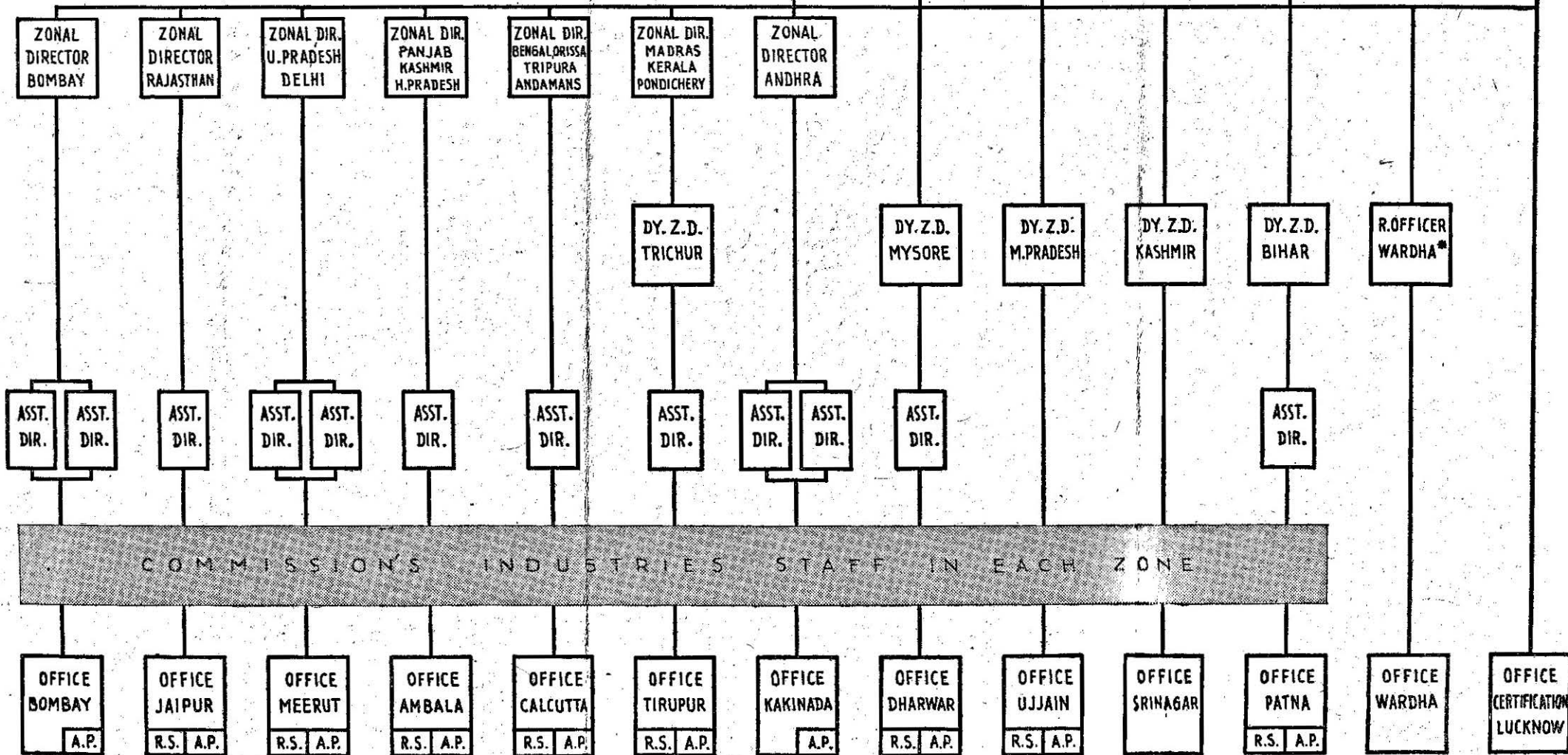
DIR. KHADI CO-ORDINATION.

MEMBER
I/C
Z-MYSORE

MEMBER
I/C
Z-M.PRADESH

MEMBER I/C
Z: BIHAR
ASSAM, MANIPUR
N.E.F.A.

CHAIRMAN
CERTIFICATION
COMMITTEE



COMMISSION'S INDUSTRIES STAFF IN EACH ZONE

R.S. = REBATE SECTION. A.P. = AUDIT PARTY. * BOMBAY, ANDHRA, KASHMIR AND OTHER TRADING CENTRES ONLY.

**Printed by Kishorlal Lalji Ganatra at TREND PRINTERS,
Swadeshi Mills Estate, Girgaum, Bombay-4.**