

REPORT

ON

PUBLIC INSTRUCTION IN BENGAL

FOR 1909-1910.



CALCUTTA:

THE BENGAL SECRETARIAT BOOK DEPOT.

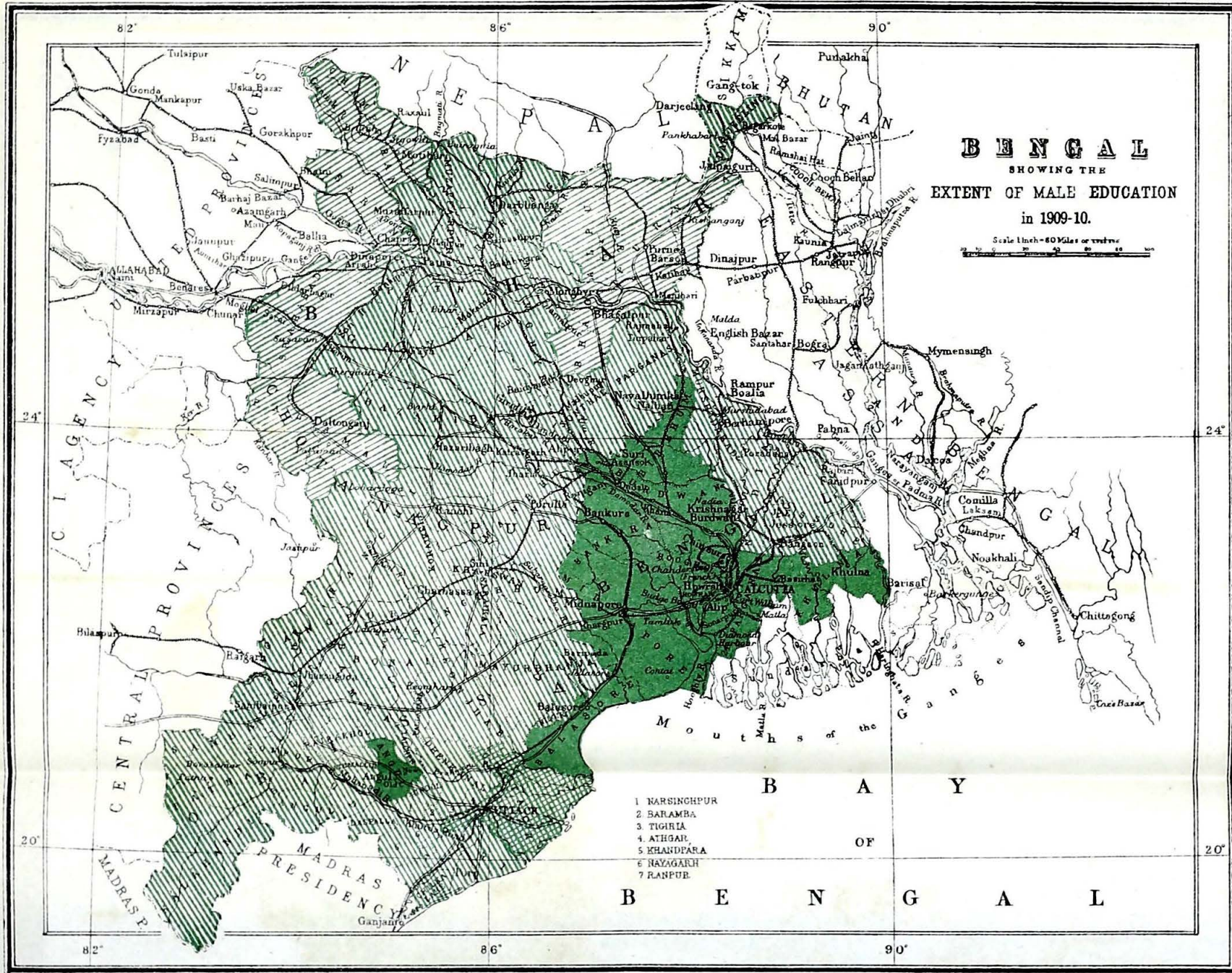
1910.

[Price—Indian, Rs. 2-8; English, 3s. 4d.]

CONTENTS.

	Page.
CHAPTER I.—INTRODUCTORY.	
Reconciliation	1
General Statistics	1
CHAPTER II.—CONTROL.	
Educational Services	2
Direction	3
General Inspecting Agency	3
Special Inspectors	5
CHAPTER III.—COLLEGIATE EDUCATION.	
Statistics	7
Government Colleges—	
Presidency College	8
Patna College	9
Ravenshaw College, Cuttack	9
Hooghly College	10
Krishnagar College	11
Sanskrit College	11
The Bethune College	11
Professional Colleges	11
CHAPTER IV.—SECONDARY EDUCATION FOR INDIAN BOYS.	
Scope	11
Improvements	11
Statistics	13
High Schools	13
Examinations	15
Middle Schools	15
CHAPTER V.—PRIMARY EDUCATION FOR INDIAN BOYS.	
Statistics	16
Teachers and their Remuneration	18
Revised Syllabus—Examination and Scholarships	20
Free Primary Education for Depressed Classes	21
Night Schools and Night Continuation Schools	21
CHAPTER VI.—THE TRAINING OF TEACHERS FOR INDIAN SCHOOLS.	
Scope	22
Training Colleges	23
Training Schools for Vernacular Masters	24
Guru-training Schools	26
CHAPTER VII.—PROFESSIONAL AND TECHNICAL EDUCATION.	
Law	27
Pleaders' Survey Examination	27
Engineering, Weaving, etc.—	
Civil Engineering College, Sibpur	28
Mining—	
Mining classes in the Civil Engineering College	28
Mining Instruction in the Mining Districts	29
Bihar School of Engineering	29
Cuttack Survey School	30
Government Weaving Institute, Serampore	30
Minor Technical and Industrial Schools	31
Commerce—	
The Government Commercial Classes	31
Art—	
The School of Art, Calcutta	31
Joint Technical Examination Board	32
Technical Education in Collegiate and High Schools	33
Agricultural Education	33
Reformatory School, Hazaribagh	33
CHAPTER VIII.—THE EDUCATION OF INDIAN GIRLS AND WOMEN.	
Statistics	34
The Bethune College	35
High Schools	35
Middle Schools	36
Primary Schools	36
Zanana Teaching	37
Special Measures for encouragement of Female Education in Bihar	38
Industrial Education	38
Training of Teachers	38
Training of Elementary Teachers for Village Schools	40
Need of Training for High School Teachers	41

	Page.
CHAPTER IX.—THE EDUCATION OF EUROPEANS.	
The New Code	41
Statistics	42
Government Institutions at Kurseong	42
Examinations	43
Law and Medicine	44
Arts Colleges	45
CHAPTER X.—THE EDUCATION OF MUHAMMADANS.	
Statistics	45
Schemes for Improvement—	
I.—Improvement of Madrasas	46
II.—Improvement of Maktabas	46
Government Madrasas	47
Education of Muhammadan Girls and Women	47
CHAPTER XI.—THE EDUCATION OF SPECIAL CLASSES.	
Education of Chiefs and Nobles	48
Education of Aborigines	48
Education of the Indigent Classes	48
Tea Garden Schools	49
Colliery Schools	49
Education of Defectives	49
Reformatory Schools	49
CHAPTER XII.—PRIVATE INSTITUTIONS	
	50
CHAPTER XIII.—PHYSICAL AND MORAL TRAINING.	
Scope	50
Hostels	50
Physical Training	52
Discipline	53
Social Influences	54
CHAPTER XIV.—EDUCATIONAL CONFERENCES	
	54
CHAPTER XV.—TEXTBOOKS.	
Preparation of Textbooks	55
Textbook Committees	56
The Calcutta School Book Society	56
CHAPTER XVI.—SUMMARY AND GENERAL REMARKS—	
SUMMARY FOR THE YEAR 1909-1910	56
General Remarks	60
General Statistics	60

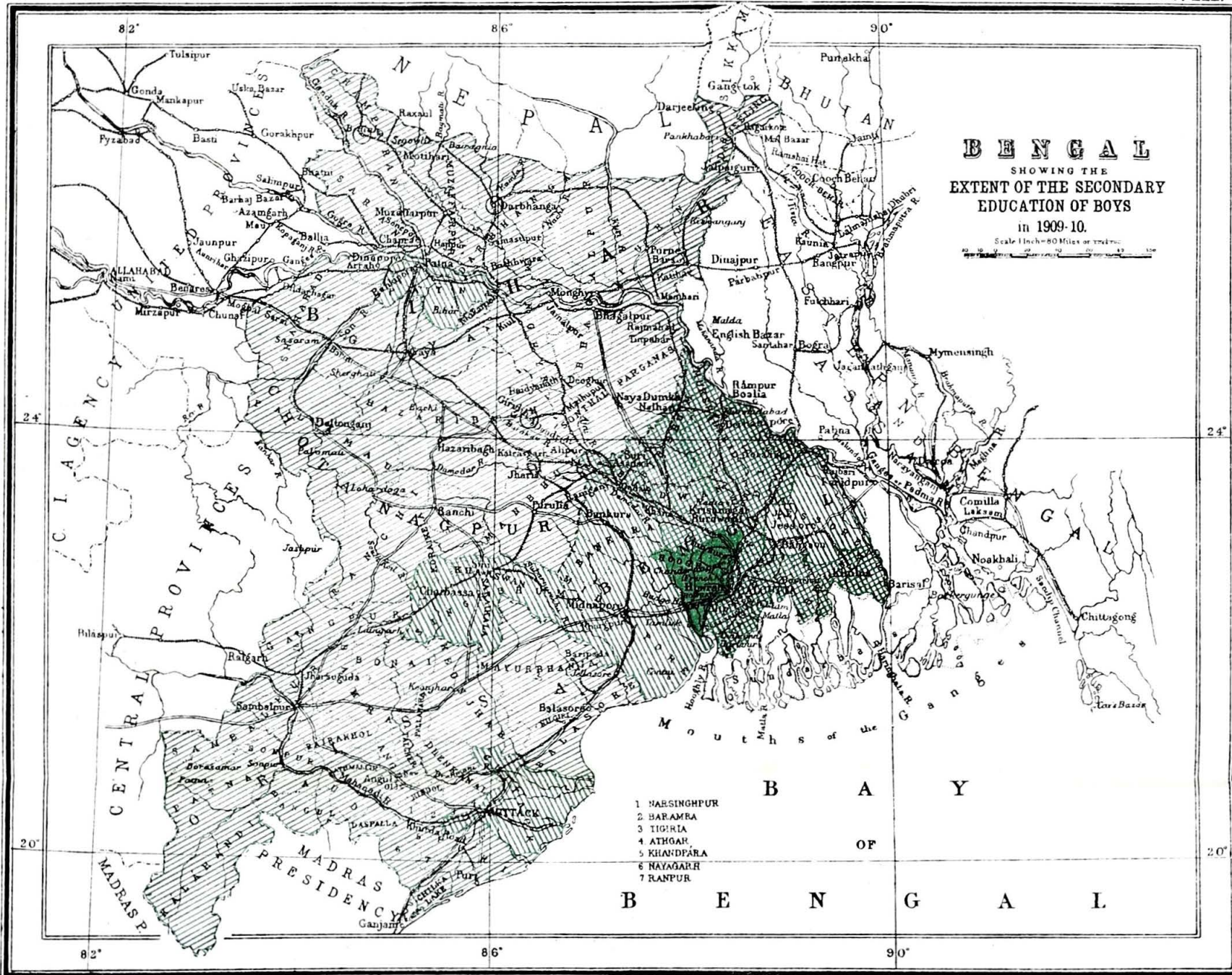


(Excluding Schools for Europeans)

REFERENCES.

Percentage of children of school-going
age under instruction—

- Class I. Above 25 per cent. [Solid Green]
- .. II. Between 20 and 25 [Diagonal Lines /]
- .. III. ,, 10 and 20 [Diagonal Lines \]
- .. IV. ,, 10 and 6 [Cross-hatch]

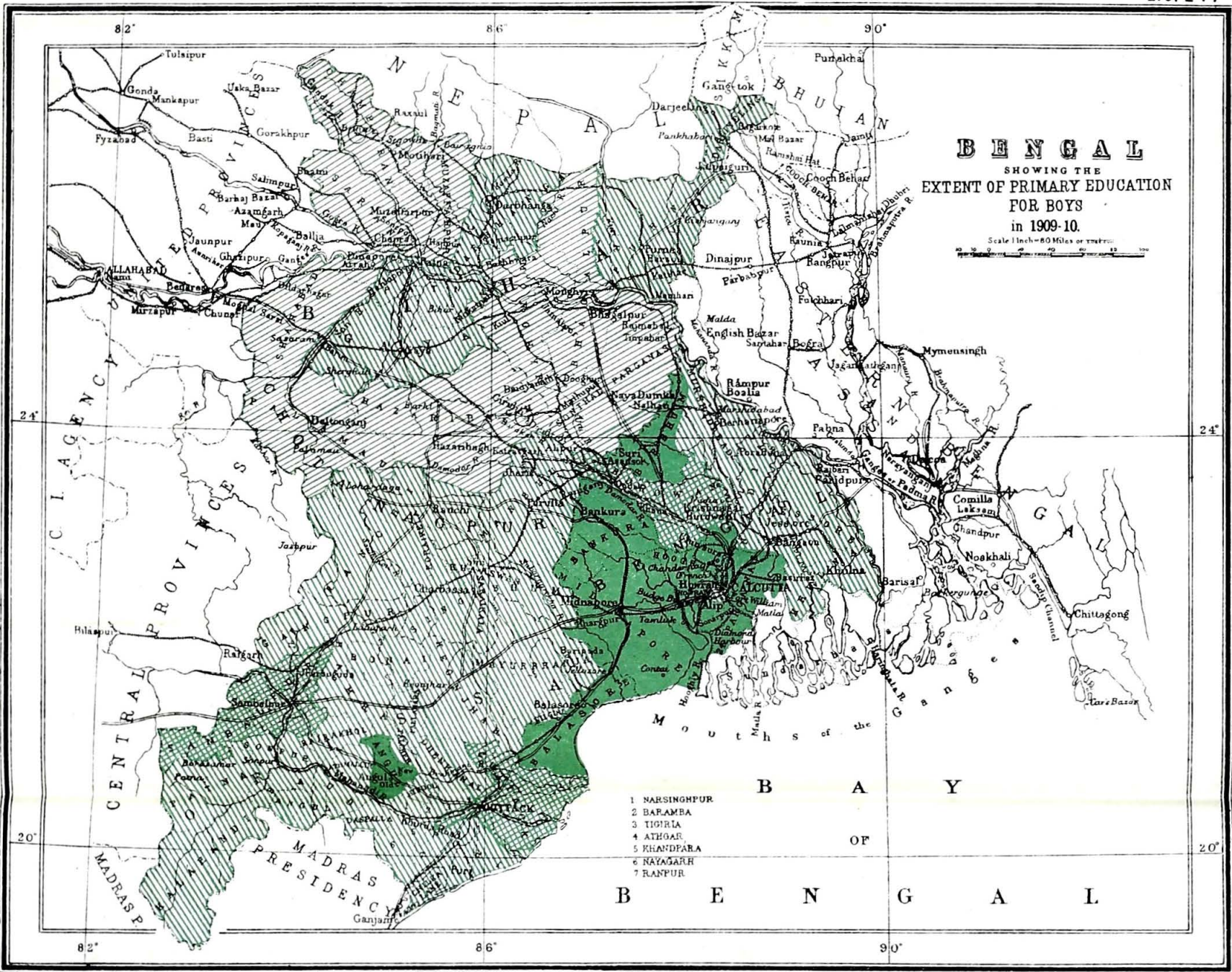


(Excluding Schools for Europeans.)

REFERENCES.

Percentage of boys of school-going age who are in the Secondary stage of instruction—




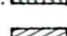
- Class I. Above 5 per cent.
- " II. Between 3 and 5 "
- " III. Between 1 and 3 "
- " IV. Below 1 "

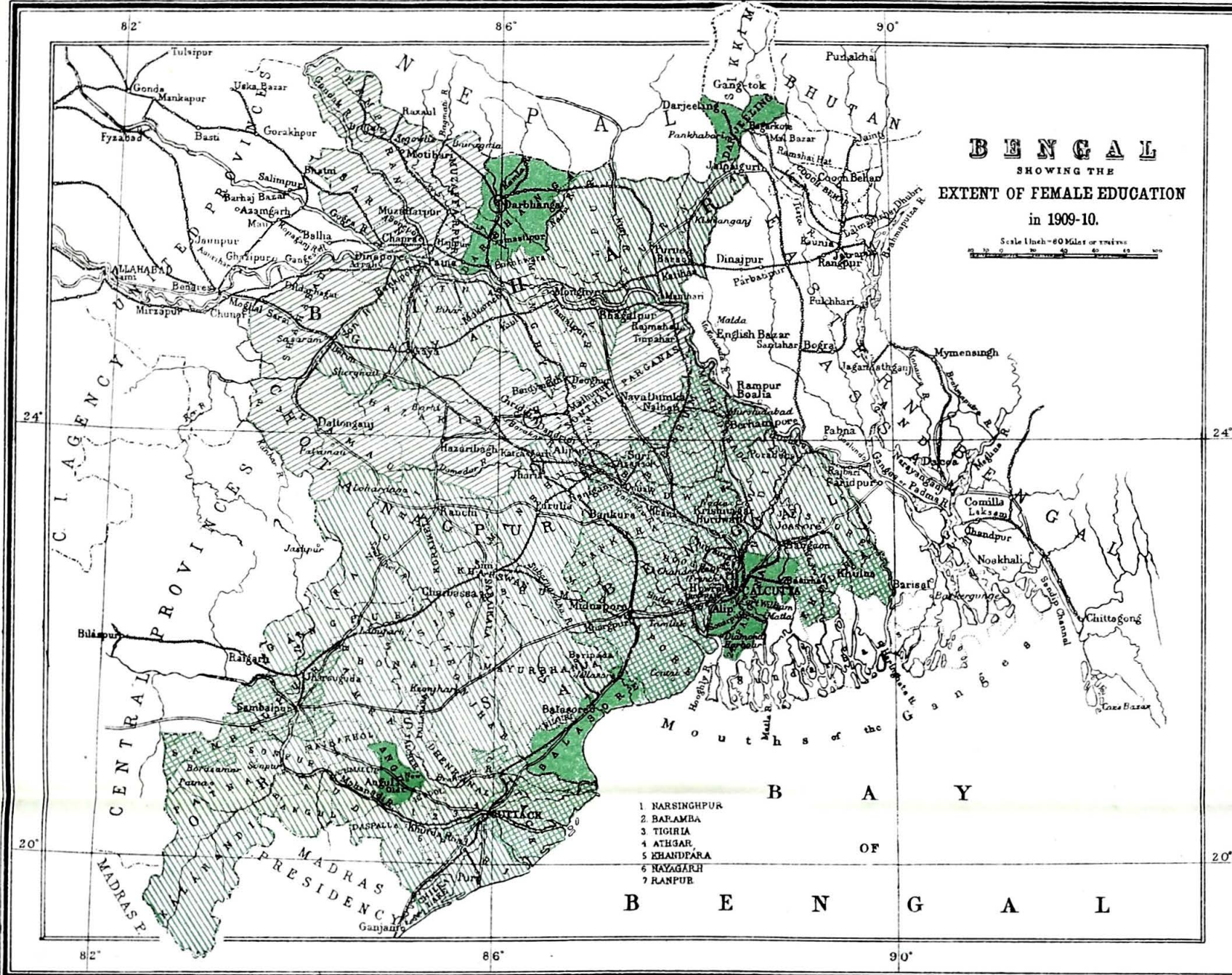


(Excluding Schools for Europeans.)

REFERENCES.

Percentage of boys of school-going age who are in the Primary Stage of instruction—

Class I.	Above 40 per cent.	
" II.	Between 30 and 40	
" III.	" 20 and 30	
" IV.	" 10 and 20	



B E N G A L
 SHOWING THE
EXTENT OF FEMALE EDUCATION
 in 1909-10.

Scale 1 inch = 60 Miles or 100 Miles

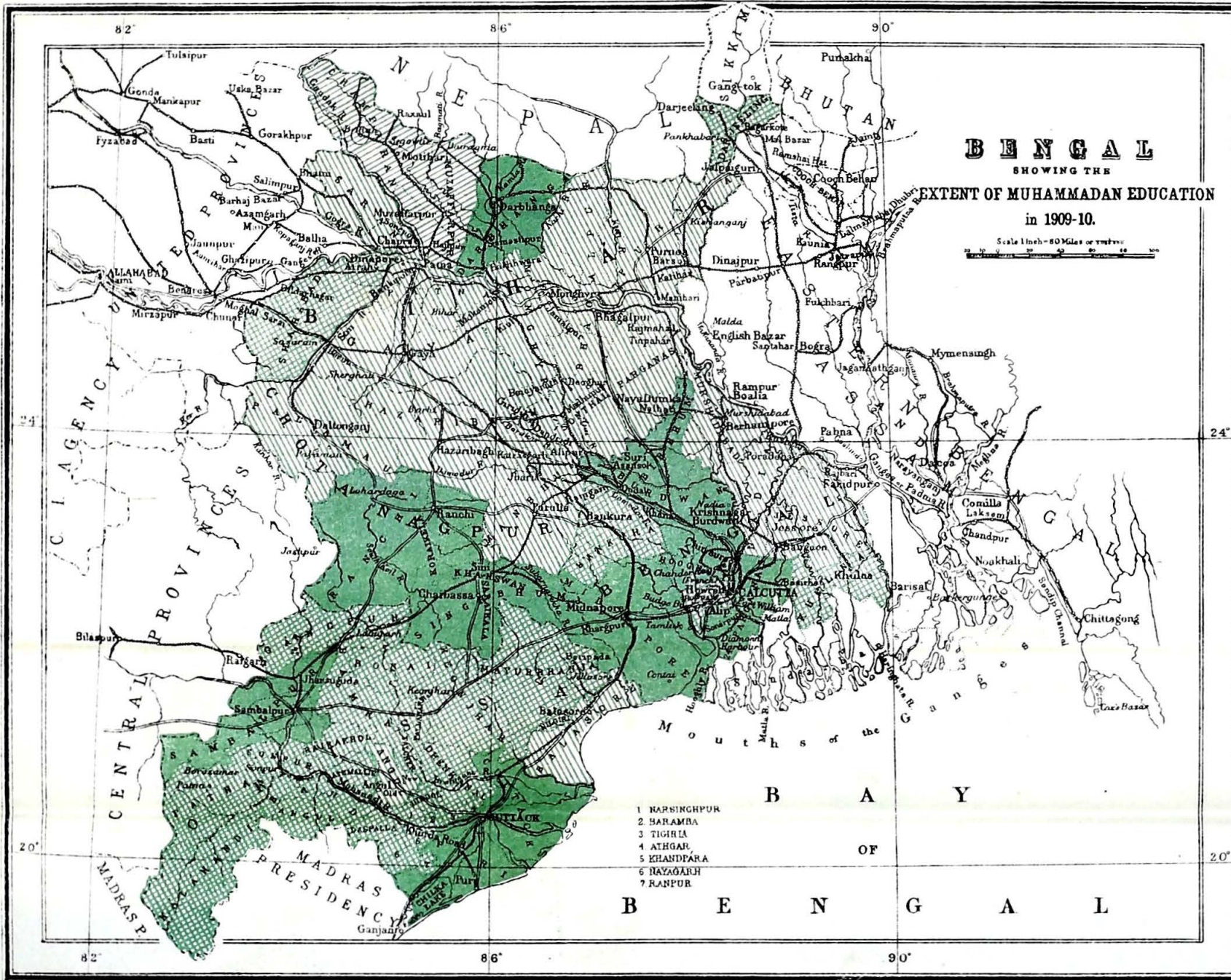
(Excluding Schools for Europeans)

REFERENCES.

Percentage of girls of school-going age
 who are under instruction—

- Class I. Above 7 per cent. [Solid Green Box]
- .. II. Between 4 and 7 „ [Cross-hatched Box]
- .. III. „ 2 and 4 „ [Diagonal Lines Box]
- .. IV. Below 2 „ [Horizontal Lines Box]

- 1 NARSINGHPUR
- 2 BARAMBHA
- 3 TIGIRIA
- 4 ATHGAR
- 5 KHANDPARA
- 6 NAYAGARH
- 7 RANPUR



BENGAL

SHOWING THE
EXTENT OF MUHAMMADAN EDUCATION
in 1909-10.

Scale 1 inch = 50 Miles or 80 Kilometres

(Excluding Schools for Europeans.)

REFERENCES.

Percentage of Muhammadan pupils of school-going age who are under instruction—

- Class I. Above 25 per cent.
- „ II. Between 20 and 25 „ „
- „ III. Between 10 and 20 „ „
- „ IV. Below 10 „ „

- 1 NARSINGPUR
- 2 HARAMBA
- 3 TIGRIA
- 4 ATHGAR
- 5 KHANDPARA
- 6 NAYAGARH
- 7 RANPUR