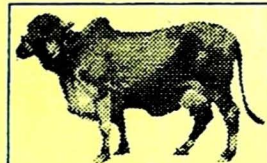




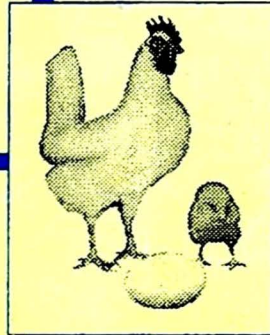
# GOVERNMENT OF MAHARASHTRA DEPARTMENT OF ANIMAL HUSBANDRY INTEGRATED SAMPLE SURVEY SCHEME

Report on Estimation of Milk, Egg, Wool, Meat Production and  
Livestock & Poultry Keeping Practices  
In Maharashtra State For the Year

2012 - 2013



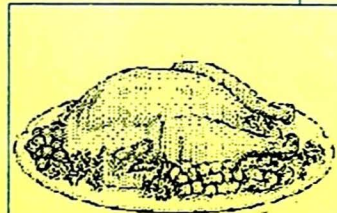
MILK



EGG



WOOL



MEAT

S



Integrated Survey Scheme,  
Report On

Milk, Egg, Wool, Meat Production And  
Livestock & Poultry Keeping Practices In  
Maharashtra State For the Year

2012-13

**Department of Animal Husbandry, Maharashtra State, Pune-411007.**

## PREFACE

Livestock plays an important and supplemental role to the development of agrarian rural economy of the State. It has been an established fact that, flow of income to the owners through livestock production is continuous throughout the year irrespective of season. Animal Husbandry and the livestock production is thus, playing a vital role in the sustainable economic up-liftment of the rural masses. With this in mind, Animal Husbandry Department is framing and implementing policies for genetic up gradation of the livestock for insuring the desired growth in livestock production in Maharashtra State. In order to assess the impact of these programs and policies ; there is obviously, a need to have estimates of production of Major Livestock Products such as Milk, Eggs, Meat and Wool with an objective interpretation and well within the scheduled time frame. To meet this need, the Integrated Sample Survey scheme for estimation of these major livestock products is being implemented in Maharashtra State from the year 1970 -71.

The present Forty-Three annual report exhibits the data collected during the year 2012-13. Analysis of this data furnishes an elaborative and fundamental information about the livestock, livestock products, feeding and management practices , utilization pattern of the livestock products etc. in the state.

This study is a part of the pre-investment survey which is proposed to be continued in future. It aims to assure an objective appraisal of physical, financial and managerial resources available in Animal Husbandry sector which would enable us in making a systematic planning for enhancing livestock production (*i.e.* Production of Milk, Eggs, Meat, and Wool) both in quantitative and qualitative terms.

I sincerely thank the farmers of the State for their cooperation in providing necessary information to the field staff.

I congratulate the office staff and field staff of Integrated sample survey scheme for their sincere endeavor in preparing the present report under the able guidance of Deputy Director (Statistics) in commissionerate of Animal Husbandry.



**Commissioner,**  
Animal Husbandry, Maharashtra State,  
Pune.

## CONTENTS

<b>Sr. No.</b>	<b>Description</b>	<b>Page No.</b>
1.	Maharashtra at a Glance	1
2.	Results at a Glance	3
3.	Introduction	7
4.	Object and Coverage	13
5.	Characteristics of Sample Villages	16
6.	Milk Production and Bovine Keeping Practices	19
7.	Milk Production	24
8.	Feeding Practices in Bovine	32
9.	Production and Utilization of Dung	33
10.	Egg Production and Poultry Rearing Practices	34
11.	Estimated No. of Layers Laying Percentage and Egg Production	34
12.	Wool Production	38
13.	Meat Production	40
14.	Annexure	43
15.	Graphs	57