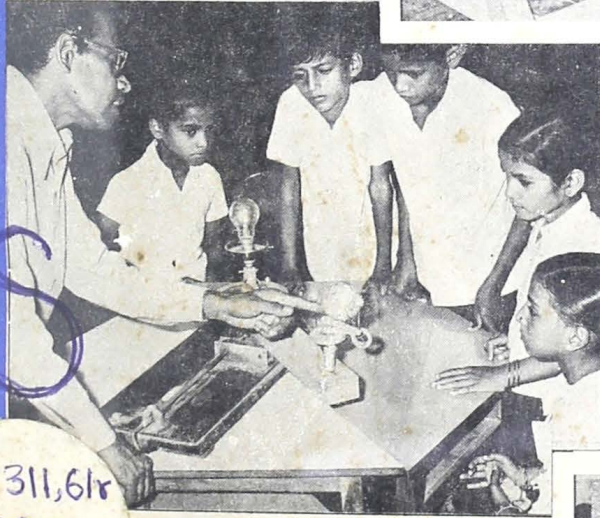




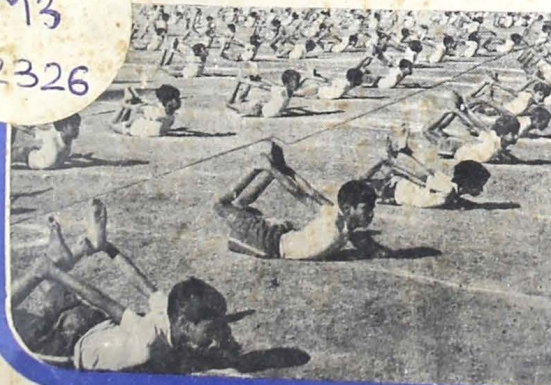
242

Administration Report of the Municipal Commissioner for Greater Bombay 1982—83

City, Suburbs and Extended Suburbs



√2311,61r
M3
212326





**Administration Report of
the Municipal Commissioner
for Greater Bombay
1982-83**

City, Suburbs and Extended Suburbs

CONTENTS

	Page
COMMISSIONER'S REPORT	i
ACCOMPANIMENTS	
1 GENERAL	1-9
GENERAL ADMINISTRATION—	
2 Ward Offices	10
3 Central Control Room	10
4 O. & M. Division	11
5 Public Relations and Civic Journal	12-13
6 W. O. (B. C. Cell)	14
7 Vigilance Branch of Engg.	15-16
8 Labour Department	17-20
9 Legal Department	21-22
10 Central Stores	23
11 Enquiries	24
12 Security Force	25-26
13 Printing Press	27-28
14 Rota Printing Unit	29-30
15 Finance	31-78
16 Revenue and Elections	79-88
17 Education	89-98
18 Public Health	99-116
MEDICAL RELIEF AND EDUCATION—	
19 K. E. M. Hospital and Seth G. S. M. College	117-164
20 B. Y. L. Nair Charitable Hospital and T. N. M. College	165-220
21 L. T. M. G. Hospital and Medical College	221-244
22 Nair Hospital Dental College	245-258
23 G. T. B. Hospital and Clinics	259-264
24 Seth A. J. Bankebihari E. N. T. Hospital	265-266
25 Rajawadi Hospital, Ghatkopar	267-279
26 K. B. Bhabha Hospital, Bandra	280-286
27 R. N. Cooper Hospital, Juhu	287-302
28 H. B. M. G. Hospital, Borivali	303-308
29 Engineering	309-346
30 Estate & Land Management (W.O. (E.))	347-356
31 Fire Brigade	357-372
MARKETS & SLAUGHTER HOUSES—	
32 W. O. Markets	373-374
33 Deonar Abattoir	375-376
34 Licences Department	377-380
35 Shop & Establishment Department	381-382
RECREATIONAL ACTIVITIES —	
36 Gardens and Open Spaces	383-384
37 Libraries	385
38 Museum	386
39 Swimming Pools	387
40 Birla Krida Kendra	388