

HYDERABAD STATE

Supplement to "GREAT BRITAIN AND THE EAST"

Incorporating the "Near East and India"

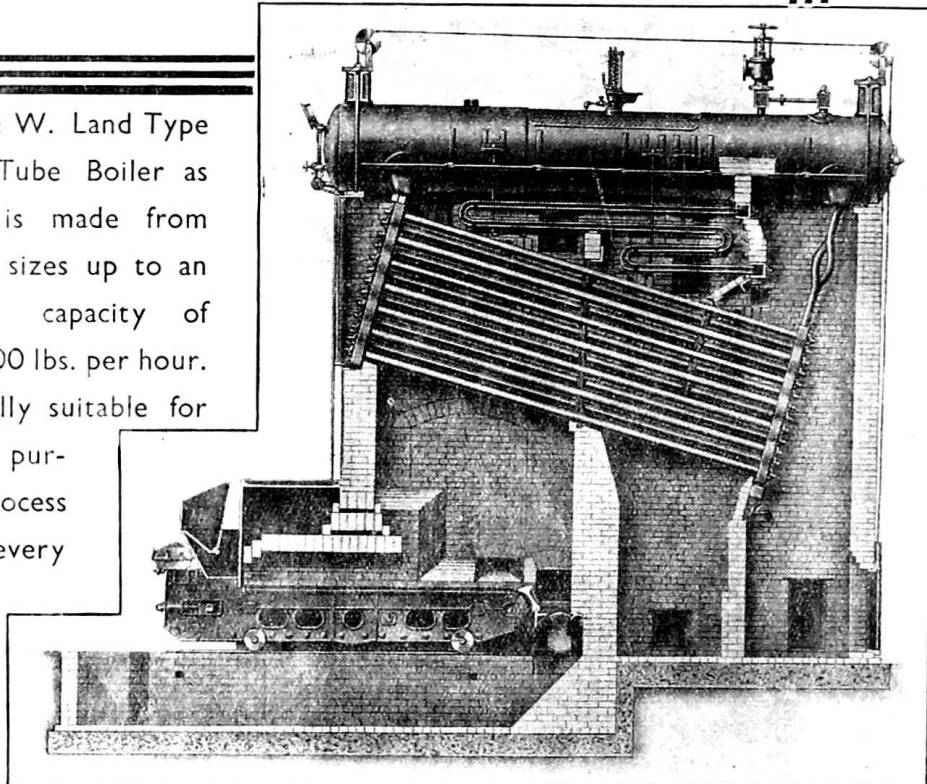
OCTOBER 28, 1937



H.E.H. THE NIZAM OF HYDERABAD AND BERAR, G.C.S.I., G.B.E.

THE BABCOCK W.I.F. TYPE BOILER

THE B. & W. Land Type Water Tube Boiler as illustrated is made from very small sizes up to an evaporation capacity of about 36,000 lbs. per hour. It is specially suitable for industrial purposes and process work of every description.



BABCOCK & WILCOX LTD.
BABCOCK HOUSE, FARRINGDON ST., LONDON, E.C.4
CALCUTTA OFFICE: WALLACE HOUSE, 4 BANKSHALL STREET

Great Britain and the East.
October 28, 1937.

P

CONTENTS

	PAGE		PAGE
PROGRESSIVE HYDERABAD	1	NIZAM SUGAR FACTORY	27
HYDERABAD AND LONDON	2	FOREST POTENTIALITIÉS	28
OSMANIA UNIVERSITY	3	INDUSTRIES: ANCIENT AND MODERN	29
THE STATE AND EDUCATION	6	RURAL RECONSTRUCTION	29
ARCHÆOLOGICAL TREASURES	10	AGRICULTURAL PROGRESS	30
THE STATE TRANSPORT SERVICES	17	HYDERABAD'S STRONG FINANCIAL POSITION	31
COAL INDUSTRY	21	THE HYDERABAD LEGISLATURE	32
"CHAR MINAR" CEMENT	24		

PROGRESSIVE HYDERABAD

The State of Hyderabad and Berar occupies a well defined and distinct position, located about the centre of the Indian Peninsula and comprising a low plateau with an average height of 1,250 feet above the sea level. This

divided into two large administrative circles, the Telingana and the Mahrathwara, corresponding to the natural divisions of the north and the west with its trappean rocks, and the granite and limestone region of



H.H. the Prince of Berar, Heir-apparent of H.E.H. the Nizam.

is the largest Indian State in area, population and revenue, and from the point of view of population is far bigger than Egypt, Iraq or Afghanistan. The area is 100,465 square miles (Berar 17,767 square miles), and the population 17,877,986 (Berar 3,441,838). It is

the south and the east. The river systems of the Godavari and the Krishna control the waters of the Dominions, while the Tungabhadra forms the southern boundary. There are flat-topped hills dispersed widely, and forest areas are confined to the districts of

Warangal, Karimnagar and Adilabad, and the Amrabad Taluqa of the Mahboobnagar district. The climate is equable practically all over the State, and the scenery varied and pleasant. By the 1936 Agreement, Berar is administered as a part of the Province of the Central Provinces and Berar, full sovereign rights of His Exalted Highness the Nizam being recognised, and Rs.25 lakhs being paid as rent to the State coffers as before. The victory in the Great War won for the faithful ally of the British Government the special title of "His Exalted Highness," and the 1936 Agreement brought the new distinction of "His Highness the Prince of Berar" to the heir-apparent of the State.

After two centuries of benevolent rule by the Asafia Dynasty, the present ruler, Nawab Sir Mir Osman Ali Khan Bahadur, G.C.S.I., G.C.B., succeeded his father, Nawab Sir Mir Mahboob Ali Khan Bahadur, in 1911, and very recently the Silver Jubilee celebrations of His Exalted Highness's reign were held all over the State by his loyal and grateful subjects. Modern Hyderabad, as at present and as planned for further progress, is entirely the product of His Exalted Highness's deep

love of his subjects and genius for administration and statesmanship. The 1919 Constitution, promulgated by His Exalted Highness after personal touch with governmental work for several years and after the victorious termination of the Great War, forms the basis of the present administrative arrangements. There is an executive council with a president, with portfolios distributed among them, and with powers distinctly defined as among individual members, the President-in-Council and His Exalted Highness the Nizam. There is a legislative council comprising 30 members, of whom eight are non-officials, dealing with Bills, governmental as well as private. There is also a judiciary, completely separated from the executive as far back as 1921, presided over by a High Court with a special charter, and a judicial committee working as the final Appellate Court. Urdu is the official language of the Court and the Government, and traditional methods of Moghul administration have been maintained intact, modified by the adaptation of modern conceptions and practices in other countries.

Hyderabad and London

BY A MEMBER OF THE TOWN PLANNING INSTITUTE.

Those who are concerned at the present development of Greater London, sprawling over the countryside, must envy the fortunate position of the City of Hyderabad. In fact, we in Great Britain have a good deal to learn, not only in town planning, but in the present campaign against slums and overcrowding from the progress reports of the Hyderabad City Improvements Board.

These show how the City of Hyderabad is being reconstructed and developed according to a carefully thought out and scientific plan. Whereas the Regional Planning Committee of Greater London was dissolved some months ago, and there are now over 100 local authorities within 25 miles of Charing Cross by no means working in harmony, the Hyderabad City Improvements Board, formed in 1914, has ensured that centralised control and wise direction which are essential if there is not to be overlapping and consequent waste of effort and money.

The Nizam's Active Interest.

After His Exalted Highness, the present Nizam, had been on the throne for three years, he showed his progressive outlook in matters of social reform by taking a personal interest in the creation of the board, which has from the beginning opened out congested areas, constructed and improved roads, provided playgrounds and gardens, and also has preserved buildings of historic importance.

The board started with certain advantages as compared with the London County Council and the surrounding authorities in Kent, Surrey, Middlesex, Buckinghamshire, Hertfordshire and Essex. For it was well laid out on its foundation in 1592 by Mohamed Quli Kutub Shah, the fifth King of Golconda. From the Char Minar, the building erected in 1591 to commemorate the end of the plague, trunk roads lead out in four directions. After the plague and the Great Fire of London Sir Christopher Wren prepared a plan which for various reasons was never

carried out, and we are suffering from that lost opportunity in the congested streets of the capital of the Empire to-day.

Comparative Densities.

Another advantage in Hyderabad is that it is by no means so overcrowded as London. One of the reports of the Improvement Board laments that there are in Hyderabad areas with as many as 60 houses to the acre, but at the present time in Great Britain local authorities are endeavouring to clear areas with as many as 80 dwellings to the acre! The density of the capital of Hyderabad State, the fourth largest city in the Indian Empire, is on the average 8,761 persons to the square mile. In the Borough of Shoreditch, within easy walking distance of the Bank of England, over 97,000 people live within one square mile. In short, Shoreditch residents are to-day twelve times as overcrowded as the citizens of Hyderabad.

Another reason why the City of Hyderabad is in a more fortunate position than Greater London is that there is plenty of land there available for growth, and money is granted so that the Improvement Board is able to carry out comprehensive schemes. How different from London! During the last few years, according to the words of an official report, some 400,000 immigrants into Greater London have been "scattered at random." In Hyderabad there is plenty of evidence of a wise and far-seeing brain.

A good example is the method in cleaning up an area of 47 acres, a slum. The average cost of the land was about one rupee per square yard. When bought, one area was reserved for the construction of model dwellings; on another dwellings were erected for employees at the Mint, and were sold to these officials at cost price; while the remainder was reserved for bungalows that were sold at public auction. The cost of some housing schemes in London is at the present time about 16s. per flat per week. The authorities in Hyderabad have skilfully balanced the cost to public

Great Britain and the East.
October 28, 1937.

3

funds involved in cleaning up a slum area by profits from the sale of part of the land to private enterprise.

A further aspect of Hyderabad's plans which has made an impression upon students of city development in Great Britain has been the wise attempt to mix the various classes. For example, in the development of the Philkhana scheme, an area of 60 acres, first a proper plan was prepared. Main roads were planned, 40 ft. wide, and 60 per cent. of the area has been left unbuilt upon, used either for roads or playgrounds. An attempt has been made to attract to this area, which is close to the busy grain markets, the middle and upper classes, and provision of only 25 per cent. is being made for "menials." At Becontree, the enormous housing estate of the London County Council in Essex, thousands of families are practically all of the same class, and this has created many difficulties.

Low Cost of Land.

It is of course only fair to point out that the cost of land is much lower in Hyderabad and that the model houses constructed by the board are probably not of a standard which would please housing reformers in Great Britain. The A type of model dwelling, for example, erected in Hyderabad consists of a drawing room measuring 10 ft. by 12 ft., a dining 8 ft. by 12 ft., one bedroom 8 ft. by 12 ft., a kitchenette 5 ft. by 7 ft., a bathroom 5 ft. by 7 ft., and a veranda 7 ft. long. The cost of such a dwelling was about £157, about a third of what a house of similar size would cost in London. The valuable aspect of the methods adopted in Hyderabad is that the inevitable high expenditure on slum clearance has been set off by money obtained by the sale of materials, where possible, and also of building plots.

Improved Communications.

Communications are of course essential in any

modern city. There are several new roads, including the circular road running around the city by the river. In this case, as in London in connexion with the new Waterloo Bridge, the improvements have involved heavy expense and the payment of compensation. The Hyderabad Board has avoided the mistakes which have been made in the planning of some of the British arterial roads, which have been sadly spoiled by uncontrolled ribbon development on each side. The board seized the opportunity of improving the land adjoining to the river circular road and of setting aside open spaces to be used for playgrounds, including a children's park.

From the point of view of public health there would be little point in making such new roads unless there were proper sewers to carry off rain water, or building new houses, unless there were drains to improve sanitary conditions. Extensive drainage schemes have been carried out by the Public Works Department.

Those who value architectural treasures and have seen with sorrow historic buildings being pulled down in London must congratulate the board in Hyderabad on their prudence. Certain buildings have been reconditioned. One, for example, supposed to be haunted, has been converted into a guest house, used by the Education Authority, at a cost of only £1,125. The historic gateway, the Delhi Darwaza, has been maintained as an ancient monument, and parts of the ancient city wall, commenced about 1587, are being repaired.

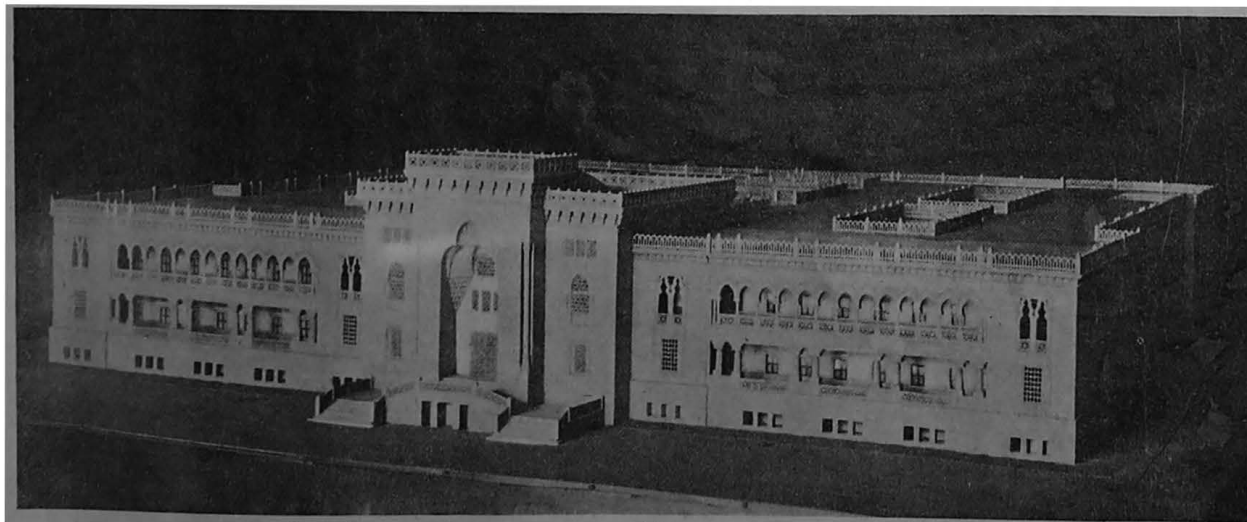
Above all, care is being given to future generations. The improvement schemes include the provision of infant welfare centres and other measures to protect the health of the children.

Although too close an analogy must not be drawn between improvements in London and Hyderabad, for conditions are so different, without doubt His Exalted Highness and his advisers have good reason to be proud of their development work up to the present.

Osmania University

From Rs.9.69 lakhs in 1909-10, the State expenditure on education has gone up to Rs.107 lakhs in 1934-35, and there are all the usual features of progress like the construction of huge buildings of high architectural excellence, steep increase in the number of school-going

children, etc., but the two remarkable developments of an original type are the Osmania University and the latest reorganisation scheme giving a vocational bias to courses of studies. The idea of the Osmania University was placed before His Exalted Highness by the Govern-



A Model of the Arts College, Osmania University.

ment on the basis of a memorandum prepared by Mr. (now the Right Honourable Sir) Akbar Hydari, the then Educational Secretary. By *Firman* of His Exalted Highness, Urdu was to be the medium of instruction in all grades of university education, and in order to keep the students up-to-date and conversant with current ideas and movements, English was to be the compulsory second language for all students of the university.

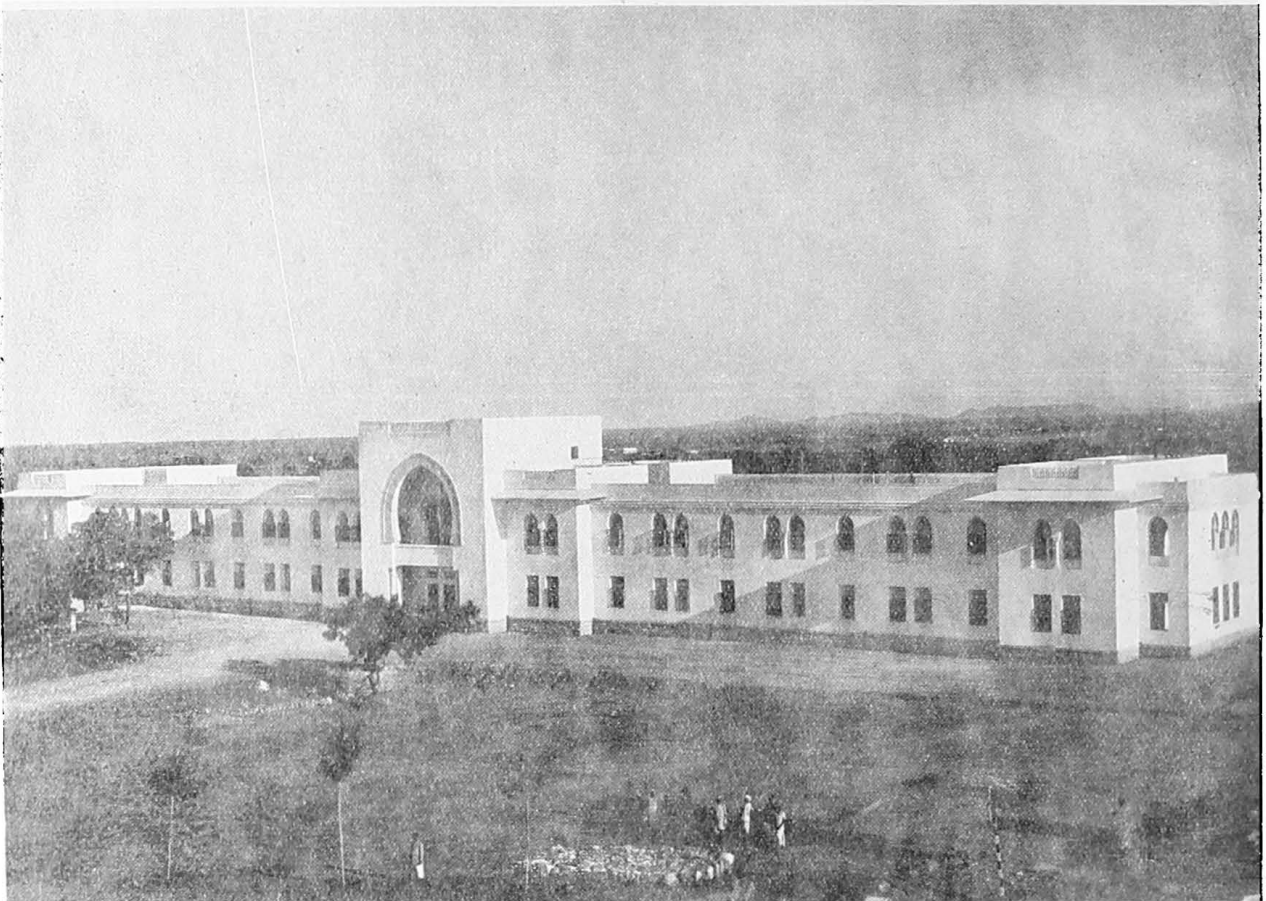
Phenomenal Progress.

It is now twenty years since the university began its career, and a review of the achievements of the students of the university shows that they have earned honours in most of the older universities, and the degrees conferred by it are securing general recognition. Perhaps the best proof of its success is that attempts are being made to follow the example of this university in the

the anxiety of the Government to accommodate every section of the community.

Attractive Buildings and Environment.

The three special features of the Osmania University are (i) the *Dairatul Maarif*, a special organisation doing excellent work in editing old and rare Arabic manuscripts, (ii) the *Nastalique* type improvised for the printing of the university publications and so well received and spoken of in Egypt and Iran, and (iii) the university buildings. The services of the late Professor Patrick Geddes were requisitioned to help in selecting a site and to prepare a site plan. The beautiful suburban locality of Adigmet was chosen. Two experienced engineers were sent on an inspection tour to the universities of Europe and America. The general plan and layout of the various buildings were prepared in



Osmania University. Hostel A.

neighbouring territories. The university buildings are fast nearing completion, and the buildings already completed harmoniously blend the ease of modernity with the art of the past. The university library contains 39,528 volumes. The translation bureau has coined 40,723 technical words and has completed the translation of 276 volumes from other languages. In spite of the phenomenal progress of the Osmania University, the Government has not yet abolished the Nizam College which is affiliated to the Madras University and in which the medium of instruction is English—the reason being that there is still some demand for this medium in a section of the community. Although the educational reorganisation committee recommended that the connection with the Madras University should be ended, the Government decided to continue the old system for some time more, a fact which clearly shows

consultation with Monsieur Jasper, a recognised authority on Oriental architecture.

The plan is to construct the various buildings on different hillocks. Thus the senate house, the library, the museum, the students' union hall, the law and the training colleges, the arts college, the colleges of agriculture and forestry, the science, mathematics and engineering colleges have all been laid out at suitable spots. Besides, there is to be a botanical garden and a forest for demonstration, a large reservoir to serve for aquatic sports and as an open swimming bath with a stadium and gymnasium. The layout of roads with granite kerbings, side walks and avenues, most of which have already been constructed, will form a special feature of the site, adding to its grandeur and beauty. The whole scheme will cost nearly a crore and a half of rupees. Two of the hostels and the arts college have

Great Britain and the East.
October 28, 1937.

5

been completed, and the other buildings are fast nearing completion. Temporary buildings were put up in the record time of seven months at a cost of Rs.10 lakhs. The opening ceremony of the new buildings was performed by His Exalted Highness some time ago.

Assisting the Educated Unemployed.

The problem of the educated unemployed has just appeared on the horizon in Hyderabad, and Government have appointed an educational reorganisation committee with a view to determine the educational policy and programme for the future. This committee recommended that

"1. Education in the State up to the bachelor's degree should be organised in four stages, each with a definite objective.

2. At the high school stage (classes X, XI and XII) there should be courses in industry, commerce and agri-

university education can be provided without the lowering of standards and who are fit to benefit by it.

7. There should be differentiation between the curricula of urban and rural secondary and high schools.

8. There should be no departure from the existing policy of the State regarding the medium of instruction.

9. Statutory provision should be made to give women a voice in the control of girls' education, as provided in the draft charter for the establishment of the board of education.

10. Effect should be given to the above recommendations in the manner defined in paragraph 8 of this report."

His Exalted Highness the Nizam sanctioned these recommendations with the following reservations made by the executive council:

"1. That the affiliation of the Nizam College with



Osmania University. Hostel B.

culture, in addition to courses in arts and science.

3. A board of education should be established by Royal Charter for the control and supervision of secondary and high school education in the State.

4. The Nizam College should be an associated college of the Osmania University, working for the degrees granted by the Osmania University, but with English as the medium of instruction and examination, and administered by a separate board of governors of which the Pro-Vice Chancellor should be an *ex officio* member.

5. The board of education should conduct two examinations, one at the end of Class IX and the other at the end of Class XII.

6. Enrolment at the university and at the Nizam College should be strictly confined to those for whom

the Madras University be continued for the time being.

2. That a representative of the public works department be added to the board of education. This representative will be nominated by the Minister of the P.W.D. in consultation with the chief engineer.

3. That members of the public be also included amongst those members who are to be nominated to the board of education under sub-section (g) of Appendix D of the report.

4. That the board of education should try to ascertain public opinion before submitting any proposal.

5. After the completion of every five years, a critical review of the same be submitted to Government."

A special officer with an adequate staff has just been appointed to work the scheme sanctioned.

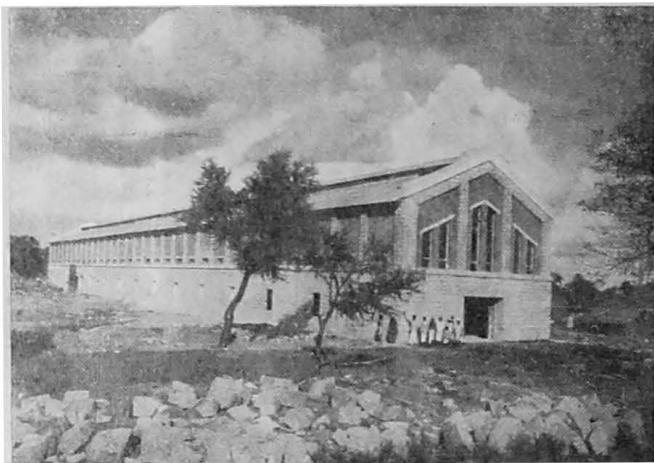
The State and Education

REMARKABLE PROGRESS.

Shortly after being invested with full administrative powers in 1884, His Highness the late Nawab Sir Mir Mahboob Ali Khan Bahadur had said in a Proclamation:—

"Nothing will afford me greater pleasure than to see my people living in peace and prosperity, engaged in the development of sources of wealth, in the acquisition of knowledge and cultivation of the arts and sciences, so that by their efforts the country may rise to a high state of enlightenment and the State derive benefit from their knowledge and intelligence."

This public acknowledgment of the importance of education by the Ruler was a great help to Nawab Imadul Mulk Bahadur, then Director of Public Instruction and Education Secretary, in formulating his schemes for the advancement and improvement of education. The Education Department was re-



The Engineering College Workshop, Osmania University.

organised and the policy of Government with regard to education was finally shaped. It was decided that every town with a population of 10,000 and over should be provided with an Anglo-Vernacular school, that a high school should be established at the headquarters of each division, and that vernacular education was to be fostered by opening a primary school in every well-populated village. And such steps as were immediately practicable were taken to bring this scheme into operation. In 1907-8, endorsing a recommendation of his predecessor as Home Secretary, Mr. A. Hydari (now the Rt. Hon. Sir Akbar Hydari) urged upon Government "the need for taking stock of the existing state of affairs as regards a matter of such paramount importance as the educational system of these Dominions." Mr. A. T. Mayhew, M.A. (Oxon), I.E.S., was appointed educational adviser for two years and assumed charge of his office in January, 1910.

A New Impetus.

With the accession of His Exalted Highness Nawab Sir Mir Osman Ali Khan, Bahadur, Asaf Jah VII, we come to a period of intense activity in matters of education. He made up his mind at the very outset of his career that he would build up a modern State and bring it to the level of the most advanced countries of the

world. On coming to the *musnad* on 25th Meher, 1320 F. (1st September, 1911), he declared:—

"In every way I will do my best to do good to my people and my country."

Underneath this simple statement lay a current of strong convictions and unbounded sympathies which were revealed to the public as soon as he began his rule. While rapid strides have been made in all spheres of public activity, in none has the progress been so remarkable as in education. Recognising that the prosperity of his State and the well-being of his subjects depends mainly on education, he has always given it his Royal patronage, and the result is a phenomenal development of all branches of education—university, secondary, primary, vocational and industrial education, women's education, education of the depressed classes, training of teachers, and physical education.

Three months after the accession of His Exalted Highness Mr. Mayhew relinquished his appointment as educational adviser after submitting his report wherein he made an exhaustive survey of the state of education in all its aspects and suggested numerous reforms. It is interesting to observe that Mr. Mayhew indicated the possibility of the establishment of a separate university for Hyderabad.

The various suggestions made by Mr. Mayhew for the expansion of primary education and improvement of secondary education received the most careful consideration at the hands of Government. Though they did not concur with his views on the comparative merits of English and Urdu as the medium of instruction in the higher stages of learning, they accepted his recommendations for extending the facilities for education and improving the administrative machinery of the department. Many of the reforms subsequently introduced, moreover, proceeded very much on the lines suggested by him.

No immediate action was taken on Mr. Mayhew's report, as it was felt that much preliminary spade-work in the way of internal organisation was necessary. The new Director of Public Instruction, Dr. Alma Latifi, M.A., LL.D., I.C.S., whose services were borrowed from British India and who assumed charge of his office on the 27th Shehrewar, 1322 (2nd August, 1913), applied himself to this work with commendable zeal.

A General Advance.

In 1326 F. (1916-17) His Exalted Highness issued the epoch-making *Firman* in which he announced his decision to start a separate university for Hyderabad with Urdu as the medium of instruction. This message was also a pronouncement of general education policy, as it clearly defined the ideal to be aimed at and the methods to be adopted in matters of education. Its beneficent influence spread over almost the entire field of education, and far-reaching changes were introduced by way of expansion and reorganisation of educational institutions of every grade. New colleges were established in the city and the districts; the number of primary and secondary schools was considerably increased; special impetus was given to women's education; primary education was made free; the facilities

for the training of teachers were extended by the establishment of a teachers' college for teachers of secondary schools and five training schools for teachers of primary schools; the inspecting agency was strengthened by the appointment of divisional inspectors; and lastly, teachers' salaries were improved and made more attractive. The separate article in this Supplement entitled "Osmania University" indicates the progress made towards the materialisation of that great project.

Extension of Primary Education.

The scheme for the expansion of primary education sanctioned at the end of 1324 F. (1914-15) was partially put into force while Dr. Alma Latifi was still in office. Recognising the vital need for a rapid extension of primary education, the new director set before himself at the very outset the aim of providing, within as short a time as possible, each village with a population of more than 1,000 inhabitants with a school. So greatly was the rate of progress accelerated that within a year of Sir Ross Masood's appointment the number of schools and scholars was doubled. After this the depressing effects of the War, the outbreak of influenza, plague and cholera, and the prevalence of famine hampered work; nevertheless progress was maintained although at a less rapid rate until 1331 F. (1921-22), by which date the number of schools had increased to 4,203 and of scholars to 208,332. The latter year was made memorable by a *Firman* making primary education entirely free.

Secondary Education.

The expansion of primary education, coupled with the establishment of the Osmania University, naturally gave rise to the need for a rapid development of secondary education, the director's aim being gradually to provide the headquarters of each district with a high school and as many Taluk headquarters as possible with middle schools. In pursuance of this policy no less than 49 secondary schools were added between 1324 F. (1914-15) and 1336 F. (1926-27), while the number of pupils rose in the same period from 19,480 to 32,906. Concurrently efforts were made to place the secondary schools on a more efficient basis.

Owing to the special responsibility and position of Jagirdars in the State, a Jagirdars' college was established for the sons of the landed gentry and aristocracy in 1333 F. (1923-24), and Mr. Shawcross was appointed principal.

Conspicuous advance was made in the education of girls. Apart from the increase in the number of girls' primary schools the outstanding features of the progress of women's education in the period ending 1926-27 were the opening of the intermediate classes in the Zenana High School, Nampalli, the establishment of four training schools for women, and the increase in the number of middle schools from five to 14. In the Zenana High School B.A., B.Sc. and M.A. classes have now been added and it has become a first grade college.

Education of Depressed Classes.

Until 1326 F. (1916-17) there were no special public schools for the depressed classes, but wherever circumstances permitted pupils belonging to these classes took advantage of the ordinary primary schools. From 1326 F. (1916-17) onwards Government made it a definite policy to open special primary schools for them with a view to spreading literacy among them. These schools were at first chiefly of the aided type and their

numbers and strength gradually increased from 21 and 975 in 1326 F. to 96 and 2,339 respectively in 1331 (1921-22), after which there was a decline until 1334 F. (1924-25), when the number of schools decreased to 52 and the enrolment to 1,395.

Physical Education.

An important step towards the development of physical education was taken in 1329 F. (1919-20), when the Hyderabad Athletic Association was founded with the object of encouraging sportsmanship through outdoor games amongst the school boys at headquarters. The membership was limited to 30. Mr. Beall, chief inspector of physical education, was appointed secretary. The association organised inter-school football and hockey tournaments for the first time in 1330 F. (1920-21).

The Boy Scout movement was formally inaugurated with the appointment of Mr. Mirza Yusuf Khan as director of Boy Scouts in 1333 F. (1923-24).

Training of Teachers, etc.

The imperative need for more adequate facilities for the training of teachers led to the appointment on special duty for three months in 1330 F. (1920-21) of Mr. I. Thickett, principal of the training college at Patra, whose principal recommendations were:—



Translation Bureau (Temporary Building), Osmania University.

- (a) A thorough reorganisation of the existing normal schools.
- (b) The creation of the faculty of education in the Osmania University and the establishment of a teachers' college for the training of graduates.
- (c) Translation of English textbooks on pedagogy into Urdu.

In the sphere of industrial and technical education the Osmania central technical institute was attached to the Mint workshop at Hyderabad and placed under the direct supervision of the Mint Master. In this institution, besides instruction in purely technical subjects, provision was made for imparting literary education up to the primary stages. On the practical side the teaching staff consisted of five Europeans.

The adult education movement was started in 1335 F. (1925-26) with the object of bringing literacy within the reach of those who had not received the benefit of education in their younger days. The total strength of these schools in 1336 F. was 71.

Recent Developments.—(Fasli 1337 to 1344, A.D. 1927-28 to 1934-35.)

The rapid growth in the volume of education described above was followed, under the directorship of Mr. Fazl Muhammad Khan, M.A., at the outset of his period of office, by measures for strengthening the department and making the existing schools more efficient. By 1341 F. (1931-32) the department was prepared for another stage of expansion. The follow-

ing are the leading features of progress achieved during the period noted:—

(1) 389 primary schools, 22 middle schools and 11 high schools were added.

(2) The Warangal High School was made permanent as a second grade college and a new intermediate college opened at Gulburga.

(3) Secondary education for girls was developed by the addition of four middle schools and three high schools.

(4) The Zenana Intermediate College was recognized as a first grade college and given the name of "Osmania University College for Women."

(5) A faculty of education was created and a class for the training of graduates opened in the Osmania Training College.

(6) Classes for the training of matriculates were opened in the district training schools for men.

(7) A faculty of engineering was started in the Osmania University.

(8) Schools were provided with adequate and more efficient teaching staffs.

(9) Buildings, playgrounds and equipment were supplied to schools as far as the funds permitted.

(10) The middle school examination, which had outlived its usefulness, was abolished.

(11) The school curriculum was completely recast and widened so as to adapt it to the present-day requirements and bring it more into conformity with modern tendencies in education.

(12) In a large number of schools a practical bias was given to school work by the introduction of vocational instruction.

(13) A college of physical education was opened and physical education was made compulsory in all schools.

(14) Medical inspection was introduced in colleges and a scheme for medical inspection of secondary schools was also sanctioned.

(15) Special attention was paid to the education of the depressed classes and a comprehensive scheme for providing increased educational facilities for them was prepared and submitted to Government.

(16) The Education Code, which had been under preparation for many years, was completed and published.

(17) Arrangements were made for carrying out departmentally the work of preparing, compiling, selecting and publishing suitable text-books for schools. Steps were also taken for translating into Urdu books on education and pedagogy.

(18) The Boy Scout movement was further developed and the Girl Guide movement was inaugurated.

(19) Adult education was encouraged and developed; a curriculum was drawn up and rules and regulations for systematising adult schools were enforced.

(20) A model primary school was started with up-to-date arrangements for the instruction of children according to the most modern methods.

Education of Depressed Classes.

In principle all the public schools have always been open to depressed class pupils, but owing to their social disabilities such pupils are very often unable to take full advantage of the opportunities offered to them. The need for special treatment had been felt for a long time. Some special schools had been started in 1326 F. (1916-17). Feeling that a further development was necessary, in 1340 F. (1930-31) the Director of Public

Instruction submitted to Government a comprehensive scheme proposing increased facilities for the education of depressed class children. In 1343 F. (1933-34), with the permission of Government, 18 aided schools for the depressed classes in Balda were converted into Shahi schools and taken under the control of the department. In 1344 F. (1934-35) Government were pleased to sanction the director's scheme, but it could not be put into force owing to lack of funds.

The following table gives the number of depressed class schools and scholars in 1336 F. (1926-27) and 1344 F. (1934-35):—

Year.	Schools.	Scholars.
1336 F.	52	1,395
1344 F.	101 (+49)	3,514 (+2,119)

The total expenditure on depressed class schools in 1344 F. amounted to Rs.28,797.

Vocational Instruction in Primary and Secondary Schools.

The question of introducing vocational instruction in ordinary schools was seriously taken up in 1338 F. (1928-29), and from that year onwards there was a steady increase in the number of schools providing vocational training along with instruction in general subjects according to the departmental curriculum. In 1344 F. (1934-35) there were special arrangements for vocational instruction in 21 high schools, 35 middle schools and a few primary schools. The total expenditure incurred on vocational instruction in these schools in 1344 F. amounted to Rs.60,577. The vocations taught in the various schools according to the local conditions were as follows:—

Carpentry, Book-binding, Tailoring, Carpet Weaving, Shatranji Weaving, Tape Weaving, Cloth Weaving, Card Board Work, Cane Work, Metal Work, Polishing, Shoe-making, Gardening, Button Work, Bidri Work and Wood Work in Boys' Schools; and Nursing, Sewing, Knitting and Karga in Girls' Schools.

Adult Education.

The following table gives the number of adult schools and their strength in 1336 F. (1926-27) and 1344 F. (1934-35):—

Year.	Schools.	Scholars.
1336 F.	3	71
1344 F.	45 (+42)	1,531 (+1,460)

The adult education movement which had been started at headquarters in 1336 F. (1926-27) spread to the districts in 1340 F. (1930-31). There were in 1344 F. 19 adult schools (seven aided and 12 unaided) with 889 scholars in Balda and 30 schools (18 aided and 12 unaided) in the districts with 614 scholars.

A Marvellous Change.

The above narrative shows clearly how backward education was in these Dominions at the time when His Exalted Highness Nawab Sir Mir Osman Ali Khan Bahadur, Sultan-ul-Uloom, came to the throne and what a marvellous change has been effected since then as a result of his enlightened policy. At the time of His Exalted Highness' accession in 1320 F. (1911) the expenditure on education was only Rs.14 lakhs; now it is over a crore. That his munificence has borne fruit is evident from the following figures:—

Types of Institutions	1320 F. (1910-11)		1344 F. (1934-35)	
	No. of Institutions.	No. of Pupils.	No. of Institutions.	No. of Pupils.
Colleges	2	126	10	1,680
Secondary Schools ..	88	16,326	184	69,843
Primary Schools ..	921	48,113	4,368	2,73,097
Special Schools ..	25	1,919	184	8,962
Total	1,036	66,484	4,746	3,53,582

It will be seen from the above table that the number of institutions and scholars has increased five times during the last 25 years. The proportion of pupils under instruction to the total population of school-going age was less than 5 per cent. in 1320 F.; now it is nearly 18 per cent. The proportion of boys to the male population of school-going age is now nearly 30 per cent. as against 5.9 per cent. in 1320 F., while that of girls to the female population of school-going age is now nearly 5 per cent., as against 0.7 per cent. in 1320 F. Thus the enrolment of boys has increased five times and that of girls seven times. Under His Exalted Highness' gracious patronage every department of education has been extended and made more efficient, and new activities such as the Boy Scout, Girl Guide and adult education movements and a college of physical education have been started. A network of schools has been spread over the entire Dominions, from which go forth loyal subjects whose one aim in life is to serve their Ruler and the State as best they can.

The creation of a university employing an Indian language as the medium of instruction was an event memorable in the educational annals of not only the Dominions but of the whole of India. The establishment of this university was the direct outcome of His Exalted Highness' desire for bringing about as quickly as possible a wider diffusion of knowledge and a higher level of intellectual life among his subjects. This bold experiment of using the vernacular as the vehicle of instruction in the university stage has been completely successful, and signs are not wanting to show that the future development of higher education in India will be on similar lines.

Before His Exalted Highness the Nizam's accession, owing to the backward condition of education, the State had to import men from outside to carry on the work of different departments; but now fortunately the State has a sufficient supply of qualified men to meet all the demands of the public services. The rapid advance of secondary and university education has also brought about a decided improvement in the efficiency of every branch of administration.

His Exalted Highness has been equally keen on the spread of education among the masses. The opening of nearly 3,500 new primary schools and the gracious *Firman* making primary education free throughout the State bear eloquent testimony to his solicitude.

Mr. Fazl Muhammad Khan, M.A. (Wrangler), the present director; has proved a worthy successor to Sir Ross Masood, Nawab Masood Jung Bahadur. He has not only succeeded in consolidating the progress already achieved, but has improved educational efficiency all round. He has given a strong impetus to secondary education and, as far as funds have permitted, he has taken steps to extend primary education. Moreover, he has devoted much attention to the development of physical education and has also striven to give a practical bias to education by introducing vocational instruction in many of the schools.

Vocational Education.

In connexion with vocational education it may be pointed out that the idea of reconstructing the system of education with a view to the introduction of vocational training, which is now engaging the serious attention of educationists in British India, has been under the consideration of His Exalted Highness for many years past. Even as early as in 1335 F. (1925-26) he issued a *Firman* appointing a committee to go into

the question. This committee considered the problem and submitted a valuable report to Government. Subsequently another committee, including the late Dr. Mackenzie, was appointed to reconsider the same question in the light of more recent developments in other parts of the world. Two members of this committee, viz., Dr. Mackenzie and Mr. Fazl Muhammad Khan, were constituted into a sub-committee to collect evidence and submit specific proposals for educational reorganization. They did accordingly, and their recommendations have recently been accepted by Government with certain modifications. The following is a summary of the scheme of reorganization as finally sanctioned by His Exalted Highness the Nizam:—

<i>Reorganisation of Courses.</i>	
<i>Existing courses and their length—</i>	
Primary Classes	I to IV—4 years.
Middle Classes	V to VII—3 years.
High Classes	VIII to X—3 years.
University Classes	XI to XIV—4 years.
<i>Proposed courses and their length—</i>	
Primary Classes	I to V—5 years.
Secondary Classes	VI to IX—4 years.
Higher Classes	X to XII—3 years.
University Classes	XIII to XV—3 years.

Each stage is to have a definite objective. The primary stage is to aim at giving the pupils that minimum amount of knowledge which every child should possess. The secondary course is to have a bias towards manual training in urban schools and towards agriculture in rural schools, while in the high school stage diversified courses are to be introduced in arts, science, agriculture and commerce for pupils of varying aptitudes. There are to be two school examinations, one at the end of the secondary stage and the other at the end of the high school stage. A board of education consisting of representatives of not only the university and the education department but also representatives of agriculture, commerce and industry, co-operative and public works departments and of the public, including representatives of girls' education, is to be set up for the control and supervision of secondary and high school education.

The committee has also emphasised the need for a greater expansion of primary education and recommended the planning of the economic development of the State so as to ensure the success of the scheme.

When this scheme is put into force the State will have the proud satisfaction of having given the lead to the rest of India in reorganizing education to meet the present-day needs, just as it has already given the lead in the matter of imparting higher education through the medium of the vernacular.

The promptness with which His Exalted Highness the Nizam accepted the above-mentioned scheme of reforms, involving as it does a large increase in expenditure, is itself a proof of his deep and abiding interest in education. That there have been noteworthy developments in other branches of administration is a matter of common knowledge. The rapid improvements in the means of communication, especially the extension of the railways and the ever-increasing use of motor vehicles, the expansion of internal and external trade, the greater attention paid to industries and agriculture, the inauguration of irrigation schemes on a gigantic scale, the successful organization of rural credit, the elaborate measures taken for famine relief, the extension of sanitation and medical aid even to the remotest parts of the State, the introduction of broadcasting and such other measures—have also indirectly contributed to the spread of education.

Archæological Treasures

ELLORA FRESCOES.

Archæologically speaking, Hyderabad is probably the richest tract in the whole of India. The world-renowned caves of Ajanta and Ellora, the fortresses of Warangal and Daulatabad, the temples of Ramappa and Itgi, the tombs at Bidar and Aurangabad, each of these series deserves a set of volumes by itself, but it is proposed to indicate here the admirable research done

Taluqa, and at Anegondi (Raichur District), the earlier seat of the Rajas of Vijayanagar. . . . Of the Ellora frescoes, the Buddhist group date back from the first to the sixth century A.D. The Brahmanical group cover the seventh to eleventh century A.D. The frescoes occur in the *Kailasa*, which was hewn out of the live rock in the eighth century A.D. during the reign of



Kutub Shahi Mosque, Golkonda.

by the Archaeological Department in interpreting some of the famous frescoes dealing with Hindu mythology. The accompanying extracts from a paper by the Director of Archaeology and the pictures speak for themselves.

“ Besides the frescoes at Ellora and Ajanta, there are fresco paintings at two other places in the Nizam’s Dominions—Pillalmari, a village in the Suryapet

Hrishnarya. The Jaina group styled the *Indrasabha* range in date from the eighth to the tenth century A.D. The best specimens, however, are to be found in the *Kailasa* where they are executed in the western and southern porches of the main hall, as also in some panels of the ceiling of the latter. But without powerful electric light it is difficult to make out the frescoes of the ceiling of the main hall. . . . Although

Great Britain and the East.
October 28, 1937.

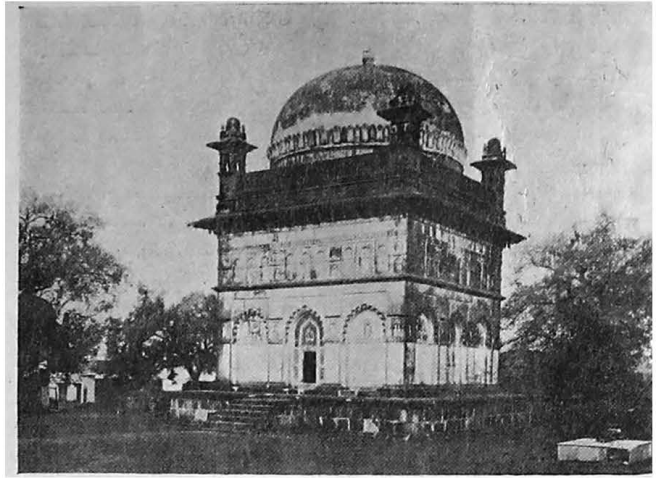
the cave *Kailasa* was hewn out in the eighth century, the paintings there belong to different periods, as may be judged from the several layers of them which have been revealed where the old plaster has peeled off through climatic causes. The innermost layer seems to be contemporaneous with the excavation of the shrine (eighth century), and in style it has a close relation to the later paintings of Ajanta. We notice a group of gods flying in the air with their consorts, and making adoration (by joining their hands) to Shiva, the presiding deity of the temple. The most prominent of these adoring gods is riding on a *yali* (a fabulous monster with the beak of an eagle or a parrot, the horns of a ram, and the body of a lion). The figure of the god does not show good modelling, but the treatment of the toes and the eyes is exactly in the Ajanta style, while in the delineation of the feet of his consort the resemblance is so marked that it will be difficult to differentiate them from the feet of many a squatting figure in Ajanta. In front of



The Dancing Siva, Cave XXI, Ellora.

this pair is another pair in which the male figure, in the act of turning round for adoration, has assumed a ludicrous posture. His legs are also bent in an inartistic manner—perhaps the painter has delineated them conventionally to indicate the effort of flying in the air. The outstretched legs of the flying figure of Ajanta afford a much greater sense of lightness and swiftness of motion, and one may wonder why that attitude has been discarded at Ellora, and that of bent legs adopted.

To the right of the last pair there is another, the male figure of which is holding a purse, perhaps giving an offering of cash to Shiva (giving a good excuse to the keepers of the shrine to fleece the credulous votaries as much as possible). The circular black and red lines indicate conventional clouds, in which fat cherubs

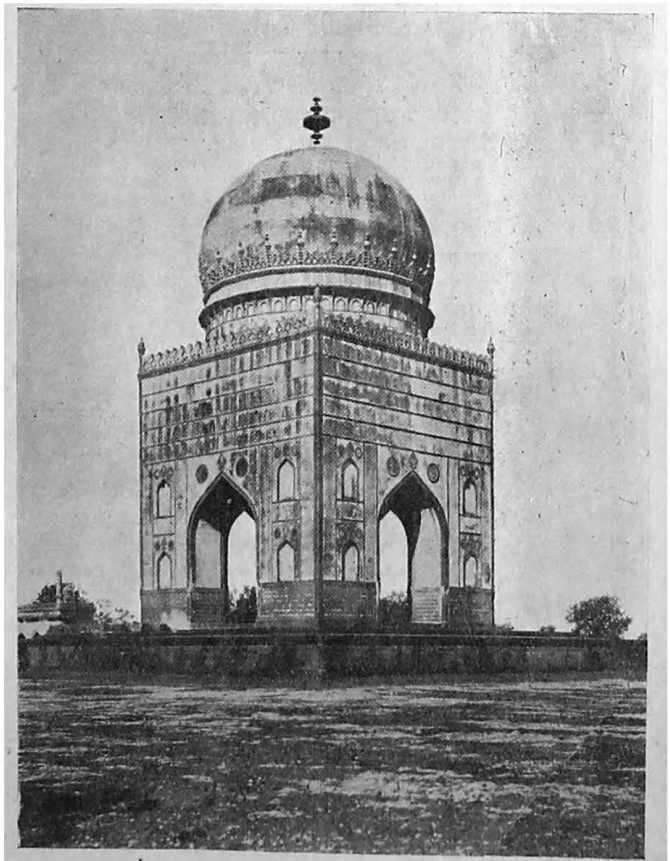


Malik Ambar's Tomb at Khuldabad.

(*ganas*) are floating about in frolicksome attitudes while the movements of some of the female *chauri* bearers betray dalliance.

Above the last divine pair there is another of dwarfs who are holding each other in close embrace and, instead of their lips, have their noses pressed together. The drawing of the noses is very peculiar, the addition of a line near the cheeks showing them to be artificial rather than natural ones. This treatment was apparently adopted to infuse a comic effect into the picture.

At the back of this pair is another god with two *chauri* bearers and two female attendants of pale complexion, one of which (the figure is mutilated in the drawing) may be his consort. The other female attendant has again an artificial nose. In this subject the palms and soles have been painted of a lighter colour than the

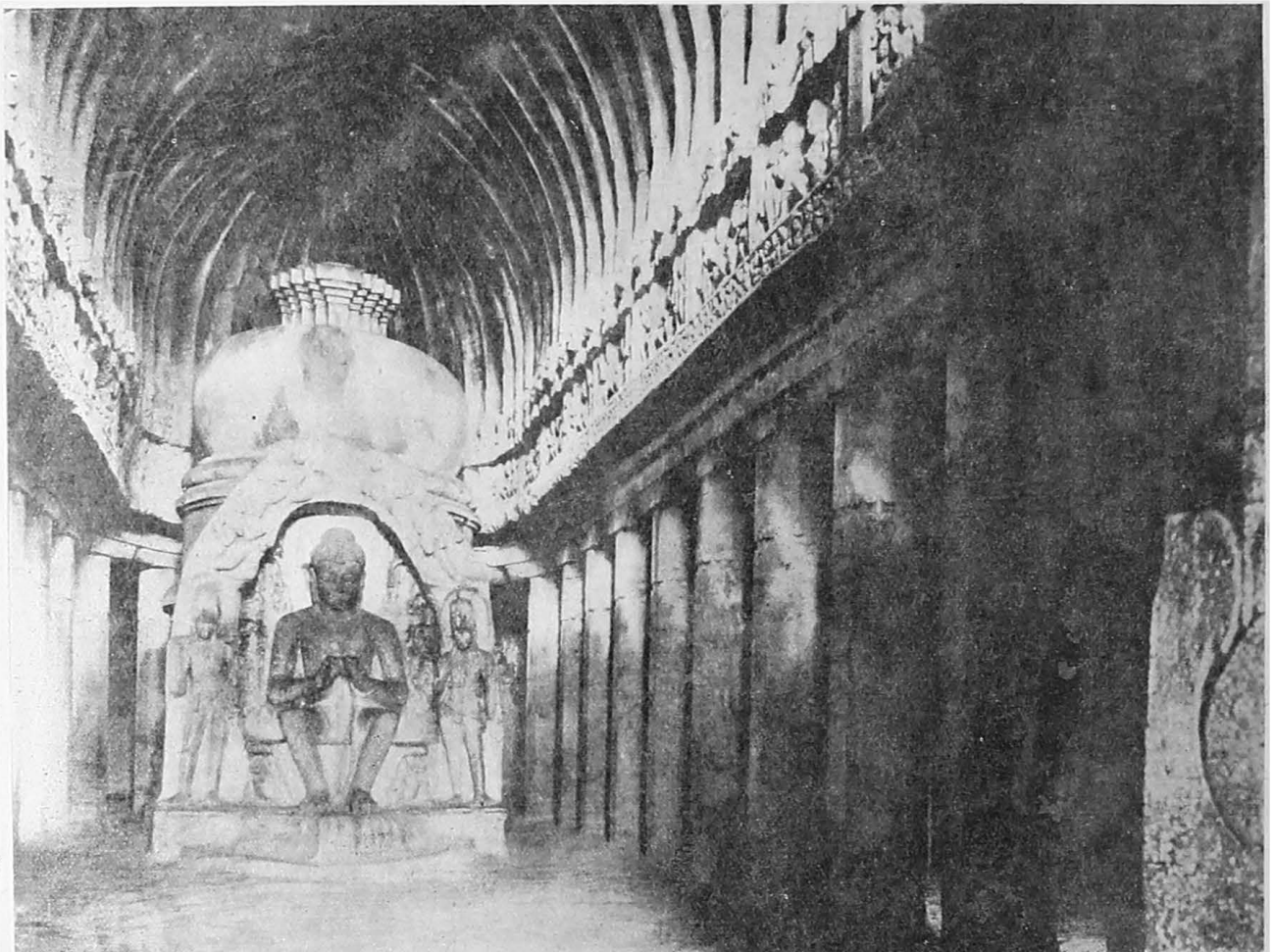


Ali Barid's Tomb at Bidar.

body, a rule which has always been strictly observed at Ajanta. The general artistic effect of the painting, particularly as regards modelling and sense of proportion, is extremely poor and shows that with the waning of the Buddhist religion the art of painting also rapidly deteriorated.

The most beautiful part of the painting, however, is the panel in which two dwarf elephants are shown playing in a lotus pond. One of them has caught a fish in his trunk: the trunks of both have been drawn with great realistic effect. There are also two human dwarfs in the pond, the fingers of the hand of one of them resembling the petals of a full blossomed lotus. The second or middle layer represents a four-armed god (*Vishnu*) flying in the air, riding on the shoulders of a

The uppermost layer represents the elephant-headed god *Ganesha* riding on a rat which, instead of getting crushed under its heavy load, is shown galloping. Above this figure is that of *Shiva* riding on a bull with his consort *Parvathi*. The head of *Shiva* is well drawn, and the high light on the nose, chin and throat is interesting. To the left of *Shiva* there is another god, the outline of whose face has been rubbed away. He is riding on a goose, and his consort, a dark-skinned lady, is perched on the tail of the bird behind him. The figures of the right hand of this god have been delineated in the teaching attitude of the Buddhist faith. To the left of this figure is *Kartikeya*, an offspring of *Shiva*, riding on a peacock (the neck of which has been very badly drawn). In front of the deity, riding on a goose, there are two



Interior of Cave X, Ellora.

winged ogre (*Garuda*) with an extraordinary long nose. He is wearing a crown and may be presumed to be the king of his class. The fingers of the god, particularly those of the two left hands, have been delineated in the Buddhist fashion, although the figure here represents a Hindu god. On either side of the god there is a female figure *Lakshmi* and *Bhumidevi* riding on an agram, whose legs are like those of a goat. The riding figures are making adoration to the god. The hair of the lady on the left of the god has been dressed in the Ajanta style but the faces of all these figures are devoid of expression, and the art seems to have become schematic and altogether lacking in soul. There are some other figures in this fresco, but they have been damaged. The colours are identical with those used at Ajanta.

male figures, one of them holding a round thing in his right hand, the other posing his body in a dancing attitude. The drawing of these two figures is rather crude, but indicates considerable movement. The fresco is damaged in several places, and where the upper layer has peeled off the figures of the fresco beneath are visible.

The general condition, as regards freshness of colour and firmness of the plaster, of all three layers is almost uniform, and the only explanation possible to account for executing a new fresco on the previous one is that the keeper of the shrine or the ruler of the country was not satisfied with the work of his predecessors, and to show his devotion and zeal arranged for fresh paintings to be made.

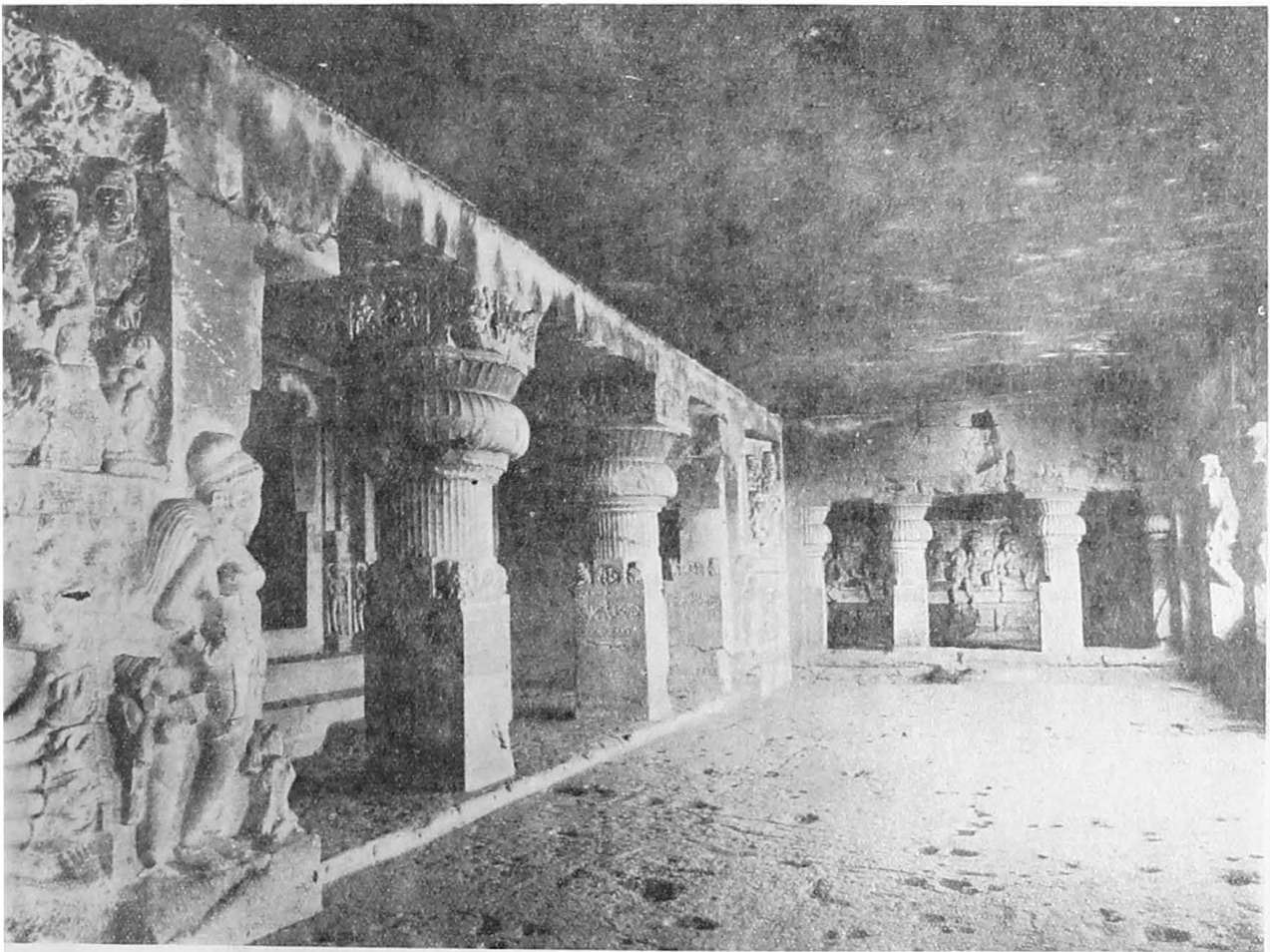
Great Britain and the East.
October 28, 1937.

13

The most interesting pictures in the (western) porch are some battlefields depicted on the inner sides of the architraves. The drawings of the horses are most spirited, showing a great improvement upon the drawing of this animal at Ajanta, where it has invariably been delineated in rather crude fashion. The figures of the riders are also remote from the Ajanta school, and more akin to the Rajput style both in spirit and artistic detail. Fortunately there are some inscriptions mentioned in certain names—*swasti sri pramariraja*, *swasthi sri kamnara seva samgha*, etc. . . . The Paramaras or Malwa wielded great authority in the twelfth century, and as their name occurs in the inscription here it is not unlikely that the battlefield refers to one of the fights between them and the rulers of the Deccan. The chief point, however, is that the close relationship to the Ajanta school, which is noticeable in the innermost

be the cause of the putting up of different layers in the ceiling of the western porch, the frescoes of which have been discussed above.

The painting illustrating this group given here depicts the bringing back of Seetha to Rama. The drawing is highly conventional—the monkey-god has been shown here taking giant strides and carrying Seetha on his head, who is somewhat alarmed, and has both her hands raised in the air. The detail of this painting has been much obliterated, but even originally there does not seem to have been any fine brush work. Seetha is guarded on either side by a nymph floating in the air. In the treatment of the bust of the nymph to the right of Seetha one may notice a close resemblance to the Brahmanical sculptures of Ellora. The painting may belong to the ninth or tenth century A.D., and it indicates rather the tense feelings of the Brahmanical



Interior of Cave XXI, Ellora.

fresco, is gradually lost in the upper layers until it becomes finally extinct in the paintings of the architraves which, apparently owing to the influence of the north, are more akin to the Rajput school.

Passing on to the paintings in the southern porch, we notice several scenes from the *Ramayana*, to wit, the abduction of Seetha by Ravana, the fight of Rama with Ravana, the opportune help of the monkey-god Hanuman, and the final release of Seetha through the enterprise of the latter. These frescoes seem to have been executed at a later period, perhaps at a time when the temple was in charge of votaries who were more imbued with the doctrines of the Vishnuite cult than with those of the Shiva. It is not unlikely that a change in belief from the Shiva doctrine to that of its rival may

faith (particularly of the time of its revival in the eighth and ninth centuries) and the calm and repose of the Buddhist creed.

. . . The figure of Shiva in a dancing attitude on the ceiling of the main hall, painted near the door leading to the southern porch, is fairly representative of the style of the other paintings in the main hall. The painting shows much conventionality, but it is of great value as marking a period in the history of Indian art when the canons governing painting were not different from those governing sculpture or bronzes. The painting is perhaps too feminine to be a true representation of the god of destruction, but it shows much artistic feeling, and has a close relationship to many a figure of this god executed in the south of India about that time



Apsarases (Divine Musicians), Cave XVII, Ajanta.

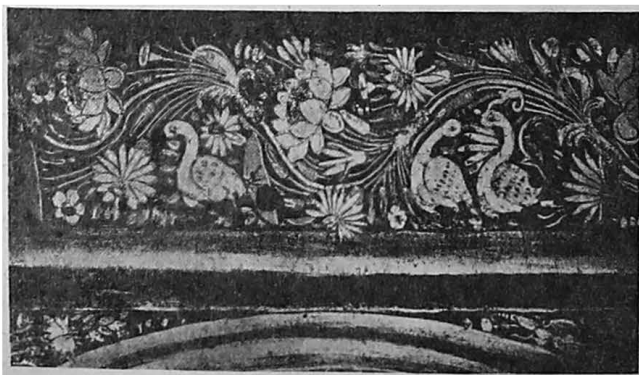
(tenth century). It may also be observed that the picture perhaps records the high watermark reached by the art of painting under the Brahmanical influence in the mediaeval period of Indian history.

. . . In summing up the remarks made above regarding the fresco paintings of Ellora, it may be observed that, however crude and decadent in type they may be, they fill an important lacuna in the history of Indian painting, and without their help it is impossible to follow the connection between the early school of Ajanta and the later Rajput style, which absorbed many characteristics of the Persian school under the Moghuls."

AJANTA FRESCOES.

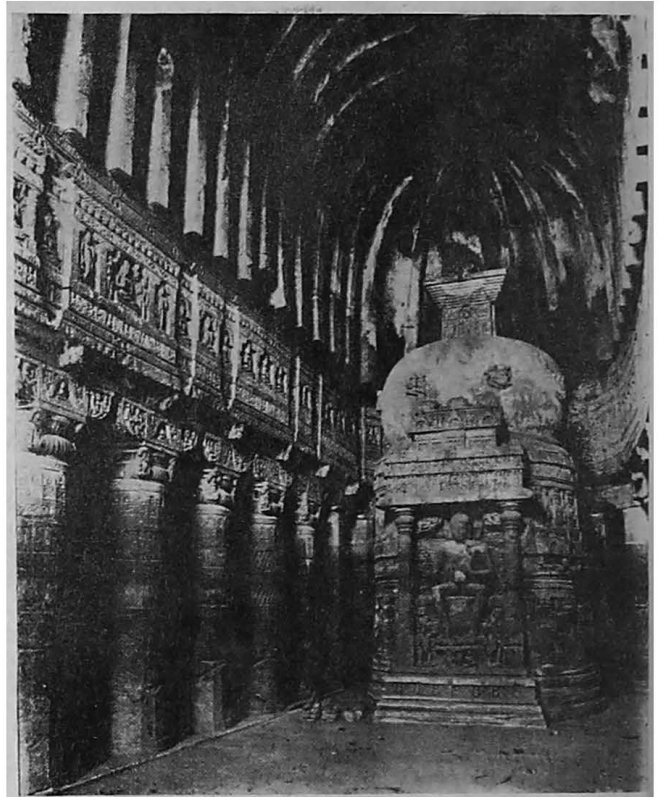
The great cost and devotion to art with which the Nizam's Government took up the task of conserving and editing the world-famous Ajanta frescoes is common knowledge, and there have been numerous appreciations from far and near, but a comparative appreciation of the type given below should interest the lover of art and the world tourist. Professor Lorenzo Ceconi wrote thus :

"In the presence of any great manifestation of art, it is impossible at first sight to grasp its import and so it is difficult to form an idea of its entity; this has happened to me with regard to the paintings of the Ajanta caves. At the very onset my first impression was one of felicitous amazement, and now that I have spent some time at the caves and have been able to



A Panel of the Ceiling of Cave I, Ajanta.

observe attentively their details, I am in a position to pass an opinion. My first impression has been that the art of Ajanta had its influence from Greek sources; and this might even be the case here, as many are the parallel qualities that one encounters in the paintings. My views are that as the ancient Greeks and Romans studied from actual reality, so even were the artists of Ajanta undoubtedly realists. This is demonstrated by the poses of the figures, by their limbs, by their ornaments around the heads and the necks, by their drapery and particularly the modality of the folds of the latter, and this even by the perfect and faithful representation of the vessels and mirrors. The group of figures in red in the small recess on the right hand side of Cave II leads one to assume that the artist first traced the design on the wall in order to have the 'ensemble' of the figures, as evidenced by the fact of a total absence of expression of sentiment in them. The contours in red of the full figures and the preparation



Interior of Cave XXVI, Ajanta.

(before being painted) show that the artist sketched his design in one colour, and subsequently, having attended to the general outlines, entered upon the task of the painting. And this he did in order to avoid being pre-occupied with the double problem of the selection of pose and colouring. Several Italian painters of the Renaissance followed this system; in fact in the Galleria Degli Uffici in Florence there is still to be seen a canvas by the great Leonardo da Vinci prepared in this way. The well-balanced and harmonious colouring of these paintings, from a pictorial point of view, elicit great interest particularly owing to the sober use of few natural colours.

In Cave I the colossal figure of Buddha, which is nearly immune from varnish, evinces a surprising portrayal of art on account of its pictorial qualities; this painting in its grandiose outlines recalls to memory the figures of Michael Angelo in the Sistine Chapel, while the clearness of the colour of the flesh, so true to nature,

Great Britain and the East.
October 28, 1937.

and the transparency of the shadows are very like those of Coreggio. The design and expression of the face are exceptionally surprising, the breadth of the technique, the interpretation of the shape of the hand made to realistic perfection, permit of a comparison with the two great artists of the Italian Renaissance; the female figure which is on the right of the figure of Buddha presents the same simplicity and skill. The hand holding the flower is also designed with exquisite skill and elegance. The same is to be said of the other figures and details; they are executed in a keenly appreciative purity of style and form, coupled with a real aesthetic selection of colours true to nature; in fact, the predominant feature are the two colours blue and red beautifully harmonising one with the other.

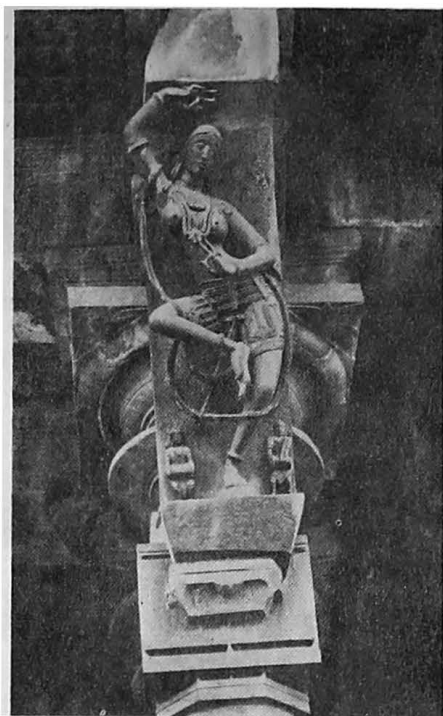
In Cave XVII the group 'Mother and Child' making an offering to Buddha is of great artistic value. In these



The Great Bodhisattva (Padmapani), Cave I, Ajanta.

two figures the design of their heads and their expression are admirably exquisite. The poses of these heads in the direction of the figure of Buddha recall to mind the purity of form which one encounters in the schools of Umbria and Tuscany of our most eminent Quattrocentists. This painting perhaps is less developed than that of Buddha, but its pictorial qualities bring it to the first rank; in fact its painter must have been an artist indeed, well versed in the principles of sound art, because of the fact of the perspective, of the mouths, of the eyes and of the other parts perfectly harmonising with the whole subject and with the heads, the hands and even the very fingers true to reality and drawn with a most precise design.

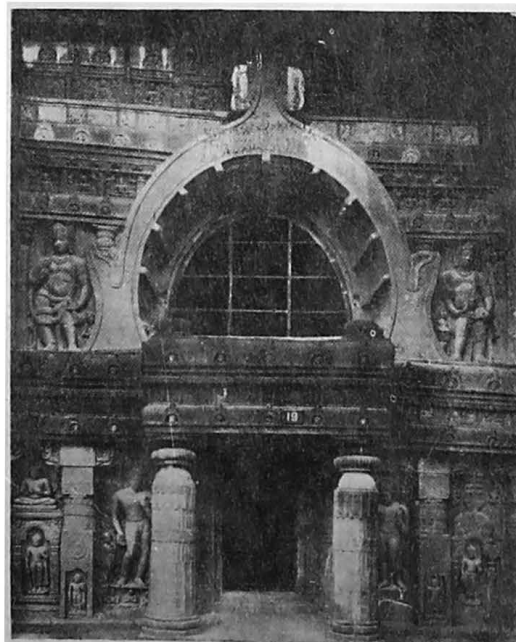
The battle of Ceylon also is a work of art of great worth for its 'ensemble' of the grandiose composition.



A Figure Bracket, Rāmappa Temple, Warangal.

It somehow bears a remarkable resemblance to the works of our great Venetian artists of the Renaissance. The group of elephants proceeding towards the centre of the scene is astonishingly realistic; more than paintings, they appear in bas-relief, so great is the chiaroscuro and so perfect their modality. In their several and various poses these animals are rendered in the most perfect form.

The worship of Buddha in its outlines can stand comparison with the Italian painters of the Quattrocento (1400). The division of the painting into two compositions, one above the other, was followed also by Ghirlandaio, by Angelico, Tiziano and Sanzio in 'the Transfiguration'; the Italian 'Seicentisti' and 'Settecentisti' (seventeenth to eighteenth centuries) frequently followed this system of composition.



The Façade of Cave XIX, Ajanta.

The group of the Persian Kings mounted on their horses, surrounded by crowds, en masse, with contour and the dark background, recalls to memory the paintings of Spinello Aretino, and at first sight, were it not for the figure of Buddha, it would be taken for 'the Adoration of the Magi.' The large elephant, which with its masterly lines of composition stands out in the middle of the scheme, leads one to assume that the artist felt the need of some imposing figure in order to maintain the harmony of the scene.

The entrance to Cave XII merits to be considered as a thing of supreme artistic value. The small embellishment which adorns the upper portion is marvellous; as marvellous are the eight panels which go to make up the decoration of the said entrance. These in simplicity of form and colour bring to mind the paintings of those eminent Umbrian artists who flourished in the fifteenth century.

The ornamentation of the ceilings and pillars is also of great importance. It has not a consecutive order of repetition of subjects, but one different from the other; they are so many and so various in themselves as to furnish innumerable themes for decorative art. The ceilings in particular are very rich in geometrical and figural 'Spartiti' (panels), such as our Italian decorators of the fourteenth and fifteenth centuries used to compose.

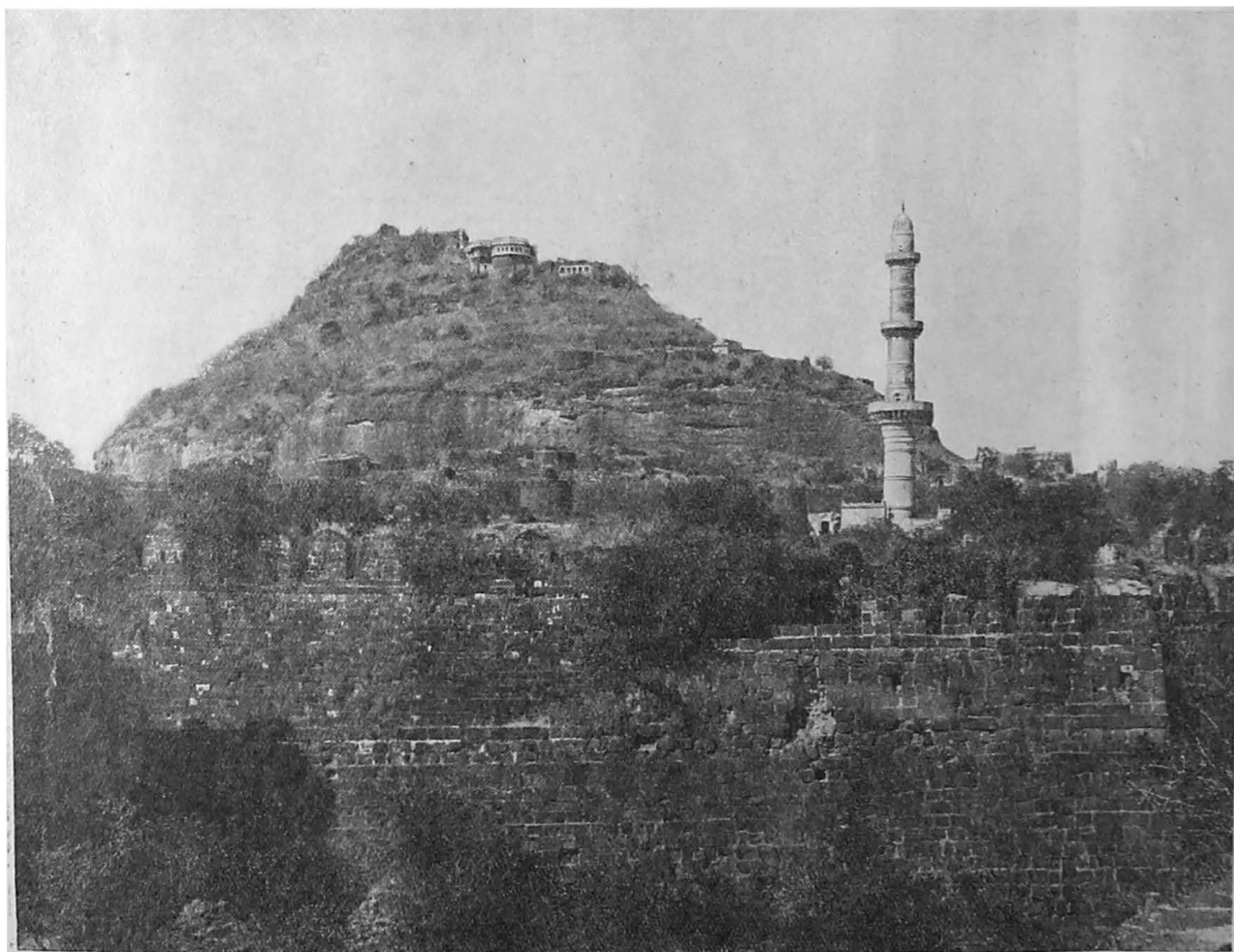
In this stupendous religious work of art there has been no stinting of artistic powers nor of other resources. everything is blended, everything is in keeping with a great and marvellous undertaking that could speak to posterity for centuries. I make bold to com-

pare the caves of Ajanta with the Sistine Chapel. Signorelli, Botticelli, Ghirlandaio, Perugino, Rosselli combined their art to render themselves worthy of one another in creating the great Roman work that Sixtus IV, Della Rovere, had been minded to begin and Michael Angelo afterwards completed with the greatest manifestation of his art. In Ajanta the ablest artists of the Indian school spared themselves no efforts to render this marvellous group of caves the First Monument of India.

This is my humble appreciation of but a small part of this work of art, namely, of that which is now in evidence and which provokes the rapturous admiration of the connoisseurs of both the fine art and history."

MOSLEM ARCHITECTURE.

In the domain of Moslem architecture some monuments of the Dominions take rank among the greatest architectural creations in the East, such as the Jami Masjid of Gulbarga, the Chand Minar of Daulatabad, the Madrasah of Mahmud Gawan at Bidar, and the Char Minar of Hyderabad. The peculiarity of the Mosque at Gulbarga is that its entire area, 36,720 sq. ft., unlike any mosque in India, is roofed over. The building is also important as being one of the earliest Moslem mosques in the Deccan, representing the principal architectural forms—the dome with a long, clerestory, the tall, slim pointed arch, and the squat arch, which we see repeated over and over again in later Moslem buildings of Bijapur, Bidar and Golconda.



Doulatabad Fort and Minaret.

Great Britain and the East.
October 28, 1937.

The Chand Minar of Daulatabad is a tall, but slender minaret, 210 feet high and 70 feet in circumference near the basement. It has a conical apex and three large galleries built on its outside at various heights. The form of the apex and the galleries suggest Persian influence because they are so unlike anything in India.

The chief artistic importance of the great college of Bidar, which was built in the middle of the fifteenth century, lies in the encaustic tiles which adorn the façade of the building and display a perfect revelry of colour. The Madrasah was in a flourishing condition in the time of Ferishta, staffed as it was by professors and divines from the most distant countries of Asia, and equipped with a library of 3,000 manuscripts.

The Char Minar or "four minarets," built in 1591, is a unique monument of its kind in India and in the

grandeur of its conception and the just balance of its structural masses, combined with picturesqueness of detail, far surpasses the Atala Masjid Gateway of Jaunpur, the Baland Darwaza of Fathpur Sikri, and the lofty but monotonous and heavy *gopurams* of the south. The plan of the building consists of a square hall, having an arch in each of its faces and a lofty decagonal minaret at each of its angles. The minarets, 180 feet high, are surmounted by small domes with gilt terminals, and each is surrounded by three galleries. The parapet of the building is adorned with panels of lattice work, in great variety of design, and below it runs a small arcade. Next comes an ornamental cornice, and below this again a larger arcade and another ornamental cornice. The Char Minar was originally designed as a gateway in front of the Char Kaman piazza on which the lofty portals of the royal palaces opened.

The State Transport Services

Of the many commercial and quasi-commercial concerns run by the Government, like electricity, irrigation works, Government Press, telephones, etc., the most important is the State railway, which is proving invaluable to the public and remunerative to the State as well as to the employees. The purchase of the railway from the N.G.S.R. Company by the Government in 1930 marked a new stage in the utility and productivity of the railway. On the 31st March, 1935, Rs.14.7 crores was the total capital at charge in the Nizam's State railway, and the net earnings in that year were Rs.91.1 lakhs, thus yielding a net revenue on capital outlay of 6.2 per cent. (after making due contributions to the depreciation fund) as compared with 5.8 in the previous year, the return on Class I Railways in British India being only 3.9 per cent. in 1934-35. The ratio of working expenses to total earnings was reduced from 57.5 to 55.6 per cent., due mainly to increased traffic in foodgrains and cotton and coal as a result of special rates having been quoted. The depreciation fund stands at Rs.36.5 lakhs for railways (apart from Rs.2.7 lakhs for road transport).

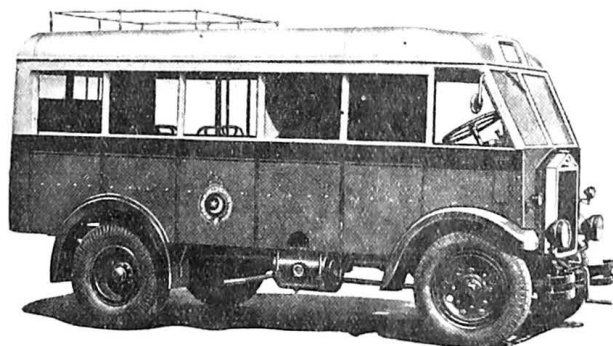
Co-ordination of Transport Facilities.

The Hyderabad Government have launched a comprehensive scheme for the co-ordination of road, rail and air transport. The State railway comprises at present 1,360 route miles of which 700 miles are broad gauge and the rest metre gauge. Various projects of railway construction are under consideration to increase the route mileage, and efforts are being made in the meanwhile to ensure an adequate provision of road transport facilities in places where the country has not been opened up by railways. Prior to 1932 the bus services in the Dominions were worked by private owners, which arrangement left much to be desired from several points of view as the service was irregular, overcrowded, subject to sporadic changes in fares, and caused heavy inroads into railway earnings while contributing nothing to the upkeep of State roads. These considerations led to the inauguration in 1932 of up-to-date bus services by the railway with a monopoly over certain selected routes. The number of such buses rose from 27 in 1932 to 271 in 1937, and the route mileage from 283 to over 4,000, while the capital outlay will amount to Rs.50 lakhs in the near future as against

4.19 lakhs. Several private monopolies are expiring and the railway is buying up the fleets of the displaced companies. Eventually it is proposed to replace all private services by the State railway motor transport service.

Development of Road Services.

The State-owned rail and road services are being co-ordinated so as to ensure properly scheduled timings at uniform rates. This co-ordination has been developed along several lines. Where the roads run parallel to the railway, the bus services work as auxiliaries to the latter, which have in consequence been considerably



This special Albion bus is one of a number constituting the 11th repeat order which Albion Motors Ltd. have been privileged to supply to the Government of H.E.H. the Nizam of Hyderabad.



BY APPOINTMENT

ALBION MOTORS LTD.,
GLASGOW, SCOTLAND.

and Grosvenor House, Old Court House Street, CALCUTTA

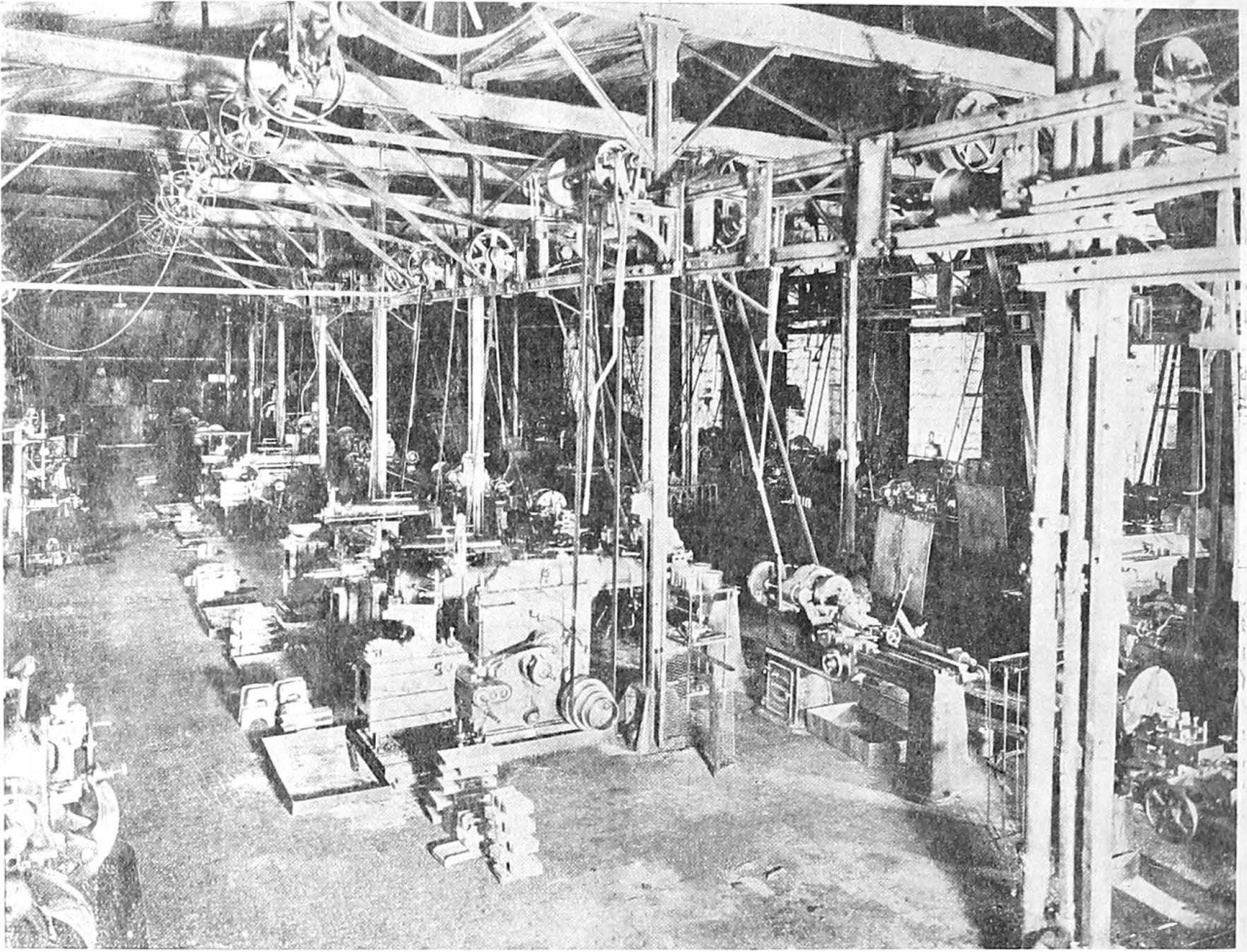
ALBION—THE CHOICE OF THE DISCERNING USER

speeded up. One hundred and ninety-five connections are made daily between passenger trains on the railway and buses on the roads. The popularity of the railway motor transport service is evident from the fact that in 1935-36 the number of passengers carried by these buses was seven million while during the year 1936-37 this number rose to 11 million. Combined rail and road excursions have been introduced and parties have been taken to Ajanta and Ellora, Nizamsagar, Ramappa and Bidar. Over 2,000 excursionists availed themselves of this arrangement. The elasticity of the bus system was put to the test with very satisfactory results when it was found possible to put 35 buses on the road in Secunderabad and Hyderabad to counter the public inconvenience which resulted from a sudden

operation ensures a planned scheme of transport and development of roads as feeders to the railway. The new rates of taxation on motor vehicles which came into force from 6th October, 1936, have provided an increasing revenue which the Government have decided should be credited in full to a special road fund to be managed by the road board. It will be a substantial addition to the ordinary road grants of the public works department, and will be earmarked for this purpose.

A State Air Service.

A further development in the co-ordination of all forms of transport in the Dominions under a single administration will be accomplished when the State:



A Section of the Brass Finishing Shop, Lallaguda Workshops.

strike of bus and taxi owners who chose this method of objecting to the new rules for taxation of motor vehicles during the recent Silver Jubilee celebrations. As a result of this scheme of co-ordinated transport administration private profits are being diverted to the State for the benefit of the people as a whole. Standardisation, more regular services and lower rates have replaced the diversity and irregularity which characterised the private services. The charge by State railway buses is six pies in Osmania currency equal to five pies of the British Indian currency.

Road Construction Programme.

An interesting feature in the scheme of co-ordination is the close co-operation established between the railway, the public works and the revenue departments in regard to all schemes of road construction. This co-

operation begins to operate its own air service in conjunction with its road and rail services. The first step has been taken in the establishment of an aerodrome at Hyderabad and the appointment of instructional and ground staff. The Hyderabad Aero Club, situated at Begumpet, provides a course of flying instruction and training of an internationally recognised standard. It is expected that within a few weeks the State will be operating its own air service to Aurangabad, Warangal, Gulbarga and other important places, for the benefit of visitors to world famous temples like those of Ellora and Ajanta, as well as the local public for purposes of business and pleasure.

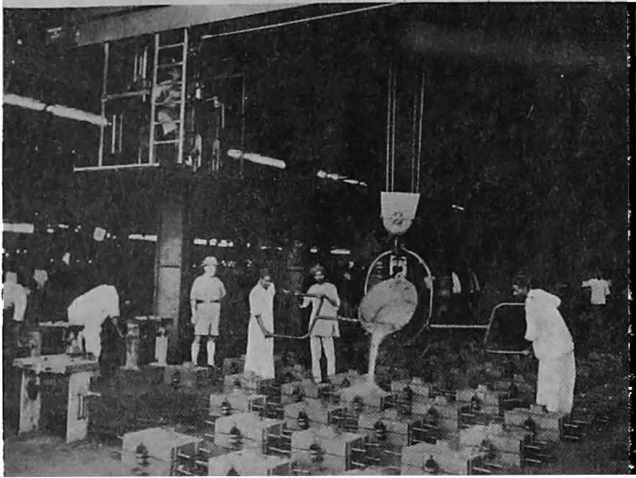
The co-ordination thus effected between the three principal means of communication is expected to eliminate wasteful competition, provide cheaper and better means of transport and open up hitherto

Great Britain and the East.
October 28, 1937.

inaccessible regions to trade and traffic. It is the object of the Government to see that each area and each industry is served by the means of transport best suited to its needs.

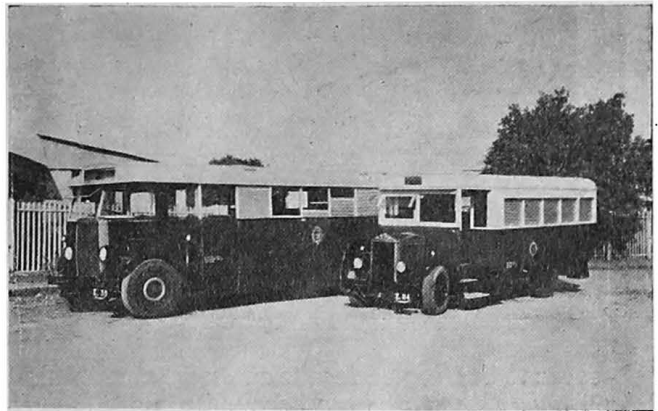
Welfare Activities for Employees.

Considerable extensions have been made from time



Casting in the Iron Foundry, Lallaguda Workshops.

already occupied and at Lallaguda and Secunderabad they have been provided with water, electricity and sewage connections. The educational needs of the children of railway employees have been catered for by the provision of schools, which have been extended from time to time according to the demand for accommodation. The general hospital at Lallaguda has been considerably improved and extended, and additional hospitals and dispensaries have been opened on the line at important places. Various measures calculated to



Modern Buses of the Rail Motor Transport Service.

to time in housing employees both at headquarters and on the line, while in recent years provision has been made also for building quarters for the workshop staff and for a percentage of non-emergent staff, such as office clerks and peons. Some of these quarters are

improve the service conditions of the staff have been introduced, such as revised leave rules, new educational grants, progress in the adoption of rules issued by the Government of India regulating the hours of employment and periods of rest, etc. New medical attendance

BURN

& CO., LTD.

HOWRAH IRONWORKS

HOWRAH
(BENGAL)

Established 1781



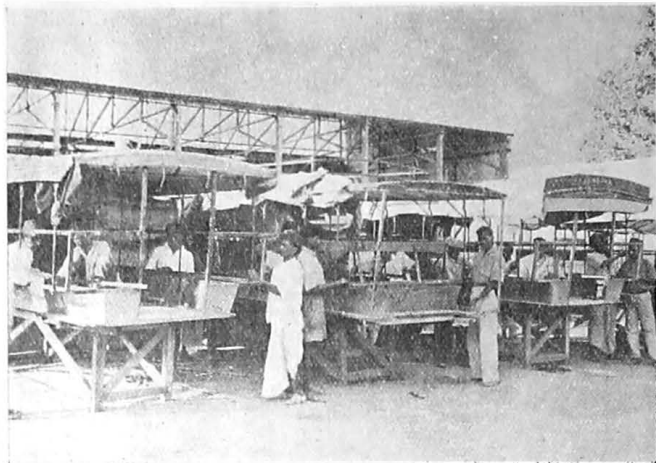
Suppliers to
H.E.H. THE NIZAM'S
STATE RAILWAY



Telegrams: BURN-HOWRAH

ENGINEERING STORES, HARDWARE & STEEL,
RAILWAY ROLLING STOCK,
WAGON COMPONENTS,
SPRINGS, FORGINGS, PRESSINGS,
IRON & STEEL CASTINGS,
RAILWAY POINTS & CROSSINGS.
FABRICATED STEELWORK
FOR
BUILDINGS & BRIDGES,
PRESSED STEEL TANKS & STAGINGS,
TRACK SPECIALITIES,
DIVING & INDUSTRIAL SAFETY BREATHING
AND PROTECTIVE APPLIANCES & EQUIPMENT.

rules have been introduced. These provide benefits in respect of such matters as attention and free dieting on a more liberal scale than before. To ensure security of office tenure, a comprehensive set of rules regulating the

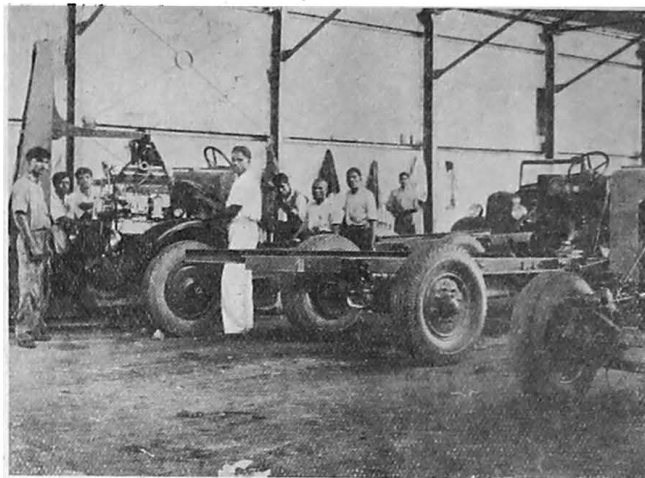


Rebuilding Bodies of Buses.

procedure to be adopted for the discharge and dismissal of railway servants has been issued. In short, the goal as set forth by the then Finance and Railway Member at the time of the purchase of the railway has been studiously kept in view and striven for:—

“The prospects of being in a position to ensure effectively the wellbeing and contentment of all the workers on the railway with due regard to the claims of the general taxpayer and of the travelling and trading

public has been the governing consideration of the Nizam's Government in purchasing from the private company the ownership of the railways passing through the State, as much as any calculation of direct financial gain by the transaction.”



The Chassis Repair Shop, Rail Motor Transport Service.

Proofs of Progress.

The railway management is vested in a railway board which is presided over by His Excellency the President of the Executive Council, and this board has succeeded in securing the maximum economies and at the same time introducing the best machinery in the workshops and the latest equipment for the comfort of the travellers. The following figures should be interesting:—

	1910.	1934-35.
Open mileage (miles)	742.73	1,347.87
Number of stations	101	211
Gross earning (Rs. in thousands)	93.14	2,13.99
Working expenses (Rs. in thousands)	54.03	1,19.47
Net earning (Rs. in thousands)	48.11	94.52
Operating ratio	48.35	55.83
Percentage of net earnings on capital outlay	not available	6.39

Rolling Stock.

Locomotives (number)	117	173
Locomotives, total tractive effort, lb.	1,571,868	3,443,019
Coaching vehicles (number) ..	282	406
Accommodation (number of seats)	9,790	17,201
Goods wagons (number)	2,480	3,846
Good wagons, total carrying capacity (tons)	34,998	66,918
Number of staff	not available	16,327

ROWLAND'S MACASSAR OIL



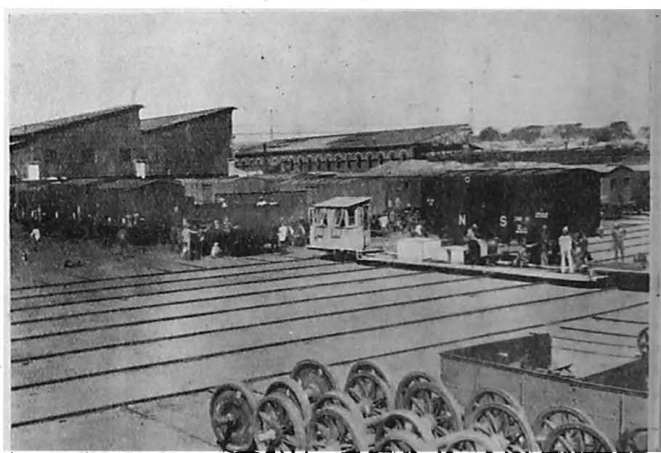
FOR ALL SHADES
OF HAIR
IT PROMOTES THE
GROWTH, GIVES
LIFE AND LUSTRE
AND LONG DELAYS
BALDNESS

From Chemists, Stores and Hairdressers

SEND FOR FREE BOOKLET ON THE HAIR

A. ROWLAND & SONS, LTD.

22, LAYSTALL STREET, ROSEBERY AVENUE,
LONDON, E.C.1, ENGLAND



General View of Traverser and B.G. Waggon Yard, Lallaguda Workshops.

Coal Industry

The State abounds in agricultural produce like cotton, ground nuts, pulses, oil seeds, rice and sugar cane, and the possibilities of to-morrow are much richer than the out-turn of to-day. Several of these agricultural products will develop industries small and large in the near future. But by far the most important large-scale localised industry at present is the coal-mining industry. The coal mines at Singareni and Tandur occupy an area of 124 square miles, the capital outlay amounts to Rs.90 lakhs, and the coal output promises to foster many another large-scale industry in these Dominions on account of the high quality of the coal and the low costs of production and transportation.

The Singareni collieries were established many years ago, mining operations having commenced in 1886. Situated in the Yellandu Taluqa in the south-east of the State, these mines are connected by a branch railway 17 miles long with Dornakal Junction on the State railway. The distance is 162 miles from Hyderabad City and 93 miles from Bezwada, the terminus of the State railway on the south-east. The Tandur collieries were started in 1927. These are situated in the Asfabad Taluqa in the north of the Dominions and connected by a branch railway line with Belampalli railway station on the Kazipet-Bellarshah section of the State railway. The distance is 166 miles from Hyderabad City and 79 miles

from Kazipet. Three seams are worked known as the "King" seam at Singareni and the "Ross" and "Salar Jung" seams at Tandur collieries. At Singareni two mines are being worked, (1) Strutt Pit (750 feet deep and equipped for an output of 1,500 tons per day) and (2) No. 22 Pit (450 feet deep and equipped for an output of 1,000 tons per day). At Tandur two mines are being worked, (1) Morgan's Pit (150 feet deep and equipped for an output of 1,200 tons per day) and (2) Crosleigh Incline, equipped for an output of 800 tons per day.

Large Production and Modern Equipment.

During the 25 years of the present Nizam's rule, the total coal raised from the Singareni and Tandur mines was 15,941,606 tons, of which 15,295,901 tons were raised from Singareni mines and 645,705 tons from Tandur mines, working at an average of 637,664 tons per year. Of the total quantity raised, 15,144,526 tons have been despatched outside the State.

The annual output has increased steadily from 506,173 tons in 1910 to 727,756 tons in 1934, showing an increase of 221,583 tons in the annual output during the period. In 1929 over three-quarters of a million tons were raised. The quality is excellent and this coal is extensively used as steam coal by railways, mills and other industrial concerns. To ensure that only cleaned



Coal Screening Plant, Singareni.

coal is despatched and standard quality maintained, special coal-cleaning and screening plants have been installed. It can be said that the coal handling plants installed at these two collieries are the most efficient and up-to-date of their kind in India; in fact they compare well with similar plants in Great Britain. The Singareni Coal Mining Company is the only one of its kind in India which has plant suitable for the mechanical cleaning of small size coal (coal of size 1 to 2 inches).

Underground Working Conditions.

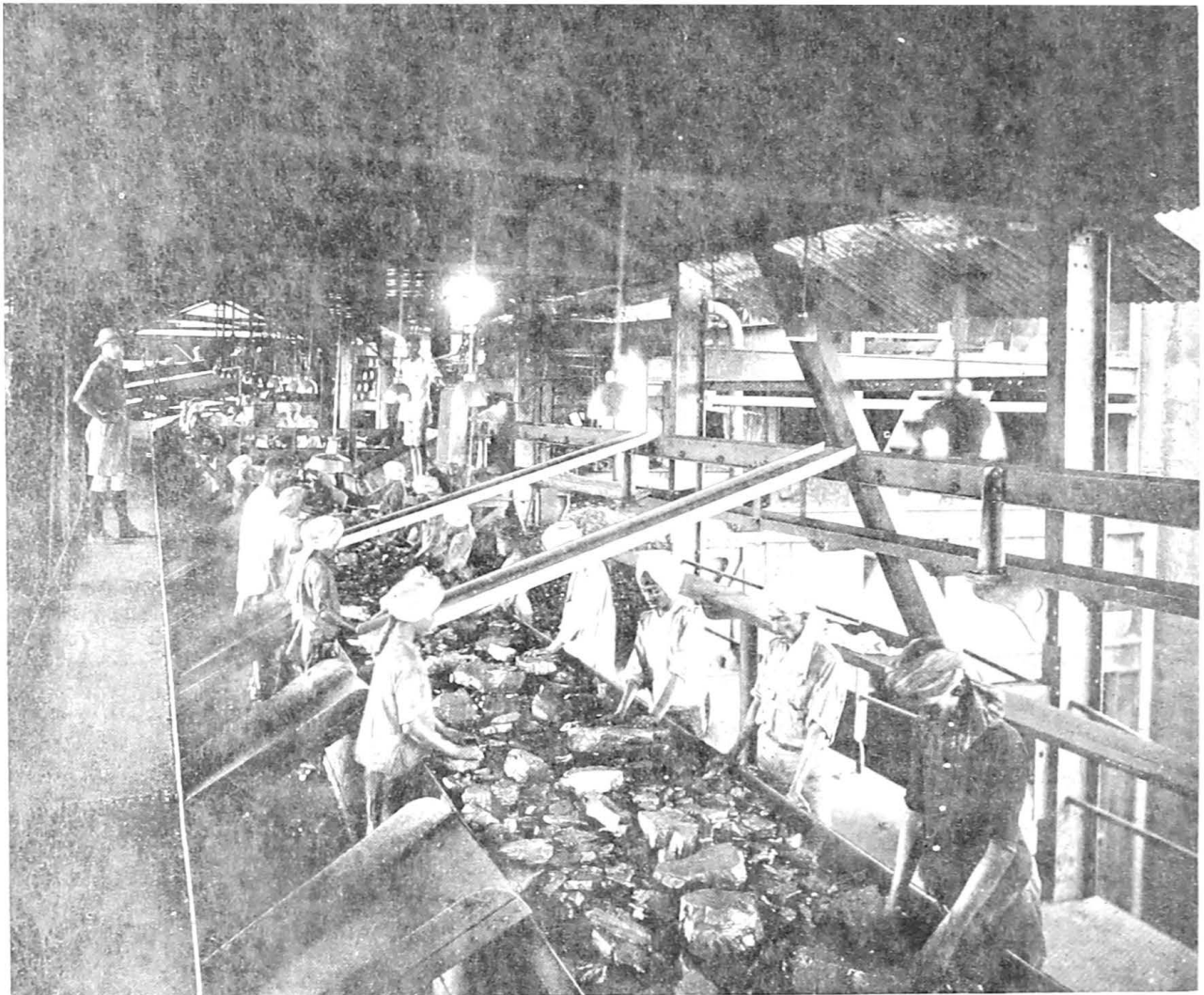
Much has been done to improve underground working conditions. The method of working is "pillar and stall," the pillars varying in size from 50 feet square

ventilation and for dealing efficiently with fire or floods.

All pits are fully equipped with modern machinery and laid out on up-to-date lines; with the exception of the winding engines all machinery underground and on the surface are driven by means of electric motors. The use of electricity has been greatly extended and there is now at each of the collieries a power station capable of supplying all needs.

Efficient Transport Facilities.

A great deal has been done to improve transport arrangements underground—all main haulages now installed are of the slow moving endless rope type, while direct rope haulage is used for the dip workings and



Coal Screening Plant, Singareni. An Internal View.

near the surface to 150 feet square at a depth of 1,000 feet. The stalls have an average width of 12 feet. In recent years the depth at which mining operations are carried out has increased, and a large percentage of the output now being raised is mined at a depth of nearly 1,000 feet, while the depths in previous years ranged between 300 and 400 feet. The underground workings are well ventilated by double inlet "Sirocco" fans. At Singareni the total quantity of air passed at the two mines through the workings is about 650,000 cubic feet per minute, while at Tandur provision has been made for a total quantity of about 400,000 cubic feet per minute. In laying out the underground workings particular attention has been given to isolating districts by means of solid coal barriers for the purposes of good

self-acting inclines to the rise. Much has also been done to concentrate output; for a much smaller output 25 years ago 13 mines were worked, while at present only four are worked and are capable of raising 4,500 tons per day. A systematic method of machine mining has been introduced which will have the effect of reducing accidents and assist in eliminating underground female labour. Underground officials have been specially trained and their hours of work have been shortened with a view to meet the special needs of each underground district. A qualified lecturer has also been appointed for the purpose of giving lectures on all practical mining subjects to these officials.

Ever since the collieries were opened the three shift system has been in vogue, and no labourer works for

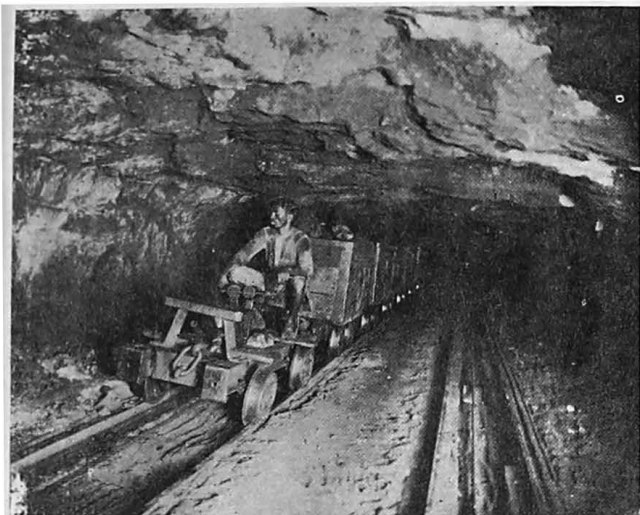
Great Britain and the East.
October 28, 1937.

23

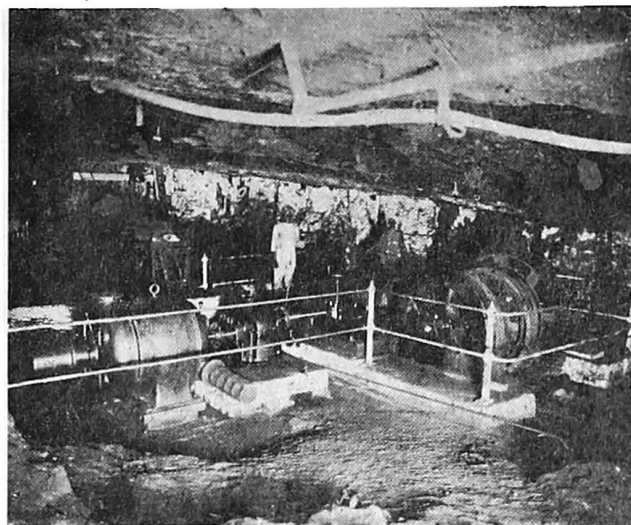
more than eight hours a day. The British India Workmen's Compensation Act of 1923 (amended up to 1929) governs all compensations for accidents. In 1921 a provident fund was started, of which all subordinate officials, clerical and other junior staff in receipt of monthly salaries are now members. A savings scheme was brought into operation in 1934 for the benefit of

Amenities for Employees.

At the two collieries approximately 10,000 persons are regularly employed, the bulk of whom are housed in the vicinity of the mines. The drinking water supply at Singareni is obtained from a large tank formed by a dam constructed by the company in the most suitable catchment area. The water after being passed through



Conveying Loaded Tubs to Pit Bottom.



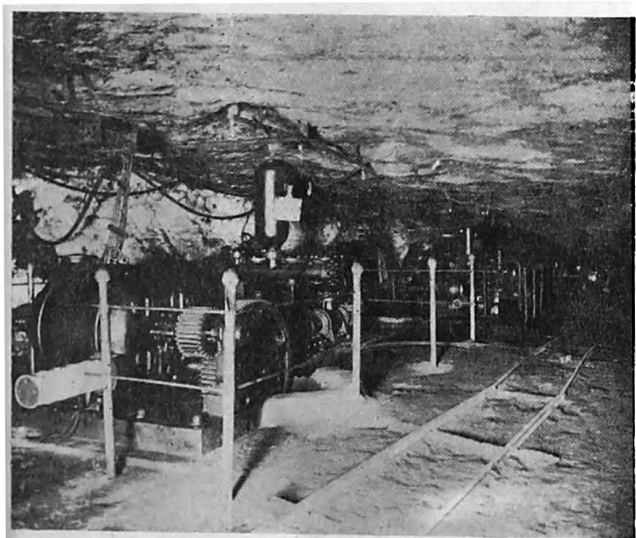
Underground Main Winding Engine, Singareni.

daily paid employees. Under this scheme a certain sum of money is collected each month on which 5 per cent. interest is allowed by the company.

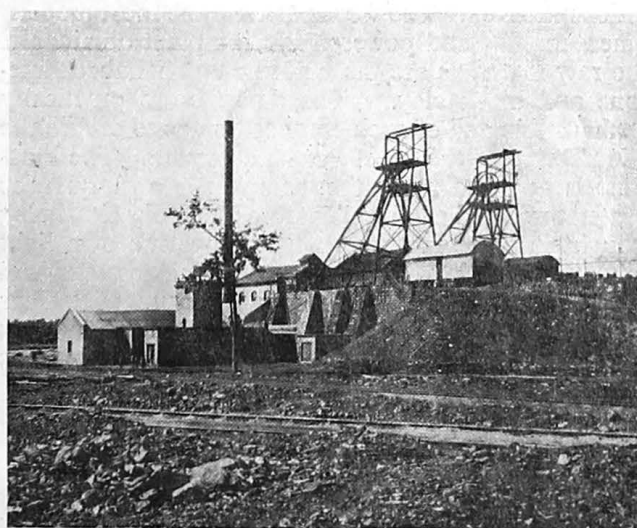
Electric Power.

At Singareni collieries electric power is generated at 2,200 volts, this being a three phase 25 cycle supply. At the distributing centres the voltage is stepped down to 440 volts for all motors under 50 horse power rating,

a sand filter is then distributed in pipes to various parts of the area by pumps. Water from other sources is passed through sand filters and these arrangements ensure an adequate supply of pure water to the workmen in the lines around the pits and on the northern side of the coalfield. In the underground workings of Strutt Pit drinking water is fed by means of galvanised iron pipes to each district of the pit as near as possible to the working place, where it is stored in small tanks



Underground Pump, Singareni.



A General View, Strutt Pit, Singareni.

while motors of 50 horse power and over are run at the generated pressure of 2,200 volts. At Tandur electric power is generated at 3,300 volts, this being a three phase 50 cycle supply. At the distributing centres the voltage is stepped down as at Singareni. At both collieries well-equipped mechanical and electrical workshops have been erected in which all repair work and the manufacture of certain plant and material for mining use is carried out.

in suitable places for the use of the workers. At Tandur similar arrangements have been made.

A special department deals with the removal of all refuse above and below ground, and special precautions are taken to prevent the spread of epidemic diseases. At no time has any serious epidemic involving a large loss of life occurred. The employees are housed in stone and concrete buildings—sometimes in rows and in the new districts in detached dwellings surrounded by

fencing, leaving ample ground for cultivation of garden produce. At Tandur a large number of permanent quarters have been erected, and they are of a more spacious and up-to-date design than the older types at Singareni. There is a first class hospital with one European and three Indian doctors, with a bacteriological department and X-ray equipment at Singareni. There are 70 beds capable of extension to 110 beds in emergency. There is also an isolation ward of 20 beds capable of extension in the event of an epidemic. A fully qualified Indian nurse attends on the wives of Indian employees at their own homes. At Strutt Pit there is a dispensary for the treatment of minor cases and for the treatment of accidents occurring at any of the pits. Each underground district is provided with a well-equipped ambulance box for the early treatment of accidents before they are removed to the surface. An ambulance wagon is also provided for the removal of accident cases from the mines and other cases of illness

from homes to the hospital. At Tandur collieries a fully equipped hospital of 20 beds together with an isolation ward and other quarters has been erected for the treatment of accidents and all cases of illness.

The staff take a keen interest in providing recreation for the workpeople, and two football tournaments are organized annually between teams from each pit and department. During the past two years keen interest has been taken in the Boy Scout movement, there being a total of 109 Boy Scouts in six troops. The Indian officials and subordinates have a well equipped recreation club supplied with current newspapers and there are courts for tennis and badminton.

The average dividend distributed on capital has been 4 3-5 per cent. during the five years, and this should be quite sufficient proof that everything possible is being done to sell the coal at competitive rates and to improve the conditions of living of the workers.

“Char Minar” Cement

Hyderabad State has high-class natural resources for the manufacture of cement. The Shahabad Cement Company began work in 1921 with the object of exploiting the cement-making raw materials in the State and providing Southern India with good Portland cement at reasonable rates, thus enabling this part of India to develop its construction works under the same favourable conditions as other parts of the country. The works are located at Shahabad, Deccan (121 miles by railway from Hyderabad City), on the Great Indian Peninsula Railway main line from Madras to Bombay, with sidings entering the works to facilitate the receipt of coal and stores and the dispatch of cement direct from the warehouses into broad gauge wagons to all stations in India. The works contain the most modern cement-making and power-producing plant obtainable. The raw materials are the well-known Shahabad limestone and black clay. The deposits are practically inexhaustible and of such composition as to ensure the manufacture of the finest Portland cement. The limestone is quarried from the company's own quarries located three and a half miles from the works site, being brought into the factory on the company's own light railway. The clay deposits are within a few hundred yards of the factory. The manufacture of “Char Minar” cement began in 1925, and the demand has been increasing so steadily that continuous extensions to the plants became necessary. The works are now capable of producing 140,000 tons annually. The quality has improved with development, and “Char Minar” cement now far exceeds in strength the demands of the latest British standard specification. It hardens so rapidly that at three days the strength of standard “Char Minar” cement sand mortars exceeds the British standard specification demands at seven days.

Manufacturing Process.

The cement is manufactured by what is known as the rotary kiln “wet process” wherein the raw materials are pulverised and mixed in correct proportions in the presence of water, forming a thick liquid called “slurry,” this method having been selected as the most suitable and economical for treating the argillaceous and semi-pure limestones and clay comprising the raw

materials. The works plant consist of a stone crushing department, clay wash mills and pumps, raw material wet grinding plants with correction and storage basins, coal drying and pulverising plants, as also rotary kilns and cooling plants wherein the “slurry” is calcined and the subsequent cement clinker cooled. Clinker storage and cement grinding mills, cement storage and packing plants with the necessary steam-raising and power generating units are also of the latest models.

The limestone is dumped directly into gyratory crushers having a capacity of 90 tons per hour, and subsequently passes through hammer mills to give fine grit, when it is elevated into three reinforced concrete hoppers each of 100 tons capacity. From these hoppers the limestone grit is extracted by adjustable feed tables and, together with a regulated proportion of “clay slurry” and water, enters the raw grinding mills, which are revolving patent compound tube mills—each containing three chambers, in the first two of which steel balls granulate the material whilst in the last compartment special small steel cylindrical bodies pulverise the material extremely finely, whence it issues from the outlet ends of the mills in the form of a thick homogeneous liquid or “slurry” containing about 32 per cent. of water. This “slurry” gravitates to bucket elevators installed in duplicate to ensure continuity of operation, which lift and deposit into either of three reinforced concrete correcting silos, each having a “slurry” capacity equivalent to 135 tons of dry raw material. The “slurry” leaving the tube mills is, chemically tested at frequent intervals and the proportion of limestone and clay adjusted to give the desired approximate chemical composition of the “slurry,” and the final adjustment is made in the correcting silos, the “slurry” in which is rapidly agitated by compressed air supplied by adjoining air compressors. Above the correcting silos is a small graduated “clay slurry” tank from which requisite quantities of clay are obtained. In operation silo No. 1 is being filled, a second is being corrected, whilst the contents of the third, after having been passed as “correct” by the works chemist, are run from the silo by gravity to either of two 63 feet diameter circular storage basins each of which contains about 1,200 tons of “slurry,” enough for several days' operation of the rotary kilns. The “slurry” in these storage

Great Britain and the East.
October 28, 1937.

25

basins is kept in a continual state of agitation by a mechanical mixing device with four sets of agitators which by reason of its action has become known generally as the "Sun and the Planet" type mixer, with compressed air agitators in addition. Adjoining the storage basin is a pump house where triplicate sets of double and treble acting ram pumps are installed, two being in operation, the third acting as a stand-by. The pumps extract the "slurry" from the storage basins and pump it to the special adjusting device feeding "slurry" into the rotary kilns, the quantity being under the control of the operator at the firing end of the kilns, the surplus "slurry" being automatically returned to the storage basins.

Second Stage.

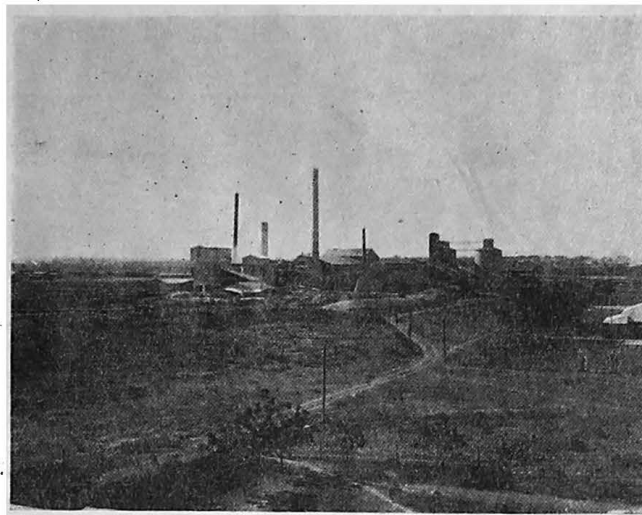
The second stage is a chemical one: the prepared raw materials are subjected to intense heat which ultimately raises them to the point of incipient fusion when chemical combination takes place and a cement "clinker" is formed. This operation is performed in kilns of the rotary type, one of which consists of a cylinder of sheet steel 175 feet long by 7 feet 6 inches diameter at the "slurry" inlet or upper end, enlarged



General View of Limestone Quarries.

to 8 feet 6 inches diameter in the burning zone at the lower end, and is lined throughout with firebricks to protect the shell from the burning temperature of the gases of combustion. Four steel tyres are mounted at suitable points on the outside of the kiln shell, which are supported on steel rollers set at an angle to the horizontal, the kiln having an inclination of about half an inch to one foot. A circular driving rack is mounted on the outside of the kiln shell and the kiln is driven through steel gears by means of a variable speed electric motor and revolves very slowly, varying from one revolution in 45 seconds to one in two minutes, the operator being able to obtain about ten speeds between these limits. The second kiln is of the Unax type with a productive capacity about twice that of the smaller kiln. The necessary temperature is obtained in the burning zone of the kilns by injecting by means of an air blast finely pulverised coal into the lower ends of the kilns which are closed by specially constructed and movable hoods. The raw materials in the form of "slurry" are run into the upper ends of the rotary kilns, and as the latter rotate the "slurry" slowly travels downwards, first meeting the hot gases produced by the combustion

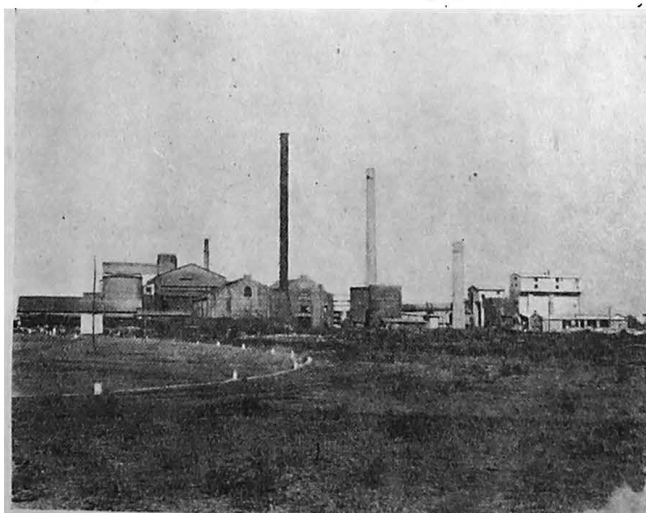
of the powdered coal at the lower ends of the kilns, which evaporates the water in the raw materials which, then dry, pass towards the burning zone exposed to an increasing temperature until the carbonic acid gas from



General View of Works from North-West.

the limestones is expelled and the materials enter the lower or "burning zone" where at a temperature of 2,600° to 2,800° F. the lime enters into chemical combination with the silica and alumina of the clay material forming silicates and aluminates of lime which are the chief constituents of Portland cement, the sintered material so obtained being known as "cement clinker." The clinker passes from the burning zones to the discharge openings in the hoods of the kilns into the respective kiln coolers, the heat extracted therefrom being returned to the kilns or utilised in drying the coal prior to pulverisation.

From the small hopper the finely powdered coal is extracted by double measuring worms and injected through a "burner" or pipe into the lower or firing ends of the rotary kilns by means of compressed air supplied by high pressure fans, the amount of coal injected being regulated on the firing platform by the operator in charge. The coal ignites the moment it



Another View from the South-East.

leaves the "burner," the ash from the coal passing with the waste gases through the kilns and up the kiln chimneys which are constructed of reinforced concrete

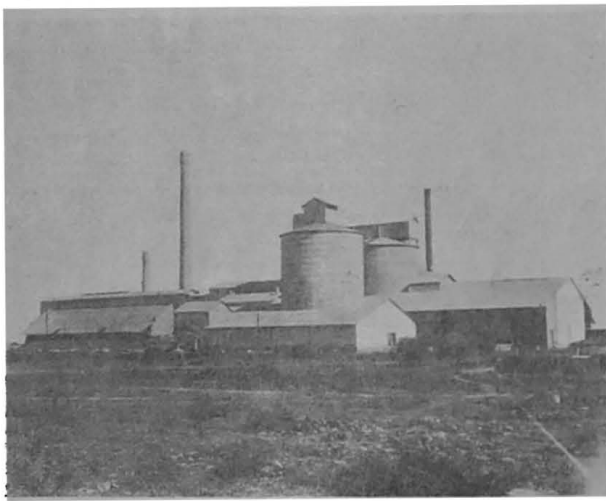
lined with firebricks. After being cooled the cold cement clinker drops from the discharge ends of the coolers into shaker conveyors which transport it from the kiln building, under the works railway sidings, to a special type of chain conveyor which carries the clinker to the clinker store, which has a capacity of 5,000 tons and is open to the air whilst being protected by a roof from the rains. The same conveyor carries clinker, extracted from any part of the clinker store, to the hoppers over the clinker grinding mills and also transports gypsum from the works store to the hopper for gypsum alongside the clinker hopper in the cement mills, all the operations being automatic. Stored clinker pulverises much more readily than freshly burnt clinker, and the provision of this large clinker store will therefore result in considerable economy in power fuel and at the same time has enabled a reduction of expenditure in the provision of storage bins for the finished cement.

From the clinker hoppers in the cement mills the clinker is fed by means of adjustable feed tables, along with a small regulated quantity of gypsum, into the grinding mills where the third and last stage in the manufacture of cement commences, namely, the fine

the cement silos, which transports the cement and discharges it into the cement silos or alternatively the cement is pumped by compressed air into the silos. One reinforced concrete silo is divided into nine compartments having a combined capacity of 3,500 tons of cement, and the other is a single compartment silo of the same capacity. From the silos cement is extracted through pipes by vacuum pumps connected to automatic vacuum packing and weighing machines, which pack and accurately weigh cement into bags of 112 lbs. weight. Each automatic vacuum packer is arranged for operation by two men who can pack and weigh ten tons of cement per hour, the whole operation being conducted in an atmosphere free from dust. When removed from the packer the mouths of the sacks are closed by wire ties and the bags loaded direct into broad gauge closed wagons on the sidings alongside the packing shed. All the machinery is driven by electric motors, the majority of which are directly connected through suitable steel reduction gears and flexible couplings to the various machines.

Water Supply.

Water for the steam power plant and the works'



The Works from the South-West.



Steam Shovel at Work.

grinding of the cement clinker and regulation of the setting time of the cement produced thereby. These two mills are of the latest type, being patented compound tube mills of the same construction as the raw mills which granulate and pulverise the "wet" raw materials, but are arranged to grind "dry" material. In each of the mills there are three chambers, the first two containing steel balls of various sizes, whilst the last chamber contains special cast steel cylindrical grinding bodies. In one operation and without the use of sieves these mills finely pulverise seven and 15 tons respectively of cement clinker per hour, the mills being driven by a 300 h.p. synchronous electric motor with magnetic clutch directly coupled to the pinion shaft through a flexible coupling and a 600 h.p. auto-synchronous motor respectively.

A dust collecting apparatus is installed in the cement mills to remove the dust from the machines together with dust filters which automatically recover the fine particles of cement and mix them with the bulk cement on its way from the mills to the cement warehouse. The finely ground cement is conveyed by warm conveyors and elevators to a rubber band conveyor, on the top of

general use is obtained from the Kagna River situated about a mile from the works, electrically driven centrifugal pumps being installed for pumping the water. The water is soft and free from salt.

Facilities for Workpeople.

Labourers work in three shifts, no one working for more than eight hours a day. There is a fully equipped hospital on the works with a whole-time doctor and trained midwife and compounder. There is a primary school with an average attendance of 120. Facilities for gymnastics, cricket, hockey, volley ball and tennis are provided, as also for many indoor games. A club house pavilion is provided for the member employees of the company. Various washing places have been provided. A building for serving as a rest house, dining room and wash house for male and female employees has just been completed. There is a provident fund for the clerical and superior staff with very liberal terms.

A Profitable Industry.

The company supplies Portland cement to well-known railway companies including His Exalted High-

ness the Nizam's State railway, the Madras and Southern Mahratta Railway Company, the G.I.P. Railway, and the South Indian Railway Company, and bridges, reinforced concrete and general purposes and for harbour works at Madras. For the Mettur Dam alone 226,000 tons of "Char Minar" cement were consumed. Out of a share capital of Rs.35 lakhs the Hyderabad Government have shares equal to Rs.6 lakhs. In spite of providing facilities for employees on

the latest methods and scales and paying royalties to Government and selling cement to them with rebates on a sliding scale, the company has been making very good profits, the dividend declared at the last annual meeting having been as high as 22½ per cent. For purposes of further economy in advertisement and sales, the company has just joined the cement merger of India covering all the ten leading cement factories in this country.

Nizam Sugar Factory

In 1933-34 the area under sugar cane in these Dominions was 46,000 acres, and the estimated yield of *gur* was 72,000 tons. The average annual import of sugar has been estimated at 19,800 tons and the net import of *gur* at 24,000 tons, while the local production of *gur* has been put at 65,500 tons and the *gur* consumption in the State at 107,500 tons annually. There is at present no factory producing sugar, but a company has just been floated. With a view to encourage intensive cultivation and enhance the earnings of *haiyats*, His Exalted Highness the Nizam's Government spent Rs. 426.79 lakhs on the construction of the Nizam Sagar Dam, reservoir and canals. According to departmental estimates this project should yield 10.82 per cent. on the capital outlay. The following extract from the report by the sugar technologist should be interesting:

"The climatic conditions, specially the temperature and the rainfall, are suitable for the cultivation of good varieties of sugarcane and the production of heavy yields. A good deal of the soil in the tract has physical texture of the right type for cane cultivation. In respect of the production of cane varieties suitable for this area, the Department of Agriculture has already done a certain amount of preliminary work, and a number of Coimbatore and other varieties have been tried at Himayath Sagar, Rudroor and other farms. The results obtained show that there is not likely to be any serious difficulty in getting varieties of cane which would be superior to the local varieties. The one direction in which further research work appears to be called for is in the testing of some early and late ripening varieties, which will help to prolong the cane crushing season. The Mysore State was faced with a similar problem, and the cane crushing season was expected at first to last for four and a half months only. But by suitable selection of varieties and arrangement of planting time the sugar factory is now expected to run for nine months in the year, which is a record for Indian factories. There is no reason why Hyderabad should not also be able to get similar results. Cane cultivation is essential for a proper system of rotation of crops. As in the case of other canal systems in India, the financial success of the Nizam Sagar Canal is bound to be closely linked up with the development of cane cultivation. This crop responds to irrigation and good cultivation and is sufficiently valuable to pay for irrigation. An important advantage in the development of cane cultivation under the canal from the point of view of the sugar manufacturer is that the cane areas will be concentrated along the canal, and the supply of cane will thus be considerably facilitated. In order to realise the importance of this aspect, it may be

mentioned that although there is in the aggregate a considerable area under sugarcane in the Bengal Province, yet it is so scattered that adequate supplies for even a moderate sized sugar factory are difficult to obtain in any locality, with the result that no sugar factory has yet been established in that Province. The Nizam Sagar Canal tract of the Hyderabad State will be free from this defect. From the cultivators' point of view the cane crop possesses special advantages. It is not only the most profitable crop but is also of vital importance in the agricultural economy of the country. It is the only cash crop which provides the cultivator with funds out of which to pay his irrigation dues and other charges. It also provides as a by-product fodder for his cattle. This is an important consideration particularly when, as happens frequently, the rainfall is insufficient. Sugarcane when grown in rotation with other crops has a beneficial effect on them. These crops give higher yield owing to the manurial residues

*Contractors to His Exalted Highness
the Nizam's Government.*

CHHAGANTAL & CO.,

Merchants and Contractors,

London Office: **CARNAC BUNDER,
194-200, BISHOPSGATE,
E.C.2. BOMBAY 9.**

MOHAMED OSMAN & Co.,

General Merchants and Contractors,

**4195/96, STATION ROAD,
SECUNDERABAD, DECCAN, INDIA.**

**THE
DECCAN PAPER MILLS CO., LTD.,
POONA, BOMBAY,
INDIA.**

Manufacturers of: Rubbish and Watering Carts; Pressed Steel Boats; W. I. Ornamental Gates, Railings, etc; C. I. Spiral Staircase; Steel Windows and Doors; Collapsible Gates, and every other Engineering requirement.

Stockist of: Hardware, Metals, Rubber and Canvas Hose, etc.

**THE SHAPARIA IRON & STEEL WORKS, LTD.,
Parel Road, Cross Lane, Bombay, No. 12.
Telephone: 40408. Telegram: "SHAPARIA."**

left behind and the improvement in the mechanical condition of the soil owing to stirring up by the deep root system of the sugarcane. The cane crop also provides remunerative employment for the cultivator for the whole year. Finally, in the present general depression when the prices of all exportable crops have gone down, if by the development of cane cultivation the return to the cultivator is increased, he will be afforded a much-needed relief. From the sugar manufacturers' point of view the area enjoys special advantages in respect of cheap labour and material."

The estimated area sufficient for an up-to-date sugar factory in the Nizam Sagar area was put at 5,000 acres by the sugar technologist, but the area irrigable under the Nizam Sagar project has been estimated at 275,000 acres. Very recently the Nizam Sugar Factory has been floated with a share capital of Rs.35 lakhs, half of

which has been purchased by the Government and five lakhs by the managing agent. Rs.7½ lakhs have been offered to the public and Rs.5 lakhs to sugarcane cultivators. With a view to facilitate the operations of the factory and give it permanence, the Government have given it a monopoly for sugar manufacture in the Nizam Sagar area. The natural resources are so plentiful, the Government so anxious for the welfare of the population, and the public so enthusiastic in encouraging local products, that the future of the Nizam Sugar Factory is amply guaranteed. The extension of the railway into this area, the appointment of an officer with the rank of a first taluqdar collector for supervising agricultural operations in this tract, the experiments by the agricultural and the co-operative departments—all these deserve more elaborate treatment than is possible in this survey.

Forest Potentialities

Compared to the total area of the State, the area classed as "forest," namely, 62 lakhs of acres, is not very satisfactory speaking quantitatively, but these areas offer splendid scenery and game for the well-to-do, serve as a buffer for the cultivators in times of famine, and above all possess raw materials for the development of several first-class industries vitally important for the well-being and progress of the people. Tanning materials, vegetable dyes, fibres and flosses, oleoresine

and gums, drugs and spices, edible fruits and animal products promise good scope for small scale industries, while the bigger industries having very bright prospects are paper and match manufacture.

Bamboo for Paper Pulp.

The most important substance from which paper pulp is prepared is bamboo. To determine the possibility and sustained yield of bamboos for establishing a paper pulp industry, the bamboo forests of Asafabad have been explored and a detailed and systematic valuation survey of the bamboo areas has been made. A bulletin was issued by the Industries Department on this subject. The bamboo is a valuable product from the revenue viewpoint. The generally prevailing kind is *Dendrocalamus-Strictus*. It is almost solid and therefore is popularly called "male" bamboo. It occurs in the damper forests of Telingana Divisions of Adilabad, Warangal, Karimnagar and Amrabad Hills of the Mahboobnagar Division. The bamboo areas are being worked systematically with a rotation of four to five years. Hand-made paper is of a high standard in Hyderabad, and many Government departments and public institutions give it preference over imported paper. It will not be long before a paper factory is started on a scale similar to the coal and cement factories.

Match Manufacture.

Most of the soft wood such as Anduk, Borgu, Gargu, Chidpa, Gumpani, Kumarpunki, Tellapunki and Tapsi were regarded in the past as unsuitable for match manufacture, but some eight years ago there was a demand for this wood and consequently a monopoly was given by the Government for 10 years in 1928. The Mahboobia match factory at Mahboobabad was the first to be started and to-day the Government are realising Rs.7.77 lakhs as excise duty on matches made locally. The scope for the development of this industry is also very great.

LINE MATERIAL COMPANY

South Milwaukee
Winsconsin, U.S.A.

STREET LIGHT FITTINGS

DISTRIBUTION AND POLE
LINE HARDWARE

PROTECTIVE EQUIPMENT
SUCH AS LIGHTNING
ARRESTERS, EXPULSION
TYPE DISCONNECTING
FUZE CUTOUTS, ETC. ::

Sole Agents for India:

KILBURN & CO.

Post Box No. 61, Calcutta.

Industries: Ancient and Modern

Latterly H.E.H. the Nizam's Government have given an impetus to such industries as have been languishing for want of patronage, and now the beautiful silks of Sangareddi, the himru or patterned cloth woven from cotton and silk,* cloth of gold of Aurangabad, the erst-while capital of Aurangzeb, the world-famed "bidri" inlay work of Bidar, the carpets of Warangal, the silver wire ornaments of Karimnagar and the soap of Hyderabad are seen not only in the local markets but are even exported. Attention is also paid to newer industries such as furniture-making, the manufacture of fancy buttons (of which Hyderabad exports a large quantity) and the cap tassels made at Yadgiri which is fast becoming the centre of this trade for the whole of India. Although it has not been possible to restore to their pristine glory such industries as paper-making, once the monopoly of the suburbs of Aurangabad, or chintz printing, the centre of which was ancient Patan or Paithan, still it is remarkable how in spite of depression, changes of fashion and import of cheap "gold" thread, silk, buttons and artificial dyes, Hyderabad is still coping with the stringency of the market with a fair amount of success.

Cottage Industries Institute.

This Institute was established in 1931 at Mushirabad, now a suburb of Hyderabad, for the development of cottage industries in the Dominions. Another purpose for which the Institute has been started is to train young men who are required to serve as demonstrators in the arts of weaving and dyeing in the villages. The

* It might interest the reader that patterns of this cloth are represented in some of the ancient frescoes at Ajanta.

Institute, built at a cost of Rs.1,20,000, accommodates the following sections:—

- | | |
|----------------------------------|-----------------------------|
| 1. Weaving. | 6. Durry and carpet making. |
| 2. Dyeing. | 7. Silk weaving. |
| 3. Knitting. | 8. Rattan work. |
| 4. Embroidery. | 9. Lacquer work. |
| 5. Woollen cording and spinning. | 10. Namda making. |

Training is given to students of artizan classes who come from the districts. Handsome stipends are awarded to these students.

The Institute has a Sales Depôt attached to it. The Show Rooms, which have lately been constructed and equipped at a high cost, are located near the old French Gun Foundry on the Nizam College Road. The products of the Cottage Industries Institute along with the famous carpets and rugs of Warangal; the Bidri ware of Bidar; the toys of Nirmal and the well-known Himru goods of Aurangabad are exhibited and sold at the Depôt.

Cotton Mills.

Cotton is the most lucrative crop grown in the Mahratwari portion of the Dominions, the total annual value of cotton exported being on average from Rs.3½ to 4 crores. There are 336 ginning factories and 100 cotton presses besides six spinning and weaving mills with 123,572 spindles and 2,134 looms. The cost of cloth manufactured in these mills was Rs.60,74,288 in 1344 F. (1934-35). There is a flourishing handloom weaving industry also, which after meeting the requirements of the home market was able to export cloth of the value of Rs.13 lakhs in the same year.

Miscellaneous.

Oil-seeds are produced in large quantities, the total value of oil exported being about 1½ crores a year. The value of tanned hides and skins exported was Rs.29 lakhs in 1344 F. (1934-35).

Rural Reconstruction

For over two decades the Hyderabad Government have been straining every nerve to ameliorate social conditions in villages and make the average home in the Dominions happy and contented. The Famine Board has guided the activities of the Well Sinking Department which has sunk a large number of wells in villages at a great cost to Government. The Road Board, the Railway Board, the Board for Civil Aviation, the Board for Broadcasting and the Board for Rural Reconstruction have all co-operated in handling the huge problem of rural development. Over four thousand miles of road have been laid by the P.W.D. apart from the much longer mileage of local fund roads. The Board for Broadcasting has planned educational lectures for the villagers through the vernacular, and several lectures and plays for this purpose have already been organised with great success. As referred to in earlier paragraphs, a combined road, rail and air transport programme is being deliberated upon with due regard to

the interest of the villager. Apart from the splendid water supply organised for the Hyderabad City, the District Water Supply Department has already completed the water works at Nanded, Latur, Aurangabad, Raichur, as well as at many other smaller towns. The District Electricity Department has already illuminated the towns of Aurangabad, Nanded, Raichur, Latur, Gulbarga, and many schemes are under completion. In addition to the strenuous activities of the agricultural and the co-operative departments for the improvement of the lot of the average raiyat, the Government caused enquiries to be held with regard to rural indebtedness. An agriculturalists' relief regulation is in force and a Land Alienation Act is being tried in some of the districts. A Bill for debt conciliation and another for the establishment of land mortgage banks are being considered, and it may not be many years before the hopes expressed in the following words by His Exalted Highness the Nizam in the course of his reply to an address at Raichur are realised in every homestead in every village:

“My beloved subjects: The facilities afforded by my Government may prove beneficial, but you should also exert yourselves in your own interests and for your own welfare. Improve your agriculture and your trade. Cultivate the habits of hard work and thrift. Save yourselves from indebtedness and wasteful expenditure.

Avail yourselves of Government departments like the Agricultural, the Commerce and Industries, the Co-operative Societies and other departments which have been created for educating you. . . . I am deeply interested in village uplift. It is my wish that the life of the villagers may become increasingly prosperous.”

Agricultural Progress

It was in the reign of the present His Exalted Highness the Nizam that the Government took action to assist the cultivators of the soil in improving their condition by production of more and better produce. The Hyderabad State has the largest compact area producing cotton of a superior quality. This variety of cotton is known as Gaorani and is grown in the Marhatwara Division of this State. It was noticed that this cotton was losing its value by getting mixed with inferior kinds. The cotton and the country were losing their reputation on the one hand and the cultivators were losing in money on the other. The Government established the Agricultural Department in the year (1322 Fasli) 1912 A.D. with the main object of saving the Gaorani cotton from deterioration. Arrangements were made for supply of pure Gaorani seed to the cultivators on large scale. This helped in protecting the reputation of the area and the interests of the cotton growers. During the period from 1322 to 1337 Fasli, the work of the Agricultural Department extended in the establishment of Experimental Farms at Alir, Kamareddi, Sangareddi, Mahbubnagar and Parbhani. An Engineering section was also opened, which assisted the public in boring of tube wells and in installation of pumps over them.

Agricultural Department Reorganised.

Realising that a more forward policy was needed for the improvement of agriculture, a thorough reorganisation was effected in the year (1337 F.) 1927. Since then, the activities of the department have increased and extended in all directions. On the Research side, the Department is equipped with a Chemical Section, a Botanical Section, a Horticultural Section, an Entomological Section and an Animal Husbandry Section. For experimental work, fully equipped Experimental Farms have been established at Parbhani for the Godavari Division of the State, at Raichur for the Karnatik Division, at Warangal for the East Telingana Division and at Himayatsagar, Sangareddi and Rudrur for the West Telingana Division. There is a Demonstration Farm also at Mahbubnagar in the Division last named. For the purposes of introduction of improvements in the villages a large number of agricultural staff is employed, and is posted to work in the districts.

Demonstration and Assistance.

The ryot is being helped by the Government through the Agricultural Department in as many ways as possible. He is being educated in improved agriculture by the establishment of aided farms and demonstration plots amounting to thousands in number, on his own land in the village, by carrying out practical demonstrations of improvements in the villages, by distribu-

tion of free vernacular literature and by holding of shows and exhibitions at suitable occasions.

The Department has arranged to advise the cultivators and help them in the construction of embankments to save their land from ruin. There are arrangements to supply the farmer with improved seeds, plants, manures, implements and other agricultural requisites from the Department without difficulty. The Government is also helping the poor ryot financially. Promising cultivators are given grants-in-aid to help them in improving their farms according to the advice of the Agricultural Department. Demonstration plots are established on the ryots' lands, all the cost of which is borne by the Department and the produce is given over to the ryot. Similarly, all demonstrations for the cultivator are carried out at Government expense, and the advice of the Agricultural Department is available to him free of cost. An amount of Rs.3,75,000 is sanctioned annually from which taccavi loans are granted to farmers with a view to help them to secure improvements, including machinery and pumping plants, for their farms.

Rural Development.

Apart from the definitely agricultural improvements which the Agricultural Department is endeavouring to popularise in the districts, an effort is being made to develop rural life in general. A Rural Development Centre is established at Patancheru, about 20 miles from Hyderabad, which has got demonstration sections on poultry keeping, goat breeding, fish rearing, kitchen gardening, fruit growing, flower gardening and cultivation of field crops. These industries are being developed in the villages under the influence of this centre, along with the introduction of other cottage industries, such as weaving on improved looms, dyeing, lacquer work, etc. Village Improvement Associations have been started to train the villagers in the work of improvement of their own lives. Day schools for children and night schools for adults have been established. Reading Rooms and Libraries have been opened in some villages. Propaganda in the matter of temperance is carried out. Medical help is arranged for and training in child welfare and midwifery is given.

Economic Results.

The Government is at present spending about Rs.9 lakhs on the Agricultural Department annually and the ryot is profiting thereby. For instance, improved sugarcane introduced by the Agricultural Department covered no less than an area of ten thousand acres in 1344 F. This means a net profit to the ryot of at least ten lakhs of rupees in one year from one improved crop alone. Besides sugarcane, there are a number of other improvements which have been introduced and from which the ryot is deriving large profits. As the work develops the profits to the country will increase.

Hyderabad's Strong Financial Position

The following summary of the prefatory note to the Budget of 1347 F. testifies to the strong financial position created by steady adherence to sound principles applied to revenue and expenditure alike:—

1347 Fasli is the first year of the sixth Triennium under the scheme of Departmentalisation of Finances which owes its origin to the financial genius of the Rt. Hon. Sir Akbar Hydari, who has provided the State with a steel frame of prudent finance which is eminently suited to local conditions and has admirably stood the test of time.

The normal receipts of the passing triennium were put at 852.96 lakhs and at a conservative estimate the coming triennium will bring in 896.67. The normal expenditure is also expected to rise from 824.11 to 858.98 in the triennium 1347-49 F. The normal surplus for the triennium will be 37.69, which is 8.84 more than for the passing triennium. The heads under which increases mainly occur are:—

(a) Railway receipts, which show a betterment of 15.70, resulting from an increase in the capital at charge and an improvement in railway earnings.

(b) Excise which yields an additional 15.00. This does not mean higher consumption, but is the result of the extension of the Madras system which is gradually stopping all avenues of leakage of toddy revenue. The consumption of liquor has during the last seven years decreased from 7.42 to 1.70 P. gall. per 100 of population.

(c) Paper currency, which yields 4.08 more than before owing to a steady expansion of paper currency.

(d) Land revenue records a normal expansion of 3.00.

(e) Sugar Excise.—The factory now under construction at Bodhan is expected to pay 3 lakhs annually. This may be regarded as an earnest of the indirect benefits that are to accrue from the Nizam Sagar.

(f) Vehicle tax, which is estimated to bring 2.60.

(g) Cigarette Excise.—The monopoly of manufacturing cigarettes is enjoyed by two factories in Hyderabad. It is proposed to impose a small excise duty on them which is expected on an average to yield a lakh each year.

(h) Post Office is expected to give 1.85 more, although it has to work at a considerable handicap by being denied the reciprocity of the service it renders and the concession it allows for British India post.

For the decrease of 4.63 in normal receipts, opium and ganja, interest and electricity are mainly responsible.

On the expenditure side also there is an increase in normals of 48.16 and decrease of 13.29 lakhs. The items chiefly responsible for the increase are Excise (6.74), Interest (6.67), Debt Redemption (6.84), Education (5.30), Medical (4.15), Agriculture (.70), Veterinary (.50), Broadcasting (.38), Aviation (.70), Archaeology (.35), Municipalities (.70), Petrol Cess and Vehicle Tax together are expected to yield 5.60, which the Road Board will administer for constructing roads exclusively.

The Life Insurance Fund.

The cost of management of the Hyderabad Life Insurance Fund will not, in future, be paid from the

General Revenues but charged to the Fund itself. Careful and repeated actuarial examinations of the assets and liabilities have shown that not only is the Fund in a position to meet all its working expenses but is in such a prosperous condition that after keeping a reserve of 15.21 for future use all subscribers, past and present, will be allowed a bonus of 2 per cent. per annum on the policies, costing Rs.25.67 in all.

Famine Relief.

Expenditure to be met from revenue receipts of reserve funds is not normalised, but allotments are made from year to year as circumstances may warrant. The Famine Fund gets an annual contribution of 15.00 from General Revenues and is estimated to stand at 285.20 at the end of this year (1346 F.) The Fund is utilised not only for actual famine relief work but provides draw wells of unpolluted water to those villages where shortage of water supply is liable to occur in a famine year, particularly where the prevalence of guinea-worm necessitates incentives to discard the use of ordinary step wells. The Well Sinking Department has up till now spent 28.21 for this purpose. It has completed Raichur District, where it has excavated 1,533 wells. It has since shifted into Gulbarga district, where 204 wells have already been completed and 246 are in progress. It is proposed to shift the department to Osmanabad as soon as Gulbarga is finished.

Industrial Investments.

The Industrial Trust Fund now stands at 96.39. The corpus of the fund is invested in large industrial enterprises, and its revenue receipts are utilised in giving loans and subsidies to small industries. Of the investments made during the year 17.50 put in the Nizam Sugar Factory shares, representing half the subscribed capital, deserves special mention.

Development of Gold Mining.

Other noteworthy features of the new triennium are the provision of 190.12 lakhs for original construction, 100.32 lakhs for road construction, 8 lakhs for Gulbarga water works, 5 lakhs for small town municipalities and 8 lakhs for gold prospecting. In view of the rise in gold prices it is confidently hoped that some of the sites of ancient workings will enable gold mining to be started as a commercial proposition, which will not only be an additional source of income to the State but will offer another field of employment to the population of Raichur, where famines are more liable to occur than in any other part of the Dominions.

Budget Estimates for the Year 1347 F.

For the year 1347 F. the estimated receipts are 894.17 and expenditure, inclusive of 15.84 for non-recurring grants is 876.51, giving an expected surplus of 17.66 for the year. Certain non-recurring grants for 1347 Fasli which deserve mentioning are: 7.03 for Hyderabad water works and drainage, .28 for literary compilation, .43 for special scholarships, .55 for equipment of the Central Unani Hospital now under re-organisation, 5.30 for equipment and construction of aerodromes and emergency landing grounds in city

and in the districts and providing one more aeroplane for the Aero Club.

Capital Outlay.

The capital programme for the years amounts to 155.77. Out of this 25.000 represent the grant for construction of university and police buildings decided to be financed from Loan funds. 103.07 for railway construction will be spent if the negotiations with the Government of India result in an early decision for starting construction of Nander-Adilabad and Parli-Bhir-Aurangabad lines. 11.77 is put under irrigation for extension of the distributaries to the lands commanded by Nizam Sagar exchanged from the Jagirdars.

It is expected that after meeting the heavy capital programme of 155.77 the closing balance for 1347 F. will amount to 119.73, which means that if so desired the whole of the capital programme can be financed without floating a loan.

Search for New Revenues.

"The above," concludes the Hon'ble the Finance Member, "is the story of the Hyderabad finances which the prospects of the next three years envisage.

We look to the future with confidence but to keep pace with the enormous growth of expenditure, and to enable Hyderabad to attain that height of prosperity to which it is destined to rise under the beneficent rule of our august Sovereign new sources of income will have to be sought."

"A Hopeful Budget."

His Exalted Highness, while giving his assent to the Budget, has been pleased to make the following observations:—

"The Budget is satisfactory. It is sanctioned as recommended by the Council. Fakhr Yar Jung, the Finance Minister, while maintaining the principle of departmentalisation, introduced by Sir Akbar Hydari, has produced a hopeful Budget which I value. My appreciation may be conveyed to him and to the Financial Secretary.

"The construction of the Secretariat Buildings, the linking of our telephone with the territories outside the Dominions, and other matters to which attention was drawn while sanctioning previous Budgets should be kept in view during the current year."

The Hyderabad Legislature

A MESSAGE FROM THE NIZAM.

Concluding his address before the Hyderabad Legislative Council, on September 22, the Rt. Hon. Sir Akbar Hydari Nawab Hydar Nawaz Jung Bahadur, President, Executive Council said: "I have the honour to be the bearer of a message from our August Sovereign to you and I am sure that the present occasion will, on account of that message, long be remembered in the annals of this House. I request you to pay to it the respect that is its due and to receive the message standing."

His Exalted Highness has commanded me to convey to you the following:

"To my beloved people my earnest prayers to Providence for their happiness and welfare!

"I had in my Firman, dated the 14th Jamadi-ul-Awwal 1338 Hijri, directed the then President of my Council to collect data which would enable me to devise a scheme of reform and expansion of the Legislature consistent with the educational and moral progress of my people. I have since then given constant and anxious thought to the problem of increasing the association between my people and my Government by the creation of a body or bodies representing the main interests in my State from which my Government could derive adequate and constant knowledge of the needs and desires of my people. Upon seeking the views of my Executive Council in this regard, I have received encouragement by the opinion tendered by them and have resolved that preparatory steps may be taken in this direction before the close of my Jubilee Year. I have entrusted the task of formulating proposals on the subject to the Constitutional Affairs Committee of my Council but I and my Ministers feel that in formulating proposals that Committee would be considerably assisted, in a matter which so closely concerns the public, if it has before it also the views of an independent and experienced body, consisting of

officials and non-officials alike. I have communicated my detailed instructions regarding the composition and the terms of reference of this Committee to my President of the Executive Council who is also your President and the bearer of this, my Message to you to-day. It is my wish that the work entrusted to the Committee should be completed within the shortest possible time and that the results should be submitted to my Government within a period not exceeding six months. I am confident that the Committee will realise the responsibility of the task entrusted to it and will discharge it in a manner worthy of its importance. 'I can only endeavour, but it is with God to dispose.'"

The Committee thus appointed by His Exalted Highness consists of the following members:—

- (1) Dewan Bahadur Aravamudu Aiyangar whom His Exalted Highness has been pleased to nominate as Chairman and who will have a casting vote.
- (2) Mr. Ghulam Mahmood Qureshi, H.C.S.
- (3) Professor Qadir Husain Khan.
- (4) Mr. Kashinath Rao Vaidya,
- (5) Mr. Mir Akbar Ali Khan.

Mr. Syed Yusuf Ali, H.C.S., is being specially detailed to act as Secretary to the Committee.

The terms of reference of the Committee have been defined as follows:—"Keeping in view the conditions in and the requirements and circumstances of the State, to investigate and report on all suitable alternatives for the more effective association of the different interests in the State with the Government whereby the latter may be placed in continuous possession of their needs and desires."

I am sure that all sections in this Council, in this great City and throughout the Dominions, will welcome with gratitude the lead given by His Exalted Highness in the direction of creating methods of consultation between his Government and the public.

CONTRACTORS TO
**HIS EXALTED HIGHNESS
THE NIZAM'S GOVERNMENT**



Famous all over the world for their wonderful quality and performance, Ericsson Telephones are the natural choice of Government Depts., Railways, Mines and other important institutions.

With the needs of to-day calling for the very finest in up-to-date equipment of all kinds, an efficient telephone intercommunication system must, of necessity, be included—hence Ericsson's.

We manufacture and instal complete automatic Exchanges for any number of lines.

Informative illustrated literature sent free on request.

ERICSSON TELEPHONES, LTD.

22 Lincoln's Inn Fields, London, W.C. 2

Telephones: HOLborn 6936

CALCUTTA OFFICE:

ERICSSON TELEPHONES, LTD.

Grosvenor House, 21 Old Court House Street, Calcutta

Ericsson

**INTERCOMMUNICATION
TELEPHONES**

"In the year 1795 when George III was King of England, and a young Corsican soldier of the name of Bonaparte was beginning to cut a figure in European history, when Ireland had a Parliament of its own, and Burke was launching his Philippic; long before the advent of the first locomotive or the first steam packet, but just when British trade was receiving a remarkable impetus, when its manufacturers were starting on the marvellous career of development that has since known no rest—the foundations of many commercial houses were laid deep and strong. Among them was one we know to-day as John Shaw and Sons, Wolverhampton, Limited."

"The Calcutta branch of the business was established in 1820 when the Marquess of Hastings was Governor-General. Mr. T. E. Thomson was the first representative of the firm in India. The offices, shops and works were at first in Old Court House Street, occupying a portion of the house on which the Great Eastern Hotel now stands. Mr. Thomson opened the India business, as authorised by the parent house, in his own name, and that name has attached to the branch ever since."

"In 1853/4 the business was removed from Old Court House Street to No. 15 (now No. 9), Esplanade, East, which are the premises at present in occupation."

Extract from "The Hardwareman," August 31, 1895.

Among the valuable representations of T. E. Thomson & Co., Ltd., is that of Messrs. CHUBB and SON'S LOCK and SAFE Co., Ltd., LONDON, whose business is Security, and whose advice in relation to

**SAFES, LOCKS, STRONG ROOMS, TREASURY DOORS,
GRILLES, SAFETY DEPOSIT VAULTS, etc., etc.,**

is based on experience of over a century.

We have enjoyed the patronage of the Ruling House and of the people of the State of Hyderabad for many years, and we trust to have the privilege of continuing to serve them.

Agents for CHUBB & SON'S LOCK & SAFE Co., Ltd.

T. E. THOMSON & Co., Ltd.,
(INCORPORATED IN ENGLAND)

ENGINEERS, FOUNDERS AND MERCHANTS,

9, Esplanade East, CALCUTTA.

Branches at - - BOMBAY and LAHORE.

*Printed by the Burlington Publishing Co.,
74-76, Temple Chambers, London, E.C.4.
Published by the Proprietors at the Offices,
133-136, High Holborn, London, W.C.1.*