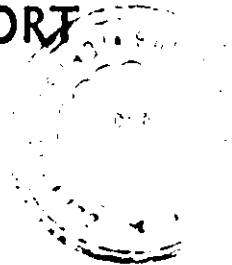




FIFTH ANNUAL REPORT

OF THE

South Carolina



State Planning Board

TO THE

General Assembly

OF THE

State of South Carolina

For the Fiscal Year 1941-1942



**PRINTED UNDER THE DIRECTION OF THE
JOINT COMMITTEE ON PRINTING
GENERAL ASSEMBLY OF SOUTH CAROLINA**

SOUTH CAROLINA STATE PLANNING BOARD

R. L. Sumwalt, ChairmanColumbia
H. E. Danner, Vice-ChairmanBeaufort
F. B. HinesHartsville
T. B. JonesSeneca
M. S. LewisChester
D. L. McLaurinMcColl
C. C. NortonSpartanburg
H. M. PaceCharleston
B. F. WymanColumbia

Office Staff

F. E. Lawrence
Director

R. M. Horton, Jr.
Senior Technician

Mrs. R. M. Littlejohn
Secretary

Consulting Staff

G. H. Aull
H. B. Bursley
R. C. Johnson

J. L. Moore
J. J. Petty
H. C. Weldon

LETTER OF TRANSMITTAL

Columbia, S. C.,
August 28, 1942.

*Governor Richard M. Jefferies and the General Assembly of
South Carolina, Columbia, S. C.*

Gentlemen:

I have the honor to transmit herewith the fifth annual report of the South Carolina State Planning Board for the fiscal year terminating June 30, 1942.

Respectfully submitted,

S. C. STATE PLANNING BOARD,

By Robert L. Sumwalt,
Chairman.

TABLE OF CONTENTS

	Page
I. WHAT THE PLANNING BOARD IS DOING	7
Staff	7
Planning Board Projects	8
Planning Board and National Resources Planning Board	9
Planning Board and Industrial Development Committee	10
Correspondents	11
Distribution of State Planning Board Reports	12
State Organization Chart	15
II. PLANNING BOARD PROJECTS FOR THE COMING YEAR 17	
Bulletin No. 11—The Growth and Distribution of Population in South Carolina	17
Bulletin No. 12—From Farm to Factory	17
County Industrial Bulletins	18
County Zoning and Planning	18
Pamphlet No. 8—Communities and Their Utilities	18
Pamphlet No. 9—Study of Industrial Tax Exemptions	18
Public Works Reserve	19
Proposed Immediate Industrial Development Program for South Carolina	19
Proposed Long Range Industrial Development Program for South Carolina	20
III. SUMMARY OF BULLETINS ISSUED BY THE STATE PLANNING BOARD DURING THE FISCAL YEAR 1941- 1942	23
Plastics from the Farms and Forests of South Carolina	23
An Opportunity for the Woolen and Worsted Industry in South Carolina	24
IV. SUMMARY OF ALL PAMPHLETS ISSUED BY THE STATE PLANNING BOARD TO DATE THROUGH THE FISCAL YEAR 1941-1942	28
A Cement Mill for South Carolina	28
A Chlorine Alkali Plant for South Carolina	28
Aluminum from Santee-Cooper Power	29
Location of a Tin Smelter Plant in South Carolina	29
National Defense—Army and Navy Procurement Offices	29
Sericulture in the United States	29
Idle Plant Capacity in South Carolina	30
V. COUNTY PLANNING AND ZONING ENABLING ACT	31
A Bill to Authorize County Planning, etc.	32
VI. FINANCIAL STATEMENT—FISCAL YEAR 1941-1942	40

LIST OF ILLUSTRATIONS

	Page
Fig. 1—Geographical Distribution of Persons on Mailing List By Counties	13
Fig. 2—Geographical Distribution of Persons on Mailing List By States	14
Fig. 3—State Organization Chart	16
Fig. 4—Location of Textile Establishments	25

CHAPTER I

WHAT THE PLANNING BOARD IS DOING

At the beginning of the fiscal year July 1st, 1941 to June 30th, 1942, although the appropriation for the work of the Board was only \$6,000.00 for the year, the Board enjoyed the active cooperation of the National Resources Planning Board which could furnish it with consultant services, and with the Industrial Development Committee of the State Defense Council which had funds to provide financial assistance. The staff of the Board could, therefore, be organized for industrial development work throughout the State and for active assistance in preparing information that would assist in converting the activities of the State to a war basis as rapidly as possible.

The staff maintained out of the appropriation of \$6,000.00 was, of course, very small and inadequate in itself for the work in hand. The appropriation was supplemented by \$1,000.00 obtained from the Civil Contingent Fund to provide for some consultation services on certain work that was under way but without the help of the National Resources Planning Board and the Industrial Development Committee it would have been impossible for the Planning Board to function with any degree of efficiency.

The Industrial Development Committee of the State Council of Defense agreed to pay the entire salary of the Director, at least for the first six months of the fiscal year until January 1st, and that was maintained actually until February 1, 1942. Also, the Industrial Development Committee furnished in part the funds to pay for a special industrial consultant who was engaged on investigations connected with industrial development.

As it worked out, the services provided by the several groups for the fiscal year were as follows:

State Funds

(Legislative appropriation and Civil Contingent Fund Allotment).

Administrative expenses (travel and per diem of Board members).

General office expenses (office supplies and equipment, telephone, etc.).

Publication of Bulletin 10.

Personal services:

- 4 Consultants, full-time, 1 month
- 1 Consultant, part-time, 2 months
- 1 Stenographer-clerk, full-time, 12 months
- 1 Senior Technician, full-time, 12 months

National Resources Planning Board

- 1 Consultant, full-time, 9 months
- 1 Consultant, 5 days per month, 6 months
- 1 Consultant, 2 days per month, 6 months

Industrial Development Committee, S. C. Council for National Defense

- Salary of Director, full-time, 7 months
- Publication of Bulletin 9

The amount of funds furnished in money or in services was as follows:

1. State Planning Board appropriation	\$7,000.00
2. National Resources Planning Board, consultant services	3,000.00
3. Industrial Development Committee, publication of reports, services of Director and Consultant	4,300.00
	<hr/>
Total	\$14,300.00

Planning Board Projects

A number of studies were made in the form of bulletins, pamphlets and reports with respect to projects that had been called for. Bulletin No. 9, "Plastics from the Farms and Forests of South Carolina", was completed and turned over to the printer; Bulletin No. 10, "An Opportunity for the Woolen and Worsted Industry in South Carolina," was completed and distributed; Bulletin No. 11, "The Growth and Distribution of Population in South Carolina", was carried forward by the author, Professor J. J. Petty, throughout the fiscal year. Its completion extends into the next fiscal year. A pamphlet was issued with regard to a study of silk raising with particular reference to possibilities in South Carolina, another pamphlet pertained to a complete roster of idle plants and warehouses within

the State that could be used for industrial sites or for war purposes, also Industrial Directory, Bulletin No. 5, was brought up to date and the section on lumber was entirely reclassified and revised to provide more complete information.

Bulletin No. 10, "An Opportunity for the Woolen and Worsted Industry in South Carolina", was published and distributed by the Planning Board out of limited funds that remained in the appropriation, supplemented by contributions from three outside sources which are interested in the development of industries in the State.

The Planning Board and the National Resources Planning Board

The headquarters office of Region 3 requested the Board to draw up written comprehensive reports which that office would use in a general report covering the six Southeastern States embracing Region No. 3 to be called "A Plan for Regional Development". Work was carried on throughout nine months of the fiscal year to complete these studies which were transmitted to the Atlanta office of the National Resources Planning Board and which are being incorporated in a series of reports now beginning to be issued by that office, and which will loom large in planning for the post-war period.

The principal work of collaboration was in working with the National Resources Planning Board and through its specially appointed consultants to assist in solving some of the problems in the congested areas of the State. A consultant was assigned to this work and located in the Charleston Area and spent most of his time working out detailed plans and data that finally resulted in a very complete report made by the National Resources Planning Board covering this area and in legislation enacted by the General Assembly authorizing the setting up of a County Planning and Zoning Enabling Act for the Charleston Area. A copy of the bill is outlined in full beginning on page 31 and a County Planning and Zoning Board has been appointed at Charleston which is working closely with the National Resources Board in Atlanta and this State Planning Board in Columbia. It is thought that this start in Charleston County will lead to similar planning and zoning boards in other counties of the State.

Appropriations for consultants furnished by the National Resources Planning Board were not renewed for this fiscal year and the prospects are that no consultant assistance will be forthcoming for the duration of the war.

The joint efforts of the National and State Planning Boards are therefore dormant in so far as actual field work is concerned and the cooperative work must be limited to an occasional office conference; work on reports based on data previously gathered; and advice where and when it can do some good as, for instance, the Charleston County Planning Board.

The Planning Board and the Industrial Development Committee of the State Defense Council

This cooperation was primarily on industrial development and the conversion of existing resources and facilities in the State to war requirements. The Director was paid entirely for the first seven months by the Industrial Development Committee and spent more than half his time in actual contacts with industries that the Industrial Committee was endeavoring to bring into the State and also working with the various communities throughout the State to assist them in lining up existing industries in order that they might remain in business and be made useful for the war effort.

An industrial chemical engineer was engaged entirely on this work making field investigations for specific projects such as that for a cement plant, aluminum, manganese and other metallurgical industries, shipbuilding enterprises, machine shop construction of parts for ships, etc.

The financial support of the Industrial Development Committee ceased as of February 1st in so far as staff assistance was concerned, and it was necessary, therefore, to curtail the development work by the Planning Board as of that date.

Because of lack of funds and withdrawal of financial support, it was necessary to dispense with the services of the Director from the latter part of February until the last half of July during which time the work of the Board was carried on by the remaining staff.

The Industrial Development Committee has, however, continued to publish the reports and bulletins of the Planning Board and the status of such work is as follows:

Published and Distributed:

- Bulletin No. 5—Industrial Directory of South Carolina
- Bulletin No. 6—County Taxes and Public Service in South Carolina
- Bulletin No. 7—Parks and Recreational Areas in South Carolina
- Bulletin No. 8—Building a New World with South Carolina Hardwoods, Plywoods, Plastics

Bulletins now in Press:

- Bulletin No. 9—Plastics from the Farms and Forests of South Carolina

The Planning Board is still dependent on the Industrial Development Committee for publishing its findings in bulletin form. If it were not for this continued assistance it would not be possible for the Planning Board to print and distribute the results of its investigations and studies.

Correspondents

The Planning Board has upon request furnished information or made studies or prepared material for many agencies and groups, among which may be mentioned:

- The Governor of the State
- The Junior U. S. Senator from South Carolina
- Members of the General Assembly
- Members of Congress at Washington
- National Resources Planning Board
- State Planning Boards of other States
- State Defense Council
- Charleston County Planning Board
- Charleston Industrial Bureau
- Charleston County Traffic and Rate Bureau
- U. S. Corps Area Command
- U. S. Department of Commerce
- Organized-Business, Inc.
- Chambers of Commerce and Boards of Trade
- South Carolina Magazines and Publications—Various
- National Economic and Planning Associations
- Many Manufacturers throughout the Country

Distributors—such as Sears, Roebuck
 Schools of the State and Nation
 Cities and towns of the State
 Seaboard Air Line Railway
 Southern Railway
 Atlantic Coast Line Railroad
 South Carolina Public Service Authority
 Various Departments of the State Government
 South Carolina State Ports Authority
 Etc., etc.

Distribution of State Planning Board Reports

One of the purposes set forth in the act creating the State Planning Board is "To give publicity to the purpose which it serves and to disseminate, by publication or otherwise, any information which in its judgment would promote the welfare of the State."

In accordance with this duty, the reports of the Board are distributed without cost to persons and agencies who request them. These reports have proven to be of great value to many persons and comments have been received from a large number of individuals and firms setting forth the ways in which they have been aided by the Board's publications.

As the fiscal year closed the Planning Board had on its regular mailing list 823 South Carolina individuals and firms. Also on its mailing list were approximately 200 individuals and firms in the other 47 States, the District of Columbia, Hawaii and Cuba. In addition to its regular mailing list requests are constantly being received for specific publications from all parts of South Carolina and the Nation.

In addition to reports which have been distributed by the Planning Board, the Industrial Development Committee of the State Defense Council, which published several of the Board's reports, gave wide distribution to some of the publications. For example, several thousand copies of Bulletin No. 8, entitled "Building a New World with South Carolina Hardwoods, Plywoods and Plastics", were sent to furniture, veneer and plywood manufacturers throughout the nation in an effort to acquaint them with South Carolina's resources in this new field.

There is shown in Figures 1 and 2 the distribution of those individuals, firms and agencies on the regular mailing list of the State Planning Board.

GEOGRAPHIC DISTRIBUTION OF PERSONS ON MAILING LIST
BY COUNTIES

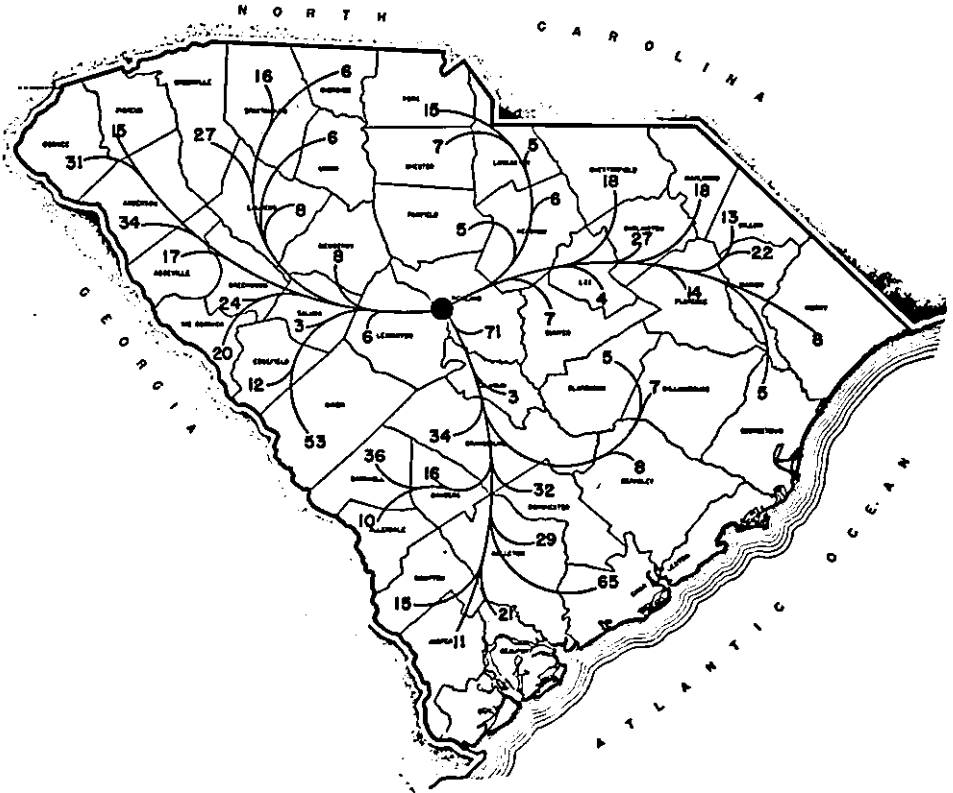


FIG. 1
SOUTH CAROLINA
STATE PLANNING BOARD



GEOGRAPHIC DISTRIBUTION OF PERSONS ON MAILING LIST BY STATES

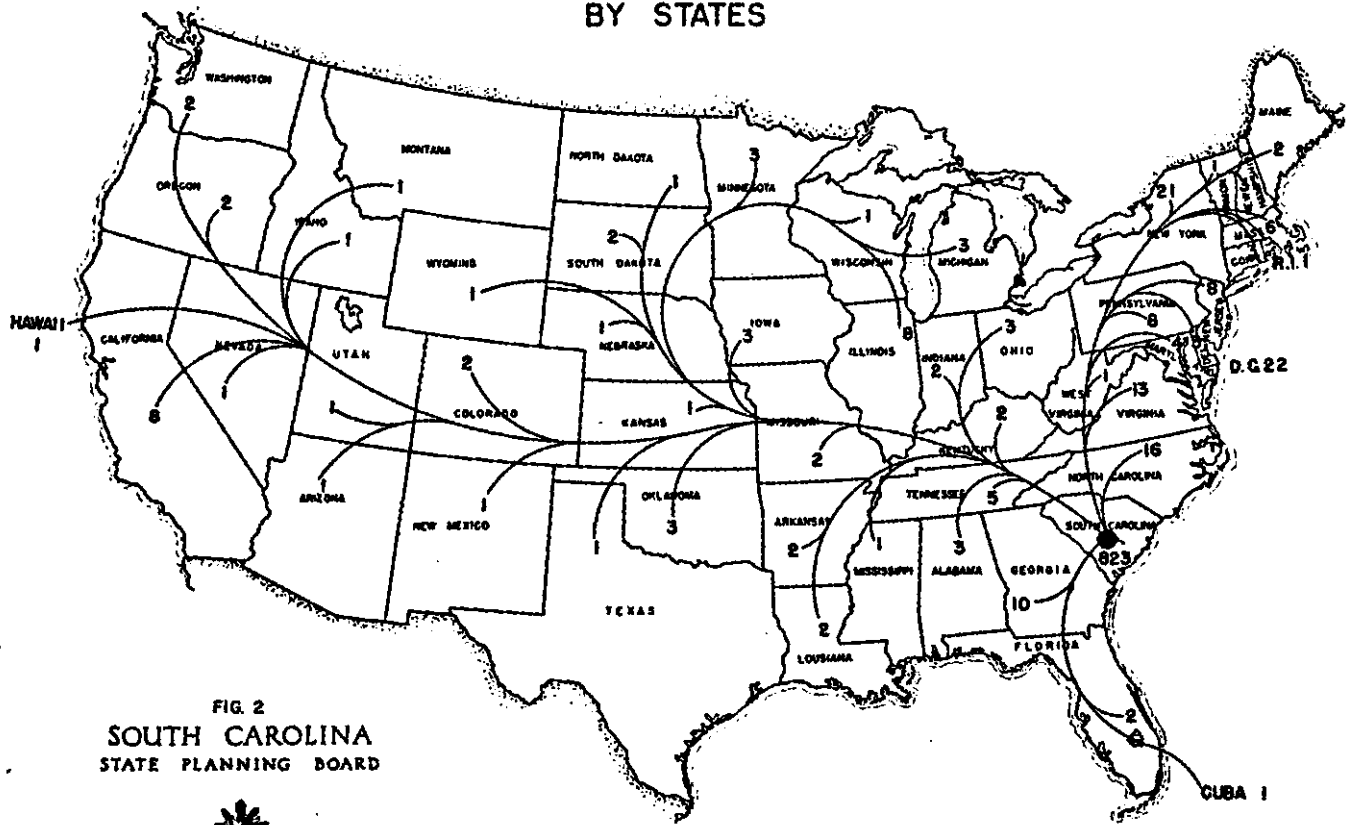


FIG. 2
SOUTH CAROLINA
STATE PLANNING BOARD



State Organization Chart

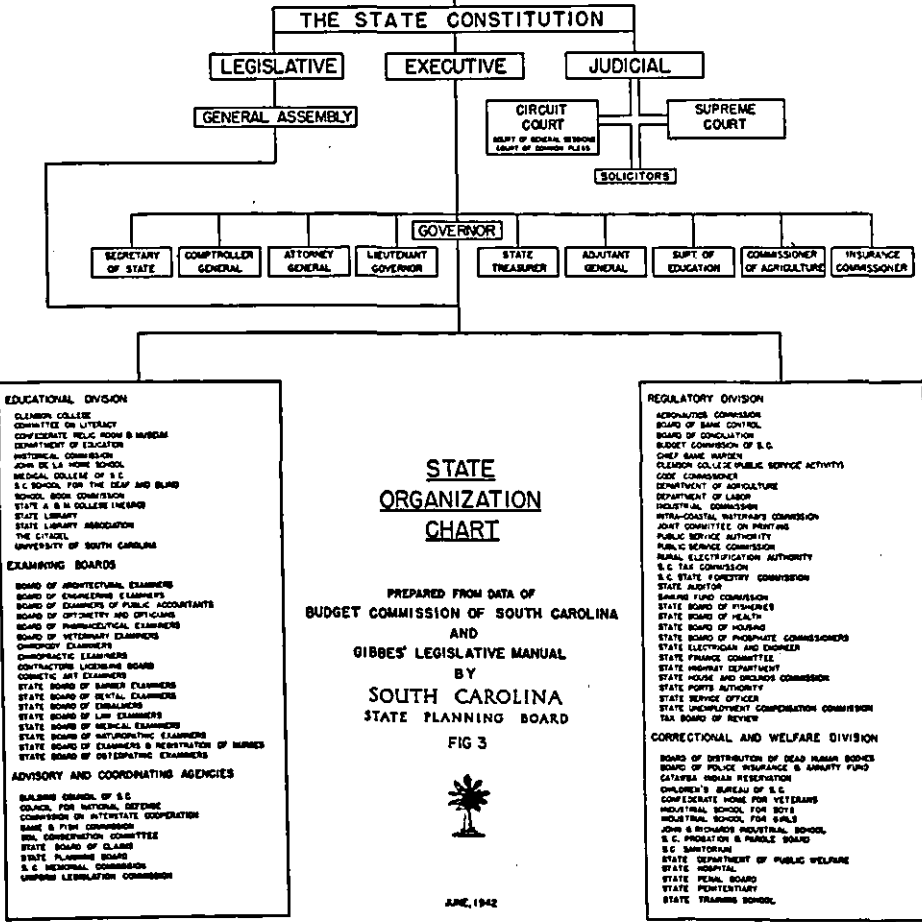
The Board has from time to time received requests for a complete set-up of the State Government, listing all branches, divisions, commissions, boards, bureaus, and other State agencies. Whenever information of this nature is needed the Planning Board is expected to have the answer.

The State Organization Chart, shown on page 16, has been made up from the latest information taken largely from the records of the Budget Commission and from Gibbes' Legislative Manual. The chart was completed in June 1942 and represents the status as of that date.

The grouping is functional and each subdivision has been placed in accordance with the type of its duties and authority. They are:

- Regulatory Division
- Correctional and Welfare Division
- Educational Division
- Examining Boards
- Advisory and Coordinating Agencies

THE PEOPLE OF SOUTH CAROLINA



CHAPTER II

PLANNING BOARD PROJECTS FOR THE COMING
YEAR

During the next fiscal year the State Planning Board does not, as it did during the last fiscal year, have the financial help or technical assistance from either the National Resources Planning Board or the Industrial Development Committee of the State Defense Council. It is, however, cooperating with these two agencies, the one national and the other State, and it is furnishing to both all assistance possible within the very limited scope of the means at its disposal.

During the last fiscal year two or more consultants were placed at the disposal of the State Planning Board by the National Resources Planning Board and the entire salary of the Director was paid by the Industrial Development Committee for the first seven months of that year and, in addition, an industrial consultant was carried by it.

This is no longer the case and during the present fiscal year it is necessary to restrict the employment of the Director to a part time basis only.

Although conditions have materially changed from the past fiscal year, the State Planning Board is endeavoring to carry out a program that will be of maximum service in the present war effort and which will also prepare for post-war problems.

Projects which are now under way and listed for completion during the present fiscal year are as follows:

1. *Bulletin No. 11, "The Growth and Distribution of Population in South Carolina"*, is a comprehensive treatise dealing with the people of the State from the time when the State was first settled to the present time. It is in the hands of the printers and as soon as completed will be widely distributed throughout the State and the country as a whole. It will do much to advertise the State.

2. *Bulletin No. 12, "From Farm to Factory"*. At this time the subject of dehydration is being pressed throughout this State and all other truck growing sections because of the tremendous demand by the armed forces for a greater supply of dehydrated foods. Meetings have been held in the State and two large plants

are preparing for operation and are calling on us for information. This study was made to bring together pertinent information and many requests are being received for copies. Arrangements have been made with the Industrial Development Committee of the State Defense Council to print it for the Planning Board and it will be rushed through the press with all expedition.

3. *County Industrial Bulletins.* Economic surveys are being made of each of the counties of the State. Richland and Greenville counties are practically complete and will be released in mimeographed form. Information on many of the counties is required by the armed services and this office has been called on from time to time to assist in compiling information such as camp sites, available buildings for use by troops, etc., etc. This series will be continued until all of the counties of the State have been covered.

4. *County Zoning and Planning.* During the past year a consultant was assigned by the National Resources Planning Board to this State Planning Board for the express purpose of assisting and working out the problems in the congested areas brought about by war activities. The work was concentrated in Charleston County and as a result a County Planning Enabling Act was passed by the last General Assembly which authorizes such county planning and a County Planning and Zoning Board has been set up in Charleston County which is working with the National Resources Planning Board in Atlanta and with this Board in Columbia in marking out the methods for other counties of the State to follow when the benefits of such zoning and planning have become manifest.

5. *Pamphlet No. 8, "Communities and Their Utilities".* A mimeographed pamphlet is being prepared which will list all incorporated places in the State and also in another arrangement, all of the towns, naming the highways, railways, utilities and telephone companies in each. This information is called for regularly and is needed. The pamphlet will be a distinct service.

6. *Pamphlet No. 9, "Study of Industrial Tax Exemptions".* An attempt has been made to compile information from the va-

rious counties and from adjoining States and also from industries as to the efficacy of industrial tax exemptions by counties. This information will be collected and presented in Pamphlet No. 9.

7. *Public Works Reserve.* This federal agency was deprived of additional funds a short time ago and the work that has been done in this State in the form of planning for the post-war period, and work that could be carried on by the various departments of the State, had either to be lost or turned over to some agency such as the State Planning Board for collection and maintenance of records. The Planning Board is, therefore, completing this work in the form of summaries of needed projects totaling \$23,000,000.00, all of which will be ready for presentation when the emergency arises.

8. The Board has made plans to prepare and distribute to the press of the State articles concerning agriculture, industry, economics, resources, and other subjects that are under study by the State Planning Board and to release this information in the form that will be most effective to distribute facts and figures as they are compiled by the staff of the Board.

9. Cooperation is being maintained with the Industrial Development Committee to assist in keeping as many of the small industries of the State at work as possible and to convert some of them to supplying materials that are needed in the war effort.

Proposed Industrial Development Program—as a Basis for Planning Board Studies

An industrial development program has been adopted by the Board looking:

1. To the immediate war program, and
2. Covering the longer range.

All effort must be concentrated until this war is won on means to assist the government in every possible way. In addition to the program that is now being carried out and listed under the nine points heretofore described, the following program has been adopted by the Board as its official aim for the period ahead.

1. *Immediate Industrial Development Program for South Carolina.*

The work that can be done on the various items as outlined will depend upon funds available and the cooperating agencies that can be enlisted for work.

	Cooperating Agency	Cooperating Group	Estimated Cost
I. NATURAL RESOURCES			
A. Investigation of minerals which are strategically important in time of war.	U. S. Geological Survey Industrial Development Committee	Geologist	\$5,000-\$10,000 for each investigation, including publication.
1. Copper,			
2. Tin			
3. Iron			
4. Manganese			
5. Mica			
6. Others			
II. AGRICULTURAL RESOURCES			
A. Expansion of Farm Industries	U. S. Dept. of Agric. S. C. Dept. of Agric. State Agric. College U. S. Dept. of Com.	Food Chemist Agriculturist Engineer	\$1,000-\$2,000 per study, including publication.
1. Meatpacking			
2. Dehydration plants			
3. Creameries			
4. Nitrate Mfg. Plant			
5. Cold Storage and Quick-Freezing Plants			
6. Canneries			
7. Other			
III. INDUSTRIAL RESOURCES			
A. Complete survey of idle plant and plant sites.	Railroads Chambers of Commerce	Engineers	\$2,500
B. Industrial Prospecting of present plants which can be converted to wartime needs.	National Resources Planning Board Industrial Locations Section U. S. Dept. of Com.		\$1,000-\$2,000 per study
1. Automobile repair shops			
2. Machine shops and foundries			
3. Woodworking shops			
4. Others			

2. *Long Range Industrial Development Program for South Carolina.*

It is realized that the program as outlined is all comprehensive and that a great deal of time, money and effort must be expended to complete it. However, with its accomplishment the first steps will have been taken to adequately employ the resources, natural and otherwise, of the State to advance it materially in wealth and prosperity. About the first thing that must be done if

we are to know our State is to make a geological study. From that will naturally follow the other steps as outlined.

I. NATURAL RESOURCES

- | | |
|---|--|
| | Cooperating Agencies |
| A. Complete county by county geological survey of the State, including: | U. S. Geological Survey
U. S. Bureau of Mines
Fed. Power Commission
Affected State Agencies |
| 1. Water and Power Resources | |
| a. Chemical Analysis of Water | |
| b. Continuous Operation of stream gaging stations | |
| 2. Mineral Resources | |
| a. Minerals which can be mined economically in time of war or peace | |
| (1) Gold, granite, phosphate, etc. | |
| b. Minerals which are strategically important in time of war | |
| (1) Copper, tin, iron, manganese, mica, etc. | |
| 3. Sub-strata investigations for totally unknown mineral deposits. | |
| B. Completion of Mapping Program and publication of results | U. S. Geological Survey
Coast and Geodetic Survey
War Department |
| C. County by county survey of Forest Resources | U. S. Dept. of Agriculture
S. C. Forestry Commission |

II. AGRICULTURAL RESOURCES

- | | |
|---|--|
| A. Complete county by county soil surveys | U. S. Dept. of Agriculture
S. C. Dept. of Agriculture
Clemson College Experiment Station |
| 1. Determination of the best use of the soil in each locality | |
| a. Diversification of Agriculture | |
| B. Livestock and Poultry possibilities on the S. C. Farm | |
| C. Farm Chemistry | National Farm Chemurgic Council
U. S. Dept. of Agriculture |
| 1. New uses for present crops | |
| a. Vegetable oils | |
| b. Starch—potatoes | |
| c. Cellulose products | |
| d. Tobacco processing | |
| 2. Uses for present farm wastes | |
| 3. New cash crops | |
| a. Soybeans | |
| b. Medicinal plants | |
| c. New oil plants | |
| d. Others | |
| D. Expansion of farm industries | |
| 1. Meatpacking | |
| 2. Dehydration plants | |
| 3. Creameries | |
| 4. Nitrate manufacturing plant | |
| 5. Cold storage and quick freezing plants | |
| 6. Canneries | |
| 7. Others | |

III. INDUSTRIAL RESOURCES

- | | |
|---|---|
| A. Complete survey of idle plant and plant sites (Pamphlet 7 expanded) | Railroads, Chambers of Commerce, etc. |
| 1. Photographs, description and possible use | |
| B. Complete survey of the requirements of various manufacturing industries | National Asso. Manufacturers |
| C. Industrial studies of industries whose requirements are met by S. C.'s resources | Federal and State Agencies
Trade Associations, etc |

III. INDUSTRIAL RESOURCES (Continued)

Cooperating Agencies

- | | |
|---|--|
| <ol style="list-style-type: none"> 1. Wartime processes which can be converted to meet peacetime needs <ol style="list-style-type: none"> a. Plywoods b. Plastics c. Others 2. Wartime processes which meet peacetime needs <ol style="list-style-type: none"> a. Additional textile units--woolens, etc. b. Various acids c. Paper and pulp d. Naval stores utilization e. Synthetic rubber plant f. Refractories g. Others 3. Wartime plants with little or no peacetime value <ol style="list-style-type: none"> a. Ordnance plants b. Shipbuilding c. Gas (Poison) d. Others 4. Post-war plants to meet the effect of war plant demobilization <ol style="list-style-type: none"> a. Alcoholic beverages b. Batteries c. Cigarettes and cigars d. Furniture e. Animal feeds f. Soap manufacture g. Glass products h. Paints i. Wood products j. Woolens and worsteds k. Machine manufacture l. Others 5. Present plants which can be converted to wartime needs <ol style="list-style-type: none"> a. Automobile repair shops b. Machine shops and foundries c. Woodworking shops d. Others | <p>National Resources Planning Board, Industrial Locations Section</p> |
|---|--|

IV. OTHER FACTORS AFFECTING INDUSTRIAL DEVELOPMENT

- | | |
|--|---|
| <ol style="list-style-type: none"> A. Transportation <ol style="list-style-type: none"> 1. Effects of transportation facilities on location of industries B. Labor <ol style="list-style-type: none"> 1. Labor laws and their effect on industry 2. Methods of increasing the supply of skilled labor 3. Utilization of labor--skilled, semi-skilled and unskilled that is no longer needed in war industries C. Power and Fuel D. Water <ol style="list-style-type: none"> 1. Water supply 2. Water power 3. Drainage 4. Sewage and pollution 5. Other E. Other Factors <ol style="list-style-type: none"> 1. Schools 2. Hospitals 3. Housing 4. Taxes 5. Health 6. Welfare | <p>State and Federal Agencies
National Resources Planning Board
U. S. Labor Department
State Labor Department

U. S. Geological Survey
National Resources Planning Board

National and State Agencies concerned</p> |
|--|---|

CHAPTER III

SUMMARY OF BULLETINS ISSUED BY THE STATE
PLANNING BOARD DURING THE FISCAL YEAR
1941-1942*Bulletin No. 9, "Plastics from the Farms and Forests of South Carolina"*

During the past several years plastic products have "come into their own". Every year many new forms of plastics are discovered which can be used for substitutes of various metals and other scarce materials. These plastic products are often much more desirable than the substance which they replace and are frequently cheaper and easier to handle.

Although there are hundreds of types of plastics, almost without exception they are derived from one of two sources: (a) Cellulose base; (b) Petroleum base. Those plastic products which have a cellulose base are of interest to South Carolina. Cellulose plastics may be produced from wood pulp, soybeans, saw dust, waste forest products, cotton, cotton stalks, or any other product containing cellulose.

The plastics industry is expanding by leaps and bounds throughout the Nation. At the present time South Carolina has only one plant in the group and this plant is engaged in the manufacture of finished plastic products from a plastic base manufactured elsewhere. Plants of this type can be started with a very small capital outlay. They buy their plastic in semi-finished form and can manufacture, through the use of molds, any variety or shape product.

South Carolina has the raw material in abundance for the complete process of manufacture of plastic products. A familiar sight along any road in the State is a tremendous saw dust pile, the result of previous timber operations. These piles are burned or left to be weathered away. They might well supply the basic material for the manufacture of the semi-finished plastic material. Another source of plastic material in the State can be found in the swamps of the Coastal Plain. The present forest practice of the State is to go into a timber area, cut the trees which are suitable for lumber products, and leave the scrub growth standing. This process is not in line with the best forest practices. The correct procedure would be to go in and thin out the

scrub growth in order that the usable trees might develop better. This scrub growth could be utilized in the manufacture of ligni cellulose plastics.

At present there is much talk about the need for diversification of agriculture in the State. The soybean which is rich in cellulose is one of the main bases for plastics. The establishment of a plastics plant in the State would give the farmers of South Carolina an opportunity to produce and dispose of a large annual soybean harvest, a cash crop which is now produced in very small amount in the State. During the present crisis when there is a shortage of all metals, plastics are becoming increasingly important as a substitute for critical materials. They can be used to replace metals in almost any type of product, including adding machines, jewelry, cutlery, office equipment, and many others too numerous to name. After the present crisis has passed, many articles for which plastics have been used will continue to be made of that material due to the fact that it has proven to be just as serviceable and in many cases has made a better product. The plastics industry is now in its beginning. South Carolina might well become one of the leading States in this new and growing manufacturing process.

Bulletin No. 10, "An Opportunity for the Woolen and Worsted Industry in South Carolina"

During the last forty years the South has become the center of cotton textile production in the United States. The first move of the cotton industry to Southern locations was ridiculed and pronounced as doomed to failure. The cotton industry has survived its move South, has not only survived but has grown and prospered. During the past few years South Carolina has been one of the leading States in the manufacturing of cotton goods and has usually appeared at the top of the list in spindle hours per month in the Nation.

Another very important branch of the textile industry is the manufacture of woolen and worsted goods. In this branch the South has done very little. There have always been a few scattered mills in the South but they have accounted for only a minute part of the total value of woolen and worsted products. During the past few years, however, the industry has looked towards the South and its potential advantages as the location

LOCATION OF TEXTILE ESTABLISHMENTS

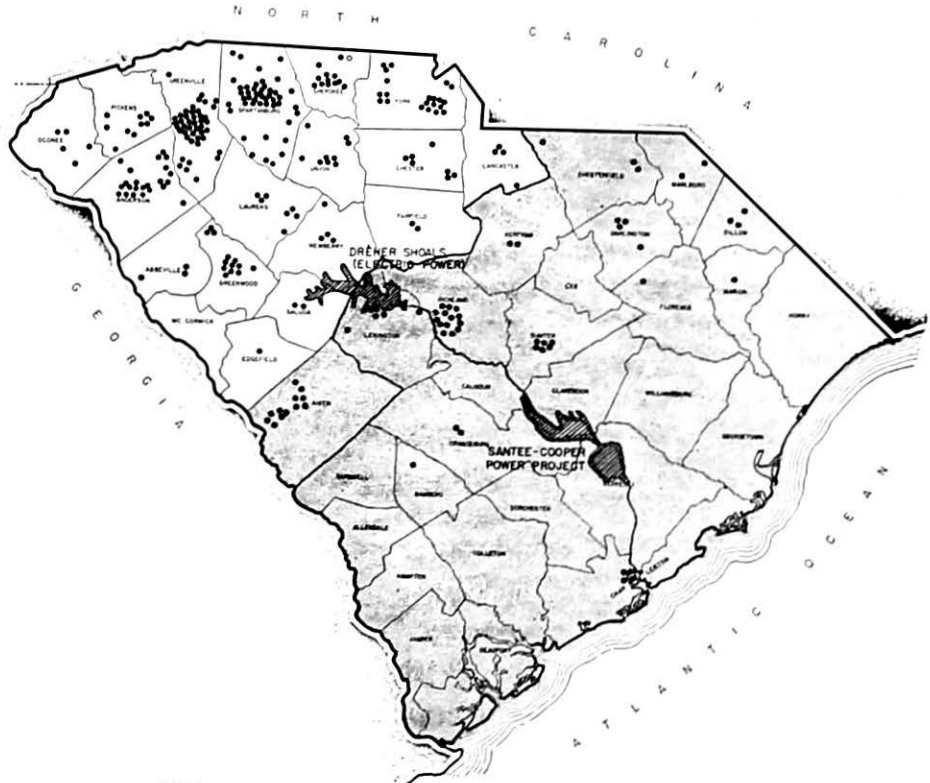



FIG. 4

SOUTH CAROLINA
STATE PLANNING BOARD



EACH DOT REPRESENTS ONE ESTABLISHMENT
LOCATIONS SHOWN ARE APPROXIMATE

 AREA RECOMMENDED FOR WOOLEN & WORSTED ESTABLISHMENTS



of woolen and worsted mills. A few mills have been established in the South, one in South Carolina, recently. With modern equipment and almost ideal working conditions, plants in this area will not only find it possible to produce goods at lower costs but they will be better able to meet the competition of post-war years. Observers of manufacturing trends have predicted a general development of the woolen and worsted industry in the South during the next decade or so.

Although there is some relation between the woolen and the cotton industries, for the most part they must not be thought of in the same terms. Workers cannot be interchanged; that is, a cotton mill worker is not desirable as a woolen mill employee or *vice versa*. However, the basic economic and industrial factors which brought about the development of the cotton textile manufacturing industry can be well considered by the woolen industry. Among these factors are labor costs, construction costs, raw material costs, etc.

It is suggested that manufacturers of woolen and worsted goods consider the Coastal Plain region of this State as prospective locations for their mills. In this area there is a large supply of labor which could be trained and which is not already employed in cotton textiles. The Santee-Cooper Power Project has made possible very attractive power rates. The climate is mild and snow is a rare occurrence. The location near the navigable Santee-Cooper waterways and the coast will allow the manufacturer cheaper shipping rates and the counties located in that region, with but few exceptions, are relatively undeveloped industrially and in need of permanent manufacturing establishments. The section also has very good transportation facilities—paved highways, railroads and shipping facilities from three ports. There are very few cotton textile mills.

It is realized that present conditions make it impossible for an industrial plant of any kind to make a move. The scarcity of building material, laborers for construction work, new material, threatened shortage of wool, etc., even aside from War Board prohibitions, all contribute towards making a present move impossible. It should be noted, however, that the mills which have moved to Southern States have found cheaper operating costs. After the present emergency is over competition in all fields will be keen. The manufacturer must meet this

competition or quit. The woolen and worsted manufacturers are urged to consider this State as a prospective site for the establishment of branch plants or as a location for new plants of the most modern type. Here they will find many economic and production advantages, the very factors which will help them meet the coming competition.

South Carolina is located as close to the source of raw wool as is the present center of the woolen and worsted manufacturing group. The main sources of raw wool are Australia, Argentina, the Union of South Africa, and our western states. South Carolina might easily become a center of this important textile branch as it did with cotton textiles.

CHAPTER IV

SUMMARY OF ALL PAMPHLETS ISSUED BY THE
STATE PLANNING BOARD TO DATE THROUGH
THE FISCAL YEAR 1941-1942

From time to time, initiatory studies are made by the State Planning Board on specific possibilities or needs. These studies may not be sufficiently comprehensive to warrant a bulletin and they are then issued as pamphlets. These are generally not sent out to the entire mailing list but are distributed only to those who may be interested in the particular subject. A summary of all such pamphlets issued by the State Planning Board to date is given below.

*Pamphlet No. 1, "A Cement Mill for South Carolina"**—issued 1940-1941:

This is a study of the advantages of a cement mill which could be located in the coastal plain region of South Carolina. It is based upon the presence of raw material, power, markets and a favorable freight situation. Its naturally protected territory would include the State of South Carolina, the coastal strip of Georgia and about one-third of North Carolina and in that area it would have economic advantages over mills outside the territory which now supply the needs for cement in this State. The study is made for a mill of 2,000 bbls. per day production (See page 45—Fourth Annual Report).

*Pamphlet No. 2, "A Chlorine Alkali Plant For South Carolina"**—issued 1940-1941:

This is the result of a survey and study, firstly of the definite market possibilities in this area of a plant to be located in the area, and secondly, to take advantage of the new hydro-electric power generated by the Santee-Cooper development. The coastal section contains the markets for both chlorine and alkali and the facts concerning the operating cost and features of a plant located in the area are set forth in the report.

*Can be found in Bulletin No. 4, "Manufactured and Agricultural Resources of South Carolina".

Pamphlet No. 3, "Aluminum From Santee-Cooper Power"—
issued 1940-1941:*

With the advent of Santee-Cooper hydro-electric power, a study was in order to determine the feasibility of locating an aluminum plant at Tidewater to take advantage of cheap power, ocean transportation for bringing in raw material and a strategic location for distribution of the product. This study was started at the time when shortages in the supply of aluminum were first noted and when efforts were being made to increase them. The advantages and the facts concerning operating cost are set out in this examination.

Pamphlet No. 4, "Location Of A Tin Smelter Plant In South Carolina"—issued 1940-1941:

At the time when the question of the location of a tin smelter plant to be built under the auspices of the Government was under consideration this study was made in the interest of locating such a tin smelter plant on the coast at Charleston. This pamphlet was compiled in two parts, the first "Notes on Tin Smelting" which discusses production costs, strategic location, etc. The second part entitled "Location of a Tin Smelter Plant in South Carolina", deals with considerations as to a definite plant location at Charleston, assuming that a decision had been made to locate a plant in this area.

Pamphlet No. 5, "National Defense—Army and Navy Procurement Offices"—issued 1940-1941:

During the early stages of the war effort this summary of the Procurement Offices of the Military Service was made up to provide for suppliers information concerning materials used by each branch of the Service and where contacts should be made. Swift changes in the procurement of military supplies has rendered this pamphlet now obsolete.

Pamphlet No. 6, "Sericulture In The United States"—issued 1941-1942:

This pamphlet was compiled at the request of the S. C. Council for National Defense. It was desired to determine the ad-

*Can be found in Bulletin No. 4, "Manufactured and Agricultural Resources of South Carolina".

vantages, if any, that existed in South Carolina for silk culture and came about as a result of the embargo that was placed upon importations of silk from Japan. It was found that silk culture would not be practicable or profitable in South Carolina. Repeated attempts have been made to cultivate the silk cocoon in various parts of the country but none have been successful.

Pamphlet No. 7, "Idle Plant Capacity In South Carolina"—
issued 1940-1941—revised 1941-1942:

A survey of idle plants was made for the State Defense Council during the early stages of the war emergency. This study was designed to locate throughout the State such buildings, plants, etc. that were not in use and which could be adapted to war industries or other uses. This pamphlet sets out pertinent information concerning the location of such available buildings or sites, giving description, owner, utilities, shipping facilities and as much other information as could be obtained concerning each site.

CHAPTER V

COUNTY PLANNING AND ZONING ENABLING ACT

During the past year the National Resources Planning Board assigned a consultant to the State Planning Board for the purpose of formulating a plan for relieving congestion in areas that have been affected by the Defense and War Programs of our nation. These areas include at present Beaufort, Camden, Charleston, Columbia, Greenville, Myrtle Beach, Spartanburg and Sumter.

The consultant has spent a large part of his time in the Charleston area as that area is confronted with the most difficult problems in the State at the present time. Unlike the other areas of the State, the large influx to Charleston has been, for the most part, civilians. This results in much greater problems than those imposed by segregated military reservations for large forces of troops. As a result of the coordinated efforts of all concerned the 1942 session of the State Legislature passed the first county-wide planning and zoning enabling act in this State. This act applies to counties in the State which contain a city of 70,000 population or more according to the Official United States Census, which limits its scope to Charleston County for the present. The purpose of the act, which is set forth in full below is to regulate the use of land and other facilities and to bring about the wise use of all resources. It provides for a county planning board and also permits planning boards of several counties to merge, thus forming a regional planning board.

This act is the beginning of county planning in South Carolina. The State is far behind many others in this important phase of the most effective use of its facilities. The act might well be used by the other counties of the State. Through the formation of active county planning boards the counties of our State can go far toward improving conditions as they exist in South Carolina today.

A Bill to Authorize County Planning in all Counties in this State Containing a City Having a Population of more than 70,000 According to the Official United States Census, to Provide the Procedure Therefor, and to Prescribe Penalties for Violations of Regulations Promulgated Under the Authority of this Act.

Be it enacted by the General Assembly of the State of South Carolina :

Section 1. This Act shall be known and may be cited as "The County Planning Act", and shall be effective in all counties in this State containing a city having a population of more than 70,000 according to the official United States census.

Section 2. In addition to all other powers delegated to it, the County Board of Commissioners of each county in which this Act shall become effective is hereby authorized and empowered to make, adopt, promulgate, and from time to time, amend, extend, and add to regulations effective in the unincorporated portions of the county restricting height, number of stories, and size of buildings and other structures, the percentage of lot that may be occupied, the size of yards, courts and other open space, the density of population, the location and use of buildings and other structures, and the use, conditions of use, or occupancy of land for trade, industry, residence, recreation, transportation, agriculture, grazing, soil and water conservation, forestry, flood control or other purposes; to provide for county planning; to provide for the regulation of subdivision of land; and to establish set-back lines for buildings and structures along the streets and roads.

Section 3. In each such county, the County Board of Commissioners is hereby given power and authority to divide the unincorporated portions of the county into districts of such number, shape, and area as may be deemed best suited to carry out the purposes of this act; and within such districts they may regulate and restrict the erection, construction, reconstruction, alteration, repair or use of buildings and structures, and the use, conditions of use or occupancy of land; and in that case may adopt official zoning regulations including a map or maps, indicating the districts, but the regulations in one district may differ from those in other districts.

Section 4. Such regulations shall be made in accordance with a comprehensive plan and designed for the purposes, among others, of lessening congestion in the roads and streets; protecting the development of both urban and non-urban area; securing safety from fire, flood, erosion, and other dangers; providing adequate light and air; promoting the health and general welfare, encouraging such distribution of population and such classification of land uses and distribution of land development and utilization as will tend to facilitate economic and adequate provisions for transportation, communications, roads, airports, water supply, drainage, sanitation, education, recreation or other public requirements; conserving and developing the natural resources; fostering the State's agricultural and other industries; protecting the food supply. Such regulations shall be made with reasonable consideration, among others, to the character of the districts and their peculiar suitability for particular uses; and to the minimum and maximum amounts of land required for particular uses, and with a general view to

promoting desirable living conditions and the sustained stability of neighborhoods, protecting property against blight and depreciation, securing economy in governmental expenditures, and encouraging the most appropriate use and manner of land in the county.

Section 5. In each such county, the County Board of Commissioners is hereby given power and authority to appoint a board of five members known as the County Planning Board.

Any individual whether in private or ex officio capacity may be appointed to serve on such board and the majority of the members thereof shall be individuals who do not hold elective office. The terms of ex officia members shall correspond to their tenures in office. The term of each appointed member shall be four years, except that the respective terms of three of the members first appointed shall be one, two and three years.

If the said County Board of Commissioners so desire, they may, instead of appointing a planning board for the county, form a regional planning board in conjunction with the governing authorities of another county or counties and thereupon may delegate to such regional planning board any or all of the powers and duties which under the terms of this Act are conferred on the County Planning Board.

They may provide for reimbursement of the members of the planning board for actual expenses incurred and shall provide for the filling of vacancies in the membership of such board, and for the removal of any member for cause, on written charges, after a public hearing.

Section 6. Said County Board of Commissioners may employ the services of a competent engineer or expert in county planning and zoning and such other employees as are necessary. All State officials, Departments and Agencies having information, maps and data pertinent for county zoning and planning are hereby authorized and directed to make such available for the use of the Planning Board as well as furnish such technical assistance and advice as they may have available for the purposes.

Section 7. The said Planning Board shall have the authority to cooperate with the Planning and Zoning Boards of other counties, cities, villages, or other municipalities, either within or without such county, and with municipal and State authorities, with a view to coordinating and integrating the planning and zoning program and to appoint such committees and adopt such rules as may be thought proper to effect such cooperation.

Section 8. The Council or other chief legislative body of any municipality located in whole or in part within the limits of the county may designate such County Planning Board as the official planning board of said municipality and in the event of such designation and acceptance thereof by the County Planning Board and the County Board of Commissioners, the County Planning Board shall have all the powers and duties provided by law for the municipal planning board in said municipality or municipalities; and in the event no legislation has been enacted for the establishment of a planning board and defining its powers in any municipality, the powers and duties outlined in this Act shall be of force.

Section 9. The County Planning Board shall make for certification to the County Board of Commissioners a zoning plan, or plans, including both

the full text of the zoning regulations, and the maps representing the recommendations of the board for the regulation by districts or zones of the location, height, bulk and size of buildings and other structures, percentage of lot which may be occupied, size of lots, courts and other open spaces, the density and distribution of population, the location and use of buildings and structures for trade, industry, residence, recreation, public activities, or other purposes and the use of land for trade, industry, recreation, agriculture, forestry, soil conservation, water supply conservation, or other purposes.

When the efforts of such board shall have reached the stage of the tentative plans, the board shall hold at least one public hearing on each tentative plan separately submitted, notice of which hearing shall be given by publishing notice thereof in a daily newspaper in the county at least fifteen days before the date of the hearing. The notice shall contain the time and place of hearing, and shall specify the place and time at which the tentative texts and maps of the Zoning Regulations may be examined. For the purpose of its public hearing or hearings the Board shall have the power to summon witnesses, administer oaths and compel the giving of testimony. In the event that after such public hearing or hearings the planning board, in the light of the development at such hearing or hearings makes changes in its tentative plan no further hearings shall be required.

Section 10. After receiving the certification of a zoning plan for the Planning Board and before the promulgation of any zoning regulations, the County Board of Commissioners shall hold a public hearing thereon, of which notice once a week, for at least two weeks in advance, shall be given in a daily newspaper in the county. Such notice shall state the place at which the text and maps as certified by the Planning Board may be examined. No change in or departure from the text or maps, as certified by the Planning Board, shall be made unless such change or departure shall first be submitted to the Planning Board for its approval or suggestions. The Planning Board shall have thirty days from and after such submission within which to send its report to the County Board of Commissioners, provided, however, that no approval, disapproval or suggestion of the Planning Board shall have more than advisory effect or shall in any wise bind the County Board of Commissioners.

Section 11. The County Board of Commissioners, may from time to time, amend the number, shape, boundary or area of any district or districts, or any regulation of, or within such district or districts, or any other provisions of any zoning regulations, but no such amendment shall be made or become effective until the same shall have been proposed by or be first submitted for approval, disapproval or suggestions to the Planning Board. Any proposal, approval, disapproval or suggestions of the Planning Board shall have advisory effect only and not be binding on the County Board of Commissioners, and, unless such Planning Board shall have transmitted its report upon the proposed amendment within thirty days after the submission thereof to it, the County Board of Commissioners shall be free to proceed to the adoption of the amendment without further awaiting the receipt of the report of the Planning Board. Before finally adopting any

such amendment, the County Board of Commissioners shall hold a public hearing thereon, notice of which shall be given in at least two weekly publications in a daily newspaper in the county.

Section 12. The County Board of Commissioners shall provide for a Board of Adjustment of three or five members and for the manner of appointment thereof.

The said County Board of Commissioners shall fix the terms of the members of such board, which term shall be of sufficient length and so arranged that the term of not more than one member shall expire each year. The said County Board of Commissioners may remove any member for cause on written charges after a public hearing. Any vacancy shall be filled by the County Board of Commissioners for the unexpired term. The County Board of Commissioners may appoint associate members of such board and in the event that any member be temporarily unable to act, due to absence from the county, illness, interest in a case before the board, or any other cause, his place may be taken during such temporary absence or disability by any associate member designated for the member.

The County Board of Commissioners may specify and provide general rules to govern the organization, procedure and jurisdiction of such Board of Adjusters, which rules shall not be inconsistent with the provisions of this Act; and the Board of Adjustment may adopt supplemental rules of procedure, not inconsistent with this Act or such general rules. The Board shall elect one of its number as chairman and shall appoint a secretary. The secretary may be an employee of the county. Meetings of the Board shall be held at the call of the chairman and at such other times as the Board may determine. The members of such Board shall have the power to summon witnesses, administer oaths and compel the giving of testimony. All meetings of the Board shall be open to the public. The Board shall keep minutes of its proceedings, showing the vote of each member upon each question or, if absent or failing to vote, indicating such fact, and shall keep records of its examinations and other official actions, all of which shall immediately be filed in the office of the Board and shall be a public record.

Appeals to the Board of Adjustment may be taken by any officer, department, board or bureau of the county and also by any person or persons having a substantial interest in any decision of an administrative officer or agency seeking to function under authority of or enforce any ordinance enacted pursuant to this Act. Such appeals shall be taken as provided by the rules of the Board of Adjustment and shall be evidenced by filing with the Secretary a written notice of appeal specifying the grounds thereof, and what modification of its decision is sought. The officer or agency from whose decision the appeal is taken shall forthwith transmit to the secretary of the Board of Adjustment all documents pertinent to the decision appealed from. The filings of such appeal shall stay all proceedings in furtherance of the actions or decisions appealed from, until it shall be passed upon by the Board of Adjustment. After such decisions proceedings in conformity herewith shall not be further stayed except as hereinafter provided.

The Board of Adjustment shall fix a reasonable time for the hearing of the appeal, give public notice thereof, as well as due notice to the parties in interest, and decide the same within a reasonable time. Upon the hearing any party may appear in person or by attorney at law.

The Board of Adjustment shall, subject to such appropriate conditions and safeguards as may be established by the County Board of Commissioners having the following powers:

1. To hear and decide appeals where it is alleged by appellant that there is an error in any order, requirement, decision or determination made by an administrative official or agency in the enforcement of this act or of any regulation adopted pursuant thereto.

2. To authorize upon appeal in specific cases such variance from the terms of such regulations as will not be contrary to the public interest, where, owing to special conditions fully demonstrated on the basis of the facts presented, literal enforcement of the provisions of the regulation will result in great practical difficulties or unnecessary hardship, and so that the spirit of the regulation shall be observed and substantial justice done.

3. To permit in appropriate cases, in harmony with the general purposes and intent of such regulations, a building or premises to be erected or used for public utility or public service purposes in any location which is reasonably necessary for public convenience and welfare.

In exercising the above mentioned powers such Board may, in conformity with the provisions of this Act, reverse or affirm, wholly or partly or may modify the order, requirement, decisions or determination appealed from and may take such order, requirement, decision and determination as ought to be made, and to that end shall have all the powers of the officer or agency from whom the appeal is taken.

A majority of the Board of Adjustment shall constitute a quorum and a majority vote of the members hearing the appeal shall be sufficient to determine the appeal.

Any person or persons who may have a substantial interest in any decision of the Board of Adjustment, or any officer, board or bureau of the said county, may appeal from any decision of the said Board of Adjustment to the Circuit Court in and for said county by filing with the Clerk of the said Court a petition in writing setting forth plainly, fully and distinctly wherein such decision is contrary to law. Such appeal will be filed within thirty days after the decision of the Board of Adjustment is rendered.

Upon the filing of such an appeal the Clerk of the Circuit Court shall give immediate notice thereof to the Secretary of the Board of Adjustment, and within thirty days from the time of such notice the Board of Adjustment shall cause to be filed with the said Clerk a duly certified copy of the proceedings had before the said Board of Adjustment, including a transcript of the evidence heard before it, if any, and the decision of the said Board.

Thereafter at the next term of the Circuit Court, or in vacation upon ten days' notice to the parties, the resident presiding judge of the Circuit Court of said county shall proceed to hear and pass upon the said appeal.

The findings of fact by the said Board of Adjustment shall be final and conclusive on the hearing of such appeal. In determining the questions presented by the Appeal the court shall determine only whether the decision of the Board of Adjustment is correct as a matter of law.

Any party at interest who is aggrieved by the judgment rendered by the Circuit Court upon which appeal may have the same reviewed by appeal in the same manner as now provided by law for fast bills of exceptions to other judgments, orders and decrees of the Superior Courts.

The filing of an appeal in the Superior Court from any decision of the said Board of Adjustment shall not *ipso facto* act as a supersedeas upon such terms and conditions as may seem reasonable and proper.

In the event that the decision of the Board of Adjustments should be reversed by the Circuit Court the said Board of Adjustments shall be cast with the costs and the same shall be paid by the county.

Section 13. In lieu of a separate Board of Adjustment for any county, it may join with one or more counties having similar zoning and planning authority in the establishment of a joint Board of Adjustment of five members having all of the jurisdiction, powers and incidence of the Boards of Adjustment for the several respective counties. Such joint Board of Adjustment may hold its hearings at such place or places in any of the counties within its jurisdiction as it may determine but the jurisdiction for appeal from such joint Board of Adjustment shall lie in the Circuit Court of the County in which the particular question arose. The several counties shall have authority to defray the proper expense of such joint Board of Adjustment and apportion such expenses among the participating counties.

The Council or other chief legislative bodies of any municipality located in whole or in part within the limits of any county may designate the County Board of Adjustment as the official municipal Board of Adjustment of said municipality and in the event of such designation and acceptance thereof by the County Board of Commissioners. The County Board of Adjustment shall have all of the powers and duties as provided by law for the municipal Board of Adjustment; and in the event there is no legislation for a municipal Board of Adjustment the power and authority granted the County Board of Adjustment shall obtain.

Section 14. The lawful use of a building or structure, or the lawful use of any land, as existing and lawful at the time of the promulgation of zoning regulations, or in the case of an amendment of zoning regulations, then at the time of such amendment, may, except as hereinafter provided, be continued although such does not conform with the provision of such regulations or amendment, and such use may be extended throughout the same building provided no structural alteration of such building is proposed or made for the purpose of such extension. The County Board of Commissioners may provide in any zoning regulations for the restoration, reconstruction, extension or substitution of non-conforming uses upon such terms and conditions as may be set forth in the zoning regulations. The County Board of Commissioners may in any zoning regulations provide for the termination of non-conforming uses, either by specifying the period or periods in which non-conforming uses shall be required to cease, or

by providing a formula or formulae whereby the compulsory termination of non-conforming uses be so fixed as to allow for the recovery or amortization of the investment in the non-conformance.

Section 15. The said Planning Board shall study the resources, possibilities and needs of the county and shall prepare a master plan and maps for the systematic future development of the said county and from time to time in the manner hereinbefore provided make such recommendations to the County Board of Commissioners as may be deemed advisable.

Section 16. Before any street or road is opened or extended or before any new subdivision for residence, business, or industrial use is made, the person or persons proposing to open or extend such streets or roads or such new subdivisions, shall submit a detailed plan of same, with other necessary data to the Planning Board. The Planning Board shall adopt regulations governing the subdivision of land within its jurisdiction. The adoption of such regulations shall follow the method of procedure covered in Section 10. It shall be the duty of such Planning Board to carefully examine such plans and specifications with regard to their nature and purpose, the width, character and location of such streets, alleys and roads in such subdivisions and the size, material, location, grades and manner of laying of water mains and sewer lines, and then transmit such applications, with all plans and data, to the County Board of Commissioners, with its recommendations thereon in writing. The jurisdiction of such Planning Board and the said County Board of Commissioners, shall for the purpose of this Act, extend to and include all of the land within the jurisdiction generally of said Commissioners. Before any such streets, alleys and roads or subdivisions shall be laid out as aforesaid, they shall be required to have the approval of the said County Board of Commissioners in accordance therewith.

The approval of the Planning Board and the County Board of Commissioners of such plan shall be deemed an acceptance of the dedication, shown thereon, but shall not impose any duty on the county concerning maintenance or improvement.

Section 16-a. Any residential sub-division formally approved by any agency of the United States before January 1, 1942, or any residential sub-division as to which application for approval is made to any such agency before January 1, 1943, and which is approved after that date by such agency, shall not be subject to any regulations for the subdivision of lands which may be adopted by the Planning Board and the County Board of Commissioners.

Section 17. In case any building or structure is erected, constructed, reconstructed, altered or repaired, converted or maintained, or any structure or land is used in violation of this Act, or of any regulations duly made under the authority conferred hereby, or in the event of the violation by any person or persons of any of the provisions of this Act, such violation in respect shall be held to be a misdemeanor under the laws of the State, and the offender upon conviction shall be punished as for a misdemeanor, and any court of the said county having jurisdiction of misdemeanor cases shall have jurisdiction to try such offenders and upon conviction to so

punish them; and provided further that each day that any structure or land is used in violation of this Act shall constitute a separate offense. In any case any building or structure is or is proposed to be erected, constructed, reconstructed, altered, maintained or used, or any land is or is proposed to be used in violation of this Act or of any regulation or amendment thereof, enacted or adopted by the County Board of Commissioners under the authority granted by this Act, such Commissioners, the County Attorney or any owner of real estate within the district in which such buildings, structure of land is situated, may, in addition to other remedies provided by law, institute injunction, abatement or any appropriate action or actions, proceeding or proceedings to prevent, enjoin, abate or remove such unlawful erection, construction, reconstruction, alteration, maintenance, or use.

In case of contempt by any party, witness or other person before either the Planning Board or the Board of Adjustment, such Board may certify such fact to the Circuit Court wherein such contempt occurs and the judge of said court, either in term time or vacation, after hearing, may impose such penalty as the facts authorize or require.

Section 18. The County Board of Commissioners is empowered to appropriate out of the general county funds, such monies, otherwise unappropriated, as they may deem fit to finance the work of the County Planning Board and the Board of Adjustment and to enforce the zoning regulations and restrictions which are adopted; and to accept grants of money, for those purposes, from either private or public sources, State or Federal.

Section 19. If any portions or provisions of this Act may be found unconstitutional, such invalidity shall not affect any other portion or provisions of this Act.

Section 20. All Acts and parts of Acts in conflict with this Act be and the same are hereby repealed.

Section 21. This Act shall take effect upon its approval by the Governor.

Signed by the Governor March 14, 1942.

CHAPTER VI

FINANCIAL STATEMENT—FISCAL YEAR 1941-1942

Item 1. Administration

Item	Budget	Expended	Balance
A. Personal Service			
A-3. Special Payments:			
Board Members	\$225.00	\$225.00	\$.....
B. Contractual Services			
B-2. Travel	430.92	430.92
	<u>655.92</u>	<u>655.92</u>	<u>\$.....</u>

Item 2. Superintendence

A. Personal Service			
A-1. Salaries:			
Senior Technician	\$2,100.00	\$2,100.00	\$.....
Stenographer-Clerk	1,180.00	1,180.00
A-3. Special Payments:			
Stenographic Services	156.00	156.00
Consultants	1,200.00	1,200.00
B. Contractual Services			
B-2. Travel	87.96	87.96
B-3. Telephone and Telegraph	270.00	264.24	5.76
B-5. Printing and Advertising	510.43	510.43
C. Supplies			
C-4. Office Supplies	690.89	682.31	8.58
G. Equipment			
G-1. Office Equipment	148.80	148.80
	<u>\$6,344.08</u>	<u>\$6,329.74</u>	<u>\$14.34</u>
Grand Total (State Planning Board)	\$7,000.00	\$6,985.66	\$14.34

PUBLICATIONS OF THE STATE PLANNING BOARD

Bulletin No.	Title
*1	<i>Progress Report on State Planning in South Carolina—1938</i>
**2	<i>The Fiscal System of South Carolina</i>
3	<i>The Natural Resources of South Carolina</i>
4	<i>The Manufactured and Agricultural Resources of South Carolina</i>
**5	<i>Industrial Directory of South Carolina</i>
**6	<i>County Taxes and Public Service in South Carolina</i>
7	<i>Parks and Recreational Areas in South Carolina</i>
8	<i>Building a New World with South Carolina Hardwoods, Plywoods, Plastics</i>
9	<i>Plastics from the Farms and Forests of South Carolina</i>
10	<i>An Opportunity for the Woolen and Worsted Industry in South Carolina</i>

*This report is now out of print. Material contained in it is brought up to date in Bulletin 3 and Bulletin 4.

**Reports which are now available for only limited distribution.

NOTE: Reports of the Board are distributed without cost. Requests should be addressed to:

S. C. STATE PLANNING BOARD
100 Calhoun State Office Building
Columbia, S. C.