

Report on Reclamation and Drainage
of Alkali Lands in Hungary.

By

G. G. Hawes



Government of Bombay
Public Works Department

Technical Paper No. 48

Report on Reclamation and Drainage
of Alkali Lands in Hungary

BY

C. G. HAWES, M.C., B.Sc. (Lond.), A.C.G.I., M.Inst.C.E., I.S.E.,

Executive Engineer, Development and Research Division

FIRST EDITION

[Price—Annas 7 or 9d.]

BOMBAY

PRINTED AT THE GOVERNMENT CENTRAL PRESS

1933

Obtainable from the Superintendent, Government Printing and Stationery,
Bombay, or through the High Commissioner for India, India House,
Aldwych, London, W.C. 2, or through any recognized Bookseller

List of Bombay Public Works Department Technical Papers.

Paper No.	Subject	Price	Year of publication	Number of copies in stock (May 1933)
		Rs. a. p.		
1	Reinforced Concrete Flooring in the Hostel for the High School at Satara (Bombay Presidency), by W. L. C. Trench, B.A.I., A.M.I.C.E., Executive Engineer, and T. S. Mirchandani, B.Sc. (Edin.), Assistant Engineer.	1913	Out of stock.
2	Famine Relief Road Works carried out in the Banda District, United Provinces, in the famine of 1913-14, by D. R. H. Browne, A.K.C., Executive Engineer.	1915	"
3	Note on the Lower Ganges Bridge Works at Sara, Bengal, by D. R. H. Browne, A.K.C., Executive Engineer.	1915	"
4	Report on experiments on Concrete Flooring carried out at Poona (Bombay Presidency), by Conductor T. H. Naughton, Sub-Engineer.	1917	"
5	Reinforced Concrete Work in the Bombay Presidency, by J. C. Gammon, B.Sc., A.C.G.I., late Assistant Engineer, Bombay Public Works Department.	1917	"
6	Reinforced Concrete Roof Construction for use with ceiling tiles, by J. M. Mackay, A.M.I.C.E., Executive Engineer.	1917	"
7	Report on the Felling of the Masonry Chimney at Dapuri (Bombay Presidency), by H. W. Oddin Taylor, A.C.G.I., B.Sc., Executive Engineer.	1920	"
8	Note on the Tests carried out with Reinforced Concrete Brick Walling Loaded as a Beam, by Khan Saheb J. D. Dubash, Assistant Engineer.	1920	"
9	Note on the Manufacture of Hydraulic Lime in the Nasik and Ahmednagar Districts of the Bombay Presidency, 1920, by Rao Saheb V. K. Chapekar, Temporary Engineer.	1921	"
10	Glossary of Irrigation Terms applicable to the Deccan Canals.	1921	"
11	Report on the Malir River Boring Investigations for the Karachi Water Supply, by W. C. Dooris, Executive Engineer, Boring Works, Bombay Presidency, with a note by H. O. B. Shoubridge, M.Inst.C.E., Chief Engineer for Irrigation.	1925	"
12	A Note on the Design, Application and Construction of Masonry Semi-Modules as used on the Jamrao Canal, by W. Kirkpatrick, Executive Engineer (2nd Edition).	1925	"
13	Soil and Sub-soil Surveys in the Deccan Canal areas, by C. C. Inglis, Executive Engineer, and V. K. Gokhale, Deputy Soil Physicist (2nd Edition).	1929	"
14	A Short Note on the Improvement of Damaged Lands in the Canal Irrigated Tracts of the Bombay Deccan, by C. C. Inglis, Executive Engineer.	1927	"
15	Notes on Standing Wave Flumes and Flume Meter Falls, by C. C. Inglis, Executive Engineer, Special Irrigation Division.	1928	"
16	Note on Irrigation on the Block System in the Deccan Canal Tracts, by C. C. Inglis, I.S.E., Executive Engineer, Special Irrigation Division.	1927	"
17	Note on the Effluent Farm near Poona (1918-19 to 1925-26), by C. C. Inglis, B.A., B.A.I., M.Inst.C.E., Executive Engineer, Special Irrigation Division.	1927	"
18	Note on the Use of Hydro-Electric Power by Small Industries in Switzerland, Norway and Sweden, by F. O. J. Roose, M.I.M.E., M.I.E.E., F.C.S., Electrical Engineer to Government.	1 14 0	1928	110
19	Note on the Design of Tributaries and their Outlets in the Bombay Deccan, by C. C. Inglis, B.A.I., A.M.Inst.C.E., Executive Engineer, Special Irrigation Division.	1928	Out of stock.
20	Note dated November 1927 on "Model experiments to ascertain the effect of Partial Lining of the Malegaon Cut" in miles 38 and 39 of the Nira Left Bank Canal, by C. C. Inglis, B.A.I., M.Inst.C.E., Executive Engineer, Special Irrigation Division, and D. V. Joglekar, B.E., Assistant Engineer.	1 0 0	1928	113

Paper No.	Subject	Price	Year of publication	Number of copies in stock (May 1933)
		Rs. a. p.		
21	Note on the Outturn and Profit from Sugarcane Crops grown in the Deccan Canal Tracts, by C. C. Inglis, B.A.I., M.Inst.C.E., Superintending Engineer, Irrigation Development and Research Circle, and V. K. Gokhale, B.Ag., Deputy Soil Physicist.	1 3 0	1928	23
22	Note on Experiments carried out at the Hydraulic Testing Station at Distributary No. 5, Mutha Right Bank Canal, near Poona, with a Lindlay type Standing Wave Flume, by C. C. Inglis, B.A.I., M.Inst.C.E., Superintending Engineer, Irrigation Development and Research Circle, Bombay, with the assistance of D. V. Joglekar, B.E., Assistant Engineer.	0 10 0	1928	7
23	A Note on Standing Wave Pipe Outlets, by C. C. Inglis, B.A., B.A.I., M.Inst.C.E., Superintending Engineer, Irrigation Development and Research Circle, Bombay.	1928	Out of stock.
24	Report on Land Drainage Experiments at Baramati, by C. C. Inglis, B.A., B.A.I., M.Inst.C.E., Superintending Engineer, Irrigation Development and Research Circle, with V. K. Gokhale, B.Ag., Deputy Soil Physicist, and the staff of Baramati Development Sub-division.	2 1 0	1928	59
25	Moduling Operations on Distributary No. 8, Nira Left Bank Canal, and application of the Results to other Distributaries, by C. C. Inglis, B.A.I., M.Inst.C.E., Superintending Engineer, Irrigation Development and Research Circle, with D. V. Joglekar, Assistant Engineer.	0 12 0	1928	41
26	Report on Tests made on a Model of the Group of Regulators at Oderolal at mile 169 approximately of the Rohri Main Canal, Sind, by C. G. Hawes, M.C., B.Sc. (Lond.), A.C.G.I., A.M.Inst.C.E., Executive Engineer, Central Designs Division, Karachi, and C. C. Inglis, B.A.I., A.M. Inst. C.E., Superintending Engineer, Irrigation Development and Research Circle, Poona.	1 11 0	1928	41
27	Report on Experiments on Model Culverts made with Hume Pipes, by C. G. Hawes, M.C., B.Sc. (Lond.), A.C.G.I., A.M.Inst.C.E., Executive Engineer, Central Designs Division, and H. S. Kahai, Assistant Engineer, with Appendix containing a Note on the use of Hume Pipes for Irrigation purposes based on Notes by C. C. Inglis, B.A.I., M.Inst.C.E., Superintending Engineer, Irrigation Development and Research Circle.	1 3 0	1929	60
28	Note on "Research Work done by the Special Irrigation Division since its formation in June 1916," by C. C. Inglis, B.A., B.A.I., M.Inst.C.E., Superintending Engineer, Irrigation Development and Research Circle.	0 8 0	1929	106
29	Note on "Experiments carried out with various designs of piers and sills in connection with the Llayd Barrage at Sukkur," by C. C. Inglis, B.A.I., M.Inst.C.E., Superintending Engineer, Irrigation Development and Research Circle, and C. G. Hawes, M.C., B.Sc., A.M.Inst.C.E., Executive Engineer, Central Designs Division, with J. S. Reid, B.Sc., Assistant Executive Engineer, D. J. Joglekar, B.E., Assistant Engineer, and H. V. Katakhar, B.E., Temporary Engineer.	2 10 0	1929	73
30	A Note on "A Critical study of Run off and floods of catchments of the Bombay Presidency with a short note on losses from lakes by evaporation," by C. C. Inglis, B.A.I., M.Inst.C.E., Superintending Engineer, Irrigation Development and Research Circle, with A. J. DeSouza, B.E., Assistant Engineer.	4 7 0	1930	67
31	Report on Experiments carried out at the Karachi Model Testing Station on a Model of a Flumed Regulator, by C. G. Hawes, M.C., B.Sc. (Lond.), A.M.Inst.C.E., Executive Engineer, Central Designs Division, and H. S. Kahai, Assistant Engineer, with a note, by W. A. Evershed, B.Sc. (Lond.), A.M.Inst.C.E., Superintending Engineer, Irrigation Development and Research Circle.	0 7 0	1929	58
32	Note on Experiment on a model of the Bifurcation on the North Western Perennial Canal at the head of the Warah Branch, by C. G. Hawes, M.C., B.Sc. (Lond.), A.C.G.I., A.M.Inst.C.E., Executive Engineer, Central Designs Division, and H. S. Kahai, Assistant Engineer.	0 12 0	1929	85

Paper No.	Subject	Price	Year of publication	Number of copies in stock (May 1933)
		Rs. a. p.		
33	Report on experiments carried out in the Central Designs Division, Lloyd Barrage and Canals Construction, in the Karachi Testing Station on a model of syphon proposed to be constructed on the North-Western Railway by C. G. Hawes, M.C., B.Sc. (Lond.), A.C.G.I., A.M.Inst.C.E., Executive Engineer, Central Designs Division, and H. S. Kahai, Assistant Engineer.	0 12 0	1930	81
34	Report on experiments carried out on a model of the Makhi Right Distributary of Mithrao Canal, Eastern Nara Division (Sind), by C. G. Hawes, M.C., B.Sc. (Lond.), A.C.G.I., M.Inst.C.E., Executive Engineer, Central Designs Division, and H. S. Kahai, Assistant Engineer.	3 2 0	1930	35
35	Report on the installation and testing of various types of radial gates on the 84th mile Jamrao Canal, by C. G. Hawes, M.C., B.Sc. (Lond.), A.C.G.I., M.Inst.C.E., Executive Engineer, Central Designs Division.	1 6 0	1931	84
36	Note on road construction in the Nili Bar Colony, Punjab, by H. B. Parikh, L.C.E., M.I.E., (Ind.), Executive Engineer on Special Duty, Sind Roads, including summaries of important details.	0 3 0	1931	59
37	Standard type buildings for the Forest Department, Bombay Presidency—Abstract estimates, block plans, specifications, etc., by T. S. Pipe, B.Sc., M.Inst.C.E., Executive Engineer, Poona Division (formerly Superintending Engineer, Forest Department, Bombay Presidency).	1 8 0	1932	190
38	Standard Forest Roads—Cross sections and earthwork tables, by T. S. Pipe, B.Sc., M.Inst.C.E., Executive Engineer, Poona Division (formerly Superintending Engineer, Forest Department, Bombay Presidency).	0 11 0	1931	41
39	Note on the resurfacing of the Nasik Station Road with various asphalts, cement macadam and cement concrete, by L. E. Greening, A.M.Inst.C.E., M.Inst.Struct.E., Executive Engineer, Nasik Division.	1 9 0	1931	117
40	Note on cement concrete roads in the United Provinces and on the financial aspects of cement concrete and asphalt surfaces, by T. C. Kantawala, L.C.E., M.R.San.I., Special Officer, Road Development Schemes.	0 4 0	1931	63
41	Note on boring operations in the Bombay Presidency by A. P. Maddocks, B.Sc., M.Inst.C.E., Superintending Engineer, Public Health, Bombay.	0 5 0	1931	132
42	Notes on (1) Flumed Aqueducts, (2) Remodelling an existing Canal or Distributary to pass an increased discharge, (3) Afflux caused by heading up water at regulators of a Canal and the extent of backwater and (4) Distribution of velocities in channels, by C. C. Inglis, B.A., B.A.I., M.Inst.C.E., Superintending Engineer, Irrigation Development and Research Circle.	0 4 0	1932	77
43	Concise Report on the Punjab Irrigation Works, by M. T. Gibling, B.A. (Cantab.), I.S.E., Executive Engineer, Northern Dadu Division.	0 14 0	1932	33
44	The dissipation of energy below falls, by C. C. Inglis, B.A., B.A.I., M.Inst.C.E., Superintending Engineer, Irrigation Development and Research Circle, and D. V. Joglekar, B.E., Assistant Engineer.	In Press
45	Note of May 1931 on Silt Exclusion from Canals, "Still Pond" versus "Open Flow," Part I, by C. C. Inglis, B.A., B.A.I., M.Inst.C.E., I.S.E., Superintending Engineer, Irrigation Development and Research Circle.	0 15 0	1933	100
46	Note on Silt Exclusion from Canals, Part II—First report on experiments with the full width model of the Sukkur Barrage at Khadakvasla with Appendices on the design of dynamically similar models in accordance with Lacey's formulas, by C. C. Inglis, B.A., B.A.I., M.Inst.C.E., I.S.E., Superintending Engineer, Irrigation Development and Research Circle, and D. V. Joglekar, B.E., Assistant Engineer.	In Press
47	Report on experiments carried out on Models of Standard Vertical Screw Gates adopted in the Lloyd Barrage and Canals Scheme, by C. G. Hawes, M.C., B.Sc. (Lond.), A.C.G.I., M.Inst.C.E., I.S.E., Executive Engineer, Development and Research Division.	In Press

Copies obtainable from the Superintendent, Government Printing and Stationery, Bombay, or through the High Commissioner for India, India House, Aldwych, London, W.C.2, or through any recognized bookseller.

CONTENTS

1. PHOTOGRAPH : DISC CULTIVATING MACHINE USED FOR HEAVY CLAY SZIK SOILS.

Section I—Alkali Lands.

- (1) GENERAL.
- (2) BRIEF DESCRIPTION OF MAIN TYPES OF ALKALI SOILS IN HUNGARY.
- (3) THE FORMATION OF ALKALI SOILS IN HUNGARY.
- (4) DISTRIBUTION OF ALKALI SOILS IN HUNGARY.
- (5) DESCRIPTION OF TOUR.
- (6) THE INVESTIGATION OF ALKALI LANDS WITH A VIEW TO RECLAMATION.
- (7) CHARACTERISTIC FLORA OF HUNGARIAN ALKALI SOILS.
- (8) METHODS OF RECLAMATION.
- (9) THE ORGANISATION OF LAND RECLAMATION IN HUNGARY.
- (10) GENERAL CONCLUSIONS.

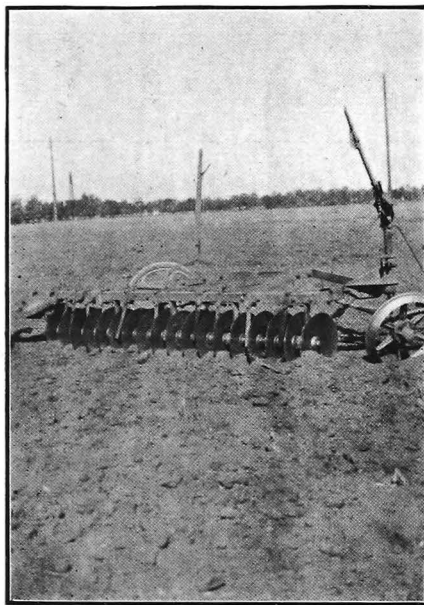
Section II—River Control, Drainage and Irrigation Works.

- (1) SYSTEM OF RIVER CONTROL.
- (2) DRAINAGE WORKS.
- (3) IRRIGATION AND IRRIGATION PROJECTS.

Section III—Agricultural Education.

- (1) AGRICULTURAL EDUCATION SYSTEM.

CONCLUDING PARAGRAPH.



DISC CULTIVATING MACHINE USED FOR
HEAVY CLAY SZIK SOILS