



Government of Bombay
Public Works Department

Technical Paper No. 24

Report on Land Drainage Experiments at Baramati

BY

C. C. INGLIS, B.A., B.A.I., M.INST.C.E.,
Superintending Engineer, Irrigation Development and Research Circle

WITH

V. K. GOKHALE, B.A.G.,
Deputy Soil Physicist

and the Staff of Baramati Development Subdivision

[Price—Rs. 2 Anna 1 or 4s.]

BOMBAY

PRINTED AT THE GOVERNMENT CENTRAL PRESS

1928

Available from the Superintendent of Government Printing and Stationery,
Bombay; from the High Commissioner for India, 42 Grosvenor Gardens,
S.W.1, London; or through any recognized Bookseller

List of Bombay Public Works Department Technical Papers

Paper No.	Subject	Price	Year of publication	Number of copies in stock (July 1928)
		Ra. a. p.		
1	Reinforced Concrete Flooring in the Hostel for the High School at Satara (Bombay Presidency), by W. L. C. Trench, B.A.I., A.M.I.C.E., Executive Engineer, and T. S. Mirchandani, B.Sc. (Edin), Assistant Engineer.	1913	Out of stock.
2	Famine Relief Road Works carried out in the Banda District, United Provinces, in the Famine of 1913-14, by D. R. H. Browne, A.K.C., Executive Engineer.	1915	Do.
3	Note on the Lower Ganges Bridge Works at Sara, Bengal, by D. R. H. Browne, A.K.C., Executive Engineer.	1916	Do.
4	Report on experiments on Concrete Flooring carried out at Poona (Bombay Presidency), by Conductor T. H. Naughton, Sub-Engineer.	1917	Do.
5	Reinforced Concrete Works in the Bombay Presidency by J. C. Gammon, B.Sc., A.C.G.L., late Assistant Engineer, Bombay Public Works Department.	1917	Do.
6	Reinforced Concrete Roof Construction for use with ceiling tiles, by J. M. Mackay, A.M.I.C.E., Executive Engineer.	1917	Do.
7	Report on the Felling on the Masonry Chimney at Dapuri (Bombay Presidency), by H. W. Oddin-Taylor, A.C.G.L., B.Sc., Executive Engineer.	1920	Do.
8	Note on the Tests carried out with Reinforced Concrete Brick Walling loaded as a Beam, by Khan Saheb J. D. Dubash, Assistant Engineer.	1920	Do.
9	Note on the Manufacture of Hydraulic Lime in the Nasik and Ahmednagar Districts of the Bombay Presidency, 1920, by Rao Sahab V. K. Chapekar, Temporary Engineer.	1921	Do.
10	Glossary of Irrigation Terms applicable to the Deccan Canals.	1921	Do.
11	Report on the Malir River Boring Investigations for the Karachi Water Supply by H. O. B. Shoubridge, M.Inst.C.E., Chief Engineer for Irrigation.	1925	Do.
12	A Note on the Design, Application and Construction of Masonry Semi Modules as used on the Jamrao Canal, by Mr. Kirkpatrick, Executive Engineer (2nd Edition).	0 12 6	1925	Do.
13	Soil and Subsoil Surveys in the Deccan Canal Areas, by C. C. Inglis, Executive Engineer, and V. K. Gokhale, Deputy Soil Physicist.	0 6 0	1926	Do.
14	A short Note on the Improvement of Damaged Lands in the Canal Irrigated Tracts of the Bombay Deccan, by C. C. Inglis, Executive Engineer.	0 4 6	1927	15
15	Notes on Standing Wave Flumes and Flume Meter Falls, by C. C. Inglis, Executive Engineer, Special Irrigation Division.	1928	200
16	Note on Irrigation on the Block System in the Deccan Canal Tracts, by C. C. Inglis, I.S.E., Executive Engineer, Special Irrigation Division.	0 5 0	1927	55
17	Note on the Effluent Farm near Poona (1918-19 to 1925-26), by C. C. Inglis, B.A., B.A.I., M.Inst.C.E., Executive Engineer, Special Irrigation Division.	0 15 0	1927	55
18	Note on the use of Hydro-Electric Power by small Industries in Switzerland, Norway and Sweden, by F. O. J. Roose, M.I.M.E., M.I.E.E., Electrical Engineer to Government.	In Press.
19	Note on the Design of Distributaries and their Outlets in the Bombay Deccan, by C. C. Inglis, B.A., B.A.I., M.Inst.C.E., Executive Engineer, Special Irrigation Division.	1928	100
20	Note dated November 1927 on 'Model experiments to ascertain the effect of partial lining of the Malegaon Cut in miles 38 and 39 of the Nira Left Bank Canal,' by C. C. Inglis, B.A., B.A.I., M.Inst.C.E., Executive Engineer, Special Irrigation Division, and D. V. Joglekar, B.E., Assistant Engineer.	1928	200

Paper No.	Subject	Price	Year of publication	Number of copies in stock (July 1928)
		Rs a. p.		
21	Note on the Outturn and Profit from Sugarcane Crops grown in the Deccan Canals tracts, by C. C. Inglis, B.A., B.A.I., M.Inst.C.E., Superintending Engineer, Irrigation Development and Research Circle.	1928	100
22	Note on experiments carried out at the Hydraulic Testing Station at Distributary No. 5, Mutha Right Bank Canal near Poona with a Lindley type Standing Wave Flume, by C. C. Inglis, B.A., B.A.I., M.Inst.C.E., Superintending Engineer, Irrigation Development and Research Circle, with the assistance of D. V. Joglekar, B.E., Assistant Engineer.	1928	100
23	A Note on Standing Wave Pipe Outlets, by C. C. Inglis, B.A., B.A.I., M.Inst.C.E., Superintending Engineer, Irrigation Development and Research Circle.	In Press.

Copies obtainable from the Superintendent, Government Printing and Stationery, Bombay, or through any recognised Bookseller.

REPORT ON LAND DRAINAGE EXPERIMENTS AT BARAMATI

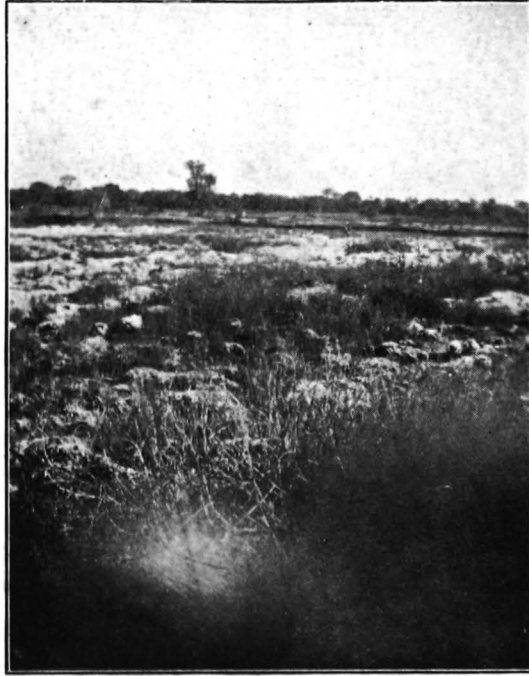
INDEX

PARAS.

1. Damage caused by the introduction of canals.
2. Previous attempts at land drainage in the Nira Left Bank Canal area.
3. Pumping experiment at Baramati.
4. Area selected for the drainage experiments at Baramati.
5. Condition of the area before acquisition in 1915.
6. Early proposals for drainage.
7. Nala trench.
8. Upper Trench.
9. South Trench.
10. Middle Trench.
11. Effect of trenches constructed up to end of April 1916 on water levels.
12. Hydro-isobaths in 1915 and 1916.
13. Water levels and hydro-isobaths of 1917.
14. Small effect of intercepting trench—segregation of area impracticable.
15. Necessity of subsoil surveys—Rendered feasible by post-hole auger.
16. Information obtained from subsoil surveys. Movement of Deccan rivers and nalas.
17. What the data showed.
18. Discharging capacities of various trenches.
19. Lessons learnt from subsoil survey.
20. Work done in 1918-19, based on subsoil survey.
21. Effect of work on water levels.
22. Effect of cross trench.
23. Result of lowering the pipe line of the Middle trench.
24. Effect on the water levels in the adjoining area caused by blocking drainage of the Middle trench.
25. Effect of drainage on land higher up the valley.
26. Deepening of the South trench.
27. Water levels on either side of the South trench before and after excavation.
28. Effect of deepening the South drain.
29. Discharge from the South pipe line.
30. Area between Phaltan and Nira roads.
31. Area above Nira road.
32. Soluble salts contained in the drainage waters from the trenches.
33. Hydro-isobaths.
34. Changes in the salt contents of the subsoil water.
35. Intensity of salt in the soil.
36. Ecology and plant succession.
37. Economic plants and crops.
38. Data obtained from the drainage experiments at Baramati.
39. Relative effectiveness of various trenches.
40. Relationship between cane area in the catchment and total drainage water.
41. Estimated loss of irrigation water through the subsoil.
42. Cane area and damaged area compared.
43. Evaporation of subsoil water through the soil surface of damaged lands.
44. Total quantity of water drained and salts removed during the past ten years.
45. Three zones in the area, showing characteristic grouping of soluble salts.
46. Quality of drainage water from the trenches.
47. Summary of conclusions.

Statements I, II, III and IV.

Figures, 1 to 21.



1. Photo of Plot No. 24 showing salt and *Panicum Fluitans* in foreground.



2. Photo showing salt encrustation in Plot No. 24 of Baramati salt lands. Note match box.



3. Photograph looking across salt land towards Malad from Plot No. 24.



4. EXPERIMENTAL SALT AREA—BARAMATI.—Cane grown by Mr. Shembekar in reclamation plots (1921-22) : outturn 55 pallas of gul.



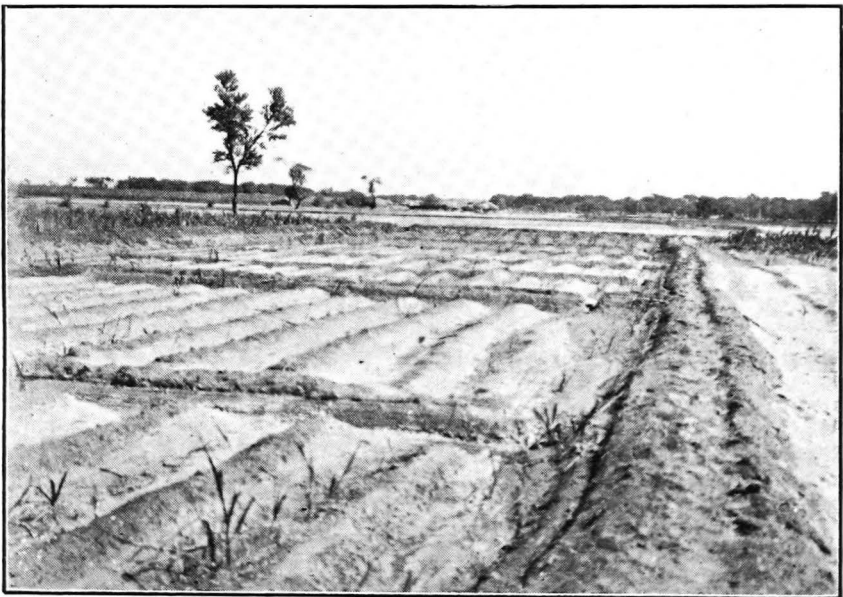
5. S. No. 42 above Nira-Baramati road looking N.E.



6. S. No. 126 looking N.E.



7. S. No. 123 looking W.



8. S. Nos. 122 and 123 looking E.N.E.