



**CENSUS OF INDIA 1941**  
**VOLUME XXI**  
**H.E.H. THE NIZAM'S DOMINIONS**  
**(Hyderabad State)**  
**PART I.—REPORT**

BY

**MAZHAR HUSAIN, M.A., B.Sc.,**  
*Census Commissioner*  
and  
*Director of Statistics.*

**Government Central Press**  
**Hyderabad-Dn.**  
**1945**

**Seventh Issue**

**Price Rs. 7/-**

CENSUS REPORT OF HYDERABAD STATE 1941.

VOLUME I.

ERRATA SLIP.

Page	Line	Incorrect	Correct
2.	5	'9135'	'1935'
5.	3	'Through out Dominions'	'Throughout the Dominions'
9.	23	' <i>Abi Crop</i> '	'the <i>Abi Crop</i> .'
9.	24	'4 to 7'	'5 to 7'.
11.	11	'Yeild of estimates'	'Yield estimates'
18.	15	'Important'	'Imported'
25.	28	'1937'	'1939'
26.	24	'was suggested medicines'	'was suggested of medicines'
29.	6	'roads long mileage'	'roads with long mileage'
54.	29	'as a centre of a family'	'as the centre of a family'
85.	17	'persils'	'perils'
90.	Para No.	'75'	'69'
128.	3	'well do I remember that necessary gleam of light etc. etc. etc.,'	'well do I remember that dark hot little office in the hospital at Begampett with the necessary gleam of light etc. etc.'
147.	21	'afflicted'	'afflicted'
148.	Stt. Col. 3	'29'	'2.9'
148.	do	'28'	'2.8'
148.	do	'20'	'2.0'
148.	do	'15'	'1.5'
175.	Stt. Col. 1	'Construction of means of livelihood'	'Construction of means of transport'
182.	41	'only in'	'only with'
202.	Para No.	'162'	'165'
227.	Item 9	'Nirfal'	'Nirmal'
227.	Para 188	'Appendix "A"'	'Appendix. I'
233.	33	'spread of education among their subjects. It was thus more than appropriate etc. etc.'	'spread of education among their subjects. In this respect the present ruler has surpassed his predecessors. It was thus etc. etc. etc.'
236.	85	'rcal'	'zeal'

MAPS AND CHARTS.

i	Map No. 1	'Scale 128 miles=1 inch.'	'Scale 64 miles=1 inch.'
45.	" 14	'Taluk' (in the heading)	'Taluq'
50.	" 17	'1941-41' (in the heading)	'1940-41'
76.	" 20	'Whippies' (in the heading)	'Whipples'
98.	" 80	'Male widower'	'Widowers'
98.	" 80	'Female widower'	'Widows'
159.	" 46	'Working' (in the heading)	'Working population'
165.	" 49	'The Chart facing page 164 and 165.'	'The Chart is to face page 163'
165.	" 49	'49'	'48'

CENSUS REPORT OF HYDERABAD STATE 1941

VOLUME I.

ERRATA SLIP No. 2.

Page	Line	Incorrect	Correct
10	2	Area ..	Acres ..
21	42	joint-banks ..	joint-stock banks ..
26	24	gested medicines	gested of medicines ..
136	19	1931 Census figure for the whole district was only 346. Referring to which Dichpalli is situated).	1931 Census Report that, there were in Nizamabad Taluqa alone (in which Dichpalli is situated).
147	21	Afficted ..	Affected ..
219	Last line of Statement.	63.5 ..	81.4 ..
219	11	Aryas and Brahmans	Aryas, Brahmins and Harijans.
219	13	63.5 ..	81.4 ..

## TABLE OF CONTENTS

	PAGE
FOREWORD .. .. .	i—v
i. The Census .. .. .	i
ii. General Arrangements .. .. .	ii
iii. Census Divisions .. .. .	ii
iv. Staff .. .. .	iii
v. Programme of work .. .. .	iii
vi. Special Enquiries .. .. .	iii
vii. Tabulation .. .. .	iii
viii. C.C.I.'s remarks regarding 1941 Census .. .. .	iv
ix. Acknowledgements .. .. .	iv

### PART I.—GENERAL.

#### CHAPTER I.

##### *The Dominions in the decade 1931-41 A.D.*

SECTION No.		
1.	Position of Hyderabad State .. .. .	I
2.	Area .. .. .	I
3.	Copy of the letter from King Edward VIII, the Emperor of India, to H.E.H. the Nizam regarding Berar .. .. .	I
4.	Political History of Asaf Jahi territory .. .. .	2
5.	Natural Divisions .. .. .	2
6.	Administrative Divisions .. .. .	3
7.	Physical Features .. .. .	4
8.	Forests .. .. .	4
9.	Climate and Rainfall .. .. .	5
10.	Seasonal conditions .. .. .	7
11.	Agriculture .. .. .	9
12.	Important Food and Cash Crops .. .. .	11
13.	Staple food of the People .. .. .	11
14.	Agricultural Marketing .. .. .	12
15.	Land Revenue Relief and Loans .. .. .	12
16.	Rural Development .. .. .	12
17.	Irrigation .. .. .	13
18.	Co-operative Movement .. .. .	14
19.	Industrial Development .. .. .	15
20.	Cottage Industries .. .. .	18
21.	Industrial Trust Fund .. .. .	19
22.	Rural Indebtedness .. .. .	19

SECTION No.	PAGE
23. Acts .. .. .	20
(a) The Land Alienation Act .. .. .	20
(b) The Debt Conciliation Act .. .. .	20
(c) The Money Lenders Act .. .. .	21
(d) The Land Mortgage Act .. .. .	21
(e) The Record of Rights Act .. .. .	21
(f) The Hyderabad Bhagela Act .. .. .	21
(g) The Hyderabad State Bank Act .. .. .	21
24. Prices and Trade .. .. .	22
25. Price Control .. .. .	25
26. Communications .. .. .	26
27. Railways .. .. .	26
28. Financial results of Railways .. .. .	27
29. Roads .. .. .	28
30. Co-ordination of Rail and Road Service .. .. .	29
31. Political Events .. .. .	29
32. The Reforms .. .. .	30

## CHAPTER II.

POPULATION :—*Its Movement and Distribution.*

33. Early Accounts of the Population and Past Censuses ..	33
34. Population Census in 1941— <i>De facto</i> and <i>De jure</i> Population ..	36
35. The Growth of Population since 1881 A.D. .. .. .	36
36. Disturbing Factors .. .. .	38
37. Comparison with other Provinces .. .. .	39
38. Distribution by Natural Division .. .. .	40
39. District Population .. .. .	41
40. Average District Population .. .. .	42
41. Average Taluq Population .. .. .	44
42. Density of Population .. .. .	45
43. Density and Crop Cultivation .. .. .	49
44. Pressure of Population .. .. .	51
45. Houses and Families .. .. .	52
46. Number of Houses and House Density .. .. .	53
47. Houses in Urban and Rural Areas .. .. .	53
48. Number of Persons per house .. .. .	54
49. Urbanisation .. .. .	54
(a) Units of Population .. .. .	54
(b) General Remarks .. .. .	55
(c) Towns and Urban Population .. .. .	56

SECTION No.	PAGE.
(d) Town Planning Development .. .. .	56
(e) Provisions of Town Amenities .. .. .	58
(f) Variation in Urban Population .. .. .	58
(g) Causes of Growth .. .. .	58
(h) Community Distribution of Urban Population .. .. .	59
50. Cities .. .. .	61
i. City of Hyderabad .. .. .	61
ii. Warangal City .. .. .	64
iii. Aurangabad City .. .. .	65
iv. Gulbarga City .. .. .	65
51. Rural Areas .. .. .	65
52. Typical Telingana Villages .. .. .	67
53. Typical Marathwara Villages .. .. .	68
54. Typical Karnatic Villages .. .. .	68

### CHAPTER III.

#### *Age and Sex*

55. Importance of Age Statistics .. .. .	69
56. Preference for some numbers in giving out the age .. .. .	70
57. Comparison with previous Census .. .. .	70
58. 1941 Population by Age Groups .. .. .	70
59. Progressive Nature of Population .. .. .	71
60. Age and Sex Statistics for Certain Communities .. .. .	73
61. The proportion of Children by Communities .. .. .	74
62. Age Stages of Human life .. .. .	75
63. Mean age—Its importance .. .. .	76
64. Mean age of certain Communities .. .. .	77
65. Centenarians .. .. .	79
66. Sex ratio—Variations since 1901 .. .. .	80
67. Preponderance of Masculinity .. .. .	83
68. Sex ratio in natural division and in Urban areas .. .. .	86
69. Deficiency of Females .. .. .	90

### CHAPTER IV.

#### *Civil Conditions.*

70. Marriage .. .. .	92
71. Marriage Contracting Parties .. .. .	92
72. Polygamy .. .. .	92
73. Child Marriage .. .. .	92
74. Widow Marriage .. .. .	93

SECTION No.	PAGE.
75. Marriage Registration .. .. .	93
76. Divorce .. .. .	95
77. Statistics of Civil Conditions. .. .. .	95
78. Variation by locality .. .. .	100
79. Civil condition in cities .. .. .	100
80. Widowhood Statistics .. .. .	100
81. Divorce Statistics .. .. .	102

## CHAPTER V.

*Birth-Place and Migration.*

82. Importance of these Statistics .. .. .	104
83. Classes of Migration .. .. .	104
84. Accuracy of Statistics .. .. .	104
85. Migration affecting Population .. .. .	105
86. Immigration—Indian and Foreign .. .. .	107
87. Immigration in natural divisions .. .. .	109
88. Districts with 5,000 and over immigrants .. .. .	110
89. Immigrants classified according to number of years residence..	110
90. Immigrants classified according to Community .. .. .	111
91. Emigration—restricted data .. .. .	111
92. Emigration to certain States .. .. .	112
93. The usual excess of Emigrants over Immigrants .. .. .	112
94. Hyderabadis Temporarily residing elsewhere .. .. .	113
95. Their distribution by communities .. .. .	113

## CHAPTER VI.

*Public Health.*

96. General .. .. .	115
97. Maternity Benefit and Child Welfare Centres .. .. .	116
98. Birth Control .. .. .	116
99. Health Examination of School Children .. .. .	116
100. Small Pox .. .. .	116
101. Vital Statistics .. .. .	117
102. Birth and Death rate .. .. .	117
103. Vital Statistics of Hyderabad City .. .. .	117
(a) Area and Population .. .. .	117
(b) Births .. .. .	119
(c) Deaths .. .. .	119
(d) Malaria .. .. .	119
(e) Plague .. .. .	120

SECTION No.	PAGE
(f) Cholera .. .. .	120
(g) Leprosy .. .. .	120
(h) Tuberculosis or consumption .. .. .	121
104. A Note on Public Health by Dr. M. Farooq. .. .. .	122

### CHAPTER VII.

#### *Infirmities*

105. Value of Infirmity Statistics .. .. .	136
106. Infirmities .. .. .	137
107. Distribution by Natural Divisions .. .. .	138
108. Distribution by Sex .. .. .	139
109. Distribution by Age .. .. .	139
110. Distribution by Community .. .. .	139
111. Blindness .. .. .	140
112. Deaf—Mutes .. .. .	142
113. Insanity .. .. .	144
114. Infirmity .. .. .	145
115. Occupational distribution of infirmities .. .. .	146
116. Guinea Worm .. .. .	147

### PART II.—OCCUPATIONAL

#### CHAPTER VIII.

##### *Means of Livelihood—General.*

117. General .. .. .	150
118. Difficulties of enumeration .. .. .	150
119. The scheme of classification .. .. .	151
120. Limitation of the classification .. .. .	151
121. General occupational trends .. .. .	154
122. Principal and subsidiary workers .. .. .	156
123. Subsidiary workers .. .. .	158
124. Distribution by natural divisions .. .. .	159
125. Means of livelihood for females .. .. .	162

#### CHAPTER IX.

##### *Exploitation of Vegetation, Animals and Minerals*

126. General .. .. .	163
127. Agricultural conditions during the decade .. .. .	163
128. Partially agriculturists .. .. .	168
129. Possibilities of agricultural development in the State .. .. .	169



SECTION No.	PAGE
130. Agricultural Department .. .. .	169
131. Dry Farming .. .. .	170
132. Mixed Farming .. .. .	170
133. Exploitation of animals .. .. .	171
(a) Stock raising .. .. .	171
(b) Cattle Population .. .. .	171
(c) Buffalo Population .. .. .	171
(d) Sheep and Goat Farming .. .. .	171
(e) Pig-keeping .. .. .	171
(f) Poultry Farming .. .. .	172
(g) Hunting and Fishing .. .. .	172
(h) Department of Fisheries .. .. .	172
134. Exploitation of Minerals .. .. .	173

## CHAPTER X.

*Industry or Manufacture.*

135. General .. .. .	174
136. Textiles .. .. .	176
137. Cotton Textiles .. .. .	176
138. Silk .. .. .	177
139. Dyeing and bleaching .. .. .	177
140. Hosiery Works .. .. .	177
141. Hides and Skins Industry .. .. .	178
142. Wood Industry .. .. .	179
143. Metal Industry .. .. .	179
144. Ceramics .. .. .	180
145. Pottery .. .. .	180
146. Bricks and Tiles .. .. .	180
147. Chemical Products .. .. .	181
(a) Vegetable Oils .. .. .	181
(b) Matches .. .. .	182
(c) Chemicals, drugs, paints, dyes, etc... .. .	182
(d) Soap, etc. .. .. .	182
(e) Paper, cardboard, etc. .. .. .	182
(f) Others .. .. .	183
148. Food Industries .. .. .	183
149. Dress and Toilet Industries .. .. .	185
150. Furniture Industry .. .. .	186
151. Building Industry .. .. .	186
152. Construction of Means of Transport .. .. .	187

SECTION No.	CHAPTER XI.	PAGE
	<i>Transport, Trade and other Means of Livelihood.</i>	
153.	Transport .. .. .	189
154.	Trade—General .. .. .	190
155.	Bank and Other Credit Institutions .. .. .	192
156.	Trade in Piecegoods .. .. .	195
157.	Trade in Hides and Skins, etc. .. .. .	195
158.	Trade in Chemical Products .. .. .	195
159.	Hotels, Restaurants and Cafes .. .. .	195
160.	Trade in Food-stuffs .. .. .	196
161.	Other Trade .. .. .	196
162.	Other means of Livelihood.. .. .	197
	(a) Public Force .. .. .	197
	(b) Public Administration .. .. .	198
	(c) Professions and Liberal Arts .. .. .	199
	(d) Miscellaneous .. .. .	199

## CHAPTER XII.

*Unemployment.*

163.	General .. .. .	201
164.	Census study of unemployment .. .. .	202
165.	Unemployment according to age-groups .. .. .	202
166.	Proportion of unemployed per mille of unemployed in each age-group and in natural divisions .. .. .	202
167.	Proportion of the unemployed seeking employment .. .. .	203
168.	Proportion of the educated unemployed according to the standard of education .. .. .	203
169.	The Employment Bureau .. .. .	240

## PART III.—CULTURAL.

## CHAPTER XIII.

*Language.*

170.	Object .. .. .	206
171.	Distribution of languages as mother-tongue .. .. .	206
172.	Principal languages of the State .. .. .	207
i.	Urdu .. .. .	207
ii.	Telugu .. .. .	208
iii.	Marathi .. .. .	209
iv.	Kanarese .. .. .	209

SECTION No.	PAGE
173. Tribal Languages .. .. .	210
i. Bhili .. .. .	210
ii. Erkala (Kaikadi) .. .. .	211
iii. Gondi .. .. .	211
iv. Lambadi .. .. .	211
v. Pardhi .. .. .	211
174. Other Indian Languages .. .. .	211
175. Asiatic and African Languages .. .. .	212
176. European Languages .. .. .	212
177. Bilingualism .. .. .	213
178. A Common Language .. .. .	215
179. Script .. .. .	215
180. Effects of Poetry on Language .. .. .	216

## CHAPTER XIV.

*Communities.*

181. General—Distribution of population by communities .. .. .	217
182. Brahmans—The caste system, castes and their position .. .. .	219
183. Harijans (Scheduled castes).. .. .	220
184. Virashaivas or Lingayats .. .. .	222
185. Aryas .. .. .	222
186. Muslims .. .. .	223
187. Christians .. .. .	223
188. Tribes (Aboriginals, Animists)—their position and distribution .. .. .	227
189. Jains, Sikhs and Parsis .. .. .	229
190. Other Communities .. .. .	229
191. Communal Proportion .. .. .	230
192. Social Conditions and Relaxation of Caste Restrictions .. .. .	230
193. Dress .. .. .	231
194. Ornaments and Jewellery .. .. .	231
195. Purdah .. .. .	231
196. Housing .. .. .	232
197. Other Requisites .. .. .	232
198. Marriage Ceremonies .. .. .	232
199. Spare-time Hobbies .. .. .	232
200. Women's Advancement .. .. .	233

## CHAPTER XV.

*Literacy.*

201. The meaning of Literacy .. .. .	234
202. Extent of Literacy .. .. .	234

SECTION No.	PAGE
203. Royal Patronage .. .. .	236
204. Educational Development .. .. .	236
205. Reorganisation of Educational System .. .. .	238
206. Progress of the Educational System during the decade .. .. .	239
207. Female Education .. .. .	240
208. Training of Teachers .. .. .	240
209. Education of Backward Classes .. .. .	240
210. Adult Education .. .. .	240
211. Educational Institutions .. .. .	241
212. Literacy by Age-groups .. .. .	242
213. Literacy in Natural Divisions .. .. .	245
214. Literacy by Community .. .. .	245
215. Literacy by Districts .. .. .	246
216. Literacy in Rural and Urban areas .. .. .	247
217. Literacy in English .. .. .	252
218. Literacy in Urdu .. .. .	254
219. Newspapers, Periodicals and Magazines .. .. .	255
220. No. of Books published during the decade .. .. .	257
221. Libraries and Reading Rooms .. .. .	257
222. Radio Sets .. .. .	257

## APPENDIX.

"Tribal population of Hyderabad Yesterday and Today"---	
by Christoph Von Fürer-Haimendorf. .. .. .	I—LIII

## LIST OF GRAPHS, CHARTS AND MAPS.

No.	PAGE.
1. Map of H.E.H. the Nizam's Dominions .. .. .	Foreword
2. Arts College, Osmania University .. .. .	1
3. Entrance to the Arts College, Osmania University .. .. .	1
4. Variations in Rainfall " By Districts " during the decade from 1341 to 1350 Fasli .. .. .	6
5. Classification of the Total Area in 1351 Fasli (1941-42) .. .. .	10
6. Map of H.E.H. the Nizam's Dominions showing the Production of Different Crops and the Proportionate Distribution of Land in each District with Normal Rainfall 1349-1350 F. .. .. .	12
7. Industrial Activity .. .. .	16
8. The Quinquennial Average Wholesale Prices of Rice, Wheat and Juwar in Hyderabad State .. .. .	23
9. Growth of Population since 1881 .. .. .	34
10. Growth of Population by Sex.. .. .	37
11. The Increase of Population in Telingana and Marathwara from 1881 to 1941. .. .. .	41
12. Distribution of the Population in Hyderabad State by Districts .. .. .	42
13. Growth of Population by Districts since 1881 to 1941 .. .. .	43
14. The Highest and Lowest Population among Taluks .. .. .	45
15. Number of Persons per sq. mile as compared with 1931 .. .. .	46
16. Map of H.E.H. the Nizam's Dominions showing Main Density .. .. .	48
17. Map of Hyderabad Dominions showing Density according to the Cultivated Area 1941 .. .. .	50
18. Growth and Decline of Towns from 1881-1941 .. .. .	57
19. The Rise and Fall of Population by Age-groups .. .. .	72
20. Summation of Ages by Whipple's Method .. .. .	76
21. Chart showing Sex Disparity at various ages during the decade .. .. .	79
22. Number of Females per 1,000 Males at various ages since 1911 to 1941 .. .. .	81
23. The Proportionate number of Males for 1921, 1931 & 1941 .. .. .	84
24. The Proportionate number of Females for 1921, 1931, & 1941 .. .. .	86
25. Map showing Proportion of Females to 1,000 Males in the Districts .. .. .	87
26. General Proportion of Females in the State and Natural Divisions .. .. .	88
27. Ratio of Hindu & Harijan Females to 1,000 Males .. .. .	90
28. Ratio of Marriage and Widowhood among Christian Communities from 1881-1941 .. .. .	94
29. Ratio of Marriage and Widowhood among Tribes .. .. .	96
30. Ratio of Marriage and Widowhood among Muslim Males and Females from 1891 to 1941 .. .. .	98

No.	PAGE
31. Number of Widows and Widowers .. .. .	101
32. Map of India showing Migration .. .. .	106
33. Map of Hyderabad showing Natural Divisions .. .. .	122
34. Chart showing the average number of deaths per annum from various causes .. .. .	125
35. Map of Hyderabad City showing Spleen Index .. .. .	126
36. Photo showing the Place where Malaria was investigated .. .. .	128
37. Maps of H.E.H. the Nizam's Dominions showing Plague Mortality during the period 1306-1350 F. (1897-1941 A.D.) ...	130
38. Map showing Plague Centres .. .. .	131
39. Plague Attacks and Deaths in Hyderabad City and Suburbs from 1321 to 1350 F. (1911-1941 A.D.) .. .. .	132
40. Map of Hyderabad showing Non-Dewani Ilaqas .. .. .	135
41. Variations in the Number of Infirm Persons since 1881 .. .. .	138
42. Blindness according to Sex and Age for 1931 & 1941 .. .. .	141
43. Deaf-Mutism according to Sex and Age 1931 & 1941 .. .. .	143
44. The Incidence of Insanity among Males and Females 1931 & 1941 .. .. .	145
45. General Distribution of the Working Population according to Means of Livelihood .. .. .	155
46. Distribution of Working Population in each Sub-Class of the Principal Means of Livelihood .. .. .	159
47. Distribution of Workers by Principal Means of Livelihood in the Natural Divisions .. .. .	161
48. Proportion of Male and Female Worker in each Sub-Classes of the Means of Livelihood in 1941 .. .. .	165
49. Variation in the Proportion of Agricultural Workers of each status to total Agricultural Workers .. .. .	167
50. Linguistic Map of Hyderabad State 1941 (1350-51 F.) .. .. .	208
51. Social Map of H.E.H. the Nizam's Dominions 1941 (1350-51 F.) .. .. .	218
52. Literacy by Age and Sex for 1921, 1931 & 1941 .. .. .	243
53. Map of H.E.H. the Nizam's Dominions showing Literacy by Districts per hundred of each Sex 1941 (1350-51 F.) .. .. .	246
54. Literacy by Communities 1941 (1350-51 F.) .. .. .	249
55. Literates per mille of each Sex in the Major Communities 1941 (1350-51 F.) .. .. .	251



## FOREWORD.

(i) *The Census*.—The Census of 1941 constitutes the seventh decennial series of systematic population records of H.E.H. the Nizam's Dominions. The dates fixed are not only for Hyderabad State but also for the whole of India. The dates of these decennial censuses and the names of the Census Commissioners of Hyderabad State are given below:—

1. 1881 (17th February) .. Mr. Syed Mohiuddin Ulvi.
2. 1891 (26th February) .. Mr. Mirza Mehdi Khan, M.R.A.C.
3. 1901 (1st March) .. Mr. Mirza Mehdi Khan, M.R.A.C.
4. 1911 (10th March) .. Mr. Md. Abdul Majid, B.A.
5. 1921 (18th March) .. Mr. Md. Rahmatulla (Nawab  
Rahmat Yar Jung Bahadur).
6. 1931 (26th February) .. Mr. Ghulam Ahmad Khan
7. 1941 (1st March) .. Mr. Mazhar Husain, M.A., B.Sc.

For the 1881 census only the Tables volume was prepared. Since 1891, both the Report and the Tables are prepared. The third part, *i.e.*, the *Administration Volume* was started from 1931.

The experience of previous occasions has no doubt been a good deal of help. This time, however, certain alterations were made in the method, which are dealt with in the Census Administration Report. This new and improved method, though it involved certain administrative difficulties, has ensured comparative accuracy in the collection of data. Still, the responsibility and risk Census officials are exposed to cannot better be described than has been done by Professor Karve.\* His remarks are equally, if not more strongly, applicable to Hyderabad:

“The difficulties of having a faultless enumeration of things, persons and events over such an extensive territory as India, are well-known. Physically, financially and administratively, the task involves such a stupendous amount of resources that even the best equipped census and statistical services can only hope to attain a more or less rough approximation to the real situation. The ignorance and prejudice of the enumerated, the inexperience and limited sense of responsibility of enumerator, the lack of sufficient technical accuracy among the classers and sifters, and last, though not least, the complex character of human life in India—these render the responsibilities of the officials very onerous indeed.”

---

\*Karve's "Poverty and Population in India, 1936, P. 25."



(ii) *General Arrangements.*—To start the census work, the district village lists were revised and brought up to date. The State Census Code containing instruction for the taking of the census was prepared, and printed copies were supplied to all the census officers. Instructions on points not provided for in the Code were printed separately and given to the operators to be used during operations. The State Census Act which gave legal authority for all the operations connected with the census, was passed as a permanent Act for all Censuses in future and at any time if the Government so desires. Census forms such as enumeration slips, house list; block and circle list; circle, charge and district summaries; enumeration tickets, etc., were printed and distributed. Besides the forms of statements, registers, slips, etc., the other printed matter which relates to 1941 census is noted below for information:

1. Four Census Memoranda that were issued during census work;
2. The Census Act that was passed;
3. The Census Code of Procedure;
4. Instructions to Enumerators and to the Tabulation Office;
5. District Village Lists;
6. Five Permanent Registers;
7. Census Report, Part I. with Administrative Volume and Notes on Tribes in Hyderabad State; Census Report, Part II. Tables Volume.

(iii) *Census Divisions.*—House numbering was the first step taken for the beginning of the census work. The Municipal Commissioner Hyderabad City and all the Tahsildars were supplied with Hyderabad-made durable colour for this purpose so that the numbers may remain intact till the next census and the people also may use them as identification marks. As a future policy, the Hyderabad City Municipal Commissioner agreed to the following of my proposals:

1. The house-numbering should remain and be used as permanent feature till the next census. The new houses built during this period should bear the adjoining number over one, two, three according to the increase in the new ones.

2. Each street should have its name and its own house numbers and the street should begin and end at the cross roads.

The details of the procedure adopted for taking the census is fully described in a separate volume, the Census Administration Report, 1941. A summary is given below:

A hundred of the numbered houses formed a Census "Block" in charge of an enumerator; 10 to 15 such blocks constituted a "Circle" under a Supervisor. A number of Circles containing 10,000 to 15,000 houses made up a "Charge" under a Charge Superintendent. A town

was treated as a separate charge. Two or three charges being within a taluq was kept under the control of the Taluq Census Superintendent, the Tahsildar. All the taluqs which embrace the area of the district were under the District Census Officer, the First Taluqdar (District Collector). The Municipal Commissioner, Hyderabad City, was the District Census Officer for the City. The exempted jagirs were trusted to adopt similar arrangements in their own jurisdiction. The Dominions were divided into  $\frac{775 (1941)}{789 (1931)}$  Charges,  $\frac{5,249}{7,953}$  Circles and  $\frac{53,951}{78,066}$  Blocks.

(iv) *Staff*.—Charge Superintendents, Circle Officers and Supervisors were invariably Government employees. In villages the enumerators were mostly the Patwaris, Patels and reliable persons such as office clerks. There were 53,951 Enumerators, 5,249 Supervisors and 775 Charge Superintendents in 1941 Census as against 78,066 Enumerators, 7,953 Supervisors and 789 Charge Superintendents in 1931 Census.

I was fortunate in having the 1931 Census experienced hands available not only in the City and districts as enumerators, supervisors, etc., but also in my office staff as my Deputy, Assistant, Office Superintendents, Clerks etc., and thus my work and anxiety were much reduced.

(v) *Programme of Work*.—A regular programme of all the Census operations in full detail was prepared beforehand, and is given in Census Administration Report. This was adhered to rigidly throughout the period and Government was kept in touch by a monthly progress report.

For census recording the enumerators were supplied 50 and 100 slip-pads, and the items included the following information in 27 simple questions: Name, religion, sex, age, civil condition, caste, community, occupation, mother-tongue, birth-place, literacy, extent of literacy, literacy in Urdu and English, employment and unemployment and its period, certain infirmities.

(vi) *Special Enquiries*.—Special enquiries were undertaken into cottage industries, and large scale industries, and the results of the first two are included in the Tables Volume of the Census.

(vii) *Tabulation*.—For the 1941 Census the Government of India decided early in March 1941, to have a limited tabulation for their Provinces, leaving to the States full discretion to have complete census operations if they so wished. Instead, therefore, of the usual complete scheme of 16 Imperial and 2 Provincial Tables, the Provinces and States were asked to send only the data for Imperial Tables I to V, XIII & XIV and the Provincial Tables I & II.

In Hyderabad State, this work was carried out according to a pre-arranged programme and as Hyderabad was the only State in India that carried out all the census tabulation, naturally, more time had to be taken. For sorting and tabulation, nearly a thousand persons have to be employed and accommodated. Two large government buildings were hired from the P.W.D. out of those that had been acquired for the Central Secretariat site, and some temporary sheds were put up in the compounds to accommodate the large establishment of a thousand temporary workers.

(viii) *C. C. I.'s remarks regarding 1941 Census.*—The Census Commissioner for India, in his Census Report Tables Volume has noted, “the 1931 Census coincided with a civil disobedience movement which occasioned a good deal of localised trouble to certain superintendents particularly, however, in Bombay. 1940-41 saw also political influences on the census but in the opposite direction; since whereas the difficulty in 1931 had been to defeat a boycott, the difficulty in 1941 was to defeat an excess of zeal,” which every community was showing to increase their numbers. Thus, the whole population was census conscious.

(ix) *Acknowledgments.*—I express my sincere thanks to one and all, both officials and non-officials for the conscientious manner in which they discharged their duties. The Census work placed a heavy burden on all the district officers and their subordinates, hence I cannot single out any one of them for special thanks.

The employees of the Hyderabad City Municipality did their very best in the most congested area of the Dominions. They and the other office hands deserve great credit for this piece of honorary work. I am thankful to the Municipal and the Police Commissioners and all the Heads of the Departments who willingly lent their office hands and also for all the help they gave to enable the census operations to be carried on smoothly.

I may put it on record that the public were not merely well disposed, but wholeheartedly co-operated with the census staff. During my extensive tours visiting each and every tahsil—Dewani and non-Dewani—(except only 5), throughout the Dominions for giving instructions and looking to the adequate supply of enumeration slips, I was much impressed by the genuine enthusiasm displayed by enumerators and enumerated alike.

Amongst my staff, the Deputy Census Commissioner, Mr. Abu Muhammad, a veteran, who handled the census work for the third time, deserves my thanks and appreciation for the ability and coolness with which he handled the census work. Mr. R. Thomas, Deputy Director of Statistics, as Assistant Census Commissioner, helped me both in my Census and my normal Statistical work wholeheartedly. Mr. Abdul Latif Razvi, Assistant Director of Statistics was posted especially to the

▼

Census branch to get himself fully acquainted with the census work so that the State might have full use in 1951 of the experience gained by him in 1941. It is due to his help and energy that I have been able to prepare this report. On the retirement of Mr. Abu Muhammad, Mr. Mohammad Ali Khan, B.A., the Second Assistant Director of Statistics was put in charge of the Census Tabulation work and he carried out the remaining work in a methodical and systematic manner. Mr. Mohammad Abdul Wali, M.A., B.Sc., the Statistician in my office, helped me by reading through the typed copies and in correcting the figures.

I acknowledge, with thanks, the real help rendered by Mr. R. V. Pillai, Director of the Government Central Press and Stationery Depot, in the supply of stationery and in carrying out in time the very heavy Census press work; the press employees worked day and night.

I must also thank Mr. M. W. M. Yeatts, C.I.E., I.C.S., the Census Commissioner for India, for taking the trouble to visit Hyderabad State, and for his appreciation and encouragement.

Of the clerks, I may mention the names, as a mark of appreciation, of Mr. Ghulam Jilani (Superintendent) and Mr. Sharma (Superintendent) in particular, and Mr. Ghulam Jilani (Accountant), Mr. Ghulam Mahmud (Draftsman), Mr. Satyamurthi (Typist) and Mr. Amjad Husain (Press Clerk), in general.

I also acknowledge the help and guidance that I obtained from the Census Reports of 1921 and 1931 so ably written by the then Census Commissioners. In some cases, I have included some portions of their reports to make the present Census Report more informative and useful.

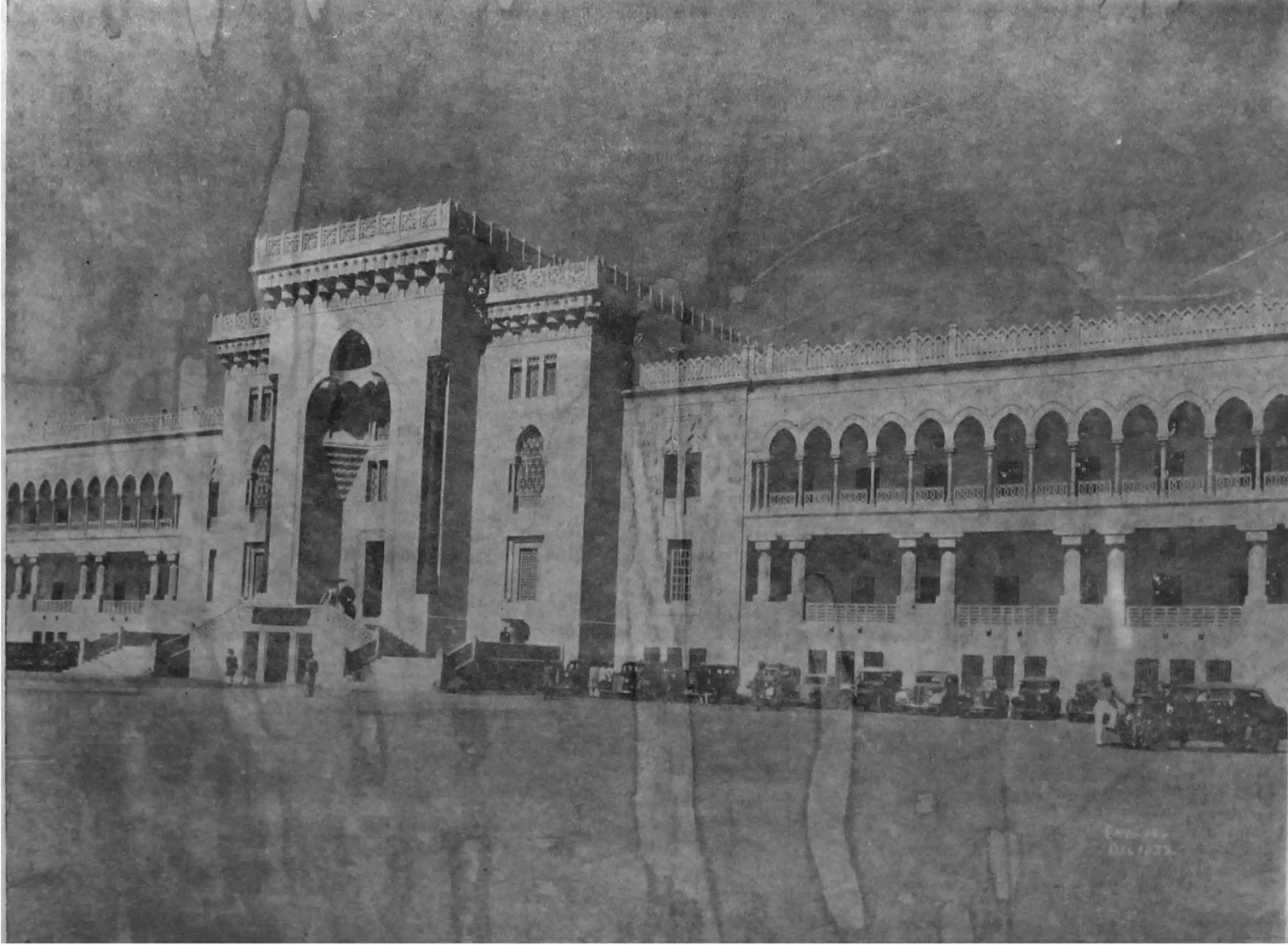
**MAZHAR HUSAIN,**

*Census Commissioner and Director of Statistics.*

*Dated* 24-7-1353 F.  
28-4-1944 A.D.

*To Face Page No. 1.*

**No. 2. Arts College, Osmania University**



*To Face Page No. 1*

**No. 3 Entrance to the Arts College, Osmania University.**

