

# Baluchistan District Gazetteer Seri

---

VOLUMES IV AND IV-A.

---

## BOLAN AND CHAGAI.



Karachi:

PRINTED AT THE "MERCANTILE" STEAM PRESS.

*Price Rs. 3-8-0 or 5 shillings.*

# Agents for the sale of Government publications.

## IN ENGLAND.

Mr. E. A. Arnold, 41 & 43, Maddox Street, Bond Street, London, W.

Messrs. Constable & Co., 16, James Street, Haymarket, London, W.

Messrs. Kegan Paul, Trench, Trubner & Co., 43, Gerrard Street, Soho, London, W.

Mr. Bernard Quaritch, 15, Piccadilly, London.

Messrs. P. S. King & Son, 2 & 4, Great Smith Street, Westminster.

Messrs. H. S. King & Co., 65, Cornhill, & 9, Pall Mall, London.

Messrs. Grindlay & Co., 54, Parliament Street, London, S. W.

Mr. B. H. Blackwell, 50 & 51, Broad Street, Oxford.

Messrs. Deighton Bell & Co., Cambridge.

## ON THE CONTINENT.

Messrs. R. Friendlander & Sohn, Berlin, W. N. Carlstrasse, 11.

Mr. Otto Harrasowitz  
Mr. Karl Hiersemann } Leipzig.

Mr. Ernest Leroux, 28, Rue Bonaparte, Paris.

Mr. Martinus Nijhoff, Hague, Holland.

Mr. Rudolf Haupt, Halle A—S, Germany.

## IN INDIA.

Messrs. Thacker, Spink & Co., Calcutta & Simla.

Messrs. Newman & Co., Calcutta.

Messrs. R. Cambay & Co., Calcutta.

Messrs. S. K. Labiri & Co., Calcutta.

Messrs. Higginbotham & Co., Madras.

Messrs. V. Kalyanarama Iyer & Co., Madras.

Messrs. G. A. Natesan & Co., Madras.

Messrs. S. Murthy & Co., Madras.

Messrs. Thompson & Co., Madras.

Messrs. Temple & Co., Madras.

Messrs. Combridge & Co., Madras.

P. R. Rama Iyer & Co., Madras.

Messrs. A. R. Pillai & Co., Trivandrum.

Messrs. Thacker & Co., Ltd., Bombay.

Messrs. A. J. Combridge & Co. Bombay.

Messrs. D. B. Taraporevala, Sons & Co., Bombay.

Mrs. Radhabai Atmaram Sagoon, Bombay.

Mr. Sunder Pandurang, Bombay.

Messrs. Gopal Narayan & Co., Bombay.

Superintendent, American Baptist Mission Press, Rangoon.

Rai Sahib M. Gulab Singh & Sons Mufid-i-Am Press, Lahore.

Mr. N. B. Mathur, Superintendent, Nazair Kanun Hind Press, Allahabad.

Messrs. A. M. & J. Ferguson, Ceylon.

BALUCHISTAN DISTRICT GAZETTEER SERIES.

---

VOLUME IV.—TEXT.

**BOLAN PASS  
AND NUSHKI RAILWAY DISTRICT.**

---

BY

R. HUGHES-BULLER, I. C. S.,

ASSISTED BY

RAI SÁHIB DIWÁN JAMIAT RAI,

*Extra Assistant Commissioner.*



Larachi:

PRINTED AT THE "MERCANTILE" STEAM PRESS.

---

1906.

## PREFACE.

That portion of the Bolán Pass and Nushki Railway District which is included in Agency Territories is alone dealt with in the accompanying volume. An account of the Kúrds, Sahtakzais and other tribes, which are outside the tahsildár's jurisdiction for political purposes, is included in the Gazetteer of Sarawán.

Most of the matter included in the volume is original, but, in dealing with the two most important subjects, viz., the distribution of the Kirta lands and the levy service, much assistance has been derived from reports written at various times by Major H. M. Temple, formerly Political Agent in Kalát. The constant disputes which have arisen over the Kirta land, and the magnitude of the levy service in such a relatively small area constitute the justification for the length at which these two subjects have been treated. It is hoped that the statement in Volume B, showing the actual distribution made of the Kirta land in October 1905, will be particularly useful to the District Officers.

As in the case of Quetta-Pishín, the material for the volume was collected by Rai Sáhib Diwán Jamiat Rai who personally visited the Bolán on more than one occasion. He had previously acquired an intimate acquaintance with local conditions when serving as Native Assistant in the Bolán in 1897. I take this opportunity of tendering him my acknowledgments for the great assistance he has rendered me. I am also indebted to the local officials for the promptness with which the numerous references, which had to be made, have been attended to.

The draft has been examined and passed by Major H. L. Showers, C. I. E., Political Agent, Kalát, whose courtesy in placing his office records at my disposal I also have to acknowledge.

QUETTA, 1905.

R. HUGHES-BULLER.

# TABLE OF CONTENTS.

## BOLAN PASS AND NUSHKI RAILWAY DISTRICT.

### CHAPTER I.—DESCRIPTIVE.

#### PHYSICAL ASPECTS.

	Pages.
Situation, dimensions and origin of name ... ..	1
Boundaries ... ..	1b
Configuration ... ..	2
Hills ... ..	3
Rivers ... ..	5
The Bolán river ... ..	1b
The Mushkáf ... ..	7
Scenery ... ..	1b
Geology ... ..	1b
Botany ... ..	8
Fauna ... ..	9
Climate, temperature and rainfall ... ..	1b

#### HISTORY.

The connection of the Bráhuís with the Pass ... ..	11
The first Afghán war ... ..	12
Extension of British control ... ..	13
The second Afghán war ... ..	15
Cession of the Pass to the British Government ... ..	16
Construction of railway ... ..	17
Cession of jurisdiction on the railway ... ..	1b
Administrative arrangements and changes ... ..	18
Archæology ... ..	19

#### POPULATION.

Ethnographical history ... ..	1b
Census ... ..	20
Density and villages ... ..	1b
Kirta village ... ..	1b
Growth of population ... ..	2f

POPULATION—*contd.*

	Pages.
Migration ... ..	21
Immigrants ... ..	22
Age statistics, vital statistics, infant mortality and infirmities	ib
Comparative numbers of the sexes and civil condition	23
Marriage ceremonies	24
Bride-price and dowry	25
Marriage expenses	ib
Divorce	ib
Widows	26
Penalties for adultery	ib
The status of women and rights to property	27
Language	28
Races and tribes	ib
The Kuchiks	ib
Religion	31
Occupations	32
Social life	33
Custom of hospitality	ib
Co-operation among the tribesmen	ib
Manner of spending the day by headmen and cultivators	34
Food	ib
Male dress	35
Female dress	36
Dwellings	ib
Disposal of the dead	37
Amusements and festivals	ib
Shrines	ib
Names and titles	38
Rules of honour	39

## CHAPTER II.—ECONOMIC.

## AGRICULTURE.

General conditions	40
Soils	ib
Rainfall and system of cultivation in relation thereto	41

TABLE OF CONTENTS.

III

AGRICULTURE—*contd.*

	Pages.
Population engaged in and dependent on agriculture ... ..	42
Seasons of the year, sowing and harvest times ... ..	<i>ib</i>
Principal crops ... ..	43
Wheat ... ..	<i>ib</i>
<i>Zurra</i> t ... ..	45
Manure, outturn and rotation ... ..	46
Fruit and vegetable gardens ... ..	<i>ib</i>
Extension and improvement in cultivation ... ..	47
Agricultural implements ... ..	48
Agricultural Advances ... ..	49
Agricultural indebtedness ... ..	50
Domestic animals... ..	51
Pasture grounds and difficulties of feeding cattle ... ..	<i>ib</i>
Cattle diseases ... ..	<i>ib</i>
Sources of irrigation ... ..	52
Division of water ... ..	<i>ib</i>

RENTS, WAGES AND PRICES.

Rents ... ..	53
Produce rents, methods of distribution of the grain heap ... ..	<i>ib</i>
Wages ... ..	54
Tending cattle ... ..	55
Village servants ... ..	<i>ib</i>
Prices ... ..	56

WEIGHTS AND MEASURES.

Measures of weight ... ..	<i>ib</i>
Measures of grain ... ..	<i>ib</i>
Other measures of weight ... ..	57
Linear measures ... ..	<i>ib</i>
Superficial measures ... ..	<i>ib</i>
Measure of time ... ..	<i>ib</i>
Currency ... ..	59

MATERIAL CONDITION OF THE PEOPLE ... ..	<i>ib</i>
---	-----------

## MINES AND MINERALS.

	Pages.
Coal ... ..	59
Petroleum ... ..	60
Sulphur ... ..	61
Building stone ... ..	ib
Cement, paint, &c. ... ..	ib
<i>Silājūt, Br. Khalmolt, Bl. Mehmai</i> ... ..	62
ARTS AND MANUFACTURES ... ..	ib

## COMMERCE AND TRADE.

Local trade ... ..	63
--------------------	----

## MEANS OF COMMUNICATION.

Railways, their early history ... ..	65
The Mushkáf-Bolán Railway ... ..	ib
The Quetta-Nushki Railway ... ..	ib
Roads ... ..	66
Transport ... ..	67
Telegraph offices ... ..	68
Post offices ... ..	ib
FAMINE ... ..	ib

## CHAPTER III.—ADMINISTRATIVE.

Administration and Staff ... ..	69
Application of enactments ... ..	70
Administration of civil and criminal justice ... ..	ib
Civil justice ... ..	72
Criminal justice ... ..	73
Jirga cases ... ..	74
The advantages and disadvantages of the <i>jirga</i> system ... ..	75
Fanatical outrages ... ..	76
Registration ... ..	77
FINANCE ... ..	78

## LAND REVENUE.

Early history ... ..	79
Imposition of revenue in 1892 ... ..	ib
Land tenures, origin and character of tenants and division of land ... ..	80



TABLE OF CONTENTS.

v

LAND REVENUE—*contd.*

	Pagea.
Tenants ... ..	81
Early disputes about the land in Kirta ... ..	<i>ib</i>
Measurement of the land ... ..	84
Water for <i>niám digár</i> lands ... ..	<i>ib</i>
Periodical distribution of land and water ... ..	<i>ib</i>
Actual division of the Drabbi land in 1905 ... ..	87
Division of land among the Bangulánis ... ..	88
Joint possession of dry-crop land ... ..	89
Size of holdings ... ..	<i>ib</i>
Government land and water ... ..	<i>ib</i>

MISCELLANEOUS REVENUE.

Salt... ..	90
Excise ... ..	91
Intoxicating drugs ... ..	92
Country spirits and rum... ..	<i>ib</i>
Spirituous and fermented liquors ... ..	93
Consumers, consumption and aggregate revenue ... ..	<i>ib</i>
Stamps ... ..	<i>ib</i>
Income tax ... ..	<i>ib</i>
LOCAL FUNDS ... ..	94

PUBLIC WORKS.

Important works ... ..	95
------------------------	----

LEVIES, POLICE AND JAILS.

Levies ... ..	96
Original arrangement with the Khán and chiefs ... ..	<i>ib</i>
Arrangements under the treaty of 1876 ... ..	97
Telegraph service... ..	<i>ib</i>
Postal service ... ..	<i>ib</i>
Abolition of <i>sung</i> and <i>badrakka</i> and re-organisation of levies ... ..	98
Shahwáni sardár's claim to a share in the <i>sung</i> negotiated ... ..	99
Changes made since 1890 ... ..	<i>ib</i>

LEVIES, POLICE AND JAILS—*contd.*

	Pages.
Distribution of <i>badrakka</i> and <i>sung</i> ... ..	101
Strength of levies in March 1904 ... ..	ib
Duties of levies ... ..	102
Responsibility of the levies for the protection of telegraph wire ...	ib
Police ... ..	103
Cognizable crime ... ..	104
Cattle pounds ... ..	ib
Jails ... ..	ib
EDUCATION ... ..	ib

## MEDICAL.

Principal diseases and their causes ... ..	105
Epidemics ... ..	ib
Plague precautions ... ..	106
Vaccination and inoculation ... ..	ib
Method of inoculation ... ..	ib
Indigenous remedies ... ..	107
Village sanitation and water supply ... ..	108
Working of the pice packet system of sale of quinine ..	ib
SURVEYS ... ..	ib

## CHAPTER IV.—MINIATURE GAZETTEER.

Kolpur ... ..	109
Mach ... ..	ib
Mushkaf Railway Station ... ..	111
Rindli or new Rindli ... ..	ib
Bibliography ... ..	113
Appendix I. Alphabetical list of common trees and plants ...	116
Appendix II. Genealogical table of the Banguláni Kuchiks ...	125
Appendix III. Alphabetical list of Agricultural implements ...	126
Appendix IV. Alphabetical list of agricultural, revenue and shepherd's terms ... ..	128
Appendix V. Translated purport of the award of the <i>sháhi jirga</i> held at Quetta on July 27, 1891, in the matter of the dispute about land in Kirta ... ..	141

## **APPENDICES.**

## CHAGAI.

## APPENDIX I.

## NORTHERN BOUNDARY OF THE CHAGAI DISTRICT.

Extract from the translation of joint agreement executed on the 13th May 1896 by Captain A. H. McMahon, British Commissioner and Muhammad Umar Khán, representative of His Highness the Amír of Afghánistán, joint Commissioners on the Indo-Afghán Boundary Commission, Baluchistán Section.

(The portion of the boundary between Domandi and the peak at the head of the Inzargai and Talai *nullahs* lies in the Zhob and Quetta-Pishín Districts).

From here the boundary line runs in a south-westerly direction for some 12 miles along the crest of the water-shed which divides the water draining to the west into the upper branches of the Kurram and Goari *nullahs*, and that draining to the east into the Shorarúd and Singbur *nullahs* as far as boundary pillar CXLIII, erected on a prominent peak situated on the same water-shed at the head of the most eastern of the upper branches of the Tirkashi *nullah*. From here the boundary line runs in a straight line towards and slightly southwards, crossing the head of the Tirkashi *nullah* to boundary pillar CXLIII (a) erected on a prominent peak commonly known as Dék at the head of the Tirkashi *nullah*. Continuing in the same straight line the boundary line crosses the head of the Dilshád *nullah* to boundary pillar CXLIII (b) erected on a prominent peak at the head of the Kárawán Kush and Jori *nullahs*. From here the boundary line still continues in the same straight line and, crossing the Goari Mándá *nullah* at a point where boundary pillar CXLIII (c) has been erected, runs to boundary pillar CXLIV, erected on a prominent peak on the crest of the water-shed of the Sarlat range and immediately south of the head of the *nullah* in which is situated the Mián Haibat Khán Ziárat and which flows eastwards into the Goari Mándá. This peak also happens to be situated exactly on the straight line between boundary pillar CXLIII, and a point two miles due south of the top of the low hill close to and south of the Káni well.

*Clause III.*—We have jointly agreed that from boundary pillar CXLIV, erected on the crest of the main water-shed of the Sarlat range, the boundary line runs, as shown in the attached map, in the same straight line westwards and slightly southwards to a point two miles due south of the top of the low hill which is close to and south of the Káni well. At this

## CHAGAI.

## APPENDIX I—(contd.)

point boundary pillar CLVII has been erected. This straight line has been further marked by the following boundary pillars as shown in the map\* attached, i. e., boundary pillar CXLV, which has been erected at a short distance from boundary pillar CXLIV, on a slightly lower ridge of the Sarlat range; boundary pillar CXLVI, erected about two miles further down on the western slopes of the Sarlat; boundary pillar CXLVII erected on the north slope of a small prominent isolated hill, known as Kamar Koh at the foot of the Sarlat; boundary pillar CXLVIII, CXLIX, CL, which have been erected on ridges of the sandhills which lie between the foot of the Sarlat range and the Lora river; boundary pillar CLI erected in the plain about  $1\frac{1}{4}$  miles due east of the Lora river, boundary pillar CLII erected on the west bank of the Lora river, boundary pillar CLIII erected about 100 yards north of the Bulandwál tower; boundary pillars CLIV and CLV erected on the plain; and boundary pillar CLVI erected at a point about 400 yards south of Partos Náwar, where the boundary line enters the sandhills of Régistán. Beyond this point, as far as boundary pillar CLVII, boundary pillars have not been erected owing to the sand. This straight line, from boundary pillar CXLIV to boundary pillar CLVII, passes about one mile south of the hill known as Jari Mazár, about two miles south of Siáh Sang, about  $7\frac{1}{2}$  miles south of the Sayd Bus Ziárat and about  $1\frac{1}{4}$  miles south of the Páprang Band. After entering the sandhills of Régistán at boundary pillar CLVI, some 400 yards south of Partos Náwar, the boundary line runs in a straight line through sandhills to boundary pillar CLVII, which, as before mentioned, has been erected at a point two miles due south of the top of the small hill close to and south of the Káni well. From boundary pillar CLVII, the boundary line which we have jointly agreed upon, runs in a straight line westwards and slightly northwards to the Shibián Kotal. This line crosses the north portion of the Lora Hámún. Boundary pillar CLVIII has been erected on the line at about  $1\frac{1}{4}$  miles north of the Kunzai hill which is situated on the west bank of the Lora Hámún. The boundary line thus passes to the north of the Gazechá wells. Boundary pillars CLIX and CLX erected on high prominent peaks, mark where this line crosses the mountain between the Lora Hámún and the Shibián Kotal. Boundary pillar CLXI has been erected at the crest of the Shibián Kotal and is on the crest of the watershed dividing the water of the Shand nullah on the north from the water of the Shibián nullah on the south which flows into the Lora Hámún. From the Shibián Kotal the boundary line, which we have jointly

---

\* Map not reproduced.

## CHAGAI.

## APPENDIX I—(contd.)

agreed upon, runs westwards, as shown in the attached map along the south water-shed of the Shand *nullah* to the head of that *nullah* and thence follows the crest of the main water-shed which divides the *nullahs* which flow northwards through Pasht-i-Koh from the Telarán, Mahián, Buznai and other *nullahs* and their branches which flow southwards. The boundary line follows this well-defined water-shed as far as the Mazari Kotal, to boundary pillar CLXII, which has been erected on a peak on the crest of the same water-shed just south of the Mazari Kotal. Between the Shibián and Mazari Kotals the water-shed which forms the boundary is naturally well defined by a continuous line of high mountains with prominent peaks, and it was considered unnecessary to further demarcate it.

*Clause IV.*—We have jointly agreed that the boundary line, from boundary pillar CLXII, near Mazari Kotal, runs for about  $7\frac{1}{2}$  miles along the same water-shed, i. e., that dividing the Mazari, Kushtagán, and other *nullahs* on the south, from the Barábcháh *nullah* on the north, as shown in the attached map, as far as boundary pillar CLXIII, which has been erected on a prominent peak on that water-shed. The boundary line then leaves this main watershed and runs north-west for about  $3\frac{3}{4}$  miles along the crest of a spur, which separates the main, i. e., northern, branch of the Barábcháh *nullah*, from the southern branches as far as boundary pillar CLXIV, which has been erected on a prominent peak at the end of that spur. From here the boundary line runs in a straight line westwards and slightly northwards for about 29 miles to boundary pillar CLXXII, which has been erected at a point six miles due south of Robát. Along this straight line, to mark the boundary, boundary pillars CLXV, CLXVI, CLXVII, CLXVIII, CLXIX, CLXX, CLXXI have been erected at prominent points, as shown on the attached map.

From boundary pillar CLXXII, the boundary line turning westwards and slightly southwards, runs in a straight line, except for a short distance at Jilijil, as noted below, to a point 12 miles due north of Amír Cháh, through boundary pillars CLXXIII, CLXXIV, CLXXV and CLXXVI, as shown on the map attached. Boundary pillar CLXXV is situated on a hill known as Par close to and north of the Cháh-i-Marak. Boundary pillar CLXXVI is at the foot of the southern slopes of the hill known as Lorai, which is on the north bank of the *nullah* known as Cháh-i-Marak *nullah*. From boundary pillar CLXXVI, the boundary line turns then due south and runs to a distance of half a mile to the south of the bed of the large *nullah* in which Soru and Jilijil are situated. The Soru water is

## CHAGAI.

## APPENDIX I—(contd.)

thus left on the British side and the Jilijil water on the Afghán side of the boundary line. The line then runs along the sandhills at a distance of  $\frac{1}{2}$  mile to the south of the bed of the above *nullah* to a point near Khaisan Lok, where the main road from Jilijil to Darband leaves this *nullah*. Here the boundary line joins and thence runs along the straight line shewn between boundary pillar CLXXII and boundary pillar CLXXXVII erected at a point 12 miles due north of Amír Cháh. This line passes through the north slopes of a prominent sandhill known as Khaisan Lok and passes about  $2\frac{1}{2}$  miles south of the top of the Kamarghar hill, about three miles south of the top of Gidan Koh, about  $2\frac{1}{2}$  miles south of the top of Harag hill, about 8 miles north of Darband, and about seven miles north of the top of the Gharibo hill. Owing to the heavy sand along its course it has not been possible to demarcate the boundary line beyond Soru by boundary pillars.

*Clause V.*—We have jointly agreed that from boundary pillar CLXXXVII erected at the point 12 miles due north of Amír Cháh, the boundary line runs in a straight line north-west, as shown in the attached map for about 97 miles to the top of the Koh-i-Malik Siáh. As this boundary line runs through sand and desert, it has been considered unnecessary to demarcate it for some distance by boundary pillars. It passes about 22 miles north of the Koh-i-Dalíl, about  $20\frac{1}{2}$  miles north of Drána Koh, about 10 miles north of the Garuk-i-Gori hill, about  $16\frac{1}{2}$  miles north of the Kirtaka spring. It passes about  $1\frac{1}{2}$  miles south of the most southern point of the God-i-Zirreh, about 8 miles south of the ruins of five old buildings, which are situated in a row, a short distance to the south of the Shélag *nullah* and commonly known as Gumbaz-i-Sháh about 13 miles south of the Ziárat-i-Sháh-i-Mardán and ruins known as Godar-i-Sháh on the north bank of the Shélag *nullah*. Between the point where this boundary line leaves the sandhills and the top of the Koh-i-Malik Siáh, the following boundary pillars have been erected on this straight line, as shown in the attached map, i. e., boundary pillars CLXXVIII, CLXXIX, CLXXX, CLXXXI and CLXXXII on the plain; CLXXXIII on a conspicuous ridge of the low hills south of the Robát *nullah*, CLXXXIV on the south bank of the Robát *nullah*, CLXXXV on the north bank of the Robát *nullah*. From there the line crosses the eastern slopes of the Koh-i-Robát and runs up to boundary pillar CLXXXVI, which has been erected on the top of the Koh-i-Malik Siáh. This line crosses the Robát *nullah* just above the lower Robát springs and leaves the upper Robát spring some  $2\frac{1}{2}$  miles on the south of it.

## CHAGAI.

## APPENDIX II.

The following account of the Botany of the District is extracted from the "Botany of the Afghán Delimitation Commission."\*

"The most interesting plants found on the hills and on rock-formations were:—*Stocksia Brahuica*, a thorny shrub or small tree, first collected between Khanak and Panj-pai on the 24th of September, and subsequently more or less frequently as far as the Helmand. In its autumnal garb, when leafless, and covered with its brilliantly coloured inflated fruit, it was very showy. It is called by the natives *Koh-tor*, or the mountain peach, no doubt from the attractive colouring of the fruit. *Pistacia Terebinthus*, var. *mutica*, was occasionally seen on limestone, occurring in some numbers. This is the only indigenous tree of Balachistán that grows to any size; several I measured were over 9 feet in girth at 6 feet from the ground; but in height none were over 20 feet. *Zygophyllum atriplicioides*, a shrub from 4 to 6 feet in height, with fleshy leaves, bright yellow flowers, and curious winged fruit, was seen everywhere, from the stony bases of the hills into the gravel plains. *Perowskia abrotanoides*, a very attractive Labiata, forming a close bush 3 to 4 feet high, was general among the rocks; *Periploca aphylla* and two species of *Ephedra*. *Ephedra pachyclados*? was the common one, being very profuse amongst broken rock, boulders, etc., as well as on the gravel plains. The native name for the *Periploca* and the two species of *Ephedra* is *hum* or *huma*, the natives not distinguishing between them. *Tamarix gallica* is a large shrub, the presence of which in quantity and size would, I think, indicate water at no great depth. Further, *Pteropyrum Aucheri*, *Rhazya stricta*, *Stellaria Lessertii*, *Lactuca orientalis*, *Anabasis* sp, *Pennisetum dichotomum*, *Euphorbia osyridea*, *Astragalus hyrcanus*, *Calligonum comosum*, inhabit this region at the base of the hills, and extend thence over the gravel country.

"On the gravel and clay plains the vegetation was extremely sparse and stunted; among the prevailing plants, *Alhagi Camelorum* was generally spread over the country, and in some favoured localities it grew in luxuriance and dense masses, through which it was hard to get our horses to go owing to its numerous objectionable spines. This shrub is usually from 1 to 2 feet in height, occasionally as much as 3. The ordinary term here for the plant is "Camelthorn," as it is one of the chief sources of supply of fodder for these animals. In certain seasons it yields a manna. *Peganum Harmala*, *Sophora mollis*, *Sophora Griffithii*, and two species of *Heliotropium*.

\* *Transactions of the Linnean Society, Second series—Botany, Volume III, 1887.*



## CHAGAI.

## APPENDIX II—(contd.)

were more or less frequent; and where saline matter impregnated the soil, the following shrubs were often in great luxuriance, *Salsola Kali*, *Salsola arbuscula*, *Salsola foetida*, and several others, with *Halanthium* sp., *Halocharis sulphurea*, *Haloxylon salicornicum* and *H. Griffithii*.

“On the sand-dunes and between the hillocks formed by the sand-waves vegetation was more general and of stronger growth than one would have expected to find on first seeing this formation. This is no doubt due to the deeper layers of the sand being able to retain moisture, down to which the roots easily penetrate through the soft superstructure. The characteristic shrub, often almost a tree in size, is *Haloxylon Ammodendron*, which is the *Tá-gaz* of Baluchistán, and its smaller branches yield the best camel-fodder of the country, and, unlike the Tamarisks, the camels can live continuously upon it without its impairing their health. In general appearance it resembles light-green Tamarisk, hence its native name; but it is at once distinguishable by its pendulous branches and grey white stems; hence the European name White Tamarisk. Although this shrub is found in all directions, it certainly seems to prefer, and grows in greatest luxuriance on these sand hills. *Tamarix macrocarpa* and other large shrubby species were common. At Omar-sha (Umar Sháh) where we encamped on sand hills, there were some trees, probably planted, of *Tamarix articulata* with trunks, 9 feet in girth and over 30 feet in height, and associated with them were some trees of *Tamarix macrocarpa*, from 4 to 6 feet in circumference, evidence of the size this species may attain in a favourable locality. The ordinary native name for the latter is *Kirri*; and this term was equally applied to *T. articulata*, although the two species were recognized as different. *Tamarix articulata*, having no special native name here, leads one to surmise that it is not indigenous to this part of the country. At Zaru (Zahro), close to our encampment, were some large bushes of *Lycium barbarum*, almost devoid of foliage, but covered with bright red fruit, very like small capsicums. Here we lost several camels from no known cause, though all those found dead were lying near these bushes, and had been eating greedily of the berries. I opened several camels, but the post-mortem showed no symptoms of irritant poisoning, yet there was nothing I could detect in their paunches except the berries. From the camels having died so suddenly I suspected narcotic poisoning, and yet a *Lycium*, although nearly allied to a poisonous genus, is not supposed to be itself poisonous. I carefully examined the whole country round, and there was nothing else they could have eaten

## CHAGAI.

## APPENDIX II—(contd.)

of a poisonous nature. The natives declared the *Lycium* was not poisonous and subsequently I often saw camels browsing on this shrub without any ultimate evil effects.

“In some localities the sand-dunes were covered with *Euphorbia cheirolepis*; a very elegant species, which still, late though the season was, maintained its green foliage. *Tribulus alatus* covered the tops of the sand-dunes in many places with a sward. *Cyperus pungens* at this season only existed in numerous leafy tufts, and very little of the fruiting heads were obtained, though sufficient for identification. *Convolvulus erinaceus* was not uncommon. Peculiar looking balls formed of a prickly fruited shrub, *Agrophyllum latifolium*, with few or no leaves were noticed rolling about, driven by the winds hither and thither over the flat clay plains (or *Pat*) occasionally accumulating into heaps. This shrub grows in loose sand, and as it is very leafy it is easily lifted out of its position by the wind and, being driven out, it takes the form of a ball, which is often increased in size by coming in contact with other similar plants. It was soon dubbed “the wanderer”; the natives call it the “spinning wheel,” in allusion to this peculiarity. It was curious to note the condition of the roots of the plants that live in these beds of pure sand; some, like the *Haloxylon*, thrust their roots so deeply into the sand as to anchor themselves in the solid ground beneath; others like *Euphorbia*, with slight stems, little affected by the wind, do not require to be so firmly fixed, and do not root so deeply; grasses and sedges have their fibrous roots greatly lengthened, and develop a spongy tissue as thick as a goose-quill. These spongy enlargements serve two purposes, one for holding fluid for future requirements, and the other for maintaining the position of the plants, each root acting as an individual anchor. The same plants not growing in this loose sand did not possess this peculiar development of their roots. Indeed all the plants that occupy these sandy dunes have a hard struggle for existence; not only have they much to do to keep themselves in position on account of the wind, but when sand is heaped upon them they have to learn to keep themselves alive under the superimposed weight and at the same time to fight their way through it. Furthermore the sand blown on them during summer is hot and dry, so hot and dry that unless these plants are capable of collecting and maintaining a supply of moisture, they must inevitably perish from drought. On other occasions their surrounding medium may be suddenly removed by wind, leaving them to be blown about with the chance of being utterly destroyed before

## CHAGAI.

## APPENDIX II—(contd.)

they can be again partially covered with sand and thus afforded the means for supporting life.

"In stream-beds amongst thickets of Tamarisk, where there were perennial streams, as at Kaiser and Mamu, the *Oleander* was met with. It is well known to the natives, and said to be common in such localities all over the country. This shrub was very destructive to camels, especially when it was spread through the Tamarisk thickets, as these animals never seem to learn not to browse on it. The native name is *jaur*, a corruption of the Persian word for poison. Climbing over these shrubs *Clematis orientalis* was in great luxuriance; and on the shady side of some rocks a variety of *Mentha sylvestris*, growing seven feet high, was common. *Andropogon laniger*, a lemon-scented grass, formed turf in the vicinity of the stream, as also *Juncus maritimus*. *Erianthus Ravennæ*, the *munj* of the Punjab, was occasionally observed in great clumps. Where the stream spread out into broader shallows, flooding the low land occasionally, *Arundo Donax* occurred together with *Phragmites communis*, forming great beds; the latter, where the water was brackish and the soil saline, was extremely dwarfed with rigid and sharp-pointed leaves. In the Tamarisk groves a large purple-flowered *Orobanche* was occasionally seen, perfect in form and colour, but dried to a cinder, so that it could not be preserved, as on the slightest touch it crumbled into dust.

"The fodder supplied to us for our cattle during our journey consisted of the crushed straw of wheat and barley and of the stems of millet (*sorghum*). Occasionally, in addition to these, the stems of *Pennisetum dichotomum* were also served out. These stems were from 1 to 3 feet in length, resembling miniature bamboos; and thus they were termed in camp. Notwithstanding their hardness, they were greedily eaten by our horses, much to our amusement and wonder. The natives call this grass *Barshonk*, and it grows on the stony formation at the bases of the hills only.

"At Gaz-i-cha we encamped in a great meadow of *Eragrostis cynosuroides*, which was here unmixed with any other grass. It was called *kirthag*, and grew in deep pure sand. Such a locality was looked upon as an oasis of plenty for our cattle and this particular grass was considered very fattening, though had any of our horse-keepers supplied us with it in India, the result, I fear, would have been a general commotion in the establishment. *Aristida plumosa* is highly valued and an excellent fodder, growing in luxuriance on the sand hills of the desert, where usually no other grass is to be seen. It occurs in small separate tufts, from 4 to 6

## CHAGAI.

## APPENDIX II—(contd.)

inches in height, and is called *mazj*. Sheep are especially fond of it. Several creeping species of *Æluropus*, were often mistaken by members of the mission for *Cynodon Dactylon*, the *dub* of India. These were profuse, especially on the saline plains. *Cynodon* I did not see in Baluchistán, except at Quetta, where it was in abundance on the sides of irrigation channels. Between Bozdan, Mamu and Galicha, from the numerous dry leaves found driven about by the wind, a species of *Ferula* was detected in these gravel plains. After much seeking one leaf was at last discovered attached to a root-stock. On digging this up, there was no doubt, from its general appearance and the odour its fractured surfaces emitted, that it was the root of a species yielding *Asafætida*. Not a single stem was obtainable, but, from the quantity of leaves seen, the plant must be abundant in this locality. The curious thistle-like umbellifer, *Pycnocycla Aucheriana*, was not rare, chiefly present in stony ground; happily sufficient material was collected for its accurate determination. It produces a yellowish gum-resin, and the root stock, when employed as fuel, emits a very offensive odour. One specimen only of the rare Crucifer *Cithareloma Lehmanni* was obtained in the desert between Nushki and Sanduri."

## CHAGAI.

## APPENDIX III.

List of common trees and plants in the Chágai District.

Name in Bráhui and Baluchi.	Scientific name.	Locality where found.	Brief remarks as to uses, etc.
Aghut ...	<i>Sonchus Oleraceus.</i>	In ravines ...	Fodder for camels, sheep and goats. In times of scarcity also eaten by poorer classes.
Alonj ...	...	Hills ...	Fodder for sheep and goats.
Anjír ...	<i>Ficus virgata</i> ...	do. ...	Fruit.
Archin ...	<i>Prunus Eburnea.</i>	do. ...	Wild almond.
Askaw ...	...	In sands only ...	A fodder for camels, sheep and goats.
Barshonk ...	...	Plains and river beds.	Fodder for horses, cattle and donkeys.
Bíbíbutau ...	...	In beds of hill torrents.	A thorny plant eaten by camels.
Boimádrán ...	<i>Achillea millefolium.</i>	in the vicinity of Nushki.	Dried flowers used as drug for fever and stomach-ache.
Borko ...	...	River beds ...	Fodder for camels, sheep and goats.
Brinjásk ...	...	Hills ...	Infusion used as medicine for cough.
Bunnu ...	...	River beds ...	Fodder for cattle.
Chambarak <i>Chamar Bl.</i>	<i>Malcolmia Africana</i>	Dák plains in Nushki.	Green plant used as vegetable, dry as fodder for cattle.

## CHAGAI.

## APPENDIX III—(contd.)

Name in Bráhui and Baluchi.	Scientific name.	Locality Where found.	Brief remarks as to uses, etc.
Chárko ...	...	In the skirts of hills & ravines.	Fodder for camels, sheep and goats.
Dánichk ...	Plantago Amplexicaulis.	...	...
Drug ...	Eragrostis cynosuroides	In salt land especially, in Kuchaki Cháh.	An excellent fodder for cattle.
Gadago ...	...	In Dák plain ...	Fodder for camels, sheep and goats.
Gandarém ...	...	In fields ... ..	Infusion mixed in <i>ghí</i> is given to children suffering from fever.
Garbust ...	Lepidium Draba..	In wheat and barley fields.	Green used as vegetable and dry as fodder for cattle.
Gehmard ...	...	Hills ... ..	Fodder for sheep and goats.
Gét ... ..	Salix acmophylla (willow).	...	...
Gidanguanjak.	...	Hills ... ..	Fodder for all animals except horses.
Giyáháp Gi-yáháb, Bl.	...	In wheat and barley fields.	An excellent fodder for cattle.
Gomázig ...	...	In plains ... ..	Fodder for cattle.
Gwan ...	Pistacia Cabulica.	In Chágai and Khaisár hills.	Fruit eaten by people

## CHAGAI.

## APPENDIX III—(contd.)

Name in Bráhuí and Baluchi.	Scientific name.	Locality where found.	Brief remarks as to uses, etc.
Haiyarres ...	...	In plains ...	Cooling drink made by mixing the dried leaves with milk.
Hashsha, <i>Hashshag</i> . Bl.	...	In plains ...	Fodder for sheep, goats and camels.
Haw ...	<i>Cymbopogon Iwarancusa</i> .	In hills ...	Fodder for cattle.
Héshark ...	...	Hilly tracts ...	Roots used as a drug for fever.
Hing, Hinge..	<i>Ferula Asafoetida</i>	Koh-i-Sultán and other hills.	Drug.
Hum ...	<i>Periploca Aphylla</i> .	Hills ...	Fodder for sheep and goats.
Husainbútau	...	In Mal ...	Fodder for goats, also used as a drug for fever and stomach-ache.
Jaur... ..	<i>Nerium odorum</i> ...	In hills and river beds.	A poisonous plant.
Jir, <i>Dranag</i> , Bl.	<i>Artemisia</i> ...	A wild bush found all over the District.	Fodder for sheep, goats and donkeys. Also used as fuel.
Kaj ...	<i>Stipa ovaristida</i> ...	Hills ...	Fodder for cattle.
Kalágho ...	...	In Dák plain ...	Fodder for camels, sheep and goats.
Kalpora ...	<i>Teucrium Stock-sianum</i> .	Hills ...	Fodder for sheep and goats.

## CHAGAI.

## APPENDIX III—(contd.)

Name in Bráhni and Baluchi.	Scientific name.	Locality where found.	Brief remarks as to uses, etc.
Kándár ...	...	Hills ...	Fodder for cattle.
Kárawán-kush	<i>Pterophyrum Olivieri.</i>	In the skirts of hills.	Fodder for camels.
Káshum ...	<i>Erianthus griffithii.</i>	Hills ...	Fodder for cattle.
Kémár, <i>Kaimár</i> , Bl.	...	Found all over the District.	do.
Khákshír ...	...	Hill skirts or <i>dámán</i> .	Eaten green by sheep, goats and camels. Also eaten by poorer classes during scarcity.
Khamu* ...	...	In sands and plains.	Fodder for camels, sheep and goats.
Kírgo ...	...	In sands ...	Fodder for camels, sheep and goats.
Kirri, <i>Gaz</i> Bl.	<i>Tamarix Articulata</i> (tamarisk).	In Mal. Khaisár and other river beds.	When green, serves as a fodder for camels; also used for fuel and making wattle.
Kirta ...	...	In salt lands ...	An evergreen plant used as fodder for all animals.
Kisánkúr, <i>Is-pantán</i> , Bl.	<i>Peganum Har-mala.</i>	In plains ...	Seed used as a drug for stomach-ache; also used as incense to drive away evil spirits.



## CHAGAI.

## APPENDIX III—(contd.)

Name in Bráhui and Baluchi.	Scientific name.	Locality where found.	Brief remarks as to uses, etc.
Kotor ...	Stocksia Brahuica.	In skirts of hills.	Fuel.
Kulkusht ...	...	In river beds or sandy soils.	Fodder for goats; also eaten mixed with <i>ata</i> by poorer classes.
Kunchito ...	...	Hills ...	Leaves used as a fomentation in cases of head-ache.
Labu ...	...	In plains ...	Fodder for camels, sheep and goats; also used as food by the poorer classes in times of scarcity.
Lahra ...	...	In plains ...	Fodder for camels, sheep and goats.
Lakatiombak.	...	In Dák lands ...	Fodder for cattle.
Maghér ...	Rumex vesicarius	In sandy plains...	When green, used as a vegetable, and also as fodder for cattle. The seed mixed with <i>ata</i> is made into bread.
Mazong ...	Gymnocarpus de-candrum	Hills ...	Fodder for sheep and goats.
Mati... ...	...	In salt land near Kuchaki Cháh and Padag.	An ever-green plant which serves as fodder for camels, sheep and goats.

## CHAGAI.

## APPENDIX III—(contd.)

Name in Bráhui and Baluchi.	Scientific name.	Locality where found.	Brief remarks as to uses, etc.
Mazh ...	...	In sand hills ...	An excellent fodder for horses and other animals.
Mungli ...	<i>Orthonnopsis intermedia.</i>	Nushki ...	Fodder for goats.
Murúbai ...	...	In the skirts of mountains.	Fodder for camels, sheep and goats; when green, it is also eaten by the poorer classes.
Nadag ...	...	In river beds ...	Used as a drug for gout and rheumatism.
Nál ...	<i>Phragmites communis.</i>	In mountains such as Rás Koh	The reed is used for the stem of <i>hukas</i> and also for the flutes ( <i>nal</i> ) played on by the Baloch shepherds.
Nariánband ..	...	Everywhere in plains.	Fodder for sheep, goats and camels.
Páchip Káh .	...	Hill torrents ..	Fodder for camels, sheep and goats.
Panérband ...	<i>Withania Coagulans.</i>	Hills ...	An evergreen plant.
Patak ...	...	...	...
Pidari ...	...	In the skirts of mountains.	A drug used to make cooling drink and also by the women for dressing the hair.
Pílgosh ...	<i>Crambe Cordifolia</i>	Hills.	Fodder for sheep and goats.

## CHAGAI.

APPENDIX III—*contd.*

Name in Bráhui and Baluchi.	Scientific name.	Locality where found.	Brief remarks as to uses, etc.
Pímalak ...	<i>Allium Rubelium</i>	Sandy plains ...	Fodder for camels, sheep and goats.
Pissi ...	...	Hills ...	A thorny tree, the fruit of which is used as a drug for diarrhoea.
Pit ...	...	Plains and fields..	Fodder for camels, sheep and goats.
Pítruk ...	<i>Scorzonera papposa.</i>	In all hills ...	A fodder for sheep and goats; also eaten by the poorer classes.
Píunpulli ...	<i>Matricaria lusiocarpa.</i>	In Dák plain ...	Fodder for sheep and goats. The flower is used as a drug for fever.
Pochko ...	<i>Althaea Ludwigii.</i>	In skirts of hills..	Roots used as food by the nomads.
Pogh ...	...	In sandy plain ...	Fodder for camels, also used as fuel.
Puzho ..	<i>Convolvulus microphyllus.</i>	In sand hills ...	Fodder for all cattle.
Púrchink ...	<i>Zizyphora clinopodioides.</i>	In hills or the sides of big <i>kárézes.</i>	
Right ...	<i>Suaeda monoica</i> ...	Found in salt lands.	Fodder for camels, sheep and goats.
Sagdaru ...	...	In sandy tracts...	Fodder for camels, sheep and goats.

## CHAGAI.

## APPENDIX III—(contd.)

Name in Bráhui and Baluchi.	Scientific name.	Locality where found.	Brief remarks as to uses, etc.
Sarëshko ...	<i>Eremurus vehitinus.</i>	Plains ... ..	Fodder for camels, sheep and goats.
Shénalo, <i>Shé-naluk</i> , Bl.	...	Hills ... ..	Fodder for sheep and goats.
Shinz ...	<i>Alhagi camelorum.</i>	Plains and fields..	Camel fodder.
Shitir ...	...	Hills ... ..	Root used for curing leather.
Shod ...	...	Hills ... ..	Roots used for washing clothes.
Simsúr ...	...	In salt soil ...	An excellent fodder for camels.
Siyahgargo...	<i>Isatis Minora</i> ...	Plains ... ..	Fodder for sheep and goats.
Sohrmard ...	...	Hills ... ..	do.
Sundum ...	<i>Epitasia ammophila.</i>	Skirts of hills ...	Fodder for all animals. Also eaten raw by nomads.
Tághaz ...	<i>Haloxylon Ammodendron.</i>	Plains ... ..	Fodder for camel throughout the year; also used as fuel.
Tarand ...	...	Skirts of hills ...	Fodder for sheep, goats and camels.
Trát ...	...	Plains ... ..	Fodder for camels, sheep and goats.

## CHAGAI.

## APPENDIX III—(contd.)

Name in Bráhui and Baluchi.	Scientific name.	Locality where found.	Brief remarks as to uses, etc.
Trúshko, <i>Trúshpako</i> , Bl.	Rumex vesicarius.	Hills ...	Fodder for sheep and goats.
Tusso ...	...	Skirts of hills ...	The dried flowers are used as a cure for gout.
Zampad ...	Koelpinia ...	Plains ...	Fodder for cattle. Also eaten by men.

*Note.*—When name of a tree, &c., in Baluchi differs from that in Bráhui, the former is printed in italics with the letters "Bl."

## CHAGAI.

## APPENDIX IV.

An alphabetical list of agricultural implements used in the Chágai District.

Name in Bráhui.	Explanation.
Aragh ... ..	A sickle.
Bél ... ..	A spade.
Chárshákh ... ..	Four pronged fork for winnowing.
Dal ... ..	A wooden spade worked by two men with a rope for making small embankments.
Dalli ... ..	A wooden spade for winnowing grain.
Dasta ... ..	Handle of the plough.
Dushákh... ..	Two pronged fork.
Jugh ... ..	A yoke.
Jughlu ... ..	Wedges in the yoke.
Kamér ... ..	A plough share.
Kén ... ..	A plank harrow.
Kodál ... ..	A mattock.
Langár ... ..	A plough.
Lashi ... ..	A sickle.
Máhla ... ..	A wooden log used as clod crusher.
Mushtuk... ..	The wooden pins placed in the "jugh" on either side of the neck of an ox while ploughing.
Pík ... ..	A wedge in the plough.

## CHAGAI.

## APPENDIX IV—(contd.)

Name in Bráhui.	Explanation.
Ramba ... ..	A weeding spud.
Sar shatínk ... ..	The shaft of a plough worked by oxen.
Sundh ... ..	A drill. Drilling.
Shatínk ... ..	The shaft of a plough worked by camels.
Tabar or tafar ... ..	An axe.
Zubánk ... ..	Shoe of the plough.

NOTE.—*Dasta* is *Dastag*, *Máhla*, *Máhlag* and *Zubánk*, *Zowánk* in Baluchi.  
In other cases the terms in Bráhui and Baluchi are the same.

## CHAGAI.

## APPENDIX V.

An Alphabetical list of agricultural, revenue and shepherds' terms used in the Chágai District.

Bráhni.	Baluchi.	Explanation.
Abúsi ...		The ripe ears of corn.
Ahd ...	Ahdígari ...	Wages in kind paid to artizans.
Ahdígir ...		Village artizan. See also <i>ustákár</i> .
Ahingar ...		Blacksmith. See <i>Lori</i> .
Alálan ...		Weaning time.
Alor ...	Dab ...	The refuse of the fodder after it has been left by the cattle. See <i>latár</i> .
Ambár ...		Granary.
Ambárchín...		Servants engaged to guard the granaries.
Angúro or Angúri.		Name applied to the corn when it first appears above the ground.
Arbáb ...		A Superintendent appointed to look after tenants.
Asiáb ...		A water mill.
Asiyáwán ...		A miller.
Bágh ...		A garden.
Bághícha ...		A small garden.
Bag-jat ...		A camel herd.
Band ...		A dam or embankment.
Batái ...		Division of crops.



## CHAGAI.

APPENDIX V—*contd.*

Bráhui.	Baluchi.	Explanation.
Bazgar		Tenant, as distinguished from <i>khwázdár</i> .
Bégár		Forced labour.
Bilim		A rope with which lambs and kids are tethered.
Bíring	Doshag	To milk.
Birwé	Géchin	Sieve.
Bog		Wheat or barley at an early stage.
Bogri		A piece of land given to a tenant or a <i>mullá</i> free of rent for cultivation.
Bobál		Rent paid by tenant to landlord.
Burruk		Name given to green wheat.
Buz-gal	Buzgalah	A-flock of goats.
Chhat		To sow seed broadcast.
Chakul		Small plot of cultivation on the hill-side.
Chapar (Tspar).	Used by Baréch only.	Weighted thorny hurdle used for threshing grain.
Chashma		A spring.
Chén		Shearing sheep and goats.
Chénok		Shearer.
Chhér		Cleaning water channels in spring.
Chilko		Creeping plant.
Chond		Lucerne in its early stage.

## CHAGAI.

## APPENDIX V—(contd.)

Bráhui.	Baluchi.	Explanation.
Chúchuk ...		The second crop of <i>zurrat</i> which does not come to maturity.
Chughul ...	Géchin ...	A sieve.
Chur ..	Kaur ...	A small hill torrent.
Dabb ...		Stagnant water.
Dáchi ...		Female camel.
Dahyak ...		Name given to the "red" wheat which is usually sown in the District.
Dahika . ...		Revenue paying land.
Daloi ...	Singoli ...	Sandy soil containing gravel.
Dámán ...	Dahmán ...	Stony land along the skirt of a hill.
Dánabandi ...		Appraisalment of standing crops for fixing Government demands. See also <i>ijára</i> .
Daskand or dastkand.		Cultivation done by manual labour, as opposed to land prepared by the plough.
Dawár ...		A sheep pen.
Déru ...	Dénu ...	A milch sheep or goat formerly taken by the Sanjrání chief as a tax on flocks.
Dhaggi ...		A cow.
Dhor ...	Kaur ...	A hill torrent carrying flood water.
Dranzing ...	Dranzag ...	To winnow.
Drassum ...	Múd ...	Goat's hair.
Drosh ...		A cut made by flock-owners in a goat's ear as a distinguishing mark.

## CHAGAI.

## APPENDIX V—(contd.)

Bráhui.	Baluchi.	Explanation.
Droshi ..		A sheep or goat set apart for sacrifice.
Dukkál ...		Drought, also famine.
Dún... ..	Cháh ...	A well.
Gabb ...		Wheat or barley crops when the ears first begin to form.
Gab-o-khosha (also <i>khosha kash</i> ).		Wheat or barley crops when the ears have formed, but are not yet ripe.
Galao-tumgh or mili.		Seed of melons.
Gar ... ..		A disease which attacks lucerne, <i>pálézes</i> and grapes.
Garat ... ..		Seed sown in dry crop lands without ploughing.
Gardu (or gir- du).		A pole in the centre of the threshing floor around which the bullocks revolve.
Gari... ..		A skin for carrying butter.
Gárumpán ...	Gowál ...	Cowherd.
Gér ... ..		A sheep or goat pen.
Ghandu ...	Ghanda ...	A handful of grain.
Ghunj ... ..		A woollen blanket used for carrying fodder
Girik ... ..		A bundle of spun wool.
Govat ... ..		To thresh.
Guarg ... ..		A small embankment.

## CHAGAL.

## APPENDIX V—(contd.)

Bráhní.	Baluchi.	Explanation.
Gumána ...		The head or trial well of a <i>káréz</i> .
Gwála ...	Gwálagh ...	A big woollen sack.
Haq-i-chungi.	...	A cess or octroi, levied in Nushki at the rate of $\frac{1}{2}$ <i>kása</i> per heap of grain.
Haq-i-kásgi ...	...	Wages for measuring grain. A cess levied in Nushki at the rate of 4 <i>kásas</i> per <i>khorí</i> or heap of grain consisting of not less than one <i>kharwár</i> or 10 maunds in weight.
Haq-i-mál-kana.	...	Allowance paid to headmen for collecting revenue.
Haq-i-náib ...	...	Share due to <i>náib</i> . A cess levied in Nushki at one <i>kása</i> per <i>khorí</i> exceeding 10 maunds in weight.
Haq-i-náib kharch.	...	A cess levied in Nushki by the Khán's officials before the tahsíl was leased to British Government.
Haq-i-thappo.	...	Share due to official who sealed the various heaps of produce, payable at the rate of 1 <i>kása</i> per <i>khorí</i> or heap.
Hashar ...		A system of co-operative labour in vogue in the villages.
Hashari ...		A labourer working under the <i>hashar</i> system.
Huch ...	Ushtur ...	A camel (male).
Huchkás ...	Ushtur pazhm	Camel's wool.
Ijára ...		Appraisalment of standing crops for fixing Government revenue. See also <i>dánabandi</i> .

CHAGAI.  
APPENDIX V—(contd.)

Bráhui.	Baluchi.	Explanation.
Inám ...	Mwáphi ...	Revenue-free holdings.
Izak... ..		A skin used for churning milk.
Jallak ...		Spindle for wool spinning.
Jo ...		A water channel.
Joak ...		A small irrigation channel.
Johán or Jowán.	Kharman ...	A heap of threshed crop before grain is separated.
Kad ...		Manure.
Kachh ...		Survey.
Karab ...		Zurrat stalks.
Káréz ...		Underground water channel.
Kárigar ...	Kárézkash...	A <i>káréz</i> digger.
Khar ...	Goránt ...	Ram.
Kharás ...	Gok ...	Bullock.
Khat kashi...		A custom by which a man sinks a new <i>káréz</i> on another man's land on condition of getting a share, generally one-half, in the proprietorship both of land and water.
Khít ...	Hít ...	Green wheat or barley used as fodder.
Khosha ...	Hoshag ...	Ear of corn.
Khoshachín...	Hoshachín...	A gleaner.
Khún ...		Place in a house or tent set apart for bullocks

## CHAGAI.

## APPENDIX V—(contd.)

Bráhui.	Baluchi.	Explanation.
Khurram ...		Grain pits.
Khushkáwa...	Khushkáwag	Cultivation on dry crop areas.
Khwázdár ...	Wázdár ...	Land owner.
Kishár ..		Cultivation.
Kot or Khori.		Small heaps of grain made at the time of <i>batáí</i> .
Kúli ...		Earthen receptacles for storing grain.
Kur ...	Ramag ...	A flock.
Kurdah ...		Small plot of land.
Kurdahbast ..		Embanked fields on irrigated land.
Lábh ...	Dráo ...	Harvest.
Lái ...		Wages paid to reapers.
Láigir ...		Reapers.
Langár kan-ning.	Langár ka-nag.	Ploughing.
Latár ...	Dab ...	The refuse of the fodder left by cattle. See <i>alor</i> .
Lath ...		Embankment.
Lathband bazgar.		A tenant who acquires occupancy right by constructing embankments in dry crop areas.
Lori ...		Blacksmith. See <i>ahingar</i> .

## CHAGAI.

## APPENDIX V—(contd.)

Bráhui.	Baluchi.	Explanation.
Lor ...		A sheaf of corn.
Mahbatta ...		An enclosed field close to a village.
Máhlau ...		Crop sown at the proper season.
Malik ...		A village headman. Also name given to a village official appointed by the villagers to superintend the division of water and the maintenance of water channels.
Maliki ...		Remuneration paid to village headman for collecting Government demands, usually 5 per cent. See also <i>Haq-i-Malikána</i> .
Máliya ...	Gham ...	Government revenue demand.
Mattio dagh-ár.		Soil which contains silt or <i>matt</i> .
Mázu ...		A wooden aqueduct. See also <i>tarnáwa</i> .
Mélh ...	Pas ...	Sheep.
Milk ...		Property in land.
Minjár ...		A heap of <i>bhúsa</i> plastered over with a coating of mud.
Mí ás ...	Mírát ...	Ancestral land.
Mora ...		Bundle of dry lucerne.
Nam ...		First watering before the land is ploughed.
Nambúr ...	Súfa ...	Tunnel connecting wells of a <i>káréz</i> .
Náwar ...		A pool or lake formed by collection of rain water.

## CHAGAI.

## APPENDIX V—(contd.)

Bráhui.	Baluchi.	Explanation.
Nihál ...		Young trees.
Nokáp ...		A flood.
Páchálaw ...		Crop sown late.
Palál ...		Wheat or barley stubble.
Paláli. ...		Land cleared of its crop.
Pález ...		Generic term for cucurbitaceous crops.
Parghat ...		Second threshing as distinguished from <i>gowat</i> .
Patt... ...		Soft white soil.
Patwári ..		Village accountant.
Paurmál ...	Guátmál ...	Ears of wheat withered by wind.
Pazhguati ...		Chaff.
Pug ... ...		Chopped straw ( <i>blúsa</i> ).
Púi ... ...	Kirmi ...	Affected by <i>pu</i> insects.
Pujén ..		To clear land of shrubs etc.
Réko ...		Sandy soil.
Roína ...	Bránag ...	Open <i>kárez</i> channel.
Sáf ... ...		Crop of wheat or barley when the ears of corn have appeared.
Sarband ...		Wells of a <i>kárez</i> , the tops of which are covered.
Sargalah ...		The best fed camel, sheep or goat in a herd or flock.



## CHAGAI.

## APPENDIX V—(contd.)

Bráhui.	Baluchi.	Explanation.
Sarsáyah ...	Zakát ...	A quantity of grain given annually by each family to the village <i>mullá</i> .
Sauzbag ...		The autumn crop.
Sauzwán ...	Sabzwán ...	A crop watcher.
Séb ...		Spun wool.
Shágirdána...		Share paid to miller's agent for grinding corn.
Shariko-dag- hár or jam- na daghár.	Shoríkiga daghár.	Undivided or common land.
Shíra ...		Half formed grain.
Shom. ...		First ploughing after harvest.
Shomprosh...		First watering of a crop.
Shwán ...		A shepherd.
Siáháp ...		Perennial water.
Simáz ...		A rope for drawing water out of the wells.
Sorag daghár	Sorai daghár.	Salt land.
Surkhi ...		Rust.
Súrsát ...		Supplies collected for Government purposes.
Taláp ...		A tank or pool in which <i>kárez</i> water is collected.
Tarnáwa ...	Mázú ...	Wooden aqueduct. See <i>mázu</i> .
Taruk ...		Unripe melon.

## CHAGAI.

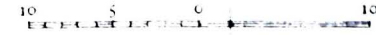
## APPENDIX V—(contd.)

Bráhui.	Baluchi.	Explanation.
Thapodár ...		A Government official who watches the crops at the time of harvest.
Tinri ...		Cattle tax.
Trangar ...		A net for carrying <i>bhúsa</i> .
Tuk ... ..		The contributions paid to a <i>mullá</i> , <i>saíad</i> or shrine.
Tumgh ...		Seed.
Tungshán ...		The spring crop.
Ustakár ...		Village artizan. See also <i>ahdígr</i> .
Wal ...		Melon plants ; any creeping plants.
Zágh ...		A heap of grain when it has been cleaned.
Zah... ..	Guarag ..	A flock of lambs and kids.
Zank ...		Lambing season.
Zápán ...		A shepherd who tends young kids.
Zarkharído daghár	Zarkharya daghár.	Land acquired by purchase.
Zik ... ..		A skin for storing <i>ghí</i> .
Zoba ...		The shepherds wages given in kind.

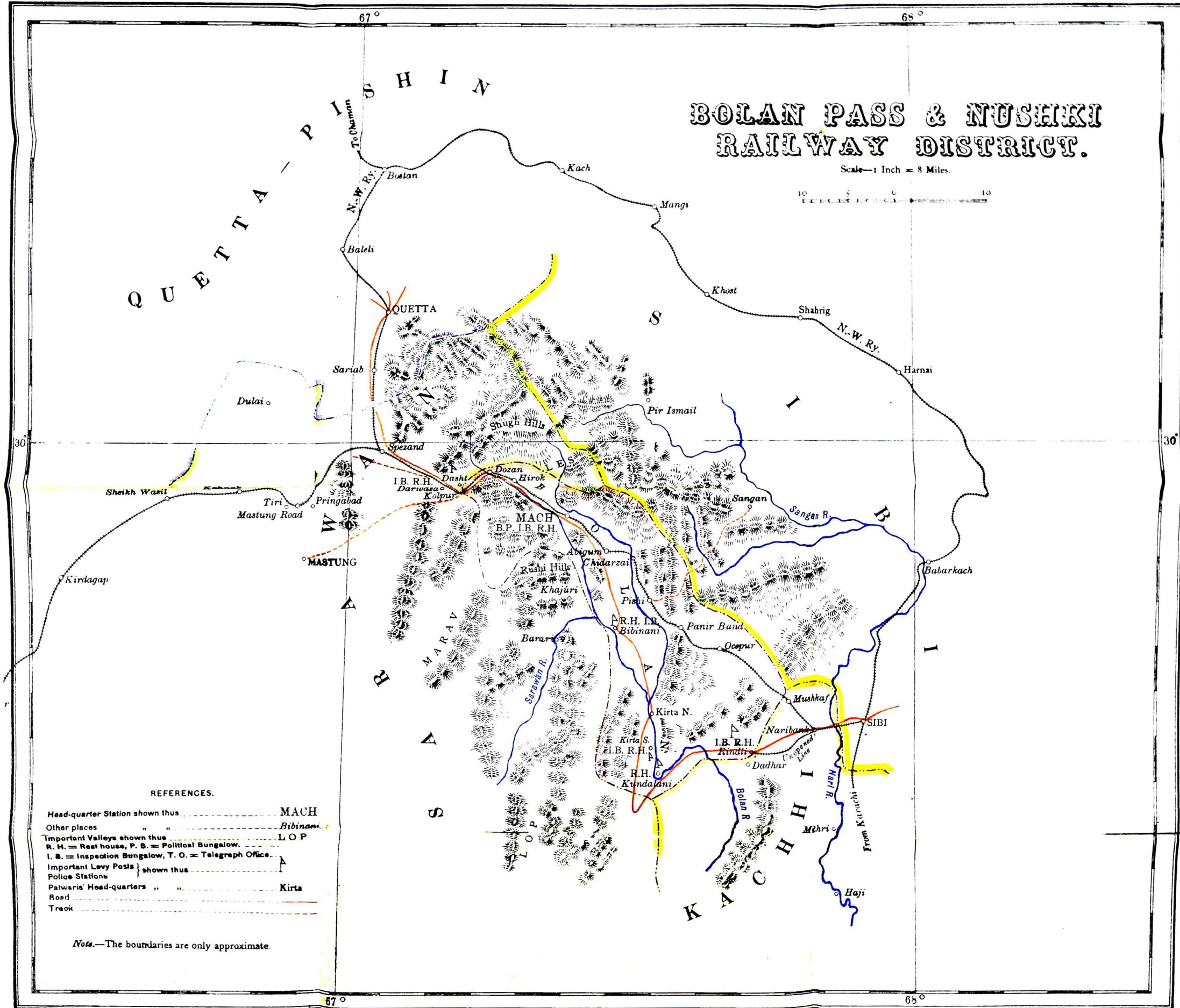
NOTE.—Where the Baluchi name is not given, the word is the same.

# BOLAN PASS & NUSEKI RAILWAY DISTRICT.

Scale—1 Inch = 8 Miles.



Q U E T T A — P I S H I N



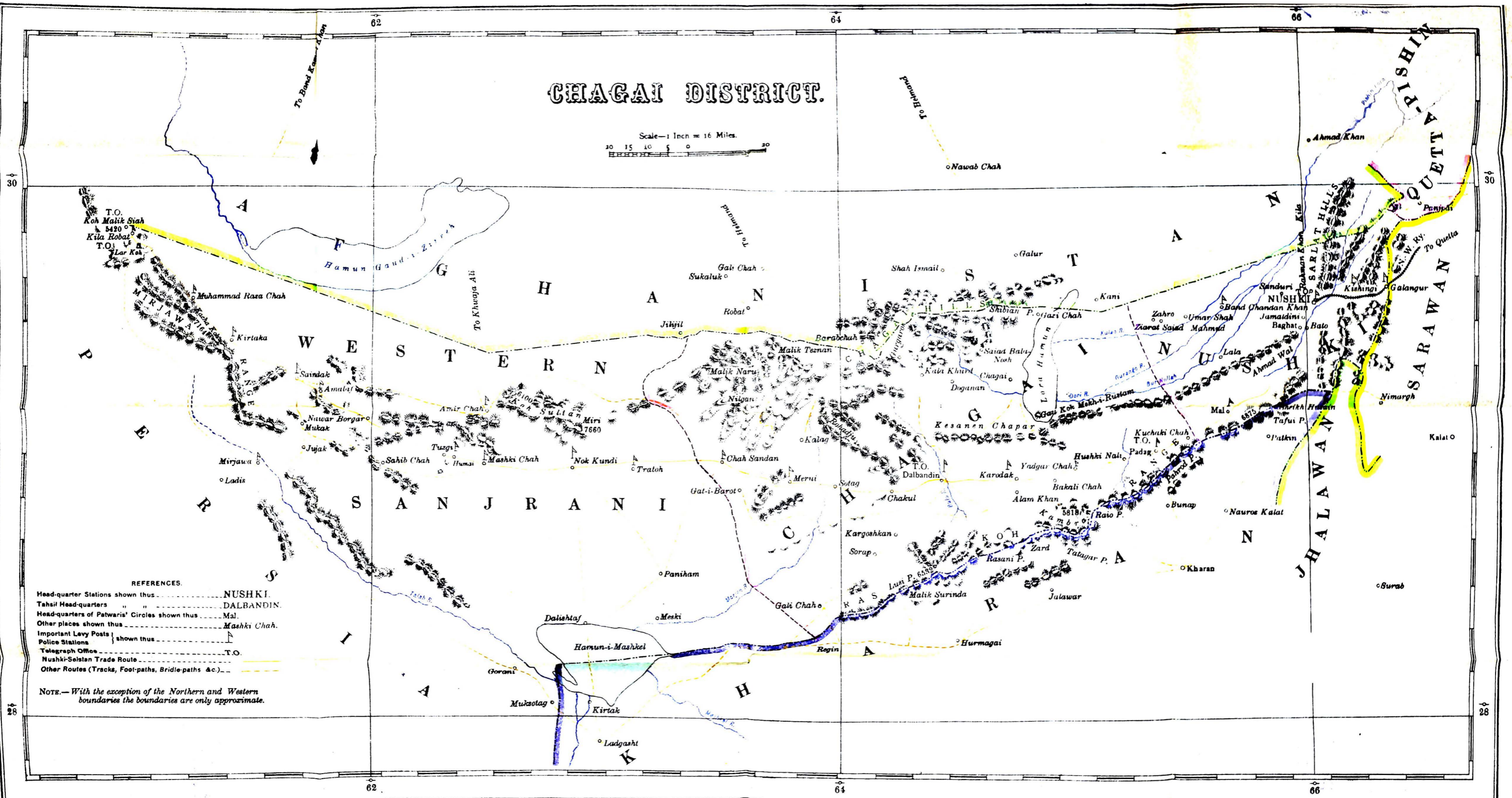
**REFERENCES.**

Head-quarter Station shown thus	..... MACH
Other places	..... Bibinani
Important Valleys shown thus	..... L O P
R. H. = Rest house, P. B. = Political Bungalow.	
I. B. = Inspection Bungalow, T. O. = Telegraph Office.	
Important Levy Posts	} shown thus
Police Stations	
Patwaris' Head-quarters	..... Kirta
Road	.....
Track	.....

Note.—The boundaries are only approximate.

# CHAGAI DISTRICT.

Scale—1 Inch = 16 Miles.



- REFERENCES.
- Head-quarter Stations shown thus ..... NUSHKI.
  - Tahsil Head-quarters " " ..... DALBANDIN.
  - Head-quarters of Patwaris' Circles shown thus ..... Mal.
  - Other places shown thus ..... Mashki Chah.
  - Important Levy Posts shown thus ..... T.O.
  - Police Stations
  - Telegraph Office
  - Nushki-Seistan Trade Route
  - Other Routes (Tracks, Foot-paths, Bridle-paths &c.)

NOTE.—With the exception of the Northern and Western boundaries the boundaries are only approximate.