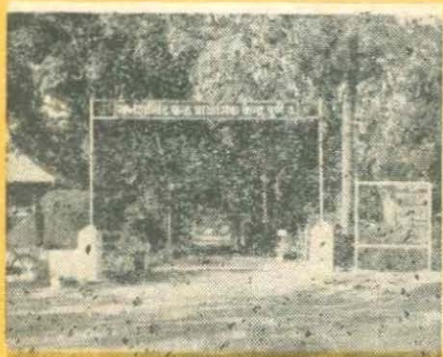


# Locations of Offices of Department of Agriculture

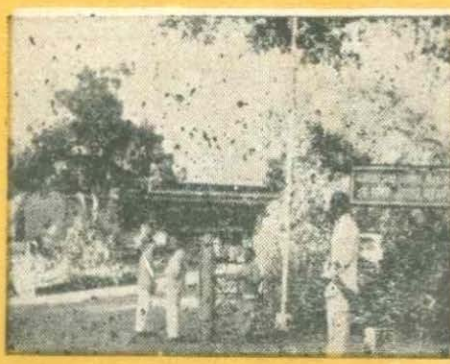


J.2315,WN:3.2  
K5

Maharashtra



J.2315,WN:3.N7  
K5  
127899



## CONTENTS

### Alphabetically arranged District-wise Locations

DISTRICT	PAGE
1. Ahmednagar	1
2. Akola	2
3. Amravati	3
4. Aurangabad	7
5. Bhandara	9
6. Bhir	11
7. Buldhana	12
8. Chanda	13
9. Dhulia	14
10. Jalgaon	16
11. Kolaba	18
12. Kolhapur	19
13. Nagpur	21
14. Nanded	23
15. Nasik	24
16. Osmanabad	27
17. Parbhani	29
18. Poona	31
19. Ratnagiri	35
20. Sangli	37
21. Satara	38
22. Sholapur	40
23. Thana	42
24. Wardha	43
25. Yeotmal	44

## **LOCATIONS OF OFFICES OF THE DEPARTMENT OF AGRICULTURE, MAHARASHTRA STATE**

**THE** Agriculture Department of Maharashtra State is engaged in various activities in the field of increasing agricultural production in the State, by educating the farmers in the modern scientific technology, making the required where-withals available to him and thereby improving his economic condition. With this object in view the activities of the Agricultural Department in the sphere of education, research and development have been carefully planned. The work is carried out through a large number of plan and non-plan schemes. Officers of Agricultural Department are located at various places for implementing these schemes. This bulletin is prepared with an object to give information on the locations of offices and educational institutions and headquarters of the officers of Agricultural Department with their designations.

The administration of the Department is carried out by the Director of Agriculture with the help of an Additional Director and five Joint Directors of Agriculture each for (1) Planning, Statistics and Administration (2) Soil Conservation and Agricultural Engineering, (3) Agricultural Extension, (4) Research and Education and (5) Horticulture. They are assisted by the Deputy Directors and Technical Officers.

The agricultural activities in each division are supervised by the Superintending Agricultural Officer, who is assisted by two Deputy Directors of Agriculture, one for Agricultural Engineering and other for Research and Education. The Personal Assistant assists him in matters of Extension. In addition, there are five officers assisting the Superintending Agricultural Officer one each for (1) Statistics, (2) Crop Protection, (3) Crop Campaigns, (4) Agricultural Engineering and (5) Accounts. In the District, the agricultural activities are under the administrative control of Zilla Parishad and directed by Parishad Agricultural Development Officer, who is assisted by the District Agricultural Officer, the Campaign Officer and other Technical and Ministerial staff.

There are in all 18 State Level Specialists out of whom 7 Specialists are by crop and are located at the main Research Stations for respective crops such as cotton, sugarcane, oil-

seeds, rice, wheat, millets and fruit crops. The remaining are by subjects that is one each for Agronomy, Soil Science, Chemistry, Entomology, Plant Pathology, Agricultural Economics, Statistics, Agricultural Engineering, Horticulture etc.

In the field of Agricultural Education and Training, there are 7 Agricultural Colleges (including one private college), 21 Agricultural Schools, 9 Gramsevak Training Centres, 8 Soil Conservation Training Institutes, 2 Workshop Training Centres and 3 Home Science Wings.

Soil Conservation Section of this Department is expanding day by day and there are at present 20 Divisional Soil Conservation Officers and 110 Sub-Divisional Soil Conservation Officers in the State.

There are 233 Taluka Seed Multiplication Farms and 87 different Research Stations in the State. These Research Stations are located as per Agroclimatic Zones in the State. Special staff is working in the schemes of Oilseeds Extension, Cotton Extension, Sugarcane Development, Compost, Fertilizer, etc.

DEPARTMENT OF AGRICULTURE, MAHARASHTRA STATE

LOCATION OF OFFICES

**AHMEDNAGAR DISTRICT**

*State Level*

CROP SPECIALIST		Headquarter
1. Horticulturist, Citrus Dieback Disease Scheme.		Shrirampur.

*District Level*

ZILLA PARISHAD ESTABLISHMENT

1. Parishad Agricultural Development Officer.		Ahmednagar.
2. District Agricultural Officer	...	Ahmednagar.
3. Assistant District Agricultural Officer	...	Ahmednagar.
4. Campaign Officer	...	Ahmednagar.

*Other Sections of the Agricultural Department*

SOIL CONSERVATION SCHEME

1. Divisional Soil Conservation Officer	..	Ahmednagar.
2. Sub-Divisional Soil Conservation Officer	...	Ahmednagar.
3. Sub-Divisional Soil Conservation Officer	...	Parner.
4. Sub-Divisional Soil Conservation Officer	...	Pathardi.
5. Sub-Divisional Soil Conservation Officer	...	Karjat.
6. Sub-Divisional Soil Conservation Officer	...	Jamkhed.
7. Sub-Divisional Soil Conservation Officer	...	Sangamner.
8. Sub-Divisional Soil Conservation Officer	...	Shrirampur.

EDUCATIONAL INSTITUTIONS

1. Superintendent, Agricultural School	...	Puntamba.
--	-----	-----------

AGRICULTURAL RESEARCH STATIONS

1. Officer-in-Charge, Sugarcane Research Station.		Deolali, Taluka Rahuri.
2. Officer-in-Charge, Agriculture Research Station.		Kopergaon.

## AHMEDNAGAR DISTRICT—contd.

*Other Sections of the Agricultural Department—contd.*

AGRICULTURAL RESEARCH STATIONS—contd.		Headquarter
3.	Officer-in-Charge, Agricultural Research Station.	Chas.
4.	Officer-in-Charge, Citrus Fruit Research Station.	Shrirampur.
5.	Officer-in-Charge, Agricultural Research Station.	Kukana.
6.	Officer-in-Charge, Trial-cum-Demonstration Farm (Ghod Weir Project).	Kashti.

## TALUKA SEED MULTIPLICATION FARMS

1.	Agricultural Supervisor, In-charge Taluka Seed Multiplication Farm.	Ahmednagar.
2.	Do.	... Bhalwani.
3.	Do.	... Karjat.
4.	Do.	... Arangaon.
5.	Do.	... Limpangaon.
6.	Do.	... Chilekhanvadi.
7.	Do.	... Chincholi (Shirala).
8.	Do.	... Thakur.
9.	Do.	... Pimpalgaon.
10.	Do.	... Konkangaon.
11.	Do.	... Rahuri.
12.	Do.	... Akola.
13.	Agricultural Assistant, In-charge, Taluka Seed Multiplication Farm.	Shrirampur.
14.	Do.	... Puntamba.

## DEVELOPMENT SCHEMES

1.	Sugarcane Development Officer	Ahmednagar.
2.	Cotton Development Officer	Ahmednagar.
3.	Crop Protection Officer, In-charge Sugarcane Development Scheme.	Ahmednagar.

## AKOLA DISTRICT

*District Level*

## ZILLA PARISHAD ESTABLISHMENT

Headquarter

- |   |     |        |
|---|-----|--------|
| 1. Parishad Agricultural Development Officer. | ... | Akola. |
| 2. District Agricultural Officer              | ... | do.    |
| 3. Assistant District Agricultural Officer    | ... | do.    |
| 4. Campaign Officer                           | ... | do.    |

*Other sections of the Agricultural Department*

## SOIL CONSERVATION SCHEME

- |   |     |             |
|---|-----|-------------|
| 1. Divisional Soil Conservation Officer     | ... | Akola.      |
| 2. Sub-Divisional Soil Conservation Officer | ... | do.         |
| 3. Do.                                      | ..  | Mangrulpir. |

## EDUCATIONAL INSTITUTIONS

- |   |     |        |
|---|-----|--------|
| 1. Principal, College of Agriculture                | ... | Akola. |
| 2. Principal, Soil Conservation Training Institute. |     | do.    |
| 3. Superintendent, Agricultural School,             | ... | do.    |

## RESEARCH SCHEME

- |   |  |        |
|---|--|--------|
| 1. Research Officer, Arboreum Cotton Breeding Scheme.       |  | Akola. |
| 2. Research Officer, Scheme for Dahiya Resistant varieties. |  | do.    |

## AGRICULTURAL RESEARCH STATIONS

- |  |  |         |
|--|--|---------|
| 1. Officer-in-Charge, Agricultural Research Station.                     |  | Washim. |
| 2. Extra Assistant Director of Agriculture Government Experimental Farm. |  | Akola.  |

## DEVELOPMENT SCHEME

- |  |     |             |
|--|-----|-------------|
| 1. Assistant Oil-seeds Extension Officer                       | ... | Akola.      |
| 2. Assistant Oil-seeds Extension Officer, (Package Programme). | ... | Murtizapur. |

## AKOLA DISTRICT—contd.

*Other sections of the Agricultural Department—contd.*

TALUKA SEED MULTIPLICATION FARMS		<i>Headquarter</i>
1.	Agricultural Supervisor, In-charge Taluka Seed Multiplication Farm.	Wadha.
2.	Do.	... Sirsi.
3.	Do.	... Vitholi.
4.	Do.	... Babulkhed.
5.	Do.	... Shirala.
6.	Do.	... Alanda.
7.	Do.	... Borgaon— Manju.
8.	Do.	... Wadoli— Satwai.
9.	Do.	... Gadegaon.
10.	Agricultural Assistant, In-charge Taluka Seed Multiplication Farm.	Malegaon.
11.	Do.	... Karanjkali.
12.	Do.	... Vanoja.



**AMRAVATI DISTRICT***State Level***RESEARCH SCHEME***Headquarter*

- \* 1. Research Officer, American Cotton Breeding Scheme. Achalpur.

*District Level***ZILLA PARISHAD ESTABLISHMENT**

- |   |           |
|---|-----------|
| 1. Parishad Agricultural Development Officer. | Amravati. |
| 2. District Agricultural Officer              | do.       |
| 3. Assistant District Agricultural Officer    | do.       |
| 4. Campaign Officer                           | do.       |

*Other sections of the Agricultural Department***SOIL CONSERVATION SCHEME**

- |   |           |
|---|-----------|
| 1. Divisional Soil Conservation Officer     | Amravati. |
| 2. Sub-Divisional Soil Conservation Officer | do.       |
| 3. Do.                                      | Morshi.   |
| 4. Do.                                      | Chandur.  |
| 5. Do.                                      | Achalpur. |

**EDUCATIONAL INSTITUTIONS**

- |   |           |
|---|-----------|
| 1. Principal, College of Agriculture (Private). | Amravati. |
| 2. Superintendent, Agricultural School          | do.       |
| 3. Principal, Gramsevak Training Centre         | do.       |
| 4. Chief Instructress, Home Science Wing,       | do.       |
- (Government Aided).

**GOVERNMENT FARMS**

- |                                    |           |
|------------------------------------|-----------|
| 1. Superintendent, Government Farm | Amravati  |
| 2. Do.                             | Achalpur. |

## AMRAVATI DISTRICT—contd.

*Other sections of the Agricultural Department—contd*

<b>AGRICULTURAL RESEARCH STATIONS</b>		<i>Headquarter</i>
1.	Officer-in-Charge, Agricultural Research Station.	Achalpur.
<b>DEVELOPMENT SCHEME</b>		
1.	Cotton Extension Officer	... Amravati.
<b>TRACTOR PLOUGHING SCHEME</b>		
1.	Tractor Engineer (M. T. Unit)	... Amravati.
<b>TALUKA SEED MULTIPLICATION FARMS</b>		
1.	Agricultural Supervisor, In-charge Seed Multiplication Farm	Taluka Yerla.
2.	Do.	... Walgaon
3.	Do.	... Dhanora.
4.	Do.	... Kusumkot.
5.	Do.	... Chandur (Rly.)
6.	Do.	... Paratvada
7.	Do.	... Chandur (Bazar)
8.	Do.	... Umarkhed.
9.	Agricultural Assistant, In-charge Seed Multiplication Farm	Taluka Teosa
10.	Do.	Anjangaon

---

## AURANGABAD DISTRICT

### State Level

#### CROP SPECIALIST

*Headquarter*

- |                              |     |             |
|------------------------------|-----|-------------|
| 1. Assistant Horticulturist  | ... | Aurangabad. |
| 2. Oilseeds Research Officer | ... | Badnapur    |

### Divisional Level

- |  |     |            |
|--|-----|------------|
| 1. Superintending Agricultural Officer, Aurangabad Division.                       |     | Aurangabad |
| 2. Personal Assistant to Superintending Agricultural Officer, Aurangabad Division. |     | do.        |
| 3. Deputy Director of Agriculture (Engineering).                                   |     | do.        |
| 4. Agricultural Engineer   | ..  | do.        |
| 5. Deputy Director of Agriculture (Research and Education).                        |     | do.        |
| 6. Plant Protection Officer  | ... | do.        |
| 7. Divisional Supervisor (Varietal-cum-Fertiliser Trial Scheme).                   |     | do.        |
| 8. Assistant Statistician (Kharif and Rabi Campaign).                              |     | do.        |
| 9. Assistant Plant Protection Officer (Horticulture).                              |     | do.        |
| 10. Assistant Horticultural Development Officer.                                   |     | do.        |
| 11. Assistant Accounts Officer   | ... | do.        |
| 12. Land Utilization Officer   | ... | do.        |

### District Level

#### ZILLA PARISHAD ESTABLISHMENT

- |   |     |            |
|---|-----|------------|
| 1. Parishad Agricultural Development Officer, Zilla Parishad. |     | Ahmednagar |
| 2. District Agricultural Officer                              | ..  | do.        |
| 3. Assistant District Agricultural Officer                    | ..  | do.        |
| 4. Campaign Officer   | ... | do.        |

## AURANGABAD DISTRICT—contd.

## Other sections of the Agricultural Department

SOIL CONSERVATION SCHEME		Headquarter
1.	Divisional Soil Conservation Officer ...	Aurangabad
2.	Sub-Divisional Soil Conservation Officer ...	do.
3.	Do. ...	Vaijapur.
4.	Do. ...	Jalna.
5.	Do. ...	Bhokarmahal.

## EDUCATIONAL INSTITUTIONS

- |    |  |            |
|----|--|------------|
| 1. | Principal, Soil Conservation Training Institute. | Aurangabad |
| 2. | Principal, Gramsevak Training Centre ...         | Jalna.     |

## AGRICULTURAL RESEARCH STATIONS

- |    |  |             |
|----|--|-------------|
| 1. | Officer-in-Charge, Fruit Experimental Station.                   | Aurangabad. |
| 2. | Officer-in-Charge, Crop Research Station.                        | Badnapur.   |
| 3. | Officer-in-Charge, Bajri Research Station.                       | Rotegaon    |
| 4. | Officer-in-Charge, Trial-cum-Demonstration, Farm (Dheku Project) | Pakhari.    |

## TALUKA SEED MULTIPLICATION FARMS

- |     |  |              |
|-----|--|--------------|
| 1.  | The Agricultural Supervisor, In-charge, Taluka Seed Multiplication Farm. | Harsul       |
| 2.  | Do. ....   | Narsinghpur. |
| 3.  | Do. ...  | Patharwala   |
| 4.  | Do. ....   | Pakhora.     |
| 5.  | Do. ...  | Vaijapur     |
| 6.  | Do. ...  | Isarwadi     |
| 7.  | Do. ...  | Samangaon.   |
| 8.  | Do. ...  | Wadigodri.   |
| 9.  | Agricultural Assistant, In-charge, Taluka Seed Multiplication Farm.      | Sillod.      |
| 10. | Do. ...  | Bhokardan    |
| 11. | Do. ...  | Dhanawat.    |
| 12. | Do. ...  | Gaoleborgaon |

**BHANDARA DISTRICT***District Level***ZILLA PARISHAD ESTABLISHMENT***Headquarter*

- |   |          |
|---|----------|
| 1. Parishad Agricultural Development Officer.           | Bhandara |
| 2. Chief Officer, Package Programme ..                  | do.      |
| 3. District Agricultural Information Officer ...        | do.      |
| 4. Assistant District Agricultural Information Officer. | do.      |
| 5. Technical Officer ...                                | do.      |
| 6. Additional District Agricultural Officer ...         | do.      |
| 7. Agronomist-cum-Farm Management Specialist.           | do.      |
| 8. Plant Protection Specialist ...                      | do.      |
| 9. Horticultural Specialist ...                         | do.      |
| 10. Assistant Registrar, Co-operative Societies.        | do.      |
| 11. Assistant Accounts Officer ..                       | do.      |
| 12. Agricultural Engineer ...                           | do.      |
| 13. Assistant Agricultural Engineer ...                 | do.      |
| 14. Irrigation Specialist ...                           | do.      |
| 15. Assistant Statistician ...                          | do.      |
| 16. Superintendent Fisheries ...                        | do.      |
| 17. District Agricultural Officer ...                   | do.      |
| 18. Assistant District Agricultural Officer ...         | do.      |

*Other sections of the Agricultural Department***SOIL CONSERVATION SCHEME***Head Quarter*

- |   |          |
|---|----------|
| 1. Sub-Divisional Soil Conservation Officer ... | Bhandara |
|---|----------|

**EDUCATIONAL INSTITUTIONS**

- |  |           |
|--|-----------|
| 1. Superintendent, Agricultural School ... | Gangazari |
|--|-----------|

## BHANDARA DISTRICT—contd.

*Other sections of the Agricultural Department—contd.*

TALUKA SEED MULTIPLICATION FARMS		<i>Headquarter</i>
1.	Agricultural Supervisor, Incharge, Taluka	Dongargaon.
	Seed Multiplication Farm.	
2.	Do.	... Pahela
3.	Do.	... Amgaon
4.	Do.	... Sakoli
5.	Do.	... Deori.
6.	Do.	... Keranja

---

**BHIR DISTRICT***District Level*

<b>ZILLA PARISHAD ESTABLISHMENT</b>		<i>Headquarter</i>
1. Parishad Agricultural Development Officer.	Officer.	Bhir.
2. District Agricultural Officer	...	do.
3. Assistant District Agricultural Officer.	...	do.
4. Campaign Officer	...	do.

*Other Sections of the Agricultural Department.***SOIL CONSERVATION SCHEME**

1. Divisional Soil Conservation Officer	..	Bhir
2. Sub-Divisional Soil Conservation Officer	..	do.
3. Do.	...	Paithan
4. Do.	...	Pathri
5. Do.	...	Patoda
6. Do.	...	Ashti
7. Do.	...	Gevrai

**EDUCATIONAL INSTITUTIONS**

1. Superintending, Agricultural School	...	Mominabad
--	-----	-----------

**AGRICULTURAL RESEARCH STATIONS** .. Bhir.

1. Officer Incharge, Trial-cum-Demonstration Farm (Bendsurda Project)	Bhir
---	------

**TALUKA SEED MULTIPLICATION FARMS**

1. Agricultural Supervisor, In-charge Seed Multiplication Farm.	Taluka	Mominabad (Ambejoga)
2. Do.	..	Sidod
3. Do.	..	Khamgaon
4. Do.	..	Jalgaon
5. Agricultural Assistant, In-charge Seed Multiplication Farm.	Taluka	Rajuri
6. Do.	..	Kaij Manjlegaon.

**BULDHANA DISTRICT***District Level***ZILLA PARISHAD ESTABLISHMENT** *Headquarter*

- |   |          |          |
|---|----------|----------|
| 1. Parishad Agricultural Development Officer. | Officer. | Buldhana |
| 2. District Agricultural Officer              | ...      | do.      |
| 3. Assistant District Agricultural Officer    | ...      | do.      |
| 4. Campaign Officer                           | ...      | do.      |

*Other Sections of the Agricultural Department***SOIL CONSERVATION SCHEME**

- |   |     |          |
|---|-----|----------|
| 1. Sub-Divisional Soil Conservation Officer | ... | Buldhana |
| 2. Do.                                      | ... | Khamgaon |
| 3. Do.                                      | ... | Mehekar  |

**EDUCATIONAL INSTITUTIONS**

- |   |     |          |
|---|-----|----------|
| 1. Principal, Gramsevak Training Centre | ... | Buldhana |
|---|-----|----------|

**AGRICULTURAL RESEARCH STATIONS**

- |                                    |     |     |
|------------------------------------|-----|-----|
| 1. Superintendent, Government Farm | ... | do. |
|------------------------------------|-----|-----|

**TALUKA SEEDS MULTIPLICATION FARM.**

- |   |        |                   |
|---|--------|-------------------|
| 1. Agricultural Supervisor, In-charge Seed Multiplication Farm. | Taluka | Asalgaon          |
| 2. Do.  | ...    | Warwat Khanderao. |
| 3. Do.  | ...    | Pimpalgaon Raja.  |
| 4. Do.  | ...    | Shegaon           |
| 5. Do.  | ...    | Sindkhed—Raja.    |
| 6. Agricultural Assistant, In-charge Seed Multiplication Farm.  | Taluka | Deulgaon Mahi     |
| 7. Do.  | ...    | Selsur            |
| 8. Do.  | ...    | Malkapur          |
| 9. Do.  | ...    | Nandura           |



## CHANDA DISTRICT

### *District Level*

#### ZILLA PARISHAD ESTABLISHMENT *Headquarter*

- |   |          |        |
|---|----------|--------|
| 1. Parishad Agricultural Development Officer. | Officer. | Chanda |
| 2. District Agricultural Officer              | ...      | do.    |
| 3. Assistant District Agricultural Officer    | ...      | do.    |
| 4. Campaign Officer                           | ...      | do.    |

#### *Other Sections of the Agricultural Department*

#### SOIL CONSERVATION SCHEME

- |   |        |
|---|--------|
| 1. Sub-Divisional Soil Conservation Officer ... | Warora |
|---|--------|

#### EDUCATIONAL INSTITUTIONS

- |   |     |           |
|---|-----|-----------|
| 1. Superintendent, Agricultural School                | ... | Chanda    |
| 2. Principal, Gramsevak Training Centre               | ... | Sindewahi |
| 3. Chief Instructress, Home Science Wing              | ... | do.       |
| 4. Chief Instructor, Workshop Wing (Training Centre). | ... | do.       |

#### AGRICULTURAL RESEARCH STATIONS

- |  |                          |
|--|--------------------------|
| 1. Officer In-charge, Agriculture Research Station (Farm). | Sindewahi Tal-Brahmapur. |
|--|--------------------------|

#### TALUKA SEED MULTIPLICATION FARMS

- |   |        |              |
|---|--------|--------------|
| 1. Agricultural Supervisor, In-charge Seed Multiplication Farm. | Taluka | Bothli.      |
| 2. Do.  | ...    | Sonapur      |
| 3. Do.  | ...    | Vihad        |
| 4. Do.  | ...    | Ekarjuna     |
| 5. Do.  | ...    | Chaunala     |
| 8. Do.  | ...    | Vithalwada   |
| 7. Do.  | ...    | Maldongri    |
| 8. Agricultural Assistant, In-charge Seed Multiplication Farm.  | Taluka | Aheri        |
| 9. Do.  | ...    | Randhanpeth. |

**DHULIA DISTRICT***District Level***ZILLA PARISHAD ESTABLISHMENT***Headquarter*

- |   |         |
|---|---------|
| 1. Parishad Agricultural Development Officer. | Dhulia  |
| 2. District Agricultural Officer              | .. do.  |
| 3. Assistant District Agricultural Officer    | ... do. |
| 4. Campaign Officer                           | ... do. |

*Other Sections of the Agricultural Department***SOIL CONSERVATION SCHEME**

- |   |                |
|---|----------------|
| 1. Divisional Soil Conservation Officer                                       | ... Dhulia     |
| 2. Sub-Divisional Soil Conservation Officer<br>(Sub-Division, Dhulia-South).  | .. do.         |
| 3. Sub-Divisional, Soil Conservation Officer<br>(Sub-Division, Dhulia-North). | do.            |
| 4. Sub-Divisional Soil Conservation Officer                                   | ... Sindkheda. |
| 5. Do.  | Dondiacha      |
| 6. Do.  | Nandurbar.     |

**EDUCATIONAL INSTITUTIONS**

- |  |            |
|--|------------|
| 1. Superintendent, Agricultural School | ... Dhulia |
| 2. Principal, College of Agriculture   | ... Do.    |

**AGRICULTURAL RESEARCH STATIONS**

- |  |        |
|--|--------|
| 1. Officer-in-Charge, Agricultural Research Station. | Dhulia |
| 2. Officer In-Charge, Grass Research Station.        | Do.    |

**TALUKA SEED MULTIPLICATION FARMS**

- |   |                  |
|---|------------------|
| 1. Agricultural Supervisor, In-charge Seed Multiplication Farm. | Taluka Sindkheda |
| 2. Do.  | - Pimpri         |
| 3. Do.  | - Amoda          |

## DHULIA DISTRICT—contd.

*Other sections of the Agricultural Department—contd.*

TALUKA SEED MULTIPLICATION FARMS—contd.		Headquarter
4.	Agricultural Supervisor In-Charge Taluka Seed Multiplication Farm.	Kalambu
5.	Do.	... Taloda.
6.	Do.	... Akkalkuwa
7.	Do.	... Nawapur.
8.	Agricultural Assistant, In-charge Taluka Seed Multiplication Farm.	Sakri
9.	Do.	Roshmal

## DEVELOPMENT SCHEME

1.	Assistant Oil Seeds Extension Officer	... Dhulia
----	---------------------------------------	------------

---

**JALGAON DISTRICT***State Level***CROP SPECIALIST**

1. Oilseeds Specialist

Headquarter

... Jalgaon

*District Level***ZILLA PARISHAD ESTABLISHMENT**

1. Parishad Agricultural Development Officer.

Jalgaon

3. District Agricultural Officer

... do.

3. Assistant District Agricultural Officer

... do.

4. Campaign Officer

... do.

*Other Sections of the Agricultural Department***SOIL CONSERVATION SCHEME**

1. Divisional Soil Conservation Officer

... Jalgaon

2. Sub-Divisional Soil Conservation Officer

... do.

3. Do.

... Chalisgaon

4. Do.

... Amalner

5. Do.

... Jamner.

6. Do.

... Parola

**EDUCATIONAL INSTITUTIONS**

1. Principal, Soil Conservation Training Institute.

Chalisgaon

2. Principal, Gramsevak Training Centre

... Jalgaon

**RESEARCH SCHEMES**

1. Cotton Breeder

... Jalgaon

2. Oilseeds Research Officer

... do.

**AGRICULTURAL RESEARCH STATIONS**

1. Officer In-charge, Agricultural Research Station

Jalgaon

2. Do.

... Chopde

## JALGAON DISTRICT—contd.

AGRICULTURAL RESEARCH STATIONS—contd. Headquarter

- |    |   |          |
|----|---|----------|
| 3. | Officer-In-charge, Trial-cum-Demonstration Farm.  | Bhadgaon |
| 4. | Officer-In-charge Banana Research Station.        | Savada   |
| 5. | Officer-In-Charge, Agricultural Research Station. | Chopda   |

## TALUKA SEED MULTIPLICATION FARMS

- |     |  |                        |
|-----|--|------------------------|
| 1.  | Agricultural Supervisor, In-charge, Taluka Seed Multiplication Farm. | Jalgaon                |
| 2.  | Do. ...  | Jamner                 |
| 3.  | Do. ...  | Patonda                |
| 4.  | Do. ...  | Chopda                 |
| 5.  | Do. ...  | Pachora                |
| 6.  | Do. ...  | Sakegaon.              |
| 7.  | Do. ...  | Parola                 |
| 8.  | Agricultural Assistant, In-charge Taluka Seed Multiplication Farm.   | Yawal                  |
| 9.  | Do. ...  | Rawer                  |
| 10. | Do. ...  | Chalisgaon             |
| 11. | Do. ...  | Tongaon                |
| 12. | Do. ...  | Erandol<br>(Dorangaon) |
| 13. | Do. ...  | Edlabad                |

## DEVELOPMENT SCHEMES

- |    |   |          |
|----|---|----------|
| 1. | Oilseeds Extension Officer  | Jalgaon  |
| 2. | Assistant Oilseeds Extension Officer, In-charge, Package Programme. | Pachora. |
| 3. | Cotton Extension Officer  | Jalgaon  |
-

**KOLABA DISTRICT***State Level***CROP SPECIALIST***Headquarter*

1. Rice Specialist

Karjat

*District Level***ZILLA PARISHAD ESTABLISHMENT :**

1. Parishad Agricultural Development Officer. Alibag
2. District Agricultural Officer ... do.
3. Assistant District Agricultural Officer ... do.
4. Campaign Officer ... do.

*Other Sections of the Agricultural Department***SOIL CONSERVATION SCHEME**

1. Divisional Soil Conservation Officer ... Alibag

**EDUCATIONAL INSTITUTIONS**

1. Superintendent, Agricultural School ... Roha

**AGRICULTURAL RESEARCH STATIONS**

1. Officer-In-Charge, Agricultural Research Station. Karjat
2. Do. ... Panwel
3. Do. ... Khopoli

**TALUKA SEED MULTIPLICATION FARMS**

1. Agricultural Supervisor, In-Charge, Taluka Seed Multiplication Farm. Pargaon
2. Agricultural Assistant, In-Charge, Taluka Seed Multiplication Farm. Killa
3. Do. ... Veshvi
4. Do. ... Lonare.
5. Do. ... Kondivate

## KOLHAPUR DISTRICT

### *District Level*

ZILLA PARISHAD ESTABLISHMENT	<i>Headquarter</i>
1. Parishad Agricultural Development Officer.	Kolhapur
2. District Agricultural Officer	... Do.
3. Assistant District Agricultural Officer	... Do.
4. Campaign Officer	.. Do.

### *Other Sections of the Agricultural Department*

#### SOIL CONSERVATION SCHEME

1. Divisional Soil Conservation Officer	.. Kolhapur
2. Sub-Divisional Soil Conservation Officer	... Do.
3. Do.	... Jaysingpur
4. Do.	... Ajara
5. Do. (Terracing)	... Shahuwadi

#### EDUCATIONAL INSTITUTIONS

1. Superintendent, Agricultural School	... Kolhapur
2. Principal, Gramsevak Training Centre	.. Do.
3. Principal, College of Agriculture	... Do.

#### RESEARCH SCHEME

1. Agronomist, Regional Sugarcane Research Station.	Kolhapur
---	----------

#### AGRICULTURAL RESEARCH STATIONS

1. Officer-in-charge, Regional Sugarcane Research Station.	Kolhapur
2. Officer-In-Charge, Government Fruit Orchards.	Ajara
3. Officer-In-Charge, Agricultural Research Station.	Gadhinglaj
4. Do.	... Radhanagari

KOLHAPUR DISTRICT—*contd.*

TALUKA SEED MULTIPLICATION FARMS		<i>Headquarter</i>
1. Agricultural Supervisor, in-charge Seed Multiplication Farms,	Taluka	Radhanagari
2. Do.	...	Gadhinglaj
3. Agricultural Assistant	...	Ajara
4. Do.	...	Shirgaon
5. Do.	...	Uchagaon
6. Do.	...	Jaysingpur
<b>DEVELOPMENT SCHEMES</b>		
1. Sugarcane Development Officer	...	Kolhapur

---



## NAGPUR DISTRICT

*State Level*

SPECIALISTS	<i>Headquarter</i>
1. Horticulturist, in-charge Citrus Development Scheme.	Nagpur
2. Soil Chemist, in-charge Soil Testing Laboratory, College of Agriculture, Nagpur.	Do.

*Divisional Level*

1. Superintending Agricultural Officer ...	Nagpur
2. P. A. to S. A. O., Nagpur Division ...	Do.
3. Deputy Director of Agriculture (Engineering).	Do.
4. Agricultural Engineer ...	Do.
5. Deputy Director of Agriculture (Research and Education).	Do.
6. Plant Protection Officer ...	Do.
7. Divisional Supervisor (Varietal Trial Scheme).	Do.
8. Crop Competition Officer ...	Do.
9. Assistant Statistician (Kharif and Rabi Campaign.)	Do.
10. Assistant Compost Development Officer ...	Do.
11. Tractor Engineer (Machine Tractor Unit).	Do.

*District Level*

## ZILLA PARISHAD ESTABLISHMENT

1. Parishad Agricultural Development Officer.	Nagpur
2. District Agricultural Officer ...	Do.
3. Assistant District Agricultural Officer ...	Do.
4. Campaign Officer ...	Do.

## NAGPUR DISTRICT

### *Other Sections of the Agricultural Department*

<b>HEADS OF THE EDUCATIONAL INSTITUTIONS</b>		<i>Headquarter</i>
1.	Principal, College of Agriculture	... Nagpur
2.	Principal Gramsevak Training Centre	... Tharsa
3.	Superintendent, Mali Training School	... Maharaj Bag, Nagpur

#### **SOIL CONSERVATION SCHEME**

1.	Divisional Soil Conservation Officer	... Nagpur
2.	Sub-Divisional Soil Conservation Officer.	Katol
3.	Do.	... Saoner
4.	Do.	... Umrer

#### **AGRICULTURAL RESEARCH STATIONS**

1.	Superintendent, Agricultural College Farm.	Nagpur
2.	Superintendent, Government Experimental Farm.	Tharsa
3.	Officer-in-charge, Regional Fruit Research Station.	Tharsa

#### **TALUKA SEED MULTIPLICATION FARMS**

1.	Agricultural Supervisor, in-charge Taluka Seed Multiplication Farm.	Panjri-Parsodi
2.	Do.	... Narkhed
3.	Do.	... Wandali
4.	Do.	... Susundri
5.	Do.	... Bhendala
6.	Do.	... Dumri
7.	Do.	... Mokhada
8.	Do.	... Bhojapur
9.	Do.	... Marodi

---

**NANDED DISTRICT***State Level*

<b>CROP SPECIALISTS</b>	<i>Headquarter</i>
1. Cotton Specialist, the Cotton Research Station.	Nanded
2. Cotton Breeder	... Do.
3. Assistant Statistician	.. Do.

*District Level***ZILLA PARISHAD ESTABLISHMENT**

1. Parishad Agricultural Development Officer.	Nanded.
2. District Agricultural Officer	... Do.
3. Assistant District Agricultural Officer	... Do.
4. Campaign Officer	... Do.

*Other Sections of the Agricultural Department***HEADS OF THE EDUCATIONAL INSTITUTIONS**

1. Principal, Soil Conservation Training Institute.	Nanded
2. Superintendent, Agricultural School	... Do.

**SOIL CONSERVATION SCHEME**

1. Sub-Divisional Soil Conservation Officer	... Do.
2. Do.	... Kandhar
3. Do.	... Bhokar

**TALUKA SEED MULTIPLICATION FARMS**

1. Agricultural Supervisor, in-charge Taluka Seed Multiplication Farm.	Dhanegaon
2. Do.	... Kasarali
3. Do.	... Manatha
4. Do.	... Mukhed
5. Do.	... Pardi
6. Do.	... Kinwat
7. Agricultural Assistant, in-charge Taluka Seed Multiplication Farm.	Deglur
8. Do.	... Bhokar
9. Assistant Cotton Extension Officer	... Nanded

## NASIK DISTRICT

<i>Divisional Level</i>	<i>Headquarter</i>
1. Superintending Agricultural Officer, Bombay Division.	Nasik
2. Personal Assistant to S. A. O., Bombay Division.	Do.
3. Deputy Director of Agriculture (Engineering).	Do.
4. Agricultural Engineer ...	Do.
5. Deputy Director of Agriculture (Research and Education).	Do.
6. Plant Protection Officer ...	Do.
7. Divisional Supervisor (Varietal Trial Scheme).	Do.
8. Crop Competition Officer ...	Do.
9. Assistant Statistician (Kharif and Rabi Campaign).	Do.
10. Assistant Compost Development Officer ...	Do.

*District Level*

## ZILLA PARISHAD ESTABLISHMENT

1. Parishad Agricultural Development Officer.	Nasik
2. District Agricultural Officer ...	Do.
3. Assistant District Agricultural Officer ...	Do.
4. Campaign Officer ...	Do.

*Other Sections of the Agricultural Department*

## SOIL CONSERVATION SCHEME

1. Divisional Soil Conservation Officer ...	Nasik
2. Sub-Divisional Soil Conservation Officer ...	Sinnar
3. Do. ...	Chandwad
4. Do. ...	Malegaon
5. Do. ...	Yeola
6. Do. ...	Nasik

NASIK DISTRICT—contd.

SOIL CONSERVATION SCHEME—contd. *Headquarter*

- |     |  |           |
|-----|--|-----------|
| 7.  | Sub-Divisional Soil Conservation Officer ... | Satana    |
| 8.  | Do. ...                                      | Lasalgaon |
| 9.  | Do. ...                                      | Nandgaon  |
| 10. | Do. ...                                      | Igatpuri  |

EDUCATIONAL INSTITUTIONS

- |    |  |          |
|----|--|----------|
| 1. | Principal, Soil Conservation Training Institute. | Nasik    |
| 2. | Superintendent, Agricultural School ...          | Malegaon |

RESEARCH SCHEME

- |    |  |        |
|----|--|--------|
| 1. | Plant Breeder and Officer-in-charge Agricultural Research Station. | Niphad |
| 2. | Assistant Wheat Breeder, Co-ordinated Wheat-Rust Research Scheme.  | Niphad |
| 3. | Assistant Plant Pathologist, Nematodes of Beetle-vines.            | Nasik  |

AGRICULTURAL RESEARCH STATIONS

- |    |  |                |
|----|--|----------------|
| 1. | Officer-in-charge, Agricultural Research Station.              | Igatpuri       |
| 2. | Do. Do. ...  | Niphad         |
| 3. | Officer-in-charge, Sugarcane Research Sub-Station.             | Lakhmapur      |
| 4. | Officer-in-charge, Agricultural Research Station (Beetlevine). | Wadner-Bhairao |
| 5. | Officer-in-charge, Model Agronomic Research Station.           | Lakhmapur      |

TALUKA SEED MULTIPLICATION FARMS

- |    |   |                        |
|----|---|------------------------|
| 1. | Agricultural Supervisor, in-charge Taluka Seed Multiplication Farm. | Makhmalabad            |
| 2. | Do.   | Pimpri                 |
| 3. | Do.   | Dindori                |
| 4. | Do.   | Pimpalgaon<br>(Bisant) |
| 5. | Do.   | Sakore                 |

NASIK DISTRICT—*contd.*

<b>TALUKA SEED MULTIPLICATION FARMS—<i>contd.</i></b>		<i>Headquarter</i>
6.	Agricultural Supervisor, in-charge Taluka Seed Multiplication Farm.	Muslgaon
7.	Do.	... Chandor
8.	Do.	... Lakhmapur
9.	Do.	... Umrane
10.	Do.	... Yeola
11.	Do.	... Harsul
12.	Agricultural Assistant, in-charge Taluka Seed Multiplication Farm.	Surgana
13.	Do.	... Nandgaon
14.	Do.	... Igatpuri
15.	Do.	... Baswant
<b>DEVELOPMENT SCHEMES</b>		
1.	Cotton Development Officer	... Malegaon

---

## OSMANABAD DISTRICT

### *District Level*

#### ZILLA PARISHAD ESTABLISHMENT Headquarter

- |   |     |           |
|---|-----|-----------|
| 1. Parishad Agricultural Development Officer. | ... | Osmanabad |
| 2. District Agricultural Officer              | ... | Do.       |
| 3. Assistant District Agricultural Officer    | ... | Do.       |
| 4. Campaign Officer                           | ... | Do.       |

#### *Other Sections of the Agricultural Department*

#### SOIL CONSERVATION SCHEME

- |   |     |           |
|---|-----|-----------|
| 1. Divisional Soil Conservation Officer     | ... | Osmanabad |
| 2. Sub-Divisional Soil Conservation Officer | ... | Do.       |
| 3. Do.                                      | --- | Tuljapur  |
| 4. Do.                                      | --- | Parandha  |
| 5. Do.                                      | ... | Latur     |
| 6. Do.                                      | ... | Ausa      |
| 7. Do.                                      | --- | Omarga    |

#### HEADS OF THE EDUCATIONAL INSTITUTIONS

- |  |     |       |
|--|-----|-------|
| 1. Superintendent, Agricultural School | ... | Latur |
|--|-----|-------|

#### DEVELOPMENT SCHEMES

- |   |     |          |
|---|-----|----------|
| 1. Assistant Oilseeds Extension Officer, in-charge Package Programme. | ... | Ahmedpur |
|---|-----|----------|

#### AGRICULTURAL RESEARCH STATIONS

- |  |     |            |
|--|-----|------------|
| 1. Officer-in-charge, Cotton Breeding Station...       | ... | Somnathpur |
| 2. Officer-in-charge Paddy Research Station            | ... | Tuljapur   |
| 3. Officer-in-charge T. C. D. Farm (Khanapur project). | ... | Songiri    |
| 4. Officer-in-charge Oilseeds Research Station.        | ... | Latur      |

OSMANABAD DISTRICT—*contd.*

TALUKA SEED MULTIPLICATION FARMS— <i>contd.</i>		<i>Headquarter</i>
1.	Agricultural Supervisor, in-charge Taluka Seed Multiplication Farm.	Thair
2.	Do. ...	Yermala
3.	Agricultural Assistant in-charge Taluka Seed Multiplication Farm.	Chakur
4.	Do.	Ausa
5.	Agricultural Supervisor in-charge Taluka Seed Multiplication Farm.	Warwanti
6.	Do. ...	Somnathpur
7.	Do. ...	Songiri
8.	Do. ...	Tuljapur
9.	Do. ...	Wasi



## PARBHANI DISTRICT

### *State Level*

#### CROP SPECIALISTS

*Headquarter*

- |                       |     |          |
|-----------------------|-----|----------|
| 1. Millets Specialist | ... | Parbhani |
| 2. Cotton Breeder     | ... | Do.      |

### *District Level*

#### ZILLA PARISHAD ESTABLISHMENT

- |   |     |          |
|---|-----|----------|
| 1. Parishad Agricultural Development Officer. | ... | Parbhani |
| 2. District Agricultural Officer              | ... | Do.      |
| 3. Assistant District Agricultural Officer    | ... | Do.      |
| 4. Campaign Officer                           | ... | Do.      |

### *Other Sections of the Agricultural Department*

#### SOIL CONSERVATION SCHEME

- |   |     |          |
|---|-----|----------|
| 1. Divisional Soil Conservation Officer     | ... | Parbhani |
| 2. Sub-Divisional Soil Conservation Officer | ... | Do.      |
| 3. Do.                                      | ... | Hingoli  |
| 4. Do.                                      | ... | Jintur   |

#### HEADS OF THE EDUCATIONAL INSTITUTIONS

- |   |     |          |
|---|-----|----------|
| 1. Principal, College of Agriculture    | ... | Parbhani |
| 2. Principal, Gramsevak Training Centre | ... | Do.      |
| 3. Superintendent, Agricultural School  | ... | Do.      |

#### AGRICULTURAL RESEARCH STATIONS

- |   |     |          |
|---|-----|----------|
| 1. Officer-in-charge, Mehboob Bag Farm                              | ... | Parbhani |
| 1. Officer-in-charge Trial-cum-Demonstration Farm (Poorna Project). |     | Golegaon |
| 3. Officer-in-charge Government Main Farm.                          |     | Parbhani |

## PARBHANI DISTRICT—contd.

TALUKA SEED MULTIPLICATION FARMS		Headquarter
1.	Agricultural Supervisor, in-charge Taluka Seed Multiplication Farm.	Parbhani
2.	Do.	... Jintur
3.	Do.	... Hingoli
4.	Do.	... Chikhalthana
5.	Do.	... Bijaram
6.	Do.	... Akhada-Balapur
7.	Do.	... Basmath
8.	Do.	... Gangakhed
9.	Do.	.. Awatgaon-Kendali

---

## POONA DISTRICT

### State Level

#### DIRECTORS

	<i>Headquarter</i>
1. Director of Agriculture, Department of Agriculture, M. S.	Central Bldg. Poona-1.
2. Additional Director of Agriculture, Department of Agriculture, M. S.	Do.

#### JOINT DIRECTORS OF AGRICULTURE

1. Joint Director of Agriculture I, Department of Agriculture, M. S.	Central Bldg. Poona-1.
2. Joint Director of Agriculture II, Department of Agriculture, M. S.	Do.
3. Joint Director of Agriculture III, Department of Agriculture, M. S.	Do.
4. Joint Director of Agriculture (Extension).	Do.
5. Joint Director of Agriculture (Horticulture).	Do.

#### DEPUTY DIRECTORS OF AGRICULTURE

1. Deputy Director of Agriculture I, Department of Agriculture, M. S.	Central Bldg. Poona-1.
2. Deputy Director of Agriculture II, Department of Agriculture, M. S.	Do.
3. Deputy Director of Agriculture III, Department of Agriculture, M. S.	Do.
4. Deputy Director of Agriculture IV, Department of Agriculture, M. S.	Do.
5. Deputy Director of Agriculture V, Department of Agriculture, M. S.	Do.
6. Deputy Director of Agriculture (Planning), Department of Agriculture, M. S.	Do.

#### OTHER STATE LEVEL OFFICERS

1. Chief Plant Protection Officer	Central Bldg. Poona-1.
2. Cotton Extension Officer, Department of Agriculture, M. S.	Do.

POONA DISTRICT—*contd.*

OTHER STATE LEVEL OFFICERS— <i>contd.</i>		<i>Headquarter</i>
3. Compost Development Officer, Department of Agriculture, M. S.		Central Bldg Poona-1.
4. Regional Fertilizer Officer, Department of Agriculture, M. S.		Do.
5. Statistician,	..	Do.
6. Deputy Statistician	...	Do.
7. Horticultural Development Officer	...	Do.
8. Agricultural Information Officer	...	Do.
9. Assistant Agricultural Information Officer.		Do.
10. Assistant Horticultural Development Officer.		Do.
11. Assistant Cotton Extension Officer	..	Do.
12. Assistant Entomologist	...	Do.
<b>SPECIALISTS</b>		
1. Economic Botanist	...	Poona-5.
2. Agricultural Entomologist	...	Do.
3. Plant Pathologist	..	Do.
4. Agricultural Chemist	...	Do.
5. Agricultural Bacteriologist	...	Do.
6. Agricultural Economist	...	Do.
7. Agronomist	...	Do.
8. Horticulturist	..	Do.
9. Agricultural Engineer	...	Do.
10. Research Engineer	...	Do.
11. Soil Chemist in-charge Soil Testing Laboratory.		Do.
<b>RESEARCH OFFICERS</b>		
1. Assistant Horticulturist, College of Agriculture.		Poona-5.
2. Bacteriologist, N. F. Scheme	...	Do.
3. Research Officer Incharge, Grass Scheme	...	Do.
4. Vegetable Research Officer	...	Do.
<i>Divisional Level</i>		
1. Superintending Agricultural Officer, College of Agriculture.		Poona-5.
2. P. A. to Superintending Agricultural Officer, Poona Division.		Do.

## POONA DISTRICT—contd.

RESEARCH OFFICERS—contd.		<i>Headquarter</i>
3. Deputy Director of Agriculture (Engineering).		Poona-5.
4. Agricultural Engineer	...	Do.
5. Deputy Director of Agriculture, (Research and Education).		Do.
6. Plant Protection Officer	...	Do.
7. Divisional Supervisor (Varietal Trial Scheme).	...	Do.
8. Crop Competition Officer	...	Do.
9. Assistant Statistician (Kharif and Rabi Campaign).		Do.
10. Assistant Compost Development Officer	..	Do.

*District Level*

## ZILLA PARISHAD ESTABLISHMENT

1. Parishad Agricultural Development Officer.		Poona-1.
2. District Agricultural Officer	...	Do.
3. Assistant District Agricultural Officer	...	Do.
4. Campaign Officer	...	Do.

*Other Sections of the Agriculture Department*

## HEADS OF THE EDUCATIONAL INSTITUTIONS

1. Principal, College of Agriculture	..	Poona-5.
2. Superintendent, Agricultural School	...	Manjri
3. Principal, Gramsevak Training Centre	...	Do.
4. Chief Instructress, Home Science Wing	...	Do.
5. Chief Instructor, Workshop Training Centre.		Do.

## SOIL CONSERVATION SCHEME

1. Divisional Soil Conservation Officer	...	Poona-1.
2. Sub-Divisional Soil Conservation Officer	...	Poona-2.
3. Do.	...	Shikrapur
4. Do.	...	Junnar
5. Do.	...	Shirur

## POONA DISTRICT—contd.

SOIL CONSERVATION SCHEME—contd.		Headquarter
6.	Sub-Divisional Soil Conservation Officer ...	Poona (Terracing).
7.	Do.	... Baramati
8.	Do.	... Dhond
9.	Do.	... Indapur
10.	Do.	... Narayangaon

## AGRICULTURAL RESEARCH STATIONS

1.	Superintendent, Agricultural College Farm.	Poona-5.
2.	Officer-in-charge, Ganeshkhind Fruit Experimental Station.	Poona-7.
3.	Officer-in-charge, Modibag Gardan ...	Poona-5.
4.	Officer-in-charge, Agricultural Research Station.	Wadgaon
5.	Do.	... Lonawala

## TALUKA SEED MULTIPLICATION FARMS

1.	Agricultural Supervisor, in-charge Taluka Seed Multiplication Farm.	Agar
2.	Do.	... Ghodegaon
3.	Do.	... Chandoli
4.	Do.	... Shirur
5.	Do.	... Khadakwasla
6.	Do.	... Sangvi
7.	Do.	... Indapur
8.	Do.	... Dhond
9.	Do.	... Bhukum
10.	Do.	... Jadhavwadi
11.	Do.	... Baramati
12.	Do.	... Amdabad
13.	Agricultural Supervisor, in-charge Taluka Seed Multiplication Farm.	Charoli

---

**RATNAGIRI DISTRICT***Regional Level*

- |   |                    |
|---|--------------------|
|   | <i>Headquarter</i> |
| 1. Horticulture Development Officer, Konkan Region. | Ratnagiri          |

*District Level***ZILLA PARISHAD ESTABLISHMENT**

- |   |           |
|---|-----------|
| 1. Parishad Agricultural Development Officer. | Ratnagiri |
| 2. District Agricultural Officer              | ... Do.   |
| 3. Assistant District Agricultural Officer    | ... Do.   |
| 4. Campaign Officer                           | ... Do.   |

*Other Sections of the Agricultural Department***SOIL CONSERVATION SCHEME**

- |   |                       |
|---|-----------------------|
| 1. Divisional Soil Conservation Officer     | ... Ratnagiri         |
| 2. Sub-Divisional Soil Conservation Officer | ... Do.               |
| 3. Do.                                      | ... Chiplun           |
| 4. Do.                                      | ... Kudal             |
| 5. Do.                                      | (Terracing) Kankawali |
| 6. Do.                                      | .. Khed               |

**HEADS OF THE EDUCATIONAL INSTITUTIONS**

- |  |            |
|--|------------|
| 1. Superintendent, Agricultural School | .. Mirjola |
|--|------------|

**DEVELOPMENT SCHEME**

- |                                  |                |
|----------------------------------|----------------|
| 1. Cashewnut Development Officer | ... Dapoli     |
| 2. Cocoa Development Officer     | ... Sawantwadi |

**AGRICULTURAL RESEARCH STATIONS**

- |   |                                  |
|---|----------------------------------|
| 1. Officer-in-charge, Agricultural Station. | Research (Shirgaon)<br>Ratnagiri |
| 2. Do.                                      | .. Phondaghat                    |
| 3. Do.                                      | .. Hatkhamba                     |

## RATNAGIRI DISTRICT—contd.

AGRICULTURAL RESEARCH STATIONS—contd.		Headquarter
4.	Officer-in-charge, Coconut Research Station.	Ratnagiri
5.	Officer-in-charge, Mango Research Station.	Vengurla
6.	Officer-in-charge, Cashewnut Research Station.	Do.
7.	Officer-in-charge, Dry Farming and Soil Conservation, Research Station.	Awashi

## TALUKA SEED MULTIPLICATION FARMS

1.	Agricultural Supervisor, in-charge Seed Multiplication Officer.	Taluka	Wadgaon
2.	Agricultural Assistant, in-charge Seed Multiplication [Officer] Farm.	Taluka	Niv (Bk.)
3.	Do.	...	Gimawane
4.	Do.	...	Palshet
5.	Do.	...	Pomendi
6.	Do.	...	Mangaon

---



**SANGLI DISTRICT***District Level*

<b>ZILLA PARISHAD ESTABLISHMENT</b>		<i>Headquarters.</i>
1. Parishad Agricultural Development Officer.		Sangli
2. District Agricultural Officer	...	Do.
3. Assistant District Agricultural Officer	...	Do.
4. Campaign Officer	...	Do.

*Other Sections of the Agricultural Department***SOIL CONSERVATION SCHEME**

1. Divisional Soil Conservation Officer	...	Sangli
2. Sub-Divisional Soil Conservation Officer	...	Miraj
3. Do.	...	Jath
4. Do.	...	Vita
5. Do.	...	Islampur

**EDUCATIONAL INSTITUTIONS**

1. Superintendent, Agricultural School	...	Digranj
--	-----	---------

**AGRICULTURAL RESEARCH STATIONS**

1. Officer-in-charge, Agricultural Research Station.		Digranj
2. Officer-in-charge, Turmeric Research Station.		Tasgaon

**TALUKA SEED MULTIPLICATION FARMS**

1. Agricultural Supervisor, in-charge Taluka Seed Multiplication Farm.		Digranj
2. Do.	...	Jath
3. Do.	...	Tasgaon
4. Do.	...	Vita
5. Do.	...	Beur
6. Do.	...	Kupwad
7. Do.	...	Peth
8. Agricultural Assistant, in-charge Taluka Seed Multiplication Farm.		Swantrapur

**SATARA DISTRICT***State Level*

<b>CROP SPECIALISTS</b>		<i>Headquarter</i>
1. Sugarcane Specialist	...	Padegaon
2. Wheat Rust Mycologist, Research Station.	Wheat-Rust	Mahableshwar

*District Level***ZILLA PARISHAD ESTABLISHMENT**

1. Parishad Agricultural Development Officer.	...	Satara
2. District Agricultural Officer	...	Do.
3. Assistant District Agricultural Officer	...	Do.
4. Campaign Officer	...	Do.

*Other Sections of the Agricultural Department***SOIL CONSERVATION SCHEME**

1. Divisional Soil Conservation Officer	...	Satara
2. Sub-Divisional Soil Conservation Officer	...	Do.
3. Do.	...	Phaltan
4. Do.	...	Patan
5. Do.	...	Wai
6. Do.	...	Khindewadi

**HEADS OF EDUCATIONAL INSTITUTIONS**

1. Principal, Soil Conservation Training Institute.		Satara
2. Superintendent, Agricultural School	...	Borgaon

**DEVELOPMENT SCHEME**

1. Assistant Oilseed Extensive Officer	...	Karad
2. Assistant Oilseed Extension Officer, in-charge Package Programme.		Do.

SATARA DISTRICT—*contd.*

## AGRICULTURAL RESEARCH STATIONS

*Headquarter*

- |  |                |
|--|----------------|
| 1. Officer-in-charge, Sugarcane Research Station.    | Padegaon       |
| 2. Officer-in-charge, Agricultural Research Station. | Karad (Mundha) |
| 3. Officer-in-charge, Wheat Rust Research Station.   | Mahableshwar   |

## TALUKA SEED MULTIPLICATION FARMS

- |  |              |
|--|--------------|
| 1. Agricultural Supervisor, in-charge Taluka Seed Multiplication Farm. | Kaloli       |
| 2. Agricultural Assistant, in-charge Taluka Seed Multiplication Farm.  | Shirwal      |
| 3. Do.   | ... Medha    |
| 4. Do.   | ... Kashil   |
| 5. Do.   | ... Palshi   |
| 6. Do.   | ... Dahiwadi |
| 7. Do.   | ... Saidapur |
| 8. Do.   | ... Kadegaon |
| 9. Do.   | ... Vaduj    |
-

**SHOLAPUR DISTRICT***State Level***SUBJECT MATTER SPECIALISTS***Headquarte:*

- |                     |     |          |
|---------------------|-----|----------|
| 1. Soil Specialists | ... | Sholapur |
|---------------------|-----|----------|

*District Level***ZILLA PARISHAD ESTABLISHMENT**

- |   |              |
|---|--------------|
| 1. Parishad Agricultural Development Officer. | Sholapur     |
| 2. District Agricultural Officer              | ... Sholapur |
| 3. Assistant District Agricultural Officer    | ... Sholapur |
| 4. Campaign Officer                           | ... Sholapur |

*Other Sections of the Agricultural Department***SOIL CONSERVATION SCHEME**

- |   |     |                          |
|---|-----|--------------------------|
| 1. Divisional Soil Conservation Officer     | ... | Sholapur                 |
| 2. Do.                                      | ... | Pandharpur               |
| 3. Sub-Divisional Soil Conservation Officer | ... | Sholapur<br>(South Zone) |
| 4. Do.                                      | ... | Do.<br>(North Zone)      |
| 5. Do. (Sub-Division I)                     | ... | Barshi                   |
| 6. Do. (Sub-Division II)                    | ... | Barshi                   |
| 7. Do.                                      | ... | Wairag                   |
| 8. Do.                                      | ... | Pandharpur               |
| 9. Do.                                      | ... | Karmala                  |
| 10. Do.                                     | ... | Sangola                  |
| 11. Do.                                     | ... | Akkalkot                 |
| 12. Do.                                     | ... | Vita                     |
| 13. Do.                                     | ... | Mangalwedha              |
| 14. Do.                                     | ... | Madha                    |

**EDUCATIONAL INSTITUTIONS**

- |   |          |
|---|----------|
| 1. Principal, Soil Conservation Training Institute. | Sholapur |
| 2. Superintendent, Agricultural School              | ... Do.  |

SHOLAPUR DISTRICT—*contd.*

AGRICULTURAL RESEARCH STATIONS		<i>Headquarter</i>
1.	Agricultural Supervisor, in-charge Taluka tion.	Akluj
2.	Do.	... Mulegaon
3.	Do.	... Jeur (Shelgaon)
4.	Do.	.. Mohol

## TALUKA SEED MULTIPLICATION OFFICER

1.	Officer-in-charge, Sugarcane Research Sta- Seed Multiplication Farm.	Sholapur
2.	Do.	Takali
3.	Do.	.. Akkalkot
4.	Do.	... Mohol
5.	Do.	... Shelgaon (Jeur)
6.	Do.	... Kurduwadi
7.	Do.	.. Mangalwedha
8.	Do.	.. Malshiras
9.	Do.	.. Sangola
10.	Do.	... Mulegaon

---

**THANA DISTRICT***District Level*

<b>ZILLA PARISHAD ESTABLISHMENT</b>		<i>Headquarter</i>
1. Parishad Agricultural Development Officer		Thana
2. District Agricultural Officer	...	Do.
3. Assistant District Agricultural Officer	...	Do.
4. Campaign Officer	...	Do.

*Other Sections of the Agricultural Department***SOIL CONSERVATION SCHEME**

- |  |         |        |
|--|---------|--------|
| 1. Sub-Divisional Soil Conservation Officer (Ter.) | Officer | Thana  |
| 2.   | Do.     | .. Pen |

**EDUCATIONAL INSTITUTIONS**

- |  |     |        |
|--|-----|--------|
| 1. Superintendent, Agricultural School | ... | Kosbad |
|--|-----|--------|

**AGRICULTURAL RESEARCH STATIONS**

- |  |  |         |
|--|--|---------|
| 1. Officer-in-charge, Agricultural Research Station. |  | Palghar |
|--|--|---------|

**TALUKA SEED MULTIPLICATION FARMS**

- |   |        |                        |
|---|--------|------------------------|
| 1. Agricultural Supervisor, in-charge Seed Multiplication Farm. | Taluka | Sarvali                |
| 2.  | Do.    | .. Khutal              |
| 3. Agricultural Assistant, in-charge Seed Multiplication Farm.  | Taluka | Palghar                |
| 4.  | Do.    | .. Wada                |
| 5.  | Do.    | .. Bhivan <sup>2</sup> |
-

**WARDHA DISTRICT***District Level*

<b>ZILLA PARISHAD ESTABLISHMENT</b>		<i>Headquarter</i>
1. Parishad Agricultural Development Officer.		Wardha
2. District Agricultural Officer	...	Do.
3. Assistant District Agricultural Officer	...	Do.
4. Campaign Officer	...	Do.

*Other Sections of the Agricultural Department***SOIL CONSERVATION SCHEME**

1. Sub-Divisional Soil Conservation Officer	...	Wardha
2. Do.	..	Arvi
3. Do.	..	

**EDUCATIONAL INSTITUTIONS**

1. Superintendent, Agricultural School	...	Selsura
--	-----	---------

**TALUKA SEED MULTIPLICATION FARMS**

1. Agricultural Supervisor, in-charge Taluka Seed Multiplication Farm.		Selsura
2. Do.	..	Sukli
3. Do.	..	Jamb
4. Agricultural Assistant, in-charge Taluka Seed Multiplication Farm.		Pohana
5. Agricultural Supervisor, in-charge Taluka Seed Multiplication Farm.		Virul
6. Do.	..	Talegaon
7. Do.	..	Ladnapur
8. Do.	..	Nachangaon

---

**YEOTMAL DISTRICT***District Level*

<b>ZILLA PARISHAD ESTABLISHMENT</b>		<i>Headquarter</i>
1.	Parishad Agricultural Development Officer.	Yeotmal
2.	District Agricultural Officer	... Do.
3.	Assistant District Agricultural Officer	... Do.
4.	Campaign Officer	... Do.

*Other Sections of the Agricultural Department***SOIL CONSERVATION SCHEME**

1.	Divisional Soil Conservation Officer	... Yeotmal
2.	Sub-Divisional Soil Conservation Officer	... Yeotmal
3.	Do.	... Pusad
4.	Do.	... Wani
5.	Do.	... Washim
6.	Do.	... Arni
7.	Do.	... Kelapur

**EDUCATIONAL INSTITUTIONS**

1.	Principal, Soil Conservation Training Institute.	Kelapur
2.	Superintendent, Agricultural School	.. Yeotmal

**AGRICULTURAL RESEARCH STATIONS**

1.	Officer-in-charge, Agricultural Research Station.	Yeotmal
----	---	---------

**TALUKA SEED MULTIPLICATION FARM**

1.	Agricultural Supervisor, in-charge Taluka Seed Multiplication Farm.	Nandura
2.	Do.	... Kalamb
3.	Do.	... Warud
4.	Do.	... Nimbala
5.	Do.	... Darvha
6.	Agricultural Supervisor, in-charge Taluka Seed Multiplication Farm.	Belkhed
7.	Do.	... Pandharkawad
8.	Do.	... Ghatanji
9.	Do.	... Sonwadna
10.	Do.	... Karegaon

---



## INDEX

Sr. No.	Offices of the Department	Page
1	2	3
<b>State Level Officers</b>		
1.	Director of Agriculture, M. S., Poona	... 31
2.	Additional Director of Agriculture, M. S., Poona	... 31
3.	Joint Directors of Agriculture, Poona	... 31
<i>Directorate of Agriculture, Poona</i>		
4.	Deputy Directors of Agriculture	... 31
5.	Compost Development Officer	... 32
6.	Statistician	... 32
7.	Deputy Statistician	... 32
8.	Horticulture Development Officer	... 32
9.	Cotton Extension Officer	... 31
10.	Chief Plant Protection Officer	... 31
<b>Specialists</b>		
<i>College of Agriculture, Poona-5</i>		
1.	Economic Botanist	... 32
2.	Agriculture Entomologist	... 32
3.	Plant Pathologist	... 32
4.	Agriculture Chemist	... 32
5.	Agricultural Bacteriologist	... 32
6.	Agricultural Economist	... 32
7.	Agronomist	... 32
8.	Horticulturist	... 32
9.	Agricultural Engineer	... 32
10.	Research Engineer	... 32
11.	Soil Chemist In-charge Soil Testing Laboratory	... 32
12.	Soil Chemist In-charge Soil Testing Laboratory, Nagpur-1.	21
13.	Vegetable Research Officer, Poona-5	... 32
14.	Research Officer, In-charge Grass Scheme, Poona-5.	... 32
15.	Bacteriologist, Poona-5	... 32
16.	Horticulturist, Citrus Dieback Scheme, Shrirampur	... 1
17.	Research Officer, American Cotton Breeding Scheme, Amraoti,	5
18.	Research Officer, American Cotton Breeding Scheme, Achalpur.	5

Sr. No.	Offices of the Department	Page
1	2	3
<b>Specialists—contd.</b>		
19.	Assistant Horticulturist, Aurangabad	7
20.	Assistant Wheat Specialist, Badnapur	7
21.	Oil-Seeds Research Officer, Badnapur	7
22.	Oil-Seeds Specialist, Jalgaon	16
23.	Rice Specialist, Karjat	18
24.	Horticulturist In-charge Citrus Development Scheme, Nagpur.	21
25.	Cotton Specialist, Nanded	23
26.	Cotton Breeder, Nanded	23
27.	Millets Specialist, Parbhani	29
28.	Cotton Research Officer, Parbhani	29
29.	Horticulture Development Officer, Kokan Region, Ratnagiri.	35
30.	Sugarcane Specialist, Padegaon	39
31.	Assistant Plant Pathologist, Wheat Rust Research Scheme, Mahabaleshwar.	39
32.	Soil Specialist, Sholapur	40
<b>Divisional</b>		
1.	Superintending Agricultural Officer, Aurangabad Division, Aurangabad.	7
2.	Deputy Director of Agriculture (Engineering), Aurangabad.	7
3.	Deputy Director of Agriculture (Research & Education), Aurangabad.	7
4.	Agricultural Engineer, Aurangabad	7
5.	Superintending Agricultural Officer, Nagpur Division, Nagpur.	21
6.	Deputy Director of Agriculture (Engineering), Nagpur Division, Nagpur.	21
7.	Deputy Director of Agriculture (Research and Education), Nagpur Division, Nagpur.	21
8.	Agricultural Engineer, Nagpur Division, Nagpur	21
9.	Tractor Engineer, M. T. Unit, Nagpur Division, Nagpur	21
10.	Tractor Engineer, M. T. Unit, Nagpur Division, Amravati.	6
11.	Superintending Agricultural Officer, Bombay Division, Nasik.	24
12.	Deputy Director of Agriculture (Engineering), Bombay Division, Nasik.	24
13.	Deputy Director of Agriculture (Research and Education), Bombay Division, Nasik.	24

Sr. No.	Offices of the Department	Page
1	2	3

**Divisional—contd.**

14.	Agricultural Engineer, Bombay Division, Nasik ...	24
15.	Superintending Agricultural Officer, Poona Division, Poona.	32
16.	Deputy Director of Agriculture (Engineering), Poona Division, Poona.	53
17.	Deputy Director of Agriculture (Research and Education), Poona Division, Poona.	33
18.	Agricultural Engineer, Poona Division, Poona. ...	33

**District Level**

*Parishad Agricultural Development Officers and District Agricultural Officers—*

Ahmednagar	...	1
Akola	...	3
Amraoti	...	5
Aurangabad	...	7
Bhandara	...	9
Bhir	...	11
Buldhana	...	12
Chanda	...	13
Dhulia	...	14
Jalgaon	...	16
Kolaba	...	18
Kolhapur	...	19
Nagpur	...	21
Nanded	...	23
Nasik	...	24
Osmanabad	...	27
Parbhani	...	29
Poona	...	33
Ratnagiri	...	35
Sangli	...	37
Satara	...	38
Sholapur	...	40
Thana	...	42
Wardha	...	43
Yeotmal	...	44

**Other Sections of the Agriculture Department**

*Divisional Soil Conservation Officers and Sub-Divisional Soil Conservation Officers—*

Ahmednagar	...	1
Akola	...	3

Sr. No.	Offices of the Department	Page
1	2	3

**Other Sections of the Agriculture Department—contd.**

Amraoti	...	5
Aurangabad	...	8
Bhandara	...	9
Bhir	...	11
Buldhana	...	12
Chanda	...	13
Dhulia	...	14
Jalgaon	...	16
Kolaba	...	18
Kolhapur	...	19
Nagpur	...	22
Nanded	...	23
Nasik	...	24
Osmanabad	...	27
Parbhani	...	29
Poona	...	33
Ratnagiri	...	35
Sangli	...	37
Satara	...	38
Sholapur	...	40
Thana	...	42
Wardha	...	43
Yeotmal	...	44

**Educational Institutions**

**(1) AGRICULTURAL COLLEGES**

*Principal, College of Agriculture—*

Akola	...	3
Amraoti	...	5
Dhulia	...	14
Kolhapur	...	19
Nagpur	...	22
Parbhani	...	29
Poona	...	33

**(2) GRAMSEVAK TRAINING CENTRES.**

*Principal, Gramsevak Training Centre—*

Amraoti	...	5
Jalna	...	8
Buldhana	...	12
Sindewahl	...	13

Sr. No.	Offices of the Department	Page
1	2	3
<b>Educational Institutions—contd.</b>		
Jalgaon	...	16
Kolhapur	...	19
Tharsa	...	22
Parbhani	...	29
Manjri	...	33
<b>(3) SOIL CONSERVATION TRAINING INSTITUTES</b>		
<i>Principal, Soil Conservation Training Institute—</i>		
Akola	...	3
Aurangabad	...	8
Chalisgaon	...	16
Nanded	...	23
Nasik	...	25
Satara	...	38
Sholapur	...	40
Kelapur	...	44
<b>(4) AGRICULTURAL SCHOOLS</b>		
<i>Superintendent, Agricultural School—</i>		
Puntamba	...	1
Akola	...	3
Amraoti	...	5
Gangazari	...	9
Mominabad	...	11
Chanda	...	13
Dhulia	...	14
Roha	...	18
Kolhapur	...	19
Nanded	...	23
Malegaon	...	25
Latur	...	27
Parbhani	...	29
Manjri	...	33
Mirjola	...	35
Digraj	..	37
Borgaon	...	38
Sholapur	...	40
Kosbad	...	42
Seisura	...	43
Yeotmal	...	44

Sr. No.	Offices of the Department	Page
1	2	3

### EDUCATIONAL INSTITUTIONS —contd.

#### (5) HOME SCIENCE AND WORKSHOP WINGS

Amraoti	...	5
Sindewahi	...	13
Manjri	...	33

#### Development Scheme

(1) Sugarcane Development Officer, Ahmednagar	...	2
(1) Sugarcane Development Officer, Kolhapur	...	20
(2) Cotton Development Officer, Ahmednagar	...	2
(2) Cotton Development Officer, Malegaon	...	26
(3) Cotton Extension Officer, Amraoti	...	6
(4) Cotton Research Officer, Jalgaon	...	17
(5) Asstt. Oilseed Extension Officer, Akola	...	3
(5) Asstt. Oilseed Extension Officer, Dhulia	...	15
(5) Asstt. Oilseed Extension Officer, Latur	...	27
(5) Asstt. Oilseed Extension Officer, Karad	...	38
(6) Asstt. Oilseed Extension Officer, I/c Package Programme, Murtizapur.	...	3
(6) Asstt. Oilseed Extension Officer, I/c Package Programme, Pachora.	...	3
(6) Asstt. Oilseed Extension Officer, I/c Package Programme, Ahmedpur.	...	27
(6) Asstt. Oilseed Extension Officer, I/c Package Programme, Karad.	...	38
(7) Oilseed Extension Officer, Jalgaon	...	17
(8) Cashewnut Development Officer, Dapoli	...	35
(9) Cocoa Development Officer, Sawantwadi	...	35

#### Agricultural Research Stations in—

Ahmednagar district	...	1
Akola district	...	3
Amraoti district	...	6
Aurangabad district	...	8
Bhir district	...	11
Buldhana district	...	12
Chanda district	...	13
Dhulia district	...	14
Jalgaon district	...	16
Kolaba district	...	18
Kolhapur district	...	19

Sl. No.	Offices of the Department	Page
1	2	3

**Development Scheme—contd.**

Nagpur district	...	22
Nasik district	...	25
Osmanabad district	...	27
Parbhani district	...	29
Poona district	...	34
Ratnagiri district	...	35
Sangli district	...	37
Satara district	...	39
Sholapur district	...	41
Thana district	...	42
Yeotmal district	...	44

**Taluka Seed Multiplication Farms in—**

Ahmednagar district	...	2
Akola district	...	4
Amraoti district	...	6
Aurangabad district	...	8
Bhandara district	...	10
Bhir district	...	11
Buldhana district	...	12
Chanda district	...	13
Dhulia district	...	14
Jalgaon district	...	17
Kolhapur district	...	20
Nagpur district	...	22
Nanded district	...	23
Nasik district	...	25
Osmanabad district	...	28

**Taluka Seed Multiplication Farms in—**

Parbhani district	...	30
Poona district	...	34
Ratnagiri district	...	36
Sangli district	...	37
Satara district	...	39
Sholapur district	...	41
Thana district	...	42
Wardha district	...	43
Yeotmal district	...	44

**PRINTED AT THE YERAVADA PRISON PRESS, POONA.**