

**A GEOGRAPHICAL ANALYSIS**  
**(INCLUDING PHYSIOGRAPHY)**  
**OF**  
**THE KHAIRPUR STATE**  
**—A Post-Barrage Investigation**

**BY**

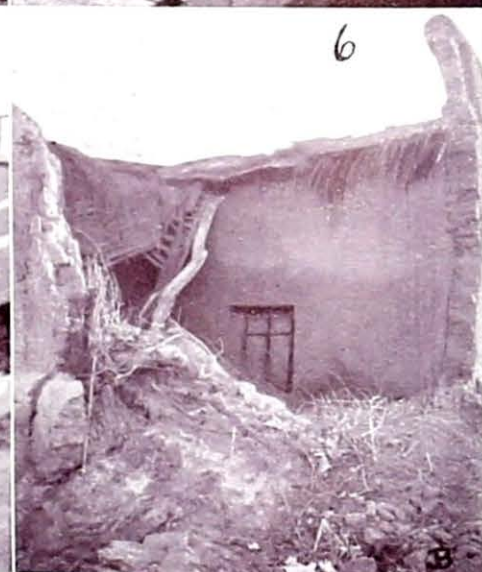
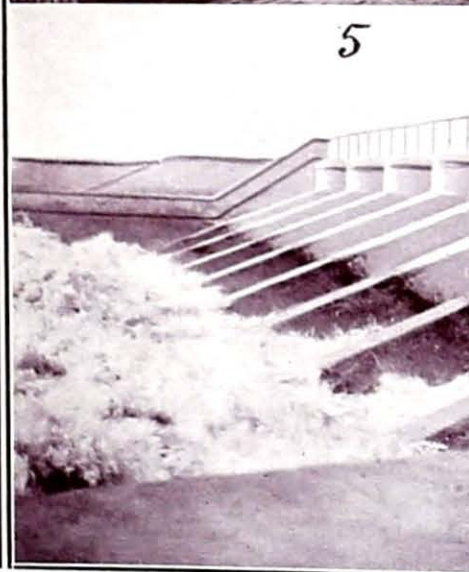
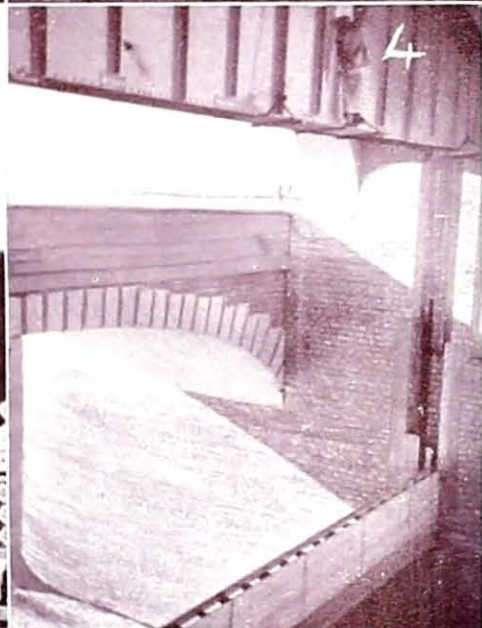
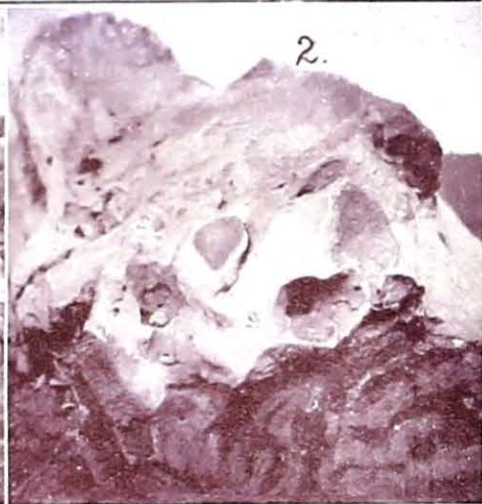
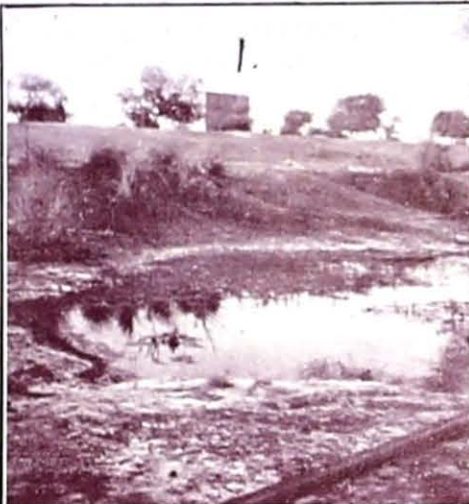
**M. B. PITHAWALLA.**

**B.A., B.SC., L.C.P. (Lond.), F.G.S.**

**Research Certificate, University of London.**

**KARACHI**

**1935.**



1. SEEPAGE (Khairpur Mirs) Surface pools.
2. FLINTS IN LIMESTONE (Ghar Hills.)
3. PIR-JO-GOTH (Khairpur.)
4. SUKKUR BARRAGE (10 ft. diff. in Level in Winter.)
5. TANDO MUSTIKHAN (8 feet Fall.)

6. SEEPAGE (Lukman) House collapse.

HARROON PRESS, KARACHI.

BLOCK BY JESHTANAND BROS

**A GEOGRAPHICAL ANALYSIS**  
(INCLUDING PHYSIOGRAPHY)  
OF  
**THE KHAIRPUR STATE**  
—A POST BARRAGE INVESTIGATION

*BY*

**M. B. PITHAWALLA,**  
B.A., B.Sc., L.C.P. (Lond.) F.C.S.

Research Certificate, University of London.

## FOREWORD.

---

This is the first of a Series of Geographical ((Regional) Studies of the important Native States of India, under contemplation, and is reprinted from the Journal of the Sind Historical Society (Vol. I Part IV). It forms part of my forthcoming publication on the LOWER INDUS BASIN of SIND, which was commenced by me at the University of London under the able guidance of Professor E. G. R. Taylor, D.Sc., F.R.G.S., in 1932-33.

My thanks are also due to the State officials especially Khan Bahadur J. R. Colabawala, the State Engineer, and other public bodies for helping me in the collection of the data, to the Council of the Society for permission to reprint this Paper and to Rev. R. W. Matheson, M. A., Kerr Trav. Scholar (Edin.), I. E. E. for going through the press proofs.

I hereby cordially invite collaboration of students of geographical research for the publication of the whole Series, which will be a useful and instructive one. It will, no doubt, be an aid to the acquisition of comprehensive knowledge of the physical and economic conditions of vast areas of land, covering the Native States, and will prove to be a groundwork for their historical studies.

M. B. P.

KARACHI,  
7-9-1935.

## CONTENTS.

	PAGES.
Foreword	
I. Introduction .. .. .	1
II. Situation and Extent of Territory .. .. .	1
III. A Historical Setting... .. .	2
IV. Physiography. , .. .. .	7
V. Climate. . . . .	15
VI. Natural Regions and Vegetation. .. .. .	19
VII. Water Supply and Irrigation . . . . .	20
VIII. Agriculture .. .. .	23
IX. Communications .. .. .	29
X. Population .. .. .	30
XI. Trade and Manufacture. .. .. .	35
XII. Animal Life. .. .. .	37
XIII. Life of People. .. .. .	38
XIV. The Barrage and After. .. .. .	39
XV. Conclusion. .. .. .	43
Bibliography.. .. .	45

**BIBLIOGRAPHY.**

1. Imperial Gazetteer of India, Volume VIII—W. W. Hunter, 1886.
2. Gazetteer of the Province of Sind—A. W. Hughes, 1876.
3. Gazetteer of the Province of Sind Vol. A—Aitkin, 1907.  
& Vol. B. 7 Parts—J.W. Smyth, 1919.
4. Selections from the Records of the Bombay Government No. XVII  
New Series 1855.
5. Treaties, Engagements and Sanads (India) Vol. VII, Bombay Presidency  
4th Edition—Aitchison, 1909.
6. Geology of India (2nd Edition) (Geological Survey of India)  
—R. D. Oldham, 1893.
7. Geology of Western Sind. (Memoirs of the Geological Survey of India  
Vol. XVII, Part I)—W.T. Blanford, 1879.
8. Alkanline Lakes and Soda Industries of Sind (Memoirs of the Geological  
Survey of India, Vol. XLVII, Part 2)  
—G. Cotter, 1923.
9. On the Physical Geography of the Great Indian Desert.  
(Journal of the Asiatic Society of Bengal, XIV, Part 2.  
W. T. Blanford, 1876.
10. A Note on the Sub-soil Investigations made in the area commanded by  
the Lloyd Barrage Canals. (Bombay Engineering Congress Paper 136)  
—C. G. Hawes (Development and Research Department) 1932.
11. Tando Musti Khan Fall. (Bombay Engineering Congress-Paper, 123)  
—J.R. Colabawala, 1927.
12. Annual Reports of the Departments of Agriculture in Sind, 1932, 1933.
13. Reyasat-e-Khairpur (In Sindhi) by Mirza Kalichbeg (Faiz Press, Khair-  
pur) 1924.
14. Administration Reports of the Khairpur State 1904-1934.