

A POPULAR ACCOUNT
OF THE
PROGRESS OF THE WORK
OF THE
MADRAS AGRICULTURAL
DEPARTMENT
1922-35

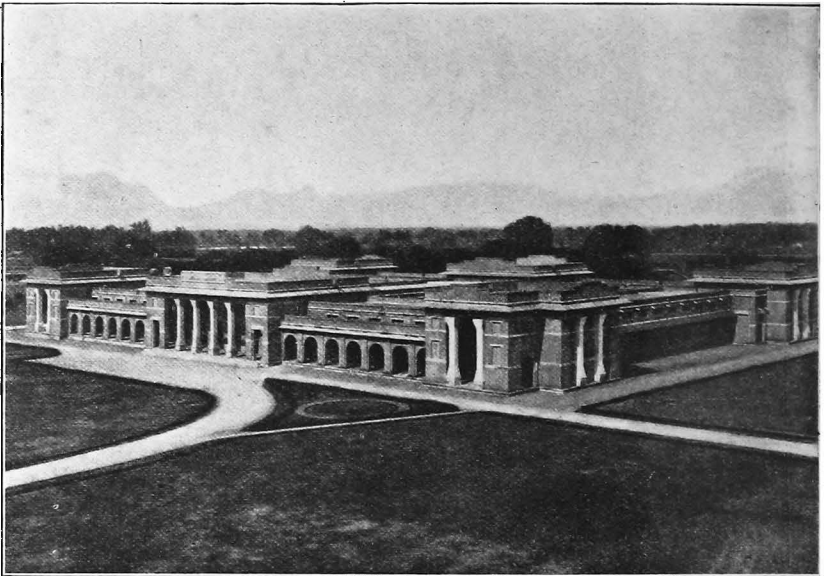
AGENTS FOR THE SALE OF MADRAS GOVERNMENT PUBLICATIONS

IN INDIA

- NEW BOOK CO., Booksellers, 'Kitab Mahal,' 188-90, Hornby Road, Bombay.
- D. B. TARAPOREVALA SONS & CO., Bombay.
- THACKER & CO. (LTD.), Bombay.
- N. S. WAGLE, Circulating Agent and Bookseller, No. 6, Tribhuvan Road, Girgaon, Bombay.
- THE BOOK COMPANY, Calcutta.
- BUTTERWORTH & CO. (LTD.), 6, Hastings Street, Calcutta.
- R. CAMBRAY & CO., Calcutta.
- THACKER, SPINK & CO., 3, Esplanade East, Calcutta.
- The Proprietor, THE PUNJAB SANSKRIT BOOK DEPOT, Saidmitha Street, Lahore (Punjab).
- THE CHRISTIAN LITERATURE SOCIETY FOR INDIA, Post Box No. 501, Park Town, Madras.
- CITY BOOK COMPANY, Post Box No. 283, Madras.
- C. COOMARASAWMY NAIDU & SONS, 27 and 35, Chinnathambi Street, Madras.
- HIGGINBOTHAMS (LTD.), Mount Road, Madras.
- THE LAW PRINTING HOUSE, 11, Mount Road, Madras.
- G. A. NATESAN & CO., Madras.
- P. R. RAMA IYER & CO., 368, Esplanade Row, Madras.
- P. VARADACHARI & CO., Booksellers, 8, Linga Chetti Street, Madras.
- Agent, THE SOUTH INDIA SAIVA SIDDHANTHA WORKS PUBLISHING SOCIETY, LTD., 6, Cora
Merchant Street, Madras.
- D. SREE KRISHNAMURTHI, Editor of "Grama Paripalana," Ongole (Madras)
- E. M. GOPALAKRISHNA KONE, Pudumantapam, Madura (Madras).
- M. SESHACHALAM & CO., Proprietors, The Hindu Press, Masulipatam (Madras).
- THE HINDUSTAN PUBLISHING CO. (LTD.), Rajahmundry (Madras).
- THE MODERN STORES, Salem (Madras).
- S. KRISHNASWAMI & CO., Teppakulam Post, Trichinopoly Fort (Madras).
- L. VAIDYANATHA AYYAR, Law Bookseller, Teppakulam P.O., Trichinopoly (Madras).
- A. VENKATASUBBAN, Law Bookseller, Vellore (Madras).
- P. N. SWAMINATHASIVAN & CO., Commission Agents, Booksellers, etc., Pudukkottal State.
- MOHANLAL DOSSABHAI SHAH, Books Agent, etc., Rajkot.
- THE BOOKLOVERS' RESORT, Booksellers and News Agents, Talkad, Trivandrum.

NOTICE

Official publications may be obtained in the United Kingdom either direct from the office of the High Commissioner for India, India House, Aldwych, London, W.C. 2, or through any bookseller.



THE AGRICULTURAL COLLEGE—FREEMAN BUILDING.



DEPARTMENT OF AGRICULTURE, MADRAS

A POPULAR ACCOUNT

OF THE

PROGRESS OF THE WORK

OF THE

MADRAS AGRICULTURAL
DEPARTMENT

(1922-35)

• MADRAS

PRINTED BY THE SUPERINTENDENT, GOVERNMENT PRESS

PRICE, Rs. 1-4-0]

1937

TABLE OF CONTENTS.

CHAPTER		PARAGRAPHS
I	INTRODUCTION	1-32
II	AGRICULTURAL EDUCATION—	
	(a) Agricultural College	33-35
	(b) Central Farm	36-45
III	AGRICULTURAL RESEARCH—	
	(a) Agricultural Chemistry	46-55
	(b) Systematic and Economic Botany.	56-61
	(c) Paddy	62-72
	(d) Cotton	73-83
	(e) Millets	84-93
	(f) Oil-seeds	94-99
	(g) Sugarcane	100-106
	(h) Horticulture and Pomology	107-113
	(i) Mycology	114-127
	(j) Entomology	128-145
	(k) Agricultural Engineering	146-154
	(l) Livestock	155-169
IV	RESEARCH AND DEMONSTRATION IN THE DISTRICTS—	
	(a) The Vizagapatam Circle	170-184
	(b) The Guntur Circle	185-201
	(c) The Bellary Circle	202-215
	(d) The Chingleput Circle	216-225
	(e) The Trichinopoly Circle	226-249
	(f) The Madura Circle	250-270
	(g) The West Coast Circle	271-294
	(h) The Coimbatore Circle	295-315
V	AGRICULTURAL MARKETING	316-320
VI	LEGISLATION	321-330
VII	PUBLICATIONS	331-336
VIII	COLLABORATIVE ACTIVITIES	337-343
IX	CONCLUSION	344
		PAGES
	Glossary of Botanical names	142
	Glossary of Vernacular and other expressions	146
	Index	147

PREFACE

IN JULY 1935, Government desired that the public mind should be educated in the various activities of Government since the introduction of the present constitution and suggested that Heads of Departments under the Development Department should prepare an account of the progress achieved in each Department. The Agricultural Department was fortunate in having a "Popular Account" of its work published in 1922. The present publication aims at bringing the book uptodate both in matter and presentation and includes information relating to a period of 13 years from 1922 to 1935.

As I write, I am conscious of two facts: that the old order is fast changing and will quickly give place to the new. The new constitution is soon to dawn. Secondly, in the activities of the Department things have moved so quickly during the last year or two that by the time the Account reaches the hands of the public it would almost cease to be uptodate in at least two sections, namely, live-stock improvement and demonstration.

The preparation of an Account of this kind, comprehensive and popular, depicting the various activities of the Department must have meant a good deal of work to every member of my staff. I avail myself of this opportunity to acknowledge the help so readily given. Equally difficult is the editing of such a publication but I was fortunate in having the whole-hearted assistance of M.R.Ry. Rao Bahadur G. N. Rangaswami Ayyangar Avargal, but for whose ready help it would not have been possible to bring it out in so short a time. The hard and persistent effort needed to collate the information in such a manner as to make it readable and interesting was at the sacrifice of the leisure of both Mr. Rangaswami Ayyangar and his staff to whom I owe my sincere thanks.

MADRAS,
18th February 1937.

D. ANANDA RAO,
Director of Agriculture.

GLOSSARY OF BOTANICAL NAMES.

<i>Common name.</i>	<i>Botanical name.</i>
A	
Allspice	<i>Pimenta officinalis</i> , Lindl.
Apple	<i>Pyrus malus</i> , L.
Arecanut	<i>Areca catechu</i> , L.
<i>Arika</i> (Tel.)	<i>Paspalum scrobiculatum</i> , L.
Avocado	<i>Persea americana</i> , Mill.
B	
Banana	<i>Musa sapientum</i> , L.
Barley	<i>Hordeum vulgare</i> , L.
Beet root	<i>Beta vulgaris</i> , L.
<i>Bendekai</i> (Tel.)	<i>Hibiscus esculentus</i> , L.
Bengal gram	<i>Cicer arietinum</i> , L.
Betel vine	<i>Piper betle</i> , L.
Brinjal	<i>Solanum melongena</i> , L.
C	
Cabbage	<i>Brassica oleracea</i> , L. var. <i>bullata</i> , DC.
Cambodia cotton	<i>Gossypium hirsutum</i> , L.
Carrot	<i>Daucus carota</i> , L.
Cashewnut	<i>Anacardium occidentale</i> , L.
Castor	<i>Ricinus communis</i> , L.
Cauliflower	<i>Brassica oleracea</i> , L. var. <i>botritis</i> , L.
Cherimoyer	<i>Annona cherimolia</i> , Mill.
Chillies	<i>Capsicum</i> spp.
<i>Cholam</i> (Tam.)	<i>Sorghum vulgare</i> , Pers.
Cinnamon	<i>Cinnamomum zeylanicum</i> , Breyn.
Clove	<i>Eugenia aromatica</i> , Baill.
Cocoa	<i>Theobroma cacao</i> , L.
Coconut	<i>Cocos nucifera</i> , L.
Coriander	<i>Coriandrum sativum</i> , L.
Cotton	<i>Gossypium</i> spp. see Cambodia, <i>Karunganni Nadam, Pulichai, and Uppam.</i>
Crab apple	<i>Pyrus baccata</i> , L.
<i>Cumbu</i> (Tam.)	<i>Pennisetum typhoides</i> , Stapf and Hubbard.
Cumin	<i>Cuminum cyminum</i> , L.
Custard apple	<i>Annona reticulata</i> , L.
D	
<i>Dhaincha</i>	<i>Sesbania aculeata</i> , Pers.
Durian	<i>Durio zibethinus</i> , L.

Common name.	Botanical name.
E	
Elephant grass	<i>Pennisetum purpureum</i> , Schum.
F	
Fig	<i>Ficus carica</i> , L.
Fox glove	<i>Digitalis purpurea</i> , L.
G	
<i>Ganja</i> (Tam.)	<i>Cannabis sativa</i> , L.
Garlic	<i>Allium sativum</i> , L.
Gingelly	<i>Sesamum orientale</i> , L. †
Ginger	<i>Zingiber officinalis</i> , Rosc.
Grape fruit	<i>Citrus paradisi</i> , Macf.
Grape vine	<i>Vitis vinifera</i> , L.
Groundnut	<i>Arachis hypogaea</i> , L.
Guava	<i>Psidium guajava</i> , L.
Guinea grass	<i>Panicum maximum</i> , Jacq.
I	
Ipecacuanha	<i>Psychotria ipecacuanha</i> , Stokes.
Indigo	<i>Indigofera anil</i> , L.
J	
Jack	<i>Artocarpus integer</i> , Merr.
Jalap	<i>Ipomoea purga</i> , Hayne.
Jasmine	<i>Jasminum</i> spp.
<i>Jonna</i> (Tel.)	Same as <i>cholam</i> .
K	
<i>Karunganni</i> cotton (Tam.)	<i>Gossypium indicum</i> , Lam.
<i>Knol khol</i> (Hindi)	<i>Brassica oleracea</i> , L. var. <i>gongyloides</i> , L.
<i>Kolakkattai</i> grass (Tam.)	<i>Cenchrus ciliaris</i> , L.
Kola nut	<i>Cola acuminata</i> , Schot.
<i>Kolinji</i> (Tam.)	<i>Tephrosia purpurea</i> , Pers.
<i>Korai</i> (Tam.) (cultivated)	<i>Cyperus corymbosus</i> , Rottb. and C. <i>Pangorei</i> , Rottb.
<i>Korai</i> (Tam.) (weed)	<i>Cyperus bulbosus</i> , Vahl. & C. <i>rotundus</i> , L.
<i>Korali</i>	<i>Setaria pallidifusea</i> , Stapf & Hubbard.
<i>Korra</i> (Tel.)	<i>Setaria italica</i> , Beauv.
<i>Kudiraivali</i> (Tam.)	<i>Echinochloa frumentaceae</i> , Link.
L	
Ladies' fingers	<i>Hibiscus esculantus</i> , L.
Langsat	<i>Lansium domesticum</i> , Jack.
Lemon	<i>Citrus limonia</i> , Osbeck.
Litchi	<i>Litchi chinensis</i> , Sonn.
Loquat	<i>Eriobotrya japonica</i> , Lindl.
Luerne	<i>Medicago sativa</i> , L.
Lupin	<i>Lupinus</i> spp.

<i>Common name.</i>	<i>Botanical name.</i>
M	
Maize <i>Zea mays</i> , L.
Mango <i>Mangifera indica</i> , L.
Mangosteen <i>Garcinia mangostana</i> , L.
N	
<i>Nadam</i> cotton (Tam.)	.. <i>Gossypium obtusifolium</i> , Roxb.
<i>Nanal</i> (Tam.) (wild cane)	.. <i>Saccharum spontaneum</i> , L.
Neem <i>Azadirachta indica</i> , Juss.
Nutmeg <i>Myristica fragrans</i> , Hott.
O	
Oats <i>Avena sativa</i> , L.
<i>Omum</i> (Tam.) <i>Carum copticum</i> , C.B. Clarke.
Onion <i>Allium cepa</i> , L.
Orange <i>Citrus sinensis</i> , Osbeck.
P	
Paddy <i>Oryza sativa</i> , L.
Palmyra <i>Borassus flabellifer</i> , L.
<i>Panivaragu</i> (Tam.) <i>Panicum miliaceum</i> , L.
Papaya <i>Carica papaya</i> , L.
Peach <i>Prunus persica</i> , Stokes.
Pear <i>Pyrus communis</i> , L.
Pepper <i>Piper nigrum</i> , L.
Persimmon <i>Diospyros kaki</i> , L.
<i>Pillipesara</i> (Tel.) <i>Phaseolus trilobus</i> , Ait.
Pineapple <i>Ananas comosus</i> , Merr.
Plantain <i>Musa paradisiaca</i> , L.
Plum <i>Prunus domestica</i> , L.
Pomegranate <i>Punica granatum</i> , L.
Pomelo <i>Citrus maxima</i> , Merr.
Potato <i>Solanum tuberosum</i> , L.
Prickly pear <i>Opuntia dilleni</i> , Haw.
<i>Pulichai</i> cotton (Tam.)	.. <i>Gossypium neglectum</i> , Tod.
<i>Pungam</i> (Tam.) <i>Pongamia glabra</i> , Vent.
Q	
Quince <i>Cydonia oblonga</i> , Mill.
Queensland nut <i>Macadamia ternifolia</i> , F. Muell.
R	
<i>Ragi</i> (Tam.) <i>Eleusine coracana</i> , Gaertn.
<i>Rambutan</i> (Burm.) <i>Nephelium lappaceum</i> , L.
Redgram <i>Cajanus cajan</i> , L.
Rice <i>Oryza sativa</i> , L.
Rose <i>Rosa</i> spp.

<i>Common name.</i>	<i>Botanical name.</i>
S	
<i>Sajja</i> (Tel.) Same as <i>cumbu</i> .
<i>Samai</i> (Tam.) Panicum miliare, Lam.
<i>Sapota</i> Achras zapota, L.
<i>Senna</i> Cassia angustifolia, Vahl.
<i>Soya bean</i> (Soy bean)	.. Glycine max, Merr.
<i>Sorghum</i> Sorghum vulgare, Pers.
<i>Sugarcane</i> Saccharum officinarum, L.
<i>Sunnhemp</i> Croton tiglium, L.
<i>Surinam cherry</i> Eugenia michelli, L.
T	
<i>Tapioca</i> Manihot utilisima, Pohl.
<i>Tenai</i> (Tam.) Same as <i>korra</i> .
<i>Teosinte</i> Euchlaena mexicana, Schrad.
<i>Tobacco</i> Nicotiana tabacum, L.
<i>Tomato</i> Lycopersicum esculentum, Mill.
<i>Turmeric</i> Curcuma longa, L.
U	
<i>Uppam cotton</i> (Tam.),	.. Gossypium herbaceum, L.
V	
<i>Varagu</i> (Tam.) Same as <i>Arika</i> .
<i>Variga</i> (Tel.) Same as <i>Panivaragu</i> .
<i>Vasambu</i> (Tam.) Acorus calamus, L.
<i>Vempali</i> (Tel.) Tephrosia purpurea, Pers.
W	
<i>Wattle</i> Acacia spp.
<i>Wheat</i> Triticum spp.

GLOSSARY OF VERNACULAR AND OTHER EXPRESSIONS.

Brahmini bulls (Sans.)	..	Un-tethered breeding bulls dedicated to temples.
Ceded Districts	The districts of Cuddapah, Kurnool, Bellary and Anantapur.
Chitrai (Tam.)-	A Tamil month from mid-April to mid-May.
Circars	The districts of Ganjam, Vizagapatam, Godavari and Kistna.
Copra (Mal.)	The dried kernel of the coconut.
Firka	A group of villages under the jurisdiction of a Revenue Inspector.
Gorru (Tel.)	A seed drill common in the Ceded districts.
Guntaka (Tel.)	A blade harrow of the Ceded districts.
Jamabandi	An annual gathering in the camp of an important Revenue Officer at which village accounts are checked and the grievances of villagers are heard and redressed.
Kallar (Tam.)	A Tamil backward community of the Southern districts of the Madras Presidency.
Kapas	Picked cotton with seed.
Kar (Tam.)	An early agricultural season of the Tanjore delta (June to September).
Koleroga (Can.)	See 'Mahali.'
Kuruvai (Tam.)	The early season paddy crop of Tanjore (June to September).
Mahali (Mal.)	A fungus disease (<i>Phytophthora omnivora</i>) var. <i>arecae</i> (Coleman) affecting arecanut.
Majstry (Hindi)	An agricultural master-workman assisting the demonstrator in the demonstration of agricultural improvements.
Mammooty (Tam.)	The common iron spade with a wooden handle used for digging soil.
Manjal (Tam.)	Yellow.
Mhote	An indigenous water lift worked by a pair of bullocks moving on an inclined plane.
M.M.	Abbreviation for 'Madras Measure'—the standard measure of the bazaars—capacity 108 cubic inches.
Modan (Mal.)	The uplands of Malabar unsuited for wet cultivation.
Pacha (Tel.)	Yellow.
Pairu (Tel.)	The agricultural season (October to December).
Poramboke (Tam.)	Waste lands adjoining villages or cultivated lands.
Pothy (Tam.)	A unit of weight for weighing cotton = 250 lb.
Punasa (Tel.)	The agricultural season (June to September).
Putti (Tel.)	A unit of measure—a 'putti' of paddy weighs 2,210 lb.
Samba (Tam.)	The agricultural season August to January.
Takkavi Loans	Loans given by Government to <i>bona fide</i> cultivators for agricultural purposes.
Tella (Tel.)	White.
Udu (Tam.)	Refers to a system of paddy cultivation in the Tanjore delta in which a long (seven months) duration and a short (three months) duration variety are grown mixed.
Vellai (Tam.)	White.

INDEX

	A	PARAGRAPH NUMBER
Act, Commercial Crops Markets		330
„ Cotton Control		329
„ Cotton Ginning and Pressing Factories		328
„ Cotton Transport		327
Activated sludge		44
Active carbon		52
Agriculture, Royal Commission on		2
„ Short Course in		9, 34
„ Under the Reforms		1
„ University Course in		8
Agricultural Association		198
„ Bacteriology		13
„ Chemistry		46-55
„ College		33-35
„ College Estate		36
„ Department, the sections of		32
„ Digest		334
„ Education		33-35
„ implements, census of		21
„ Statistics Committee		317
Animal Nutrition		4, 13, 54
Apiculture		142
Arecanut		275
Artificial manures		13, 343
	B	
Bamboo		197
Bananas (<i>see also</i> plantains)		57
Bee-keeping		144, 179, 287 311
Bengal gram		83
Betel-vine disease, collaborative research on		24
„ <i>Phytophthora</i> on		123
Blast on paddy		65, 117
Boll-worm, Pink		137
Bordeaux mixture		127
Botanical Gardens, Coimbatore		37
„ Ootacamund		107
Botany, Economic and Systematic		56-61
Breeding bulls, premium scheme		167
B. Sc. Ag. Degree		33
Bud-rot, Palmyra		115
Buffalo Breeding Station, Guntur		163
Bulletins		333
Bund former		21, 153

	C	PARAGRAPH NUMBER
Calves, weaning of		33
Cambodia seed multiplication scheme		295, 300
Cashewnuts		282
Castor		98
Caterpillar, Coconut		134
,, Groundnut hairy		133, 223
,, Paddy swarming		130
Cattle breeding, a slow process		23
Cattle, cross-bred		159
,, Farm, Chintaladevi, for Ongoles		161
,, " Hosur		23, 156
,, <i>Halikar</i>		160
,, <i>Kangayam</i>		158
,, <i>Ongole</i> , survey of		162
,, <i>Scindhe</i>		157
Central Farm		37-45
Chemistry. Agricultural		13, 46-55
Chillies		189
,, thrips, tobacco treatment of		201
<i>Cholam</i> (see <i>Jonna</i>)		88
,, <i>Irungu</i>		269
,, malting of		55, 89
Circles, First		170
,, Second		185
,, Third		202
,, Fourth		216
,, Fifth		226
,, Sixth		250
,, Seventh		271
,, Eighth		295
Cochineal, on pricklypear		141
Coconut		96, 241
,, production and trade, enquiry		320
Collaboration with, Co-operative Department		8, 338
,, Co-operative Organizations		177, 230, 247 291, 312
,, Court of Wards		291
,, District Boards		291, 309
,, Excise Department		341
,, Fisheries Department		341
,, Industries Department		339
,, Irrigation Department		339
,, Jail Department		341
,, Labour Department		342
,, Public Health Department		340
,, Public Works Department		314
,, Revenue Department		322, 324
,, Veterinary Department		341
,, Manure firms		343

		PARAGRAPH NUMBER
C—cont.		
Co-operative Society, the Lalgudi Sivagnanam		231, 338
„ Trading Society, Tiruppur		338
<i>Copra</i>		97
<i>Coriander</i>		317
Cost of Production of Corps, Enquiry		319
Cotton		17, 204, 239 300
„ Breeding Station		73
„ Cambodia		17, 74, 76, 187 252
„ „ Co. 2		75, 239, 252
„ Coconadas		187
„ Company		262
„ Crop rotation for		269
„ Fodder Cholam Scheme		81, 269
„ H-1		17, 204
„ Herbaceum Scheme		82
„ improvements through agronomy		77
„ <i>Karunganni</i>		17, 221, 251
„ Kovilpatti strains		263, 264, 265
„ N-14		215
„ <i>Nadam</i> Scheme		80
„ Northerns		73
„ Pempheres and Physiological Scheme		79
„ <i>Pulichai</i>		259, 329
„ Schemes of the Indian Central Cotton Committee		78
„ Section		73-83
„ westerns		73
Cream jaggery		52, 172
Criminal Settlement		342
Crop atlas		317
Crops, Specialization in		15
<i>Cumbu</i> (see <i>Sajja</i>)		90
<i>Cumbu</i> , drill sowing of		256
D		
Dairy		43
Deficiency diseases, Investigation of		340
Demonstration		25
„ Intensive		31
Demonstrator, Agricultural		30
Depression		3
Dry Farming		87, 214
E		
Electricity and agriculture		22
Engineering, agricultural		21, 146-154
Entomology		14, 128-145
Ericulture		143
Exhibition Van, Motor		26

F		PARAGRAPH NUMBER
Fal-Kamesam Process, wood preservation by		45
Famine area		203
Farm Yard Manure		209, 305
" artificial		219
Fodder Cholam Scheme		81, 269
Fodder Crops, no water rates for		19
Fodders		19, 41, 195 243, 301
Foot-rot on Paddy, cerasan treatment		117
Fruit gardens		174, 195, 208 281, 302
Fruit industry		113
" of the plains		111
" Station, Anantarakupet		112
" " Burliar		109
" " Kallar		110
Fruits		42, 53, 174 182
Fungus diseases		114
" general remedial measures		126
G		
<i>Ganja</i>		341
Garlic		317
Gingelly		98
Ginger		277
Grape-vine		270
Grass, elephant		41
" guinea		41
Grasses		58
Grasshopper, paddy		132
Green manures		16, 69, 175 254, 306
Groundnut		95, 219
" Gudiyattam bunch		219
" marketing warehouses		219
" A.H. 25 and other strains		193, 219, 240 299
H		
Herbaceum scheme		82
Herbarium, the Madras		56
H.M. <i>Guntaka</i>		21
Hopper, Mango		135
Horticulture		107
I		
Imperial Council of Agricultural Research (I.C.A.R.)		4
I.C.A.R. Analysis of manurial experiments		13
" Animal Nutrition		4, 13, 54
" Cost of Production of crops, enquiry		319
" Dry Farming		87

	PARAGRAPH NUMBER
I—cont.	
I.C.A.R. Fruit Research	112
" Malt Making	4, 55, 89
" Marketing	317
" Potato scheme	315
" Rice Station at Berhampur	64
" Sugarcane Research	4, 18, 100
Implements, improved	176, 200, 212, 245, 284, 304
Improvement in the quality of rice	66
Improvements, Permeation of	29
Indian Central Cotton Committee (I.C.C.C.)	5, 78, 82, 269, 300
I.C.C.C. Co. 2. Seed Multiplication Scheme	295, 300
" Fodder Cholam Scheme	81
" Herbaceum Scheme	82
" <i>Nadam</i> Scheme	80
" Pempheres and Physiological Scheme	79
Indianization	7
Indian Sugar Committee	99
Insecticides, study of	141
Insect pests, Biological method of control	14
Iron ploughs	148
Irrigation experiments	314
J	
Jaggery making, improved furnace	172
" improvements in	52
<i>Jonns</i> (see <i>Cholam</i>)	88
" strains, N 28-3	205, 215
" " N 29-68	205
" " T-1	205
" " T-6	205
K	
Kalahasti School Farm	225
<i>Kallare</i> , Agricultural Middle School for	10
<i>Korai</i>	197
<i>Korai</i> , weed, control	224
<i>Korra</i> (see <i>Tenai</i>)	92
L	
Labourers' School, juveniles	183
Laccadives, Coconut improvement in	273
Lady-bird beetles	138
Leaflets	332
Legislative measures	321
Library, Agricultural College	35
Light trap	131
Literate labour	184

	L—cont.	PARAGRAPH NUMBER
Livestock	43, 178, 197, 222, 247, 258, 285, 309
,, census of	23
,, Research Station, Hosur	156
Livestock, sale of	169
,, Section	155-169
Lucerne	41

M

Madras Agricultural Journal	336
Madras Flora by Mr. Gamble	61
Mahali disease of arecanut	116, 289
Maize for fodder	41
Malt from cholam	55, 89
Mango, vitamin content in	53
Mangosteen	109-110
Manurial Experiments, Kovilpatti	268
Manuring and crop quality	51
Marketing, Agricultural	315, 320
,, Officers	317
,, warehouses	219
Medicinal plants	20, 60, 181
Middle schools, Agricultural	10
,, Anakapalle	10
,, Taliparamba	294
,, Usilampatti	260
Mildew, grape-vine	122
Millets	15, 84, 93, 238, 297
Millets Breeding Station	84
Millets, irrigated	267
,, knowledge on	85
,, minor	93
,, organization of work	86
,, rainfed	266
Mopla rebellion, help after the	291
Mosaic, sugarcane	119
Motor Exhibition Vans	25
Mycology	14, 114-127

N

Nadam Scheme	80
----------------------	---------	----

O

Oil-seeds Section	94-99
---------------------------	---------	-------

P

Paddy 16, 171, 190, 206, 217, 232, 253, 255, 272, 227
---------------	---------	----------------------------------------------------------

	P—cont.	PARAGRAPH NUMBER
Paddy artificial manures for		16
" breeding		63
" breeding station		62
" cultural and manurial experiments		69
" economic planting		16, 231
" G.E.B. 24		16, 190, 206, 272
" hybridisation		66
" improved strains		65, 181, 217, 255
" nutritious types		70
" seed supply		67
" stiff straw		66
" strains, spread of		68
" sub-stations		64
" trade, enquiry		71, 320
Pathology, plant		14
Pempheres and Physiological Scheme		79
Pepper		274
Personnel, increase in		6
Pest Act against boll worm and stem weevil of Cambodia cotton		322
" bud-rot of palmyra		325
" coconut caterpillar		136, 134, 324
" hairy caterpillar		133, 323
" water hyacinth		326
Pests and Diseases		180, 201, 213, 244, 288, 289, 308
" relief measures, decentralization of		14, 145
Pigs		43, 166, 311
<i>Phillipesara</i>		174
Pine-apple		72, 279
<i>Piricularia oryzae</i>		66
Plantains		53, 57, 173- 237, 278
" <i>Nendrum</i>		278
Plantation crops		303
Pneumatic tyred wheels		152
Poisonous plants		60
Pomological Station, Coonoor		108
Potato, scheme, I.C.A.R.		315
" trade		315
Poultry		43, 165, 179, 286, 311
Press jottings		334
Propaganda, methods of		229
Provincial Marketing Board		318
Publications		331, 336

	R	PARAGRAPH NUMBER
<i>Ragi</i>		91, 174, 220
<i>Ragi</i> strains, Anakapalle		182
,, E.C. 593		91, 214, 220, 268, 297
Red gram		83
Red-rot, sugarcane		118
Refractometer, field		191
Research, Agricultural Chemistry		47
,, Collaborative		24
,, Engineer		147
,, Fundamental and Regional		12
,, Station, Aduturai		248
,, ,, Anakapalle		182
,, ,, Gudiyattam		216
,, ,, Guntur		186
,, ,, Hagari		214
,, ,, Kasaragod		271
,, ,, Kovilpatti		261
,, ,, Manganallur		228, 232, 234
,, ,, Maruteru		64
,, ,, Nandyal		215
,, ,, Nanjanad		315
,, ,, Nileshwar		271
,, ,, Palakuppam		219
,, ,, Palur		224
,, ,, Pattambi		64
,, ,, Pattukkottai		249
,, ,, Pilicode		271
,, ,, Samalkota		181
,, ,, Taliparamba		293
,, ,, Tindivanam		216, 219
Retrenchment		3, 197
Rice Production and Trade, enquiry		320
Rice Research Station, Berhampur		170
Rice, varietal collection		65
Ridging implement		153
Roll-easy mhote wheels		21
S		
<i>Sajja</i> (see <i>Oumbu</i>)		90
Scholarships, for backward classes		33
Scientific publications		335
Seed drills		151
Seed Production and Supply		28, 233
<i>Senna</i>		20
Share points		21
Sheep		164
Silage		19, 41, 285
Sim's Park, Coonoor		107

	S—cont.	PARAGRAPH NUMBER
Smut, on <i>cholam</i>		121
„ on sugarcane		120
„ on <i>tenai</i>		121
„ treatment with sulphur powder		201
Soil Physics		49
„ Physicist		13
„ surveys, Cauvery-Mettur Project		48
„ „ Lower Bhavani Project		13, 48
„ „ Malabar		13, 48
„ „ Periar tract		13
„ „ Tanjore delta		227
„ „ Tungabhadra Project		13, 48
Soy beans		20, 193
Stem-bleeding disease of arecanut		116
Stem borer, paddy		131
Stocks for grafting		108
„ importance of		113
Sugarcane		100-106, 172, 191, 207, 218, 236, 276, 298
„ cultural improvements		104
„ I.C.A.R. scheme		4, 18, 100
„ improvement		100
„ iron mills and pans		18
„ irrigation restricted		102
„ manuring		103
„ research		106
„ rotation crops		103
„ short crop		101
„ strain, Co. 213		102
Sugar factory, Hospet		207
„ Vuyyar		191
Sweet flag		20
T		
<i>Takkavi</i> loans		292
Tapioca		280
„ starch from		98
<i>Tenai</i> (see <i>Korra</i>)		92
Teosinte		41
Thrips, chillies		136
Tobacco, improvement		188
Tomatoes		20, 42
Trial plots		26
Turmeric		192
„ polishing device		154

	V	PARAGRAPH NUMBER
Vegetables, Central Farm		42
Veterinary hospital, at Agricultural College		37
,, surgeon at Hosur		155
Villager's Calendar		331
Vitamin, in mango		53
	W	
Waste materials, composting of		50
Water lifts		149
Weeds		59
Wilt, tobacco		124
Windmill pumping plants		150
Wind velocities, gauging of		150
Wood preservation, by Fal-Kamesam process		45
	Y	
Young Men Christian Association		340