

# Tanganyika Territory.



**ANNUAL MEDICAL REPORT.**

**ANNUAL REPORT OF THE SANITARY  
BRANCH OF THE MEDICAL  
DEPARTMENT.**

**REPORT OF THE DAR-ES-SALAAM  
LABORATORY.**



For the Year 1921.

# Annual Medical Report.

## CONTENTS.

### SECTION I.

Administrative :—	PAGE
(a) Medical Staff . . . . .	7
(b) Financial. . . . .	10

### SECTION II.

Public Health :—	PAGE
(a) Vital Statistics . . . . .	11
(b) General Remarks . . . . .	11
Communicable Diseases :—	
(1) Mosquito or Insect Borne . . . . .	20
(2) Infectious or Epidemic. . . . .	22
(3) Helminthic . . . . .	23
(c) European Officials . . . . .	31
(d) Asiatic Officials . . . . .	33
(e) European Non-Officials . . . . .	33
Report on the Health of the King's African Rifles . . . . .	35
Report on the Health of the Police and Prisoners . . . . .	37

### SECTION III.

Hospitals and Dispensaries :—	PAGE
Table " D " showing Staff and Accommodation for each District . . . . .	41
Buildings, Improvements Effected during the Year . . . . .	42
Registration of Medical Practitioners and Dentists . . . . .	44

### TABLES.

I and 1(a) European and Asiatic Staff . . . . .	45
" A " Showing a Return of the Total Cases, In-Patients and Out-Patients of Infective Diseases Treated at the Various Hospitals and Dispensaries in the Territory . . . . .	11A
" B " Showing the Sick, Invaliding and Death Rates of European Officials . . . . .	32

SECTION III—*continued.*TABLES—*continued.*

	PAGE
" C " Shewing the Sick, Invalidings and Death Rates of Asiatic Officials . . . . .	34
" D " Shewing Staff and Hospital Accommodation for each District . . . . .	41
" E " Shewing Total Numbers In-Patients and Deaths and Total Numbers Out-Patients, of the Different Denominations Treated at the Various Stations in the Territory . . . . .	49
" F " Table of Surgical Operations . . . . .	50
" G " Shewing Total Numbers of In-Patients and Out-Patients for all Diseases returned from all Medical Stations . . . . .	53A

## APPENDICES.

1. Treatment of Yaws by Tartar Emetic, by C. B. B. Reid, M.B., Ch.B. (Edin.), District Medical Officer, Tukuyu . . . . .	54
2. A Short Summary of, and Extracts from, the Government Dentist's Report . . . . .	55
3. A Short Report on Lutindi Lunatic Asylum . . . . .	56
4. Notes on the Treatment of Yaws with Bismutho—Sodium and Potassium Tartrate—by J. O. Shircore, Acting Principal Medical Officer . . . . .	57

## SECTION IV.

Sanitation . . . . .	63
----------------------	----

## SECTION V.

Laboratory . . . . .	179
----------------------	-----

## INDEX.

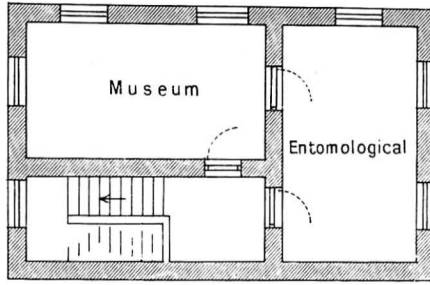
	PAGE
Accommodation, Hospitals and Dispensaries . . . . .	41
Table showing present Staff and Accommodation in each District	41
Agglutinations . . . . .	193
Ankylostomiasis . . . . .	98
Anti-malarial Measures—	
(a) Major . . . . .	114
(b) Minor . . . . .	115
Anthrax . . . . .	12
Appointments to Staff . . . . .	8
Asiatic Officials, Health of . . . . .	33
Table showing Invaliding, Sick and Death Rate . . . . .	34
Beri-Beri . . . . .	12
Birth Rate . . . . .	82, 127
Blackwater Fever . . . . .	20
Blood Culture . . . . .	195
„ Films . . . . .	160, 189
Buildings, repairs to . . . . .	42, 184
Cerebro-Spinal Meningitis . . . . .	99
Cestoda . . . . .	53a
Chemical Examinations . . . . .	200
Climate in relation to Health . . . . .	109
Communicable Diseases . . . . .	12
Death Rate . . . . .	82, 127
Dental Surgeon, Report by. Appendix No. II. . . . .	55
Drainage, Work done . . . . .	145
Dysentery . . . . .	12
Enteric Fever . . . . .	12, 109
Epidemic Diseases . . . . .	84
Erysipelas . . . . .	11a
European Officials, Health of . . . . .	31
Table of Invalidings . . . . .	31
Table of Sick, Invalidings and Death Rates . . . . .	32
Fæces . . . . .	195
Financial . . . . .	74
Gonorrhœa . . . . .	27
Helminthic Diseases . . . . .	23
Hill Stations . . . . .	111
Infantile Mortality . . . . .	82
Infectious Diseases . . . . .	84, 131
Influenza . . . . .	13, 87
Intestinal Parasites of Prisoners . . . . .	217
Invalidings . . . . .	31
Laboratory—Introductory Remarks on :—	
Staff, Building, Equipment, etc. . . . .	183

Leprosy . . . . .	13, 99, 224
Lunatic Asylum. Appendix No. III. . . . .	56
Lymph . . . . .	88
Malarial Cases: Rainfall and Incidence of. Appendix No. V. . . . .	103, 111
Measles . . . . .	21
Medical Staff . . . . .	7
Medico-Legal . . . . .	200
Meteorological . . . . .	123, 203
Mosquito Borne Diseases . . . . .	136
Nematoda . . . . .	53a
Plague . . . . .	21, 91
Pneumonia . . . . .	21
Population . . . . .	80, 125
Public Health: General Remarks . . . . .	11
Vital Statistics . . . . .	11
Pus . . . . .	197
Pyrexia of Uncertain Origin . . . . .	73
Railway Sanitation . . . . .	155
Rainfall and Incidence of Malarial Cases. Appendix No. V. . . . .	103, 111
Rat Examinations . . . . .	203
Registration of Medical Practitioners . . . . .	44
Relapsing Fever . . . . .	22, 190
Sanitation, Administration and Staff . . . . .	72
Sanitary Progress, Review of . . . . .	69
Sanitary Surveys and Inspections . . . . .	79
School Medical Service . . . . .	158
Scraping from Nodules and Ulcers . . . . .	198
Sex Distribution . . . . .	81
Sleeping Sickness . . . . .	7
Smallpox . . . . .	85
Special Investigations . . . . .	216
Spheres of Action of Sanitation Branch . . . . .	77
Spirillum Fever. <i>See</i> Relapsing Fever . . . . .	
Sputum . . . . .	198
Statistics, Vital . . . . .	11
Syphilis, Cases Treated . . . . .	29
Town Planning . . . . .	154
Trypanosomiasis . . . . .	24, 191
Tuberculosis . . . . .	102
Tumours . . . . .	199
Typhus . . . . .	33
Urban Sanitation . . . . .	113
Urines . . . . .	196
Vaccination . . . . .	25, 134, 161
Veneral Diseases . . . . .	27
Wassermann Reactions . . . . .	195
Water Analysis . . . . .	201
Yaws. Appendices Nos. I. and IV. . . . .	23, 54, 58

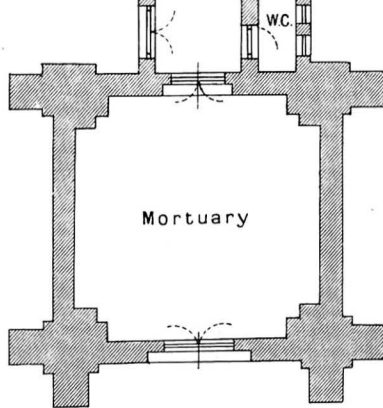
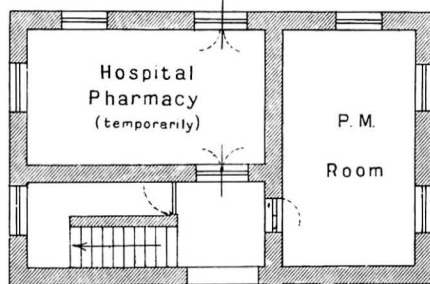
# BACTERIOLOGICAL LABORATORY

Dar - es - Salaam.

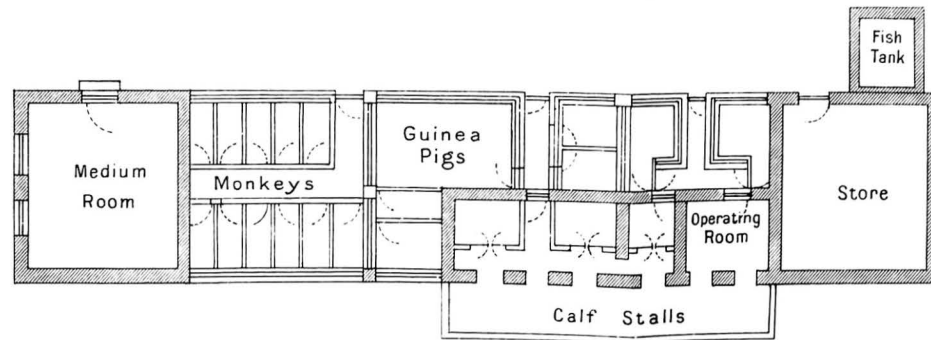
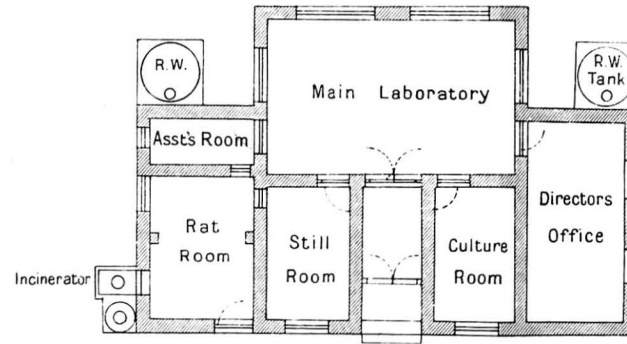
Scale: 1/4" = 1 Metre



— 1ST FLOOR —



— GROUND FLOOR —



— ANIMAL HOUSE —