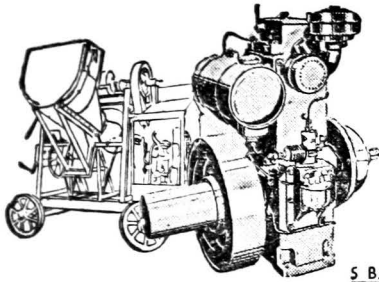


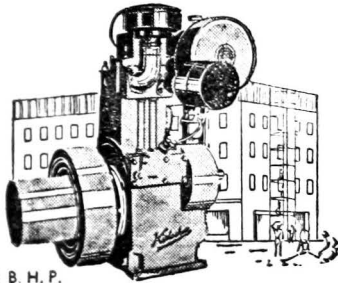
**BANKING IN MAHARASHTRA  
AND  
ADJOINING REGION**

*23rd Nov. 1957*

**ECCAN BANKS' ASSOCIATION  
&  
OONA BANKERS' ASSOCIATION**



5 B. H. P.



10 B. H. P.



Choose your  
Construction Machinery  
fitted with

*Kirloskar*

**DIESEL ENGINES**

*K*IRLOSKAR diesel engines are used for all industrial and engineering purposes. Outstanding reliability, rigid construction and efficient performance—the outcome of years of experience in sound design and workmanship—make Kirloskar diesel engines popular in the field of constructive engineering.

These engines are designed in such a way that they can be handled easily even by unskilled labour.



**KIRLOSKAR OIL ENGINES LTD., KIRKEE, POONA 3**

MODEL S-1 36

TOM & BAY LTD. (R)

**BANKING IN MAHARASHTRA  
AND  
ADJOINING REGION**

*23rd Nov. 1957*

Price Rs. 2/—

**DECCAN BANKS' ASSOCIATION  
&  
POONA BANKERS' ASSOCIATION**

# उद्योगधंधांम हातभार !

भांडवल : (३१-१०-१९५७)

वसूल भांडवल: (भागांपोटी आगाऊ  
जमा झालेली रक्कम धरून-)

रु. २१,००,०००।- चे वर

गंगाजळी व इतर निधि :

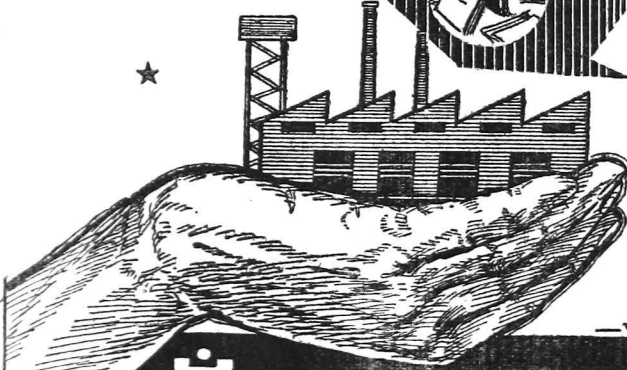
रु. १०,००,०००।-

एकूण खेळते भांडवल :

रु. ८,५०,००,०००।- चे वर

★ ★

★



—परमेश्वर लि.

दि बँक ऑफ महाराष्ट्र लि

बा जी रा व र स्ता • पु र्णे • २

## Foreword

Much literature on Economics and particularly on Banking has dealt with the rise and origin of the Joint Stock Banking in India, its structure and its working. The lacuna in the field of co-operative banking has also been filled to a certain extent in recent years. No attempt was, however, made to study the growth and working of Joint Stock Banks and co-operative banks on a regional basis heretofore.

The Poona Bankers' Association and Deccan Banks' Association have undertaken the onerous responsibility of bringing out the Souvenir on joint stock banking and co-operative banking in Maharashtra on the occasion of the Conference of Banks in Maharashtra and adjoining Region to be held on 23rd and 24th November 1957.

A large part of Maharashtra is economically backward and though banking habit, both joint stock as well as co-operative, is of very recent origin, it has caught the imagination of the large masses and it is reflected in the rapid growth of these two systems of banking. The Souvenir contains very useful information on banking in Maharashtra and the various banking facilities offered both by co-operative and joint stock banking institutions. A notable feature is the inclusion of a chapter on the Pilot Scheme of the State Bank of India for providing credit facilities to small-scale industries. The authors of the Souvenir deserve congratulations in bringing out in a small publication all information relating to Banking in Maharashtra.

Bombay,  
6th November 1957

V. P. Varde

# BANK OF POONA LIMITED

## Scheduled Bank

Authorised Capital ... ..	Rs. 50,00,000
Issued and Subscribed Capital ... ..	Rs. 25,00,000
Paid up Capital ... ..	Rs. 12,50,000

### Board of Directors :

- |  |  |
|--|--|
| 1. Shri D. R. Naik, J. P.<br><i>Chairman</i> | 2. Dr. N. B. Parulekar, M. A. Ph. D.<br><i>Vice-Chairman</i> |
| 3. Shri F. P. Pocha.                         | 4. Shri G. K. Naik, B. Sc., B. E. LL. B.                     |

### BRANCHES :

- |                                       |                                     |                            |
|---------------------------------------|-------------------------------------|----------------------------|
| 1. 361, Sadashiv Peth,<br>Poona 2.    | 2. 54, Deccan Gymkhana,<br>Poona 4. | 3. Wakhar bhag,<br>Sangli. |
| H. O. 455 Raviwar Peth, }<br>POONA 2. |                                     | G. G. Sathe,<br>Manager    |

# THE PRESIDENCY INDUSTRIAL BANK LIMITED

HEAD OFFICE  
POONA-2

BOMBAY BRANCH  
82 Medows Street, BOMBAY-1

Rates of interest : 1% on current deposits  
2 $\frac{3}{4}$ % on Savings Bank Deposits

*Attractive Rates on Call and time deposits*  
*All kinds of Banking business transacted*

**G. D. JOGLEKAR**  
B. A. (Hons) B. Com. LL. B.  
MANAGER

# CONTENTS

Foreword ... ..	3
Introduction ... ..	5
Banking Map of the Region ... ..	
Joint Stock Banking in Maharashtra and Adjoining region ... ..	9
Table relating to working of Banks outside this Region ... ..	15
Statistical Tables Relating to Joint Stock Banks...	18
List of Towns not served by Banks in Maharashtra ... ..	26
Co-operative Banking in Maharashtra ... ..	29
Tables relating to Co-operative Banks ... ..	34
“Pilot Scheme” for small scale Industries by State Bank of India ... ..	37
List of Branches of Banks ... ..	I to XIV
List of Branches of Banks incorporated in this Region, having offices outside the Region ... ..	XV to XVII
Advertisements	



## Branches, Sub-Offices and Pay Offices of Banks in Maharashtra & Adjoining Region

### A

- Achalpur** (Ellichpur) (Bombay)  
—(50,794)  
Achalpur Central Co-operative Bank (H. O.)  
Laxmi Bank (B)  
State Bank of India (B)
- Aduvad** (Bombay)  
East Khandesh Central Co-operative Bank (B)
- Ahmednagar** (Bombay) (Cantt. 24, 402; Munc. 80,873)  
Bank of Maharashtra (B)  
Bombay State Co-operative Bank (B)  
Central Bank of India (P. O.)  
Devkaran Nanjee Banking Co. (B)  
Nagar District Central Urban Co-operative Bank (H. O.)  
New Citizen Bank of India (B)  
State Bank of India (B)
- Ahwa** (Bombay) (2,013)  
Bombay State Co-operative Bank (B)
- Ajra** (Bombay) (5, 353)  
Bombay State Co-operative Bank (B)  
Ichalkaranji Central Co-operative Bank (B)
- Akalkot** (Bombay) (18,112)  
Sholapur District Central Co-operative Bank (B)  
State Bank of India (P. O.)
- Akluj** (Bombay) (20,292)  
Bombay State Co-operative Bank (B)
- Akola** (Ahmednagar) (Bombay) (5,008)  
Bombay State Co-operative Bank (B)
- Akola** (Bombay) (89,606)  
Akola Central Co-op. Bank (H. O.)  
Allahabad Bank (B)
- Bank of Maharashtra (B)  
Central Bank of India (B)  
Laxmi Bank 2 (R. O.) (B)  
New Citizen Bank of India (B)  
Punjab National Bank (B)  
State Bank of India (B)
- Akot** (Bombay) (24, 255)  
Akola Central Co-operative Bank (B)  
Laxmi Bank (B)
- Alibag** (Bombay)  
State Bank of India (B)
- Amalner** (Bombay) (44,646)  
Amalner Urban Co-opt. Bank (H. O.)  
East Khandesh Central Co-operative Bank (B)  
State Bank of India (B)
- Ambarnath** (Bombay) (21,498)  
Kalyan People's Co-operative Bank (B)
- Amraoti** (Bombay) (1,02,806)  
Amraoti Central Co-op. Bank (H. O.)  
Bank of Maharashtra (B)  
Bank of Nagpur (B)  
Central Bank of India (S. B.)  
Laxmi Bank (B)  
Madhya Pradesh Co-operative Bank (B)  
New Citizen Bank of India (B)  
Punjab National Bank (B)  
State Bank of India (B)
- Arvi** (18,223)  
Bank of Nagpur (B)  
State Bank of India (P. O.)  
Wardha Central Co-operative Bank
- Atpadi** (8,705)  
South Satara District Central Co-operative Bank (B)
- Aundh** (1,223)  
Bank of Aundh (B)



**Aurangabad (66,636)**

Aurangabad Central Co-operative Bank (H. O.)  
 Bank of Maharashtra (B)  
 Central Bank of India (S. B.)  
 State Bank of Hyderabad (B)

**B****Bamrod**

East Khandesh Central Co-operative Bank (B)

**Banda (4,154)**

Bank of Konkan (B)

**Baramati (17,064)**

Bharat Industrial Bank (B)  
 Devkaran Nanjee Banking Co. (S.O.)  
 Poona District Central Co-operative Bank (B)  
 State Bank of India (B)

**Barsi (41,849)**

Barsi Central Co-opt. Bank (H.O.)  
 Belgaum Bank (B)  
 Central Bank of India (P. O.)  
 Miraj State Bank (B)  
 United Western Bank (B)

**Bassein (19,640)**

Bombay State Co-operative Bank (B)

**Bavla (8,374)**

Punjab National Bank (P. O.)

**Bhadgaon (9,329)**

East Khandesh Central Co-operative Bank (B)

**Bhalod (6,480)**

East Khandesh Central Co-operative Bank (B)

**Bhandara (22,640)**

Bhandara Central Co-operative Bank (H. O.)  
 Laxmi Bank (B)  
 Safe Bank (B)  
 State Bank of India (B)

**Bhavaninagar (1000)**

Bank of Aundh (B)

**Bhir (25,636)**

Bhir Central Co-opt. Bank (H. O.)  
 State Bank of Hyderabad (B)

**Bhiwandi (25,764)**

Bank of Maharashtra (B)  
 Bombay State Co-operative Bank (B)  
 Jodhpur Commercial Bank (B)

**Bhor (7,393)**

Bhor State Bank (R. O.)  
 Poona District Central Co-operative Bank (B)

**Bhusawal (54,346)**

Bhusawal People's Co-operative Bank (H. O.)  
 East Khandesh Central Co-operative Bank (B)  
 Laxmi Bank (B)  
 State Bank of India (B)

**Bodwad (9,179)**

East Khandesh Central Co-operative Bank (B)

**Bombay (28,39,270)**

Allahabad Bank (2 B)  
 American Express Co. Inc. (B)  
 Bank of Baroda (6 B) (5 S. B.)  
 Bank of Bikaner (2 B)  
 Bank of China (S. O.)  
 Bank of India 8 (R. O.) (6 B) (S. O.)  
 Bank of Indore (2 B)  
 Bank of Jaipur (4 B)  
 Bank of Konkan (B)  
 Bank of Maharashtra (4 B)  
 Bank of Mysore (B)  
 Bank of Rajasthan (B)  
 Bank of Tokyo (B)  
 Bhandari Co-operative Bank (H. O.)  
 Bombay Accountant General Employee's Co-operative Bank (H. O.)  
 Bombay Mercantile Co-operative Bank 3 (H. O.) (2 B)  
 Bombay Provincial Co-operative Land Mortgage Bank (H. O.)

Bombay Secretariat Co-operative Bank (H. O.)  
 Bombay State Co-operative Bank 2 (H. O.) (B)  
 British Bank of Middle East (B)  
 C. K. P. Co-operative Bank (H. O.)  
 Canara Bank (8 B)  
 Canara Banking Corporation (2 B)  
 Canara Industrial & Banking Syndicate (B)  
 Central Bank of India 13 (R. O.) (12 S. B.)  
 Central Railway Employee's Co-operative Bank (H. O.)  
 Chartered Bank (B)  
 City Co-operative Bank 3 (H. O.) (2 B)  
 Comptoir National D' Escompte de Paris (B)  
 Daxini Brahmins' Co-operative Bank 2 (H. O.) (S. B.)  
 Deccan Merchants' Co-operative Bank 2 (H. O.) (B)  
 Devkaran Nanjee Baking Co. 16 (R. O.) (10 S. B.) (5 S. O.)  
 Eastern Bank (B)  
 First National City Bank of New York (B)  
 Gadodia Bank 2 (R. O.) (B)  
 Grindlays Bank (B)  
 Habib Bank (B)  
 Hind Bank (B)  
 Hindustan commercial Bank 2 (B) (S. B.)  
 Hindustan Mercantile Bank (B)  
 Hongkong and Shanghai Banking Corporation (B)  
 India United Mill's Staff Co-operative Bank (H. O.)  
 Indian Bank (3 B)  
 Indian Overseas Bank (2 B)  
 Ismalia co-operative Bank (H. O.)  
 Jackson Co-operative Bank (H. O.)  
 Jodhpur Commercial Bank 4 (C. O.) (3 B)

Kapole Co-operative Bank (H. O.)  
 Khudabadi Bhaiband Co-operative Bank (H. O.)  
 Laxmi Bank (2 B)  
 Lloyds Bank 2 (B) (S. B.)  
 Maratha Mandir Co-opt. Bank (H. O.)  
 Maratha Market Peoples' Co-operative Bank (H. O.)  
 Mercantile Bank of India (B)  
 Mitsui Bank (B)  
 Moghvir Co-operative Bank (H. O.)  
 Municipal Co-operative Bank (H. O.)  
 National Bank of India (B)  
 Netherlands Trading Society (B)  
 New Citizen Bank of India 8 (R. O.) 7 (B)  
 North Kanara Goud Saraswat Co-operative Bank 2 (H. O.) (B)  
 Presidency Industrial Bank (B)  
 Punjab National Bank 10 (7 B) 2 (P. O.) (S. P. O.)  
 Reserve Bank of India.  
 Safe Bank (B)  
 Sangli Bank (B)  
 Sanmitra Co-operative Bank (H. O.)  
 Saraswat co-operative Bank 4 (H. O.) (3 B)  
 Shamrao Vithal Co-operative Bank 3 (H. O.) (2 B)  
 South Indian Co-opt. Bank (H. O.)  
 State Bank of Hyderabad (2 B)  
 State Bank of India 5 (H. O.) (4 B)  
 State Transport Co-op. Bank (H. O.)  
 Travancore Bank (B)  
 Union Bank of India 7 (R. O.) (6 B)  
 United Bank of India (B)  
 United Commercial Bank 5 (B) (4 S. B.)  
 United Western Bank 2 (C. O.) (S. O.)  
 Vijaya Bank (B)  
 Zoroastrian Co-op. Bank (H. O.)

#### Borivali

Devkaran Nanjee Banking Co. (S. O.)

**Brahmapuri (7,117)**

Brahmapuri Central Co-operative Bank (H. O.)

**Buldhana (Bombay) (10,797)**

Buldhana Central Co-operative Bank (H. O.)

Madhya Pradesh Co-op. Bank (B)

**C****Chalisgaon (30,345)**

Bank of Maharashtra (B)

Chalisgaon peoples' Co-operative Bank (H. O.)

East Khandesh Central co-operative Bank (B)

State Bank of India (B)

**Chanda (40,744)**

Allahabad Bank (B)

Bank of Nagpur (B)

Laxmi Bank (B)

Madhya Pradesh Co-op. Bank (B)

New Citizen Bank of India (B)

State Bank of India (B)

**Chandur**

Amraoti Central Co-op. Bank (B)

**Chimur (6,018)**

Warora Central Co-op. Bank (B)

**Chiplun (15,847)**

Belgaum Bank (B)

Chiplun Urban Co-op. Bank (H. O.)

**Chopda (22,832)**

Chopda Peoples' Co-op. Bank (H. O.)

East Khandesh Central Co-operative Bank (B)

**D****Dahanu (8,904)**

Bombay State Co-operative Bank (B)

State Bank of India (S. P. O.)

**Dapoli (3,958)**

Bombay state co-operative Bank (B)

Chiplun Urban Co-operative Bank (B)

**Darwah (10,074)**

Darwah Central Co-operative Bank (H. O.)

State Bank of India (P. O.)

**Daryapur (18,065)**

Daryapur Central Co-operative Bank (H. O.)

**Deglar**

Nanded Central Co-op. Bank (B)

**Deolali (Cantt : 27,075 Muncd-26,885)**

New Citizen Bank of India (S. O.)

State Bank of India (B)

**Deorukh (6,470)**

Ratnagiri Urban Co-op. Bank (B)

**Desai Ganj**

Brahmapuri Central Co-op. Bank (B)

**Devgad (2,493)**

Belgaum Bank (B)

**Dhamangaon (10, 883)**

Bank of Nagpur (B)

Laxmi Bank (B)

**Dharangaon (21, 186)**

East Khandesh Central Co-operative Bank (B)

**Dhari (5,768)**

Bombay State Co-operative Bank (B)

**Dharmabad (8,993)**

State Bank of Hyderabad (P. O.)

**Dhulia (76,880)**

Bank of Baroda (B)

Bank of Maharashtra (B)

Bombay State Co-operative Bank (B)

Dhulia Urban Co-opt. Bank (H. O.)

New Citizen Bank of India (B)

Punjab National Bank (S. O.)

Rajwade Mandal Peoples' Co-operative Bank (H. O.)

State Bank of India (B)

West Khandesh Govt. Servants' Co-operative Bank (H. O.)

**Dombiwali (8,106)**

Kalyan Peoples' co-operative Bank (B)

**Dondaicha (10,920)**

Bombay State Co-operative Bank (B)

**E****Etlabad (4,363)**

East Khandesh Central Co-operative Bank (B)

**Erandol (15,042)**

East Khandesh Central Co-operative Bank (B)

**F****Faizpur (12,210)**

East Khandesh Central Co-operative Bank (B)

**Fattepur**

East Khandesh Central Co-operative Bank (B)

**G****Gadhinglaj (8,546)**

Belgaum Bank (B)

Bombay State Co-operative Bank. (B)

Shri Veershaiv Urban Co-operative Bank (B)

**Ganespur (2,392)**

Ganesh Bank of Kurundwad (B)

**Gargoti (Bombay) (3,029)**

Bombay State Co-operative Bank (B)

**Ghodegaon (6,732)**

Poona District Central Co-operative Bank (B)

**Ghod-Nadi (sirur) (3,482)**

Poona District Central Co-operative Bank (B)

**Ghoti (4,309)**

Nasik District Central Co-operative Bank (B)

**Gondia (36,686)**

Bank of Nagpur (B)

Bhandara Central Co-op. Bank (B)

Laxmi Bank (B)

Punjab National Bank (S. O)

State Bank of India (B)

**Goregaon**

Lallubhai Samaldas Co-operative Bank (H. O.)

**Guhagar (5,031)**

Chiplun Urban Co-operative Bank (B)

**H****Halkarni (3,793)**

United Western Bank (B)

**Halol (8,091)**

Halol Co-operative Bank (H. O)

**Hatkalangade (3,914)**

Kolhapur District Co-opt. Bank (B)

**Hinganghat (32,868)**

Bank of Nagpur (B)

Laxmi Bank (B)

Punjab National Bank (P. O.)

State Bank of India (P. O.)

**Hupri (7,039)**

Commercial Bank (Kolhapur) (B)

**I****Ichalkaranji (27,423)**

Commercial Bank (Kolhapur) (B)

Ichalkaranji Central Co-operative Bank (H. O.)

Kolhapur District Central Co-operative Bank (B)

New Citizen Bank of India (B)

Sangli Bank (B)

**Indapur (4,981)**

Poona District Central Co-operative Bank (B)

**Islampur (16,113)**

Bank of Karad (B)

Bombay State Co-operative Bank (B)

South Satara District Central Co-operative Bank (B)

**J****Jalgaon (68,412)**

Bank of Baroda (B)

Bank of Maharashtra (B)

- East Khandesh Central Co-operative Bank (H. O.)  
 Jalgaon People's Co-operative Bank 2 (H. O.) (B)  
 Laxmi Bank (B)  
 New Citizen Bank of India (B)  
 Punjab National Bank (B)  
 State Bank of India (B)
- Jalgaon** (Buldhana) (Bombay) (9,464)  
 Khamgaon Central Co-operative Bank (B)
- Jalna** (58,478)  
 Bank of Maharashtra (B)  
 Central Bank of India (B)  
 Jalna Central Co-op. Bank (H. O.)  
 State Bank of Hyderabad (B)
- Jamkhed** (Bombay)  
 Bombay State Co-operative Bank (B)
- Jamner** (10,554)  
 East Khandesh Central Co-operative Bank (B)
- Jath** (7,005)  
 South Satara District Central Co-operative Bank (B)
- Jaysingpur** (8,048)  
 Belgaum Bank (B)  
 Kolhapur District Central Co-operative Bank (B)  
 Ratnakar Bank  
 Shri Mahavir Co-operative Bank (B)
- Junnar** (11,632)  
 Poona District Central Co-operative Bank (B)
- K**
- Kagal** (9,821)  
 Kagal Central Co-op. Bank (H. O.)
- Kalwan** (5,018)  
 Nasik District Central Co-operative Bank (B)
- Kalyan** (58,900)  
 Bank of Maharashtra (B)  
 Bombay State Co-op. Bank (B)  
 Canara Bank (B)
- Jodhpur Commercial Bank (B)  
 Kalyan Peoples' Co-opt. Bank (H. O.)  
 Sind National Bank (P. O.)  
 State Bank of India (B)
- Kanakaavli** (4,467)  
 Belgaum Bank (B)
- Kandivali** (Bombay)  
 Devkaran Nanjee Banking Co. (S. O.)
- Karad** (25,721)  
 Bank of Karad (R. O.)  
 Canara Industrial and Banking Syndicate (B)  
 Karad Urban Co-op. Bank (H. O.)  
 Sangli Bank (B)  
 Satara (North) District Central Co-op. Bank (B)  
 Satara (North) District Local Board Primary Teachers' Co-op. Society (H. O.)  
 Satara Swadeshi Commercial Bank (B)  
 Uttar Satara District Local Board Dakshin Bhag Primary Teachers' Co-op. Bank (H. O.)
- Karanja** (22,098)  
 Laxmi Bank (B)  
 New Citizen Bank of India (B)  
 State Bank of India (P. O.)
- Karjat** (3,744)  
 Bombay State Co-op. Bank (B)
- Karmala** (8,206)  
 Miraj State Bank (B)  
 Sholapur District Central Co-op. Bank (B)
- Kasgaon** (2,928)  
 East Khandesh Central Co-op. Bank (B)
- Katol** (12,851)  
 Nagpur Central Co-op. Bank (B)
- Kavathe Mahankal** (3,717)  
 Sangli Bank (B)
- Khamgaon** (36,734)  
 Central Bank of India (P. O.)

Khamgaon Central Co-op. Bank  
 (H. O.)  
 Laxmi Bank (B)  
 Madhya Pradesh Co-op. Bank (B)  
 Punjab National Bank (P. O.)  
 State Bank of India (B)  
**Khed (11,750)**  
 Poona District Central Co-op. Bank  
 (B)  
**Khopoli (1,693)**  
 Bharat Industrial Bank (B)  
**Kirkee (48,552)**  
 Bank of Maharashtra (B)  
 Punjab National Bank (P. O.)  
**Kirloskarwadi (1,683)**  
 Bank of Maharashtra (B)  
**Kodinar (9,469)**  
 Kodinar Taluka Co-operative Banking  
 Union (H. O.)  
**Kolhapur (1,36,835)**  
 Bank of Maharashtra (B)  
 Bombay State Co-op. Bank (2B)  
 Canara Industrial & Banking Syndi-  
 cate (B)  
 Central Bank of India (P. O.)  
 Commercial Bank (Kolhapur) (R. O.)  
 Kolhapur Balbhim Co-op. Bank  
 (H. O.)  
 Kolhapur District Central Co-op.  
 Bank (H. O.)  
 Kolhapur Govt. Servants' Co-op.  
 Bank (H. O.)  
 Kolhapur Maratha Co-operative  
 Bank (H. O.)  
 Kolhapur Urban Co-op. Bank (H. O.)  
 New Citizen Bank of India 2(B) (S. O.)  
 Ratnakar Bank 2(B) (R. O.)  
 Sangli Bank (B)  
 Shri Mahalaxmi Urban Co-op. Bank  
 (H. O.)  
 Shri Mahavir Co-op. Bank (H. O.)  
 Shri Veershaiv Urban Co-op. Bank  
 (H. O.)

State Bank of India (B)  
 United Commercial Bank (B)  
 United Western Bank (B)  
**Kolpewadi**  
 Bombay State Co-op. Bank (B)  
**Kopergaon (11,616)**  
 Bank of Maharashtra (B)  
 Bombay State Co-op. Bank (B)  
 Kopergaon Peoples' Co-op. Bank  
 (H. O.)  
 New Citizen Bank of India (P. O.)  
 State Bank of India (P. O.)  
**Koregaon (7,230)**  
 Koregaon Peoples' Co-op. Bank  
 (H. O.)  
 Satara ( North ) District Central  
 Co-op. Bank (B)  
 Satara Swadeshi Commercial Bank (B)  
**Kudal (5,852)**  
 Bank of Konkan (B)  
 Bombay State Co-op. Bank (B)  
**Kurduwadi (10,802)**  
 Miraj State Bank (B)  
 Sholapur District Central Co-op.  
 Bank (B)  
**Kurla Kadoda**  
 East Khandesh Central Co-operative  
 Bank (B)  
**Kurundwad (9,744)**  
 Ganesh Bank of Kurundwad (R. O.)  
 Kurundwad Urban Co-op. Bank  
 (H. O.)

## L

**Lasalgaon (4,200)**  
 Bombay State Co-op. Bank (B)  
 State Bank of India (P. O.)  
**Latur (35,374)**  
 Central Bank of India (S. B.)  
 State Bank of Hyderabad (B)  
**Lonand (5,120)**  
 New Citizen Bank of India (S. O.)  
 United Western Bank (B)

**Lonavala (16,771)**

Bharat Industrial Bank (B)

**Loni (3,997)**

Bombay State Co-operative Bank (B)

**M****Madha (6,805)**Sholapur District Central Co-op.  
Bank (B)**Madhavnagar (4,966)**

Sangli Urban Co-operative Bank (B)

**Mahad (10,267)**Mahad Urban Co-op. Bank (H. O.)  
New Citizen Bank of India (B)**Malad**

Devkaran Nanji Banking Co. (S. O.)

**Malegaon (55,022)**Bambay State Co-operative Bank (B)  
Devkaran Nanjee Banking Co. (S. O.)  
New Citizen Bank of India (B)**Malkapur (3,299)**Kolhapur District Central Co-op.  
Bank (B)**Malvan (29,851)**Bank of Konkan (R. O.)  
Belgaum Bank (B)  
Canara Industrial and Banking Syndi-  
cate (B)  
Malvan Urban Co-op. Bank (B)**Manchar (7782)**

Poona Dist. Cent. Co-op. Bank (B)

**Mangalvedha (9265)**Sangli Bank (B)  
Sholapur Dist. Cent. Co-op. Bank (B)**Manmad (18,350)**Bombay State Co-operative Bank (B)  
Devkaran Nanjee Banking Co. (S. O.)**Manwath (15,684)**

State Bank of Hyderabad (P. O.)

**Marwad**East Khandesh Central Co-operative  
Bank (B)**Masur (5,814)**

Satara Swedeshi Commercial Bank (B)

**Mehkar (9,256)**

Mehkar Central Co-op. Bank (H. O.)

**Mehunbara (3,373)**East Khandesh Central Co-operative  
Bank (B)**Mhaswad (9,145)**East Khandesh Central Co-operative  
Bank (B)**Miraj (40,224)**Belgaum Bank (B)  
Miraj State Bank (R. O.)  
New Citizen Bank of India (B)  
Ratnakar Bank (B)  
South Satara District Central Co-op.  
Bank (B)  
State Bank of India (B)**Modasa (10,930)**

Bombay State Co-operative Bank (B)

**Modnimb (4,348)**Sholapur District Central Co-op.  
Bank (B)**Mohol (7,968)**Sholapur District Central Co-op.  
Bank (B)**Mominabad**

Bhir Central Co-op. Bank (B)

**Morsi (9,798)**

Morsi Central Co-op. Bank (H. O.)

**Mul**

Brahmapuri Central Co-op. Bank (B)

**Murbad (4,583)**

Bombay State Co-operative Bank (B)

**Murgud (5,637)**

Bombay State Co-operative Bank (B)

**Murtizapur (15,352)**

New Citizen Bank of India (B)

**N****Nagpur (4,49,099)**

Allahabad Bank (2 B)

- Bank of Bikaner (B)  
 Bank of India (2 B)  
 Bank of Maharashtra (B)  
 Bank of Nagpur 3 (R. O. (2 B)  
 Canara Bank (B)  
 Central Bank of India 2 (B) (S. B.),  
 Laxmi Bank (B)  
 Madhya Pradesh Co-operative Bank 2  
 (H. O.) (B)  
 Nagpur Central Co-opt. Bank (H. O.)  
 New Citizen Bank of India (2 B)  
 Punjab National Bank 2 (B) (S. O.)  
 Reserve Bank of India  
 Safe Bank 2 (R. O.) (B)  
 State Bank of India 2 (B) (P. O.)  
 United Commercial Bank 2 (B) (S. B.)
- Nampur (4,294)**  
 Nasik District Central Co-operative  
 Bank (B)  
 New Citizen Bank of India (B)
- Nanded (65,024)**  
 Bank of Maharashtra (B)  
 Central Bank of India (P. O.)  
 Nanded Central Co-opt. Bank (H. O.)  
 State Bank of Hyderabad (B)  
 State Bank of India (B)
- Nandgaon (9,259)**  
 Bombay State Co-operative Bank (B)
- Nandura (15,722)**  
 Malkapur Central Co-opt. Bank (B)  
 State Bank of India (S. P. O.)
- Nandurbar (30,144)**  
 Bombay State Co-operative Bank (B)  
 New Citizen Bank of India (B)  
 State Bank of India (B)
- Narayangaon (5,687)**  
 Poona District Central Co-operative  
 Bank (B)
- Nardana (3,240)**  
 Bombay State Co-opt. Bank (P. O.)
- Nasik (97,042)**  
 Bank of Maharashtra (B)  
 Bombay State Co-operative Bank (B)
- Devkaran Nanjee Banking Co. 2 (B)  
 (S. O.)  
 Nasik District Central Co-operative  
 Bank (H. O.)  
 New Citizen Bank of India 2 (B) (S.O.)  
 Punjab National Bank 2 (B) (S. O.)  
 State Bank of India (B)  
 United Western Bank (B)
- Nasirabad (15,709)**  
 East Khandesh Central Co-operative  
 Bank (B)
- Nateputa (3,771)**  
 Bombay State Co-operative Bank (B)
- Neri**  
 East Khandesh Central Co-operative  
 Bank (B)
- Newasa (5,146)**  
 Bombay State Co-operative Bank (B)
- Nhavi**  
 East Khandesh Central Co-operative  
 Bank (B)
- Nimbhora (1,175)**  
 East Khandesh Central Co-operative  
 Bank (B)
- Nira**  
 Poona District Central Co-operative  
 Bank (B)
- O**
- Ogalewadi (1,259)**  
 Bank of Aundh (B)  
 Satara Swadeshi Commercial Bank (B)
- Osmanabad (15,007)**  
 Osmanabad Urban Co-operative Bank  
 (H. O.)  
 State Bank of Hyderabad (B)
- Ozar (6,812)**  
 Bharat Industrial Bank (B)
- P**
- Pachora (15,044)**  
 Bank of Baroda (B)  
 East Khandesh Central Co-operative  
 Bank (B)  
 State Bank of India (B)



- Palghar (7,168)**  
Bombay State Co-operative Bank (B)
- Pali (1,251)**  
Bhor State Bank (B)
- Pandharpur (40,514)**  
Miraj State Bank (B)  
New Citizen Bank of India (B)  
Pandharpur Urban Co-operative Bank (H.O.)  
Punjab National Bank (P. O.)  
Sholapur District Central Co-operative Bank (B)
- Pandhurna (14,037)**  
State Bank of India (P. O.)
- Panvel (14,861)**  
Bank of Maharashtra (B)  
Bombay State Co-operative Bank (B)
- Parbhani (33,446)**  
Parbhani Central Co-op. Bank (H.O.)  
State Bank of Hyderabad (B)  
State Bank of India (B)
- Parner**  
Bombay State Co-op. Bank (B).
- Parola (15,605)**  
East Khandesh Central Co-operative Bank (B)
- Patan (N. Satara)**  
Satara (North) District Central Co-operative Bank (B)
- Pathardi (9,952)**  
Bombay State Co-operative Bank (B)
- Patonde**  
East Khandesh Central Co-operative Bank (B)
- Paud**  
Poona District Central Co-operative Bank (B)
- Pen (8,607)**  
New Citizen Bank of India (B)  
Pen Urban Co-op. Bank Ltd. (R.O.)
- Phaltan (12,142)**  
Phaltan Bank (R.O.)  
Laxmi Central Co-op. Bank (H.O.)
- Pimpalgaon (6,555)**  
Nasik District Central Co-operative Bank (B)  
New Citizen Bank of India (B)
- Pimpri**  
United Commercial Bank (S. B.)
- Poona (Cantt. 59,011 ; Muncl. 4,80,982)**  
Bank of Baroda (2 B)  
Bank of India (2B)  
Bank of Maharashtra 4 (R. O.) (3B)  
Bank of Poona 3 (R.O.) (2B)  
Bharat Industrial Bank 2 (R.O.) (B)  
Bhor State Bank (B)  
Central Bank of India 2 (B) (S.B.)  
Cosmos Urban Co-op. Bank (H. O.)  
Diamond Jubilee Co-op. Bank (H.O.)  
Devkaran Nanjee Banking Co. 3 (B)  
Janata Sahakari Bank (H. O.)  
Muslim National Co-op. Bank (H. O.)  
New Citizen Bank of India 2 (B) (S,O)  
No. 1 Military Accounts Co-operative Bank (H.O.)  
Poona Contractors' Co-operative Bank (H.O.)  
Poona District Central Co-operative Bank 4(H. O.) (3B)  
Poona Co-op. Rubee Bank (H. O.)  
Poona Investor's Bank (R. O.)  
Poona Merchants' Co-op. Bank (H.O.)  
Poona Municipal Employees' Co-operative Bank (H. O.)  
Poona Postal Employees Co-operative Bank (H. O.)  
Presidency Industrial Bank (R. O)  
Punjab National Bank (2B)  
Punjab Co-op. Bank Ltd. (R. O.)  
Saraswat Co-operative Bank (B)  
State Bank of India (2B)  
United Commercial Bank (2B) (SB)

United Western Bank (B)  
 Union Bank of India (B)  
**Parali-Vaijanath (16,567)**  
 State Bank of Hyderabad (P. O.)

**Pulgaon (18,979)**  
 Bank of Nagpur (B)  
 Laxmi Bank (B)

**Purna (9,163)**  
 State Bank of Hyderabad (P. O.)

**Pusad (15,129)**  
 Laxmi Bank (B)  
 Punjab National Bank (P. O.)  
 Pusad Central Co-op. Bank (H. O.)  
 State Bank of India (B)

## R

**Rahata (6,338)**  
 Bombay State Co-operative Bank (B)

**Rahuri (9,833)**  
 Bombay State Co-operative Bank (B)

**Ramtek (9,861)**  
 Nagpur Central Co-op. Bank (B)

**Rander**  
 Rander People's Co-op. Bank (H.O.)

**Ratnagiri (27,082)**  
 Bank of Konkan (B)  
 Bank of Maharashtra (B)  
 Canara Industrial & Banking Syndicate (B)  
 Ratnagiri Urban Co-op. Bank (H. O.)  
 State Bank of India (B)

**Raver (11,245)**  
 East Khandesh Central Co-operative Bank (B)

**Risod**  
 Akola Central Co-op. Bank (B)

## S

**Sailu (12,819)**  
 Central Bank of India (S. B.)  
 State Bank of Hyderabad (P. O.)

**Sakri (3,632)**  
 Bombay State Co-operative Bank (B)

**Sangamner (16,756)**  
 Bombay State Co-operative Bank (B)  
 Nagar District Central Urban Co-operative Bank (B)  
 New Citizen Bank of India (B)

**Sangli (50,287)**  
 Bank of Maharashtra (B)  
 Bank of Poona (B)  
 Canara Industrial and Banking Syndicate (B)  
 Central Bank of India (P. O.)  
 Miraj State Bank (2B)  
 New Citizen Bank of India (B)  
 Punjab National Bank (B)  
 Ratnakar Bank (B)

Sangli Bank 3 (R. O.) (2B)  
 Sangli Urban Co-op. Bank (H. O.)  
 Satara (South) District Local Board Primary Teachers' Co-operative Society (H. O.)  
 South Satara District Central Co-operative Bank (H. O.)

**Sangameshwar (3,494)**  
 Ratnagiri Urban Co-op. Bank (B)

**Sangola (7,697)**  
 Sholapur District Co-op. Bank (B)

**Saoner (8,966)**  
 Nagpur Central Co-op. Bank (B)

**Saswad (6,354)**  
 Poona District Central Co-operative Bank (B)

**Satana (10,069)**  
 Nasik District Central Co-operative Bank (B)

**Satara (41,070)**  
 Bank of Aundh (R. O.)  
 Bank of Karad (B)  
 Satara (North) District Central Co-operative Bank (H. O.)

- Satara Swadeshi Commercial Bank (R. O.)  
 State Bank of India (B)  
 United Western Bank (R. O.)  
**Savda (11,709)**  
 East Khandesh Central Co-operative Bank (B)
- Sawantwadi (12,451)**  
 Bank of Konkan (B)  
 Belgaum Bank (B)  
 Bombay State Co-operative Bank (B)  
 Sawantwadi Urban Co-operative Bank (H.O.)
- Shahada (10,437)**  
 Bombay State Co-op. Bank (B)
- Shahapur (4,485)**  
 Kalyan Peoples' Co-operative Bank (B)
- Shegaon (18,655)**  
 Laxmi Bank (B)
- Shendurni (11,686)**  
 East Khandesh Central Co-operative Bank (B)
- Shevgaon (7,269)**  
 Bombay State Co-op. Bank (B)
- Shidhartha**  
 Sholapur District Central Co-op. Bank (B)
- Shinkheda (9,289)**  
 Bombay State Co-op. Bank (B)
- Shirala (6,046)**  
 South Satara District Central Co-op. Bank (B)
- Shiroda (5,373)**  
 Belgaum Bank (B)
- Shirpur (16,332)**  
 Bombay State Co-operative Bank (B)  
 Shirpur Merchants' Co-operative Bank (B)
- Shirur (6,567)**  
 Poona District Central Co-operative Bank (B)
- Shirval (4,587)**  
 Bhor State Bank (B)
- Sholapur (2,77,087)**  
 Bank, of India (B)  
 Bank of Maharashtra (2B)  
 Canara Bank (B)  
 Canara Industrial and Banking Syndicate (B)  
 Central Bank of India (B)  
 Devkaran Nanjee Banking Co. (B)  
 New Citizen Bank of India (B)  
 Punjab National Bank (B)  
 Sholapur District Central Co-op. Bank (H. O.)  
 Sholapur District Industrial Co-op. Bank (H. O.)  
 State Bank of India (B)  
 Union Bank of Bijapur and Sholapur (B)
- Shrigonda (8,909)**  
 Bombay State Co-op. Bank (B)
- Shrirampur (16,311)**  
 Bank of Maharashtra (B)  
 Bharat Industrial Bank (B)  
 Bombay State Co-operative Bank (B)  
 Nagar District Central Urban Co-op. Bank (B)  
 State Bank of India (B)
- Sinnar (13,063)**  
 Nasik District Central Co-operative Bank (B)  
 New Citizen Bank of India (B)
- T**
- Talegaon (9,749)**  
 Poona District Central Co-operative Bank (B)
- Tasgaon (12,915)**  
 South Satara District Central Co-op. Bank (B)
- Thana (50,155)**  
 Bank of Maharashtra (B)  
 Jodhpur Commercial Bank (B)

State Bank of India (B)  
**Tumsar (18,250)**  
 Laxmi Bank (B)  
 State Bank of India (P. O.)

## U

**Udgir (16,522)**  
 Bidar Central Co-operative Bank (B)  
 Saraswati Bank (B)  
 State Bank of Hyderabad (P. O.)

**Umerkhed (10,596)**

Laxmi Bank (B)

**Umbarkhede**

East Khandesh Central Co-operative Bank (B)

**Umhergaon (6,347)**

Umhergaon Peoples' Bank (R. O.)

**Umrer (19,185)**

Nagpur Central Co-op. Bank (B)

## V

**Vaijapur (10,364)**

State Bank of Hyderabad (P. O.)

**Vairag (5,266)**

Barsi Central Co-op. Bank (B)

**Vambori (7,34)**

Bombay State Co-op. Bank (B)  
 Nagar District Central Urban Co-op. Bank (B)

**Varangaon (8,152)**

East Khandesh Central Co-operative Bank (B)

**Varkhedi**

East Khandesh Central Co-operative Bank (B)

**Vaso (9,945)**

Vaso Co-operative Bank (H. O.)

**Vengurla (22,778)**

Bank of Konkan (B)  
 Belgaum Bank (B)  
 Canara Industrial and Banking  
 Syndicate (B)  
 Vengurla Co-operative Bank (H. O.)

**Vita (9,292)**

South Satara District Central Co-op.  
 Bank (B)  
 Vita Merchants' Co-op. Bank (H. O.)

## W

**Wadgaon (2,512)**

Poona District Central Cooperative Bank (B)

**Waduj (6,838)**

Satara (North) District Central Co-operative Bank (B)

**Wai (16,099)**

Satara (North) District Central Co-operative Bank (B)  
 Wai Urban Co-op. Bank (H. O.)

**Walchandnagar (5,640)**

Devkaran Nanjee Banking Co. (S. O.)

**Wardha (39,827)**

Bank of Nagpur (B)  
 Laxmi Bank (B)  
 Punjab National Bank (B)  
 State Bank of India (B)  
 Wardha Central Co-op. Bank (H. O.)

**Wani**

Bank of Nagpur (B)

**Warora (11,517)**

Bank of Nagpur (B)  
 State Bank of India (P. O.)  
 Warora Central Central Co-operative Bank (H. O.)

**Washim (18,763)**

Akola Central Co-op. Bank (B)  
 Laxmi Bank (B)

**Wun (14,672)**

Bank of Nagpur (B)  
 State Bank of India (B)  
 Yeotmal Central Co-op. Bank (B)

## Y

**Yawal (14,370)**

East Khandesh Central Co-operative Bank (B)

**Yeola (21,378)**

Bombay State Co-op. Bank (B)

Yeola Merchant Co-operative Bank  
Ld. (H. O.)**Yeotmal (35,980)**

Bank of Nagpur (B)

Laxmi Bank (B)

New Citizen Bank of India (B)

Punjab National Bank (B)

State Bank of India (B)

Yeotmal Central Co-op. Bank (H. O.)

# THE BHARAT INDUSTRIAL BANK

## LIMITED POONA CITY.

Established on :—14th April 1938.

Phone No. : 2046

Telegram : BHAIBANK

### C A P I T A L

Authorised	Rs. 15,43,810
Subscribed and Issued	Rs. 7,93,110
Paid up	Rs. 4,00,195
Reserve and Other Funds	Rs. 1,17,000
Working Capital Over	Rs. 65,00,000

### Board Of Directors

Shri K. P. Joshi (*Chairman*)Shri K. M. Mahajan (*Vice Chairman*)

Shri B. B. Walvekar

Shri R. B. Girme (Shrirampur)

Mrs Indumatibai R. Phadake

Shri R. P. Damodare (Baramati)

Shri N. N. Kshirsagar

Shri R. B. Salvekar

*Managing Director**Managing Director*

### Branches

Poona Cant. Phone No. 3646

Baramati

Phone No. 41

Shrirampur „ 28

Lonavla

„ 51

Khopoli (*Dist : Colaba*)Ojhar (*Dist : Nasik*)

### SAFE DEPOSIT VAULT

Lockers are available at Head Office at moderate rates.

## List of Branches of Banks in this Region and having offices outside the Region of Bombay State.

### A

- Alnawar (Mysore) (6,107)**  
Bank of Citizen
- Ankola (Mysore) (4,742)**  
Bank of Citizen (B)  
Canara Industrial and Banking Syndicate (B)
- Athani (Mysore) (17,089)**  
Belgaum Bank (B)  
Union Bank of Bijapur & Sholapur (B)

### B

- Bagalkot (Mysore) (32,288)**  
Canara Industrial & Banking Syndicate (B)  
Union Bank of Bijapur & Sholapur (B)
- Bailhongal (Mysore) 14,166**  
Belgaum Bank (B)  
Bank of Citizen (B)
- Balaghat (Madhya Prad.) 16,291**  
Laxmi Bank (B)
- Belgaum (Mysore) 1,02,705**  
Bank of Citizen 3 (R. O.) (2B)  
Bank of Karnatak (B)  
Bank of Maharashtra (B)  
Belgaum Bank 3 (R. O.) (2B)  
Belgaum District Central Co-operative Bank 3 (R. O.) (2B)  
Belgaum Maratha Urban Co-operative Bank (H. O.)  
Belgaum Muslim Urban Co-operative Bank (H. O.)  
Belgaum Pioneer Urban Co-operative Bank (H. O.)  
Canara Bank (B)  
Canara Industrial & Banking Syndicate (B)  
Central Bank of India (S. B.)

- New Citizen Bank of India (B)  
Sangli Bank (B)  
Saraswat Co-operative Bank (B)  
State Bank of India 2 (B) (S. P. O.)

- Betul (Madhya Pradesh) 21986**  
Laxmi Bank (B)
- Bijapur (Mysore) 65734**  
Bank of Citizen (B)  
Bijapur District Central Co-operative Bank (H. O.)  
Bijapur Shri Shidheswar Urban Co-operative (H. O.)  
Canara Industrial & Banking Syndicate (B)  
Corporation Bank (R. O.)  
Shri Guru Govind Specie Bank (R. O.)  
Shri Jadya Shankarling Bank (R. O.)  
State Bank of India (B)  
Union Bank of Bijapur & Sholapur (R. O.)

- Bilaspur (Madhya Pradesh) 39099**  
Laxmi Bank (B)
- Burhanpur**  
Laxmi Bank (B)

### C

- Calcutta (W. Bengal) 25,48,677**  
Laxmi Bank (B)
- Chindwara (27,652)**  
Laxmi Bank (B)
- Chikodi (Mysore) 13713**  
Belgaum Bank (B)  
Bank of Citizen (B)

### D

- Delhi (Delhi) Cant. 40950, Munc. 13,43,261**  
New Citizen Bank of India (S. O.)  
Laxmi Bank (B)

- Dhamtari** (Madhya Pradesh) 17161  
Laxmi Bank (B)
- Dharamgaon** (21, 186)  
Bank of Nagpur (B)
- Dharwar** (Mysore) 66571  
Bank of Citizen (B)  
Bank of Karnatak (B)  
Canara Bank (B)  
Canara Banking Corporation (B)  
Canara Industrial & Banking Syndicate (B)  
Karnatak Central Co-op. Bank (H. O.)  
Mahalaxmi Urban Co-op. Bank (H.O.)  
Raddi Urban Co-op. Bank (B)  
Shamrao Vithal Co-op. Bank (B)  
State Bank of India (B)
- Dongargarh** (Madhya Pradesh) 12,196  
Laxmi Bank (B)
- Durg** (Madhya Pradesh)  
Allahabad Bank (P. O.)  
Bank of Nagpur (B)  
Durg Central Co-op. Bank (H. O.)  
Laxmi Bank (B)  
State Bank of India (B)
- G**
- Gadag** (Mysore) 65509  
Bank of Citizen (B)  
Bank of Karnatak (B)  
Bettigri Urban Co-op. Bank (H. O.)  
Canara Industrial & Banking Syndicate (B)  
Central Bank of India (B)  
Gadag Urban Co-op. Bank (H.O.)  
Karnatak Central Co-op. Bank (B)  
Punjab National Bank (B)  
State Bank of India (B)
- Gokak** (Mysore) 17694  
Belgaum Bank (B)
- Gokak Falls** (Mysore)  
Belgaum Bank (B)
- Gulbarga** (Mysore) 77,189  
Canara Industrial & Banking Syndicate (B)
- Central Bank of India (S. B.)  
Saraswati Bank (R. O.)  
State Bank of Hyderabad (R. O.)
- H**
- Hosur** (Mysore State)  
Belgaum Bank (B)
- Hubli** (Mysore State)  
Bank of Citizen (B)  
Bank of Karnatak 2 (R. O.)  
Bank of Maharashtra (B)  
Canara Bank (B)  
Canara Industrial & Banking Syndicate (B)  
Canara Banking Corporation (B)  
Central Bank of India (S. B.)  
Hubli City Bank (R. O.)  
Hubli Muslim Co-op. Bank (H. O.)  
Hubli Urban Co-op. Bank (H. O.)  
Karnatak Central Co-op. Bank (B)  
State Bank of India (B)
- Hyderabad** (Andhra) Cant. 57,318  
Municip. 8,03,038  
Bank of Baroda (B)  
Bank of India (B)  
Bank of Maharashtra (B)  
Canara Bank (B)  
Canara Banking Corporation (B)  
Canara Industrial & Banking Syndicate (B)  
Central Bank of India (B)  
Punjab National Bank (B)  
Saraswati Bank (B)  
State Bank of Hyderabad 4 (R. O.)  
State Bank of India (B)  
Union Bank of India (B)
- Ilkal** (Mysore)  
Union Bank of Bijapur & Sholapur (B)
- J**
- Jubbulpore** (M. P.)  
(Cant. 34,225 Munc. 2,22,7737)  
Allahabad Bank 2 (B)  
Central Bank of India (B)  
Jabalpur Central Co-op. Bank

Laxmi Bank (B)  
 Madhya Pradesh Central Co-operative  
 Bank (B)  
 Punjab National Bank 2 (B)  
 State Bank of India (B)

**K**

**Karwar (Mysore)** 19,764  
 Bank of Citizen (B)  
 Canara Bank (B)  
 Canara Industrial & Banking Syndi-  
 cate (B)  
 Karwar Urban Co-op. (H. O.)  
 Shamrao Vithal Co-op. Bank (B)  
 State Bank of India (B)  
**Khanapur (Mysore)** 17487  
 Bank of Citizen (B)  
 Belgaum District Central Co-opera-  
 tive Bank (B)  
 Khanapur Co-op. Urban Bank (H.O.)  
**Khandwa (Madhya Pradesh)** 51,940  
 Laxmi Bank (B)

**Kumtha (Mysore)** 14890

Bank of Citizen (B)  
 Canara Industrial & Bank Syndicate (B)  
 Kumtha Urban Co-op. Bank (H. O.)  
 North Kanara Central Co-operative  
 Bank (B)

**N**

**Nandgad (Mysore)** (5,356)

Bank of Citizen (B)  
 Belgaum Bank (B)

**Nargund (Mysore)** (9573)

Belgaum Bank (B)

**Nipani (Mysore)** (24,325)

Bank of Citizen (B)  
 Belgaum Bank (B)  
 Belgaum District Central Co-op.  
 Bank (B)  
 Canara Industrial and Banking Syndi-  
 cate (B)  
 Napani Shriram Co-operative Bank  
 (H. O.)

State Bank of India (P. O.)

**R**

**Rabkavi (Mysore)** (9136)

Canara Industrial & Banking Syndicate  
 (B)

Sangli Bank (B)

**Raigarh (Madhya Pradesh)** (29640)

Laxmi Bank (B)

**Raipur (Madhya Pradesh)** (89,804)

Laxmi Bank (B)

**Rajnanagon Mydhya Pradesh)** (23,300)

Laxmi Bank (B)

Bank of Nagpur (B)

**Durg Central Co-operative Bank (B)**

Laxmi Bank (B)

Madhya Pradesh Co-op. Bank (B)

State Bank of India (B)

**Ramdurg (Mysore)** (13227)

Belgaum Bank (B)

Belgaum Industrial Co-opt. Bank (B)

Ramdurg Bank (B)

**S**

**Sankeshwar (Mysore)** 13,186

Belgaum Bank 2 O (B)

Bank of Citizen (B)

**Shirhatti (Mysore)** 6569

Songli Bank (B)

**Sirsi (Mysore)** 13226

Bank of Citizen (B)

Canara Bank (B)

Canara Industrial and Banking Syndi-  
 cate (B)

North Kanara Central Co-op. Bank  
 (H. O.)

Sirsi Urban Co-op. Bank (H. O.)

**Sundatti (Mysore)** 10,030

Belgaum Bank (B)

**Terdac (1038) (Mysore)**

Sangli Bank (B)

**Tikota (Mysore)** 5,686

**Ugar khurd (Mysore)** 3120

Sangli Bank (B)

Ganesh Bank of Kurundwad (B)



# THE LAXMI BANK Ltd.

Head Office :—AKOLA. (Bombay State)

Established 1938.

*Chairman* :—Diwan Bahadur Seth Gopaldas Mohta,  
Banker, Landlord, Mills & Mines Owner.

## Branches in Bombay State.

- |                  |               |                 |
|------------------|---------------|-----------------|
| 1. Akola         | 2. Akot       | 3. Amravati     |
| 4. Achalpur      | 5. Bhandara   | 6. Chanda       |
| 7. Dhamangaon    | 8. Gondia     | 9. Hinganghat   |
| 10. Karanja      | 11. Khamgaon  | 12. Nagpur City |
| 13. Nagpur Bardi | 14. Pulgaon   | 15. Pusad       |
| 16. Shegaon      | 17. Tumsar    | 18. Umarkhed    |
| 19. Wardha       | 20. Washim    | 21. Yeotmal     |
| 22. Bombay-Fort  | 23. Bombay    | 24. Bhusawal    |
| 25. Jalgaon      | Zaveri Bazar. |                 |

## Branches in Madhya Pradesh

- |                  |               |             |
|------------------|---------------|-------------|
| 1. Burhanpur     | 2. Betul      | 3. Bilaspur |
| 4. Balaghat      | 5. Chhindwara | 6. Dhamtari |
| 7. Durg          | 8. Dongargarh | 9. Jabalpur |
| 10. Khandwa      | 11. Raigarh   | 12. Raipur  |
| 13. Rajnandgaon. |               |             |

## Branches in Other States

- |             |           |
|-------------|-----------|
| 1. Calcutta | 2. Delhi. |
|-------------|-----------|

P. N. Vasudeva  
General Manager

## दि बँक ऑफ सिटिझन्स लि. बेळगांव

फो. नं. ११३ ]

— स्थापना १९३७ —

[ तारेचा पत्ता:—

हे. ऑ. १५१४, मारुतीगल्ली, बेळगांव CITIZENSBANK

शाखा:-टिळकवाडी, ● ( परगांव ) बेळगांव जिल्हा:-खानापूर, नंदगड, चिकोडी, निपाणी,

बैलहोंगल, संतेश्वर, ● धारवाड जिल्हा:-धारवाड, हुबळी, गदग, अळणावर,

● विजापूर जिल्हा:-विजापूर ● कारवार जिल्हा:-कारवार, अंकोला, सिरसी, कुमठा, हलियाळ.

— बोर्डे ऑफ डायरेक्टर्स:—

जी. डी. सराफ, बँकर, टिळकवाडी बेळगांव. चेवरमन्

मि. आदम ए. बंदुक्वाला; कॅप बेळगांव  
प्रोप्रायटर गनशॉप,

श्री. काशीनाथ यशवंत देशपांडे;

कापडाचे व्यापारी, बेळगांव

श्री. मल्लाप्पा शिवप्पा होसमनी,

फॉरेस्ट कॉन्ट्रॅक्टर, खानापूर,

श्री. चंद्रकांत गणेश हेरेकर,

बँकर, शहापूर

श्री. प्रभप्पा बसप्पा उगारगोळ

B.A., LL.B. वकील-बैलहोंगल

श्री. यशवंत गुंडप्पा नागांवकर, पार्टनर

डी. सी. शहा, नागांवकर अॅण्ड कं. निपाणी.

श्री. चंद्रकांत लिंगप्पा पट्टणशेट्टी B. A.

व्यापारी-रविवारपेठ, बेळगांव.

श्री. बसवण्यप्पा विरप्पा संबरागी

लॅंडलॉर्ड, खानापूर.

Factory fitted with up-to-date heavy duty wood working  
machinery & Modern Seasoning Kiln.

## N. S. Rajurkar & Sons, Poona 5.

Factory Phone 3536.

Show Room Phone 3888.

Specialists In

Machine made DOORS, WINDOWS & timber flooring

For Quality Furniture in Steel & Wood

once Visit our SHOWROOMS at,

Jangali Maharaj Road, Opposite Sambhaji Park, Poona 4.

# DENA INSURANCE

DEVKARAN NANJEE INSURANCE CO. LTD.

FOUNDER CHAIRMAN

**SHRI PRANLAL DEVKARAN NANJEE**

SUPPORT SWADESHI

"The key-note of our Swaraj is  
in placing all our Insurance  
Business with our Indian Compa-  
nies....."

—Mahatma Gandhi

## FIRE • MOTOR • ACCIDENT

॥ श्री ॥

दि बृहन्महाराष्ट्र शुगर सिंडिकेट लिमिटेड पुणे २.

मी अविवेकाची काजळी। फेड्रनि विवेकदीप उजळी।  
तैं योगिया पाढे दिवाळी। निरंतर ॥

— श्री ज्ञानेश्वरी

नवा हंगाम दसऱ्याच्या शुभ मुहूर्तावर चालू झाला.  
डिस्टिलरी चालू आहे.

मुदतीच्या ठेवी स्वीकारल्या जातात.

आमचे भागीदार, ठेवीदार व हितचिंतक यांना नूतन वर्ष सुखाचे समृद्धीचे जावो!

के. व्यं. चाफेकर

B.E., A.M.I.E. मॅनेजर

दि. व. एन्. सी. लिमये,

B.A.LL.B., C.B.E. अध्यक्ष

# THE RAM AGENCY : POONA

· 252 / A Narayan, Tilak Road, Poona 2.

DODGE Cars & Trucks (Diesel & Petrol)

WILLYS JEEPS

LAMBRETTA Scooters, Scooterettes and 3-Wheelers

STANDARD Batteries

Motor Parts and Accessories

TYRES & TUBES of all Makes & Sizes

**SERVICING & REPAIRS A SPECIALITY**

Tel. No. 2775

Grams "RAMSEVA"

## The British India General Insurance Company, Limited.

(INCORPORATED IN INDIA)  
1919.

**At Your Service**

FOR ALL YOUR INSURANCE REQUIREMENTS

*Head Office :*  
Mehta House,  
Apollo Street, Bombay 1.

*Branch Office :*  
Shembekar's Building,  
185 / 3 & 4 Budhwar Peth,  
Laxmi Road, Poona 2.

We manufacture Swastik make Electric cables,  
House Pipes, Gum Boots, Industrial Gloves and  
other industrial requirements in Rubber.....



### HOSPITAL RUBBER REQUISITES

Because of its modern manufacturing process, "Swastik"—The hall mark in rubber industry assures quality, utility and dependability in Hospital Requisites. Swastik Pure Rubber Sheet- ing, Mackintosh, Hot Water Bottles and Air Pillows are popular in Hospitals and Homes as well. In addition, Swastik Surgical Gloves are getting popular all over the surgical sphere. Make sure of 'Swastik' brand, before you buy your rubber requisites.

**Swastik**

**RUBBER PRODUCTS LTD.,  
Kirkee, Poona-3**

# THE CANARA INDUSTRIAL & BANKING SYNDICATE LLD.

Established 1925

Head Office : "Mukund Nivas" UDIPI, South India.

## CAPITAL

Authorised	...	...	Rs. 56,00,000/-
Issued	...	...	Rs. 32,23,787/-
Subscribed	...	...	Rs. 32,10,987/-
• Paid-up	...	...	Rs. 28,34,429/-
Reserve Funds	...	...	Rs. 18,00,000/-

As on 30th September, 1957

DEPOSITS EXCEED Rs. 9.6 CRORES

TOTAL RESOURCES EXCEED Rs. 11.8 CRORES

*Our Branches in Bombay State :*

Bombay, Kolhapur, Ratnagiri, Malwan, Vengurla, Sholapur,  
Karad and Sangli.

*Our Branches in other States :*

Mysore: 64, Andhra: 15, Kerala: 13, and Madras: 2.

ALL TYPES OF BANKING BUSINESS TRANSACTED

पुणे म्युनिसिपल कॉर्पोरेशन सर्व्हटस को-ऑपरेटिव्ह अर्बन बँक लि. पुणे.

७३ बुधवार पेठ, पुणे शहर.

स्थापना १९१४.

अधिकृत शेअर भांडवल रु. २,००,०००

वसूल भांडवल रु. १,४८,१००

रिझर्व व इतर फंड्स रु. ६०,६९६

खेळते भांडवल रु. ११,००,०००

मा. सल्लागार मंडळ :—(१) मा. सि. धो. आबनावे, अध्यक्ष. (२) मा. पुं. ना. स्वार,  
उपाध्यक्ष. (३) मा. स. ति. स्वामी. (४) मा. रा. द. भट. (५) मा. वि. द. नवले.

मा. कार्यकारी मंडळ :—(१) मा. ना. धों. भोकरे, कार्यध्यक्ष. (२) मा. पां. धो. सोनवणे,  
उपकार्यध्यक्ष. (३) मा. रा. ता. कांबळे. (४) मा. कृ. गो. कुंभार. (५) मा. ब. रा. कोतवाल.  
(६) मा. म. मा. खोले. (७) मा. द. ना. कुंभार. (८) मा. कृ. द. धारमळकर. (९) मा.  
दि. म. जाधव. (१०) मा. आ. ब. टण्टू. (११) मा. भि. वि. पाटील.

या बँकेत सभासद काढकसरफंडाची योजना असून त्यामुळे रु. ५,३५,००० इतकी रक्कम  
या खाताजमा आहे.

बँकेत सभासद व बिगर सभासद यांच्या सेव्हिंज, चांदे, हत्तेबंद ठेवी व कायम ठेवी  
स्वीकारल्या जातात. बँकिंगचे सर्व व्यवहार केले जातात.

नारायण कृष्ण कुलकर्णी, (कार्यवाह)

दक्षिण सातारा जिल्हा मध्यवर्ती सहकारी बँक लि., सांगली.

स्थापना १९२७

शाखा :—१. जत, २. मिरज, ३. तासगांव, ४. शिराळा, ५. विटें, ६. आटपाडी,  
७. इस्लामपूर, ८. मार्केटयार्ड ( सांगली ).

अधिकृत भांडवल रु. १० लाख वसूल भांडवल रु. ४,४५,५२०

रिझर्व व इतर फंड रु. २,४१,३४७ ठेवी रु. ४१,९५,०००

खेळतें भांडवल रु. ६३,४२,०००

\* सहकारी संस्थांना शेतीचे व्यवहारासाठी कर्जे दिलीं जातात.

\* बँकिंगचे सर्व व्यवहार केले जातात.

\* संस्थेची स्वतःची भव्य इमारत लॉकरच पूर्ण होईल.

पी. बी. टाकवेकर,  
मॅनेजर.

गुलाबराव आर. पाटील,  
चेअरमन.

Give us the pleasure of serving you

## POONA AUTOMOBILES

Importers & Wholesalers

177 / 78 Laxmi Road, Poona 2.

PHONE 2975

OFFICE : BOMBAY.

*BANK WITH*

### The Saraswat Co-op. Bank Ltd.

Saraswat Bank House, Girgaum, Bombay 4.

*For Service and Security.*

*Branches at :* Fort, Dadar, Worli, Mahim, Belgaum and Poona.

*Ladies Branch :* Saraswat Bank House, Girgaum, Bombay 4.

फोन नं. ५३]

[स्थापना १९३५

## अर्बन को-ऑपरेटिव्ह बँक लिमिटेड, सांगली.

हेड ऑफिस:- सांगली, जिल्हा द. सातारा,

शाखा:- माधवनगर, द. सातारा.

अधिकृत भांडवल रु. ५,००,०००

वसूल झालेले भांडवल रु. १,७८,०३०

रिझर्व्ह फंड रु. १,२९,२५०

इतर फंड्स रु. १,६५,१७७

ठेवी रु. ३४,०१,६८७

एकूण खेळते भांडवल रु. ४१,४५,७९४

ता. ३०-६-१९५७ अखेरचा नफा रु. ४०,०९०

—: व्याजाचे दर :-

चालू खाते द. द. शें. रु. ०=६२

सेव्हिंग खाते द. द. शें. रु. २=००

मुदत ठेव १ वर्ष ते ५ वर्षे व्याज द. द. शें. रु. ३=५० ते रु. ४=२५

अल्प भाव्यांत सेफ डिपॉझिट लॉकर्स हेड ऑफिसमध्ये मिळतील. ट्रेझरीकडील पेन्शन व इतर बिले, चेकस्, हुंब्या, रेल्वे रशीदीची वसुलीची कामे करतात.

वा. वि. वाटवे B. A. LL. B.  
चेअरमन.

ल. य. लागू B. A. LL. B.  
मॅनेजर

Phone - 3695

Cables - "UNITED"

GIVE US THE PLEASURE OF SERVING YOU!

### THE UNITED AUTOMOBILES

(KARACHIWALLA)

2326 East Street,  
Opp. Bank of India Ltd.  
POONA CAMP.

Laxmi Road,  
Near Lakdipool Naka,  
POONA CITY.

### EVERYTHING IN AUTOMOBILES

SPARES FOR ALL MAKES OF MOTOR-CYCLES AND CARS



# THE UNITED COMMERCIAL BANK LIMITED

(Registered in 1943)

Head Office : **Royal Exchange Place, CALCUTTA.**

**Authorised Capital** : Rs. 8,00,00,000

**Issued and subscribed Capital** : Rs. 4,00,00,000

**Paid-up Capital** : Rs. 2,00,00,000

**Reserve Fund** : Rs. 1,15,00,000

## *BRANCHES :*

**IN INDIA** ... In all cities and towns of commercial and industrial importance.

**IN PAKISTAN** ... Chittagong, Karachi.

**IN BURMA** ... Rangoon, Moulmein, Akyab, Mandalay, Bassein.

**IN MALAYA** ... Singapore, Penang, Kuala Lumpur.

**IN UNITED  
KINGDOM** ... London.

**ALSO AT** ... Hongkong.

**AGENTS** ... Throughout the World-Europe, America, Asia, Australia.

**ALL TYPES OF BANKING BUSINESS TRANSACTED.**

**G. D. BIRLA**  
*Chairman.*

**S. T. SADASIVAN**  
*General Manager.*

# THE UNITED COMMERCIAL BANK LIMITED

(Registered in 1943)

Head Office : **Royal Exchange Place, CALCUTTA.**

**Authorised Capital** : Rs. 8,00,00,000

**Issued and subscribed Capital** : Rs. 4,00,00,000

**Paid-up Capital** : Rs. 2,00,00,000

**Reserve Fund** : Rs. 1,15,00,000

## *BRANCHES :*

**IN INDIA** ... In all cities and towns of commercial and industrial importance.

**IN PAKISTAN** ... Chittagong, Karachi.

**IN BURMA** ... Rangoon, Moulmein, Akyab, Mandalay, Bassein.

**IN MALAYA** ... Singapore, Penang, Kuala Lumpur.

**IN UNITED  
KINGDOM** ... London.

**ALSO AT** ... Hongkong.

**AGENTS** ... Throughout the World-Europe, America, Asia, Australia.

**ALL TYPES OF BANKING BUSINESS TRANSACTED.**

**G. D. BIRLA**  
*Chairman.*

**S. T. SADASIVAN**  
*General Manager.*

Sputnik II is revolving in the outer space.  
Tomorrow a rocket will reach the moon in 24 hrs.

that is where a series of successful  
plans land a nation, yes,  
if it wants.

We are a peace loving nation.  
We do not want to launch  
either a 'sputnik' or an I.C.B.M.  
but certainly we want to achieve  
the targets in the second five  
year plan.

Save in a Co-operative Bank ; help  
achieve the agricultural Target.

# THE POONA CENTRAL CO-OPERATIVE BANK LTD.

( Established 1917 )

Paid up Share Capital	....	....	15.62 lakhs.
Deposits	....	....	1.94 crores
Working Capital	....	....	2.47 crores

Telegrams—CENCOBANK.

Telephone—2483.

W. G. Altekar,  
Managing Director