

PRACTICAL RAILWAY OPERATING

PRACTICAL RAILWAY OPERATING

BY

T. BERNARD HARE

*District Superintendent, London and North Eastern Railway,
Middlesbrough*

Formerly Lecturer in Transport Subjects, Leeds College of Commerce

Price 5s. net

PUBLISHED BY

MODERN TRANSPORT PUBLISHING CO., LIMITED

NORMAN HOUSE, 105/109, STRAND, LONDON, W.C.1

CONTENTS

	PAGE
PREFACE	vii
CHAPTER I. INTRODUCTION	1
II. LINE OCCUPATION	6
III. TERMINALS—PASSENGER STATION	28
IV. do. PASSENGER STATION STAFF	39
V. do. GOODS SHEDS	46
VI. MARSHALLING YARDS	57
VII. PASSENGER TRAIN WORKING	71
VIII. FREIGHT TRAIN WORKING	87
IX. FREIGHT TRAIN SERVICES	98
X. LIGHT SHUNTING ENGINES	109
XI. MINERAL TRAFFIC FOR SHIPMENT	119
XII. POOLING OF PRIVATE WAGONS	129
XIII. TRAIN CONTROLS	136
XIV. STATISTICS	142
XV. CONCLUSION: ORGANIZATION AND EDUCATION	151
INDEX	159

PREFACE

THIS book is intended to supplement the discussion contained in, and to supply the illustrations—both verbal and otherwise—which, for reasons explained in the preface, were omitted from, *British Railway Operation*. Whilst, therefore, it may be necessary to introduce particular cases by a general consideration, it is not proposed to encroach upon the ground already covered by the former work, it being assumed that, so far as may be necessary, the reader is familiar with the principles set out therein. For convenience the same general order will be followed.

In a book of this length one cannot hope to consider all the principal operating problems which are likely to arise, or which should be searched for; nor is it suggested that the method used in any particular case is necessarily the best one for that type of problem under all circumstances. What the writer will endeavour to do is to discuss problems that are typical of the different sections of railway operating, using the method which he has found to be most generally useful in each case.

As on the previous occasion, I must acknowledge my indebtedness to a large number of railway colleagues of all ranks and grades who have, from time to time and in many different ways, helped me to the conclusions which follow. I would especially like to acknowledge my indebtedness to my fellow members of a class, organized on tutorial lines, which was conducted jointly by the Hull University College and the Hull (L.N.E.R.) Railway Lecture and Debating

Society, and of which I had the privilege of acting as chairman. This class, consisting of twelve railwaymen of different grades under the leadership of the head of the department of mathematics of the Hull University College, considered the value of the three-aspect signalling from the operating point of view.* This necessitated a preliminary investigation of the principles underlying present-day signalling, and I must gratefully acknowledge the assistance its discussions gave in clarifying and confirming many of the views expressed in the chapter dealing with line capacity.

*Readers who are interested will doubtless be able to obtain copies of the report of this group on application to the University College, Hull.

INDEX

INDEX

	PAGE
Alterations to freight train services	99
Analysis of freight train delays	93-97
Analysis of results shown by ton-mile statistics ...	143-150
Bay platforms	36
Block Sections—Effect when unequal	7
Block signalling—Effect on line capacity	7, 9, 13
Capacity—Goods shed	46-56
" Line	6, 27
" Passenger station	37
Carriage working	74-6, 84-6
Cartage arrangements	49-56
Census of trains	8
Costs—Goods shed	46, 54-6
" Marshalling yard	58-63
" Light shunting engines	110, 111
" Working—Effect on—of staging	2
Colours—Use of on diagrams	21, 34, 139
Control—Freight train	136-141
Co-operation with Traders	106, 119, 126, 128
Debating Societies—Railway	154
Definitions—	
Line capacity	6
" occupation	6
Delays—Reaction of train	23
Diagrams—Scales for	21
" Value of line occupation	19
" Use of in Control	136-141
Diagrams—	
Block sections	12
Control	138
Effect of speed on line capacity	15
Effect of unequal headway distance	17
Engine working	78, 82
Goods shed	47
Introduction of light shunting engines	115
Line capacity	8, 9, 11
" occupation—Typical example	22
Passenger station—"K"	31
" " staff	40
" " working	32, 40
Shipment of mineral traffic	120
Trip diagram—Passenger services	78, 82

	PAGE
Education	4, 153-6
Engine sheds—Effect of location on line capacity	22
Engines—Effect of design on line capacity	87-89
" Light shunting	109-118
Engine working	73, 86
Examples—	
Analysis of freight train delays	91-96
Control diagram	137-139
Goods sheds	48-56
Hump marshalling yards	63-70
Introduction of light shunting engines	114-118
Line occupation	19-27
Passenger station staffing	39-45
" " working	31-38
Pooling of private wagons	130-135
Revised passenger train services	71-86
Revision of freight train services	99-108
Shipment of mineral traffic	121-128
Use of ton-mile statistics	142-150
Freight train control	136-141
" " delays—Analysis of	90-97
" " services	98-108
" " working	87-97
Goods sheds	46-56
" stations—Shunting work at	112
Gradients at hump marshalling yards	67
Gravitation yards—Avoidance of non-effective time at	65
Guards' working	75-7, 85-6
Headway	13, 14, 16-18, 24-26
Institute of Transport	155
Interval passenger service	71-86
Island platforms	37
Light shunting engines	109-118
Line capacity	6-27
" " Effect on of block signalling rules	7
" " " " terminal accommodation	28
Line occupation	6-27
" " Approximate standard	7
" " London Underground railways	8
" " Value of diagrams	19
Lines duplicate—Effect of on capacity	26
Locomotives—Effect of design on line capacity	87-89
London Underground railways	8, 28
Marshalling yards	57-70
" " Employment of light shunting engines in	111

	PAGE
Marshalling yards—Gravitation—Avoidance of non-effective time at	65
" " Hump—Daily working sheet	64
" " " —Summary working sheet	65
" " Large—Suitability for British conditions	63
" " Layout of hump	66-69
" " Rate of shunting at	58-61
" " Statistics	62, 63-70
Mineral traffic for shipment	119-128
Occupation—Line	6-27
" Platform	19
Organisation	152-153
Passenger stations	28-38
" " diagrams	30, 32
" " Effect of extension of	29
" " Platform occupation	29
" " Staff	39-45
Passenger train working	71-86
Platform occupation	29
Platforms—Through v. Bay	36
Pooling of private wagons	129-135
Private wagon usage—Effect on of regulation systems	121-128
" wagons—Pooling of	129-135
Railway Debating Societies	154
Regulation systems for mineral traffic	119-128
"Research"	155
Revision of freight train services	98-108
" passenger train services	77
Rolling stock, Freight—Maximum speeds of	24
Scales for line occupation diagrams	21
Sentinel shunting engines	109-118
Services—Freight train	98-108
" Passenger train	71-86
Shunting engines, light	109-118
Shipment of mineral traffic	119-128
Shunting—Rate of at large marshalling yard	57-61
Signalling, Block—Effect on line capacity	7, 12, 13
Speeds, Train—Effect of on line capacity	6, 9-12, 14-16, 87-90
Speeds of freight rolling-stock	24
Stabling of light shunting engines	117
Staff—Goods shed	49-56
" Passenger station	39-45
Statements—	
Analysis of freight train delays	93
" " town delivery traffic	53

Statements (<i>continued</i>)—	PAGE
Carriage working	74, 75
Engine working	73-4, 84-5
Guards' working	75-6
Hump marshalling yard daily wagon sheets	64
Hump marshalling yard summary wagon sheets	65
Line occupation	8-10
Passenger train services	72-77
Usage of mineral wagons	130, 133, 134
Wagon miles per engine hour	142, 143, 144-6, 147, 148
Wagons dealt with at "C" marshalling yard	100
Station Master—Duties of	42
Stations—Goods	46-56
" Passenger	28-38
Statistics	4, 142-150
" Marshalling yard	62, 63, 70
Tables—	
Analysis of freight train delays	93
" " town delivery traffic	53
Carriage working	74-5
Engine working	73-4, 84
Guards' working	75-6
Hump marshalling yard daily working sheet	64
" " " summary working sheet	65
Line occupation	8-10
Passenger train services	72-82
Usage of mineral wagons	130, 133-134
Wagon miles per engine hour	142, 143, 144-6, 147-8
Wagons dealt with at "C" marshalling yard	100
Terminal costs	2
Terminals	28-56
Ton-mile statistics	142-150
Train Control—Freight	136-141
Train delays—Analysis of	90-97
" " Reaction of	23
Trains—Census of	8
Train Services—Freight	98-108
Train working—Freight	87-97
" " Passenger	71-86
" " Freight—Supervision of by Control dia-gram	140-1
" " Freight—Supervision of by statistics	142-150
Wagon miles per engine-hour statistics	142-150
Wagons—Pooling of private	129-135
Wagon user—Effect on of train and marshalling arrange-ments	58
" usage—Effect on of regulation systems	121-128
Wayside stations—Shunting work at	112
Yards—Marshalling	57-70

INDEX TO ADVERTISEMENTS.

	PAGE
"Modern Transport"	i, viii
The Westinghouse Brake and Saxby Signal Co., Ltd. ...	ii to v
Johnson and Phillips, Ltd.	vi
The Railway Signal Co., Ltd.	vii

MADE AND PRINTED IN GREAT BRITAIN
AT GAINSBOROUGH PRESS, ST. ALBANS
BY FISHER, KNIGHT AND CO., LTD.

AN URGENT QUESTION

SHOULD THE STATE ACQUIRE THE TRANSPORT SERVICES ?

THE ANSWER IS TO BE FOUND IN

NATIONALISATION of TRANSPORT

— An Impartial Review —

With a Foreword by LORD STAMP of SHORTLANDS, G.C.B., G.B.E.

Price 1/- net, post free 1/1

"Sub-divided into ten chapters, its 75 pages comprise a skilful examination of such matters as freedom of choice, a criticism of the railways, a review of efficiency, and probable advantages and repercussions. The final chapter gives the conclusions to be drawn from this impartial examination of the facts, showing clearly that the survey has been carried out by a person or persons eminently suited for an extremely difficult task."—*World's Carriers*.

"So much is being said nowadays about the nationalisation of public utility services, often with only the vaguest idea of all the complicated issues which are involved, that this little brochure . . . is very welcome as a fair and carefully balanced statement of the pros and cons of an exceedingly difficult problem."—*Dock and Harbour Authority*.

"This series of articles constitutes a careful survey of an important subject, and should be welcomed in brochure form as a handy little work of reference even to those who do not necessarily agree with the conclusions."—*Railway Gazette*.

"For over 100 years the subject of transport nationalisation has cropped up at intervals in Parliament and the Press. It has created a literature of its own. As Lord Stamp says in a 'Foreword', this volume will attract interest and afford enlightenment on a highly important and controversial subject. Whilst concise in its treatment, the publication covers a wide field."—*Chamber of Commerce Journal*.

*A list of Technical Works on all matters
connected with Transport may be obtained from*

THE BOOK DEPARTMENT

MODERN TRANSPORT PUBLISHING CO., LTD.

Norman House, 105/109 Strand, London, W.C.2

Telephone: Temple Bar 6371 (two lines) Telegrams: Transpubco, Rand, Lond.



Railway

There is a

Westinghouse

System of

SIGNALLING

suitable for every situation, and conforming to the latest requirements, ranging through

- Mechanical
- Double Wire
- Electro-mechanical
- Hand Generator
- All-Electric
- Electro-pneumatic

to the latest
form of control by

- Route Relay Interlocking



Westinghouse
Brake & Signal Co. Ltd.

Signalling



Westinghouse Apparatus

includes the most modern appliances developed in anticipation of railway requirements, and embodies the unequalled experience and research of the Westinghouse companies covering the whole world.

Westinghouse Signal Apparatus is built to recognised standard specifications, and has achieved a reputation for durability and reliability which is acknowledged wherever there are railways.

82 York Way, King's Cross
London, N.1
Works - - Chippenham, Wilts





Railway

There is a

Westinghouse
System of

BRAKING

suitable for all conditions of service and every kind of rolling stock now in service

Westinghouse Brake design has kept pace with, and even anticipated the development of rolling stock since the early days of railways. The results of this long period of service and practical experience are embodied in all the latest Westinghouse apparatus, which is developed to the highest standards of reliability, efficiency, and safety.



Westinghouse
Brake & Signal Co. Ltd.

Braking



Westinghouse

Brake Equipment

includes :

AIR BRAKES

- High-speed Equipment with Retardation Control.
- Electro-pneumatic, with Self-lapping Control for intensive suburban services.
- Automatic and Straight Air.
- 6 E.T. for all functions required in modern steam locomotives.
- Lu Automatic Freight Brake.
- 7 E.L. for electric locomotives.

VACUUM BRAKES

- Quick Service Brake with Q.S.A. Valve.
- "Prestall" steel cylinders.

DIESEL LOCOMOTIVE AND RAIL
CAR BRAKES

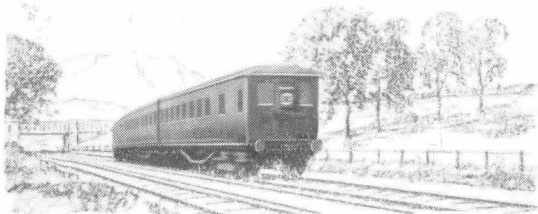
SLACK ADJUSTERS

LIGHTWEIGHT STEEL
CONSTRUCTION

82 York Way, King's Cross
London, N.1

Works - Chippenham, Wilts





LIVE LINES

The very reliability of electrified lines tends to make one forget the years of research and painstaking craftsmanship that made such comfortable travel possible. As pioneers in

RAILWAY ELECTRIFICATION

J. & P. justly claim that their experience both in the laboratory and on the track, places them without question in a position to advise and collaborate on the greater use of electricity for railway traction and signalling.

J. & P. "C.M.A." CABLES SWITCHGEAR TRANSFORMERS

are in use on most of the important Railway systems throughout the Empire.

J. & P. were responsible for the electrification of the suburban section of the Southern Railway

JOHNSON & PHILLIPS LTD.
CHARLTON LONDON S.E.7

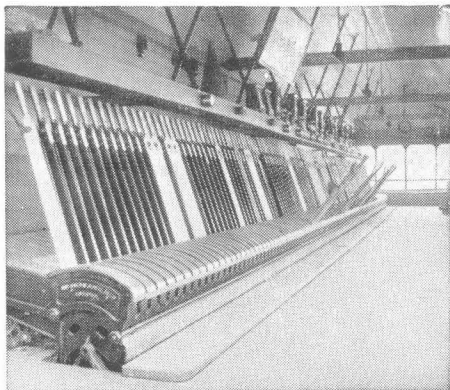
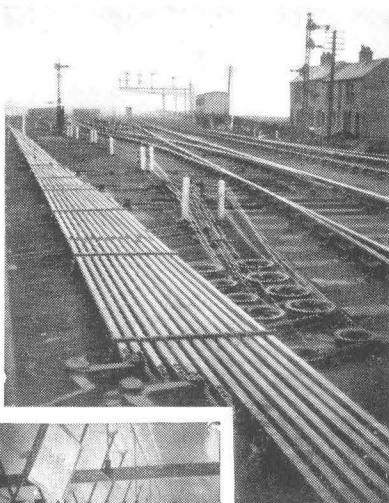
EST.



1875

THE
RAILWAY SIGNAL CO. LTD.
FAZAKERLEY, LIVERPOOL 9

Run of Point and Signal connections from Pontop Crossing Signal Cabin, Tyne Dock, L.N.E.R., one of three installations in this area converted from Electro-pneumatic to Mechanical Working.



Catchhandle Interlocking frame, installed at Sandhills, Liverpool, L.M.S.R. under resignalling contract carried out by R.S. Co. Ltd.

R.S.Co. PATENT CHANNEL RODDING
R.S.Co. PATENT ROLLER TRESTLES

TELEPHONE :
Walton 793-794

USED THROUGHOUT ON
EACH OF THE ABOVE CON-
TRACTS CARRIED OUT BY THE
RAILWAY SIGNAL, CO., LTD.

TELEGRAPH :
Sigco, Phone L'pool

THE SCIENCE OF TRANSPORT

- ☞ In earlier days transport activities were departmentalized : railway men had less need to concern themselves with what was happening in provinces adjacent to their own. But meantime road transport has forged ahead and, like docks and shipping, has come within the sphere of railway activity. In fact, a more appropriate term nowadays for a railway would be a *transport* undertaking.
- ☞ Railwaymen, therefore, need to keep abreast, not only with what is happening in other departments than their own, but in all branches of transport, for even in air transport railways have now an immediate concern. Their requirements are met by MODERN TRANSPORT, which is appropriately known as *The Times* of the Transport World.
- ☞ MODERN TRANSPORT is accordingly regarded by the administrative, engineering and operating officers of the railway companies as the principal medium of information regarding transport activities throughout the world and as the means of acquainting themselves with all the latest devices, manufactures and products affecting transport.



"THE TIMES" OF THE TRANSPORT WORLD

The Newspaper of the Transport Industry.
Published every Friday at

**NORMAN HOUSE, 105/109 STRAND
LONDON, W.C.2**

Price 3d or Annual Subscription
payable in advance and postage free, British Isles 15/- Abroad 20/-