

CO-OPERATIVE MOVEMENT
in Mysore State



IMPORTANT STATISTICS
(1961-65)



Issued by :
DEPARTMENT OF CO-OPERATION
(Statistics Branch)

Published by :
THE MYSORE STATE CO-OPERATIVE UNION

PREFATORY NOTE

Co-operative Movement in Mysore State has been steadily growing. From 14,871 societies with a membership of 24.37 lakhs and working capital of Rs. 103 crores during the year 1961 the number of societies has risen to 18,374 with a membership of over 35 lakhs and a working capital of Rs. 169 crores during the year 1965. This will give the magnitude of the developmental activities in the Co-operative field. It has, therefore, become necessary to have an authoritative statistical data not only for the use of the officers of the Department, but also for the use of Co-operators and others interested in the movement.

After the re-organisation of the States in 1956, this is the first issue depicting the Co-operative Movement in figures and charts. The figures are based on the various statistical returns furnished to the Reserve Bank of India and also on the basis of the annual Administration Reports of the Department.

This book, I am sure will create wide interest among the public in knowing the various aspects of Co-operative Movement and their activities.

C. A. JAMAKHANDIMATH

*Registrar of Co-operative Societies
Mysore State*

Bangalore
April 15, 1967

PUBLISHER'S NOTE

Since the re-organisation of the States, there has been a spectacular development in the Co-operative Movement in Mysore. The Movement has spread to almost all the spheres of economic activity.

In furtherance of its objects to publish literature on Co-operation, the Mysore State Co-operative Union has the privilege to bring out this booklet. The booklet gives the vivid picture of the progress of the Co-operative Movement in the State. We are thankful to the Registrar of Co-operative Societies in Mysore for the opportunity given to the Union to publish the booklet on behalf of the Department. It is hoped that the booklet will be of use to the non-officials as well as officials in the Co-operative Movement.

Bangalore
September 15, 1967

A. S. PATIL
President, Mysore State Co-operative Union, Ltd.

CONTENTS

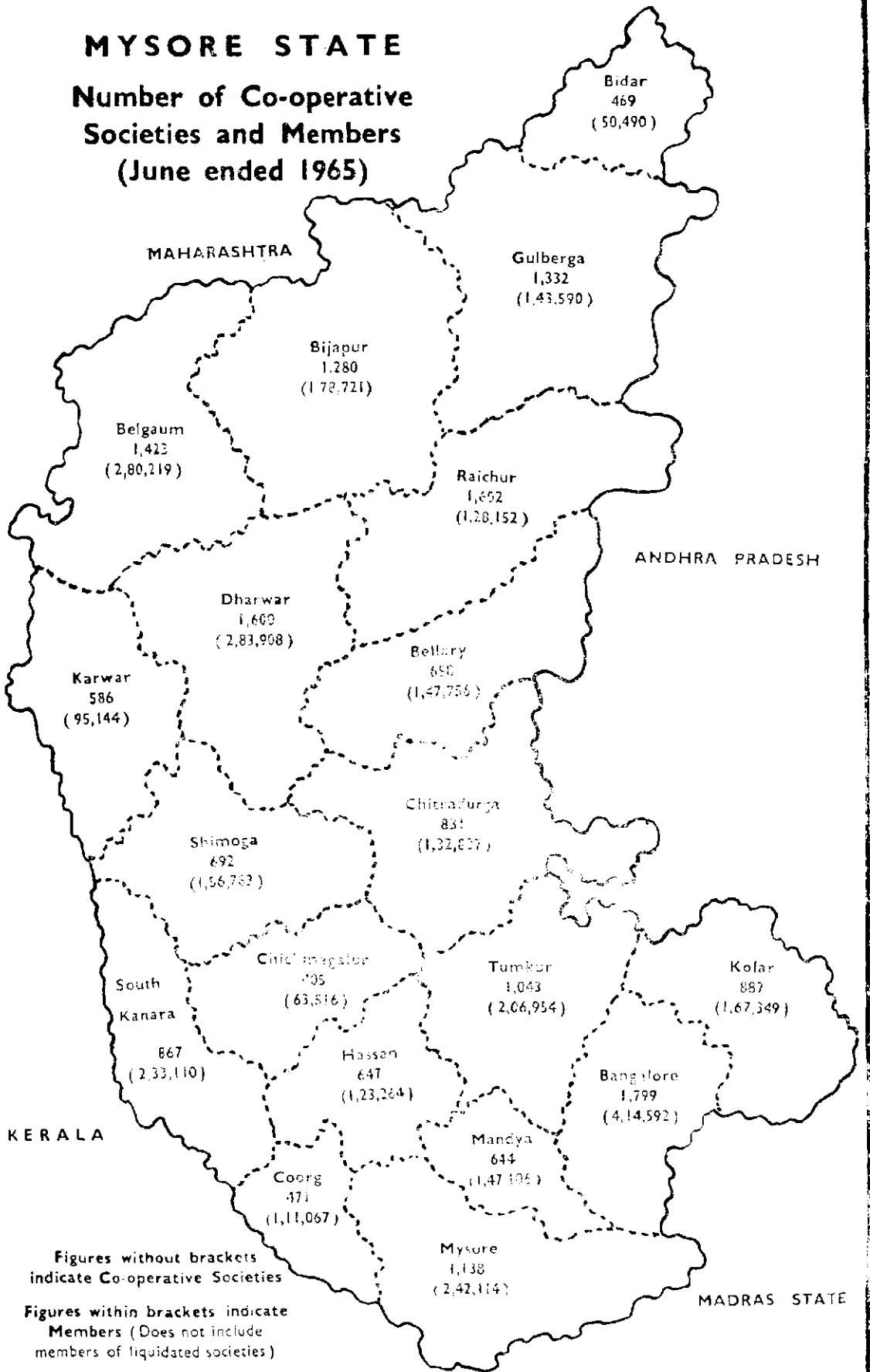
<i>Sl. No.</i>	<i>Page No.</i>
1. Mysore at Glance — <i>General Statistics</i> ...	5
2. Co-operative Movement in Mysore — <i>Divisionwise Statistics</i> ...	10
3. Co-operative Movement in Mysore — <i>Districtwise Statistics</i> ...	11
4. Co-operative Movement in Mysore — <i>Talukwise Statistics</i> ...	12
5. Co-operative Movement in Mysore — <i>General details</i> ...	21
6. Mysore State Co-operative Apex Bank — <i>General details</i> ...	22
7. District Co-operative Central Banks — <i>General details</i> ...	23
8. Mysore State Co-operative Industrial Bank — <i>General details</i> ...	23
9. District Co-operative Central Banks — <i>Loan operations</i> ...	24
10. Primary Agricultural Credit Societies — <i>General details</i> ...	31
11. Primary Agricultural Credit Societies — <i>Loan operations</i> ...	32
12. Mysore Central Co-operative Land Development Bank — <i>General details</i> ...	33
13. Primary Land Development Banks — <i>General details</i> ...	33
14. Primary Land Development Banks — <i>Loan operations</i> ...	34
15. Mysore State Co-operative Marketing Societies — <i>General details</i> ...	35
16. Primary Co-operative Marketing Societies — <i>General details</i> ...	35
17. Types of Marketing Societies and Storage facilities ...	36
18. Co-operative Sugar Factories — <i>General details</i> ...	37
19. Co-operative Processing Societies — <i>General details</i> ...	38
20. Lift Irrigation Societies — <i>General details</i> ...	39
21. Co-operative Farming Societies — <i>General details</i> ...	40
22. Consumers Wholesale Stores — <i>General details</i> ...	41
23. Primary Consumers Stores — <i>General details</i> ...	41
24. Non-agricultural Societies — <i>General details</i> ...	42
25. Mysore State Housing Co-operatives — <i>General details</i> ...	43
26. Primary Housing Co-operatives — <i>General details</i> ...	43
27. Fisheries Co-operatives — <i>General details</i> ...	44
28. Co-operative Spinning Mills — <i>General details</i> ...	45
29. Co-operative Education ...	46
30. Administrative set up of the Co-operative Department ...	47
31. Co-operative Movement — June, 1965 — <i>General details of all types</i> ...	49

MAPS & GRAPHS

1. Map of Mysore — <i>Co-operatives and Members</i> ...	1
2. Map of Mysore — <i>Major Co-operatives</i> ...	3
3. Progress of Co-operatives and Members ...	15
4. Progress of Deposits and Share Capitals ...	17
5. Progress of Working Capital and Loan Advances ...	19
6. Primary Agricultural Co-operatives — <i>Members</i> ...	25
7. Primary Agricultural Credit Societies — <i>Shares and Deposits</i> ...	27
8. Primary Agricultural Credit Societies — <i>Working Capital and Loan Advances</i> ...	29

MYSORE STATE

Number of Co-operative Societies and Members (June ended 1965)

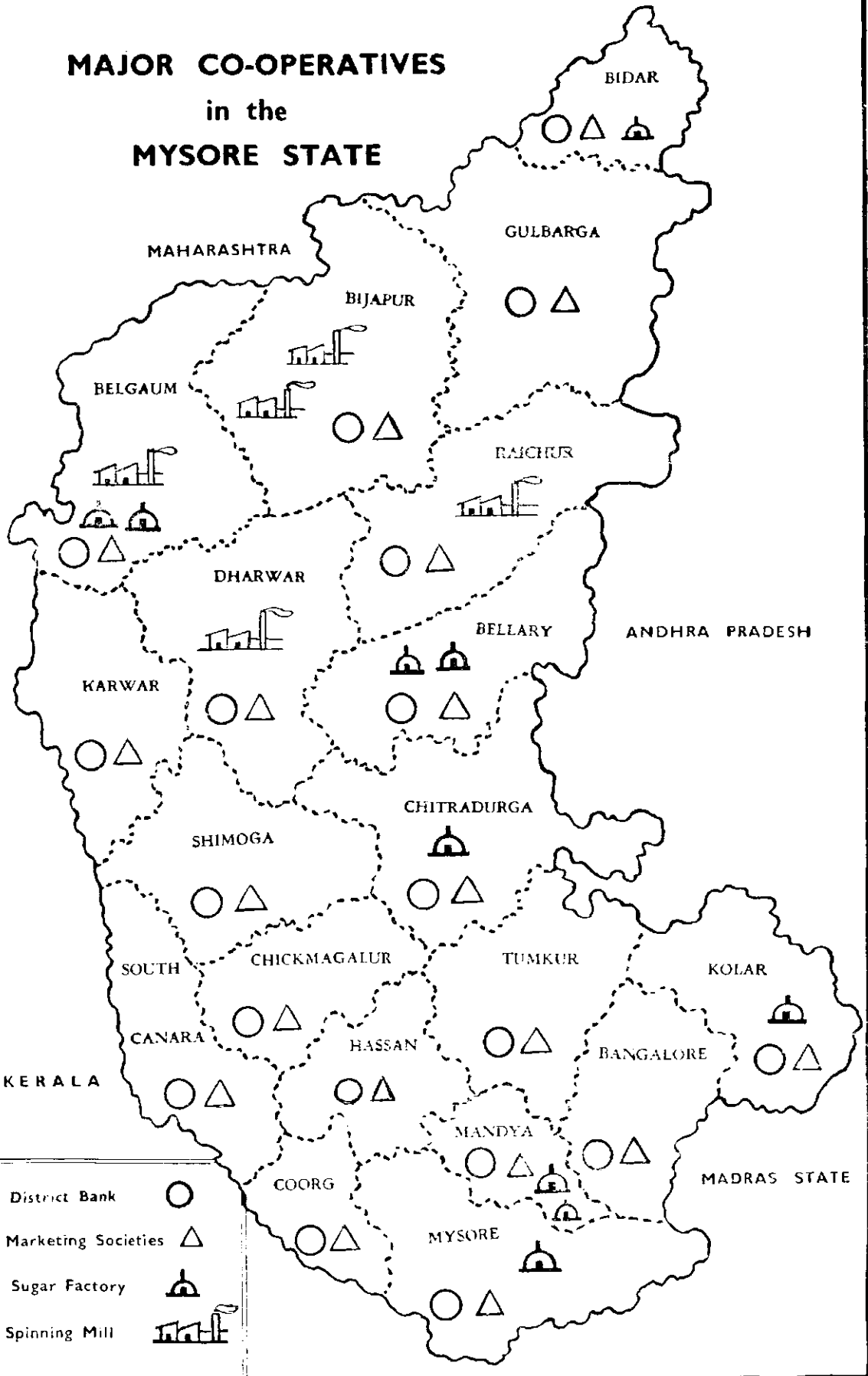


Figures without brackets indicate Co-operative Societies

Figures within brackets indicate Members (Does not include members of liquidated societies)

MADRAS STATE

MAJOR CO-OPERATIVES in the MYSORE STATE



- District Bank ○
- Marketing Societies △
- Sugar Factory ☶
- Spinning Mill 🏭

MYSORE AT A GLANCE, 1964

Sl. No.	Items	State
1.	Taluks	... No. 172
2.	Hoblis	... ,, 662
3.	Inhabited Villages (1951 Census)	... ,, 25,880
4.	Towns (1961 Census)	... ,, 221
5.	Area	... Sq. Kms. 1,92,203
6.	Population (1961 Census)	... ,, 2,35,86,772
7.	Density per sq. Kilometre	... ,, 123
8.	Male Population (1961 Census)	... ,, 1,20,40,923
9.	Female Population	... ,, 1,15,45,849
10.	Rural Population	... ,, 1,83,20,279
11.	Urban Population	... ,, 52,66,493
12.	Workers	... Percentage 45.5
13.	Non-Workers	... ,, 54.5
14.	Birth-rate (1962)	... ,, 19.8
15.	Death-rate (1962)	... ,, 8.0
16.	Total Geographical Area (1962-63)	... Hectares 1,88,10,929
17.	Net Area Sown (1962-63)	... ,, 1,03,96,299
18.	Fallow Land (1962-63)	... ,, 12,56,709
19.	Other Uncultivable Land (1962-63)	... ,, 26,98,622
20.	Forests (1962-63)	... ,, 26,89,492
21.	Land not available for Cultivation (1962-63)	... ,, 17,96,807
22.	Normal Rainfall	... Millimetres 1189.8
23.	Actual Rainfall (1964)	... ,, 1,352.8
24.	Net Area Irrigated (1962-63)	... Hectares 94,07,011
25.	Area Irrigated by Canals (1962-63)	... ,, 26,89,025
26.	Area Irrigated by Tanks (1962-63)	... ,, 37,01,732
27.	Area Irrigated by Wells (1962-63)	... ,, 15,55,196
28.	Area under Rice (1964-65)	... ,, 10,48,521
29.	Area under Ragi (1964-65)	... ,, 9,73,562
30.	Area under Jowar (1964-65)	... ,, 2,88,254
31.	Area under Bajra (1964-65)	... ,, 4,94,124
32.	Area under Wheat (1964-65)	... ,, 3,16,483
33.	Area under Minor Millets (1964-65)	... ,, 3,78,557
34.	Area under Gram (1964-65)	... ,, 1,43,436
35.	Area under Tur (1964-65)	... ,, 2,47,155
36.	Area under other Pulses (1964-65)	... ,, 7,96,558

Sl. No.	Items		State
37.	Area under Sugarcane (1964-65)	... Hectares	76,883
38.	Area under Cotton (1964-65)	10,34,635
39.	Area under Groundnut (1962-63)	8,69,847
40.	Land Revenue (1961-62)	... Rs.	4,49,47,249
41.	Land Revenue per capita	... Rs.	1.90
42.	Cattle (1961 Census) No.	96,73,001
43.	Buffaloes (1961 Census)	30,25,890
44.	Sheep (1961 Census)	47,64,972
45.	Goats (1961 Census)	28,94,355
46.	Poultry (1961 Census)	88,41,027
47.	Veterinary Institutions (1-4-1964)	583
48.	Hospitals (31-12-1962)	190
49.	Strength of Beds in Hospitals (31-12-1962)	17,717
50.	Dispensaries (31-12-1962)	760
51.	Primary Health Units	347
52.	Family Planning Clinics	91
53.	Total Literacy (1961 Census)	... Percentage	25.4
54.	Male Literacy (1961 Census)	35.1
55.	Female Literacy (1961 Census)	14.2
56.	Nursery Schools (1960-61)	... No.	201
57.	Primary Schools (1961-62)	28,791
58.	Middle Schools (1960-61)	4,889
59.	High Schools (1961-62)	875
60.	Basic Schools (1960-61)	3,127
61.	Colleges (1961-62)	99
62.	Research and Training Institutions including under-graduate Insti- tutions (1960-61)	76
63.	Co-operative Societies (31-3-1963)	15,876
64.	Credit Societies (31-3-1963)	10,419
65.	Non-Credit Societies (31-3-1963)	5,457
66.	Membership (31-3-1963)	29,75,448
67.	Regulated Markets (31-3-1963)	145
68.	Value of turn-over (31-3-1963)	... Rs.	11,38,386
69.	Value of Mineral Production (1963)	... Rs.	8,67,63,430
70.	Banking Offices Excluding Co- operative Banks (1960)	... No.	426
71.	Co-operative Banks (1960)	178
72.	Total Factories (1958)	1,837

Sl. No.	Items		State
73.	Engineering Factories (1958)	... No.	215
74.	Textile Factories (1958)	231
75.	Chemical Factories (1958)	138
76.	Handlooms (as on September 1963)	1,67,161
77.	Employment in Mines (1962)	42,118
78.	Employment in Government Departments (as on 31-3-1962)	1,62,397
79.	Employment in Municipalities (as on 31-3-1962)	21,230
80.	Employment in Factories (1959)	88,929
81.	Village Panchayats (1963)	7,452
82.	Municipalities including Corporations (31-3-1962)	174
83.	Post Offices (1-4-1965) Permanent	3,508
84.	Telephone Exchanges (3-12-1963)	144
85.	Telephones in use (31-2-1963)	27,224
86.	Radios in use (31-12-1963)	1,93,656
87.	Police Stations including Out-posts (31-12-1963)	806
88.	Jails including Lock-ups (31-12-1963)	105
89.	Towns and Villages Electrified (up to 31-3-1962)	4,193
90.	Length of Roads (31-12-1963)	... Kms.	47,770
91.	Length of Railway Line (1956)	2,699
92.	Major Bridges (31-3-1263)	... No.	306
93.	Registered Motor Vehicles (31-3-1963)	... No.	56,761
94.	Per Capita Income (1960-61)	... Rs.	268
95.	C. D. Blocks (1-3-1964)	... No.	291
96.	Villages Covered (1961 Census)	25,880
97.	Population Covered (1961 Census)	1,83,59,976
98.	Printing Presses (31-3-1962)	679
99.	Periodicals Published (1961)	262
100.	Permanent Talkies (as on 1-10-1965)	286

Figures based on the Statistics issued by Department of Statistics

**CO-OPERATIVE MOVEMENT
IN
Mysore State**

TREND OF PROGRESS

Agricultural Credit and other Societies as on 30-6-1965 — Division-wise number

No. of Divisions : 4

No. of Districts : 19

Name of the Division	No. of Districts	Total No. of working Societies	Total membership excluding liquidated Societies	Agricultural Credit Societies	Other Societies	Liquidated Societies	Total No. of Societies including liquidated societies
1	2	3	4	5	6	7	8
State figures	19	16,930	33,06,672	9,801	7,129	1,444	18,374
Bangalore	5	4,752	10,785,15	2,411	2,341	500	5,252
Mysore	6	3,986	9,20,177	2,280	1,706	186	4,172
Belgaum	4	4,625	8,37,992	2,366	2,259	264	4,889
Gulburga	4	3,567	4,69,988	2,744	823	494	4,061

Agricultural Credit and other Societies as on 30-6-1965 — District wise Number

No. of Districts : 19

No. of Taluks : 172

Sl. No.	Name of the District	No. of Taluks	Total No. of working Societies	Total membership excluding Liq. C. S.	Agril. Credit C. S.	Other C. S.	Liqui-dated C. S.	Total No. of C. S.
1	2	3	4	5	6	7	8	9
I. BANGALORE DIVISION :								
1.	Bangalore	11	1,712	4,14,592	597	1,115	87	1,799
2.	Tumkur	10	971	2,06,954	622	349	72	1,043
3.	Kolar	11	774	1,67,349	444	330	113	887
4.	Chitradurga	9	671	1,32,837	401	270	160	831
5.	Shimoga	9	624	1,56,783	347	277	68	692
II. MYSORE DIVISION :								
6.	Mysore	11	1,106	2,42,114	626	480	32	1,138
7.	Hassan	8	602	1,23,264	378	224	45	647
8.	Mandya	7	574	1,47,106	360	214	70	644
9.	Mangalore	8	850	2,33,110	383	467	17	867
10.	Coorg	3	467	1,11,067	312	155	4	471
11.	Chickamagalur	7	387	63,516	221	166	18	405
III. BELGAUM DIVISION :								
12.	Belgaum	10	1,380	2,80,219	691	689	43	1,423
13.	Bijapur	11	1,205	1,78,721	698	507	75	1,280
14.	Dharwar	16	1,492	2,83,908	749	743	108	1,600
15.	Karwar	11	548	95,144	228	320	38	586
IV. GULBURGA DIVISION :								
16.	Bidar	4	447	50,490	309	138	22	469
17.	Gulburga	10	1,250	1,43,590	1,000	250	82	1,332
18.	Raichur	9	1,240	1,28,152	1,025	215	362	1,602
19.	Bellary	8 (7)	630	1,47,756	410	220	28	658
		172	16,930	33,06,672	9,801	7,129	1,444	18,374

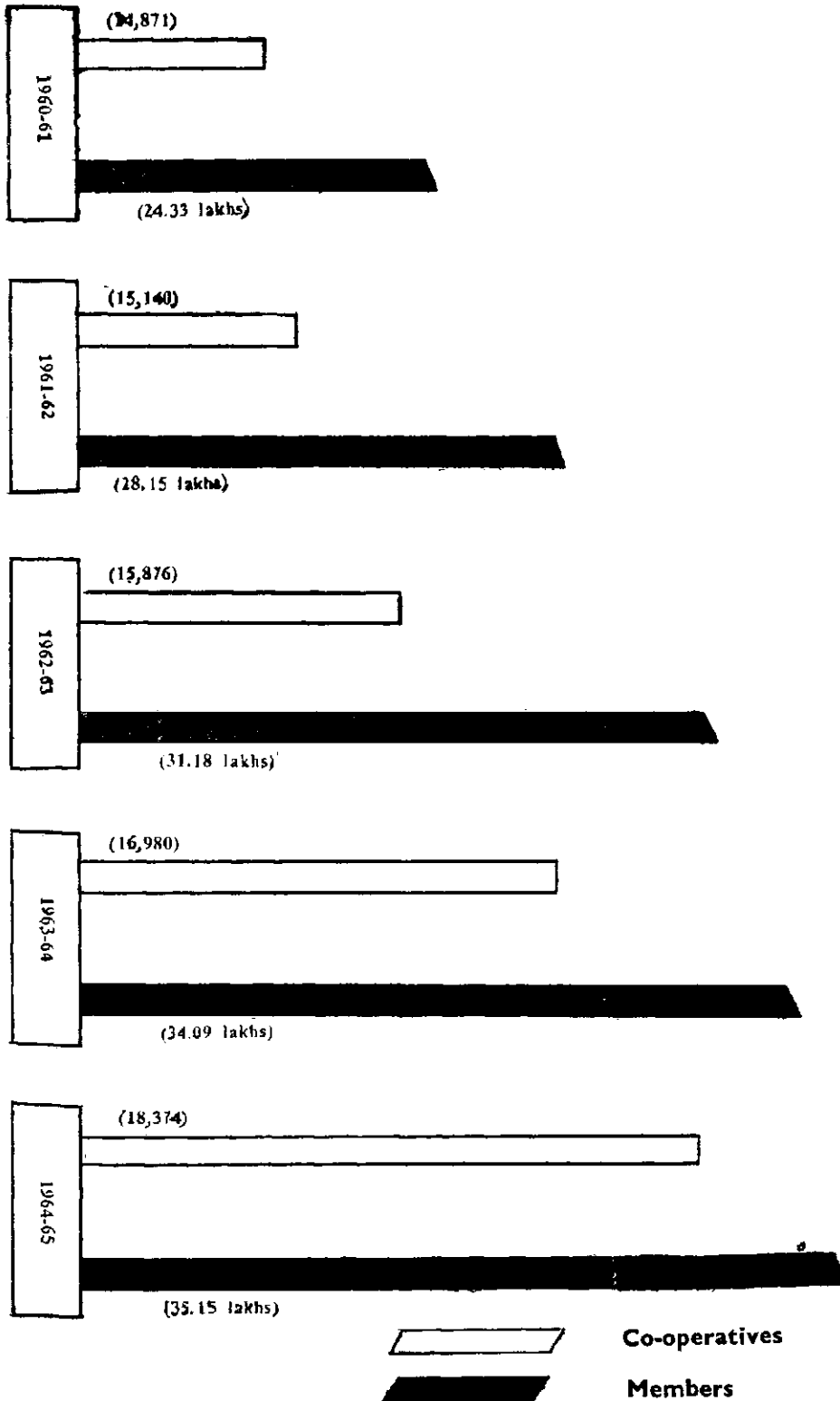
Number of Societies as on 30-6-1965 — Taluk wise

I. BANGALORE DIVISION. (5252)		(d) Chitradurga (831)	
(a) Bangalore Dist (1,799)		33. Chitradurga	152
1. Bangalore South	672	34. Davanagere	147
2. Bangalore North	132	35. Harihar	59
3. Anekal	115	36. Challkere	104
4. Channapatna	91	37. Holalkere	85
5. Ramanagaram.	77	38. Hiriyyur	93
6. Magadi	142	39. Hosadurga	76
7. Nelmangala	132	40. Jagalur	68
8. Devanahally	87	41. Molakalmuru	47
9. Doddaballapur	111		
10. Hosakote	99	(e) Shimoga (692)	
11. Kanakapura	141	42. Shimoga	121
		43. Bhadravathi	78
(b) Tumkur (1,043)		44. (a) Channagiri	65
12. Tumkur	169	(b) Santhebennur	56
13. Madhugiri	106	45. Honnali	70
14. Pavgada	71	46. Shikaripur	65
15. Gubbi	96	47. Soraba	72
16. Kunigal	170	48. Sagar	75
17. Tiptur	97	49. Hosanagar	32
18. Turuvekere	85	50. Theerthahalli	58
19. Chikkanayakanahally	75		
20. Koratagere	74	II MYSORE DIVISION (4172)	
21. Sira	100	(a) Mysore Dist (1,138)	
(c) Kolar (887)		51. Mysore	260
22. Kolar Ist Block	135	52. Nanjangud	123
23. Malur	78	53. Yelandur	41
24. Bangarpet	89	54. Hunsur	71
25. Mulbagal	83	55. Priyapatna	66
26. Srinivasapur	65	56. H. D. Kote	84
27. Chintamani	96	57. T. Narsipur	114
28. Bagepalli	54	58. Gundlupet	66
29. Siddlagatta	69	59. K. R. Nagar	91
30. Gudibanda	25	60. Kollegal	66
31. Chikkaballapur	100	61. Chamarajanagar	156
32. Gouribidanur	95		

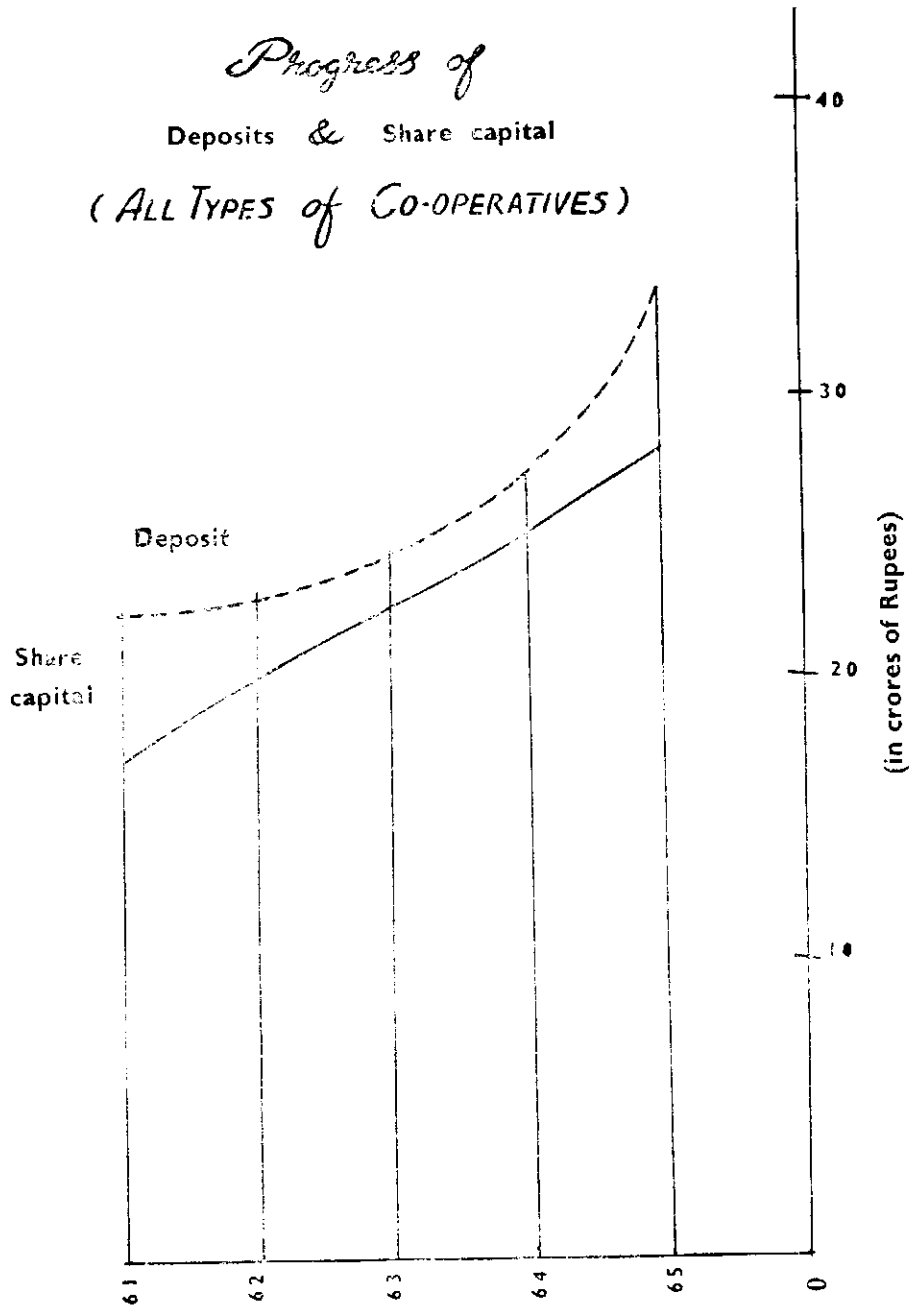
(b) Hassan Dist. (647)		III. BELGAUM DIVISION (4889)	
62. Hassan	142	(a) Belgaum District (1423)	
63. Alur	35	95. Belgaum	277
64. Belur	61	96. Khanapur	87
65. Channarayapatna	93	97. Bailhongal	122
66. Arasikere	124	98. Chikkodi	189
67. Holenarasipur	60	99. Athani	105
68. Arakalgud	85	100. Gokak	154
69. Sakaleshpur	47	101. Hukkeri	154
		102. Raibag	85
(c) Mandya Dist. (644)		103. Ramadurga	124
70. Mandya	151	104. Soundathi	126
71. Maddur	105		
72. Malavalli	104	(b) Bijapur District (1280)	
73. Pandavapura	64	105. Bijapur	204
74. Srirangapatna	49	106. Indi	140
75. K. R. Pet	95	107. Bagewadi	100
76. Nagmangala	76	108. Bagalkot	110
		109. Badami	130
(d) Coorg (471)		110. Biligi	65
77. Somawarpet	85	111. Jamkandi	135
78. Mercara	208	112. Hangund	125
79. Virajpet	178	113. Muddebihal	85
		114. Sindagi	93
(e) Chickamagalur (405)		115. Mudhol	93
80. Chickamagalur	100	(c) Dharwar District (1,600)	
81. Tarikere	90	116. Dharwar	219
82. Mudugere	40	117. Hubli	167
83. Kadur	106	118. Gadag	148
84. Koppa	40	119. Munderagi	62
85. Sringeri	12	120. Kalghatgi	63
86. Narasimharajapur	17	121. Navalgund	86
		122. Ron	111
(f) Mangalore District (867)		123. Naragund	50
87. Mangalore	238	124. Haveri	137
88. Karkala	89	125. Hongal	78
89. Coondapura	107	126. Hirekerur	76
90. Udipi	165	127. Mundgod	52
91. Bantwal	92	128. Byadagi	60
92. Belthangadi	64	129. Ranibennur	146
93. Puttur	64	130. Shiggoan	76
94. Sullia	48	131. Sirahatti	6

(d) Karwar (North Kanara) (586)		(b) Raichur District (1602)	
132. Karwar	100	153. Raichur	268
133. Ankola	58	154. Manvi	78
134. Kumta	90	155. Devadurga	155
135. Honnavar	62	156. Lingsugur	136
136. Bhatkal	35	157. Kustigi	185
137. Sirsi	90	158. Koppal	195
138. Siddapur	36	159. Gangavathi	180
139. Mundagod	24	160. Sindanoor	241
140. Yellapur	26	161. Yelburga	164
141. Haliyal	48	(c) Bellary District (658)	
142. Supa	17	162. Bellary	180
IV. RAICHUR DIVISION (4061)		163. Kudlagi	85
(a) Gulburga District (1332)		164.* Kamalapura	27
143. Gulburga	250	165. Hadagali	76
144. Alland	126	166. Harapanahalli	69
145. Afzalpur	100	167. Hospet	100
146. Chittapur	137	168. Sandur	37
147. Shorpur	135	169. Siraguppa	81
148. Shapur	127	(d) Bidar District (469)	
149. Jeweragi	117	170. Bidar	173
150. Sedam	93	171. Aurad	89
151. Chincholli	113	172. Bhalki	87
152. Yadagiri	134	173. Humanabad	120
		* Kamalapura is not a taluk.	

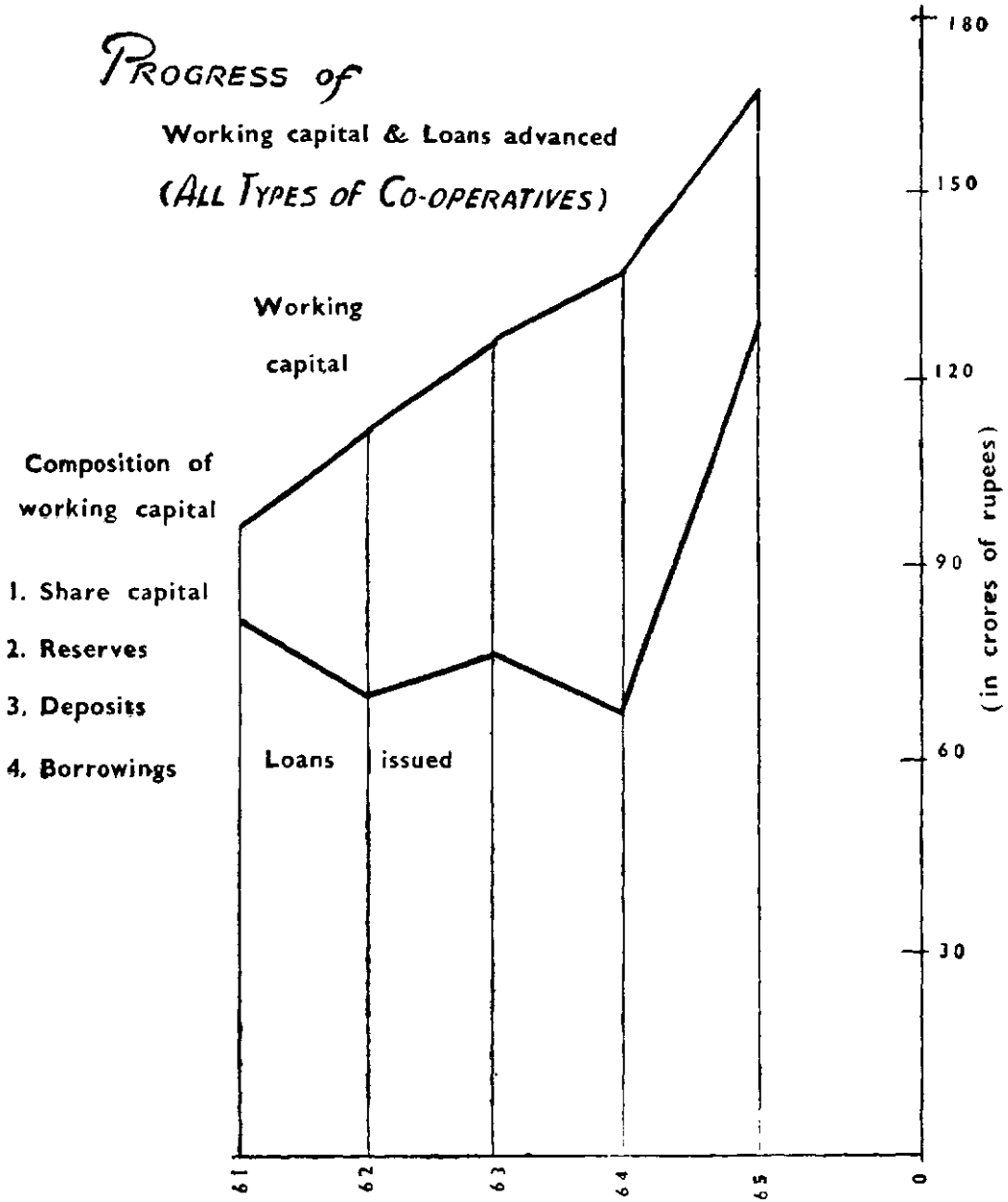
Progress of Co-operatives and Membership



Progress of
Deposits & Share capital
(ALL TYPES of CO-OPERATIVES)



PROGRESS of
Working capital & Loans advanced
(ALL TYPES OF CO-OPERATIVES)



Co-operative Movement in Mysore State — General Trend of Progress

(Year ending 30th June) *(Rupees in lakhs)*

Sl. No.	Particulars	1961	1962	1963	1964	1965
1.	No. of Societies	14,871	15,140	15,876	16,980	18,374
2.	Membership (in lakhs)	24.33	28.15	31.18	34.09	35.15
3.	Share Capital	1,738.39	2,016.58	2,277.41	2,491.12	2,843.59
4.	Deposits	2,200.63	2,313.17	2,432.70	2,682.79	3,302.56
5.	Reserve and other Funds	772.43	933.06	1,069.57	1,150.80	1,292.43
6.	Borrowings	5,632.09	6,387.09	7,125.69	7,493.98	9,511.83
7.	Working Capital	10,343.54	11,649.90	12,905.37	13,818.69	16,955.41
8.	Loans Issued	8,355.28	7,332.17	7,550.67	6,668.51	1,314.88
9.	Loans Recovered	6,777.08	6,501.93	6,878.73	5,912.98	11,325.36
10.	Loans outstanding	6,847.69	7,585.94	8,110.44	8,351.10	11,098.07
11.	Loans overdue	1,122.64	1,587.25	1,971.66	1,735.08	1,946.12
12.	Net Profit	163.31	168.59	180.56	226.48	295.46
13.	Net Loss	29.36	35.09	92.08	72.23	92.90

THE MYSORE STATE CO-OPERATIVE APEX BANK — GENERAL DETAILS

*Year ending 30th June)**(Rupees in lakhs)*

Sl. No.	PARTICULARS	1961	1962	1963	1964	1965
1.	No. of Members	78	69	63	63	62
2.	Paid-up share capital	124.34	142.11	155.00	168.59	172.87
3.	Deposits	368.40	357.21	431.30	468.17	508.02
4.	Reserve and other funds	20.55	27.68	39.38	46.78	55.43
5.	Total borrowings—outstanding	908.56	939.85	945.14	1024.21	1235.12
6.	Working capital	1421.85	1466.85	1570.82	1707.75	1971.44
7.	Loans issued	1580.32	1397.82	1370.00	1806.16	2547.43
8.	Loans recovered	1309.81	1357.75	1320.95	1586.27	2168.86
9.	Loans outstanding	1122.42	1162.49	1211.80	1431.69	1810.26
10.	Net profit	8.38	15.30	14.04	15.24	16.64
11.	Overdue	8.71	28.79	9.94	11.63	7.34
12.	Percentage of working expenditure to gross profit	11.50	16.75	15.50	16.80	14.23

District Central Co-operative Banks — General Details

(Year ending 30th June)

(Rupees in lakhs)

Sl. No.	Particulars	1961	1962	1963	1964	1965
1	2	3	4	5	6	7
1.	No. of Banks	19 + 4*	19	19	19	19
2.	Membership	36,935	34,677	35,145	17,340	17,662
3.	Share Capital	3,41.21	3,62.50	3,98.83	4,49.72	4,78.87
4.	Deposits	10,30.68	10,40.33	11,58.27	12,79.94	15,50.38
5.	Reserve and other funds	64.76	66.27	80.33	96.12	1,20.44
6.	Borrowings	11,43.35	11,28.03	11,51.27	12,81.50	16,94.49
7.	Working Capital	25,80.00	25,97.13	27,88.70	31,07.28	38,44.18
8.	Loans issued	33,49.55	25,48.38	26,67.67	36,01.44	54,86.91
9.	Loans recovered	29,29.51	25,11.45	25,54.61	32,97.03	48,32.96
10.	Loans outstanding	19,15.02	19,83.69	20,96.75	24,01.16	30,55.11
11.	Loans overdue	4,05.08	4,57.09	6,42.41	5,74.59	6,60.01
12.	Net Profit	22.66	20.26	23.57	30.84	39.56

*Figure 4 indicates District Industrial Co-operative Banks

The Mysore State Co-operative Industrial Bank — General Details

(Year ending 30th June)

(Rupees in lakhs)

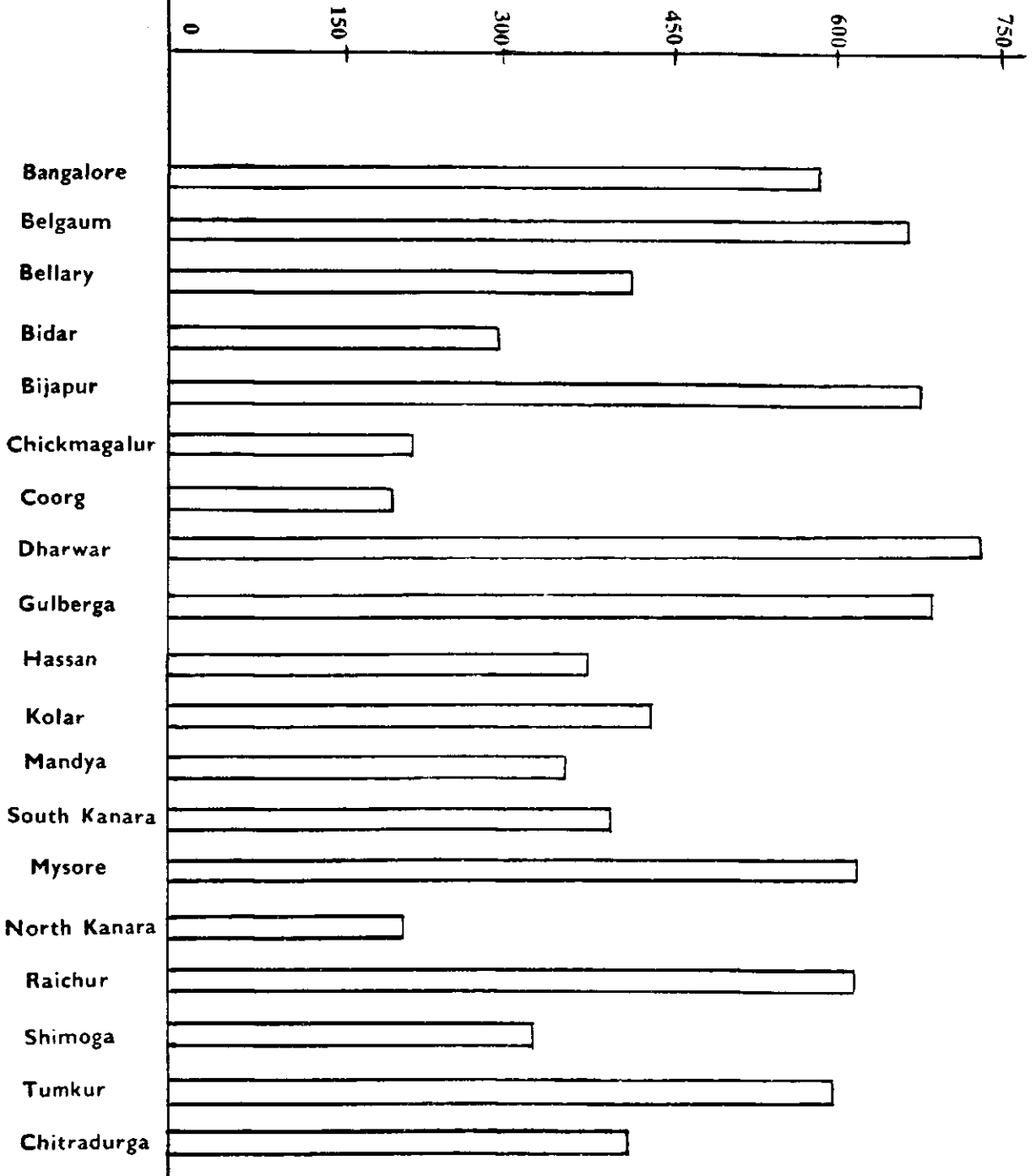
Sl. No.	Particulars	1961	1962	1963	1964	1965
1.	No. of members	140	141	145	168	201
2.	Share Capital	45.70	45.86	46.03	46.31	50.70
3.	Reserve and other funds	5.19	6.61	7.56	8.74	10.68
4.	Deposits	10.18	8.32	9.42	9.67	14.87
5.	Loans issued	17.37	14.29	11.77	11.30	64.66
6.	Loans recovered	14.42	12.93	9.99	9.29	22.51
7.	Loans overdue	88.92	90.28	92.07	94.08	136.23
8.	Net profit	1.65	1.22	1.01	1.36	1.88

**Comparative Details in respect of Borrowings, Loans Outstanding and Overdues of
District Co-operative Central Bank for the Year 1965**

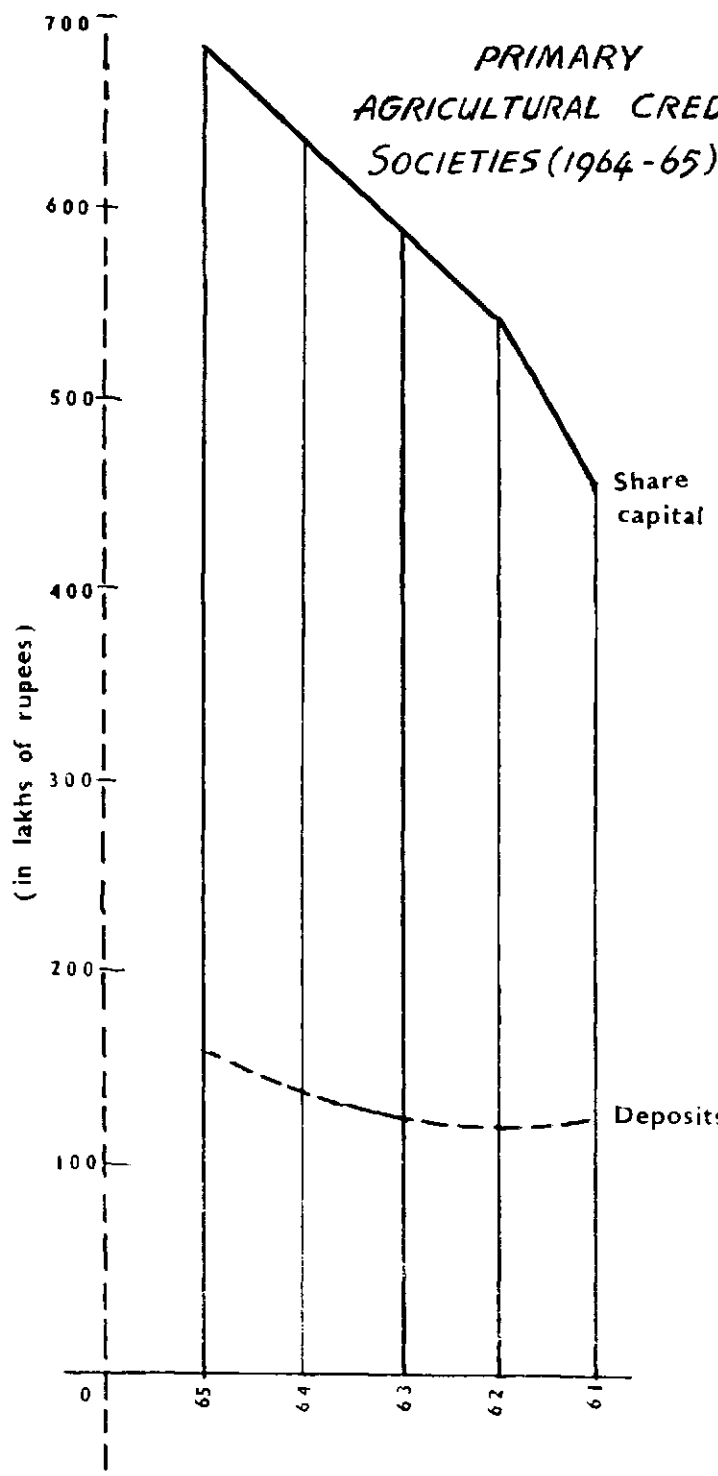
(Rupees in thousands)

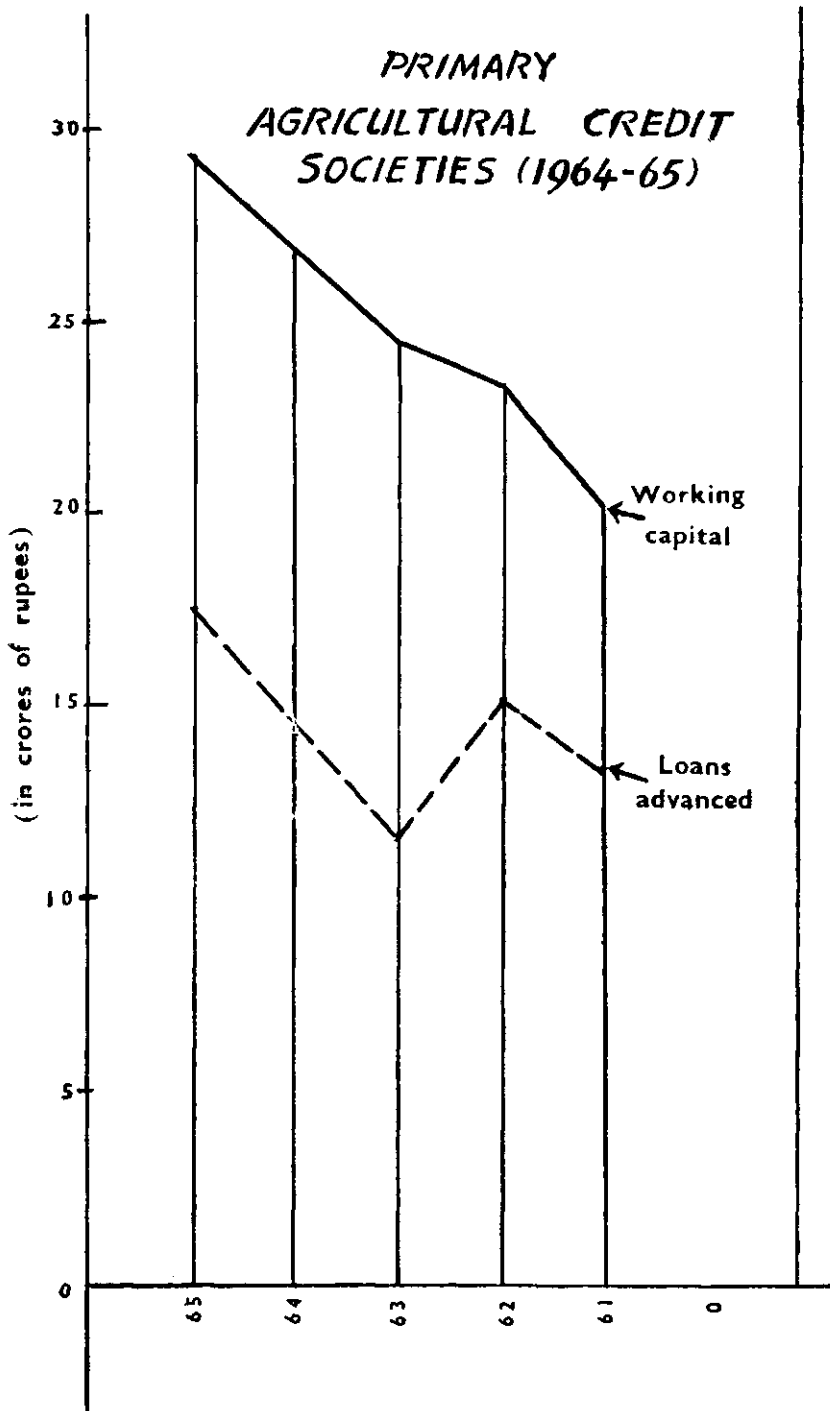
Sl. No.	Name of the District Central Co-operative Bank	Borrowings 1965	Loans outstanding 1965	Overdue 1965	Percentage of overdues to outstanding	
1.	District Co-operative Central Bank	Bangalore	78,38	1,61.76	35,29	21.80
2.	..	Belgaum	2,06,50	3,79,02	30,69	8.10
3.	..	Bellary	1,52,05	2,33,44	51,16	21.80
4.	..	Bidar	55,44	99,57	50,27	50.50
5.	..	Bijapur	1,36,83	2,43.52	46,19	19.00
6.	..	Chitradurga	39,18	85,55	43,47	50.80
7.	..	Chickamagalur	21,58	40,41	8,83	21.90
8.	..	Coorg	54,97	1,04,85	10,71	10.21
9.	..	Dharwar	2,54,94	5,17,22	33,21	6.42
10.	..	Gulburga	66,90	1,13,69	59,72	52.60
11.	..	Hassan	39,61	71,23	35,01	49.10
12.	..	Kolar	48,55	74,64	52,97	71.00
13.	..	Mandya	1,07,35	1,99.98	38,87	19.44
14.	..	Mysore	90,20	1,31,57	28,90	22.00
15.	..	North Kanara	1,00.17	1,48,19	8,22	5.54
16.	..	Raichur	77,88	1,21.40	35,89	29.00
17.	..	Shimoga	75,40	1,27,39	40,68	34.60
18.	..	South Kanara	52,95	1,19,11	5,70	4.8
19.	..	Tumkur	36,41	92,57	44,23	48.00
			16,94,49	30,55,11	6,60,01	

NUMBER OF PRIMARY AGRICULTURAL CO-OPERATIVES



*PRIMARY
AGRICULTURAL CREDIT
SOCIETIES (1964-65)*





Agricultural Credit Societies — General Details

<i>(Year ending 30th June)</i>		<i>(Rupees in lakhs)</i>				
Sl. No.	Particulars	1961	1962	1963	1964	1965
1.	No. of societies	9,107	9,361	9,365	9,365	8,741*
2.	Membership (in lakhs)	11.98	13.58	14.06	14.59	14.91
3.	Share capital	4,72.41	5,70.66	6,02.63	640.20	6,96.78
4.	Deposit	1,21.84	1,21.35	1,27.60	1,42.89	1,64.28
5.	Reserve and other funds	1,48.76	1,68.17	1,87.07	2,23.26	2,36.69
6.	Borrowings	12,85.00	15,21.09	16,12.00	16,89.51	18,16.15
7.	Working capital	20,28.01	23,81.27	25,29.30	26,95.67	29,13.90
8.	Loans issued	14,14.70	15,17.43	12,33.85	15,17.88	17,80.36
9.	Loans recovered	11,74.46	12,84.09	11,08.94	13,72.00	17,76.88
10.	Loans outstanding	16,06.51	18,33.85	19,58.76	21,04.64	21,70.31
11.	Loans overdue	5,46.75	8,40.76	9,48.29	8,00.58	8,48.16
12.	Net profit	46.49	39.51	43.83	61.21	87.85
13.	Losses	11.06	12.48	21.63	21.39	29.57

Agricultural credit societies include large-sized and small-sized societies.

* does not include liquidated societies.

Agricultural Credit Societies — Coverage

<i>(Percentage of villages and rural population covered by Co-operatives)</i>					
	1961	1962	1963	1964	1965
1. Coverage of Villages	83%	85%	91%	95%	95.3%
2. Rural population covered by the Co-operatives	32%	37%	38%	42.3%	43%

PURPOSE-WISE LOANS ISSUED BY THE PRIMARY AGRICULTURAL CREDIT SOCIETIES

(Rs. in Thousands)

	1961		1962		1963		1964		1965	
	S.T.	M.T.	S.T.	M.T.	S.T.	M.T.	S.T.	M.T.	S.T.	M.T.
1	2	3	4	5	6	7	8	9	10	11
1. Seasonal Agril. operations	11,09,98	—	11,14,47	—	9,78,11	—	12,47,26	—	14,76,69	—
2. Purchase of Agril. implements	56,93	—	39,60	—	48,26	—	37,51	—	32,89	—
3. Marketing of Crops	31,62	—	34,15	—	35,07	—	36,74	—	67,98	—
4. Industrial purpose	2,16	—	3,39	—	2,16	—	4,23	—	43	—
5. (a) Consumption Loans	42,75	—	20,06	—	19,29	—	17,35	—	19,37	—
(b) Other purpose	14,48	—	37,09	—	53,87	—	54,52	—	40,52	—
6. Sinking and repairs to wells	—	41,47	—	22,18	—	12,14	—	28,33	—	5,87
7. Purchase of machinery	—	33,72	—	19,36	—	18,27	—	27,28	—	15,02
8. Minor improvements	—	41,53	—	57,38	—	16,96	—	33,10	—	57,18
9. Purchase of cattle	—	26,50	—	23,67	—	30,52	—	9,61	—	19,16
10. Other purposes	—	13,66	—	10,50	—	19,20	—	11,95	—	45,25
TOTAL	12,57,82	1,56,88	12,48,76	1,33,09	11,36,76	97,09	14,07,61	1,10,27	16,37,88	1,42,48

Agriculture Credit Societies

Position of Loans, Advances, Recovery, Outstanding and Overdue Position to Loans outstanding

(Rs. in lakhs)

	1961	1962	1963	1964	1965
1. Loans Advanced	14,14.70	15,17.43	12,33.85	15,17.88	17,80.36
2. Loans Recovered	11,74.46	12,84.09	11,08.94	13,72.00	17,76.88
3. Loans Outstanding	16,00.51	18,33.85	19,58.76	21,04.64	21,70.31
4. Loans Overdue	5,46.75	8,40.76	9,48.29	8,00.58	8,48.16

Mysore Central Co-operative Land Development Bank — General Details

<i>(Year ending 30th June)</i>		<i>(Rupees in lakhs)</i>				
Sl. No.	Particulars	1961	1962	1963	1964	1965
1.	No. of members	118	126	146	150	152
2.	Share Capital	45.69	51.05	66.55	74.85	90.76
3.	Debentures	4,05.39	5,06.42	6,07.05	7,52.76	10,20.01
4.	Other borrowings	22.27	23.02	47.28	89.84	75.08
5.	Reserve and other funds	12.51	15.40	18.71	22.40	24.15
6.	Working Capital	4,85.86	5,95.89	7,39.59	9,39.85	12,10.00
7.	Loans issued	96.65	1,04.55	1,40.11	1,91.14	2,44.04
8.	Loans recovered	21.53	22.63	26.86	34.11	53.49
9.	Loans outstanding	3,88.74	4,71.06	5,84.31	7,41.34	9,31.89
10.	Net Profit	0.88	1.00	2.27	2.51	3.74

Primary Land Development Banks in Mysore State — General Details

<i>(Year ending 30th June)</i>		<i>(Rupees in lakhs)</i>				
Sl. No.	Particulars	1961	1962	1963	1964	1965
1.	No. of Banks	118	138	148	150	155
2.	Membership	1,11,320	1,27,466	1,45,122	1,59,788	1,83,074
3.	Share Capital	34.28	40.96	48.98	51.09	71.60
4.	Deposits	N.A.	1.44	0.42	1.32	1.70
5.	Reserve and other funds	6.20	7.86	8.60	8.90	11.34
6.	Borrowings	3,99.16	4,80.05	5,91.07	6,52.65	9,13.06
7.	Working Capital	4,39.64	5,30.32	9,49.07	7,13.86	9,97.70
8.	Loans issued	96.67	1,23.24	1,36.07	1,65.81	3,06.89
9.	Loans recovered	22.25	26.26	29.51	1,02.30	56.91
10.	Loans outstanding	3,83.32	4,80.30	5,86.86	6,50.37	9,00.35
11.	Loans overdue	15.60	15.36	23.10	23.59	38.09
12.	Net profit	1.11	0.92	0.72	1.77	2.93
13.	Losses	2.71	6.10	5.62	4.47	3.72

Primary Land Development Banks — District wise number

(June 1965)

Bangalore	10	Hassan	8
Belgaum	9	Kolar	11
Bidar	4	Koppal*	4
Bijapur	9	Mandya	7
Bellary	6	Mysore	11
Chitradurga	9	Mangalore	4
Chickmagalur	8	Karwar	1
Coorg	3	Riachur	5
Dharwar	6	Shimoga	10
Gulburga	10	Puttur*	3
Haveri*	7	Tumkur	10

* Not a District

Primary Land Development Banks — Loans and Recoveries

(Rs. in thousands)

District	No. of Societies	Advanced	Recovered	Out-standing	Overdue
1. Bangalore	1	74	2	4,69	84
2. Bangalore II	9	12,37	3,27	47,09	3,02
3. Belgaum	9	3,73	98	1,04	91
4. Bidar	4	1,95	3	2,54	—
5. Bijapur	9	7,79	61	14,87	66
6. Bellary	6	10,13	3,10	39,86	1,48
7. Chitradurga	9	15,97	9,61	1,32,53	6,35
8. Chickmagalur	8	16,58	10,90	52,93	2,20
9. Coorg	3	7,40	1,61	31,23	1,70
10. Dharwar	6	8,64	1,33	19,06	54
11. Gulburga	10	5,48	19	8,97	1
12. Haveri	7	4,10	31	6,12	19
13. Hassan	8	17,48	4,10	82,40	2,52
14. Kolar	11	31,86	3,53	76,84	4,13
15. Koppal	4	5,10	30	10,63	—
16. Mandya	7	9,01	2,86	53,24	1,85
17. Mysore	11	1,02	3,42	42,36	3,41
18. Mangalore	4	3,07	78	12,95	35
19. Karwar	1	3,07	21	5,43	18
20. Raichur	5	2,72	14	4,79	1
21. Shimoga	10	20,03	4,78	77,58	2,40
22. Puttur	3	4,71	51	10,95	3
23. Tumkur	10	1,13,85	4,32	1,52,25	5,30
	155	3,06,89	56,91	9,00,35	38,09

The Mysore State Co-operative Marketing Society — General Details

(Year ending 30th June)

(Rupees in lakhs)

Sl. No.	Particulars	1961	1962	1963	1964	1965
1.	Members	2.58	2.87	2.88	3.57	3.58
2.	Share Capital	2.67	3.29	4.69	4.10	5.05
3.	Deposits	0.48	0.51	0.63	0.74	0.96
4.	Reserve and other funds	2.50	1.95	4.76	6.43	7.35
5.	Borrowings	2.97	4.14	1.03	0.90	0.79
6.	Working Capital	8.20	10.23	11.11	12.87	14.18
7.	Purchases	4,84.70	1,45.34	4,78.99	4,82.64	5,47.69
8.	Sales	3,83.11	2,56.42	3,47.95	4,28.18	6,10.36
9.	Net profits	1.13	—	—	—	—
10.	Losses	—	1.04	4.40	7.30	12.72

Primary Marketing Co-operative Societies — General Details

(Year ending 30th June)

(Rupees in lakhs)

Sl. No.	Particulars	1961	1962	1963	1964	1965
1.	No. of Societies	257	259	268	245	254
2.	Membership	1,26,728	1,32,715	1,56,982	1,53,917	1,65,773
3.	Share capital	86.32	100.01	117.66	114.53	318.85
4.	Reserve and other funds	85.84	99.76	114.77	125.30	137.18
5.	Borrowings	2,83.84	2,74.59	3,15.12	3,42.81	7,40.74
6.	Working capital	3,56.00	4,74.36	5,47.55	6,12.64	11,77.11
7.	Loans issued	2,72.39	3,63.98	4,96.65	3,20.32	6,32.18
8.	Loans recovered	2,31.34	3,44.92	5,18.69	3,10.46	6,28.75
9.	Loans outstanding	1,65.81	1,84.87	1,62.85	1,72.71	1,73.85
10.	Loans overdue	15.63	40.35	46.01	37.73	30.88
11.	Purchases as owners	7,69.34	10,89.91	8,55.61	12,45.23	18,18.82
12.	Sales as agents and owners	11,89.86	15,48.67	15,59.17	22,74.27	27,47.95
13.	Net profit	18.83	20.96	20.90	24.63	34.84

Types of Primary Marketing Societies

(As on 30-6-1965)

1. State Marketing Society	1
2. Central Marketing Societies	3
3. Central Cotton Marketing Co-operative Society	1
4. Primary Cotton Marketing Co-operative Societies	2
5. Fruits and Vegetables Marketing Co-operative Societies	26
6. Central Areca Marketing Co-operative Society	1
7. Primary Areca Marketing Co-operative Society	8
8. Tobacco Marketing Co-operative Society	1
9. Coconut Marketing Co-operative Societies	2
10. General purpose Marketing Co-operative Societies	204
11. Specialised in Agricultural Marketing	6
Total	255

Storage Facilities available to the Credit and Marketing Societies

(As on 30-6-1965)

Sl. No.	Plan	Small sized or Rural Godown Alloted	Capacity in tons	Assistance given by Government	Completed	Medium sized godown	Completed
1	2	3	4	5	6	7	8
1.	II Plan	475	100	Rs. 47.50 (Lakhs)	403	166	150
2.	III Plan	711	—	Rs. 51.46 (Lakhs)	224	118	34

(As on 30-6-1965)

1. No. of Societies owning Godowns :	
Marketing	183
Agricultural Credit Societies	1,699
2. No. of Godowns owned :	
Marketing	597
Agricultural Credit Societies	1,818
3. No. of Godowns hired :	
Marketing	597
Agricultural Credit Societies	1,182

Co-operative Sugar Factories — General details

(Years ending 30th June)

(Rupees in Lakhs)

Sl. No.	Particulars	1961	1962	1963	1964	1965
1.	No. of Factories	8	8	8	8	8*
2.	Members	13,803	15,509	21,023	21,968	22,731
3.	Share Capital	106.53	127.24	130.69	143.80	163.77
4.	Reserve and other funds	97.19	115.48	147.71	178.26	189.25
5.	Borrowings	312.66	396.48	315.43	249.27	414.69
6.	Working Capital	516.38	639.20	593.83	571.33	767.71
7.	Loans issued	12.32	23.97	35.06	70.31	2.43
8.	Loans recovered	9.76	26.57	48.30	8.80	50.73
9.	Loans outstanding	35.98	38.05	24.81	86.32	38.02
10.	Loans overdue	3.51	4.58	—	0.04	0.04
11.	Sugarcane crushed (tons in lakhs)	2.78	4.32	3.63	2.92	4.03
12.	Sugar produced	0.30	0.48	0.44	0.34	0.64
13.	Net profit	0.08	17.96	14.83	12.15	7.67
14.	Losses	0.97	0.49	0.49	—	8.12

*Out of the 8 registered Societies (FACTORIES), only 3 have gone into production.

Location of Sugar Factories

1.	Pandavapura, Katumandala Doddi in Mandya District	2
2.	Kampli and Kamalapura in Bellary District	2
3.	Mugulkhan Hobli and Sankeshwar in Belgaum District	2
4.	Gowribidanur in Kolar District	1
5.	Haliked in Bidar District	1
6.	Hiriyur in Chitradurga District	1
7.	Kollegal in Mysore District	1
	TOTAL	10
	No. of factories gone into production	3
	No. of producers members	20,057
	Cane crushed and sugar produced in metric tons (1964-65)	
	Cane crushed	4,03,190
	Sugar produced	64,560

Processing Societies (other than Sugar Factories) — Type wise

30-6-1965

Sl. No.	Nature of Processing Units	Total	Assisted Financially	Gone into Production
1	2	3	4	5
1.	Paddy processing	30	30	20
2.	„	41	41	—
3.	Cotton ginning and processing	4	4	2
4.	Cotton ginning and Groundnut oiling	13	12	5
5.	Groundnut oiling and Paddy processing	1	1	1
6.	Cotton seed crushing	1	1	—
7.	Groundnut oil crushing	7	7	2
8.	Coffee curing	1	1	1
9.	Sugarcane crushing and Paddy processing	1	1	—
10.	Sugarcane crushing	4	3	3
11.	Cashew processing	2	1	1
12.	Cold storage	1	1	—
13.	Fruit processing	3	1	1
14.	Mango canning	1	1	—
15.	Pulses and Cotton ginning	1	1	—
16.	Tobacco curing	1	1	1
	TOTAL	112	107	37

Co-operative Lift Irrigation Societies — General Details

(Rs. in lakhs)

Sl. No.	Particulars	1961	1962	1963	1964	1965
1.	No. of societies	35	31	35	35	35
2.	Membership	1,792	1,726	2,057	1,917	1,933
3.	Share capital	2.44	2.37	2.62	2.92	2.96
4.	Working capital	12.27	12.30	13.27	13.88	14.20
5.	Area under command in acres	8,745	9,055	9,167	1,804	9,024
6.	Area brought under irrigation in acres	1,779	1,459	2,105	3,231	3,295

Location of Irrigation Co-operatives

1.	Belgaum	14
2.	Haveri	5
3.	Bijapur	2
4.	Mysore	4
5.	Coorg	7
6.	Shimoga	2
7.	Mandya	1

June ended 1965

Co-operative Farming Societies — General details

(Rs. in lakhs)

Sl. No.	Particulars	1961	1962	1963	1964	1965
1.	No. of societies	144*	82	194	310	391
2.	Membership	7,670	2,953	6,187	8,597	10,014
3.	Share capital	2.76	1.63	4.16	10.09	13.14
4.	Reserve and other funds	1.39	0.68	1.09	1.25	0.76
5.	Borrowings	9.57	6.77	15.37	28.27	31.80
6.	Working capital	13.72	9.08	20.62	39.61	45.70
7.	Fixed assets	7.68	5.79	11.30	24.05	28.33
8.	Coverage in acres :	—	—	—	—	—
	1. Commanded	28,657	16,891	26,752	52,869	56,093
	2. Cultivated	21,837	7,364	20,772	29,690	36,334

* includes better and tenant farming Co-operative Societies also.

	1961	1962	1963	1964	1965
1. Joint Farming	22	36	145	242	316
2. Collective	38	46	49	69	75
3. Better farming	36	—	—	—	—
4. Tenant	36	—	—	—	—

State and District Consumers Wholesale Stores — General Details

(June ended 1965)

(Rs. in lakhs)

	Total	Of which State partnered	No. of branches	No. of Members			Paid up Share			Reserve & other Funds
				Government	Institution	Individuals	Government	Institution	Individuals	
1	2	3	4	5	6	7	8	9	10	11
1. Federation of Consumers Wholesale Stores at State level.	1	1	Nil	1	13	—	3.00	1.25	—	—
2. District Wholesale Stores	13	13	Nil	13	1960	N.A.	N.A.	24.17	N.A.	15.31

	Borrowings	Working Capital	Purchases	Sales	Cost of Managerial	Profit		Loss		No. of stores without profit or loss
						No. of Stores	Amount	No. of Stores	Amount	
	12	13	14	15	16	17	18	19	20	21
1.	17.70	21.95	47.18	35.29	30.29	1	89	—	—	—
2.	83.46	1,22.94	6,61.50	6,63.55	13.55	11	5.91	2	1.05	—

Progress of Primary Consumers Co-operative Societies in Mysore

(Year ending 30th June)

(Rupees in lakhs)

Sl. No.	Particulars	1961	1962	1963	1964	1965
1.	No. of Societies	395	412	545	714	1096
	No. of branches	78	34	39	32	62
2.	Membership	9,741	1,10,110	1,43,934	1,57,944	2,20,435
3.	Share Capital	21.90	24.47	35.00	42.24	60.89
4.	Reserve and other funds	25.19	23.45	38.95	30.42	39.41
5.	Borrowings	31.04	30.90	34.82	50.21	84.96
6.	Working Capital	78.13	83.82	1,06.77	1,22.87	1,85.26
7.	Purchase	2,70.83	2,71.83	2,18.60	4,74.20	10,91.97
8.	Sales	9,90.55	2,75.43	2,00.00	5,33.62	11,85.79
9.	Net profit	5.65	5.73	6.68	1.31	11.21
10.	Losses	1.94	2.73	5.61	1.31	3.93

Non-Agricultural Credit Societies — General Details

(Year ending 30th June)

(Rupees in thousands)

Sl. No.	Particulars	1961	1962	1963	1964	1965
1.	No. of Societies	1,061	1,083	1,108	1,146	1,212
2.	Membership	3,35,000	5,19,000	5,49,000	5,65,000	5,88,000
3.	Share Capital	2,37,42	2,64,67	3,00,46	3,23,11	3,30,33
4.	Deposits	6,78,70	7,36,28	6,44,20	7,17,06	9,41,63
5.	Reserve and other funds	1,76,18	1,76,51	1,83,46	1,89,07	2,16,98
6.	Borrowings	99,77	1,01,85	1,68,05	1,92,80	2,04,21
7.	Working Capital	11,92,07	12,79,31	12,96,17	14,22,11	16,93,15
8.	Loans issued	11,19,26	12,96,70	12,96,70	13,75,69	18,07,23
9.	Loans recovered	10,14,64	12,33,45	12,78,73	13,32,89	15,66,10
10.	Loans outstanding	7,76,28	8,39,53	8,43,63	8,86,43	11,27,56
11.	Overdues	91,94	1,04,42	1,55,48	1,25,86	1,32,22
12.	Profit	20,60	21,63	21,30	24,22	38,44

Non-Agricultural Credit Societies — Type wise

June ended 1965

Sl. No.	Name of the District	Urban Banks	Employees C. S.	Others	Total
1	2	3	4	5	6
1.	Bangalore I Circle	15	52	85	152
2.	Bangalore II Circle	3	45	45	93
3.	Belgaum	40	65	—	105
4.	Bellary	2	21	3	26
5.	Bidar	1	27	—	28
6.	Bijapur	17	46	8	71
7.	Chitradurga	7	32	17	56
8.	Chickamagalur	1	14	4	19
9.	Coorg	—	—	16	16
10.	Dharwar	21	44	24	89
11.	Gulbarga	13	20	—	33
12.	Haveri	22	15	—	37
13.	Hassan	11	16	14	41
14.	Kolar	2	29	23	54
15.	Koppal	—	—	7	7
16.	Mandya	—	15	11	26
17.	Tumkur	6	20	45	71
18.	Mysore	10	11	108	129
19.	Mangalore	2	23	26	51
20.	North Kanara (Karwar)	9	13	7	29
21.	Raichur	8	5	4	17
22.	Shimoga	8	17	33	58
23.	Puttur	4	—	—	4
Total		202	530	480	1,212

Mysore State Co-operative Housing Corporation — General Details

(Year ending 30th June)

(Rupees in lakhs)

Sl. No.	Particulars	1961	1962	1963	1964	1965
1.	Membership	111	1,110	1,114	1,055	1,028
2.	Share Capital	3.83	4.19	5.44	5.86	6.15
3.	Borrowings	192.84	212.10	217.00	211.39	202.90
4.	Reserve and other funds	0.52	0.84	1.02	1.26	1.85
5.	Working Capital	197.19	217.93	223.46	218.51	210.90
6.	Loans issued	49.94	50.61	24.81	22.60	9.12
7.	Loans recovered	7.66	10.34	12.84	14.15	16.67
8.	Loans outstanding	165.19	205.46	217.43	225.55	218.55
9.	Net profit	0.24	0.40	0.42	0.38	0.39

Primary Co-operative Housing Societies — General Details

(Year ending 30th June)

(Rupees in lakhs)

Sl. No.	Particulars	1961	1962	1963	1964	1965
1.	No. of Societies	350	399	506	689	638
2.	Membership	36,605	46,222	66,071	86,305	99,868
3.	Share Capital	28.92	30.34	45.70	50.36	66.25
4.	Reserve and other funds	9.29	10.16	12.20	13.61	15.78
5.	Borrowings	3,66.02	1,93.37	2,35.34	2,50.14	2,74.25
6.	Working capital	4,04.23	2,33.87	2,93.24	3,14.11	3,56.29
7.	Loans issued	94.08	55.77	72.18	1,12.93	96.79
8.	Loans recovered	27.90	30.58	38.69	93.76	109.04
9.	Loans outstanding	1,76.66	2,01.25	2,35.34	2,54.56	2,42.31
10.	Loans overdue	14.76	16.44	25.85	36.72	45.85
11.	Net profit	5.03	3.06	4.38	2.93	5.00
12.	Losses	1.46	0.76	5.82	1.04	1.50

Fisheries Co-operatives—General Details

(Rs. in lakhs)

Sl. No.	Particulars	1961	1962	1963	1964	1965
1.	No. of Societies	70	77	93	96	100
2.	No. of members	10,155	15,579	19,265	19,604	19,194
3.	Paid up capital	3.86	5.00	6.16	7.30	7.46
4.	Reserve	1.16	1.66	1.65	1.74	1.88
5.	Borrowings	4.19	14.34	18.46	14.67	13.70
6.	Working capital	10.43	21.00	26.72	23.71	23.04
7.	Cash value	0.05	0.78	2.35	2.29	72
8.	Sales value	0.96	0.85	3.29	3.30	1.71
9.	Profits	0.29	0.31	55	71	66
10.	Losses	0.13	0.19	—	21	17

Co-operative Spinning Mills — General Details

(Rs. in Thousands)

Sl. No.	Particulars	1963	1964	1965
1.	No. of Mills	5	5	5
2.	No. of Members	2,249	2,583	4,108
3.	Paid up Share Capital	58,94	60,60	73,43
4.	Reserve and other funds	63,99	45,39	54,93
5.	Borrowings	70,72	85,54	91,27
6.	Working Capital	1,93,65	1,91,53	2,20,81
7.	Profits	45	4,39	6,71
8.	Losses	3,81	3,02	11,58

Location of Spinning Mills

1. Karnataka Co-operative Textile Mills, Hubli
2. Bijapur Co-operative Spinning Mills, Bijapur
3. Bagalkot Co-operative Spinning Mills, Bagalkot
4. Raichur Co-operative Spinning Mills, Raichur
5. Belgaum Co-operative Spinning Mills, Belgaum

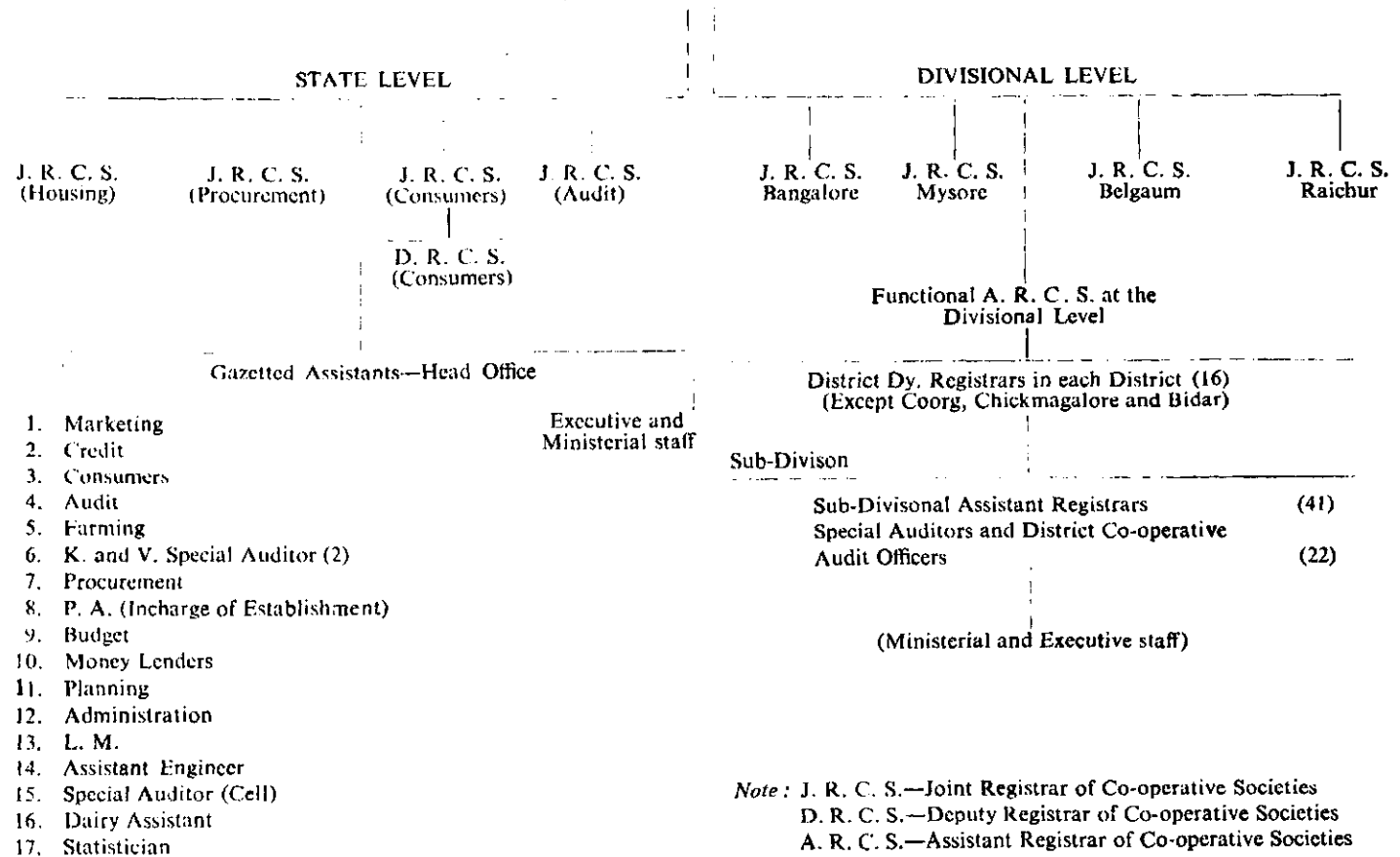
The Mysore State Co-operative Union

Progress of Member-Education Programme

Year	No. of Units working	Classes conducted for Hon./Partly paid Secretaries, Managers, Prospective leaders for four weeks		Classes conducted for M. C. Members & Prospective Members for five days		Members and Potential members trained	Total No. trained
		No. of Classes 3 (a)	No. of trained (3) b	No. of Classes 4 (a)	No. of trained 4 (b)		
1	2	3 (a)	(3) b	4 (a)	4 (b)	5	6
60-61	19	11	286	100	2,260	7,361	9,867
61-62	19	12	229	134	2,527	10,044	12,830
62-63	30	26	501	222	3,947	15,738	20,186
63-64	39	33	774	326	8,247	12,409	21,430
64-65	51	45	1,108	723	14,548	—	15,656

ADMINISTRATIVE SET-UP OF CO-OPERATIVE DEPARTMENT

REGISTRAR (I. A. S. Cadre)



Statement showing the Types of Co-operative Societies in Mysore State as on 30-6-1965 with General Details

(Rupees in thousands)

Sl. No.	Types of Societies	No. of Societies	Membership	Share Capital	Deposits	Reserve and other funds	Borrowings	Working capital	LOANS			Overdue	Profit	Loss
									Issued	Recovered	Balance			
	1	2	3	4	5	6	7	8	9	10	11	12	13	14
1.	State Co-operative Bank	1	62	1,72,87	5,08,02	55,43	12,35,12	19,71,44	25,47,43	21,68,86	18,10,26	7,34	16,60	—
2.	District Co-operative Central Bank	19	17,662	4,78,87	15,50,38	1,20,44	16,94,49	38,44,18	54,86,91	18,32,96	30,55,11	6,60,01	39,56	—
3.	State Industrial Co-operative Bank	1	201	50,70	14,87	10,68	1,38,79	21,504	64,66	22,51	1,36,23	63,58	1,88	—
4.	District Industrial Co-operative Banks	19	8,576	20,62	28,44	4,27	74,34	1,27,67	1,14,88	64,20	6,79,02	11,29	72	—
5.	Primary Agricultural Credit Co-operative Society	8,741	14,91,000	6,96,78	11,64,28	2,36,69	18,16,15	29,13,90	17,80,36	17,14,69	21,70,31	8,49,16	87,85	29,57
6.	Grain Banks	884	61,651	9,67	1,49	23,64	1,53	36,33	11,41	10,10	20,21	11,32	1,11	9
7.	Primary Non-Agricultural Co-operative Societies	1,212	5,88,000	3,30,33	9,41,63	2,16,98	2,04,61	16,93,55	18,07,23	15,66,10	11,27,56	1,32,22	38,44	3,76
8.	Central Land Development Bank	1	152	90,76	1,42	24,15	10,93,67	12,10,00	2,44,04	53,49	9,31,89	1,29	3,74	—
9.	Primary Land Mortgage Banks	155	1,83,074	71,60	1,70	11,34	9,13,06	9,97,70	3,06,89	56,91	9,00,35	38,09	2,93	3,72
10.	MARKETING SOCIETIES													
(a)	General purpose Marketing	204	1,46,058	2,96,78	37,61	1,12,13	5,96,64	10,43,16	3,79,68	3,86,30	1,15,72	28,00	30,27	2,10
(b)	State Marketing	1	358	5,08	96	7,35	79	14,18	—	—	—	1	—	12,72
(c)	Central Marketing	3	798	3,30	6	2,63	9,69	15,68	4,06	38	4,24	—	70	9
(d)	Cotton Marketing	1	5	1,30	3	34	6	1,73	—	—	13,84	—	17	—
(e)	Cotton Primary Marketing	2	367	10	—	—	—	10	—	—	—	—	—	—
(f)	Fruits and Vegetables Marketing	26	3,356	2,62	47	4,16	4,01	11,26	2,85	2,84	1,85	59	29	5
(g)	Central Areca Marketing	1	20	37	—	1	—	38	—	—	2	—	1	—
(h)	Primary Areca Marketing	8	9,001	15,54	18,86	18,32	51,79	1,04,54	2,26,84	2,26,22	23,03	1,13	3,19	25
(i)	Tobacco Marketing	1	322	62	4	—	28	94	—	11	37	12	2	—
(j)	Cocoon Marketing	2	287	4	—	10	—	11	—	—	1	1	—	—
(k)	Others specialised agricultural commodities	6	4,736	3,15	3,01	2,47	8,36	16,99	12,02	12,90	10,41	1,02	7	—
11.	Sugarcane supply Co-operative Societies	5	515	7	—	2	14	23	—	7	7	3	—	1
12.	Milk supply Co-operative Societies	330	28,491	16,04	—	1,74	16,07	33,85	7,08	4,22	15,43	9,55	78	47
13.	Milk supply Unions	3	196	10	—	22	—	32	1	—	1	1	—	5
14.	LIVE STOCK SOCIETIES													
(a)	Ghee	1	15	(less than Rupees five hundred)				—	4	—	—	—	—	—
(b)	Poultry	3	250	4	—	—	—	—	4	—	—	—	—	—
(c)	Sheep breeding	1	433	4	—	—	—	—	—	—	—	—	—	—

(Continued)

(Amount in thousands)

Sl. No.	Types of Societies	No. of Societies	Membership	Share Capital	Deposits	Reserve and other funds	Borrowings	Working Capital	LOANS			Overdue	Profit	Loss
									Issued	Recovered	Balance			
	1	2	3	4	5	6	7	8	9	10	11	12	13	14
15.	Joint Farming	316	6,865	11,17	—	28	25,55	37,00	1,43	55	3,62	73	1,33	2,01
16.	Collecting Farming Societies	75	3,149	1,97	—	48	6,25	8,70	27	78	65	38	—	—
17.	Irrigation Co-operative Societies	35	1,933	2,96	—	2,23	9,01	14,20	—	—	—	—	73	36
18.	Cotton Ginning & Processing Societies	3	1,693	5.12	—	1,16	6,03	12,31	9,53	10,27	1	1	17	11
19.	Sugar Factories	8	22,731	1,63,77	—	1,89,25	4,14,69	7,67,71	2,43	50,73	38,02	4	7,67	8,12
20.	Agricultural Processing Co-operative Societies	20	3,029	30,80	—	14,54	40,42	85,76	9,69	5,50	7,72	8	70	1,96
21.	Other Co-operative Societies													
	(A) Agricultural	135	16,642	30,00	—	5,09	6,65	14,74	4	2,49	1,17	12	29	6
	(B) Non-Agricultural	93	13,408	10,02	—	11,20	25,74	46,69	13,29	33	15,22	15	1,36	1,40
22.	CONSUMER CO-OPERATIVE SOCIETIES													
	(a) Federation	1	14	425	—	—	17,70	21,95	—	—	—	—	89	—
	(b) Central Wholesale Stores	13	1,973	24,17	—	15,31	83,46	1,22,94	—	—	—	—	5,91	1,05
	(c) Primary Consumers' Co-operative Societies	1,096	2,20,435	60,89	—	39,41	84,96	1,85,26	—	—	—	—	11,21	3,93
23.	HOUSING													
	(a) Housing Corporation	1	1,028	6,10	—	1,85	2,02,90	2,10,90	9,12	16,67	2,18,33	15,96	39	—
	(b) Primary Societies	639	99,868	66,25	—	15,78	2,74,26	3,56,29	96,79	1,09,04	2,42,31	45,85	5,00	1,60
24.	WEAVERS' CO-OPERATIVE SOCIETIES													
	(a) Central Co-operative Societies	5	836	1,62	—	1,26	3,31	6,19	—	—	31	—	—	—
	(b) Primary Co-operative Societies	807	1,23,637	41,31	14,14	48,32	1,41,51	2,45,28	—	—	42,18	12,72	19,09	7,55
25.	Industrial Co-operative Societies	1,795	2,13,534	66,86	13,97	36,35	2,05,10	3,22,88	—	—	97,57	49,94	4,96	9,11
26.	Spinning Mills	5	4,108	73,43	1,18	54,93	91,27	2,20,81	—	—	—	—	6,71	11,58
27.	Fisheries Co-operative Societies	100	19,893	7,46	—	1,88	13,70	23,04	5,94	5,64	15,02	5,70	66	17
28.	State Co-operative Union	1	32	—	—	—	—	—	—	—	—	—	—	—
29.	District Co-operative Union	19	1,510	—	—	—	—	—	—	—	—	—	—	—
30.	Supervisor Union	132	3,204	—	—	—	—	—	—	—	—	—	—	—
	Total	16,930	33,12,108	28,48,59	33,02,56	12,92,43	95,11,83	1,69,55,41	1,31,44,88	1,13,25,36	1,10,98,07	19,46,42	2,95,44	1,01,89

Sl. No.	Types of Societies	No. of Societies	Membership	Share Capital	Deposits	Reserve and other funds	Borrowings	Working Capital
	1	2	3	4	5	6	7	8
15.	Joint Farming	316	6,865	11,17	—	28	25,55	37,00
16.	Collecting Farming Societies	75	3,149	1,97	—	48	6,25	8,70
17.	Irrigation Co-operative Societies	35	1,933	2,96	—	2,23	9,01	14,20
18.	Cotton Ginning & Processing Societies	3	1,693	5.12	—	1,16	6,03	12,31
19.	Sugar Factories	8	22,731	1,63,77	—	1,89,25	4,14,69	7,67,71
20.	Agricultural Processing Co-operative Societies	20	3,029	30,80	—	14,54	40,42	85,76
21.	Other Co-operative Societies							
	(A) Agricultural	135	16,642	30,00	—	5,09	6,65	14,74
	(B) Non-Agricultural	93	13,408	10,02	—	11,20	25,74	46,69
22.	CONSUMER CO-OPERATIVE SOCIETIES							
	(a) Federation	1	14	425	—	—	17,70	21,95
	(b) Central Wholesale Stores	13	1,973	24,17	—	15,31	83,46	1,22,94
	(c) Primary Consumers' Co-operative Societies	1,096	2,20,435	60,89	—	39,41	84,96	1,85,26
23.	HOUSING							
	(a) Housing Corporation	1	1,028	6,10	—	1,85	2,02,90	2,10,90
	(b) Primary Societies	639	99,868	66,25	—	15,78	2,74,26	3,56,29
24.	WEAVERS' CO-OPERATIVE SOCIETIES							
	(a) Central Co-operative Societies	5	836	1,62	—	1,26	3,31	6,19
	(b) Primary Co-operative Societies	807	1,23,637	41,31	14,14	48,32	1,41,51	2,45,28
25.	Industrial Co-operative Societies	1,795	2,13,534	66,86	13,97	36,35	2,05,10	3,22,88
26.	Spinning Mills	5	4,108	73,43	1,18	54,93	91,27	2,20,81
27.	Fisheries Co-operative Societies	100	19,893	7,46	—	1,88	13,70	23,04
28.	State Co-operative Union	1	32	—	—	—	—	—
29.	District Co-operative Union	19	1,510	—	—	—	—	—
30.	Supervisor Union	132	3,204	—	—	—	—	—
	Total	16,930	33,13,108	28,48,59	33,02,56	12,92,43	95,11,83	1,69,55,41