



GOVERNMENT OF ORISSA

THIRD ALL-INDIA EDUCATIONAL SURVEY

**SOME  
IMPORTANT FINDINGS ON  
SCHOOL EDUCATION IN ORISSA**

**DIRECTORATE OF PUBLIC INSTRUCTION  
STATE EDUCATIONAL SURVEY UNIT  
ORISSA, BHUBANESWAR**

# Contents

Page

1. Education in Orissa forges ahead		
2. Messages & Instructions		
3. Foreword		
4. Introduction		
5. Personnel of the Third Educational Survey		
6. Historical Background and the Setting	..	1
7. Important Findings of the Third Survey	..	4
8. Habitations with Schooling Facility	..	6
9. Habitations without Schooling Facility	..	7
10. Population Served by Primary Schools	..	7
11. Population Served by Middle Schools	..	8
12. Population Served by Secondary Schools	..	9
13. Distribution of Schools in the Districts	..	9
14. Educational Facilities in Habitations with Scheduled Tribe Population.		10
15. Educational Facilities in Habitation with Scheduled Caste Population.		10
16. Enrolment of Students	..	11
17. Districtwise enrolment at Primary stage	..	12
18. Wastage at Primary stage	..	12
19. School Community Co-operation	..	13
20. Students Owning Text Books	..	14
21. TABLES (Nos. 2—28)	..	16
22. The Educational Survey in Action	..	59
23. Annexures	..	75



# ***EDUCATION IN ORISSA FORGES AHEAD***

## ***Implementation of 20-point Economic Programme of the Prime Minister***

The Prime Minister's 20-point Economic Policy Programme promises a new era of economic peace, progress and prosperity in the country. ORISSA has joined this momentous march and the State's popular Ministry headed by Shrimati Nandini Satpathy, has set the wheels of progress in motion by a well-defined, bold and imaginative policy.

In this march towards prosperity and peace, Education claims a pride of place as it is not only a beautiful flower of economic development, but also its seed. A number of welfare measures in the field of Education is now under vigorous implementation and the weaker sections of the community have in fact been given a "New Deal".

The following bold measures will speak for themselves—

- (a) Text book Banks have already been opened in 776 High Schools and 314 M. E. Schools at a cost of Rs. 10.51 lakhs.
- (b) Text book Banks have also been opened in Government and non-Government Colleges as well as in the three Universities of the State.
- (c) 700 meritorious students have been given financial assistance for admission in the Colleges at a total cost of Rs. 70,000.
- (d) 4,624 metric tonnes of plain writing paper have been supplied to students reading in Schools and Colleges at reasonable price.
- (e) Students residing in hostels and approved lodging houses have been given essential commodities at controlled prices.
- (f) A sum of Rs. 5,62,500 has been sanctioned for providing free text books and writing materials to 90,000 students reading in Primary and M. E. Schools. 32,024 students at the Primary and M. E. stages have already been given free text books and writing materials.
- (g) A sum of Rs. 3,37,295 lakhs has been distributed amongst 22,642 poor students reading in Government High Schools for purchase of books and writing materials at the rate of Rs. 15 per student.
- (h) 11,319 girl students in the Primary and Middle School stages have been provided with free uniforms involving Rs. 1,13,190.

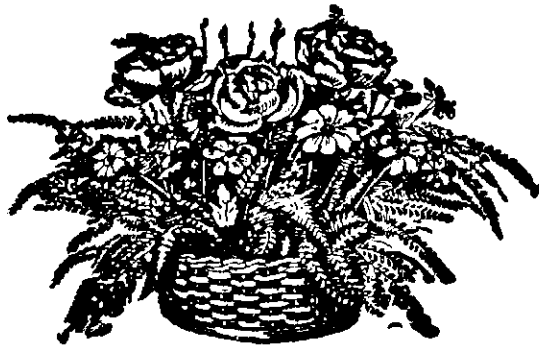


- (i) 1,566 girl students belonging to Scheduled Tribes and Scheduled Castes and other weaker sections have already been awarded attendance scholarships at the rate of Rs. 30 each. Besides, award of 3,000 more of such scholarships are contemplated during the current academic session.
- (j) Number of free studentships has been increased from 10 to 25 per cent and 10 to 15 per cent in M. E. and High Schools respectively.

### *Progress under Plan Programmes*

- (i) 1,000 new Primary Schools have been opened in backward areas and hard core pockets of the different districts in the State.
- (ii) 3,500 three-class schools have been up-graded to five-class schools with appointment of 4,500 teachers.
- (iii) 875 new M. E. Schools have been opened in hard core pockets of the districts.

- (iv) 345 SITE Centres have been set up in the districts of Dhenkanal, Phulbani and Sambalpur.
- (v) Three new Government Girls' High Schools have been opened in the backward districts.
- (vi) Two new Government Colleges for women have been started in the districts of Dhenkanal and Mayurbhanj.



**MESSAGES**

*FROM THE MINISTER, EDUCATION  
& THE DEPUTY MINISTER, EDUCATION*

**AND INSTRUCTIONS**

*FROM THE CHIEF SECRETARY TO THE DISTRICT  
COLLECTORS FOR SUCCESSFUL IMPLEMENTATION  
OF THE SURVEY OPERATION IN ORISSA.*



BHUBANESWAR  
30th September 1974

I am happy to know that the State Headquarters Educational Survey Unit, Bhubaneswar, jointly in collaboration with the N. C. E. R. T., New Delhi, is holding its Second State Level Seminar on the 30th September 1974 at Puri for imparting necessary training to the District Survey Officers for preparation of Block and District Tables under the programme of the Third All-India Educational Survey. I take this opportunity to welcome you all and hope you will deliberate on the problems, you are facing, in your specialised field of activity in building up a reliable and dependable Educational Statistical base for realisation of the Fifth Five-Year Plan's objectives and Programmes.

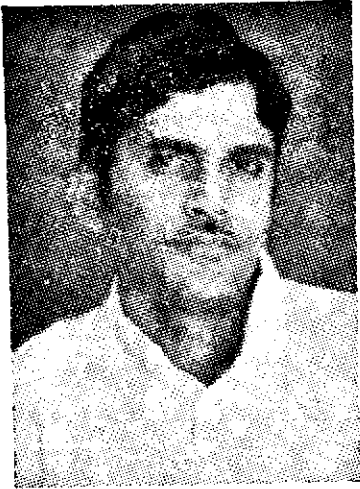
It goes without saying that any meaningful planning for effecting Educational Change, has to be based on reliable statistics. Unfortunately, the statistical data available for education in our country, are very meagre and sometimes it is difficult to depend upon them which ultimately leads to incorrect conclusions. As such, preparation of Block and District Level Plans for determining strategy, policy and plans must be based on accurate and dependable statistical base if it is to be operational.



I would, therefore, request the educational administrators in general and the District Survey Officers in particular to keep in view the above responsibility and prepare the Block and District Tables carefully and scientifically so that the information can be utilised productively for efficient educational planning, monitoring of the execution of the plan programmes and realisation of plan objectives.

With these words, I wish the Seminar all success.

JADUNATH DAS MOHAPATRA  
Minister, Education,  
Tourism & Cultural Affairs, Orissa.



BHUBANESWAR

26th September 1974

A desire to "revolutionise" the entire system of education has of late been the most professed goal of educational reconstruction in the country. This is because the educational system that grew up under the British Rule did not cater to the national aspirations. Therefore, the need of the hour is to change the system of education to suit the needs of the present time, needs of the community and the needs of the society. This precisely, being the aim and objectives of education, it may be emphasised that educational mapping on an effective and systematic lines has been the crying need of the present day society. Unless, education is integrally related to the social, economic, political and cultural life of the nation, the progress of our country may be retarded. As such, educational planning of the State has to be based upon a clear blue-print and has to be ultimately guided by a perspective plan of long-term educational development linked with man-power requirements and economic development. This is more so because education has now become the largest organised human activity in our country and about 7 crores of students might be sitting together either learning their lessons or otherwise engaged in educational activities. Truly speaking, there is no other human activity where such large numbers are under one umbrella. Therefore, the whole of our planning programme needs be formulated and planned by a well-defined policy

and creative imagination which can anticipate the needs, and trends of development in the coming 15 years keeping in view our limited resources. In other words, we have to take educational planning more seriously than we have been doing so far so that we may avoid the frustration that results from our achievements that constantly fall far short of the targets.

SHREE JAGANNATH PATNAIK  
Deputy Minister,  
Education & Youth Services, Orissa

**GOVERNMENT OF ORISSA**  
**EDUCATION AND YOUTH SERVICES DEPARTMENT**

No. 17629 (13)—VIE/CP.-39/74-Pt.-E.

FROM

**SHRI M. RAMKRISHNAYA, I.A.S.,**  
**CHIEF SECRETARY TO GOVERNMENT**

TO

**ALL COLLECTORS**

Dated the 2nd July 1974

**SUBJECT—**Operation of the Third Educational Survey in the State—Co-operation of the Subdivisional, Block and District level officers of the concerned Departments in the programme.

**SIR,**

ON the recommendation of the Central Advisory Board of Education, the Government of India in the Ministry of Education and Social Welfare have launched the Third All-India Educational Survey in the country in collaboration with the State Governments. The main objective of this Survey is to collect all essential data and information at all stages of Education which will be helpful for proper educational planning and policy-making on all important issues during the Fifth Five-Year Plan period. The present Survey, in fact, covers the entire educational system, all existing institutions, all stages and categories of education not only to have a comprehensive picture of the total system of education in the country, but also to have a meaningful and proper educational planning, development and qualitative improvements in the priority areas that the country has in view in the 5th Plan period. It covers as many modalities and activities as possible.

2. In Orissa, the Government in the Education and Youth Services Department have undertaken this task of Third Educational Survey in the State as a part of the Third All-India Survey programme. The Director of Public Instruction (H. E.) is in the overall charge of the entire survey operation in the State. The work connected with the survey is time-bound and needs to be completed in a very record time as per the target fixed by the Government of India, Ministry of Education and Social Welfare. In view of the urgency and importance attached to the programme, the Director of Public Instruction (H. E.) has undertaken all the preliminaries connected with the task. Training of Block level Education Officers in the different districts in the State has already been started and the same would end by the 1st week of July. Different kinds of Information Blanks have also been supplied to the concerned District Survey Officers in the State for collection of necessary data and information on the subject.

3. The agencies for undertaking these urgent tasks are the Sub-Inspectors of Schools and the officers of the Department put on this job. They would undertake the survey throughout the State in all the districts which would start from middle of July, 1974. It is visualised that this work will continue till the middle of August 1974. The work during this period is very crucial. The magnitude of the task needs active co-operation, help and support of the Collectors, Subdivisional Officers, Block Development Officers, Tahasildars, Executive Officers of N. A. Cs. and Municipalities and District Welfare Officers whenever required.

4. I would, therefore, request you to assist and co-operate with the field survey officers of the Education Department and issue necessary instructions to others in the Districts so that this time-bound and state-wide programme of survey of national importance is completed in time and with success.

Yours faithfully

M. RAMKRISHNAYA,  
*Chief Secretary to Government*

---

MEMO. No. 17630(5)-E.

*Dated the 2nd July, 1974*

COPY to Director of Public Instruction (H. E.)/Director of Public Instruction(S)/all the three Revenue Divisional Commissioners for information.

M. RAMKRISHNAYA  
*Chief Secretary to Government*

## FOREWORD

TIMELY availability of reliable, adequate and up-to-date statistical data is of vital importance for any decision-making and development planning. The experience gained in the implementation of educational plans and programmes during the past years has brought to the fore the urgent need for them. This is because, the statistical data available on education are very meagre and sometimes out of date to serve any useful purpose. Even if the data are available, meaningful analysis of the data is seldom undertaken. This, sometimes, makes the whole statistics collected only of historical importance without any impact on our plan-formulation and decision making purposes.

It is significant to note that for formulating programmes of immediate operational significance, the need for time-bound special studies and surveys with substantial research support has now acquired increasing importance in the field of Educational Planning and Administration. Because, a mere quantitative increase in the system will not be able to meet the needs of the new challenges. As such, the efforts of the State Educational Survey Unit in bringing out a meaningful synoptic view of the major findings of the Third All-India Educational Survey in the form of a booklet, is a welcome step in the right direction.

I am sure, the Educational Planners, the Administrators and the Educationists, will find this booklet extremely useful and rewarding in formulation and implementation of plans and programmes of importance in priority sectors of education in the State. I also hope that corrective action, wherever urgently called for, can be planned on the basis of the findings of the Survey.

I wish to take this opportunity to express my thanks to Dr. D. C. Misra, D. P. I. (H. E.), Orissa, the *ex officio* Director, Third All-India Educational Survey, for the sincerity and vision with which he carried out the whole assignment in time.

Dr. Sarat Chandra Dash, the Vice-Principal of the State Institute of Education, Bhubaneswar and Shri Braja Mohan Das, the Assistant State Survey Officer of the Directorate, shouldered the major responsibility for preparing the manuscript of this booklet under the guidance of Dr. Misra in a very short period. I thank them very much for their willing and devoted efforts.

H. N. DAS MOHAPATRA

Secretary to Government

Education and Youth Services Department

Bhubaneswar

The 21st January, 1976



Shri H. N. Das Mohapatra I. A. S. Secretary, Education, studies the draft report of the synopsis



Dr. D. C. Mishra, D. P. I. (H. E.), & *ex officio* Director, Third All-India Educational Survey, Orissa

## INTRODUCTION

IN THE FOLLOWING PAGES, the State Educational Survey Unit, attached to the Directorate, offers an analysis of some important findings of the " STATE TABLES " of the Third All-India Educational Survey, undertaken by the Government of India, in collaboration with the State Government. The Third Survey being very large and comprehensive, the process of presentation of all results will take some time. But since the coverage of the Third Educational Survey has been more closely related to the plan and programmes of the Fifth Five-Year Plan, the immediate availability of the strategic findings of the present Survey has acquired a great urgency as we are now in the second year of the Plan period.

2. As a matter of fact, the present booklet is brought out with the above end in view. It will not only be of great help and interest to the educational planners, administrators and educationists, but also to the lay reader who is interested in the educational progress and development of the State. Orissa is perhaps the first State in the country that has taken concrete step to bring out a summary of the findings of the " State Tables " immediately after their compilation and tabulation of the data.

3. The two large scale enquiries that have so far been conducted in the field of School Education in the country are the First and Second All-India Educational Surveys.

Although two Surveys were conducted at an interval of more than eight years ( 1957—1965 ), yet the aim of both was to examine the extent of schooling facilities available in different areas and to suggest measures for removing the imbalances. While the First Survey did some spade-work, the second one laid the foundation of which future planning for location of schools had to be built up. In fact the Second Survey brought out the most important fact that it was high time to evolve suitable population distance criteria on the basis of which Primary, Middle and High Schools could be established in a planned manner in future. But unfortunately, the data collected in Second Educational Survey were not closely related to the requirements of the Fourth Five-Year Plan, an omission which has been avoided while planning and designing the Third Educational Survey



4. In 1973, the Ministry of Education and Social Welfare, Government of India, decided to have the Third All-India Educational Survey with much wider scope and coverage, compared to the first two Surveys, which were confined to the School Education only. The Third Survey, in fact, covers the entire Educational System, right from pre-Primary to University Education, and all types and categories of educational institutions, including technical and vocational ones. The objective is not only to have a comprehensive picture of the total system of education in the country, but also to initiate plans for development and qualitative improvement in the priority sectors of education during the current and future Plans. In addition to the items covered in the first two Surveys, the Third Survey also extends to Non-Formal Education, Tribal Education, and provision of facilities for the education of the weaker sections of the society.

5. The date of reference of the data collected is 31st December 1973. This is the first attempt to make such a comprehensive survey of the entire educational system in the country by the Government of India. The present Survey, in fact, is a big project and a number of agencies have been involved in this gigantic task of national importance. The N. C. E. R. T., is in charge of School Education, whereas, the University Grants Commission and the National Staff College for Education, are in charge of Higher Education and Survey of Educational Administration and Supervision. The Institute of Applied Manpower Research and the Department of Culture, have been entrusted to the Survey of Technical and Vocational Education and Cultural Statistics in the country. The N. C. E. R. T. bears the main burden of the Survey work in the country, as each and every habitation in India, from the point of view of existing schooling facilities, whether formal or non-formal, recognised or un-recognised, have been included under the programme.

6. It was decided to collect minimum data under the programme on a census and the rest of them on sample basis. It is also decided to get a part of the data processed mechanically through computers in view of the enormous amount of work involved in their processing.

7. In Orissa, the Government in the Education and Youth Services Department, have undertaken this task of conducting the Survey as part of the Third All-India Educational Survey Programme. The Survey work in Orissa started in April, 1974 and the data collection work began in full strength from the middle of July, 1974. On the basis of the data and

information collected through various schedules, the work on preparation and consolidation of Block and District Tables was completed by October, 1974 and March, 1975, respectively. The work of compilation and tabulation of the State Tables with reference to the District Tables was completed in October, 1975.

8. The entire Survey operation in Orissa, started in full strength under the able guidance and leadership of my predecessor, Prof. B. Das from March, 1974 to December, 1974. I am grateful to Prof. Das for undertaking the main burden of the Survey work in the State. I am also fortunate in having a band of dedicated and loyal officers, namely Shri G.N. Dash, the Deputy Director (Survey), Shri Braja Mohan Das and Shri N. Patnaik, the Assistant State Survey Officers, Shri P. C. Raut, Ex-District Survey Officer, Dhenkanal who worked hard and put in their best efforts for smooth conduct of the various task connected with Survey. I also record my deep appreciation for the work done by the Sub-Inspector of Schools, the District Survey Officers, the Circle Inspectors of Schools, the District Inspector of Schools and others who formed the backbone of the Survey work in the field and worked very hard in collecting and compiling the data and preparing the Block and District Tables in record time. I also thank the District Collectors and Block Development Officers for co-operation and help in this project of national importance.

9. Lastly, I must take this opportunity to express my gratitude to the Education Secretary, Shri H. N. Das Mohapatra, for his valuable guidance, co-operation, encouragement and unstinted support for successfully conducting this project. In fact, Shri Das Mohapatra has been the moving spirit behind many activities of this gigantic project and without his enthusiastic and constant help it would not have been possible to bring out this publication early.

10. I shall be failing in my duty if I do not place on record my deep appreciation of the valuable services rendered by Dr. S. C. Dash, Vice-Principal, State Institute of Education, Dr. S. C. Patnaik, Reader in Economics, Ravenshaw College, Cuttack, Shri Braja Mohan Das and Shri Niranjana Patnaik, Assistant State Survey Officers, Shri P. C. Raut, Lecturer in Education, Ravenshaw College, Shri Ramesh Chandra Dash, S. I. of Schools, Balangir and Shri Narayan Khatua, Junior Statistical Assistant, Khurda Educational District (Puri Circle). They have ungrudgingly taken up the responsibility for the analysis and presentation of data for this Booklet in a very short period.

I very much appreciate the initiative and interest taken by Shri Braja Mohan Das, the Assistant State Survey Officer for bringing out this publication. Last but not the least, my warmest thanks are due to Shri Sakti Prasad Misra, Director, Printing, Stationery and Publication, Orissa Government Press, Cuttack, his Deputy Director, Shri N. Mohapatra and the Press Staff for designing, planning and the personal interest taken in bringing out the publication at a very short notice.

11. The Booklet, I am sure, will prove extremely useful and rewarding to those for whom it is primarily meant.

**DEBENDRA CHANDRA MISHRA**

Director of Public Instruction (Higher Education),  
and *ex officio* Director  
Third All-India Educational Survey, Orissa

BHUBANESWAR  
The 19th January, 1976

# Personnel

Prof. B. Das	..	Director, Third All-India Educational Survey ( <i>ex officio</i> from March, 1974 to 31-12-1974.
Dr. D. C. Misra	..	Director, Third All-India Educational Survey ( <i>ex officio</i> from 1-1-1975.
Shri G. N. Dash	..	Deputy Director of Public Instruction (Educational Survey) from January, 1974 to 31-5-1975.
Shri Braja Mohan Das	..	Assistant State Survey Officer from 14-5-1974
Shri Niranjan Patnaik	..	Assistant State Survey Officer from 29-6-1974
Shri Chakradhar Behera, B.A., LL.B.		Steno. to Director
Shri Basant Kumar Kar	..	Assistant from February, 1974 to October, 1974
Abdul Ohide Khan	..	Steno. to D.D. P. I. (Survey) Now attached to the personnel of the State Educational Survey Unit.
Shri Gopabandhu Rout	..	Typist-cum-Clerk, March, 1974 to December, 1975
Kumari Swapnarani Mohanty	..	Typist from 27-12-1975

District Survey Officers		District		Code No. of the district
1. Shri J. D. Dandasena	..	Sambalpur	..	01
2. Shri B. K. Panigrahi	..	Sundargarh	..	02
3. Shri U. N. Mohanty	..	Keonjhar	..	03
4. Shri K. C. Dey	..	Mayurbhanj	..	04
5. Shri L. Acharya	..	Balasore	..	05
6. Shri A. K. Mahanty	..	Cuttack	..	06
7. Shri P. C. Rout	..	Dhenkanal	..	07
8. Shri C. R. Patnaik	..	Boudh-Khondmals (Phulbani)		08
9. Shri G. B. Dash	..	Balangir	..	09
10. Shri S. P. Mund	..	Kalahandi	..	10
11. Shri L. N. Patra	..	Koraput	..	11
12. Shri R. N. Panigrahi	..	Ganjam	..	12
13. Shri P. K. Satapathy	..	Puri	..	13

## Key-Personnel involved in the Preparation of the Present Report

Dr. Sarat Chandra Dash	.. Vice-Principal, State Institute of Education, Orissa, Bhubaneswar.
Dr. Shirish Chandra Patnaik	.. Reader in Economics, Ravenshaw College, Cuttack
Shri Braja Mohan Das	.. Assistant State Survey Officer, D. P. I's Office
Shri Niranjan Patnaik	.. Assistant State Survey Officer, D. P. I's Office
Shri Purna Chandra Raut	.. Ex.-District Survey Officer, Dhenkanal
Shri Ramesh Chandra Dash	.. Sub-Inspector of Schools, Balangir
Shri Narayan Khatua	.. Junior Statistical Assistant, Khurda Educational District ( Puri Circle ).

## Editorial Board for the State Third Educational Survey Report and the Report of the Survey of Educational Administration, Orissa

Secretary to Government of Orissa, Education and Youth Services Department, Bhubaneswar.	Chairman
Prof. B. Das	.. Director, State Institute of Education, Orissa, Bhubaneswar.
Dr. D. C. Misra	.. Director of Public Instruction ( Higher Education ) Orissa, Bhubaneswar.
Shri D. Panigrahi	.. Joint Director of Public Instruction ( Schools ), Orissa, Bhubaneswar.
Shri Choudhury U. N. Misra	.. Joint Secretary to Government, Finance Department
Shri H. P. Mohapatra, O.A.S. (1)	.. Special officer- <i>cum</i> -Deputy-Secretary, Education & Youth Services Department.
Prof. D. D. Jena	.. Deputy Director of Public Instruction ( Planning ) Orissa.
Shri B. B. Mishra	.. Deputy Director, T. & R. W. Department, Bhubaneswar.
Shri S. Rajangam, O.A.S. (1)	.. Research Officer- <i>cum</i> -Under-Secretary, P. & C. (Pl.) Department, Bhubaneswar.
Dr. Sarat Chandra Dash	.. Vice-Principal, State Institute of Education, Orissa, Bhubaneswar.
Shri Ramani Ranjan Das	.. Deputy Director of Public Instruction ( Schools ) Orissa, Bhubaneswar.
Shri Braja Mohan Das	.. Assistant State Survey Officer
Shri Niranjan Patnaik	.. Assistant State Survey Officer

## *Historical Background and the Setting*

The State of Orissa was first constituted as a separate province with effect from the 1st April, 1936. Prior to that date, the major part of the present State of Orissa formed a division of the Province of Bihar and Orissa. The southern portion comprising Ganjam and Koraput districts came from the erstwhile province of Madras. The province of Bihar and Orissa in its turn, was part of the province of Bengal before 1912.

On the formation of the separate province, parts of Madras, the Central provinces which were predominantly Oriya speaking were merged therein. Again with the merger of 24 princely States in the year 1948, the present State of Orissa took final shape. It now represents 5.9 p. c. of the area and 4.02 per cent of the population of India.

The State of Orissa is situated on the East coast of the Indian peninsula bounded by Lat. 17.5° N to 22.5° and Longitude 81.5°E to 87.5°E and extends over an area of 1,55,842 Sq. Kms. It has a common boundary with West Bengal in North East, Bihar in the North, Madhya Pradesh in the West and Andhra Pradesh in the South. The Calcutta-Madras coastal railway-link traverses the State along the coast and the Calcutta-Bombay railway link runs through the Northern districts. The State capital-Bhubaneswar is 400 Kms. from Calcutta and is connected with it by a daily flight of the Indian Air-lines Corporation over the Calcutta-Bhubaneswar-Vizag Air route.

The State is an extensive plateau which slopes generally into the coastal plain along the Bay of Bengal. The river Mahanadi, flowing West to East through the plateau, cuts into 2 definite parts, namely the Northern plateau and Eastern Ghats. The northern plateau comprises the districts of Mayurbhanj, Keonjhar, Dhenkanal (part) and Sundargarh. The Eastern Ghats extend over a wide area comprising the districts of Koraput, Phulbani, Kalahandi and Ganjam. The Central tract comprising Balangir, Sambalpur and Dhenkanal (part) districts is traversed by the mighty river Mahanadi and its tributaries. The coastal plains comprise the districts of Cuttack, Puri and Balasore. This is the most fertile alluvial deltatic stretch bordering on the Bay of Bengal.

The climate of Orissa is characterised by high temperature and medium to high rainfall. The temperature falls to 80 F. in January and rises to 101 F. in April. The mean annual rainfall in the state varies from 54'' to 63'' in different regions.

As a maritime State Orissa has a long coastal line of 400 Kms. along with the Bay of Bengal which includes a deep water sea port, Paradeep, with capacity for berthing bulk carriers.

Orissa consists of 13 districts. These districts are further sub-divided into 56 subdivisions, 314 Blocks and 3,824 Grama Panchayats. The total population of the State as per 1971 Census is, 21,944,615 (males 11,041,083 and females 10,903,532). The urban population was 1,435,395 and the rural population 20,099,220. These teeming millions of rural population live in 46,992 villages. The uninhabited villages number is 4,647. There are 83 towns consisting of 26 Municipalities and 57 Notified Area Councils.

The decade 1961 to 1971 has shown an increase in population to an extent of 26.05 per cent or nearly 2.50 per cent per annum. Koraput district showed the highest population growth rate of 36.37% while Kalahandi shows the lowest of 15.27% between 1961 and 1971. The sex ratio of the State is 987 females for every 1,000 males. The highest sex ratio observed is in Ganjam district and the lowest in Sundargarh district.

The population density in urban and rural areas of the State are respectively 11,131 and 130 per Sq. Km. and for the State as a whole it is 141 per Sq. Km. The highest population density has been in the district of Cuttack, which is 341 per Sq. Km. and the lowest is 56 per Sq. Km. in the district of Phulbani, which is mostly inhabited by Adivasis (Tribal people).

The industrial and agricultural belts of the State are well connected by railways, the high ways and the inland water transport. The state's proximity to the industrial centres of Bihar and West Bengal gives it a potential local advantage for industrial development.

Some of the important places of interest to tourist in the State are Puri, Konark, Harishankar, Ratnagiri, Gopalpur, Bhubanewar and Khiching. The Chilka lake on the East Coast is a vast natural lagoon and attracts large number of tourists throughout the year. There are also places of scenic beauty and shikar spots all over the State.

### *The Advent of Independence*

Independence brought new problems and formidable tasks, among which education figured prominently. It ushered in a new era of national development founded upon the adoption of a secular democracy, the determination to eliminate poverty of the people, to ensure a reasonable standard of living for all, and equality of opportunity for all in education, employment and cultural advancement. Therefore, greater emphasis came to be placed on educational development because of the realization that education, especially in Science and Technology, is the most powerful instrument of social transformation and economic progress. The Government of India and the States are convinced that Education is the key to national prosperity and welfare and that no investment is likely to yield greater returns than investment in human resources of which the most important component is education.

Therefore, education has become the major activity of the Nation. Quantitatively, education at all levels has shown a phenomenal development in the post-independence period. There has also been a spurt in the demand for education throughout the country. During the last fifteen years educational facilities have almost doubled at all stages.

This trend for rapid expansion of education and the facilities provided is very true and significant so far as the State of Orissa is concerned.





In 1947-48 there were only 6,814 Primary Schools in Orissa. In 1950-51 this number went up to 9,081 and the percentage of literacy was only 16.4. The number of Middle Schools also went up from 286 (1947-48) to 501 (1950-51), and that of High Schools from 106 to 172. Orissa spent Rs. 146.88 lakhs, Rs. 566.35 lakhs, Rs. 1,480.57 lakhs and Rs. 1,362.54 lakhs, respectively during the 1st, 2nd, 3rd and 4th Plan periods on education. The Third Educational Survey will indicate the outcome of this substantial in-pur of money in terms of the pattern of growth in the number of institutions, enrolment and other sensitive areas of school education over the eight-year period, 1965 to 1973.

## 1. SOME IMPORTANT FINDINGS OF THE THIRD SURVEY

TABLE 1

Sl. No.	Item of information	2nd Survey 31-12-1965	3rd Survey 31-12-1973	Percentage of increase
(1)	(2)	(3)	(4)	(5)
1	(a) No. of Primary Schools ..	24,435	31,822	30.23
	(b) No. of Primary sections attached to Middle and Secondary Schools.	627	588	..
2	(a) No. of Middle Schools ..	3,273	4,642	41.8
	(b) No. of Middle sections attached to Secondary Schools.	309	633	..
3	No. of Secondary Schools ..	1,030	1,974	91.65

(1)	(2)	(3)	(4)	(5)
4	Total No. of Schools (Primary, Middle and High Schools)	28,738	38,438	33.55
5	(a) Enrolment at Primary stage (I to V) ..	1,751,484	2,268,844	29.53
	(b) Enrolment at Primary Stage as percentage of the estimated child population in the age-group of 6—11.	70.8	74.65	3.85
6	Enrolment at Middle stage (VI to VIII) ..	255,69	359,843	40.91
7	Enrolment at Secondary stage (IX to XI) ..	160,933	194,008	92.21
8	Percentage of Rural habitations having Primary Schools.	33.8	46.3	12.5
9	Percentage of Rural population having Primary Schools in their own habitations.	63.74	74.30	10.56
10	Percentage of Rural habitations having Middle Schools.	4.8	7.24	2.44
11	Percentage of Rural habitation with Secondary Schools.	1.1	2.41	1.31
12	Population served by Secondary Schools in their own habitations.	5.17	8.59	3.42
13	Population served by a Primary Section on the average in the State.	790	721	..
14	Population served by a Middle section on the average in the State.	5,522	4,432	..
15	Population served by a Secondary section on the average in the State.	22,070	11,832	..
16	(a) No. of village served per primary School .	2	1,25	+0.75
	(b) No. of Population served per Primary School.	805	734	+71
	(c) No. of village served per Middle School ..	16	10	+6
	(d) No. of Population served per Middle School ..	6005	5929	+976
	(e) No. of village served per High School ..	51	24	+27
	(f) No. of Population served per High School ..	19,080	11,832	+7248

## 2. Habitations with Schooling Facility in the Districts

The following analysis presents a picture of educational facilities in the rural areas of the State. The total number of habitations in the district, the number of such habitations having Primary Schools in them and its percentage to the total number have been given in columns 3, 4 and 5 of Table 2. The total number of villages having Primary Schools within a distance of 1.5 Km., which is considered to be walking distance for this stage, and its percentage to the total number of habitations in the district are given in columns 6 and 7. These categories of habitations taken together constitute the number of habitations served with Primary School facilities and the percentage of such habitations is given in column 9. The column 10 gives the percentage of rural population served by Primary Schools in the districts. The figures indicate that more than 90% of the habitations in the districts of Cuttack, Balasore and Balangir have Primary School facility within easy reach. But when we take into consideration the population served by Primary School, as many as eight districts have served over 90% of the population. The districts of Koraput and Phulbani have the lowest percentage in respect of habitations served. However, when we take into consideration the percentage of population having Primary School facility within walking distance, these two districts are not in a very disadvantageous position in comparison to districts like Mayurbhanj and Sundargarh. Cuttack occupies the highest position in respect of provision of Primary School facilities, whereas, the position of Koraput is the lowest.

Table 3 presents the picture of rural areas in respect of provision of facilities for Middle School Education. The figures indicate that the districts of Cuttack, Balasore and Keonjhar have Middle Schools in more than 10% of the habitations. Koraput occupies the lowest position and the situation in Phulbani is very similar to that of Koraput. When we add to it the habitations having Middle School within a distance of 3 Km. which is regarded as walking distance for this stage, the inter-district comparison presents a slightly different picture. In the new pattern that emerges, Cuttack (51.49%) again occupies the highest place whereas Koraput with a highly unsatisfactory figure of only 8.16%, as against the State average of 53.79 per cent remains at the bottom. Cuttack is closely followed by Balasore (88.45%) and Puri (80.81%). Even though, Ganjam occupies a high position in respect of Primary education facility, it goes down very much in the list and is very close to Kalahandi and Phulbani.

The number and percentage of rural habitations having Secondary Education facility in them are presented in Table 4. The trend indicated in the previous two cases continues in respect of Secondary Education. The percentage

of rural habitations having Secondary Schools in them, is 2·41 for the State as a whole. The figures for the districts of Cuttack, Balasore, Puri, Keonjhar, Dhenkanal and Balangir exceed the State level figure whereas those of Koraput and Phulbani again appear at the bottom of the Table.

### 3. Habitations without Schooling Facility within walking distance

In spite of the rapid expansion of educational facilities, a large number of habitations have not yet been provided with schools within a reasonable walking distance. Table 5 gives the distribution of such habitations in the different population slabs. In the Third Educational Survey, a distance of 1·5 Km. has been regarded as walking distance for the Primary School stage. For the Middle and Secondary stages, this distance is taken as 3 Km. and 5 Km., respectively. As will be seen from Table 5, most of the villages having no educational facility are very small in size. Even then, there are villages which have the potentiality of sustaining a viable educational institution, but which actually do not have any. Of the habitations with a population of less than 500 nearly 25 per cent do not have primary education facilities even at a distance of 1·5 Km. But there are 244 habitations in the population slab 500—1,000, where this facility is not available.

When we come to the middle stage, it is found that 51·37% of the smaller habitations in the population slab 'below 500' do not have schools within a distance of 3 Km. Even though, the figure goes down considerably as we go up to the higher population slabs, it is significant to note that 5·83% of the habitations in the population range 2,000—5,000 are deprived of this facility. As the present emphasis is on the universalisation of education for the age-group 6—14, and our policy at the Secondary stage is consolidation and controlled expansion, we may feel satisfied for the time being with the state of affairs so far as Secondary Education facilities are concerned.

### 4. Population served by Primary School

The previous section presents an analysis of habitations served by different categories of schools. But the population served with educational facilities at different levels is a better and more meaningful index of educational growth. The present section contains an analysis of population served in different districts as a whole and also in rural areas taken separately. Table 6 indicates that 92·6 per cent of the rural population is served with primary education facilities at the State level. This includes people of two categories, namely, those who have Primary Schools in their own habitations and those for whom Primary Schools have been provided within a distance of 1·5 Km. Over 90 per cent of the population are served by primary sections

in the cases of Sambalpur, Balasore, Cuttack, Dhenkanal, Balangir, Kalahandi, Ganjam and Puri. Koraput, with 81.9 per cent, occupies the lowest position followed by Phulbani which has 84.8%. The Table further indicates that there has been substantial increase in the percentage of population served with primary education facilities in their own habitations. The overall figure for the State stands at 74.3 as against the Second Survey figure of 63.7. Thus, there has been an increase of 10.6 per cent at the State level. The increase in the percentage of population served with primary education facilities in their own habitation varies from 4.4 in the case of Dhenkanal to 22.0 per cent in case of Koraput. The districts which fall short of the State average are Sambalpur, Sundergarh, Balasore, Dhenkanal, Phulbani, Ganjam and Puri. The districts which record significant progress are Koraput, Mayurbhanj, Keonjhar, Balangir, Kalahandi and Cuttack,

Table 7 presents the above picture for the district as a whole taking into consideration both the Rural and Urban areas. The districts which are best served in respect of primary education are Cuttack, Balangir and Puri, whereas the worst served districts are Koraput, Phulbani and Mayurbhanj. The overall figure for the State indicating educational growth at primary stage is 93.23 per cent.

### 5. Population served by Middle Schools

Table 8 presents an analysis of population served by Middle Schools in the rural areas in each district and also in the State. The table shows that the percentage of population served with such facilities in their own habitations was 15.06 at the time of the Second Educational Survey (31-12-1965). The corresponding figure for the 3rd Educational Survey (31-12-1973) stands at 21.17. Thus, the percentage of overall increase is 6.11. Coming to the percentage of growth in the districts, it may be noted that in Cuttack (11.4), Balasore (9.0) and Keonjhar (8.49), the figures are comparatively higher than those of Dhenkanal (2.49), Balangir (2.81) and Kalahandi (3.06). When the percentage of population served by the Middle Schools in their own habitations is added to that of those who are within a walking distance of 3 Km. the total figure for the State as a whole comes to 68.02 per cent. It further indicates that Puri, Cuttack and Balasore have crossed the 90 per cent. Koraput on the other hand has the lowest percentage of 18.12.

The final analysis of Table 9 shows that in order to achieve 100 per cent enrolment in the age-group 6—14, we have to provide additional facilities at the Middle School stage for nearly 30 per cent of the population of the State.

## 6. Population served by Secondary Schools

The policy at the Secondary stage is different from that of the Primary and Middle stages. The main objective here is consolidation and controlled expansion. However, as will be seen from Table 10, the percentage of population served by Secondary Schools in the State as a whole is 61.2. This figure comes close to the corresponding figure for the rural areas at Middle stage. This table further shows that the percentage of population served by Secondary Schools within the habitations stands at 8.59 as against the Second Survey figure of 5.17 and thus, records a growth of 3.42%. The percentage of increase has been maximum in the case of Cuttack (7 per cent), whereas it is the lowest in case of Mayurbhanj (0.87). Taking into consideration the population served with such facility within a walking distance of 5 Km., it is seen that Cuttack and Balasore record more than 90 per cent whereas Koraput has a low percentage of only 14.75.

The picture for all the districts including rural and urban areas has been presented in Table 11.

This table shows that 64.42 per cent of the population of the State is served with Secondary School facilities within a walking distance of 5 Km. The corresponding figures for the Middle and Primary stages are 70.68 and 93.23, respectively.

The above tables throw into bold relief the regional imbalances in respect of the provision of educational facilities at different levels and indicates the difficulty involved in achieving in near future the objective of equalising educational opportunities in the State.

## 7. Distribution of Schools in the Districts

The total number of schools of all categories (Primary, Middle, High and Higher Secondary) in the State, according to the Second Educational Survey was 28,738. The corresponding figure for the Third Educational Survey is 38,438 Table 12. Thus, there has been an increase of 9,700 (33.75 per cent) in the total number of schools over a period of eight year (1965—1973). The number of Primary Schools rose from 24,435 (on 31-12-1965) to 31,822 (on 31-12-1973). The percentage of increase is, therefore, 30.2. The number of Middle Schools increased from 3,273 to 4,642 and the percentage of increase comes to 41.8. The number of High Schools has recorded the maximum percentage of growth (91.6). According to the Third Survey this number stands at 1974 as against the Second Survey figure of 1,030. Coming to the districts, it is observed that the growth in the number of

institutions is maximum for Balangir (70.89 per cent) which firmly indicates that the special attention paid to backward areas has yielded tangible results. This observation is further reinforced by the fact that the two figures next to the highest are those of Kalahandi (59.97 per cent) and Koraput (59.44 per cent). The figure for Phulbani (28.37 per cent), however, does not fall in line with the above backward districts and, therefore, needs special attention. The percentage of increase is the lowest in the case of Ganjam (16.36 per cent). This is understandable in view of the high rate of growth already achieved by the comparatively more developed districts.

### **8. Educational facilities in habitations with Scheduled Tribes Population.**

The previous analysis has shown that the rate of growth of educational facilities in backward districts like Balangir, Kalahandi and Koraput has been comparatively more if the number of new schools opened is taken into consideration. The natural corollary is that the educational needs of villages with a higher concentration of Scheduled Castes and Scheduled Tribes people are being attended to on a priority basis. But it is to be expected that the villages with a very high proportion of such population will come under the fold of education at a slow speed because of socio-economic factors. The Third Educational Survey has taken due note of this problem and the findings in this respect have been summarised in Table 13.

This table shows that the percentage of villages served with educational facilities generally decreases as the proportion of Scheduled Tribes in the village increases. In villages where Scheduled Tribes constitute 45 per cent of the population or less, Primary schools are available in 58.03 per cent of such villages. Corresponding percentage for the Middle and Secondary stages are 12.43 and 4.52 respectively. But when we reach the villages with more than 90 per cent Scheduled Tribes population, the above figures decrease to 43.08 per cent, 0.91 per cent and 0.23 per cent respectively.

### **9. Educational facilities in habitations with Scheduled Caste population**

Table 14. presents the picture of villages with different percentage of Scheduled Caste population. The pattern that emerges out of the analysis of Scheduled Tribe villages generally holds good in this case also. But the general observation is that these villages are in a more disadvantageous position. It has been reported in Table 13 that only 43.08 per cent of the villages with more than 90 per cent of Scheduled Tribe population are served with Primary Education facilities. But Table 14 shows that this figure goes down to 34.68 in the case of villages with more than 90 per cent of

Scheduled Caste population. It may, however, be noted that this trend is reversed when we come to the Middle and Secondary stages of Education in the State.

## 10. Enrolment of Students

The State level figures for enrolment in the different age-groups and at different stages of school education are presented in Table 15 along with the estimated child-population. A districtwise break-up of the enrolment of students at the primary stage is given in Table 24 which, read with Table 15, will present a clear picture of the progress made in this field. It may be observed from the tables that 5,33,531 children in the age-group of 2—6 are attending primary schools. Normally, schooling of children starts in the State at the age of five. Most of the children, at the time of entry into the Primary School must therefore be in the age-group 5-6. Our present emphasis is on the children of the age-group of 6—11. A 100 per cent enrolment of the children belonging to this age-group is our immediate goal. The table indicates that 17,36,460 children in this age-group are in schools of all categories. This constitutes 57·13 per cent of the total child population (30, 39, 35) of the State. It may further be observed from the tables referred to above that out of this percentage (57·13) 53·45 per cent children are at the Primary School stage, 3·68 per cent in the Middle and High School stages. It may again be mentioned here that besides the children in the age-group of 6—11 at the Primary School stage (53·45 per cent) 20·75 per cent of the child population in the age-group of 2—6 and 6·70 per cent of the age-group of 11—14 are also attending Primary Schools. Thus, taking into consideration both over-aged and under-aged children enrolled at the Primary stage the total comes children enrolled at the Primery stage the total comes to about 2·3 millions which works out to 74·65 per cent of the total child population in the age-group of 6—11. The corresponding percentage for the Second survey being 70·8 per cent, the increase in enrolment stands at 3·85 per cent.

The estimated child population in the age-group of 11—14, is nearly 16 lakhs, whereas the number of children attending school is nearly 3·8 lakhs, which comes to 23·31 per cent. This may amount to a slight under-estimation as some children of 13 or 14 might have joined Post-High School Certificate Courses. This factor prevents the continuation of such analysis to still higher age levels as the enrolment in the tertiary stage of education has not been included here.



The Rural—Urban and the Boys—Girls break up of the enrolment figures are given in Tables 16—19.

At the primary level, girls constitute 36·73 per cent of the children attending school. The corresponding figure for the Second Survey was 34·2. In the Middle classes (VI—VIII) the percentage of girls is 27·27 and at the Secondary stage it is 19·01 for classes IX-X and 18·43 for classes XI-XII.

The enrolment figures (Boys—Girls, Rural—Urban) for the 2nd and 3rd Surveys and the percentage of increase is presented in Tables 20—23. It may be seen from the above tables that the growth in respect of girls' enrolment is consistently higher than that of boys at all stages. The figures for boys and girls at primary stage are 24·53 and 39·16 respectively whereas in classes XI and XII the corresponding figures are 116·57 and 279·83.

#### **11. Districtwise Enrolment of students at the primary stage**

Due to the presence of students of the same age in a number of classes, which obviously raises doubts about the correctness of the recorded age, the percentage of enrolment at the primary stage to the estimated child population in the age-group 6—11 may continue to be used as a meaningful index for the comparison of enrolment statistics. Table 24 presents these statistics for the districts. The figures show an overall increase of 3·85 per cent over the 2nd Survey figure (70·8).

To arrive at a correct picture regarding the relative status of the districts in respect of the spread of primary education it is necessary to compare the proportion of district enrolment to State enrolment with the proportion of district population to the State population. This comparison has been presented in Table 25. It shows that in the case of Cuttack, Balasore, Puri and Sundargarh the district-State ratio in enrolment exceeds the population ratio. In other districts the case is otherwise and there is a remarkable shortfall in Mayurbhanj, Koraput, and Kalahandi.

#### **12. Wastage at primary stage**

Wastage in education, particularly at the Primary level, is of great concern to the educational administrators and planners. The combined effect of premature withdrawal and stagnation is manifested in the gradual decrease

in enrolment figures in subsequent classes. Table 26 presents these figures as percentage of the enrolment figure in class I, separately for boys and girls and also for the total student population. The State and National figures for the total student population including boys and girls are as follows:—

Class	I	II	III	IV	V
State	100	58	42	29	22
All-India	100	66	52	40	32

The above figures suggest that only one student in every five reaches class V level. Of course, incomplete primary schools with classes up to III (the L. P. and other incomplete ones) are partly responsible for this lowering of the enrolment figures in classes IV and V. But the same trend is very much there even in classes I to III. The situation in the advanced districts of Balasore, Cuttack and Puri is not very encouraging where the schools can retain only one child out of every three. In Koraput and Kalahandi, not even one out of every 10 (ten) goes up to class V. What is still more disturbing is that at the time of the 2nd Survey, the position was even better than the present case, as the number of the students in class V was approximately 23·7 for every 100 in class I, whereas the corresponding figure is now 22. The situation has slightly improved in the case of girls as in 1965 the number of girls in class V was 15 for every 100 in class I, whereas the corresponding figure now stands at 19.

### 13. School Community Co-operation—

With a view to break the Disolation between the school and community and to ensure co-operation and effective interaction between the two, a number of formal programmes can be planned. Establishment of Parent-Teachers' Associations is a means of bringing the School and the community closer to each other. Besides this, the school should be sensitive to the needs and problems of the community and should participate in its various activities as and when necessary. The community should also participate in the activities of the school and help in the planning and execution of some of the curricular and co-curricular programmes. The 3rd Educational Survey includes items for a stock-taking of such programmes and activities and the analysis of the responses is presented in Table 27.

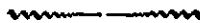
This table shows that even though only a few schools have Parent-Teachers' Associations more schools have programmes of participation in community activities, and the cases of community involvement in school

affairs are still more frequent. Even though this analysis indicates a satisfying state of affairs, the situation demands more frequent contact and more intimate involvement.

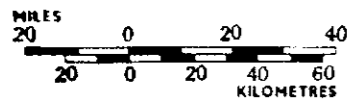
#### **14. Students owning text books**

Educational backwardness ultimately leading to stagnation and wastage is a serious problem at the primary stage. Even though inadequate school facilities, unsatisfactory teacher-pupil ratio and ineffective teaching methods are responsible for the huge wastage in education, the economic condition of pupils is also a major contributing factor. Poor economic condition affects the educational growth of children in a variety of ways. But the most important thing is non-availability of text books especially in subjects like language and Arithmetic. The Third-Educational Survey was sensitive to this problem and collected data regarding the number of students owning text books in these two subjects. The analysis of the data is presented in Table 28, which reveals that on the average 66.12 per cent of the children in primary schools have text books of their own. The problem is more serious in the Rural areas where the percentage of such students is only 64.32. In the Urban areas 82.64 per cent of students have text books. The percentage of students not owning text books will still increase when we take into consideration the availability of books in both the subjects. The situation is expected to be different in case of children belonging to Scheduled Castes and Scheduled Tribes as they are supplied with free books. The table indicates the number of such children having text books in these subjects.

It is significant to note that, the Government is fully aware of the problem and is taking necessary steps for relieving the poor parents of the burden of purchasing text books for their children.



ADMINISTRATIVE MAP  
OF  
**ORISSA**



REFERENCE

State Boundary	—————
District Boundary	—————
Subdivision Boundary	-----
Taluk Boundary	—————
Police Station Boundary	.....
State Capital	★
District/Subdivision Hqs.	●
Taluk/PS Hqs.	○

Drawn in the office of the Director of Census Operations, Orissa from the State map approved by the Survey of India. Jurisdictional changes in the district boundaries have been duly vetted by the Director of Land Records and Surveys, Orissa. 1972

---

# TABLES

---

**TABLE**  
**Habitations Served by Primary**

Sl. No.	Name of the district	Total number of habitations in the district	Total number of Habitations served by primary sections in the habitations	
			Number	Per cent
(1)	(2)	(3)	(4)	(5)
1	Sambalpur	5,170	2,438	47.2
2	Sundargarh	4,155	1,359	32.8
3	Keonjhar	2,366	1,235	52.2
4	Mayurbhanj	5,476	1,972	36.0
5	Balasore	5,776	2,265	39.2
6	Cuttack	8,103	4,581	56.5
7	Dhenkanal	3,417	1,772	51.9
8	Phulbani	4,537	1,410	31.1
9	Balangir	2,585	2,198	85.0
10	Kalahandi	3,842	1,784	46.4
11	Ganjam	4,905	2,860	58.3
12	Koraput	8,208	3,382	41.2
13	Puri	5,654	2,458	43.5
Total		64,194	29,714	46.3

## Sections (Rural) Third Survey

Total number of habitations served by primary sections within 1.5 Km.		Total number of habitations served by primary sections within the habitations or at a distance of 1.5 Km.		Percentage of population served by primary sections either in the habitations or within a distance of 1.5 Km.
Number (6)	Per cent (7)	Number (8)	Per cent (9)	
1,332	25.8	3,770	73.0	91
1,860	44.8	3,219	77.6	86.3
584	24.7	1,819	76.9	88.6
2,213	40.4	4,185	76.4	85.7
3,093	53.5	5,358	92.7	95.3
3,218	39.7	7,799	96.2	98.3
1,079	31.6	2,851	83.5	94.4
1,593	35.1	3,003	66.2	84.8
197	7.6	2,395	92.6	98.1
1,101	28.7	2,885	75.1	92.3
735	15.0	3,595	73.3	95.1
1,635	19.9	5,017	61.1	81.9
2,618	46.3	5,076	89.8	96.2
21,258	33.1	50,972	79.4	92.6

## Habitations Served by Middle Sections—

Sl. No.	Name of the district	Total number of habitations in the district	Total number of habitations served by Middle sections in the habitation	
			Number	Per cent
(1)	(2)	(3)	(4)	(5)
1	Sambalpur	5,170	340	6.58
2	Sundargarh	4,155	209	5.27
3	Keonjhar	2,366	252	10.65
4	Mayurbhanj	5,476	356	6.50
5	Balasore	5,776	631	10.02
6	Cuttack	8,103	1,138	14.04
7	Dhenkanal	3,417	320	9.37
8	Phulbani	4,537	101	2.23
9	Balangir	2,585	217	8.39
10	Kalahandi	3,842	148	3.85
11	Ganjam	4,905	272	5.55
12	Koraput	8,208	145	1.77
13	Puri	5,654	508	8.98
Total		64,194	4,647	7.24



No. 3

## Rural Third Survey

Total number of habitations served by Middle Sections within a distance of 3 Km.		Total number of habitations served by Middle Sections within the habitation or within a distance of 3 Km.		Percentage of population served by Middle Sections within the habitations or within a distance of 3 Km.
Number	Per cent	Number	Per cent	
(6)	(7)	(8)	(9)	(10)
1,807	34·95	2,147	41·53	58·51
1,911	48·40	2,130	51·26	61·62
1,123	47·46	1,375	58·11	66·55
3,201	58·46	3,557	64·96	69·27
4,478	77·58	5,109	88·45	90·40
6,276	77·45	7,414	91·49	94·01
1,746	51·10	2,066	60·47	70·50
1,216	26·80	1,317	29·03	46·50
1,008	38·99	1,225	47·38	57·63
1,099	28·60	1,247	32·45	48·62
1,435	29·26	1,707	34·81	60·71
525	6·39	670	8·16	18·12
4,061	71·83	4,569	80·81	94·36
29,886	46·56	34,533	53·79	68·02

## Habitations served by Secondary Sections—

Sl. No.	Name of the district	Total number of habitations in the district	Total number of habitations served by Secondary Sections in the habitation	
			Number	Per cent
(1)	(2)	(3)	(4)	(5)
1	Sambalpur ..	5,170	93	1·80
2	Sundargarh ..	4,155	82	1·98
3	Keonjhar ..	2,366	71	3·00
4	Mayurbhanj ..	5,476	115	2·10
5	Balasore ..	5,776	228	3·95
6	Cuttack ..	8,103	425	5·24
7	Dhenkanal ..	3,417	93	2·72
8	Phulbani ..	1,537	26	0·57
9	Balangir ..	2,585	68	2·63
10	Kalahandi ..	3,842	44	1·15
11	Ganjam ..	4,905	92	1·82
12	Koraput ..	8,208	45	0·55
13	Puri ..	5,654	164	2·90
Total ..		64,194	1,546	2·41

## Rural—Third Survey

Total number of habitations served by Secondary Sections within 5 Km.		Total number of habitations served by Secondary Sections within the habitations or within a distance of 5 Km.		Percentage of population served by Secondary Sections either in the habitation or within a distance of 5 Km.
Number	Per cent	Number	Per cent	
(6)	(7)	(8)	(9)	(10)
1,604	31·03	1,697	32·83	45·48
1,613	38·82	1,695	40·80	48·18
956	40·41	1,027	43·41	50·80
2,961	54·07	3,076	56·17	58·81
4,921	85·20	5,149	89·15	90·38
6,969	86·01	7,394	91·25	93·68
1,471	43·05	1,564	45·77	55·58
759	16·73	785	17·30	28·24
981	37·95	1,049	40·58	47·23
982	25·56	1,026	26·71	37·33
1,630	33·23	1,722	35·11	58·42
629	7·66	674	8·21	14·75
4,115	72·78	4,279	75·63	82·96
<b>29,591</b>	<b>46·10</b>	<b>31,137</b>	<b>48·51</b>	<b>61·2</b>

TABLE

## Habitations in different population Slab/with

Population slab	Total number of habitations in the State	Number of habitations with/without primary education facility within a distance of 1.5 Km.		
		With	Without	
(1)	(2)	(3)	Number (4)	Per cent (5)
Below 100	16,049	8,927	7,122	44.69
100—199	14,120	10,544	3,576	25.33
200—299	9,798	8,226	1,572	16.04
300—399	6,716	6,220	496	7.39
400—499	4,557	4,357	200	4.39
<b>Sub-Total upto 499</b>	<b>51,240</b>	<b>38,274</b>	<b>12,966</b>	<b>25.30</b>
500—999	9,527	9,283	244	2.56
1000—1999	2,948	2,938	10	0.34
2000—4999	463	461	2	0.43
5000 above	16	16	..	0.0
<b>Total</b>	<b>64,194</b>	<b>50,972</b>	<b>13,222</b>	<b>20.60</b>

5

without educational facility in the State

Number of habitations with/without Middle School facility within a distance of 3 Km.			Number of habitations with/without Secondary School facility within a distance of 5 Km.		
With	Without		With	Without	
(6)	Number	Per cent	(9)	Number	Per cent
(6)	(7)	(8)	(9)	(10)	(11)
7,200	8,849	55.14	5,934	10,115	63.03
5,327	8,793	62.27	6,245	7,875	55.77
4,891	4,907	50.08	4,400	5,398	55.09
4,213	2,503	37.27	3,292	3,424	50.98
3,288	1,269	27.85	2,677	1,880	41.26
24,919	26,321	51.37	22,548	28,692	56.00
6,744	2,783	29.21	6,035	3,492	36.65
2,418	530	17.98	2,137	811	27.51
436	27	5.83	401	62	13.39
16	..	0.0	16	..	0.0
34,533	19,661	30.63	31,137	33,057	51.50

TABLE  
Districtwise Analysis of population served by

Serial No.	Name of district	Estimated population as on 31-12-1973 (3rd Survey)	Percentage of population served by primary sections within the habitations			
			2nd Survey	3rd Survey		
(1)	(2)	(3)	Percentage	Population	Percentage	
(1)	(2)	(3)	(4)	(5)	(6)	
1	Sambalpur	..	17,31,929	71.5	13,30,671	76.8
2	Sundargarh	..	8,24,122	46.3	4,59,570	55.8
3	Keonjhar	..	9,54,598	56.8	7,18,675	75.3
4	Mayurbhanj	..	14,67,608	45.5	8,70,865	59.3
5	Balasore	..	18,90,510	57.9	12,33,778	65.3
6	Cuttack	..	37,55,251	66.3	28,95,019	77.1
7	Dhenkanal	..	13,34,570	73.1	10,33,668	77.5
8	Phulbani	..	6,35,637	51.2	3,76,462	59.2
9	Balangir	..	12,59,373	79.2	12,05,552	95.7
10	Kalahandi	..	11,93,292	61.1	9,20,893	77.2
11	Ganjam	..	21,54,284	85.4	19,30,896	89.6
12	Koraput	..	20,09,512	49.9	14,45,714	71.9
13	Puri	..	22,04,602	59.9	14,91,365	67.6
Total		..	2,14,15,288	63.7	1,59,13,128	74.3

## Primary Sections ( Rural )

increase in percentage of population served Cols. 6-4 (7)	Percentage of population served by Primary sections within a distance of 1.5 Km.		Percentage of population served by Primary sections within the habi- tations or at a distance of 1.5 Km.	
	3rd Survey		3rd Survey	
	Population (8)	Percentage (9)	Population (10)	Percentage (11)
5.3	2,46,073	14.2	15,76,744	91.0
9.5	2,51,104	30.5	7,10,674	86.3
18.5	1,24,779	13.3	8,45,454	88.6
13.8	3,87,494	26.4	12,58,359	85.7
7.4	5,67,362	30.0	18,01,140	95.3
10.8	7,94,287	21.2	36,89,306	98.3
4.4	2,24,932	16.9	12,58,650	94.4
8.0	1,62,461	25.6	5,38,923	84.8
16.7	30,532	2.4	12,36,084	98.1
16.1	1,80,030	15.1	11,00,923	92.3
4.2	1,19,517	5.5	20,50,413	95.1
22.0	2,01,078	10.0	16,46,787	81.9
7.7	6,28,525	28.6	21,19,890	96.2
10.6	39,20,219	18.3	1,98,33,347	92.6

**TABLE**  
**Districtwise Analysis of population served by**

Sl. No.	Name of the district	Total estimated population as on 31-12-1973 (3rd Survey)
(1)	(2)	(3)
1	Sambalpur	19,64,794
2	Sundargarh	10,75,791
3	Keonjhar	10,25,312
4	Mayurbhanj	15,09,556
5	Balasore	19,97,675
6	Cuttack	40,76,155
7	Dhenkanal	13,88,973
8	Phulbani	6,56,177
9	Balangir	13,50,869
10	Kalahandi	12,52,675
11	Ganjam	24,27,138
12	Koraput	21,85,134
13	Puri	24,45,206
<b>Total</b>		<b>2,33,55,455</b>



## Primary Sections ( Rural and Urban )

Total population served by Primary sections either in the habitations or within distance of 1.5 Km.	Percentage of population served to the total population of the district	R a n k
(4)	(5)	(6)
18,09,609	92.10	VIII
9,62,348	89.45	IX
9,16,168	89.36	X
13,00,307	86.14	XI
19,08,305	95.53	V
40,10,210	98.38	I
13,13,053	94.53	VI
5,59,463	85.26	XII
13,27,580	98.28	II
11,60,336	92.63	VII
23,23,267	75.72	IV
18,22,409	83.40	XIII
23,60,494	96.54	III
2,17,73,514	93.23	

TABLE:

Districtwise analysis of population served by

Sl. No.	Name of the district	Estimated population as on 31-12-1973 (3rd survey)	Percentage of population served with Middle School facility in their own habitations			
			2nd survey, 1965 percentage	3rd survey (1973)		
				No.	percentage	
(1)	(2)	(3)	(4)	(5)	(6)	
1	Sambalpur ..	17,31,929		16.50	3,68,487	21.28
2	Sundargarh ..	8,24,122		10.78	1,30,584	15.85
3	Keonjhar ..	9,54,598		16.77	2,42,155	26.26
4	Mayurbhanj ..	14,67,608		11.72	2,22,482	15.16
5	Balasore ..	18,90,510	Balasore*	15.23	4,68,251	24.77
			Bhadrak*	16.46		
6	Cuttack ..	37,55,251	Cuttack*	16.15	10,69,972	28.49
			Jajpur*	17.33		
			Kendrapada*	17.80		
7	Dhenkanal ..	13,34,570		24.20	3,66,156	26.69
8	Phulbani ..	6,35,637		8.38	75,923	11.94
9	Balangir ..	12,59,373		18.76	2,71,609	21.57
10	Kalahandi ..	11,93,292		9.98	1,55,610	13.04
11	Ganjam ..	21,54,284	Ganjam*	17.78	4,88,938	22.70
			Bhanjanagar*	19.69		
12	Koraput ..	20,09,512		5.41	1,75,041	8.71
13	Puri ..	22,04,602	Puri*	12.20	5,09,379	22.94
			Khurda*	18.92		
	Total ..	2,14,15,288		15.06	45,33,587	21.17

\*\* The 2nd survey figures are reported

## middle Sections—Rural

Increase in the percentage of population served.	Population served by Middle Sections within 3 K m.		Population served by Middle Sections either in the habitation or within a distance of 3 K m.		Rank
	No.	percentage	No.	percentage	
(7) Col. (6-4)	(8)	(9)	(10)	(11)	(12)
4·78	6,44,766	37·23	10,13,253	58·51	IX
5·07	3,77,241	45·77	5,07,825	61·62	VII
8·49	3,94,190	41·29	6,35,345	66·55	VI
4·44	7,94,129	54·11	10,16,611	69·27	V
9·00	12,40,712	65·63	17,08,963	90·40	III
11·4	24,60,304	65·52	35,30,276	94·01	II
2·49	5,84,622	43·81	9,40,778	70·50	IV
3·56	2,19,646	34·56	2,95,569	46·50	XII
2·81	4,54,194	36·07	7,25,803	57·63	X
3·06	4,24,625	35·58	5,30,235	48·62	XI
4·00	8,18,939	38·01	13,07,877	60·71	VIII
3·30	1,89,013	9·41	3,64,054	18·12	XIII
6·38	14,31,617	71·42	19,40,996	94·36	I
6·11	1,00,33,998	46·85	1,45,67,585	68·02	

or educational districts.

TABLE

## Districtwise Analysis of Population Served

Sl. No.	Name of the district	Total estimated population as on 31-12-1973 (3rd Survey)	Total population served by Middle Sections within 3 Km.
(1)	(2)	(3)	(4)
1	Sambalpur	19,64,794	12,46,118
2	Sundargarh	10,75,791	7,59,494
3	Keonjhar	10,25,312	7,06,059
4	Mayurbhanj	15,09,556	10,58,559
5	Balasore	19,97,675	18,16,128
6	Cuttack	40,76,155	38,51,180
7	Dhenkanal	13,88,973	9,95,181
8	Phulbani	6,56,177	3,16,109
9	Balangir	13,50,869	8,17,299
10	Kalahandi	12,52,675	6,39,618
11	Ganjam	24,27,188	15,80,731
12	Koraput	21,85,134	5,39,676
13	Puri	24,45,206	21,81,600
	<b>Total</b>	<b>2,33,55,455</b>	<b>1,65,07,752</b>

## by Middle Sections (Rural &amp; Urban)

---

Percentage of population served by middle sections within 3 Km.	Rank
(5)	(6)
63·42	IX
70·60	V
68·86	VII
70·12	VI
90·91	II
94·48	I
71·65	IV
48·17	XII
60·60	X
51·06	XI
65·13	VIII
24·70	XIII
89·22	III
70·68	

---

TABLE  
Districtwise analysis of population

Serial No.	Name of the district	Estimated population as on 31.12.1973 (3rd Survey)	Population served by secondary sections within the habitation & percentage		
			2nd Survey percentage	3rd Survey No.      Percentage	
(1)	(2)	(3)	(4)	(5)	(6)
1	Sambalpur ..	1,731,929	4.93	140,482	8.11
2	Sundargarh ..	824,122	3.56	56,458	6.85
3	Keonjhar ..	954,598	4.64	98,996	10.37
4	Mayurbhanj ..	1,467,608	4.06	72,365	4.93
5	Balasure ..	1,890,510	4.89	179,731	9.51
			(Balasure Ednl. Dist.)		
			(Bhadrak Ednl. Dist.)		
			5.95		
6	Cuttack ..	3,755,251	5.33	457,338	12.18
			(Cuttack Ednl. Dist.)		
			4.36		
			(Jajpur Ednl. Dist.)		
			5.63		
			(Kendrapara Ednl. Dist.)		
7	Dhenkanal ..	1,334,570	6.55	123,087	9.22
8	Phulbani ..	635,637	3.26	28,836	4.54
9	Balangir ..	1,259,373	7.03	114,832	9.12
10	Kalahandi ..	1,193,292	2.59	57,917	4.85
11	Ganjam ..	2,154,284	8.69	213,899	9.93
			(Ganjam Ednl. district)		
			8.16		
			(Bhanjagar Ednl. Dist.)		
12	Koraput ..	2,009,512	2.98	91,945	4.58
13	Puri ..	2,204,602	3.42	203,273	9.22
			(Puri Ednl. Dist.)		
			7.83		
			(Khurda Ednl. Dist.)		
	Total ..	21,415,288	5.17	1,839,159	8.59

## served by Secondary Schools—Rural

Increase in percentage of popula- tion served	Population served by secondary sections within 5 Km.		Total population served by secondary sections either in the habitation or within a distance of 5 Km.		Rank
	No.	Percentage	No.	Percentage	
3·18	647,249	37·37	787,731	45·48	X
3·29	340,644	41·33	398,102	48·18	VIII
5·73	385,917	40·43	484,913	50·80	VII
0·87	790,726	53·88	873,091	58·81	IV
4·00 (Approx.)	1,528,908	80·87	1,708,639	90·38	II
7·00 (Approx.)	3,060,667	81·50	351,825	93·68	I
2·67	618,685	46·36	741,772	55·58	VI
1·28	150,648	23·70	179,484	28·24	XII
2·09	480,001	38·11	594,833	47·23	IX
2·26	387,533	32·48	445,450	37·33	XI
1·5	1,044,632	48·49	1,258,531	58·42	V
1·60	204,424	10·17	296,369	14·75	XIII
3·6	1,625,625	73·74	1,828,898	82·96	III
3·42	11,265,719	52·61	13,104,878	61·2	

TABLE 11

Districtwise analysis of population Served by secondary Sections ( Rural &amp; Urban )

Serial No.	Name of the district	Total estimated population as on 31-12-1973 (3rd Survey)	Total population served by secondary sections either in the habitations or within a distance of 5 Km.	Percentage of population served by secondary sections in the habitations or within a distance of 5 Km.	Rank
(1)	(2)	(3)	(4)	(5)	(6)
1	Sambalpur ..	1,964,794	1,020,596	51.94	IX
2	Sundargarh ..	1,075,791	648,771	60.31	VI
3	Keonjhar ..	1,025,312	545,627	53.22	VIII
4	Mayurbhanj —	1,509,556	915,039	60.62	V
5	Balasore ..	1,997,675	1815,804	90.90	II
6	Cuttack ..	4,076,155	3838,909	94.18	I
7	Dhenkanal ..	1,388,973	796,175	57.32	VII
8	Phulbani ..	656,177	200,024	30.48	XII
9	Balangir ..	1,350,869	686,389	50.81	X
10	Kalahandi ..	1,252,675	504,833	40.30	XI
11	Ganjam ..	2,427,138	1,531,385	63.09	IV
12	Koraput ..	2,185,134	471,991	21.64	XIII
13	Puri ..	2,445,206	2,069,502	84.64	III
Total ..		23,355,455	15,045,045	64.42	



TABLE 12

## Number of Villages, Habitations and Schools by stages in the Districts

Serial No.	Name of the district	Number of villages in the district and its percentage to the total number of villages in the State		Number of habitations and its percentage to the State figure	
		Number	Per cent	Number	Per cent
(1)	(2)	(3)	(4)	(5)	(6)
1	Sambalpur (Rural) ..	3,691	7.4	5,170	8.1
	Sambalpur (Urban) ..	..	..	10	13.6
2	Sundargarh (Rural) ..	1,712	33.2	4,155	6.5
	Sundargarh (Urban) ..	..	..	5	6.2
3	Keonjhar (Rural) ..	2,082	4.0	2,366	3.7
	Keonjhar (Urban) ..	..	..	3	4.8
4	Mayurbhanj (Rural) ..	3,982	7.7	5,476	8.5
	Mayurbhanj (Urban) ..	.	..	4	2.5
5	Balasore (Rural) ..	4,376	8.5	5,776	9.8
	Balasore (Urban) ..	..	..	3	4.9
6	Cuttack (Rural) ..	6,627	12.8	8,103	12.6
	Cuttack (Urban) ..	..	..	8	9.9
7	Dhenkanal (Rural) ..	3,157	6.12	3,417	5.3
	Dhenkanal (Urban) ..	..	..	4	4.8
8	Phulbani (Rural) ..	4,635	9.2	4,537	7.1
	Phulbani (Urban) ..	..	..	2	2.5
9	Balangir (Rural) ..	2,752	5.3	2,585	4.0
	Balangir (Urban) ..	..	..	6	7.4
10	Kalahandi (Rural) ..	2,837	5.5	3,842	6.0
	Kalahandi (Urban) ..	..	..	5	6.2
11	Ganjam (Rural) ..	4,757	9.2	4,905	7.6
	Ganjam (Urban) ..	..	..	16	18.5
12	Koraput (Rural) ..	6,124	11.9	8,208	12.3
	Koraput (Urban) ..	..	..	10	12.3
13	Puri (Rural) ..	4,907	9.5	5,654	8.8
	Puri (Urban) ..	..	..	8	6.2
	Total (Rural) ..	51,639	..	64,194	..
	Total (Urban) ..	83	..	83	..

Serial No.	Name of the district	Population of 1961 and its percentage to State figure		Population of 1971 and its percentage to State figure	
		Number	Per cent	Number	Per cent
(1)	(2)	(7)	(8)	(9)	(10)
1	Sambalpur (Rural) ..	13,71,586	7.4	16,23,121	8.1
	Sambalpur (Urban) ..	1,05,735	9.2	2,21,777	12.1
2	Sundergarh (Rural) ..	6,23,271	3.4	7,91,073	3.8
	Sundergarh (Urban) ..	1,35,760	11.7	2,39,685	12.9
3	Keonjhar (Rural) ..	6,91,688	3.7	8,88,167	4.4
	Keonjhar (Urban) ..	41,654	3.5	67,347	3.1
4	Mayurbhanj (Rural) ..	11,75,440	6.4	13,94,249	6.9
	Mayurbhanj (Urban) ..	28,420	2.4	39,951	2.1
5	Balasore (Rural) ..	13,23,260	7.2	17,30,350	8.6
	Balasore (Urban) ..	93,846	8.1	1,00,154	5.4
6	Cuttack (Rural) ..	28,36,747	15.3	35,22,055	12.5
	Cuttack (Urban) ..	2,12,369	19.2	3,05,623	16.5
7	Dhenkanal (Rural) ..	9,88,274	5.3	12,47,102	6.2
	Dhenkanal (Urban) ..	47,132	4.1	51,812	2.8
8	Phulbani (Rural) ..	5,01,040	2.7	6,02,107	2.9
	Phulbani (Urban) ..	13,387	1.1	19,568	1.5
9	Balangir (Rural) ..	10,46,591	4.9	11,76,994	5.8
	Balangir (Urban) ..	49,659	4.2	56,663	4.7
10	Kalahandi (Rural) ..	9,06,820	4.9	11,07,316	5.5
	Kalahandi (Urban) ..	39,644	3.4	36,553	1.9
11	Ganjam (Rural) ..	17,21,157	3.8	20,33,952	10.1
	Ganjam (Urban) ..	1,57,373	13.6	2,59,856	6.8
12	Koraput (Rural) ..	15,38,250	9.3	18,76,022	9.3
	Koraput (Urban) ..	1,01,088	8.7	1,67,259	9.1
13	Puri (Rural) ..	17,44,951	9.4	21,11,712	1.5
	Puri (Urban) ..	1,31,391	11.3	2,29,147	10.2
	Total—(Rural) ..	1,65,19,575	..	2,00,99,220	..
	Total—(Urban) ..	11,57,458	..	18,45,395	..
	Grand Total ..	1,76,77,033	..	2,19,44,615	..

Serial No.	Name of the district	Primary Schools			
		2nd Survey (1965)	3rd Survey (1973)	Increase in number of Schools	
		Number	Number	Number	Per cent
(1)	(2)	(11)	(12)	(13)	(14)
1	Sambalpur (Rural) ..	2,060	2,531	471	22·8
	Sambalpur (Urban) ..	80	152	72	81·25
2	Sundargarh (Rural) ..	1,066	1,390	324	30·4
	Sundargarh (Urban) ..	74	82	8	10·08
3	Keonjhar (Rural) ..	923	1,266	343	37·1
	Keonjhar (Urban) ..	35	47	12	34·3
4	Mayurbhanj (Rural) ..	1,447	1,983	536	37·1
	Mayurbhanj (Urban) ..	30	58	28	93·3
5	Balasore (Rural) ..	1,899	2,307	408	22·6
	Balasore (Urban) ..	99	79	20	20·2
6	Cuttack (Rural) ..	4,144	4,778	634	15·3
	Cuttack (Urban) ..	185	245	60	32·4
7	Dhenkanal (Rural) ..	1,440	1,790	350	24·3
	Dhenkanal (Urban) ..	30	43	13	43·3
8	Phulbani (Rural) ..	1,117	1,420	303	27·1
	Phulbani (Urban) ..	17	23	6	35·3
9	Balangir (Rural) ..	1,283	2,257	974	75·9
	Balangir (Urban) ..	40	66	26	65·0
10	Kalahandi (Rural) ..	1,114	1,797	683	61·3
	Kalahandi (Urban) ..	39	52	13	33·3
11	Ganjam (Rural) ..	2,584	2,941	357	13·3
	Ganjam (Urban) ..	115	168	53	46·1
12	Koraput (Rural) ..	2,240	3,519	1,279	57·1
	Koraput (Urban) ..	83	190	107	128·9
13	Puri (Rural) ..	2,210	2,500	290	13·1
	Puri (Urban) ..	81	138	57	70·4
Total— (Rural) ..		23,527	30,479	6,952	29·5
Total— (Urban) ..		968	1,343	435	47·9
Grand Total ..		24,435	31,822	7,387	30·23

Serial No.	Name of the district	Middle Schools			
		2nd Survey (1965)	3rd Survey (1973)	Increase in number of Schools	
		Number	Number	Number	Per cent
(1)	(2)	(15)	(16)	(17)	(18)
1	Sambalpur (Rural)	270	350	80	29.6
	Sambalpur (Urban)	24	46	22	91.7
2	Sundargarh (Rural)	121	207	86	71.07
	Sundargarh (Urban)	22	27	5	22.7
3	Keonjhar (Rural)	179	246	67	37.4
	Keonjhar (Urban)	5	12	7	140.0
4	Mayurbhanj (Rural)	270	350	80	29.6
	Mayurbhanj (Urban)	7	9	2	28.5
5	Balasore (Rural)	362	598	236	65.2
	Balasore (Urban)	16	22	6	37.5
6	Cuttack (Rural)	699	1,052	353	50.5
	Cuttack (Urban)	26	32	6	23.8
7	Dhenkanal (Rural)	240	294	54	22.5
	Dhenkanal (Urban)	7	5	(- )2	(- )28.6
8	Phulbani (Rural)	68	96	28	41.2
	Phulbani (Urban)	1	..	(- )1	(- )100
9	Balangir (Rural)	151	213	62	41.6
	Balangir (Urban)	12	9	(- )3	25.00
10	Kalahandi (Rural)	94	140	46	48.9
	Kalahandi (Urban)	10	8	(- )2	20.0
11	Ganjam (Rural)	190	244	54	23.4
	Ganjam (Urban)	28	23	5	17.8
12	Koraput (Rural)	96	145	49	51.03
	Koraput (Urban)	10	14	4	40.00
13	Puri (Rural)	348	478	130	32.3
	Puri (Urban)	17	22	5	29.4
	Total (Rural)	3,088	4,413	1,325	42.9
	Total (Urban)	185	229	44	23.8
	Grand Total	3,273	4,642	1,369	41.8

Sl. No.	Name of the district	High Schools			
		2nd Survey (1965)	3rd Survey (1973)	Increase in number of Schools	
		Number	Number	Number	Per cent
(1)	(2)	(19)	(20)	(21)	(22)
1	Sambalpur (Rural)	52	107	55	105.7
	Sambalpur (Urban)	16	35	19	118.7
2	Sundargarh (Rural)	26	79	53	203.9
	Sundargarh (Urban)	12	27	15	125.0
3	Keonjhar (Rural)	37	76	39	105.4
	Keonjhar (Urban)	6	9	3	50.0
4	Mayurbhanj (Rural)	75	121	46	61.3
	Mayurbhanj (Urban)	8	13	5	62.5
5	Balasore (Rural)	116	233	117	100.8
	Balasore (Urban)	14	17	3	21.4
6	Cuttack (Rural)	215	472	257	14.5
	Cuttack (Urban)	38	51	13	34.2
7	Dhenkanal (Rural)	53	100	47	88.7
	Dhenkanal (Urban)	10	12	2	20.00
8	Phulbani (Rural)	16	27	11	68.7
	Phulbani (Urban)	4	4	Nil	Nil
9	Balangir (Rural)	41	68	27	65.9
	Balangir (Urban)	12	17	5	41.6
10	Kalahandi (Rural)	19	45	26	136.8
	Kalahandi (Urban)	8	12	4	50.00
11	Ganjam (Rural)	74	99	25	33.7
	Ganjam (Urban)	30	52	22	73.3
12	Koraput (Rural)	27	44	17	62.9
	Koraput (Urban)	12	23	11	91.6
13	Puri (Rural)	87	180	93	100.7
	Puri (Urban)	22	51	29	131.8
	Total (Rural)	838	1,651	813	97.1
	Total (Urban)	192	323	131	68.2
	<b>Grand Total</b>	<b>1,030</b>	<b>1,974</b>	<b>944</b>	<b>91.6</b>

Serial No.	Name of the district	Higher secondary schools	Total number of institutions			
		3rd survey	2nd survey	3rd survey	Increase in number of schools	
		Number	Number	Number	Number	Per cent
(1)	(2)	(23)	(24)	(25)	(26)	(27)
1	Sambalpur (Rural) ..		2,382	2,988	606	25.4
	Sambalpur (Urban) ..	1	120	233	113	94.1
2	Sundergarh (Rural) ..	..	1,213	1,676	463	38.1
	Sundergarh (Urban) ..	..	108	136	28	25.9
3	Keonjhar (Rural) ..	..	1,139	1,588	449	39.4
	Keonjhar (Urban) ..	..	46	68	22	47.9
4	Mayurbhanj (Rural) ..	..	1,792	2,454	662	36.9
	Mayurbhanj (Urban) ..	..	45	80	35	77.7
5	Balasore (Rural) ..	1	2,377	3,138	761	32.1
	Balasore (Urban) ..	..	129	118	(- )11	(- )8.5
6	Cuttack (Rural) ..	1	5,058	6,302	1,244	24.5
	Cuttack (Urban) ..	1	249	328	79	31.7
7	Dhenkanal (Rural) ..	1	1,733	2,184	451	26.0
	Dhenkanal (Urban) ..		47	60	13	27.6
8	Pbulbani (Rural) ..	..	1,201	1,543	342	28.4
	Phulbani (Urban) ..	..	22	27	5	22.7
9	Balangir (Rural) ..	..	1,475	2,538	1,063	72.1
	Balangir (Urban) ..	..	64	92	28	53.1
10	Kalahandi (Rural) ..	..	1,227	1,982	755	61.5
	Kalahandi (Urban) ..	..	57	72	15	26.3
11	Ganjam (Rural) ..	1	2,848	3,284	436	15.3
	Ganjam (Urban) ..	2	173	243	70	40.4
12	Koraput (Rural) ..	1	2,363	3,708	1,345	56.9
	Koraput (Urban) ..	1	105	227	122	116.2
13	Puri (Rural) ..	1	2,645	3,158	513	19.4
	Puri (Urban) ..	4	120	211	91	77.5
Total (Rural) ..		5	27,453	36,543	9,090	33.1
Total (Urban) ..		9	1,285	1,895	610	47.6
Grand Total ..		14	28,738	38,438	9,700	33.75

Serial No.	Name of the district	Total number of institutions in Rural and Urban areas		increase	
		3rd Survey	2nd Survey	Number	Per cent
(1)	(2)	(28)	(29)	(30)	(31)
1	Sambalpur (Rural) ..	3,221	2,502	719	28·78
	Sambalpur (Urban) ..	..	..	..	..
2	Sundargarh (Rural) ..	1,812	1,321	491	37·17
	Sundargarh (Urban) ..	..	..	..	..
3	Keonjhar (Rural) ..	1,656	1,185	471	39·75
	Keonjhar (Urban) ..	..	..	..	..
4	Mayurbhanj (Rural) ..	2,534	1,837	697	37·94
	Mayurbhanj (Urban) ..	..	..	..	..
5	Balasore (Rural) ..	3,256	2,506	750	29·93
	Balasore (Urban) ..	..	..	..	..
6	Cuttack (Rural) ..	6,630	5,307	1,323	25·10
	Cuttack (Urban) ..	..	..	..	..
7	Dhenkanal (Rural) ..	2,244	1,780	464	26·07
	Dhenkanal (Urban) ..	..	..	..	..
8	Phulbani (Rural) ..	1,570	1,223	347	28·37
	Phulbani (Urban) ..	..	..	..	..
9	Balangir (Rural) ..	2,630	1,539	1,091	70·89
	Balangir (Urban) ..	..	..	..	..
10	Kalahandi (Rural) ..	2,054	1,284	770	59·97
	Kalahandi (Urban) ..	..	..	..	..
11	Ganjam (Rural) ..	3,527	3,021	506	16·36
	Ganjam (Urban) ..	..	..	..	..
12	Koraput (Rural) ..	3,935	2,468	1,467	59·44
	Koraput (Urban) ..	..	..	..	..
13	Puri (Rural) ..	3,369	2,765	604	21·84
	Puri (Urban) ..	..	..	..	..
	Total (Rural) ..	38,438	28,738	9,700	33·75
	Total (Urban) ..	..	..	..	..
		..	..	..	..

TABLE 13

## Villages having Scheduled Tribe population and availability of educational facilities

Percentage of Scheduled Tribes population in the village	Total No. of villages in the category	No. and percentage of villages with educational facilities			
		Pre-Primary	Primary	Middle	Secondary
(1)	(2)	(3)	(4)	(5)	(6)
Up to 45 ..	31,139	124 (0·40%)	18,070 (58·03%)	3,872 (12·43%)	1,406 (4·52%)
46—60 ..	3,333	9 (0·27%)	2,007 (60·22%)	206 (6·18%)	63 (1·89%)
61—75 ..	2,699	10 (0·37%)	1,575 (58·35%)	131 (4·85%)	20 (0·74%)
76—90 ..	3,194	5 (0·16%)	1,778 (55·67%)	94 (2·94%)	30 (0·94%)
Above 90 ..	6,627	9 (0·14%)	2,855 (43·08%)	60 (0·91%)	15 (0·23%)



TABLE 14

## Villages having Scheduled Caste population and availability of educational facilities

Percentage of Scheduled Caste population in the village	Total No. of villages in the category	No. and percentage of villages with educational facilities			
		Pre-Primary	Primary	Middle	Secondary
(1)	(2)	(3)	(4)	(5)	(6)
Up to 45 ..	43,337	153 (0·35%)	24,707 (57·01%)	4,172 (9·63%)	1,448 (3·34%)
46—60 ..	1,689	3 (0·18%)	855 (50·62%)	111 (6·6%)	54 (3·20%)
61—75 ..	604	1 (0·17%)	234 (38·74%) cent.	28 (4·64%)	15 (2·48%)
76—90 ..	474	0 (0·0%)	181 (38·19%)	6 (1·27%)	0 (0·0%)
Above 90 ..	888	..	308 (34·68%)	46 (5·19%)	17 (1·91%)

TABLE 15

Estimated Child Population, Enrolment of Students at the different Stages of Education (31-12-1973)

	Age-group 2-6	Age-group 6-11	Age-group 11-14	Age-group 14-18	Age-group 18+	Total	Remarks
(1)	(2)	(3)	(4)	(5)	(6)	(7)	(8)
Estimated Child population.	25,71,129	30,39,135	16,37,549	14,03,643	4,69,682	91,21,138	
Enrolment in primary sections (I-V).	5,33,531	16,25,589	1,09,724	..	..	22,68,844 (Boys 14,35,468) (Girls 8,33,376)	
Enrolment in middle sections (VI-VIII).	..	1,08,635	2,15,685	35,523	..	3,59,843 (Boys 2,61,792) (Girls 98,051)	
Enrolment in secondary sections (IX-X).	..	2,236	53,562	77,965	6,615	1,40,378 (Boys 1,13,700) (Girls 26,678)	
Enrolment in secondary sections (Class XI).	..	..	2,840	42,768	8,022	53,630 (Boys 43,738) (Girls 9,892)	
<b>Total</b>	5,33,531	17,36,460	3,81,811	1,56,256	14,637	28,22,695 (Boys 18,54,698) (Girls 9,67,997)	
Percentage of estimated child population enrolled.	20.75	57.13	23.31	11.13	3.11		

TABLE 16

Enrolment in Primary Stage Classes I to V (31-12-1973)

		Less than 6 years		6 to 11 years	
		Boys	Girls	Boys	Girls
		(1)	(2)	(3)	(4)
Rural	..	3,02,165	1,90,750	9,31,699	5,28,305
Urban	..	22,719	17,897	94,230	71,355
<b>Total</b>	..	<b>3,24,884</b>	<b>2,08,647</b>	<b>10,25,929</b>	<b>5,99,600</b>
<b>Grand Total</b>	..	<b>5,33,531</b>		<b>16,25,589</b>	

TABLE 16 (Conld.)

		11 years and above		Total		Total
		Boys	Girls	Boys	Girls	
		(5)	(6)	(7)	(8)	
Rural		77,426	20,471	13,11,290	7,39,526	20,50,816
Urban	..	7,229	4,598	1,24,178	93,850	2,18,028
<b>Total</b>	..	<b>84,655</b>	<b>25,069</b>	<b>14,35,468</b>	<b>8,33,376</b>	<b>22,68,844</b>
<b>Grand Total</b>	..	<b>1,09,724</b>		<b>22,68,844</b>		

TABLE 17

## Enrolment in Middle stage—Classes VI to VIII

(1)	Less than 10 years		10 to 11 years		11 to 14 years	
	Boys	Girls	Boys	Girls	Boys	Girls
	(2)	(3)	(4)	(5)	(6)	(7)
Rural ..	6,981	2,885	49,318	20,370	1,30,938	39,347
Urban ..	3,829	2,233	14,494	8,525	28,442	16,958
<b>Total ..</b>	<b>10,810</b>	<b>5,118</b>	<b>63,812</b>	<b>28,895</b>	<b>1,59,380</b>	<b>56,305</b>
<b>Grand Total ..</b>	<b>15,928</b>		<b>92,707</b>		<b>2,15,685</b>	

TABLE 17 (Conld.)

(1)	14 years and above		Total		
	Boys	Girls	Boys	Girls	Total
	(8)	(9)	(10)	(11)	(12)
Rural ..	22,329	4,723	2,09,566	67,325	2,76,891
Urban ..	5,461	3,010	52,226	30,726	82,952
<b>Total ..</b>	<b>27,790</b>	<b>7,733</b>	<b>2,61,792</b>	<b>98,051</b>	<b>3,59,843</b>
<b>Grand Total ..</b>	<b>35,523</b>		<b>3,59,843</b>		

TABLE 18

## Enrolment in High School stage—Classes IX to X

(1)	Less than 11 years		11 to 14 years		14 to 18 years	
	Boys (2)	Girls (3)	Boys (4)	Girls (5)	Boys (6)	Girls (7)
Rural ..	1,282	272	29,562	4,985	48,179	6,699
Urban ..	580	102	13,009	6,006	15,470	7,617
Total ..	1,862	374	42,571	10,991	63,649	14,316
Grand Total ..	2,236		53,562		77,965	

TABLE 18 (Conld.)

(1)	18 years and above		Total		Total (12)
	Boys (8)	Girls (9)	Boys (10)	Girls (11)	
Rural ..	3,943	495	82,966	12,451	95,417
Urban ..	1,675	502	30,734	14,227	44,961
Total ..	5,618	997	1,13,700	26,678	1,40,378
Grand Total	6,615		1,40,378		

TABLE 19  
Enrolment in High School Stage--Classes XI to XII

(1)	Less than 14 Years		14 to 18 Years	
	Boys	Girls	Boys	Girls
	(2)	(3)	(4)	(5)
Rural	1,548	334	23,901	4,054
Urban	814	144	10,180	4,633
Total	2,362	478	34,081	8,687
	2,840		42,768	

TABLE 19 (Contd.)

(1)	18 Years and above		Total		Total (10)
	Boys	Girls	Boys	Girls	
	(6)	(7)	(8)	(9)	
Rural	5,950	302	31,399	4,690	36,089
Urban	1,345	425	12,339	5,202	17,541
Total	7,295	727	43,738	9,892	
	8,022		53,630		53,630

TABLE 20  
Percentage increase of Boys, Girls and Total in the third survey over second Survey  
PRIMARY EDUCATION

Area	Second Survey (31-12-1965)					
	Boys		Girls		Total	
	Number	Per cent	Number	Per cent	Number	Per cent
(1)	(2)	(3)	(4)	(5)	(6)	(7)
Rural ..	10,72,099	66.4	5,42,615	33.6	16,14,714	100
Urban ..	80,544	60.0	56,226	40.0	1,36,770	100
Total ..	11,52,643	65.8	5,98,841	34.2	17,51,484	100

Table 20 (Contd.)

Area	Third Survey (31-12-1973)					
	Boys		Girls		Total	
	Number	Per cent	Number	Per cent	Number	Per cent
(1)	(8)	(9)	(10)	(11)	(12)	(13)
Rural ..	13,11,290	63.94	7,39,526	36.06	20,50,816	100
Urban ..	1,24,178	56.96	93,850	43.04	2,18,028	100
Total ..	14,35,468	63.27	8,33,376	36.73	22,68,844	100

Table 20 (Contd.)

Area	Per cent increase		
	Boys	Girls	Total
	(14)	(15)	(16)
Rural ..	22.31	36.29	27.01
Urban ..	54.17	66.62	59.41
Total ..	24.53	39.16	29.53

TABLE 21  
Middle School Education—Classes VI to VIII

Area	Second Survey (31-12-1965)					
	Boys		Girls		Total	
	Number	Per cent	Number	Per cent	Number	Per cent
(1)	(2)	(3)	(4)	(5)	(6)	(7)
Rural ..	1,73,787	85.03	30,608	14.97	2,04,385	100
Urban ..	35,563	69.84	15,361	30.16	50,924	100
Total ..	2,09,350	82.00	45,969	18.00	2,55,319	100

Table 21 (Contd.)

Area	Third Survey (31-12-1973)					
	Boys		Girls		Total	
	Number	Per cent	Number	Per cent	Number	Per cent
(1)	(8)	(9)	(10)	(11)	(12)	(13)
Rural ..	2,09,566	75.68	67,325	24.32	2,76,891	100
Urban ..	52,226	62.96	30,726	37.04	82,952	100
Total ..	2,61,792	72.75	98,051	27.27	3,59,843	100

Table 21 (Contd.)

Area	Per cent increase		
	Boys	Girls	Total
(1)	(14)	(15)	(16)
Rural ..	20.58	119.96	35.46
Urban ..	46.85	100.03	62.89
Total ..	25.05	113.29	40.93



TABLE 22  
High School Education Classes IX to X

Area	Secondary Survey (31-12-1965)					
	Boys		Girls		Total	
	Number	Per cent	Number	Per cent	Number	Per cent
(1)	(2)	(3)	(4)	(5)	(6)	(7)
Rural ..	51,579	93.3	3,702	6.7	55,281	100
Urban ..	17,587	77.15	5,208	22.85	22,795	100
Total ..	69,166	88.59	8,910	11.41	78,076	100

Table 22 (Contd.)

Area	Third Survey (31-12-1973)					
	Boys		Girls		Total	
	Number	Per cent	Number	Per cent	Number	Per cent
(1)	(8)	(9)	(10)	(11)	(12)	(13)
Rural ..	82,966	86.95	12,451	13.05	95,417	100
Urban ..	30,734	68.36	14,227	31.64	44,961	100
Total ..	113,700	80.99	26,678	19.01	140,378	100

Table 22 (Contd.)

Area	Per cent increase		
	Boys	Girls	Total
	(14)	(15)	(16)
Rural ..	60.85	236.33	72.61
Urban ..	74.75	173.18	97.24
Total ..	64.38	199.41	79.79

TABLE 23

## High and Higher Secondary Education (Classes XI to XII)

Area	Second Survey (31-12-1965)					
	Boys		Girls		Total	
	Number	Per cent	Number	Per cent	Number	Per cent
(1)	(2)	(3)	(4)	(5)	(6)	(7)
Rural ..	13,805	94.07	871	5.93	14,676	100
Urban ..	6,390	78.16	1,786	21.84	8,176	100
Total ..	20,195	88.37	2,657	11.63	22,852	100

Table 23 (Contd.)

Area	Third Survey (31-12-1973)					
	Boys		Girls		Total	
	Number	Per cent	Number	Per cent	Number	Per cent
(1)	(8)	(9)	(10)	(11)	(12)	(13)
Rural ..	31,399	87.01	4,690	12.99	36,089	100
Urban ..	12,339	70.34	5,202	29.66	17,541	100
Total ..	43,738	81.55	9,892	18.45	53,630	100

Table 23 (Contd.)

Area	Per cent increase		
	Boys	Girls	Total
	(14)	(15)	(16)
Rural ..	127.44	438.46	145.90
Urban ..	93.09	191.27	114.54
Total ..	116.57	279.83	134.68

TABLE 24

## Districtwise Enrolment of students at the primary stage

Name of the district	Population in the age-group 6 to 11 (1973)	Total enrolment in the primary stage, 1973	Percentage of enrolment to child population of age-group 6 to 11	Rank
(1)	(2)	(3)	(4)	(5)
1. Sambalpur ..	2,55,411	1,84,744	72.33	6
2. Sundargarh ..	1,39,232	1,07,618	77.29	4
3. Keonjhar ..	1,33,276	93,572	70.21	7
4. Mayurbhanj ..	1,96,235	1,05,770	53.89	13
5. Balasore ..	2,59,428	2,53,748	97.81	1
6. Cuttack ..	5,29,893	4,67,998	88.32	2
7. Dhenkanal ..	1,84,090	1,24,355	67.55	9
8. Phulbani ..	85,293	62,263	72.99	5
9. Balangir ..	1,75,639	1,13,658	64.71	11
10. Kalahandi ..	1,63,189	98,416	60.31	12
11. Ganjam ..	3,15,510	2,13,431	67.64	8
12. Koraput ..	2,84,063	1,86,333	65.59	10
13. Puri ..	3,17,876	2,56,938	80.83	3
Total State ..	30,39,135	22,68,844	74.65	..

TABLE 25

## Comparison of District Population ratio and District enrolment ratio at Primary Stage

District	Total estimated population as on 31-12-1973	Percentage of District population to State population	Enrolment at Primary stage (3rd Survey) as on 31-12-1973	Enrolment as a percentage of State enrolment	Difference between (Col. 5-Col. 3)
(1)	(2)	(3)	(4)	(5)	(6)
1. Sambalpur	.. 19,64,794	8.41	1,84,744	8.14	(-)-0.27
2. Sundargarh	.. 10,75,791	4.60	1,07,618	4.74	(+)-0.14
3. Keonjhar	.. 10,25,312	4.39	93,572	4.12	(-)-0.27
4. Mayurbhanj	.. 15,09,556	6.46	1,05,770	4.67	(-)-1.79
5. Balasore	.. 19,97,675	8.55	2,53,748	11.18	(+)-2.63
6. Cuttack	.. 40,76,155	17.45	4,67,998	20.62	(+)-3.17
7. Dhenkanal	.. 13,88,973	5.94	1,24,355	5.48	(-)-0.46
8. Phulbani	.. 6,56,177	2.89	62,263	2.74	(-)-0.15
9. Balangir	.. 13,50,869	5.78	1,13,658	5.01	(-)-0.77
10. Kalahandi	.. 12,52,675	5.36	98,416	4.34	(-)-1.02
11. Ganjam	.. 24,27,138	10.39	2,13,431	9.42	(-)-0.97
12. Koraput	.. 21,95,134	9.35	1,86,333	8.21	(-)-1.14
13. Puri	.. 24,45,205	10.46	2,56,938	11.33	(+)-0.87
Total (State)	.. 2,33,55,455	100.03 or 100.00	22,6 .844	100.00	

TABLE 26

## Enrolment in Primary Classes as percentage of Enrolment in Class I

Sl. No.	District	Class I			Class II			Class III			Class IV			Class V		
		Boys	Girls	Total	B	G	T	B	G	T	B	G	T	B	G	T
(1)	(2)	(3)	(4)	(5)	(6)	(7)	(8)	(9)	(10)	(11)	(12)	(13)	(14)	(15)	(16)	(17)
1	Sambalpur ..	100	100	100	56	49	53	41	33	38	29	20	26	22	15	19
2	Sundargarh ..	100	100	100	51	44	48	39	31	36	34	29	31	28	19	24
3	Keonjhar ..	100	100	100	45	35	41	30	22	27	24	15	20	18	12	16
4	Mayurbhanj ..	100	100	100	48	42	46	34	26	32	28	21	25	22	16	20
5	Balasore ..	100	100	100	86	87	86	69	66	68	51	44	48	42	34	38
6	Cuttack ..	100	100	100	82	69	76	65	52	59	51	36	44	42	27	35
7	Dhenkanal ..	100	100	100	52	44	49	38	30	35	28	20	25	21	15	19
8	Phulbani ..	100	100	100	55	44	51	37	24	32	17	9	14	12	6	10
9	Balangir ..	100	100	100	49	27	45	34	22	30	20	11	17	15	9	12
10	Kalahandi ..	100	100	100	38	27	35	24	16	22	13	8	12	10	6	9
11	Ganjam ..	100	100	100	66	64	66	50	42	47	31	24	28	24	17	21
12	Koraput ..	100	100	100	49	37	45	28	21	26	10	9	9	7	7	7
13	Puri ..	100	100	100	74	74	74	59	60	59	44	38	41	36	28	33
<b>State Total ..</b>		100	100	100	61	55	58	45	38	42	31	25	29	24	19	22

TABLE 27

No. of Schools having parent teacher associations and involved in Community Co-operation

		Primary Schools			Middle Schools			Secondary Schools		
		Having parent teacher association.	Where school participate in community activities.	Where community participate in school activities.	Having parent teacher association.	Where school participates in community activities.	Where community participate in school activities.	Having parent teacher association.	Where school participates in community activities.	Where Community participate in school activities.
(1)	(2)	(3)	(4)	(5)	(6)	(7)	(8)	(9)	(10)	
Rural	..	2,093	3,779	7,898	417	671	1,443	207	290	714
Urban	..	128	167	466	91	90	122	75	86	125
Total	..	1,221	3,946	8,364	508	761	1,765	282	376	839

TABLE 28

No. of pupils owning languages and/or Arithmetic Text Books in Primary Schools

Areas	Total No. of pupils			No. and percentage of students owning text books			
	Boys	Girls	Total	Boys		Girls	
				No.	Per cent.	No.	Per cent.
(1)	(2)	(3)	(4)	(5)	(6)	(7)	(8)
Rural ..	1,311,290	739,526	2,050,816	821,133	62.62	498,006	67.35
Urban ..	124,178	93,850	218,028	104,584	84.22	76,475	81.48
Total ..	1,435,468	833,376	2,268,844	925,717	64.48	574,481	68.93

Table 28—Concl'd.

Total		No. of Scheduled Caste students owning text books			No. of Scheduled Tribes students owning text books		
No.	Per cent.	Boys	Girls	Total	Boys	Girls	Total
(9)	(10)	(11)	(12)	(13)	(14)	(15)	(16)
1,319,139	64.32	89,722	45,582	135,307	100,394	44,534	144,928
181,059	82.64	6,765	3,454	10,219	4,709	2,668	7,377
1,500,198	66.12	96,487	49,036	145,523	105,103	47,202	152,305



**Dr. D. C. Misra, Director, Dr. S. C. Dash, Vice-Principal and Shri B.M. Das, Assistant Survey Officer, presenting the synopsis to Shri H. N. Das Mohapatra, Secretary, to Government.**



---

**THIRD EDUCATIONAL SURVEY IN ACTION**

---



Teachers of Capital Girls' High School, Ashoknagar, Bhubaneswar filling up the Teacher Information Blank.



Prof. B. Das, Director, S. I. E. flanked by Dr. D. C. Misra and Shri B. M. Das inaugurating the punching programme at the office of the Deputy Director, Census, Cuttack.



Prof. B. Das and Dr. D. C. Misra supervising the scrutiny of various tables at the S. I. E. To their left are Dr. S. C. Dash, Vice Principal, S. I. E. Shri B. M. Das, Assistant Survey Officer and Shri P. C. Rout, District Survey Officer.



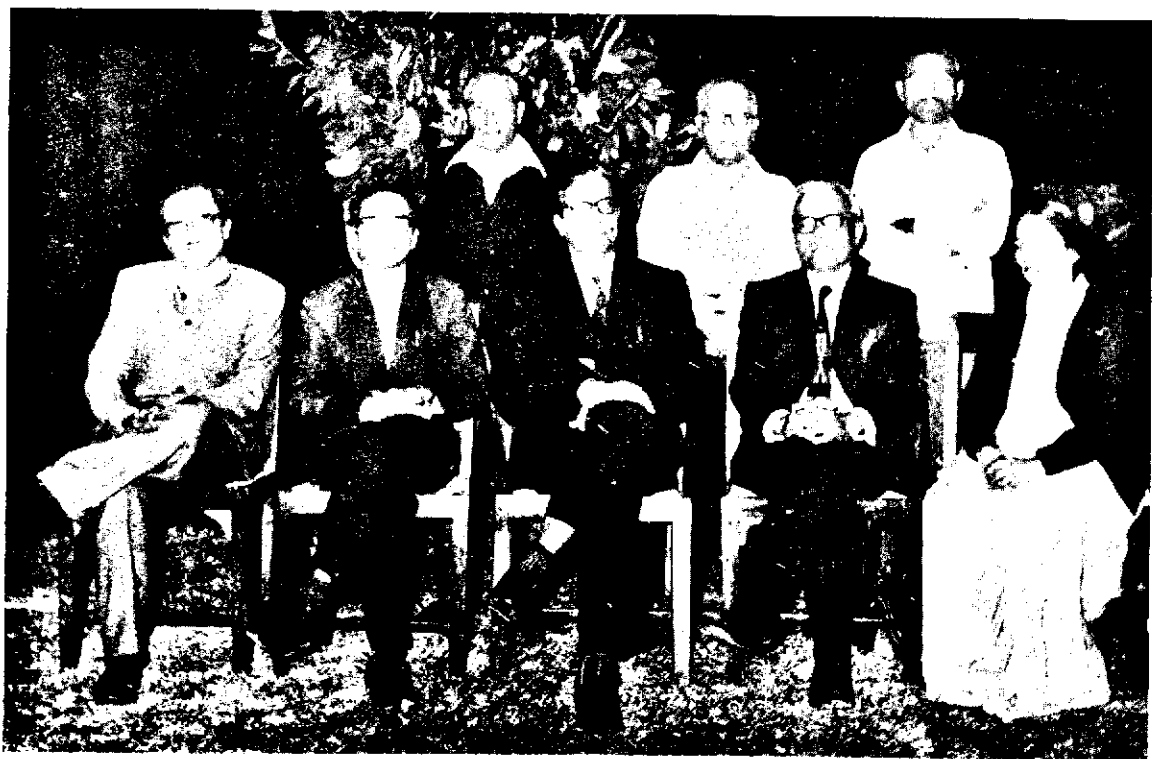
Dr D. C. Misra, D. P. I. (H. E.), Shri D. Panigrahi, Joint D. P. I. (Schools) and Shri D. D. Jena, Deputy D. P. I., (Planning) with other officers and staff of the State Survey Unit.



Members of the Advisory Committee discuss the findings of the survey



Work-experience gaining momentum in Orissa



Dr. R. G. Misra, Head of the Survey Unit, N. C. E. R. T. with the Officers of the State Survey Unit.



Shri Ch. U. N. Misra, Joint Secretary to Government, Finance Department and Member, State Advisory Committee on Educational Survey.



Shri D. Panigrahi, Joint D. P. I. (School), looking at the State Tables

## ANNEXURE I

## Districtwise population and area of the State

Name of the district	Area in square Km.	Total population	Rural population	Urban population	Rank
(1)	(2)	(3)	(4)	(5)	(6)
1. Sambalpur ..	17,570	1,844,898	1,623,121	221,777	V
2. Sundargarh ..	9,675	1,030,758	791,073	239,685	XI
3. Keonjhar ...	8,240	955,514	888,167	67,347	XII
4. Mayurbhanj ..	10,412	1,434,200	1,394,249	39,951	VII
5. Balasore ..	6,394	1,830,504	1,730,350	100,154	VI
6. Cuttack ..	11,211	3,827,678	3,522,055	305,623	I
7. Dhenkanal ..	10,826	1,293,914	1,242,102	51,812	IX
8. Phulabani ..	11,070	621,675	602,107	19,568	XIII
9. Balangir ..	8,903	1,263,657	1,176,994	86,663	VIII
10. Kalahandi ..	11,835	1,163,869	1,107,316	56,553	X
11. Ganjam ..	12,527	2,293,808	2,033,952	259,856	II
12. Koraput ..	27,020	2,043,281	1,876,02	167,59	IV
13. Puri ..	10,159	2,340,859	2,111,712	229,147	III
<b>Total ..</b>	<b>155,842</b>	<b>21,944,615</b>	<b>20,099,220</b>	<b>1,845,395</b>	

Source—1971 Census of India

## Districtwise literacy situation in Orissa

Name of district	Literacy rate (per cent)		Rate of growth of literacy in 1961—1971
	1961	1971	
(1)	(2)	(3)	(4)
1. Sambalpur ..	22.93	27.12	18.27
2. Sundargarh ..	19.71	26.47	34.30
3. Keonjhar ..	17.66	21.25	20.33
4. Mayurbhanj ..	14.18	18.05	27.29
5. Balasore ..	29.49	33.71	14.31
6. Cuttack ..	29.82	36.43	22.17
7. Dhenkanal ..	23.45	27.76	18.38
8. Phulbani ..	17.69	19.79	11.87
9. Balangir ..	14.59	19.92	36.53
10. Kalahandi ..	11.51	13.85	20.33
11. Ganjam ..	21.32	24.42	14.54
12. Koraput ..	8.14	10.58	29.98
13. Puri ..	29.49	35.34	19.84
ORISSA ..	21.66	26.18	20.87

Source—1971 Census

## Districtwise number of Villages and Towns in Orissa

District	Total No. of villages	Total No. of inhabited villages	Total No. of towns **	No. of inhabited villages with population less than	
				200	500
(1)	(2)	(3)	(4)	(5)	(6)
1. Sambalpur ..	3,691	3,390	10	1,190	2,286
2. Sundargarh ..	1,712	1,621	5	439	1,081
3. Keonjhar ..	2,082	2,009	3	539	1,405
4. Mayurbhanj ..	,982	3,712	4	1,246	2,807
5. Balasore ..	4,376	3,812	3	1,317	2,672
6. Cuttack ..	6,627	6,027	8	1,376	3,483
7. Dhenkaal ..	3,157	2,606	4	1,016	1,815
8. Phulbani ..	4,635	4,397	2	3,505	4,253
9. Balangir ..	2,752	2,523	6	602	1,682
10. Kalahandi ..	2,837	2,653	5	1,117	1,850
11. Ganjam ..	4,757	4,223	16	2,001	2,929
12. Koraput ..	6,124	5,683	9	2,843	4,569
13. Puri ..	4,907	4,336	8	1,357	2,939
Orissa ..	51,639	46,992	83 **	18,548 (39.5)	33,771 (71.9)

\*\* Number of towns includes Census town also

Source—1971 Census



## Districtwise Tribal Blocks in Orissa and Age-group Population in Them

District	Number of Tribal Blocks	Age-group population	
		6-11	11-14
(1)	(2)	(3)	(4)
Sambalpur	3	16,822	8,934
Sundargarh	17	81,452	41,994
Keonjhar	8	51,079	27,143
Mayurbhanj	26	144,775	76,920
Balasore	1	9,347	4,966
Phulbani	12	41,640	21,887
Kalahandi	2	8,163	4,337
Koraput	42	198,624	106,878
Total Sub-Plan Area in the State	116	578,946	309,358

Source—(T. & R. W. Department) Sub-Plan documents

## Literacy in Rural and Urban Areas in Orissa\*

	Rural	Urban	Total
Population	20,099,220	1,845,395	21,944,615
Literate population	4,841,184	904,215	5,745,399
Percentage of literate population to the total rural/urban population.	24.09	49.00	26.18

\*Source—1971 Census

## Districtwise Population of Scheduled Castes and Scheduled Tribes and Growth Rate

District	Population		Growth-rate (1961—1971)	
	Scheduled Castes	Scheduled Tribes	Scheduled Castes	Scheduled Tribes
(1)	(2)	(3)	(4)	(5)
1. Sambalpur ..	2,87,998	5,19,046	+ 17.56	+ 18.12
2. Sundargarh ..	82,692	5,50,401	+ 13.07	+ 24.83
3. Keonjhar ..	1,07,784	4,48,675	+ 4.70	+ 28.05
4. Mayurbhanj ..	1,03,713	8,39,835	— 0.54	+ 15.08
5. Balasore ..	3,38,802	1,29,192	+ 27.01	+ 34.57
6. Cuttack ..	6,91,180	1,10,746	+ 26.15	+ 28.98
7. Dhenkanal ..	2,16,887	1,66,998	+ 15.89	+ 16.39
8. Phulbani ..	1,17,987	2,50,605	+ 18.70	+ 17.07
9. Balangir ..	2,08,430	2,49,131	+ 11.21	+ 12.77
10. Kalahandi ..	1,99,151	3,40,541	+ 11.05	+ 6.17
11. Koraput ..	2,74,115	11,51,231	+ 38.71	+ 20.63
12. Ganjam ..	3,65,284	2,28,945	+ 18.48	+ 21.78
13. Puri ..	3,16,831	86,591	+ 19.73	+ 28.33
<b>ORISSA ..</b>	<b>33,10,854</b>	<b>50,71,937</b>	<b>+ 19.79</b>	<b>+ 20.08</b>

Source—1971 Census

**Literacy rate among Scheduled Castes and Scheduled Tribes in Orissa**

(Literacy rate including 0-4 age-group population)

Population	1961			1971			Percentage increase of literacy (1961—71)		
	Persons	Males	Females	Persons	Males	Females	Persons	Males	Females
(1)	(2)	(3)	(4)	(5)	(6)	(7)	(8)	(9)	(10)
General population.	21.7	34.7	8.6	26.2	38.3	13.9	20.7	10.4	61.6
Scheduled Castes population.	11.6	19.8	3.4	15.6	26.0	5.2	34.5	31.3	52.9
Scheduled Tribe population.	7.4	13.0	1.8	9.5	16.4	2.6	28.4	26.2	44.4

Source -1971 Census

## DISTRICT-WISE NUMBER OF SCHOOLS IN ORISSA AS STOOD ON 31-12-1973

District	Primary Schools	Middle Schools only	Middle Schools with primary sections	Total number of Middle Schools	High Schools only
	I to III & I to V	VI & VII	I to VII & IV to VII		VIII to XI
(1)	(2)	(3)	(4)	(5)	(6)
1. Sambalpur	2,683	364	32	396	101
2. Sundargarh	1,42	197	37	234	68
3. Keonjhar	1,313	240	18	258	65
4. Mayurbhanj	2,041	329	30	359	106
5. Balasore	2,386	550	70	620	190
6. Cuttack	5,023	942	142	1,084	370
7. Dhenkanal	1,833	276	23	299	72
8. Phulbani	1,443	82	14	96	17
9. Balangir	2,323	211	11	222	69
10. Kalahandi	1,849	137	11	148	41
11. Ganjam	3,109	258	9	267	76
12. Koraput	3,709	135	24	159	38
13. Puri	2,638	440	60	500	133
<b>Total</b>	<b>31,822</b>	<b>4,161</b>	<b>481</b>	<b>4,642</b>	<b>1,346</b>

District	High Schools with middle sections	High Schools with Primary and Middle sections	Total number of High Schools	Higher Secondary Schools only	Higher Secondary Schools with Middle and Primary sections	Total number of Higher Secondary Schools
	VI to XI	I to XI VI to XI IV to XI		VIII to XII	I to XII	
(1)	(7)	(8)	(9)	(10)	(11)	(12)
1. Sambalpur ..	34	7	142	1	..	1
2. Sundargarh ..	36	2	106	..	..	..
3. Keonjhar ..	16	4	85	..	..	..
4. Murumbhanj ..	26	2	134	..	..	..
5. Balasore ..	53	7	250	1	..	1
6. Cuttack ..	118	35	523	2	..	2
7. Debaganal ..	31	9	112	1	..	1
8. Phulbani ..	11	3	31	..	..	..
9. Balangir ..	15	1	85	..	..	..
10. Kalahandi ..	16	..	57	..	..	..
11. Ganjam ..	64	11	151	2	1	3
12. Koraput ..	23	6	67	1	..	1
13. Puri ..	83	15	231	1	4	5
<b>Total ..</b>	<b>526</b>	<b>102</b>	<b>1,974</b>	<b>9</b>	<b>5</b>	<b>14</b>

## CONVERSION TABLE

( Square feet into square metres )

Square feet	0	1	2	3	4	5	6	7	8	9
0	..	0.1	0.2	0.3	0.4	0.5	0.6	0.7	0.7	0.8
10	..	0.9	1.0	1.1	1.2	1.3	1.4	1.5	1.6	1.8
20	..	1.9	2.0	2.0	2.1	2.2	2.3	2.4	2.5	2.7
30	..	2.8	2.9	3.0	3.1	3.2	3.3	3.3	3.5	3.6
40	..	3.7	3.8	3.9	4.0	4.1	4.2	4.3	4.4	4.6
50	..	4.6	4.7	4.8	4.9	5.0	5.1	5.2	5.3	5.5
60	..	5.6	5.7	5.8	5.9	6.0	6.0	6.1	6.2	6.4
70	..	6.5	6.6	6.7	6.8	6.9	7.0	7.1	7.2	7.3
80	..	7.4	7.5	7.6	7.7	7.8	7.9	8.0	8.1	8.3
90	..	8.4	8.5	8.5	8.6	8.7	8.8	8.9	9.0	9.2

**Example**

Suppose a classroom is  $12' \times 12'$ , i. e., its area is 144 squares feet. One wants to find out how much square metre this amounts to. From the conversion table it can be seen that—

(i) 100 square feet = 9.0 square metre [Multiplying 0.9 (which equals to 10 square feet) by 10].

and (ii) 44 square feet = 4.1 square metre (by entering the row against 40 and coming up to column under 4).

Now, adding both (i) and (ii) one can have  
 144 square feet =  $9.0 + 4.1$  square metre  
 = 13.1 square metre.

## Statewise estimated percentage of child population (1974) in different age groups

State/Union Territory	2 to below 6		6 to below 11		11 to below 14	
	Male	Female	Male	Female	Male	Female
(1)	(2)	(3)	(4)	(5)	(6)	(7)
1. Andhra Pradesh ..	11.0	10.9	12.7	12.4	7.0	7.0
2. Assam ..	13.7	14.2	14.5	15.2	7.5	8.0
3. Bihar ..	12.0	11.8	13.5	13.2	7.5	7.4
4. Gujarat ..	12.7	12.8	14.1	14.2	7.5	7.5
5. Haryana ..	12.9	13.4	14.4	14.8	7.5	7.7
6. Himachal Pradesh ..	12.1	12.8	13.8	13.9	7.0	7.2
7. Jammu and Kashmir ..	11.9	13.2	12.8	13.7	6.9	7.1
8. Karnatak ..	11.9	11.8	13.4	13.3	7.3	7.3
9. Kerala ..	11.9	11.2	13.5	12.8	7.2	6.9
10. Madhya Pradesh ..	11.7	11.8	13.3	13.3	7.4	7.5
11. Maharashtra ..	11.5	11.6	13.2	13.2	7.2	7.3
12. Manipur ..	14.4	12.1	15.5	13.7	7.7	7.5
13. Meghalaya ..	13.6	14.2	14.4	15.3	7.5	8.1
14. Nagaland ..	12.5	11.6	13.9	13.2	7.3	7.6
15. Orissa ..	11.7	11.4	13.3	12.9	7.1	7.1

State/Union Territory		14 to below 17		17 to below 18	
		Male	Female	Male	Female
(1)		(8)	(9)	(10)	(11)
1. Andhra Pradesh	--	6.3	6.4	2.0	2.0
2. Assam	..	6.5	7.1	2.0	2.2
3. Bihar	..	6.9	6.8	2.2	2.2
4. Gujarat	..	6.7	6.7	2.1	2.1
5. Haryana	..	6.6	6.7	2.1	2.1
6. Himachal Pradesh	..	6.3	6.4	2.0	2.0
7. Jammu & Kashmir	--	6.3	6.4	2.0	2.1
8. Karnataka	..	6.5	6.6	2.0	2.1
9. Kerala	..	6.5	6.3	2.1	2.0
10. Madhya Pradesh	..	6.8	6.8	2.1	2.2
11. Maharashtra	..	6.5	6.6	2.0	2.2
12. Manipur	..	6.5	6.7	1.9	2.1
13. Meghalaya		6.5	7.1	2.1	2.0
14. Nagaland	..	6.6	6.8	2.1	2.2
15. Orissa	..	6.3	6.5	2.0	2.1



TOTAL NUMBER OF DISTRICTS, BLOCKS, MUNICIPALITIES, N. A. Cs.  
IN THE STATE OF ORISSA

Districts	..	13
Blocks	..	314
Municipalities	..	26
N. A. Cs.	..	57

Serial No.	Name of the Districts	District Code Number	Blocks	Towns	Total
(1)	(2)	(3)	(4)	(5)	(6)
1	Sambalpur	.. 01	29	(4+6)=10	39
2	Sundargarh	.. 02	17	(3+2)= 5	22
3	Keonjhar	.. 03	13	(2+1)= 3	16
4	Mayurbhanj	.. 04	26	(1+3)= 4	30
5	Balasore	.. 05	19	(1+2)= 3	22
6	Cuttack	.. 06	41	(4+4)= 8	49
7	Dhenkanal	.. 07	16	(2+2)= 4	20
8	Phulbani	.. 08	15	(0+2)= 2	17
9	Balangir	.. 09	20	(2+4)= 6	26
10	Kalahandi	.. 10	18	(1+4)= 5	23
11	Koraput	.. 11	42	(3+6)= 9	51
12	Ganjam	.. 12	29	(2+14)=16	45
13	Puri	.. 13	29	(1+7)= 8	37
Total		.. ..	314	(26+57)=83	397

## INSPECTORATE OF SCHOOL EDUCATION IN ORISSA

The 13 districts of the State have been divided into 15 (Fifteen) Circles for the purpose of School Administration in the State. Cuttack district being the largest has three circles. Each circle is under the charge of one Inspector of Schools who is assisted by the District Inspectors of Schools. A list showing the names of the Circle Inspectors of Schools is given below.

2. At present there are 40 educational districts in the State and each district is in charge of a District Inspector of Schools. But there are at present 56 Revenue Subdivisions in the State. In order to cope with the massive programme of coverage, and ensuring qualitative improvement in education during the 5th Plan period, the territorial jurisdiction of educational district has been decided to be made co-terminus with those of the Revenue Subdivisions of the State.

### PERSONNEL IN THE INSPECTORATE

District	Name of the Circle Inspectors of Schools.
1. Sambalpur	.. Shri S. R. Dube
2. Sundargarh	.. Shri D. N. Pradhan
3. Keonjhar	.. Miss Alaka Jena
4. Mayurbhanj	.. Shri Biswaranjan Mohapatra
5. Balasore	.. Shri Baman Charan Mishra
6. Cuttack-I circle	.. Shri R. K. Mohanty
II circle	.. Shri K. C. Mohanty
III circle	.. Shri J. Acharya
7. Dhenkanal	.. Shri P. K. Das
8. Boudh-Kandamal (Phulbani)	Srimati Swantana Das
9. Balangir	.. Shri Radhakanta Misra
10. Kalahandi	.. Shri M. J. R. Patnaik
11. Koraput	.. Shri Basant Kumar Das
12. Ganjam	.. Shri Gajendra Nath Dash
13. Puri	.. Shri Siba Ram Pattanaik

**Members of the State Advisory Committee on Third  
All-India Educational Survey**

- |   |                                  |
|---|----------------------------------|
| 1. Shri H. N. Das Mohapatra, I. A. S., Secretary, Education and Youth Services Department.  | Chairman                         |
| 2. Prof. Bidhubhusan Das, Director, State Institute of Education Orissa, Bhubaneswar.   | Member                           |
| 3. Dr. Debeendra Chandra Mishra, Director of public Instruction ( H. E. ), Orissa, and <i>Ex Officio</i> , Director, Third All-India Educational Survey, Orissa, Bhubaneswar. | Member                           |
| 4. Shri D. Panigrahi, Joint Director of Public Instruction (Schools), Orissa, Bhubaneswar.  | Member                           |
| 5. Shri H. P. Mohapatra, O. A. S. (I), Special Officer-cum-Deputy Secretary to Government, Education and Youth Services Department, Orissa.                                   | Member                           |
| 6. Shri Choudhury U. N. Misra, O. S. S. Joint Secretary to Government, Finance Department, Orissa.  | Member                           |
| 7. Shri B. B. Misra, Deputy Director, Tribal and Rural Welfare Department, Orissa.  | Member                           |
| 8. Shri S. Rajangam, O. A. S. (I), Research Officer-cum-Under Secretary to Government, P. & C. (PI) Department, Orissa.   | Member                           |
| 9. Shri B. B. Das, Deputy Director, Bureau of Statistics and Economics, Orissa, Bhubaneswar.  | Member                           |
| 10. Prof. D. D. Jena, Deputy Director of Public Instruction (Planning and Budget) Orissa.   | Member                           |
| 11. Shri N. Patnaik, Assistant State Survey Officer, Office of the D. P. I. (H. E.) Orissa, Bhubaneswar.  | Member                           |
| 12. Shri Braja Mohan Das, Assistant State Survey Officer, Office of the D. P. I. ( H. E. ), Orissa, Bhubaneswar,  | Member-Secretary<br>and Convenor |

## ANNEXURE

**Number of Schedules being canvassed in connection with the Third All-India Educational Survey**

<b>Serial No.</b>	<b>Title of the Blank</b>
1.	Village Information Blank
2.	Urban Information Blank
3.	School Information Blank-A
4.	School Information Blank-B
5.	School Finance
6.	Teacher Information Blank
7.	Information Blank for Pre-primary Schools
8.	Information Blank for Coaching Institutions
9.	Information Blank for other Institutions like Sanskrit Pathshalas, Maktabas, Madrassahs, etc.
10.	Information Blank for Special Institutions for the Physically Handicapped
11.	Examination Results
12.	Information Blank for P.U.C.
13.	Information Blank for Heads of Institutions
14.	Information Blank for out of School Education
15.	Information Blank for Correspondence Courses
16.	Information Blank for Hostels in Tribal areas
17.	Supplementary Information Blanks for Tribal Schools
18.	Information Blank for Primary Teacher Training Institutions
19.	Information Blank for Teachers of the Primary Teachers Training Institutions
20.	Information Blank for Pre-primary Training Institutions
21.	Information Blank for Institutions of Physical Education
22.	Information Blank for Cultural statistics
23.	Hostel facilities for Scheduled Castes