

A GUIDE  
TO  
SERINGAPATAM

PUBLISHED FOR  
THE GOVERNMENT OF MYSORE

BY

DR. M. H. KRISHNA, M.A., D.LIT. (Lond.),  
*Director of Archæology in Mysore*



FOURTH EDITION

MYSORE

PRINTED BY THE ASST. SUPDT. AT THE GOVT. BRANCH PRESS

1947

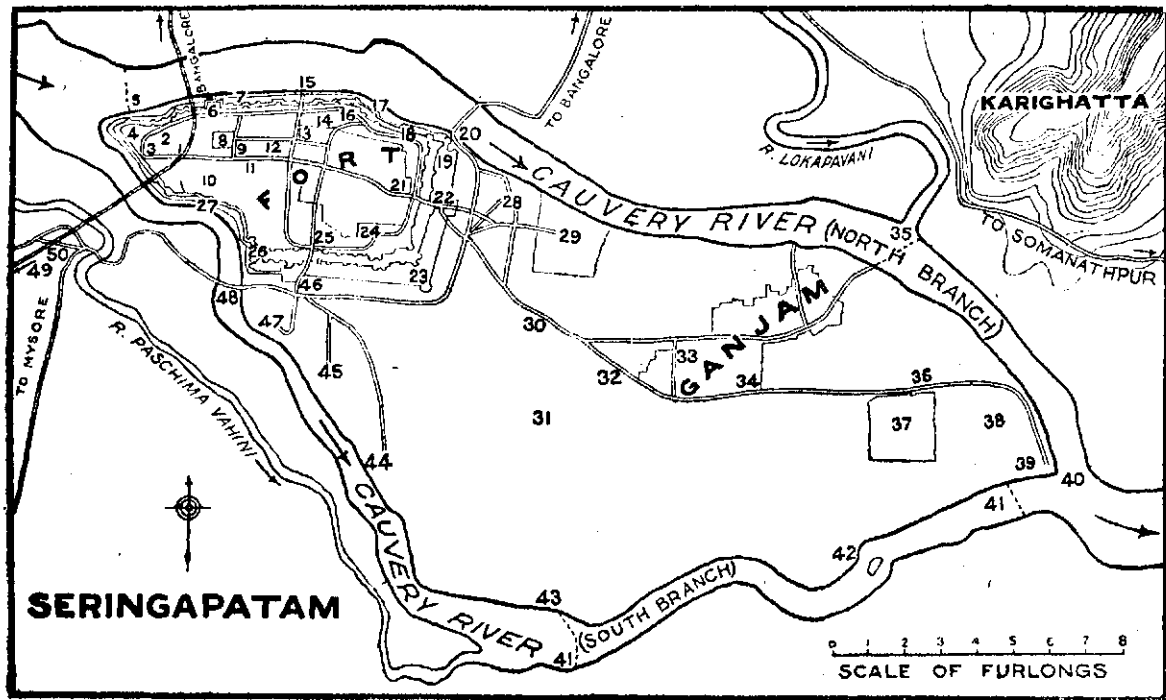
# CONTENTS

	PAGE
<b>INTRODUCTION</b> ... ..	1-2
Position and routes ... ..	1
General Description ... ..	2
<b>HISTORY</b> ... ..	2-5
Mythology, Hoysala ... ..	2
Vijayanagar, Mysore Rājas, Hyder, Tipu Sultan ... ..	3
Fall of Seringapatam. A Decaying Taluk Town ... ..	4
<b>PLACES OF INTEREST</b> ... ..	5-23
Seringapatam Railway Station, Old Masjid, Old Garrison Hospital. The Breach and Monument ... ..	5
Delhi Gate and Bridge, Dungeons, Jibi Gate ... ..	7
Raṅganātha Temple ... ..	8
Rāja's Palace, Swinging Arch ... ..	10
Coronation Building. Narasimha Temple ... ..	11
Memorial Hall, Tipu's Palace ... ..	12
Bathing Ghat, Gaṅgādhareśvara Temple ... ..	13
Water Gate, Place of Tipu's Death ... ..	14
Inman's Dungeon. Wellesley Bridge, Jumma Masjid ... ..	15
Bangalore Gates, South-East Fort Wall ... ..	16
Flagstaff Cavalier, Tipu's Racket Court, Elephant Gate, Sēmaliṅga Gate, Travellers' Bungalow, Darya-Daulat ... ..	17
Kaul Bazaar, Obelisk ... ..	19
Catholic Cemetery, Col. Grimstone's Tomb, Abbe Du Bois Church. The Eastern Ferry. Bailey Memorial, The Gumbaz ... ..	20
Lal-bagh, Montague's Tomb, Kavēri Confluence. Old Southern Ford, Gosai Ghat. Vazir Darga ... ..	21
Scott's Bungalow, Pūrniah's Bungalow, Mysore Gate, Garrison Cemetery, Periapatṇa Bridge ... ..	22
Rāji's Tomb Paśchimavāhini Railway Station ... ..	23

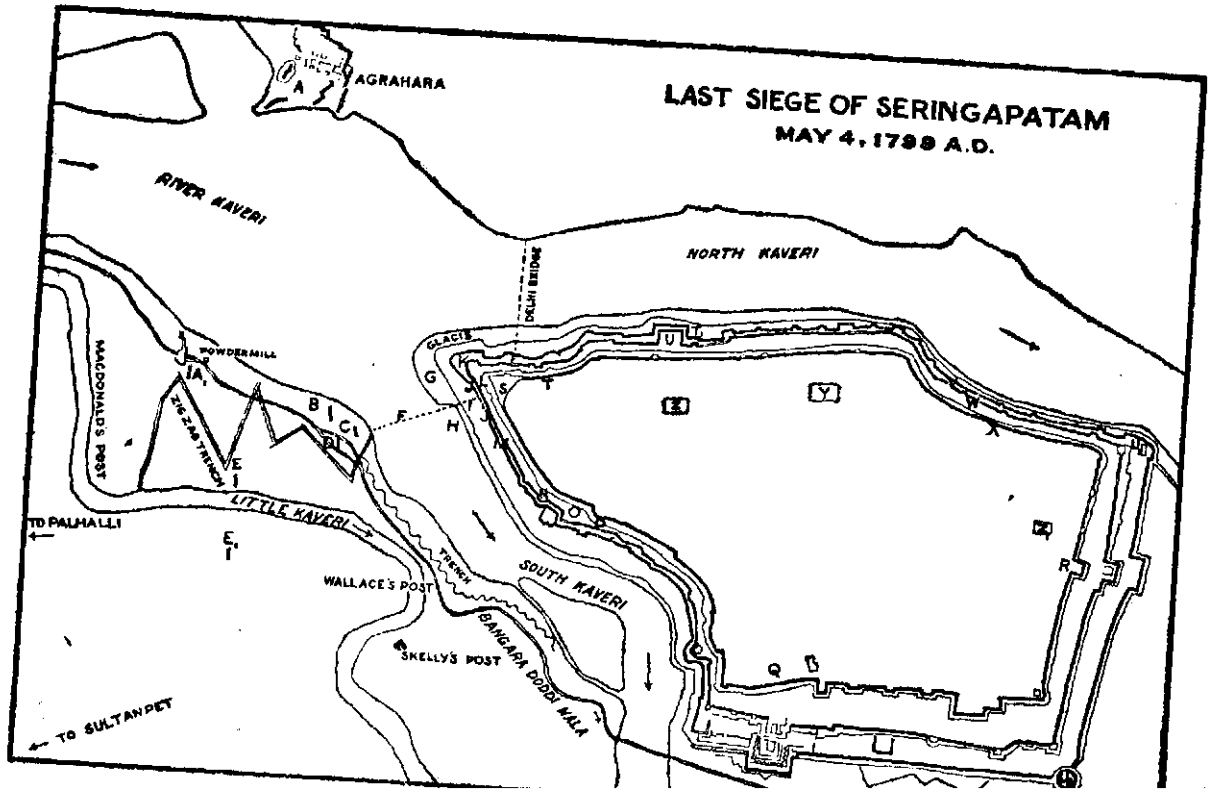
## ILLUSTRATIONS

## PLATE

- I. Sketch Map of Seringapatam
  - II. Sketch Map of The Siege of Seringapatam
  - III. The Breach and Monument
  - IV. Dungeon
  - V. Rāṅganātha Temple
  - VI. Swinging Arch
  - VII. Bathing Ghat
  - VIII. Jumma Masjid
  - IX. The Outer Fort Walls and Moat with the Periyāpaṭṇa Bridge in the background
  - X. Darya Daulat
  - XI. Darya Daulat--Defeat of Col. Bailey
  - XII. Gumbaz
-



# LAST SIEGE OF SERINGAPATAM MAY 4, 1799 A.D.



AGRAHARA

RIVER KAVERI

NORTH KAVERI

MACDONALD'S POST

POWDERMILL

DELHI BRIDGE

GLACIE

TIGER TRINCH

LITTLE KAVERI

TO PALHALLI

WALLACE'S POST

SOUTH KAVERI

SKELLY'S POST

BANGARA DODDI NALA

TO SULTANPET

A

B

C

D

E

F

G

H

I

J

K

L

M

N

O

P

Q

R

S

T

U

V

W

X

Y

Z

a

b

c

d

e

f

g

h

i

j

k

l

m

n

o

p

q

r

s

t

u

v

w

x

y

z

aa

ab

ac

ad

ae

af

ag

ah

ai

aj

ak

al

am

an

ao

ap

aq

ar

as

at

au

av

aw

ax

ay

az

ba

bb

bc

bd

be

bf

bg

bh

bi

bj

bk

bl

bm

bn

bo

bp

bq

br

bs

bt

bu

bv

bw

bx

by

bz

ca

cb

cc

cd

ce

cf

cg

ch

ci

cj

ck

cl

cm

cn

co

cp

cq

cr

cs

ct

cu

cv

cw

cx

cy

cz

da

db

dc

dd

de

df

dg

dh

di

dj

dk

dl

dm

dn

do

dp

dq

dr

ds

dt

du

dv

dw

dx

dy

dz

ea

eb

ec

ed

ee

ef

eg

eh

ei

ej

ek

el

em

en

eo

ep

eq

er

es

et

eu

ev

ew

ex

ey

ez

fa

fb

fc

fd

fe

ff

fg

fh

fi

fj

fk

fl

fm

fn

fo

fp

fq

fr

fs

ft

fu

fv

fw

fx

fy

fz

ga

gb

gc

gd

ge

gf

gg

gh

gi

gj

gk

gl

gm

gn

go

gp

gq

gr

gs

gt

gu

gv

gw

gx

gy

gz

ha

hb

hc

hd

he

hf

hg

hh

hi

hj

hk

hl

hm

hn

ho

hp

hq

hr

hs

ht

hu

hv

hw

hx

hy

hz

ia

ib

ic

id

ie

if

ig

ih

ii

ij

ik

il

im

in

io

ip

iq

ir

is

it

iu

iv

iw

ix

iy

iz

ja

jb

jc

jd

je

jf

jj

jk

jl

jm

jn

jo

jp

jq

jr

js

jt

ju

jv

jw

jx

ky

kz

la

lb

lc

ld

le

lf

lg

lh

li

lj

lk

ll

lm

ln

lo

lp

lq

lr

ls

lt

lu

lv

lw

lx

ly

lz

ma

mb

mc

md

# A GUIDE TO SERINGAPATAM

---

## Introduction.

Seringapatam or more correctly Śrīraṅapattana, the city of God Raṅga, is a wayside railway station on the Mysore State Railway line between Bangalore and Mysore. It is only nine miles from the Mysore city and is easily accessible by rail and by road. A number of buses give almost a half-hourly service between Mysore and the place, while the roads are so good that by car it is possible to drive to within a few yards of nearly all the places of interest.

Most of the bigger hotels in Mysore could make such arrangements as are necessary for visits to Seringapatam. For the convenience of visitors who would stop in the place, there are three buildings :—

- (1) The Travellers' Bungalow (also called Pūrṇiah's Bungalow and Lord Harris' Bungalow) is a neat small building situated to the south of the Mysore Gate and having accommodation for Indian and European travellers.
- (2) Inside the town, close to the road leading from the railway station to the bazaar, is the Coronation Hall with a number of rooms suitable for Indian visitors.
- (3) A larger and finer building for the Indian style of living is the Chāmarājendra Memorial Hall, which is situated close to the site of Tipu's old palace. Nearby are the shops of fruit vendors and Brahmin caterers.

Seringapatam is situated at the western extremity of an oval-shaped island formed by two branches of the Kāvēri river. It is about three miles long and a mile broad and has an angular western end. To the west of the latter, the river flows on a broad and shallow rocky bed, passing by a large rock on which the sage Gautama is said to have stood and performed *tapas* in the bygone golden ages. Here the river divides itself into two branches, the northern one being the larger. On this side of the island to the length of about a mile from the west end extends the fortified town of Seringapatam, while about a mile from the east end is situated the decaying village of Gañjām which was formerly a flourishing city. At the east end the two branches meet again and the great river flows forward. Each branch of the Kāvēri has a railway bridge and a road bridge and over these pass the main high ways between Bangalore and Mysore. Around Seringapatam, on both the banks of the river, stretch canals irrigating large expanses of rice fields and blessing the country with a plentiful supply of food and water.

## History

Situated as the island is in the midst of a fertile and prosperous valley and protected by the two arms of the Kāvēri, the island appears to have been marked out by nature for a well-protected capital.

Local mythology states that in response to the prayers of the Rishi Gautama, Lord Vishṇu appeared to him in the form of Raṅganātha and established himself on the island in the enjoyable company of the river goddess Kāvēri.

The island has inscriptions and monuments taking us back to the days of the great Hoysala Emperor, Viraballāla II, who ruled the Mysore area in 1200 A.D. An inscription of his, on a basement cornice of the inner wall of the Raṅganātha shrine, states that he made endowments for the worship of Raṅganātha, who appears to have been installed a little previously.





PLATE IV



DUNGEON.

Early in the 15th century, a neighbouring chief named **Vijayanagar.** Tirumaladēva appears to have occupied the place and built a fort with the permission of Emperor Dēvarāya of Vijayanagar. Some time later, it became the seat of the local viceroy of the Vijayanagar Empire.

Early in the 17th century differences arose between **Mysore Rājas.** Tirumalarāya, the viceroy, and Venkātapatirāya, his emperor and cousin. On behalf of the Emperor, Rāja Vodeyar, the enterprising ruler of the neighbouring town of Mysore, laid siege to the fort and took it in 1610 A.D. From that day for nearly half a century, the Mysore Rājas acted as viceroys of the empire and greatly increased their prestige and authority. It was during this period that the valorous king Kaṅṭhīrāi built a temple near his palace and installed in it a Hoysaḷa image of Narasimha. When Emperor Raṅga Rāya III moved the imperial capital to Bēlūr, he came into conflict with the viceroy and Doḍḍa Dēvarāja inflicted a defeat on the imperial forces at the battle of Hāssan and gained independence. It was about this time that the famous Śivāji attacked the Mysore kingdom and was driven back. Under Chikka Dēvarāja, Mysore formed an alliance with the Moghul emperor Aurangzeb.

In the 18th century, the Mahratas often approached **Hyder.** Seringapatam and forced heavy payments. Perhaps the worst of these Mahrata crises occurred in 1760-61 A.D. when the Rāja invited the clever and intrepid general Hyder Ali to become Sarvādhikāri and save the kingdom. Hyder drove back the Mahratas, saved the kingdom and stayed to rule it in the name of the Mahārāja, Kriṣṇarāja II. Gradually Hyder expanded the kingdom so far that the latter extended from Dīṇḍigal in the south to Belgaum and the river Kriṣṇā in the north. The Hindu Rāja was nominally the king, while Hyder was the all powerful military dictator, supported by the patriotic elements in the State, both Hindu and Muslim.

When Hyder died in 1782 A.D. his son Tipu, who was only in his early thirties, succeeded to his position. He was an active and ambitious **Tipu Sultan.**

ruler, who declared that Mysore was an independent empire with himself as its Emperor. His orthodox religious policy alienated the Hindus, his uneven temper and sternness drove some of his officers to disloyalty, while his pro-French foreign policy and open dislike for the British, determined the latter to put down his power. His disregard for the old Hindu dynasty led to plots and secret negotiations. He was a cultured man and a brave soldier, but a poor general and a bad diplomat. The combined armies of the British, the Nizam and the Mahratas overran his territories in 1791 and Lord Cornwallis crossed over by the Gañjām fort to the island and bombarded the eastern walls of the fort. Tipu was forced to sign the Treaty of Seringapatam and surrender his two sons as hostages for the payment of a heavy indemnity. This humiliation provoked him to further rashness in diplomacy, so that Lord Wellesley sent him an ultimatum to accept a subsidiary treaty. Since Tipu did not comply, the British and the allied armies marched upon Seringapatam from Bombay and Madras and ultimately took up their positions opposite to the western angle of the island.

General Baird, who had been for some years a prisoner in the fort, led the British attack on this corner

#### Fall of Seringapatam, 1799.

since the upper part of the fort wall here was of brick and not of stone. The British batteries bombarded the walls, breached the outer defence and so seriously damaged the brick part of the second wall that it was easy to climb it. Tipu was yet arranging for a protracted defence of the fort and had just commenced his mid-day meal on 4th May 1799, when the British surprised him by delivering the attack at 1 P.M. The details of the battle are given under the various places of interest. (See pages 5 and 6.)

Tipu offered a determined resistance and fell bravely defending his capital. The British and their

#### A Decaying Taluk Town.

allies under the leadership of General Harris decided to restore a part of the dominions forming the present Mysore State to Kṛishnarāja III, a young prince of the old Hindu dynasty, with Pūrniah, Tipu's able revenue minister, as the regent and Dewan. A British garrison was stationed at Seringapatam under the command of General Wellesley

(afterwards Duke of Wellington) and the Mahārāja's capital was transferred to Mysore, the place of his early ancestors. Later on, the British cantonment was removed from Seringapatam and the place has since then gradually declined and become a small and unimportant taluk town noted only for its past glory.

### Places of Interest.

The numbers given below refer to those noted on the sketch map (Pl. I):—

#### 1. Seringapatam Railway Station.

Just to the west of the railway station is a small mosque with a walled courtyard and a gateway.

2. **Old Masjid.** Its hall has tapering wooden pillars. This mosque is said to have been the old Jumma Masjid of Seringapatam used by the Muslims before Tipu built the new Jumma Masjid. It is also called Mir Sādak's Masjid.

A short distance to the south-west of the Breach is a high and ruined compound wall, inside which there is the basement of a now disappeared building which had an inner quadrangle.

3. **Old Garrison Hospital.** Immediately after the siege of Seringapatam, Col. Wellesley (afterwards Duke of Wellington) was stationed here in charge of the British garrison. The hospital of the old garrison was housed in this building from 1799 for several years.

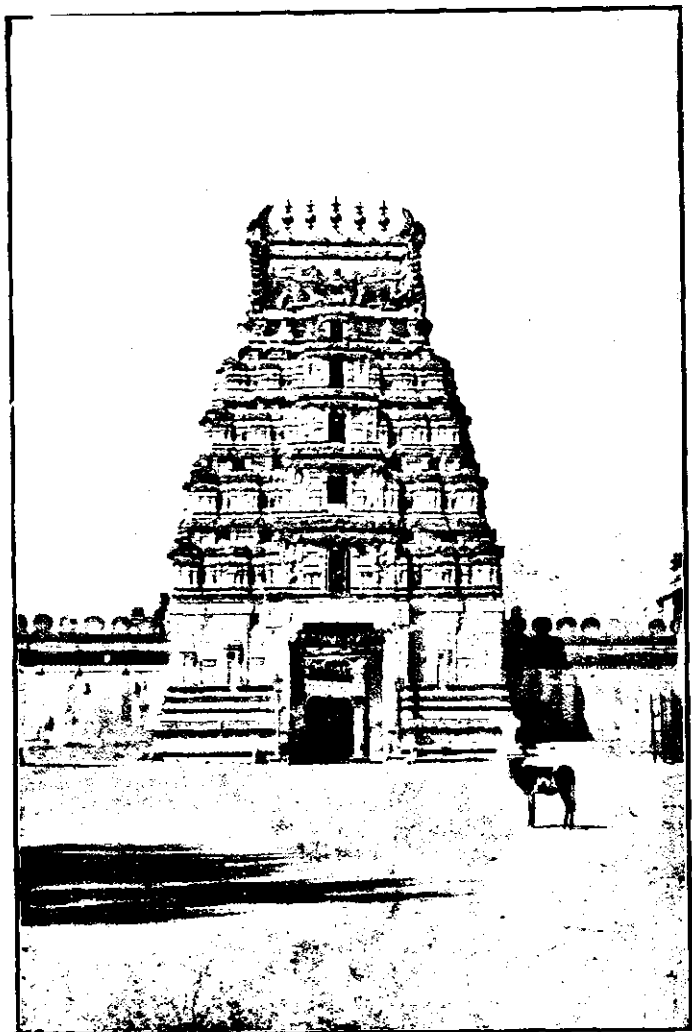
To the north-west of the island, the broad river Kāvēri divides itself into the northern and southern branches. The old defence here

4. **The Breach and Monument.** consisted of a stone wall of about 8' high with a brick wall above it more than 10' high. It was poorly supplied with bastions and was mainly in the shape of two rather straight lines meeting at a corner (Pl. III). At this corner, a large bastion had been erected and provided with a heavy battery facing north and west. Outside this wall were a wide moat and another lower Hindu wall which protected it from the enemies' cannon. To these Hyder added outer defence works close to the river and Tipu put up a third and innermost wall with an

earthen top and a high cavalier overlooking and protecting the north-west battery. Between the second and third walls was a rock-out<sup>f</sup> moat.

The defenders never expected an attack from this corner, but General Baird had noted, as a prisoner, the weakness of the brick wall and he directed the British attack on it. The Madras Army occupying the high banks of the little Kāvēri (called Macdonald's Post) got position of the Bangāradoddi Nāla, cut a zig-zag trench right up to the river bank, erected a number of batteries and made a feint attack at the south-west corner of the fort so successfully that it became dangerous for Tipu's soldiers to make use of the north-west battery or even stay near it. The Bombay army took possession of Agrahāra, a village on the left bank to the north-west of the island and commanded the enfilade of the western fort wall. Firing from a shorter range it levelled down the outer defences, seriously damaged the outer wall and so battered<sup>f</sup> the brick structure of the second wall that they could easily climb it. Urged on by General Baird and led by Sergeant Graham, the British clambered up the battered wall and were surprised to find that the few sepoy's intended for its defence had moved away some distance. Sergeant Graham, who was the first to climb up, got the flag handed on to him, planted it on the wall and cried out 'Cheers for Lieutenant Graham.' The next second he was shot and fell down. The British troops were surprised to find the inner moat and the earthen inner wall and taking a mere chance of finding a way to cross over, divided themselves into two parties one of which went along the south wall until it found a narrow causeway meant for the use of the coolies repairing the walls. There they crossed over and ran along the inner wall until they found a gateway near which firing was going on. The other party advanced slowly along the north wall and found itself opposed by Tipu and a few of his men. Tipu shot and retreated slowly until he came to the Water Gate.

From 1799 till 1905 the walls and the breach were left in their original battered condition. At the suggestion of Lord Curzon, the Government of Mysore put up a parapet across the breach and set up an obelisk in memory of the British assault and of the British officers who died at the siege of Seringapatam



RANGANATHA TEMPLE.

PLATE VI.



SWINGING ARCH.

on 4th May 1799. The structure is one of polished stone and is in the form of a square-planned pier surmounted by a tapering obelisk. On the top and around are cannon balls and the design is dignified. On the slabs of the faces of the pier are named the officers who fell and the units which fought at the siege of Seringapatam in 1799.

About a hundred yards to the east of the breach is a small gateway protected by two round bastions which led pedestrians out of the fort by another small gate in the outer defences to a bridge across the river known as the Delhi Bridge. This bridge was pulled down by Tipu Sultan just before the fall of Seringapatam. On a bastion near the south end of the bridge are engraved the images of Hanumān and Gaṇēśa showing that the structure was originally a Hindu wall. The absence of cement and the use of dressed stone blocks support this view.

About a hundred and fifty yards to the east of the Delhi Gate, there is a large oblong bastion in the fort wall, on the top of which was formerly placed a heavy battery called Sultan Batēri. Under it is a dungeon hidden from the view of the passers-by (Pl. IV). It is about 100' × 40' and has a low-vaulted brick roof. Around the walls are stone slabs, the holes of which were meant to receive the chains of prisoners. It is said that many English prisoners were confined here under the ever-watchful guard of the sepoy of the battery. It has been stated, perhaps wrongly, that Col. Bailey was kept here for some time. During the siege of Seringapatam one of the cannons rolled back, pierced the ceiling and fell into the vault. It is lying there still. It is more than 10' long and its mouth is 6' wide.

Just to the west of the dungeon between the battery and the outer wall has now been constructed the new pump house called 'Jaya Chāmarāja Water Works' for supplying water to Seringapatam.

The Jibi Gate or Kṛishṇa Gate is a small passage in the fort wall leading from the temple area to the river. Just outside it is a small shrine of Hanumān, which perhaps stands there from the pre-Hyder times.



The Raṅganātha temple is one of the largest temples in the State and is of great local importance (Pl. V). Its god has given the town his name. The temple is approached by a large gateway with a huge brick tower. It appears to have been constructed in three or four different stages.

### 8. Ranganatha Temple.

The inscription on the south basement cornice of the sanctum states that the Hoysaḷa king Ballāla II (c 1200 A.D.), gave certain grants to the priests and Brahmins of Tiruvaranga-Nārāyaṇa-Chaturvēdi-Maṅgaḷam. This establishes the fact that the innermost part of the temple was a Hoysaḷa construction of which the large garbhagrīha, the śukanāsi and more than a score of large granite pillars bearing the round and star-shaped Hoysaḷa forms remain. The garbhagrīha wall has a basement of five cornices which are comparatively plain. The upper portions of the walls which are now hidden in the darkness of the *kattale pradakṣhiṇā* are adorned with pilasters and fine towered canopies under some of which are sculptures. In one place, a *kalaśa*, *chakra*, *śankha* and *padma* are depicted in a band.

Inside the garbhagrīha is a colossal image of Vishṇu reclining on the huge coils of the great snake Ananta who lifts up his seven-headed hood to shade his master's head. The snake is shown with scales, etc., and is very realistic. The reclining image shows the god supporting his head on his right hand, while his left hand is stretched over the body. The figure wears a tall *kiriṭa* and all manner of ornaments down to the toe-ring; but it has no lotus creeper rising from the navel. Near his legs is the image of the goddess Kāvēri made of a different stone and at his feet stands the sage Gautama. The image is so large that a full view of it cannot be obtained from the śukanāsi or the navaraṅga beyond which visitors are not allowed to enter. The ceilings of the śukanāsi and the garbhagrīha are well-designed shallow domes with *padmas* in the centre.

The present navaraṅga is a structure mostly made up of round, bell-shaped pillars and two pillars of the eight-pointed star shape with vertical scroll bands. From this navaraṅga proceeds the *kattale pradakṣhiṇā* or dark circumambulatory passage. The ceilings are almost plain.

Guarding the navaraṅga doorway are two colossal dvārapālas and in front of them is a large pillared courtyard with an opening around the dhvaja-stambha and a pradakṣhiṇa on the west side. Most of the pillars in this yard are of unmistakable Hoysala shapes, some of them being round, cross-shaped, star-shaped, flower-shaped, cylinder-shaped, etc., and all of them having parts corresponding to the bell, pot, wheel and umbrella mouldings characteristic of Hoysala work. The rather plain ceilings and beams and the inscriptions in the north part of the pradakṣhiṇa show that this portion has been a later construction for which the old Hoysala materials have been freely used. It may be inferred from a study of the inscriptions that the navaraṅga was constructed after the time of Dēvarāya of Vijayanagar and before that of Kṛishnarāya. A Daṇṇāyaka by name Timmaṇṇa Hebbār is said to have collected the materials of a large number of Jain Bastis from Kaḷastavāḍi on the Mysore road and enlarged the Raṅganātha temple. Either this has happened or the materials of an old Hoysala maṇṭapa have been utilised in the construction of the pillared court. At the four corners of this court there are shrines. On the south-east are Maṇavālamahāmuni and the Śrī-vaishṇava Ālvārs. On the south are Rājamannār Kṛishṇa—a beautiful group—and Rāma. On the south-west are Narasimha and Sudarśana. On the west is Gōpālakṛishṇa, a beautiful Hoysala image, resembling that at Sōmanāthapur. On the north-west is a shrine of Lakshmi as Raṅganāyaki. The image is a fine one, though of Vijayanagar workmanship. On the north-east are shrines housing another Rāma group, Rāmānuja, Dēśika, etc. Inside the gateway of the open yard stand shrines for large images of Hanumān and Garuḍa against the east wall. Near this are four pillars of the Vijayanagar type bearing the 24 forms of Viṣṇu with labels.

To the east of the pillared court is a large mukhamaṇṭapa of the late Vijayanagar period. Here and there Hoysala pillars have been used. In the centre of this maṇṭapa and piercing through its roof stands a large monolithic Garuḍa pillar. Some of the pillars to its west are of fine design. The eaves on either side of the Garuḍa pillar show that the former mukhamaṇṭapa ended here. The tall pillared part of the pātālāṅkana to its east is said to have been constructed by

Hyder Ali. The outer yard of the temple is protected by a high prakāra wall made of granite blocks. There appears to have been a pillared verandah on its inside but it has now disappeared. The *Hydernāma* mentions that in 1774 A. D. the temple caught fire<sup>1</sup>; but it is not known which part was destroyed. Outside the north wall of the mukhamanṭapa is a brīndāvana, whose top is finely designed and decorated with sculptures of dancing Kṛishṇa, Raṅganātha, Vēnugōpāla and Janārdana. Inside the mahādvāra are four stone elephants of good workmanship. The large mahādvāra and gōpura are in the Vijayanagar style, the stone part of the mahādvāra having numerous pilasters and turreted niches. The gōpura is large and is a landmark for many miles around. It is said that here Kṛishṇarāja Wadiyar III was hidden and protected during the days of the battle of Seringapatam. The garbhagṛīha tower is also of Vijayanagar workmanship, but is finely designed.

To the north-east of the temple there is a pond (now filled up) and near it is an inscription of 1800 A. D.

About fifty yards to the south-east of the Raṅganātha temple is pointed out the place where the palace of the old Hindu rulers of Seringapatam is said to have stood. It appears to have faced north and in it was born the young prince who was installed as the Rāja of Mysore in 1799. In recent years the Government of Mysore got a small pavilion erected here to commemorate this event.

About a hundred yards to the south of the Raṅganātha temple and on the other side of the station road, stood until recently a masonry arch, (Pl. VI) about 112 feet in span and 3 feet in width. It had been standing for close upon five generations.<sup>2</sup> When visitors stood on its keystone and jerked, the arch swung to the extent of about 2 or 3 inches. It was a great attraction to the juvenile visitors. Tradition wrongly stated that it was designed and constructed for Tipu Sultan by a French engineer by name De Haviland as a sample of what the latter proposed to do by way of a single arch bridge for the Kāvēri river. But

<sup>1</sup> See M. A. R. 1930, page 93.

<sup>2</sup> This arch collapsed suddenly on 2nd July 1936.

in reality, this engineer was in British service and designed the new Government House at Mysore about the year 1807-08. It must have been during this period that the arch was constructed.

The coronation building was opened to commemorate the Coronation of King George V.

### 11. Coronation Building.

The Narasimha temple is a very large and partly ruined structure which has recently been repaired

### 12. Narasimha Temple.

and put out of danger. It consists of a large original garbhagriha in the middle of which is a platform with four pillars. On it is installed a handsome image of Lakshminarasimha whose beauty of figure, exquisite ornamentation and workmanship and fine jewelled and serpentine tōraṇas bearing the ten avatāras declare it to be definitely a Hoysala image. Wherefrom this image was obtained and whether it was originally in the neighbourhood, it is not possible to state. But when Kaṇṭhīrava-Narasarāja, the valiant Mysore ruler, found it, he appears to have got a temple constructed with the garbhagriha, an oblong broadish sukanāsi and many-pillared navaraṅga hall. The latter has an extension on the north in which the image of this king is installed. This image which is 3½' high is a portrait statue of fine workmanship and great sculptural value. It shows the prince wearing a long coat, kammaband, etc., like a Moghul with long hair dressed in the old Hindu fashion. He wears moustaches with side-whiskers and stands with hands joined reverentially. The straight nose, the largish eyes and the prognathic face are no doubt due to the conventions of the sculptor. But the figure is a good example of South Indian portrait work of the 17th century.

The original temple appears to have had an open pradakshīṇa, the basement having four cornices with a frieze of retrospectant lions. In later times, this appears to have been converted into a dark or *kattale* pradakshīṇa and a pātālāṅkaṇa with a covered prākāra, was added to the temple. At the four corners of this prākāra, cells and shrines were erected for the Alvārs, Anḍal, Lakshmi (a fine image, of the late Vijayanagar

type), Bālakṛishṇa on fours, Rāmānuja and Dēśika. This might have all been done in the days of Doḍḍadēvarāja or Chikka-dēvarāja. At a still later date, a large outer mukhamanṭapa was added to the mahādvara and an outer prākāra with inside verandahs and a gōpura were constructed, making the temple a huge one. This outer prākāra is now mostly ruined. The rest of the temple is intact.

The Memorial Hall was built in memory of Śrī Chāmarājendra Waḍiyar Bahadur along with the

13. **Memorial Hall.** bathing ghat of the north branch of the Kāvēri.

About a hundred and fifty yards east of the Raṅganātha temple are now to be seen a mound and

14. **Tipu's Palace.** the ruined walls of the Lal Mahal which was once a magnificent palace inhabited by

Tipu. It was dismantled at the orders of the British officers and very probably its wooden pillars were utilised for some building in Mysore. Originally this palace faced west and appears to have had an open pillared court in front like Tipu's Bangalore palace and the Darya-Daulat.

Buchanan who saw the palace in May 1800 speaks of it in the following terms. (A journey from Madras through Mysore, Canara and Malabar Vol. I, pp- 47 ff.).—

“The Palace of the Sultan at Seringapatam is a very large building surrounded by a massive and lofty wall of stone and mud, and outwardly is of a very mean appearance. There were in it, however, some handsome apartments which (suffered) from want of ventilation. . . . The private apartment of Tippoo formed a square, in one side of which was the room that he himself used. The other three sides of the square were occupied by warehouses . . . .

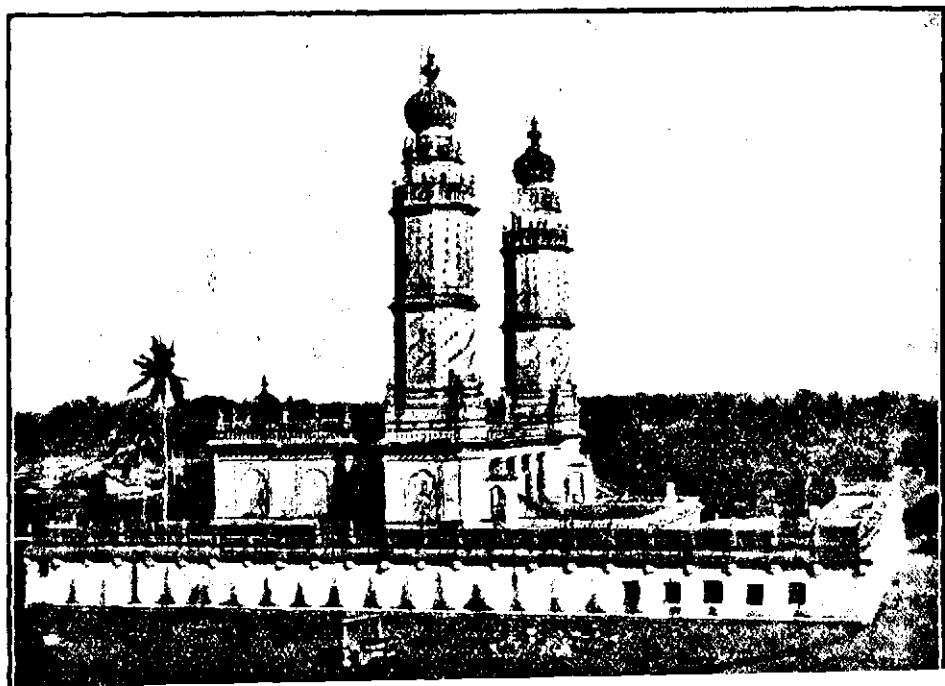
“The apartment most commonly used by Tippoo was a large lofty hall, open in front after the Mussalman fashion and on the other three sides entirely shut up from ventilation. . . .

“From the principal front of the palace which served as a revenue office and as a place from whence the Sultan occasionally showed himself to the populace, the chief entry into the private square was through a strong narrow passage, wherein



BATHING GHAT.

PLATE, VIII.



were chained four tigers; . . . . Within these was the hall in which Tipu wrote. . . . . Immediately behind this was the bed-chamber which communicated with a hall by a door and two windows, and was shut up on every other side. The door was strongly secured on the inside and a close iron grating defended the windows.

"The only other passage from the private square was into the Zenana or women's apartments."

About a hundred yards to the north of Tipu's palace through a breach in the wall where origi-

#### 15. Bathing Ghat.

nally appears to have stood a small gateway, we pass the moat by a modern bridge

and come to the Bathing ghat constructed by the Mysore Government about a generation ago for the convenience of the public. (Pl. VII.). On either side of the steps leading to the river there are several small maṅṭapas under the spreading trees. Some distance to the west are seen the arches of the railway bridge.

To the north-east of the palace zenana enclosure, stands an old temple of Gaṅgādharaśvara. The

#### 16. Gaṅgadharaśvara Temple.

main shrine which faces east and the chief mahādvara which faces south are both

finely ornamented granite structures of about the days of Kṛishṇarāya of Vijayanagar. The walls are ornamented with cornices, turreted pilasters and niches, and the eaves have pendant drops. A number of stone images are kept in the temple most of which belong to the middle or late Vijayanagar period. The temple has a large prākāra with a verandah and to its south-west is a maṅṭapa with a number of niches containing a large number of liṅgas and images of the Śaiva saints. Most of these appear to date from the days of the Dalvoys of Mysore. In one of the cells is now kept a copper image of Dakṣiṇāmūrti (chinmudrā, rudrākshamālā, vīṇa and pustaka), which is said to be of solid copper and bears an inscription stating that it was a gift of Dalvoy Nañjarāj. The mahādvara has tall doorways with finely carved scroll friezes rising above river goddesses standing on makaras. The pillars of the mahādvara have their massiveness relieved by indentations of the corners and well-designed series of turrets rising in several tiers. The design of the pillars is different from that seen elsewhere,



though it somewhat reminds us of that met with in the Sömēśvara temple at Kōlār.

To the north-east of the Gaṅgādhara temple, the fort wall is pierced by a low arched gateway known as the Water Gate since the palace people and the inhabitants of the northern part of the town used it as the best approach to the river. It was formerly thought that Tipu was caught inside this gateway between two sections of the British and was killed. He really died about a hundred yards further east.

About fifty yards to the east of the Water Gate, inside the second fort line, is said to have stood another gateway which led through the inner earthen wall which Tipu had got constructed. On the 4th May 1799, pushed back by the storming troops, Tipu moved along the second wall and descending from it near the Water Gate tried to enter the town through this second gate. It is said that he found the latter closed and the Killedār unwilling to open it. Meanwhile, the British troops who had crossed over to the third wall came along, descended into the town and entered this gate from the inside. Tipu was thus caught in the gateway between the two advancing sections of the British forces and fell down wounded. The storming troops not knowing that Tipu was here entered the gate and rushed towards the palace. An English soldier later on narrated that he found near the gateway an unconscious Mysorean Sardar wearing a golden belt and that he shot him in the temple when that person tried to defend it with his sword. It has been thought that Tipu met with his death thus.

When the British Officers tried to find the body of Tipu, his dying private secretary pointed to the place where his master lay under a heap of the dead. Tipu's body was easily identified since his face had not been disfigured and he had worn a well-known talisman. The body was yet warm and was removed to the palace for the night. It is learnt that the inner fortification was razed to the ground by the British officers some years later and a row of tamarind trees planted.

At the north-east corner of the fort there is a large structure with a battery on its top and in its hollow is a low vaulted cellar about 45' x 32' which resembles Bailey's dungeon, but is smaller. It is said to have been discovered in 1895 by Mr. Thos. Inman, an engineer. It is said that prisoners used to be confined here also and that among them was a notorious Mahrata free-booter, Dhōndia Vāgh, who escaped on the day of the siege and gave considerable trouble in the north of the Mysore State in the days of Pūrñiah and Wellesley until at last he was killed. Dhondia is said to have been converted by force to Islam and to have returned to his old faith. His son was taken into service by Wellesley.

**19. Inman's Dungeon.** From the battlements above the dungeon, a direct view is obtained of the Wellesley Bridge, constructed by Pūrñiah in honour of Col. Wellesley, the Commander-in-Chief of Mysore. It is built of rough stone pillars and beams and is slightly arched to the west. Though rude in construction, it has proved its strength against the floods of the Kāvēri river. It was completely submerged in the flood of 1924. It was on this bridge that the plague rebels of Gañjām and elsewhere were stopped in 1899, when the reserve police force of Mysore opened fire upon them. At the north end of this bridge is a pier-like monument bearing a Persian inscription mentioning that it was constructed in 1804.

**20. Wellesley Bridge.** Close to the eastern or Bangalore Gate, stood formerly a Hindu temple with a prākāra wall and a verandah running around. It was very probably a structure of the early eighteenth century and was not of great architectural importance. It is said to have been dedicated to Hanumān or Añjanēya. Near it, in the field, Tipu is said to have played in his younger days when his father was yet a rising young officer in the Mysore army. One day, a fakir told the boy that he would some day become very prosperous and directed him to construct, when the Fakir's words came true, a mosque on the site when he became a greatman. Tipu induced the Hindus to remove the image from the temple, and got erected the Jumma Masjid, the hall of which

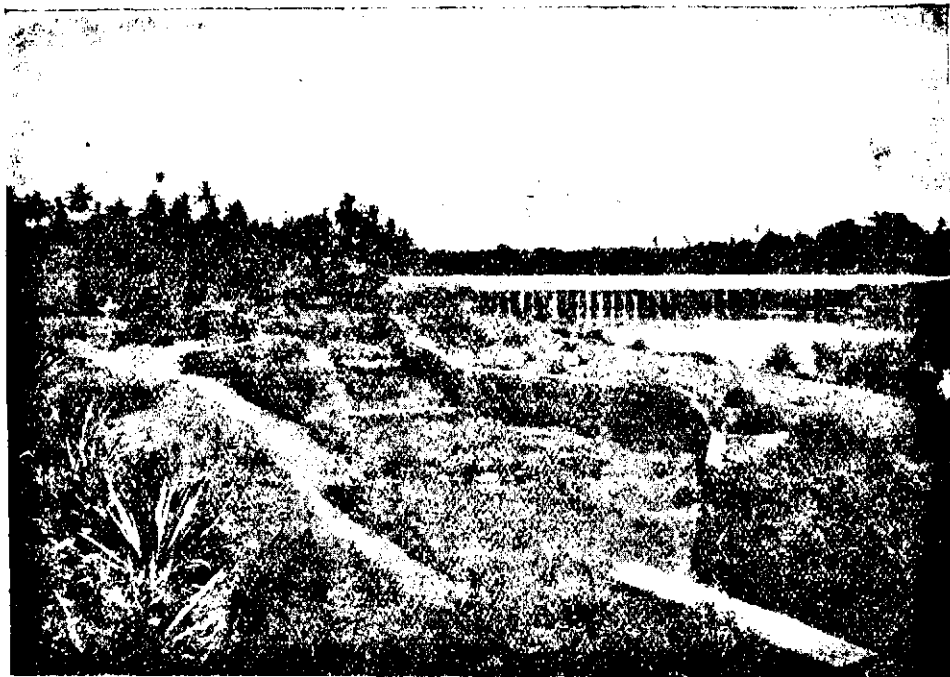
has numerous foil arches and a *mihrab* on the west in the form of a small room. On the walls of the hall are found stone inscriptions with quotations from the Quran, etc. One of them gives the date of its construction as corresponding to 1787 A. D. The main points of interest in the mosque are its two great and beautiful minars which combine majesty with grace (Pl. VIII). Their shafts are ornamented with cornices and floral bands while near the top are two narrow terraces with ornamental parapets. A winding flight of more than 200 steps leads to the top of each minar. From there, the visitor gets a panoramic view of the neighbourhood. At the crown of the minars are large masonry *kalaśas* placed upon flowers and fully ornamented. Above, are smaller metallic *kalaśas* of the Hindu type. These minars are among the beauties of Seringapatam.

In the middle of the east walls are now to be seen three gates leading towards Bangalore, formerly known as the Gañjām Gates. They are high arched structures with their upper portions mostly of brick. On either side of each gateway are guard rooms. The easternmost of these is provided with a drawbridge the mechanism for manipulating which is still to be seen in a small room on the south. It consists of a large wooden wheel, about 8 feet in diameter, with handles. When this was turned, a beam connected with its axle wound up a chain which passed through a ventilator and was attached to the outer end of the bridge.

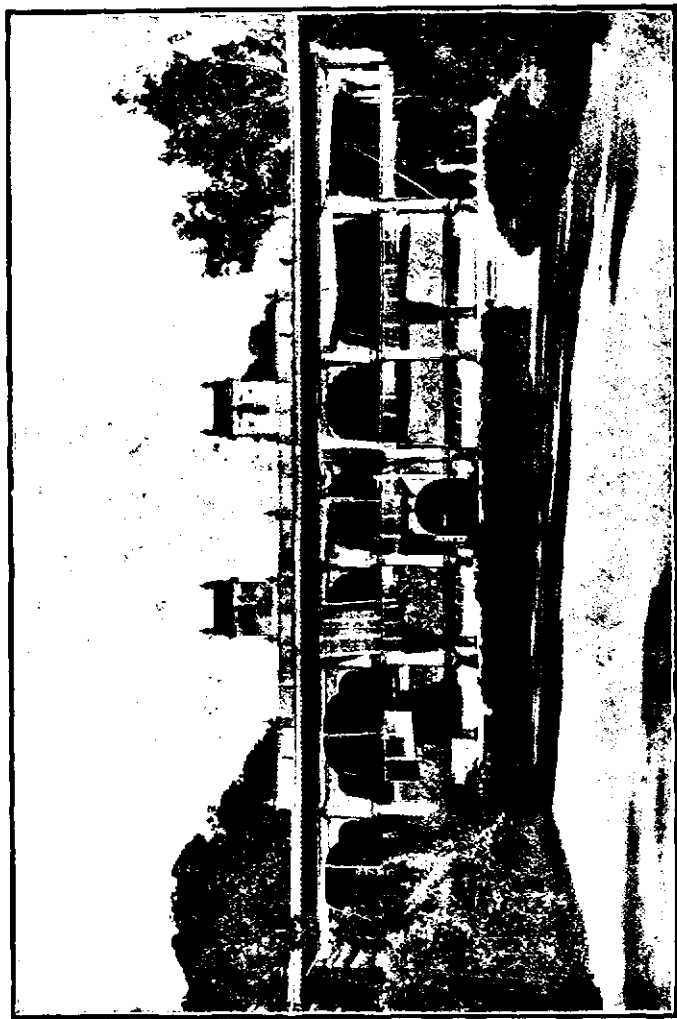
Opposite to the outer gate, are the ruins of a large vaulted cellar around which formerly stood a fort wall with a battery. Just inside the outer gate on the north, an insignificant little mound indicates the place where Mir Sadak, Tipu's Dewan, fell. Muslim passers by spit at his tomb and believe that Mir-Sadak betrayed the fort on the day of its siege and was killed by a guardsman and thrown into the ditch when he was trying to escape.

In 1791, Lord Cornwallis attacked Seringapatam from the south-east. After the war, Tipu thought it better to strengthen the fortifications on this side by deepening the moats, putting up an outer defensive wall and adding a

### 23. South-East Fort Wall.



THE OUTER FORT-WALLS AND MOAT WITH THE PERIYAPATNA BRIDGE  
IN THE BACKGROUND.



number of cavaliers. Thus the fortifications here are very formidable. In the south-east corner of the outer wall was placed a battery, known as Kālegauḍana Batēri.

The Flagstaff cavalier is a square structure rising in the shape of a huge pyramid on which the flag of Tipu

**24. Flagstaff Cavalier.** was hoisted and seen from a great distance all round.

On the left, is another cavalier recently converted into a fresh water reservoir. To its north and

**25. Tipu's Racket Court.** adjoining it, is Tipu's old Racket Court converted by the British garrison into a Ball-alley. The court is about 80' long and 40' broad and its south wall is about 35' high. The structure is open at the top.

Since the old south gates were too low to allow any elephant with a howdah to pass, Tipu, got two

**26. Elephant Gate.** more gates constructed of brick work about fifty yards to the west. These are about 15' high, vaulted, and adorned with arches on the sides. On a wall adjoining the inner one, Tipu got a stone tablet put up giving the date of its construction and hoping that the fort would ever remain free from all misfortunes.

The inner Mysore Gate also was raised in height to allow the passage of an elephant. The outer one which was in a dangerous condition was repaired in recent years by the Mysore Government and provided with keystone arches.

Proceeding directly south from the arch, we pass through a small fort gate to the river side where

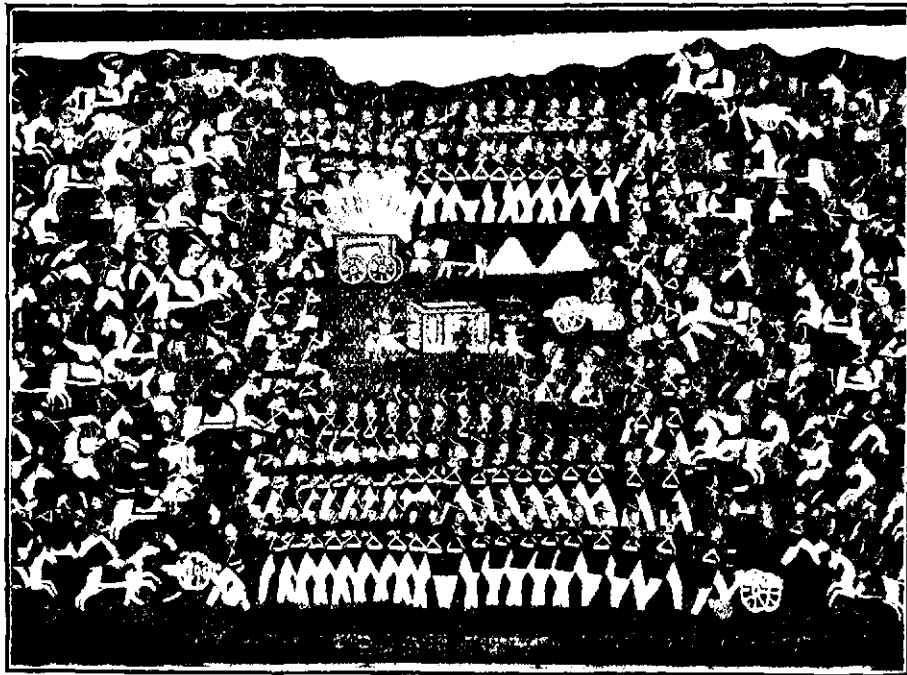
**27. Somalinga Gate.** stands a small ruined shrine of Śiva known as the Sōmaliṅga or Sōmēśvara temple. In the neighbourhood appears to have been the old cremation ground of Seringapatam. From the river bank a good view is obtained of the cart bridge over the south branch of the Kāvēri known as the Periapāṭṇa Bridge. (Pl. IX).

**28. Travellers' Bungalow.** (Please see Page 1.)

About 2 furlongs directly to the east of the fort, the river flows over a sandy bed in a south-easterly

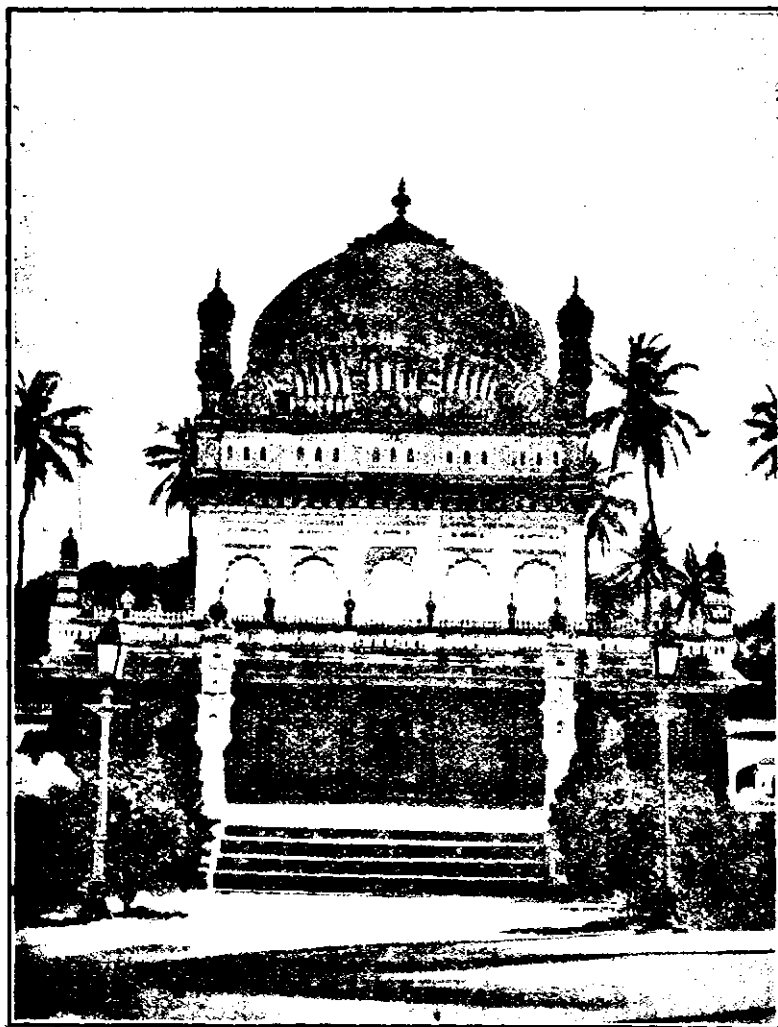
**29. Darye-Daulat.** ly direction. Here, on its south bank, Tipu planted a large and well-designed

garden full of trees known for their fruits, flowers and shade. In the centre of the garden, he erected, in 1784, his summer palace known as the Darya-Daulat, probably in commemoration of his victory extending to the seas (Pl. IX). The word means 'the wealth of the sea.' The structure is raised on a square platform, about 5' high. Around it, runs a wide verandah borne on tapering lotus-form wooden pillars with trefoil arches. The inner building which is also square, faces the Nagārkhāna on the south and the river on the north, both the faces being exactly similar. The staircases are hidden in the dark rooms concealed in the walls and on the first floor there is a small hall with projecting balconies in the centre. In this hall, it is said that Tippu used to receive his ambassadors and guests. On the east and west sides there are three rooms, each used perhaps for living purposes. An interesting feature of this buildings is that its walls, pillars and arches are profusely painted with varied colours including a free use of gold. The designs are highly interesting and the balconies are good works of art. On the west wall are painted four large battle scenes. The first shows Hyder Ali riding an elephant in the midst of his troops marching forth for the first battle of Pōlilūr. His army is composed of swordsmen on horseback and footmen with spears. The former wear cloth helmets, long coats, breeches and slippers, while the latter wear jackets, breeches, sandals and turbans, held in position with handkerchiefs. In the second panel, Tipu is riding on horseback and similarly proceeding to the battle. His favourite tiger stripes are conspicuous on his banners and elsewhere. His Secretary who is reporting to him has his face disfigured by modern Muslims, since they think he is Mir Sadak, the traitor. Among the cavalry can be seen a company of French swordsmen led by an officer who is pointed out generally as Mons. Lally. The third panel shows the victory of Mysore at the battle of Pōlilūr. Hyder and Tipu guide their troops from their elephants and the Mysore cavalry charges the British, both in front and from behind. The French gunners and the commander of the Mysore forces play their part in the battle. The red-coated English soldiers have formed a phalanx to protect their ammunition and their leader Col. Bailey. The latter who is carried in a



DARYA-DAULAT—BATTLE OF POLILUR—COL. BAILEY IS SURROUNDED.





GUMBAZ.

palanquin sits with his finger on his lips in dismay. A ball from the French gunners explodes the ammunition. The defeat of the British is certain. Tipu appears to have loved to contemplate this brilliant victory which resulted in the capture of Col. Bailey and the flight of Sir Hector Munro to Madras (Pl. XI).

The fourth panel shows the Nizam's army with his horsemen and elephants arriving near the battle field, too late to be of any help to their allies, the British. Below the picture of the Nizam's general, riding on horseback are painted the figures of a cow and a boar. It is explained that, in Tipu's opinion, the leader of the Deccan forces came like a cow and fled like a boar.

The east walls of the building are covered with a large number of panels, most of which contain the scenes of the durbars of various rulers, contemporary with Tipu and otherwise. About a hundred of these personages are painted among whom may be identified the Hindu Rāṇi of Chittōr, Mohamed Ali Walajah and his queen, the Rāja of Tanjore, the Rāja of Benares, Bālāji Rao II Peshva, Kṛishṇarāja Waḍiyar III (said to have been painted at a later date), Māgaḍi Kempegauḍa (?) and Madikere Nāyak of Chitaldrug.

This building was used as a residence by Col. Wellesley during his command of the Mysore Forces. It is being very well looked after by the Estates and Gardens Department of the Mysore Government and in the durbar hall is a framed order of Lord Dalhousie for its preservation, containing extracts from a letter of Lord Wellesley, who later on became the Duke of Wellington.

A little further on, the road crosses a drain-like channel. Here was formerly situated the big bazaar of Gañjām. In 1791, Tipu met Lord Cornwallis here in a specially erected pavilion, signed the Treaty of Seringapatam and surrendered his sons as hostages. Since a *kaul* or treaty was signed here, the bazaar became known as the Kaul Bazaar.

About three furlongs directly to the south of the Darya-Daulat, on the high ground, stands a memorial obelisk bearing a tablet to the memory of the British officers and men who fell in 1799. This high ground is popularly called 'Sabbalrāṇi Tiṭṭu'.

since Tipu impaled alive here one of his women, who was suspected of unfaithfulness.

This cemetery which lies at a little distance to the east of the Kaul Bazaar was meant for the use of the Roman Catholics in the garrison.

**32. Catholic Cemetery**

'In memory of Lieut-Col. Grimstone, a monument was erected as a tribute of their affection and esteem by his brother officers of the fourth regiment of foot. He departed this life the 10th September 1801.' This monument is on

**33. Col. Grimstone's Tomb.**

a small hillock near the western entrance of the Gañjām village.

In an old church, at the south-east of Gañjām, lived Abbe Du Bois, a Catholic missionary who wrote a highly interesting account of *Hindu Manners, Customs and Ceremonies*.

**34. Abbe Du Bois Church.**

The eastern ferry led from the north-east of Gañjām to the foot of the Karighaṭṭa hill and was the chief route for all traffic before the Wellesley Bridge was built.

**35. The Eastern Ferry.**

The Bailey Memorial was built by a nephew of Col. Bailey

**36. Bailey Memorial.** after the fall of Seringapatam.

Hyder loved the eastern end of the island, so that after his death, Tipu got a beautiful tomb erected here for the family. It is known as 'the Gumbaz' (Pl. XII). It is an imposing

**37. The Gumbaz.**

structure in the midst of the lovely Lal-bagh garden, with a high and wide platform and having a verandah of polished black basalt pillars all around. The square tomb chamber is surmounted by a well-shaped, large, brick-built dome. The basalt doorways and their ivory inlaid doors, the carved stone windows and Persian inscription stones are of fine workmanship. Tipu's mother and Tipu himself were subsequently buried in the hall on either side of Hyder. In the verandahs and on the platform are other tombs of Hyder's family. The Government of Mysore have been looking after the monument with great care providing for all the prescribed religious ministrations for the souls of Hyder and Tipu. The place is one of pathetic interest, particularly for those who have studied the tragedy of Tipu Sultan's life

About two hundred yards to the east of the Gumbaz, stand the ruined walls of the Lal-bagh Palace, an elaborately painted mansion of exquisite beauty which Hyder built for his own use. It was dismantled by the British Officers.

**38. Lal-bagh.**

Palace, an elaborately painted mansion of exquisite beauty which Hyder built for his own use. It was dismantled by the British Officers.

Near the confluence of the two branches of the Kāvēri at the eastern end of the island a small plot of ground is enclosed by a low brick compound wall and contains three tombs of which the central one has a tablet reading "Col. Edward Montague commanding the Bengal Artillery died on the 8th May 1799 aged 47 years."

**39. Montague's Tomb.**

Near the confluence of the two branches of the Kāvēri at the eastern end of the island a small plot of ground is enclosed by a low brick compound wall and contains three tombs of which the central one has a tablet reading "Col. Edward Montague commanding the Bengal Artillery died on the 8th May 1799 aged 47 years."

The confluence of the northern and southern branches of the Kāvēri at the eastern end of the island is one of the most beautiful spots in the neighbourhood, especially during the flood season—July to September.

**40. Kaveri Confluence.**

The confluence of the northern and southern branches of the Kāvēri at the eastern end of the island is one of the most beautiful spots in the neighbourhood, especially during the flood season—July to September.

A little distance to the south of No. 39, is found the old Southern Ford across the river in the vicinity of the Gōsai Ghāt mentioned below.

**41. Old Southern Ford.**

A little distance to the south of No. 39, is found the old Southern Ford across the river in the vicinity of the Gōsai Ghāt mentioned below.

The Gōsai Ghāt is situated in a beautiful spot which is rich in pleasing scenery and contains some modern shrines.

**42. Gosai Ghat**

The Gōsai Ghāt is situated in a beautiful spot which is rich in pleasing scenery and contains some modern shrines.

In a beautiful garden belonging at present to Mr. Mohammed Sait of Mysore and lying at a distance of about half a mile to the south of the Obelisk monument mentioned under No. 31 above, there is situated by the side of the river a Darga of brick and mortar which is said to be of the Vazir of Hyder called Langada Gulam Ali Khan. Though built on a low platform, the structure is sufficiently imposing and has a massive dome above resembling the dome of Mallick Rihan Darga at Sirā. The central hall of the Darga contains two tombs probably of the minister and his wife. The low minarets of the platform, the arched openings of the verandah, the floriated battlements of the parapet and the massive dome surmounting the tomb present a dignified view to the visitor.

**43. Vazir Darga.**

In a beautiful garden belonging at present to Mr. Mohammed Sait of Mysore and lying at a distance of about half a mile to the south of the Obelisk monument mentioned under No. 31 above, there is situated by the side of the river a Darga of brick and mortar which is said to be of the Vazir of Hyder called Langada Gulam Ali Khan. Though built on a low platform, the structure is sufficiently imposing and has a massive dome above resembling the dome of Mallick Rihan Darga at Sirā. The central hall of the Darga contains two tombs probably of the minister and his wife. The low minarets of the platform, the arched openings of the verandah, the floriated battlements of the parapet and the massive dome surmounting the tomb present a dignified view to the visitor.

Directly to the south of the fort, on the left bank of the southern branch of the Kāvēri, in the midst of a lovely garden, stands a bungalow where lived Col. Scott, the officer commanding the Seringapatam garrison. A popular story is current that Scott's family was suddenly decimated by an attack of cholera. The Colonel appears to have retired and returned to England.

**44. Scott's Bungalow.**

The Bungalow is now used as a Museum for the display of important historical portraits and paintings which are classified according to periods and exhibited in separate rooms. A printed Guide to the Pictures is available at the Bungalow.

This building is one of historical importance. After the fall of Seringapatam, it became the residence of Lt.-Gen. George Harris and subsequently of Purniah, Dewan of Mysore, till 1811 A. D. The building is included in the list of Ancient Monuments. It is taken care of by the Public Works Department and used as the Travellers' Bungalow.

**45. Purniah's Bungalow.**

The garden in front of the Bungalow is called the Doctor's Garden and belongs to the Palace Department.

The middle of the south fort wall is pierced by a number of gates, through which the road from Mysore passes. These had protective wall and draw-bridges.

**46. Mysore Gate.**

In the cemetery further south were buried the European dead belonging to the Seringapatam garrison. The tombs are being looked after by the Mysore Government.

**47. Garrison Cemetery.**

A bridge connects Seringapatam with the districts of Mysore, Coorg and South Kanara. It is a viaduct built over an aqueduct carrying a branch of the Bangāra Dodḍi channel into the island. The channel was the main source of the supply of drinking water to the island in Tipu's days

**48. Periapatna Bridge.**

This tomb is situated at a little distance to the south-east of the Paschimavāhini railway station. It was constructed in 1794 A.D. in memory of Mahārāpi Kempanañjammañṇi, mother of Kṛishnarāja Wadiyar III of Mysore. The structure is in the form of an open pillared maṇṭapa enclosed by a compound wall. In the centre of the maṇṭapa there is a stone Brīndāvan, with the figures of Vēṅu-gōpāla, Hanumān, and Kāḷinga-mardana on its parapet.

50. Paschimavahini Railway Station.