

UNIVERSITY OF FLORIDA  
AGRICULTURAL EXPERIMENT STATION  
Wilmon Newell, Director

---

# SWINE PRODUCTION IN FLORIDA

By A. L. SHEALY AND W. J. SHEELY

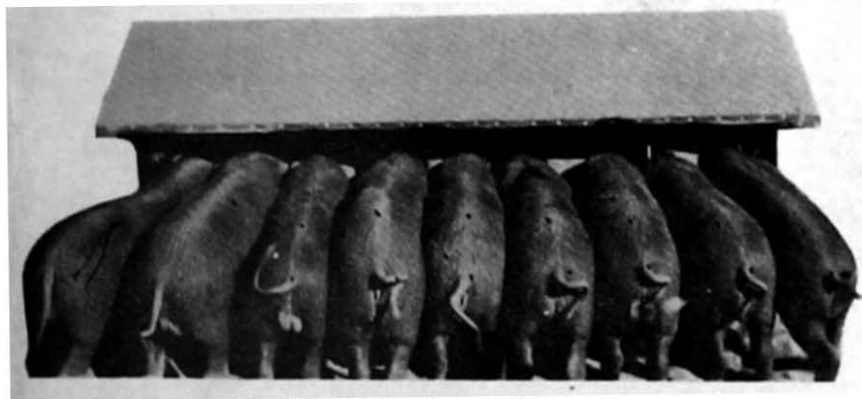


Fig. 1.—Making hogs of themselves.

Bulletins will be sent free upon application to  
the Agricultural Experiment Station,  
GAINESVILLE, FLORIDA

## BOARD OF CONTROL

P. K. YONGE, Chairman, Pensacola  
A. H. BLANDING, Bartow  
W. B. DAVIS, Perry

RAYMER F. MAGUIRE, Orlando  
FRANK J. WIDEMAN, West Palm Beach  
J. T. DIAMOND, Secretary, Tallahassee

## STATION EXECUTIVE STAFF

JOHN J. TIGERT, M.A., LL.D., President  
WILMON NEWELL, D.Sc., Director  
H. HAROLD HUME, M.S., Asst. Dir., Research  
S. T. FLEMING, A.B., Asst. Dir., Admin.  
J. FRANCIS COOPER, M.S.A., Editor

R. M. FULGHUM, B.S.A., Asst. Editor  
IDA KEELING CRESAP, Librarian  
RUBY NEWHALL, Secretary  
K. H. GRAHAM, Business Manager  
RACHEL McQUARRIE, Accountant

## MAIN STATION—DEPARTMENTS AND INVESTIGATORS

### AGRONOMY

W. E. STOKES, M.S., Agronomist  
W. A. LEUKEL, Ph.D., Associate  
G. E. RITCHEY, M.S.A., Assistant\*  
FRED H. HULL, M.S., Assistant  
J. D. WARNER, M.S., Assistant  
JOHN P. CAMP, M.S.A., Assistant

### ANIMAL HUSBANDRY

A. L. SHEALY, D.V.M., Veterinarian in Charge  
E. F. THOMAS, D.V.M., Asst. Veterinarian  
R. B. BECKER, Ph.D., Associate in Dairy Husbandry  
W. M. NEAL, Ph.D., Assistant in Animal Nutrition  
C. R. DAWSON, B.S.A., Assistant Dairy Investigations

### CHEMISTRY

R. W. RUPRECHT, Ph.D., Chemist  
R. M. BARNETTE, Ph.D., Associate  
C. E. BELL, M.S., Assistant  
J. M. COLEMAN, B.S., Assistant  
H. W. WINSOR, B.S.A., Assistant  
H. W. JONES, B.S., Assistant

### COTTON INVESTIGATIONS

E. F. GROSSMAN, M.A., Assistant  
P. W. CALHOUN, B.S., Assistant

### ECONOMICS, AGRICULTURAL

C. V. NOBLE, Ph.D., Agricultural Economist  
BRUCE MCKINLEY, A.B., B.S.A., Associate  
M. A. BROOKER, Ph.D., Assistant

### ECONOMICS, HOME

QUIDA DAVIS ABBOTT, Ph.D., Head  
L. W. GADDUM, Ph.D., Biochemist  
C. F. AEMANN, Ph.D., Physiologist

### ENTOMOLOGY

J. R. WATSON, A.M., Entomologist  
A. N. TISSOT, M.S., Assistant  
E. E. BRATLEY, M.S.A., Assistant  
L. W. ZIEGLER, B.S., Assistant

### HORTICULTURE

A. F. CAMP, Ph.D., Horticulturist  
HAROLD MOWRY, B.S.A., Associate  
M. R. ENSIGN, M.S., Assistant  
A. L. STAHL, Ph.D., Assistant  
G. H. BLACKMON, M.S.A., Pecan Culturist  
C. B. VAN CLEEF, M.S.A., Greenhouse Foreman

### PLANT PATHOLOGY

W. B. TISDALE, Ph.D., Plant Pathologist  
G. F. WEBER, Ph.D., Associate  
A. H. EDDINS, Ph.D., Assistant  
K. W. LOUCKS, M.S., Assistant  
ERDMAN WEST, M.S., Mycologist

## BRANCH STATIONS AND FIELD WORKERS

L. O. GRATZ, Ph.D., Asso. Plant Pathologist in charge, Tobacco Exp. Sta. (Quincy)  
E. R. KINCAID, M.S., Assistant Plant Pathologist (Quincy)  
W. A. CARVER, Ph.D., Assistant Cotton Investigations (Quincy)  
RAYMOND M. CROWN, B.S.A., Field Asst., Cotton Investigations (Quincy)  
JESSE REEVES, Farm Superintendent, Tobacco Experiment Station (Quincy)  
J. H. JEFFERIES, Superintendent, Citrus Experiment Station (Lake Alfred)  
GEO. D. RUEHLE, Ph.D., Assistant Plant Pathologist (Lake Alfred)  
W. A. KUNTZ, A.M., Assistant Plant Pathologist (Lake Alfred)  
B. E. FUDGE, Ph.D., Assistant Chemist (Lake Alfred)  
W. L. THOMPSON, B.S., Assistant Entomologist (Lake Alfred)  
R. V. ALLISON, Ph.D., Soils Specialist in charge Everglades Experiment Sta. (Belle Glade)  
R. W. KIDDER, B.S., Foreman, Everglades Experiment Station (Belle Glade)  
R. N. LOBDELL, M.S., Assistant Entomologist (Belle Glade)  
F. D. STEVENS, B.S., Sugarcane Agronomist (Belle Glade)  
H. H. WEDGEWORTH, M.S., Associate Plant Pathologist (Belle Glade)  
B. A. BOURNE, M.S., Associate Plant Physiologist (Belle Glade)  
J. R. NELLER, Ph.D., Associate Biochemist (Belle Glade)  
A. DAANE, Ph.D., Associate Agronomist (Belle Glade)  
FRED YOUNT, Office Assistant (Belle Glade)  
M. R. BEDSOLE, M.S.A., Assistant Chemist (Belle Glade)  
A. N. BROOKS, Ph.D., Associate Plant Pathologist (Plant City)  
R. E. NOLEN, M.S.A., Field Assistant in Plant Pathology (Plant City)  
A. S. RHOADS, Ph.D., Associate Plant Pathologist (Cocoa)  
C. M. TUCKER, Ph.D., Associate Plant Pathologist (Hastings)  
H. S. WOLFE, Ph.D., Asso. Horticulturist in charge, Sub-Trop. Exp. Sta. (Homestead)  
L. R. TOY, B.S.A., Assistant Horticulturist (Homestead)  
STACY O. HAWKINS, M.A., Field Assistant in Plant Pathology (Homestead)  
D. G. A. KELBERT, Field Assistant in Plant Pathology (Bradenton)  
FRED W. WALKER, Assistant Entomologist (Monticello)  
D. A. SANDERS, D.V.M., Associate Veterinarian (West Palm Beach)  
M. N. WALKER, Ph.D., Associate Plant Pathologist (Leesburg)  
W. B. SHIPPY, Ph.D., Assistant Plant Pathologist (Leesburg)  
C. C. GOFF, M.S., Assistant Entomologist (Leesburg)  
J. W. WILSON, Ph.D., Assistant Entomologist (Pierson)

\*In cooperation with U. S. Department of Agriculture.

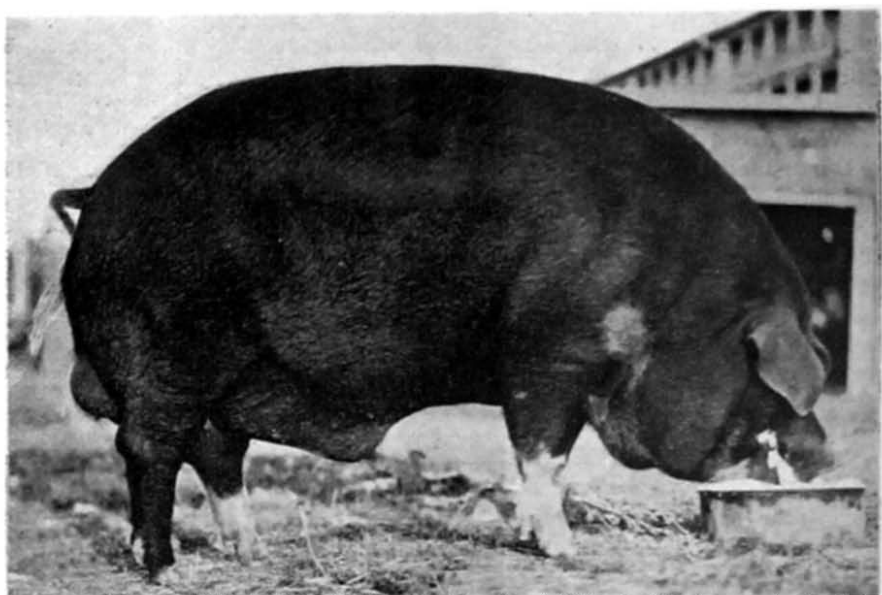
## CONTENTS

	Page
INTRODUCTION .....	5
THE HERD .....	5
MARKET TYPE .....	12
BREEDS .....	16
What Breed to Choose .....	16
Duroc-Jersey .....	17
Poland China .....	17
Hampshire .....	18
EQUIPMENT .....	18
Portable Hog House .....	18
Sanitary Hog Waterers .....	19
Shelter of Tin Roofing .....	21
Brush Shades .....	21
Water Supply .....	22
Pig Troughs .....	22
Self-Feeder .....	23
Box for Mineral Mixture .....	24
FEEDS FOR SWINE .....	24
Grazing Crops .....	27
Concentrates .....	31
FEEDING SWINE .....	32
Feeding the Breeding Herd .....	32
Feeding Pigs Before and After Weaning .....	33
Feeds for Fattening Shoters .....	33
The Use of Mineral Mixtures .....	33
MARKETING .....	34
HOG LOSSES IN TRANSIT .....	37
Loading .....	38
CURING PORK ON THE FARM .....	41
Slaughtering .....	42
Scalding .....	43
Removing the Internal Organs .....	43
Cutting the Carcass .....	44
Methods of Curing .....	44
COMMON DISEASES OF SWINE .....	46
Hog Cholera .....	46
Swine Plague .....	49
Necrotic Enteritis .....	49
Necrotic Rhinitis or Bull-Nose .....	50
EXTERNAL PARASITES .....	51
Lice .....	51
Mange .....	52
INTERNAL PARASITES .....	53
Large Roundworm .....	53
The Kidney Worm .....	57

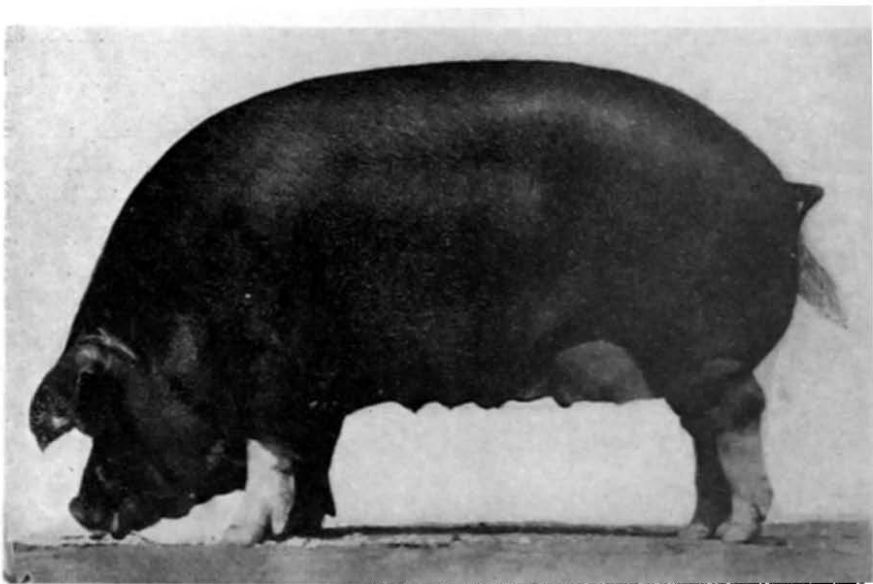
Shanajayarao Gadgil Library



GIPE-PUNE 047685



**Fig. 2.—A boar of good type. (Courtesy Am. Poland China Record Assn.)**



**Fig. 3.—A sow of good type. (Courtesy Am. Poland China Record Assn.)**