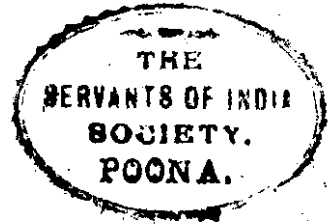


SELECTIONS FROM THE RECORDS OF THE BOMBAY GOVERNMENT.

No. DXXXI—NEW SERIES.

R6
B.P.
181

PAPERS



RELATING TO THE

SECOND REVISION SETTLEMENT

OF THE

IGATPURI, DINDORI, NASIK, NIPHAD, SINNAR, CHANDOR, YEOLA
AND NANDGAON TALUKAS

OF THE

NASIK DISTRICT

VOLUME III

INDEX OF SUBJECTS DEALT WITH IN THE EIGHT SETTLEMENT
REPORTS OF THE NASIK DISTRICT IN VOLUME I AND EIGHT
SETTLEMENT MAPS.

INDEX OF SUBJECTS DEALT WITH IN THE EIGHT SETTLEMENT REPORTS OF THE NASIK DISTRICT.

Subjects.	Settlement Officer's Report.	Collector's remarks.	Commissioner's remarks.
	Pages.	Pages.	Pages.
Agriculturists and non-agriculturists, areas held by — in—			
Igatpuri	12
Dindori	37
Násik	74
Niphád	118
Sinnar	156
Chándor	157-158
Yeola	214-215
Nándgaon	244
Agricultural Stock (see Stock)			
Area under Settlement	265-266
Assessment, proposed increases in—	266-267
Do. general reasons for increase in—	267
Do. pressure of present—	267-268
Do. methods of — (see under bagayat, jirayat, rice)	
Bagayat, method of assessment of — lands in—			
Igatpuri	12
Dindori	39
Násik	76-77
Niphád	121
Sinnar	158-159
Chándor	189-190
Yeola	217
Carts, increase in the number of—	267
Classification, — of Mal and Kali lands in—			
Igatpuri	269, 274
Násik	269-274
Nándgaon	229-231
Classification, — of Rice lands in—			
Igatpuri	268
Dindori	269
Násik	272-273
Classification, — of Jirayat lands (see reclassification)			
Do. — of Khandesh compared with Násik	275
Climate, — of—			
Igatpuri	2
Dindori	24
Násik	62	...	270
Niphád	275
Sinnar	144	...	276
Chándor	176	...	277
Yeola	205
Nándgaon	231
Communications, — in—			
Igatpuri	3	62	...
Dindori	26-27
Násik	64
Niphád	106-107
Sinnar	145-146
Chándor	178
Yeola	207	227	...
Nándgaon	233

Subjects.	Settlement Officer's Report.	Collector's remarks.	Commissioner's remarks.
	Pages.	Pages.	Pages.
Communications, Lake Beale as an obstacle to— ...	3, 146
Do. Darna River as an obstacle to— ...	79, 146
Do. Godavri River as an obstacle to— ...	120, 146
Constitution, — of—			
Igatpuri	1
Dindori	23
Násik	61
Niphád	105
Sinnar	143
Chándor	175
Yeola	205
Nándgaon	229
Crofton, Reports of Mr. —	265
Crops, Areas under — in—			
Igatpuri	2—3	21	...
Dindori	25-26
Násik	62-64
Niphád	108
Sinnar	144-145
Chándor	177
Yeola	206
Nándgaon	231-232
Crop experiments, — in—			
Igatpuri	10-11
Dindori	29-30
Násik	71
Niphád	117-118
Sinnar	149
Chándor	182
Yeola	212-213
Nándgaon	241-242
Cultivation (see Crops)—			
Do. Influence of Kolis and Mahars on methods of—	5
Education, — in—			
Igatpuri	5
Dindori	28
Násik	66-67
Niphád	110	141	...
Sinnar	148
Chándor	180-181
Yeola	209
Nándgaon	237
Exports and Imports of—			
Igatpuri	4
Dindori	27
Násik	65
Niphád	111-112
Chándor	178-179
Yeola	208-209
Nándgaon	235-236
Fallow, Lands left—in—			
Igatpuri	3
Dindori	24
Sinnar	145
Chándor	177

Subject.	Settlement Officer's Report.	Collector's remarks.	Commissioner's remarks.
	Pages.	Pages.	Pages.
Groups, General remarks about—	268
Do. Number of — proposed	266
Do. Present and proposed — in—			
Igatpuri	13—15	21	268-269
Dindori	40—43	59	269-271
Násik	79—83	103	273-275
Niphád	121—130	141	275
Sinnar	159—162	173	276
Chándor	191—193	203	277
Yeola	219—220	227	278
Nándgaon	245—250	259	280-281
Do. Modifications proposed by the Commissioner in the Settlement Officer's proposals about—	281
Guarantee, period proposed for the Settlement guarantee of—			
Igatpuri	18	21	268-269
Dindori	51
Násik	89
Niphád	133
Sinnar	168
Chándor	198
Yeola	222	227	...
Nándgaon	254
Industries (see Trade)			
Imports (see under Exports)			
Jantries, use of— in—			
Dindori	39	...	272
Násik	76
Niphád	121
Sinnar	158	...	276
Chándor	189	...	277
Yeola	216	...	278
Nándgaon	252	...	279
Jirayat lands, method of assessment of— in—			
Igatpuri	12
Dindori	39
Násik	76
Niphád	121
Sinnar	157-158
Chándor	189
Yeola	216-217
Nándgaon	250-252
Do. Scales used in classifying — in—			
Dindori	39-40
Násik	75-76
Niphád	120
Chándor	188
Yeola	217	...	278
Nándgaon	250-251	...	279
Leases,—of Jirayat, Rice and Garden lands in—			
Igatpuri	8
Dindori	33-34
Násik	69-70
Niphád	114-115

Subject.	Settlement Officer's Report.	Collector's remarks.	Commissioner's remarks.
	Pages.	Pages.	Pages.
Leases,—of Jirayat, Rice and Garden lands in— <i>continued.</i>			
Sinnar	151-152
Chándor	183-184
Yeola	211-212
Nándgaon	239-241
Do. Observations regarding —	267-268
Malaria, seriousness of — as a source of economic loss	2, 24, 62
Do. seriousness of — as a factor in grouping, etc.	176	...	275, 277
Manufactures (see Trade)			
Markets, Chief places of — in—			
Igatpuri	3
Dindori	24
Násik	64-65
Niphád	107
Sinnar	146
Chándor	178
Yeola	207
Nándgaon	233-234
Motasthal (see under Bagayat)			
Murphy, Reports of Mr. —	265
Patasthal, proposals for assessment of — lands in—			
Igatpuri	13
Dindori	47-51	59	271
Násik	85-89	103	275
Niphád	130-133	141	276
Sinnar	164-168	173-174	277
Chándor	195-198	203	278
Yeola	217-218	227	278
Nándgaon	254
Physical features of—			
Igatpuri	1
Dindori	23
Násik	61	103	...
Niphád	105
Sinnar	143
Chándor	175
Yeola	205
Nándgaon	229
Population in—			
Igatpuri	4-5
Dindori	27-28
Násik	65-66
Niphád	108-109
Sinnar	147
Chándor	179
Yeola	209
Nándgaon	236-237
Prices, prevalent in—			
Igatpuri	8-9
Dindori	30-31
Násik	71-72
Niphád	115-116
Sinnar	152-154
Chándor	184-185
Yeola	213-214
Nándgaon	242-243

Subject.	Settlement Officer's Report.	Collector's remarks.	Commissioner's remarks.
	Pages.	Pages.	Pages.
Prices, Rise in —, general remarks about —	267
Do. Variations in levels of Indian —	9, 10, 31, 72, 116, 153, 184, 213, 242
Railways (see Communications).			
Rainfall in—			
Igatpuri	2	21	...
Dindori	24-25
Násik	62
Niphád	105-106
Sinnar	144
Chándor	176
Yeola	205-206
Nándgaon	231
Rates, present and proposed — of jiráyat lands in—			
Igatpuri	15-17	...	268-269
Dindori	44-45	59-60	269-271
Násik	83-84	...	273-275
Niphád	130	141	275
Sinnar	162-163	...	276
Chándor	193-195	...	277
Yeola	221-222	...	278
Nándgaon	252-254	...	280-281
Do. present and proposed — for rice lands in—			
Igatpuri	17-18	...	268-269
Dindori	45-47	...	269-271
Násik	84-85	...	273-275
Sinnar	164	...	276
Do. present and proposed — for garden lands (see Patasthal).			
Reclassification, amount and nature of — at first Revision			
Settlement in—			
Igatpuri	268-269
Dindori	269-270
Násik	272
Niphád	275
Sinnar	276
Chándor	277
Yeola	278
Nándgaon	279
Rents, observations regarding — (see under leases).			
Revenue, history of collection of — in—			
Igatpuri	11-12
Dindori	35-37
Násik	73-74
Niphád	118-119
Sinnar	155-156
Chándor	186-187
Yeola	215-216
Nándgaon	243-244
Rice lands, method of assessment of—in—			
Igatpuri	12-13
Dindori	40
Násik	77-79
Sinnar	159

Subject.	Settlement Officer's Report.	Collector's remarks.	Commissioner's remarks.
	Pages.	Pages.	Pages.
Rice lands, scales of assessment of—in—			
Dindori	270
Násik	272-278
Do. comparison of—in—			
Igatpuri	270
Dindori	278
Násik	274
Roads, (see Communications).	
Sales,—of dry crop, rice and garden lands in—			
Igatpuri	6-8
Dindori	32-33
Násik	68-69
Niphád	112-114
Sinnar	149-151
Chándor	182-183
Yeola	210-211
Nándgaon	238-239
Do. authority for previous—in—			
Igatpuri	1
Dindori	28
Násik	61
Niphád	105
Sinnar	143
Chándor	175
Yeola	205
Nándgaon	229
Do. piecemeal character of—	266
Settlements, summary of past—in—			
Igatpuri	13
Dindori	38-39
Niphád	119-120
Sinnar	157
Chándor	190-191
Yeola	218
Nándgaon	244-245
Soils, description of different sorts of—in—			
Igatpuri	1
Dindori	23-24
Násik	62
Sinnar	143
Chándor	175-176
Nándgaon	229-231
Stock, agricultural—in—			
Igatpuri	5-6
Dindori	20
Násik	68
Niphád	117	141	...
Sinnar	148
Chándor	181
Yeola	209-210	227	...
Nándgaon	237
Do. General remarks about—	267
Suspensions and Remissions,—of Revenue in—			
Igatpuri	11
Násik	73

Subject.	Settlement Officer's Report.	Collector's Remarks.	Commissioner's Remarks.
	Pages.	Pages.	Pages.
Suspensions and Remissions—of Revenue in—(contd.)			
Niphád	119
Sinnar	156
Chándor	186—187
Nándgaon	244
Do. Effect of present Government Orders on—	267
Trade and Industries in—			
✓ Igatpuri	4
✓ Dindori	27
o Násik	65
o Niphád	110
o Sinnar	147
o Chándor	179
o Yeola	207—08
o Nándgaon	236
Value of land—(see under Sales and Leases).			
Wages—rates of, in—			
Igatpuri	10
Dindori	35
Násik	72
Niphád	116—17
Sinnar	154—55
Chándor	185—86
Yeola	214
Nándgaon	243
Waste lands in—			
Igatpuri	11
Násik	73
Niphád	119
Sinnar	156
Chándor	186
Yeola	216
Nándgaon	243—44
Water-supply in—			
Igatpuri	6
Dindori	28—29
Násik	67
Niphád	107—08
Sinnar	148
Chándor	181
Yeola	210
Nándgaon	237—38

REFERENCE

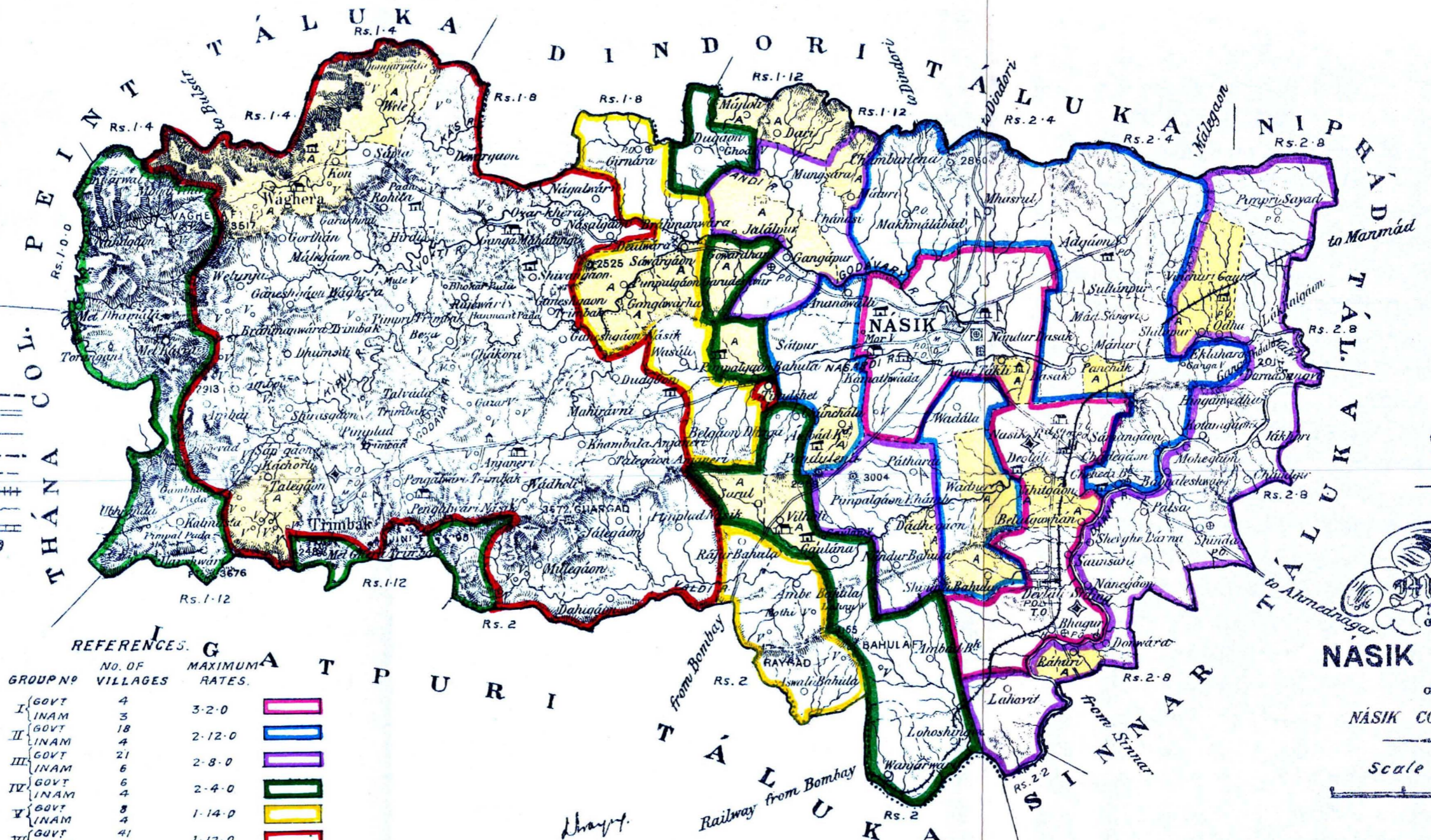
- District Head Quarter and Bazar Town
- Taluka ... do
- Petha ... do
- Kasba and Bazar Village.....
- Bazar Village.....
- Deserted Village.....
- Dist. Bungalow.....
- Traveller's Bungalow.....
- Forest Rest House.....
- P. W. D. Rest House.....
- P. W. D. Inspection Bungalow.....
- P. W. D. Irrigation Bungalow.....
- Dharmshala.....
- Post Office..... P.O.
- Telegraph Office..... T.O.
- Hospital..... H.
- Dispensary..... D.
- Municipality..... M.
- Places of Pilgrimage.....
- Petha Boundary.....
- Metalled Roads.....
- Unmetalled Roads.....
- Provincial Road under construction.....
- Other Roads and Cart Tracks.....
- Railway and Station.....
- Tanks.....
- Canals.....
- Salt Pan.....
- Inam Village..... I.
- Jaghir Village..... J.
- Esafat Village..... E.
- B.T.S. Station (Altitude..... 1538
- Lamanitanda..... LT.
- Sherkati Inam Village..... S.I.
- Taluka Local Board Rest House.....
- Mahal..... M
- Tarf..... T.
- Port.....
- Ferry.....
- Police Station.....

REFERENCES.

GROUP NO	NO. OF VILLAGES	MAXIMUM RATES.	
I GOVT	4	3-2-0	
II INAM	3	3-2-0	
III GOVT	18	2-12-0	
IV INAM	4	2-12-0	
V GOVT	21	2-8-0	
VI INAM	6	2-8-0	
VII GOVT	6	2-4-0	
VIII INAM	4	2-4-0	
IX GOVT	8	1-14-0	
X INAM	4	1-14-0	
XI GOVT	41	1-12-0	
XII INAM	4	1-12-0	
XIII GOVT	1	1-10-0	
XIV INAM	12	1-8-0	

ALIENATED VILLAGES YELLOW WASH

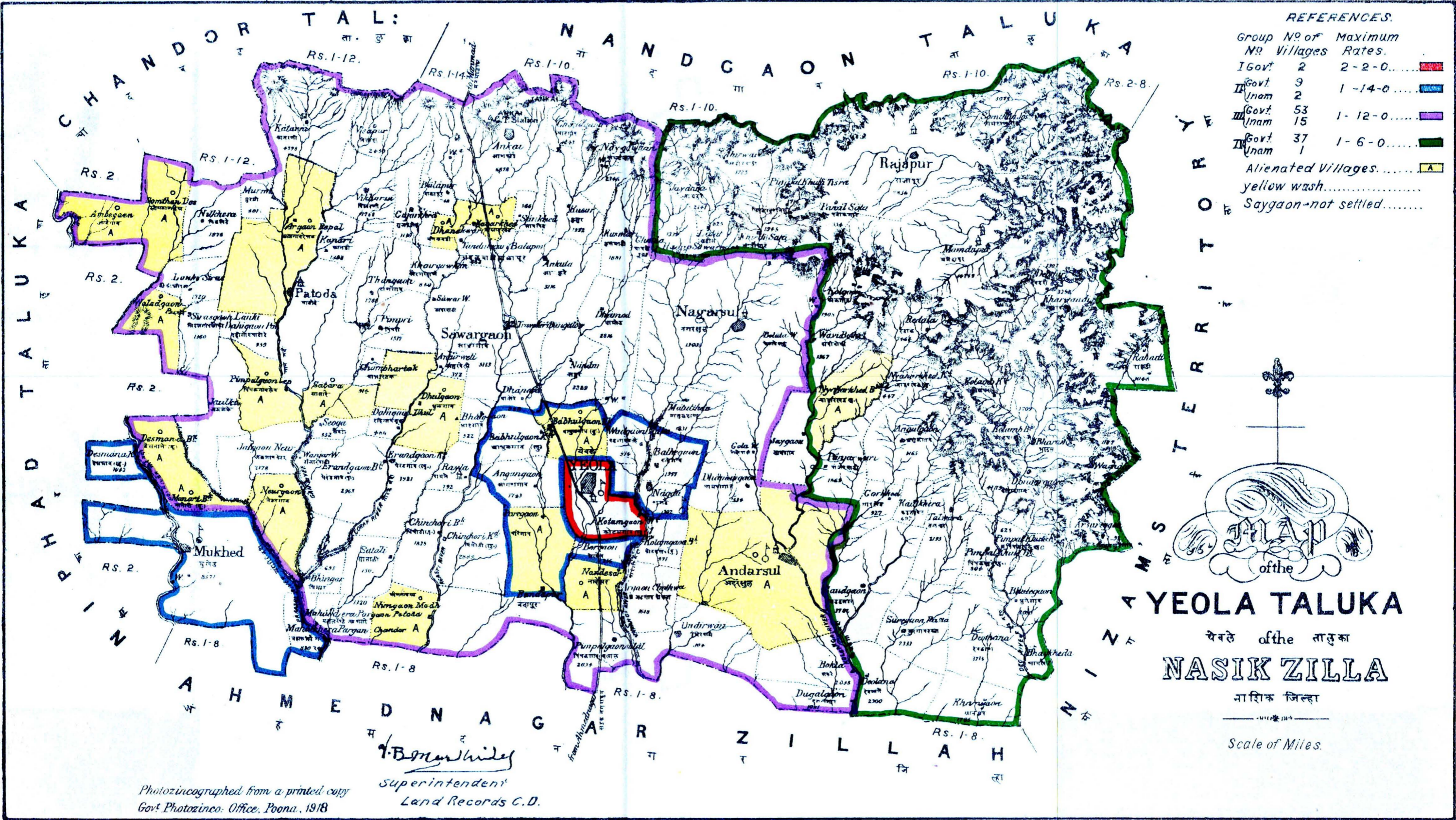
GANGAWARHA... NOT SETTLED




 of the
NASIK TALUKA
 of the
 NASIK COLLECTORATE
 Scale of Miles

Superintendent Land Records,
 C. D.
 Reduced to Scale
 Govt Photodupco. Office, Poona, 1918.

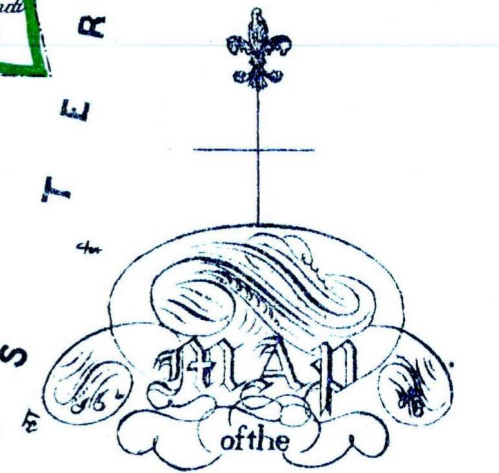
Map showing the grouping and rating as finally Sanctioned by Govt.



REFERENCES.

Group	No. of Govt. Inam	No. of Villages	Maximum Rates
I	Govt. 2		2-2-0
II	Govt. 9		1-14-0
III	Govt. 53		1-12-0
IV	Govt. 15		1-12-0
	Govt. 37		1-6-0
	Inam 1		1-6-0

Alienated Villages..... A
 yellow wash.....
 Saygaon-not settled.....



YEOLA TALUKA
 येवले of the तालुका
NASIK ZILLA
 नाशिक जिल्हा

Scale of Miles.

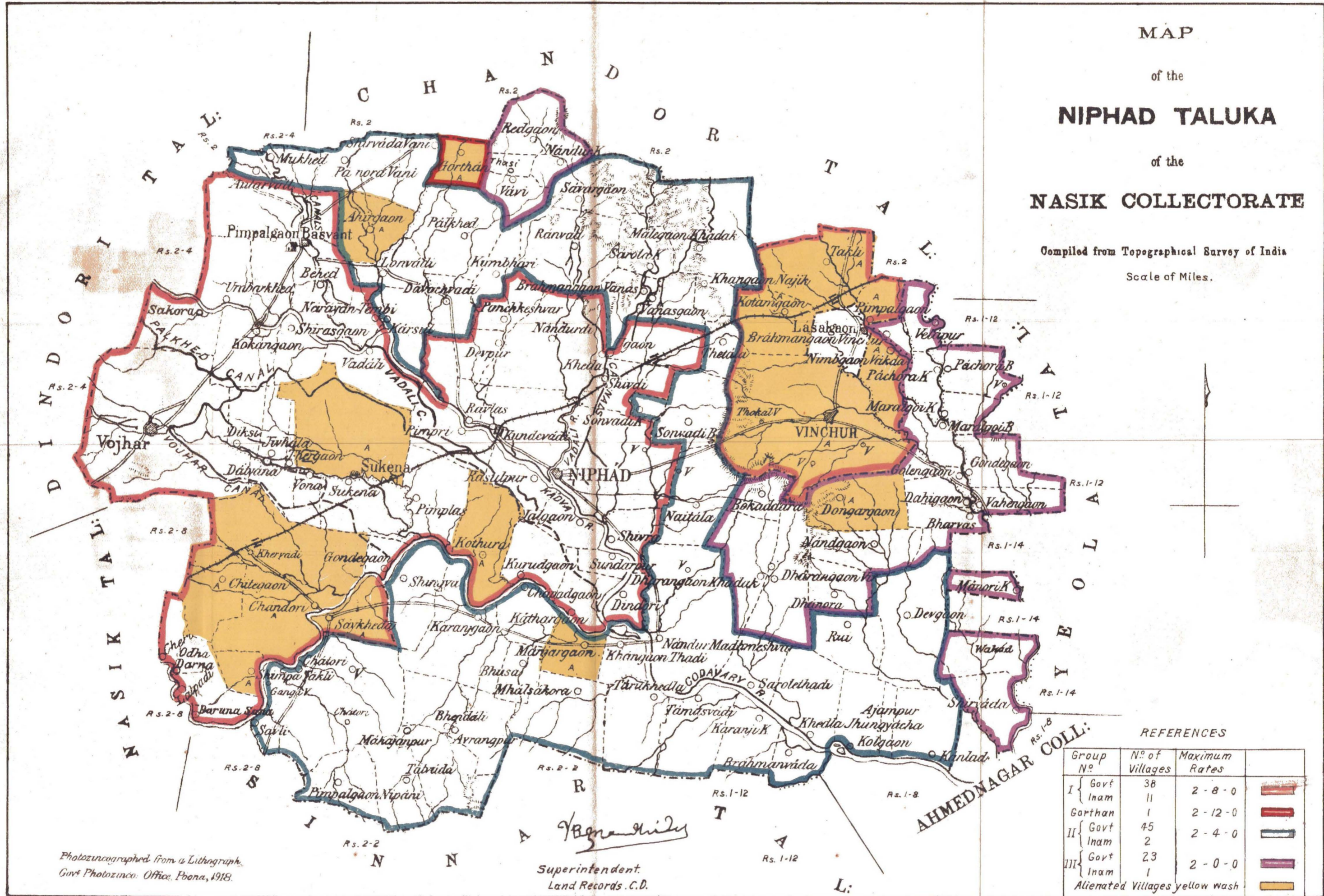
Photozincographed from a printed copy
 Govt. Photozinc. Office, Poona, 1918

I. B. Manshildes
 Superintendent
 Land Records C.D.

Map showing the grouping and rating as finally sanctioned by Government.

MAP
of the
NIPHAD TALUKA
of the
NASIK COLLECTORATE

Compiled from Topographical Survey of India
Scale of Miles.

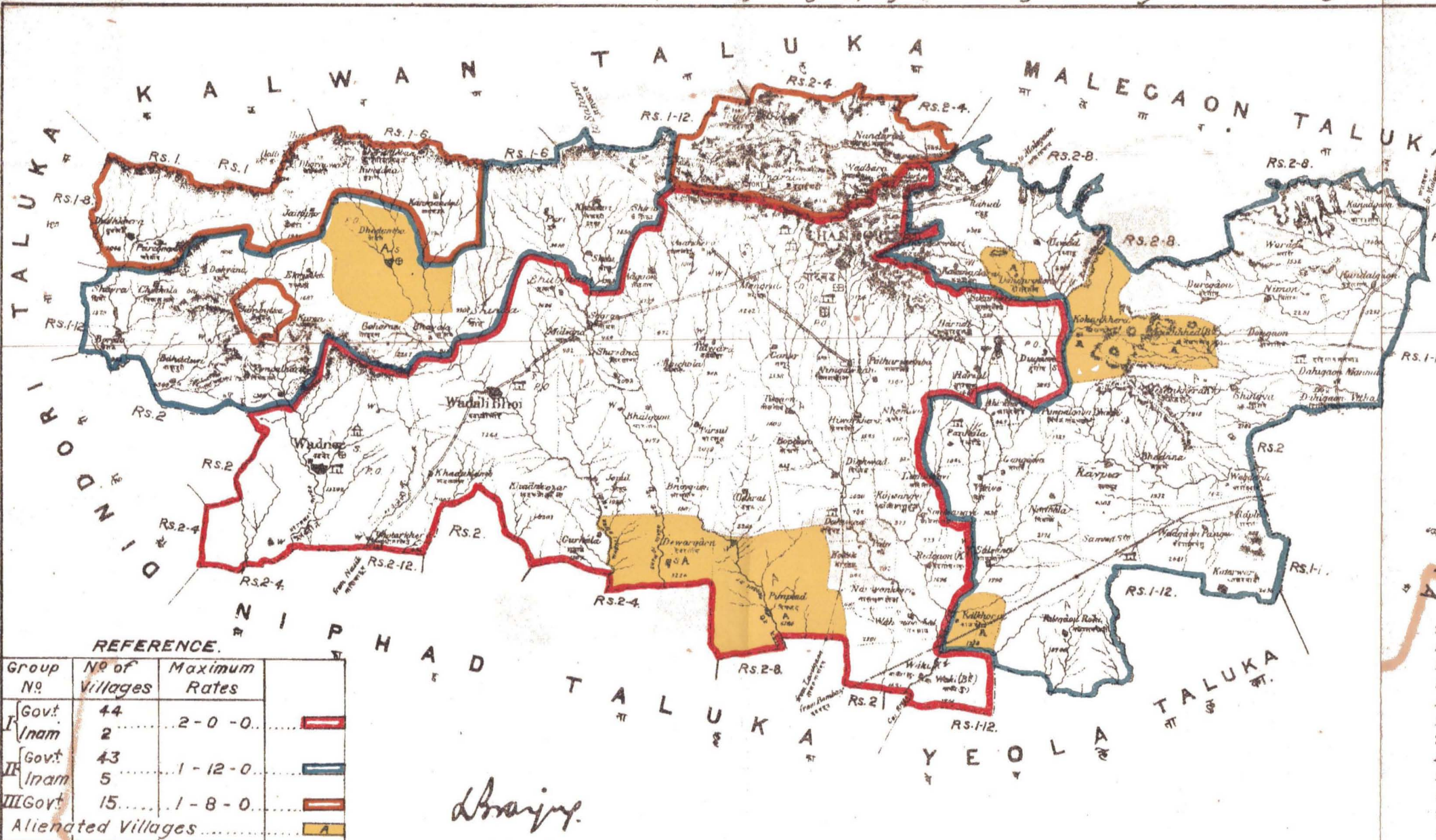


Photozincographed from a Lithograph.
Govt Photozinc. Office, Poona, 1918.

Superintendent.
Land Records. C.D.

REFERENCES			
Group No.	No. of Villages	Maximum Rates	
I	Govt	38	[Red Box]
	Inam	11	
Gorthan		1	[Red Box]
			2-12-0
II	Govt	45	[Blue Box]
	Inam	2	
III	Govt	23	[Purple Box]
	Inam	1	
Alienated Villages yellow wash			[Yellow Wash Box]

Map showing the grouping and rating as finally sanctioned by Govt.



of the
CHANDOR TALUKA
 चांदवड of the तालुका
NASIK ZILLA
 नाशिक जिल्हा

Scale of Miles.

REFERENCE.

Group No.	No of Villages	Maximum Rates	
I Govt Inam	44	2-0-0	
II Govt Inam	43	1-12-0	
III Govt Alienated Villages	5	1-8-0	

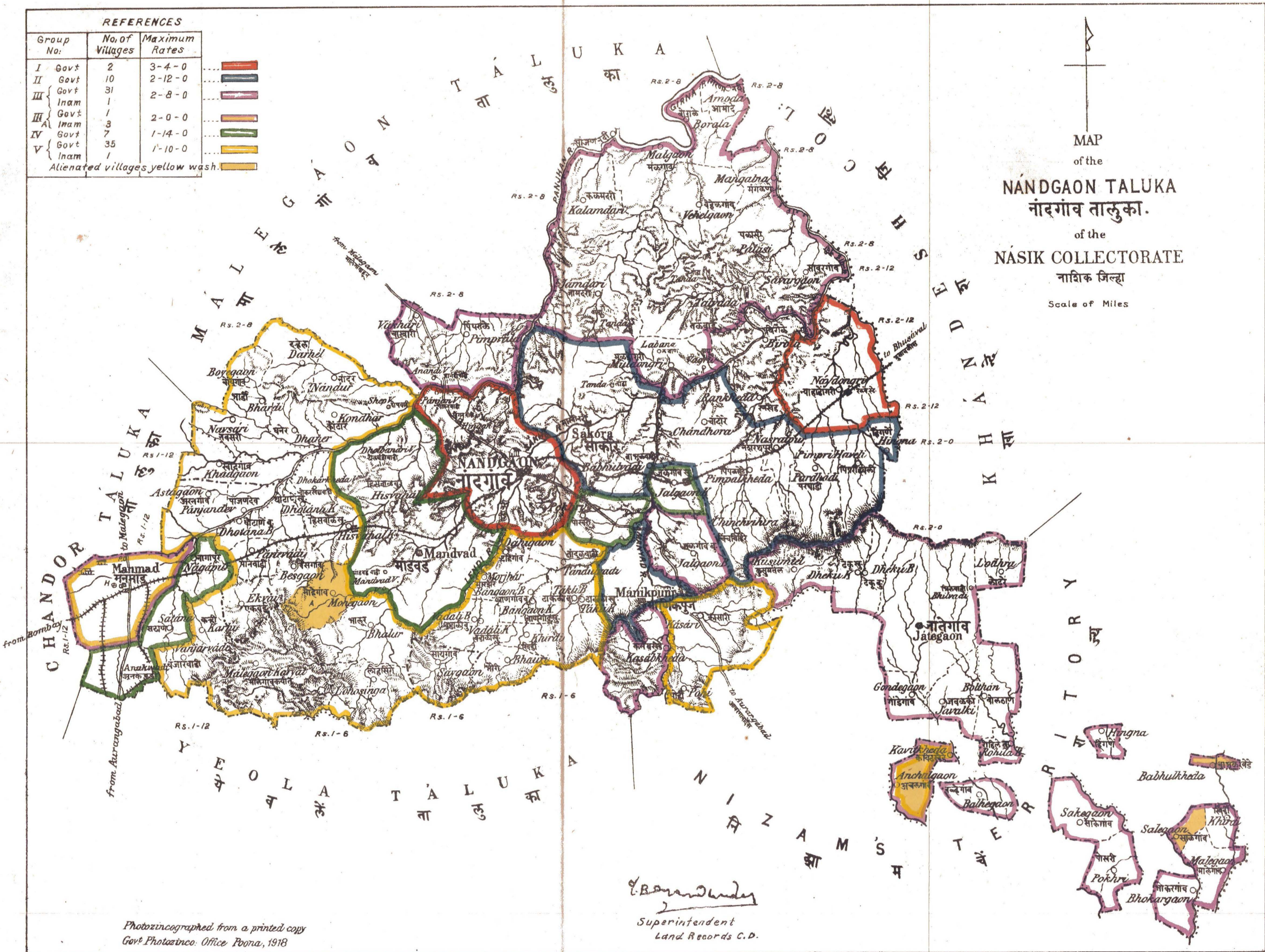
Abraijy.
 Superintendent,
 Land Records, G. D.
 Photoincographed from a Lithograph
 Govt Photoinc. Office, Poona, 1918.

REFERENCE

Taluka Head Quarter and Bazar Town		Places of Pilgrimage	
Petha Head Quarter and Bazar Town		Petha Boundary	
Kasba and Bazar Village		Mettled Roads	
Bazar Village		Unmettled Roads	
Deser ved Village		Other Roads and Cart Tracks	
Dist. Bungalow		Railway and Station	
Traveller's Bungalow		Junks and Canals	
Forest Rest House		Salt Pan	
P. W. D. Rest House		Inam Village	
Dharmshala		Jaghir Village	
Post Office	P. O.	Dumala Village	
School	S.	Esat Village	
Hospitai	H.	G. T. S. Station	
Dispensary	D.	L. A. N. S. Station	
Municipality	M	Shukati Inam Village	S. I.

Map showing the grouping and rating as finally sanctioned by Government.

REFERENCES		
Group No:	No. of Villages	Maximum Rates
I Govt	2	3-4-0
II Govt	10	2-12-0
III Govt	31	2-8-0
III Inam	1	2-0-0
III Govt	1	2-0-0
III Inam	3	2-0-0
IV Govt	7	1-14-0
IV Govt	35	1-10-0
V Inam	1	1-10-0
Alienated villages yellow wash		

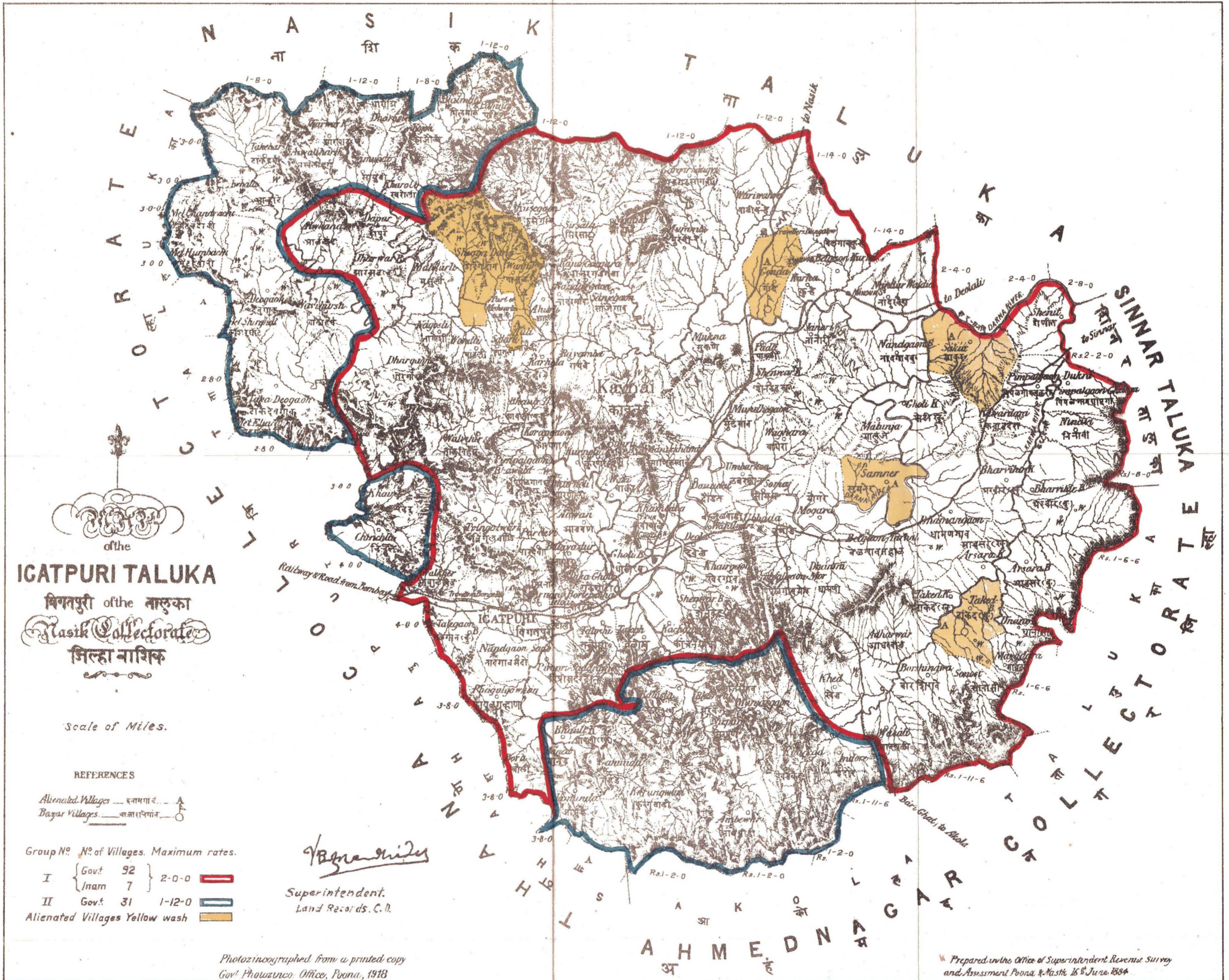


MAP
of the
NANDGAON TALUKA
नांदगांव तालुका.
of the
NASIK COLLECTORATE
नाशिक जिल्हा
Scale of Miles

L. B. Bhandari
Superintendent
Land Records C. D.

Photozincographed from a printed copy
Govt. Photozinc. Office Poona, 1918

Map Showing the grouping and rating as finally Sanctioned by Government.



IGATPURI TALUKA
 विगतपुरी of the नासिक
Nasik Collectorate
 जिल्हा नासिक

Scale of Miles.

REFERENCES

Alienated Villages — नाममात्र — A
 Bazar Villages — बाजारविगाव — O

Group No.	No. of Villages.	Maximum rates.
I	Govt. 92	2-0-0
	Inam 7	
II	Govt. 31	1-12-0

Alienated Villages Yellow wash

B. Narasimulu
 Superintendent.
 Land Records, C. D.

Photoincographed from a printed copy
 Govt. Photodupl. Office, Poona, 1918

Prepared in the Office of Superintendent Revenue Survey
 and Assessment Poona & Nashik 16th June 1894

Map showing the grouping and rating as finally Sanctioned by Government.

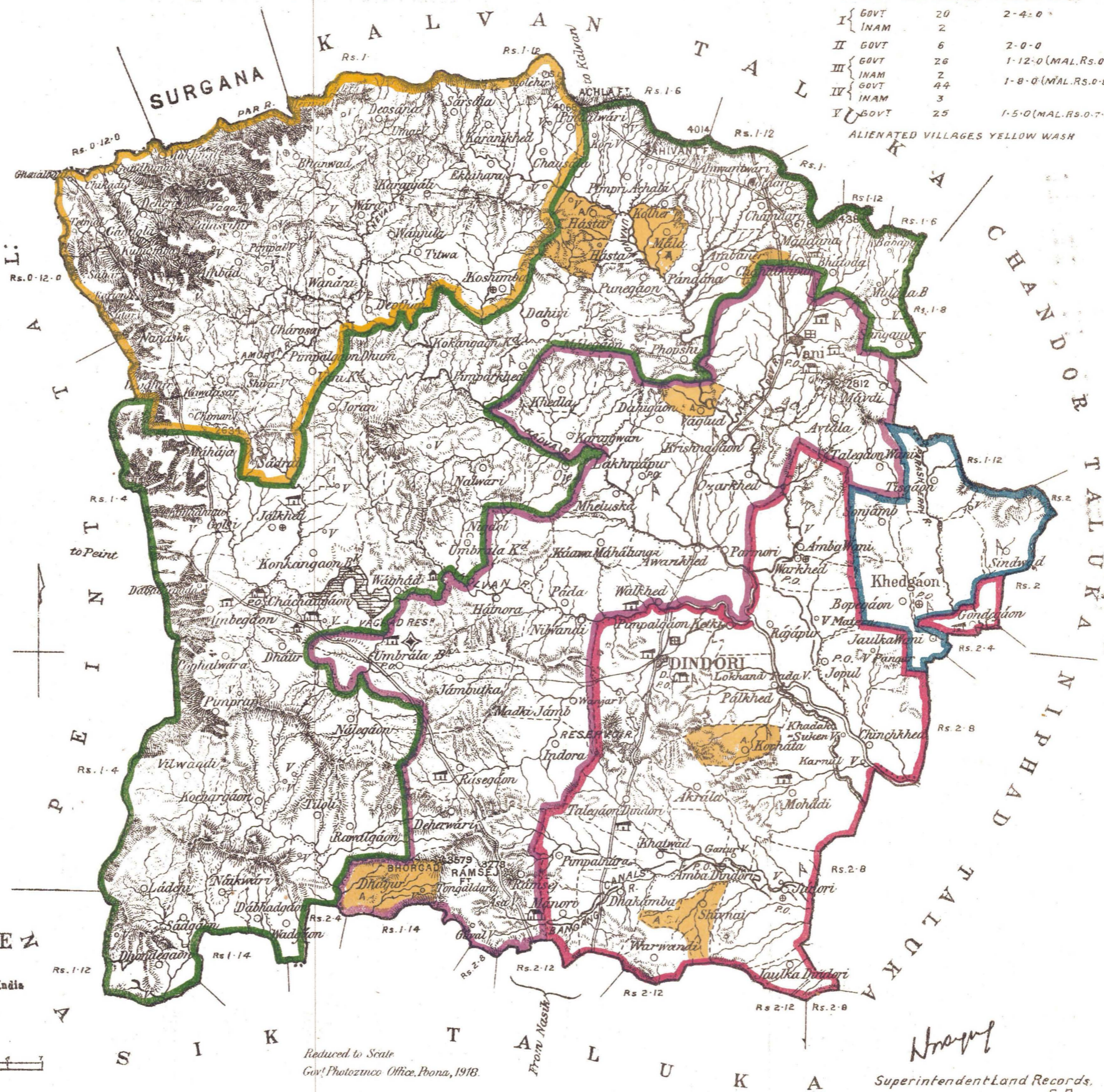
REFERENCES.		
GROUP NO	NO OF VILLAGES	MAXIMUM RATES
I	GOVT	20
	INAM	2
II	GOVT	6
	INAM	26
III	GOVT	26
	INAM	2
IV	GOVT	44
	INAM	3
V	GOVT	25



ALIENATED VILLAGES YELLOW WASH

- REFERENCE
- Teluka Head Quarter and Bazar Town
 - Petha do do do
 - Kasba and Bazar Village
 - Bazar Village
 - Deserted Village
 - Dist. Bungalow
 - Treveller's Bungalow
 - Forest Rest House
 - P. W. D. Rest House
 - P. W. D. Inspection Bungalow
 - P. W. D. Irrigation Bungalow
 - Dharmshala
 - Post Office
 - Telegraph Office
 - Hospital
 - Dispensary
 - Municipality
 - Places of Pilgrimage
 - Petha Boundary
 - Metalled Roads
 - Unmetalled Roads
 - Provincial Road under construction
 - Other Roads and Cart Tracks
 - Railway and Station
 - Tanks
 - Canals
 - Salt Pan
 - Inam Village
 - Jaghir Village
 - Esafat Village
 - β.T.S. Station (Altitude)
 - Lamanitanda
 - Sherkati Inam Village
 - Taluka Local Board Rest House
 - Mahal
 - Tarf
 - Port
 - Ferry
 - Police Station

In cases in which all the tanks in a village have not been shown on the map, the symbol T (2), T (7) etc. has been used to indicate the total number of tanks in the Village. The tanks shown or indicated on the map are all first and second class irrigation tanks.



MAP
of the
DINDORI TALUKA
of the
NASIK COLLECTORATE

Compiled from Topographical Survey of India



Scale of Miles.

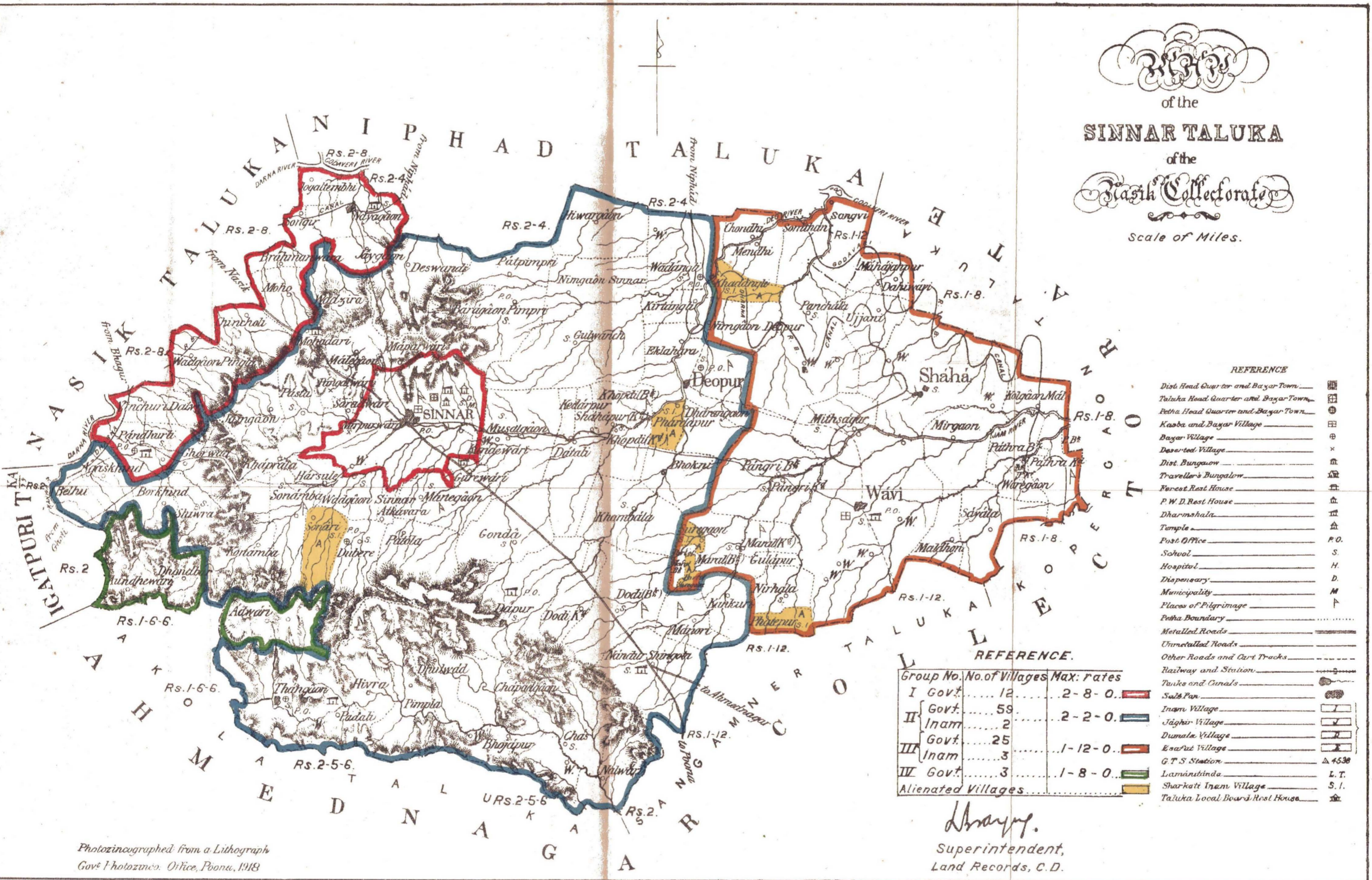


Reduced to Scale
Govt Photodupco Office, Poona, 1918.

Handwritten signature
Superintendent Land Records,
G.D.

Map showing the grouping and rating as finally sanctioned by Government.


 of the
SINNAR TALUKA
 of the

Basik Collectorate
 Scale of Miles.



REFERENCE

- Dist. Head Quarter and Bazar Town
- Taluka Head Quarter and Bazar Town
- Patha Head Quarter and Bazar Town
- Kasba and Bazar Village
- Bazar Village
- Deserted Village
- Dist. Bungalow
- Traveller's Bungalow
- Forest Rest House
- P. W. D. Rest House
- Dharmshala
- Temple
- Post Office
- School
- Hospital
- Dispensary
- Municipality
- Places of Pilgrimage
- Patha Boundary
- Metalled Roads
- Unmetalled Roads
- Other Roads and Cart Tracks
- Railway and Station
- Tracks and Canals
- Salt Pan
- Inam Village
- Jaghir Village
- Dumala Village
- Esauat Village
- G. T. S. Station
- Lamanbinda
- Sharkati Inam Village
- Taluka Local Board Rest House

REFERENCE.

Group No.	No. of Villages	Max. rates
I Govt.	12	2-8-0
II Govt.	59	2-2-0
III Govt.	25	1-12-0
IV Govt.	3	1-8-0
Alienated Villages		

Shayy.
 Superintendent,
 Land Records, C. D.

Photozincographed from a Lithograph
 Govt. Photozinc. Office, Poona, 1918