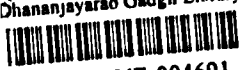


Dhananjayrao Gadgil Library



GIPE-PUNE-004691

STUDIES IN ECONOMICS AND POLITICAL SCIENCE

Edited by

THE DIRECTOR OF THE LONDON SCHOOL OF ECONOMICS AND
POLITICAL SCIENCE

No. 59 in the series of Monographs by writers connected with
the London School of Economics and Political Science

THE INEQUALITY OF INCOMES

Some Aspects of
The Inequality of Incomes
in Modern Communities

BY

HUGH DALTON, M.A., D.Sc. (Econ.), M.P.

*Reader in Economics in the
University of London*

*Author of "Principles of Public Finance," "The Capital Levy
Explained," etc*

SECOND IMPRESSION

with a new Appendix on "The Measurement
of the Inequality of Incomes."

LONDON

GEORGE ROUTLEDGE & SONS, LTD.

NEW YORK : E. P. DUTTON & CO.

1925

X:31

15

4691

Reprinted by the "Obral" process by
OSCAR BRANDSTETTER, LEIPZIG (SAXONY)

ισότητα δ' αἰροῦ καὶ πλεονεξίαν φύγε.

MENANDER.

"The drift of economic science during many generations has been with increasing force towards the belief that there is no real necessity, and therefore no moral justification, for extreme poverty side by side with great wealth."

MARSHALL.

"On aperçoit dans le commencement de l'humanité le commencement de son mal. La racine de l'abus, c'est l'héritage.

. . . C'est jusque-là, jusqu'au droit monstrueux des morts, qu'il faut tracer une ligne droite et nettoyer les ténèbres. La transmission des biens et des pouvoirs, quels qu'ils soient, des morts à leurs descendants, n'est pas conforme à la raison et à la morale. . . . Chacun doit occuper dans la destinée commune une situation due à ses œuvres et non au hasard.

. . . L'héritage, forme concrète et palpable de la tradition. . . ."

BARBUSSE, *Clarté*.

PREFACE

WHILE studying economics at Cambridge in 1909-10, I became specially interested in those books, or parts of books, which set out to discuss the distribution of income. I gradually noticed, however, that most "theories of distribution" were almost wholly concerned with distribution as between "factors of production." Distribution as between persons, a problem of more direct and obvious interest, was either left out of the textbooks altogether, or treated so briefly, as to suggest that it raised no question, which could not be answered either by generalisations about the factors of production, or by plodding statistical investigations, which professors of economic theory were content to leave to lesser men.

This state of things appeared to me to be very unsatisfactory, and my opinion was strengthened, when I read certain criticisms by Professor Cannan upon existing theories of distribution and still more when, at a later stage, I came into personal contact with his teaching in London.

In 1911 I was elected to the Hutchinson Research Studentship at the London School of Economics, and began a study of the causes of the inequality of incomes in modern communities, with special reference to the effects of inherited wealth. But this scheme gradually broadened in several directions. In the first place I was led to examine more closely the historical development of the theory of distribution.

In the second place, as a preliminary to, and as a partial basis of, my main enquiry, I attempted to extend the existing theory regarding the division of the total income of a community between different categories and, in particular, between different factors of production. In the third place, I attempted to compare statistically the inequality of incomes in different communities. Here I was struck, on the one hand, by the inadequacy of the available statistics, and on the other by the ambiguity of the conception of "inequality," and the need to give it, with special reference to incomes, a more precise definition and a logical measure. For many of the measures proposed by writers on the subject seemed empirical, ill-supported by argument, and sometimes even contradictory in their results. In the fourth place, I tried to reach definite conclusions regarding various proposals designed to reduce inequality without injury to productive power.

By the summer of 1914 I had completed the first two Parts of the book as it now stands, and collected a considerable amount of material for the remaining Parts. After the outbreak of war my work was interrupted by more than four years of military service, and I was not free to take it up again till May, 1919. With a view to early publication, I then recast my scheme, putting aside a large quantity of the material which I had hoped to use. In particular, I have dropped out all discussion of the measurement of inequality, on which subject I hope shortly to publish a self-contained study.

In Part I., then, I enquire how the great inequality of incomes in modern communities strikes modern minds, especially at the immediate close of the war, and how far ethical first principles give any guidance in regard to it.

In Part II., I sketch the growth of the theory of distribution in the hands of successive generations of economists.

It is an inevitable result of the revision of my pre-war plans that this part of the book should seem disproportionately long.

The theory developed in Part III., on the subject of the division of income between categories, is very much a skeleton. But even a skeleton is easier to clothe than a ghost, and it is only the ghost of a theory on this subject that can be discovered in existing textbooks. I shall watch hopefully for later writers, who will clothe my skeleton with flesh, or even, perhaps, re-arrange its bones.

In Part IV., in discussing the division of income between persons and the causes of the inequality of incomes, I have deliberately laid great stress on the factor of inherited wealth, owing to its neglect by most other writers. In Chapter X. of Part IV. I have brought together a number of tentative suggestions for the practical reform of the law of inheritance. But I have not attempted to discuss the probable effects, on inequality and on productive power, of the various projects now current for the reorganisation of industry, in whole or in part, on a Socialistic basis. For both thought and action in this matter are moving rapidly in many parts of the world, and any adequate discussion would need to be lengthy, while present conclusions, especially as regards production, may soon be modified by new experience.

My obligations to Professor Cannan, as regards the general conception of the book, have already been indicated. I have further to thank him for many criticisms on points of detail. Sir Arthur Peterson and Mr. T. E. Gregory have also given me the benefit of their judgment on particular points.

HUGH DALTON.

*London School of Economics,
March, 1920.*

NOTE

The page references to Mill's *Principles of Political Economy* are to Ashley's (1909) Edition, to Marshall's *Principles of Economics* to the fifth edition, to Professor Taussig's *Principles of Economics* to the first edition, and to Professor Nitti's *Scienza delle Finanze* to the fourth Italian edition.

CONTENTS

	PAGE
PREFACE	vi.
PART I. SOME ETHICAL ASPECTS OF THE INEQUALITY OF INCOMES.	
Chapter I. ECONOMIC CONTRASTS AND THE MODERN SPIRIT	3
Chapter II. ECONOMIC WELFARE AND THE INEQUALITY OF INCOMES	9
Chapter III. JUSTICE AND THE INEQUALITY OF IN- COMES	17
PART II. THE HISTORICAL DEVELOPMENT OF THE THEORY OF DISTRIBUTION.	
Chapter I. THE USE AND ABUSE OF THE HISTORICAL METHOD IN THE STUDY OF ECONOMIC THEORY	33
Chapter II. FIRST PERIOD . BEFORE 1776	37
Chapter III. SECOND PERIOD : 1776-1817	40
Chapter IV. THIRD PERIOD : 1817-1848	50
Chapter V. FOURTH PERIOD : 1848-1871	61
Chapter VI. FIFTH PERIOD : 1871-1890	86
Chapter VII. SIXTH PERIOD : 1890-1911	106
Chapter VIII. SEVENTH PERIOD : 1911-1918	142
PART III. THE DIVISION OF INCOME BETWEEN CATEGORIES.	
Chapter I. ABSOLUTE AND RELATIVE SHARES	159
Chapter II. THE MEANING OF INCOME	162
Chapter III. THE SOURCES OF INCOME	172
Chapter IV. AGGREGATE INCOME FROM CIVIL RIGHTS AND FROM PRIVATE GIFTS	180
Chapter V. THE DIVISION OF INCOME BETWEEN A NUMBER OF FACTORS OF PRODUCTION	185
Note to Chapter V. THE CONCEPTION OF ELASTICITY OF DEMAND AND SUPPLY	192

	PAGE
Chapter VI. THE DIVISION OF INCOME BETWEEN WORKERS AND PROPERTY OWNERS	198
Note to Chapter VI STATISTICS BEARING ON THE DIVISION BETWEEN WORKERS AND PROPERTY OWNERS	207
Chapter VII THE EFFECTS OF INVENTIONS	210
Chapter VIII. THE EFFECTS OF CHANGES IN THE CHARACTER OF CONSUMERS' DEMAND.	218
Chapter IX THE SHARE OF THE LANDOWNER	221
Chapter X CHANGES IN THE RELATIVE IMPORTANCE OF DIFFERENT INDUSTRIES	229
Chapter XI CATEGORIES AND PERSONS	235

PART IV. THE DIVISION OF INCOME
BETWEEN PERSONS.

✓ Chapter I THE GENERAL CAUSES OF THE IN- EQUALITY OF INDIVIDUAL INCOMES	309
Chapter II. INEQUALITY OF INCOMES FROM CIVIL RIGHTS AND PRIVATE GIFTS	246
Chapter III INEQUALITY OF INCOMES FROM WORK	252
Chapter IV. INEQUALITY OF INCOMES FROM PROPERTY	271
Chapter V. INEQUALITY AND INHERITED WEALTH.	281
Chapter VI THE COMPARATIVE NON-FISCAL LAW OF THE INHERITANCE OF WEALTH.	287
Chapter VII. THE COMPARATIVE EFFECTS OF THE NON- FISCAL LAW OF INHERITANCE	296
Chapter VIII. THE COMPARATIVE EFFECTS OF CUSTOM WITHIN THE LIMITS OF THE NON- FISCAL LAW	303
Chapter IX. THE COMPARATIVE FISCAL LAW OF INHERITANCE AND ITS COMPARATIVE EFFECTS	311
Chapter X SOME SUGGESTIONS FOR THE REFORM OF THE LAW OF INHERITANCE	328
Note to Chapter X. INHERITANCE AND LIFE INSURANCE	344
Chapter XI. SOME FINAL CONSIDERATIONS ON THE INEQUALITY OF INCOMES	346
INDEX TO NAMES OF PERSONS	354
INDEX TO SUBJECT MATTER	358

INDEX TO NAMES OF PERSONS.

- Acton, 290.
 Amos, 290.
 Anson, 178, 261, 290.
 Aristotle, 91.
 Arnold, 248.
 Ashley, 38, 69, 151, 233.
 Bagehot, 47, 77.
 Bagshot, 4.
 Bancroft, 313.
 Bastiat, 73-77, 84, 85, 134.
 Bechhofer, 270.
 Beethoven, 265.
 Belloc, 282.
 Benini, 129.
 Bentham, 21, 43-47, 64,
 103, 123, 174, 311, 332,
 352.
 Bernstein, 81, 131, 135.
 Berthelot, 224
 Bluntschli, 311
 Böhm-Bawerk, 91
 Bowley, 4, 207-209, 230, 231
 Bradlaugh, 175
 Brentano, 199, 270
 Brown, 290
 Bryce, 291, 292, 304
 Burdett, 290
 Burke, 284
 Burns, John, 310
 Burns, Robert, 41
 Burt, 310
 Cairnes, 60
 Cannan, 9, 17, 20, 25, 26,
 28, 40, 47, 53-55, 64,
 67, 72, 90, 105, 106, 118,
 123, 136-141, 144, 147,
 149-151, 162-165, 169,
 198, 204, 207, 216, 223,
 235, 239, 240, 243, 252,
 258, 264, 265, 271-273,
 282
 Cantillon, 37, 38, 252
 Carey, 73, 74, 76, 84, 85
 Carlyle, 47, 72
 Carnarvon, 310
 Carnegie, 240
 Carter, 290
 Carver, 114, 122
 Cassel, 39, 112, 133, 201,
 217, 273, 278
 Chamberlain, Austen, 316
 Chamberlain, Joseph, 165
 Chaplin, 263
 Chapman, 111, 112, 114,
 122, 126, 139, 267
 Churchill, Randolph, 313
 Churchill, Winston, 313
 Clark, 24, 59, 85, 115-119,
 122, 136, 139, 142, 147,
 210
 Cleveland, 310
 Colson, 121, 133, 134
 Copernicus, 37
 Cournot, 59
 Courtauld, 273
 Cunynghame, 170
 Curzon, 310
 Darwin, 265
 Dicey, 176, 287
 Dickinson, 264

- Dühring, 74
 Edgeworth, 59, 113, 114,
 122, 159, 186
 Ely, 123, 129-131, 150-152,
 174, 241, 249, 272, 275,
 276, 292, 293, 298, 313,
 332, 333, 351
 Engels, 79, 126
 Esher, 310
 Euler, 186
 Eve, 306
 Ferrara, 74
 Field, 153
 Fisher, 112, 133, 145, 146,
 273-275, 298, 304, 342,
 349, 350
 Flux, 186
 Fourier, 50, 51
 Foxwell, 72, 123, 152
 Gammond, 305
 Gans, 289
 Gattie, 226
 George, Henry, 54, 55, 94,
 97-99, 153, 154
 George, Lloyd, 252, 310
 Gide, 126
 Gonner, 324
 Gossen, 90
 Gould, 326
 Graziani, 293, 299, 311
 Greg, 212
 Guyot, 134
 Hadley, 24, 122
 Haldane, 331
 Hall, 310
 Halsbury, 331
 Hammond, 284
 Haney, 37, 50, 52, 58, 59,
 69, 76, 115, 134
 Harcourt, 313, 326
 Herbert, 310
 Higgs, 87
 Hildebrand, 77, 78
 Hobhouse, 289
 Hobson, 13, 72, 73, 122, 123,
 150, 151, 262, 305
 Hopkinson, 332
 Huet, 317
 Hume, 39
 Hunter, 289
 Huxley, 24
 James, 5
 Jevons, 13, 36, 37, 59, 72,
 77, 86-90, 101, 106, 107
 Johnson, A. S., 215, 316
 Johnson, Dr., 302
 Johnson, Mrs., 306
 Kenny, 270
 Keynes, J. N., 77
 Keynes, J. M., 8, 14, 49
 Kirkup, 50
 Knies, 77
 Landry, 133
 Lassalle, 79, 83
 Layton, 114, 145, 349
 Lea, 304
 Leroy-Beaulieu, 92-94 134,
 282
 Leslie, 77
 Letourneau, 289
 Leverhulme, 217
 Lloyd, Eyre, 289, 293, 294
 Loria, 4, 164, 169
 Macdonald, 162
 Macgregor, 161, 182, 265
 Mackenzie, 17
 Maetz, 15
 Maine, 5, 289
 Matland, 34, 227, 250, 289,
 290, 293, 330, 336
 Mallock, 21
 Malthus, 34, 47-49, 52, 60,
 69, 73, 106
 Marshall, 12, 14, 28, 36, 47,
 48, 51, 59, 61, 62, 89,
 104, 106-111, 117, 119,
 146, 150, 168, 183, 191-
 193, 196, 198, 201, 211.

356 THE INEQUALITY OF INCOMES.

- 217, 223, 225, 226, 231,
 232, 252, 258, 265, 279,
 300, 324
 Marx, 54, 55, 79-85, 99, 118,
 126, 131, 135
 McCulloch, 52, 55-60, 125
 Menger, 72, 91, 123
 Meredith, 240, 284
 Meyer, 310
 Mill, James, 55, 60
 Mill, J. S., 11, 18, 26, 27, 36,
 50, 51, 60-74, 77, 84, 85,
 87, 88, 90, 100, 103, 120,
 123, 137, 144, 154, 252,
 269, 273, 298-301, 310,
 311, 313, 332, 334, 336,
 340.
 Milner, D., 250
 Milner, Lord, 212
 Milton, 153
 Minghetti, 297
 Molinari, 134
 Money, 4, 136
 Moore, 231
 Morgan, 295
 Morley, 5, 34, 105, 305, 310
 Nelson, 175
 Newton, 265
 Nicholson, 120, 243, 244,
 258
 Nitti, 34, 166, 311, 344
 Odgers, 178
 Owen, 50
 Paine, 249
 Pantaleoni, 90, 243
 Pareto, 122, 126-128, 134,
 241, 271
 Paul, 154
 Petty, 39
 Pierson, 121, 127
 Pigou, 11, 26, 28, 33, 104,
 146-151, 161, 164, 173,
 181, 183, 186, 189, 196,
 198, 201, 212, 213, 215,
 216, 224, 243, 246, 250,
 265-267, 269, 271, 315,
 320, 322, 323, 325, 327,
 345, 347, 348, 351
 Pollock, 289, 290, 293
 Post, 289
 Quesnay, 38
 Read, 150, 153-155, 313,
 326, 332, 343
 Reckitt, 270
 Ricardo, 33, 34, 36, 49-55,
 60, 61, 67, 71, 77, 80,
 83-85, 88-90, 97, 99, 101,
 106, 113, 123, 223
 Richmond, 284
 Rignano, 123, 131-133, 148,
 298-300, 302, 316-327,
 340
 Rist, 126
 Robertson, 13, 14, 218, 262
 Rockefeller, 240
 Rodbertus, 79, 83
 Rodney, 175
 Roosevelt, 153, 310
 Roscher, 77-79, 84
 Rothschild, 310
 Rowntree, 347
 Ruskin, 72, 73
 Russell, 80
 Salisbury, 331
 Salmond, 174, 177, 178, 281
 Samuel, 346
 Sanger, 268
 Sankey, 15
 Say, 49, 52, 101, 113
 Schmoller, 91, 92, 284
 Seager, 121
 Séailles, 298
 Seligman, 169-171
 Sella, 298, 305, 308
 Senior, 56, 58, 60, 88
 Shakespeare, 265
 Shaw, 243
 Sidgwick, 12, 28, 49, 99-106,

INDEX TO NAMES OF PERSONS. 357

- 108, 113, 123, 146, 216,
278, 299, 331, 332
Smart, 21, 24, 114, 115, 120,
121, 258
Smith, Adam, 33, 36-38, 40-
43, 52, 54, 59, 67, 71, 77,
84, 85, 88, 108, 137, 154,
252
Smith, John, 307
Smith, Mayo, 308
Socrates, 105
Soveral, 310
Spencer, 24
Spender, 5, 22
Stamp, 14, 209
Stein, 285
St. Simon, 50, 126
Taft, 310
Taussig, 6, 7, 36, 60, 112,
142-145, 147, 204, 239,
244, 252, 258, 282, 283,
351
Taxis, 276
Temple, W., Senior, 19
Temple, W., Junior, 241
Thellusson, 305, 336
Thompson, Lyon, 306
Thornton, 68
Thünen, Von, 59
Tocqueville, 283
Topham, 291, 293, 295
Turgot, 38, 39
Underwood, 272, 292, 313
Wagner, 323
Walker, 94-97, 101, 106
Wallace, C. W., 306
Wallace, Mackenzie, 289
Wallace, Russell, 317
Wallas, 7, 283
Walras, 91
Watkins, 271, 274, 282, 303,
351
Webb, 135, 212, 246, 258,
266, 268, 344
West, 312
Westminster, 240
Wicksteed, 114, 122, 186,
353
Wieser, 91
Williams, 294
Wilson, John, 310
Wilson, Woodrow, 7, 21
Withers, 173, 264, 267, 284
351

INDEX TO SUBJECT MATTER.

- Capital Levy, 206, 347
Civil Rights, Income from, 25, 174-184, 246-251, 269, 347
Concentration of Capital, Law of, 81-82, 135
Consumers' Demand, Effect of Changes in, 218-220, 226-228
Contrasts, of Wealth and Poverty, 4
Contrasts of Economic Function, 15
Diminishing Marginal Utility, Law of, 10, 88, 90, 141
Economic Categories, and Persons, 54, 116, 124, 147, 159, 235-236
Economic Justice, Meaning of, 18
Economic Justice, Canons of, 19-26
Economic Justice and Economic Welfare, 27-29
Economic Justice, Attitude of Modern Economists Towards, 27-28
Economic Justice Said to be Found in Actual Distribution, 115, 118, 136
Education, 57, 104, 110, 112, 126, 149, 167, 264-268, 305, 308
Elasticity of Demand and Supply, 186-204, 222, 236
Escheat, 311
Factors of Production, 38, 40-42
Factors of Production, Absolute Shares of, 40, 71, 74-76, 98, 137, 159-161, 185-191, 198-206, 214, 217, 229-233
Factors of Production, Relative Shares of, 41, 52, 53, 71, 74-76, 84, 98, 101, 109, 114, 137, 159-161, 185-191, 198-209, 217, 219, 229-233
Gifts, as a Source of Income, 174, 180-183, 251
Gifts, *inter vivos*, 103, 181, 301, 307, 325, 326, 339
Historical Method in Study of Economic Theory, Abuse of, 33-34
Historical Method in Study of Economic Theory, Use of, 34-35
Historical Method in Study of Economic Theory, Application of, 35-36
Income, Meaning of, 162-171
Income, Sources of, 172-179

- Industries, Changes in relative Importance of, 229-234
- Inequality of Incomes,—
 Causes of, 54, 103, 111, 112, 122, 131, 140, 143, 151, 239-261, 271-278, 328
 Effects of, 10, 11, 44, 146, 219
 Increasing or Decreasing, 78, 92, 110, 134, 135, 160, 219, 351, 352
 In Relation to Growth of Population, 11, 104
 In Relation to Productive Power, 12, 14, 103, 104, 127, 140, 353
 Measurement of, 128, 133, 147, 352
 Methods of Reducing, 261-270, 278-280, 328, 345, 352
 Through Time, 149
- Inheritance, 38, 43-45, 50, 54, 55, 58, 64, 84, 91, 92, 94, 102, 111, 113, 133, 140, 144-146, 152-155, 168-171, 244, 272-274, 279-345
- Inheritance and Custom, 285, 287, 297, 303-310
- Inheritance and Life Insurance, 344-345
- Inheritance, Bequest, Freedom of, 46, 56, 57, 65, 66, 102, 129, 132, 285, 290, 293, 294, 297-300, 303, 304, 309, 312, 335-339
- Inheritance, Dower, Widow's Right to, 153, 293, 294
- Inheritance, Intestacy, 45, 56, 64, 65, 130, 144, 285, 288, 289, 294, 295, 301, 302, 314, 329-334
- Inheritance, Legitim, 46, 129, 130, 144, 288, 291-293, 297-305, 307, 309, 312, 333-335
- Inheritance, Neglected by Economists, 119 - 129, 281, 283
- Inheritance, Primogeniture, 56, 295, 302, 330
- Inheritance, Suggestions for Reform in Law of, 328-343
- Inherited Wealth, Taxation of, 54, 55, 120, 130, 132, 133, 144, 152-155, 285, 287, 299, 311-328, 336, 337, 339-341, 344
- Institutional economics, 271, 272
- Inventions, 93, 102, 132, 210-218, 223-225, 227
- Inventions, Capital-saving, 214-217, 223, 225
- Inventions, Labour-saving, 212-215, 217, 223
- Inventions, Land-saving, 214, 223-225
- Land and Capital, Distinction between, 40, 84, 99, 101, 109, 115, 172, 173, 201
- Land, Distribution of, 274, 275
- Land, "Unearned Increment" of, 42, 66, 67, 98, 103, 113, 273
- Land, Uneconomic Holdings, 300
- Landowner, Absolute and Relative Shares of, 221-228, 232, 233
- Marriage Customs, 307, 308

- Minimum Standards, 110, 135, 148, 246
 Mobility, of Individuals between Different Classes and Employments, 6, 68, 96, 267, 268, 308
 Monopoly, 89, 103, 113, 166, 344, 345, 347, 348
 Population, Growth of, 47-49, 55, 69-70, 199, 227
 Poverty, Problem of, 3, 4, 16, 61
 Property, 43, 44, 54, 62-64, 132, 152, 271-280
 Property, Public and Private, 276-278
 Public Assets Commissioners, 341, 342
 Public Finance, 346, 347
 Public Trustee, 333, 334, 337-340
 Quasi-rent, 108, 109
 Rule against Accumulations, 291, 292, 296, 335, 336
 Rule against Perpetuities, 291, 292, 296, 336
 Saving, 64, 103, 131, 148, 272, 273, 278, 299, 301, 322-325, 327, 342
 Social Provision, 246-248
 Speculation, 94, 145, 278
 Subjective Costs of Production, 13, 14
 Subsidies, 347
 Unrest, Causes of, 5-8
 Value, Theory of, 88, 89, 107, 142
 Value, Theory of, in Relation to Theory of Distribution, 62, 89, 100, 108, 111, 118, 138
 Value, Marginal Theories of, 54, 59, 90, 101, 107, 108, 117, 143
 Value of Money, Changes in, 348-351
 Value, Surplus, 80, 81
 Wages, and Productivity, 90, 94
 Wages, and Subsistence, 97, 154
 Wages as a Residue, 95
 Wages, Differences of, in Different Occupations, 38, 41, 67, 68, 252-261
 Wages, Iron Law of, 80, 83
 Wages Fund, 58-60, 69, 70, 87, 95

APPENDIX¹

THE MEASUREMENT OF THE INEQUALITY OF INCOMES

1. It is generally agreed that, other things being equal, a considerable reduction in the inequality of incomes found in most modern communities would be desirable. But it is not generally agreed how this inequality should be measured. The problem of the measurement of the inequality of incomes has not been much considered by English economists. It has attracted rather more attention in America, but it is in Italy that it has hitherto been most fully discussed. The importance of the problem has been obscured by the inadequacy of the available statistics of the distribution of income in all modern communities. To such statistics as we have, no very fine measures can be applied. The improvement of these statistics is the business of statisticians, but the problem of measuring and comparing the inequalities, which improved statistics would more precisely reveal, should be capable of theoretical solution now. No complete solution is presented in this paper, but only a discussion of certain points of principle and method.

2. First, as to the nature of the problem. An American writer has expressed the view that "the statistical problem before the economist in determining upon a measure of the inequality in the distribution of wealth is identical with that of the biologist in determining upon a measure of the inequality in the distribution of any physical characteristic."² But this is clearly wrong. For the economist is primarily interested, not in the distribution of income as such, but in the effects of the distribution of income upon the distribution and total amount of economic welfare, which may be derived from income. We have to deal, therefore, not merely with one variable, but with two, or possibly more, between which certain functional relations may be presumed to exist.

A partial analogy would be found in the problem of

¹ Reprinted from the *Economic Journal*, Sept., 1920.

² Persons, *Quarterly Journal of Economics*, 1908-9, p. 437.

measuring the inequality of rainfall in the various districts of a large agricultural area. From the point of view of the cultivator, what is important is not rainfall as such, but the effects of rainfall upon the crop which may be raised from the land. Between rainfall and crop there will be a certain relation, the discovery of which will be a matter of practical importance. The objection to great inequality of rainfall is the resulting loss of potential crop. The objection to great inequality of incomes is the resulting loss of potential economic welfare.

Let us assume, as is reasonable in a preliminary discussion, that the economic welfare of different persons is additive, that the relation of income to economic welfare is the same for all members of the community, and that, for each individual, marginal economic welfare diminishes as income increases. Then, if a given income is to be distributed among a given number of persons, it is evident that economic welfare will be a maximum, when all incomes are equal. It follows that the inequality of any given distribution may conveniently be defined as the ratio of the total economic welfare attainable under an equal distribution to the total economic welfare attained under the given distribution. This ratio is equal to unity for an equal distribution, and is greater than unity for all unequal distributions. It may, therefore, be preferred to define inequality as this ratio minus unity, but for comparative purposes this modification of the definition is unnecessary. Inequality, however, though it may be *defined* in terms of economic welfare, must be *measured* in terms of income.

3. Starting from the above definition, it is clear that, if we assume any precise functional relation between income and economic welfare, we can deduce a corresponding measure of inequality. It is also clear that, under this procedure, no *one* measure of inequality will emerge, whose appropriateness will be independent of the particular functional relation assumed.

The procedure suggested may be illustrated by two

examples. Take, first, the hypothesis that proportionate additions to income, in excess of that required for "bare subsistence," make equal additions to economic welfare. This is Bernoulli's hypothesis, except that economic welfare is substituted for satisfaction.¹

Then, if w = economic welfare and x = income, we have

$$dw = \frac{dx}{x},$$

or $w = \log x + c.$

If x_1, x_2, \dots, x_n are individual incomes, whose arithmetic mean is x_a and geometric mean x_g , the corresponding measure of inequality is, by our definition

$$\frac{n \log x_a + nc}{n \log x_g + nc} = \frac{\log x_a + c}{\log x_g + c}.$$

If we assume that, when $x=1$, $w=0$, then $c=0$, and our measure of inequality becomes $\frac{\log x_a}{\log x_g}$. It may, at first sight, be thought that a still simpler, and practically equivalent, measure will be $\frac{x_a}{x_g}$, but this simplification raises a question to which further reference will be made below.

The above hypothesis, however, is not satisfactory. Apart from the difficulty that only income in excess of that required for "bare subsistence" is taken into account, it is clear that too rapid a rate of increase of economic welfare is assumed, when income becomes large. After a certain point it is pretty obvious that more than proportionate additions to income will generally be required, in order to make equal additions to economic welfare. To be even tolerably realistic, a formula connecting income with economic welfare should satisfy the following conditions.

(1) Equal increases in economic welfare, at any rate after income is greater than a certain amount, should

¹ A discussion of the distinction, if any, between economic welfare and satisfaction lies outside the scope of this paper.

4 THE INEQUALITY OF INCOMES

correspond to more than proportionate increases in income; (2) economic welfare should tend to a finite limit, as income increases indefinitely; (3) economic welfare should be zero for a certain amount of income, and negative for smaller amounts. These conditions are satisfied if we assume that the relation of economic welfare to income is of the form $dw = \frac{dx}{x^2}$, so that $w = c - \frac{I}{x}$, where c is a constant. For then, however large x becomes, w can never become larger than c , and, when x is less than $\frac{I}{c}$, w is negative.¹ If we adopt this formula, which appears to be a good compromise of its kind between plausibility and simplicity, the corresponding measure of inequality is

$$\frac{nc - \frac{n}{x_a}}{nc - \frac{n}{x_h}} = \frac{c - \frac{I}{x_a}}{c - \frac{I}{x_h}}$$

where x_h is the harmonic mean of the individual incomes, and c , as already stated, the reciprocal of the minimum income, which yields positive economic welfare.

Both the measures of inequality obtained above are simple in form and have a certain theoretical elegance. But neither is readily applicable to statistics. The arithmetic mean is, indeed, easily calculated from perfect statistics, and fairly easily approximated to from imperfect statistics, but the corresponding calculations for the geometric and harmonic means are very laborious when the number of individual incomes is large, and the corresponding approximations, especially for the harmonic mean, are practically impossible where the statistics show more than a small degree of imperfection. The first of the two measures, moreover, involves an estimate of the income necessary for "bare subsistence," and the

¹ If it were practicable to fix a unit of economic welfare, it would have to be fixed, in relation to the unit of income, so that both these attributes of c would hold good. There is no theoretical objection to this

second an estimate of the minimum income which yields positive economic welfare. And neither of these estimates are easily made. Nor, of course, have we really any precise knowledge of the functional relation between income and economic welfare.

4. Failing such precise knowledge, we may still lay down certain general principles, which shall serve as tests, to which various plausible measures of inequality may be submitted. We have, first, what may be called the principle of transfers. Maintaining the assumptions laid down in Section 2 above, we may safely say that, if there are only two income-receivers, and a transfer of income takes place from the richer to the poorer, inequality is diminished.¹ There is, indeed, an obvious limiting condition. For the transfer must not be so large as more than to reverse the relative positions of the two income-receivers, and it will produce its maximum result, that is to say, create equality, when it is equal to half the difference between the two incomes. And we may safely go further and say that, however great the number of income-receivers and whatever the amount of their incomes, any transfer between any two of them, or, in general, any series of such transfers, subject to the above condition, will diminish inequality.² It is possible that in comparing two distributions, in which both the total income and the number of income-receivers are the same, we may see that one might be able to be evolved from the other by means of a series of transfers of this kind. In such a case we could say with certainty that the inequality of the one was less than that of the other.

5. Let us now apply the principle of transfers to various measures of dispersion used by statisticians for measuring inequality in general. A distinction may be drawn between measures of relative dispersion and measures of absolute dispersion. Measures of relative dispersion will

¹ Compare Pigou, *Wealth and Welfare*, p. 24.

² Inequality is certain to be diminished by a series of transfers such that all transfers from *A*, the richer, to *B*, the poorer, still leave *A* richer than, or just as rich as, *B*. But if some of the transfers make *B* richer than *A*, it is possible that the effects of the series of transfers might cancel out and leave the inequality the same as before.

6 THE INEQUALITY OF INCOMES

be simply numbers, while measures of absolute dispersion will be, in the present case, numbers of units of income. Most of the general measures of dispersion proposed by statisticians are measures of absolute dispersion, but are easily transformed into measures of relative dispersion when divided by an appropriate divisor.

Consider first the mean deviation from the arithmetic mean. This measure is the sum of two parts, one of which comprises the deviations above, the other the deviations below, the mean.¹ It is a bad measure, judged by the principle of transfers, for it is unaffected by transfers within either part, provided that no income previously above the mean is reduced below it, and conversely. The transfer of a given sum from incomes above the mean to incomes below it, as, for example, by the provision of old age pensions for persons of small incomes from the proceeds of a tax on large incomes, would obviously reduce the mean deviation. But it would be unaffected if such pensions were provided by a tax levied on those whose incomes were just below the mean, or if additional comforts for millionaires were provided from a tax on those whose incomes were just above the mean, provided that none of the latter were reduced below the mean by the tax.

The mean deviation is a measure of absolute dispersion. If we divide it by the arithmetic mean, we obtain what we may call the relative mean deviation, which is equally insensitive to transfers wholly above or wholly below the mean.

Consider next the standard, or mean square, deviation from the arithmetic mean, *i.e.*, the square root of the arithmetic average of the squares of deviations from the arithmetic mean. The standard deviation is perfectly sensitive to transfers,² and thus passes our first test with

¹ Thus, if S_1 is the sum of the deviations of income greater than the mean and S_2 the sum of the deviations of incomes less than the mean, the mean deviation = $\frac{1}{n}(S_1 + S_2)$, where n is the total number of incomes

² For, if δ be the initial standard deviation of any distribution of n incomes, and δ' the standard deviation after an amount h has been transferred from an income x_1 to an income x_2 , all other incomes remaining the same, we have $n^2(\delta'^2 - \delta^2) = 2h(x_1 - x_2) - 2h^2$. Therefore $\delta = \delta'$ only if $h = 0$ or if $h = x_1 - x_2$.

distinction. Dividing the standard deviation by the arithmetic mean, we obtain what may be called the relative standard deviation. This, too, is perfectly sensitive to transfers.

Consider next Professor Bowley's quartile measure of dispersion, $\frac{Q_3 - Q_1}{Q_3 + Q_1}$, where Q_1 and Q_3 are quartiles.¹ This

is a measure of relative dispersion. It is sensitive to transfers, in so far as these involve movements of the quartiles, but not otherwise. In this respect it is somewhat more sensitive than the mean deviation, but much less sensitive than the standard deviation.

An interesting measure of dispersion, which has not, I think, hitherto attracted the attention of English writers, is Professor Gini's mean difference, which, as applied to incomes, is the arithmetic average of the differences, taken positively, between all possible pairs of incomes.² It may be shown that this mean difference is equal to the weighted arithmetic mean of deviations from the median, the weights being proportionate to the number of incomes, increased by one, which are intermediate in size between the median and the income whose deviation is being considered.³ The mean difference, thus defined, is a measure of absolute dispersion. Dividing it by the arithmetic mean, we obtain a measure of relative dispersion, which may be called the relative mean difference. The mean difference, whether absolute or relative, is perfectly sensitive to transfers.

Another interesting measure of inequality is based upon what some writers have called a Lorenz curve.⁴ (See next page). This is a simple and convenient graphical method of exhibiting any distribution of income, provided that our interest is confined to proportions, rather than

¹ Compare Bowley, *Elements of Statistics*, p. 136

² See, for a discussion of this measure, Gini, *Variabilità e Mutabilità*.

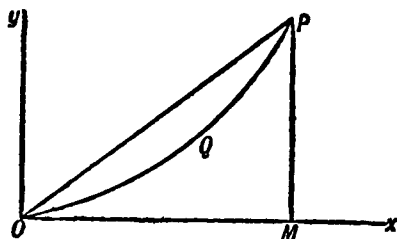
³ Gini, *ibid.*, pp. 32-3.

⁴ Originally proposed by Mr M O Lorenz, *Publications of the American Statistical Association* (1907), Vol IX, pp 209 ff. M Séailles also recommended it, apparently independently, in 1910 in his *Répartition des Fortunes en France*, pp. 56-7. Sir Leo Chiozza Money had already given hints of this measure in his *Riches and Poverty*, first published in 1905

8 THE INEQUALITY OF INCOMES

absolute amounts, both of total income and of the number of income-receivers.

Along the axis Ox are measured percentages of the total income, and along the axis Oy the minimum percentages of the total number of income-receivers, who receive various percentages of the total income. For example, if the richest 20 per cent. of the population received 75 per cent. of the total income, this fact would determine one point ($x=75$, $y=20$), upon the Lorenz curve. A perfectly equal distribution would be represented by the straight line OP inclined at an angle of 45° to either axis. An unequal distribution would be represented by a curve, such as OQP , lying below the line OP . If MP is perpendicular to OM , $OM=MP=100$, and an



obvious measure of inequality is the area enclosed between the Lorenz curve and the line of equal distribution OP . The larger this area, the larger the inequality.

A remarkable relation has been established between this measure of inequality and the relative mean difference, the former measure being always equal to half the latter.¹

Something will be said below concerning Professor Pareto's well-known measure of the inequality of incomes. But this measure cannot be tested, with reference to the principle of transfers, since it is based upon a supposed law, according to which, if the total income and the number of income-receivers are known, the distribution is uniquely determined.

¹ For a mathematical proof of this, see Ricci, *L'Indice di Variabilità*, pp. 22-4. The proof was first given, apparently, by Professor Gini. Another most elegant proposition, due to Professor Ricci (*ibid.*, pp. 32-3), is that, if any straight line be drawn parallel to the line of equal distribution, then all the Lorenz curves, to which this straight line is a tangent, represent distributions having the same relative mean deviation.

6. So far, then, as tested by the principle of transfers, the standard deviation, whether absolute or relative, and the mean difference, whether absolute or relative, are good measures; Professor Bowley's quartile measure is a very indifferent measure; the mean deviation, whether absolute or relative, is a bad measure; and Professor Pareto's measure evades judgment. But the scope of the principle of transfers, as a test of measures of inequality, is narrowly limited. It can only be applied to some cases—and by no means to all—in which both the total income and the number of income-receivers are constant, and distribution varies.¹ It cannot be applied when either the total income or the number of income-receivers varies, or when both vary simultaneously. For these more general cases further tests are required, and three general principles suggest themselves as serviceable for this purpose.

7. We have, first, what may be called the principle of proportionate additions to incomes. It is sometimes suggested that proportionate additions to, or subtractions from, all incomes will leave inequality unaffected.² But, if the definition of inequality given above be accepted, this is not so. It appears, rather, that proportionate additions to all incomes diminish inequality, and that proportionate subtractions increase it. This is the

¹ Professor Pigou (*Wealth and Welfare*, p. 25 n.) uses the following argument to prove that, in these circumstances, a reduction in the standard deviation will probably increase aggregate satisfaction. "If A be the mean income and a_1, a_2, \dots deviations from the mean, aggregate satisfaction, on our assumption,

$$=nf(A) + (a_1 + a_2 + \dots) f' + \frac{1}{2}(a_1^2 + a_2^2 + \dots) f'' + \frac{1}{6}(a_1^3 + a_2^3 + \dots) f''' + \dots$$

But we know that $a_1 + a_2 + \dots = 0$. We know nothing to suggest whether the sum of the terms beyond the third is positive or negative. If, therefore, the third and following terms are small relatively to the second term, it is certain, and, in general, it is probable that aggregate satisfaction is larger, the smaller is $(a_1^2 + a_2^2 + \dots)$. This latter sum, of course, varies in the same sense as the "standard deviation." This argument would be strong, if all deviations were small, *i. e.*, if inequality were already very small. But when, as is the case in all important modern communities, a number of the deviations is very large, it is quite likely that successive terms in the expansion will go on increasing (numerically) for some time, and this is especially likely as regards the series of alternate terms, which involve deviations raised to *even* powers. This likelihood will vary according to the form of the function f , but it seems clear that the third and following terms cannot, in general, be neglected. It follows that, in general, there is no certainty and only a somewhat low and problematical degree of probability, that a reduction in the standard deviation will increase satisfaction. There is no reason to suppose that it is not at least equally probable that a reduction in certain other measures of dispersion will have the same effect. One good test of the relative appropriateness of various measures of the inequality of incomes would be the relative probability that a reduction in such measures would increase economic welfare (or satisfaction), on the assumption that both the total income and the number of income-receivers were constants. But the evaluation of such relative probabilities presents difficulties.

² See, *e.g.*, Taussig, *Principles of Economics*, II, p. 485.

principle of proportionate additions to incomes just referred to. A general proof of this principle presents difficulties, and is not attempted here, but the proof in two important special cases is easy. For, first, assume, using the same notation as in Section 3 above, that the relation of income to economic welfare is $w = \log x$. Then, if δ be the inequality of any given distribution, we have

$$\delta = \frac{\log x_a}{\log x_g}$$

Let all incomes be multiplied by θ and let δ' be the inequality of the new distribution.

Then $\delta' = \frac{\log \theta + \log x_a}{\log \theta + \log x_g}$, and, since $x_a > x_g$, we have $\delta > \delta'$, if $\log \theta > 0$, that is to say, if $\theta > 1$.

Similarly, $\delta < \delta'$, if $\theta > 1$.

That is to say, proportionate additions to all incomes diminish inequality and proportionate subtractions increase it.¹ This is true, if x is the total income of any individual. *A fortiori*, it is true, if x is surplus income in excess of "bare subsistence." For equal proportionate additions to surplus income involve larger proportionate additions to total income, when the latter is large, than when it is small. A series of transfers from richer to poorer will, therefore, transform proportionate additions to surplus incomes into proportionate additions to total incomes.

Next assume that the relation of income to economic welfare is $w = c - \frac{1}{x}$. Then if δ be the inequality of any

given distribution, we have $\delta = \frac{c - \frac{1}{x_a}}{c - \frac{1}{x_b}}$

Let all incomes be multiplied by θ and let δ' be the inequality of the new distribution.

¹ If we write $\delta = x_a/x_g$, instead of $\delta = \log x_a/\log x_g$, proportionate additions or subtractions will leave inequality unaffected. It follows that x_a/x_g is not a mere simplification of the measure $\log x_a/\log x_g$ arrived at in section 3 above, but is a distinct, and inferior, measure.

Then $\delta' = \frac{c - \frac{I}{\theta x_a}}{c - \frac{I}{\theta x_b}}$, and we have, $\delta > \delta'$, if $(x_a - x_b)(\theta - 1) > 0$.

But $x_a > x_b$, $\therefore \delta > \delta'$, if $\theta > 1$.

Similarly, $\delta < \delta'$, if $\theta < 1$.

That is to say, proportionate additions to all incomes diminish inequality, and proportionate subtractions increase it.

8. If the principle of proportionate additions to incomes thus enunciated be provisionally accepted as true generally, and not merely for the particular hypotheses just examined, a second principle follows as a corollary.¹ This may be called the principle of equal additions to incomes, and is to the effect that equal additions to all incomes diminish inequality and equal subtractions increase it. Here, again, a direct general proof presents difficulties, though several writers have regarded the principle as so obvious that no proof is required.² But as a corollary of the preceding principle the proof is easy. For, let the total additional income involved in proportionate additions to all incomes be redistributed among income-receivers in such a way as to make equal, instead of proportionate, additions to all incomes. Then the addition to maximum economic welfare attainable is the same in both cases. But the addition to economic welfare actually attained is obviously greater when additions to incomes are equal than when they are proportionate. Therefore, inequality is smaller after equal additions have been made than after proportionate additions have been made, the total additional income being the same in both cases. But proportionate additions reduce inequality. Therefore, *a fortiori*, equal additions reduce inequality.³

¹ The additions must, of course, be genuine. Inequality in this country would not be diminished by reckoning everyone's income in shillings, instead of in pounds. Units of money income in any two cases to be compared must have approximately equal purchasing power.

² "An equal addition to everyone's income . . . obviously makes incomes more equal than they would otherwise be" Cannan, *Elementary Political Economy*, p. 137. See also Loria, *La Sintesi Economica*, p. 369.

³ Or alternatively, the total additional income being given, a distribution involving equal additions to all incomes may be evolved from a distribution involving proportionate additions to all incomes by means of a series of transfers from richer to poorer.

9. The third principle may be called the principle of proportionate additions to persons, and is to the effect that inequality is unaffected if proportionate additions are made to the number of persons receiving incomes of any given amount. This, again, is easily proved. For the maximum economic welfare attainable and the economic welfare actually attained will both have been increased in the same proportion, and hence their ratio will be unaltered.

10. We may now test, by means of these three principles, the measures of inequality which have already been tested by means of the principle of transfers. Simple mathematical operations yield the following results :—

Upon		Proportionate Additions to Incomes.	Effect of Equal Additions to Incomes.	Proportionate Additions to Persons
Absolute Mean Deviation	...	Increased	Unchanged	Unchanged
Relative Mean Deviation	...	Unchanged	Diminished	Unchanged
Absolute Standard Deviation		Increased	Unchanged	Unchanged
Relative Standard Deviation		Unchanged	Diminished	Unchanged
Bowley's Quartile Measure	...	Unchanged	Diminished	Unchanged
Absolute Mean Difference	...	Increased	Unchanged	Unchanged
Relative Mean Difference	...	Unchanged	Diminished	Unchanged

Here the three absolute measures of dispersion give one set of identical results, and the four relative measures another. None of the seven measures pass the test of proportionate additions to incomes, but the relative measures come nearer to doing so than the absolute measures.¹ The relative measures pass the test of equal additions to incomes, but the absolute measures do not. All seven measures pass the test of proportionate additions to persons. We may therefore eliminate the three absolute measures from further consideration. As between the four relative measures, the order of merit established by reference to the principle of transfers may stand, so far, unchanged, viz. :—

1. and 2. Relative standard deviation and relative mean difference (bracketed equal)
3. Bowley's quantity measure.
4. Relative mean deviation.

¹ It should be noticed that, if we are comparing the inequality of two distributions by means of a measure which is unchanged by proportionate additions to incomes, it is not

II. Can Professor Pareto's measure be brought into this order of merit? This is a relative measure, which is only applicable when distribution is approximately of the

form $A = \frac{y}{x^a}$, where x is any income, y the number of

incomes greater than x , and A and a constants for any given distribution, but variables for different distributions.¹ Assuming this formula for distribution, which, as Professor Bowley has shown,² is the same thing as assuming that the average of all incomes greater than x is proportional to x , Professor Pareto treats a as the measure of inequality, in the sense that, the greater a , the greater inequality. It follows mathematically that "neither an increase in the minimum income nor a diminution in the inequality of incomes can come about, except when the total income increases more rapidly than the population."³ In other words, increased production per head is both a necessary condition and a sufficient guarantee of a diminution of inequality.

Professor Pareto's law, about which much has been written both by way of criticism and of qualified appreciation, implies a uniformity in distribution, which makes it impossible to apply either the principle of transfers or the principle of equal additions to incomes. Like the four other measures just considered, it is unchanged both by proportionate additions to incomes and by proportionate additions to persons. It has been suggested⁴ that this measure, where it is applicable, will be in general accord with other plausible measures of dispersion. But, in view of the investigations of Italian economists,⁵

necessary that the unit of money income in the two distributions should have approximately the same purchasing power.

¹ Compare Pareto, *Cours d'Economie Politique*, II, pp. 305 ff., and *Manuel d'Economie Politique*, pp. 391 ff.

² *Measurement of Social Phenomena*, p. 106.

³ *Cours*, II, pp. 320-1.

⁴ See, e.g., Pigou, *Wealth and Welfare*, pp. 25 and 72.

⁵ See Bresciani, *Giornale degli Economisti*, August, 1905, pp. 117-8, and January, 1907, pp. 27-8, Ricci, *L'Indice di Variabilità*, pp. 43-6, Gini, *Variabilità*, p. 65 and pp. 70-1. Compare also Persons, *Quarterly Journal of Economics*, 1908-9, pp. 420-1, and Benini, *Principi di Statistica Metologica*, p. 187. Professor Benini inverts Professor Pareto's measure, but apparently without realising that he has done so.

this is very doubtful. It seems on the whole more likely, though the question requires further study, that, in order to bring it into general accord with other measures, the Pareto measure should be inverted, so that, the greater a , the smaller inequality. But such an inversion will explode Professor Pareto's alleged economic harmonies and it will follow, according to his law, that increased production per head will always mean increased inequality!

According to Professor Gini,¹ many actual distributions of income approximate to the formula

$$n = \frac{I}{c} s^\delta, \text{ or } \log n = \delta \log s - \log c,$$

where s is the total income of the n richest income-receivers and δ and c are constants for any given distribution. He proposes δ as a measure of inequality, or "index of concentration," as he prefers to call it, such that, the greater δ , the greater inequality. This formula is a more convenient variant of Professor Pareto's, such

that $\delta = \frac{a}{a-1}$, and, as a diminishes from any quantity greater than one down to one, δ increases up to infinity.

The equation $\log n = \delta \log s - \log c$ is easily transformed into that of a Lorenz curve. For, if N is the total number of income-receivers and S the total income, we have

$$\log N = \delta \log S - \log c,$$

$$\therefore \log \frac{n}{N} = \delta \log \frac{s}{S}.$$

Putting $\frac{n}{N} = \frac{y}{100}$ and $\frac{s}{S} = \frac{x}{100}$, we have the equation of

a Lorenz curve, $\log \frac{y}{100} = \delta \log \frac{x}{100},$

$$\text{or } \frac{y}{100} = \left(\frac{x}{100} \right)^\delta.$$

The area enclosed between this Lorenz curve and the line of equal distribution is

¹ *Ibid.*, pp. 72 ff.

$$\begin{aligned}
 & \int_{x=0}^{x=100} y dx \\
 &= \frac{1}{2}(100)^2 - \int_0^{100} \frac{x^{\delta}}{(100)^{\delta}} dx \\
 &= (100)^2 \left(\frac{1}{2} - \frac{1}{\delta+1} \right).
 \end{aligned}$$

Thus, the greater δ , the larger is the above area, and the larger the relative mean difference.¹ There is thus some ground for believing, though I do not here definitely commit myself to the belief, that *the reciprocal* of Professor Pareto's measure is a mere variant of the relative mean difference, in the particular case when distribution is approximately according to Pareto's law. In this particular case, then, Professor Pareto's measure would have no independent significance, and, in the more general case, when distribution may depart widely from Pareto's law, the measure has, of course, no general significance at all. It will, therefore, be provisionally set aside in this discussion.

12. Returning to the four measures set out in order of merit at the end of Section 10, this order is based on theoretical advantages. But account must also be taken of practical applicability to statistics. Both the relative mean deviation and the quartile measure are more easily applicable than either of their two rivals to perfect statistics, and applicable, with less risk of serious error, to imperfect statistics. As regards perfect, or nearly perfect, statistics, the advantage of the former pair over the latter relates only to laboriousness and not to accuracy, and is not, therefore, a matter of great importance. But, as regards markedly imperfect statistics, such as are actually

¹ This index δ has been used by several Italian writers in enquiries into distributions of income. See, e.g., Savorgnan, *La Distribuzione dei Redditi nelle Provincie e nelle Grandi Città dell' Austria*, and Porru, *La Concentrazione della Ricchezza nelle Diverse Regioni d'Italia*.

available, the advantage relates to accuracy as well as to laboriousness and is, therefore, vital.

The provisional conclusion which suggests itself, is as follows. When statistics are so imperfect that neither the relative standard deviation nor the relative mean difference can be applied with any expectation of reasonable accuracy, we must make shift with the relative mean deviation and the quartile measure. It is some palliation of the comparative insensitiveness to transfers which is a defect of both the latter measures, that each is sensitive to many possible transfers, to which the other is insensitive. If, therefore, both give the same result in any particular comparison, their evidence is to some extent corroborative.

If statistics are so far improved that the relative standard deviation and the relative mean difference are applicable, these are to be preferred to the two measures just mentioned. If a single measure is to be used, the relative mean difference is, perhaps, slightly preferable, owing to the graphical convenience of the Lorenz curve. Probably, however, it will be desirable, at any rate for some time to come, not to rely upon the evidence of a single measure, but upon the corroboration of several. Given perfect, or nearly perfect, statistics, it is worth while considering whether corroboration may not also be sought from the measure $\frac{\log x_s}{\log x_g}$, applied, for the sake of simplicity, to total incomes, and not to surplus incomes in excess of the requirements of "bare subsistence." For this measure passes our test of proportionate additions to incomes, which none of the other four survivors do. In most practical cases, no doubt, these five measures will give results pointing in the same direction, but in some cases they may not do so.

Meanwhile, the chief practical necessity is the improvement of existing statistical information, especially as regards the smaller incomes. This paper may be compared to an essay in a few of the principles of brickmaking. But, until a greater abundance of straw is forthcoming, these principles cannot be put to the test of practice.

LIST OF STUDIES IN ECONOMICS AND POLITICAL SCIENCE.

*A Series of Monographs by Lecturers and Students connected with the
London School of Economics and Political Science.*

EDITED BY THE

DIRECTOR OF THE LONDON SCHOOL OF ECONOMICS AND
POLITICAL SCIENCE.

1. The History of Local Rates in England. The substance of five lectures given at the School in November and December, 1895. By EDWIN CANNAN, M.A., LL.D. 1896; second enlarged edition, 1912; xv. and 215 pp., Crown 8vo, cloth. 4s. net.

P. S. King & Son.

2. Select Documents Illustrating the History of Trade Unionism. I.—THE TAILORING TRADE. By F. W. GALTON. With a Preface by SIDNEY WEBB, LL.B. 1896; 242 pp., Crown 8vo, cloth. 5s.

P. S. King & Son.

3. German Social Democracy. Six lectures delivered at the School in February and March, 1896. By the HON. BERTRAND RUSSELL, B.A., late Fellow of Trinity College, Cambridge. With an Appendix on Social Democracy and the Woman Question in Germany. By ALYS RUSSELL, B.A. 1896; 204 pp., Crown 8vo, cloth. 3s. 6d.

P. S. King & Son.

4. The Referendum in Switzerland. By M. SIMON DEPLOIGE, University of Louvain. With a Letter on the Referendum in Belgium by M. J. VAN DEN HEUVEL, Professor of International Law in the University of Louvain. Translated by C. P. TREVELYAN, M.A., Trinity College, Cambridge, and edited with Notes, Introduction, Bibliography, and Appendices by LILIAN TOMN (Mrs. Knowles), of Girton College, Cambridge, Research Student at the School. 1898; x. and 334 pp., Cr. 8vo, cloth. 7s. 6d.

P. S. King & Son.

5. The Economic Policy of Colbert. By A. J. SARGENT, M.A., Senior Hulme Exhibitioner, Brasenose College, Oxford; and Whately Prizeman, 1897, Trinity College Dublin. 1899; viii. and 138 pp., Crown 8vo, cloth. 2s. 6d.

P. S. King & Son.

6. Local Variations in Wages (The Adam Smith Prize, Cambridge University, 1898). By F. W. LAWRENCE, M.A., Fellow of Trinity College, Cambridge. 1899; viii. and 90 pp., with Index and 18 Maps and Diagrams. Quarto, 11 in. by 8½ in., cloth. 8s. 6d.

Longmans, Green & Co.

7. The Receipt Roll of the Exchequer for Michaelmas Term of the Thirty-first Year of Henry II. (1185). A unique fragment transcribed and edited by the Class in Palæography and Diplomatic, under the supervision of the Lecturer, HUBERT HALL F.S.A., of H.M. Public Record Office. With thirty-one Facsimile Plates in Collotype and Parallel readings from the contemporary Pipe Roll. 1899; vii. and 37 pp., Folio, 15½ in. by 11½ in., in green cloth; 2 Copies left. Apply to the Director of the London School of Economics.

LIST OF STUDIES.

8. **Elements of Statistics.** By ARTHUR L. BOWLEY, M.A., Sc.D., F.S.S., Cobden and Adam Smith Prizeman, Cambridge; Guy Silver Medalist of the Royal Statistical Society; Newmarch Lecturer, 1897—8. 500 pp. and 40 Diagrams, Demy 8vo, cloth. 1901; Third edition, 1907; viii. and 336 pp. 12s. net.

P. S. King & Son.

9. **The Place of Compensation in Temperance Reform.** By C. P. SANGER, M.A., late Fellow of Trinity College, Cambridge, Barrister-at-Law. 1901, viii. and 136 pp., Crown 8vo, cloth. 2s. 6d. net.

P. S. King & Son.

10. **A History of Factory Legislation.** By B. L. HUTCHINS and A. HARRISON (Mrs. Spencer), B.A., D.Sc. (Econ), London With a Preface by SIDNEY WEBB, LL.B. 1903; new and revised edition, 1911; xvi. and 298 pp., Demy 8vo, cloth. 7s. 6d. net.

P. S. King & Son.

11. **The Pipe Roll of the Exchequer of the See of Winchester for the Fourth Year of the Episcopate of Peter des Roches (1207).** Transcribed and edited from the original Roll in the possession of the Ecclesiastical Commissioners by the Class in Palæography and Diplomatic, under the supervision of the Lecturer, HUBERT HALL, F.S.A., of H.M. Public Record Office. With a Frontispiece giving a Facsimile of the Roll. 1903; xlviii. and 100 pp., Folio, 13½ in. by 8½ in., green cloth 15s. net.

P. S. King & Son.

12. **Self-Government in Canada and How It was Achieved: The Story of Lord Durham's Report.** By F. BRADSHAW, B.A., D.Sc. (Econ), London; Senior Hulme Exhibitioner, Brasenose College, Oxford. 1903; 414 pp., Demy 8vo, cloth 7s. 6d. net.

P. S. King & Son.

13. **History of the Commercial and Financial Relations Between England and Ireland from the Period of the Restoration.** By ALICE EFFIE MURRAY (Mrs. Radice), D.Sc. (Econ), London, former Student at Girton College, Cambridge; Research Student of the London School of Economics and Political Science 1903; 486 pp., Demy 8vo, cloth. 7s. 6d. net.

P. S. King & Son

14. **The English Peasantry and the Enclosure of Common Fields.** By GILBERT SLATER, M.A., St. John's College, Cambridge; D.Sc. (Econ), London 1906, 337 pp., Demy 8vo, cloth. 10s. 6d. net.

Constable & Co.

15. **A History of the English Agricultural Labourer.** By Dr. W. HASBACH, Professor of Economics in the University of Kiel. Translated from the Second Edition (1908), by Ruth Kenyon. Introduction by SIDNEY WEBB, LL.B. 1908; xvi. and 470 pp., Demy 8vo, cloth. 7s. 6d. net.

P. S. King & Son.

16. **A Colonial Autocracy: New South Wales under Governor Macquarie, 1810-21.** By MARION PHILLIPS, B.A., Melbourne; D.Sc. (Econ.), London 1909; xxxii. and 336 pp., Demy 8vo, cloth 10s. 6d. net.

P. S. King & Son.

LIST OF STUDIES.

17. *India and the Tariff Problem.* By H. B. LEE SMITH, M.A., M.P. 1909; 120 pp., Crown 8vo, cloth. 3s. 6d. net.

Constable & Co.

18. *Practical Notes on the Management of Elections.* Three Lectures delivered at the School in November, 1909, by ELLIS T. POWELL, LL.B., D.Sc. (Econ.), London, Fellow of the Royal Historical and Royal Economic Societies, of the Inner Temple, Barrister-at-Law. 1909; 52 pp., 8vo, paper. 1s. 6d. net.

P. S. King & Son.

19. *The Political Development of Japan.* By G. E. UYEHARA, B.A., Washington, D.Sc. (Econ.), London. xxiv, and 296 pp., Demy 8vo, cloth. 1910. 8s. 6d. net.

Constable & Co.

20. *National and Local Finances.* By J. WATSON GRICE, D.Sc. (Econ.), London. Preface by SIDNEY WEBB, LL.B. 1910; 428 pp., Demy 8vo, cloth. 12s. net.

P. S. King & Son.

21. *An Example of Communal Currency.* Facts about the Guernsey Market-house. By J. THEODORE HARRIS, B.A., with an Introduction by SIDNEY WEBB, LL.B. 1911; xiv, and 62 pp., Crown 8vo, cloth. 1s. 6d. net; paper, 1s. net.

P. S. King & Son.

22. *Municipal Origins. History of Private Bill Legislation.* By F. H. SPENCER, LL.B., D.Sc. (Econ.), London; with a Preface by Sir EDWARD CLARKE, K.C. 1911; xi, and 333 pp., Demy 8vo, cloth. 10s. 6d. net.

Constable & Co.

23. *Seasonal Trades.* By VARIOUS AUTHORS. With an Introduction by SIDNEY WEBB. Edited by SIDNEY WEBB, LL.B., and ARNOLD FREEMAN, M.A. 1912; xi, and 410 pp., Demy 8vo, cloth. 7s. 6d. net.

Constable & Co.

24. *Grants in Aid. A Criticism and a Proposal.* By SIDNEY WEBB, LL.B. 1911; vii, and 135 pp., Demy 8vo, cloth. 5s. net.

Longmans, Green & Co.

25. *The Panama Canal: A Study in International Law.* By H. ARIAS, B.A., LL.D. 1911; xiv, and 188 pp., 2 maps, bibliography, Demy 8vo, cloth. 10s. 6d. net.

P. S. King & Son.

26. *Combination Among Railway Companies.* By W. A. ROBERTSON, B.A. 1912; 105 pp., Demy 8vo, cloth. 1s. 6d. net; paper, 1s. net.

Constable & Co.

27. *War and the Private Citizen: Studies in International Law.* By A. PRARCE HIGGINS, M.A., LL.D.; with Introductory Note by the Rt. Hon. Arthur Cohen, K.C. 1912; xvi, and 200 pp., Demy 8vo, cloth. 5s. net.

P. S. King & Son.

28. *Life in an English Village: An Economic and Historical Survey of the Parish of Corsley, in Wiltshire.* By M. F. DAVIES. 1909; xiii, and 319 pp., illustrations, bibliography, Demy 8vo, cloth. 10s. 6d. net.

T. Fisher Unwin.

LIST OF STUDIES.

29. **English Apprenticeship and Child Labour : A History.** By O JOCELYN DUNLOP, D Sc (Econ), London ; with a Supplementary Section on the Modern Problem of Juvenile Labour, by the Author and R D DENMAN, M P 1912 ; 390 pp., bibliography, Demy 8vo, cloth 10s 6d net. *T. Fisher Unwin.*

30. **Origin of Property and the Formation of the Village Community.** By J ST. LEWINSKI, D.Ec Sc., Brussels 1913 ; xi and 71 pp., Demy 8vo, cloth. 3s. 6d net. *Constable & Co.*

31. **The Tendency towards Industrial Combination (in some Spheres of British Industry).** By G. R. CARTER, M A 1913 ; xxiii. and 391 pp., Demy 8vo, cloth. 6s. net. *Constable & Co.*

32. **Tariffs at Work : An Outline of Practical Tariff Administration** By JOHN HEDLEY HIGGINSON, B.Sc (Econ), London, Mitchell-Student of the University of London ; Cobden Prizeman and Silver Medallist. 1913, 150 pp., Crown 8vo, cloth. 2s 6d net
P. S. King & Son

33. **English Taxation, 1640-1799.** An Essay on Policy and Opinion. By WILLIAM KENNEDY, M.A., D Sc (Econ), London ; Shaw Research Student of the London School of Economics and Political Science. 1913 ; 200 pp., Demy 8vo. 7s. 6d net.
G. Bell & Sons.

34. **Emigration from the United Kingdom to North America, 1763-1912.** By STANLEY C. JOHNSON, M A, Cambridge, D Sc (Econ), London 1913 ; xvi and 387 pp., Demy 8vo, cloth. 6s net
G. Routledge & Sons.

35. **The Financing of the Hundred Years' War, 1337-60.** By SCHUYLER B. TERRY. 1913, xvi. and 199 pp., Demy 8vo, cloth. 6s. net
Constable & Co.

36. **Kinship and Social Organization.** By W. H. R. RIVERS, M D., F.R S., Fellow of St John's College, Cambridge. 1914, 96 pp., Demy 8vo, cloth 2s 6d. net. *Constable & Co.*

37. **The Nature and First Principle of Taxation.** By ROBERT JONES, D Sc (Econ), London, with a Preface by SIDNEY WEBB, LL. B. 1914, xvii and 299 pp., Demy 8vo. cloth. 7s 6d. net.
P. S. King & Son.

38. **The Export of Capital.** By C. K HOBSON, M A, D Sc. (Econ), London, F S S, Shaw Research Student of the London School of Economics and Political Science. 1914 ; xxv. and 264 pp., Demy 8vo, cloth 7s 6d net. *Constable & Co.*

39. **Industrial Training.** By NORMAN BURRELL DEARLE, M.A., D Sc. (Econ), London, Fellow of All Souls College, Oxford ; Shaw Research Student of the London School of Economics and Political Science 1914, 610 pp., Demy 8vo, cloth. 10s 6d net.
P. S. King & Son.

LIST OF STUDIES.

40. **Theory of Rates and Fares.** From the French of Charles Colson's "Transports et tarifs" (3rd edn., 1907), by L. R. CHRISTIE, G. LEEHDAM and C. TRAVIS. Edited and arranged by CHARLES TRAVIS, with an Introduction by W. M. ACWORTH, M.A., 1914; viii. and 195 pp., Demy 8vo, cloth. 3s. 6d. net. *G. Bell & Sons, Ltd.*

41. **Advertising : A Study of a Modern Business Power.** By G. W. GOODALL, B.Sc. (Econ.), London; with an Introduction by SIDNEY WEBB, LL.B., 1914; xviii. and 91 pp., Demy 8vo, cloth. 2s. 6d. net; paper, 1s. 6d. net. *Constable & Co.*

42. **English Railways : Their Development and their Relation to the State.** By EDWARD CARNEGIE CLEVELAND-STEVENS, M.A., Christ Church, Oxford; D.Sc. (Econ.), London; Shaw Research Student of the London School of Economics and Political Science. 1915; xvi. and 325 pp., Demy 8vo, cloth. 6s. net. *G. Routledge & Sons.*

43. **The Lands of the Scottish Kings in England.** By MARGARET F. MOORE, M.A.; with an Introduction by P. HUME BROWN, M.A., LL.D., D.D., Professor of Ancient Scottish History and Palaeography, University of Edinburgh. 1915; xii. and 141 pp., Demy 8vo, cloth. 5s. net. *George Allen & Unwin.*

44. **The Colonization of Australia, 1829-42 : The Wakefield Experiment in Empire Building.** By RICHARD C. MILLS, LL.M., Melbourne; D.Sc. (Econ.), London; with an Introduction by GRAHAM WALLAS, M.A., Professor of Political Science in the University of London. 1915; xx., 363 pp., Demy 8vo, cloth. 10s. 6d. net. *Sidgwick & Jackson.*

45. **The Philosophy of Nietzsche.** By A. WOLF, M.A., D.Lit., Fellow of University College, London; Reader in Logic and Ethics in the University of London. 1915; 114 pp., Demy 8vo, cloth. 3s. 6d. net. *Constable & Co.*

46. **English Public Health Administration.** By B. G. BANNINGTON; with a Preface by GRAHAM WALLAS, M.A., Professor of Political Science in the University of London. 1915; xiv., 338 pp., Demy 8vo, cloth. 8s. 6d. net. *P. S. King & Son.*

47. **British Incomes and Property : The Application of Official Statistics to Economic Problems.** By J. C. STAMP D.Sc. (Econ.), London. 1916; xvi., 538 pp., Demy 8vo, cloth. 12s. 6d. net. *P. S. King & Son.*

48. **Village Government in British India.** By JOHN MATTHAI, D.Sc. (Econ.), London; with a Preface by SIDNEY WEBB, LL.B., Professor of Public Administration in the University of London. 1915; xix., 211 pp., Demy 8vo, cloth. 4s. 6d. net. *T. Fisher Unwin.*

49. **Welfare Work : Employers' Experiments for Improving Working Conditions in Factories.** By E. D. PROUD (Mrs. Gordon Pavy), B.A., Adelaide; D.Sc. (Econ.), London; with a Foreword by the Rt. Hon. D. Lloyd George, M.P., Prime Minister. 1916; 3rd edn., 1918; xx., 368 pp., Demy 8vo, cloth. 8s. 6d. net. *George Bell & Sons.*

LIST OF STUDIES.

50. The Development of Rates of Postage. By A. D. SMITH, D.Sc. (Econ.), London, F.S.S., of the Secretary's Office, General Post Office; with an Introduction by the Rt Hon. HERBERT SAMUEL, M.P., Postmaster-General, 1910-4 and 1915-6. 1917, xii, 431 pp. Demy 8vo, cloth. 16s. net. *George Allen & Unwin.*

51. Metaphysical Theory of the State. By L. T. HOBHOUSE, M.A., Martin White Professor of Sociology in the University of London. 1918; 156 pp., Demy 8vo, cloth 7s. 6d. net. *George Allen & Unwin*

52. Outlines of Social Philosophy. By J. S. MACKENZIE, M.A., Professor of Logic and Philosophy in the University College of South Wales. 1918; 280 pp., Demy 8vo, cloth 10s 6d net *George Allen & Un. in*

53. Economic Phenomena Before and After War. By SLAVKO SEČEROV, Ph.D., M.Sc. (Econ), London, F.S.S. 1919, viii, 226 pp., Demy 8vo, cloth 10s. 6d. net. *G. Routledge & Sons*

54. Gold, Prices, and the Witwatersrand. By R. A. LEHFELDT, D.Sc., Professor of Economics at the South African School of Mines and Technology, Johannesburg (University of South Africa), Correspondent for South Africa of the Royal Economic Society. 1919; 130 pp., Crown 8vo, cloth. 5s. net. *P. S King & Son.*

55. Exercises in Logic. By A. WOLF, M.A., D.Lit., Fellow of University College, London; Reader in Logic and Ethics in the University of London. 1919; 78 pp., Crown 8vo, paper. 3s net *George Allen & Unwin.*

56. Working Life of Women in the 17th Century. By ALICE CLARK, Shaw Research Student of the London School of Economics and Political Science 1919; (7), 335 pp., Demy 8vo, cloth. 10s 6d. net. *G. Routledge & Sons*

57. Animal Foodstuffs: With Special Reference to the British Empire and the Food Supply of the United Kingdom. By E. W. SHANAHAN, M.A., New Zealand; D.Sc. (Econ), London. 1920; viii., 331 pp., Demy 8vo, cloth. 10s 6d. net. *G. Routledge & Sons.*

58. Commercial Advertising. A course of lectures given at the School. By THOMAS RUSSELL, President of the Incorporated Society of Advertisement Consultants; sometime Advertisement Manager of the *Times*. 1919; x, 306 pp., Demy 8vo, cloth 10s 6d. net. *G. P. Putnam's Sons.*

59. Some Aspects of The Inequality of Incomes in Modern Communities. By HUGH DALTON, M.A., King's College, Cambridge; Barrister-at-Law of the Middle Temple; Hutchinson Research Student of the London School of Economics and Political Science. *G. Routledge & Sons.*

60. History of Social Development. From the German of F. Muller-Lyer's "Phasen der Kultur," 1908, by E. C. and H. A. LAKE. (In the Press) *George Allen & Unwin.*

LIST OF STUDIES.

Monographs on Sociology.

3. **The Material Culture and Social Institutions of the Simpler Peoples.** By L. T. HOBHOUSE, M.A., Martin White Professor of Sociology in the University of London, G. C. WHEELER, B.A., and M. GINSBERG, B.A. 1915; 300 pp., Demy 8vo, paper. 2s 6d. net.
Chapman & Hall.

4. **Village and Town Life in China.** By TAO LI KUNG, B.Sc. (Econ.), London, and LEONG YEW KOH, LL.B., B.Sc. (Econ.), London. Edited by L. T. HOBHOUSE, M.A. 1915; 153 pp., Demy 8vo, cloth. 5s. net.
George Allen & Unwin.

Series of Bibliographies by Students of the School.

1. **A Bibliography of Unemployment and the Unemployed.** By F. ISABEL TAYLOR, B.Sc. (Econ.), London. Preface by SIDNEY WEBB, LL.B. 1909; xix. and 71 pp., Demy 8vo, cloth, 2s. net; paper, 1s. 6d. net.
P. S. King & Son.

2. **Two Select Bibliographies of Mediæval Historical Study.** By MARGARET F. MOORE, M.A., with Preface and Appendix by HUBERT HALL, F.S.A. 1912, 185 pp., Demy 8vo, cloth. 5s. net.
Constable & Co.

3. **Bibliography of Roadmaking and Roads in the United Kingdom.** By DOROTHY BALEN, B.Sc. (Econ.), London an enlarged and revised edition of a similar work compiled by Mr. and Mrs. Sidney Webb in 1906. 1914; xviii. and 281 pp., Demy 8vo, cloth. 15s. net.
P. S. King & Son.

4. **A Select Bibliography for the Study, Sources, and Literature of English Mediæval Economic History.** Edited by HUBERT HALL, F.S.A. 1914; xiii. and 350 pp., Demy 8vo, cloth. 5s. net.
P. S. King & Son.

Series of Geographical Studies.

1. **The Reigate Sheet of the One-Inch Ordnance Survey. A Study in the Geography of the Surrey Hills.** By ELLEN SMITH. Introduction by H. J. MACKINDER, M.A., M.P. 1910; xix. and 110 pp., 6 maps, 23 illustrations. Crown 8vo, cloth. 5s. net.
A. & C. Black.

2. **The Highlands of South-West Surrey. A Geographical Study in Sand and Clay.** By E. C. MATTHEWS. 1911; viii. and 124 pp., 7 maps, 8 illustrations, 8vo, cloth. 5s. net.
A. & C. Black.

Series of Contour Maps of Critical Areas.

1. **The Hudson-Mohawk Gap.** Prepared by the Diagram Company from a map by B. B. Dickinson. 1913; 1 sheet 18 in by 22½ in. Scale 20 miles to 1 inch. 6d. net; post free, folded 7d., rolled 9d.
Sifton, Prasad & Co.