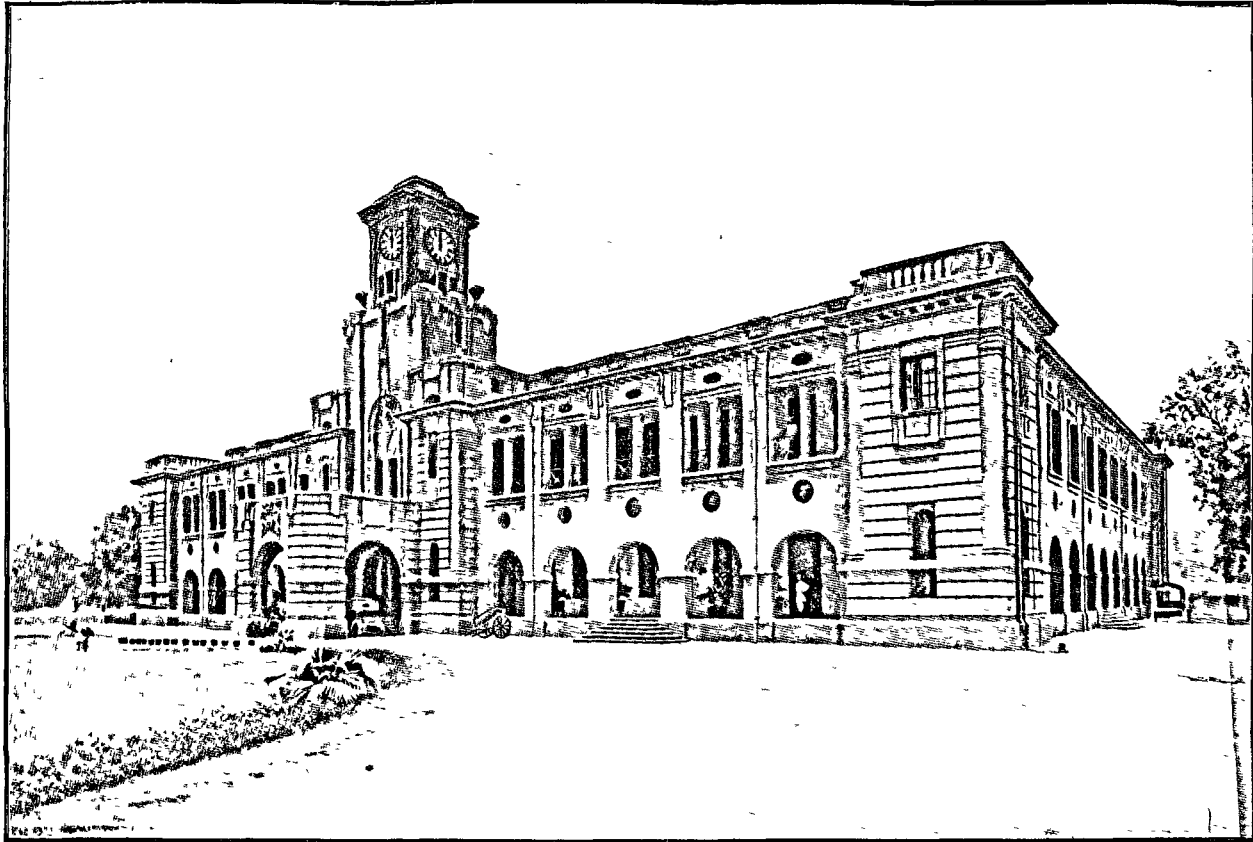
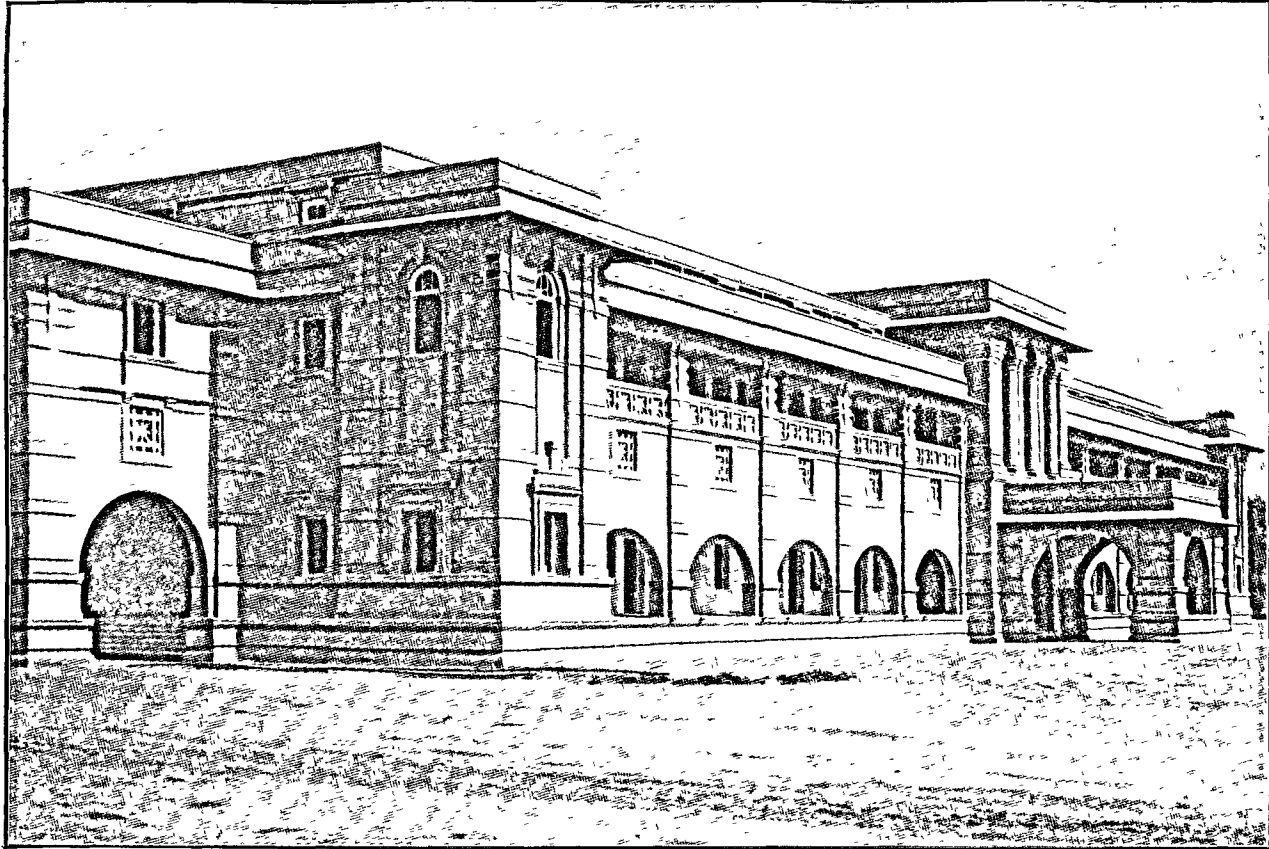


POST AND TELEGRAPH  
ANNUAL REPORT 1923-24.

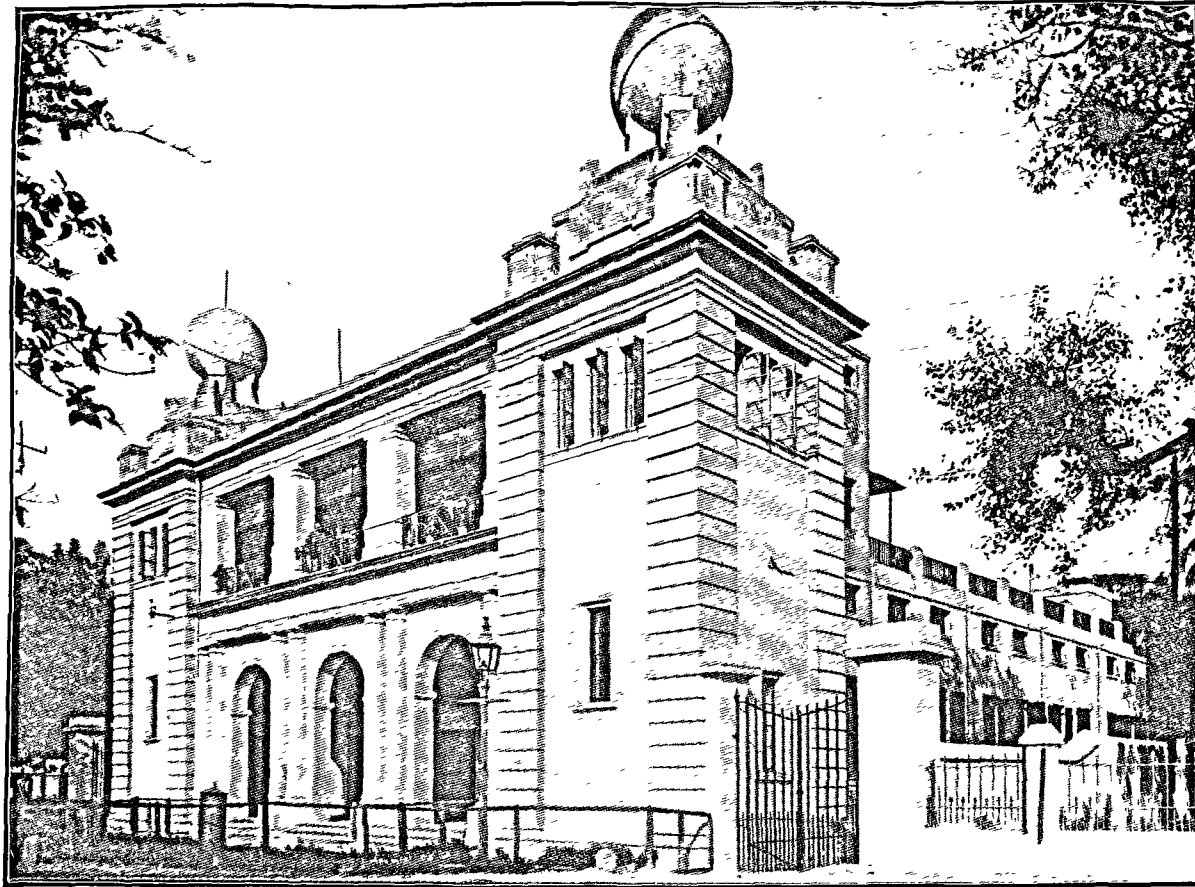


POSTMASTER-GENERAL'S OFFICE, LUCKNOW.

Dhananjayrao Gadgil Library  
GIPE-PUNE-024143  
69



POST AND TELEGRAPH OFFICE, PATNA.



POST AND TELEGRAPH OFFICE, ALIPORE, CALCUTTA.

# TABLE OF CONTENTS.

## Introductory.

	PAGE.
Preamble . . . . .	1
Charge ... . . . .	1

## POSTS—General.

General Survey . . . . .	1
Magnitude of business . . . . .	1
Retrenchment . . . . .	2
Transfer of Control of the Post and Telegraph Department and appointment of a Financial Adviser . . . . .	2
The British Empire Exhibition . . . . .	2
Use of Franking Machines . . . . .	2
Advertisement in Post and Telegraph Buildings . . . . .	3
Principal Events . . . . .	3
Raids on post offices . . . . .	4
Riot in Agra . . . . .	5
Cyclones and floods . . . . .	5
Breaches and accidents . . . . .	6
Epidemics . . . . .	6
Increase of pay . . . . .	6
Working of the P. & O. Contract . . . . .	6
Algarh Press and Workshop . . . . .	6

## Post Offices and Postal Communications.

Post offices and letter-boxes . . . . .	7
Postal communications . . . . .	7

## Postal Articles and Postage Stamps.

Statistics of postal articles . . . . .	8
Parcel traffic . . . . .	9
Delivery work . . . . .	9
Work of Dead Letter Offices . . . . .	9
Foreign correspondence . . . . .	9
Foreign parcels . . . . .	10
Exchange of value-payable parcels with Great Britain and Ireland . . . . .	11
Postage stamps . . . . .	11

## Insured and Value Payable Post.

Insurance business . . . . .	12
Claims for compensation . . . . .	13
Value payable business . . . . .	13
Value payable business with Ceylon . . . . .	13

**Money Orders.**

	<b>PAGE.</b>
Money order business—General .. ...	13
Inland money orders .. ...	14
Telegraphic money orders .. ...	14
Foreign money orders .. ...	14
British Postal Orders .. ...	15

**Savings Bank.**

General results .. ..	15
Transactions in Government securities .. ..	15
Financial results .. ..	16

**Field Service.**

Field Post Office work .. ..	16
------------------------------	----

**Miscellaneous.**

Post Office Guarantee Fund .. ..	16
Complaints by the public .. ..	17
Compensation for uninsured registered articles .. ..	17
Offences by postal officials .. ..	17
Offences by other persons .. ..	17
Highway robberies of mails .. ..	17
Other casualties .. ..	18
Post Office staff .. ..	18
Postal Co-operative movement .. ..	18
Buildings .. ..	19

**Non-Postal Branches.**

Post Office Insurance Fund .. ..	19
Receipt of salt revenue .. ..	20
Sale of quinine .. ..	20
Payment of Indian military pensions .. ..	20
Post Office Cash Certificates .. ..	20

**Financial Result of the Post Office.**

Review .. ..	20
--------------	----

**TELEGRAPHS—Engineering.**

Staff .. ..	21
General Review .. ..	21
Line construction and reconstruction .. ..	21
Maintenance Repairs .. ..	22
Theft of wire and breakage of insulators .. ..	22
Interruptions to inland communications .. ..	22
Telegraphic communication with foreign countries .. ..	23
High-speed Telegraph system .. ..	23
Field Telegraph Work .. ..	24
Issue of Stores .. ..	25

**Telephones and Private Lines.**

	<b>PAGE.</b>
Early History .. ...	25
Licensed systems . . . . .	26
Royalty .. ...	26
Telephone exchanges operated by the Department .. ..	27
New systems .. ..	27
Improvement of existing systems .. ..	27
Replacement of aerial lines by underground cables .. ..	27
New Delhi .. ..	28
Trunk Lines .. ..	28
Summary .. ..	28
Telephone Revenue Account .. ..	29
Experimental Research—Telephone Repeaters .. ..	30
Composite Working .. ..	31
Telegraph Working with valve .. ..	31
Training .. ..	31

**Telegraph Stores and Workshops.**

Telegraph Stores .. ..	31
Telegraph Workshops .. ..	32

**TRAFFIC—General.**

Staff .. ..	33
Station Service .. ..	33
General Survey .. ..	33
Opening of Departmental telegraph offices .. ..	34
Conversion of Departmental telegraph offices into Combined Post and Telegraph offices .. ..	34
Retrenchment .. ..	34
Advertisements on Telegram forms and delivery envelopes .. ..	34
Increase in the fees for the registration of abbreviated addresses .. ..	35
Training fee for Canal Probationers .. ..	35
Improvements in pay and prospects .. ..	35
Grant of the sliding scale of Burma allowance .. ..	35
National Cash Register Machines .. ..	35
Pressure boards in public counters .. ..	36
Clear-the-Line and Priority telegrams from Ruling Princes .. ..	36
Cyclones .. ..	36
Training in Telegraphy in Schools and Colleges .. ..	36
Assistance rendered to other Departments and Administrations .. ..	37
Appreciation of the services rendered by the staff in Waziristan .. ..	37
Transfers from Local to General Service .. ..	38
Overtime allowance .. ..	38
Combined Post and Telegraph offices .. ..	39
Postal receiving offices .. ..	39
Number of newspapers registered under the Press message rules .. ..	39
Certificates in telegraphy .. ..	39
Co-operative Credit Societies .. ..	39

**Inland Telegrams.**

	<b>PAGE.</b>
Number and value of telegrams ... . . . .	39
O. H. M. S. telegram forms . . . . .	40
System of transfer of messages by messengers instead of by wire . . . . .	40
Delivery of telegrams by Air-Service . . . . .	40

**Foreign Telegrams.**

Number and value of telegrams . . . . .	41
Introduction of Daily Letter-Telegram Service with Great Britain . . . . .	41
Foreign telegraphic Money Order Advices . . . . .	41
Communication with Afghanistan . . . . .	42

**Wireless Telegraphy.**

Retrenchment . . . . .	42
Wireless Divisions . . . . .	42
Construction . . . . .	42
Maintenance . . . . .	44
Experimental work . . . . .	44
Training . . . . .	44
Workshop . . . . .	45
Store Agency . . . . .	45
Personnel . . . . .	45

**Traffic.**

Radio telegrams and foreign Radio Communications . . . . .	46
Special Wireless messages for the Press . . . . .	46
Wireless stations under "Care and Maintenance Party" . . . . .	47
Wireless Communication in connection with the sinking of S. S. "Okara" . . . . .	47

**Miscellaneous.**

Legislation . . . . .	47
Stations erected in Mysore State . . . . .	47
Licenses and Certificates . . . . .	47
Radio Clubs . . . . .	48
Broadcasting . . . . .	48
Imperial Wireless Scheme . . . . .	48

**Financial Results of the Telegraph Department.**

Review . . . . .	49
------------------	----

**Financial position of the Posts & Telegraphs.**

Review . . . . .	49
------------------	----

**Personal Matters.**

Distinguished Field Service and Honours Conferred . . . . .	49
---	----



V

APPENDICES.

	PAGE.
I. Number of post offices, letter-boxes and village postmen and mileage of mail lines Post offices, letter-boxes and postal articles in relation to area and population	52—53
II. Estimated number of unregistered articles of the letter mail given out for delivery and actual number of registered articles and parcels posted .. .. .	54—55
III. Number of articles dealt with by Dead Letter Offices	56
IV. (a) Money order business in the last ten years ...	57
IV. (b) Inland (ordinary and telegraphic) money order business .	58
IV. (c) Money order transactions with the United Kingdom, British Possessions and Foreign countries and with five Indian States .. .. .	59—61
V. (a) Business of the Post Office Savings Bank . . . . .	62—63
V. (b) Statement of Post Office 5-Year Cash Certificates issued and discharged	64—65
VI Transactions of the Post Office Guarantee Fund	66
VII. Number of cases in which postal officials were guilty of offences punishable by law and number punished in those cases ... .. .	67
VIII. (a) Business of the Post Office Insurance Fund in Life Insurance, Endowment Assurance and Monthly Allowances	68—69
VIII. (b) Abstract of Life Insurance Policies, Endowment Assurance Policies and Monthly Allowance Contracts issued, discharged, lapsed and surrendered	70
IX Financial results of the Post Office Insurance Fund	71
X. Receipts, charges and general financial position of the Post Office .. . . .	72—75
XI. Principal steamer services .. . . .	76—78
XII. Total number of sent telegrams, total number of signalling operations entailed in their despatch from the office of origin to destination, with the necessary repetition at intermediate offices, and average number of signalling operations per sent telegram, for the last five years .	79
XIII. News-free and concessional message traffic during 1923-24	79
XIV Statistics of telegrams	80—83
XV. Growth of Telegraph Department and its operations from 1854-55 to 1923-24 .. .. .	84—87
XV. (a) Growth of Departmental Telephones from 1882 to 1923-24	88—89
XV. (b) Growth of Telephones under licensed companies at Calcutta, Madras, Bombay, Ahmedabad, Karachi, Rangoon and Moulmein from 1882 to 1923-24	90—91
XVI Working expenses per telegram under signalling and line maintenance and average value of a paid telegram from 1903-04 to 1923-24 .. .. .	92
XVII. Receipts, charges and general financial position of the Telegraph Department .. .. .	93—98
XVIII. Post Office and Telegraph staff .. .. .	99—105

---

APPENDICES.

---

## APPENDIX I.

Number of post offices, letter-boxes and village postmen and mileage of mail lines.

Names of Circles.	POST OFFICES, LETTER-BOXES AND VILLAGE POSTMEN.						DISTANCE OVER WHICH MAILS WERE CONVEYED BY—											
	NUMBER ON 31st MARCH 1923.			NUMBER ON 31st MARCH 1924.			RUNNERS AND BOATS		RAILWAY.		STEAMER SERVICES—SEA AND RIVER.		MAIL CARTS, HORSES, CAMELS, ETC.		MOTOR SERVICES.		TOTAL.	
	Post offices.	Letter-boxes.	Village postmen.	Post offices.	Letter boxes.	Village postmen	1922-23.	1923-24.	1922-23.	1923-24.	1922-23.	1923-24.	1922-23.	1923-24.	1922-23	1923-24	1922-23.	1923-24.
Bengal and Assam .	3,701	10,973	439	3,697	11,025	433	16,149	15,878	20	20	2,341	2,415	235½	217	292½	330½	19,038	18,860½
Bombay . . . . .	2,766	*9,769	1,388	2,790	9,744	1,376	12,533	12,178	38	38	3,212	3,309	1,178	1,137	402	517	17,363	17,179
Madras . . . . .	3,614	8,399	1,364	3,623	8,421	1,369	17,179	16,797	...	...	1,949	1,949	1,472	1,343	658	668	21,258	20,757
United Provinces .	2,362	6,684	2,077	2,322	6,609	2,072	8,534	8,906	...	...	...	..	918	896	252½	315	9,704½	10,117
Punjab and North-West Frontier .	3,242	5,434	1,653	3,152	5,313	1,599	11,923	11,855	...	...	...	..	2,046½	2,025	645	715	14,614½	14,595
Bihar and Orissa .	1,310	3,453	308	1,314	3,291	295	8,132	7,817	...	...	..	...	33	33	241	273	8,406	8,123
Burma . . . . .	457	2,649	358	464	2,823	377	1,866	1,874	1,755½	1,780½	7,797½	7,868½	1,129	1,152	250	299	12,798	12,974
Central . . . . .	1,789	2,057	877	1,764	2,029	884	12,236	12,033	...	...	..	...	926	822	359	327	13,520	13,182
Sind and Baluchistan	369	493	74	365	513	73	889	830	...	131	1,572	1,287	2,077½	1,771½	112	226	4,650½	4,245½
Railway Mail Service	...	304	...	...	269	...	...	...	34,088	34,214	1,208	1,213½	...	...	...	...	35,296	35,427½
Total	19,610	*50,214	8,536	19,491	50,037	8,478	89,441	88,168	35,901½	36,183½	18,079½	18,042	10,015½	9,396½	3,211	3,670½	156,648½	155,460½
Increase (+) or decrease (-)	...	...	...	-119	-177	-58	...	-1,273	...	+282	...	-37½	...	-619	...	+459½	...	-1,188

\*Revised figure.

Number of post offices and letter-boxes (including the letter-boxes at post offices) in relation to area and population and number of postal articles (excluding money orders) in relation to population.

Names of Circles.	Area in square miles	CENSUS OF 1921.		ONE POST OFFICE SERVES—			ONE LETTER-BOX SERVES—			Total number of postal articles (excluding money orders).	NUMBER OF POSTAL ARTICLES PER HEAD OF—	
		Population.	Literate population.	Square miles.	Population.	Literate population.	Square miles.	Population.	Literate population.		Population.	Literate Population.
Bengal and Assam . . . . .	148,381	55,582,708	4,817,437	40	15,034	1,303	10	3,758	326	251,549,527	4 53	52 22
Bombay . . . . .	140,568	23,421,771	2,047,334	50	8,395	732	11	1,866	163	228,477,590	9 75	111 59
Madras . . . . .	182,111	66,111,019	5,595,266	50	18,237	1,543	15	5,478	463	206,159,537	3 12	36 84
United Provinces . . . . .	161,886	47,765,832	1,735,016	69	20,571	747	18	5,311	193	131,101,809	2 75	75 56
Punjab and North-West Frontier	234,340	31,204,029	1,191,079	74	9,900	377	27	3,657	139	166,827,238	5 34	140 06
Bihar and Orissa . . . . .	111,829	37,961,858	1,701,489	85	28,690	1,295	24	8,209	368	67,094,685	1 77	39 43
Burma . . . . .	236,738	13,212,192	3,652,043	510	28,496	7,871	72	4,019	1,111	53,005,128	4 01	14 51
Central . . . . .	282,614	31,063,263	1,218,549	160	17,609	691	74	3,168	320	71,449,115	2 30	58 63
Sind and Baluchistan . . . . .	187,194	4,272,133	*222,081	513	11,704	608	213	4,366	253	32,222,942	7 54	145 09
<b>TOTAL</b> . . . . .	<b>1,685,661</b>	<b>310,594,805</b>	<b>22,180,294</b>	<b>86</b>	<b>15,935</b>	<b>1,138</b>	<b>24</b>	<b>4,467</b>	<b>319</b>	<b>1,207,887,571</b>	<b>3 89</b>	<b>54 45</b>

\* Revised figure.

## APPEN

*Estimated\* number of unregistered articles of the letter mail given out for*

Class of articles.	Bengal and Assam.	Bombay.	Madras.	United Provinces.
<i>Articles of the letter mail—</i>				
Paid unregistered letters . . . . .	99,614,392	83,572,434	82,509,736	45,332,452
Unpaid letters . . . . .	3,229,259	3,183,400	2,262,739	4,299,361
Registered letters and packets. { Ordinary . . . . .	3,875,942	3,393,269	4,927,644	3,099,572
{ Value-payable . . . . .	1,313,760	941,480	857,870	648,083
Insured letters . . . . .	902,706	524,160	1,256,880	485,282
Post cards . . . . .	113,467,732	108,818,206	85,373,839	60,473,958
"Registered" newspapers . . . . .	12,283,325	11,572,820	12,169,674	7,750,749
Ordinary unregistered packets . . . . .	13,298,801	13,958,851	14,654,594	7,263,813
Total . . . . .	247,990,917	225,969,620	204,012,976	129,353,268
<i>Articles of the parcel mail—</i>				
Ordinary registered parcels . . . . .	1,256,450	891,557	753,877	619,557
Insured parcels . . . . .	210,570	292,555	207,601	104,643
Value-payable registered parcels . . . . .	1,967,322	937,505	963,873	806,535
Ordinary unregistered parcels . . . . .	* 124,268	386,353	221,210	217,804
Total . . . . .	3,558,610	2,507,970	2,146,561	1,748,541
GRAND TOTAL . . . . .	251,549,527	228,477,590	206,159,537	131,101,809
Deduct—Number of articles deposited as "dead", &c., as undeliverable to either the addressees or the senders.	362,090	230,633	96,150	271,451
TOTAL NUMBER DELIVERED . . . . .	251,187,437	228,246,957	206,063,387	130,830,358

\*Computed from the actual figures

## DIX II.

*delivery and actual number of registered articles and parcels posted.*

Punjab and North-West Frontier.	Bihar and Orissa.	Burma.	Central.	Sind and Baluchistan.	Railway Mail Service.	TOTAL.	
						1923-24.	1922-23.
57,277,729	24,361,612	32,902,638	24,508,994	14,521,629	434,637	465,036,253	457,969,568
2,476,134	1,249,995	3,005,984	1,620,339	468,008	...	21,795,219	22,566,144
3,741,640	1,155,820	967,846	1,395,320	627,939	212,283	23,402,275	23,248,616
923,714	99,523	221,391	164,243	58,608	..	5,223,672	4,915,846
566,109	287,185	132,961	268,271	53,469	...	4,477,023	4,150,890
79,363,827	32,616,452	5,036,374	34,282,547	12,105,955	367,320	531,906,208	523,623,419
10,944,343	3,633,914	5,479,510	4,609,846	2,266,363	304,853	71,020,397	70,374,111
9,681,364	3,352,238	4,562,761	4,116,921	1,882,384	120,268	72,893,995	66,961,208
164,974,860	66,756,739	52,309,465	70,968,481	31,984,355	1,439,361	1,195,760,042	1,179,809,805
962,174	203,680	426,758	262,885	152,393	..	5,549,331	5,205,935
154,117	39,623	48,765	60,579	19,844	.	1,138,299	1,119,373
647,732	85,385	216,218	71,111	47,061	...	5,742,742	5,427,869
88,355	9,258	3,922	66,059	19,289	...	1,136,518	900,203
1,852,378	337,946	695,663	480,634	238,587	...	13,566,890	12,653,430
166,827,238	67,094,685	53,005,128	71,449,115	32,222,942	1,439,361	1,209,328,932	1,186,463,235
74,638	...	76,233	77,616	...	...	1,188,810	1,262,051
166,752,600	67,094,685	52,928,696	71,371,499	32,222,942	1,439,361	1,208,138,122	1,185,201,164

of 14 days of the year.

## APPENDIX III

## Number of articles dealt with by Dead Letter Offices.

Names of Dead Letter Offices.	RECEIVED FOR DISPOSAL*					Total for 1923-24	Total for 1922-23
	Unregistered letters and postcards.	"Registered" newspapers	Unregistered packets.	Registered letters, postcards and packets.	Parcels.		
Bombay . . . . .	1,448,215	36,734	287,178	57,741	6,542	1,836,410	2,789,931
Calcutta . . . . .	1,130,803	30,478	228,516	62,857	18,473	1,470,627	1,569,549
Madras . . . . .	1,595,989	23,935	94,040	156,516	13,547	1,884,027	2,061,561
Lahore . . . . .	1,324,140	37,152	62,778	15,610	5,111	1,444,791	1,908,735
Lucknow . . . . .	1,537,667	20,648	35,457	26,490	7,518	1,627,780	1,681,738
Nagpur . . . . .	390,784	8,135	12,202	7,533	1,642	420,296	463,922
Rangoon . . . . .	874,254	8,342	20,519	14,208	4,953	922,276	831,463
Total (a) . . . . .	8,301,352	165,424	740,690	340,955	57,786	9,606,297	11,906,899
(1) Issued for delivery to addressees.	4,023,867	71,410	158,410	36,234	17,826	4,307,797	5,128,238
Percentage on total (a).	48.47	43.17	21.39	10.64	30.85	44.84	45.36
(2) Issued for delivery to senders.	3,288,232	85,123	551,697	284,388	37,194	4,246,634	5,076,441
Percentage on total (a).	39.61	51.46	74.48	83.41	64.36	44.21	44.89
(3) Total of (1) and (2) .	7,312,099	156,533	710,107	320,672	55,020	8,554,431	10,204,679
Percentage on total (a).	88.08	94.63	95.87	94.05	95.21	89.05	90.25
(4) Actually delivered to addressees or senders.	7,178,769	156,533	710,055	318,412	53,628	8,417,397	10,044,848
Percentage of (4) on (3).	98.18	...	99.99	99.90	97.47	98.40	98.43
(5) Returned as undeliverable.	133,330	...	52	2,260	1,392	137,034	159,831
Percentage of (5) on (3).	1.82	...	.01	.70	2.53	1.60	1.57
(6) Deposited originally as "Dead", i.e., as undeliverable to either the addressees or the senders.	989,253	8,891	30,583	20,283	2,766	1,051,776	1,102,220
Percentage of (6) on total (a).	11.92	5.37	4.13	5.95	4.79	10.95	9.75
(7) Total deposited as "Dead."	1,122,583	8,891	30,635	22,543	4,158	1,188,810	1,262,051
Percentage of (7) on total (a).	13.52	5.37	4.14	6.61	7.20	12.38	11.16

\* The figures represent the total number of articles of each kind received in each Dead Letter Office from post offices and other Dead Letter Offices after deducting articles transferred to other Dead Letter Offices.

APPENDIX IV(a).

Money order business in the last ten years.

Year.	INLAND ORDERS (ISSUED).				FOREIGN ORDERS (ISSUED AND PAID).				GRAND TOTAL			
	Number.	Amount.	Percentage of increase (+) or decrease (-) in number.	Percentage of increase (+) or decrease (-) in amount.	Number.	Amount.	Percentage of increase (+) or decrease (-) in number.	Percentage of increase (+) or decrease (-) in amount.	Number	Amount.	Percentage of increase (+) or decrease (-) in number.	Percentage of increase (+) or decrease (-) in amount.
		Rs.				Rs.				Rs.		
1914-15	29,317,377	51,54,81,941	-2.08	+71	935,005	4,52,78,475	-10.59	-14.37	30,252,332	56,07,60,416	-2.37	-70
1915-16	31,281,231	53,92,17,506	+6.70	+4.61	1,041,363	4,74,18,70	+11.32	+4.73	32,322,594	58,60,36,207	+6.84	+4.61
1916-17	32,331,652	57,54,48,259	+3.36	+6.72	1,117,513	5,55,24,532	+7.31	+17.09	33,449,165	63,09,72,791	+3.49	+7.56
1917-18	33,903,625	62,77,87,899	+4.86	+10	1,285,727	12,92,78,378	+15.05	+132.83	35,189,352	75,70,66,277	+5.20	+19.98
1918-19	34,881,624	69,93,62,433	+2.8	+11.40	1,225,316	9,74,20,140	-4.69	-24.64	36,106,940	79,67,82,573	+2.60	+5.25
1919-20	37,632,888	74,1,43,409	+7.89	+6.83	1,357,927	12,73,67,907	+10.82	+30.74	38,990,815	87,45,11,316	+7.99	+9.76
1920-21	37,226,484	85,73,96,210	-1.08	+14.75	1,278,330	12,62,52,106	-5.86	-87	38,504,814	98,36,48,316	-1.25	+12.48
1921-22	33,328,207	78,41,66,052	-10.47	-8.54	1,038,048	6,56,14,734	-18.79	-48.02	34,366,257	84,97,80,786	-10.75	-13.61
1922-23	31,742,713	78,29,30,898	-4.75	-15	1,011,438	5,21,86,435	-2.56	-20.46	32,754,201	83,51,17,333	-4.69	-1.72
1923-24	32,579,252	80,00,60,606	+2.34	+2.26	1,050,778	4,86,08,296	+3.88	-6.85	33,630,030	84,92,68,902	+2.67	+1.68



APPENDIX IV (b).

Inland (ordinary and telegraphic) money order business.

	ORDINARY MONEY ORDERS.				TELEGRAPHIC MONEY ORDERS.				TOTAL.				Com- mission.  Rs.
	ISSUES.		PAYMENTS.		ISSUES.		PAYMENTS.		ISSUES.		PAYMENTS.		
	Number.	Amounts.	Number	Amounts	Number.	Amounts.	Number.	Amounts.	Number.	Amounts.	Number.	Amounts	
		Rs.		Rs.		Rs		ks.		Rs.		Rs.	
Bengal and Assem.	8,978,406	16,74,75,670	8,086,709	15,82,73,160	132,724	1,25,33,785	164,516	1,39,31,546	9,111,130	18,00,09,455	8,251,225	17,22,04,706	24,12,910
United Provinces.	8,672,176	7,68,56,959	5,362,713	11,58,07,224	44,190	35,56,755	91,451	73,70,033	8,716,366	8,04,13,714	5,454,164	12,31,77,257	10,93,474
Madras	4,805,095	9,40,61,412	5,184,514	10,70,22,980	100,616	81,32,226	234,554	1,80,50,616	4,905,711	10,21,93,638	5,419,068	12,50,73,602	14,07,957
Bombay	3,464,041	8,99,59,225	3,927,705	9,58,12,589	91,321	83,34,189	87,296	79,63,327	3,555,362	9,82,93,404	4,015,001	10,37,75,916	11,86,668
Punjab and North-West Frontier.	3,364,626	8,83,38,858	3,506,521	9,98,22,985	48,568	51,02,419	58,382	69,04,865	3,413,194	9,34,41,277	3,564,908	10,67,27,850	11,90,585
Burma	1,981,723	6,91,76,107	822,439	3,46,98,884	308,694	3,06,36,878	97,063	1,36,68,241	2,290,417	9,98,12,985	919,522	4,83,67,125	11,25,453
Bihar and Orissa.	2,677,445	5,61,27,855	3,312,154	6,62,22,873	35,696	28,22,234	43,190	35,03,238	2,713,141	6,09,56,069	3,355,344	6,97,26,111	8,00,237
Central	2,231,248	6,15,98,264	1,282,897	3,78,61,188	55,855	49,26,645	34,406	33,32,270	2,287,103	6,65,25,109	1,37,303	4,11,93,458	8,10,682
Sind and Baluchistan.	566,644	1,70,34,681	264,035	98,94,778	20,184	19,80,054	9,967	13,21,422	566,828	1,90,14,935	274,002	1,12,16,200	2,28,137
Total for 1923-24.	31,741,404	72,26,29,221	31,749,687	72,54,16,667	837,848	7,80,31,385	820,845	7,60,45,558	32,579,252	80,06,60,606	32,570,532	80,14,62,225	1,02,56,168
Total for 1922-23.	30,930,558	70,46,53,195	30,871,900	70,91,91,716	812,555	7,82,77,703	793,744	7,60,86,261	31,742,713	78,29,30,895	31,665,644	78,52,77,977	1,00,45,077
Increase (+) or decrease (-).	+ 811,246	+ 1,79,76,026	+ 877,787	+ 1,62,24,951	+ 25,293	- 2,46,318	+ 27,101	- 40,703	+ 836,539	+ 1,77,29,708	+ 904,888	+ 1,61,84,248	+ 2,11,076

AP-ENDIX IV (c).

Money order transactions with the United Kingdom, British Possessions and Foreign countries and with five Indian States.

Names of Foreign Countries and Indian States with which direct exchanges exist	ORDERS ISSUED BY INDIA.						ORDERS PAID IN INDIA										
	1922-23.		1923-24.		Percentage of increase (+) or decrease (-) in number.	Percentage of increase (+) or decrease (-) in amount.	1922-23.		1923-24		Percentage of increase (+) or decrease (-) in number.	Percentage of increase (+) or decrease (-) in amount.					
	Number.	Amount.	Number.	Amount.			Number.	Amount.	Number.	Amount.							
		A.—FOREIGN STERLING ORDERS.						A.—FOREIGN STERLING ORDERS.									
		£	s.	d.	£	s.	d.	£	s.	d.	£	s.	d.				
Great Britain and Ireland	106,683	380,941	18	2	125,305	423,724	10	5	24,476	157,225	2	11	28,110	197,805	2	3	
Nyasaland Protectorate.	2	1	5	10	40	1	1	500	6,508	11	5	654	7,706	14	3		
British Guiana	4	8	1	6	5	85	14	3	449	1,435	5	8	574	1,882	11	1	
Denmark	133	342	18	9	109	428	9	5	112	648	0	10	109	854	6	7	
Egypt	597	2,650	1	5	591	2,945	15	1	4,009	89,002	1	9	820	8,603	6	11	
Sudan	..	..	..	..	14	129	12	8	..	..	..	..	888	17,465	5	0	
France	943	2,391	18	5	1,422	3,736	13	0	474	2,137	6	8	417	1,197	2	7	
Italy	199	782	5	0	303	74	3	0	2,770	105,418	4	2	326	11,864	18	10	
Malta	83	681	5	10	195	1,432	5	1	29	858	1	5	36	306	14	4	
New South Wales	314	1,247	11	11	352	1,349	16	1	1,885	26,370	9	2	1,724	20,945	8	1	
New Zealand	99	417	6	8	104	451	7	8	1,616	14,751	13	5	1,498	12,483	15	6	
Norway	7	38	0	7	9	263	5	5	16	92	6	5	12	35	19	2	
Queensland	82	188	10	3	77	161	8	0	795	11,600	19	6	908	14,050	5	3	
South Australia	64	162	4	6	61	246	6	7	394	2,155	18	1	471	3,219	15	6	
Switzerland	216	719	12	5	269	646	10	1	182	695	4	6	199	697	7	2	
Tasmania	43	177	9	2	80	383	3	9	134	621	14	10	139	516	4	1	
Trinidad	3	44	0	0	7	42	11	8	661	2,576	12	8	840	3,876	6	6	
South Africa, Union of—Provinces of Cape of Good Hope, Orange Free State, Natal and Transvaal.	270	1,850	19	7	285	2,342	0	7	12,476	191,407	8	11	10,955	146,282	19	9	
Victoria	275	1,098	13	5	346	1,509	1	3	1,309	12,955	8	4	1,342	12,619	0	10	
Western Australia	80	812	0	9	85	412	19	7	392	3,400	18	5	385	3,875	16	11	
Fiji Islands	15	232	0	0	21	386	0	2	1,974	21,732	15	6	1,759	16,853	4	6	
Colony and Protectorate of Kenya and Uganda Protectorate	195	669	19	6	165	782	11	2	9,445	112,330	7	4	9,313	101,276	2	2	
TOTAL	110,312	394,918	12	10	129,819	442,296	6	0	64,098	764,567	13	5	61,459	584,468	7	2	
							+17	68				+12	'00		-4	12	
																-23	56

OF INDIA FOR THE YEAR 1923-24.

Money order transactions with the United Kingdom, British Possessions and Foreign countries and with five Indian States—contd.

Names of Foreign countries and Indian States with which direct exchanges exist.	ORDERS ISSUED BY INDIA.						ORDERS PAID IN INDIA.								
	1922-23.		1923-24.		Percentage of increase (+) or decrease (-) in number.	Percentage of increase (+) or decrease (-) in amount.	1922-23.		1923-24.		Percentage of increase (+) or decrease (-) in number.	Percentage of increase (+) or decrease (-) in amount.			
	Number.	Amount.	Number.	Amount.			Number.	Amount.	Number.	Amount.					
Total as above with amounts converted into Indian currency at the rates of exchange current from time to time (A).	110,812	Rs. 61,76,421 13	129,819	Rs. 66,95,420 13	+17.68	+8.24	64,098	Rs. 1,16,07,277	61,459	Rs. 84,49,242 1	-4.12	-27.21			
		B.—FOREIGN RUPEE ORDERS.						B.—FOREIGN RUPEE ORDERS.							
		Rs.	A.	Rs.	A.			Rs.	A.	Rs.	A.				
British Somaliland . . . . .	183	29,157	9	198	33,554	10	...	6.7	41,560	0	559	24,945	2	...	
Ceylon . . . . .	21,621	10,3,117	2	27,600	10,19,637	15	...	321,650	92,09,790	11	342,143	97,6,262	11	...	
Federated Malay States . . . . .	785	38,878	6	644	41,600	15	...	46,218	35,19,084	5	46,680	34,02,370	14	...	
Hong Kong . . . . .	1,126	1,33,175	15	1,054	1,07,017	12	...	2,258	2,31,041	15	1,569	1,67,858	2	...	
Iraq . . . . .	1,824	1,59,447	6	1,446	1,41,451	2	...	68,987	58,12,284	8	81,390	31,13,387	4	...	
Kedah . . . . .	81	1,968	1	84	1,879	10	...	2,610	1,65,919	8	2,772	1,70,418	8	...	
Manritia . . . . .	144	9,880	3	96	9,532	9	...	491	1,10,143	12	1,904	4,15,308	12	...	
North Borneo . . . . .	1	6	0	7	814	2	...	553	44,205	15	570	35,473	12	...	
Persia . . . . .	9,691	4,52,670	7	281	20,820	0	...	8,710	3,10,052	8	6,654	6,66,794	13	...	
Portuguese Settlements in India . . . . .	11	137	10	6	327	0	...	422	29,411	13	480	30,513	0	...	
Sarawak . . . . .	89	12,604	2	103	8,391	5	...	429	61,770	6	496	69,490	13	...	
Seychelles . . . . .	976	53,172	4	840	51,212	8	...	43,324	31,24,858	9	44,328	30,94,453	0	...	
Straits Settlements . . . . .	122	18,063	13	90	8,358	3	...	3,419	3,30,303	6	4,477	4,44,654	4	...	
Zanzibar (Br. Protectorate) . . . . .	57	6,373	11	78	5,475	1	...	1,281	94,231	6	1,467	1,11,502	2	...	
Siam . . . . .	36,861	19,48,633	9	42,503	18,75,209	9	+15.81	-3.77	501,529	2,30,74,701	10	501,022	2,18,44,769	11	-1.10
TOTAL (B)															
		C.—INDIAN STATE RUPEE ORDERS.						C.—INDIAN STATE RUPEE ORDERS.							
		Rs.	A.	Rs.	A.			Rs.	A.	Rs.	A.				
Chamba . . . . .	1,687	38,440	7	1,393	35,258	3	...	3,619	1,03,393	0	3,760	92,071	13	...	
Gwahor . . . . .	47,749	14,92,161	6	50,548	14,92,584	11	...	1,03,048	29,76,588	1	1,12,533	32,42,100	12	...	
Jind . . . . .	9,750	8,57,241	8	9,608	8,52,856	2	...	14,061	3,81,000	15	15,923	4,41,027	2	...	
Mahha . . . . .	8,566	3,84,243	11	7,995	3,45,235	0	...	10,335	3,97,292	11	12,435	4,45,022	2	...	
Patiala . . . . .	45,301	17,76,302	13	42,587	16,04,545	0	...	53,032	4,06,176	13	54,793	16,80,530	11	...	
TOTAL (C)	113,953	40,52,689	13	12,126	38,30,459	0	-7.73	-5.44	185,731	54,26,446	8	203,844	59,21,772	8	+9.75
GRAND TOTAL, BEING TOTAL OF (A), (B) AND (C).	260,136	1,21,77,805	3	284,430	1,23,91,089	6	+9.35	-1.73	751,358	4,00,08,425	3	706,323	3,62,16,784	4	-1.99

---

**APPENDIX V(a).**

---

## APPEN

*Business of the Post*

Names of Circles.	Number of Head Banks.	Number of Sub-Banks.	BALANCE OF ACCOUNTS.				Opening balance.	Deposits.
			Balance of the preceding year.	Opened during the year.	Closed during the year.	Balance		
						Rs. A. P.	Rs. A. P.	
Bengal and Assam	39	2,550	5,76,420	71,854	34,520	6,13,754	6,10,45,708 6 11	4,92,74,127 14 0
Bihar and Orissa	21	855	1,31,925	22,553	13,791	1,40,687	1,52,21,451 8 10	1,24,32,728 5 5
Bombay . . .	25	1,434	3,65,613	52,196	53,671	3,64,138	4,69,07,519 13 1	2,99,87,903 9 6
Burma . . .	23	347	76,581	16,178	12,896	79,863	77,14,905 0 6	76,50,628 6 0
Central . . .	21	767	1,02,816	18,525	18,113	1,03,228	1,20,02,537 15 3	1,05,57,861 13 2
Madras . . .	37	1,838	2,31,130	54,283	35,165	2,50,248	1,43,90,864 14 0	1,89,43,553 15 11
Punjab and North-West Frontier	38	869	2,51,563	63,561	74,845	2,40,279	3,59,24,012 12 3	3,97,92,015 6 5
United Provinces	47	1,401	2,57,351	56,569	67,012	2,46,848	3,23,19,010 10 9	3,21,62,293 2 11
Sind and Baluchistan.	4	219	50,103	10,457	10,291	50,269	64,32,749 13 8	64,31,565 4 4
Total for 1923-24	255	10,280	20,43,502	3,66,116	3,20,304	20,89,314	23,19,98,760 15 3	20,72,12,677 13 8
Total for 1922-23	261	10,469	19,58,324	3,70,740	2,85,562	20,43,502	22,26,24,844 6 11	20,15,10,578 11 0
Increase (+) or decrease (-).	-6	-189	+85,178	-4,624	+34,742	+45,812	+93,73,916 8 4	+57,02,099 2 8
Percentage of increase (+) or decrease (-).	-2.29	-1.80	+4.34	-1.24	+12.16	+2.24	+4.21	+2.82

\* This includes a sum of Rs. 3,00,55,902-11-2 on account of transfers of

DIXV(a).

Office Savings Bank.

Interest.		Total		Withdrawals		Balance.		Average number of depositors per bank.	Average balance in each bank.	Average balance at credit of each depositor
Rs.	A. P.	Rs.	A. P.	Rs.	A. P.	Rs.	A. P.		Rs.	Rs.
17,81,646	0 4	11,21,01,482	5 3	4,61,44,416	2 7	6,59,57,066	2 8	237'06	25,475 88	107'46
4,36,811	1 9	2,80,90,991	0 0	1,19,52,050	2 2	1,61,38,940	13 10	160 60	18,423 44	114 71
13,52,647	6 7	7,82 48,070	13 2	3,01,47,258	0 7½	4,81,00,819	12 6½	249 58	32,968 34	132 09
2,12,884	8 8	1,55,58,417	15 2	75,60,714	15 11	79,97,702	15 3	215 84	21,615 41	100 14
3,37,376	0 6	2,28,97,775	12 11	1,01 29,664	14 8	1,27,68,110	14 3	131 00	16,203 18	123'68
4,02,726	12 0	3,37,37,145	9 11	1,84,45,495	9 0	1,52,91,650	0 11	133 46	8,155 54	61 10
10,40,595	14 5	7,67,56,624	1 1	3,78,03,380	1 3	3,89,53,243	15 10	264'91	42,947 34	162'11
9,57,764	15 9	6,54,79,068	13 5	2 96,81,699	4 0	3,57,97,369	9 5	170 47	24,721 94	145'01
1,85 616	14 4	1,30,49,932	0 4	61,71,659	2 5	68,78,272	13 11	225'42	30,844'27	136 82
67,08,069	10 4	44,59,19,508	7 3	19,80,36,338	4 7½	24,78,83,1'0	2 7½	198 32	23,529 48	118'64
62,99,036	11 11	43,04,34,459	13 10	19,84,35,698	14 7	23,19,98,760	15 3	190 44	21,621'50	113'52
+ 4,09,034	14 5	+ 1,54,85,043	9 5	- 3,99,360	9 11½	+ 1,58,84,409	3 4½	+ 7 28	+ 1,907 98	+ 5'12
+ 6 49		+ 3 59		- '20		+ 6 84		+ 4 13	+ 8 82	+ 4 51

Savings Bank Accounts from one post office to another.

## APPEN

## Statement of Post Office 5-year Cash

Names of Circles.	ISSUED.						Cost price realised.	
	Denominations.						Rs.	A.
	10	20	50	100	500	1000		
Bengal and Assam	18,534	5,608	6,484	28,434	21,265	5,468	1,46,74,200	0
Bihar and Orissa	1,433	1,374	970	4,814	4,221	1,090	28,29,158	0
Bombay	6,927	6,461	8,648	34,843	23,862	5,024	1,58,02,642	8
Burma	475	459	445	2,203	2,321	565	14,86,485	0
Central	3,195	1,892	2,074	8,647	7,361	1,770	48,66,517	8
Madras	2,320	1,164	1,643	5,181	3,971	1,718	82,64,172	8
Punjab and North-West Frontier.	2,004	2,410	3,487	14,930	16,061	3,892	1,02,42,442	8
United Provinces	4,550	4,490	4,906	20,684	17,763	5,769	1,23,26,019	0
Sind and Baluchistan	1,120	1,123	1,224	6,349	4,672	1,012	30,88,320	0
Total	40,758	24,971	29,881	1,26,085	1,01,497	26,348	6,90,79,957	0
Total for the preceding year.	6,815	4,412	6,899	24,017	12,266	...	70,00,083	8
Increase (+) or decrease (-).	+34,443	+20,559	+22,982	+1,02,068	+89,231	+26,348	+6,20,79,873	8
Percentage of increase (+) or decrease (-).	+545.41	+460.89	+333.12	+424.98	+727.46	...	+885.84	

## DIX V(b).

*Certificates issued and discharged.*

DISCHARGED.								
Denominations.						AMOUNT PAID.		
10	20	50	100	500	1000	Principal.	Interest.	TOTAL.
						Rs. A. P.	Rs. A. P.	Rs. A. P.
30,477	4,903	4,193	13,628	4,578	198	34,39,220 8 0	5,97,946 3 1	40,37,166 11 1
8,330	1,215	1,043	3,195	1,300	11	8,80,270 8 0	1,68,412 0 11	10,48,682 8 11
11,611	4,273	3,946	12,292	3,897	114	28,43,643 4 0	4,50,934 4 6	32,94,577 8 6
4,858	2,006	960	3,011	1,356	39	8,92,195 8 0	2,00,975 15 6	10,93,171 7 6
7,234	2,465	1,399	4,907	1,901	80	13,16,568 8 0	2,04,456 8 6	15,21,025 0 6
6,604	1,949	1,575	4,063	1,255	51	9,77,181 4 0	1,81,150 14 0	11,58,332 2 0
9,500	4,678	2,664	9,717	3,331	106	23,56,469 0 0	4,12,990 4 9	27,69,459 4 9
11,777	3,345	2,903	9,705	4,040	141	26,51,177 13 0	4,52,169 7 9	31,03,347 4 9
1,994	703	623	2,705	1,242	64	7,85,931 4 0	1,05,608 12 3	8,91,540 0 3
93,385	25,537	19,311	63,223	22,900	804	1,61,42,657 9 0	27,74,644 7 3	1,89,17,302 0 3
1,22,902	42,440	26,493	1,44,891	13,692	..	1,81,70,517 4 0	48,50,985 8 7	2,40,21,502 12 7
-30,517	-16,908	-7,182	-31,668	+9,208	+804	-30,27,859 11 0	-20,76,341 1 4	-51,04,200 12 4
-24 83	-39 82	-27 10	-56 36	+67 25	...	-15 79	-42 80	-21 24



## APPENDIX VI.

*Transactions of the Post Office Guaranteed Fund; 1923-24.*

	Government Securities (nominal value).	Cash.
	Rs.	Rs.
Balance of 1922-23	11,13,500	—12,151(a)
Government securities sold and discharged	—10,500	
<i>Receipts—</i>	11,03,000	
Interest on Government Securities of 3½ per cent. loan.	10	
Interest on Government Securities of 4 per cent. conversion loan of 1916-17.	17,392	
Interest on Government Securities of 5 per cent. War loan of 1929-47.	30,145	
Interest on Government Securities of 5½ per cent. War Bond of 1928.	2,750	
Interest on Government Securities of 6 per cent. Bond of 1930.	1,500	
Interest on Government Securities of 4 per cent. Terminable loan of 1915-16.	20	
Interest on the balance of 1923-24	462	
Interest on duplicate notes to be issued in lieu of G. P. notes lost.	345	
Discharge value of 4 per cent. terminable loan of 1915-16 for Rs. 500.	500	
Sale proceeds of G. P. notes for Rs. 10,000	10,421	
Recoveries against awards of previous year	2,452	
Recoveries against awards of current year	262	
Recoveries of travelling expenses for medical examination of Post Office Life Insurance.	180	
Total	66,439	
<i>Deduct</i> interest on the deficit balance of the Fund for the year 1922-23.	—337	
Balance	66,052	
<i>Charges—</i>		
Sums decreed against the Fund	33,414	
Reward for information in Post Office robbery cases and for specially honest and courageous service	3,492	
Compensation to postal servants for loss of private property.	1,686	
Compassionate gratuity	12,044	
Travelling expenses for medical examination for Post Office Life Insurance.	342	
Value of Government security repaid	—138	
Total	50,841	
Surplus for the year	15,212	15,212
Balance on 31st March 1924	11,03,006	3,061

(a) Differs from the closing balance shown in the Annual Report for 1922-23 by Rs. 417 owing to the amount having been charged to the fund after the publication of the Report.

(b) The market value on 31st March 1924 of 3½ per cent. loan was Rs. 200-4-0; of 4 per cent. conversion loan of 1916-17 was Rs. 3,60,884 (Monday Market quotation); of 5 per cent. War loan of 1929-47 was Rs. 5,62,957-14-0; of 5½ per cent. War Bonds of 1928 was Rs. 41,600; and of 6 per cent. Bonds of 1930 was Rs. 28,718-12-0.

**APPENDIX VII.**

*Number of cases in which postal officials were guilty of offences punishable by law and number punished in those cases.*

**ASCERTAINED CASES AGAINST POSTAL OFFICIALS.**

Names of Circles,	CONVICTIONS IN COURTS OF LAW.		DEPARTMENTAL PUNISHMENT		TOTAL.	
	Number of cases.	Number of offenders	Number of cases.	Number of offenders.	Number of cases.	Number of offenders.
Bengal and Assam . . . . .	41	42	64	60	105	102
Bombay . . . . .	29	29	33	33	62	62
Madras . . . . .	58	34	65	48	123	82
United Provinces . . . . .	31	27	27	27	58	54
Punjab and North-West Frontier . . . . .	57	51	41	40	98	91
Burma . . . . .	31	22	2	2	33	24
Bihar and Orissa . . . . .	108	21	16	10	124	31
Central Circle . . . . .	45	28	7	7	52	35
Sind and Baluchistan . . . . .	1	1	8	9	9	10
Railway Mail Service . . . . .	10	11	9	9	19	20
Total for 1923-24	411	266	272	245	518	511
Total for 1922-23	487	274	281	257	768	531

**NOTE** — The figures in this appendix show the cases in which punishment was awarded during the year, as it is only when a case is closed that it can be entered with certainty as having been committed by a postal official. Besides the 518 cases shown above, there were 106 cases in which postal officials were charged with offences, but no punishment was imposed owing to the case not being concluded or to the death or escape of the offenders.

## APPEN

*Business of the Post Office Insurance Fund, in Life*

	LIFE INSURANCE.						ENDOWMENT ASSURANCE.									
	Number of lives insured.	Amount insured.	Amount received in prema, including fines and medical fees.			Amount of claims met, including cost of establishment maintained for the work.			Number of lives insured.	Amount insured.	Amount received in prema, including fines and medical fees.			Amount of claims met, including cost of establishment maintained for the work.		
			Rs.	Rs.	A. P.	Rs.	A.	P.			Rs.	Rs.	A.	P.	Rs.	A.
Post and Telegraph Department.	330	5,40,011	1,51,643	12	6	1,53,303	10	3	1,516	24,22,230	7,53,251	10	4	4,61,073	6	0
Local Funds.	26	79,500	8,404	1	1	4,722	0	0	93	2,22,000	42,885	7	10	21,106	5	0
Other Civil Departments	351	10,75,858	2,97,934	11	8	1,31,225	2	7	1,791	48,18,500	15,20,930	14	3	8,50,116	1	5
Military Department.	53	1,70,500	32,151	6	6	7,284	0	0	200	5,71,400	1,08,571	4	8	49,629	10	9
Total for 1923-24	(a) 760	19,65,869	4,90,133	15	9	2,96,534	12	10	(b) 3,600	80,34,130	24,25,639	5	1	18,81,925	7	2
Total for 1922-23.	683	18,17,425	4,33,565	3	1	2,61,720	0	6	3,546	76,87,950	21,37,667	1	0	12,11,730	8	3
Increase .	77	48,444	56,568	12	8	34,814	12	4	54	3,46,180	2,88,032	4	1	1,70,194	14	11
Decrease .	...	...	...	...	...	...	...	...	...	...	...	...	...	...	...	...

	Asiatic.	Non-Asiatic.		Asiatic.	Non-Asiatic.
(a) 1923-24 .	731	29	(b) 1923-24 .	3,504	96
1922-23 .	662	21	1922-23 .	3,429	117

\* Revised

DIX VIII(a).

Insurance, Endowment Assurance and Monthly Allowances.

GRAND TOTAL.				MONTHLY ALLOWANCES.			
Number of lives insured.	Amount insured.	Amount received in premia, including fines and medical fees.	Amount of claims met, including cost of establishment maintained for the work.	Number of Subscribers.	Amount of monthly allowances secured.	Amount of subscriptions received.	Amount of claims met, including cost of establishment maintained for the work.
	Rs.	Rs. A. P.	Rs. A. P.		Rs. A. P.	Rs. A. P.	Rs. A. P.
1,846	29,62,241	9,04,895 6 10	6,14,377 0 3	2	3 0 0	40 2 2	17 0 0
119	3,01,500	51,289 8 11	25,828 5 0	...	...	...	3,846 4 5
2,142	58,94,358	18,18,865 9 11	9,81,341 4 0	1	5 0 0	625 9 0	946 8 0
253	7,41,900	1,40,722 11 2	56,913 10 9	...	...	...	6 0 0
4,360	93,99,999	29,15,773 4 10	16,78,460 4 0	(c) 3	8 0 0	665 11 2	4,815 12 5
4,229	95,05,375	25,71,172 4 1	14,73,450 8 9	2	14 8 0	2,411 5 3	4,984 10 9
131	3,94,624	3,44,601 0 9	2,05,009 11 3	1	...	...	...
...	...	...	...	...	6 8 0	1,745 10 1	168 14 4

	Asiatic.	Non-Asiatic.
(c) 1923-24 . . . . .	3	...
1922-23 . . . . .	2	...

figures,

## APPENDIX VIII (b).

*Abstract of Life Insurance Policies, Endowment Assurance Policies and Monthly Allowance Contracts issued, discharged, lapsed and surrendered.*

	LIFE INSURANCE POLICIES ISSUED.			ENDOWMENT ASSURANCE POLICIES ISSUED			MONTHLY ALLOWANCE CONTRACTS ISSUED.			
	Number.	Amount.		Number	Amount.		Number.	Amount.		
		Rs	A. P.		Rs.	A. P.		Rs	A. P.	
Balance of 1922-23 . . . . .	7,947	1,46,29,197	0 0	32,041	5,10,49,726	0 0	73	688	4 8	
Issued during the year . . . . .	760	18,65,869	0 0	3,600	80,34,130	0 0	3	8	0 0	
<b>TOTAL</b> . . . . .	<b>8,707</b>	<b>1,64,95,066</b>	<b>0 0</b>	<b>35,641</b>	<b>5,90,83,856</b>	<b>0 0</b>	<b>76</b>	<b>696</b>	<b>4 8</b>	
<i>Deduct</i> —Discharged during the year. By death	124	(a) 2,41,342	0 0	296	4,09,604	0 0	} (b)	8	42	4 1
„ maturity	...	..		424	7,23,891	0 0		...	...	
„ surrender	56	76,350	0 0	277	2,93,999	0 0		...	...	
„ lapse . . . . .	14	17,300	0 0	124	1,29,400	0 0		...	...	
„ cancella- tion.	1	5,000	0 0	13	22,000	0 0		...	...	
<b>TOTAL</b> . . . . .	<b>195</b>	<b>3,39,992</b>	<b>0 0</b>	<b>1,134</b>	<b>15,78,894</b>	<b>0 0</b>	<b>8</b>	<b>42</b>	<b>4 1</b>	
Balance on 31st March 1924 . . . . .	8,512	1,61,55,074	0 0	34,507	5,75,04,962	0 0	68	654	0 7	

(a) In addition to this sum Rs. 39,292 was paid as bonus on Life Insurance Policies

(b) In addition to these sums Rs 79,764 was paid as bonus on Endowment Assurance Policies.

APPENDIX IX.

Financial results of the Post Office Insurance Fund.

Life Insurance.			Endowment Assurance.			Monthly Allowances.		
	Rs. A. P.	Rs. A. P.		Rs. A. P.	Rs. A. P.		Rs. A. P.	Rs. A. P.
<b>Receipts—</b>			<b>Receipts—</b>			<b>Receipts—</b>		
Balance on 1st April 1923		*44,45,449 6 11	Balance on 1st April 1923		*	Balance on 1st April 1923	...	85,616 7 4
Premia realised on Life Insurance Policies	4,69,799 11 9	..	Premia realised on Endowment Assurance Policies	24,23,480 6 4	..	Subscriptions realised	665 11 2	..
Fines realised	314 4 0	..	Fines realised	1,566 2 9	..	Amount paid in lump for purchase of immediate monthly allowance	..	..
Medical fees realised	20 0 0	..	Medical fees realised	592 12 0	..	Fines realised	..	..
<b>TOTAL</b>		<b>49,01,33 15 9</b>	<b>TOTAL</b>		<b>24,25,639 5 1</b>	<b>TOTAL</b>		<b>665 11 2</b>
<b>Payments—</b>			<b>Payments—</b>			<b>Payments—</b>		
Life Insurance Policies paid	2,44,461 13 8	..	Endowment Assurance Policies paid	11,34,698 4 10	..	Allowances paid	4,715 12 5	..
Surrender values paid	24,873 0 0	..	Surrender values paid	1,35,86 0 0	..	Surrender values paid	..	..
Medical fees paid	2,800 0 0	..	Medical fees paid	13,769 4 0	..	Refunds of subscription	..	..
Refunds of medical fees	..	..	Refunds of medical fees	60 0 0	..	Cost of postal establishment, including printing, etc.	100 0 0	..
Other refunds	1,614 15 2	..	Other refunds	10,524 14 4	..	Fees for actuarial report	..	..
Cost of postal establishment, including printing, etc.	22,785 0 0	..	Cost of postal establishment, including printing, etc.	87,467 0 0	..	<b>TOTAL</b>		<b>4,815 12 5</b>
Fee for actuarial report	..	..	Fee for actuarial report	..	..			
<b>TOTAL</b>		<b>2,96,534 12 10</b>	<b>TOTAL</b>		<b>13,81,925 7 2</b>			
<b>Deduct—</b> Net reserve value of policies converted from Life Insurance to Endowment Assurance		3,632 0 0	<b>Add—</b> Net reserve value of policies converted from Life Insurance to Endowment Assurance		3,632 0 0			
Interest on balance		1,69,309 7 8	Interest on balance		5,62,793 4 10	Interest on balance	..	2,912 1 9
Balance on 31st March 1924		47,94,526 1 6	Balance on 31st March 1924		1,70,86,629 7 5	Balance on 31st March 1924	..	84,378 7 10

\* Revised figures.

OF INDIA FOR THE YEAR 1923-24.

**APPEN**  
**RECEIPTS, CHARGES AND GENERAL FINAN**  
*Part I.—Receipts*

RECEIPTS.	Amount.	
	Rs.	Rs.
Postage realised in cash . . . . .	16,10,823	
DEDUCT—Refunds of postage . . . . .	3,290	
		16,07,533
Gross sale of ordinary postage stamps . . . . .	6,80,22,004	
DEDUCT—Civil Department share . . . . .	19,00,800	
Net payments made by India in respect of correspondence and parcels exchanged with other countries . . . . .	—6,92,728	
	12,09,072	
Net Post Office and Telegraph Department share of sale of ordinary postage stamps . . . . .	6,68,13,932	
Gross sale of service postage stamps . . . . .	80,54,283	
Total Post Office and Telegraph Department share of sale of postage stamps .	7,57,68,215	
DEDUCT—Telegraph Department share . . . . .	2,07,32,173	
Net Post Office share of sale of postage stamps . . . . .	...	5,50,36,042
Receipts on account of money orders and British postal orders . . . . .	...	1,06,32,794
<b>Fees and other receipts—</b>		
Fees for window delivery tickets . . . . .	70,847	
Contributions from private individuals and Indian States . . . . .	7,083	
Supply of overprinted stamps to Indian States . . . . .	23,634	
Recoveries on account of mail robberies . . . . .	311	
Sale of books, forms and maps . . . . .	11,155	
Other Items . . . . .	5,60,984	
<b>TOTAL</b> .	<b>6,78,964</b>	

DIX X.

CIAL POSITION OF THE POST OFFICE.  
and Charges.

CHARGES.		Amount.		
CHARGES SHOWN IN THE POST OFFICE ACCOUNTS.		Rs.	Rs.	
CONTROL . . .	Pay of Officers . . . . .	7,50,638	36,77,873	
	Pay of permanent Establishment . . . . .	18,97,285		
	Pay of temporary Establishment . . . . .	12,581		
	Allowances, Honoraria, etc . . . . .	2,18,632		
	Apparatus and Plant . . . . .	4,428		
	Other supplies and services . . . . .	5,18,407		
	Contingencies . . . . .	2,75,902		
OFFICE OF ACCOUNT AND AUDIT.	Pay of officers . . . . .	1,55,534	19,69,628	
	Pay of permanent Establishment . . . . .	17,36,375		
	Pay of temporary Establishment . . . . .	61,875		
	Allowances, Honoraria, etc. . . . .	50,473		
	Maintenance and repair of buildings, etc. . . . .	1,423		
	Other supplies and services . . . . .	437		
	Contingencies . . . . .	62,645		
DEDUCT—Cost of establishment of the Life Insurance Section of the Accountant General's Office debitable to Postal Insurance Section		—99,134		
PRESIDENCY AND DISTRICT OFFICES	Pay of officers . . . . .	11,05,392	4,17,58,743	
	Pay of permanent Establishment . . . . .	3,57,13,406		
	Pay of temporary Establishment . . . . .	1,69,875		
	Allowances, Honoraria, etc. . . . .	16,73,334		
	Other supplies and services . . . . .	2,42,131		
	Maintenance and repairs of buildings and Tel. Lines, etc. . . . .	2,52,652		
	Contingencies . . . . .	26,01,953		
CONVEYANCE OF MAILS.	Subsidies and payments to Railway Companies, etc . . . . .	38,08,943		
ROAD ESTABLISHMENT AND CHARGES.	Pay of permanent Establishment . . . . .	30,46,729	1,03,71,971	
	Pay of temporary Establishment . . . . .	19,389		
	Allowances, Honoraria, etc . . . . .	59,375		
	Other supplies and services . . . . .	1,38,224		
	Contingencies . . . . .	49,959		
FERRY AND BOAT ESTABLISHMENT CHARGE.	Pay of permanent Establishment . . . . .	15,407	15,59,828	
	Pay of temporary Establishment . . . . .	138		
	Allowances, Honoraria, etc. . . . .	8,480		
	Contingencies . . . . .	1,240		
RAILWAY CHARGES	Subsidies and payments to Railway Companies, etc —	7,285	15,59,828	
	Gratuities to Masters of Ships . . . . .	2,57,307		
	Special train hire . . . . .	27,206		
	Construction of vans . . . . .	29,32,239		
	Other payments to railways . . . . .	29,32,239		
STATIONERY AND PRINTING.	Stationery supplied by Superintendent, Government Printing . . . . .	3,01,589	33,523	
	Stationery supplied for Central Stores . . . . .	5,90,599		
	Stationery purchased or manufactured in the country . . . . .	54,503		
	Printing at Government presses . . . . .	4,33,162		
	Printing at jail and private presses . . . . .	4,473		
	Printing at Departmental presses.	Pay of Permanent Establishment . . . . .		1,07,232
		Pay of temporary Establishment . . . . .		9,062
		Allowances, Honoraria, etc. . . . .		1,567
		Stores . . . . .		11,450
		Contingencies . . . . .		46,191
STORES AND WORKSHOP ESTABLISHMENT.	Pay of Officers . . . . .	9,188	33,523	
	Pay of permanent Establishment . . . . .	29,792		
	Pay of temporary Establishment . . . . .	488		
	Allowances, Honoraria, etc. . . . .	3,055		
	Contingencies . . . . .	3,055		
MISCELLANEOUS	Contingencies . . . . .	36,92,057	39,92,749	
	Compensation for loss . . . . .	1,67,085		
	Other supplies and services . . . . .	1,33,607		
Superannuation allowances and pensions . . . . .		...	20,08,806	
TOTAL		...	6,53,73,121	



## APPEN

## Part I—Receipts

RECEIPTS.	Amount.	
	Rs.	Rs.
DEDUCT—Refunds of window delivery fees . . . . .	80	...
Refunds of other receipts . . . . .	1,09,970	
	1,10,050	
Net fees and other receipts . . . . .	...	5,63,914
Contribution of pensions and gratuities . . . . .		13,954
TOTAL RECEIPTS AS PER POST OFFICE ACCOUNTS . . . . .	{ For 1923-24 . . . . .	6,78,54,237
	{ For 1922-23 . . . . .	6,56,61,076

## Part II—General

	Credit item.	
	1922-23.	1 23-24.
RECEIPTS.	Rs.	Rs.
Post Office Accounts . . . . .	6,56,61,076	6,78,54,237
Finance and Revenue Accounts . . . . .	...	...
ADJUSTMENTS.		
(a) Share of marine subsidies strictly chargeable to other Departments.	4,43,729	...
(b) Estimated cost of managing the Post Office Savings Bank . . . . .	19,51,000	21,87,000
(c) Estimated value of free services rendered to Indian States . . . . .	9,19,165	...
(d) Estimated cost of cash certificate work . . . . .	2,52,729	3,58,562
Total . . . . .	6,92,27,699	7,03,99,799
Less debit—total . . . . .	6,65,60,519	6,68,77,134
Net Surplus . . . . .	26,67,180	35,22,665

**DIX X—contd**  
and Charges—contd.

CHARGES.	Amount.	
	Rs.	Rs.
(B)—CHARGES NOT SHOWN IN THE POST OFFICE ACCOUNTS BUT DEBITED TO THE POST OFFICE IN THE FINANCE AND REVENUE ACCOUNTS.		
Stores from England . . . . .		
Payments under Postal arrangements with the Lords of the Treasury		
Absentee allowances and contingent expenses . . . . .	1,43,018	1,43,018
GRAND TOTAL . . . . .		
	{ For 1923-24 . . . . .	6,55,16,139
	{ For 1922-23 . . . . .	6,30,37,237

*Financial Position.*

	Debit items	
	1922-23.	1923-24.
	Rs.	Rs.
<b>CHARGES</b>		
Post Office Accounts . . . . .	6,29,84,811	6,53,73,121
Finance and Revenue Accounts . . . . .	52,426	1,43,018
<b>ADJUSTMENTS</b>		
(a) Estimated Railway free service . . . . .	35,023	...
(b) Rent of Government buildings . . . . .	12,76,199	12,94,406
(c) Gratuities . . . . .	14,596	...
(d) Pensions (average of 5 years capitalised at 10 1/5 years, purchase) . . . . .	21,41,333	...
(e) Absentee allowances not included in the Finance and Revenue Accounts . . . . .	56,131	66,589
TOTAL . . . . .	6,65,60,519	6,68,77,134

## APPENDIX XI.

## PRINCIPAL STEAMER SERVICES.

*By the British India Steam Navigation Company*

- (1) Direct communication three times a week between Calcutta and Rangoon.
- (2) Weekly communication between Chittagong, Akyab, Kyaukpyu, Sandoway (during fair season only) and Rangoon
- (3) Weekly communication (during fair season only) between Chittagong, Akyab and Rangoon
- (4) Weekly direct communication between Madras and Rangoon.
- (5) Weekly communication between Rangoon, Tavoy and Mergui
- (6) Fortnightly communication between Moulmein, Yeu, Tavoy, Mergui, Victoria Point and Penang.
- (7) Fortnightly communication between Rangoon, Tavoy, Palaw, Mergui, Kamaw, Bokpyin, Karathuri, Victoria Point and Malwun.
- (8) Weekly direct communication between Bombay and Karachi.
- (9) Weekly communication between Bombay and Karachi *via* the Coast Ports.
- (10) Weekly communication between Karachi and Basra *via* the *principal* Persian Gulf ports.
- (11) Fortnightly communication between Karachi and Basra *via* the Persian Gulf ports.
- (12) Fortnightly communication between Karachi and Bushire *via* the Persian Gulf ports
- (13) Weekly communication from Negapatam to the Straits (Temporarily fortnightly).
- (14) Direct weekly communication between Rangoon and Penang.
- (15) Fortnightly communication between Bombay, Mombasa, Zanzibar, Beira, Delagoa Bay and Durban with calls on the outward voyage every four weeks at the Seychelles, Mozambique and Dar-es-Salaam.
- (16) Additional services between any of the ports served by the above-mentioned lines and between any of the ports on the Coromandal Coast and Rangoon

Under contract with the Post Office from 1st February, 1913 to 31st January, 1934, on an annual subsidy of Rs 10,12,000 and under fresh contract with the Post Office from 1st February, 1924, on an annual subsidy of Rs 15,18,000 for the same services except No. (7) which has been abolished.

*By the Asiatic Steam Navigation Company.*

- (17) Six-weekly communication between Calcutta and Port Blair, with extensions to Madras and Rangoon.

No present contract with the Post Office, the mail service being performed under special arrangements made by Government.

APPENDIX XI—*contd.*PRINCIPAL STEAMER SERVICES—*contd.**By the Irrawaddy Flotilla Company, Limited*

- (13) Communication three times a week between Rangoon and Bassein.
- (19) Daily communication (Sundays excepted) between Bassein and Myaungmya
- (20) Daily communication (Saturdays excepted on the up trip and Mondays excepted on the down trip) between Prome, Thayetmyo, Minbu and Yenemgyeung.
- (21) Communication twice a week between Thayetmyo and Pakokku
- (22) Daily communication (Mondays excepted) between Yenemgyeung, Sale and Singu.
- (23) Daily communication (Sundays excepted) between Sale and Pakokku
- (24) Daily communication (Sundays excepted) between Myingyan and Pakokku.
- (25) Weekly communication between Pakokku and Pantha.
- (26) Weekly communication (provided the depth of the water permits) between Pantha and Homalin.
- (27) Daily communication between Katha and Bhamo.
- (28) Daily communication between Rangoon and Kyauktan.
- (29) Daily communication between Kyauktan and Thongwa.
- (30) Daily communication between Rangoon and Pyapon.
- (31) Daily communication (Sundays excepted) between Yandoon and Pyapon.
- (32) Daily communication (Sundays excepted) between Wakema and Myaungmya.
- (33) Daily communication (Sundays excepted) between Myaungmya and Moulmeingyun.
- (34) Daily communication (Sundays excepted) between Wakema and Moulmeingyun.
- (35) Daily communication (Sundays excepted) between Wakema and Kyonmangne
- (36) Daily communication (Sundays excepted) between Yandoon and Moulmeingyun.
- (37) Daily communication (Sundays excepted) between Myaungmya and Eime
- (38) Daily communication (Sundays excepted) between Kyauklat and Kyawzan.
- (39) Daily communication (Sundays excepted) between Henzada and Yandoon, *via* Zalum, Apyauk and Daunbyu
- (40) Daily communication between Prome and Henzada.
- (41) Daily communication (Sundays excepted) between Moulmein and Kya-in
- (42) Daily communication (Sundays excepted on the up trip and Mondays excepted on the down trip) between Moulmein and Kyondo.
- (43) Daily communication between Moulmein and Kado

Under contract with the Burma Government for a period of six years from 1st January 1914 or until determined by notice by either of the contracting parties. The annual subsidy is Rs. 1,86,140, of which Rs. 58,832 is paid by the Post Office.

## APPENDIX XI—concl'd.

## PRINCIPAL STEAMER SERVICES—concl'd.

*By the Irrawaddy Flotilla Company, Limited—cont'd.*

- |   |   |   |
|---|---|---|
| <p>(44) Daily communication between Moulmein and Natmaw.</p> <p>(45) Daily communication (Sundays excepted on the up trip and Mondays excepted on the down trip) between Moulmein and Shwegun.</p> <p>(43) Communication three times a week between Bassein Ngaputaw and Pyinkayaing.</p> | } | <p>Under contract with the Burma Government for a period of six years from 1st January 1914 or until determined by notice by either of the contracting parties. The annual subsidy is Rs. 1,86,140, of which Rs. 58,882 is paid by the Post Office.</p> |
|---|---|---|

*By the Arracan Company, Limited.*

- |   |   |   |
|---|---|---|
| <p>(47) Communication three times a week between Akyab and Burhidaung.</p> <p>(48) Communication twice a week between Akyab and Paletwa via Pannagyun and Kyauktaw.</p> <p>(49) Communication twice a week between Akyab and Kyauktaw via Myohaung.</p> <p>(50) Communication once a week between Akyab and Myaungbwe via Sunye.</p> <p>(51) Weekly communication between Akyab and Sakenmaw via Myebon and Kyaukpyu.</p> <p>(52) Weekly communication between Akyab and Kyaukpyu.</p> <p>(53) Weekly communication between Kyaukpyu and Cheduba via Ramree.</p> <p>(54) Weekly communication between Sandoway and Kyaukpyu via Ranree and Taungup.</p> <p>(55) Weekly communication between Kyaukpyu and Sandoway.</p> | } | <p>Under contract with the Burma Government. The annual subsidy Rs 1,05,200, of which Rs. 1,200 is paid by the Post Office.</p> |
|---|---|---|

*By the British India Steam Navigation Company and the Indo-China Steam Navigation Company.*

- |  |   |   |
|--|---|---|
| <p>(56) Communication at irregular intervals between Calcutta and the Straits Settlements and Hong Kong.</p> | } | <p>The consideration is not in the form of a money subsidy but of a guarantee of certain concessions.</p> |
|--|---|---|

*By other Agencies.*

- |   |   |   |
|---|---|---|
| <p>(57) By the Bombay Steam Navigation Company—Daily communication between Bombay and Goa.</p>  | } | <p>Under contract with the Post Office from the 1st October to the 31st May each year. The monthly subsidy paid by the Post Office is Rs. 4,500, towards which the Government of Portuguese India contribute Rs. 200. This subsidy was temporarily reduced to Rs 4 000 during the year.</p> |
| <p>(58) By Mr. Trikamjee Jiwandas, Bombay—Daily communication between Rozi Bandar and Tuna Bandar.</p>  | } | <p>Under contract with the Post Office on a monthly subsidy of Rs. 2,000.</p>   |
| <p>(59) By Messrs Cowasjee, Dinshaw and Brothers.—Weekly communication between Aden, Bebera and Zeyla</p>   | } | <p>The contract, which was with the Government of the Somaliland Protectorate, expired on the 31st March 1918, and has not since been renewed. Mails were, however, conveyed regularly during the year under report by the steamers of the Company.</p>                                     |
| <p>(60) By the Retriever Flotilla Company—Communication four times a week between Chittagong and Cox's Bazar, and also between Cox's Bazar and Maungdow during fair season only (provided weather permits).</p> | } | <p>Under contract with the Post Office from 1st January 1914 and terminable at six months' notice. Subsidy Rs. 6,600 a year.</p>  |

## APPENDIX XII.

The total number of sent telegrams, the total number of signalling operations entailed in their despatch from the office of origin to destination, with the necessary repetition at intermediate offices, and the average number of signalling operations per sent telegram, for the last five years

Year.	Total number of sent telegrams paid and free.	Total number of signalling operations.	Average number of signalling operations per sent telegram.
1919-20 . . . . .	20,275,352	91,521,427	4.51
1920-21 . . . . .	19,893,162	90,447,162	4.54
1921-22 . . . . .	20,611,459	93,698,296	4.54
1922-23 . . . . .	19,250,961	87,491,936	4.54
1923-24 . . . . .	19,090,236	87,192,276	4.56

## APPENDIX XIII.

News-free and concessional message traffic during 1923-24.

Particulars.	1922-23.		1923-24.	
	Number.	<i>Pro forma</i> value.	Number.	<i>Pro forma</i> value
		Rs.		Rs.
French Government Service . . . . .	747	2,430	978	3,293
Portuguese Government Service . . . . .	5,014	17,055	4,627	16,660
Kalat State . . . . .	...	...	...	...
Kashmir State . . . . .	10,032	28,113	9,533	22,315
British Indian and Colonial Government . . . . .	26,791*	1,38,925*	19,125*	78,686*
On His Majesty's Service (Free State messages, . . . . .)	310,041	12,58,735	5,589†	31,272†
TOTAL . . . . .	352,625	14,45,258	39,852	1,52,226

Represents half the total number and value of British Indian and Colonial Government telegrams.

†Figures for the month of April 1923. The revised system of supply of books of O. H. M. S. forms for Inland State telegrams on payment came into force with effect from 1st May 1923.

## APPEN

STATISTICS OF  
(1) Inland

Particulars	STATE.				PRIVATE.			
	EXPRESS.		ORDINARY.		EXPRESS.		ORDINARY.	
	Number.	Receipts.	Number.	Receipts.	Number.	Receipts.	Number.	Receipts.
		Rs. A.		Rs. A.		Rs. A.		Rs. A.
1923-24 . . . . .	199,757	7,69,218 7	1,028,170	14,72,975 0	2,629,543	62,83,250 15	11,918,314	1,11,11,612 15
1922-23 . . . . .	208,764	7,72,597 2	1,079,578	15,46,608 15	2,761,346	55,68,195 5	11,311,392	1,03,21,700 4
Increase . . . . .	...	...	...	...	...	...	606,922	7,89,912 11
Decrease . . . . .	9,087	3,368 11	51,408	73,628 15	1,31,803	2,84,944 6	...	...
Percentage of increase . . . . .	...	...	...	..	...	..	5'36	7'65
Percentage of decrease . . . . .	4'32	0'43	4'76	4'76	4'77	5'11	..	...
Percentage on total of each class for 1923-24.	16'27	34'31	83'73	65'69	19'08	32'23	81'92	67'77
Percentage on total of each class for 1922-23.	16'21	33'31	83'79	66'69	19'62	35'04	80'38	64'96

(a) Inclusive of Rs. 3,72,808 on account of Abbreviated Addresses  
(b) Inclusive of Rs. 2,97,696-9-0 on account of Abbreviated Addresses

## DIX XIV.

## TELEGRAMS.

## Telegrams.

RAJ.				PRESS.				GRAND TOTAL.	
EXPRESS.		ORDINARY.		EXPRESS.		ORDINARY.		Number.	Receipts.
Number.	Receipts.	Number.	Receipts.	Number.	Receipts.	Number.	Receipts.		
	Rs. A.		Rs. A.		Rs. A.		Rs. A.		Rs. A.
8,166	26,079 5	30,447	41,964 2	135,744	1,62,122 11	309,576	2,09,028 6	16,259,737	1,91,69,152 13 (a)
5,361	18,933 13	11,152	16,031 0	164,701	1,66,419 12	311,461	3,21,141 6	15,853,775	1,87,31,612 9 (b)
2,835	9,145 8	10,205	25,934 2				...	405,962	4,37,540 4
...	..	..	..	28,957	4,297 1	1,865	21,213 0		
52 98	48 30	173 01	161 77				..	2 56	2 33
...	...	...	...	17 58	2 58	0 60	6 60	.	
21 19	40 00	78 61	59 01	30 48	35 09	69 52	64 61	..	
32 42	54 15	67 58	45 85	34 59	34 12	65 41	65 37	.	

and exclusive of Rs. 4,79,367-12-0 on account of Debit adjustments.  
and exclusive of Rs. 5,76,638-9-0 on account of Debit adjustments.



**APPENDIX XIV.**  
**(2) Inland Telegraphic Money Orders.**

Particulars.	EXPRESS.		ORDINARY.		GRAND TOTAL.	
	Number.	Telegraph charges.	Number.	Telegraph charges.	Num bcr.	Telegraph charges.
		Rs. A.		Rs. A.		Rs. A.
1923-24 . . . . .	28,872	52,938 0	840,828	6,09,976 14	878,200	6,62,952 14
1922-23 . . . . .	24,994	46,789 0	745,155	6,06,355 0	770,149	6,53,140 0
Increase . . . . .	3,878	6,147 0	105,673	98,621 14	108,051	99,788 14
Decrease . . . . .	..	..	..	..	..	..

**(3) Foreign Telegrams.**

Particulars.	STATE.			PRIVATE.								
	Number.	Words	Indian share of value.	ORDINARY.			DEFERRED.			DAILY LETTER TELEGRAM*.		
				Number.	Words.	Indian share of value.	Number.	Words.	Indian share of value.	Number.	Words.	Indian share of value.
			Rs. A.			Rs. A.			Rs. A.			Rs. A.
1923-24 . . . . .	19,848	563,180	1,00,667 4	2,147,249	18,342,153	35,60,067 1	3,84,094	5,208,967	5,28,474 5	25,048	641,477	29,688 7
1922-23 . . . . .	33,685	10,10,178	1,46,648 2	2,391,143	25,662,265	40,12,204 6	3,71,480	5,020,312	4,58,109 14	..	..	..
Increase . . . . .	..	..	..	..	..	..	12,614	188,655	70,364 7	25,048	641,477	29,688 7
Decrease . . . . .	13,830	456,998	45,180 14	243,895	7,210,132	4,63,137 5	..	..	..	..	..	..
Percentage of increase . . . . .	40 61	44 83	30 97	10 19	28 21	11 28	3 39	3 75	15 42	..	..	..
Percentage of decrease . . . . .	..	..	..	..	..	..	..	..	..	..	..	..

Particulars.	PRIVATE.			PRESS.			GRAND TOTAL.		
	URGENT (AT TRIPLE RATE).			Number.	Words.	Indian share of value.	Number.	Words.	Indian share of value.
	Number.	Words.	Indian share of value.						
			Rs. A.			Rs. A.			Rs. A.
1923-24 . . . . .	183,748	1,416,327	8,31,994 2	30,963	990,993	52,828 4	2,790,647	27,151,806	60,91,719 7
1922-23 . . . . .	219,781	1,027,534	9,04,776 9	28,592	1,606,978	60,519 14	3,044,561	35,216,286	66,79,468 13
Increase . . . . .	..	..	..	2,371	..	..	..	..	..
Decrease . . . . .	36,413	511,207	83,782 7	..	716,985	7,691 10	253,914	8,064,299	4,87,739 6
Percentage of increase . . . . .	..	..	..	8 29	..	..	..	..	..
Percentage of decrease . . . . .	18 56	26 53	9 14	..	43 19	12 70	8 33	22 69	8 74

*N.B.*—The number and value of Press telegrams shown above relate 'only to those sent from and to India, and those for Transit Press telegrams are included under the head "Private-Ordinary."  
The number and value of Indo-Ceylon State messages are included under the head "Private-Ordinary."  
\*Introduced with effect from 1st October 1923.

APPENDIX XIV.

(4) Foreign Telegraphic Money Order 'Advices.

Name of countries with which the advices were exchanged	1922-23.						1923-24					
	OUTGOING		INCOMING.		TOTAL.		OUTGOING		INCOMING		TOTAL.	
	Number.	Tele-graph charges.	Number	Tele-graph charges.	Number	Tele-graph charges.	Number.	Tele-graph charges	Number.	*Tele-graph charges	Number	Tele-graph charges.
		Rs.		Rs.		Rs		Rs.		Rs.		Rs.
Ceylon	5,330	6,401	58,454	44,513	63,784	50,914	7,798	11,054	61,003	76,904	68,801	87,958
Iraq*	...	...	...	...	...	..	35	225	152	169	187	394
Persian Gulf	46	36	34	54	80	90	40	34	5	7	45	41
Aden	6	80	...	...	6	80	15	196	..	...	15	196
United Kingdom	2,134	27,004	1	2	2,135	27,006	2,611	30,088	3	6	2,614	30,094
Federated Malay States†	..	...	..	..	..	..	12	107	412	895	424	1,002
Seychelles	..	..	..	..	..	..	1	24	..	..	1	24
TOTAL	7,516	33,521	58,489	44,569	66,005	78,090	10,512	41,728	61,575	77,981	72,087	1,19,709
Percentage of increase	...	...	...	...	...	...	39.86	24.48	5.27	74.96	9.21	53.29
Percentage of decrease	...	...	...	...	...	...	...	...	...	...	...	...

\* Telegraphic Money Order service with Iraq resumed from 1st May 1923.

† Telegraphic Money Order service with the Federated Malay States was introduced with effect from the 1st June 1923.

## APPEN

## Growth of Telegraph Department and

Year.	MILES OF				NUMBERS OF OFFICERS.		
	Cable.	Wire in cable.	Line including cable.	Wire including cable.	Departmental.	Combined post and telegraph.	Total.
1854-55 . . . . .	.	..	3,255	3,314	48	...	48
1859-60 . . . . .	..	..	10,589	10,944	131	...	131
1864-65 . . . . .	...	...	13,258	14,137	174	...	174
1869-70 . . . . .	...	...	13,793	21,378	190	...	190
1874-75 . . . . .	...	...	16,155	33,347	216	...	216
1879-80 . . . . .	..	...	20,520	52,914	262	...	262
1884-85 . . . . .	...	..	25,387	75,115	254	287	521
1889-90 . . . . .	...	...	35,279	106,369	248	63	311
1894-95 . . . . .	...	...	44,648	138,526	253	1,109	1,363
1899-00 . . . . .	..	...	52,908	171,040	239	1,612	1,851
1904-05 . . . . .	.	..	61,684	227,740	272	1,917	2,189
1909-10 . . . . .	327	3,892	72,746	287,266	279	2,463	2,763
1914-15 . . . . .	465	9,135	84,124	330,033	209	3,199	3,408
1915-16 . . . . .	468	10,354	86,067	337,720	196	3,255	3,451
1916-17 . . . . .	492	11,310	87,480	343,487	94	3,332	3,526
1917-18 . . . . .	527	14,687	87,714	347,906	202	3,337	3,539
1918-19 . . . . .	546	16,119	87,814	357,472	185	3,398	3,553
1919-20 . . . . .	576	19,507	88,417	369,273	198	3,363	3,561
1920-21 . . . . .	606	22,898	89,711	367,395	184	3,4	3,584
1921-22 . . . . .	650	31,366	91,780	411,897	182	3,449	3,631
1922-23 . . . . .	780	44,428	92,792	438,365	179	3,479	3,658
1923-24 . . . . .	897	61,821	93,054	461,593	172	3,507	3,679

- (a) Inclusive of 80,560 State press telegrams, value Rs 44,609  
(b) Inclusive of 160,368 State press telegrams, value Rs. 75,952.  
(c) Inclusive of 135,941 State press telegrams, value Rs 72,936.  
(d) Inclusive of 96,975 State press telegrams, value Rs. 56,910.

DIX XV.

its operations from 1854-55 to 1923-24.

NUMBER OF PAID TELEGRAMS										Year
FOREIGN.			INLAND			TOTAL STATE.	TOTAL PRIVATE.	TOTAL PRESS.	GRAND TOTAL.	
State	Private.	Press.	State.	Private.	Press.					
...	...	...	..	..	..	..	..	..	...	1854-55
...	...	...	..	...	...	..	..	..	...	1859-60
...	...	...	..	...	...	..	..	..	...	1864-65
...	48,291	..	39,403	371,624	...	39,403	415,215	..	454,618	1869-70
1,805	100,338	...	77,226	658,522	...	76,531	754,654	4,206	837,391	1874-75
3,272	231,287	...	200,622	1,037,330	..	203,894	1,261,267	7,360	1,662,511	1879-80
6,088	359,352	877	286,966	1,351,618	12,906	283,054	1,711,170	13,873	2,018,097	1884-85
5,947	436,315	3,224	403,443	2,166,866	24,789	409,389	2,605,169	28,013	3,132,571	1889-90
6,804	564,202	3,094	535,571	3,205,353	26,202	532,375	3,769,555	29,296	4,391,226	1894-95
11,669	816,300	6,524	792,055	4,655,627	45,326	713,724	5,471,827	51,750	6,237,301	1899-00
16,942	990,477	8,022	891,170	7,241,710	40,024	818,112	8,332,187	48,048	9,068,345	1904-05
15,174	1,259,650	11,897	834,435	9,802,124	161,417	849,609	11,061,774	173,314	12,084,697	1909-10
35,668	1,214,500	21,159	1,651,930	13,034,315	232,774	1,687,618	14,248,915	283,933	16,190,366	1914-15
62,307	1,381,182	22,091	1,737,901	13,996,050	342,337	1,800,208	15,377,232	365,448	17,542,888	1915-16
84,068	1,603,427	27,670	1,741,891	14,999,720	273,040	1,825,979	16,593,147	300,710	18,719,836	1916-17
110,576	1,843,211	35,038	1,891,395	15,021,706	235,129	2,001,971	16,864,917	270,167	19,137,055	1917-18
139,018	2,000,775	36,176	2,047,950	15,878,590	225,559	2,186,968	17,879,305	261,735	20,328,068	1918-19
109,743	2,433,133	24,407	1,800,129	14,726,483	283,115	1,909,872	17,104,618	307,522	19,382,010	1919-20
73,796	2,656,654	25,814	1,428,087	14,607,259	261,271	1,502,783	17,263,913	288,055	19,054,781	1920-21
49,731	2,388,108	25,695	1,557,848	14,635,276	340,341	1,607,579	17,724,379	366,036	19,697,994	1921-22
33,585	2,982,384	26,592	1,288,372	14,069,341	476,162	1,321,957	17,071,625	504,764	18,898,336	1922-23
19,943	2,739,736	30,863	1,227,927	14,566,480	446,320	1,247,673	17,326,329	476,263	19,050,364	1923-24

(g) Inclusive of 71,434 State press telegrams, value Rs. 49,695.  
 (h) Inclusive of 116,796 State press telegrams, value Rs. 1,05,960.  
 (i) Inclusive of 97,030 State press telegrams, value Rs. 83,804.  
 (j) Inclusive of 117,840 State press telegrams, value Rs. 1,13,442.  
 (k) Inclusive of 272,676 State press telegrams, value Rs. 2,25,637.  
 (m) Inclusive of 196,944 State Press telegrams, value Rs. 1,58,782.

## APPEN

## Growth of Telegraph Department and

Year.	VALUE OF PAID					
	FOREIGN.			INLAND.		
	State.	Private.	Press.	State.	Private.	Press.
	Rs.	Rs.	Rs.	Rs.	Rs.	Rs.
1854-55 . . .	..	...	.	24,050	40,750	...
1859-60 . . .	...	.	...	1,16,080	4,10,210	...
1864-65 . . .	...	...	...	1,13,818	7,02,558	...
1869-70 . . .	...	2,55,253	.	1,36,760	7,38,987	..
1874-75 . . .	11,053	5,74,675	..	2,57,315	10,73,835	...
1879-80 . . .	40,232	9,70,800	...	11,86,636	15,32,853	...
1884-85 . . .	52,403	12,73,315	3,908	6,63,648	14,55,286	40,347
1889-90 . . .	45,244	17,38,047	18,175	9,46,586	21,90,087	79,213
1894-95 . . .	56,993	19,97,375	18,678	11,52,652	31,13,170	1,02,804
1899-00 . . .	80,922	21,14,782	32,286	16,63,062	42,59,720	1,57,503
1904-05 . . .	1,18,023	22,32,835	42,003	15,87,734	47,46,565	93,440
1909-10 . . .	54,599	21,21,235	39,173	7,71,556	54,72,633	1,68,363
1914-15 . . .	2,60,515	22,61,934	29,796	23,79,660	73,59,662	(a) 2,03,210
1915-16 . . .	4,98,560	26,24,380	30,000	23,39,430	79,25,254	(b) 2,67,612
1916-17 . . .	4,56,765	29,47,899	32,130	26,10,668	91,63,229	(c) 2,17,154
1917-18 . . .	5,77,864	37,09,976	36,711	28,30,893	1,06,20,073	(c) 2,11,557
1918-19 . . .	10,10,815	40,23,702	41,465	38,01,154	1,52,62,882	(g) 2,12,169
1919-20 . . .	10,60,928	75,46,003	32,860	43,62,337	1,66,34,020	(i) 3,30,888
1920-21 . . .	4,76,964	52,52,744	37,748	30,15,414	1,70,91,469	(k) 2,90,654
1921-22 . . .	2,71,315	55,45,387	50,230	29,67,821	1,71,03,793	(m) 3,93,934
1922-23 . . .	1,45,848	53,73,091	60,520	23,19,191	(e) 1,59,24,861	4,87,561
1923-24 . . .	1,00,667	49,38,224	52,828	22,42,194	(r) 1,64,64,908	4,62,061

(a) Inclusive of 89,560 State press telegrams, value Rs 44,609

(b) Inclusive of 159,398 State press telegrams, value Rs 75,652.

(c) Inclusive of 135,941 State press telegrams, value Rs 72,936.

(d) Exclusive of 232 Inland O. H. M. S. telegrams, value Rs 1,103, handed in at licensed telegraph offices.

(e) Inclusive of 96,075 State press telegrams, value Rs 58,610

(f) Exclusive of 5,448 Inland O. H. M. S. telegrams, value Rs. 23,615, handed in at licensed telegraph offices.

(g) Inclusive of 71,494 State press telegrams, value Rs 49,698

(h) Exclusive of 14,338 Inland O. H. M. S. telegrams, value Rs 51,920, handed in at licensed telegraph offices

(i) Inclusive of 116,769 State press telegrams, value Rs 1,05,060.

(j) Exclusive of 36,503 Inland O. H. M. S. telegrams, value Rs. 2,27,367, handed in at licensed telegraph offices.

(k) Inclusive of 97,030 State press telegrams, value Rs. 83,804.

## DIX XV—contd.

its operations from 1854-55 to 1923-24—contd.

TELEGRAMS.			GRAND TOTAL.	NEWS-FREE AND COMMONS- SIONAL TELEGRAMS.		Year.
TOTAL STATE.	TOTAL PRIVATE	TOTAL PRESS		Number.	Pro forma value.	
Rs.	Rs.	Rs.	Rs.		Rs.	
24,050	40,760	...	64,810	..		1854-55
1,15,989	4,10,210	..	5,26,199	...		1859-60
1,13,518	7,92,558		9,06,376	..	10,048	1864-65
1,36,760	9,94,220	...	11,30,980	3,565	35,400	1869-70
2,68,368	16,30,890	17,620	19,16,878	7,365	1,59,670	1874-75
12,35,668	24,61,164	51,468	37,48,530	3,856	1,13,973	1879-80
7,16,141	27,28,601	53,285	34,98,027	1,683	29,340	1884-85
9,01,830	39,37,134	97,388	50,26,352	2,464	45,363	1889-90
13,09,845	51,10,545	1,21,482	64,41,872	6,546	1,14,572	1894-95
17,43,984	63,74,511	1,89,788	63,08,263	9,282	1,36,767	1899-00
17,05,757	69,69,400	1,35,452	88,10,609	10,960	1,18,791	1904-05
8,28,155	75,03,888	2,07,536	86,27,559	217,096	1,81,799	1909-10
26,49,175	96,41,886	(a) 2,32,006	1,25,24,067	351,203	4,86,578	1914-15
28,37,990	1,04,40,634	(b) 2,97,612	1,35,95,236	586,960	6,15,187	1915-16
30,67,733	1,21,11,128	(c) 2,40,284	1,54,28,145	(d) 577,856	(e) 8,98,992	1916-17
34,08,757	1,44,20,049	(e) 2,48,268	1,80,77,074	(f) 760,732	(g) 13,99,121	1917-18
48,11,069	2,01,66,564	(g) 2,53,894	2,52,52,217	(h) 986,875	(i) 24,27,103	1918-19
54,52,263	2,41,80,023	(i) 3,63,748	2,99,96,034	(j) 893,342	(k) 29,55,049	1919-20
84,92,378	2,23,44,243	(k) 3,28,402	2,61,65,023	(l) 838,381	(m) 24,80,371	1920-21
32,39,136	2,26,40,179	(m) 4,44,173	2,63,32,488	(n) 913,465	(o) 25,73,267	1921-22
24,65,039	2,12,07,952	(p) 5,48,061	2,43,11,072	(q) 352,625	(r) 14,45,258	1922-23
23,42,861	2,14,03,132	(s) 5,14,879	2,42,60,672	(t) 39,852	(u) 1,52,226	1923-24

(l) Exclusive of 21,508 Inland O H M S telegrams, value Rs. 1,34,557, handed in at licensed telegraph offices

(m) Inclusive of 117,640 State press telegrams, value Rs. 1,13,442

(n) Exclusive of 12,538 Inland O H M S telegrams, value Rs. 80,849, handed in at licensed telegraph offices.

(o) Inclusive of 16,503 "Raj" telegrams, value Rs. 24,965

(p) Inclusive of 272,676 State press telegrams, value Rs. 225,637

(q) Exclusive of 6,894 Inland O H M S telegrams, value Rs. 43,944, handed in at licensed telegraph offices.

(r) Inclusive of 38,633 "Raj" telegrams, value Rs. 70,044

(s) Exclusive of 198,944 State press telegrams, value Rs. 163,722

(t) Exclusive of 1228 Inland O H M S telegrams, value Rs. 7,813 handed in at licensed telegraph offices prior to

1st May 1923. The marked decrease is due to the concession of sending free State telegrams on O. H. M. S. forms having been withdrawn from 1st May 1923.

## APPENDIX XV (a).

*Growth of Departmental Telephones from 1882 to 1923-24.*

Year.	Number of exchanges	Number of exchange connections.	Number of private line offices.	Gross rental.
				Rs.
1882 . . . . .	8	56	147	40,069
1883 . . . . .	12	92	148	47,131
1884 . . . . .	9	72	200	53,213
1885 . . . . .	8	71	257	61,443
1886 . . . . .	8	79	247	60,182
1887 . . . . .	11	105	195	58,118
1888 . . . . .	11	97	217	58,981
1889 . . . . .	13	103	203	64,871
1890 . . . . .	13	93	224	53,794
1891 . . . . .	16	141	260	64,618
1892 . . . . .	23	188	273	75,946
1893 . . . . .	26	205	320	87,749
1894 . . . . .	30	260	360	93,278
1895 . . . . .	31	265	394	1,06,511
1896 . . . . .	36	296	418	1,15,309
1897 . . . . .	41	357	454	1,35,194
1898 . . . . .	42	395	468	1,44,588
1899 . . . . .	43	421	511	1,54,133
1900 . . . . .	42	500	540	1,61,127
1901 . . . . .	41	550	576	1,62,044
1902 . . . . .	56	607	655	1,70,852
1903 . . . . .	64	786	677	1,95,692
1904 . . . . .	73	933	805	2,04,520
1905 . . . . .	84	1,161	824	2,32,866
1906 . . . . .	103	1,453	848	2,66,533

## APPENDIX XV (a).

SERVANTS OF INDIA SOCIETY  
BRANCH LIBRARY  
BOMBAY*Growth of Departmental Telephones from 1882 to 1923-24.*

Year.	Number of exchanges	Number of exchange connections	Number of private line offices	Gross rental.
				Rs.
1907 . . . . .	125	1,886	934	3,25,706
1908 . . . . .	142	2,414	1,007	4,06,946
1909 . . . . .	166	2,862	1,029	4,88,875
1910 . . . . .	167	2,982	1,228	5,37,045
1911 . . . . .	176	3,443	1,144	5,90,164
1912 . . . . .	183	4,313	1,248	6,76,356
1913 . . . . .	180	5,193	1,530	7,44,497
1914 . . . . .	175	5,768	1,580	8,54,435
1915 . . . . .	224	5,890	1,107	9,75,983
1916 . . . . .	226	6,511	1,115	10,56,625
1917 . . . . .	238	6,905	1,127	11,99,213
1918 . . . . .	241	7,066	1,047	12,41,115
1919 . . . . .	245	8,975	1,058	14,53,386
1920-21 . . . . .	255	10,703	1,092	14,84,417
1921-22 . . . . .	256	11,973	1,110	17,39,371
1922-23 . . . . .	227	13,320	1,157	25,17,224
1923-24 . . . . .	231	12,007	1,033	29,06,049



## APPENDIX XV (b).

*Growth of Telephones under licensed Companies at Calcutta, Madras, Bombay, Ahmedabad, Karachi, Rangoon and Moulmein, from 1882 to 1923-24.*

Year.	Number of connections.	Number of exchanges.	Gross rental.	
			Rs.	
1882 . . . . .	244	Information not recorded.	73,009	
1883 . . . . .	392		1,19,165	
1884 . . . . .	703		1,37,490	
1885 . . . . .	837		1,51,349	
1886 . . . . .	871		1,66,876	
1887 . . . . .	842		1,79,448	
1888 . . . . .	923		1,93,948	
1889 . . . . .	1,001		2,02,100	
1890 . . . . .	1,040		2,12,757	
1891 . . . . .	1,186		2,30,380	
1892 . . . . .	1,237		2,53,584	
1893 . . . . .	1,380		2,73,371	
1894 . . . . .	1,432		2,90,570	
1895 . . . . .	1,546		3,10,421	
1896 . . . . .	1,655		3,32,322	
1897 . . . . .	1,802		3,64,683	
1898 . . . . .	1,894		3,90,956	
1899 . . . . .	2,005		4,11,334	
1900 . . . . .	2,200		16	4,35,076
1901 . . . . .	2,294		16	4,63,843
1902 . . . . .	2,396	16	4,77,467	
1903 . . . . .	2,520	16	5,14,482	
1904 . . . . .	2,642	17	5,35,353	
1905 . . . . .	2,962	17	5,79,919	
1906 . . . . .	3,181	16	6,23,607	

## APPENDIX XV (b).

*Growth of Telephones under licensed Companies at Calcutta, Madras, Bombay, Ahmedabad, Karachi, Rangoon, and Moulmein, from 1882 to 1923-24.*

Year.	Number of connections.	Number of exchanges.	Gross rental.
			Rs.
1907 . . . . .	3,667	16	6,92,356
1908 . . . . .	3,883	16	8,04,571
1909 . . . . .	4,425	12	9,53,485
1910 . . . . .	5,185	12	11,12,324
1911 . . . . .	6,876	14	12,71,182
1912 . . . . .	7,899	13	14,53,906
1913 . . . . .	9,046	13	16,40,010
1914 . . . . .	9,710	11	17,45,875
1915 . . . . .	10,766	13	19,53,188
1916 . . . . .	12,894	13	23,63,685
1917 . . . . .	14,741	13	24,86,193
1918 . . . . .	15,653	13	25,77,513
1919 . . . . .	17,810	13	29,67,821
1920-21 . . . . .	20,335	11	34,91,264
1921-22 . . . . .	23,958	10	41,69,004
1922-23 . . . . .	25,590	12	48,52,532
1923-24 . . . . .	25,222	14	53,49,636

## APPENDIX XVI.

*Working expenses per telegram under signalling line maintenance and average value of a paid telegram from 1903-04 to 1923-24.*

Year.	Total number of paid telegrams in millions.	TOTAL WORKING EXPENSES IN LAKHS OF RUPEES.			WORKING EXPENSES PER TELEGRAM IN RUPEES.			Average value of a paid telegram.
		Line maintenance.	Signalling.	Total.	Line maintenance.	Signalling.	Total.	
1	2	3	4	5	6	7	8	9
1903-04	No 7·367	Rs. 17·80	Rs. 70·50	Rs. 88·10	Rs. ·241	Rs. ·964	Rs. 1 205	Rs. 1·100
1904-05	9·098	17·28	71·75	89·03	·190	·788	·978	968
1905-06	10·461	17·18	79·67	96·88	·165	·762	·927	·884
1906-07	11·385	18·40	86·91	105·31	·161	·763	·924	·836
1907-08	12·750	23·19	98·13	121·32	·182	·769	951	·786
1908-09	13·007	22·45	102·12	124·57	·172	·785	·957	·748
1909-10	12 084	21·76	102·44	124·20	·180	·847	1·027	·713
1910-11	13 090	22 68	99·73	122·41	·173	·762	·935	·707
1911-12	14·672	21·16	103 90	125·06	·144	·708	·852	·706
1912-13	15·449	25·67	104 66	130·33	·139	·677	·816	·696
1913-14	16·596	22·63	115·67	138·30	·136	·697	·833	·688
1914-15	16 190	22 93	118·29	141·22	·142	·731	·873	·774
1915-16	17·542	28·25	126·44	154·69	·161	·721	892	·774
1916-17	18·719	23·68	111·53	135·21	·127	·596	·723	·824
1917-18	19·137	22 46	105·05	127·51	·117	·549	·666	945
1918-19	20 328	27 50	121 29	148·79	·135	·597	·732	1·242
1919-20	19 382	29·94	136·31	166·25	·154	·703	·857	1·548
1920-21	19·055	39·59	175·54	215 13	·208	·921	1·129	1 373
1921-22	19 698	43·56	199·44	243 00	·221	1·012	1·233	1·337
1922-23	18·898	45·45	193·16	238·61	·240	1·022	1·262	1·286
1923-24	19·050	43·57	185·10	228 67	·229	·972	1·201	1·273

*N. B*—Charges not properly debitable to signalling are excluded. "Interest charges" are taken into account in calculating the working expenses connected with the handling of message traffic.

---

**APPENDIX XVII.**

---

## APPEN

## RECEIPTS, CHARGES AND GENERAL FINANCIAL

## Part I.—Receipts

RECEIPTS.	AMOUNTS.	
	Rs.	Rs.
<b>MESSAGE REVENUE—</b>		
Telegraph Department share of gross sale of ordinary stamps.	2,07,32,173	...
Receipts from other Telegraph Administrations . . . . .	4,00,731	...
Receipts from Bearing State messages, River Service, etc. . . . .	3,38,117	...
Telegraph charges realised in cash . . . . .	1,25,26,839	...
Total . . . . .	3,39,97,860	...
 <i>Deduct—</i>		
Payments to the Indo-European Telegraph Department . . . . .	12,93,220	...
Net payments to other Telegraph Administrations . . . . .	82,06,127	...
Refund of overcharges and payments of delivery charges . . . . .	4,73,653	...
<b>TOTAL DEDUCTION . . . . .</b>	99,73,003	...
<b>NET MESSAGE REVENUE . . . . .</b>	...	2,40,24,857
 <b>MISCELLANEOUS REVENUE—</b>		
Rent of wires and instruments leased to Railways and Canals.	37,40,413	...
Rent of Telephones . . . . .	25,13,254	...

## DIXXVII.

POSITION OF THE TELEGRAPH DEPARTMENT.  
and Charges.

CHARGES.		AMOUNT.	
		Rs.	Rs.
(A)—CHARGES SHOWN IN THE TELEGRAPH ACCOUNTS.			
CONTROL	Pay of officers . . . . .	6,84,719	
	Pay of permanent establishment . . . . .	5,17,160	
	Pay of temporary establishment . . . . .	6,476	
	Allowances, Honoraria, etc. . . . .	94,566	
	Apparatus and plant . . . . .	2,595	
	Other Supplies and Services . . . . .	287	
	Contingencies . . . . .	69,283	
		13,75,086	
<i>Deduct</i> —Share of establishment debitable to Telegraph Lines and Buildings.		2,80,088	
	NET CONTROL . . . . .	..	10,94,998
OFFICE OF ACCOUNT AND AUDIT.	Pay of officer . . . . .	59,263	
	Pay of permanent establishment . . . . .	5,11,258	
	Pay of temporary establishment . . . . .	21,867	
	Allowance, Honoraria, etc. . . . .	7,825	
	Apparatus and plant . . . . .	1,382	
	Other Supplies and Services . . . . .	18	
	Contingencies . . . . .	22,180	
	Maintenance and repairs of Buildings . . . . .	75	
		6,23,868	
<i>Deduct</i> —Indo-European Telegraph Share of Account Establishment		24,547	
<i>Share of Establishment debitable to Telegraph Lines and Buildings.</i>		6,609	
	NET ACCOUNT AND AUDIT . . . . .	93,149	5,30,719
PRESIDENCY AND DISTRICT OFFICES.	Pay of officers . . . . .	1,61,825	
	Pay of permanent establishment . . . . .	92,40,137	
	Pay of temporary establishment . . . . .	1,01,244	
	Allowances, Honoraria, etc. . . . .	19,60,078	
	Apparatus and plant . . . . .	8,17,597	
	Maintenance and repairs of buildings, Telegraph Lines, etc . . . . .	1,03,297	
	Contingencies . . . . .	5,35,602	..
	Subsidies and payments . . . . .	1,66,140	
	TOTAL PRESIDENCY AND DISTRICT OFFICES . . . . .	..	1,30,85,802
STORE AND WORKSHOP ESTABLISHMENT.	Pay of officers . . . . .	40,590	
	Pay of permanent establishment . . . . .	2,92,161	
	Pay of temporary establishment . . . . .	3,476	
	Allowances, Honoraria, etc. . . . .	26,801	
	Apparatus and plant . . . . .	6,846	
	Contingencies . . . . .	6,39,696	
	Stores . . . . .	2,93,117	
		13,02,703	
<i>Deduct</i> —Percentage realised on stores issued to other Departments		53,076	
<i>Share of store contingencies chargeable to Telegraph Lines</i>		1,16,233	
<i>Share of Workshop Establishment chargeable to manufacture.</i>		84,638	
<i>Share of repairs to plant and machinery . . . . .</i>		2,172	
<i>Share of Workshop Contingencies chargeable to Machinery</i>		58,647	
<i>Amount chargeable to other Departments . . . . .</i>		..	
	NET STORE AND WORKSHOP ESTABLISHMENTS . . . . .	3,14,766	
			9,87,937

## APPEN

## RECEIPTS AND CHARGES, AND GENERAL FINANCIAL

## Part I.—Receipts and

RECEIPTS.	AMOUNTS.	
	Rs.	Rs.
OTHER RECEIPTS—		
Royalties from Telephone Companies . . . . .	2,65,712	
Recoveries from Guarantors . . . . .	1,45,168	
Trunk Telephone call fees . . . . .	4,11,094	
Sale of Books, Forms, and Maps . . . . .	—2,073	
Sale of "Telegraph Gazette" . . . . .	20,125	
Wireless Branch—Fees and Royalties . . . . .	4,997	
Other Items . . . . .	1,52,938	
TOTAL MISCELLANEOUS REVENUE . . . . .	...	72,51,628
TOTAL RECEIPTS AS PER TELEGRAPH ACCOUNTS . . . . .	...	3,12,76,485

## Part II.—General

RECEIPTS.	CREDIT ITEMS.	
	1922-23	1923-24.
Telegraph Accounts . . . . .	3,10,01,411	3,12,76,485
ADJUSTMENTS.		
(a) News-free messages . . . . .	43,994	} 1,52,226
(b) Concessions to French and Portuguese India, etc. . . . .	14,45,258	
(c) Rent of Telegraph Buildings realised and paid to the Public Works Department. . . . .	1,905	
Total . . . . .	3,24,92,5. 8	3,14,28,711
LESS DEBIT TOTAL . . . . .	3,16,16,787	3,07,33,024
NET SURPLUS . . . . .	8,75,781	6,95,687

## DIX XVII—contd.

## POSITION OF THE TELEGRAPH DEPARTMENT.

## Charges—contd.

CHARGES.		AMOUNT.	
		Rs.	Rs.
STATIONERY AND PRINTING.	Stationery supplied by Superintendent, Government Printing.	79,724	
	Stationery supplied from Central Stores . . . . .	1,49,132	
	Stationery purchased and manufactured in the country.	21,449	
	Printing at Government presses . . . . .	1,52,865	
	Printing at jail and private presses . . . . .	4,047	
TOTAL STATIONERY AND PRINTING . . . . .			4,07,217
MAINTENANCE OF TELEGRAPH LINES.	Pay of officers . . . . .	4,61,026	
	Pay of permanent establishment . . . . .	28,70,226	
	Pay of temporary establishment . . . . .	46,538	
	Allowances, Honoraria, etc. . . . .	7,44,876	
	Apparatus and plant . . . . .	12,731	
	Contingencies . . . . .	1,46,273	
Maintenance and repairs of buildings, Telegraph Lines, etc. . . . .		17,40,729	
		60,22,399.	
Deduct—Amount chargeable to other Departments . . . . .		15,579	
Share of establishment debitable to Telegraph Lines and Buildings. . . . .		3,43,697	
		3,64,276	
NET MAINTENANCE OF TELEGRAPH LINES . . . . .			56,58,123
MISCELLANEOUS—(Cost of ordinary and service stamps) . . . . .			6,214
Interest on debt . . . . .			63,83,919
Superannuation allowances and pensions . . . . .		...	6,34,247
TOTAL CHARGES AS PER TELEGRAPH ACCOUNTS . . . . .		..	2,87,89,176
(B)—CHARGES NOT SHOWN IN THE TELEGRAPH ACCOUNTS BUT DEBITED TO TELEGRAPHS IN THE FINANCE AND REVENUE ACCOUNTS.			
Absentee allowance . . . . .			5,72,074
GRAND TOTAL . . . . .			2,93,61,250

## Financial Position.

CHARGES.	DEBIT ITEMS.	
	1922-23.	1923-24.
	Rs.	Rs.
Telegraph Accounts . . . . .	2,86,08,787	2,87,89,176
Finance and Revenue Accounts . . . . .	2,09,704	5,72,074
ADJUSTMENTS.		
(a) Pensions . . . . .	9,78,766	...
(b) Commutations of Pensions . . . . .	9,315	...
(c) Gratuities . . . . .	1,236	...
(d) Absentee allowances not included in the Finance and Revenue Accounts . . . . .	14,359	10,500
(e) Interest charges on the capital outlay charged to Revenue of the Telegraph Department. . . . .	17,94,620	13,61,274
TOTAL . . . . .	3,16,16,787	3,07,33,024



APPENDIX XVII—*concl'd.*

## RECEIPTS, CHARGES AND GENERAL FINANCIAL POSITION OF THE TELEGRAPH DEPARTMENT.

*Part III.—Capital Outlay.*

	AMOUNT.	
	1922-23.	1923-24.
I.—Indian Expenditure—	Rs.	Rs.
Telegraph Lines . . . . .	57,70,981	46,45,954
Telegraph Buildings . . . . .	—12,29,974	10,27,339
Apparatus and Plant . . . . .	19,67,460	16,63,977
Purchase of Stores in India, etc. . . . .	26,08,833	13,23,749
Share of Establishment charges, etc. . . . .	11,26,582	9,03,452
Other additions of capital nature . . . . .	47,759	...
Replacements . . . . .	—49	48
Tools and Plants . . . . .	5,731	17,110
	1,02,97,421	95,81,629
<i>Deduct</i> —Value of stores issued to Capital . . . . .	63,93,124	53,48,416
Credits for issue of stores to Working Expenses. . . . .	17,99,780	19,87,777
Credits for sales and issues to other Departments. . . . .	4,46,613	4,93,527
Receipts from capital Account . . . . .	...	5,980
	86,39,517	78,15,700
<b>TOTAL INDIAN EXPENDITURE</b>	<b>16,57,904</b>	<b>17,65,929</b>
II.—Expenditure in England—		
Cost and freight of stores . . . . .	58,52,376	17,66,312
<b>GRAND TOTAL</b>	<b>75,10,280</b>	<b>35,32,241</b>

---

**APPENDIX XVIII.**

---



**DIX XVIII.**

*Telegraph Department on the 31st March 1923 and the 31st March 1924.*

-ras.	Punjab and North-West Frontier.		United Provinces.		Sind and Baluchistan.		Sorting Circles.		Engineering Circles.		Telegraph Stores and Workshops.		Wireless Section.		Officers on deputation.		TOTAL.	
	1924.	1923.	1924.	1923.	1923.	1924.	1923.	1924.	1923.	1924.	1923.	1924.	1923.	1924.	1923.	1924.	1923.	1924.
...	...	...	...	...	...	...	...	...	...	...	...	...	...	...	...	...	1	1
...	...	...	...	...	...	...	...	...	...	...	...	...	...	...	...	...	1	1
1	1	1	1	1	.	.	.	.	.	.	.	.	.	.	.	.	10	10
...	...	...	...	...	...	...	...	...	...	...	...	...	...	...	...	...	1	1
...	...	...	...	...	...	...	...	...	5	5	.	.	.	.	.	.	7	7
...	...	...	...	...	...	...	...	...	...	...	...	...	...	...	...	...	1	1
2	2	2	1	1	...	1	3	3	..	.	..	.	.	.	.	.	19	20
2	1	1	1	1	*	.	.	.	..	...	.	.	.	.	.	.	13	13
...	...	...	...	...	...	...	...	...	36	41	1	2	..	..	1	3	41	48
...	...	...	...	...	...	...	...	...	...	...	...	...	2	3	.	.	3	5
...	...	...	...	...	...	...	...	...	...	...	2	2	...	...	...	...	2	2
...	...	...	1	1	...	...	...	...	...	...	...	...	...	...	...	...	1	1
...	...	...	...	...	...	...	...	...	12	8	14	14	...	...	...	...	26	23
...	...	...	...	...	...	...	...	...	...	...	...	...	...	...	...	...	1	1
...	...	...	...	...	...	...	...	...	...	...	...	...	...	...	...	...	6	5

\* Wrongly shown as 1 in last year's statement.

## APPEN

Statement showing the number of persons employed in the Post Office and Telegraph

	Direction		Office of Accounts.		Bengal and Assam.		Bihar and Orissa.		Bombay.		Burma.		Central.		Mad.
	1923	1924	1923	1924	1923.	1924.	1923.	1924.	1923.	1924.	1923.	1924.	1923.	1924.	
14. Assistant Accountant-General, and Assistant Accounts Officers.	...	...	11	9	...	...	...	...	...	...	...	...	...	...	...
15. Superintendents, Probationary Superintendents, Inspectors of Post Offices and Head Clerks to Superintendents of Post Offices.	...	..	..	..	113	114	40	47	86	82	23	33	53	52	97
16. Assistant to the Deputy Director-General, Telegraph Traffic, Superintendents of Telegraph Traffic, Superintendents-in-charge of Agra, Karachi, Lahore, Delhi or Simla, Lucknow, Allahabad, Ahmedabad and Bawalpindi Telegraphs offices and Assistant Superintendents, Calcutta and Bombay, Telegraph offices.	1	1	..	..	7	7	1	...	5	5	3	3	2	1	4
16(a). Deputy Superintendents, Telegraph Traffic.	...	..	..	..	9	9	2	2	11	11	5	5	4	4	11
17. Deputy Assistant Engineer, Telegraph Engineering, including Personal Assistants to Director, Telegraph Engineering, Deputy Assistant Engineers employed under Controller of Telegraph Stores and Assistant Electricians.	2	4	...	..	..	..	...	...	...	...	...	...	...	...	...
17(a). Deputy Assistant Engineers (Wireless) and Instrument makers (Wireless)..	...	...	..	..	..	..	..	...	...	...	...	...	...	...	...
18. Postmasters, including Presidency Postmasters and Deputy Assistant, Sub-Branch Postmasters and Clerks, Accountants, etc	...	...	..	..	5,104	5,083	1,514	1,526	790	3,683	1,530	1,344	674	1,526	3,941
19. Extra Departmental Agents, (School Masters, Station Masters, etc) in charge of Post Offices.	...	..	...	..	2,268	2,275	649	657	1,866	2,026	46	48	1,168	1,132	3,626
20(a). Signalling Establishments in Departmental Telegraph Offices including Telegraph Masters, Civil and Military Telegraphists.	...	...	...	...	634	654	74	71	666	659	298	296	172	169	555

DIX XVIII—contd.

Department on the 31st March 1923 and the 31st March 1924—contd.

ras.	Punjab and North-West Frontier.		United Provinces.		Sind and Baluchistan.		Sorting Circles.		Engineering Circles.		Telegraph Stores and Workshops.		Wireless Sections.		Officers on deputation.		TOTAL.		
	1924.	1923.	1924.	1923.	1924.	1923.	1924.	1923.	1924.	1923.	1924.	1923.	1924.	1923.	1924.	1923.	1924.	1923.	1924.
...	...	...	...	...	.	...	.	..	..	..	..	.	..	..	..	..	..	11	9
88	80	89	78	77	13	13	148	149	.	.	..	..	.	.	6	4	766	758	
4	6	6	5	5	2	2	.	...	.	...	..	..	..	..	...	...	36	35	
11	4	4	5	5	3	3	.	.	..	...	..	.	.	.	.	.	54	54	
..	..	..	...	..	..	...	..	...	86	86	8	9	..	.	2	2	98	101	
...	...	...	.	...	...	...	...	...	..	..	..	.	11	11	..	..	11	11	
3,469	987	3,270	221	3,601	165	563	1,521	4,775	.	...	..	..	...	..	10	5	16,337	27,845	
2,693	2,328	2,265	1,474	1,480	206	201	.	...	..	...	...	.	..	...	...	.	12,729	12,777	
545	556	525	481	482	140	156	..	..	..	...	.	.	..	..	9	6	3,595	3,558	

## Statement showing the number of persons employed in the Post Office and Telegraphs

	Direction..		Office of Accounts.		Bengal and Assam.		Bihar and Orissa.		Bombay..		Burma..		Central.		Mad..
	1923.	1924.	1923.	1924.	1923.	1924.	1923.	1924.	1923.	1924.	1923.	1924.	1923.	1924.	1923.
20(b). Electrical and Engineering Supervisors, Indian Inspecting Telegraphists, Telephone Supervisors, Assistant Supervisors and Inspectors	..	7	..	..	..	..	..	..	..	..	..	..	..	..	..
20(c). Supervising staff and operating staff of wireless stations including those attached to Wireless Divisions, viz., Military Mechanists [other than Deputy Assistant Engineers (Wireless)] Supervisors, Wireless, Mechanists, Electricians, Extra Military Operators, Extra Service Operators, Civil Telegraphists, Military Telegraphists (employed on wireless stations)	..	..	..	..	..	..	..	..	..	..	..	..	..	..	..
21. Clerks (including Telegraph Operators) Accountants and all other superior servants of the Post Office and Telegraph Department not referred to in the preceding items, Establishment of the Director General's Office, the Account's Office, Post and Telegraph Workshops and the Offices of the Postmaster General, Director, Telegraph Engineering, etc.	218	270	2,238	2,280	..	..	..	..	3,464	532	..	212	1,026	112	..
22. Road establishments of the Post Office including overseers, runners, boatmen, syces, coachmen, etc.	..	..	..	4,074	4,040	1,922	1,893	1,679	1,713	203	204	2,085	2,030	5,067	..
23. Postmen, village Postmen and inferior servants of the Post Offices not referred to in other items.	160	163	146	145	8,058	7,994	2,592	2,613	6,739	6,908	1,796	1,780	2,973	2,922	7,075
24. Telegraph Line maintenance establishment.	..	..	..	..	..	..	..	..	..	..	..	..	..	..	..
25. Telegraph Peons, Messengers in combined offices and all other inferior servants of the Telegraph Department not referred to in other items including those in Administrative and combined offices.	..	..	..	750	747	31	30	629	642	314	317	181	111	261	..
26. Superintendents, Motor Service and Motor Engineering.	..	..	..	..	..	..	..	..	..	..	..	..	..	..	..
27. Research and Traffic Officers, Wireless Division.	25	..	..	..	..	..	..	..	..	..	..	..	..	..	..
<b>TOTAL</b>	<b>403</b>	<b>465</b>	<b>2,392</b>	<b>2,300</b>	<b>21,021</b>	<b>20,929</b>	<b>6,836</b>	<b>6,841</b>	<b>16,090</b>	<b>16,266</b>	<b>4,230</b>	<b>4,227</b>	<b>8,270</b>	<b>8,063</b>	<b>17,872</b>

DIX XVIII—concl'd.

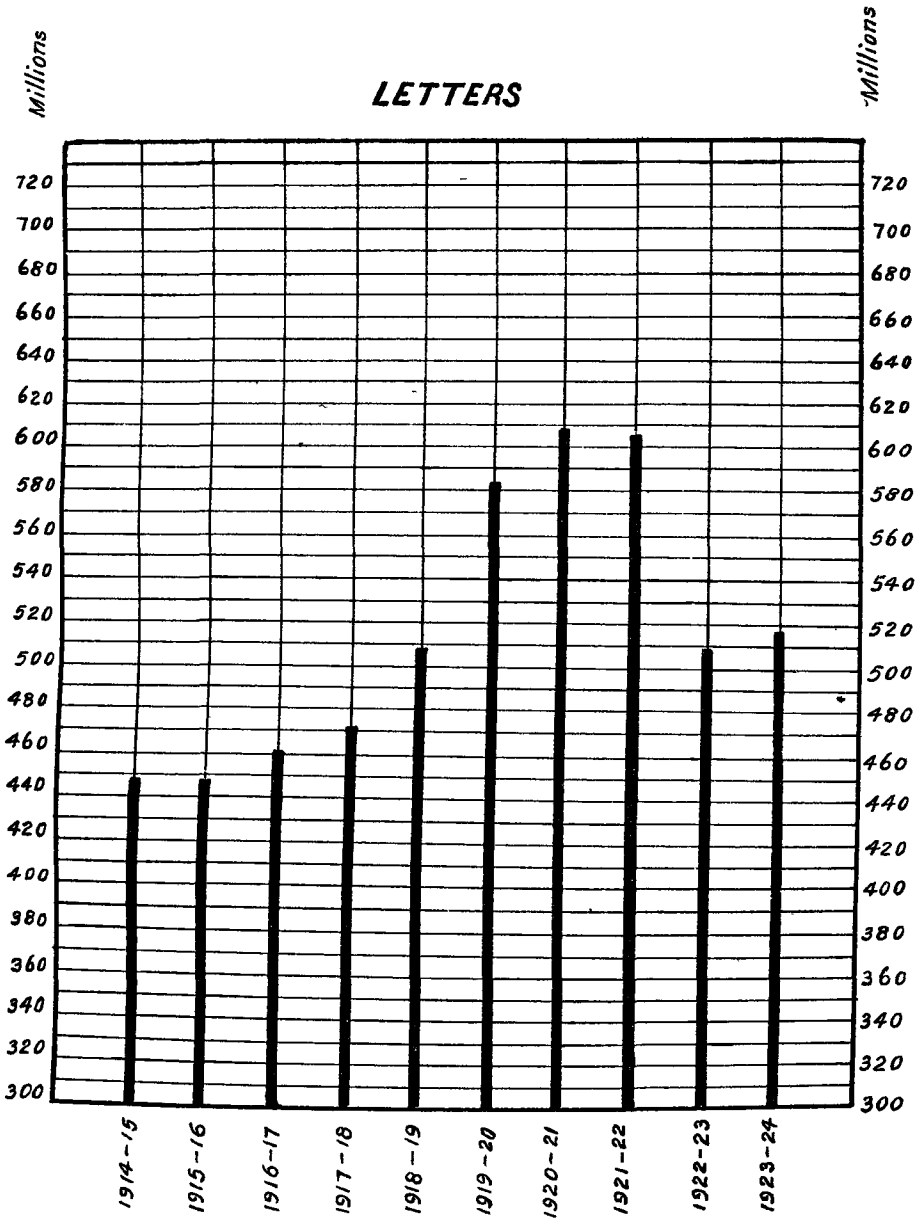
Department on the 31st March 1923 and the 31st March 1924—concl'd.

ms.	Punjab and North-West Frontier.		United Provinces.		Sind and Baluchistan.		Sorting Circles.		Engineering Circles.		Telegraph Stores and Workshops.		Wireless Section.		Officers on deputation.		TOTAL	
	1924	1923.	1924	1923	1924	1923	1924	1923.	1924.	1923.	1924.	1923.	1924	1923	1924.	1923.	1924.	1923.
..	..			...	.				253	207		1		.	...	..	253	275
.	..								..	.		..	27	20			27	29
S08	2,403	134	2,664	215	521	86	3,444		801	757	142	148	9	41	0	4	16,950	5,144
2,954	2,430	2,340	2,209	2,140	148	149	1	1	...	...							17,848	17,464
6,956	5,590	5,488	6,370	6,300	768	776	2,326	2,046	...	...	..	..	..	..	..	..	44,683	44,021
..	...	...	.	..	.	...	..	...	3,687	3,807	...	..	..	..	42	1	3,720	3,808
933	452	456	324	322	131	134	3	..	202	278	65	80	60	31			3,452	3,481
.	.	.	.		...				.	.	..	..	.	.		...	2	
17,461	14,980	14,581	15,845	13,631	2,007	2,004	7, 16	6,974	5,172	5,249	232	256	188	185	70	25	1,30,773	1,19,646

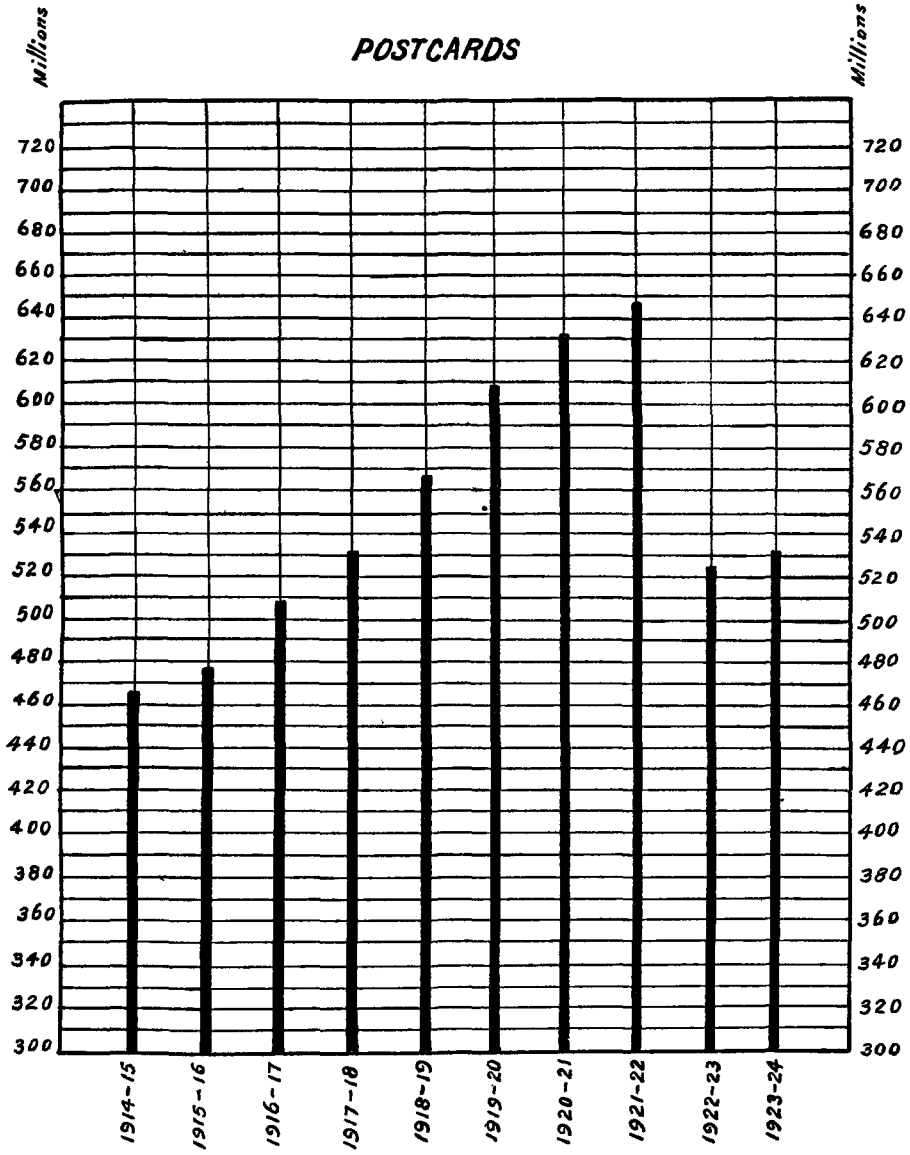


DELHI  
GOVERNMENT OF INDIA PRESS  
1924

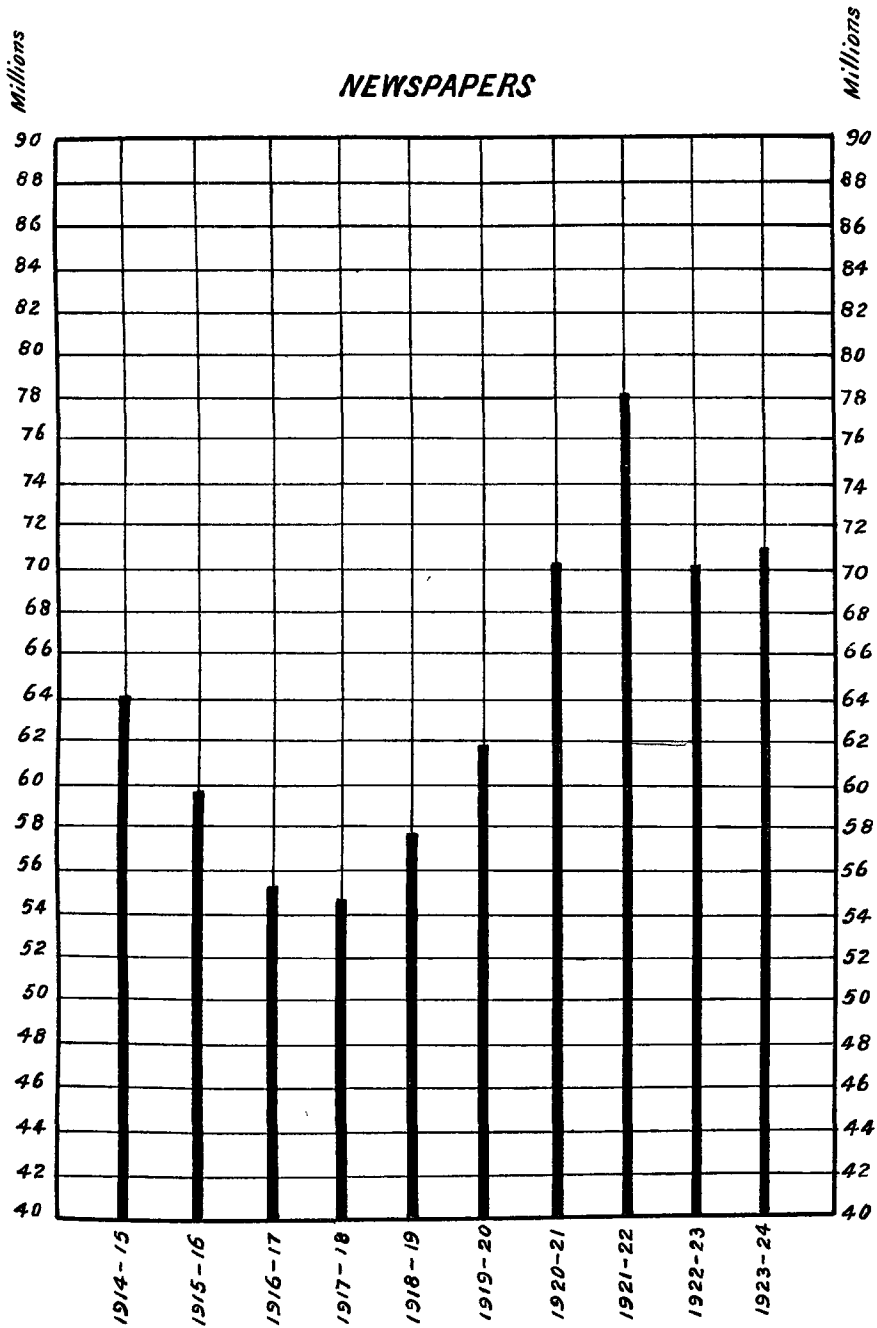
# LETTERS



# POSTCARDS



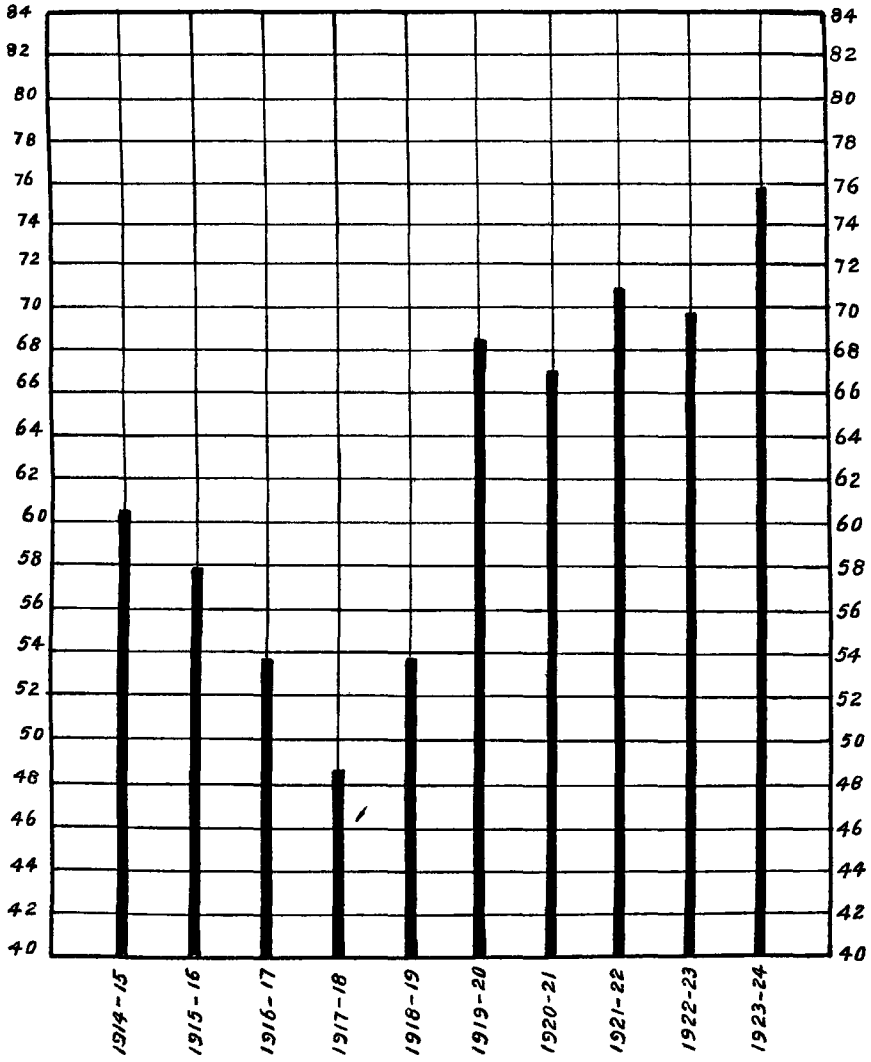
# NEWSPAPERS



Millions

### PACKETS

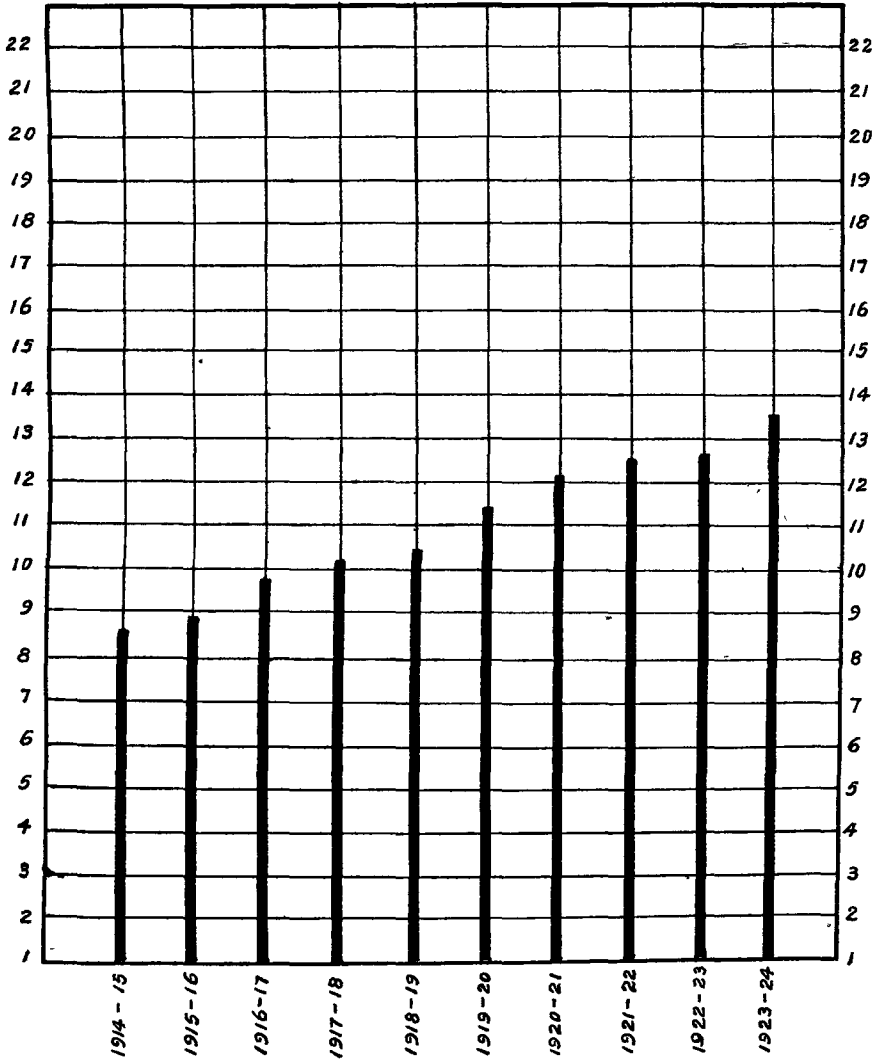
Millions



Millions

# PARCELS

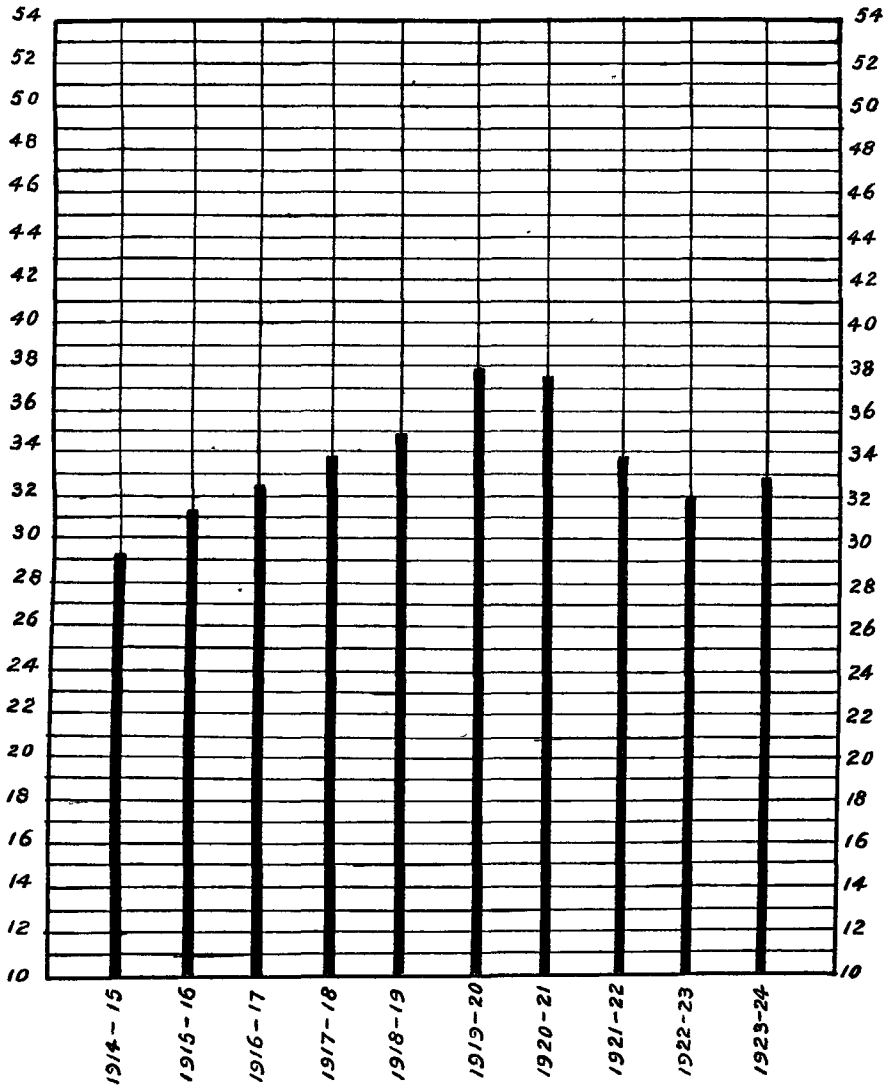
Millions



Millions

### MONEY ORDERS

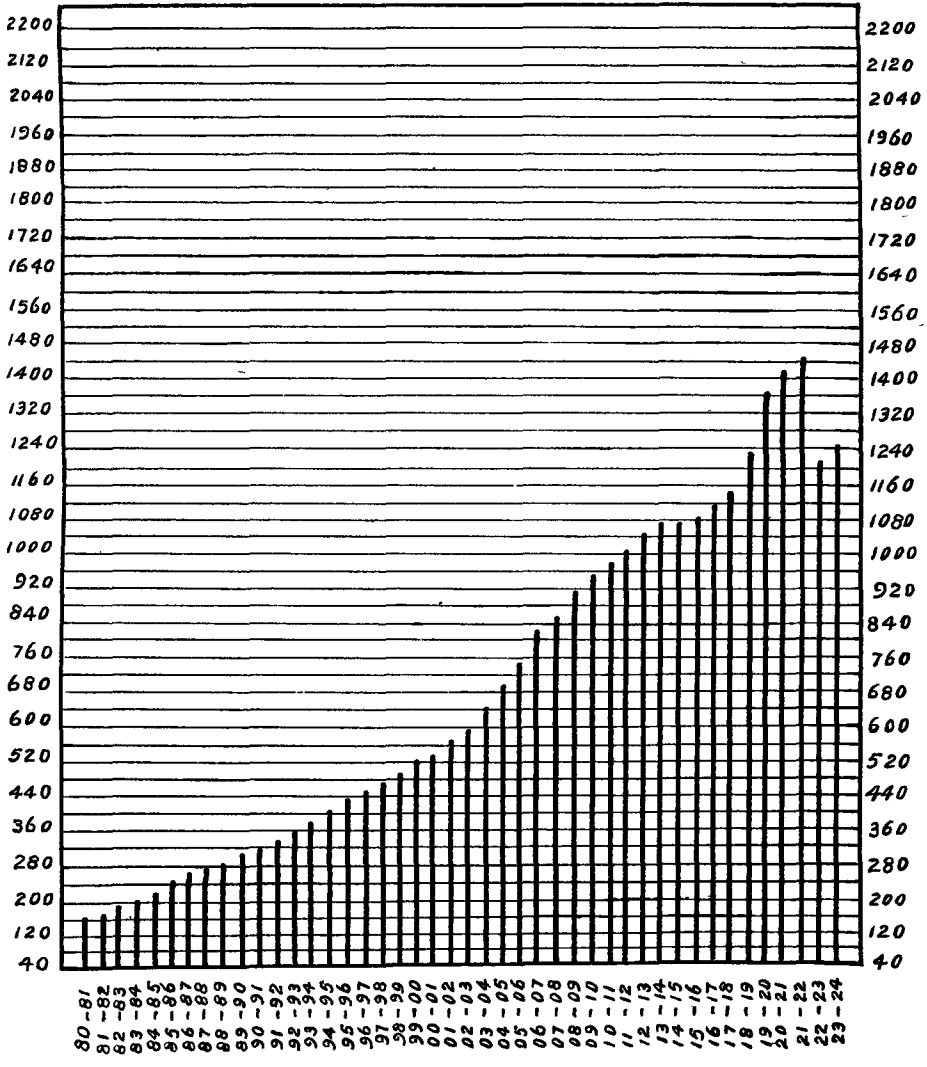
Millions



Millions

### DIAGRAM SHOWING GROWTH OF POSTAL TRAFFIC SINCE 1880-81 - ALL ARTICLES.

Millions





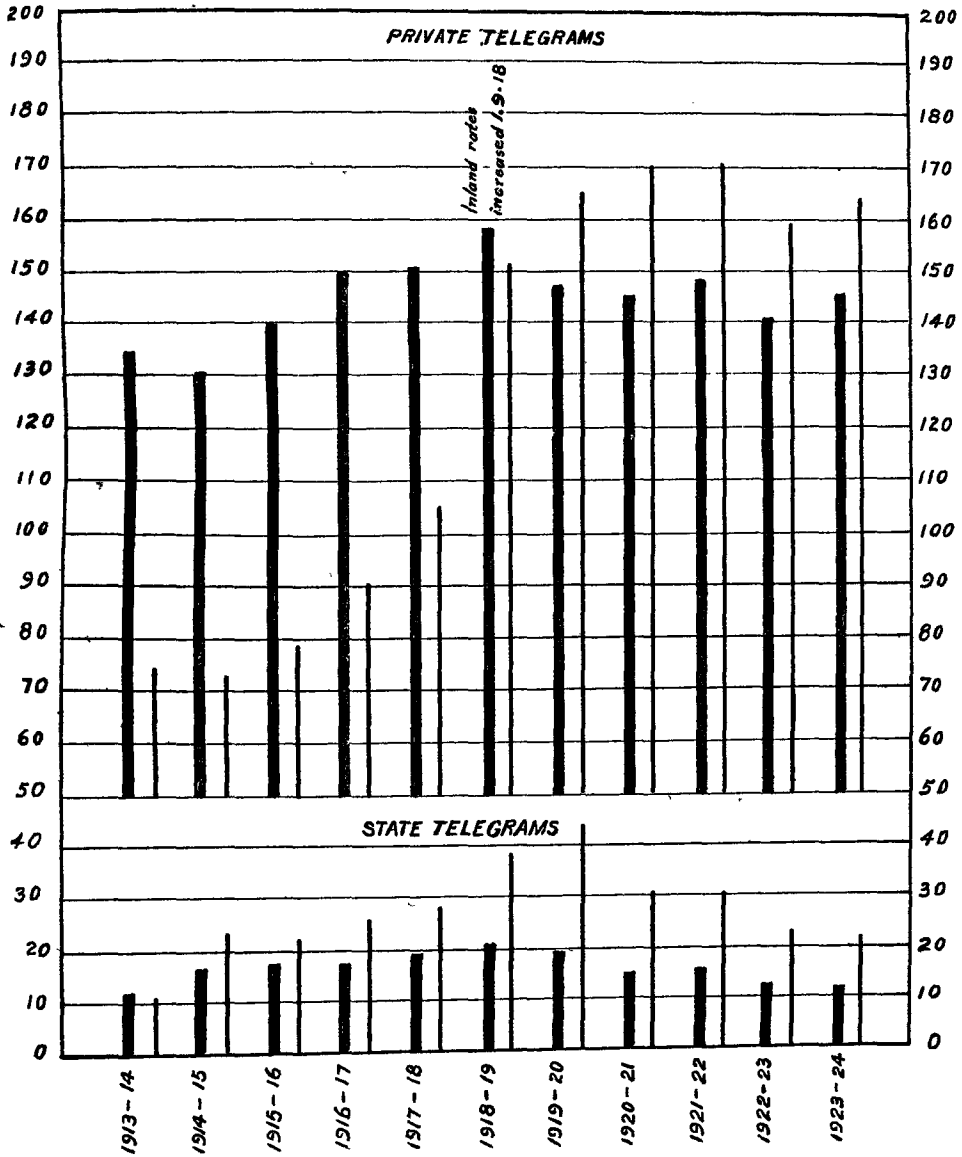
# INLAND TELEGRAMS

(Excluding Press)

..... Number of telegrams in lakhs.  
 ..... Value of telegrams in lakhs.

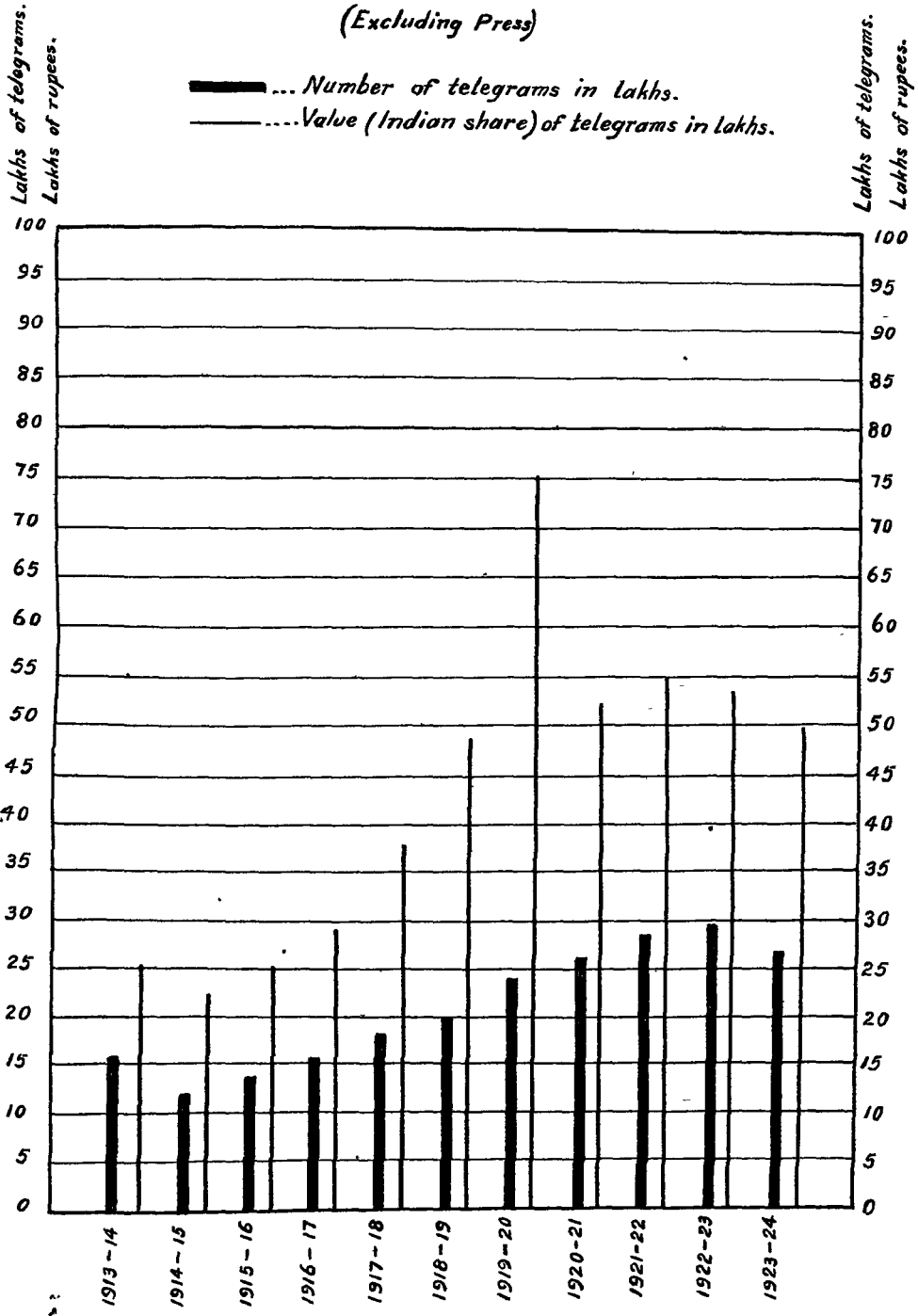
Lakhs of telegrams.  
Lakhs of rupees.

Lakhs of telegrams.  
Lakhs of rupees.



# FOREIGN PRIVATE TELEGRAMS

(Excluding Press)



## FOREIGN STATE TELEGRAMS

