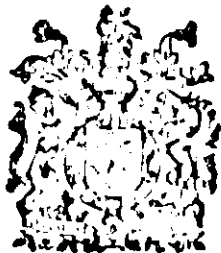


REPORT
ON THE
ADMINISTRATION
OF THE
BOMBAY PRESIDENCY



For the year
1914-1915

BOMBAY
PRINTED AT THE GOVERNMENT CENTRAL PRESS
1916

0316
V231.8r
F2-
014465

Price—Rs. 1-0-0 or 2s.

**OFFICIAL AGENTS FOR THE SALE OF INDIAN
OFFICIAL PUBLICATIONS.**

IN ENGLAND.

CONSTABLE & Co., 10, Orange Street, Leicester Square, W. C., London.
GRINDLAY & Co., 54, Parliament Street, S. W., London.
HENRY S. KING & Co., 65, Cornhill, E. C., London.
**P. S. KING & SON, 2 & 4, Great Smith Street, Westminster, S. W.,
London.**
**KEGAN PAUL, TRENCH, TRUBNER & Co., Ltd., 68-74, Carter Lane
E. C., and 25, Museum Street, W. C., London.**
B. QUARITCH, 11, Grafton Street, New Bond Street, W., London.
W. THACKER & Co., 2, Creed Lane, London, E. C.
LUZAC & Co., 46, Great Russel Street, London, W. C.
B. H. BLACKWELL, 50 & 51, Broad Street, Oxford.
DEIGHTON BELL & Co., Limited, Cambridge.
T. FISHER UNWIN, Limited, 1, Adelphi Terrace, London, W. C.

ON THE CONTINENT.

ERNEST LEROUX, 28, Rue Bonaparte, Paris.
MARTINUS NIJHOFF, The Hague.

IN INDIA.

HIGGINBOTHAM & Co., Madras.
V. KALYANARAMA IYER & Co., Madras.
P. R. RAMA IYER & Co., Madras.
THACKER, SPINK & Co., Calcutta.
W. NEWMAN & Co., Calcutta.
S. K. LAHIRI & Co., Calcutta.
R. CAMBRAY & Co., Calcutta.
THACKER & Co., Limited, Bombay.
A. J. COMBRIDGE & Co., Bombay.
MANAGER, GOVERNMENT CENTRAL PRESS, Bombay.
D. B. TARAPOREVALA, SONS & Co., Bombay.
SUNDER PANDURANG, Bookseller, etc., Bombay.
GOPAL NARAYEN & Co., Booksellers, etc., Bombay.
N. M. TRIPATHI & Co., Booksellers, etc., Bombay.
Mrs. RADHABAI ATMARAM SAGOON, Bookseller, etc., Bombay.
RAMCHANDRA GOVIND & SON, Booksellers, etc., Bombay.
BOMBAY TRACT AND BOOK SOCIETY, Bombay.
N. B. MATHUR, K. N. H. Press, Allahabad.
MANAGER, NYAYASHRAYA PRESS, Poona.

REPORT
ON THE
ADMINISTRATION
OF THE
BOMBAY PRESIDENCY



*For the year
1914-1915*

BOMBAY
PRINTED AT THE GOVERNMENT CENTRAL PRESS
1916

CONTENTS.

	PAGE
PART I.	
SUMMARY	i—xviii

PART II.	
CHAPTER I.—PHYSICAL AND POLITICAL.	
AREA, ASPECT, CLIMATE, PRODUCTS	} See pages 1—91 of Report for 1911-1912, Part II.
HISTORICAL SUMMARY	
FORM OF ADMINISTRATION	
CHARACTER OF LAND TENURES, SYSTEM OF SURVEYS AND SETTLEMENTS	
CIVIL DIVISIONS OF BRITISH TERRITORY— DETAILS OF THE LAST CENSUS	

TRIBUTARY STATES.	
North Gujarát—	
Cutch	1
Káthiáwár	2
Pálanpur Agency	4
Mahi Kántha Agency	5
Rewa Kántha Agency	6
Cambay	7
South Gujarát—	
Dharampur, Bándsa and Sachin	ib.
Dángs	8
North Konkan, Násik and Khándesh—	
Surgána	ib.
Jawhár	9
South Konkan—	
Janjira	10
Sávantvádi	11
Deccan—	
Sátára Jágirs—	
Bhor, Phaltan, Aundh, Akalkot, Jath and Dapblá- pur	ib.
Kolhápúr, Southern Marátha Country States and Dhárwár—	
Kolhápúr	12
Southern Marátha Country States	13
Sávanur	14
Sind—	
Khairpur	15
Aden	ib.
Condition of the People	16

CHAPTER II.—ADMINISTRATION OF THE LAND.	
1.—Surveys—	
Topographical Survey	17
Tidal and Levelling Operations	ib.
Magnetic Survey	ib.
Revenue Surveys	ib.
City Surveys	18
2.—Settlements—	
Survey Settlements	ib.
Alienation Settlements	ib.
3.—Waste Lands	19
4.—Land Records—	
Presidency Proper	ib.
Sind	21
5.—Wards' and other Estates under management of Government—	
Estates in charge of the Tálukdári Settlement Officer	ib.
Estates in charge of the Manager, Incumbered Estates, Sind	22
Estates managed by Collectors	23
5.—Revenue and Rent-paying classes	ib.

CHAPTER III.—PROTECTION.	
LEGISLATIVE AUTHORITY	} See pages 115— 118 of Report for 1911-1912, Part II.
1.—Course of Legislation	24
2.—Police—	
Mofussil, Sind and Railway Police	26
Rural Police	27
Additional Police	ib.
Bombay City Police	28
Aden Police	ib.
Vagrants	ib.
3.—Wild animals and venomous snakes	29
4.—Chemical Analysis	ib.
5.—Criminal Justice	ib.
6.—Prisons—Civil and Criminal	30
7.—Civil Justice	31
Execution of decrees of Civil Courts by the Revenue Department	32
8.—Registration—	
Under Act XVI of 1908	ib.
Joint Stock Companies	ib.
9.—Local Board Administration	33
10.—Municipal Administration—	
Bombay Municipality	ib.
District Municipalities	35
Bombay Improvement Trust	36
11.—Military (Volunteering)	37
12.—Marine—	
Bombay Shipping Office	ib.
Aden Shipping Office	38
Bombay Port Trust	ib.
Karáchi Port Trust	ib.
Aden Port Trust	39

CHAPTER IV.—PRODUCTION AND DISTRIBUTION.	
1.—Agriculture—	
Area of available statistics	40
Cropped Areas	ib.
Agricultural Experiments	41
Agricultural Education	42
Advances to Cultivators	ib.
Agricultural Stock	43
Breeding operations	ib.
Fairs and Shows	44
2.—Weather and Crops—	
Meteorological Department of Western India	ib.
Note on the weather in the Bombay Presidency for 1913-14	ib.
Culába and Alibág Observatories	45
Season and Crops	ib.
Outturn of Crops	46
Insect Pests	47
Prices	ib.
Wages	ib.
Famine Relief	ib.
3.—Co-operative Societies	48
4.—Horticulture—	
Public Gardens	ib.
5.—Forests	49
6.—Mines and Quarries	51

CHAPTER IV.—PRODUCTION AND DISTRIBUTION—*continued.*

	PAGE
7.—POWER INDUSTRIES AND HANDICRAFTS	51
	52
	<i>ib.</i>
8.—Trade—	
(1) Presidency Proper	53
Chief Port, Bombay	<i>ib.</i>
Subordinate Ports	56
Land Trade	57
(2) Sind	58
Chief Port, Karáchi	<i>ib.</i>
Subordinate Ports	59
External Land Trade	<i>ib.</i>
(3) Aden	60
9.—Public Works—	
(1) Administration	61
(2) Roads and Buildings	62
Civil Buildings	<i>ib.</i>
Communications	67
Miscellaneous Public Improvements	68
Military Works	69
(3) Irrigation	
Financial Results	<i>ib.</i>
General Review	72
Sind	<i>ib.</i>
Deccan and Gujarát	78
10.—Railways	83
11.—Tramways	85

CHAPTER V.—FINANCIAL.

1.—Financial Review	86
2.—Mint	90
3.—Currency	<i>ib.</i>
4.—Land Revenue	92
5.—Irrigation Revenue	<i>ib.</i>
6.—Public Works Revenue	<i>ib.</i>
7.—Customs—	
Sea Customs	<i>ib.</i>
Land Customs	93
8.—Salt—	
Presidency Proper	<i>ib.</i>
Sind	94
Aden	95
9.—Excise—	
Presidency Proper	<i>ib.</i>
Sind	98
Aden	<i>ib.</i>
10.—Cotton Duties Act	<i>ib.</i>
11.—Stamps	99
12.—Income Tax	<i>ib.</i>
13.—Local Funds	<i>ib.</i>

CHAPTER VI.—VITAL STATISTICS AND MEDICAL RELIEF.

	PAGE
1.—Births and Deaths	101
2.—Emigration and Immigration	<i>ib.</i>
3.—Medical Relief	102
4.—Epidemic Diseases	<i>ib.</i>
5.—Bombay Bacteriological Laboratory	103
6.—Lunatic Asylums	104
7.—Sanitation	<i>ib.</i>
8.—Vaccination	105
9.—Veterinary	<i>ib.</i>

CHAPTER VII.—INSTRUCTION.

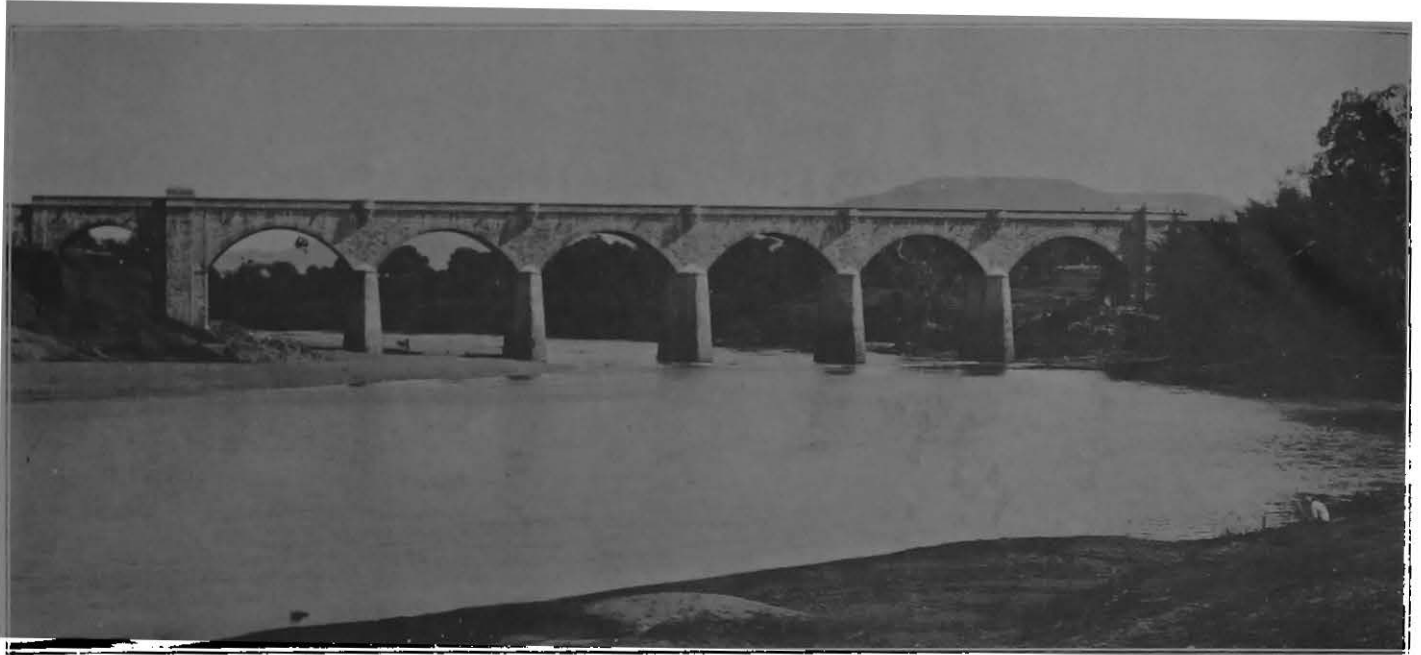
GENERAL SYSTEM OF PUBLIC INSTRUCTION	107	} See pages 207— 208 of Report for 1911-1912, Part II.
Education	107	
Yeránda Reformatory School	109	
Literature and the Press—		
Books and Periodicals	<i>ib.</i>	
Newspapers	<i>ib.</i>	
Government Publications	<i>ib.</i>	
LITERARY SOCIETIES		} See pages 211— 212 of Report for 1911-1912, Part II.
Royal Asiatic Society	110	
Arts and Sciences—		
Victoria and Albert Museum	<i>ib.</i>	
Karáchi Museum	<i>ib.</i>	
Bombay Natural History Society	<i>ib.</i>	

CHAPTER VIII.—ARCHÆOLOGY.

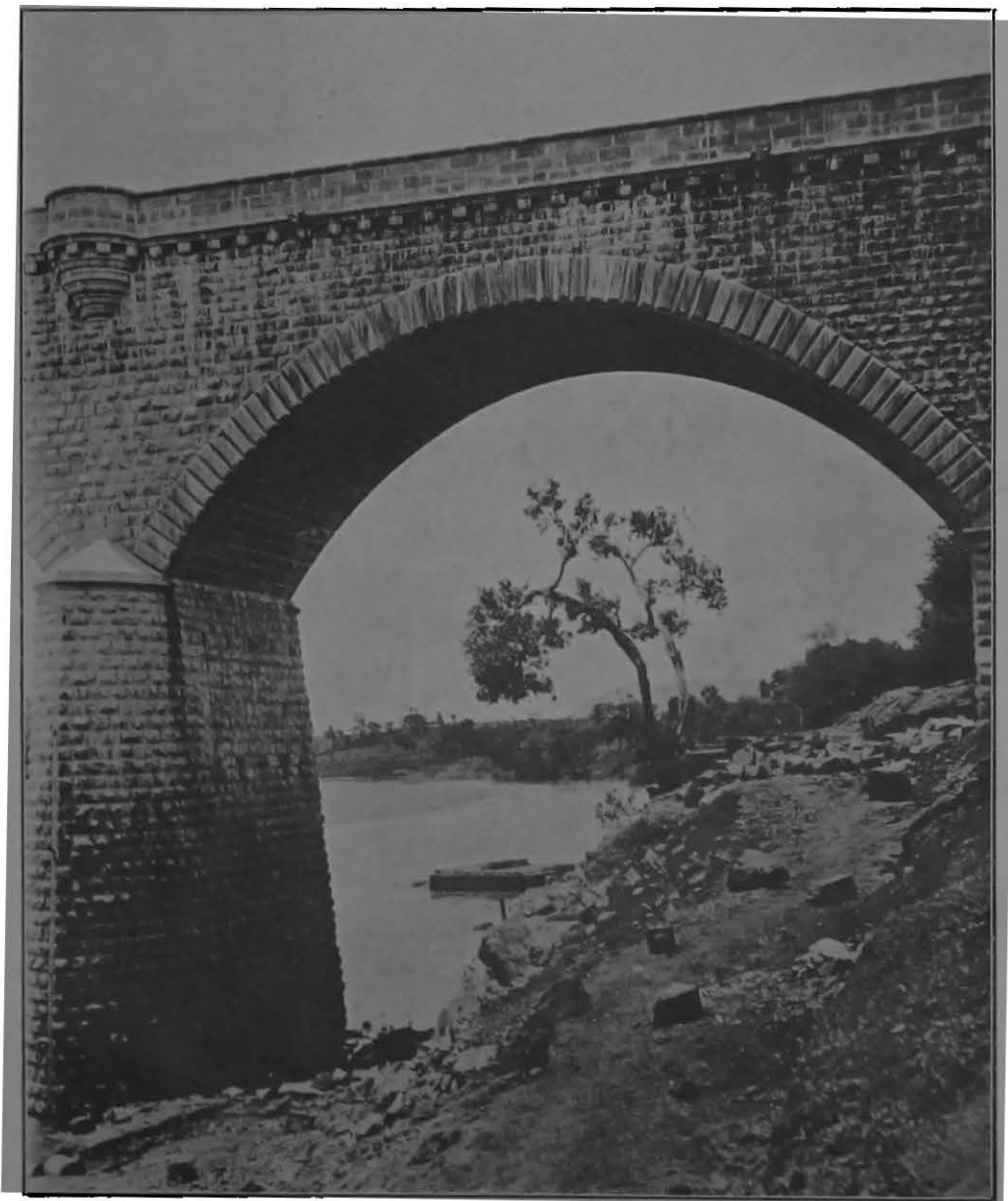
Archæological Survey of India, Western Circle	111
---	-----

CHAPTER IX.—MISCELLANEOUS.

1.—ECCLESIASTICAL JURISDICTION	112	} See pages 214— 217 of Report for 1911-1912, Part II.
Summary of Events in 1914-15	112	
2.—Stationery	<i>ib.</i>	
3.—General Miscellaneous—		
Government Central Press, Bombay	<i>ib.</i>	
Government Printing Press, Karáchi	<i>ib.</i>	
Government Photozincographic Office, Poona	<i>ib.</i>	
The War Relief Funds	<i>ib.</i>	



21—Willingdon Bridge at Mahuli—View from down-stream.



22—Willingdon Bridge at Mahuli—One of the six spans of 55 feet, showing arch ring and parapet wall of moulded concrete blocks.