

**GERMAN MENACE**  
to  
**EUROPE**

**THROUGH THE AGES**

by

**S.M. MARVEY**

and

**B. ZABORSKI**

## P R E F A C E

**D**EMOCRACY is hopeless and helpless if the citizens' minds are not both educated and civically responsible. To understand—let alone control—Foreign Policy is impossible without a knowledge of History and Geography—the parents of all Politics.

The maps in this book show more clearly than any text the persistent growth of the Prussian cancer from its originally infected cell in the Mark of Brandenburg into the living tissue of the body of Poland in East Prussia, then over the whole body of Germany and ready in 1939, as in 1914, to devour Europe and the World itself. "*Heute gehört uns Deutschland. Und Morgen die ganze Welt!*"

What the Serbs, Luceians, Obotrites, original non-German Prussians, Poles or any other neighbours of Prussia-Germany have suffered yesterday, can very well be our fate tomorrow. Science has now armed the Devil even better than the Saints.

"Appetite grows with eating"! If we do not want to be eaten, there is only one remedy—*delenda est Borussia!*

Alanraham

House of Commons,  
10th March, 1944.

39826

## Introduction

**T**HE HISTORY of the territorial development of the German State shows that it was only partly formed of native German lands ; it grew mainly by the acquisition of territories belonging on the one hand to Latin and on the other to Slavonic nations. Aggression was always the means by which the German State expanded.

The Eastern Frankish Kingdom was the nucleus of Germany. It formed the eastern part of the former Carolingian Monarchy, which became separate after the partition of Charlemagne heritage by his grandsons in 843. Until 911 this State was ruled by kings of the Carolingian dynasty. In 911 one of the German princes, Conrad I, was elected king. Thus the Eastern State broke its link with the former Frankish Monarchy and thence acted independently. Since then it came to be known as the German State. From the very start this State showed aggressive feelings towards the neighbouring countries. First it started the aggression to the South-West of its territory. Lorraine fell under its domination as early as 870. After the coronation of the German, King Otto I, as Roman Emperor in 962, Italy came under German rule, and in 1034 the fate of Italy was shared by Burgundy, after a short period of independence.

The German territorial conquests in the East, however, in lands inhabited by Slavonic peoples, were much more important. At the time of its coming into existence (at the beginning of the 10th Century) the German State expanded only as far as the river Elbe and Saale in the East, and to the Raab and Danube in the South-East.

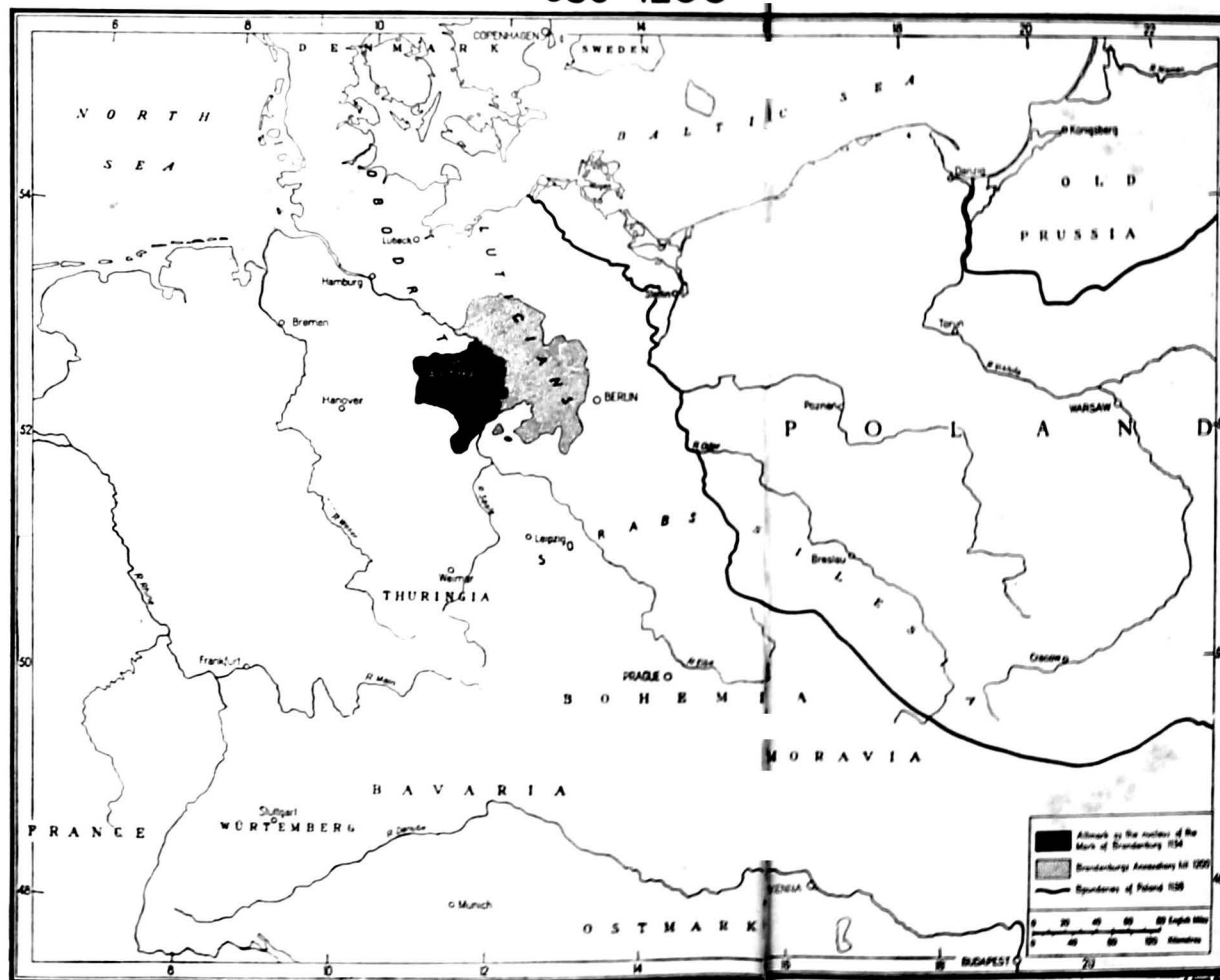
## WESTERN SLAVS—THE FIRST PREY OF GERMAN AGGRESSION. THE MARK OF BRANDENBURG GREW OUT OF THEIR RUINS.

The great movement eastwards which lasted many centuries—the so-called "Drang nach Osten"—began in 919 when the Saxon dynasty was established on the throne of Germany. Then the Germans began their everlasting wars of conquest directed against the Slavs, without any geographical or economic justification as they had more than enough land and other riches. Their motive was simply the lust for conquest, driving the German Nation to constant craving for war and aggression. German rulers did not only use the supremacy of armed forces to further their conquests, but also intrigue, guile and treason. Moreover, they used fully the missionary rights which they derived from the Imperial title assumed in 962, and carried on a systematic conquest of the Slav lands under the pretext of converting the pagan Slavs to Christianity.

Thus in the 10th century, after many cruel wars, the Germans annexed the land of the Sorbs, between the rivers Saale and Neisse; at the same time they compelled the Czech princes

to acknowledge German feudal supremacy. For two centuries other branches of the Western Slavs, the Obodrites and the Luticians, who lived between the Elbe and the Oder, heroically contested German aggression. They succumbed, however, under the mighty blows of two German princes, Henry the Lion of Saxony and Albrecht the Bear of Brandenburg. Those two princes of the 12th century continued on their own the aggressive tradition of the German Emperors, and having broken down by fire and sword the opposition of the Western Slavs, conquered their territory between the Elbe and the lower Oder. Henry the Lion was soon defeated in a war against the German Emperor but Albrecht the Bear managed to keep the conquered Slav territories and to create there a powerful principality called the Mark of Brandenburg. It originated in a North Mark, afterwards known as the "Altmark", which was bestowed as fief on Albrecht by the Emperor. Speedily growing by the addition of neighbouring Slav lands, this Brandenburg Mark became the core of the later Brandenburg-Prussian power.

# 936-1200



## THE MARK OF BRANDENBURG AND THE TEUTONIC ORDER CONTINUED THE GERMAN AGGRESSIVE TRADITION. POLAND WAS THEIR FIRST OBJECTIVE.

The subjugation of the Western Slavs was followed by the tightening of the feudal bonds of the Czechs; their land, nominally a Kingdom, was turned into a German principality. But the Germans did not succeed in imposing their sovereignty on Poland. In spite of the numerical and political superiority of the German aggressor, Poland defended her independence successfully and denied all the German Emperor's claims to over-lordship. In the 13th century, however, the German menace to Poland developed in two other ways; the Mark of Brandenburg stretched out to the Polish frontier and the Order of Teutonic Knights was imported into Poland.

The Margraves of Brandenburg conquered part of West-Pomerania in the first half of the century, and compelled the local princes to become their vassals. In 1249 they acquired the Polish province of Lebus by skilful machination, thus winning a gateway for further attacks on Polish territory.

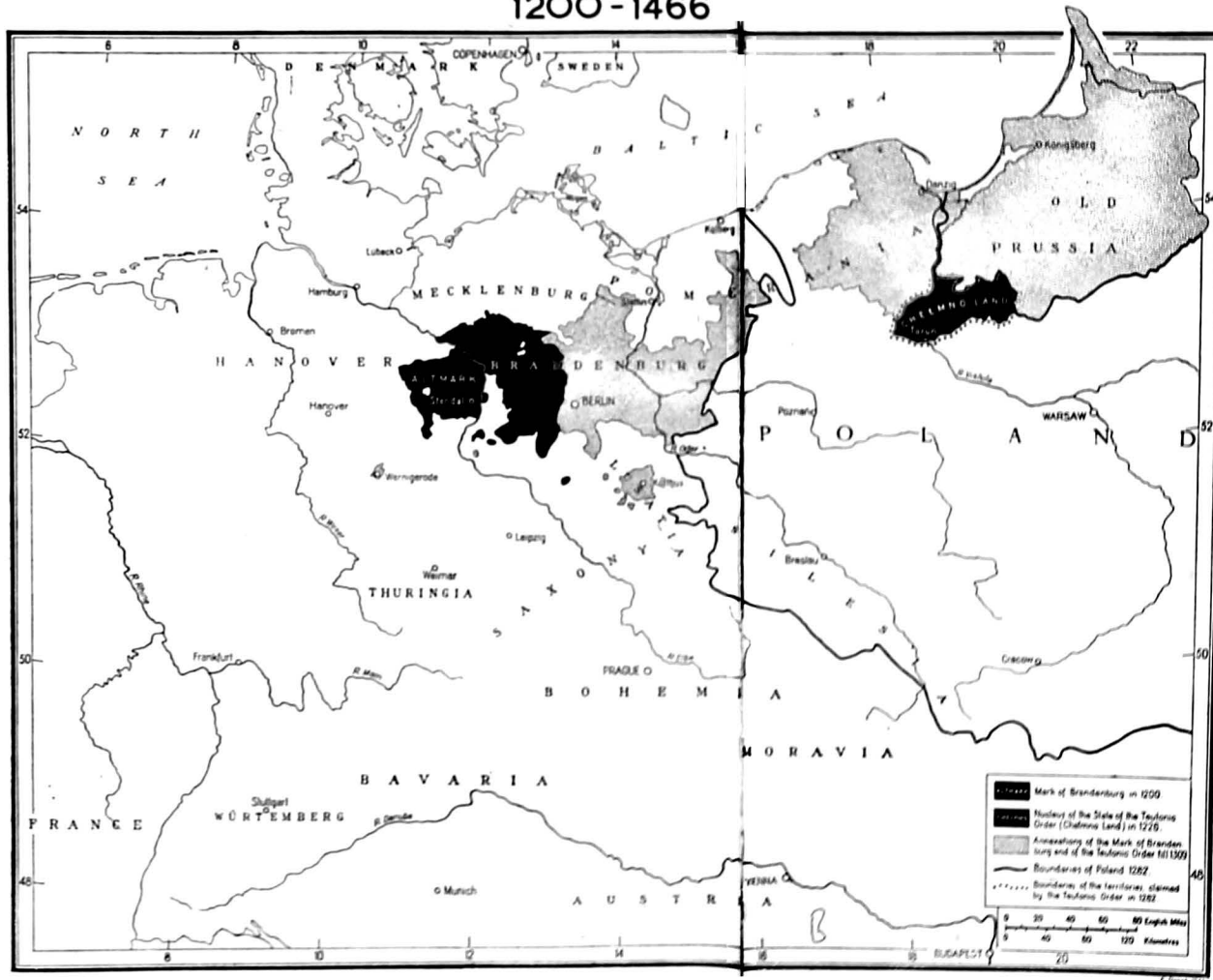
In 1226, a Polish prince, Conrad of Mazovia, invited the Teutonic Order to defend his lands against the pagan Old-Prussians and to convert them to Christianity. In compensation for the missionary work, the Knights received from the

Polish prince the tenure of the district of Chelmno, as well as the territories to be won from the Old-Prussians.

The Teutonic Knights accomplished their mission in a way utterly incompatible with all conceptions of law and morality. They subjugated Old-Prussia by terror and cruelty between 1230 and 1287, and formed of it and the Polish land of Chelmno an independent state, refusing to acknowledge Polish sovereignty in spite of the agreements they had previously made. Moreover, realizing the great economic importance of the estuary of the Vistula, they acquired Polish Pomerania by treason in 1308. Thus they closed the Polish access to the sea, which was the chief Polish commercial route, and by holding Danzig and the Vistula estuary, began to amass great wealth from Polish trade. The accumulated riches provided the Order with the means for keeping a strong army, destined not only to defend their conquests but also to serve their policy of further aggression.

Poland endeavoured to regain these valuable lands by law as well as by arms, but she did not achieve this until after her union with Lithuania in the following century.

# 1200 - 1466



## THE UNION OF POLAND AND LITHUANIA PUT A STOP TO THE AGGRESSION OF THE TEUTONIC ORDER.

The beginning of the 15th century saw the Order of Teutonic Knights still striving for new conquests, directing its designs against pagan Lithuania. This country, like Old-Prussia, was threatened with complete annihilation. It was saved by its union with Poland; this was a heavy blow to the Teutonic Order. Of her own free will Lithuania accepted Christianity from Polish hands, and so the Order could no longer deceive the public opinion of Europe with stories of its mission among the Lithuanian pagans and lost its alleged *raison d'être* in that country.

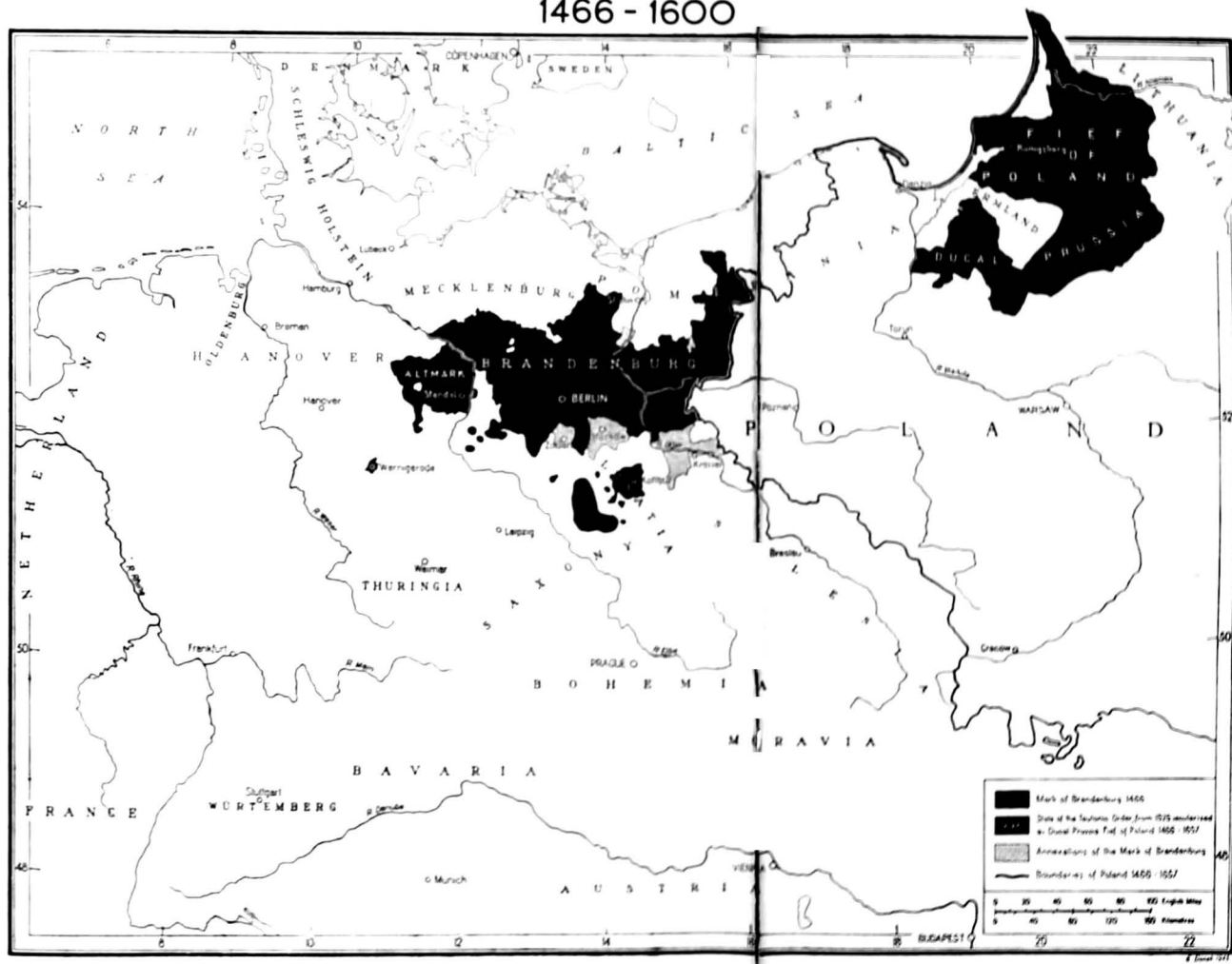
The Teutonic Knights had tried hard to prevent the Polish-Lithuanian Union and when they failed they provoked a war in 1409 which culminated in their crushing defeat by the Polish and Lithuanian armies at the battle of Grunwald (1410). Unfortunately this victory was not followed up. Neither this war nor the following ones in 1422 and 1432 broke the power of the Teutonic Order decisively nor did they return Pomerania to Poland. Only after a powerful pro-Polish popular movement among the inhabitants of Pomerania and Old-Prussia in the middle of the 15th century were these provinces restored to Poland. In revolt against their despotic and oppressive rulers the population appealed to Casimir Jagellon in 1454 for help and incorporation in the Polish State.

The King replied by issuing a decree of incorporation; the Order reacted with a declaration of war. A Polish victory was the result. By a treaty concluded in Torun in 1466, Poland gained the districts of Pomerania, Chelmno and Michalów and the following parts of Old Prussia: Malborg, (Marienburg), Elblag (Elbing), Krysztork (Christburg), and the Bishopric of Warmia (Ermeland). The remaining part of Old-Prussia was kept by the Order but as a vassal state of Poland.

The power of Poland kept her second enemy, the Mark of Brandenburg, within bounds. Brandenburg, at the beginning of the 14th century, was the scene of many dynastic changes. The Ascanian House died out in 1320. The Mark was then ruled for some time by the Wittelsbachs, from 1373 by the House of Luxemburg, from 1393 by Joszt, Margrave of Moravia; in 1415 it was finally bestowed on Frederick of Hohenzollern, who thus founded a new ruling dynasty. The Hohenzollerns not only regained all the provinces lost in the preceding period of transition but, revealing the traditional Brandenburg and German spirit of aggression, soon produced effects fatal not only to Poland but to the whole of Europe.



# 1466 - 1600



**THE BRANDENBURG HOHENZOLLERNS ACQUIRING IN 1618 THE LANDS OF THE  
SECULARIZED TEUTONIC ORDER FORMED THE POWERFUL BRANDENBURG-PRUSSIAN  
STATE WHICH RAPIDLY EXPANDED BY MEANS OF CONQUEST AND AGGRESSION.**

The Teutonic Order which was so often faithless in its relation to Poland, continued the same policy and did not fulfil the stipulations of the Treaty of Torun with regard to its vassal duties. As soon as in 1498 the Order refused to pay homage and provoked soon a new crisis in its relation to Poland by electing as Grand Master, the Margrave Albrecht of Hohenzollern-Ansbach, a relative of the Hohenzollerns of Brandenburg. His provocative behaviour resulted in war with Poland. In spite of the Polish victory, a treaty concluded at Cracow in 1525, was favourable to Albrecht. The Teutonic Order was secularized; Prussia, remaining a fief of Poland, became a hereditary Principality under the princes of Hohenzollern-Ansbach.

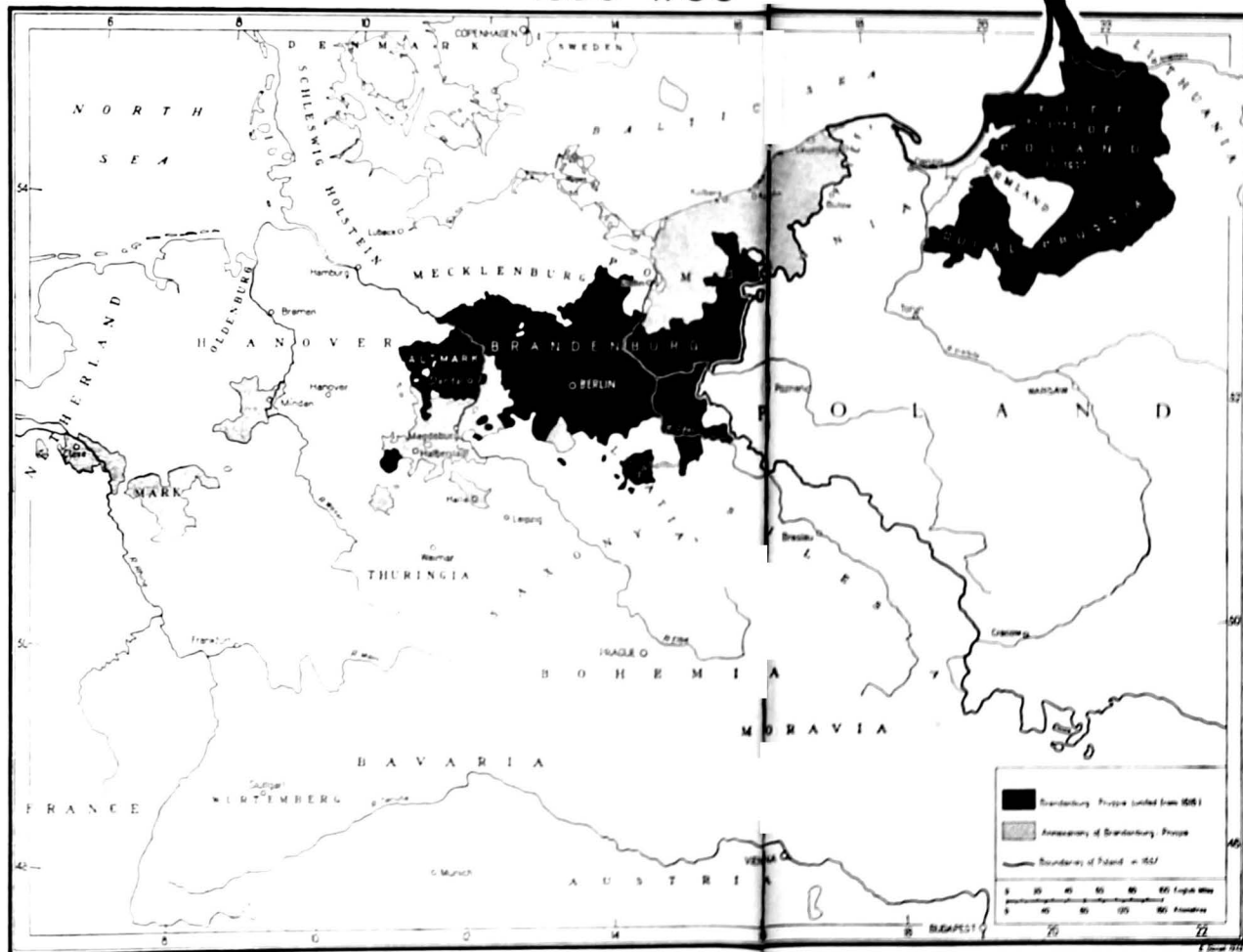
The Treaty of Cracow formed a basis for further German expansion. The Hohenzollerns of Brandenburg, who of long aspired to extend their rule over Prussia, in 1563 by blackmailing the Polish King, succeeded in obtaining the rights of inheritance in this province. As a result, in 1618, after the death of Albrecht Frederick, who left no direct heir, the Principality of Prussia passed to John Sigismund, Elector of Brandenburg. Having thus obtained a strong foothold in

Prussia, the Electors looked for a good opportunity of getting rid of their feudal subordination to Poland. They made use of the difficult situation in which her wars with Sweden placed Poland, and in 1657 the Elector Frederick William obtained a discharge of his vassal obligations in a treaty signed at Welawa (Wehlau) and Bydgoszcz (Bromberg).

Prussia was not the only aggrandizement of the House of Brandenburg in the 15th, 16th or 17th centuries. By aggressive wars, by diplomatic intrigues and by inheritance it acquired the following territories: Wernigerode (1450), Neumark (1455), Kottbus (1462), Schwedt (1479), Krossen (1482), Zossen and Ruppen (1490), Havelberg (1524), Storkow and Beskow (1575), the Principalities of Cleve, Mark and Ravensberg (1609), the eastern part of West Pomerania with Kolberg and Köslin (1648), the secularized Bishoprics of Magdeburg, Halberstadt and Minden (1648), and Bütow and Lauenburg, the last ones as Polish fiefs (1657).

These numerous acquisitions brought new power to the Mark of Brandenburg and with them the State grew still more aggressive, eager for further conquests.

# 1600-1700



## PRUSSIA—A MENACE TO EUROPE AFTER THE ANNEXATION OF SILESIA AND OF THE POLISH TERRITORIES.

In 1701 the Elector of Brandenburg assumed the title of King in Prussia in order to underline his prestige and power. This new dignity served as a springboard for further expansion on the Baltic and in the province of Silesia.

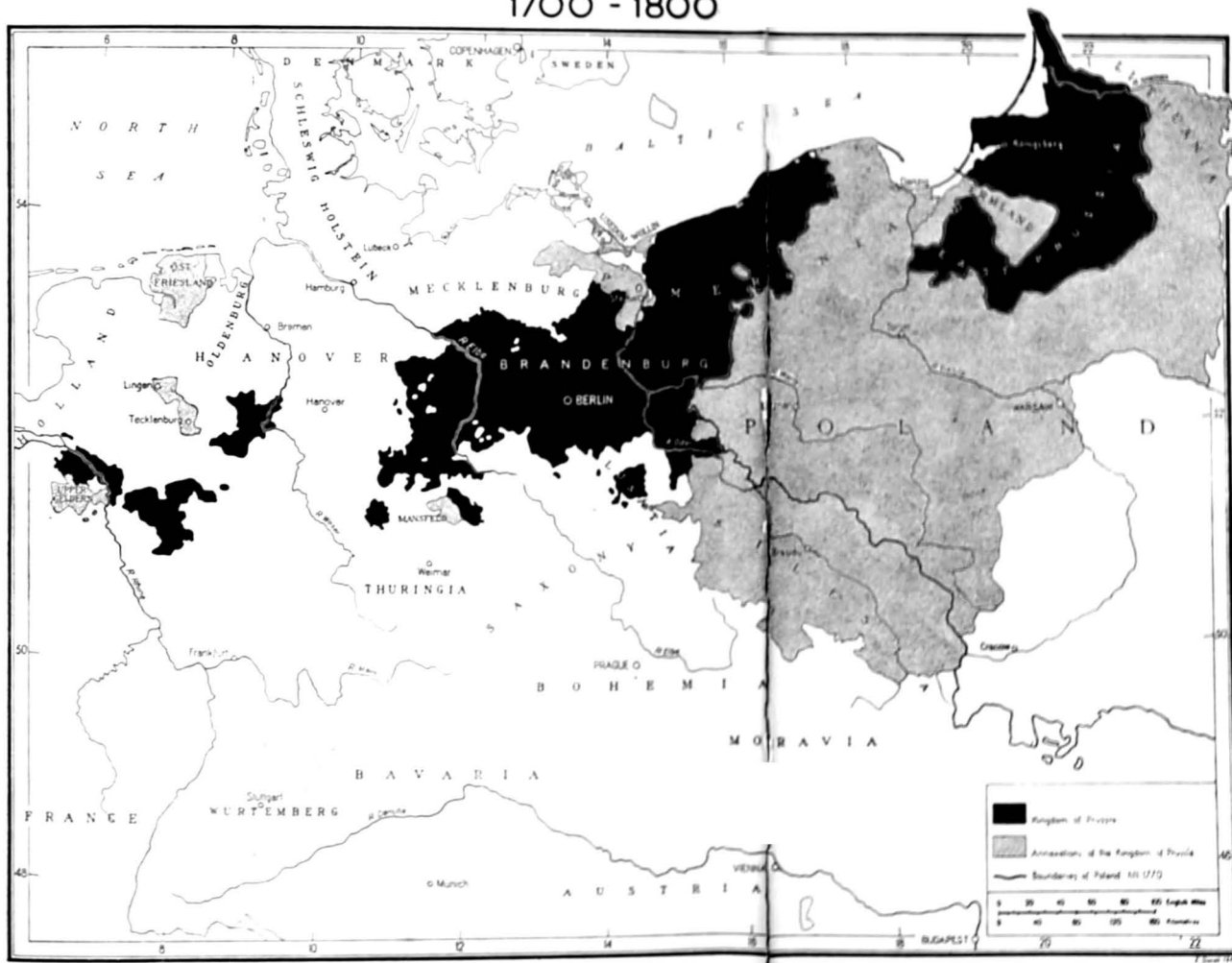
The Northern War offered good opportunities for profitable acquisitions on the Baltic. The part played by Prussia in this war was very small but her rôle in the dismemberment of the Swedish possessions in Germany was considerable. By the Treaty of Nystadt and Stockholm (1720) she received Pomeranian territory including Stettin, with the estuary of the river Oder and some lands beyond it.

Once in possession of the Lower Oder, Prussia began to plan the annexation of the upper regions of this river—the rich province of Silesia. This land, Polish originally, had passed in the 14th century to Bohemia, and had belonged to the Austrian Crown since the 16th century, with all other Czech provinces. In order to annex Silesia, Frederick II, in 1740, invaded it and fought three wars in succession with Austria. The peace treaties that followed gave Frederick II the whole province of Silesia except the Principalities of Teschen and Jägerndorf. During the same period the Hohenzollerns annexed as well, sundry territories in the

German Reich; all of them were of great strategic value. They were Lingen, Tecklenburg (1707), Limburg (1713), Ostfriesland (1744) and Bernstein in Pomerania (1749).

This expansionist policy of the Prussian Kingdom proved fatal to Poland. From the moment they united, Prussia and Brandenburg the Hohenzollerns aimed at the conquest of the Polish territories situated between these two provinces. This was the origin of the infamous plan for partitioning Poland. In connivance with Russia and Austria, Frederick II achieved the first part of this design in 1772; he took from Poland, Pomerania (without Danzig and Torun), Warmia, (Ermeland), the district of the river Notec and a part of Kuyawia. Plans for the further dismemberment of Poland were cynically carried out by his successor, Frederick William II. In 1793 and 1795 the second and third partition took place. Prussia annexed Danzig, Torun, Posnania, the rest of Kuyawia, Leczyca, Sieradz, Mazovia (including Warsaw), a part of Podlasie and a small stretch of Lithuania. The annexation of these Polish lands had very great consequences not only for Poland which was directly wronged but also for the whole of Europe. Prussia was now strong enough to become a menace to all European States.

# 1700 - 1800



## THE CONGRESS OF VIENNA IN 1815 WAS A CROWNING TRIUMPH FOR THE PRUSSIAN POLICY OF AGGRESSION AND THE SPRINGBOARD FOR PRUSSIAN SUPREMACY IN THE GERMAN REICH.

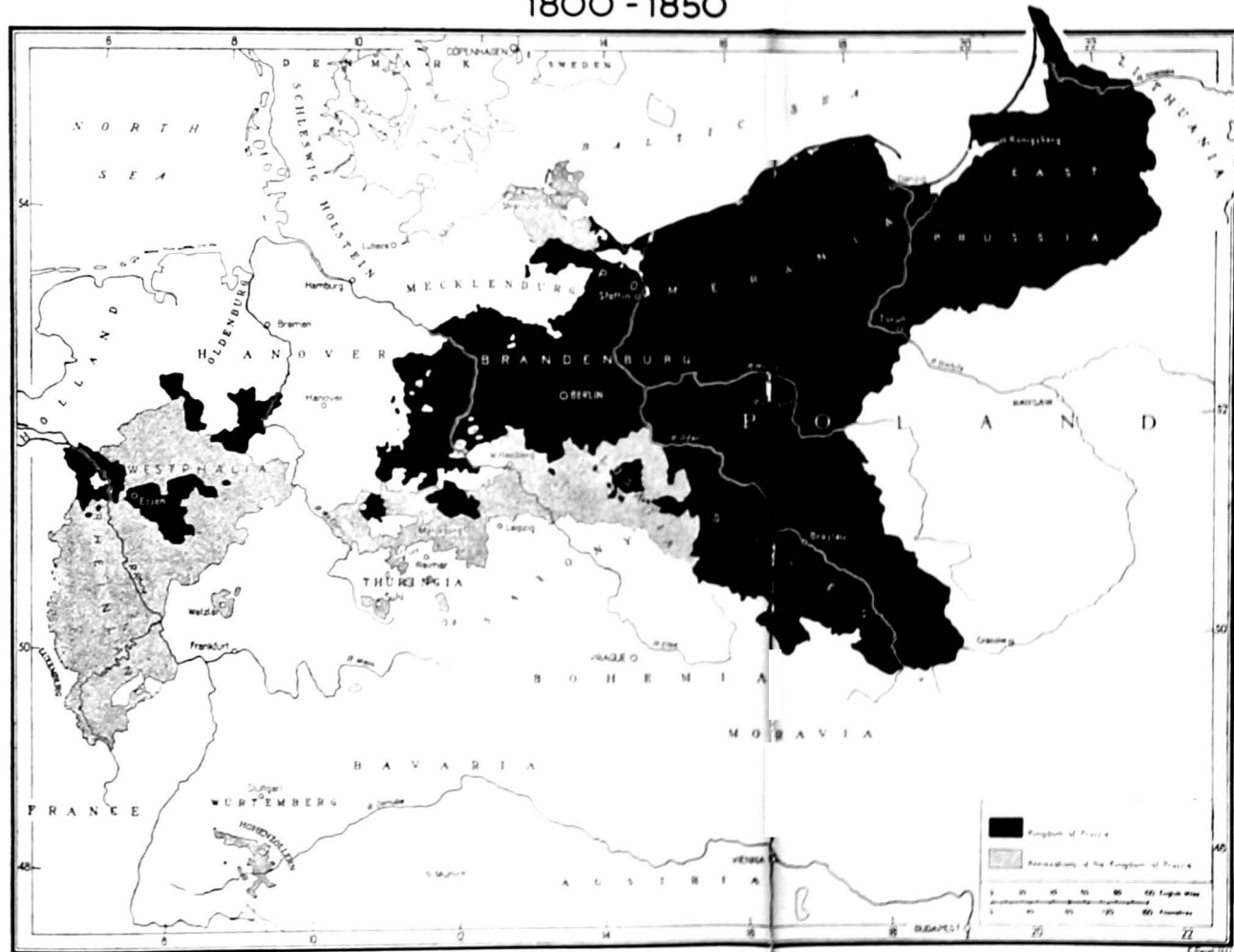
The Napoleonic wars weakened the Prussian State for a time and deprived it of some of its conquests including a part of the Polish territories out of which Napoleon created the Duchy of Warsaw. The map of Europe, however, drawn by Napoleon did not survive him. In 1815 the Congress of Vienna rearranged Europe and restored Prussia's power, greatly increasing her territories. By intrigues and bargaining Prussia obtained half of Saxony, Westphalia, the Rhineland, the remaining part of West Pomerania with the island of Rugen, the western part of the Duchy of Warsaw which had now disappeared, that is, the region called the Grand Duchy of Poznan, and a large number of small territories scattered across the German Reich including Henneberg, Ziegenrück, Schlesingen, and Münster, Paderborn, Mühlheim, Essen, Eichsfeld and Erfurt acquired in 1803.

These gains made Prussia the most powerful state within the German Reich. Legally Prussia had continued to belong to it. The German Reich kept its old form of organization through the centuries, and with time it had become merely a loose association of virtually independent states under the leadership of the Emperor. The Napoleonic Wars had shut-

tered this old organization. The Congress of Vienna, however, re-established the Reich in its former construction as a confederation of states and once more under the leadership of Austria. Unwilling to bear it, Prussia aimed at increasing her influence among the other German states in order to abolish Austrian supremacy, with the ultimate object of uniting all Germany under Prussian rule.

As Austria was the obstacle in the way of Prussian ambitions and was prepared to defend her superior position, the Prussian policy took a decidedly anti-Austrian line. So long as Austria continued to be a member of the German Confederation, Prussia could not establish her hegemony in Germany. To eliminate Austria she started a Pan-German movement and preached the necessity of dissolving the old Reich and creating a purely German nation state under the leadership of Prussia. To this new form of Prussian aggression—directed this time against the remaining Germans—opposition came not only from Austria but also from other European States now seriously concerned about the increase in the dynamic power of Prussia.

1800 - 1850



## AFTER TWO AGGRESSIVE WARS IN 1866 AND 1871 PRUSSIA SUCCEEDED IN UNITING GERMANY UNDER HER RULE.

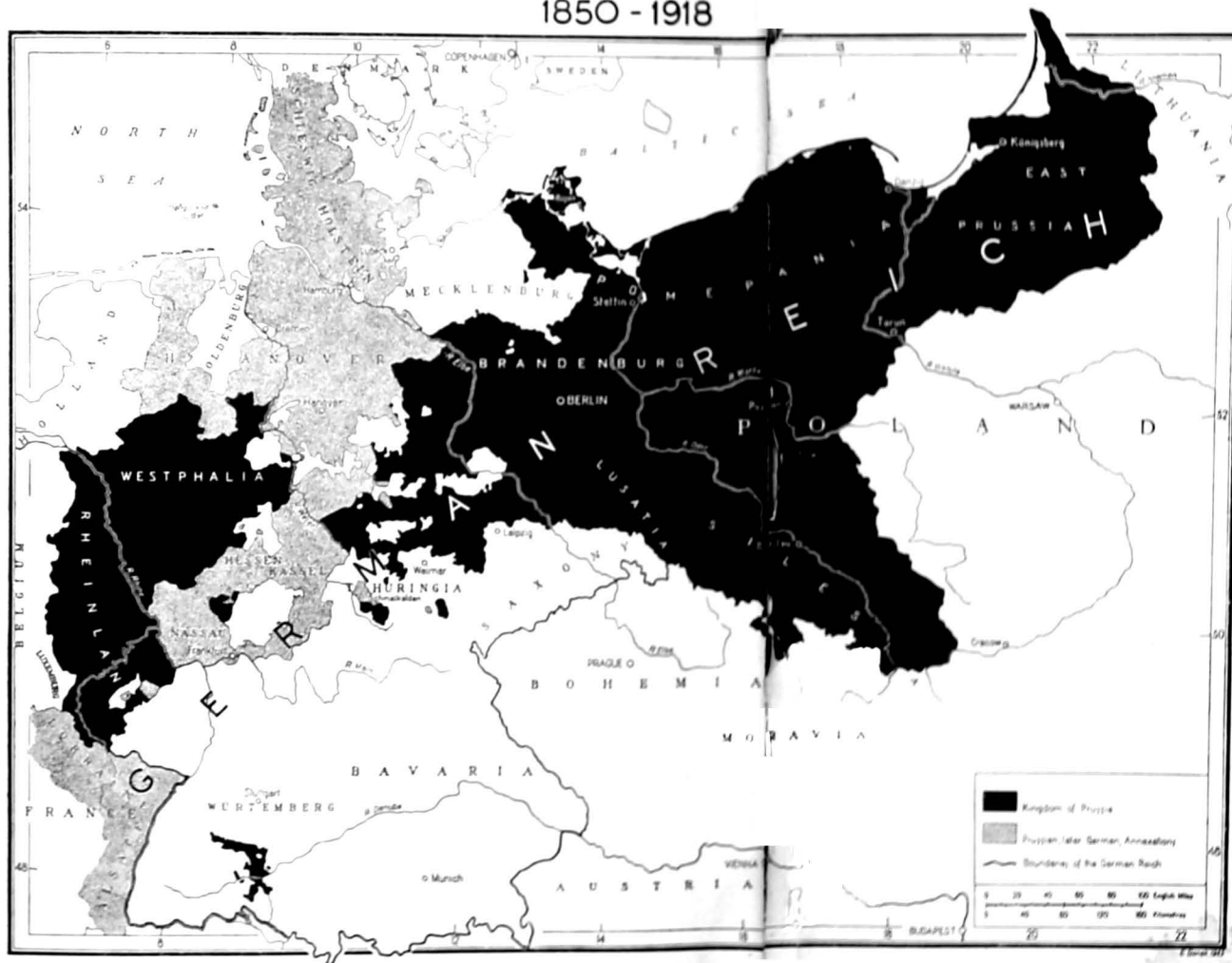
Unable to obtain supremacy over Germany by peaceful means, Prussia reverted to her traditional method of expansion—armed aggression. In 1866 she provoked a war with Austria. The immediate cause was friction between Prussia and Austria over Schleswig and Holstein. These two principalities had been ruled by the King of Denmark. In 1863 they revolted, and appealed for help to the German Confederation. Prussia seized the chance and persuaded Austria to join in war against Denmark. As a result the principalities passed under the control of Prussia and Austria in 1864. Joint rule led to conflicts. Finally, when the conflicts became very acute, Bismarck in charge now of Prussian policy, concluded an alliance with Italy and persuaded the Prussian King, William, to invade Austria. In spite of the support given to Austria by the other German states, Prussia won a decisive victory at Sadowa in 1866 and imposed on Austria a very unfavourable peace treaty. Austria agreed to relinquish her membership of the German Reich and her claims to Schleswig and Holstein. In addition to these principalities Prussia kept all the lands over-run during this war, i.e.

Hanover, Hessen, Nassau, and Frankfurt-am-Main, hitherto a free city.

Having thus eliminated Austria from the Reich, Prussia became now the most powerful member of the German Confederation. She proceeded to organize the North German lands and created a North German Confederation under her own leadership (1867). Bismarck, author of all these changes, provoked a new aggressive war against France a few years later. After France's crushing defeat in 1870 and 1871, Prussia annexed Alsace and Lorraine. At the same time she succeeded in uniting the whole of Germany. The South German States which did not belong to the 1867 Confederation but took part in the war at Prussia's side, formally declared their union with the North German Confederation in 1871. The Confederation thus became the German Empire under the hereditary rule of the Kings of Prussia. The purely national German character of this new Empire and the dominating role of Prussia within constituted a menace to the peace and security of its neighbours.



1850 - 1918



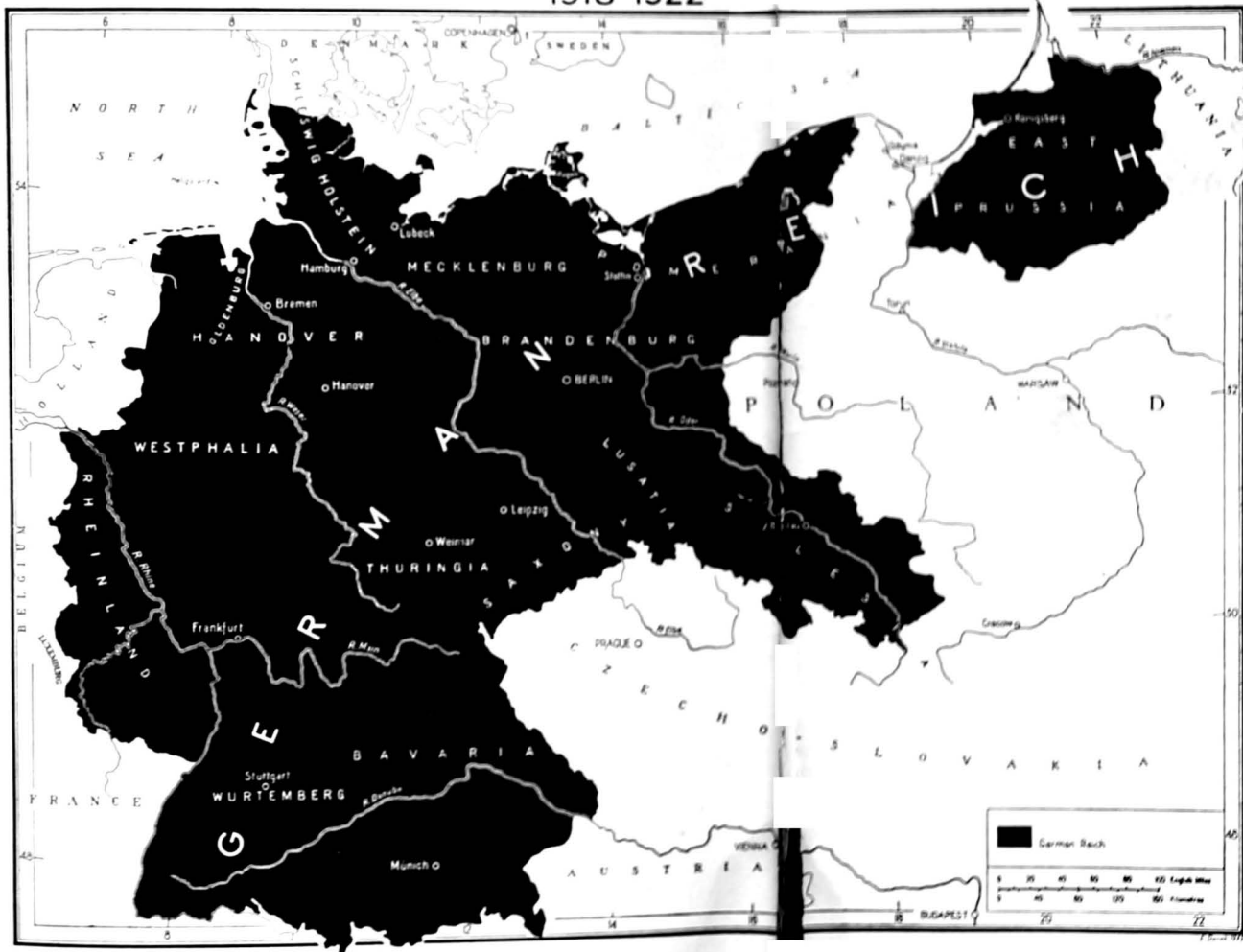
**THE GERMAN EMPIRE LED BY PRUSSIA PREPARED A WAR AND PROVOKED IT IN 1914, BUT ITS MILITARY DISASTER IN THIS WAR DID NOT BREAK THE GERMAN SPIRIT OF AGGRESSION.**

After 1871 the most powerful state in Europe apart from Germany was Russia. Prussia, now the decisive factor in the German Empire, was still pursuing the policy of the "Drang nach Osten", and it was clear that sooner or later this must produce an armed conflict with her great Eastern neighbour. Bismarck began to prepare for this eventuality long before. He managed to reconcile Germany with Austria and to conclude with her a close alliance based on the common defence against Russian and Slavonic menaces (1879). In 1881 Italy joined this alliance and thus the Triple Alliance was formed. It was directed on the one hand against France, to preserve the status quo established by the Peace of Frankfurt in 1871, and on the other hand, against Russia. Bismarck then established friendly relations with Turkey and approached Great Britain. Good Anglo-German relations, however, did not last long. Conflicting interests became evident when Germany began to seek new conquests in the colonial world in the eighties of the last century. Consciousness of the

German danger turned British policy towards Russia. After the Russo-Japanese war early in the 20th century, a formal Anglo-Russian Entente was concluded in 1907. Both countries having had similar agreements with France, thus the Triple Entente came into being; this was designed to counter balance the Triple Alliance.

Thus Germany by her aggressive policy had created against herself a strong defensive wall in Europe. But this did not make Germany hesitate in 1914 in breaking Belgian neutrality in order to attack France. The European war thus willed by Germany ended in her total defeat in 1918. The Treaty of Versailles deprived Germany of part of her former conquests but did not succeed in ending German imperialism or in changing the German spirit. In spite of all the humiliations of defeat, the lust for conquest and domination remained rooted in the German soul; the spirit of aggression was stimulated the more by the thirst for revenge.

1918-1922



## UNDER HITLER, GERMANY CONTINUES THE OLD GERMAN AGGRESSIVENESS AIMING THIS TIME AT WORLD DOMINATION.

After 1919 Germany defeated in the first World War nursed the idea of revenge. She prepared for it most carefully and systematically. In the early years after the war Germany carried on a policy of intrigue, carefully hiding her real aggressive intentions and trying to lull European disquiet. When Hitler came to power in 1933, German preparations for war were already far advanced. For a time Hitler continued also to mask his intentions, but then he soon showed his real aims by his deeds. In October, 1933, he abandoned the policy of "appeasement" and withdrew Germany from the League of Nations. After the German victory in the Saar plebiscite, conscription was introduced in Germany in defiance of the terms of the Treaty of Versailles. Thus the complement of the Germany army was increased from 100,000 to several millions. In March, 1936, the German army occupied the Rhineland; this was another breach of the Treaty according to which this region was to remain demilitarised.

Stimulated by his impunity and by the reaction in Europe to his policy, Hitler annexed Austria in March, 1938, and in October of the same year, part of Czechoslovakia inhabited by Sudeten Germans. In March, 1939, he took over the rest of Czechoslovakia and Memel. In his imperialistic folly he did not hesitate before starting a second European war; on the 1st of September 1939, Germany invaded Poland.

In the second European war the German passion for conquest appeared in its true light. Having occupied most of the European countries, Hitler and his people showed themselves to be definitely aiming at world domination. The Germans fight this war in a cruel and savage way; they violate all international laws and conventions. It was clearly seen in the occupied countries. International law permits only the occupation of hostile territories in war-time. In

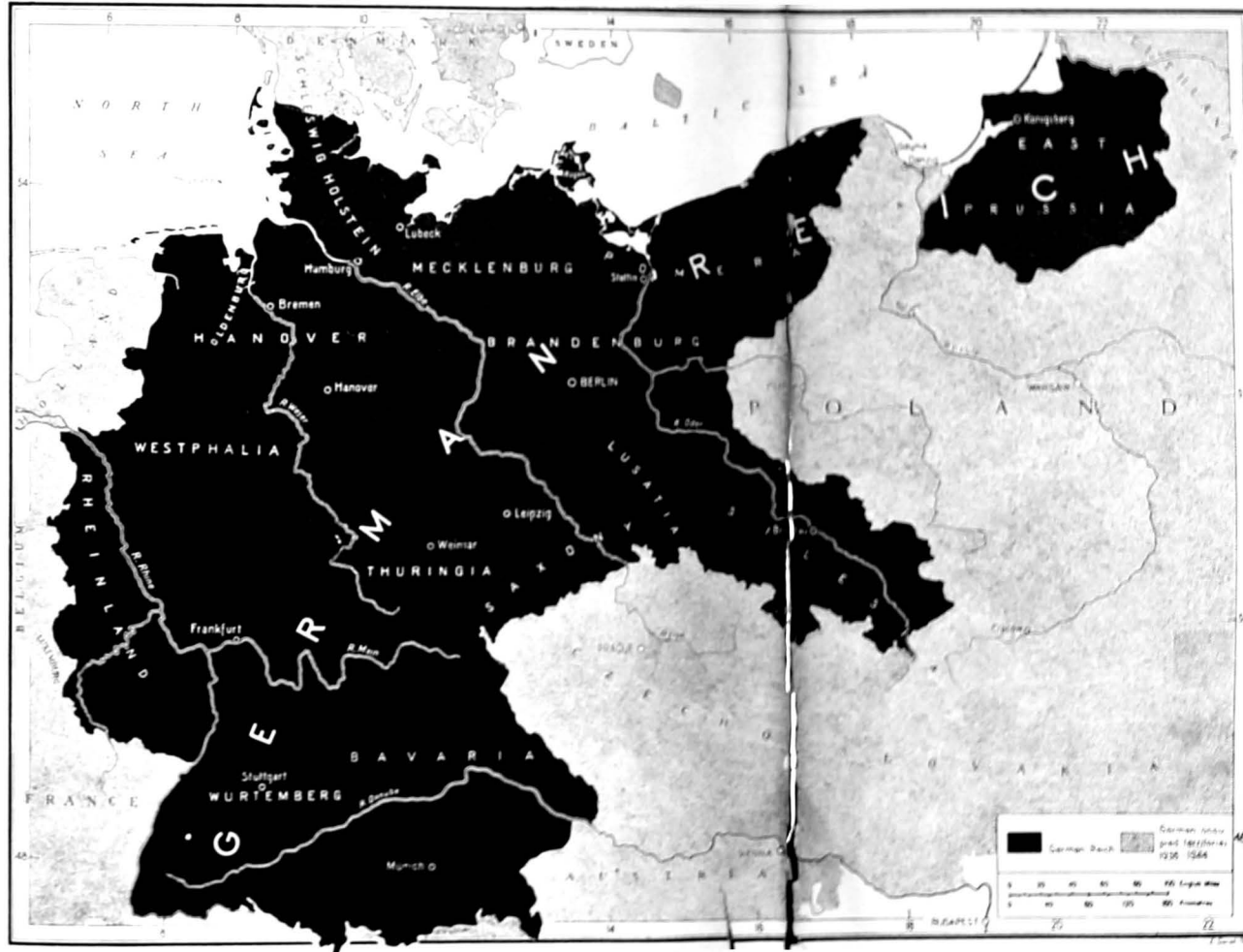
contradiction to this law Germany incorporated in the Reich whole provinces and districts of the countries she had over-run.

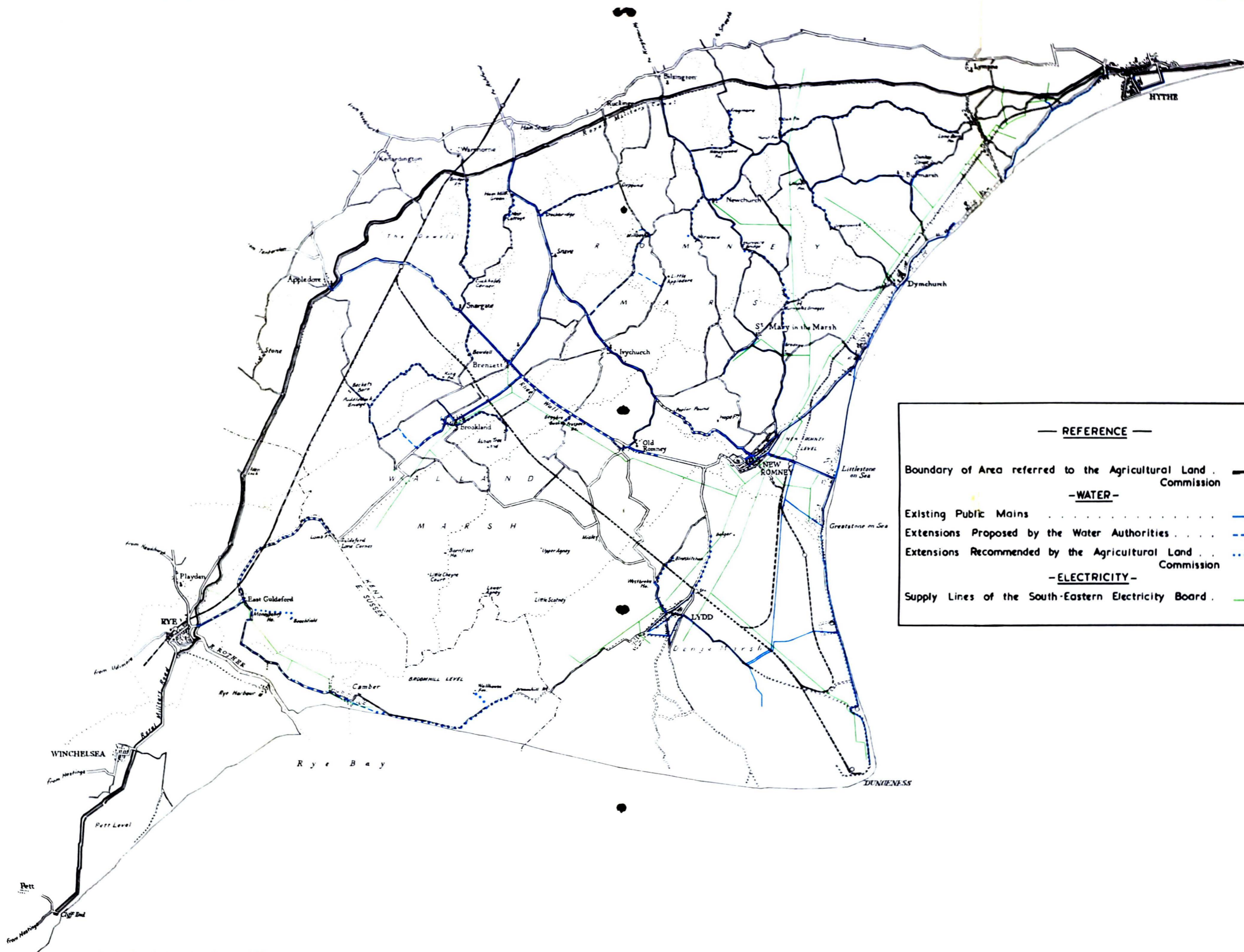
Poland was the first victim of this lawless policy of annexation. On the first day of the war, Hitler annexed the Free City of Danzig and on the 6th of October he issued a decree incorporating Silesia, Poznanian, Polish Pomerania and a large part of the Central Polish provinces. After the treacherous attack on Belgium in May, 1940, the districts of Eupen and Malmedy were incorporated; Luxemburg, Alsace and Lorraine followed in August, 1940, and in May, 1941, part of Yugoslavia, the so-called Slovenia (Kraina).

Germany treated all these territories as her own. To give them a German character immediately, all the non-German population has been deported and their homes and property given to German colonists.

Apart from these, in the occupied countries, Germany has introduced a system of government which represents the most brutal and ruthless exploitation of all their material resources and manpower to meet the needs of the army and of the German industry. The following countries were occupied (in the chronological order): Poland, Norway, Denmark, Holland, Belgium, France, Greece, Yugoslavia, Lithuania, Latvia, Estonia and part of the U.S.S.R. The lawless territorial annexations, the exploitation and terror by means of which the Germans are governing these countries today are outstanding examples of the "New Order" which Germany wants to introduce in the whole of Europe; it is nothing else but another form of German aggression. But Europe fights on—it fights for freedom and for victory over the German aggressive spirit which has been throughout history and still is today the greatest evil.

1922-1944





— REFERENCE —

Boundary of Area referred to the Agricultural Land Commission —————

— WATER —

Existing Public Mains —————

Extensions Proposed by the Water Authorities - - - - -

Extensions Recommended by the Agricultural Land Commission · · · · ·

— ELECTRICITY —

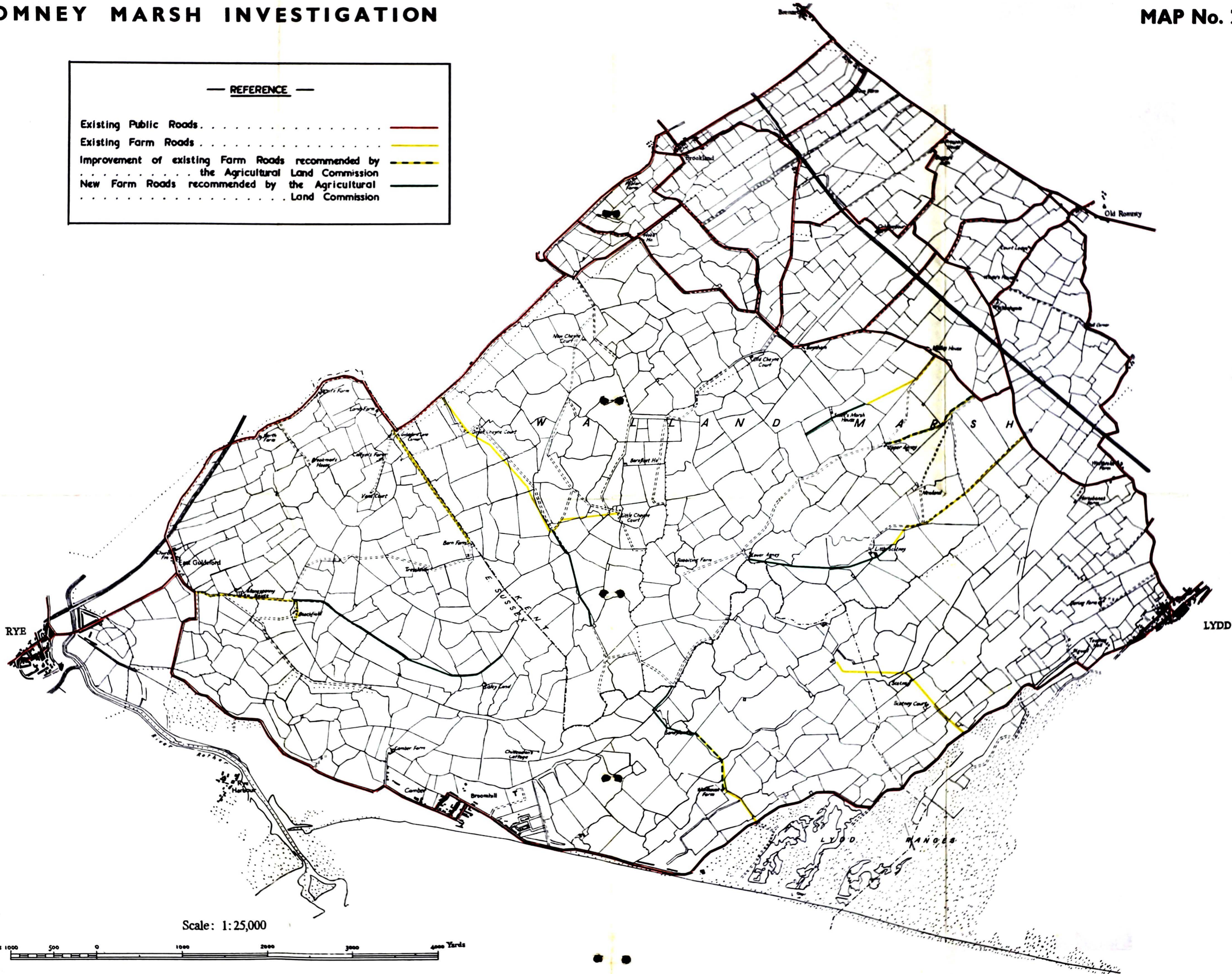
Supply Lines of the South-Eastern Electricity Board —————

Scale: One Inch to One Statute Mile-



— REFERENCE —

Existing Public Roads . . . . .	—
Existing Farm Roads . . . . .	—
Improvement of existing Farm Roads recommended by the Agricultural Land Commission . . . . .	—
New Farm Roads recommended by the Agricultural Land Commission . . . . .	—



Scale: 1:25,000



*Crown Copyright Reserved*

LONDON

PRINTED AND PUBLISHED BY HIS MAJESTY'S STATIONERY OFFICE

To be purchased directly from H.M. Stationery Office at the following addresses:  
York House, Kingsway, London, W.C.2; 13a Castle Street, Edinburgh, 1;  
39 King Street, Manchester, 2; 2 Edmund Street, Birmingham, 3;  
1 St. Andrew's Crescent, Cardiff; Tower Lane, Bristol, 1.

OR THROUGH ANY BOOKSELLER  
1949

Price 2s. 0d. net

S.O. Code No 24-172