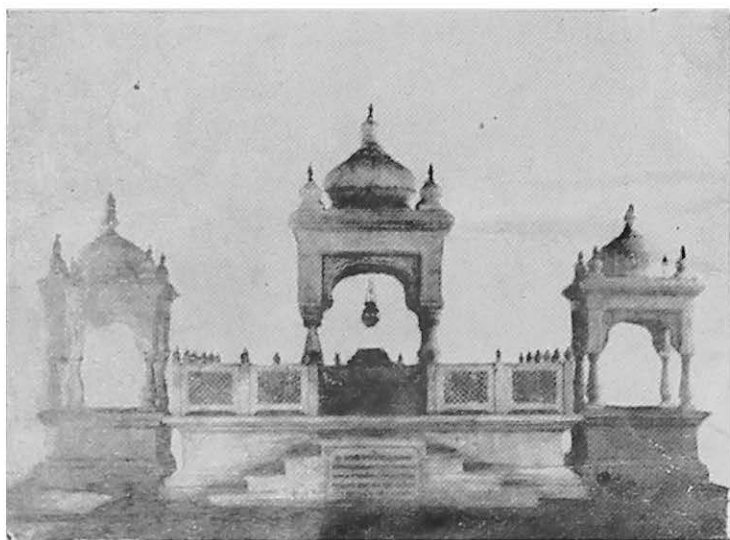


Here Came Swarajya.



**The Samadhi (Cenotaph) at Ambavde of Shri Shankaraj Narayan
(died 1712 A.D.), the Founder of the Bhor State :
remodelled in marble, by Shrimant Raja Saheb, in 1934.**

HERE CAME SWARAJ

(A guide to places of historical interest
in the Bhor State)



D. V. KALE, M. A.

Printed and Published by the Bhor State Press, Bhor.

DEDICATED TO THE SACRED MEMORY OF



**Chhatrapati Shri Shivaji Maharaj,
The founder of 'Swarajya' in Maharashtra.**

[By courtesy of Mr. V. S. Bendre]

**Raja Shrimant Sir Raghunathrao Shankarrao
Pandit Pant Sachiv, K. C. I. E.**



Who has splendidly shown the way to what should be done
by enlightened Indian rulers conscious of their historic past.

P R E F A C E

In every country there are spots held sacred owing to their association with great personalities revered by the nation and every effort is made to preserve and cherish the memories of the great national heroes, poets and great men. In a country like India, with a continuous stream of history and culture running for thousands of years, there should indeed be hundreds of places connected with its historical past. Unfortunately, however, the exact location of places connected with the great empire-builders and makers of India from century to century is not always available, owing to the great distance of time that separates an Ashoka or a Vikramaditya from the modern world. The position as regards the Maratha country and Shivaji the founder of the Maratha State is, however, quite unique in the whole of Indian history. Here are a people, who still proudly keep alive the vivid memory of their successful attempts in founding their own state and have been able to piece together every important contemporary detail of the story. They have reconstructed their history by the most modern methods. The Maratha people's pride in their past achievements, and particularly in the illustrious founder of their state and his wonderful performance, is unbounded. It is thus natural that the three-hundredth Anniversary of the glorious occasion, when first steps were taken by the youthful Shivaji, should have been the occasion of special celebrations, in course of which brochures should have been brought out, describing the historic region, which was the scene of Shivaji's early exploits. Almost the entire area is by a fortunate coincidence included within the modern state of Bhor, founded by one of his cabinet ministers. It is,

consequently, inevitable that the topography of the historical beginnings of the Maratha State should take the form of a gazetteer of the Bhor State.

To the visitor from abroad, who makes his way upcountry from Bombay through the beautiful and well-wooded Western Ghats, the country around Poona, with its bare hills and arid landscape, will strike as tame and hardly make any special appeal. But if he is able to visualise the past, with the aid of guides such as the present one, he will no doubt be fascinated beyond measure at the sight of a region where every hill and dale, fort and pass, is eloquent with the stirring happenings of a glorious past.

Mr. Kale has been a really faithful guide to the place described in the following pages, bringing out the historical role and geographical position of the forts that played such a vital part in Maratha history, very clearly before the mind's eye. He has done more and has explained the why and the wherefore of the historic happenings and the geographical surroundings. He has also given a glimpse of the more ancient past, when under the inspiration of the teachings of the Master of Peace, the hills and dales of the Deccan bristled with cultural activities, and the rich merchants endowed stupas and monasteries for the sojourn of Buddhist monks. The entire picture is completed by a few snaps of the beauty-spots and amenities around the capital of the Bhor State, which are sure to appeal to the modern visitor. Taken on the whole, Mr Kale's pocket guide-book is bound to add immensely to the pleasures of a visit to the unusually interesting area, which may be regarded as the very heart of the Maratha country, having supplied the lifeblood to the illustrious founder of the Maratha State and his associates.

This guide owes its appearance to the generous donations to the 'Hindavi Swarajya Smarak Mandal' by the present

Rajasaheb of Bhor, Raja Shrimant Sir Raghunathrao Shankarrao Pandit Pant Sachiv, K.C.I.E. The entire expenditure of the tercentenary celebrations, the inspiring memorial erected on the Cheladi site and the two guide-books prepared for the occasion, has been defrayed out of the Bhor grant. The Rajasaheb has also been pleased to order that all the principal memorials and historic spots described in this guide be preserved in proper order, and means of access to them be provided and kept in good condition. The Rajasaheb has indeed shown the way to what should be done by enlightened Indian rulers conscious of their historic past and proud of their cultural achievements, which shall ever remain among the most cherished possessions of a people struggling to resume their place among the comity of nations.

K. N. DIKSHIT,

Chairman,

1st January 1946.

Hindavi Swarajya Smarak Mandal.

CONTENTS

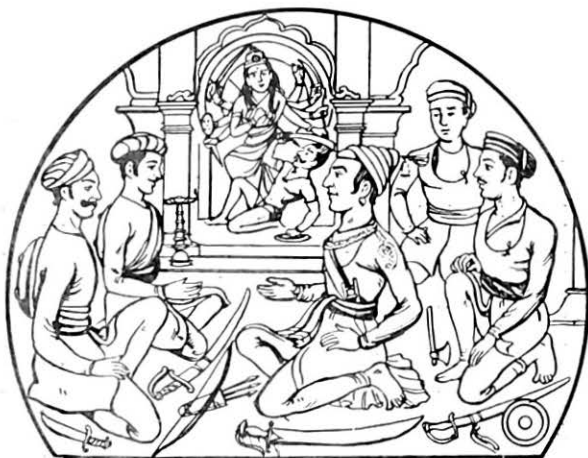
	Page
Preface	... 7
Panels of the Swarajya Stambha	... 12
Inscriptions on the Swarajya Stambha	... 14
See It For Yourself	... 17
1. Your Way Here	... 20
2. Standing Witness	... 24
3. The Royal Fort	... 27
4. The Formidable Stronghold	... 35
5. Rohida, The Beautiful	... 41
6. Rayareshwar Of The Oath	... 45
7. The First Victory	... 51
8. The Why And The Wherefore	... 54
9. The Glory That Was Bhor	... 58
10. And This Is The Capital	... 63
11. A Programme for Sightseers	... 67

MAP

A Map of the Bhor State and adjoining country showing important places referred to in the book.

(Inside Cover Page No. 3)

PANELS OF THE SWARAJYA STAMBHA.

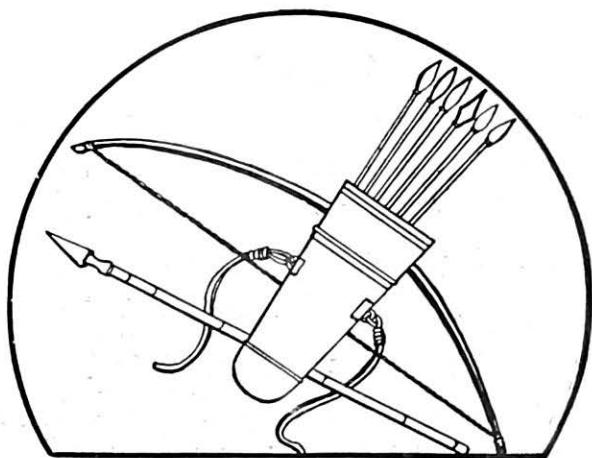


They express their cherished thoughts in the divine presence of Goddess Bhavani—an emblem of the Conception of the Grand Idea.

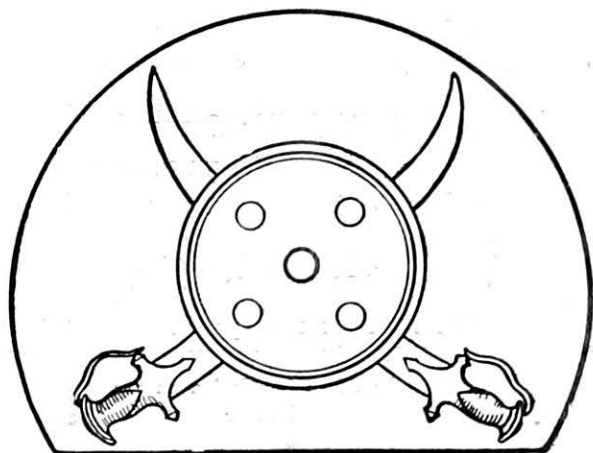


The prophetic seal of Shivaji, confidently asserting the progressive glory of Swarajya—an emblem of Ambition.

PANELS OF THE SWARAJYA STAMBHA.



The Quiver and the Bow—an emblem of Strength and Chivalry.



Cross-swords and Shield—an emblem of Power-Realisation.

INSCRIPTIONS ON THE SWARAJYA STAMBHA.

महाराष्ट्रांत छत्रपति श्रीशिवाजीमहाराजांनी
या प्रदेशांत स्वराज्याचा पाया घातला.
या घटनेच्या त्रिशतसांवत्सरिक उत्सवाचे
प्रसंगी हा स्मारकस्तंभ भोरचे अधिपति
श्रीमंत राजे सर रघुनाथराव पंतसचिव
यांनी शके १८६७ या वर्षी उभारिला.

Text of the Marathi Inscription on the
Memorial Pillar

महाराष्ट्रके अिसी प्रदेशमें श्रीशिवछत्रपति-
महाराजने स्वराज्यकी नींव डाली। अिस
घटनाके त्रिशतसांवत्सरिक महोत्सवके अव-
सरपर यह स्मारकस्तंभ श्रीराजा सर रघु-
नाथराव पंतसचिव भोरनरेशने बनवाया है।

Text of the Hindi Inscription on the
Memorial Pillar

INSCRIPTIONS ON THE SWARAJYA STAMBHA.

शाकेष्वन्धिरसाष्टचन्द्रगणितेष्वस्मिन्प्रदेशे
शुभे । यातं वर्षशतत्रयं शिवनृपस्येप्सोः
स्वराज्यं परात् ॥ इत्थं श्रीरघुनाथराज-
सचिवेनामन्त्र्य भोरेशिना । स्तम्भः श्री-
शिवभूपकीर्तिमतुलां प्रख्यापयन्नुच्छ्रितः ॥

Text of the Sanskrit Inscription on the
Memorial Pillar

This Pillar in commemoration
of the Tercentenary of the initia-
tion of Swarajya (Sovereign
Maratha State) by Chhatrapati
Shivaji the Great, was erected
by Raja Sir Raghunathrao Pant
Sachiv of Bhor, in 1946 A. D.

Text of the English Inscription on the
Memorial Pillar

ADDITIONS & CORRECTIONS

<i>Page</i>	<i>Line</i>	<i>Place</i>	<i>Correction</i>
p. 12	2	from bottom—	delete 'prophetic' and read 'prophesying' for 'asserting'.
p. 47	2, 3	from top	—read the year 1645 after the date.
p. 66	7, 8	from top	—read 'Jhenda' for 'Zenda'.
p. 68	2	from bottom—	read 'cenotaph' for 'tomb'.
p. 69	3	from bottom—	before 'from' add 'or Daru-mandap = wooden pavilion';
p. 69	9	from top	—read 'Lord of the forest' for 'Jungle god'.
p. 70	7	from top	—read 'A busy' for 'An active'.
p. 71	2	from bottom—	before 'not' add 'legend has it that this was the place in Dandakaranya, where Jatayu met his death in the struggle with Ravana';
p. 76	11	from bottom—	read 'Pavana-maval' for 'Pounmaval'.

Note :—Panels on the Swarājya-stambha printed on pp. 12-13 are only symbolic drawings; the pictures on pp. 45, 51 and 53 are imaginary compositions, drawn in conformity with certain details gleaned from contemporary references and the *Shivabharata*.
