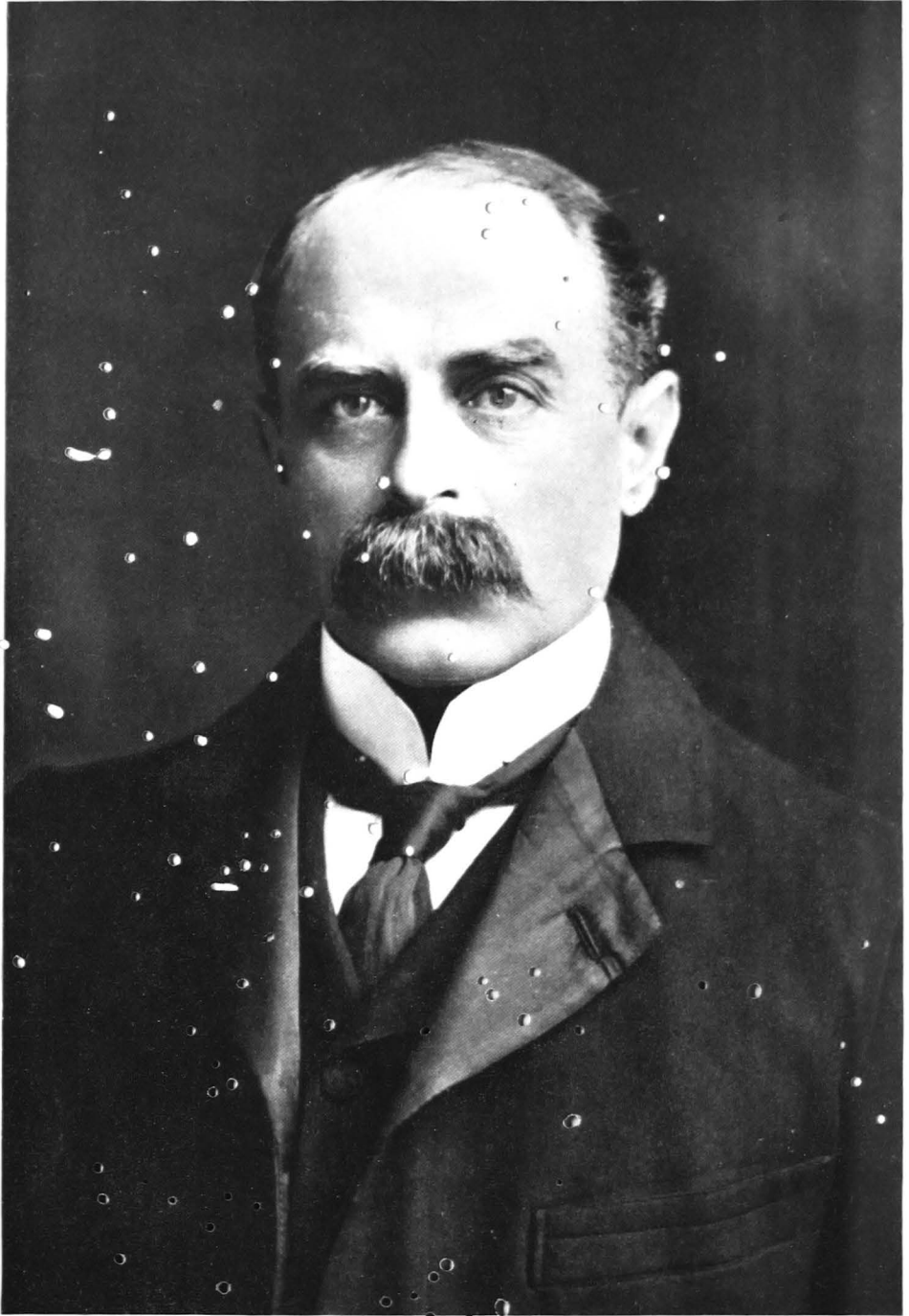


LHASA



Mr. Young & Co. and

LHASA

AN ACCOUNT OF THE COUNTRY AND PEOPLE
OF CENTRAL TIBET AND OF THE PROGRESS
OF THE MISSION SENT THERE BY THE
ENGLISH GOVERNMENT IN THE YEAR 1903-4

WRITTEN,
WITH THE HELP OF ALL THE PRINCIPAL
PERSONS OF THE MISSION,
BY
PERCEVAL LANDON
Special Correspondent of the 'Times'

πὰρ δ' ἴσαν ὠκεανῶ τε ροὰς καὶ λευκάδα πέτρην
ἠδὲ παρ' ἡελίοιο πύλας καὶ δῆμον ὀνείρων
ἦσαν.

Vol. II

HURST AND BLACKETT, LTD..
LONDON
1905

All rights reserved

CONTENTS OF VOLUME II.

CHAP.	PAGE
I.—INTERNAL HISTORY OF LHASA 1902-4	I
II.—LAMAISM	28
III.—THE RELIEF OF THE MISSION	52
IV.—THE ADVANCE TO LHASA	79
V.—THE LAST STAGE	126
VI.—LHASA: THE CITY AND THE LING-KOR	172
VII.—THE ENVIRONS OF LHASA	232
VIII.—THE POTALA AND THE CATHEDRAL	279
IX.—THE RIDE FROM LHASA TO INDIA	317
—	
APPENDIX D	343
" E	361
" F	364
" G	368
" H	376
" I	390
" K	393
" L	396

INDEX

INDEX.

- ABASSI, or Grand Lama of Sakya, i. 4.
- Abbot of Gyantse, i. 205; hospitality of, i. 217.
- Acanthis brevirostris* (Tibetan twite), i. 407.
- Accipiter nisus* (sparrowhawk), i. 406.
- Akohwan Darjilikoff. See DORJEFF.
- Akshai Bar, or Breguman (centre of Buddhist worship), ii. 265.
- Alauda arvensis* (skylark), i. 406.
- Alexander the Great, i. 82.
- Alston, Lieut., buried at Bakcham, i. 104.
- Altitudes, i. 121, 272, 276; Chumolhari, i. 85; difficulty of sighting in high, ii. 380; Himalayas, i. 258; Karo la, i. 266; ii. 86; Natu la, i. 83; Phari, i. 128; ii. 334; Plain of Milk, i. 265; plateau near Menza, i. 163; Lhasa, ii. 379; Tuna, i. 138.
- Amban (Chinese viceroy), i. 6, 248, 249, 251, 300, 304, 305; pays a state visit (ill.), ii. 193, (ill.), 197; secretary of (ill.), ii. 303.
- "Amchi" (doctor), ii. 383.
- Amitabha, or Manjusri (Tib. "Chenrezig"), the Bodisat, i. 3; ii. 353; reincarnation of, i. 5.
- Ammo chu (river), i. 36, 82, 96, 101, 103, 116, 117; ii. 25; frozen (ill.), i. 121; upper waters of (ill.), i. 120.
- Ampthill, Lord, ii. 20.
- Anas boscas* (mallard), i. 408.
- "Andkou," i. 22.
- Andrada, Antonio, ii. 206; Lamaism described by, ii. 47; travels of, in Tibet, i. 5.
- Anser indicus* (bar-headed goose), i. 408.
- Antelopes, or "Chiru" (*Pantholops hodgsoni*), i. 393.
- Anthrax, among yaks, i. 46.
- Appendices: A, i. 391-410; B, i. 411-412; C, i. 413-414; D, ii. 343-360; E, ii. 361-363; F, ii. 364-367; G, ii. 368-375; H, ii. 376-389; I, ii. 390-392; K, ii. 393-395; L, ii. 396-400.
- Arctomys himalayanus* (Tibetan marmot), i. 394.
- Arctomys hodgsoni* (Tibetan marmot), i. 395.
- "Arhar," ii. 383.
- Arundell, Lieut., author meets, at Ra-lung, ii. 327.
- Asanga, i. 348; ii. 30, 36.
- Asphodel, i. 58.
- Astley (author), i. 4, 6.
- Atisha, or Jo Ji-pal-den, King of Tibet, i. 3; ii. 161, 244.
- Atma Ram, ii. 23. •
- Author, ii. 367; arrives at Chang-lo, i. 300; at Chak-sam, ii. 324; halts at Netang, ii. 320; meets Lieut. Arundell at Ra-lung, ii. 327; pays a tribute to his servants, ii. 81; reaches Chusul, ii. 322; rides from Lhasa to India, ii. 317-40, 390-2; rides to Ta-ka-re, ii.

Author—*continued*.

- 126; takes photographs, ii. 100, 244, 246; visits buried monks, i. 217; visits Dongtse Monastery, i. 233; visits the temple of the Chief Magician, ii. 246; writes to Lord Curzon, i. 229.
- Avalokiteswara, i. 3, 5; ii. 2, 19, 353, 399; reincarnation of, i. 356.
- Azochozki, i. 29.
- BADI (fishing village), ii. 104.
- Baggage animals, ii. 154-5.
- Baikuntpur sal forest, i. 56.
- Bailey, Lieut., i. 169; ii. 236, 366; detailed for surveying service to Gartok, ii. 361.
- Baird, Capt., i. 157.
- Bakcham, i. 104; Gen. Macdonald's quarters at, i. 104; Lieut. Alston buried at, i. 104.
- Baldwin, Capt., ii. 365.
- Balk, ii. 386.
- Ba-mi-ye-she (teacher of Lamaism), ii. 33.
- Bamtso, i. 44, 140, 160, 161.
- Bar-headed goose (*Anser indicus*), i. 160, 234, 408.
- Batang, ii. 15.
- Bayley, Mr. C. B. (correspondent), ii. 367.
- Begonias, i. 58.
- Beligatti, Cassiano, ii. 209.
- Bell, Capt., ii. 365.
- Bennett, Lieut., ii. 366.
- Bethell, Lieut., ii. 366.
- Bethune, Capt., i. 276; death of, i. 270.
- "Beun-pa" (aboriginal devil worshippers), i. 230, 351.
- Beynon, Major, ii. 364.
- Bharal (*Ovis nahura*), i. 392.
- "Bhusa," i. 161.
- Bhutan, i. 13, 92.
- Bhutias, i. 81.
- Bignell, Lieut., ii. 364.
- Birds of Southern Tibet:
- Bar-headed goose (*Anser indicus*), i. 160, 234, 408; black-eared kite (*Milvus melanotis*), i. 405; blood pheasant (*Ithagenes cruentus*), i. 407; blue-hill pigeon (*Columba rupestris*), i. 407; calandra lark (*Melanocorypha maxima*), i. 406; cinnamon sparrow (*Passer cinnameus*), i. 406; common teal (*Nettion crecca*), i. 408; coot (*Fulica atra*), i. 408; crag-martin (*Ptyonoprogne rupestris*), i. 406; eagle-owl (*Bubo ignavus*), i. 406; Garganey teal (*Querquedula circia*), i. 408; goosander (*Mergus castor*), i. 408; Himalayan griffon vulture (*Gyps himalayensis*), i. 405; hobby (*Falco subbuteo*), i. 406; hoopoe (*Upupa epops*), i. 406; horned lark (*Otocorys elwesi*), i. 406; kestrel (*Falco tinnunculus*), i. 406; lämmergeier (*Gypaëtus barbatus*), i. 403; magpie (*Pica bottanensis*), i. 406; mallard (*Anas boschas*), i. 408; monal (*Lophophorus refulgens*), i. 407; moorhen (*Gallinula chloropus*), i. 408; Pallas's sea-eagle (*Haliaeetus leucoryphus*), i. 405; pintail (*Dafila acuta*), i. 408; raven (*Corvus corax*), i. 403; red-billed chough (*Pyrrhonorax graculus*), i. 406; red-shank (*Totanus calidris*), i. 408; redstarts (*Ruticilla rufiventris* and *R. hodgsoni*), i. 406; red-throated ouzel (*Merula ruficollis*), i. 406; rosefinches (*Propasser pulcherrimus* and *Carpodacus severtzovi*), i. 406; ruddy sheldrake, or Brahminy duck (*Casarca rutila*), i. 408; sand-grouse (*Syrhaptes tibetanus*), i. 407; sand-martin (*Cotile riparia*), i. 406; shoveller (*Spatula clypeata*), i. 408; skylark (*Alauda arvensis*), i. 406; snipes (*Gallinago solitaria* and *G. stenura*), i. 408; snow or mountain finches (*Montifringilla adamsi*, M.

- blanfordi* and *M. ruficollis*), i. 407; snow-partridge (*Lerwa nivicola*), i. 407; snow-pigeon (*Columba leucopota*), i. 407; sparrowhawk (*Accipiter nisus*), i. 406; swallow (*Hirundo rufula*, *subsp.*), i. 406; swift (*Cypselus apus*), i. 406; Tibetan partridge (*Perdix hodgsoniæ*), i. 407; Tibetan snow-cock (*Tetraogallus tibetanus*), i. 407; Tibetan twite (*Acanthis brevirostris*), i. 407; tree-sparrow (*Passer montanus*), i. 406; tufted pochard (*Nyroca fuligula*), i. 408; turtle-dove (*Turtur orientalis*), i. 409; wag-tail, i. 406; white-eyed pochard (*Nyroca ferruginea*), i. 408; willow-warblers (*Phylloscopus affinis*), i. 406; wryneck (*Iynx torquilla*), i. 407. See also under respective headings.
- Black-eared kite (*Milvus melanotis*), i. 405.
- "Black Expanse" (China), i. III.
- Black stone of Mukden, i. I.
- Blanford, Dr., i. 392, 394.
- Blavatsky, Mme., ii. 31-2.
- Bliss, Capt., ii. 365.
- Blood pheasant (*Ithagenes cruentus*), i. 407.
- Blue-hill pigeon (*Columba rupes-tris*), i. 407.
- Blue-rock pigeon (*Columba livia*), i. 407.
- Bodisats, i. 237; ii. 36; reincarnation of, ii. 50.
- Bogle, Mr. George, i. 10-14, 92, 159, 235; note of, in British Museum, i. 411; travels of, in Tibet, i. 12, 13.
- Bolka, i. 107; view of (ill.), ii. 378.
- Bonvalot, M., i. 24.
- Boone, Lieut., ii. 366.
- Boro-Bodoer, vihara of, i. 209.
- Bos grunniens* (wild yaks), i. 346, 396.
- Bo-tree, i. 368.
- Bower, Capt., i. 24; ii. 23.
- Brahmaputra, ii. 324.
- Brahminy duck, or ruddy shel-drake (*Casarca rutila*), i. 408.
- Brander, Col., i. 218, 248, 269-71, 292, 297, 322, 334; ii. 56, 365; clears Red Idol Gorge, i. 175; encamps on Nichi-kang-sang, i. 265; expedition of, to clear the Karo la, i. 251; reaches Ra-lung, i. 256; reconnoitres at Karo la (ill.), i. 273; returns to Gyantse, i. 278; takes Pala, i. 314-321.
- Breguman. See AKSHAI BAR.
- Bretherton, Major, i. 36, 53; collects foodstuffs, i. 183; organises transport, i. 49; drowned at Chak-sam ferry, ii. 124.
- British Government, i. 36, 142.
- Brockman, Capt. D., ii. 337.
- "Bubble" and "Squeak" (jingles), i. 316; ii. 67.
- Bubo ignavus* (eagle-owl), i. 406.
- Buddha, i. 201, 210, 222, 239, 356, 357, 369, 375; ii. 28, 37, 132, 311; at Jang-kor-yang-tse (ill.), ii. 137; coloured plate facing p. 114, vol. i.
- Buddhism, i. 230, 304, 347, 369; ii. 51, 190; characteristics of, ii. 44; in Tibet, ii. 28; introduction of, in Tibet, ii. 29.
- Burial customs in Tibet, ii. 389.
- Buried monks of Nyen-dé-kyi-buk, i. 217, 225, 348; Capt. O'Connor and author visit the, i. 217; story of the, i. 226.
- Burne, Col., ii. 57.
- Burney, Lieut., ii. 67.
- "Butala" (castle of the Buddhist Pope, 1662), i. 6.
- Bushell, Dr., ii. 384-5.
- Buxar, i. 92.
- CALANDRA LARK (*Melanocorypha maxima*), i. 406.
- Camp at New Chumbi, i. 52.
- Campbell, Col., ii. 67, 75, 365; plan of, to dislodge Tibetans, ii. 69.

- Candler, Mr. (*Daily Mail* correspondent), i. 149; ii. 367; left hand amputated, i. 155; returns to Darjeeling, i. 155; wounded at Guru, i. 149.
- Carey, Lieut., ii. 366.
- Carpodacus severtzovi* (rosefinch), i. 406.
- Casarca rutila* (Brahminy duck, or ruddy sheldrake), i. 408.
- Cervidæ*, i. 396.
- Cervus affinis* ("shao," or Tibetan stag), i. 396, (ill.) 397, (ill.) 399.
- Chagna Dorje, ii. 312.
- Chag-pa (Dépen), ii. 56.
- Chagpo-ri, ii. 178, (ill.) 181, 222, 302.
- Chak-sam ferry, i. 280; ii. 108; author at, ii. 324; despatching a loaded ferry boat at, ii. 119; embarking mules at (ill.), ii. 117; encampment at (ill.), ii. 125; Major Bretherton drowned at, ii. 124; promontory at (ill.), ii. 121.
- Chak-sam Monastery (ill.), ii. 113; gompa at, ii. 119.
- Chalu, i. 159; expedition reaches, i. 161; situation of, i. 161.
- Champi-tang, bungalow at, i. 88; ii. 337
- Champo (the Buddha to come), ii. 268.
- Chandra Das, i. 209; ii. 104.
- Changan, or Hsia-Fu, i. 2.
- Chang-lo, i. 179, 184, 192, 229, 233, 282, 298, (ill.) 299, (ill.) 307, 312, 322, 326; Captain O'Connor and author arrive at, i. 300; Col. Younghusband moves into, i. 183; covered way between, and Pala (ill.), i. 341; entrance to (ill.), i. 285; inside compound at (ill.) i. 185, (ill.), i. 289, (ill.) i. 337; iris plantation at (ill.), i. 342; mess-room of Mission at (ill.), i. 283; night attacks on, i. 287-98, 329-33; occupied by Col. Younghusband, i. 245; quarter-deck at (ill.), i. 329; siege of, i. 325.
- Changu, i. 78; ii. 337; between Lagyap and (ill.), i. 77; bungalow at, i. 75; heights of, i. 258.
- Changu Lake, i. 72, (ill.) i. 79; dimensions of, i. 72; dwarf rhododendrons at, i. 79.
- "Chanzi," i. 220.
- Chao, Col., i. 48.
- Charms, i. 351, (ill.) 353, 375.
- Chat-sa, monastery of, i. 126.
- Chema (pr. "Pé-ma"), i. 88, (ill.) 97, 98, 365; Mme. Dordém's house at (ill.), i. 99; Norzan Kazi's house at (ill.), i. 99.
- "Chenna dal," ii. 383.
- Cheri, column halts at, ii. 176.
- "Chiammay Lacus," i. 7.
- Chiangchun Pass, ii. 296.
- Chichester, Lieut., ii. 366.
- Chief Magician's Temple at Lhasa, photogravure facing p. 250, vol. ii.; doors of the, coloured plate facing p. 256, vol. ii.; interior of the (ill.), ii. 259; painted portico in the (ill.), ii. 255; throne in the, photogravure facing p. 258, vol. ii.
- Chi-kyap Kenpo, ii. 100.
- Chi-lang, i. 219.
- Chinese Government, i. 39.
- Chinese Residency in Lhasa (ill.), ii. 203; description of, ii. 204.
- Ching, Prince, ii. 13.
- Chingshui, ii. 296.
- "Chiru" antelopes (*Pantholops hodgsoni*), i. 393.
- "Chit" (letter of recommendation), ii. 387.
- "Chi-u-teb-tok" (willow warbler), i. 409.
- Chola Kusho, ii. 289.
- Chorten-karpo wall, or White Cairn, i. 103, III, II2.
- Chos-kor Plain, ii. 3.
- "Chota Billy" (jingal), i. 335.
- Chow-chow (Asian dog), i. 400.
- "Chuba" (tea), i. 362.

- Chu-ji-kang (the garden of the classics), ii. 201.
- Chumbi, i. 75, III; camp at, i. 101; expedition reaches, i. 48; in midwinter (ill.), i. 113; jong at, i. 48; Macdonald leaves, i. 136; stores at, i. 53; women of, i. 107.
- Chumbi Valley, i. 44, 84, 97, 101, (ill.), 122, 123, 187, 228, 246, 386; path down the (ill.), ii. 379; Rinchengong bridge in the (ill.), i. 93; view of (ill.), i. 109; "White Rock" (Takarpo) of the, i. 119; women labour in the (ill.), i. 383.
- Chumiumo (mountain range), ii. 333.
- "Chu-mi shenga," i. 139.
- Chumolhari (mountain), i. 84, 125, 126, 133, 136, 164; ii. 333; alt. of, i. 85.
- Chung-ssu-kang (main street of Lhasa), ii. 201.
- Chusul, i. 305; ii. 144, 147; author reaches, ii. 322; view of, (ill.), 149.
- Chyando, ii. 13.
- Cinnamon sparrow (*Passer cinnamomeus*), i. 406.
- Coleridge, Lieut., ii. 366.
- Collingridge, Lieut., ii. 366.
- Colthurst, Lieut., ii. 366.
- Columba leuconota* (snow pigeon), i. 407.
- Columba rupestris* (blue-hill pigeon), i. 407.
- Column. See EXPEDITION.
- Commissioner. See COL. YOUNG-HUSBAND.
- Common teal (*Nettion crecca*), i. 408.
- Coningham, Capt., ii. 365.
- Conolly, Capt., ii. 366.
- Convoy yaks in a blizzard, photograph facing p. 136, vol. i.
- Cooke, Capt., ii. 365.
- Coolie corps, i. 52.
- Cooper, Lieut.-Col., ii. 365.
- Goot (*Fulica atra*), i. 408.
- Corbet, Miss Sybil, ii. 377.
- Corvus corax* (raven), i. 403.
- Cotile riparia* (sand-martin), i. 406.
- Council chamber of Sha-pes, ii. 357.
- Cowie, Capt., ii. 366.
- Crag-martin (*Ptyonoprogne rupestris*), i. 406.
- Crafter, Capt., killed at Tse-chen, ii. 60.
- Cromer, Lord, i. 306.
- Crown Prince of Sikkim, i. 361.
- Cuckoo (*Cuculus canorus*), i. 407.
- Cullen, Capt., i. 270, 338.
- "Cup-marks," ii. 163; outside Lhasa (ill.), ii. 162.
- Currie, Lieut., ii. 365.
- Gurzon, Lord, i. *frontispiece*, 35, 36, 191; ii. 7, 20, 400; author writes to, i. 229; policy of, i. 190, 306; ii. 21; reasons for sending Mission, ii. 21.
- Cypselus apus* (swift), i. 406.
- DAFILA ACUTA (pintail), i. 408.
- Dak (mail) runners, i. 309; rescued by Capt. Ottley, i. 312.
- Dalai Lama ("Ocean of Learning"), i. 3, 5, 32, 33, 43, 48, 95, 187-9, 248, 251-2, 302, 304-5, 309, 347, 355; ii. 5, 14; diplomacy of the, i. 35; flies from Lhasa, ii. 18; policy of, ii. 7; refuses transport to the Amban, ii. 13; reincarnation of, ii. 4.
- Dalmahoy, Lieut., ii. 106, 325.
- Dam, Lo zang rin-chen tsangyang gya-tso beheaded at, ii. 398.
- Dam dim, ii. 25.
- "Dang-to" ("cold - warm" = temperature), i. 367.
- Daniell, Lieut., ii. 366.
- Daphne cannabina*, i. 117; paper made from, i. 115.
- Darjeeling, i. 44; tea-planters of, ii. 26.
- Davys, Lieut., ii. 366.
- Deb Raja, or King of, Bhutan, ii. 62.

- Debung monastery, i. 29 ; ii. 175, (ill.) 177, 230, 245, 265-7.
 Dé chu, ii. 380.
 Deities of Tibet, ii. 37.
 Deodora, i. 86.
 Dépens (generals), ii. 357.
 Desideri, Hippolito, i. 9 ; ii. 208, 267.
 Devil-worship, ii. 36.
 Di chu, ii. 25.
 "Di-di-ku-ku" (turtle-dove), i. 409.
 Dingri, ii. 356.
 Dochen, i. 159.
 Dog-mi-pal-gi-ye-she (teacher of Lamaism), ii. 33.
 Dolma jang (blue-faced goddess), i. 111 ; ii. 37.
 "Dongs" (wild yaks), i. 197.
 Dongtse, i. 218, 219, 236, 238, 248, 251, 284 ; monastery of, i. 233 ; ii. 55 ; occupied, ii. 76.
 Donyer, chenpo (chamberlain), ii. 291.
 Dor-dém, Lady, i. 365 ; house of, at Chema (ill.), i. 99.
 Do-ring (Tibetan historical relic), i. 1 ; ii. 292 ; coloured plate of the, facing p. 292, vol. ii. ; old treaty on the, i. 1 ; translation of the, ii. 295, 384.
 "Dorje" (instrument of power), i. 230.
 Dorje Phagmo ("pig-goddess"), i. 126.
 Dorjjeff (Mongolian Buriat lama and adventurer), i. 29, 35, 41, 188, 284, 303, 356 ; ii. 4-6, 266, 309 ; aliases of: (Ghomang Lobzang, i. 30 ; Ngaku-wang-dorje, i. 30 ; and Akohwan Darjilikoff, i. 31) ; brings rifles to Potala, ii. 10 ; distributes gifts, ii. 8 ; influence of, wangs, ii. 15 ; intrigues with Russian and Lhasan authorities, i. 31 ; journeys to St. Petersburg, i. 31-3 ; policy of, i. 32, 187 ; ii. 5.
 D'Orleans, Prince Henri, i. 24.
 Dota, plain of, i. 122, 125 ; frozen waterfall at (ill.), i. 123.
 Dowgago, i. 62.
 Dub-chen-gyal - wo - chang - chub (teacher of Lamaism), ii. 34.
 "Du-kang," i. 221.
 Dumu tso (ill.), ii. 99.
 Dunlop, Major, i. 149 ; ii. 365 ; wounded at Guru, i. 149.
 "Du-nyi" (tea), i. 362.
 Durbars, at Gyantse, ii. 65 ; at Nagartse, ii. 101.
 "Du-tang" (tea), i. 362.
 Dzara, ii. 18, 87.
 Dzungarian raid, i. 6.
 EAGLE-OWL (*Bubo ignavus*), i. 406.
 Eagles, Himalayan, ii. 326.
 Easton, Capt., ii. 365.
 Edelweiss, i. 160.
 "Ekka" (light two-wheeled cart), ii. 156, 332.
 Elliott, Capt., ii. 364.
Equus hemionus ("kiang," or wild ass), i. 391.
Equus onager v. indicus (wild ass), i. 392.
 European visitors to Lhasa, i. 9-25.
 Eusa-ka, i. 101, 102.
 Examples of Tibetan work, i. (ill.), 377, (ill.) 379.
 Expedition, i. 47 ; arrives at Chalu, i. 161 ; at Chumbi, i. 48 ; halts at Cheri, ii. 176 ; halts at Menza, i. 163 ; marches on Lhasa, ii. 151 ; moving down Karo chu gorge (ill.), ii. 87 ; officers of, who reached Lhasa, ii. 364-7 ; reaches Phari, i. 136 ; reaches Yatung, i. 47 ; return of, see Appendix E, ii. 361 ; route of, arranged, i. 46.
 FALCO SUBBUTEO (hobbie), i. 406.
Falco tinnunculus (kestrel), i. 406.
 Fan, ii. 296.
Felis isabellina and *F. lynx* (lynxes), i. 393.

- Felis manul* (Pallas's cat), i. 393.
Felis uncia (snow leopard), i. 393.
 Field mice, i. 395.
 Fisher, Capt., ii. 365.
 "Five beauties of Lhasa" (*i.e.*, the Lu-kang lake; Lha-lu house, or Tashi-linga; the Chu-ji-kang, garden of the classics; Yutok Sampa, or Liu-li-chiao; and the main street, Chung-ssu-kang), ii. 201, 205.
 Fletcher, Mr., i. 25.
 Folk-lore of Tibet, ii. 368.
 Forbidden City. See LHASA.
 Forest fire near Kata-tsang (ill.), i. 105.
 "Four Gates" (village), i. 252, 280.
 Fowling-piece found at Pala (ill.), i. 15.
 Foxes (*Vulpes alopec v. flavescens* and *V. ferrilatrus*), i. 394; ii. 84.
 Franklin, Dr., ii. 366; work of, among wounded Tibetans, i. 157.
 Frescoes, at Palkhor choide (ill.), i. 215; at Sinchen Lama's apartments (ill.), i. 241, 370.
 Freyre, Manuel, i. 9; ii. 208.
 Frontispiece to Vol. I., Lord Curzon.
 Frontispiece to Vol. II., Col. Sir Francis E. Younghusband, K.C.S.I.
Fulica atra (coot), i. 408.
 Fuller, Major, ii. 365.
 "Fylfot" (swastika), i. 351.
 GABET, JOSEPH, i. 22.
 Gaden monastery, i. 48; ii. 1, 265, 355; Shar-tse abbot of, ii. 3.
 Galinka, i. 112; grazing at, i. 116; situation of, i. 116.
Gallinago solitaria (solitary snipe), i. 408.
Gallinago stenura (pintail snipe), i. 408.
Gallinula chloropus (moorhen), i. 408.
 Gangtok, i. 47, 62, 98, 364; residency at, i. 63, (ill.) 67; rhododendron trees near (ill.), i. 69.
 Garganey teal (*Querquedula ciria*), i. 408.
 Garstin, Lieut., i. 314, 316, 317; killed at Pala, i. 318.
 Gartok, ii. 19, 361.
 "Garuda" (bird), i. 368.
 "Gau-o" (trinket), i. 231.
 Gautama, i. 91; 198, 348, 355, 371; ii. 310.
 Gautso in Chumbi Valley, photograph facing p. 118, vol. i.
 Gaya, i. 349; ii. 29, 50.
Gazella picticaudata (gazelle or goa), i. 393; ii. 84.
 Gazelle, or goa (*Gazella picticaudata*), i. 393; ii. 84.
 Gedun-tubpa (Grand Lama of Tashi-lhunpo), i. 5; ii. 351.
 Gelukpas, or Yellow Cap sect, i. 4, 5, 205; ii. 351.
 Genghiz Khan, i. 82, 158.
Gerbera Jamesonii (sunflower), ii. 89.
 Gesur Yeshe Wang-gyuk, i. 142.
 Ghomang Lobzang. See DOR-JIEFF.
 Ghoom Station, ii. 339.
 Giao-gong, i. 36, 39.
 Gnathong (ill.), i. 47; Tibetan pony corps bolts at, i. 48.
 Goa, or gazelle (*Gazella picticaudata*), i. 393; ii. 84.
 Gobshi, i. 228, 251, 279, 282; ii. 58, 82; crops at, ii. 327; description of, i. 229; photograph facing p. 250, vol. i.
 Gobshi, Little, i. 228; rug factory at, i. 228.
 "Gob-sorg," i. 307.
 "Golden Army" (monkish reserve), ii. 18.
 Gompa (temple), i. 169, 198; altar in, at Gyantse Jong (ill.), i. 201.
 Gom-tang, i. 258; ii. 84.
 Gong-kar, i. 236; jong at, i. 240; ii. 144.
 Goosander (*Mergus castor*), i. 408.

- Go-tang, i. 107.
- Grand Lama of Lhasa. See DALAI LAMA.
- Grant, Lieut., ii. 73, 75, 365; gallantry of, ii. 73; leads storming party at Gyantse Jong, ii. 70.
- Great Tibetan sheep (*Ovis hodgsoni*), i. 392.
- Grueber, Father Johann, i. 6; ii. 285.
- Gurdon, Lieut., clears the Gurkha post at Chang-lo, i. 312; death of, ii. 67.
- Gurkhas (8th), i. 47, 146, 147, 150, 175-6, 248, 251; ii. 58; and Pathans capture Tse-chen, ii. 59.
- Guru, i. 50; carnage at, i. 150; column halts at, i. 159; conference at (ill.), i. 143; outbreak at, i. 149; Tibetans in strength at, i. 50.
- Guru Rinpoche (another name for Pādma Sambhava, a Buddhist saint), i. 2, 355; ii. 33, 383.
- Gurjun, i. 58.
- Guthrie (Moorcroft's assistant), ii. 386.
- Gya (fishing village), ii. 104.
- "Gyalings" (clarinets), i. 381.
- "Gyalpo" ii. 15.
- "Gyal-tsan" (canopy), ii. 289.
- Gyal-wa. See DALAI LAMA.
- Gyal-wo-lo-deu (teacher of Lamaism), ii. 34.
- Gyantse, mentioned, i. 44, 164, 170, 232, 233, 244, 245, 248-51, 281, 291, 302, 305, 326; ii. 25; abbot of, i. 205; Col. Brander returns to, i. 278; eastern part of (ill.), i. 206; iris wood at, photogravure facing p. 344, vol. i.; Jong-pen of (ill.), i. 179; monastery at, i. 193; political situation at, i. 184, 189; shopping in, i. 246; surrounded by Tibetans, i. 269; view of (ill.), i. 207; Tibetans in force round, ii. 55.
- Gyantse Jong, i. 178, 285; ii. (ill.) 71, (ill.) 75; a gigantic granary, i. 180; altar of gompa in (ill.), i. 201; compared with Mont St. Michel, i. 193; English flowers at, i. 205; from Chang-lo bridge, coloured plate facing p. 322, vol. i.; gateway and buildings of (ill.), i. 194; great gateway of, coloured plate facing p. 196, vol. i.; height of, i. 193; inner gateway of (ill.), i. 203; jingal embrasures at (ill.), ii. 77; kyil-kor of the temple in (ill.), i. 202; looking west from (ill.), i. 344, main approach to (ill.), i. 199; photogravure facing p. 194, vol. i.; stores at, i. 198; storming of, ii. 73; stuffed yaks at (ill.), i. 197; surrendered by General Ma (ill.), i. 181; view of, from N.E. (ill.), i. 195.
- Gyantse Plain (ill.), i. 294, (ill.) i. 295; burning houses on (ill.), i. 313.
- "Gyan-tsen," i. 131; ii. 132, 235.
- Gya-tso (surname of the Dalai Lamas). See DALAI LAMA.
- "Gye-ba" (tea), i. 362.
- Gye-ten, i. 101.
- Gylongs, ii. 362.
- Gypaetus barbatus* (lämmergeier), i. 403.
- Gyps himalayensis* (Himalayan griffon vulture), i. 405.
- HADOW, Lieut., i. 274, 322; ii. 365.
- Haliaeetus leucoryphus* (Pallas's sea-eagle), i. 405.
- Han, ii. 296.
- Hare, woolly (*Lepus oiostolus*), i. 160, 394.
- Hart, Lieut., ii. 365.
- Hastings, Warren, i. 10, 13.
- Hayden, Mr., i. 40, 43; ii. 116, 294, 364.
- Hedin, Sven, i. 25; ii. 22; story by, ii. 377.

- Heliograph at Tang la, i. 52.
 Himalayan botany, i. 60.
 Himalayan griffon vulture (*Gyps himalayensis*), i. 405.
 Himalayas, i. 167; ii. 96; alt. of, i. 258.
Hirundo rufula subsp. (swallow), i. 406.
 Ho (Tibetan official), i. 39; ii. 16.
 Hobbie (*Falco subbuteo*), i. 406.
 Hodgson, Lieut., ii. 365.
 Hogge, Col., i. 51; ii. 328.
 Honours and promotions, ii. 393-5.
 Hooker (botanist), i. 57.
 Hooker's bamboo, i. 64.
 Hoopoe (*Upupa epops*), i. 326, 406.
 Hor-kang (Tibetan official), ii. 12.
 Horned lark (*Otocorys elwesi*), i. 406.
 Horn masonry, ii. 210, (ill.) 211, (ill.) 213.
 Hot springs near Guru, i. 157; after the outbreak at (ill.), i. 153.
 Hot springs near Kang-ma, i. 170; temp. of, i. 170, 171, 173.
 House mice, i. 395.
 Hram, i. 140, 160.
 Hramtso, i. 140.
 Hsia-Fu, or Changan, i. 2.
 Huc, Evariste, i. 22; ii. 267, 387; account of the Potala by, ii. 291.
 Huien Tsang (Chinese traveller), ii. 265.
 Humaion (emperor), ii. 388.
 Humphreys, Capt., ii. 365.
- IGGULDEN, MAJOR, i. 41; ii. 107, 158, 364; as an angler, ii. 280.
 In-chung (novice), ii. 345.
 Indian Government, i. 39.
 Indranila (mystical stone), i. 111; ii. 310, 383.
 "I-shih," ii. 376.
Ithagenes cruentus (blood pheasant), i. 407.
Iynx torquilla (wryneck), i. 407.
- JALPAIGURI, i. 54.
 Jampalang (god of learning), i. 356.
 "Jang" (green), i. 111.
 Jang-kor-yang-tse Monastery, ii. 128, 131, 284; great Buddha at (ill.), ii. 137.
 Jang-ma, ii. 157; view of (ill.), ii. 159.
 Jan-pal Nin-po. See CHAMPO.
 Jelep Pass (Tib. "tges-lep-la"), i. 46, (ill.) i. 49, 52, 84; ii. 334.
 Jesuit map of Tibet, i. 11.
 Jetsun Poldan Yé Shé, i. 13.
 Jewellery, Tibetan, i. 375; coloured plate facing p. 376, vol. i.
 Jingals, i. 172, 176, 289, 298, 311; range of, i. 335.
 "Jo" (great golden idol of the Jo-kang), ii. 309, 311; plate facing p. 310, vol. ii.
 "Jo," sanctuary of, i. 213; ii. 168, 297.
 Johnson, Capt., ii. 365.
 Jo Ji-pal-den, or Atisha, King of Tibet, i. 3.
 Jo-kang (cathedral), i. 1, 3, 115; ii. 190, 219; description of the, ii. 301-314; great golden idol of, ii. 309; street leading to the (ill.), ii. 305.
 Jong-pen of Gyantse, i. 180; portrait of, i. 179.
 Jong-pens of Phari, i. 126, 133; degraded at Peking, i. 134; surrender the jong, i. 134.
 Jong-sa, ii. 25.
 Jong-sa la, ii. 25.
 "Jugri" (Tibetan dog), i. 387.
 Julian, i. 3.
- KAABAH, ii. 302.
 Kag-ué monastery, i. 88, 96; description of, i. 91; interior of (ill.), i. 89; service in, i. 91.
 "Kakemonos" (Japanese painted scroll), i. 374.
 Kala plain, i. 163.
 Kala tso, i. 44, 156, 161; ii. 56; a vanished lake, i. 162; evi-

Kala tso—*continued.*

- dence of former large population at, i. 162.
 Kaling chu, ii. 168, 178, 218, 280; coloured plate facing p. 178, vol. ii.
 "Kalons" (members of the cabinet), ii. 64.
 Kal-sang Sampa (Bridge of Good Luck), ii. 104, (ill.) 105.
 Kamakura, i. 198; ii. 135.
 Kamba, plain of, i. 40.
 Kamba la (pass), ii. 108, (ill.) 109, (ill.) 135.
 Kamba Jong, i. 36, 39, 44, 45, 49, 187; looking west from (ill.), facing p. 40, vol. i.; Mount Everest visible from, i. 40. •
 Kamba-partsi, ii. 109, 324; altar at (ill.), ii. 111; camps at, ii. 110; Gen. Macdonald taken ill at, ii. 111.
 Kamo, ii. 82.
 Kamparab, i. 126, 163; ii. 25, 156, 335.
 Kams (province), i. 304; ii. 48; levies from, called up, ii. 17.
 "Kang-che-go-mar" (tree sparrow), i. 408.
 Kang-ma, i. 250, 309; ii. 25, 55, 156; gompa at, i. 169; hot springs at (ill.), i. 173; ruined temple at, i. 168; temp. of springs at, i. 170, 171; views of (ill.), i. 170-171; wall built by Tibetans near (ill.), i. 169.
 Kangra Lamo Pass, i. 39.
 Kan-gyur (sacred scriptures), i. 367.
 Kapali-vastu, ii. 310.
 Kapok, i. 58.
 Karo chu, i. 275; ii. 99; expedition moving down the (ill.), ii. 87; valley of, ii. 89.
 Karo la, i. 299; i. 248-51, 265, (ill.) 266; ii. 48, (ill.) 83; alt. of, i. 266; ii. 86; before sunrise on the, photogravure facing p. 274, vol. i.; Col. Brander reconnoitres at (ill.), i. 273; fight at, i. 271, (ill.) • 273;
 glacier lake at the, photogravure facing p. 276, vol. i.; glacier on (ill.), i. 266-7; prisoners at (ill.), i. 277; Tibetans bolt from, i. 272-4; Tibetan casualties at, i. 276; Tibetan wall at, (ill.), ii. 85.
 Karpi (Dépen), ii. 178.
 Karponang (hamlet), i. 68, 71.
 "Katags" (scarves), i. 91, 178, 198, 231, 355; ii. 132.
 Kata-tsang, i. 109; forest fire near (ill.), i. 105.
 Kata-tsang cell ("Crow's-nest"), i. 102, (ill.) i. 103.
 Katmandu, ii. 206.
 Kawaguchi (Japanese traveller), i. 30; ii. 107, 307.
 Kazi (Tibetan official), i. 98.
 Kelly, Capt., ii. 366.
 Kelly, Lieut., ii. 366.
 Kelly, Mr. Talbot, i. 111, 157.
 "Kenpo" (abbot), ii. 128.
 Kerr, Lieut.-Col., ii. 365.
 Kestrel (*Falco tinnunculus*), i. 406.
 Khamo Monastery, i. 252.
 Khan-dro-ye-she-tso-gyal (teacher of Lamaism), ii. 33.
 Khar-chen-pal - gyi - wong - chuk (teacher of Lamaism), ii. 34.
 Khende-chega (official position of Dorjjeff), i. 30.
 "Khud," i. 52, 71.
 Kiakhta, ii. 399.
 "Kiang," or wild ass (*Equus hemionus*), i. 391; ii. 155.
 Ki-long, or Ki-rong, Monastery, ii. 313.
 "Kincob," i. 361.
 Kintup (explorer), ii. 22.
 Koko-nor, i. 4.
 Koli-kotsu, or Yi-tai (King of Tibet), ii. 385.
 Konchog, ii. 290.
 Kong-bu chu, i. 101.
 Konjo, Princess, ii. 310.
 Koran, ii. 43.
 Ko-wa-pal-tse (teacher of Lamaism), ii. 34.
 Kozlov (Russian explorer), i. 25.
 Krishna (explorer), ii. 22.

- Kublai Khan, i. 4; ii. 30-1.
 Kuchar Khanpo (state officer),
 ii. 290.
 Kun-chok-jang-né (teacher of
 Lamaism), ii. 34.
 Kun-de-ling, ii. 3, 182, 230.
 Ku-pup, i. 47.
 Kutch, i. 108, III.
 "Kwor" (yak-skin boat), ii. 323.
 Kyap-gon Rinpoche. See DALAI
 LAMA.
 Kyi chu, i. 236, 305; ii. 169,
 224, 226; evening by the,
 photogravure facing p. 152,
 vol. ii.; track beside the (ill.),
 ii. 157; valley of, ii. 147, 183.
 Kyi chu Valley (ill.), ii. 143.
 Kyilkor (altar shelves), i. 198,
 (ill.) 202, 221; ii. 310.
 Kyu-chung (teacher of Lamaism),
 ii. 34.
 "Kyung," or Garuda bird, ii.
 311.
- LA-CHEN Valley, i. 39.
 La-chung, ii. 14.
 Ladak, ii. 362.
 Laden, i. 167.
 "La-druk" ("the poison of the
 pass"), ii. 39.
Lagomys curzonix (mouse-hare),
 i. 395.
 Lagyap, i. 61, 72, (ill.) 75; be-
 tween Changu and, (ill.) i. 77;
 pool at, i. 72.
 Lamaism, i. 9, 232, 237, 255, 328,
 348, 350, 374; ii. 37, 40, 190;
 characteristics of, ii. 43; in
 Tibet, ii. 28-32; relics of
 primæval, ii. 30; Roman
 Catholicism and, ii. 47; sel-
 fishness of, ii. 51; State estab-
 lishment of, ii. 31; teachers of,
 ii. 32-34.
 Lamasery of Palkhor choide, i.
 205, 214.
 Lamda, i. 170-2.
 Lämmergeier (*Gypaëtus barbatus*),
 i. 85, 403.
 "Lan-de" (microbe sprite), ii. 39.
- Landon, Mr. Perceval (*Times*
 correspondent). See AUTHOR.
 Lang-darma, ii. 244; assassina-
 tion of, ii. 297.
 Lango la, i. 45.
 Lansdowne, Lord, i. 301, 306.
 La-tse Karo la, i. 140.
 Legge, Capt., ii. 365.
 Leh, ii. 19.
 Leonard, Capt., ii. 366.
Lepus oiostolus (woolly hare), i.
 394.
Lerwa nivicola (snow partridge),
 i. 407.
 Lha-kang, i. 214.
 Lha-lu House, or Tashi-linga (Ch.
 Hua-yüan), ii. 201, (ill.) 233;
 courtyard of (ill.), ii. 237;
 description of, ii. 236-44; gar-
 dens of (ill.), ii. 243; reception
 hall in (ill.), ii. 241; residence
 of Commissioner, ii. 232.
 "Lhapranga Lhassensi Asser-
 vato," ii. 381.
 Lhasa, i. 1, 23-5, 33, 112, 115,
 137, 140, 142, 187, 194, 230,
 249, 304, 321, 360; ii. 107,
 164; advance on, ii. 79; a
 garden city, ii. 184; alt. of,
 ii. 376; author rides from, to
 India, ii. 317-40; beggar-
 scavengers of, ii. 209; British
 diplomatic relations with, i.
 303; cathedral of (ill.), ii.
 299; chaos in, ii. 8, 9; Chief
 Magician's Temple at, photo-
 gravure facing p. 250, vol.
 ii.; city of, coloured plate
 facing p. 304, vol. ii.;
 corner of a golden roof in,
 coloured plate facing p. 262,
 vol. ii.; "cup-marks" outside,
 (ill.) ii. 162; daily market in, ii.
 275; dress in, ii. 215; en-
 trance to the cathedral at,
 photogravure facing p. 296,
 vol. ii.; entrance to Chinese
 Residency at (ill.), ii. 203;
 environs of, ii. 232-78; Ex-
 pedition leaves, ii. 360; first
 seen by Capt. Otfley, ii. 158;

Lhasa—*continued*.

first sight of (ill.), ii. 165; flight of the Dalai Lama from, ii. 19; from Shing-donkar (ill.), ii. 173; golden roofs of, ii. 261; Government of, i. 27; Grand Lama of, i. 3, 6, 347; horn masonry in, ii. 210, (ill.) 213; inside the Lu-kang gardens at (ill.), ii. 217; interior of the Chief Magician's temple at (ill.), ii. 259; internal affairs of, ii. 1, 8; Italian-like houses at, (ill.) ii. 247; latitude and longitude of, ii. 376; Lingkor, the Sacred Way round, ii. 23, 157, (ill.) 179, 218, 221-5; made the capital, i. 5; main street in (ill.), ii. 273; map of the road to end of vol. ii.; marching through, ii. 205; officers who reached, ii. 367; outside the western doors of the Cathedral in, (ill.) ii. 299; outside the western gate of (ill.), ii. 181, photogravure facing p. 182, vol. ii.; panorama of, ii. 191; portico of Chief Magician's temple at (ill.), ii. 255; previous visitors to, i. 4-22; road to, i. 55, 75, 160, 170, 258, 261, 263, 314; (ill.) ii. 158; rock-cut Buddha near (ill.), ii. 145; sacred willow at (ill.), ii. 293, (ill.) 295; scenes in (ill.), ii. 214, (ill.) 285; shrine on road to, ii. 115; sketch map of, facing p. 172, vol. ii.; street scenes in (ill.), ii. 202, 207, photogravure facing p. 206, vol. ii.; surviving elephant at (ill.), ii. 219; the Lukang gardens in, photogravure facing p. 218, vol. ii.; the turquoise bridge in, coloured plate facing p. 200, vol. ii.; treaty signed at, ii. 396; view inside western gate at, photogravure facing p. 286, vol. ii.; view of (ill.), ii. 173

Lheding Dépen, i. 50, 51, 142, 143; calls at Tuna, i. 51.

Li, Major, i. 48.

Lichens, i. 85, 86.

Lingkor, or Sacred Way, i. 115; ii. 23, 157, 218, 221; described, ii. 224; on the, photogravure facing p. 224, vol. ii.; sacred rock on the (ill.) ii. 227; view of (ill.), ii. 179, (ill.) 223, (ill.) 225.

Lingma-tang, i. 116, 118.

Lingtu, i. 84, 258.

Lister, Mr., ii. 338.

Littledale, Mr., i. 25.

Little Gobshi, i. 228; rug factory at, i. 228.

Lo-che-ma-thog-rin-chen (teacher of Lamaism), ii. 34.

Long-ma, i. 256; ii. 82.

Lophophorus refulgens (monal), i. 407.

Löseling Kempo (a Tibetan monk), ii. 277.

Lo zang rin-chen tsang-yang gyatso, beheaded at Dam, ii. 398.

Lu-chéa Monastery, i. 161.

Lu-kang, island sanctuary of, ii. 168, 201, 218.

Lung-ta ("flying horses"), i. 233.

Lynch, Lieut., ii. 365.

Lynxes (*Felis lynx* and *F. isabellina*), i. 393.

MA, GENERAL, i. 159, 178; surrenders Gyantse Jong. (ill.) i. 181

Macdonald, Gen., i. 44, 45, 48, 49, 104, 140, 175, 181; ii. 54, 123, 364; camps at Chumbi, i. 135; leaves Chumbi, i. 136; quarters of, at Bakcham, i. 104; returns to Chumbi, 187; taken ill at Kamba-partsi, ii. 111

Maclachlan, Capt., ii. 365.

Macpherson, Lieut., ii. 365.

Mädgalyana, i. 215.

Magadha, King of, i. 2.

Magniac, Mr. Vernon, ii. 107, 147, 364.

- Magnolias, i. 66.
 Magpie (*Pica bottanensis*), 234, 406.
 Maharajah of Nepaul, i. 304, 305.
 Mahatma, ii. 35.
 Mahatma theory, origin of. ii. 33.
 Mahomet, ii. 43.
 Mahommed Isa, (ill.) ii. 103.
 Mainprise, Capt., ii. 366.
 Maitreya (coming Buddha), i. 210, 368; ii. 307.
 "Major Wimberley" (dog), i. 339.
 Malang, i. 280; ii. 79.
 Mali-ghat, i. 59.
 Mallard (*Anas boscas*), i. 408.
 Mammals of Southern Tibet:
 Antelope (*Pantholops hodgsoni*), i. 393; bharal (*Ovis nahura*), i. 392; dogs (various), i. 403; field mice, i. 395; foxes (*Vulpes alopec v. flavescens* and *v. ferrilatus*), i. 394; ii. 84; gazelle or goa (*Gazella picticaudata*), i. 393; ii. 84; great Tibetan sheep (*Ovis hodgsoni*, *O. poli*, and *G. ammon*), i. 392; hare, woolly (*Lepus oiostolus*), i. 394; house mice, i. 395; kiangs, or wild asses (*Equus hemionus* and *E. onager v. indicus*), i. 391, 392; lynxes (*Felis lynx* and *F. isabellina*), i. 393; marmots (*Arctomys himalayanus* and *A. hodgsoni*), i. 394, 395; mouse-hare (*Lagomys curzoniae*), i. 395; musk deer (*Moschus moschiferus*), i. 396; Pallas's cat (*Felis manul*), i. 393; "shao" or Tibetan stag (*Cervus affinis*), i. 396 (ill.) 397, (ill.) 399; snow leopard (*Felis uncia*), i. 393; weasel (*Putorius alpinus*), i. 394; wild yak (*Bos grunniens*), i. 396; wolves (*Canis laniger*), i. 394; yak (ill.), i. 400. See also under respective heads.
 Maharajah of Sikkim, Palace of (ill.), i. 101.
 Mandalay, i. 198.
 "Manis" or "Mendangs" (inscribed stones), i. 207, 352.
 Manning, Mr. Thomas, i. 10, 17, 162, 193, 194; ii. 92; describes Phari, i. 132.
 Mansarowar, Lake, ii. 110.
 Man-trap found in Phari, ii. 378.
 Mantras, i. 231.
 Map of China and Tibet (1680), i. 7.
 Map of the Jesuits, i. 11.
 Map of Lhasa, facing p. 172, vol. ii.
 Map of Karo la, facing p. 270, vol. i.
 Map of the Phari-Gyantse road (Turner), i. 19.
 Map of the post at Gyantse, facing p. 300, vol. i.
 Map of the road to Lhasa, end of vol. ii.
 Marindin, Lieut., ii. 366.
 Markham, Sir Clements, i. 17, 21.
 Marmots (*Arctomys himalayanus* and *A. hodgsoni*), i. 394.
 Marpo-ri, or Red Hill, ii. 177, 218, 285.
 Marriage customs of Tibet, i. 385.
 Marriages, temporary, i. 100.
 Marsden, Lieut., ii. 366.
 Masbi Sikh, i. 300.
 Ma Shao yün, ii. 280.
 Masong Chungdong, ii. 333.
 Masu (Chinese historian), ii. 376, 385.
 Maund = 80 lbs., i. 183.
Melanocorypha maxima (Calandra lark), i. 406.
 "Mendangs" or "Manis" (inscribed stones), i. 207, 352.
 Menza, i. 165; alt. of plateau near, i. 163; column halts at, i. 163.
 "Meredithian," marriages, i. 386.
Mergus casto (goosander), i. 408.
 Merjelensee, i. 278.
 Meru, ii. 381; gompa at, ii. 192.
Merula ruficollis (red-throated ouzel), i. 406.
 Meru Ta Lama, ii. 289.
 Mewa, the jemadar, i. 331.
 Microbe sprites, ii. 39.

- Milvus melanotis* (black-eared kite), i. 405.
- Min-duk Sampa, or Bridge of the Pleiades, ii. 221.
- Minogue, Capt., ii. 364.
- Mir Izzat Allah, ii. 386.
- Miscellanea. See Appendix H, ii. 376-389.
- Mission, mentioned, i. 25, 39, 40, 41, 45, 92, 139, 188, 246, 301, 302, 306, 333, 391, 393, 404; ii. 9; at Chang-lo, i. 183; at Kamba Jong, i. 39; at Tuna, i. 138; camp at Tö-lung, ii. 169; compound at Chang-lo (ill.), i. 185; honours and promotions for members of the, ii. 393-5; Lord Curzon's reasons for sending the, ii. 21; mess-room of, at Chang-lo (ill.), i. 283, 284; moves to Guru, i. 157; night attack on, at Chang-lo, i. 287-98; political results of the, ii. 396-400; quarters at Chang-lo (ill.), i. 337; relief of, at Gyantse, ii. 52.
- Missovaia, ii. 399.
- Mitter, Mr., i. 292.
- "Mo-mo" (Tibetan dish), i. 363.
- Monal (*Lophophorus refulgens*), i. 407.
- Monasteries, at Chak-sam (ill.), ii. 113; Chal-sa, i. 126; Debung, i. 29, 48, 367; ii. 175 (ill.) 177, 230, 245, 265-7; Dongtse, i. 233; ii. 55; Gaden, i. 48, 142, 238; ii. 265, 268, 355; Jang-kor-yang-tse, ii. 128, 131, (ill.) 137, 284; Kag-ué, i. 88, 89; Khamo, i. 252; Ki-long, or Ki-rong, ii. 313; Kun-de-ling, ii. 182, 230; Lu-chea, i. 161; Né-nyeng, i. 375; Nyen-dé-kyi-buk, i. 219; Palkhor choide, i. 193, 206, 246, 294, 369; ii. 55, 284; Pikya, i. 164; Sakyā, i. 4, 305; ii. 31; Sam-ding, i. 244; Samye, i. 2; ii. 208; Sera, i. 48; ii. 158, 178, 245, 265-7; Ta-ka-re, i. 358; ii. 284; Tse-chen, i. 382; ii. 55, 58.
- Montifringilla adamsi* (snow or mountain finch), i. 407.
- Montifringilla blanfordi* (snow or mountain finch), i. 407.
- Montifringilla ruficollis* (snow or mountain finch), i. 407.
- Moody, Lieut., ii. 99.
- "Moong," ii. 383.
- Moorcroft, Mr. William, i. 22; ii. 386.
- Moore, Capt. C. H. G., ii. 366.
- Moore, Capt. F. T. T., ii. 366.
- Moore, Capt. R. C., ii. 366.
- Moorhen (*Gallinula chloropus*), i. 408.
- Morris, Capt., ii. 366.
- Moschus moschiferus* (musk deer), i. 396.
- Mount Everest, i. 40.
- Mountain Battery (No. 7), i. 47.
- Mountain sickness, i. 76.
- Mouse-hare (*Lagomys curzoniae*), i. 395.
- "Mr. Jackson" (dog), i. 339.
- "Mrs. Wigg" (Tibetan lady), i. 247.
- Mud and horn hut at Ragyāba (ill.), ii. 211.
- Mukden, Black Stone of, i. 1.
- Muli-ding-ki (lake), ii. 3.
- Mullaly, Major, ii. 364.
- Muni-tsampo, ii. 377.
- Murray, Major, ii. 67, 365.
- Musk deer (*Moschus moschiferus*), i. 396.
- Mussoor dal (lentils), ii. 380.
- Mu-tsang (treaty), ii. 386.
- NABSO LA (pass), ii. 108, 361.
- Na-chung Chos-kyong (temple), i. 369; ii. 175, 249, (ill.) 263, chief magician of, ii. 3; Italian-like houses of the (ill.), ii. 247.
- Nadir Shah, i. 27, 82.
- Nagartse, i. 261, 275; ii. 109; description of, ii. 98; durbars at, ii. 101; jong (ill.), ii. 91; (ill.), ii. 93; (ill.), ii. 97, 104; jong-pen of, ii. 143; looting in, ii. 63.
- Nai-ni. See NÉ-NYENG.

- Nain Singh, ii. 23, 267.
 Na-jal-den-ma-tse-mang (teacher of Lamaism), ii. 34.
 Nakchu-ka, i. 304; ii. 19.
 Nal-jor-den-pa-nam-khe (teacher of Lamaism), ii. 34.
 Nal-jor-gyal-wa-chok-yung (teacher of Lamaism), ii. 33.
 Nal-jor-pal-gyi-dor-je (teacher of Lamaism), ii. 34.
 Nal-jor-wang-chuk-chempo (teacher of Lamaism), ii. 33.
 Nam, ii. 157, 158.
 Namgye Karpo. See PHARI.
 Namgyel, Prince, i. 361, 363.
 Na-nam-dor-je-dud-jom (teacher of Lamaism), ii. 33.
 Na-nang-ye-she (teacher of Lamaism), ii. 33.
 Napil-para, i. 56.
 "Nari" (Tibetan dog), i. 387.
 Natu la, i. 47, 52; ii. 25, 156; alt. of, i. 83; track of (ill.), i. 77, (ill.) 79; summit of (ill.), i. 83.
 Na-wang Lob-sang, ruler of Tibet, i. 5, 6.
 Né-nyeng, i. 178, 281; ii. 56; description of, i. 243; halt at, i. 178.
 Nepal, i. 45, 187.
 Ne-tang, ii. 144; author halts at, ii. 320.
 Nethang, ii. 161.
Nettion crecca (common teal), i. 408.
 New Chumbi, camp at, i. 52.
 Newman, Mr. H. (correspondent), ii. 367.
 Newton, Sir Isaac, i. 112.
 Nga-dag-cho-gyal (teacher of Lamaism), ii. 33.
 Ngaku-wang-dorje. See DORJIEFF.
 Ngak-wang-lo-zang-tub-dan-gya-tso, the Dalai Lama, ii. 278, 351.
 Nichi-kang-sang, i. 256, 258, (ill.) 259, 262, (ill.) 263, 265; ii. 84, 90; alt. of, i. 259; Col. Brander encamps on, i. 265.
 Nicholls, Mr. E., ii. 15.
 Nirvana, ii. 33.
 Nisan, ii. 387.
 Noi-jins (gods), ii. 38.
 Norbu-ling, ii. 8, 10, 232-5.
 Norfolk Maxim detachment, i. 51.
 North Camp. See POME-TSE.
 Norzan Kazi, i. 98; house of, at Chema (ill.), i. 99.
 Norzunoff, i. 30; ii. 377.
 Nub-chen-nam-kar-ning-po (teacher of Lamaism), ii. 33.
 Nub-chen-sang-gyi-ye-she (teacher of Lamaism), ii. 33.
 Nur-sing (peak), i. 64.
 Nyak-chen-ye-she-scheun-nu (teacher of Lamaism), ii. 33.
 Nyang chu (stream), i. 163, 233; ii. 58; bridge over (ill.), i. 168.
 Nyang chu Valley, i. 167, 245, 250, 251, 284, 322; ii. 24, 79; treeless reaches of (ill.), i. 165.
 Nyen-dé-kyi-buk, i. 227; ii. 31; abbot of, ii. 32; buried monks of, i. 225, 348; lamas at (ill.); i. 227; monastery of, i. 219; monk of (ill.), i. 219; sanctuary at (ill.), i. 221; stone wicket of cell at (ill.), i. 223; waiting for immurement (ill.), i. 227.
 Nyeru, i. 170, 250, 252; ii. 55, 56.
 Nyeru chu, i. 252, 280; ii. 79.
 Nying-mas or Red Caps (sect), i. 206, 220.
Nyroca ferruginea (white-eyed pochard), i. 408.
Nyroca fuligula (tufted pochard), i. 408.
 O'CONNOR, CAPT., i. 39, 42, 314, 316, 317, 360; ii. 26, 56, 364, arrives at Chang-lo, i. 300; blows up house at Pala, i. 317; holds durbar before Guru, i. 142; interviews prisoners (ill.), i. 159; pays a visit to Tashi Lama, ii. 362; on the present condition and government of Tibet, ii. 343; reassures the monks (ill.), i. 209; rides to Ta-ka-re, ii. 126; visits

- O'Connor, Capt.—*continued*.
 Dongtse monastery, i. 233;
 visits the buried monks at
 Nyen - dé - kyi - buk, i. 217;
 wounded at Pala, i. 318.
- Odoric, or Ordericus, Friar, i. 4;
 ii. 221.
- Ogilvie, Capt., ii. 366.
- "Om mani padme hum" (prayer),
 i. 115, 117; 358; ii. 120, 144,
 226-9.
- "Ong kur-wa" ("power-sending"),
 ii. 35.
- Osmunda, i. 58.
- Otocorys elwesi* (horned lark), i.
 406.
- Ottley, Capt., i. 140, 279; ii. 158,
 365; pursues Tibetans, i. 275;
 remains at Gobshi, i. 282;
 rescues dak runners, i. 312;
 the first to see Lhasa, ii. 158.
- Ovis ammon* (sheep), i. 392.
- Ovis hodgsoni* (great Tibetan
 sheep), i. 392.
- Ovis nakura* (bharal), i. 392.
- Ovis poli* (sheep), i. 392.
- PADMA SAMBHAVA (Buddhist
 saint, known also as Padma Pani
 or the Guru Rinpoche), i. 2;
 ii. 351. See also AVALOKITES-
 WARA.
- Pahamri (mountain range), i. 317;
 ii. 333.
- Pala, i. 15, 184, 247, 309, 313,
 (ill.) 315, 318; pleasure grounds
 at (ill.), i. 319; taken by Col.
 Brander, i. 314; view of (ill.),
 i. 323.
- Pala family, i. 219, 238, 321.
- Palæ palace, i. 240.
- Palace of Maharaja of Sikkim
 (ill.), i. 101.
- Palairret, Capt., ii. 365.
- Palden Lhamo (pr. "Pandem
 Lhamo," the three-eyed god-
 dess), i. 193, 357; ii. 38, 313.
- Palkhor choide, i. 369, 370; ii.
 77; great chorten at (ill.),
 i. 211; inside the (ill.), i. 209;
 lamasery of, i. 205; main
 entrance to (ill.), i. 213;
 monastery of, i. 193, 206, 246,
 294, 369; ii. 55, 284; the Lha-
 kang of the (ill.), i. 214; view
 of (ill.), 217; wall painting in
 (ill.), i. 215.
- Pallas's cat (*Felis manul*), i. 393.
- Pallas's sea-eagle (*Haliaeetus leu-
 coryphus*), i. 405.
- Palti, Lake of, i. 126.
- Pan-dim (peak), i. 64.
- "Pang-che" (Severtzoff's war-
 bler), i. 408.
- Pantholops hodgsoni* (antelope), i.
 393.
- Para-chude, ii. 3.
- Pargo Kaling (western gate of
 Lhasa), ii. 169, 182 (ill.), 183,
 196, 222; photogravure facing
 p. 196. vol. ii.
- Paro, i. 92.
- Paro Penlop, ii. 17.
- Parr, Capt., i. 159, 181; ii. 337.
- Passer cinnamomeus* (cinnamon
 sparrow), i. 406.
- Passer montanus* (tree sparrow), i.
 406.
- Pathans (40th), ii. 57.
- Pemaraga (ruby), ii. 383.
- Pénam Jông, ii. 76.
- Penchen Rinpoche, ii. 344, 353.
- Penna, Brother Orazio della, i. 9;
 ii. 92, 207, 209.
- Pe-di Jong. See NAGARTSE JONG.
- Perdix hodgsoniæ* (Tibetan par-
 tridge), i. 407.
- Peterson, Capt., ii. 365.
- Peterson, Major, i. 314, 316, 318;
 ii. 158, 236, 365.
- Pevtsov (Russian explorer), i.
 25.
- Phag-mo Dorje (abbess of Sam-
 ding), i. 126, 244.
- Phari (Tib. "Phag-ri," or the
 "pig-hill"), i. 48, 53, 126, 136;
 alt. of, i. 128; ii. 334; dirt of,
 i. 129; houses of, i. 130;
 inhabitants of, i. 132 (ill.),
 133; jong-pens of (ill.), i. 134;
 street scene in (ill.), i. 131;
 woman of (ill.), i. 129.

- Phari Jong, i. 126, (ill.) i. 127; construction and dimensions of, i. 127; on the glacia of Phari fort, photogravure facing p. 132, vol. i.; photogravure facing p. 126, vol. i.
- Phari Pass, i. 92.
- Phari plain (ill.), i. 125.
- Phodang marpo, or "Red Palace," ii. 177, 189, 286.
- Phembu-ri, ii. 334.
- Phulbari Ghat, i. 56.
- Phylloscopus affinis* (willow-warbler), i. 406.
- Pica bottanensis* (magpie), i. 406.
- Pi-dogs, i. 338.
- Pikya Monastery, i. 164.
- "Piling" (Western foreigner), i. 135, 213.
- "Piling Gyal-po Chempo," ii. 171.
- Pintail (*Dafla acuta*), i. 160, 408.
- Pinus excelsa*, i. 86.
- Pioneers (23rd Sikh), i. 47, 51, 146, 147, 251, 270, 320, 321; ii. 57.
- Pioneers (32nd Sikh), ii. 58.
- Plain of Milk, i. 262, 276; ii. 84-5, 161, 239, 264; alt. of i. 265; dimensions of, ii. 169.
- Pneumonia, prevalence of, in high altitudes, i. 78.
- Pochards, i. 160.
- Polyandry, ii. 44.
- Pome-tse (North Camp), ii. 126, 140; plantation at (ill.), ii. 141; wood near, ii. (ill.), 139.
- Posnteens, i. 53.
- Potala, i. 23, 55, 258, 305.
- Potala Lama. See DALAI LAMA.
- Potala Palace, i. 348, 373; ii. 176, 218, 222, 279; (ill.) ii. 341; built by Na-wang Lob-sang, i. 5; coloured plates of the, facing pp. 278 and 284, vol. ii.; description of, ii. 189; disappointing interior of the, ii. 283; from the gardens of Lha-lu (ill.), facing p. 244, vol. ii.; height of, ii. 184; Huc's account of the, ii. 291; length of, ii. 184; photogra-
- vure facing p. 288, vol. ii.; reception at, ii. 289; the great ascent of the (ill.), facing p. 290, vol. ii.; treaty signed in the, ii. 396; under the (ill.), ii. 199, (ill.) 287; view from Chagpo-ri (ill.), ii. 186, 187; view of (ill.), ii. 281, 283.
- Potentilla root, i. 168.
- Prayer flags, i. 112.
- Prayer wheels, i. 115, 352; ii. 217, 222.
- Precious Teacher of Tashi-lhunpo, i. 164.
- Preston, Capt., ii. 365.
- Pronunciation of Tibetan words, ii. 376.
- Propasser pulcherrimus* (rose-finch), i. 406.
- Przhevalsky (Russian explorer), i. 25.
- Ptyonoprogne rupestris* (crag-martin), i. 406.
- "Pum-ba" (pyramidal chorten), ii. 126, (ill.) ii. 128.
- Punishments, Tibetan, ii. 378.
- "Pu-pu-pu-shu" (hoopoe), i. 409.
- "Purbu" (instrument of power), i. 230; ii. 34.
- Putorius alpinus* (weasel), i. 394.
- Putte, Samuel van der, i. 9.
- Pyramid of Saqqara, ii. 126.
- Pyrrhocorax graculus* (red-billed chough), i. 406.
- Querquedula circa* (Garganey teal), i. 408.
- RAGYABAS (beggar scavengers), ii. 209, 210.
- Ra-lung, i. 170, 249, 252, 256, (ill.) 257, 279; author meets Lieut. Arundell at, ii. 327; description of, i. 258.
- Ra-lung chu, i. 252, 261; bridge over the, i. 258; valley of (ill.), i. 253, (ill.) 257.
- Ra-lung po, i. 252; ii. 82.
- Ramo-che, ii. 220, 230; temple at, ii. 192.

- Rang-po (river), i. 59, 60, 96 ; tributary of the (ill.), i. 61.
- Rapalchan, King of Tibet, i. 3 ; ii. 292.
- Raven (*Corvus corax*), i. 403.
- Rawlings, Capt., ii. 332 ; detailed for surveying service to Gartok, ii. 361.
- Ray, Major, ii. 364 ; meets with an accident, ii. 379.
- Red-billed chough (*Pyrrhocorax graculus*), i. 406.
- Red Cap school, i. 2.
- Red Caps or Nying-mas (sect), i. 206.
- Red Hill, or Marpo-ri, ii. 177.
- Red Idol Gorge (Tib. Zam-trang, Ch. Hong-pûsa), i. 162, 171 ; ii. 56 ; fight at, i. 176 ; number of Tibetans killed at, i. 177 ; photogravure, facing p. 176, vol. i. ; rock-cut Buddhas at (ill.), 177.
- Redshank (*Totanus calidris*), i. 408. •
- Redstarts (*Ruticilla hodgsoni* and *R. rufiventris*), i. 234, 406.
- Red-throated ouzel (*Merula ruficollis*), i. 406.
- Re-incarnation, doctrine of, i. 349, 355 ; ii. 41-2, 307.
- Residency at Gartok, i. 63, (ill.) 67.
- Re-ting, the Regent's Palace (ill.), ii. 269.
- Re-ting, Lama of, ii. 9.
- " Rgyal-rtse " (" Rbyal Peak "), i. 193.
- Rhins, Dutreuil de, i. 24.
- Rhododendron argenteum*, i. 64.
- Riag, i. 59.
- Rice, Capt., ii. 332.
- Rijnhart, Mr., i. 24.
- Rinchengong, i. 89, 92, 96, 98 ; ii. 25 ; bridge in Chumbi Valley (ill.), i. 93 ; hermit's cell near (ill.), i. 95.
- Roborovsky (Russian explorer), i. 25.
- Rock-cut Buddhas, ii. 161 ; at Red Idol Gorge (ill.), i. 177 ; near Lhasa (ill.), ii. 145 ; at Ling-kor (ill.), 227.
- Rockhill, Mr. W. W., i. 24.
- " Ro-nang," i. 366.
- Rong chu, i. 261 ; ii. 104.
- Rong-ni (stream), i. 62 ; bridge over the (ill.), i. 63 ; on the (ill.), i. 65 ; photogravure, facing p. 62, vol. i.
- Rosefinch (*Propasser pulcherri-mus*), i. 326, 406.
- Ross, Capt., ii. 367.
- Row, Major, i. 270-2 ; ii. 365, 389.
- Royal Fusiliers (7th), ii. 58.
- Ruddy sheldrake, or Brahminy duck (*Casarca rutila*), i. 408.
- Russia, negotiates for a treaty, i. 33.
- Ruticilla hodgsoni* (redstart), i. 406.
- Ruticilla rufiventris* (redstart), i. 406.
- Rybot, Lieut., ii. 365.
- Ryder, Capt., i. 192, 292, 299 ; ii. 366 ; detailed for surveying service to Gartok, ii. 361 ; plans defences of Chang-lo, i. 334.
- SACRED willow at Lhasa (ill.), ii. 293, (ill.), 295.
- St. Joasaph, i. 357.
- Sakya Monastery, i. 4 ; ii. 31 ; Grand Lama of, i. 4 ; Red Lama of, i. 4.
- Sal, i. 58.
- Sam-ding Monastery, i. 244 ; ii. 99.
- Samonda, i. 164.
- Sam-ye Monastery, i. 2 ; ii. 208.
- Sanctuary at Nyen-dé-kyi-buk (ill.), i. 221.
- Sandberg, Rev. Graham, ii. 206.
- Sand-grouse (*Syrrhaptes tibetanus*), i. 407.
- Sand-martin (*Cotile riparia*), i. 406.
- Sappers (2nd), i. 47.
- Sarat Chandra Das, i. 235, 236, 240.
- Saugang, i. 177, 299, 309 ; ii. 56.
- Saxifrage, i. 160.

- "Sebu" (Tibetan dog), i. 387.
 Sebu la, i. 81.
 Se-chuan, i. 81.
 Sen-dé-gye-sum, or Three Great Monasteries, ii. 265, 396.
 Sera, ii. 169.
 Sera Monastery, i. 48; ii. 178, 245, 265-7.
 Sevoke, description of, i. 57.
 Shaffi Phen-tso Dorje. See SHATA SHAPÉ.
 Shamanist (Black Hat devil dancer), ii. 297.
 "Shao," or Tibetan stag (*Cervus affinis*), i. 99, 116, 396, (ill.) 397, (ill.) 399.
 "Shao-a-ru-chu" (ten-pointed stag), i. 99.
 "Shao" horns (ill.), i. 399; ii. 261.
 Shapés or Kalons (cabinet ministers), ii. 12, 345, 356; council chamber of, ii. 357.
 Shata Shapé (Premier, also known as Shaffi Phen-tso Dorje), ii. 4, 8, 12; accused of taking bribes, ii. 10.
 Shebdung Lama, i. 218, 220, 239; ii. 147.
 Sheldrake, ruddy, or Brahminy duck (*Casarca rutila*), i. 160, 234.
 Sheng-tai, ii. 15.
 Shenrezig, eleven-headed (ill.), ii. 49, 314.
 Shen-si, i. 4.
 Sheol, i. 210.
 Sheppard, Capt. i. 307, 314-6; ii. 67, 76, 365, constructs covered way between Chang-lo and Pala (ill.), i. 341.
 Shigatse, i. 46, 142, 248-9; ii. 353; road, i. 343, 345.
 Shigatse Dépen, i. 143.
 Shing don kar, ii. 169, 172-3; ruined fort of, ii. 172.
 Shin-je (God of Hell), ii. 33, 38, 268.
 Shipki Pass, ii. 363.
 Shō-kang (Tibetan official), ii. 12
 Shoveller (*Spatula clypeata*), i. 408.
 "Shri" (spirit), ii. 39.
 Shui-ko-liang-ting. See LU-KANG.
 Shu-po-pal-ki-sing-gé (teacher of Lamaism), ii. 34.
 Shwé Dagon, ii. 189.
 Sidi Ali, ii. 389.
 Sikhs, i. 248, 249.
 Sikkim, i. 36, 45, 53, 163; foliage of, i. 57-63; frontier regulations of, ii. 7; game at, i. 67; leeches of, i. 67; path through (ill.), i. 73; products of, i. 66; woods at, i. 84.
 Siliguri, i. 52, 81; dak bungalow at, i. 54.
 Sinchen Lama, i. 220, 233, 236, 237, 371; ii. 144; story of the last, i. 235.
 Singh Bir (author's servant), character of, ii. 81.
 Sining, ii. 17.
 Skeene, Capt., ii. 367.
 Sketch map of Lhasa, facing p. 172, vol. ii.
 Skipwith, Lieut., ii. 366.
 Skylark (*Alauda arvensis*), i. 406.
 "Sna-mdong" (Ya-tung), i. 51.
 Snipes (*Gallinago solitaria* and *G. stenura*), i. 408.
 Snow leopard (*Felis uncia*), i. 393.
 Snow, or mountain finches (*Montifringilla adamsi*, *M. blanfordi*, and *M. ruficollis*), i. 407.
 Snow partridge (*Lerwa nivicola*), i. 407.
 Snow pigeon (*Columba leuconota*), i. 86, 407.
 Sok-po-lha-pal (teacher of Lamaism), ii. 33.
 Solpon chenpo, ii. 290.
 Souter, Capt., i. 53; ii. 102, 158, 365.
 Southern Tibet. See TIBET, SOUTHERN.
 Sparrowhawk (*Accipiter nisus*), i. 406.
Spatula clypeata (shoveller), i. 408.
 Spencer, Lieut., ii. 366.
 Strong-tsan-gambo, King of Tibet, i. 2; ii. 29, 284; establishes Buddhism, ii. 29.

- Steel, Mr. F. A., i. 385.
 Steen, Capt., ii. 362.
 Strachey, Mr. Henry, i. 24.
 Strachey, Mr. Robert, i. 24.
 Stuart, Capt., ii. 366.
 Suiyung Barrier, ii. 296.
 Superstitions, i. 349, 352.
 Su-pi-la-yat, i. 364.
 "Susan" (Tibetan mule) (ill.), i. 125.
 Swallows (*Hirundo rufula*, *subsp.*), i. 406.
 "Swastika" or "fylfot" i. 145, 351.
 Swift (*Cypselus apus*), i. 406.
 Symplegades, i. 118.
 Synge, Capt., ii. 367.
Syrrhaptes tibetanus (sand-grouse), i. 407.
 Sze-chuan, province of, i. 362; ii. 15.
 TA CHING-I-TUNG CHIH, ii. 280.
 Ta Lama, ii. (ill.), II, 12, 61-5, 100, 102.
 Ta-chien-lu, ii. 15, 361.
 Tag-po (district), ii. 3.
 Tai-tsang, Emperor, i. 3.
 Ta-ka-re, O'Connor and author ride to, ii. 127; giant willows at, (ill.) ii. 129.
 Ta-ka-re Monastery, i. 358; ii. 127, 284; treasure room in (ill.), ii. 133.
 Ta-karpo, or "White Rock," i. 118, (ill.) 119.
 Ta-la, ii. 95-6.
 Tamdin (deity), ii. 38.
 Tandesa, plantation of birches at, i. 167.
 Tang, imperial house of, i. 2.
 "Tang-kas" (roll paintings on canvas or silk), i. 247, 374; ii. 132, coloured plate facing p. 370, vol. i.
 Tang la (pass), i. 48, 92, 122, 136; blizzard on the, ii. 361; crossing the, i. 137; heliograph at, i. 52.
 Tang-tong, Prince, ii. 119.
 Tantric rites, carved human bones used in (ill.), ii. 251.
 Taranath Grand Lama, ii. 2, 235.
 Taring, i. 361; walls of, i. 364.
 Tar Kola, i. 59.
 Tashi Lama (Grand Lama of Tashi-lhunpo), i. 6; ii. 220, 353, 399.
 Tashi-lhunpo, i. 5, 13, 14, 235; abbot of, i. 41; gramophone incident at, i., 41; Grand Lamas of, i. 3, 5, 6, 235; ii. 220, 353.
 Tashi-tse, ii. 147.
 Teal, i. 160; ii. 176.
 Te-chih-li-tsan, ii. 296, 385.
 Te-kang, ii. 12.
 Téling Kusho, i. 335; ii. 56.
 Temperatures at Chu-gya, ii. 380; hot springs, i. 170-1, 173; Phari, i. 128; ii. 380; Tang la, ii. 380; Yak la, i. 52.
 Tenge-ling, ii. 230.
 Ten-gyur (commentaries on sacred scriptures), i. 367.
 Terai, i. 57.
 Terns, i. 160.
Tetraogallus tibetanus (Tibetan snow-cock), i. 407.
 "Té-tsang" (treaty), ii. 386.
 Thari-putra, i. 215.
 "The Lama" (dog), i. 339.
 Thorold (explorer), i. 24.
 Thompson, Sir E. M., i. 411.
 Tibet, i. 60, 158, 225, 230; alt. of, ii. 376; art in, i. 369-74; Buddhism in, ii. 28-51; burial customs in, ii. 389; climate of, i. 342; colour of, i. 340; cookery in, i. 363; deities of, ii. 37; devil worship in, ii. 36; difficulties of travel in, i. 23; diseases prevalent in, ii. 46; divorce in, i. 386; early history of, i. 1-6; explorers of, i. 4-25; first sight of, i. 83, (ill.) 85; first tree in, (ill.), i. 167; folklore of, ii. 367-375; Friar Odoric, or Ordericus, visits, i. 4; future relations with, ii. 26; jewellery of, i. 375, coloured plate facing p. 376,

- vol. i.; lamaism in, ii. 28-32; language of, i. 367; legendary history of, i. 1; literature of, i. 367; maps of, i. 7, 11; marriage customs of, i. 385; medical profession in, ii. 383; music of, i. 381; prayer flags of, i. 232; punishment in, ii. 353; Red Cap colonies in, i. 255; religion of, i. 347-59; religious tyranny in, i. 349; rise of the present régime in, i. 5; rulers of, i. 2-6; secret surveys of, ii. 22-3; Srong-tsan-gambo, King of, i. 2; sunsets in, i. 280, 346; ii. 112; tea in, i. 362; viceroy of, i. 305; woven stuffs of, i. 376.
- Tibet Frontier Commission. See MISSION.
- Tibet, Southern, i. 126; amphibia of, i. 410; birds of—see BIRDS OF SOUTHERN TIBET; fish of, i. 409; insects of, i. 410; mammals of—see MAMMALS OF SOUTHERN TIBET; miscellaneous, i. 410; natural history of, i. 391-410; reptiles of, i. 409.
- Tibetan art, i. 369-74; art of wall building, i. 265; attendants (ill.), i. 145; brasswork, i. 376; casualties at Karo la, i. 276; charms, i. 349, 352, 375; children (ill.), i. 385; council imprisoned, ii. 11; curiosity, ii. 171; diplomacy, i. 32; dogs, i. 387, 403; frescoes (ill.), i. 215, (ill.) 241, 370; highlands, i. 255; historical relic (Do-ring), i. 1; house charm (ill.), i. 353; jewellery, coloured plate facing p. 376, vol. i.; manuscripts, i. 369; music, i. 381; pottery, i. 376; prisoners at Karo la (ill.), i. 277; pronunciation of, words, ii. 376; punishments, ii. 378; question, i. 26; sanctuary, photogravure facing p. 358, vol. i.; stag (ill.), i. 396; staghorn (ill.), i. 399; "tang-ka," coloured plate facing p. 370, vol. i.; track (ill.), i. 122; wall at Hot Springs (ill.), i. 139, 142; wall at Karo la (ill.), ii. 85; woman labour (ill.), i. 383; women washing (ill.), i. 382; women weaving (ill.), ii. 386; work, examples of (ill.), i. 377, (ill.) i. 379; woven stuffs, i. 376.
- Tibetan dogs, i. 387, 403.
- Tibetan partridge (*Perdix hodgsoniæ*), i. 407.
- Tibetan snow-cock (*Tetraogallus tibetanus*), i. 407.
- Tibetan twite (*Acanthis brevirostris*), i. 407.
- Tibetan universe (ill.), ii. 381.
- Tibetan wall at Hot Springs; photogravure facing p. 148, vol. i.
- Tibetans, i. 244; and agriculture, i. 233; assemble near Bam tso, i. 140; break treaty of 1890-3, i. 36; build a wall near Kang-ma, i. 168; characteristics of the, i. 107; charms of, i. 349, 352, 375; dirt of, ii. 45; disarming the, i. 147; diseases prevalent among, ii. 46; Dr. Franklin's work among wounded, i. 157; flight of, i. 150, (ill.) 151, 179, 272; gather at Guru, i. 50; group of (ill.), ii. 387; (ill.), ii. 388; home life of, i. 360; in force round Gyantse, ii. 55; incapacity of, as soldiers, i. 275; in the Karo la, i. 251; language of, i. 367; literature of, i. 367; manners and customs, i. 359; marriage customs of, ii. 44; number of, killed at Red Idol Gorge, i. 177; polyandry practised by, ii. 44; pursuit of, i. 175; repulsed at Chang-lo, i. 333; servants of, i. 364; superstitions of, i. 349, 351, 352; surround Gyantse, i.

- Tibetans—*continued*.
 269; temporary marriages of the, i. 100; wall built by, at Ya-tung (ill.), i. 37.
 "Tim" (dog), i. (ill.), 278, 338.
 Ting-pa, i. 345.
 Tip arsenal, ii. 10.
 Tipa (or Ti) Rinpoche, ii. 271, 355.
 "Tippoo" (Tibetan dog), i. 387.
 Tipta la, i. 45.
 Ti-srong-de-tsan, King of Tibet, i. 2, 3.
 Tista (river), i. 36, 57, 82; bridge over, i. 59.
 Tista Valley, i. 45.
 "Tola" (weight), ii. 289.
 Tö-lung, ii. 167, 169.
 Tö-lung chu, bridge over, ii. 167, 319.
 "To-men" ("high-low"=height), i. 367.
 To-nang, ii. 96.
 Tongsa Penlop, i. 304; ii. 62-65, 230, 396; offers his services as mediator, ii. 16; portrait of, ii. 63; signs treaty, ii. 396.
 Tong-shong, i. 118.
 Tonmi-Sambhota, i. 2.
 "Torma" (butter ornaments), i. 102, 205.
Totanus calidris (redshank), i. 408.
 "To-wo" ("terrible"), ii. 36.
 "Traba," i. 102.
 Trama-lung, ii. 106.
 "Trang" (a cut track in cliff), i. 73, 262.
 Treaty signed at Lhasa, ii. 396.
 Trebeck (explorer), i. 22; ii. 386.
 Tree sparrow (*Passer montanus*), i. 406.
 Truninger, Mr., i. 310.
 Tsamba, i. 183; ii. 245.
 Tsang, province of, i. 107, 235, 236; ii. 213, 236, 353.
 Tsang-po, 236, 305; ii. 24, 56, 104, 106 (ill.) 353; north shore of the, ii. 127; pum-ba on the bank of the (ill.), ii. 128; yak-skin boats on the, ii. 123.
 Tsan-nyid (abbot), i. 33.
 Tsanpu, ii. 296.
 Tsarong Dépen (Tibetan official), ii. 12, 17.
 Tse-chen, 294, 295, 322; bridge at, 218; monastery at, ii. 55; storming of, ii. 59; temples of, i. 184; view of (ill.), ii. 61.
 Tse-chen Monastery, i. 382; ii. 55, 58.
 Tsecho-ling, ii. 230.
 Tse-chung Shapé (Tibetan official), ii. 12.
 Tse-gang-tse, ii. 126.
 Tse-pe-nang, ii. 147.
 Tsering (author's servant), i. 125, 234; ii. 81, 229; character of, ii. 81.
 Tsomo, Lake, i. 363.
 Tsong-du (National Council), i. 32, 33, 35, 356; ii. 5, 12, 270, 396; described, ii. 358; duties of the, ii. 359.
 Tsong-kapa ("He of the Onion Land"), i. 4, 5, 356; ii. 244, 265, 310.
 Tsybikoff, M., ii. 377.
 Tu (fishing village), ii. 104.
 Tub-chen-pal-gyi-sing-ge (teacher of Lamaism), ii. 33.
 Tubdan, i. 356.
 Tubdan Gyatso, ii. 3, 4, 18, 398-9.
 "Tu che," i. 366.
 Tufted pochard (*Nyroca fuligula*), i. 408.
 Tuna, i. 48, 138, (ill.) 184; ii. 16; alt of, i. 138; camp of Mission at, i. 135; column returns to, i. 154; life at, i. 48; moonlight at, (ill.) ii. 384; plateau, i. 51, 141.
 Tunyig Chempo (secretary), ii. 64, 100.
 Turner, Lieut. Samuel, i. 10, 14, 17, 92, 159, 161, 164 171; map of Phari-Gyantse road (1783) by, i. 19.

- Turtle-dove (*Turtur orientalis*), i. 409.
Turtur orientalis (turtle-dove), i. 409.
- U, PROVINCE of, i. 352 ; ii. 236.
 Ugyen Gyatso (explorer), ii. 92.
 Ugyen Kazi (horse dealer and diplomatist), i. 97 ; ii. 10 ; portrait of, ii. 9.
 "Umzi" (manager), ii. 127.
Upupa epops (hoopoe), i. 406.
 Urga, i. 33 ; ii. 2, 17, 19, 377.
- VICEROY OF TIBET, i. 305.
 Vihara of Boro-Bodder, i. 209.
 Visvakarma, ii. 310.
Vulpes alopes v. flavescens (fox), i. 394.
Vulpes ferrilatus (fox), i. 394.
- WADDELL, Lieut.-Col., i. 232, 292 ; ii. 37, 92, 298, 364.
 Wagtails, i. 406.
 Wai-wu-pu, ii. 272, 308.
 Walker, Lieut., i. 314, 316 ; ii. 366.
 Walton, Capt., i. 40, 157, 192, 246, 291, 333, 337, 391 ; ii. 364 ; narrow escape of, at Chang-lo, i. 288 ; on the natural history of Southern Tibet, i. 392.
 Ward, Capt., ii. 365.
 Wassawa Singh, i. 271-3 ; earns the Order of Merit, i. 272.
 Weasel (*Putorius alpinus*), i. 394.
 "Wei Tsang t'u chih," ii. 280.
 "Wheel of life," i. 210.
 White, Mr. Claude, i. 39, 40, 41, 43, 52, 64, 361, 377 ; ii. 8, 64, 90, 364 ; residence of, at Gangtok, i. 63 ; takes photographs, ii. 100, 244 ; visits the temple of the Chief Magician, ii. 246.
 "White Cairn" (Chorten-karpo wall), i. III.
 "White Expanse" (India), i. III.
 White-eyed pochard (*Nyroca ferruginea*), i. 408.
- Wild duck, i. 160 ; ii. 176.
 Wild yaks (*Bos grunniens*), i. 346, 396.
 Willow-warbler (*Phylloscopus affinis*), i. 406.
 Wilton, Mr. ii. 15, 64, 272, 364.
 Wimberley, Major, ii. 366.
 Wo - den - pal - gyi - wang - chuk (teacher of Lamaism), ii. 34.
 Wolves (*Canis laniger*), i. 394.
 Wood, Capt., detailed for surveying service to Gartok, ii. 361.
 Wryneck (*Iynx torquilla*), i. 407.
- YABSHI HOUSE, ii. 205.
 Yak la ("yak pass," pr. Ya la), i. 52 ; road (ill.), i. 87, 97 ; valley, i. 98.
 Yaks, i. 45, 103, 123, 132, 197, 234, (ill.) 400 ; ii. 83, (ill.) 155 ; anthrax among, i. 46 ; as transport, i. 44 ; flesh-licking, ii. 388 ; in a blizzard, photograph facing p. 136, vol. i. ; ploughing, i. 218, (ill.) 401.
 Yak-skin boats, (ill.) ii. 123.
 Yam-dok tso (Sacred Lake of Tibet), i. 7, 261 ; ii. 106, 353, 361 ; first sight of (ill.), ii. 91, 92 ; southern shores of the, (ill.) ii. 95.
 Yarsig, ii. 104.
 Yates, Lieut., ii. 365.
 Yatung, i. 36, 51, 96, 142 ; expedition reaches, i. 47 ; wall at, (ill.) i. 37.
 Yavanas (people), ii. 310.
 Yellow, or Gelupka sect, i. 4 ; ii. 355.
 Yellow Caps, i. 205.
 Yi-tai, or Koli-kotsu (King of Tibet), ii. 385.
 "Yom-bor" (species of acacia), ii. 132.
 Young, Capt., ii. 366.
 Younghusband, Col., i. 40, 43, 48, 50, 142, 191, 247, 250, 269, 288, 292, 306 ; ii. 364 ; frontispiece Vol. II. ; communications of, ii. 78 ; conducts durbars

- Younghusband, Col.—*continued*.
 at Gyantse, ii. 64-5; consents to Col. Brander's expedition, i. 251; first diplomatic success of, i. 28; grants armistice, ii. 61; interviews Lheding Dépen at Guru, i. 50; letter of, returned unopened, (ill.) ii. 53; moves into Chang-lo, i. 183; occupies Chang-lo, i. 245; receives Amban, (ill.) ii. 195, (ill.) 197; returns to Chumbi, ii. 55; stays at Tuna, i. 135; visits Guru camp, i. 50.
 Yu-kang (Amban), ii. 8, 13; disgraced, ii. 13.
 Yumbu Lagang, ii. 285.
 Yu-tai (Amban), ii. 13, 272.
 Yu-tok, ii. 12.
 Yutok Sampa, or Liu-li-chiao, ii. 192, 201, 302; city entrance to the, (ill.) ii. 385.
 Yutok Shapé, ii. 64, 102.
 Yun-hai-phun, ii. 16.
 Yung-lu, ii. 13.
 "Yu tso" (Turquoise Lake). See YAM-DOK TSO.
 ZAM-TRANG (Ch. Hong-pûsa, or Red Idol Gorge), i. 172.
 Zebrules, ii. 154.